



# Full wwPDB X-ray Structure Validation Report ⓘ

Oct 26, 2017 – 12:30 AM EDT

PDB ID : 3L1S  
Title : 3-Aryl-4-(arylhydrazono)-1H-pyrazol-5-ones: Highly ligand efficient and potent inhibitors of GSK3  
Authors : Haar, T.E.  
Deposited on : unknown  
Resolution : 2.90 Å(reported)

This is a Full wwPDB X-ray Structure Validation Report for a publicly released PDB entry.

We welcome your comments at [validation@mail.wwpdb.org](mailto:validation@mail.wwpdb.org)

A user guide is available at

<http://wwpdb.org/validation/2016/XrayValidationReportHelp>

with specific help available everywhere you see the ⓘ symbol.

---

The following versions of software and data (see [references ⓘ](#)) were used in the production of this report:

MolProbity : 4.02b-467  
Mogul : 1.7.2 (RC1), CSD as538be (2017)  
Xtriage (Phenix) : 1.9-1692  
EDS : rb-20030345  
Percentile statistics : 20161228.v01 (using entries in the PDB archive December 28th 2016)  
Refmac : 5.8.0135  
CCP4 : 6.5.0  
Ideal geometry (proteins) : Engh & Huber (2001)  
Ideal geometry (DNA, RNA) : Parkinson et al. (1996)  
Validation Pipeline (wwPDB-VP) : rb-20030345

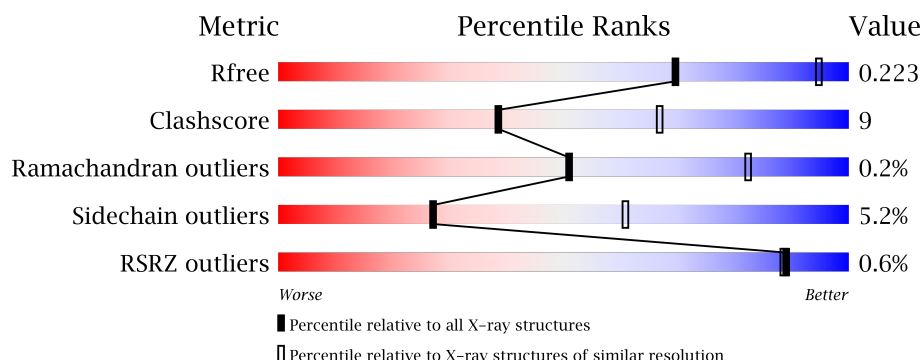
# 1 Overall quality at a glance

The following experimental techniques were used to determine the structure:

## *X-RAY DIFFRACTION*

The reported resolution of this entry is 2.90 Å.

Percentile scores (ranging between 0-100) for global validation metrics of the entry are shown in the following graphic. The table shows the number of entries on which the scores are based.



Metric	Whole archive (#Entries)	Similar resolution (#Entries, resolution range(Å))
$R_{free}$	100719	1586 (2.90-2.90)
Clashscore	112137	1807 (2.90-2.90)
Ramachandran outliers	110173	1768 (2.90-2.90)
Sidechain outliers	110143	1770 (2.90-2.90)
RSRZ outliers	101464	1596 (2.90-2.90)

The table below summarises the geometric issues observed across the polymeric chains and their fit to the electron density. The red, orange, yellow and green segments on the lower bar indicate the fraction of residues that contain outliers for  $\geq 3$ , 2, 1 and 0 types of geometric quality criteria. A grey segment represents the fraction of residues that are not modelled. The numeric value for each fraction is indicated below the corresponding segment, with a dot representing fractions  $\leq 5\%$ . The upper red bar (where present) indicates the fraction of residues that have poor fit to the electron density. The numeric value is given above the bar.

Mol	Chain	Length	Quality of chain
1	A	414	
1	B	414	

The following table lists non-polymeric compounds, carbohydrate monomers and non-standard residues in protein, DNA, RNA chains that are outliers for geometric or electron-density-fit criteria:

Mol	Type	Chain	Res	Chirality	Geometry	Clashes	Electron density
2	Z92	A	421	-	-	X	-
3	PO4	B	421	-	X	-	-

## 2 Entry composition [i](#)

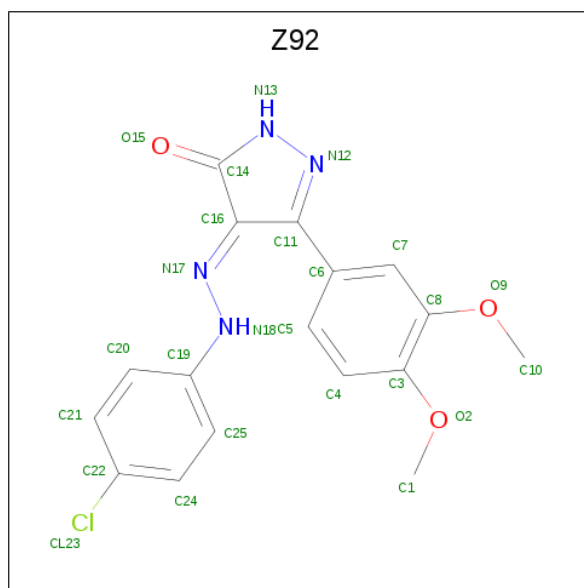
There are 4 unique types of molecules in this entry. The entry contains 5617 atoms, of which 0 are hydrogens and 0 are deuteriums.

In the tables below, the ZeroOcc column contains the number of atoms modelled with zero occupancy, the AltConf column contains the number of residues with at least one atom in alternate conformation and the Trace column contains the number of residues modelled with at most 2 atoms.

- Molecule 1 is a protein called Glycogen synthase kinase-3 beta.

Mol	Chain	Residues	Atoms					ZeroOcc	AltConf	Trace
1	A	336	Total	C	N	O	S	0	0	0
			2600	1671	441	476	12			
1	B	330	Total	C	N	O	S	0	0	0
			2555	1646	427	471	11			

- Molecule 2 is (4E)-4-[(4-chlorophenyl)hydrazono]-5-(3,4-dimethoxyphenyl)-2,4-dihydro-3H-pyrazol-3-one (three-letter code: Z92) (formula: C<sub>17</sub>H<sub>15</sub>ClN<sub>4</sub>O<sub>3</sub>).



Mol	Chain	Residues	Atoms					ZeroOcc	AltConf
2	A	1	Total	C	Cl	N	O	0	0
			25	17	1	4	3		
2	B	1	Total	C	Cl	N	O	0	0
			25	17	1	4	3		

- Molecule 3 is PHOSPHATE ION (three-letter code: PO4) (formula: O<sub>4</sub>P).



Mol	Chain	Residues	Atoms			ZeroOcc	AltConf
3	B	1	Total	O	P	0	0
			5	4	1		

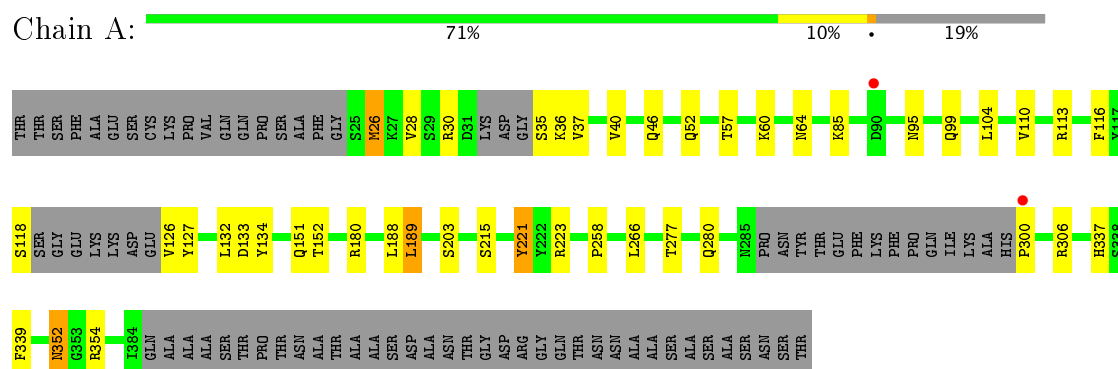
- Molecule 4 is water.

Mol	Chain	Residues	Atoms		ZeroOcc	AltConf
4	A	204	Total	O	0	0
			204	204		
4	B	203	Total	O	0	0
			203	203		

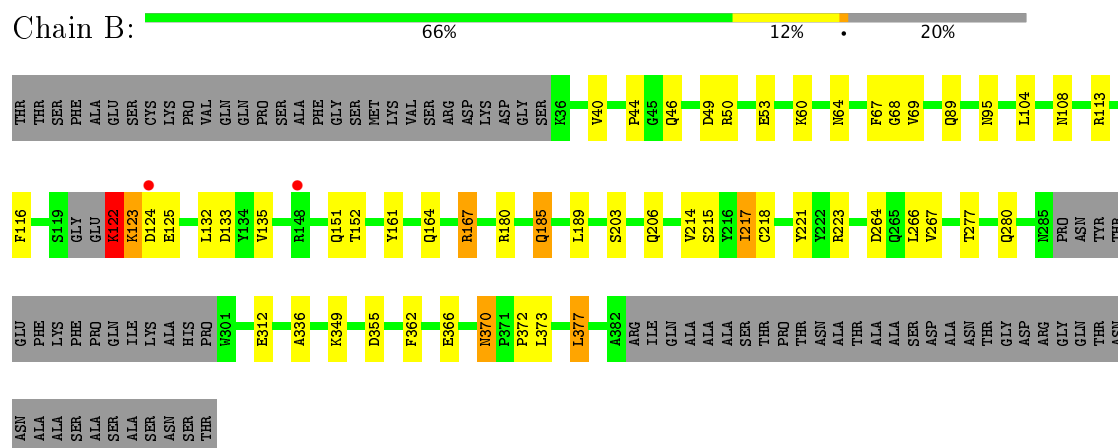
### 3 Residue-property plots

These plots are drawn for all protein, RNA and DNA chains in the entry. The first graphic for a chain summarises the proportions of the various outlier classes displayed in the second graphic. The second graphic shows the sequence view annotated by issues in geometry and electron density. Residues are color-coded according to the number of geometric quality criteria for which they contain at least one outlier: green = 0, yellow = 1, orange = 2 and red = 3 or more. A red dot above a residue indicates a poor fit to the electron density ( $RSRZ > 2$ ). Stretches of 2 or more consecutive residues without any outlier are shown as a green connector. Residues present in the sample, but not in the model, are shown in grey.

- Molecule 1: Glycogen synthase kinase-3 beta



- Molecule 1: Glycogen synthase kinase-3 beta



## 4 Data and refinement statistics

Property	Value	Source
Space group	P 21 21 21	Depositor
Cell constants a, b, c, $\alpha$ , $\beta$ , $\gamma$	82.60Å 84.80Å 178.00Å 90.00° 90.00° 90.00°	Depositor
Resolution (Å)	39.18 – 2.90 39.18 – 2.90	Depositor EDS
% Data completeness (in resolution range)	(Not available) (39.18-2.90) 93.4 (39.18-2.90)	Depositor EDS
$R_{merge}$	0.09	Depositor
$R_{sym}$	(Not available)	Depositor
$\langle I/\sigma(I) \rangle$ <sup>1</sup>	3.42 (at 2.90Å)	Xtriage
Refinement program	TNT, BUSTER 2.9.2	Depositor
R, $R_{free}$	0.184 , 0.232 0.184 , 0.223	Depositor DCC
$R_{free}$ test set	1335 reflections (5.29%)	DCC
Wilson B-factor (Å <sup>2</sup> )	38.2	Xtriage
Anisotropy	0.551	Xtriage
Bulk solvent $k_{sol}$ (e/Å <sup>3</sup> ), $B_{sol}$ (Å <sup>2</sup> )	0.32 , 59.4	EDS
L-test for twinning <sup>2</sup>	$\langle  L  \rangle = 0.49$ , $\langle L^2 \rangle = 0.32$	Xtriage
Estimated twinning fraction	0.026 for k,h,-l	Xtriage
$F_o, F_c$ correlation	0.93	EDS
Total number of atoms	5617	wwPDB-VP
Average B, all atoms (Å <sup>2</sup> )	38.0	wwPDB-VP

Xtriage's analysis on translational NCS is as follows: *The largest off-origin peak in the Patterson function is 3.37% of the height of the origin peak. No significant pseudotranslation is detected.*

<sup>1</sup>Intensities estimated from amplitudes.

<sup>2</sup>Theoretical values of  $\langle |L| \rangle$ ,  $\langle L^2 \rangle$  for acentric reflections are 0.5, 0.333 respectively for untwinned datasets, and 0.375, 0.2 for perfectly twinned datasets.

## 5 Model quality [i](#)

### 5.1 Standard geometry [i](#)

Bond lengths and bond angles in the following residue types are not validated in this section: PO4, Z92

The Z score for a bond length (or angle) is the number of standard deviations the observed value is removed from the expected value. A bond length (or angle) with  $|Z| > 5$  is considered an outlier worth inspection. RMSZ is the root-mean-square of all Z scores of the bond lengths (or angles).

Mol	Chain	Bond lengths		Bond angles	
		RMSZ	$\# Z  > 5$	RMSZ	$\# Z  > 5$
1	A	0.47	0/2661	0.66	2/3627 (0.1%)
1	B	0.52	0/2616	0.73	5/3572 (0.1%)
All	All	0.50	0/5277	0.70	7/7199 (0.1%)

There are no bond length outliers.

All (7) bond angle outliers are listed below:

Mol	Chain	Res	Type	Atoms	Z	Observed(°)	Ideal(°)
1	B	221	TYR	CB-CA-C	-6.53	97.33	110.40
1	B	122	LYS	CB-CA-C	-6.41	97.59	110.40
1	B	46	GLN	CB-CA-C	-6.12	98.17	110.40
1	A	221	TYR	CB-CA-C	-5.78	98.84	110.40
1	A	189	LEU	CA-CB-CG	5.57	128.10	115.30
1	B	123	LYS	N-CA-CB	-5.09	101.44	110.60
1	B	69	VAL	N-CA-CB	-5.08	100.31	111.50

There are no chirality outliers.

There are no planarity outliers.

### 5.2 Too-close contacts [i](#)

In the following table, the Non-H and H(model) columns list the number of non-hydrogen atoms and hydrogen atoms in the chain respectively. The H(added) column lists the number of hydrogen atoms added and optimized by MolProbity. The Clashes column lists the number of clashes within the asymmetric unit, whereas Symm-Clashes lists symmetry related clashes.

Mol	Chain	Non-H	H(model)	H(added)	Clashes	Symm-Clashes
1	A	2600	0	2558	45	0
1	B	2555	0	2514	37	0

*Continued on next page...*



*Continued from previous page...*

Mol	Chain	Non-H	H(model)	H(added)	Clashes	Symm-Clashes
2	A	25	0	15	21	0
2	B	25	0	15	5	0
3	B	5	0	0	0	0
4	A	204	0	0	2	0
4	B	203	0	0	0	0
All	All	5617	0	5102	89	0

The all-atom clashscore is defined as the number of clashes found per 1000 atoms (including hydrogen atoms). The all-atom clashscore for this structure is 9.

All (89) close contacts within the same asymmetric unit are listed below, sorted by their clash magnitude.

Atom-1	Atom-2	Interatomic distance (Å)	Clash overlap (Å)
1:A:85:LYS:NZ	2:A:421:Z92:C1	2.10	1.14
1:A:85:LYS:CD	2:A:421:Z92:H1A	1.76	1.13
2:A:421:Z92:H5	2:A:421:Z92:HN18	1.11	1.13
1:A:85:LYS:HZ2	2:A:421:Z92:H1	1.02	1.10
1:A:85:LYS:HD2	2:A:421:Z92:H1A	1.12	1.06
1:A:85:LYS:HZ2	2:A:421:Z92:C1	1.69	1.03
1:B:89:GLN:HE22	1:B:95:ASN:HB2	1.20	1.00
1:B:123:LYS:C	1:B:125:GLU:H	1.65	0.95
1:A:85:LYS:HD2	2:A:421:Z92:C1	1.96	0.94
1:A:85:LYS:CE	2:A:421:Z92:H1A	1.98	0.93
1:B:277:THR:H	1:B:280:GLN:HE21	1.18	0.92
1:A:85:LYS:NZ	2:A:421:Z92:H1	1.77	0.90
1:A:277:THR:H	1:A:280:GLN:HE21	1.19	0.90
1:B:277:THR:H	1:B:280:GLN:NE2	1.71	0.89
1:A:85:LYS:CE	2:A:421:Z92:C1	2.52	0.86
1:A:352:ASN:C	1:A:352:ASN:HD22	1.80	0.84
1:A:277:THR:H	1:A:280:GLN:NE2	1.77	0.81
1:B:167:ARG:HD3	1:B:362:PHE:CE1	2.16	0.81
1:B:167:ARG:HD2	1:B:366:GLU:OE2	1.79	0.81
2:A:421:Z92:O9	2:A:421:Z92:H1B	1.81	0.79
1:B:123:LYS:C	1:B:125:GLU:N	2.33	0.79
1:A:36:LYS:O	1:A:57:THR:HG22	1.82	0.77
1:B:108:ASN:HD21	1:B:164:GLN:HE21	1.33	0.76
2:A:421:Z92:H5	2:A:421:Z92:N18	1.96	0.74
1:A:110:VAL:HG21	1:A:188:LEU:HD12	1.69	0.74
1:B:40:VAL:HG21	1:B:116:PHE:CD1	2.23	0.73
1:B:67:PHE:CE1	1:B:68:GLY:O	2.41	0.73
1:A:352:ASN:ND2	1:A:354:ARG:H	1.87	0.72

*Continued on next page...*

*Continued from previous page...*

Atom-1	Atom-2	Interatomic distance (Å)	Clash overlap (Å)
1:A:85:LYS:NZ	2:A:421:Z92:H1B	2.05	0.71
1:A:37:VAL:HG22	1:A:57:THR:CG2	2.21	0.70
1:A:110:VAL:CG2	1:A:188:LEU:HD12	2.22	0.69
1:A:85:LYS:CD	2:A:421:Z92:C1	2.59	0.69
1:A:352:ASN:HD22	1:A:354:ARG:H	1.41	0.67
1:B:277:THR:N	1:B:280:GLN:HE21	1.93	0.65
1:B:336:ALA:HB2	1:B:377:LEU:HD21	1.78	0.65
1:A:85:LYS:HZ3	2:A:421:Z92:C1	2.07	0.65
1:B:370:ASN:HD22	1:B:372:PRO:HD2	1.63	0.64
1:A:113:ARG:HD3	1:A:133:ASP:OD2	2.00	0.61
1:A:85:LYS:HZ3	2:A:421:Z92:H1B	1.62	0.61
1:A:352:ASN:C	1:A:352:ASN:ND2	2.53	0.61
1:B:180:ARG:HD3	1:B:203:SER:O	2.00	0.60
1:B:373:LEU:O	1:B:377:LEU:HD23	2.01	0.60
1:B:135:VAL:O	2:B:422:Z92:H20	2.00	0.60
1:A:40:VAL:HG11	1:A:116:PHE:CG	2.37	0.59
1:A:180:ARG:HD3	1:A:203:SER:O	2.02	0.59
2:A:421:Z92:C1	2:A:421:Z92:O9	2.49	0.58
1:B:122:LYS:HB3	1:B:125:GLU:CD	2.23	0.58
1:B:185:GLN:H	1:B:185:GLN:HE21	1.50	0.57
1:B:113:ARG:NE	1:B:133:ASP:OD2	2.37	0.57
1:B:122:LYS:CB	1:B:125:GLU:HB2	2.35	0.57
1:A:277:THR:N	1:A:280:GLN:HE21	1.97	0.56
1:B:132:LEU:HD11	2:B:422:Z92:H10A	1.88	0.55
1:A:40:VAL:HG11	1:A:116:PHE:CD1	2.42	0.55
1:A:337:HIS:HD2	1:A:339:PHE:H	1.55	0.55
2:A:421:Z92:HN18	2:A:421:Z92:C5	2.01	0.54
1:A:337:HIS:CD2	1:A:339:PHE:H	2.26	0.54
1:B:122:LYS:HB3	1:B:125:GLU:CB	2.38	0.53
1:B:167:ARG:CD	1:B:366:GLU:OE2	2.56	0.53
1:A:110:VAL:HG21	1:A:188:LEU:CD1	2.40	0.52
1:A:28:VAL:HG21	1:A:36:LYS:HE3	1.91	0.51
1:B:122:LYS:HD3	1:B:125:GLU:OE1	2.10	0.51
1:B:123:LYS:O	1:B:125:GLU:N	2.44	0.51
1:A:133:ASP:O	2:A:421:Z92:N13	2.36	0.50
1:A:134:TYR:HA	2:A:421:Z92:O15	2.10	0.50
1:B:122:LYS:CB	1:B:125:GLU:CB	2.90	0.49
1:B:108:ASN:ND2	1:B:164:GLN:HE21	2.05	0.49
1:A:26:MET:HB2	1:A:40:VAL:HG22	1.96	0.48
1:B:214:VAL:CG2	1:B:217:ILE:HD13	2.43	0.48
1:A:126:VAL:N	4:A:530:HOH:O	2.48	0.47

*Continued on next page...*

Continued from previous page...

Atom-1	Atom-2	Interatomic distance (Å)	Clash overlap (Å)
1:A:30:ARG:HA	1:A:35:SER:O	2.14	0.47
1:A:118:SER:HB2	1:A:127:TYR:HB2	1.97	0.47
1:B:161:TYR:CE1	1:B:189:LEU:HD22	2.51	0.46
1:B:349:LYS:NZ	1:B:355:ASP:OD1	2.38	0.46
1:B:264:ASP:HA	1:B:267:VAL:HG22	1.96	0.46
1:A:221:TYR:CD1	1:A:258:PRO:HA	2.51	0.46
1:B:67:PHE:CD1	1:B:68:GLY:O	2.70	0.45
1:A:37:VAL:HG22	1:A:57:THR:HG21	1.98	0.44
1:B:336:ALA:HB2	1:B:377:LEU:CD2	2.46	0.44
1:B:60:LYS:HE2	1:B:60:LYS:HB3	1.88	0.43
1:A:215:SER:O	1:A:223:ARG:NH2	2.52	0.43
1:A:300:PRO:HA	4:A:560:HOH:O	2.17	0.42
1:B:362:PHE:CZ	1:B:377:LEU:HD12	2.55	0.41
1:A:132:LEU:HD13	2:A:421:Z92:H7	2.00	0.41
1:B:132:LEU:HD13	2:B:422:Z92:H7	2.02	0.41
1:B:215:SER:O	1:B:223:ARG:NH2	2.54	0.41
2:B:422:Z92:H5	2:B:422:Z92:N17	2.35	0.41
1:A:60:LYS:HB3	1:A:60:LYS:HE2	1.88	0.40
1:A:95:ASN:O	1:A:99:GLN:HG3	2.21	0.40
2:B:422:Z92:H1B	2:B:422:Z92:H4	1.81	0.40

There are no symmetry-related clashes.

## 5.3 Torsion angles ⓘ

### 5.3.1 Protein backbone ⓘ

In the following table, the Percentiles column shows the percent Ramachandran outliers of the chain as a percentile score with respect to all X-ray entries followed by that with respect to entries of similar resolution.

The Analysed column shows the number of residues for which the backbone conformation was analysed, and the total number of residues.

Mol	Chain	Analysed	Favoured	Allowed	Outliers	Percentiles	
1	A	328/414 (79%)	318 (97%)	10 (3%)	0	100	100
1	B	324/414 (78%)	312 (96%)	11 (3%)	1 (0%)	44	77
All	All	652/828 (79%)	630 (97%)	21 (3%)	1 (0%)	51	82

All (1) Ramachandran outliers are listed below:

Mol	Chain	Res	Type
1	B	124	ASP

### 5.3.2 Protein sidechains ⓘ

In the following table, the Percentiles column shows the percent sidechain outliers of the chain as a percentile score with respect to all X-ray entries followed by that with respect to entries of similar resolution.

The Analysed column shows the number of residues for which the sidechain conformation was analysed, and the total number of residues.

Mol	Chain	Analysed	Rotameric	Outliers	Percentiles	
1	A	280/359 (78%)	269 (96%)	11 (4%)	37	72
1	B	276/359 (77%)	258 (94%)	18 (6%)	20	49
All	All	556/718 (77%)	527 (95%)	29 (5%)	27	61

All (29) residues with a non-rotameric sidechain are listed below:

Mol	Chain	Res	Type
1	A	26	MET
1	A	46	GLN
1	A	52	GLN
1	A	64	ASN
1	A	104	LEU
1	A	151	GLN
1	A	152	THR
1	A	189	LEU
1	A	266	LEU
1	A	306	ARG
1	A	352	ASN
1	B	44	PRO
1	B	49	ASP
1	B	50	ARG
1	B	53	GLU
1	B	64	ASN
1	B	104	LEU
1	B	122	LYS
1	B	151	GLN
1	B	152	THR
1	B	167	ARG
1	B	185	GLN
1	B	206	GLN

*Continued on next page...*

*Continued from previous page...*

Mol	Chain	Res	Type
1	B	217	ILE
1	B	218	CYS
1	B	266	LEU
1	B	312	GLU
1	B	370	ASN
1	B	377	LEU

Some sidechains can be flipped to improve hydrogen bonding and reduce clashes. All (11) such sidechains are listed below:

Mol	Chain	Res	Type
1	A	46	GLN
1	A	151	GLN
1	A	280	GLN
1	A	337	HIS
1	A	352	ASN
1	B	52	GLN
1	B	89	GLN
1	B	164	GLN
1	B	185	GLN
1	B	280	GLN
1	B	370	ASN

### 5.3.3 RNA [i](#)

There are no RNA molecules in this entry.

## 5.4 Non-standard residues in protein, DNA, RNA chains [i](#)

There are no non-standard protein/DNA/RNA residues in this entry.

## 5.5 Carbohydrates [i](#)

There are no carbohydrates in this entry.

## 5.6 Ligand geometry [i](#)

3 ligands are modelled in this entry.

In the following table, the Counts columns list the number of bonds (or angles) for which Mogul statistics could be retrieved, the number of bonds (or angles) that are observed in the model and the number of bonds (or angles) that are defined in the Chemical Component Dictionary. The Link column lists molecule types, if any, to which the group is linked. The Z score for a bond length (or angle) is the number of standard deviations the observed value is removed from the expected value. A bond length (or angle) with  $|Z| > 2$  is considered an outlier worth inspection. RMSZ is the root-mean-square of all Z scores of the bond lengths (or angles).

Mol	Type	Chain	Res	Link	Bond lengths			Bond angles		
					Counts	RMSZ	# Z  > 2	Counts	RMSZ	# Z  > 2
2	Z92	A	421	-	26,27,27	2.24	6 (23%)	33,37,37	2.50	14 (42%)
3	PO4	B	421	-	4,4,4	2.85	3 (75%)	6,6,6	1.50	2 (33%)
2	Z92	B	422	-	26,27,27	2.36	10 (38%)	33,37,37	2.71	20 (60%)

In the following table, the Chirals column lists the number of chiral outliers, the number of chiral centers analysed, the number of these observed in the model and the number defined in the Chemical Component Dictionary. Similar counts are reported in the Torsion and Rings columns. '-' means no outliers of that kind were identified.

Mol	Type	Chain	Res	Link	Chirals	Torsions	Rings
2	Z92	A	421	-	-	0/13/26/26	0/3/3/3
3	PO4	B	421	-	-	0/0/0/0	0/0/0/0
2	Z92	B	422	-	-	0/13/26/26	0/3/3/3

All (19) bond length outliers are listed below:

Mol	Chain	Res	Type	Atoms	Z	Observed(Å)	Ideal(Å)
2	A	421	Z92	C16-C14	-5.84	1.39	1.50
2	B	422	Z92	C11-N12	-5.28	1.26	1.34
2	A	421	Z92	C11-N12	-4.98	1.27	1.34
2	B	422	Z92	C16-C14	-4.68	1.41	1.50
2	B	422	Z92	C16-N17	-3.61	1.27	1.31
2	A	421	Z92	C16-N17	-3.46	1.27	1.31
2	A	421	Z92	O15-C14	-3.42	1.17	1.23
2	A	421	Z92	N18-N17	-3.22	1.23	1.34
2	B	422	Z92	O15-C14	-3.20	1.17	1.23
2	B	422	Z92	O2-C3	-3.12	1.32	1.37
2	B	422	Z92	C6-C11	-3.09	1.43	1.48
2	B	422	Z92	O9-C8	-2.93	1.32	1.37
2	B	422	Z92	N18-N17	-2.58	1.25	1.34
2	A	421	Z92	C21-C20	-2.14	1.34	1.38
2	B	422	Z92	C20-C19	-2.12	1.35	1.39
2	B	422	Z92	C7-C8	-2.08	1.34	1.38
3	B	421	PO4	P-O4	2.13	1.61	1.54

*Continued on next page...*

*Continued from previous page...*

Mol	Chain	Res	Type	Atoms	Z	Observed(Å)	Ideal(Å)
3	B	421	PO4	P-O2	2.34	1.62	1.54
3	B	421	PO4	P-O1	4.67	1.60	1.50

All (36) bond angle outliers are listed below:

Mol	Chain	Res	Type	Atoms	Z	Observed(°)	Ideal(°)
2	A	421	Z92	O15-C14-C16	-5.98	121.34	126.85
2	A	421	Z92	C14-C16-N17	-5.48	117.33	127.49
2	B	422	Z92	O9-C8-C7	-5.04	115.68	124.17
2	B	422	Z92	C16-N17-N18	-5.03	111.36	120.61
2	B	422	Z92	C4-C5-C6	-3.53	116.85	120.79
2	A	421	Z92	O2-C3-C4	-3.48	118.53	124.37
2	B	422	Z92	O15-C14-C16	-3.30	123.81	126.85
2	B	422	Z92	C19-N18-N17	-3.21	115.13	119.51
2	B	422	Z92	C10-O9-C8	-3.08	113.11	117.54
2	B	422	Z92	O2-C3-C4	-2.91	119.49	124.37
2	A	421	Z92	C21-C22-CL23	-2.75	115.01	119.35
2	A	421	Z92	C19-N18-N17	-2.33	116.33	119.51
2	A	421	Z92	C11-C16-C14	-2.26	105.36	109.42
2	B	422	Z92	C6-C11-C16	-2.25	127.18	131.17
2	A	421	Z92	C20-C19-N18	-2.22	115.10	119.99
2	B	422	Z92	C21-C20-C19	-2.19	117.73	120.30
2	B	422	Z92	C7-C6-C11	-2.18	116.08	120.34
2	A	421	Z92	C1-O2-C3	-2.08	114.54	117.54
2	B	422	Z92	C1-O2-C3	-2.08	114.54	117.54
2	B	422	Z92	C11-C16-C14	-2.05	105.73	109.42
3	B	421	PO4	O4-P-O3	-2.04	100.41	107.90
2	B	422	Z92	C14-C16-N17	-2.00	123.78	127.49
2	B	422	Z92	C20-C19-C25	2.05	121.90	119.04
2	B	422	Z92	C20-C21-C22	2.16	121.53	119.24
2	B	422	Z92	C11-N12-N13	2.22	112.42	106.43
2	A	421	Z92	C11-N12-N13	2.52	113.23	106.43
3	B	421	PO4	O4-P-O2	2.54	117.22	107.90
2	A	421	Z92	O9-C8-C3	2.64	119.03	115.41
2	B	422	Z92	C5-C6-C7	2.86	122.60	119.23
2	B	422	Z92	O2-C3-C8	3.07	119.62	115.41
2	A	421	Z92	C10-O9-C8	3.13	122.04	117.54
2	A	421	Z92	C24-C22-CL23	3.28	124.53	119.35
2	A	421	Z92	C16-C14-N13	3.42	108.58	105.98
2	B	422	Z92	C6-C11-N12	4.68	126.68	119.99
2	A	421	Z92	O2-C3-C8	5.12	122.43	115.41
2	B	422	Z92	O9-C8-C3	7.30	125.42	115.41

There are no chirality outliers.

There are no torsion outliers.

There are no ring outliers.

2 monomers are involved in 26 short contacts:

Mol	Chain	Res	Type	Clashes	Symm-Clashes
2	A	421	Z92	21	0
2	B	422	Z92	5	0

## 5.7 Other polymers [i](#)

There are no such residues in this entry.

## 5.8 Polymer linkage issues [i](#)

There are no chain breaks in this entry.



## 6 Fit of model and data [i](#)

### 6.1 Protein, DNA and RNA chains [i](#)

In the following table, the column labelled ‘#RSRZ> 2’ contains the number (and percentage) of RSRZ outliers, followed by percent RSRZ outliers for the chain as percentile scores relative to all X-ray entries and entries of similar resolution. The OWAB column contains the minimum, median, 95<sup>th</sup> percentile and maximum values of the occupancy-weighted average B-factor per residue. The column labelled ‘Q< 0.9’ lists the number of (and percentage) of residues with an average occupancy less than 0.9.

Mol	Chain	Analysed	<RSRZ>	#RSRZ>2	OWAB(Å <sup>2</sup> )	Q<0.9
1	A	336/414 (81%)	-0.36	2 (0%) 89 88	18, 36, 73, 134	0
1	B	330/414 (79%)	-0.50	2 (0%) 89 88	16, 32, 61, 83	0
All	All	666/828 (80%)	-0.43	4 (0%) 89 88	16, 34, 68, 134	0

All (4) RSRZ outliers are listed below:

Mol	Chain	Res	Type	RSRZ
1	A	90	ASP	4.0
1	A	300	PRO	2.3
1	B	124	ASP	2.3
1	B	148	ARG	2.1

### 6.2 Non-standard residues in protein, DNA, RNA chains [i](#)

There are no non-standard protein/DNA/RNA residues in this entry.

### 6.3 Carbohydrates [i](#)

There are no carbohydrates in this entry.

### 6.4 Ligands [i](#)

In the following table, the Atoms column lists the number of modelled atoms in the group and the number defined in the chemical component dictionary. LLDF column lists the quality of electron density of the group with respect to its neighbouring residues in protein, DNA or RNA chains. The B-factors column lists the minimum, median, 95<sup>th</sup> percentile and maximum values of B factors of atoms in the group. The column labelled ‘Q< 0.9’ lists the number of atoms with occupancy less than 0.9.

Mol	Type	Chain	Res	Atoms	RSCC	RSR	LLDF	B-factors( $\text{\AA}^2$ )	Q<0.9
3	PO4	B	421	5/5	0.88	0.23	1.96	79,82,85,86	0
2	Z92	A	421	25/25	0.92	0.20	1.56	19,34,51,63	0
2	Z92	B	422	25/25	0.94	0.17	1.00	27,34,42,47	0

## 6.5 Other polymers [i](#)

There are no such residues in this entry.