



# Full wwPDB X-ray Structure Validation Report ⓘ

Feb 13, 2017 – 05:44 am GMT

PDB ID : 5L2J  
Title : Crystal Structure of human CD1b in complex with C36-GMM  
Authors : Gras, S.; Shahine, A.; Le Nours, J.; Rossjohn, J.  
Deposited on : 2016-08-02  
Resolution : 1.65 Å(reported)

This is a Full wwPDB X-ray Structure Validation Report for a publicly released PDB entry.

We welcome your comments at [validation@mail.wwpdb.org](mailto:validation@mail.wwpdb.org)

A user guide is available at

<http://wwpdb.org/validation/2016/XrayValidationReportHelp>

with specific help available everywhere you see the ⓘ symbol.

---

The following versions of software and data (see [references ⓘ](#)) were used in the production of this report:

MolProbity : 4.02b-467  
Mogul : 1.7.2 (RC1), CSD as538be (2017)  
Xtriage (Phenix) : 1.9-1692  
EDS : trunk28620  
Percentile statistics : 20161228.v01 (using entries in the PDB archive December 28th 2016)  
Refmac : 5.8.0135  
CCP4 : 6.5.0  
Ideal geometry (proteins) : Engh & Huber (2001)  
Ideal geometry (DNA, RNA) : Parkinson et al. (1996)  
Validation Pipeline (wwPDB-VP) : recalc28949

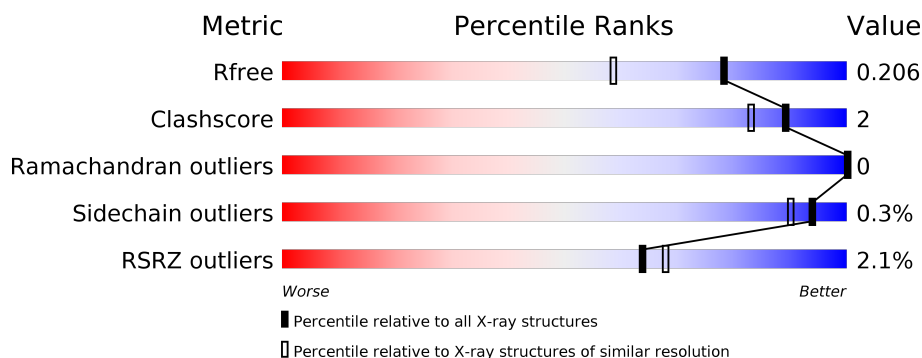
# 1 Overall quality at a glance

The following experimental techniques were used to determine the structure:

*X-RAY DIFFRACTION*

The reported resolution of this entry is 1.65 Å.

Percentile scores (ranging between 0-100) for global validation metrics of the entry are shown in the following graphic. The table shows the number of entries on which the scores are based.



Metric	Whole archive (#Entries)	Similar resolution (#Entries, resolution range(Å))
$R_{free}$	100719	1368 (1.66-1.66)
Clashscore	112137	1468 (1.66-1.66)
Ramachandran outliers	110173	1438 (1.66-1.66)
Sidechain outliers	110143	1438 (1.66-1.66)
RSRZ outliers	101464	1371 (1.66-1.66)

The table below summarises the geometric issues observed across the polymeric chains and their fit to the electron density. The red, orange, yellow and green segments on the lower bar indicate the fraction of residues that contain outliers for  $\geq 3$ , 2, 1 and 0 types of geometric quality criteria. A grey segment represents the fraction of residues that are not modelled. The numeric value for each fraction is indicated below the corresponding segment, with a dot representing fractions  $\leq 5\%$ . The upper red bar (where present) indicates the fraction of residues that have poor fit to the electron density. The numeric value is given above the bar.

Mol	Chain	Length	Quality of chain
1	A	300	<div> <div>2%</div> <div> <div></div> <div>88%</div> <div>5%</div> <div>7%</div> </div> </div>
2	B	98	<div> <div>%</div> <div> <div></div> <div>93%</div> <div>6%</div> </div> </div>

The following table lists non-polymeric compounds, carbohydrate monomers and non-standard residues in protein, DNA, RNA chains that are outliers for geometric or electron-density-fit criteria:

Mol	Type	Chain	Res	Chirality	Geometry	Clashes	Electron density
10	70E	A	414	-	-	-	X
3	6UL	A	401	-	-	-	X
7	MAN	A	407	-	-	-	X

## 2 Entry composition

There are 12 unique types of molecules in this entry. The entry contains 3618 atoms, of which 0 are hydrogens and 0 are deuteriums.

In the tables below, the ZeroOcc column contains the number of atoms modelled with zero occupancy, the AltConf column contains the number of residues with at least one atom in alternate conformation and the Trace column contains the number of residues modelled with at most 2 atoms.

- Molecule 1 is a protein called T-cell surface glycoprotein CD1b.

Mol	Chain	Residues	Atoms					ZeroOcc	AltConf	Trace
1	A	280	Total	C	N	O	S	0	11	0
			2244	1440	378	415	11			

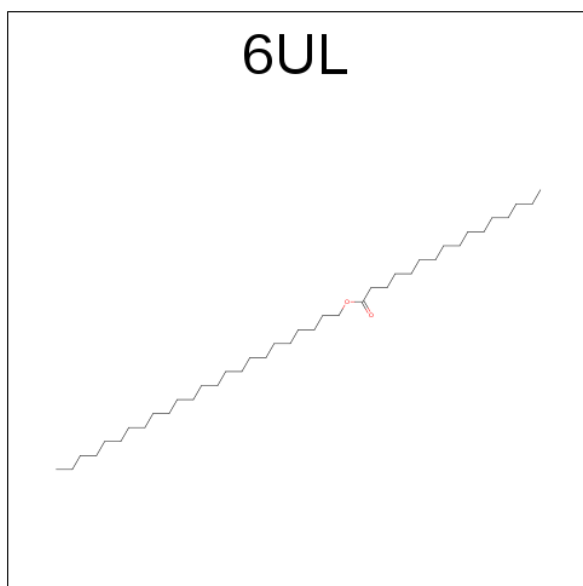
There are 23 discrepancies between the modelled and reference sequences:

Chain	Residue	Modelled	Actual	Comment	Reference
A	279	GLY	-	expression tag	UNP P29016
A	280	SER	-	expression tag	UNP P29016
A	281	GLY	-	expression tag	UNP P29016
A	282	LEU	-	expression tag	UNP P29016
A	283	ASN	-	expression tag	UNP P29016
A	284	ASP	-	expression tag	UNP P29016
A	285	ILE	-	expression tag	UNP P29016
A	286	PHE	-	expression tag	UNP P29016
A	287	GLU	-	expression tag	UNP P29016
A	288	ALA	-	expression tag	UNP P29016
A	289	GLN	-	expression tag	UNP P29016
A	290	LYS	-	expression tag	UNP P29016
A	291	ILE	-	expression tag	UNP P29016
A	292	GLU	-	expression tag	UNP P29016
A	293	TRP	-	expression tag	UNP P29016
A	294	HIS	-	expression tag	UNP P29016
A	295	GLU	-	expression tag	UNP P29016
A	296	HIS	-	expression tag	UNP P29016
A	297	HIS	-	expression tag	UNP P29016
A	298	HIS	-	expression tag	UNP P29016
A	299	HIS	-	expression tag	UNP P29016
A	300	HIS	-	expression tag	UNP P29016
A	301	HIS	-	expression tag	UNP P29016

- Molecule 2 is a protein called Beta-2-microglobulin.

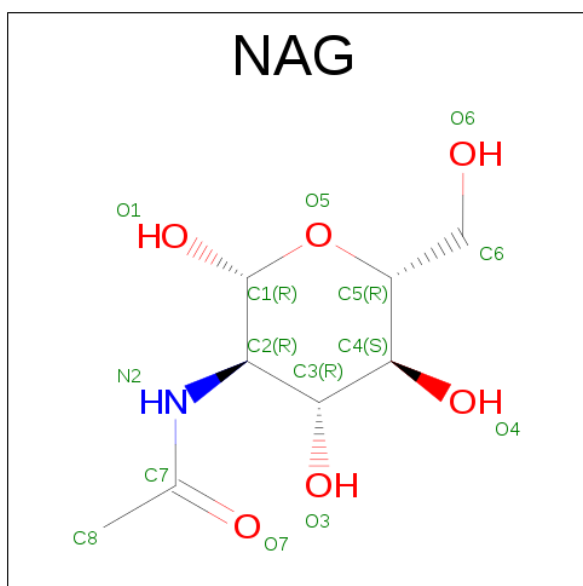
Mol	Chain	Residues	Atoms					ZeroOcc	AltConf	Trace
2	B	97	Total	C	N	O	S	0	3	0
			828	529	139	158	2			

- Molecule 3 is TETRACOSYL PALMITATE (three-letter code: 6UL) (formula:  $C_{40}H_{80}O_2$ ).



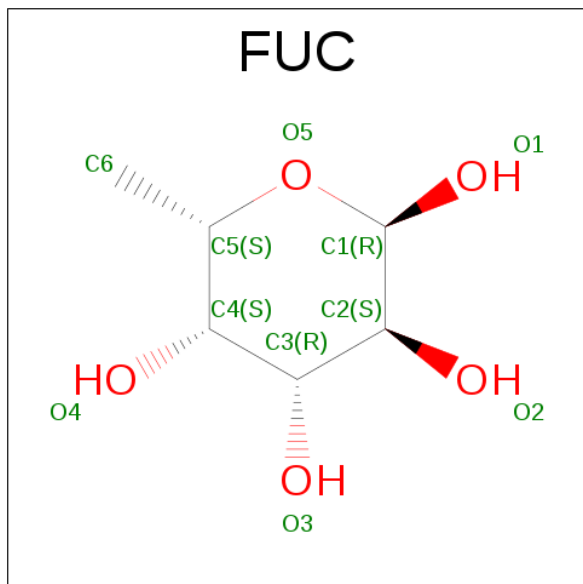
Mol	Chain	Residues	Atoms			ZeroOcc	AltConf
3	A	1	Total	C	O	0	0
			26	24	2		

- Molecule 4 is N-ACETYL-D-GLUCOSAMINE (three-letter code: NAG) (formula:  $C_8H_{15}NO_6$ ).



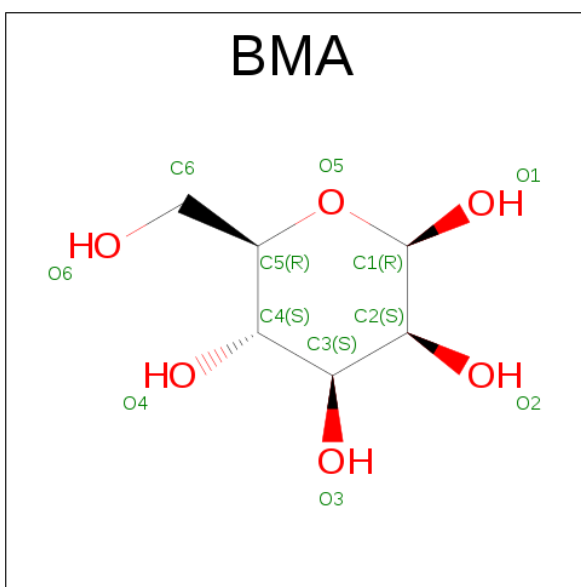
Mol	Chain	Residues	Atoms				ZeroOcc	AltConf
4	A	1	Total	C	N	O	0	0
			14	8	1	5		
4	A	1	Total	C	N	O	0	0
			14	8	1	5		
4	A	1	Total	C	N	O	0	0
			14	8	1	5		

- Molecule 5 is ALPHA-L-FUCOSE (three-letter code: FUC) (formula: C<sub>6</sub>H<sub>12</sub>O<sub>5</sub>).



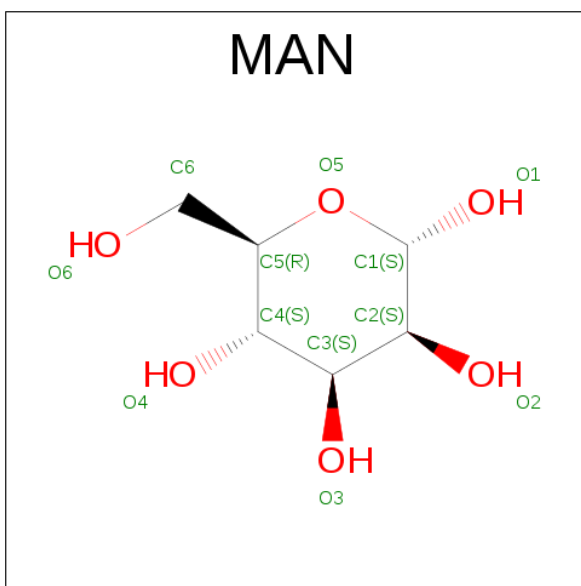
Mol	Chain	Residues	Atoms			ZeroOcc	AltConf
5	A	1	Total	C	O	0	0
			10	6	4		
5	A	1	Total	C	O	0	0
			10	6	4		

- Molecule 6 is BETA-D-MANNOSE (three-letter code: BMA) (formula: C<sub>6</sub>H<sub>12</sub>O<sub>6</sub>).



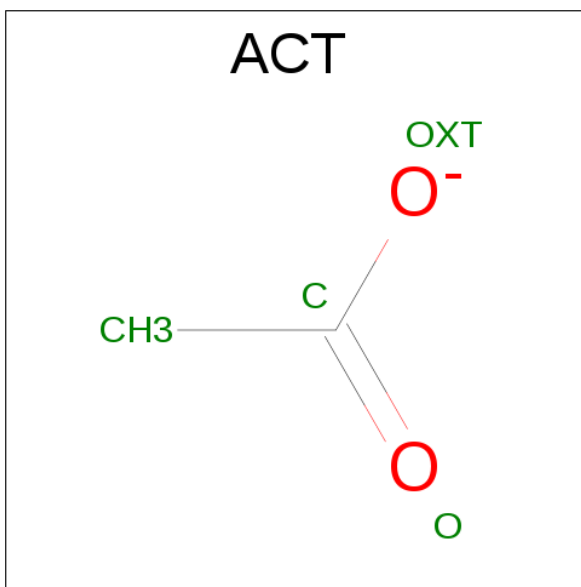
Mol	Chain	Residues	Atoms			ZeroOcc	AltConf
6	A	1	Total	C	O	0	0
			11	6	5		

- Molecule 7 is ALPHA-D-MANNOSE (three-letter code: MAN) (formula: C<sub>6</sub>H<sub>12</sub>O<sub>6</sub>).



Mol	Chain	Residues	Atoms			ZeroOcc	AltConf
7	A	1	Total	C	O	0	0
			11	6	5		
7	A	1	Total	C	O	0	0
			11	6	5		

- Molecule 8 is ACETATE ION (three-letter code: ACT) (formula: C<sub>2</sub>H<sub>3</sub>O<sub>2</sub>).



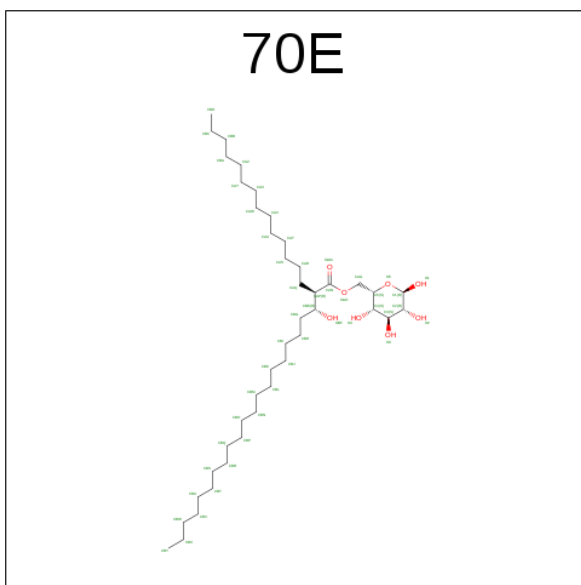
Mol	Chain	Residues	Atoms			ZeroOcc	AltConf
8	A	1	Total	C	O	0	0
			3	1	2		
8	A	1	Total	C	O	0	0
			3	1	2		

- Molecule 9 is CHLORIDE ION (three-letter code: CL) (formula: Cl).

Mol	Chain	Residues	Atoms		ZeroOcc	AltConf
9	A	2	Total	Cl	0	0
			2	2		

- Molecule 10 is 6-O-[(2R,3R)-3-hydroxy-2-tetradecyldocosanoyl]-alpha-L-idopyranose (three-letter code: 70E) (formula: C<sub>42</sub>H<sub>82</sub>O<sub>8</sub>).





Mol	Chain	Residues	Atoms			ZeroOcc	AltConf
10	A	1	Total	C	O	0	0
			50	42	8		

- Molecule 11 is SODIUM ION (three-letter code: NA) (formula: Na).

Mol	Chain	Residues	Atoms		ZeroOcc	AltConf
11	B	1	Total	Na	0	0
			1	1		

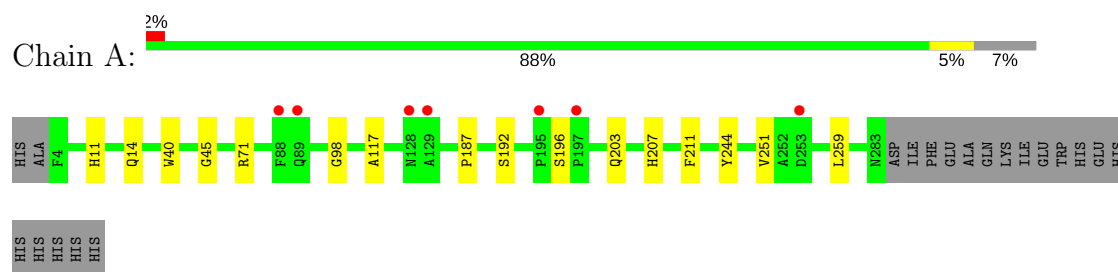
- Molecule 12 is water.

Mol	Chain	Residues	Atoms		ZeroOcc	AltConf
12	A	251	Total	O	0	0
			251	251		
12	B	115	Total	O	0	0
			115	115		

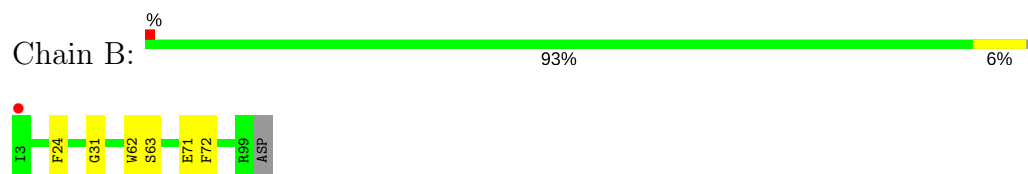
### 3 Residue-property plots [i](#)

These plots are drawn for all protein, RNA and DNA chains in the entry. The first graphic for a chain summarises the proportions of the various outlier classes displayed in the second graphic. The second graphic shows the sequence view annotated by issues in geometry and electron density. Residues are color-coded according to the number of geometric quality criteria for which they contain at least one outlier: green = 0, yellow = 1, orange = 2 and red = 3 or more. A red dot above a residue indicates a poor fit to the electron density ( $RSRZ > 2$ ). Stretches of 2 or more consecutive residues without any outlier are shown as a green connector. Residues present in the sample, but not in the model, are shown in grey.

- Molecule 1: T-cell surface glycoprotein CD1b



- Molecule 2: Beta-2-microglobulin



## 4 Data and refinement statistics

Property	Value	Source
Space group	P 21 21 21	Depositor
Cell constants a, b, c, $\alpha$ , $\beta$ , $\gamma$	57.66Å 78.11Å 91.33Å 90.00° 90.00° 90.00°	Depositor
Resolution (Å)	41.36 – 1.65 41.36 – 1.65	Depositor EDS
% Data completeness (in resolution range)	99.9 (41.36-1.65) 99.9 (41.36-1.65)	Depositor EDS
$R_{merge}$	(Not available)	Depositor
$R_{sym}$	(Not available)	Depositor
$\langle I/\sigma(I) \rangle$ <sup>1</sup>	2.02 (at 1.65Å)	Xtriage
Refinement program	BUSTER 2.10.0	Depositor
R, $R_{free}$	0.172 , 0.199 0.181 , 0.206	Depositor DCC
$R_{free}$ test set	2529 reflections (5.29%)	DCC
Wilson B-factor (Å <sup>2</sup> )	17.1	Xtriage
Anisotropy	0.141	Xtriage
Bulk solvent $k_{sol}$ (e/Å <sup>3</sup> ), $B_{sol}$ (Å <sup>2</sup> )	0.34 , 46.7	EDS
L-test for twinning <sup>2</sup>	$\langle  L  \rangle = 0.46$ , $\langle L^2 \rangle = 0.29$	Xtriage
Estimated twinning fraction	No twinning to report.	Xtriage
$F_o, F_c$ correlation	0.96	EDS
Total number of atoms	3618	wwPDB-VP
Average B, all atoms (Å <sup>2</sup> )	24.0	wwPDB-VP

Xtriage's analysis on translational NCS is as follows: *The largest off-origin peak in the Patterson function is 6.59% of the height of the origin peak. No significant pseudotranslation is detected.*

<sup>1</sup>Intensities estimated from amplitudes.

<sup>2</sup>Theoretical values of  $\langle |L| \rangle$ ,  $\langle L^2 \rangle$  for acentric reflections are 0.5, 0.333 respectively for untwinned datasets, and 0.375, 0.2 for perfectly twinned datasets.

## 5 Model quality [i](#)

### 5.1 Standard geometry [i](#)

Bond lengths and bond angles in the following residue types are not validated in this section: BMA, NAG, CL, NA, 6UL, FUC, ACT, 70E, MAN

The Z score for a bond length (or angle) is the number of standard deviations the observed value is removed from the expected value. A bond length (or angle) with  $|Z| > 5$  is considered an outlier worth inspection. RMSZ is the root-mean-square of all Z scores of the bond lengths (or angles).

Mol	Chain	Bond lengths		Bond angles	
		RMSZ	# Z  >5	RMSZ	# Z  >5
1	A	0.52	0/2335	0.65	0/3166
2	B	0.49	0/857	0.64	0/1162
All	All	0.51	0/3192	0.65	0/4328

There are no bond length outliers.

There are no bond angle outliers.

There are no chirality outliers.

There are no planarity outliers.

### 5.2 Too-close contacts [i](#)

In the following table, the Non-H and H(model) columns list the number of non-hydrogen atoms and hydrogen atoms in the chain respectively. The H(added) column lists the number of hydrogen atoms added and optimized by MolProbity. The Clashes column lists the number of clashes within the asymmetric unit, whereas Symm-Clashes lists symmetry related clashes.

Mol	Chain	Non-H	H(model)	H(added)	Clashes	Symm-Clashes
1	A	2244	0	2182	12	0
2	B	828	0	796	3	0
3	A	26	0	42	3	0
4	A	42	0	35	0	0
5	A	20	0	20	0	0
6	A	11	0	8	0	0
7	A	22	0	20	0	0
8	A	6	0	0	0	0
9	A	2	0	0	0	0
10	A	50	0	0	0	0
11	B	1	0	0	0	0

*Continued on next page...*

*Continued from previous page...*

Mol	Chain	Non-H	H(model)	H(added)	Clashes	Symm-Clashes
12	A	251	0	0	1	0
12	B	115	0	0	1	0
All	All	3618	0	3103	14	0

The all-atom clashscore is defined as the number of clashes found per 1000 atoms (including hydrogen atoms). The all-atom clashscore for this structure is 2.

All (14) close contacts within the same asymmetric unit are listed below, sorted by their clash magnitude.

Atom-1	Atom-2	Interatomic distance (Å)	Clash overlap (Å)
1:A:11:HIS:HE1	12:B:318:HOH:O	1.83	0.61
1:A:207:HIS:HD2	1:A:244:TYR:OH	1.84	0.61
1:A:187:PRO:HB3	1:A:211:PHE:HB3	1.84	0.58
2:B:31:GLY:HA2	2:B:63:SER:HB3	1.86	0.58
1:A:40:TRP:CE3	3:A:401:6UL:HBG2	2.46	0.50
1:A:192:SER:OG	1:A:207:HIS:HE1	1.95	0.49
1:A:196:SER:HB3	1:A:203:GLN:HB2	1.93	0.48
1:A:98:GLY:HA3	3:A:401:6UL:HAU1	1.97	0.46
1:A:14:GLN:HB2	3:A:401:6UL:HBL1	1.97	0.46
1:A:45:GLY:O	1:A:71[A]:ARG:HD3	2.18	0.43
1:A:251:VAL:HG11	1:A:259:LEU:HD11	2.01	0.43
2:B:24:PHE:CE1	2:B:71[B]:GLU:HG2	2.54	0.43
1:A:117:ALA:HB2	2:B:62:TRP:CE2	2.55	0.42
1:A:11:HIS:HD2	12:A:594:HOH:O	2.03	0.40

There are no symmetry-related clashes.

## 5.3 Torsion angles [i](#)

### 5.3.1 Protein backbone [i](#)

In the following table, the Percentiles column shows the percent Ramachandran outliers of the chain as a percentile score with respect to all X-ray entries followed by that with respect to entries of similar resolution.

The Analysed column shows the number of residues for which the backbone conformation was analysed, and the total number of residues.

Mol	Chain	Analysed	Favoured	Allowed	Outliers	Percentiles
1	A	289/300 (96%)	284 (98%)	5 (2%)	0	<b>100</b> <b>100</b>

*Continued on next page...*

*Continued from previous page...*

Mol	Chain	Analysed	Favoured	Allowed	Outliers	Percentiles	
2	B	98/98 (100%)	97 (99%)	1 (1%)	0	100	100
All	All	387/398 (97%)	381 (98%)	6 (2%)	0	100	100

There are no Ramachandran outliers to report.

### 5.3.2 Protein sidechains ⓘ

In the following table, the Percentiles column shows the percent sidechain outliers of the chain as a percentile score with respect to all X-ray entries followed by that with respect to entries of similar resolution.

The Analysed column shows the number of residues for which the sidechain conformation was analysed, and the total number of residues.

Mol	Chain	Analysed	Rotameric	Outliers	Percentiles	
1	A	240/247 (97%)	240 (100%)	0	100	100
2	B	95/93 (102%)	94 (99%)	1 (1%)	78	61
All	All	335/340 (98%)	334 (100%)	1 (0%)	94	90

All (1) residues with a non-rotameric sidechain are listed below:

Mol	Chain	Res	Type
2	B	72	PHE

Some sidechains can be flipped to improve hydrogen bonding and reduce clashes. All (3) such sidechains are listed below:

Mol	Chain	Res	Type
1	A	11	HIS
1	A	207	HIS
2	B	4	GLN

### 5.3.3 RNA ⓘ

There are no RNA molecules in this entry.

## 5.4 Non-standard residues in protein, DNA, RNA chains ⓘ

There are no non-standard protein/DNA/RNA residues in this entry.

## 5.5 Carbohydrates [i](#)

There are no carbohydrates in this entry.

## 5.6 Ligand geometry [i](#)

Of 15 ligands modelled in this entry, 3 are monoatomic - leaving 12 for Mogul analysis.

In the following table, the Counts columns list the number of bonds (or angles) for which Mogul statistics could be retrieved, the number of bonds (or angles) that are observed in the model and the number of bonds (or angles) that are defined in the chemical component dictionary. The Link column lists molecule types, if any, to which the group is linked. The Z score for a bond length (or angle) is the number of standard deviations the observed value is removed from the expected value. A bond length (or angle) with  $|Z| > 2$  is considered an outlier worth inspection. RMSZ is the root-mean-square of all Z scores of the bond lengths (or angles).

Mol	Type	Chain	Res	Link	Bond lengths			Bond angles		
					Counts	RMSZ	# Z  > 2	Counts	RMSZ	# Z  > 2
3	6UL	A	401	-	25,25,41	0.46	0	25,25,41	0.84	0
4	NAG	A	402	1	14,14,15	0.43	0	15,19,21	1.15	1 (6%)
4	NAG	A	403	1,5,4	14,14,15	0.75	1 (7%)	15,19,21	1.17	1 (6%)
5	FUC	A	404	4	9,10,11	0.81	0	13,14,16	1.01	1 (7%)
4	NAG	A	405	4,6	14,14,15	0.65	0	15,19,21	0.88	1 (6%)
6	BMA	A	406	4,7	11,11,12	0.62	0	13,15,17	1.29	2 (15%)
7	MAN	A	407	6	11,11,12	0.33	0	13,15,17	0.81	1 (7%)
5	FUC	A	408	4	9,10,11	0.62	0	13,14,16	0.97	0
7	MAN	A	409	6	11,11,12	0.25	0	13,15,17	0.83	1 (7%)
8	ACT	A	410	-	0,2,3	0.00	-	0,1,3	0.00	-
8	ACT	A	411	-	0,2,3	0.00	-	0,1,3	0.00	-
10	70E	A	414	-	50,50,50	0.90	5 (10%)	56,58,58	1.36	7 (12%)

In the following table, the Chirals column lists the number of chiral outliers, the number of chiral centers analysed, the number of these observed in the model and the number defined in the chemical component dictionary. Similar counts are reported in the Torsion and Rings columns. '-' means no outliers of that kind were identified.

Mol	Type	Chain	Res	Link	Chirals	Torsions	Rings
3	6UL	A	401	-	-	0/24/24/40	0/0/0/0
4	NAG	A	402	1	-	0/6/23/26	0/1/1/1
4	NAG	A	403	1,5,4	-	0/6/23/26	0/1/1/1
5	FUC	A	404	4	-	0/0/17/20	0/1/1/1
4	NAG	A	405	4,6	-	0/6/23/26	0/1/1/1
6	BMA	A	406	4,7	-	0/2/19/22	0/1/1/1

*Continued on next page...*

*Continued from previous page...*

Mol	Type	Chain	Res	Link	Chirals	Torsions	Rings
7	MAN	A	407	6	-	0/2/19/22	0/1/1/1
5	FUC	A	408	4	-	0/0/17/20	0/1/1/1
7	MAN	A	409	6	-	0/2/19/22	0/1/1/1
8	ACT	A	410	-	-	0/0/0/0	0/0/0/0
8	ACT	A	411	-	-	0/0/0/0	0/0/0/0
10	70E	A	414	-	-	0/46/66/66	0/1/1/1

All (6) bond length outliers are listed below:

Mol	Chain	Res	Type	Atoms	Z	Observed(Å)	Ideal(Å)
10	A	414	70E	O5-C5	2.00	1.49	1.44
4	A	403	NAG	C1-C2	2.04	1.55	1.52
10	A	414	70E	CAP-CAN	2.31	1.55	1.51
10	A	414	70E	C4-C5	2.39	1.58	1.53
10	A	414	70E	OAO-CAN	2.53	1.38	1.33
10	A	414	70E	O5-C1	2.56	1.47	1.43

All (15) bond angle outliers are listed below:

Mol	Chain	Res	Type	Atoms	Z	Observed(°)	Ideal(°)
10	A	414	70E	CBH-CBG-CBE	-2.52	109.98	114.22
10	A	414	70E	OAM-CAN-CAP	-2.31	119.41	124.64
10	A	414	70E	CBG-CBE-CAP	-2.09	110.39	113.28
6	A	406	BMA	C6-C5-C4	-2.01	108.29	113.00
4	A	402	NAG	O3-C3-C2	2.01	113.69	109.39
4	A	403	NAG	C2-N2-C7	2.10	126.00	122.94
5	A	404	FUC	C1-O5-C5	2.42	117.73	112.39
4	A	405	NAG	C6-C5-C4	2.44	118.71	113.00
7	A	407	MAN	C1-O5-C5	2.61	115.77	112.17
10	A	414	70E	O5-C5-C4	2.70	114.63	109.66
7	A	409	MAN	C1-O5-C5	2.74	115.94	112.17
10	A	414	70E	C1-O5-C5	2.83	118.50	113.39
6	A	406	BMA	C1-O5-C5	3.34	116.77	112.17
10	A	414	70E	OAO-CAN-CAP	3.40	115.69	111.34
10	A	414	70E	O5-C5-CAG	4.91	116.43	106.64

There are no chirality outliers.

There are no torsion outliers.

There are no ring outliers.

1 monomer is involved in 3 short contacts:



Mol	Chain	Res	Type	Clashes	Symm-Clashes
3	A	401	6UL	3	0

## 5.7 Other polymers [i](#)

There are no such residues in this entry.

## 5.8 Polymer linkage issues [i](#)

There are no chain breaks in this entry.

## 6 Fit of model and data [i](#)

### 6.1 Protein, DNA and RNA chains [i](#)

In the following table, the column labelled ‘#RSRZ> 2’ contains the number (and percentage) of RSRZ outliers, followed by percent RSRZ outliers for the chain as percentile scores relative to all X-ray entries and entries of similar resolution. The OWAB column contains the minimum, median, 95<sup>th</sup> percentile and maximum values of the occupancy-weighted average B-factor per residue. The column labelled ‘Q< 0.9’ lists the number of (and percentage) of residues with an average occupancy less than 0.9.

Mol	Chain	Analysed	<RSRZ>	#RSRZ>2	OWAB(Å <sup>2</sup> )	Q<0.9
1	A	280/300 (93%)	-0.11	7 (2%) 58 60	9, 19, 43, 69	0
2	B	97/98 (98%)	-0.13	1 (1%) 82 85	10, 21, 44, 57	0
All	All	377/398 (94%)	-0.12	8 (2%) 64 68	9, 19, 44, 69	0

All (8) RSRZ outliers are listed below:

Mol	Chain	Res	Type	RSRZ
1	A	89	GLN	6.6
1	A	128	ASN	3.9
1	A	197	PRO	3.8
1	A	88	PHE	3.3
1	A	195	PRO	3.0
2	B	3	ILE	2.7
1	A	129	ALA	2.2
1	A	253	ASP	2.0

### 6.2 Non-standard residues in protein, DNA, RNA chains [i](#)

There are no non-standard protein/DNA/RNA residues in this entry.

### 6.3 Carbohydrates [i](#)

There are no carbohydrates in this entry.

### 6.4 Ligands [i](#)

In the following table, the Atoms column lists the number of modelled atoms in the group and the number defined in the chemical component dictionary. LLDF column lists the quality of electron density of the group with respect to its neighbouring residues in protein, DNA or RNA chains.

The B-factors column lists the minimum, median, 95<sup>th</sup> percentile and maximum values of B factors of atoms in the group. The column labelled 'Q< 0.9' lists the number of atoms with occupancy less than 0.9.

Mol	Type	Chain	Res	Atoms	RSCC	RSR	LLDF	B-factors(Å <sup>2</sup> )	Q<0.9
7	MAN	A	407	11/12	0.94	0.10	6.48	15,17,23,24	0
10	70E	A	414	50/50	0.69	0.22	4.86	35,52,88,89	0
3	6UL	A	401	26/42	0.82	0.17	4.82	33,38,41,46	0
5	FUC	A	404	10/11	0.94	0.11	1.19	18,21,23,25	0
11	NA	B	201	1/1	0.93	0.11	1.17	29,29,29,29	0
4	NAG	A	402	14/15	0.89	0.12	0.79	27,37,42,43	0
7	MAN	A	409	11/12	0.96	0.10	0.07	21,24,29,29	0
6	BMA	A	406	11/12	0.97	0.05	-0.68	16,17,18,18	0
4	NAG	A	403	14/15	0.97	0.05	-0.80	14,15,18,18	0
4	NAG	A	405	14/15	0.96	0.06	-0.80	13,17,23,31	0
9	CL	A	413	1/1	0.97	0.05	-2.56	25,25,25,25	0
8	ACT	A	411	3/4	0.61	0.14	-	56,56,56,57	0
5	FUC	A	408	10/11	0.94	0.15	-	21,28,32,35	0
9	CL	A	412	1/1	0.99	0.05	-	17,17,17,17	0
8	ACT	A	410	3/4	0.80	0.13	-	45,45,46,54	0

## 6.5 Other polymers [i](#)

There are no such residues in this entry.