



# wwPDB X-ray Structure Validation Summary Report ⓘ

Aug 27, 2017 – 06:23 PM EDT

PDB ID : 5L6J  
Title : Uba1 in complex with Ub-MLN7243 covalent adduct  
Authors : Misra, M.; Schindelin, H.  
Deposited on : unknown  
Resolution : 2.68 Å(reported)

This is a wwPDB X-ray Structure Validation Summary Report for a publicly released PDB entry.

We welcome your comments at [validation@mail.wwpdb.org](mailto:validation@mail.wwpdb.org)

A user guide is available at

<http://wwpdb.org/validation/2016/XrayValidationReportHelp>

with specific help available everywhere you see the ⓘ symbol.

---

The following versions of software and data (see [references ⓘ](#)) were used in the production of this report:

MolProbity : 4.02b-467  
Mogul : 1.7.2 (RC1), CSD as538be (2017)  
Xtriage (Phenix) : 1.9-1692  
EDS : rb-20029824  
Percentile statistics : 20161228.v01 (using entries in the PDB archive December 28th 2016)  
Refmac : 5.8.0135  
CCP4 : 6.5.0  
Ideal geometry (proteins) : Engh & Huber (2001)  
Ideal geometry (DNA, RNA) : Parkinson et al. (1996)  
Validation Pipeline (wwPDB-VP) : rb-20029824

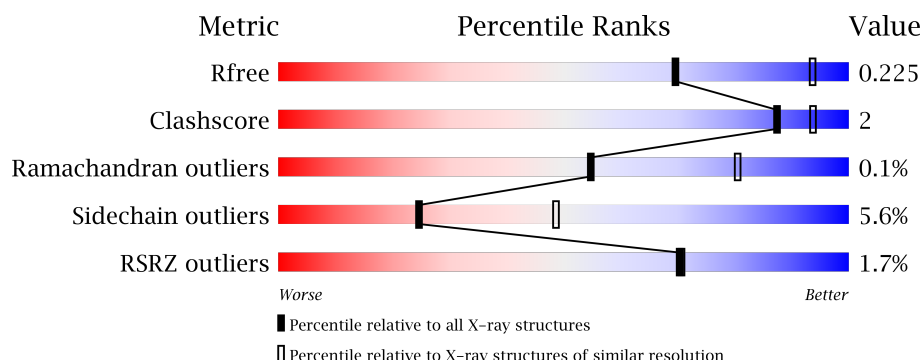
# 1 Overall quality at a glance ⓘ

The following experimental techniques were used to determine the structure:

## *X-RAY DIFFRACTION*

The reported resolution of this entry is 2.68 Å.

Percentile scores (ranging between 0-100) for global validation metrics of the entry are shown in the following graphic. The table shows the number of entries on which the scores are based.



Metric	Whole archive (#Entries)	Similar resolution (#Entries, resolution range(Å))
$R_{free}$	100719	3050 (2.70-2.66)
Clashscore	112137	3418 (2.70-2.66)
Ramachandran outliers	110173	3367 (2.70-2.66)
Sidechain outliers	110143	3367 (2.70-2.66)
RSRZ outliers	101464	3069 (2.70-2.66)

The table below summarises the geometric issues observed across the polymeric chains and their fit to the electron density. The red, orange, yellow and green segments on the lower bar indicate the fraction of residues that contain outliers for  $\geq 3$ , 2, 1 and 0 types of geometric quality criteria. A grey segment represents the fraction of residues that are not modelled. The numeric value for each fraction is indicated below the corresponding segment, with a dot representing fractions  $\leq 5\%$ . The upper red bar (where present) indicates the fraction of residues that have poor fit to the electron density. The numeric value is given above the bar.

Mol	Chain	Length	Quality of chain
1	A	1024	<div> <div>2%</div> <div>87%</div> <div>9%</div> <div>..</div> </div>
1	C	1024	<div> <div>%</div> <div>87%</div> <div>10%</div> <div>..</div> </div>
2	B	76	<div> <div>89%</div> <div>8%</div> <div>.</div> </div>
2	D	76	<div> <div>%</div> <div>92%</div> <div>5%</div> <div>.</div> </div>

The following table lists non-polymeric compounds, carbohydrate monomers and non-standard residues in protein, DNA, RNA chains that are outliers for geometric or electron-density-fit crite-

ria:

Mol	Type	Chain	Res	Chirality	Geometry	Clashes	Electron density
4	CL	A	1103	-	-	-	X
5	GOL	A	1105	-	-	-	X
5	GOL	A	1109	-	-	-	X
5	GOL	A	1111	-	-	-	X
5	GOL	C	1105	-	-	-	X
5	GOL	C	1107	-	-	-	X
5	GOL	C	1108	-	-	-	X
5	GOL	C	1109	-	-	-	X

## 2 Entry composition [i](#)

There are 7 unique types of molecules in this entry. The entry contains 17935 atoms, of which 0 are hydrogens and 0 are deuteriums.

In the tables below, the ZeroOcc column contains the number of atoms modelled with zero occupancy, the AltConf column contains the number of residues with at least one atom in alternate conformation and the Trace column contains the number of residues modelled with at most 2 atoms.

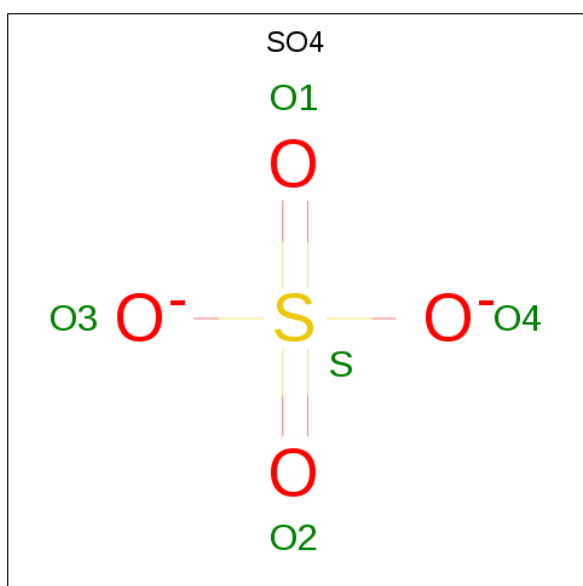
- Molecule 1 is a protein called Ubiquitin-activating enzyme E1 1.

Mol	Chain	Residues	Atoms					ZeroOcc	AltConf	Trace
1	A	1006	Total	C	N	O	S	0	0	0
			7945	5062	1312	1548	23			
1	C	1003	Total	C	N	O	S	0	1	0
			7927	5053	1310	1541	23			

- Molecule 2 is a protein called Ubiquitin-40S ribosomal protein S31.

Mol	Chain	Residues	Atoms					ZeroOcc	AltConf	Trace
2	B	76	Total	C	N	O	S	0	1	0
			608	380	108	119	1			
2	D	76	Total	C	N	O	S	0	1	0
			608	380	108	119	1			

- Molecule 3 is SULFATE ION (three-letter code: SO4) (formula: O<sub>4</sub>S).



Mol	Chain	Residues	Atoms	ZeroOcc	AltConf
3	A	1	Total O S 5 4 1	0	0
3	A	1	Total O S 5 4 1	0	0
3	C	1	Total O S 5 4 1	0	0

- Molecule 4 is CHLORIDE ION (three-letter code: CL) (formula: Cl).

Mol	Chain	Residues	Atoms	ZeroOcc	AltConf
4	A	2	Total Cl 2 2	0	0
4	C	2	Total Cl 2 2	0	0

- Molecule 5 is GLYCEROL (three-letter code: GOL) (formula: C<sub>3</sub>H<sub>8</sub>O<sub>3</sub>).



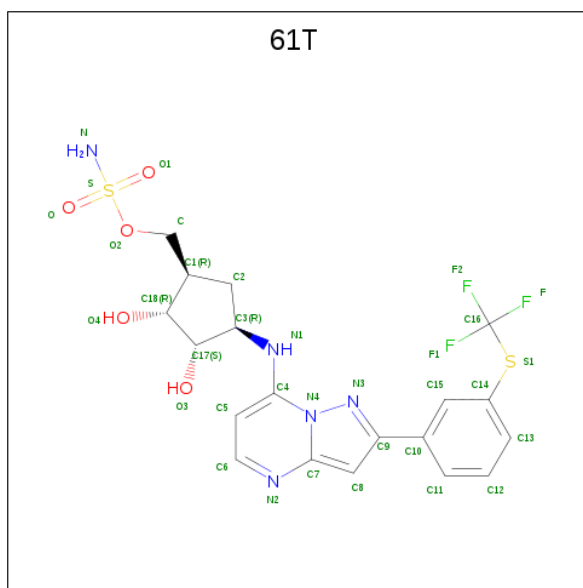
Mol	Chain	Residues	Atoms	ZeroOcc	AltConf
5	A	1	Total C O 6 3 3	0	0
5	A	1	Total C O 6 3 3	0	0
5	A	1	Total C O 6 3 3	0	0
5	A	1	Total C O 6 3 3	0	0
5	A	1	Total C O 6 3 3	0	0

*Continued on next page...*

Continued from previous page...

Mol	Chain	Residues	Atoms			ZeroOcc	AltConf
5	A	1	Total	C	O	0	0
			6	3	3		
5	A	1	Total	C	O	0	0
			6	3	3		
5	C	1	Total	C	O	0	0
			6	3	3		
5	C	1	Total	C	O	0	0
			6	3	3		
5	C	1	Total	C	O	0	0
			6	3	3		
5	C	1	Total	C	O	0	0
			6	3	3		
5	C	1	Total	C	O	0	0
			6	3	3		
5	C	1	Total	C	O	0	0
			6	3	3		
5	C	1	Total	C	O	0	0
			6	3	3		

- Molecule 6 is [(1 {R},2 {R},3 {S},4 {R})-2,3-bis(oxidanyl)-4-[[2-[3-(trifluoromethylsulfanyl)phenyl]pyrazolo[1,5-a]pyrimidin-7-yl]amino]cyclopentyl]methyl sulfamate (three-letter code: 61T) (formula: C<sub>19</sub>H<sub>20</sub>F<sub>3</sub>N<sub>5</sub>O<sub>5</sub>S<sub>2</sub>).



Mol	Chain	Residues	Atoms						ZeroOcc	AltConf
6	B	1	Total	C	F	N	O	S	0	0
			34	19	3	5	5	2		
6	D	1	Total	C	F	N	O	S	0	0
			34	19	3	5	5	2		

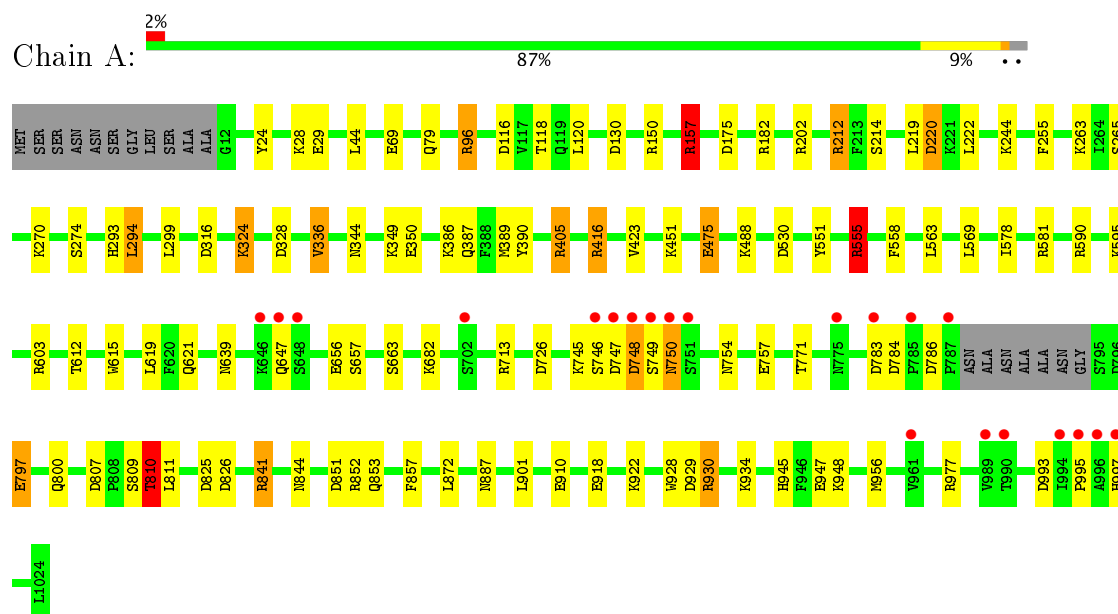
- Molecule 7 is water.

Mol	Chain	Residues	Atoms		ZeroOcc	AltConf
7	A	331	Total	O	0	0
			331	331		
7	B	18	Total	O	0	0
			18	18		
7	C	302	Total	O	0	0
			302	302		
7	D	13	Total	O	0	0
			13	13		

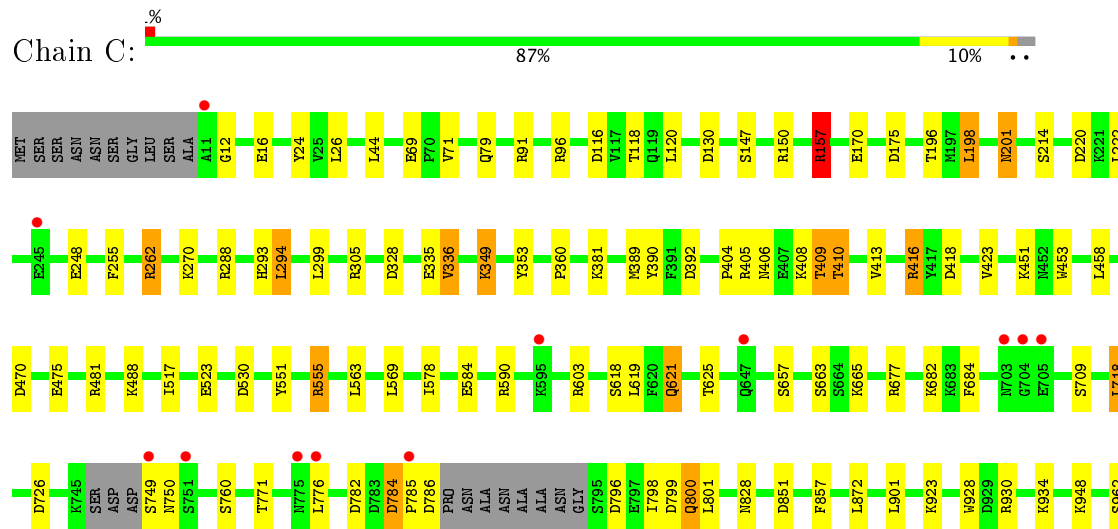
### 3 Residue-property plots

These plots are drawn for all protein, RNA and DNA chains in the entry. The first graphic for a chain summarises the proportions of the various outlier classes displayed in the second graphic. The second graphic shows the sequence view annotated by issues in geometry and electron density. Residues are color-coded according to the number of geometric quality criteria for which they contain at least one outlier: green = 0, yellow = 1, orange = 2 and red = 3 or more. A red dot above a residue indicates a poor fit to the electron density ( $RSRZ > 2$ ). Stretches of 2 or more consecutive residues without any outlier are shown as a green connector. Residues present in the sample, but not in the model, are shown in grey.

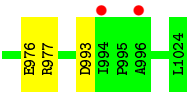
- Molecule 1: Ubiquitin-activating enzyme E1 1



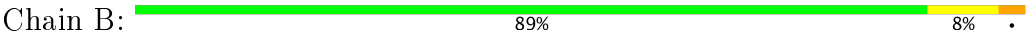
- Molecule 1: Ubiquitin-activating enzyme E1 1



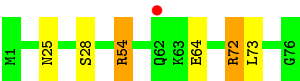




● Molecule 2: Ubiquitin-40S ribosomal protein S31



● Molecule 2: Ubiquitin-40S ribosomal protein S31



## 4 Data and refinement statistics

Property	Value	Source
Space group	P 2 <sub>1</sub> 2 <sub>1</sub> 2 <sub>1</sub>	Depositor
Cell constants a, b, c, $\alpha$ , $\beta$ , $\gamma$	72.48Å 193.92Å 230.22Å 90.00° 90.00° 90.00°	Depositor
Resolution (Å)	20.00 – 2.68 48.48 – 2.68	Depositor EDS
% Data completeness (in resolution range)	99.0 (20.00-2.68) 99.3 (48.48-2.68)	Depositor EDS
$R_{merge}$	(Not available)	Depositor
$R_{sym}$	0.13	Depositor
$\langle I/\sigma(I) \rangle$ <sup>1</sup>	1.97 (at 2.69Å)	Xtriage
Refinement program	REFMAC 5.8.0155	Depositor
R, $R_{free}$	0.171 , 0.224 0.176 , 0.225	Depositor DCC
$R_{free}$ test set	4495 reflections (5.18%)	DCC
Wilson B-factor (Å <sup>2</sup> )	42.7	Xtriage
Anisotropy	0.495	Xtriage
Bulk solvent $k_{sol}$ (e/Å <sup>3</sup> ), $B_{sol}$ (Å <sup>2</sup> )	0.31 , 32.9	EDS
L-test for twinning <sup>2</sup>	$\langle  L  \rangle = 0.48$ , $\langle L^2 \rangle = 0.32$	Xtriage
Estimated twinning fraction	No twinning to report.	Xtriage
$F_o, F_c$ correlation	0.95	EDS
Total number of atoms	17935	wwPDB-VP
Average B, all atoms (Å <sup>2</sup> )	49.0	wwPDB-VP

Xtriage's analysis on translational NCS is as follows: *The largest off-origin peak in the Patterson function is 2.11% of the height of the origin peak. No significant pseudotranslation is detected.*

<sup>1</sup>Intensities estimated from amplitudes.

<sup>2</sup>Theoretical values of  $\langle |L| \rangle$ ,  $\langle L^2 \rangle$  for acentric reflections are 0.5, 0.333 respectively for untwinned datasets, and 0.375, 0.2 for perfectly twinned datasets.

## 5 Model quality [i](#)

### 5.1 Standard geometry [i](#)

Bond lengths and bond angles in the following residue types are not validated in this section: GOL, SO4, 61T, CL

The Z score for a bond length (or angle) is the number of standard deviations the observed value is removed from the expected value. A bond length (or angle) with  $|Z| > 5$  is considered an outlier worth inspection. RMSZ is the root-mean-square of all Z scores of the bond lengths (or angles).

Mol	Chain	Bond lengths		Bond angles	
		RMSZ	# Z  >5	RMSZ	# Z  >5
1	A	0.93	4/8110 (0.0%)	1.04	36/10975 (0.3%)
1	C	0.93	4/8093 (0.0%)	1.02	29/10949 (0.3%)
2	B	0.92	0/616	1.17	5/826 (0.6%)
2	D	0.82	0/616	1.08	2/826 (0.2%)
All	All	0.93	8/17435 (0.0%)	1.04	72/23576 (0.3%)

Chiral center outliers are detected by calculating the chiral volume of a chiral center and verifying if the center is modelled as a planar moiety or with the opposite hand. A planarity outlier is detected by checking planarity of atoms in a peptide group, atoms in a mainchain group or atoms of a sidechain that are expected to be planar.

Mol	Chain	#Chirality outliers	#Planarity outliers
1	A	0	1

The worst 5 of 8 bond length outliers are listed below:

Mol	Chain	Res	Type	Atoms	Z	Observed(Å)	Ideal(Å)
1	C	584	GLU	CD-OE1	7.09	1.33	1.25
1	C	147	SER	CB-OG	-6.46	1.33	1.42
1	A	274	SER	CB-OG	-5.53	1.35	1.42
1	A	475	GLU	CD-OE1	5.34	1.31	1.25
1	C	170	GLU	CD-OE1	5.31	1.31	1.25

The worst 5 of 72 bond angle outliers are listed below:

Mol	Chain	Res	Type	Atoms	Z	Observed(°)	Ideal(°)
1	A	841	ARG	NE-CZ-NH2	-10.46	115.07	120.30
1	C	416	ARG	NE-CZ-NH2	-10.27	115.16	120.30
1	C	150	ARG	NE-CZ-NH2	9.29	124.94	120.30
1	A	130	ASP	CB-CG-OD1	9.22	126.60	118.30

*Continued on next page...*

*Continued from previous page...*

Mol	Chain	Res	Type	Atoms	Z	Observed(°)	Ideal(°)
1	A	726	ASP	CB-CG-OD1	9.20	126.58	118.30

There are no chirality outliers.

All (1) planarity outliers are listed below:

Mol	Chain	Res	Type	Group
1	A	219	LEU	Peptide

## 5.2 Too-close contacts [i](#)

In the following table, the Non-H and H(model) columns list the number of non-hydrogen atoms and hydrogen atoms in the chain respectively. The H(added) column lists the number of hydrogen atoms added and optimized by MolProbity. The Clashes column lists the number of clashes within the asymmetric unit, whereas Symm-Clashes lists symmetry related clashes.

Mol	Chain	Non-H	H(model)	H(added)	Clashes	Symm-Clashes
1	A	7945	0	7846	42	0
1	C	7927	0	7838	35	0
2	B	608	0	638	3	0
2	D	608	0	638	2	0
3	A	10	0	0	0	0
3	C	5	0	0	0	0
4	A	2	0	0	1	0
4	C	2	0	0	0	0
5	A	42	0	56	1	0
5	C	54	0	72	1	0
6	B	34	0	0	0	0
6	D	34	0	0	1	0
7	A	331	0	0	9	0
7	B	18	0	0	0	0
7	C	302	0	0	2	0
7	D	13	0	0	0	0
All	All	17935	0	17088	81	0

The all-atom clashscore is defined as the number of clashes found per 1000 atoms (including hydrogen atoms). The all-atom clashscore for this structure is 2.

The worst 5 of 81 close contacts within the same asymmetric unit are listed below, sorted by their clash magnitude.

Atom-1	Atom-2	Interatomic distance (Å)	Clash overlap (Å)
1:A:810:THR:HG22	1:A:811:LEU:HG	1.66	0.76
1:A:294:LEU:HD13	1:A:336:VAL:HG21	1.68	0.76
1:C:294:LEU:HD13	1:C:336:VAL:HG21	1.67	0.75
1:C:116:ASP:OD1	1:C:118:THR:HB	1.89	0.72
1:C:569:LEU:HB3	2:D:73:LEU:HD22	1.71	0.71

There are no symmetry-related clashes.

## 5.3 Torsion angles [i](#)

### 5.3.1 Protein backbone [i](#)

In the following table, the Percentiles column shows the percent Ramachandran outliers of the chain as a percentile score with respect to all X-ray entries followed by that with respect to entries of similar resolution.

The Analysed column shows the number of residues for which the backbone conformation was analysed, and the total number of residues.

Mol	Chain	Analysed	Favoured	Allowed	Outliers	Percentiles	
1	A	1002/1024 (98%)	970 (97%)	31 (3%)	1 (0%)	55	80
1	C	998/1024 (98%)	966 (97%)	31 (3%)	1 (0%)	55	80
2	B	75/76 (99%)	74 (99%)	1 (1%)	0	100	100
2	D	75/76 (99%)	73 (97%)	2 (3%)	0	100	100
All	All	2150/2200 (98%)	2083 (97%)	65 (3%)	2 (0%)	55	80

All (2) Ramachandran outliers are listed below:

Mol	Chain	Res	Type
1	A	747	ASP
1	C	796	ASP

### 5.3.2 Protein sidechains [i](#)

In the following table, the Percentiles column shows the percent sidechain outliers of the chain as a percentile score with respect to all X-ray entries followed by that with respect to entries of similar resolution.

The Analysed column shows the number of residues for which the sidechain conformation was analysed, and the total number of residues.

Mol	Chain	Analysed	Rotameric	Outliers	Percentiles	
1	A	889/900 (99%)	841 (95%)	48 (5%)	26	51
1	C	886/900 (98%)	833 (94%)	53 (6%)	22	45
2	B	70/69 (101%)	66 (94%)	4 (6%)	24	48
2	D	70/69 (101%)	66 (94%)	4 (6%)	24	48
All	All	1915/1938 (99%)	1806 (94%)	109 (6%)	25	48

5 of 109 residues with a non-rotameric sidechain are listed below:

Mol	Chain	Res	Type
2	B	63	LYS
1	C	220	ASP
1	C	923	LYS
2	B	74[A]	ARG
1	C	120	LEU

Some sidechains can be flipped to improve hydrogen bonding and reduce clashes. 5 of 7 such sidechains are listed below:

Mol	Chain	Res	Type
1	C	35	GLN
2	D	2	GLN
1	C	201	ASN
1	A	984	GLN
1	C	750	ASN

### 5.3.3 RNA ⓘ

There are no RNA molecules in this entry.

## 5.4 Non-standard residues in protein, DNA, RNA chains ⓘ

There are no non-standard protein/DNA/RNA residues in this entry.

## 5.5 Carbohydrates ⓘ

There are no carbohydrates in this entry.

## 5.6 Ligand geometry

Of 25 ligands modelled in this entry, 4 are monoatomic - leaving 21 for Mogul analysis.

In the following table, the Counts columns list the number of bonds (or angles) for which Mogul statistics could be retrieved, the number of bonds (or angles) that are observed in the model and the number of bonds (or angles) that are defined in the chemical component dictionary. The Link column lists molecule types, if any, to which the group is linked. The Z score for a bond length (or angle) is the number of standard deviations the observed value is removed from the expected value. A bond length (or angle) with  $|Z| > 2$  is considered an outlier worth inspection. RMSZ is the root-mean-square of all Z scores of the bond lengths (or angles).

Mol	Type	Chain	Res	Link	Bond lengths			Bond angles		
					Counts	RMSZ	# Z  > 2	Counts	RMSZ	# Z  > 2
3	SO4	A	1101	-	4,4,4	0.56	0	6,6,6	0.68	0
3	SO4	A	1102	-	4,4,4	0.45	0	6,6,6	0.19	0
5	GOL	A	1105	-	5,5,5	0.73	0	5,5,5	1.25	0
5	GOL	A	1106	-	5,5,5	0.82	0	5,5,5	0.73	0
5	GOL	A	1107	-	5,5,5	0.73	0	5,5,5	0.75	0
5	GOL	A	1108	-	5,5,5	0.77	0	5,5,5	0.56	0
5	GOL	A	1109	-	5,5,5	0.81	0	5,5,5	0.65	0
5	GOL	A	1110	-	5,5,5	0.61	0	5,5,5	0.76	0
5	GOL	A	1111	-	5,5,5	0.77	0	5,5,5	0.75	0
6	61T	B	101	2	32,37,37	2.46	8 (25%)	42,56,56	2.58	11 (26%)
3	SO4	C	1101	-	4,4,4	0.68	0	6,6,6	1.27	1 (16%)
5	GOL	C	1104	-	5,5,5	0.53	0	5,5,5	0.52	0
5	GOL	C	1105	-	5,5,5	0.90	0	5,5,5	0.72	0
5	GOL	C	1106	-	5,5,5	0.70	0	5,5,5	0.41	0
5	GOL	C	1107	-	5,5,5	0.60	0	5,5,5	0.73	0
5	GOL	C	1108	-	5,5,5	1.09	0	5,5,5	1.14	0
5	GOL	C	1109	-	5,5,5	0.75	0	5,5,5	0.72	0
5	GOL	C	1110	-	5,5,5	0.58	0	5,5,5	0.53	0
5	GOL	C	1111	-	5,5,5	0.50	0	5,5,5	0.78	0
5	GOL	C	1112	-	5,5,5	0.40	0	5,5,5	0.47	0
6	61T	D	101	2	32,37,37	2.22	8 (25%)	42,56,56	2.51	14 (33%)

In the following table, the Chirals column lists the number of chiral outliers, the number of chiral centers analysed, the number of these observed in the model and the number defined in the chemical component dictionary. Similar counts are reported in the Torsion and Rings columns. '-' means no outliers of that kind were identified.

Mol	Type	Chain	Res	Link	Chirals	Torsions	Rings
3	SO4	A	1101	-	-	0/0/0/0	0/0/0/0
3	SO4	A	1102	-	-	0/0/0/0	0/0/0/0
5	GOL	A	1105	-	-	0/4/4/4	0/0/0/0

*Continued on next page...*

*Continued from previous page...*

Mol	Type	Chain	Res	Link	Chirals	Torsions	Rings
5	GOL	A	1106	-	-	0/4/4/4	0/0/0/0
5	GOL	A	1107	-	-	0/4/4/4	0/0/0/0
5	GOL	A	1108	-	-	0/4/4/4	0/0/0/0
5	GOL	A	1109	-	-	0/4/4/4	0/0/0/0
5	GOL	A	1110	-	-	0/4/4/4	0/0/0/0
5	GOL	A	1111	-	-	0/4/4/4	0/0/0/0
6	61T	B	101	2	-	0/19/35/35	0/4/4/4
3	SO4	C	1101	-	-	0/0/0/0	0/0/0/0
5	GOL	C	1104	-	-	0/4/4/4	0/0/0/0
5	GOL	C	1105	-	-	0/4/4/4	0/0/0/0
5	GOL	C	1106	-	-	0/4/4/4	0/0/0/0
5	GOL	C	1107	-	-	0/4/4/4	0/0/0/0
5	GOL	C	1108	-	-	0/4/4/4	0/0/0/0
5	GOL	C	1109	-	-	0/4/4/4	0/0/0/0
5	GOL	C	1110	-	-	0/4/4/4	0/0/0/0
5	GOL	C	1111	-	-	0/4/4/4	0/0/0/0
5	GOL	C	1112	-	-	0/4/4/4	0/0/0/0
6	61T	D	101	2	-	0/19/35/35	0/4/4/4

The worst 5 of 16 bond length outliers are listed below:

Mol	Chain	Res	Type	Atoms	Z	Observed(Å)	Ideal(Å)
6	B	101	61T	C14-S1	-7.99	1.68	1.78
6	D	101	61T	C14-S1	-5.92	1.71	1.78
6	B	101	61T	C17-C3	-5.70	1.48	1.53
6	D	101	61T	C17-C3	-5.53	1.49	1.53
6	B	101	61T	C2-C3	-3.41	1.48	1.54

The worst 5 of 26 bond angle outliers are listed below:

Mol	Chain	Res	Type	Atoms	Z	Observed(°)	Ideal(°)
6	B	101	61T	O1-S-O	-11.83	109.41	119.98
6	D	101	61T	O1-S-O	-11.02	110.12	119.98
6	D	101	61T	C2-C1-C	-5.77	102.02	112.40
6	B	101	61T	C15-C14-S1	-3.20	116.12	120.06
6	D	101	61T	C5-C6-N2	-2.96	119.98	124.58

There are no chirality outliers.

There are no torsion outliers.

There are no ring outliers.

3 monomers are involved in 3 short contacts:



Mol	Chain	Res	Type	Clashes	Symm-Clashes
5	A	1110	GOL	1	0
5	C	1107	GOL	1	0
6	D	101	61T	1	0

## 5.7 Other polymers [i](#)

There are no such residues in this entry.

## 5.8 Polymer linkage issues [i](#)

There are no chain breaks in this entry.

## 6 Fit of model and data [i](#)

### 6.1 Protein, DNA and RNA chains [i](#)

In the following table, the column labelled ‘#RSRZ> 2’ contains the number (and percentage) of RSRZ outliers, followed by percent RSRZ outliers for the chain as percentile scores relative to all X-ray entries and entries of similar resolution. The OWAB column contains the minimum, median, 95<sup>th</sup> percentile and maximum values of the occupancy-weighted average B-factor per residue. The column labelled ‘Q< 0.9’ lists the number of (and percentage) of residues with an average occupancy less than 0.9.

Mol	Chain	Analysed	<RSRZ>	#RSRZ>2	OWAB(Å <sup>2</sup> )	Q<0.9
1	A	1006/1024 (98%)	-0.36	21 (2%) 64 63	26, 44, 90, 150	0
1	C	1003/1024 (97%)	-0.35	14 (1%) 75 75	26, 45, 91, 141	0
2	B	76/76 (100%)	-0.10	0 100 100	28, 50, 75, 88	0
2	D	76/76 (100%)	-0.23	1 (1%) 77 77	39, 57, 84, 89	0
All	All	2161/2200 (98%)	-0.34	36 (1%) 70 71	26, 45, 89, 150	0

The worst 5 of 36 RSRZ outliers are listed below:

Mol	Chain	Res	Type	RSRZ
1	A	747	ASP	4.3
1	A	647	GLN	4.3
1	A	750	ASN	4.2
1	A	646	LYS	3.7
1	A	748	ASP	3.5

### 6.2 Non-standard residues in protein, DNA, RNA chains [i](#)

There are no non-standard protein/DNA/RNA residues in this entry.

### 6.3 Carbohydrates [i](#)

There are no carbohydrates in this entry.

### 6.4 Ligands [i](#)

In the following table, the Atoms column lists the number of modelled atoms in the group and the number defined in the chemical component dictionary. LLDF column lists the quality of electron density of the group with respect to its neighbouring residues in protein, DNA or RNA chains. The B-factors column lists the minimum, median, 95<sup>th</sup> percentile and maximum values of B factors

of atoms in the group. The column labelled 'Q < 0.9' lists the number of atoms with occupancy less than 0.9.

Mol	Type	Chain	Res	Atoms	RSCC	RSR	LLDF	B-factors( $\text{\AA}^2$ )	Q<0.9
5	GOL	A	1109	6/6	0.87	0.33	9.09	62,70,75,80	0
5	GOL	C	1108	6/6	0.84	0.24	8.32	57,63,67,69	0
5	GOL	C	1107	6/6	0.87	0.34	8.03	60,66,67,67	0
5	GOL	A	1111	6/6	0.91	0.24	7.30	57,63,66,67	0
5	GOL	C	1105	6/6	0.57	0.27	7.00	56,72,77,77	0
5	GOL	A	1105	6/6	0.92	0.23	5.70	47,52,56,58	0
4	CL	A	1103	1/1	0.93	0.25	3.90	56,56,56,56	0
5	GOL	C	1109	6/6	0.94	0.24	2.83	52,63,64,66	0
5	GOL	A	1107	6/6	0.96	0.21	1.43	37,51,54,55	0
6	61T	D	101	34/34	0.95	0.16	1.06	26,49,79,82	0
5	GOL	C	1106	6/6	0.96	0.17	0.86	38,42,44,47	0
6	61T	B	101	34/34	0.96	0.15	0.83	26,35,54,57	0
5	GOL	A	1110	6/6	0.86	0.14	0.58	50,56,59,66	0
5	GOL	C	1112	6/6	0.97	0.15	0.46	42,46,46,49	0
5	GOL	C	1104	6/6	0.86	0.16	0.15	64,68,71,72	0
3	SO4	C	1101	5/5	0.99	0.11	-1.34	26,27,31,33	0
3	SO4	A	1102	5/5	0.90	0.17	-1.93	99,101,110,110	0
3	SO4	A	1101	5/5	0.99	0.09	-2.62	28,29,32,33	0
4	CL	C	1102	1/1	0.89	0.08	-	62,62,62,62	0
4	CL	A	1104	1/1	0.88	0.11	-	59,59,59,59	0
4	CL	C	1103	1/1	0.89	0.11	-	64,64,64,64	0
5	GOL	C	1111	6/6	0.82	0.31	-	51,60,69,75	0
5	GOL	A	1106	6/6	0.66	0.36	-	71,86,89,90	0
5	GOL	A	1108	6/6	0.83	0.17	-	60,63,66,67	0
5	GOL	C	1110	6/6	0.82	0.17	-	76,83,85,87	0

## 6.5 Other polymers [i](#)

There are no such residues in this entry.