



wwPDB X-ray Structure Validation Summary Report ⓘ

Feb 13, 2017 – 11:55 pm GMT

PDB ID : 3L9H
Title : X-ray structure of mitotic kinesin-5 (KSP, KIF11, Eg5)in complex with the h
exahydro-2H-pyrano[3,2-c]quinoline EMD 534085
Authors : Knoechel, T.
Deposited on : 2010-01-05
Resolution : 2.00 Å(reported)

This is a wwPDB X-ray Structure Validation Summary Report for a publicly released PDB entry.

We welcome your comments at validation@mail.wwpdb.org

A user guide is available at

<http://wwpdb.org/validation/2016/XrayValidationReportHelp>

with specific help available everywhere you see the ⓘ symbol.

The following versions of software and data (see [references ⓘ](#)) were used in the production of this report:

MolProbity : 4.02b-467
Mogul : 1.7.2 (RC1), CSD as538be (2017)
Xtriage (Phenix) : 1.9-1692
EDS : trunk28620
Percentile statistics : 20161228.v01 (using entries in the PDB archive December 28th 2016)
Refmac : 5.8.0135
CCP4 : 6.5.0
Ideal geometry (proteins) : Engh & Huber (2001)
Ideal geometry (DNA, RNA) : Parkinson et al. (1996)
Validation Pipeline (wwPDB-VP) : recalc28949

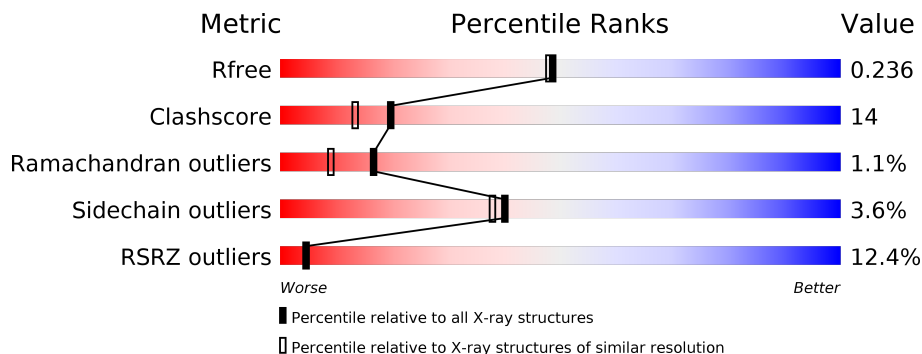
1 Overall quality at a glance

The following experimental techniques were used to determine the structure:

X-RAY DIFFRACTION

The reported resolution of this entry is 2.00 Å.

Percentile scores (ranging between 0-100) for global validation metrics of the entry are shown in the following graphic. The table shows the number of entries on which the scores are based.



Metric	Whole archive (#Entries)	Similar resolution (#Entries, resolution range(Å))
R_{free}	100719	6609 (2.00-2.00)
Clashscore	112137	7775 (2.00-2.00)
Ramachandran outliers	110173	7679 (2.00-2.00)
Sidechain outliers	110143	7678 (2.00-2.00)
RSRZ outliers	101464	6696 (2.00-2.00)

The table below summarises the geometric issues observed across the polymeric chains and their fit to the electron density. The red, orange, yellow and green segments on the lower bar indicate the fraction of residues that contain outliers for ≥ 3 , 2, 1 and 0 types of geometric quality criteria. A grey segment represents the fraction of residues that are not modelled. The numeric value for each fraction is indicated below the corresponding segment, with a dot representing fractions $\leq 5\%$. The upper red bar (where present) indicates the fraction of residues that have poor fit to the electron density. The numeric value is given above the bar.

Mol	Chain	Length	Quality of chain
1	A	368	<div> <div>13%</div> <div> <div></div> <div>67%</div> <div>21%</div> <div>•</div> <div>10%</div> </div> </div>
1	B	368	<div> <div>10%</div> <div> <div></div> <div>66%</div> <div>22%</div> <div>•</div> <div>10%</div> </div> </div>

2 Entry composition [i](#)

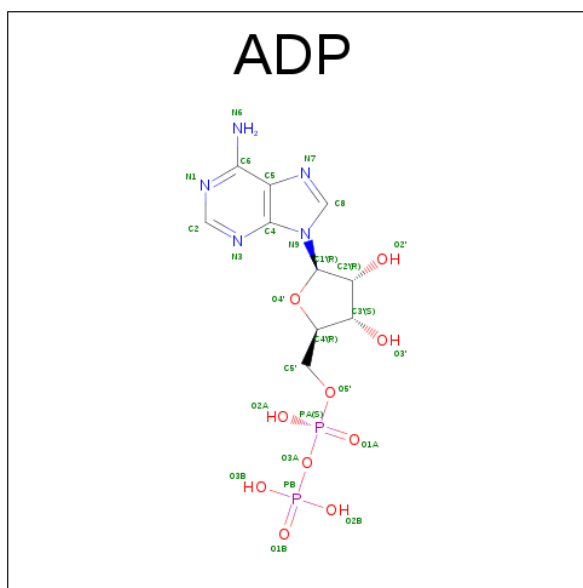
There are 4 unique types of molecules in this entry. The entry contains 5603 atoms, of which 0 are hydrogens and 0 are deuteriums.

In the tables below, the ZeroOcc column contains the number of atoms modelled with zero occupancy, the AltConf column contains the number of residues with at least one atom in alternate conformation and the Trace column contains the number of residues modelled with at most 2 atoms.

- Molecule 1 is a protein called Kinesin-like protein KIF11.

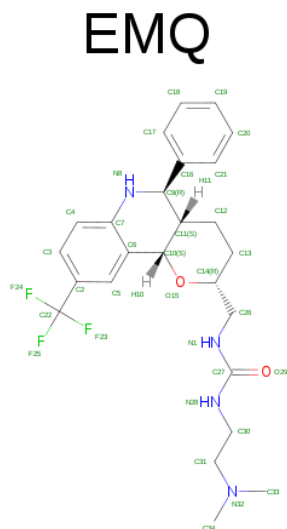
Mol	Chain	Residues	Atoms					ZeroOcc	AltConf	Trace
1	A	331	Total	C	N	O	S	0	0	0
			2599	1628	453	508	10			
1	B	331	Total	C	N	O	S	0	0	0
			2599	1628	453	508	10			

- Molecule 2 is ADENOSINE-5'-DIPHOSPHATE (three-letter code: ADP) (formula: $C_{10}H_{15}N_5O_{10}P_2$).



Mol	Chain	Residues	Atoms					ZeroOcc	AltConf
2	A	1	Total	C	N	O	P	0	0
			27	10	5	10	2		
2	B	1	Total	C	N	O	P	0	0
			27	10	5	10	2		

- Molecule 3 is 1-[2-(DIMETHYLAMINO)ETHYL]-3-{[(2R,4AS,5R,10BS)-5-PHENYL-9-(TRIFLUOROMETHYL)-3,4,4A,5,6,10B-HEXAHYDRO-2H-PYRANO[3,2-C]QUINOLIN-2-YL]METHYL}UREA (three-letter code: EMQ) (formula: $C_{25}H_{31}F_3N_4O_2$).



Mol	Chain	Residues	Atoms					ZeroOcc	AltConf
3	A	1	Total 34	C 25	F 3	N 4	O 2	0	0
3	B	1	Total 34	C 25	F 3	N 4	O 2	0	0

- Molecule 4 is water.

Mol	Chain	Residues	Atoms	ZeroOcc	AltConf
4	A	144	Total O 144 144	0	0
4	B	139	Total O 139 139	0	0

4 Data and refinement statistics

Property	Value	Source
Space group	C 1 2 1	Depositor
Cell constants a, b, c, α , β , γ	160.95Å 79.72Å 69.51Å 90.00° 96.88° 90.00°	Depositor
Resolution (Å)	30.00 – 2.00 35.69 – 2.00	Depositor EDS
% Data completeness (in resolution range)	88.0 (30.00-2.00) 88.0 (35.69-2.00)	Depositor EDS
R_{merge}	(Not available)	Depositor
R_{sym}	0.06	Depositor
$\langle I/\sigma(I) \rangle$ ¹	2.59 (at 2.00Å)	Xtriage
Refinement program	CNS	Depositor
R, R_{free}	0.234 , 0.258 0.232 , 0.236	Depositor DCC
R_{free} test set	2638 reflections (5.36%)	DCC
Wilson B-factor (Å ²)	32.6	Xtriage
Anisotropy	0.047	Xtriage
Bulk solvent k_{sol} (e/Å ³), B_{sol} (Å ²)	0.36 , 52.2	EDS
L-test for twinning ²	$\langle L \rangle = 0.50$, $\langle L^2 \rangle = 0.34$	Xtriage
Estimated twinning fraction	No twinning to report.	Xtriage
F_o, F_c correlation	0.94	EDS
Total number of atoms	5603	wwPDB-VP
Average B, all atoms (Å ²)	39.0	wwPDB-VP

Xtriage's analysis on translational NCS is as follows: *The largest off-origin peak in the Patterson function is 9.48% of the height of the origin peak. No significant pseudotranslation is detected.*

¹Intensities estimated from amplitudes.

²Theoretical values of $\langle |L| \rangle$, $\langle L^2 \rangle$ for acentric reflections are 0.5, 0.333 respectively for untwinned datasets, and 0.375, 0.2 for perfectly twinned datasets.

5 Model quality

5.1 Standard geometry

Bond lengths and bond angles in the following residue types are not validated in this section: EMQ, ADP

The Z score for a bond length (or angle) is the number of standard deviations the observed value is removed from the expected value. A bond length (or angle) with $|Z| > 5$ is considered an outlier worth inspection. RMSZ is the root-mean-square of all Z scores of the bond lengths (or angles).

Mol	Chain	Bond lengths		Bond angles	
		RMSZ	$\# Z > 5$	RMSZ	$\# Z > 5$
1	A	0.32	0/2637	0.61	0/3564
1	B	0.31	0/2637	0.60	0/3564
All	All	0.31	0/5274	0.60	0/7128

There are no bond length outliers.

There are no bond angle outliers.

There are no chirality outliers.

There are no planarity outliers.

5.2 Too-close contacts

In the following table, the Non-H and H(model) columns list the number of non-hydrogen atoms and hydrogen atoms in the chain respectively. The H(added) column lists the number of hydrogen atoms added and optimized by MolProbity. The Clashes column lists the number of clashes within the asymmetric unit, whereas Symm-Clashes lists symmetry related clashes.

Mol	Chain	Non-H	H(model)	H(added)	Clashes	Symm-Clashes
1	A	2599	0	2628	77	0
1	B	2599	0	2628	82	0
2	A	27	0	12	0	0
2	B	27	0	12	0	0
3	A	34	0	31	0	0
3	B	34	0	31	1	0
4	A	144	0	0	11	0
4	B	139	0	0	2	0
All	All	5603	0	5342	152	0

The all-atom clashscore is defined as the number of clashes found per 1000 atoms (including hydrogen atoms). The all-atom clashscore for this structure is 14.

The worst 5 of 152 close contacts within the same asymmetric unit are listed below, sorted by their clash magnitude.

Atom-1	Atom-2	Interatomic distance (Å)	Clash overlap (Å)
1:A:167:GLU:HG2	1:A:181:ARG:HH21	1.05	1.09
1:B:167:GLU:HG2	1:B:181:ARG:HH21	1.18	1.04
1:A:153:GLU:HB3	1:A:246:LYS:HB3	1.55	0.89
1:A:248:THR:HG22	1:A:254:GLU:HG2	1.57	0.84
1:A:249:THR:HG22	1:A:250:ILE:HD13	1.62	0.82

There are no symmetry-related clashes.

5.3 Torsion angles [i](#)

5.3.1 Protein backbone [i](#)

In the following table, the Percentiles column shows the percent Ramachandran outliers of the chain as a percentile score with respect to all X-ray entries followed by that with respect to entries of similar resolution.

The Analysed column shows the number of residues for which the backbone conformation was analysed, and the total number of residues.

Mol	Chain	Analysed	Favoured	Allowed	Outliers	Percentiles	
1	A	327/368 (89%)	320 (98%)	6 (2%)	1 (0%)	44	40
1	B	327/368 (89%)	313 (96%)	8 (2%)	6 (2%)	10	4
All	All	654/736 (89%)	633 (97%)	14 (2%)	7 (1%)	17	9

5 of 7 Ramachandran outliers are listed below:

Mol	Chain	Res	Type
1	B	121	PRO
1	A	249	THR
1	B	123	GLU
1	B	189	ARG
1	B	190	ASN

5.3.2 Protein sidechains [i](#)

In the following table, the Percentiles column shows the percent sidechain outliers of the chain as a percentile score with respect to all X-ray entries followed by that with respect to entries of similar resolution.

The Analysed column shows the number of residues for which the sidechain conformation was analysed, and the total number of residues.

Mol	Chain	Analysed	Rotameric	Outliers	Percentiles	
1	A	293/322 (91%)	280 (96%)	13 (4%)	33	28
1	B	293/322 (91%)	285 (97%)	8 (3%)	50	51
All	All	586/644 (91%)	565 (96%)	21 (4%)	40	38

5 of 21 residues with a non-rotameric sidechain are listed below:

Mol	Chain	Res	Type
1	A	255	LEU
1	A	288	ILE
1	B	288	ILE
1	A	250	ILE
1	B	289	ASN

Some sidechains can be flipped to improve hydrogen bonding and reduce clashes. 5 of 23 such sidechains are listed below:

Mol	Chain	Res	Type
1	A	361	ASN
1	B	122	ASN
1	B	358	ASN
1	B	18	ASN
1	B	142	GLN

5.3.3 RNA ⓘ

There are no RNA molecules in this entry.

5.4 Non-standard residues in protein, DNA, RNA chains ⓘ

There are no non-standard protein/DNA/RNA residues in this entry.

5.5 Carbohydrates ⓘ

There are no carbohydrates in this entry.

5.6 Ligand geometry

4 ligands are modelled in this entry.

In the following table, the Counts columns list the number of bonds (or angles) for which Mogul statistics could be retrieved, the number of bonds (or angles) that are observed in the model and the number of bonds (or angles) that are defined in the chemical component dictionary. The Link column lists molecule types, if any, to which the group is linked. The Z score for a bond length (or angle) is the number of standard deviations the observed value is removed from the expected value. A bond length (or angle) with $|Z| > 2$ is considered an outlier worth inspection. RMSZ is the root-mean-square of all Z scores of the bond lengths (or angles).

Mol	Type	Chain	Res	Link	Bond lengths			Bond angles		
					Counts	RMSZ	# $ Z > 2$	Counts	RMSZ	# $ Z > 2$
2	ADP	A	501	-	25,29,29	0.91	1 (4%)	24,45,45	1.93	4 (16%)
3	EMQ	A	601	-	37,37,37	1.49	7 (18%)	53,53,53	1.05	3 (5%)
2	ADP	B	502	-	25,29,29	0.97	1 (4%)	24,45,45	1.91	4 (16%)
3	EMQ	B	602	-	37,37,37	1.41	6 (16%)	53,53,53	1.36	8 (15%)

In the following table, the Chirals column lists the number of chiral outliers, the number of chiral centers analysed, the number of these observed in the model and the number defined in the chemical component dictionary. Similar counts are reported in the Torsion and Rings columns. '-' means no outliers of that kind were identified.

Mol	Type	Chain	Res	Link	Chirals	Torsions	Rings
2	ADP	A	501	-	-	0/12/32/32	0/3/3/3
3	EMQ	A	601	-	-	0/21/46/46	0/4/4/4
2	ADP	B	502	-	-	0/12/32/32	0/3/3/3
3	EMQ	B	602	-	-	0/21/46/46	0/4/4/4

The worst 5 of 15 bond length outliers are listed below:

Mol	Chain	Res	Type	Atoms	Z	Observed(Å)	Ideal(Å)
3	A	601	EMQ	F24-C22	2.07	1.40	1.32
3	A	601	EMQ	C13-C14	2.08	1.56	1.51
3	B	602	EMQ	F24-C22	2.09	1.40	1.32
3	B	602	EMQ	C11-C9	2.10	1.55	1.53
3	A	601	EMQ	F25-C22	2.14	1.40	1.32

The worst 5 of 19 bond angle outliers are listed below:

Mol	Chain	Res	Type	Atoms	Z	Observed(°)	Ideal(°)
2	B	502	ADP	N3-C2-N1	-6.65	123.07	128.86
2	A	501	ADP	N3-C2-N1	-6.52	123.18	128.86

Continued on next page...

Continued from previous page...

Mol	Chain	Res	Type	Atoms	Z	Observed(°)	Ideal(°)
3	B	602	EMQ	C2-C5-C6	-3.34	118.92	122.58
3	A	601	EMQ	C14-O15-C10	-3.12	108.84	113.90
3	B	602	EMQ	O29-C27-N28	-2.78	117.56	122.62

There are no chirality outliers.

There are no torsion outliers.

There are no ring outliers.

1 monomer is involved in 1 short contact:

Mol	Chain	Res	Type	Clashes	Symm-Clashes
3	B	602	EMQ	1	0

5.7 Other polymers [i](#)

There are no such residues in this entry.

5.8 Polymer linkage issues [i](#)

There are no chain breaks in this entry.

6 Fit of model and data [i](#)

6.1 Protein, DNA and RNA chains [i](#)

In the following table, the column labelled ‘#RSRZ> 2’ contains the number (and percentage) of RSRZ outliers, followed by percent RSRZ outliers for the chain as percentile scores relative to all X-ray entries and entries of similar resolution. The OWAB column contains the minimum, median, 95th percentile and maximum values of the occupancy-weighted average B-factor per residue. The column labelled ‘Q< 0.9’ lists the number of (and percentage) of residues with an average occupancy less than 0.9.

Mol	Chain	Analysed	<RSRZ>	#RSRZ>2	OWAB(Å ²)	Q<0.9
1	A	331/368 (89%)	0.84	47 (14%) 3 3	19, 36, 62, 68	0
1	B	331/368 (89%)	0.58	35 (10%) 7 7	20, 38, 60, 66	0
All	All	662/736 (89%)	0.71	82 (12%) 4 4	19, 37, 61, 68	0

The worst 5 of 82 RSRZ outliers are listed below:

Mol	Chain	Res	Type	RSRZ
1	A	250	ILE	9.8
1	A	36	SER	9.6
1	B	57	LEU	8.6
1	A	37	ALA	7.2
1	A	58	ALA	7.1

6.2 Non-standard residues in protein, DNA, RNA chains [i](#)

There are no non-standard protein/DNA/RNA residues in this entry.

6.3 Carbohydrates [i](#)

There are no carbohydrates in this entry.

6.4 Ligands [i](#)

In the following table, the Atoms column lists the number of modelled atoms in the group and the number defined in the chemical component dictionary. LLDF column lists the quality of electron density of the group with respect to its neighbouring residues in protein, DNA or RNA chains. The B-factors column lists the minimum, median, 95th percentile and maximum values of B factors of atoms in the group. The column labelled ‘Q< 0.9’ lists the number of atoms with occupancy less than 0.9.

Mol	Type	Chain	Res	Atoms	RSCC	RSR	LLDF	B-factors(\AA^2)	Q<0.9
3	EMQ	B	602	34/34	0.91	0.17	1.54	28,35,65,67	0
3	EMQ	A	601	34/34	0.92	0.18	1.38	25,32,58,59	0
2	ADP	B	502	27/27	0.97	0.16	0.11	25,37,47,48	0
2	ADP	A	501	27/27	0.98	0.14	-0.49	21,27,30,32	0

6.5 Other polymers [i](#)

There are no such residues in this entry.