



# Full wwPDB X-ray Structure Validation Report ⓘ

Nov 9, 2017 – 01:21 AM EST

PDB ID : 4L9I  
Title : Bovine G Protein Coupled Receptor Kinase 1 in Complex with Paroxetine  
Authors : Homan, K.T.; Tesmer, J.J.G.  
Deposited on : unknown  
Resolution : 2.32 Å(reported)

This is a Full wwPDB X-ray Structure Validation Report for a publicly released PDB entry.

We welcome your comments at [validation@mail.wwpdb.org](mailto:validation@mail.wwpdb.org)

A user guide is available at

<http://wwpdb.org/validation/2016/XrayValidationReportHelp>

with specific help available everywhere you see the ⓘ symbol.

---

The following versions of software and data (see [references ⓘ](#)) were used in the production of this report:

MolProbity : 4.02b-467  
Mogul : 1.7.2 (RC1), CSD as538be (2017)  
Xtriage (Phenix) : 1.9-1692  
EDS : rb-20030345  
Percentile statistics : 20161228.v01 (using entries in the PDB archive December 28th 2016)  
Refmac : 5.8.0135  
CCP4 : 6.5.0  
Ideal geometry (proteins) : Engh & Huber (2001)  
Ideal geometry (DNA, RNA) : Parkinson et al. (1996)  
Validation Pipeline (wwPDB-VP) : rb-20030345

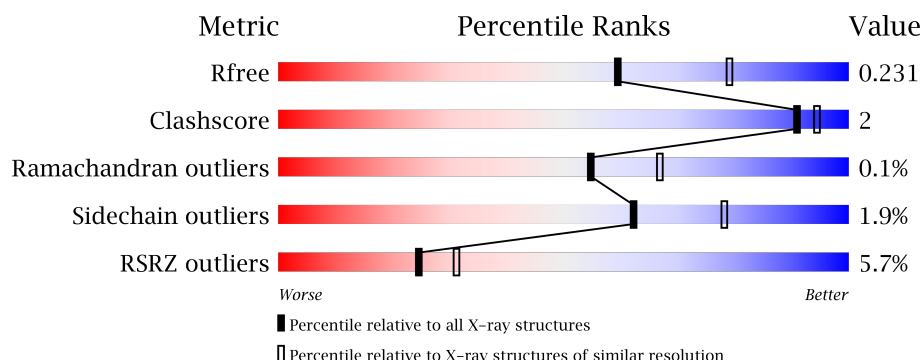
# 1 Overall quality at a glance

The following experimental techniques were used to determine the structure:

*X-RAY DIFFRACTION*

The reported resolution of this entry is 2.32 Å.

Percentile scores (ranging between 0-100) for global validation metrics of the entry are shown in the following graphic. The table shows the number of entries on which the scores are based.



Metric	Whole archive (#Entries)	Similar resolution (#Entries, resolution range(Å))
$R_{free}$	100719	4787 (2.34-2.30)
Clashscore	112137	5439 (2.34-2.30)
Ramachandran outliers	110173	5386 (2.34-2.30)
Sidechain outliers	110143	5385 (2.34-2.30)
RSRZ outliers	101464	4814 (2.34-2.30)

The table below summarises the geometric issues observed across the polymeric chains and their fit to the electron density. The red, orange, yellow and green segments on the lower bar indicate the fraction of residues that contain outliers for  $\geq 3$ , 2, 1 and 0 types of geometric quality criteria. A grey segment represents the fraction of residues that are not modelled. The numeric value for each fraction is indicated below the corresponding segment, with a dot representing fractions  $\leq 5\%$ . The upper red bar (where present) indicates the fraction of residues that have poor fit to the electron density. The numeric value is given above the bar.

Mol	Chain	Length	Quality of chain
1	A	504	<div> <div>4%</div> <div>93%</div> <div>7%</div> </div>
1	B	504	<div> <div>8%</div> <div>92%</div> <div>5%</div> <div>•</div> </div>

## 2 Entry composition [i](#)

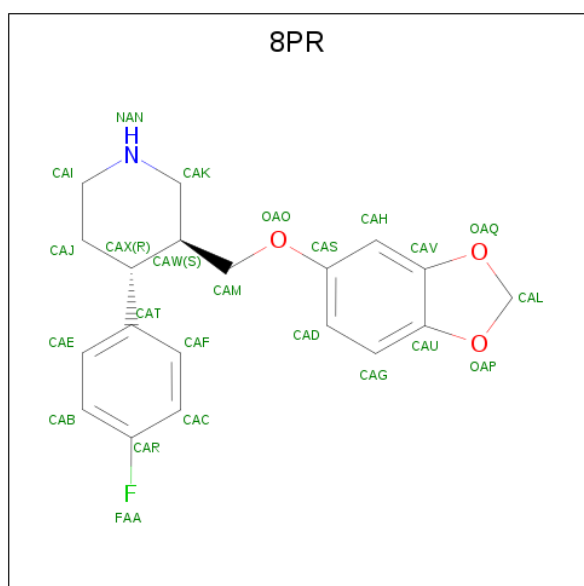
There are 5 unique types of molecules in this entry. The entry contains 8480 atoms, of which 0 are hydrogens and 0 are deuteriums.

In the tables below, the ZeroOcc column contains the number of atoms modelled with zero occupancy, the AltConf column contains the number of residues with at least one atom in alternate conformation and the Trace column contains the number of residues modelled with at most 2 atoms.

- Molecule 1 is a protein called Rhodopsin kinase.

Mol	Chain	Residues	Atoms					ZeroOcc	AltConf	Trace
1	A	504	Total	C	N	O	S	0	0	0
			4040	2591	697	733	19			
1	B	493	Total	C	N	O	S	0	1	0
			3969	2547	686	717	19			

- Molecule 2 is Paroxetine (three-letter code: 8PR) (formula: C<sub>19</sub>H<sub>20</sub>FNO<sub>3</sub>).



Mol	Chain	Residues	Atoms					ZeroOcc	AltConf
2	A	1	Total	C	F	N	O	0	0
			24	19	1	1	3		
2	B	1	Total	C	F	N	O	0	0
			24	19	1	1	3		

- Molecule 3 is 2-(N-MORPHOLINO)-ETHANESULFONIC ACID (three-letter code: MES) (formula: C<sub>6</sub>H<sub>13</sub>NO<sub>4</sub>S).



Mol	Chain	Residues	Atoms					ZeroOcc	AltConf
3	A	1	Total	C	N	O	S	0	0
			12	6	1	4	1		

- Molecule 4 is CHLORIDE ION (three-letter code: CL) (formula: Cl).

Mol	Chain	Residues	Atoms		ZeroOcc	AltConf
4	B	2	Total	Cl	0	0
			2	2		

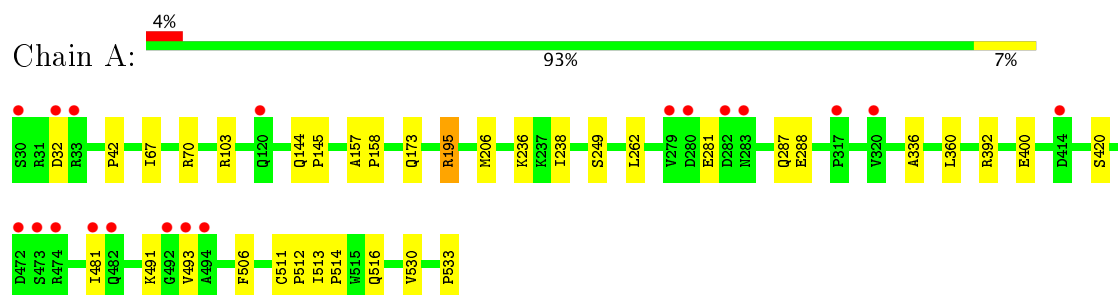
- Molecule 5 is water.

Mol	Chain	Residues	Atoms		ZeroOcc	AltConf
5	A	235	Total	O	0	0
			235	235		
5	B	174	Total	O	0	0
			174	174		

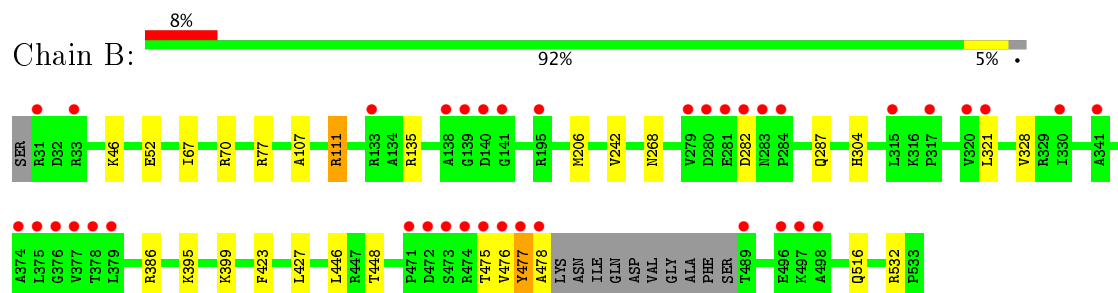
### 3 Residue-property plots [i](#)

These plots are drawn for all protein, RNA and DNA chains in the entry. The first graphic for a chain summarises the proportions of the various outlier classes displayed in the second graphic. The second graphic shows the sequence view annotated by issues in geometry and electron density. Residues are color-coded according to the number of geometric quality criteria for which they contain at least one outlier: green = 0, yellow = 1, orange = 2 and red = 3 or more. A red dot above a residue indicates a poor fit to the electron density ( $\text{RSRZ} > 2$ ). Stretches of 2 or more consecutive residues without any outlier are shown as a green connector. Residues present in the sample, but not in the model, are shown in grey.

#### • Molecule 1: Rhodopsin kinase



#### • Molecule 1: Rhodopsin kinase



## 4 Data and refinement statistics

Property	Value	Source
Space group	P 21 21 21	Depositor
Cell constants a, b, c, $\alpha$ , $\beta$ , $\gamma$	66.79Å 122.09Å 152.89Å 90.00° 90.00° 90.00°	Depositor
Resolution (Å)	29.93 – 2.32 29.93 – 2.32	Depositor EDS
% Data completeness (in resolution range)	99.9 (29.93-2.32) 100.0 (29.93-2.32)	Depositor EDS
$R_{merge}$	0.11	Depositor
$R_{sym}$	(Not available)	Depositor
$\langle I/\sigma(I) \rangle$ <sup>1</sup>	2.85 (at 2.31Å)	Xtriage
Refinement program	REFMAC 5.7.0032	Depositor
R, $R_{free}$	0.186 , 0.231 0.191 , 0.231	Depositor DCC
$R_{free}$ test set	2774 reflections (5.34%)	DCC
Wilson B-factor (Å <sup>2</sup> )	38.8	Xtriage
Anisotropy	0.033	Xtriage
Bulk solvent $k_{sol}$ (e/Å <sup>3</sup> ), $B_{sol}$ (Å <sup>2</sup> )	0.33 , 37.5	EDS
L-test for twinning <sup>2</sup>	$\langle  L  \rangle = 0.49$ , $\langle L^2 \rangle = 0.33$	Xtriage
Estimated twinning fraction	No twinning to report.	Xtriage
$F_o, F_c$ correlation	0.95	EDS
Total number of atoms	8480	wwPDB-VP
Average B, all atoms (Å <sup>2</sup> )	46.0	wwPDB-VP

Xtriage's analysis on translational NCS is as follows: *The largest off-origin peak in the Patterson function is 3.63% of the height of the origin peak. No significant pseudotranslation is detected.*

<sup>1</sup>Intensities estimated from amplitudes.

<sup>2</sup>Theoretical values of  $\langle |L| \rangle$ ,  $\langle L^2 \rangle$  for acentric reflections are 0.5, 0.333 respectively for untwinned datasets, and 0.375, 0.2 for perfectly twinned datasets.

## 5 Model quality [i](#)

### 5.1 Standard geometry [i](#)

Bond lengths and bond angles in the following residue types are not validated in this section: 8PR, MES, CL

The Z score for a bond length (or angle) is the number of standard deviations the observed value is removed from the expected value. A bond length (or angle) with  $|Z| > 5$  is considered an outlier worth inspection. RMSZ is the root-mean-square of all Z scores of the bond lengths (or angles).

Mol	Chain	Bond lengths		Bond angles	
		RMSZ	$\# Z  > 5$	RMSZ	$\# Z  > 5$
1	A	0.52	0/4136	0.69	1/5581 (0.0%)
1	B	0.51	0/4064	0.68	2/5483 (0.0%)
All	All	0.51	0/8200	0.68	3/11064 (0.0%)

There are no bond length outliers.

All (3) bond angle outliers are listed below:

Mol	Chain	Res	Type	Atoms	Z	Observed(°)	Ideal(°)
1	B	111	ARG	NE-CZ-NH1	5.69	123.15	120.30
1	A	103	ARG	NE-CZ-NH2	-5.30	117.65	120.30
1	B	111	ARG	NE-CZ-NH2	-5.22	117.69	120.30

There are no chirality outliers.

There are no planarity outliers.

### 5.2 Too-close contacts [i](#)

In the following table, the Non-H and H(model) columns list the number of non-hydrogen atoms and hydrogen atoms in the chain respectively. The H(added) column lists the number of hydrogen atoms added and optimized by MolProbity. The Clashes column lists the number of clashes within the asymmetric unit, whereas Symm-Clashes lists symmetry related clashes.

Mol	Chain	Non-H	H(model)	H(added)	Clashes	Symm-Clashes
1	A	4040	0	4008	17	0
1	B	3969	0	3935	16	0
2	A	24	0	20	0	0
2	B	24	0	20	0	0
3	A	12	0	13	0	0
4	B	2	0	0	0	0

*Continued on next page...*

*Continued from previous page...*

Mol	Chain	Non-H	H(model)	H(added)	Clashes	Symm-Clashes
5	A	235	0	0	3	0
5	B	174	0	0	3	0
All	All	8480	0	7996	32	0

The all-atom clashscore is defined as the number of clashes found per 1000 atoms (including hydrogen atoms). The all-atom clashscore for this structure is 2.

All (32) close contacts within the same asymmetric unit are listed below, sorted by their clash magnitude.

Atom-1	Atom-2	Interatomic distance (Å)	Clash overlap (Å)
1:A:67:ILE:HD12	1:A:516:GLN:HG2	1.78	0.64
1:A:70:ARG:NH1	5:A:765:HOH:O	2.31	0.62
1:A:360:LEU:C	1:A:360:LEU:HD23	2.26	0.56
1:B:386:ARG:CZ	5:B:860:HOH:O	2.55	0.53
1:B:67:ILE:HD12	1:B:516:GLN:HG2	1.91	0.53
1:A:262:LEU:HD21	1:A:506:PHE:CZ	2.45	0.52
1:A:533:PRO:HG2	1:B:77:ARG:HG3	1.92	0.51
1:A:238:ILE:HD13	1:A:336:ALA:HB3	1.92	0.51
1:B:423:PHE:CE2	1:B:427:LEU:HD11	2.46	0.50
1:B:242:VAL:HG13	1:B:304:HIS:CD2	2.47	0.50
1:A:144:GLN:HB2	1:A:145:PRO:HD3	1.94	0.50
1:B:107:ALA:O	1:B:111:ARG:HG3	2.12	0.50
1:B:386:ARG:NE	5:B:860:HOH:O	2.45	0.49
1:A:493:VAL:O	1:A:493:VAL:HG23	2.13	0.48
1:A:392:ARG:NH1	5:A:861:HOH:O	2.48	0.47
1:B:476:VAL:O	1:B:478:ALA:N	2.48	0.47
1:A:288:GLU:CD	1:A:420:SER:OG	2.53	0.46
1:A:287:GLN:HB2	5:A:864:HOH:O	2.15	0.46
1:B:111:ARG:HD2	1:B:135:ARG:HA	1.98	0.45
1:B:446:LEU:C	1:B:446:LEU:HD23	2.39	0.43
1:A:157:ALA:N	1:A:158:PRO:CD	2.81	0.43
1:B:321:LEU:O	1:B:328:VAL:HA	2.19	0.43
1:B:46:LYS:NZ	5:B:758:HOH:O	2.51	0.43
1:A:195:ARG:HH12	1:A:481:ILE:HG22	1.83	0.42
1:A:42:PRO:HD2	1:A:173:GLN:HB3	2.02	0.41
1:A:32:ASP:OD1	1:A:32:ASP:C	2.59	0.41
1:A:513:ILE:HB	1:A:514:PRO:HD3	2.01	0.41
1:B:532:ARG:CG	1:B:532:ARG:O	2.68	0.41
1:B:287:GLN:HE21	1:B:287:GLN:HA	1.84	0.41
1:B:242:VAL:HG13	1:B:304:HIS:HD2	1.86	0.41
1:A:511:CYS:HA	1:A:512:PRO:HD3	1.93	0.40

*Continued on next page...*



*Continued from previous page...*

Atom-1	Atom-2	Interatomic distance (Å)	Clash overlap (Å)
1:B:475:THR:HG21	1:B:477:TYR:CE1	2.57	0.40

There are no symmetry-related clashes.

## 5.3 Torsion angles [i](#)

### 5.3.1 Protein backbone [i](#)

In the following table, the Percentiles column shows the percent Ramachandran outliers of the chain as a percentile score with respect to all X-ray entries followed by that with respect to entries of similar resolution.

The Analysed column shows the number of residues for which the backbone conformation was analysed, and the total number of residues.

Mol	Chain	Analysed	Favoured	Allowed	Outliers	Percentiles	
1	A	502/504 (100%)	484 (96%)	18 (4%)	0	100	100
1	B	490/504 (97%)	476 (97%)	13 (3%)	1 (0%)	51	62
All	All	992/1008 (98%)	960 (97%)	31 (3%)	1 (0%)	55	67

All (1) Ramachandran outliers are listed below:

Mol	Chain	Res	Type
1	B	477	TYR

### 5.3.2 Protein sidechains [i](#)

In the following table, the Percentiles column shows the percent sidechain outliers of the chain as a percentile score with respect to all X-ray entries followed by that with respect to entries of similar resolution.

The Analysed column shows the number of residues for which the sidechain conformation was analysed, and the total number of residues.

Mol	Chain	Analysed	Rotameric	Outliers	Percentiles	
1	A	420/420 (100%)	412 (98%)	8 (2%)	62	78
1	B	412/420 (98%)	404 (98%)	8 (2%)	62	78
All	All	832/840 (99%)	816 (98%)	16 (2%)	62	78

All (16) residues with a non-rotameric sidechain are listed below:

Mol	Chain	Res	Type
1	A	195	ARG
1	A	206	MET
1	A	236	LYS
1	A	249	SER
1	A	281	GLU
1	A	400	GLU
1	A	491	LYS
1	A	530	VAL
1	B	52	GLU
1	B	70	ARG
1	B	206	MET
1	B	268	ASN
1	B	282	ASP
1	B	395	LYS
1	B	399	LYS
1	B	448	THR

Some sidechains can be flipped to improve hydrogen bonding and reduce clashes. All (5) such sidechains are listed below:

Mol	Chain	Res	Type
1	A	120	GLN
1	A	504	GLN
1	B	87	GLN
1	B	287	GLN
1	B	304	HIS

### 5.3.3 RNA [i](#)

There are no RNA molecules in this entry.

## 5.4 Non-standard residues in protein, DNA, RNA chains [i](#)

There are no non-standard protein/DNA/RNA residues in this entry.

## 5.5 Carbohydrates [i](#)

There are no carbohydrates in this entry.

## 5.6 Ligand geometry

Of 5 ligands modelled in this entry, 2 are monoatomic - leaving 3 for Mogul analysis.

In the following table, the Counts columns list the number of bonds (or angles) for which Mogul statistics could be retrieved, the number of bonds (or angles) that are observed in the model and the number of bonds (or angles) that are defined in the Chemical Component Dictionary. The Link column lists molecule types, if any, to which the group is linked. The Z score for a bond length (or angle) is the number of standard deviations the observed value is removed from the expected value. A bond length (or angle) with  $|Z| > 2$  is considered an outlier worth inspection. RMSZ is the root-mean-square of all Z scores of the bond lengths (or angles).

Mol	Type	Chain	Res	Link	Bond lengths			Bond angles		
					Counts	RMSZ	# Z  > 2	Counts	RMSZ	# Z  > 2
2	8PR	A	601	-	26,27,27	0.79	0	34,37,37	1.62	6 (17%)
3	MES	A	602	-	12,12,12	1.83	1 (8%)	14,16,16	1.15	2 (14%)
2	8PR	B	601	-	26,27,27	0.88	1 (3%)	34,37,37	1.68	5 (14%)

In the following table, the Chirals column lists the number of chiral outliers, the number of chiral centers analysed, the number of these observed in the model and the number defined in the Chemical Component Dictionary. Similar counts are reported in the Torsion and Rings columns. '-' means no outliers of that kind were identified.

Mol	Type	Chain	Res	Link	Chirals	Torsions	Rings
2	8PR	A	601	-	-	0/9/26/26	0/4/4/4
3	MES	A	602	-	-	0/6/14/14	0/1/1/1
2	8PR	B	601	-	-	0/9/26/26	0/4/4/4

All (2) bond length outliers are listed below:

Mol	Chain	Res	Type	Atoms	Z	Observed(Å)	Ideal(Å)
3	A	602	MES	C8-S	-5.92	1.68	1.77
2	B	601	8PR	OAQ-CAV	-2.21	1.35	1.38

All (13) bond angle outliers are listed below:

Mol	Chain	Res	Type	Atoms	Z	Observed(°)	Ideal(°)
2	A	601	8PR	CAC-CAR-CAB	-2.99	118.69	122.86
2	B	601	8PR	CAI-CAJ-CAX	-2.44	109.39	111.40
2	B	601	8PR	CAC-CAR-CAB	-2.44	119.47	122.86
2	B	601	8PR	OAP-CAL-OAQ	-2.41	104.34	108.10
3	A	602	MES	O1-C2-C3	-2.40	106.46	111.83
2	A	601	8PR	OAP-CAL-OAQ	-2.12	104.79	108.10
3	A	602	MES	O3S-S-C8	-2.11	103.46	106.06

*Continued on next page...*

*Continued from previous page...*

Mol	Chain	Res	Type	Atoms	Z	Observed(°)	Ideal(°)
2	A	601	8PR	CAM-OAO-CAS	2.08	122.42	117.89
2	A	601	8PR	CAL-OAQ-CAV	2.26	108.37	105.35
2	A	601	8PR	CAE-CAB-CAR	2.62	121.11	118.35
2	B	601	8PR	CAL-OAQ-CAV	2.83	109.13	105.35
2	A	601	8PR	CAK-NAN-CAI	6.08	120.64	111.69
2	B	601	8PR	CAK-NAN-CAI	6.61	121.41	111.69

There are no chirality outliers.

There are no torsion outliers.

There are no ring outliers.

No monomer is involved in short contacts.

## 5.7 Other polymers [i](#)

There are no such residues in this entry.

## 5.8 Polymer linkage issues [i](#)

There are no chain breaks in this entry.

## 6 Fit of model and data ⓘ

### 6.1 Protein, DNA and RNA chains ⓘ

In the following table, the column labelled ‘#RSRZ> 2’ contains the number (and percentage) of RSRZ outliers, followed by percent RSRZ outliers for the chain as percentile scores relative to all X-ray entries and entries of similar resolution. The OWAB column contains the minimum, median, 95<sup>th</sup> percentile and maximum values of the occupancy-weighted average B-factor per residue. The column labelled ‘Q< 0.9’ lists the number of (and percentage) of residues with an average occupancy less than 0.9.

Mol	Chain	Analysed	<RSRZ>	#RSRZ>2		OWAB(Å <sup>2</sup> )	Q<0.9
1	A	504/504 (100%)	0.03	19 (3%)	41 48	24, 41, 73, 106	0
1	B	493/504 (97%)	0.15	38 (7%)	14 19	26, 44, 77, 117	0
All	All	997/1008 (98%)	0.09	57 (5%)	24 31	24, 43, 76, 117	0

All (57) RSRZ outliers are listed below:

Mol	Chain	Res	Type	RSRZ
1	B	474	ARG	6.3
1	A	482	GLN	5.8
1	B	472	ASP	5.2
1	A	282	ASP	5.2
1	A	481	ILE	4.8
1	B	282	ASP	4.7
1	A	492	GLY	4.5
1	B	473	SER	4.5
1	A	474	ARG	4.2
1	B	375	LEU	4.2
1	B	33	ARG	4.1
1	B	279	VAL	3.9
1	A	30	SER	3.8
1	B	475	THR	3.6
1	B	281	GLU	3.5
1	A	283	ASN	3.5
1	A	472	ASP	3.3
1	B	315	LEU	3.2
1	B	477	TYR	3.2
1	A	493	VAL	3.2
1	A	320	VAL	3.0
1	B	497	LYS	3.0
1	B	320	VAL	3.0
1	B	376	GLY	2.9

*Continued on next page...*

*Continued from previous page...*

Mol	Chain	Res	Type	RSRZ
1	B	139	GLY	2.9
1	B	283	ASN	2.9
1	A	33	ARG	2.8
1	B	317	PRO	2.8
1	A	279	VAL	2.8
1	B	378	THR	2.7
1	B	476	VAL	2.6
1	B	140	ASP	2.6
1	B	471	PRO	2.6
1	B	374	ALA	2.6
1	A	280	ASP	2.5
1	B	138	ALA	2.5
1	A	473	SER	2.5
1	B	141	GLY	2.4
1	B	379	LEU	2.4
1	B	496	GLU	2.4
1	A	32	ASP	2.3
1	B	280	ASP	2.3
1	B	377	VAL	2.3
1	B	133	ARG	2.3
1	B	321	LEU	2.2
1	B	195	ARG	2.2
1	B	341	ALA	2.2
1	A	120	GLN	2.2
1	B	478	ALA	2.2
1	A	414	ASP	2.1
1	B	284	PRO	2.1
1	B	498	ALA	2.1
1	A	494	ALA	2.1
1	B	31	ARG	2.0
1	B	489	THR	2.0
1	A	317	PRO	2.0
1	B	330	ILE	2.0

## 6.2 Non-standard residues in protein, DNA, RNA chains ⓘ

There are no non-standard protein/DNA/RNA residues in this entry.

## 6.3 Carbohydrates ⓘ

There are no carbohydrates in this entry.

## 6.4 Ligands [i](#)

In the following table, the Atoms column lists the number of modelled atoms in the group and the number defined in the chemical component dictionary. LLDF column lists the quality of electron density of the group with respect to its neighbouring residues in protein, DNA or RNA chains. The B-factors column lists the minimum, median, 95<sup>th</sup> percentile and maximum values of B factors of atoms in the group. The column labelled 'Q< 0.9' lists the number of atoms with occupancy less than 0.9.

Mol	Type	Chain	Res	Atoms	RSCC	RSR	LLDF	B-factors( $\text{\AA}^2$ )	Q<0.9
2	8PR	B	601	24/24	0.94	0.21	0.57	35,55,60,62	0
2	8PR	A	601	24/24	0.93	0.18	0.20	44,52,56,57	0
3	MES	A	602	12/12	0.98	0.08	-1.52	31,35,38,38	0
4	CL	B	603	1/1	0.99	0.09	-	31,31,31,31	0
4	CL	B	602	1/1	0.98	0.11	-	49,49,49,49	0

## 6.5 Other polymers [i](#)

There are no such residues in this entry.