



Full wwPDB X-ray Structure Validation Report ⓘ

Feb 14, 2017 – 10:06 am GMT

PDB ID : 3LC4
Title : Human Cytochrome P450 2E1 in Complex with Omega-Imidazolyl-Dodecanoic Acid
Authors : Scott, E.E.; Porubsky, P.R.
Deposited on : 2010-01-09
Resolution : 3.10 Å(reported)

This is a Full wwPDB X-ray Structure Validation Report for a publicly released PDB entry.

We welcome your comments at validation@mail.wwpdb.org

A user guide is available at

<http://wwpdb.org/validation/2016/XrayValidationReportHelp>

with specific help available everywhere you see the ⓘ symbol.

The following versions of software and data (see [references ⓘ](#)) were used in the production of this report:

MolProbity : 4.02b-467
Mogul : 1.7.2 (RC1), CSD as538be (2017)
Xtriage (Phenix) : 1.9-1692
EDS : trunk28620
Percentile statistics : 20161228.v01 (using entries in the PDB archive December 28th 2016)
Refmac : 5.8.0135
CCP4 : 6.5.0
Ideal geometry (proteins) : Engh & Huber (2001)
Ideal geometry (DNA, RNA) : Parkinson et al. (1996)
Validation Pipeline (wwPDB-VP) : recalc28949

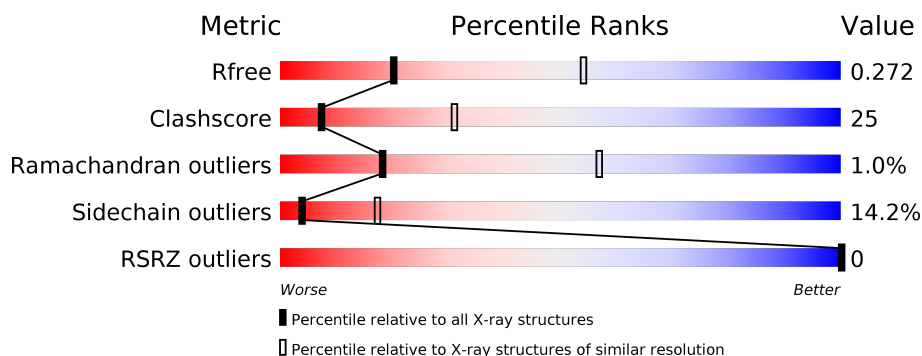
1 Overall quality at a glance

The following experimental techniques were used to determine the structure:

X-RAY DIFFRACTION

The reported resolution of this entry is 3.10 Å.

Percentile scores (ranging between 0-100) for global validation metrics of the entry are shown in the following graphic. The table shows the number of entries on which the scores are based.



Metric	Whole archive (#Entries)	Similar resolution (#Entries, resolution range(Å))
R_{free}	100719	1001 (3.12-3.08)
Clashscore	112137	1099 (3.12-3.08)
Ramachandran outliers	110173	1057 (3.12-3.08)
Sidechain outliers	110143	1057 (3.12-3.08)
RSRZ outliers	101464	1006 (3.12-3.08)

The table below summarises the geometric issues observed across the polymeric chains and their fit to the electron density. The red, orange, yellow and green segments on the lower bar indicate the fraction of residues that contain outliers for ≥ 3 , 2, 1 and 0 types of geometric quality criteria. A grey segment represents the fraction of residues that are not modelled. The numeric value for each fraction is indicated below the corresponding segment, with a dot representing fractions $\leq 5\%$. The upper red bar (where present) indicates the fraction of residues that have poor fit to the electron density. The numeric value is given above the bar.

Mol	Chain	Length	Quality of chain
1	A	476	
1	B	476	

The following table lists non-polymeric compounds, carbohydrate monomers and non-standard residues in protein, DNA, RNA chains that are outliers for geometric or electron-density-fit criteria:

Mol	Type	Chain	Res	Chirality	Geometry	Clashes	Electron density
3	LC4	B	501	-	-	X	-

2 Entry composition

There are 4 unique types of molecules in this entry. The entry contains 7631 atoms, of which 0 are hydrogens and 0 are deuteriums.

In the tables below, the ZeroOcc column contains the number of atoms modelled with zero occupancy, the AltConf column contains the number of residues with at least one atom in alternate conformation and the Trace column contains the number of residues modelled with at most 2 atoms.

- Molecule 1 is a protein called Cytochrome P450 2E1.

Mol	Chain	Residues	Atoms					ZeroOcc	AltConf	Trace
1	A	460	Total	C	N	O	S	0	0	0
			3755	2431	643	663	18			
1	B	459	Total	C	N	O	S	0	0	0
			3747	2426	642	662	17			

There are 28 discrepancies between the modelled and reference sequences:

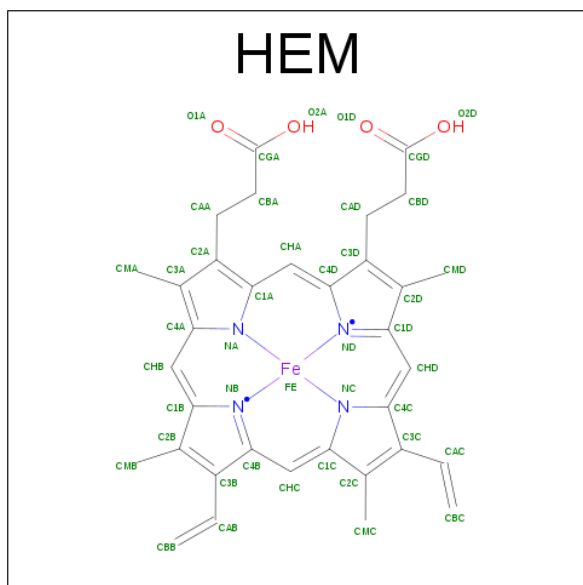
Chain	Residue	Modelled	Actual	Comment	Reference
A	22	MET	-	EXPRESSION TAG	UNP P05181
A	23	ALA	-	EXPRESSION TAG	UNP P05181
A	24	LYS	-	EXPRESSION TAG	UNP P05181
A	25	LYS	-	EXPRESSION TAG	UNP P05181
A	26	THR	-	EXPRESSION TAG	UNP P05181
A	27	SER	-	EXPRESSION TAG	UNP P05181
A	28	SER	-	EXPRESSION TAG	UNP P05181
A	29	LYS	-	EXPRESSION TAG	UNP P05181
A	30	GLY	-	EXPRESSION TAG	UNP P05181
A	31	LYS	-	EXPRESSION TAG	UNP P05181
A	494	HIS	-	EXPRESSION TAG	UNP P05181
A	495	HIS	-	EXPRESSION TAG	UNP P05181
A	496	HIS	-	EXPRESSION TAG	UNP P05181
A	497	HIS	-	EXPRESSION TAG	UNP P05181
B	22	MET	-	EXPRESSION TAG	UNP P05181
B	23	ALA	-	EXPRESSION TAG	UNP P05181
B	24	LYS	-	EXPRESSION TAG	UNP P05181
B	25	LYS	-	EXPRESSION TAG	UNP P05181
B	26	THR	-	EXPRESSION TAG	UNP P05181
B	27	SER	-	EXPRESSION TAG	UNP P05181
B	28	SER	-	EXPRESSION TAG	UNP P05181
B	29	LYS	-	EXPRESSION TAG	UNP P05181
B	30	GLY	-	EXPRESSION TAG	UNP P05181
B	31	LYS	-	EXPRESSION TAG	UNP P05181
B	494	HIS	-	EXPRESSION TAG	UNP P05181

Continued on next page...

Continued from previous page...

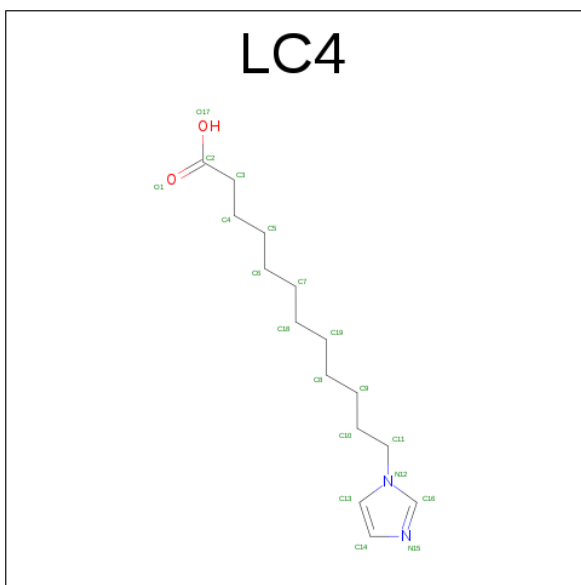
Chain	Residue	Modelled	Actual	Comment	Reference
B	495	HIS	-	EXPRESSION TAG	UNP P05181
B	496	HIS	-	EXPRESSION TAG	UNP P05181
B	497	HIS	-	EXPRESSION TAG	UNP P05181

- Molecule 2 is PROTOPORPHYRIN IX CONTAINING FE (three-letter code: HEM) (formula: $C_{34}H_{32}FeN_4O_4$).



Mol	Chain	Residues	Atoms					ZeroOcc	AltConf
2	A	1	Total	C	Fe	N	O	0	0
			43	34	1	4	4		
2	B	1	Total	C	Fe	N	O	0	0
			43	34	1	4	4		

- Molecule 3 is 12-(1H-IMIDAZOL-1-YL)DODECANOIC ACID (three-letter code: LC4) (formula: $C_{15}H_{26}N_2O_2$).



Mol	Chain	Residues	Atoms				ZeroOcc	AltConf
3	A	1	Total	C	N	O	0	0
			19	15	2	2		
3	B	1	Total	C	N	O	0	0
			19	15	2	2		

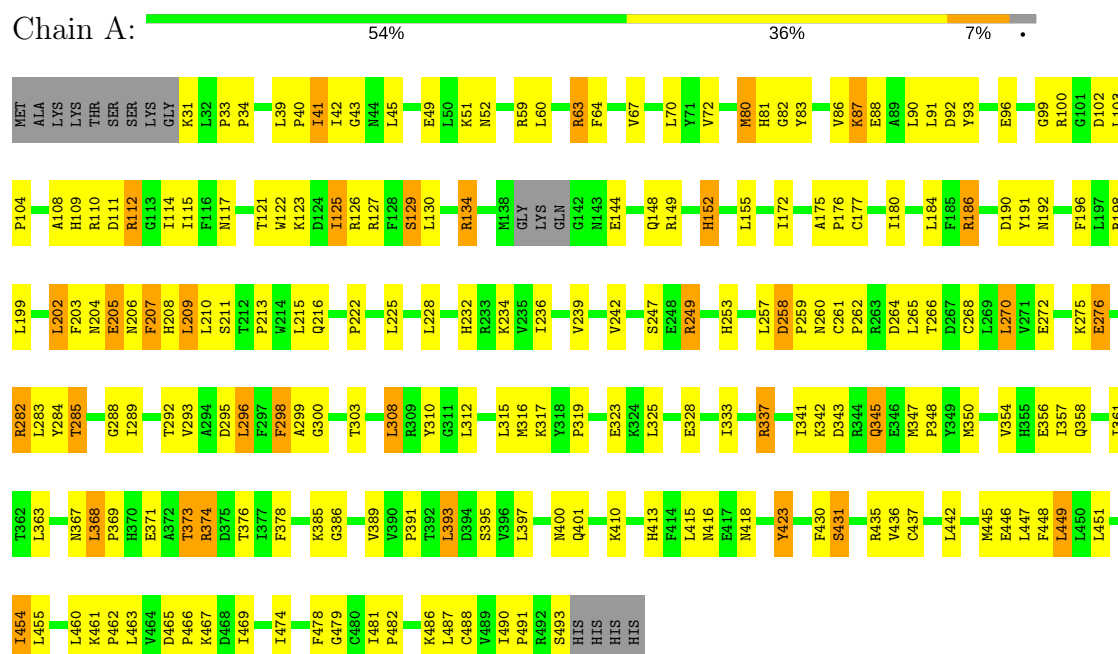
- Molecule 4 is water.

Mol	Chain	Residues	Atoms		ZeroOcc	AltConf
4	A	2	Total	O	0	0
			2	2		
4	B	3	Total	O	0	0
			3	3		

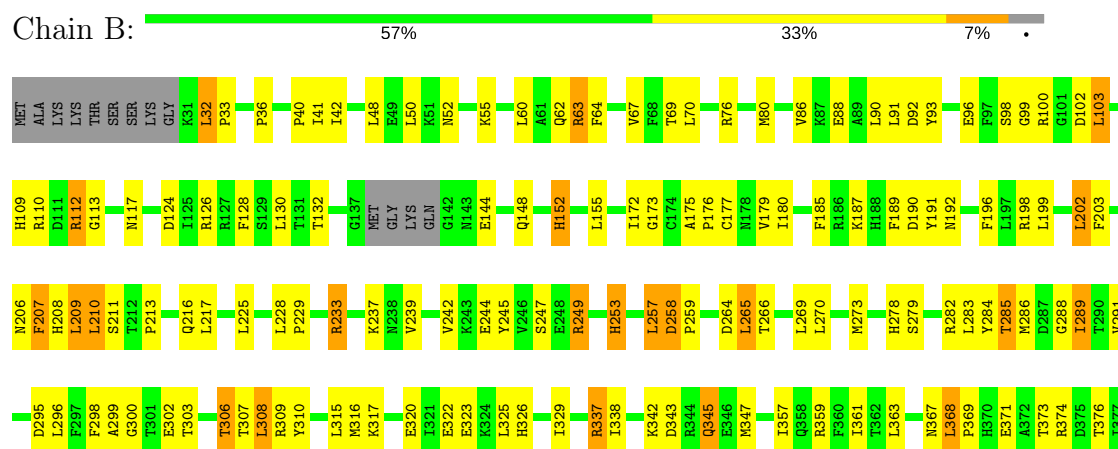
3 Residue-property plots

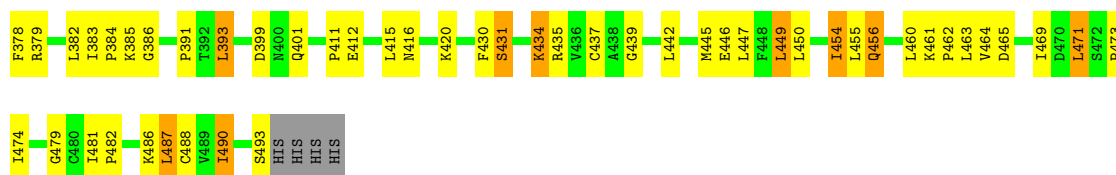
These plots are drawn for all protein, RNA and DNA chains in the entry. The first graphic for a chain summarises the proportions of the various outlier classes displayed in the second graphic. The second graphic shows the sequence view annotated by issues in geometry and electron density. Residues are color-coded according to the number of geometric quality criteria for which they contain at least one outlier: green = 0, yellow = 1, orange = 2 and red = 3 or more. A red dot above a residue indicates a poor fit to the electron density ($RSRZ > 2$). Stretches of 2 or more consecutive residues without any outlier are shown as a green connector. Residues present in the sample, but not in the model, are shown in grey.

• Molecule 1: Cytochrome P450 2E1



• Molecule 1: Cytochrome P450 2E1





4 Data and refinement statistics

Property	Value	Source
Space group	P 43	Depositor
Cell constants a, b, c, α , β , γ	70.78Å 70.78Å 224.63Å 90.00° 90.00° 90.00°	Depositor
Resolution (Å)	37.93 – 3.10 37.93 – 3.10	Depositor EDS
% Data completeness (in resolution range)	99.8 (37.93-3.10) 99.7 (37.93-3.10)	Depositor EDS
R_{merge}	(Not available)	Depositor
R_{sym}	0.19	Depositor
$\langle I/\sigma(I) \rangle$ ¹	4.29 (at 3.12Å)	Xtriage
Refinement program	REFMAC 5.5.0102	Depositor
R, R_{free}	0.198 , 0.270 0.199 , 0.272	Depositor DCC
R_{free} test set	1018 reflections (5.40%)	DCC
Wilson B-factor (Å ²)	52.7	Xtriage
Anisotropy	0.182	Xtriage
Bulk solvent k_{sol} (e/Å ³), B_{sol} (Å ²)	0.33 , 8.6	EDS
L-test for twinning ²	$\langle L \rangle = 0.46$, $\langle L^2 \rangle = 0.29$	Xtriage
Estimated twinning fraction	0.460 for h,-k,-l	Xtriage
F_o, F_c correlation	0.92	EDS
Total number of atoms	7631	wwPDB-VP
Average B, all atoms (Å ²)	46.0	wwPDB-VP

Xtriage's analysis on translational NCS is as follows: *The largest off-origin peak in the Patterson function is 3.83% of the height of the origin peak. No significant pseudotranslation is detected.*

¹Intensities estimated from amplitudes.

²Theoretical values of $\langle |L| \rangle$, $\langle L^2 \rangle$ for acentric reflections are 0.5, 0.333 respectively for untwinned datasets, and 0.375, 0.2 for perfectly twinned datasets.

5 Model quality

5.1 Standard geometry

Bond lengths and bond angles in the following residue types are not validated in this section: HEM, LC4

The Z score for a bond length (or angle) is the number of standard deviations the observed value is removed from the expected value. A bond length (or angle) with $|Z| > 5$ is considered an outlier worth inspection. RMSZ is the root-mean-square of all Z scores of the bond lengths (or angles).

Mol	Chain	Bond lengths		Bond angles	
		RMSZ	$\# Z > 5$	RMSZ	$\# Z > 5$
1	A	0.70	1/3859 (0.0%)	0.75	0/5226
1	B	0.70	0/3851	0.76	0/5216
All	All	0.70	1/7710 (0.0%)	0.75	0/10442

All (1) bond length outliers are listed below:

Mol	Chain	Res	Type	Atoms	Z	Observed(Å)	Ideal(Å)
1	A	400	ASN	CG-OD1	5.19	1.35	1.24

There are no bond angle outliers.

There are no chirality outliers.

There are no planarity outliers.

5.2 Too-close contacts

In the following table, the Non-H and H(model) columns list the number of non-hydrogen atoms and hydrogen atoms in the chain respectively. The H(added) column lists the number of hydrogen atoms added and optimized by MolProbity. The Clashes column lists the number of clashes within the asymmetric unit, whereas Symm-Clashes lists symmetry related clashes.

Mol	Chain	Non-H	H(model)	H(added)	Clashes	Symm-Clashes
1	A	3755	0	3756	189	0
1	B	3747	0	3747	181	0
2	A	43	0	30	11	0
2	B	43	0	30	11	0
3	A	19	0	25	8	0
3	B	19	0	25	9	0
4	A	2	0	0	0	0
4	B	3	0	0	0	0

Continued on next page...

Continued from previous page...

Mol	Chain	Non-H	H(model)	H(added)	Clashes	Symm-Clashes
All	All	7631	0	7613	378	0

The all-atom clashscore is defined as the number of clashes found per 1000 atoms (including hydrogen atoms). The all-atom clashscore for this structure is 25.

All (378) close contacts within the same asymmetric unit are listed below, sorted by their clash magnitude.

Atom-1	Atom-2	Interatomic distance (Å)	Clash overlap (Å)
1:B:98:SER:HA	1:B:434:LYS:CE	1.37	1.51
1:B:98:SER:CA	1:B:434:LYS:HE2	1.60	1.30
1:B:98:SER:HA	1:B:434:LYS:NZ	1.51	1.26
1:A:40:PRO:O	1:A:41:ILE:HG12	1.43	1.15
1:A:310:TYR:HE1	1:A:482:PRO:HD3	1.14	1.08
1:B:229:PRO:HA	1:B:233:ARG:NH1	1.70	1.06
1:A:112:ARG:HG3	1:A:112:ARG:HH11	1.21	1.03
1:B:229:PRO:HA	1:B:233:ARG:HH12	1.15	1.02
1:B:229:PRO:CA	1:B:233:ARG:HH12	1.74	1.01
1:A:41:ILE:HG12	1:A:42:ILE:H	1.25	1.00
1:B:310:TYR:HE1	1:B:482:PRO:HD3	1.25	1.00
1:B:98:SER:CA	1:B:434:LYS:CE	2.28	0.98
1:B:343:ASP:HB3	1:B:347:MET:HE2	1.45	0.98
1:A:42:ILE:HG13	1:A:43:GLY:N	1.74	0.97
1:B:98:SER:HA	1:B:434:LYS:HE2	0.98	0.95
1:A:310:TYR:CE1	1:A:482:PRO:HD3	2.01	0.95
1:A:83:TYR:CZ	1:A:87:LYS:NZ	2.35	0.94
1:A:134:ARG:HH21	1:A:134:ARG:HB2	1.30	0.94
1:A:41:ILE:CG1	1:A:42:ILE:H	1.80	0.93
1:B:98:SER:CA	1:B:434:LYS:NZ	2.33	0.92
1:A:282:ARG:CZ	1:A:283:LEU:H	1.82	0.92
1:B:40:PRO:O	1:B:41:ILE:HG13	1.70	0.91
1:A:42:ILE:HG13	1:A:43:GLY:H	1.35	0.91
1:A:186:ARG:HH11	1:A:186:ARG:HG2	1.37	0.90
1:A:103:LEU:HD11	1:A:369:PRO:HG2	1.54	0.90
1:B:286:MET:HA	1:B:289:ILE:HD12	1.54	0.89
1:B:206:ASN:O	1:B:210:LEU:HB2	1.74	0.88
1:A:121:THR:O	1:A:125:ILE:HD11	1.73	0.88
1:A:41:ILE:CG1	1:A:42:ILE:N	2.37	0.86
1:B:310:TYR:CE1	1:B:482:PRO:HD3	2.11	0.86
1:B:98:SER:HA	1:B:434:LYS:HZ3	1.41	0.85
1:A:310:TYR:HE1	1:A:482:PRO:CD	1.90	0.85
1:B:302:GLU:O	1:B:306:THR:HG22	1.76	0.85

Continued on next page...

Continued from previous page...

Atom-1	Atom-2	Interatomic distance (Å)	Clash overlap (Å)
1:A:282:ARG:NH1	1:A:284:TYR:H	1.75	0.84
2:A:500:HEM:HBC2	2:A:500:HEM:CMC	2.09	0.83
1:A:83:TYR:CE2	1:A:87:LYS:NZ	2.47	0.82
1:B:316:MET:CE	1:B:462:PRO:HA	2.10	0.82
1:A:80:MET:CE	1:A:389:VAL:HG13	2.11	0.81
1:B:112:ARG:HG3	1:B:112:ARG:HH11	1.46	0.80
1:A:198:ARG:O	1:A:202:LEU:HD22	1.81	0.80
1:B:98:SER:CA	1:B:434:LYS:HZ3	1.91	0.80
1:A:282:ARG:HH12	1:A:284:TYR:H	1.28	0.80
1:A:316:MET:CE	1:A:462:PRO:HA	2.10	0.80
1:B:310:TYR:HE1	1:B:482:PRO:CD	1.94	0.79
1:A:410:LYS:HB2	1:A:413:HIS:CE1	2.17	0.79
1:A:461:LYS:HB3	1:A:488:CYS:HB2	1.66	0.78
1:A:121:THR:C	1:A:125:ILE:HD11	2.03	0.78
1:B:434:LYS:HZ2	1:B:435:ARG:HG3	1.49	0.77
1:A:39:LEU:HB2	1:A:42:ILE:HD11	1.66	0.77
1:B:103:LEU:HD11	1:B:369:PRO:HG2	1.66	0.76
1:B:300:GLY:HA2	2:B:500:HEM:HMC2	1.68	0.76
1:A:40:PRO:O	1:A:41:ILE:CG1	2.30	0.76
1:B:302:GLU:O	1:B:306:THR:CG2	2.34	0.76
1:B:112:ARG:CG	1:B:112:ARG:HH11	1.99	0.74
1:B:442:LEU:O	1:B:446:GLU:HB2	1.86	0.74
1:A:357:ILE:O	1:A:361:ILE:HG12	1.88	0.73
1:A:102:ASP:O	1:A:103:LEU:HD12	1.88	0.73
1:A:300:GLY:HA2	2:A:500:HEM:HMC2	1.70	0.73
1:A:266:THR:O	1:A:270:LEU:HD22	1.88	0.72
1:A:122:TRP:O	1:A:125:ILE:HD12	1.90	0.72
1:A:316:MET:HE1	1:A:462:PRO:HA	1.70	0.72
1:A:283:LEU:HD23	1:A:284:TYR:CE2	2.24	0.72
1:A:121:THR:O	1:A:125:ILE:CD1	2.37	0.72
1:B:99:GLY:HA3	1:B:371:GLU:HB3	1.72	0.72
1:B:110:ARG:O	1:B:112:ARG:NH1	2.23	0.72
1:B:98:SER:C	1:B:434:LYS:HZ3	1.94	0.71
1:A:276:GLU:HG2	1:A:276:GLU:O	1.90	0.71
1:A:350:MET:CE	1:A:451:LEU:HD23	2.20	0.71
2:B:500:HEM:CMC	2:B:500:HEM:HBC2	2.20	0.71
1:B:286:MET:HA	1:B:289:ILE:CD1	2.20	0.71
1:B:269:LEU:HD23	1:B:289:ILE:HG23	1.73	0.71
1:B:144:GLU:O	1:B:148:GLN:HG3	1.90	0.71
1:A:373:THR:O	1:A:385:LYS:HE3	1.91	0.70
1:A:206:ASN:O	1:A:210:LEU:HD12	1.91	0.70

Continued on next page...

Continued from previous page...

Atom-1	Atom-2	Interatomic distance (Å)	Clash overlap (Å)
1:A:310:TYR:CE1	1:A:482:PRO:CD	2.69	0.70
1:A:337:ARG:HH12	1:A:343:ASP:CG	1.95	0.69
1:B:310:TYR:CE1	1:B:482:PRO:HB3	2.27	0.69
1:A:442:LEU:O	1:A:446:GLU:HB2	1.92	0.69
1:A:282:ARG:NE	1:A:282:ARG:HA	2.07	0.69
1:B:343:ASP:CB	1:B:347:MET:HE2	2.21	0.69
1:B:41:ILE:HD12	1:B:42:ILE:HG23	1.73	0.69
1:A:123:LYS:HE2	1:A:127:ARG:HH22	1.58	0.68
1:B:198:ARG:O	1:B:202:LEU:HD12	1.93	0.68
1:B:98:SER:CB	1:B:434:LYS:HE2	2.23	0.68
1:B:203:PHE:HB3	1:B:302:GLU:HG2	1.75	0.68
1:A:350:MET:HE1	1:A:451:LEU:HD23	1.75	0.68
1:B:98:SER:N	1:B:434:LYS:HE2	2.10	0.67
1:B:415:LEU:O	1:B:416:ASN:CB	2.43	0.67
1:B:307:THR:HG21	1:B:447:LEU:HD21	1.76	0.67
2:A:500:HEM:HBC2	2:A:500:HEM:HMC2	1.76	0.66
1:B:310:TYR:CE1	1:B:482:PRO:CD	2.75	0.66
1:A:316:MET:CE	1:A:462:PRO:CA	2.73	0.66
1:A:41:ILE:HG13	1:A:42:ILE:N	2.09	0.66
1:B:228:LEU:C	1:B:233:ARG:HH22	1.99	0.66
1:B:450:LEU:O	1:B:454:ILE:HG12	1.95	0.66
2:B:500:HEM:HBC2	2:B:500:HEM:HMC2	1.78	0.66
1:A:110:ARG:O	1:A:112:ARG:NH1	2.29	0.65
1:B:357:ILE:O	1:B:361:ILE:HG12	1.96	0.65
1:A:80:MET:HE1	1:A:389:VAL:HG13	1.78	0.65
1:B:316:MET:CE	1:B:462:PRO:CA	2.75	0.65
1:A:232:HIS:O	1:A:236:ILE:HD12	1.97	0.65
1:B:363:LEU:O	1:B:479:GLY:HA2	1.97	0.65
1:B:373:THR:O	1:B:385:LYS:HE3	1.97	0.65
1:B:316:MET:HE2	1:B:462:PRO:CA	2.27	0.64
1:A:316:MET:HE3	1:A:462:PRO:CA	2.27	0.64
1:B:112:ARG:HD2	1:B:291:VAL:HG21	1.78	0.64
1:A:109:HIS:NE2	3:A:501:LC4:O17	2.30	0.64
1:B:285:THR:HG23	1:B:288:GLY:H	1.61	0.63
1:B:242:VAL:HG11	3:B:501:LC4:H3	1.80	0.63
1:A:186:ARG:HH11	1:A:186:ARG:CG	2.09	0.62
1:B:98:SER:HB2	1:B:373:THR:HG21	1.80	0.62
1:B:233:ARG:O	1:B:237:LYS:HG3	2.00	0.62
1:B:100:ARG:NH2	1:B:368:LEU:HB3	2.14	0.62
1:A:177:CYS:O	1:A:180:ILE:HG22	2.00	0.61
1:B:242:VAL:HB	3:B:501:LC4:O1	2.00	0.61

Continued on next page...

Continued from previous page...

Atom-1	Atom-2	Interatomic distance (Å)	Clash overlap (Å)
1:B:112:ARG:NH1	1:B:112:ARG:HG3	2.15	0.61
1:B:109:HIS:NE2	3:B:501:LC4:O17	2.33	0.61
1:B:245:TYR:CZ	1:B:249:ARG:CZ	2.83	0.61
1:B:98:SER:O	1:B:434:LYS:NZ	2.34	0.61
1:A:59:ARG:NH1	1:A:63:ARG:NH2	2.49	0.61
1:A:100:ARG:NH2	1:A:368:LEU:HB3	2.15	0.61
1:B:177:CYS:HG	1:B:196:PHE:HE1	1.50	0.60
1:B:239:VAL:HG13	3:B:501:LC4:O17	2.01	0.60
1:B:415:LEU:O	1:B:416:ASN:HB2	2.00	0.60
1:B:50:LEU:HD22	1:B:50:LEU:H	1.65	0.60
1:A:144:GLU:O	1:A:148:GLN:HG3	2.00	0.60
1:B:461:LYS:HB3	1:B:488:CYS:HB2	1.83	0.60
1:B:342:LYS:O	1:B:345:GLN:HG3	2.01	0.60
1:A:325:LEU:HD11	1:A:350:MET:HA	1.84	0.59
1:B:177:CYS:SG	1:B:196:PHE:HE1	2.26	0.59
1:A:184:LEU:HD12	1:A:293:VAL:HG13	1.84	0.59
1:A:172:ILE:HD12	1:A:308:LEU:HB3	1.85	0.59
1:A:198:ARG:O	1:A:202:LEU:CD2	2.51	0.58
1:A:310:TYR:CE1	1:A:482:PRO:HB3	2.37	0.58
1:B:295:ASP:O	1:B:299:ALA:CB	2.51	0.58
1:A:312:LEU:HD21	1:A:454:ILE:CD1	2.33	0.58
1:B:310:TYR:CE1	1:B:482:PRO:CB	2.86	0.58
1:A:285:THR:HG23	1:A:288:GLY:H	1.68	0.58
1:A:39:LEU:HD22	1:A:42:ILE:HD11	1.84	0.58
1:B:67:VAL:HG21	1:B:378:PHE:HE2	1.69	0.58
1:A:298:PHE:CD2	3:A:501:LC4:H3A	2.39	0.58
1:A:41:ILE:HG12	1:A:42:ILE:N	2.01	0.58
1:A:144:GLU:OE1	1:A:341:ILE:HG13	2.03	0.58
1:A:337:ARG:NH1	1:A:343:ASP:OD2	2.32	0.58
1:A:328:GLU:OE1	1:A:348:PRO:HD2	2.04	0.57
2:A:500:HEM:CBC	2:A:500:HEM:HMC2	2.34	0.57
1:A:242:VAL:HB	3:A:501:LC4:O1	2.05	0.56
1:A:39:LEU:CB	1:A:42:ILE:HD11	2.34	0.56
1:B:41:ILE:CD1	1:B:42:ILE:HG23	2.35	0.56
1:A:125:ILE:O	1:A:129:SER:OG	2.24	0.56
1:A:122:TRP:HA	1:A:125:ILE:CD1	2.36	0.56
1:B:273:MET:HG2	1:B:282:ARG:HH22	1.70	0.56
1:B:415:LEU:O	1:B:420:LYS:O	2.24	0.56
1:B:102:ASP:O	1:B:103:LEU:HD12	2.06	0.56
1:B:109:HIS:ND1	1:B:295:ASP:OD2	2.36	0.55
1:A:81:HIS:CD2	1:A:395:SER:HB3	2.41	0.55

Continued on next page...

Continued from previous page...

Atom-1	Atom-2	Interatomic distance (Å)	Clash overlap (Å)
1:B:300:GLY:HA2	2:B:500:HEM:CMC	2.36	0.55
1:A:206:ASN:C	1:A:210:LEU:HD12	2.26	0.55
1:A:109:HIS:ND1	1:A:295:ASP:OD2	2.40	0.55
1:A:239:VAL:O	3:A:501:LC4:O1	2.24	0.55
1:B:412:GLU:HA	1:B:415:LEU:HB3	1.89	0.55
1:B:67:VAL:HG21	1:B:378:PHE:CE2	2.42	0.55
1:A:445:MET:HG2	1:A:449:LEU:HD22	1.89	0.54
1:B:295:ASP:O	1:B:299:ALA:HB2	2.06	0.54
1:B:385:LYS:HG2	1:B:386:GLY:N	2.23	0.54
1:B:102:ASP:OD2	1:B:110:ARG:HD3	2.07	0.53
1:B:229:PRO:N	1:B:233:ARG:HH22	2.07	0.53
1:B:385:LYS:CG	1:B:386:GLY:N	2.71	0.53
1:A:317:LYS:HD2	1:A:469:ILE:HB	1.90	0.53
1:A:52:ASN:C	1:A:52:ASN:OD1	2.47	0.53
1:A:109:HIS:CE1	1:A:295:ASP:OD2	2.61	0.53
1:B:399:ASP:OD1	1:B:401:GLN:HB2	2.08	0.53
1:A:276:GLU:CD	1:A:282:ARG:CZ	2.77	0.53
1:A:208:HIS:ND1	1:A:209:LEU:HD13	2.24	0.53
1:B:298:PHE:CD2	3:B:501:LC4:H3A	2.44	0.53
1:B:32:LEU:H	1:B:32:LEU:HD12	1.72	0.53
1:A:104:PRO:HG2	1:A:222:PRO:HG3	1.91	0.53
1:A:316:MET:HE3	1:A:462:PRO:CB	2.38	0.53
1:A:350:MET:HE3	1:A:451:LEU:HD23	1.90	0.53
1:B:190:ASP:C	1:B:192:ASN:H	2.12	0.52
1:B:229:PRO:C	1:B:233:ARG:HH12	2.12	0.52
1:B:207:PHE:CD1	3:B:501:LC4:H8	2.45	0.52
1:A:374:ARG:O	1:A:376:THR:OG1	2.27	0.52
1:B:98:SER:C	1:B:434:LYS:NZ	2.60	0.52
1:A:225:LEU:HA	1:A:228:LEU:HD22	1.92	0.52
1:B:286:MET:CA	1:B:289:ILE:HD12	2.34	0.52
1:B:172:ILE:HD12	1:B:308:LEU:HB3	1.92	0.52
1:A:401:GLN:OE1	1:A:401:GLN:HA	2.10	0.51
1:A:373:THR:O	1:A:385:LYS:CE	2.57	0.51
1:A:80:MET:HE2	1:A:389:VAL:HG13	1.88	0.51
1:B:317:LYS:HD2	1:B:469:ILE:HB	1.92	0.51
1:B:378:PHE:HB2	1:B:383:ILE:HD12	1.92	0.51
1:B:239:VAL:O	3:B:501:LC4:O1	2.29	0.51
1:A:295:ASP:O	1:A:299:ALA:HB2	2.11	0.51
1:B:93:TYR:HB3	1:B:96:GLU:HB2	1.93	0.51
1:A:416:ASN:C	1:A:418:ASN:H	2.13	0.51
1:A:186:ARG:NH1	1:A:186:ARG:HG2	2.14	0.50

Continued on next page...

Continued from previous page...

Atom-1	Atom-2	Interatomic distance (Å)	Clash overlap (Å)
1:A:316:MET:HE3	1:A:462:PRO:HB3	1.93	0.50
1:B:317:LYS:HD3	1:B:471:LEU:HD22	1.93	0.50
1:A:100:ARG:HD3	1:A:369:PRO:O	2.12	0.50
1:B:329:ILE:HG21	1:B:456:GLN:HB2	1.94	0.50
1:A:42:ILE:CG1	1:A:43:GLY:N	2.62	0.50
1:A:368:LEU:HB2	2:A:500:HEM:HAA2	1.94	0.50
1:A:310:TYR:CE1	1:A:482:PRO:CB	2.95	0.50
1:B:245:TYR:CZ	1:B:249:ARG:NH2	2.79	0.50
1:B:378:PHE:CD2	1:B:379:ARG:HG3	2.47	0.50
1:B:316:MET:HE2	1:B:462:PRO:N	2.27	0.50
1:A:367:ASN:HA	1:A:393:LEU:HD22	1.94	0.49
1:B:257:LEU:O	1:B:257:LEU:HD13	2.11	0.49
1:A:39:LEU:HB2	1:A:42:ILE:CD1	2.39	0.49
1:B:373:THR:O	1:B:385:LYS:CE	2.59	0.49
1:A:354:VAL:O	1:A:358:GLN:HG3	2.12	0.49
1:B:310:TYR:CD1	1:B:482:PRO:HB3	2.47	0.49
1:B:216:GLN:NE2	1:B:216:GLN:HA	2.27	0.49
1:B:52:ASN:OD1	1:B:52:ASN:C	2.51	0.49
1:A:295:ASP:O	1:A:299:ALA:CB	2.61	0.49
1:B:437:CYS:HB2	2:B:500:HEM:NA	2.27	0.49
1:B:430:PHE:O	1:B:431:SER:CB	2.61	0.49
1:A:63:ARG:HB3	1:A:64:PHE:CD2	2.48	0.48
1:B:303:THR:HG22	3:B:501:LC4:H10A	1.95	0.48
1:B:412:GLU:HA	1:B:415:LEU:CB	2.42	0.48
1:B:63:ARG:HB3	1:B:64:PHE:CD2	2.48	0.48
1:A:416:ASN:C	1:A:418:ASN:N	2.67	0.48
1:A:112:ARG:O	1:A:117:ASN:HB2	2.13	0.48
1:A:88:GLU:O	1:A:92:ASP:HB2	2.12	0.48
1:B:177:CYS:SG	1:B:196:PHE:CE1	3.03	0.48
1:B:98:SER:OG	1:B:434:LYS:HE2	2.12	0.48
1:A:363:LEU:O	1:A:479:GLY:HA2	2.14	0.48
1:B:173:GLY:O	1:B:176:PRO:HD2	2.14	0.48
1:A:207:PHE:CD1	3:A:501:LC4:H8	2.49	0.48
1:B:217:LEU:HD23	1:B:225:LEU:HD21	1.96	0.48
1:B:266:THR:O	1:B:270:LEU:HD22	2.14	0.48
1:A:102:ASP:OD2	1:A:110:ARG:HD3	2.14	0.48
1:A:82:GLY:O	1:A:86:VAL:HG23	2.14	0.48
2:B:500:HEM:NA	3:B:501:LC4:N15	2.62	0.48
1:A:242:VAL:HG11	3:A:501:LC4:H3	1.96	0.48
1:A:416:ASN:O	1:A:418:ASN:N	2.47	0.47
1:A:114:ILE:HG22	2:A:500:HEM:O1D	2.14	0.47

Continued on next page...

Continued from previous page...

Atom-1	Atom-2	Interatomic distance (Å)	Clash overlap (Å)
1:A:282:ARG:NH1	1:A:283:LEU:H	2.10	0.47
1:B:307:THR:CG2	1:B:447:LEU:HD21	2.44	0.47
1:A:39:LEU:CD2	1:A:42:ILE:HD11	2.44	0.47
1:A:112:ARG:HG3	1:A:112:ARG:NH1	2.01	0.47
1:A:190:ASP:C	1:A:192:ASN:H	2.17	0.47
1:A:465:ASP:C	1:A:467:LYS:H	2.18	0.47
1:B:253:HIS:CD2	1:B:266:THR:HB	2.50	0.47
1:B:430:PHE:O	1:B:431:SER:HB3	2.14	0.47
1:A:59:ARG:HH12	1:A:63:ARG:NH2	2.12	0.47
1:B:435:ARG:O	2:B:500:HEM:HBA2	2.15	0.47
1:A:205:GLU:OE1	1:A:234:LYS:HE3	2.15	0.46
1:A:300:GLY:HA2	2:A:500:HEM:CMC	2.41	0.46
1:A:292:THR:O	1:A:296:LEU:HD12	2.15	0.46
1:A:448:PHE:CD2	1:A:449:LEU:HD13	2.50	0.46
1:B:152:HIS:ND1	1:B:152:HIS:C	2.68	0.46
1:B:177:CYS:O	1:B:180:ILE:HG22	2.16	0.46
1:A:96:GLU:OE2	1:A:96:GLU:N	2.48	0.46
1:B:80:MET:HB2	1:B:80:MET:HE2	1.61	0.46
1:B:445:MET:HG2	1:B:449:LEU:HD22	1.97	0.46
1:A:111:ASP:HA	1:A:117:ASN:HA	1.98	0.46
2:B:500:HEM:HMC2	2:B:500:HEM:CBC	2.43	0.46
1:A:216:GLN:HA	1:A:216:GLN:NE2	2.30	0.45
1:A:268:CYS:O	1:A:272:GLU:HG2	2.16	0.45
1:B:208:HIS:ND1	1:B:209:LEU:HD13	2.30	0.45
1:B:100:ARG:HD3	1:B:369:PRO:O	2.16	0.45
1:B:283:LEU:HD23	1:B:284:TYR:CE2	2.52	0.45
1:B:302:GLU:O	1:B:306:THR:HG23	2.15	0.45
1:B:310:TYR:OH	1:B:473:PRO:HA	2.17	0.45
1:A:208:HIS:HA	1:A:481:ILE:HD13	1.99	0.45
1:B:278:HIS:O	1:B:279:SER:C	2.55	0.45
1:B:434:LYS:NZ	1:B:435:ARG:HG3	2.26	0.45
1:B:474:ILE:N	1:B:481:ILE:O	2.40	0.45
1:A:134:ARG:NH2	1:A:134:ARG:HB2	2.13	0.45
1:B:110:ARG:O	1:B:112:ARG:HG3	2.17	0.45
1:B:132:THR:CG2	1:B:265:LEU:HD22	2.46	0.45
1:A:430:PHE:HB3	1:A:437:CYS:HB3	1.98	0.45
1:A:430:PHE:O	1:A:431:SER:CB	2.64	0.45
1:A:303:THR:HG22	3:A:501:LC4:H10A	1.99	0.45
1:A:122:TRP:HA	1:A:125:ILE:HD11	1.98	0.44
1:A:298:PHE:C	1:A:298:PHE:CD1	2.91	0.44
1:B:207:PHE:HD1	1:B:207:PHE:HA	1.69	0.44

Continued on next page...

Continued from previous page...

Atom-1	Atom-2	Interatomic distance (Å)	Clash overlap (Å)
1:B:33:PRO:HG2	1:B:69:THR:OG1	2.17	0.44
1:A:102:ASP:C	1:A:103:LEU:HD12	2.37	0.44
1:A:203:PHE:HE1	1:A:242:VAL:HG21	1.82	0.44
1:A:448:PHE:HD2	1:A:449:LEU:HD13	1.83	0.44
1:B:189:PHE:CD1	1:B:196:PHE:HB2	2.52	0.44
1:A:177:CYS:SG	1:A:196:PHE:HE1	2.40	0.44
1:A:282:ARG:NH2	1:A:283:LEU:H	2.12	0.44
1:B:175:ALA:O	1:B:179:VAL:HG23	2.18	0.44
1:A:343:ASP:O	1:A:347:MET:HG3	2.18	0.44
1:A:126:ARG:NH2	1:A:436:VAL:O	2.50	0.44
1:B:173:GLY:C	1:B:176:PRO:HD2	2.38	0.44
1:B:266:THR:O	1:B:270:LEU:CD2	2.66	0.44
1:B:86:VAL:HG13	1:B:391:PRO:HB2	1.98	0.44
1:A:312:LEU:CD2	1:A:454:ILE:HD11	2.48	0.44
1:A:175:ALA:HB3	1:A:176:PRO:HD3	1.99	0.44
1:A:437:CYS:HB2	2:A:500:HEM:NA	2.33	0.44
1:B:439:GLY:HA3	2:B:500:HEM:C3C	2.53	0.44
1:A:333:ILE:HD11	1:A:347:MET:HE2	2.00	0.44
1:A:373:THR:O	1:A:385:LYS:CD	2.66	0.44
1:A:385:LYS:CG	1:A:386:GLY:N	2.81	0.44
1:B:98:SER:OG	1:B:434:LYS:CD	2.66	0.44
1:B:245:TYR:CZ	1:B:249:ARG:NH1	2.86	0.43
1:B:258:ASP:HA	1:B:259:PRO:HD3	1.87	0.43
1:A:115:ILE:HG13	1:A:115:ILE:H	1.65	0.43
1:A:257:LEU:HD22	1:A:270:LEU:HB3	2.00	0.43
1:A:83:TYR:CZ	1:A:87:LYS:CE	3.02	0.43
1:B:113:GLY:HA3	1:B:291:VAL:HG12	2.00	0.43
1:B:185:PHE:C	1:B:187:LYS:N	2.71	0.43
1:B:316:MET:HB3	1:B:462:PRO:HG3	2.00	0.43
1:B:368:LEU:HD12	1:B:369:PRO:HD3	2.01	0.43
1:A:260:ASN:O	1:A:262:PRO:HD3	2.18	0.43
1:A:342:LYS:O	1:A:345:GLN:HG3	2.18	0.43
2:A:500:HEM:NA	3:A:501:LC4:N15	2.66	0.43
1:B:337:ARG:HH12	1:B:343:ASP:CG	2.22	0.43
1:B:98:SER:OG	1:B:434:LYS:HD3	2.18	0.43
1:A:249:ARG:HD3	1:A:249:ARG:HA	1.52	0.43
1:B:209:LEU:HA	1:B:209:LEU:HD12	1.90	0.43
1:B:374:ARG:O	1:B:376:THR:OG1	2.35	0.43
1:A:123:LYS:CE	1:A:127:ARG:HH22	2.29	0.43
1:A:115:ILE:HA	2:A:500:HEM:HAD2	2.01	0.43
1:A:51:LYS:HA	1:A:213:PRO:HG3	2.00	0.43

Continued on next page...

Continued from previous page...

Atom-1	Atom-2	Interatomic distance (Å)	Clash overlap (Å)
1:B:148:GLN:HB3	1:B:338:ILE:HD13	2.00	0.43
1:A:258:ASP:OD1	1:A:261:CYS:HB2	2.19	0.42
1:B:282:ARG:CZ	1:B:284:TYR:O	2.67	0.42
1:B:67:VAL:CG2	1:B:378:PHE:HE2	2.31	0.42
1:B:308:LEU:HD12	1:B:308:LEU:HA	1.79	0.42
1:A:310:TYR:CD1	1:A:482:PRO:HB3	2.54	0.42
1:A:350:MET:CE	1:A:354:VAL:HG23	2.49	0.42
1:A:356:GLU:OE2	1:A:413:HIS:HB2	2.18	0.42
1:B:253:HIS:NE2	1:B:264:ASP:OD1	2.52	0.42
1:B:490:ILE:H	1:B:490:ILE:HD13	1.84	0.42
1:B:88:GLU:O	1:B:92:ASP:HB2	2.18	0.42
1:A:285:THR:O	1:A:288:GLY:N	2.52	0.42
1:A:423:TYR:CD2	1:A:423:TYR:C	2.93	0.42
1:B:367:ASN:HA	1:B:393:LEU:HD22	2.01	0.42
1:B:76:ARG:NH2	1:B:384:PRO:HB2	2.35	0.42
1:B:244:GLU:O	1:B:247:SER:HB3	2.20	0.42
1:B:295:ASP:O	1:B:299:ALA:HB3	2.18	0.42
1:B:378:PHE:CB	1:B:383:ILE:HD12	2.50	0.42
1:A:207:PHE:CZ	1:A:479:GLY:HA3	2.55	0.42
1:A:122:TRP:CA	1:A:125:ILE:HD11	2.50	0.42
1:A:258:ASP:HA	1:A:259:PRO:HD3	1.77	0.42
1:A:177:CYS:SG	1:A:196:PHE:CE1	3.13	0.42
1:A:253:HIS:NE2	1:A:264:ASP:OD1	2.46	0.42
1:A:33:PRO:HA	1:A:34:PRO:HD3	1.91	0.42
1:B:112:ARG:O	1:B:117:ASN:HB2	2.19	0.42
1:A:282:ARG:NH1	1:A:284:TYR:N	2.55	0.41
1:A:152:HIS:C	1:A:152:HIS:ND1	2.73	0.41
1:A:253:HIS:CD2	1:A:266:THR:HB	2.55	0.41
1:A:385:LYS:HG2	1:A:386:GLY:N	2.34	0.41
1:A:41:ILE:CG1	1:A:42:ILE:HG23	2.50	0.41
1:A:435:ARG:O	2:A:500:HEM:HBA2	2.20	0.41
1:A:103:LEU:HD23	1:A:478:PHE:HE1	1.85	0.41
1:B:102:ASP:O	1:B:103:LEU:CD1	2.69	0.41
1:A:67:VAL:HG21	1:A:378:PHE:HE2	1.86	0.41
1:B:245:TYR:CE1	1:B:249:ARG:NH2	2.88	0.41
1:A:341:ILE:H	1:A:341:ILE:HG13	1.60	0.41
1:A:99:GLY:C	1:A:371:GLU:H	2.24	0.41
1:A:474:ILE:N	1:A:481:ILE:O	2.42	0.41
1:A:93:TYR:HB3	1:A:96:GLU:HB2	2.02	0.41
1:B:431:SER:CB	2:B:500:HEM:HBA1	2.50	0.41
1:B:303:THR:HB	2:B:500:HEM:CAB	2.51	0.41

Continued on next page...

Continued from previous page...

Atom-1	Atom-2	Interatomic distance (Å)	Clash overlap (Å)
1:B:50:LEU:CD2	1:B:50:LEU:H	2.32	0.41
1:B:128:PHE:CE2	1:B:269:LEU:HD12	2.56	0.41
1:A:149:ARG:O	1:A:152:HIS:HB3	2.20	0.41
1:A:284:TYR:HB3	1:A:289:ILE:HD11	2.03	0.41
1:A:144:GLU:CD	1:A:341:ILE:HG13	2.41	0.41
1:A:59:ARG:HH12	1:A:63:ARG:HH22	1.69	0.41
1:B:445:MET:O	1:B:449:LEU:HB2	2.20	0.41
1:B:316:MET:SD	1:B:487:LEU:HD23	2.60	0.41
1:B:322:GLU:HG2	1:B:326:HIS:NE2	2.36	0.40
1:A:312:LEU:HD21	1:A:454:ILE:HD11	2.04	0.40
1:B:306:THR:HB	1:B:309:ARG:NH1	2.36	0.40
1:A:317:LYS:O	1:A:319:PRO:HD3	2.21	0.40
1:B:50:LEU:HB2	1:B:213:PRO:HB3	2.04	0.40
1:B:316:MET:HE3	1:B:462:PRO:HA	1.95	0.40
1:A:410:LYS:O	1:A:413:HIS:ND1	2.55	0.40
1:B:337:ARG:NH1	1:B:343:ASP:OD2	2.47	0.40
1:B:411:PRO:O	1:B:415:LEU:HB2	2.21	0.40

There are no symmetry-related clashes.

5.3 Torsion angles ⓘ

5.3.1 Protein backbone ⓘ

In the following table, the Percentiles column shows the percent Ramachandran outliers of the chain as a percentile score with respect to all X-ray entries followed by that with respect to entries of similar resolution.

The Analysed column shows the number of residues for which the backbone conformation was analysed, and the total number of residues.

Mol	Chain	Analysed	Favoured	Allowed	Outliers	Percentiles	
1	A	456/476 (96%)	422 (92%)	27 (6%)	7 (2%)	12	45
1	B	455/476 (96%)	417 (92%)	36 (8%)	2 (0%)	38	75
All	All	911/952 (96%)	839 (92%)	63 (7%)	9 (1%)	18	57

All (9) Ramachandran outliers are listed below:

Mol	Chain	Res	Type
1	A	275	LYS

Continued on next page...

Continued from previous page...

Mol	Chain	Res	Type
1	A	491	PRO
1	A	431	SER
1	A	466	PRO
1	B	191	TYR
1	A	108	ALA
1	A	191	TYR
1	B	431	SER
1	A	391	PRO

5.3.2 Protein sidechains ⓘ

In the following table, the Percentiles column shows the percent sidechain outliers of the chain as a percentile score with respect to all X-ray entries followed by that with respect to entries of similar resolution.

The Analysed column shows the number of residues for which the sidechain conformation was analysed, and the total number of residues.

Mol	Chain	Analysed	Rotameric	Outliers	Percentiles	
1	A	415/428 (97%)	355 (86%)	60 (14%)	4	16
1	B	414/428 (97%)	356 (86%)	58 (14%)	4	18
All	All	829/856 (97%)	711 (86%)	118 (14%)	4	17

All (118) residues with a non-rotameric sidechain are listed below:

Mol	Chain	Res	Type
1	A	31	LYS
1	A	41	ILE
1	A	45	LEU
1	A	49	GLU
1	A	60	LEU
1	A	63	ARG
1	A	70	LEU
1	A	72	VAL
1	A	80	MET
1	A	87	LYS
1	A	90	LEU
1	A	91	LEU
1	A	112	ARG
1	A	125	ILE
1	A	129	SER

Continued on next page...

Continued from previous page...

Mol	Chain	Res	Type
1	A	130	LEU
1	A	134	ARG
1	A	152	HIS
1	A	155	LEU
1	A	186	ARG
1	A	199	LEU
1	A	202	LEU
1	A	204	ASN
1	A	205	GLU
1	A	207	PHE
1	A	209	LEU
1	A	211	SER
1	A	215	LEU
1	A	247	SER
1	A	249	ARG
1	A	258	ASP
1	A	265	LEU
1	A	270	LEU
1	A	276	GLU
1	A	282	ARG
1	A	285	THR
1	A	296	LEU
1	A	298	PHE
1	A	308	LEU
1	A	315	LEU
1	A	323	GLU
1	A	337	ARG
1	A	345	GLN
1	A	368	LEU
1	A	373	THR
1	A	374	ARG
1	A	393	LEU
1	A	397	LEU
1	A	415	LEU
1	A	423	TYR
1	A	447	LEU
1	A	449	LEU
1	A	454	ILE
1	A	455	LEU
1	A	460	LEU
1	A	463	LEU
1	A	486	LYS

Continued on next page...

Continued from previous page...

Mol	Chain	Res	Type
1	A	487	LEU
1	A	490	ILE
1	A	493	SER
1	B	32	LEU
1	B	36	PRO
1	B	48	LEU
1	B	55	LYS
1	B	60	LEU
1	B	62	GLN
1	B	63	ARG
1	B	70	LEU
1	B	90	LEU
1	B	91	LEU
1	B	103	LEU
1	B	112	ARG
1	B	124	ASP
1	B	126	ARG
1	B	130	LEU
1	B	152	HIS
1	B	155	LEU
1	B	199	LEU
1	B	202	LEU
1	B	207	PHE
1	B	209	LEU
1	B	210	LEU
1	B	211	SER
1	B	233	ARG
1	B	249	ARG
1	B	253	HIS
1	B	257	LEU
1	B	258	ASP
1	B	265	LEU
1	B	285	THR
1	B	289	ILE
1	B	296	LEU
1	B	306	THR
1	B	308	LEU
1	B	315	LEU
1	B	320	GLU
1	B	323	GLU
1	B	325	LEU
1	B	337	ARG

Continued on next page...

Continued from previous page...

Mol	Chain	Res	Type
1	B	345	GLN
1	B	359	ARG
1	B	368	LEU
1	B	382	LEU
1	B	393	LEU
1	B	434	LYS
1	B	449	LEU
1	B	454	ILE
1	B	455	LEU
1	B	456	GLN
1	B	460	LEU
1	B	463	LEU
1	B	464	VAL
1	B	465	ASP
1	B	471	LEU
1	B	486	LYS
1	B	487	LEU
1	B	490	ILE
1	B	493	SER

Some sidechains can be flipped to improve hydrogen bonding and reduce clashes. All (1) such sidechains are listed below:

Mol	Chain	Res	Type
1	A	44	ASN

5.3.3 RNA ⓘ

There are no RNA molecules in this entry.

5.4 Non-standard residues in protein, DNA, RNA chains ⓘ

There are no non-standard protein/DNA/RNA residues in this entry.

5.5 Carbohydrates ⓘ

There are no carbohydrates in this entry.

5.6 Ligand geometry

4 ligands are modelled in this entry.

In the following table, the Counts columns list the number of bonds (or angles) for which Mogul statistics could be retrieved, the number of bonds (or angles) that are observed in the model and the number of bonds (or angles) that are defined in the chemical component dictionary. The Link column lists molecule types, if any, to which the group is linked. The Z score for a bond length (or angle) is the number of standard deviations the observed value is removed from the expected value. A bond length (or angle) with $|Z| > 2$ is considered an outlier worth inspection. RMSZ is the root-mean-square of all Z scores of the bond lengths (or angles).

Mol	Type	Chain	Res	Link	Bond lengths			Bond angles		
					Counts	RMSZ	# $ Z > 2$	Counts	RMSZ	# $ Z > 2$
2	HEM	A	500	1,3	28,50,50	2.17	6 (21%)	17,82,82	1.66	4 (23%)
3	LC4	A	501	2	15,19,19	0.59	0	15,21,21	0.49	0
2	HEM	B	500	1,3	28,50,50	2.15	7 (25%)	17,82,82	1.89	5 (29%)
3	LC4	B	501	2	15,19,19	0.57	0	15,21,21	0.82	1 (6%)

In the following table, the Chirals column lists the number of chiral outliers, the number of chiral centers analysed, the number of these observed in the model and the number defined in the chemical component dictionary. Similar counts are reported in the Torsion and Rings columns. '-' means no outliers of that kind were identified.

Mol	Type	Chain	Res	Link	Chirals	Torsions	Rings
2	HEM	A	500	1,3	-	0/6/54/54	0/0/8/8
3	LC4	A	501	2	-	0/12/14/14	0/1/1/1
2	HEM	B	500	1,3	-	0/6/54/54	0/0/8/8
3	LC4	B	501	2	-	0/12/14/14	0/1/1/1

All (13) bond length outliers are listed below:

Mol	Chain	Res	Type	Atoms	Z	Observed(Å)	Ideal(Å)
2	A	500	HEM	C3C-C2C	-5.94	1.32	1.40
2	B	500	HEM	C3C-C2C	-5.22	1.33	1.40
2	B	500	HEM	C3B-C2B	-4.41	1.34	1.40
2	A	500	HEM	C3B-C2B	-4.32	1.34	1.40
2	B	500	HEM	C4D-ND	2.02	1.39	1.36
2	B	500	HEM	C1D-ND	2.08	1.40	1.36
2	A	500	HEM	C4D-ND	2.15	1.39	1.36
2	A	500	HEM	C3C-CAC	2.49	1.52	1.47
2	B	500	HEM	C3C-CAC	2.88	1.53	1.47
2	B	500	HEM	C3B-CAB	3.29	1.54	1.47
2	A	500	HEM	C3B-CAB	3.43	1.54	1.47
2	A	500	HEM	C3D-C2D	5.03	1.52	1.37

Continued on next page...

Continued from previous page...

Mol	Chain	Res	Type	Atoms	Z	Observed(Å)	Ideal(Å)
2	B	500	HEM	C3D-C2D	5.21	1.53	1.37

All (10) bond angle outliers are listed below:

Mol	Chain	Res	Type	Atoms	Z	Observed(°)	Ideal(°)
2	B	500	HEM	CBD-CAD-C3D	-3.65	105.50	112.47
2	A	500	HEM	CMA-C3A-C4A	-2.50	124.62	128.46
2	A	500	HEM	CAD-CBD-CGD	-2.40	108.56	112.66
2	B	500	HEM	C1D-C2D-C3D	-2.25	105.43	107.00
2	B	500	HEM	CMC-C2C-C3C	2.25	129.06	124.89
3	B	501	LC4	C10-C11-N12	2.34	118.04	111.67
2	B	500	HEM	CMB-C2B-C3B	2.39	129.33	124.89
2	A	500	HEM	CMB-C2B-C3B	2.41	129.37	124.89
2	B	500	HEM	C4C-C3C-C2C	2.50	108.65	106.90
2	A	500	HEM	C4C-C3C-C2C	2.72	108.80	106.90

There are no chirality outliers.

There are no torsion outliers.

There are no ring outliers.

4 monomers are involved in 37 short contacts:

Mol	Chain	Res	Type	Clashes	Symm-Clashes
2	A	500	HEM	11	0
3	A	501	LC4	8	0
2	B	500	HEM	11	0
3	B	501	LC4	9	0

5.7 Other polymers [i](#)

There are no such residues in this entry.

5.8 Polymer linkage issues [i](#)

There are no chain breaks in this entry.

6 Fit of model and data [i](#)

6.1 Protein, DNA and RNA chains [i](#)

In the following table, the column labelled ‘#RSRZ> 2’ contains the number (and percentage) of RSRZ outliers, followed by percent RSRZ outliers for the chain as percentile scores relative to all X-ray entries and entries of similar resolution. The OWAB column contains the minimum, median, 95th percentile and maximum values of the occupancy-weighted average B-factor per residue. The column labelled ‘Q< 0.9’ lists the number of (and percentage) of residues with an average occupancy less than 0.9.

Mol	Chain	Analysed	<RSRZ>	#RSRZ>2	OWAB(Å ²)	Q<0.9
1	A	460/476 (96%)	-0.29	0 100 100	20, 45, 71, 88	0
1	B	459/476 (96%)	-0.27	0 100 100	22, 44, 71, 88	0
All	All	919/952 (96%)	-0.28	0 100 100	20, 44, 71, 88	0

There are no RSRZ outliers to report.

6.2 Non-standard residues in protein, DNA, RNA chains [i](#)

There are no non-standard protein/DNA/RNA residues in this entry.

6.3 Carbohydrates [i](#)

There are no carbohydrates in this entry.

6.4 Ligands [i](#)

In the following table, the Atoms column lists the number of modelled atoms in the group and the number defined in the chemical component dictionary. LLDF column lists the quality of electron density of the group with respect to its neighbouring residues in protein, DNA or RNA chains. The B-factors column lists the minimum, median, 95th percentile and maximum values of B factors of atoms in the group. The column labelled ‘Q< 0.9’ lists the number of atoms with occupancy less than 0.9.

Mol	Type	Chain	Res	Atoms	RSCC	RSR	LLDF	B-factors(Å ²)	Q<0.9
3	LC4	B	501	19/19	0.90	0.30	1.84	51,52,61,61	0
3	LC4	A	501	19/19	0.93	0.29	1.58	49,51,58,59	0
2	HEM	B	500	43/43	0.98	0.22	0.44	26,30,42,43	0
2	HEM	A	500	43/43	0.98	0.20	0.14	19,24,38,39	0

6.5 Other polymers [i](#)

There are no such residues in this entry.