



Full wwPDB X-ray Structure Validation Report ⓘ

Feb 14, 2017 – 05:23 am GMT

PDB ID : 5LIA
Title : Crystal structure of murine autotaxin in complex with a small molecule inhibitor
Authors : Turnbull, A.P.; Shah, P.; Cheasty, A.; Raynham, T.; Pang, L.; Owen, P.
Deposited on : 2016-07-14
Resolution : 1.92 Å(reported)

This is a Full wwPDB X-ray Structure Validation Report for a publicly released PDB entry.

We welcome your comments at validation@mail.wwpdb.org

A user guide is available at

<http://wwpdb.org/validation/2016/XrayValidationReportHelp>

with specific help available everywhere you see the ⓘ symbol.

The following versions of software and data (see [references ⓘ](#)) were used in the production of this report:

MolProbity	:	4.02b-467
Mogul	:	1.7.2 (RC1), CSD as538be (2017)
Xtriage (Phenix)	:	1.9-1692
EDS	:	trunk28620
Percentile statistics	:	20161228.v01 (using entries in the PDB archive December 28th 2016)
Refmac	:	5.8.0135
CCP4	:	6.5.0
Ideal geometry (proteins)	:	Engh & Huber (2001)
Ideal geometry (DNA, RNA)	:	Parkinson et al. (1996)
Validation Pipeline (wwPDB-VP)	:	recalc28949

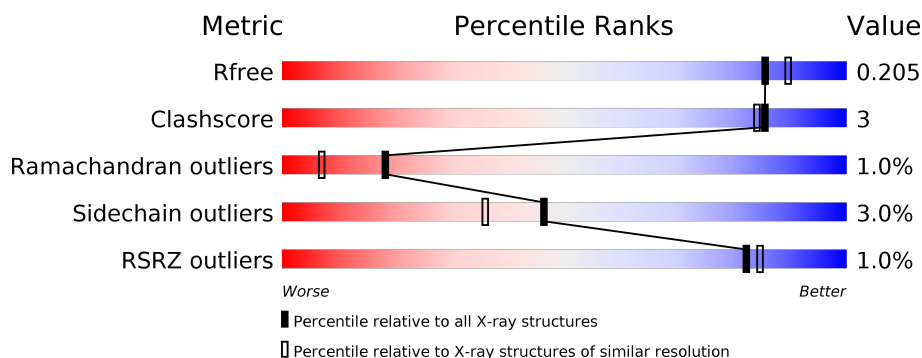
1 Overall quality at a glance

The following experimental techniques were used to determine the structure:

X-RAY DIFFRACTION

The reported resolution of this entry is 1.92 Å.

Percentile scores (ranging between 0-100) for global validation metrics of the entry are shown in the following graphic. The table shows the number of entries on which the scores are based.



Metric	Whole archive (#Entries)	Similar resolution (#Entries, resolution range(Å))
R_{free}	100719	6276 (1.94-1.90)
Clashscore	112137	7025 (1.94-1.90)
Ramachandran outliers	110173	6947 (1.94-1.90)
Sidechain outliers	110143	6948 (1.94-1.90)
RSRZ outliers	101464	6332 (1.94-1.90)

The table below summarises the geometric issues observed across the polymeric chains and their fit to the electron density. The red, orange, yellow and green segments on the lower bar indicate the fraction of residues that contain outliers for ≥ 3 , 2, 1 and 0 types of geometric quality criteria. A grey segment represents the fraction of residues that are not modelled. The numeric value for each fraction is indicated below the corresponding segment, with a dot representing fractions $\leq 5\%$. The upper red bar (where present) indicates the fraction of residues that have poor fit to the electron density. The numeric value is given above the bar.

Mol	Chain	Length	Quality of chain
1	A	838	<div> <div style="width: 100%; height: 10px; position: relative;"> <div style="position: absolute; top: -10px; left: 0; width: 100%; text-align: center;">%</div> <div style="position: absolute; top: 0; left: 0; width: 86%; height: 10px; background-color: green;"></div> <div style="position: absolute; top: 0; left: 86%; width: 14%; height: 10px; background-color: yellow;"></div> <div style="position: absolute; top: 0; left: 99%; width: 1%; height: 10px; background-color: red;"></div> <div style="position: absolute; top: 0; left: 99%; width: 1%; height: 10px; background-color: grey;"></div> </div> <div style="display: flex; justify-content: space-between; width: 100%;"> 86% 9% • • </div> </div>

The following table lists non-polymeric compounds, carbohydrate monomers and non-standard residues in protein, DNA, RNA chains that are outliers for geometric or electron-density-fit criteria:

Mol	Type	Chain	Res	Chirality	Geometry	Clashes	Electron density
11	EDO	A	915	-	-	-	X
11	EDO	A	916	-	-	-	X

Continued on next page...

Continued from previous page...

Mol	Type	Chain	Res	Chirality	Geometry	Clashes	Electron density
11	EDO	A	917	-	-	-	X
4	MAN	A	906	-	-	-	X
8	CA	A	912	-	-	-	X

2 Entry composition

There are 12 unique types of molecules in this entry. The entry contains 6909 atoms, of which 0 are hydrogens and 0 are deuteriums.

In the tables below, the ZeroOcc column contains the number of atoms modelled with zero occupancy, the AltConf column contains the number of residues with at least one atom in alternate conformation and the Trace column contains the number of residues modelled with at most 2 atoms.

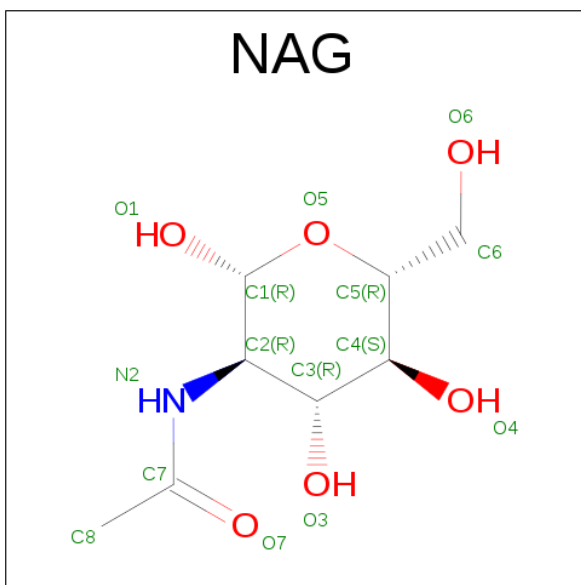
- Molecule 1 is a protein called Ectonucleotide pyrophosphatase/phosphodiesterase family member 2.

Mol	Chain	Residues	Atoms					ZeroOcc	AltConf	Trace
1	A	805	Total	C	N	O	S	0	2	0
			6339	4040	1075	1175	49			

There are 19 discrepancies between the modelled and reference sequences:

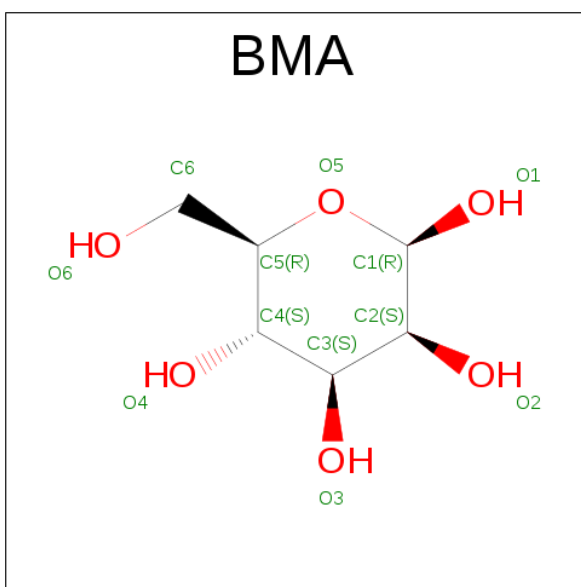
Chain	Residue	Modelled	Actual	Comment	Reference
A	?	-	LYS	deletion	UNP Q9R1E6
A	?	-	VAL	deletion	UNP Q9R1E6
A	?	-	GLU	deletion	UNP Q9R1E6
A	?	-	PRO	deletion	UNP Q9R1E6
A	859	SER	-	expression tag	UNP Q9R1E6
A	860	ARG	-	expression tag	UNP Q9R1E6
A	861	GLU	-	expression tag	UNP Q9R1E6
A	862	ASN	-	expression tag	UNP Q9R1E6
A	863	LEU	-	expression tag	UNP Q9R1E6
A	864	TYR	-	expression tag	UNP Q9R1E6
A	865	PHE	-	expression tag	UNP Q9R1E6
A	866	GLN	-	expression tag	UNP Q9R1E6
A	867	GLY	-	expression tag	UNP Q9R1E6
A	868	HIS	-	expression tag	UNP Q9R1E6
A	869	HIS	-	expression tag	UNP Q9R1E6
A	870	HIS	-	expression tag	UNP Q9R1E6
A	871	HIS	-	expression tag	UNP Q9R1E6
A	872	HIS	-	expression tag	UNP Q9R1E6
A	873	HIS	-	expression tag	UNP Q9R1E6

- Molecule 2 is N-ACETYL-D-GLUCOSAMINE (three-letter code: NAG) (formula: C₈H₁₅NO₆).



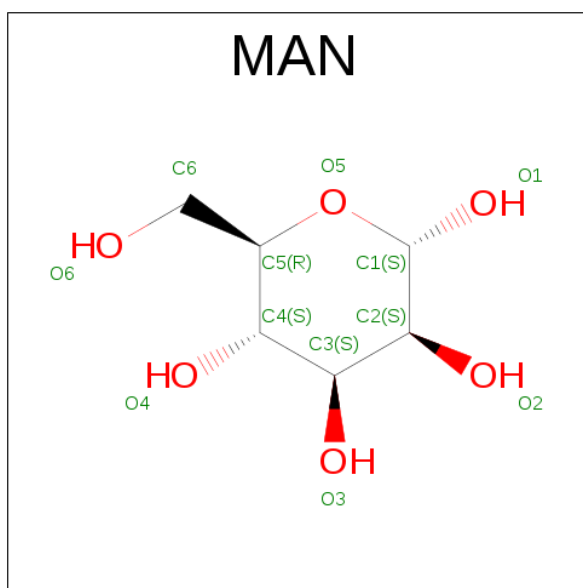
Mol	Chain	Residues	Atoms				ZeroOcc	AltConf
2	A	1	Total	C	N	O	0	0
			14	8	1	5		
2	A	1	Total	C	N	O	0	0
			14	8	1	5		
2	A	1	Total	C	N	O	0	0
			14	8	1	5		

- Molecule 3 is BETA-D-MANNOSE (three-letter code: BMA) (formula: $C_6H_{12}O_6$).



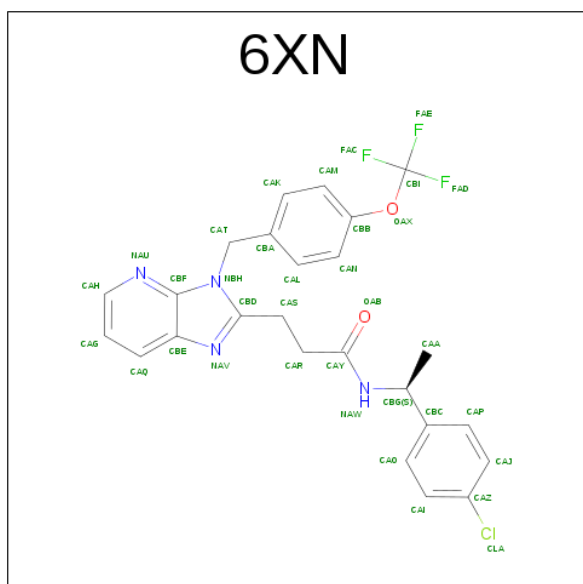
Mol	Chain	Residues	Atoms			ZeroOcc	AltConf
3	A	1	Total	C	O	0	0
			11	6	5		

- Molecule 4 is ALPHA-D-MANNOSE (three-letter code: MAN) (formula: $C_6H_{12}O_6$).



Mol	Chain	Residues	Atoms			ZeroOcc	AltConf
4	A	1	Total	C	O	0	0
			11	6	5		
4	A	1	Total	C	O	0	0
			11	6	5		
4	A	1	Total	C	O	0	0
			11	6	5		

- Molecule 5 is {N}-[(1 {S})-1-(4-chlorophenyl)ethyl]-3-[3-[[4-(trifluoromethoxy)phenyl]methyl]imidazo[4,5-b]pyridin-2-yl]propanamide (three-letter code: 6XN) (formula: $C_{25}H_{22}ClF_3N_4O_2$).

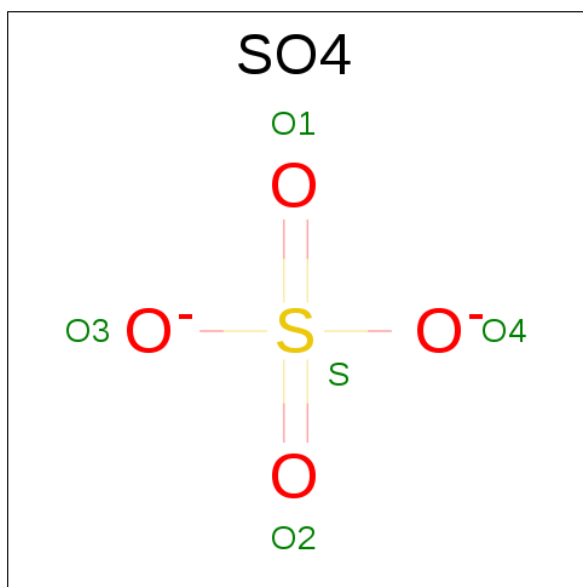


Mol	Chain	Residues	Atoms						ZeroOcc	AltConf
5	A	1	Total	C	Cl	F	N	O	0	0
			35	25	1	3	4	2		

- Molecule 6 is ZINC ION (three-letter code: ZN) (formula: Zn).

Mol	Chain	Residues	Atoms		ZeroOcc	AltConf
6	A	2	Total	Zn	0	0
			2	2		

- Molecule 7 is SULFATE ION (three-letter code: SO4) (formula: O₄S).



Mol	Chain	Residues	Atoms			ZeroOcc	AltConf
7	A	1	Total	O	S	0	0
			5	4	1		

- Molecule 8 is CALCIUM ION (three-letter code: CA) (formula: Ca).

Mol	Chain	Residues	Atoms		ZeroOcc	AltConf
8	A	1	Total	Ca	0	0
			1	1		

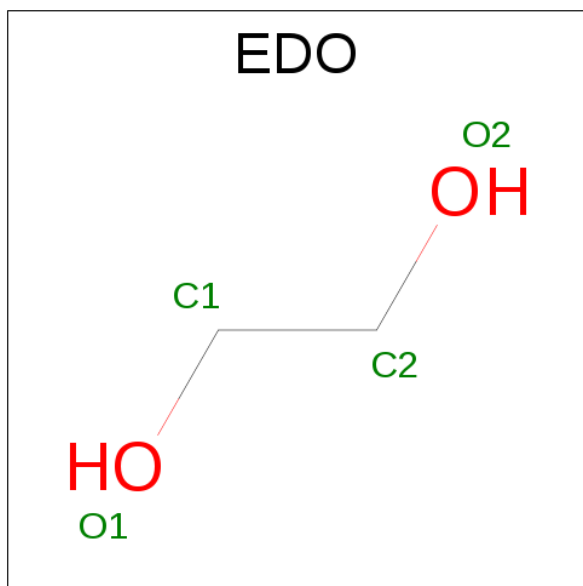
- Molecule 9 is SODIUM ION (three-letter code: NA) (formula: Na).

Mol	Chain	Residues	Atoms		ZeroOcc	AltConf
9	A	1	Total	Na	0	0
			1	1		

- Molecule 10 is POTASSIUM ION (three-letter code: K) (formula: K).

Mol	Chain	Residues	Atoms	ZeroOcc	AltConf
10	A	1	Total K 1 1	0	0

- Molecule 11 is 1,2-ETHANEDIOL (three-letter code: EDO) (formula: C₂H₆O₂).



Mol	Chain	Residues	Atoms	ZeroOcc	AltConf
11	A	1	Total C O 4 2 2	0	0
11	A	1	Total C O 4 2 2	0	0
11	A	1	Total C O 4 2 2	0	0

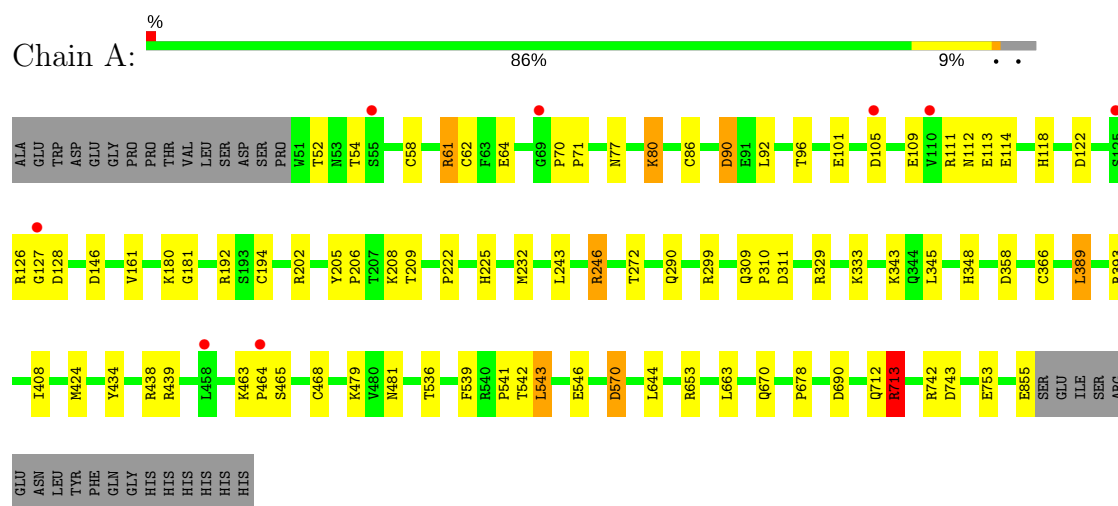
- Molecule 12 is water.

Mol	Chain	Residues	Atoms	ZeroOcc	AltConf
12	A	427	Total O 427 427	0	0

3 Residue-property plots [i](#)

These plots are drawn for all protein, RNA and DNA chains in the entry. The first graphic for a chain summarises the proportions of the various outlier classes displayed in the second graphic. The second graphic shows the sequence view annotated by issues in geometry and electron density. Residues are color-coded according to the number of geometric quality criteria for which they contain at least one outlier: green = 0, yellow = 1, orange = 2 and red = 3 or more. A red dot above a residue indicates a poor fit to the electron density ($RSRZ > 2$). Stretches of 2 or more consecutive residues without any outlier are shown as a green connector. Residues present in the sample, but not in the model, are shown in grey.

- Molecule 1: Ectonucleotide pyrophosphatase/phosphodiesterase family member 2



4 Data and refinement statistics

Property	Value	Source
Space group	P 1	Depositor
Cell constants a, b, c, α , β , γ	61.16Å 61.58Å 66.14Å 85.77° 72.68° 80.21°	Depositor
Resolution (Å)	50.00 – 1.92 60.66 – 1.92	Depositor EDS
% Data completeness (in resolution range)	97.2 (50.00-1.92) 96.5 (60.66-1.92)	Depositor EDS
R_{merge}	0.07	Depositor
R_{sym}	(Not available)	Depositor
$\langle I/\sigma(I) \rangle$ ¹	2.34 (at 1.92Å)	Xtriage
Refinement program	REFMAC 5.8.0073	Depositor
R, R_{free}	0.160 , 0.201 0.169 , 0.205	Depositor DCC
R_{free} test set	3411 reflections (5.33%)	DCC
Wilson B-factor (Å ²)	27.3	Xtriage
Anisotropy	0.256	Xtriage
Bulk solvent k_{sol} (e/Å ³), B_{sol} (Å ²)	0.35 , 46.7	EDS
L-test for twinning ²	$\langle L \rangle = 0.48$, $\langle L^2 \rangle = 0.31$	Xtriage
Estimated twinning fraction	No twinning to report.	Xtriage
F_o, F_c correlation	0.97	EDS
Total number of atoms	6909	wwPDB-VP
Average B, all atoms (Å ²)	36.0	wwPDB-VP

Xtriage's analysis on translational NCS is as follows: *The largest off-origin peak in the Patterson function is 5.97% of the height of the origin peak. No significant pseudotranslation is detected.*

¹Intensities estimated from amplitudes.

²Theoretical values of $\langle |L| \rangle$, $\langle L^2 \rangle$ for acentric reflections are 0.5, 0.333 respectively for untwinned datasets, and 0.375, 0.2 for perfectly twinned datasets.

5 Model quality

5.1 Standard geometry

Bond lengths and bond angles in the following residue types are not validated in this section: ZN, 6XN, NAG, NA, K, EDO, BMA, SO4, CA, MAN

The Z score for a bond length (or angle) is the number of standard deviations the observed value is removed from the expected value. A bond length (or angle) with $|Z| > 5$ is considered an outlier worth inspection. RMSZ is the root-mean-square of all Z scores of the bond lengths (or angles).

Mol	Chain	Bond lengths		Bond angles	
		RMSZ	$\# Z > 5$	RMSZ	$\# Z > 5$
1	A	0.96	3/6531 (0.0%)	0.98	24/8896 (0.3%)

Chiral center outliers are detected by calculating the chiral volume of a chiral center and verifying if the center is modelled as a planar moiety or with the opposite hand. A planarity outlier is detected by checking planarity of atoms in a peptide group, atoms in a mainchain group or atoms of a sidechain that are expected to be planar.

Mol	Chain	#Chirality outliers	#Planarity outliers
1	A	0	6

All (3) bond length outliers are listed below:

Mol	Chain	Res	Type	Atoms	Z	Observed(Å)	Ideal(Å)
1	A	546	GLU	CD-OE2	7.61	1.34	1.25
1	A	439	ARG	CZ-NH1	-5.79	1.25	1.33
1	A	290	GLN	CG-CD	5.14	1.62	1.51

All (24) bond angle outliers are listed below:

Mol	Chain	Res	Type	Atoms	Z	Observed(°)	Ideal(°)
1	A	713	ARG	NE-CZ-NH1	9.64	125.12	120.30
1	A	246	ARG	NE-CZ-NH1	8.26	124.43	120.30
1	A	194[A]	CYS	CA-CB-SG	-8.03	99.55	114.00
1	A	194[B]	CYS	CA-CB-SG	-8.03	99.55	114.00
1	A	202	ARG	NE-CZ-NH2	-7.28	116.66	120.30
1	A	743	ASP	CB-CG-OD2	-7.09	111.92	118.30
1	A	202	ARG	NE-CZ-NH1	6.75	123.67	120.30
1	A	299	ARG	NE-CZ-NH1	6.67	123.63	120.30
1	A	653	ARG	NE-CZ-NH2	-6.49	117.06	120.30
1	A	311	ASP	CB-CG-OD2	6.39	124.05	118.30

Continued on next page...

Continued from previous page...

Mol	Chain	Res	Type	Atoms	Z	Observed(°)	Ideal(°)
1	A	439	ARG	NE-CZ-NH1	6.39	123.50	120.30
1	A	192	ARG	CG-CD-NE	-6.26	98.64	111.80
1	A	543	LEU	CA-CB-CG	6.23	129.64	115.30
1	A	438	ARG	NE-CZ-NH2	-6.04	117.28	120.30
1	A	713	ARG	NE-CZ-NH2	-5.95	117.33	120.30
1	A	208	LYS	CD-CE-NZ	-5.71	98.57	111.70
1	A	77	ASN	CB-CA-C	-5.39	99.61	110.40
1	A	299	ARG	NE-CZ-NH2	-5.32	117.64	120.30
1	A	61	ARG	NE-CZ-NH2	-5.26	117.67	120.30
1	A	742	ARG	NE-CZ-NH2	-5.25	117.67	120.30
1	A	393	ARG	NE-CZ-NH1	5.10	122.85	120.30
1	A	743	ASP	CB-CG-OD1	5.10	122.89	118.30
1	A	690	ASP	CB-CG-OD1	5.05	122.85	118.30
1	A	246	ARG	NE-CZ-NH2	-5.02	117.79	120.30

There are no chirality outliers.

All (6) planarity outliers are listed below:

Mol	Chain	Res	Type	Group
1	A	180	LYS	Peptide
1	A	205	TYR	Mainchain,Peptide
1	A	309	GLN	Mainchain,Peptide
1	A	70	PRO	Peptide

5.2 Too-close contacts

In the following table, the Non-H and H(model) columns list the number of non-hydrogen atoms and hydrogen atoms in the chain respectively. The H(added) column lists the number of hydrogen atoms added and optimized by MolProbity. The Clashes column lists the number of clashes within the asymmetric unit, whereas Symm-Clashes lists symmetry related clashes.

Mol	Chain	Non-H	H(model)	H(added)	Clashes	Symm-Clashes
1	A	6339	0	5905	33	0
2	A	42	0	37	0	0
3	A	11	0	9	0	0
4	A	33	0	28	0	0
5	A	35	0	0	0	0
6	A	2	0	0	1	0
7	A	5	0	0	0	0
8	A	1	0	0	0	0
9	A	1	0	0	0	0

Continued on next page...

Continued from previous page...

Mol	Chain	Non-H	H(model)	H(added)	Clashes	Symm-Clashes
10	A	1	0	0	0	0
11	A	12	0	18	0	0
12	A	427	0	0	3	0
All	All	6909	0	5997	33	0

The all-atom clashscore is defined as the number of clashes found per 1000 atoms (including hydrogen atoms). The all-atom clashscore for this structure is 3.

All (33) close contacts within the same asymmetric unit are listed below, sorted by their clash magnitude.

Atom-1	Atom-2	Interatomic distance (Å)	Clash overlap (Å)
1:A:118:HIS:HD2	1:A:128:ASP:CB	1.81	0.92
1:A:118:HIS:CD2	1:A:128:ASP:CB	2.69	0.74
1:A:209:THR:OG1	6:A:909:ZN:ZN	1.35	0.74
1:A:61:ARG:HD2	1:A:64:GLU:OE2	1.93	0.68
1:A:539:PHE:O	1:A:541:PRO:HD3	1.98	0.64
1:A:146:ASP:OD2	1:A:343:LYS:NZ	2.31	0.61
1:A:62:CYS:SG	1:A:92:LEU:HD22	2.41	0.60
1:A:348:HIS:CD2	1:A:348:HIS:H	2.19	0.59
1:A:243:LEU:HD12	12:A:1124:HOH:O	2.01	0.59
1:A:209:THR:OG1	1:A:358:ASP:OD2	2.10	0.58
1:A:479:LYS:O	1:A:855:GLU:HG3	2.03	0.58
1:A:408:ILE:HD11	1:A:424:MET:SD	2.44	0.58
1:A:570:ASP:HB3	1:A:644:LEU:HD21	1.86	0.57
1:A:80:LYS:NZ	1:A:90:ASP:OD2	2.40	0.54
1:A:463:LYS:HB3	1:A:464:PRO:HD2	1.91	0.53
1:A:112:ASN:OD1	1:A:113:GLU:N	2.42	0.52
1:A:112:ASN:OD1	1:A:112:ASN:C	2.48	0.52
1:A:112:ASN:OD1	1:A:114:GLU:N	2.45	0.50
1:A:92:LEU:O	1:A:92:LEU:HD23	2.12	0.50
1:A:329:ARG:NH1	12:A:1008:HOH:O	2.42	0.49
1:A:366:CYS:SG	1:A:468:CYS:HB3	2.54	0.47
1:A:222:PRO:HA	1:A:225:HIS:CE1	2.50	0.47
1:A:105:ASP:N	1:A:105:ASP:OD1	2.48	0.46
1:A:348:HIS:HE1	12:A:1394:HOH:O	1.98	0.46
1:A:678:PRO:HB3	1:A:712:GLN:HB3	1.96	0.46
1:A:713:ARG:HH11	1:A:713:ARG:HG2	1.80	0.46
1:A:58:CYS:O	1:A:61:ARG:HB2	2.17	0.44
1:A:101:GLU:OE2	1:A:333:LYS:CE	2.65	0.44
1:A:570:ASP:CB	1:A:644:LEU:HD21	2.48	0.43
1:A:206:PRO:HB3	1:A:389:LEU:HD13	2.02	0.41

Continued on next page...

Continued from previous page...

Atom-1	Atom-2	Interatomic distance (Å)	Clash overlap (Å)
1:A:206:PRO:HD3	1:A:434:TYR:CE1	2.54	0.41
1:A:122:ASP:OD1	1:A:122:ASP:C	2.60	0.40
1:A:58:CYS:SG	1:A:86:CYS:HB2	2.61	0.40

There are no symmetry-related clashes.

5.3 Torsion angles [i](#)

5.3.1 Protein backbone [i](#)

In the following table, the Percentiles column shows the percent Ramachandran outliers of the chain as a percentile score with respect to all X-ray entries followed by that with respect to entries of similar resolution.

The Analysed column shows the number of residues for which the backbone conformation was analysed, and the total number of residues.

Mol	Chain	Analysed	Favoured	Allowed	Outliers	Percentiles
1	A	805/838 (96%)	755 (94%)	42 (5%)	8 (1%)	18 7

All (8) Ramachandran outliers are listed below:

Mol	Chain	Res	Type
1	A	109	GLU
1	A	465	SER
1	A	71	PRO
1	A	126	ARG
1	A	181	GLY
1	A	111	ARG
1	A	127	GLY
1	A	310	PRO

5.3.2 Protein sidechains [i](#)

In the following table, the Percentiles column shows the percent sidechain outliers of the chain as a percentile score with respect to all X-ray entries followed by that with respect to entries of similar resolution.

The Analysed column shows the number of residues for which the sidechain conformation was analysed, and the total number of residues.

Mol	Chain	Analysed	Rotameric	Outliers	Percentiles	
1	A	677/762 (89%)	657 (97%)	20 (3%)	46	36

All (20) residues with a non-rotameric sidechain are listed below:

Mol	Chain	Res	Type
1	A	52	THR
1	A	54	THR
1	A	80	LYS
1	A	90	ASP
1	A	96	THR
1	A	161	VAL
1	A	232	MET
1	A	246	ARG
1	A	272	THR
1	A	345	LEU
1	A	389	LEU
1	A	481	ASN
1	A	536	THR
1	A	542	THR
1	A	543	LEU
1	A	570	ASP
1	A	663	LEU
1	A	670	GLN
1	A	713	ARG
1	A	753	GLU

Some sidechains can be flipped to improve hydrogen bonding and reduce clashes. All (6) such sidechains are listed below:

Mol	Chain	Res	Type
1	A	118	HIS
1	A	337	GLN
1	A	348	HIS
1	A	374	ASN
1	A	670	GLN
1	A	802	ASN

5.3.3 RNA ⓘ

There are no RNA molecules in this entry.

5.4 Non-standard residues in protein, DNA, RNA chains [i](#)

There are no non-standard protein/DNA/RNA residues in this entry.

5.5 Carbohydrates [i](#)

There are no carbohydrates in this entry.

5.6 Ligand geometry [i](#)

Of 17 ligands modelled in this entry, 5 are monoatomic - leaving 12 for Mogul analysis.

In the following table, the Counts columns list the number of bonds (or angles) for which Mogul statistics could be retrieved, the number of bonds (or angles) that are observed in the model and the number of bonds (or angles) that are defined in the chemical component dictionary. The Link column lists molecule types, if any, to which the group is linked. The Z score for a bond length (or angle) is the number of standard deviations the observed value is removed from the expected value. A bond length (or angle) with $|Z| > 2$ is considered an outlier worth inspection. RMSZ is the root-mean-square of all Z scores of the bond lengths (or angles).

Mol	Type	Chain	Res	Link	Bond lengths			Bond angles		
					Counts	RMSZ	# $ Z > 2$	Counts	RMSZ	# $ Z > 2$
2	NAG	A	901	1	14,14,15	1.03	1 (7%)	15,19,21	1.87	3 (20%)
2	NAG	A	902	1,2	14,14,15	0.89	0	15,19,21	1.88	3 (20%)
2	NAG	A	903	3,2	14,14,15	1.06	1 (7%)	15,19,21	1.79	4 (26%)
3	BMA	A	904	2,4	11,11,12	0.83	0	13,15,17	1.48	3 (23%)
4	MAN	A	905	3,4	11,11,12	0.72	0	13,15,17	1.64	3 (23%)
4	MAN	A	906	4	11,11,12	1.17	1 (9%)	13,15,17	2.17	5 (38%)
4	MAN	A	907	4	11,11,12	1.06	0	13,15,17	1.40	3 (23%)
5	6XN	A	908	-	36,38,38	1.93	8 (22%)	43,54,54	1.08	2 (4%)
7	SO4	A	911	6	4,4,4	1.04	0	6,6,6	0.67	0
11	EDO	A	915	-	3,3,3	0.50	0	2,2,2	0.41	0
11	EDO	A	916	-	3,3,3	0.39	0	2,2,2	0.29	0
11	EDO	A	917	-	3,3,3	1.04	0	2,2,2	0.45	0

In the following table, the Chirals column lists the number of chiral outliers, the number of chiral centers analysed, the number of these observed in the model and the number defined in the chemical component dictionary. Similar counts are reported in the Torsion and Rings columns. '-' means no outliers of that kind were identified.

Mol	Type	Chain	Res	Link	Chirals	Torsions	Rings
2	NAG	A	901	1	-	0/6/23/26	0/1/1/1

Continued on next page...

Continued from previous page...

Mol	Type	Chain	Res	Link	Chirals	Torsions	Rings
2	NAG	A	902	1,2	-	0/6/23/26	0/1/1/1
2	NAG	A	903	3,2	-	0/6/23/26	0/1/1/1
3	BMA	A	904	2,4	-	0/2/19/22	0/1/1/1
4	MAN	A	905	3,4	-	0/2/19/22	0/1/1/1
4	MAN	A	906	4	-	0/2/19/22	0/1/1/1
4	MAN	A	907	4	-	0/2/19/22	0/1/1/1
5	6XN	A	908	-	-	0/22/22/22	0/4/4/4
7	SO4	A	911	6	-	0/0/0/0	0/0/0/0
11	EDO	A	915	-	-	0/1/1/1	0/0/0/0
11	EDO	A	916	-	-	0/1/1/1	0/0/0/0
11	EDO	A	917	-	-	0/1/1/1	0/0/0/0

All (11) bond length outliers are listed below:

Mol	Chain	Res	Type	Atoms	Z	Observed(Å)	Ideal(Å)
5	A	908	6XN	CAQ-CBE	-5.39	1.32	1.41
5	A	908	6XN	CAT-CBA	-4.81	1.40	1.51
5	A	908	6XN	CBC-CBG	-2.69	1.44	1.52
2	A	903	NAG	O5-C1	-2.63	1.39	1.43
5	A	908	6XN	CBE-CBF	-2.57	1.34	1.40
5	A	908	6XN	CAZ-CLA	-2.16	1.69	1.74
5	A	908	6XN	CAG-CAQ	2.47	1.42	1.36
5	A	908	6XN	CAH-NAU	2.99	1.38	1.32
2	A	901	NAG	C1-C2	3.08	1.56	1.52
4	A	906	MAN	C2-C3	3.40	1.57	1.52
5	A	908	6XN	CAT-NBH	4.56	1.57	1.48

All (26) bond angle outliers are listed below:

Mol	Chain	Res	Type	Atoms	Z	Observed(°)	Ideal(°)
2	A	901	NAG	O5-C1-C2	-5.08	104.40	111.47
2	A	902	NAG	O5-C1-C2	-4.53	105.17	111.47
2	A	903	NAG	O4-C4-C3	-4.33	100.93	110.36
4	A	906	MAN	O6-C6-C5	-3.78	98.61	111.34
2	A	903	NAG	O7-C7-C8	-3.06	116.48	122.06
3	A	904	BMA	O2-C2-C1	-2.43	104.24	109.18
2	A	902	NAG	O4-C4-C5	-2.32	103.44	109.28
5	A	908	6XN	CAG-CAH-NAU	-2.31	120.38	123.93
4	A	907	MAN	O2-C2-C3	-2.16	105.92	110.17
3	A	904	BMA	O6-C6-C5	-2.14	104.14	111.34
4	A	905	MAN	O2-C2-C1	-2.09	104.92	109.18
4	A	906	MAN	O2-C2-C3	2.02	114.14	110.17

Continued on next page...

Continued from previous page...

Mol	Chain	Res	Type	Atoms	Z	Observed(°)	Ideal(°)
2	A	903	NAG	C1-O5-C5	2.03	114.97	112.17
2	A	903	NAG	C8-C7-N2	2.12	119.94	116.11
2	A	901	NAG	C3-C4-C5	2.42	114.48	110.22
3	A	904	BMA	C1-C2-C3	2.49	112.81	109.65
4	A	907	MAN	O5-C1-C2	2.58	114.84	110.79
4	A	906	MAN	C1-O5-C5	2.63	115.80	112.17
2	A	901	NAG	O4-C4-C5	2.64	115.94	109.28
4	A	906	MAN	C1-C2-C3	2.66	113.02	109.65
4	A	907	MAN	O3-C3-C4	2.74	116.32	110.36
4	A	905	MAN	C1-O5-C5	2.76	115.97	112.17
5	A	908	6XN	CAP-CAJ-CAZ	2.99	122.42	119.24
2	A	902	NAG	C1-O5-C5	3.68	117.24	112.17
4	A	905	MAN	O3-C3-C2	3.88	117.08	110.02
4	A	906	MAN	O3-C3-C2	4.09	117.46	110.02

There are no chirality outliers.

There are no torsion outliers.

There are no ring outliers.

No monomer is involved in short contacts.

5.7 Other polymers [i](#)

There are no such residues in this entry.

5.8 Polymer linkage issues [i](#)

There are no chain breaks in this entry.

6 Fit of model and data [i](#)

6.1 Protein, DNA and RNA chains [i](#)

In the following table, the column labelled ‘#RSRZ> 2’ contains the number (and percentage) of RSRZ outliers, followed by percent RSRZ outliers for the chain as percentile scores relative to all X-ray entries and entries of similar resolution. The OWAB column contains the minimum, median, 95th percentile and maximum values of the occupancy-weighted average B-factor per residue. The column labelled ‘Q< 0.9’ lists the number of (and percentage) of residues with an average occupancy less than 0.9.

Mol	Chain	Analysed	<RSRZ>	#RSRZ>2	OWAB(Å ²)	Q<0.9
1	A	805/838 (96%)	-0.22	8 (0%) 82 84	17, 33, 67, 83	0

All (8) RSRZ outliers are listed below:

Mol	Chain	Res	Type	RSRZ
1	A	110	VAL	6.2
1	A	464	PRO	4.7
1	A	125	SER	3.3
1	A	55	SER	2.8
1	A	127	GLY	2.6
1	A	69	GLY	2.4
1	A	458	LEU	2.4
1	A	105	ASP	2.2

6.2 Non-standard residues in protein, DNA, RNA chains [i](#)

There are no non-standard protein/DNA/RNA residues in this entry.

6.3 Carbohydrates [i](#)

There are no carbohydrates in this entry.

6.4 Ligands [i](#)

In the following table, the Atoms column lists the number of modelled atoms in the group and the number defined in the chemical component dictionary. LLDF column lists the quality of electron density of the group with respect to its neighbouring residues in protein, DNA or RNA chains. The B-factors column lists the minimum, median, 95th percentile and maximum values of B factors of atoms in the group. The column labelled ‘Q< 0.9’ lists the number of atoms with occupancy less than 0.9.

Mol	Type	Chain	Res	Atoms	RSCC	RSR	LLDF	B-factors(\AA^2)	Q<0.9
4	MAN	A	906	11/12	0.90	0.25	40.58	41,45,49,52	0
11	EDO	A	917	4/4	0.87	0.17	4.58	47,55,57,57	0
11	EDO	A	916	4/4	0.95	0.10	3.65	33,36,40,45	0
8	CA	A	912	1/1	1.00	0.11	2.76	23,23,23,23	0
11	EDO	A	915	4/4	0.98	0.10	2.54	24,25,26,26	0
2	NAG	A	901	14/15	0.88	0.13	0.79	44,50,61,64	0
6	ZN	A	910	1/1	1.00	0.11	-0.07	21,21,21,21	0
5	6XN	A	908	35/35	0.96	0.08	-0.95	20,25,39,41	0
6	ZN	A	909	1/1	0.99	0.08	-1.01	31,31,31,31	0
2	NAG	A	902	14/15	0.98	0.07	-1.03	19,21,24,24	0
7	SO4	A	911	5/5	0.98	0.07	-1.41	24,26,32,33	0
10	K	A	914	1/1	0.98	0.07	-1.75	40,40,40,40	0
4	MAN	A	905	11/12	0.88	0.17	-	43,47,48,49	0
4	MAN	A	907	11/12	0.92	0.12	-	28,38,42,43	0
9	NA	A	913	1/1	0.99	0.12	-	28,28,28,28	0
3	BMA	A	904	11/12	0.87	0.15	-	41,45,51,56	0
2	NAG	A	903	14/15	0.94	0.09	-	27,32,41,44	0

6.5 Other polymers ⓘ

There are no such residues in this entry.