



# Full wwPDB X-ray Structure Validation Report ⓘ

Feb 13, 2017 – 08:11 am GMT

PDB ID : 3LLF  
Title : Crystal structure of the mutant S127P of orotidine 5'-monophosphate decarboxylase from Methanobacterium thermoautotrophicum complexed with 6-azauridine 5'-monophosphate  
Authors : Fedorov, A.A.; Fedorov, E.V.; Wood, B.M.; Gerlt, J.A.; Almo, S.C.  
Deposited on : 2010-01-29  
Resolution : 1.30 Å(reported)

This is a Full wwPDB X-ray Structure Validation Report for a publicly released PDB entry.

We welcome your comments at [validation@mail.wwpdb.org](mailto:validation@mail.wwpdb.org)

A user guide is available at

<http://wwpdb.org/validation/2016/XrayValidationReportHelp>

with specific help available everywhere you see the ⓘ symbol.

---

The following versions of software and data (see [references ⓘ](#)) were used in the production of this report:

MolProbity : 4.02b-467  
Mogul : 1.7.2 (RC1), CSD as538be (2017)  
Xtriage (Phenix) : 1.9-1692  
EDS : trunk28620  
Percentile statistics : 20161228.v01 (using entries in the PDB archive December 28th 2016)  
Refmac : 5.8.0135  
CCP4 : 6.5.0  
Ideal geometry (proteins) : Engh & Huber (2001)  
Ideal geometry (DNA, RNA) : Parkinson et al. (1996)  
Validation Pipeline (wwPDB-VP) : recalc28949

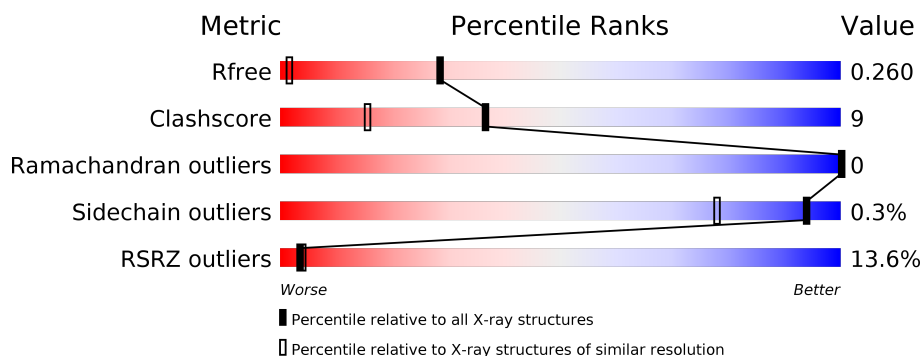
# 1 Overall quality at a glance

The following experimental techniques were used to determine the structure:

## *X-RAY DIFFRACTION*

The reported resolution of this entry is 1.30 Å.

Percentile scores (ranging between 0-100) for global validation metrics of the entry are shown in the following graphic. The table shows the number of entries on which the scores are based.



Metric	Whole archive (#Entries)	Similar resolution (#Entries, resolution range(Å))
$R_{free}$	100719	1131 (1.32-1.28)
Clashscore	112137	1185 (1.32-1.28)
Ramachandran outliers	110173	1138 (1.32-1.28)
Sidechain outliers	110143	1138 (1.32-1.28)
RSRZ outliers	101464	1133 (1.32-1.28)

The table below summarises the geometric issues observed across the polymeric chains and their fit to the electron density. The red, orange, yellow and green segments on the lower bar indicate the fraction of residues that contain outliers for  $\geq 3$ , 2, 1 and 0 types of geometric quality criteria. A grey segment represents the fraction of residues that are not modelled. The numeric value for each fraction is indicated below the corresponding segment, with a dot representing fractions  $\leq 5\%$ . The upper red bar (where present) indicates the fraction of residues that have poor fit to the electron density. The numeric value is given above the bar.

Mol	Chain	Length	Quality of chain
1	A	228	<div> <div>10%</div> <div> <div></div> <div>84%</div> <div>11%</div> <div>5%</div> </div> </div>
1	B	228	<div> <div>16%</div> <div> <div></div> <div>79%</div> <div>17%</div> <div>5%</div> </div> </div>

## 2 Entry composition [i](#)

There are 3 unique types of molecules in this entry. The entry contains 3642 atoms, of which 0 are hydrogens and 0 are deuteriums.

In the tables below, the ZeroOcc column contains the number of atoms modelled with zero occupancy, the AltConf column contains the number of residues with at least one atom in alternate conformation and the Trace column contains the number of residues modelled with at most 2 atoms.

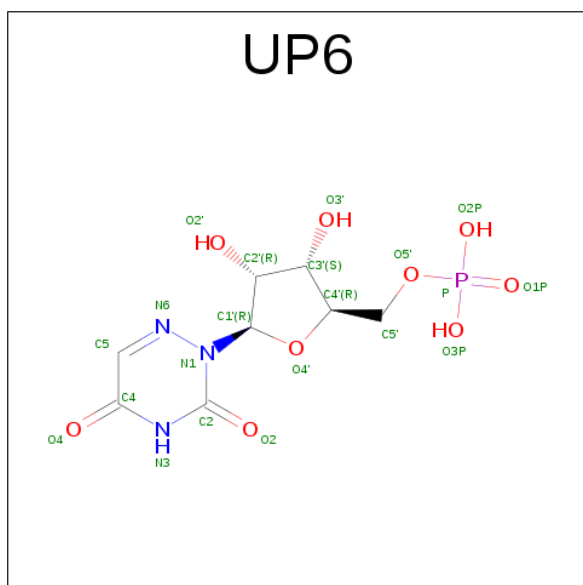
- Molecule 1 is a protein called Orotidine 5'-phosphate decarboxylase.

Mol	Chain	Residues	Atoms					ZeroOcc	AltConf	Trace
1	A	217	Total	C	N	O	S	0	0	0
			1646	1035	288	311	12			
1	B	217	Total	C	N	O	S	0	0	0
			1646	1035	288	311	12			

There are 4 discrepancies between the modelled and reference sequences:

Chain	Residue	Modelled	Actual	Comment	Reference
A	101	PRO	ARG	ENGINEERED	UNP O26232
A	127	PRO	SER	ENGINEERED	UNP O26232
B	101	PRO	ARG	ENGINEERED	UNP O26232
B	127	PRO	SER	ENGINEERED	UNP O26232

- Molecule 2 is 6-AZA URIDINE 5'-MONOPHOSPHATE (three-letter code: UP6) (formula:  $C_8H_{12}N_3O_9P$ ).



Mol	Chain	Residues	Atoms					ZeroOcc	AltConf
2	A	1	Total	C	N	O	P	0	0
			21	8	3	9	1		
2	B	1	Total	C	N	O	P	0	0
			21	8	3	9	1		

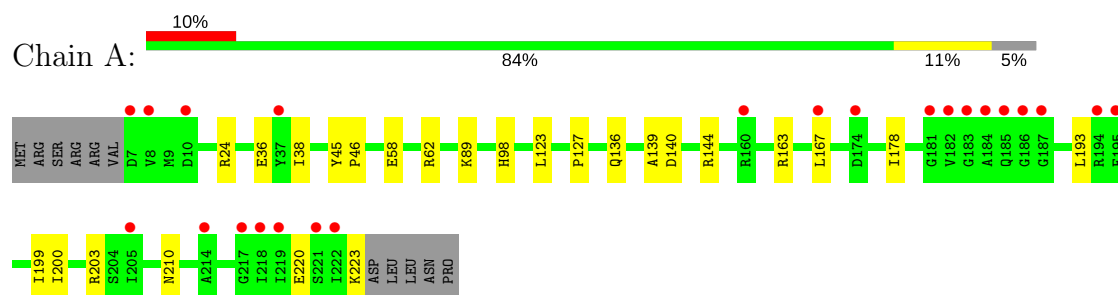
- Molecule 3 is water.

Mol	Chain	Residues	Atoms		ZeroOcc	AltConf
3	A	152	Total	O	0	0
			152	152		
3	B	156	Total	O	0	0
			156	156		

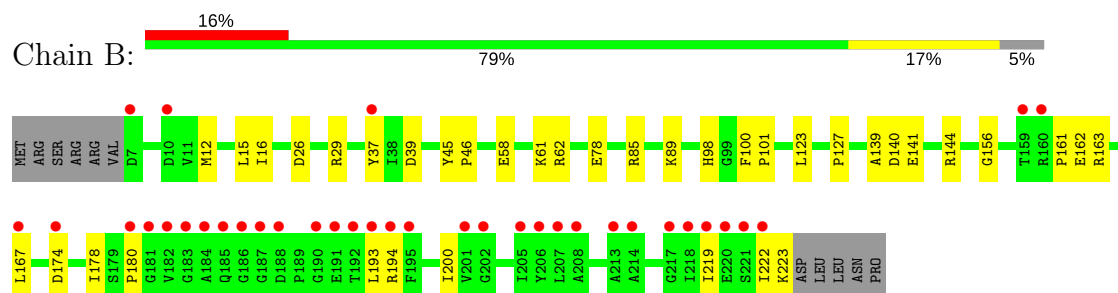
### 3 Residue-property plots [i](#)

These plots are drawn for all protein, RNA and DNA chains in the entry. The first graphic for a chain summarises the proportions of the various outlier classes displayed in the second graphic. The second graphic shows the sequence view annotated by issues in geometry and electron density. Residues are color-coded according to the number of geometric quality criteria for which they contain at least one outlier: green = 0, yellow = 1, orange = 2 and red = 3 or more. A red dot above a residue indicates a poor fit to the electron density ( $RSRZ > 2$ ). Stretches of 2 or more consecutive residues without any outlier are shown as a green connector. Residues present in the sample, but not in the model, are shown in grey.

#### • Molecule 1: Orotidine 5'-phosphate decarboxylase



#### • Molecule 1: Orotidine 5'-phosphate decarboxylase



## 4 Data and refinement statistics

Property	Value	Source
Space group	P 41	Depositor
Cell constants a, b, c, $\alpha$ , $\beta$ , $\gamma$	56.67Å 56.67Å 125.95Å 90.00° 90.00° 90.00°	Depositor
Resolution (Å)	24.85 – 1.30 33.81 – 1.30	Depositor EDS
% Data completeness (in resolution range)	93.6 (24.85-1.30) 93.8 (33.81-1.30)	Depositor EDS
$R_{merge}$	0.07	Depositor
$R_{sym}$	(Not available)	Depositor
$\langle I/\sigma(I) \rangle$ <sup>1</sup>	1.18 (at 1.30Å)	Xtriage
Refinement program	CNS 1.1	Depositor
R, $R_{free}$	0.234 , 0.258 0.235 , 0.260	Depositor DCC
$R_{free}$ test set	4566 reflections (5.01%)	DCC
Wilson B-factor (Å <sup>2</sup> )	17.4	Xtriage
Anisotropy	0.382	Xtriage
Bulk solvent $k_{sol}$ (e/Å <sup>3</sup> ), $B_{sol}$ (Å <sup>2</sup> )	0.37 , 36.5	EDS
L-test for twinning <sup>2</sup>	$\langle  L  \rangle = 0.50$ , $\langle L^2 \rangle = 0.34$	Xtriage
Estimated twinning fraction	0.487 for h,-k,-l	Xtriage
$F_o, F_c$ correlation	0.95	EDS
Total number of atoms	3642	wwPDB-VP
Average B, all atoms (Å <sup>2</sup> )	20.0	wwPDB-VP

Xtriage's analysis on translational NCS is as follows: *The largest off-origin peak in the Patterson function is 4.99% of the height of the origin peak. No significant pseudotranslation is detected.*

<sup>1</sup>Intensities estimated from amplitudes.

<sup>2</sup>Theoretical values of  $\langle |L| \rangle$ ,  $\langle L^2 \rangle$  for acentric reflections are 0.5, 0.333 respectively for untwinned datasets, and 0.375, 0.2 for perfectly twinned datasets.

## 5 Model quality

### 5.1 Standard geometry

Bond lengths and bond angles in the following residue types are not validated in this section: UP6

The Z score for a bond length (or angle) is the number of standard deviations the observed value is removed from the expected value. A bond length (or angle) with  $|Z| > 5$  is considered an outlier worth inspection. RMSZ is the root-mean-square of all Z scores of the bond lengths (or angles).

Mol	Chain	Bond lengths		Bond angles	
		RMSZ	$\# Z  > 5$	RMSZ	$\# Z  > 5$
1	A	0.28	0/1670	0.56	0/2254
1	B	0.28	0/1670	0.56	0/2254
All	All	0.28	0/3340	0.56	0/4508

There are no bond length outliers.

There are no bond angle outliers.

There are no chirality outliers.

There are no planarity outliers.

### 5.2 Too-close contacts

In the following table, the Non-H and H(model) columns list the number of non-hydrogen atoms and hydrogen atoms in the chain respectively. The H(added) column lists the number of hydrogen atoms added and optimized by MolProbity. The Clashes column lists the number of clashes within the asymmetric unit, whereas Symm-Clashes lists symmetry related clashes.

Mol	Chain	Non-H	H(model)	H(added)	Clashes	Symm-Clashes
1	A	1646	0	1660	20	0
1	B	1646	0	1660	41	0
2	A	21	0	10	1	0
2	B	21	0	10	1	0
3	A	152	0	0	4	0
3	B	156	0	0	7	0
All	All	3642	0	3340	60	0

The all-atom clashscore is defined as the number of clashes found per 1000 atoms (including hydrogen atoms). The all-atom clashscore for this structure is 9.

All (60) close contacts within the same asymmetric unit are listed below, sorted by their clash

magnitude.

Atom-1	Atom-2	Interatomic distance (Å)	Clash overlap (Å)
1:B:12:MET:CE	1:B:39:ASP:HB3	2.16	0.75
1:A:203:ARG:HD3	1:B:78:GLU:OE2	1.89	0.73
1:B:58:GLU:HG3	1:B:62:ARG:HE	1.56	0.70
1:B:58:GLU:CG	1:B:62:ARG:HE	2.09	0.65
1:B:12:MET:HE3	1:B:39:ASP:HB3	1.78	0.65
1:A:140:ASP:HB3	1:A:144:ARG:HH12	1.62	0.63
1:B:12:MET:HE2	1:B:39:ASP:HB3	1.81	0.62
1:B:219:ILE:HG22	1:B:223:LYS:HE2	1.84	0.59
1:B:85:ARG:HB3	3:B:380:HOH:O	2.04	0.58
1:B:219:ILE:O	1:B:223:LYS:HG3	2.03	0.58
1:B:141:GLU:HG3	3:B:316:HOH:O	2.04	0.57
1:B:85:ARG:HG2	1:B:89:LYS:HE3	1.87	0.57
1:B:193:LEU:HD12	1:B:222:ILE:HG12	1.87	0.55
1:A:139:ALA:HB3	1:A:163:ARG:HH21	1.70	0.55
1:B:15:LEU:HD23	1:B:16:ILE:N	2.22	0.55
1:B:219:ILE:HA	1:B:222:ILE:HG22	1.90	0.53
1:A:139:ALA:HB3	1:A:163:ARG:NH2	2.25	0.52
1:B:26:ASP:HA	1:B:29:ARG:NH1	2.23	0.52
1:B:161:PRO:HG2	1:B:162:GLU:OE2	2.08	0.52
1:B:139:ALA:HB3	1:B:163:ARG:HH21	1.75	0.51
1:A:140:ASP:HB3	1:A:144:ARG:NH1	2.26	0.51
1:A:38:ILE:C	1:A:38:ILE:HD12	2.31	0.51
1:B:127:PRO:CD	2:B:229:UP6:HN3	2.24	0.50
1:B:193:LEU:HD12	1:B:222:ILE:CG1	2.41	0.50
1:B:61:LYS:HE3	3:B:348:HOH:O	2.11	0.49
1:B:89:LYS:HD2	3:B:323:HOH:O	2.12	0.49
1:B:193:LEU:HD12	1:B:222:ILE:HD11	1.94	0.49
1:B:174:ASP:HB3	3:B:371:HOH:O	2.12	0.49
1:A:127:PRO:CD	2:A:229:UP6:HN3	2.25	0.49
1:B:194:ARG:HH11	1:B:194:ARG:HG2	1.77	0.49
1:B:15:LEU:HD23	1:B:15:LEU:C	2.33	0.49
1:A:167:LEU:HD22	3:A:322:HOH:O	2.13	0.48
1:A:136:GLN:HB2	3:A:284:HOH:O	2.12	0.48
1:A:89:LYS:HD2	3:A:305:HOH:O	2.14	0.47
1:B:219:ILE:O	1:B:222:ILE:HG22	2.14	0.47
1:B:193:LEU:HD12	1:B:222:ILE:CD1	2.45	0.47
1:B:139:ALA:HB3	1:B:163:ARG:NH2	2.28	0.47
1:A:24:ARG:HD2	1:A:58:GLU:OE2	2.16	0.46
1:B:222:ILE:HG13	1:B:222:ILE:O	2.15	0.46
1:A:58:GLU:CG	1:A:62:ARG:HE	2.30	0.44
1:B:140:ASP:O	1:B:144:ARG:HG3	2.17	0.44

*Continued on next page...*



Continued from previous page...

Atom-1	Atom-2	Interatomic distance (Å)	Clash overlap (Å)
1:A:220:GLU:HA	1:A:223:LYS:HG3	2.01	0.43
1:A:193:LEU:CD2	1:A:199:ILE:HG23	2.49	0.43
1:B:26:ASP:HA	1:B:29:ARG:HH12	1.83	0.42
1:B:98:HIS:CE1	1:B:123:LEU:HD23	2.55	0.42
1:A:36:GLU:HG2	3:A:294:HOH:O	2.18	0.42
1:B:45:TYR:N	1:B:46:PRO:CD	2.83	0.42
1:A:139:ALA:CB	1:A:163:ARG:HH21	2.32	0.42
1:A:178:ILE:HD12	1:A:200:ILE:HD11	2.01	0.42
1:B:174:ASP:CG	3:B:326:HOH:O	2.58	0.42
1:B:156:GLY:O	1:B:180:PRO:HD2	2.20	0.41
1:B:178:ILE:HD12	1:B:200:ILE:HD11	2.03	0.41
1:A:193:LEU:HD21	1:A:199:ILE:HG23	2.03	0.41
1:B:144:ARG:HH21	1:B:144:ARG:HG2	1.85	0.41
1:B:37:TYR:HB3	1:B:219:ILE:HD11	2.02	0.41
1:A:98:HIS:CE1	1:A:123:LEU:HD23	2.56	0.41
1:A:45:TYR:N	1:A:46:PRO:CD	2.84	0.41
1:B:100:PHE:CG	1:B:101:PRO:HD3	2.56	0.40
1:B:167:LEU:HD22	3:B:320:HOH:O	2.22	0.40
1:B:141:GLU:HA	1:B:141:GLU:OE2	2.22	0.40

There are no symmetry-related clashes.

## 5.3 Torsion angles

### 5.3.1 Protein backbone

In the following table, the Percentiles column shows the percent Ramachandran outliers of the chain as a percentile score with respect to all X-ray entries followed by that with respect to entries of similar resolution.

The Analysed column shows the number of residues for which the backbone conformation was analysed, and the total number of residues.

Mol	Chain	Analysed	Favoured	Allowed	Outliers	Percentiles	
1	A	215/228 (94%)	210 (98%)	5 (2%)	0	100	100
1	B	215/228 (94%)	209 (97%)	6 (3%)	0	100	100
All	All	430/456 (94%)	419 (97%)	11 (3%)	0	100	100

There are no Ramachandran outliers to report.

### 5.3.2 Protein sidechains [i](#)

In the following table, the Percentiles column shows the percent sidechain outliers of the chain as a percentile score with respect to all X-ray entries followed by that with respect to entries of similar resolution.

The Analysed column shows the number of residues for which the sidechain conformation was analysed, and the total number of residues.

Mol	Chain	Analysed	Rotameric	Outliers	Percentiles	
1	A	171/182 (94%)	170 (99%)	1 (1%)	89	64
1	B	171/182 (94%)	171 (100%)	0	100	100
All	All	342/364 (94%)	341 (100%)	1 (0%)	94	78

All (1) residues with a non-rotameric sidechain are listed below:

Mol	Chain	Res	Type
1	A	210	ASN

Some sidechains can be flipped to improve hydrogen bonding and reduce clashes. All (1) such sidechains are listed below:

Mol	Chain	Res	Type
1	A	210	ASN

### 5.3.3 RNA [i](#)

There are no RNA molecules in this entry.

## 5.4 Non-standard residues in protein, DNA, RNA chains [i](#)

There are no non-standard protein/DNA/RNA residues in this entry.

## 5.5 Carbohydrates [i](#)

There are no carbohydrates in this entry.

## 5.6 Ligand geometry [i](#)

2 ligands are modelled in this entry.

In the following table, the Counts columns list the number of bonds (or angles) for which Mogul statistics could be retrieved, the number of bonds (or angles) that are observed in the model and the number of bonds (or angles) that are defined in the chemical component dictionary. The Link column lists molecule types, if any, to which the group is linked. The Z score for a bond length (or angle) is the number of standard deviations the observed value is removed from the expected value. A bond length (or angle) with  $|Z| > 2$  is considered an outlier worth inspection. RMSZ is the root-mean-square of all Z scores of the bond lengths (or angles).

Mol	Type	Chain	Res	Link	Bond lengths			Bond angles		
					Counts	RMSZ	# Z  > 2	Counts	RMSZ	# Z  > 2
2	UP6	A	229	-	21,22,22	2.49	3 (14%)	31,33,33	2.87	5 (16%)
2	UP6	B	229	-	21,22,22	2.47	3 (14%)	31,33,33	2.88	5 (16%)

In the following table, the Chirals column lists the number of chiral outliers, the number of chiral centers analysed, the number of these observed in the model and the number defined in the chemical component dictionary. Similar counts are reported in the Torsion and Rings columns. '-' means no outliers of that kind were identified.

Mol	Type	Chain	Res	Link	Chirals	Torsions	Rings
2	UP6	A	229	-	-	0/10/26/26	0/1/2/2
2	UP6	B	229	-	-	0/10/26/26	0/1/2/2

All (6) bond length outliers are listed below:

Mol	Chain	Res	Type	Atoms	Z	Observed(Å)	Ideal(Å)
2	A	229	UP6	C5-C4	-9.78	1.43	1.50
2	B	229	UP6	C5-C4	-9.60	1.43	1.50
2	A	229	UP6	C4-N3	2.36	1.41	1.37
2	B	229	UP6	C4-N3	2.47	1.41	1.37
2	A	229	UP6	C2-N1	4.26	1.40	1.37
2	B	229	UP6	C2-N1	4.41	1.41	1.37

All (10) bond angle outliers are listed below:

Mol	Chain	Res	Type	Atoms	Z	Observed(°)	Ideal(°)
2	A	229	UP6	C1'-N1-C2	2.03	122.84	119.66
2	B	229	UP6	C1'-N1-C2	2.07	122.91	119.66
2	B	229	UP6	C2'-C1'-N1	6.37	123.22	113.46
2	A	229	UP6	C2'-C1'-N1	6.44	123.34	113.46
2	A	229	UP6	C4-C5-N6	7.14	119.76	114.66
2	B	229	UP6	C4-C5-N6	7.27	119.85	114.66
2	B	229	UP6	O4-C4-C5	8.04	125.06	118.69
2	A	229	UP6	O4-C4-C5	8.07	125.08	118.69
2	A	229	UP6	C5-N6-N1	8.92	121.94	110.27

*Continued on next page...*

*Continued from previous page...*

Mol	Chain	Res	Type	Atoms	Z	Observed(°)	Ideal(°)
2	B	229	UP6	C5-N6-N1	8.93	121.96	110.27

There are no chirality outliers.

There are no torsion outliers.

There are no ring outliers.

2 monomers are involved in 2 short contacts:

Mol	Chain	Res	Type	Clashes	Symm-Clashes
2	A	229	UP6	1	0
2	B	229	UP6	1	0

## 5.7 Other polymers [i](#)

There are no such residues in this entry.

## 5.8 Polymer linkage issues [i](#)

There are no chain breaks in this entry.

## 6 Fit of model and data

### 6.1 Protein, DNA and RNA chains

In the following table, the column labelled ‘#RSRZ> 2’ contains the number (and percentage) of RSRZ outliers, followed by percent RSRZ outliers for the chain as percentile scores relative to all X-ray entries and entries of similar resolution. The OWAB column contains the minimum, median, 95<sup>th</sup> percentile and maximum values of the occupancy-weighted average B-factor per residue. The column labelled ‘Q< 0.9’ lists the number of (and percentage) of residues with an average occupancy less than 0.9.

Mol	Chain	Analysed	<RSRZ>	#RSRZ>2	OWAB(Å <sup>2</sup> )	Q<0.9
1	A	217/228 (95%)	0.60	23 (10%) 7 6	11, 18, 29, 44	0
1	B	217/228 (95%)	0.83	36 (16%) 2 2	11, 18, 30, 48	0
All	All	434/456 (95%)	0.71	59 (13%) 3 4	11, 18, 30, 48	0

All (59) RSRZ outliers are listed below:

Mol	Chain	Res	Type	RSRZ
1	B	207	LEU	9.4
1	B	222	ILE	7.3
1	B	194	ARG	6.0
1	B	184	ALA	5.2
1	B	183	GLY	5.1
1	A	184	ALA	4.8
1	B	182	VAL	4.7
1	B	7	ASP	4.3
1	A	194	ARG	4.2
1	A	186	GLY	4.2
1	A	7	ASP	4.1
1	B	221	SER	4.1
1	B	219	ILE	4.1
1	B	37	TYR	4.0
1	A	182	VAL	4.0
1	B	186	GLY	4.0
1	B	218	ILE	3.9
1	B	185	GLN	3.8
1	B	159	THR	3.7
1	B	181	GLY	3.6
1	B	205	ILE	3.6
1	A	8	VAL	3.5
1	B	201	VAL	3.4
1	B	160	ARG	3.3

*Continued on next page...*

*Continued from previous page...*

Mol	Chain	Res	Type	RSRZ
1	B	214	ALA	3.3
1	A	181	GLY	3.3
1	A	183	GLY	3.3
1	B	217	GLY	3.2
1	A	195	PHE	3.2
1	B	195	PHE	3.2
1	A	219	ILE	3.1
1	A	222	ILE	3.1
1	A	37	TYR	3.0
1	A	187	GLY	3.0
1	A	217	GLY	2.9
1	A	185	GLN	2.9
1	A	10	ASP	2.8
1	A	221	SER	2.8
1	B	191	GLU	2.8
1	B	187	GLY	2.8
1	B	190	GLY	2.8
1	B	208	ALA	2.7
1	B	206	TYR	2.7
1	B	213	ALA	2.6
1	A	160	ARG	2.6
1	A	167	LEU	2.6
1	B	10	ASP	2.5
1	B	202	GLY	2.5
1	B	192	THR	2.5
1	A	174	ASP	2.4
1	B	220	GLU	2.4
1	B	188	ASP	2.3
1	B	174	ASP	2.3
1	B	193	LEU	2.2
1	A	205	ILE	2.2
1	A	214	ALA	2.2
1	B	167	LEU	2.1
1	A	218	ILE	2.1
1	B	180	PRO	2.1

## 6.2 Non-standard residues in protein, DNA, RNA chains ⓘ

There are no non-standard protein/DNA/RNA residues in this entry.

### 6.3 Carbohydrates [i](#)

There are no carbohydrates in this entry.

### 6.4 Ligands [i](#)

In the following table, the Atoms column lists the number of modelled atoms in the group and the number defined in the chemical component dictionary. LLDF column lists the quality of electron density of the group with respect to its neighbouring residues in protein, DNA or RNA chains. The B-factors column lists the minimum, median, 95<sup>th</sup> percentile and maximum values of B factors of atoms in the group. The column labelled 'Q< 0.9' lists the number of atoms with occupancy less than 0.9.

Mol	Type	Chain	Res	Atoms	RSCC	RSR	LLDF	B-factors( $\text{\AA}^2$ )	Q<0.9
2	UP6	B	229	21/21	0.80	0.26	1.82	20,21,22,22	0
2	UP6	A	229	21/21	0.85	0.22	1.69	19,20,21,23	0

### 6.5 Other polymers [i](#)

There are no such residues in this entry.