



Full wwPDB X-ray Structure Validation Report ⓘ

Feb 12, 2017 – 11:51 pm GMT

PDB ID : 3LQ8
Title : Structure of the kinase domain of c-Met bound to XL880 (GSK1363089)
Authors : Loughheed, J.C.; Stout, T.J.
Deposited on : 2010-02-08
Resolution : 2.02 Å(reported)

This is a Full wwPDB X-ray Structure Validation Report for a publicly released PDB entry.

We welcome your comments at validation@mail.wwpdb.org

A user guide is available at

<http://wwpdb.org/validation/2016/XrayValidationReportHelp>

with specific help available everywhere you see the ⓘ symbol.

The following versions of software and data (see [references ⓘ](#)) were used in the production of this report:

MolProbity : 4.02b-467
Mogul : 1.7.2 (RC1), CSD as538be (2017)
Xtriage (Phenix) : 1.9-1692
EDS : trunk28620
Percentile statistics : 20161228.v01 (using entries in the PDB archive December 28th 2016)
Refmac : 5.8.0135
CCP4 : 6.5.0
Ideal geometry (proteins) : Engh & Huber (2001)
Ideal geometry (DNA, RNA) : Parkinson et al. (1996)
Validation Pipeline (wwPDB-VP) : recalc28949

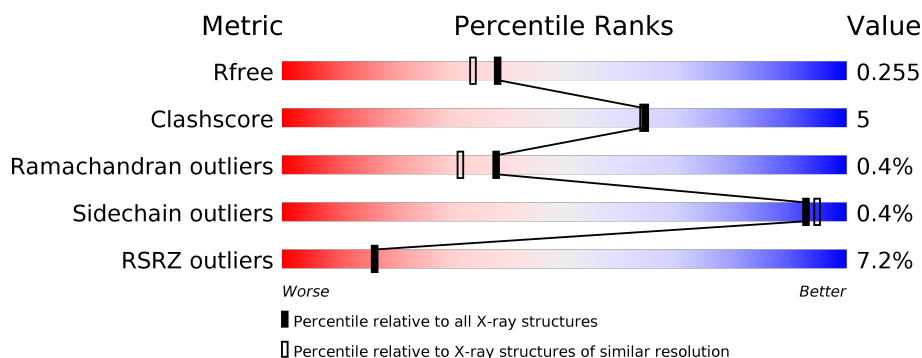
1 Overall quality at a glance

The following experimental techniques were used to determine the structure:

X-RAY DIFFRACTION

The reported resolution of this entry is 2.02 Å.

Percentile scores (ranging between 0-100) for global validation metrics of the entry are shown in the following graphic. The table shows the number of entries on which the scores are based.



Metric	Whole archive (#Entries)	Similar resolution (#Entries, resolution range(Å))
R_{free}	100719	8396 (2.04-2.00)
Clashscore	112137	9678 (2.04-2.00)
Ramachandran outliers	110173	9566 (2.04-2.00)
Sidechain outliers	110143	9565 (2.04-2.00)
RSRZ outliers	101464	8490 (2.04-2.00)

The table below summarises the geometric issues observed across the polymeric chains and their fit to the electron density. The red, orange, yellow and green segments on the lower bar indicate the fraction of residues that contain outliers for ≥ 3 , 2, 1 and 0 types of geometric quality criteria. A grey segment represents the fraction of residues that are not modelled. The numeric value for each fraction is indicated below the corresponding segment, with a dot representing fractions $\leq 5\%$. The upper red bar (where present) indicates the fraction of residues that have poor fit to the electron density. The numeric value is given above the bar.

Mol	Chain	Length	Quality of chain
1	A	302	<div> <div>7%</div> <div>81%</div> <div>11%</div> <div>8%</div> </div>

2 Entry composition [i](#)

There are 3 unique types of molecules in this entry. The entry contains 2435 atoms, of which 0 are hydrogens and 0 are deuteriums.

In the tables below, the ZeroOcc column contains the number of atoms modelled with zero occupancy, the AltConf column contains the number of residues with at least one atom in alternate conformation and the Trace column contains the number of residues modelled with at most 2 atoms.

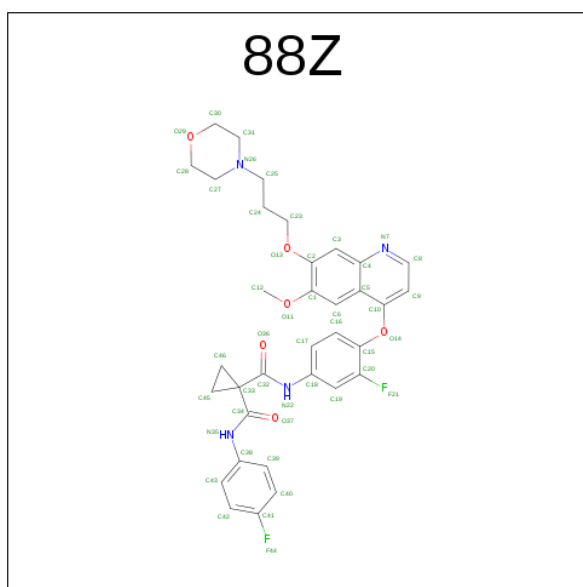
- Molecule 1 is a protein called Hepatocyte growth factor receptor.

Mol	Chain	Residues	Atoms					ZeroOcc	AltConf	Trace
			Total	C	N	O	S			
1	A	278	2222	1440	375	392	15	0	2	0

There are 4 discrepancies between the modelled and reference sequences:

Chain	Residue	Modelled	Actual	Comment	Reference
A	1049	GLY	-	EXPRESSION TAG	UNP P08581
A	1050	SER	-	EXPRESSION TAG	UNP P08581
A	1349	GLU	-	EXPRESSION TAG	UNP P08581
A	1350	PHE	-	EXPRESSION TAG	UNP P08581

- Molecule 2 is N-(3-FLUORO-4-{[6-METHOXY-7-(3-MORPHOLIN-4-YLPROPOXY)QUINOLIN-4-YL]OXY}PHENYL)-N'-(4-FLUOROPHENYL)CYCLOPROPANE-1,1-DICARBONAMIDE (three-letter code: 88Z) (formula: C₃₄H₃₄F₂N₄O₆).



Mol	Chain	Residues	Atoms					ZeroOcc	AltConf
2	A	1	Total	C	F	N	O	0	0
			46	34	2	4	6		

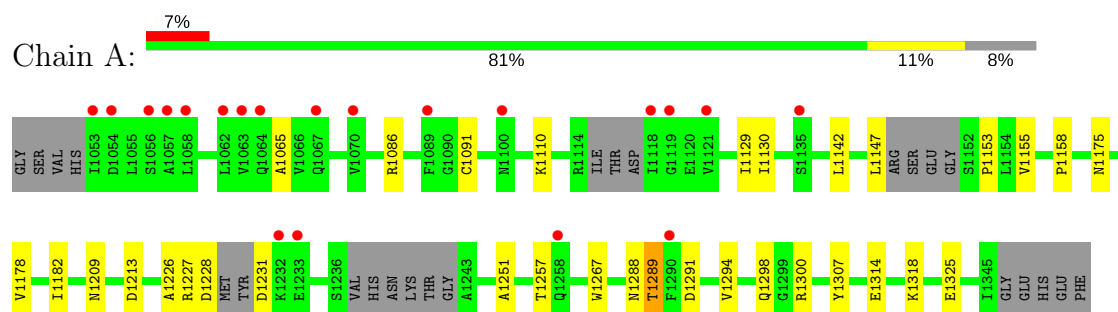
- Molecule 3 is water.

Mol	Chain	Residues	Atoms		ZeroOcc	AltConf
3	A	167	Total	O	0	0
			167	167		

3 Residue-property plots [i](#)

These plots are drawn for all protein, RNA and DNA chains in the entry. The first graphic for a chain summarises the proportions of the various outlier classes displayed in the second graphic. The second graphic shows the sequence view annotated by issues in geometry and electron density. Residues are color-coded according to the number of geometric quality criteria for which they contain at least one outlier: green = 0, yellow = 1, orange = 2 and red = 3 or more. A red dot above a residue indicates a poor fit to the electron density ($RSRZ > 2$). Stretches of 2 or more consecutive residues without any outlier are shown as a green connector. Residues present in the sample, but not in the model, are shown in grey.

- Molecule 1: Hepatocyte growth factor receptor



4 Data and refinement statistics

Property	Value	Source
Space group	P 1 21 1	Depositor
Cell constants a, b, c, α , β , γ	37.92Å 43.02Å 89.62Å 90.00° 91.61° 90.00°	Depositor
Resolution (Å)	35.27 – 2.02 35.27 – 2.02	Depositor EDS
% Data completeness (in resolution range)	99.9 (35.27-2.02) 99.9 (35.27-2.02)	Depositor EDS
R_{merge}	0.05	Depositor
R_{sym}	0.05	Depositor
$\langle I/\sigma(I) \rangle$ ¹	2.53 (at 2.01Å)	Xtriage
Refinement program	REFMAC 5.2.0019	Depositor
R, R_{free}	0.191 , 0.252 0.187 , 0.255	Depositor DCC
R_{free} test set	983 reflections (5.39%)	DCC
Wilson B-factor (Å ²)	24.4	Xtriage
Anisotropy	0.060	Xtriage
Bulk solvent k_{sol} (e/Å ³), B_{sol} (Å ²)	0.33 , 61.1	EDS
L-test for twinning ²	$\langle L \rangle = 0.49$, $\langle L^2 \rangle = 0.32$	Xtriage
Estimated twinning fraction	0.043 for h,-k,-l	Xtriage
F_o, F_c correlation	0.95	EDS
Total number of atoms	2435	wwPDB-VP
Average B, all atoms (Å ²)	25.0	wwPDB-VP

Xtriage's analysis on translational NCS is as follows: *The largest off-origin peak in the Patterson function is 11.29% of the height of the origin peak. No significant pseudotranslation is detected.*

¹Intensities estimated from amplitudes.

²Theoretical values of $\langle |L| \rangle$, $\langle L^2 \rangle$ for acentric reflections are 0.5, 0.333 respectively for untwinned datasets, and 0.375, 0.2 for perfectly twinned datasets.

5 Model quality [i](#)

5.1 Standard geometry [i](#)

Bond lengths and bond angles in the following residue types are not validated in this section: 88Z

The Z score for a bond length (or angle) is the number of standard deviations the observed value is removed from the expected value. A bond length (or angle) with $|Z| > 5$ is considered an outlier worth inspection. RMSZ is the root-mean-square of all Z scores of the bond lengths (or angles).

Mol	Chain	Bond lengths		Bond angles	
		RMSZ	$\# Z > 5$	RMSZ	$\# Z > 5$
1	A	0.92	0/2280	0.84	2/3083 (0.1%)

There are no bond length outliers.

All (2) bond angle outliers are listed below:

Mol	Chain	Res	Type	Atoms	Z	Observed(°)	Ideal(°)
1	A	1300	ARG	NE-CZ-NH2	-5.64	117.48	120.30
1	A	1213	ASP	CB-CG-OD1	5.55	123.30	118.30

There are no chirality outliers.

There are no planarity outliers.

5.2 Too-close contacts [i](#)

In the following table, the Non-H and H(model) columns list the number of non-hydrogen atoms and hydrogen atoms in the chain respectively. The H(added) column lists the number of hydrogen atoms added and optimized by MolProbity. The Clashes column lists the number of clashes within the asymmetric unit, whereas Symm-Clashes lists symmetry related clashes.

Mol	Chain	Non-H	H(model)	H(added)	Clashes	Symm-Clashes
1	A	2222	0	2253	21	1
2	A	46	0	34	1	0
3	A	167	0	0	2	1
All	All	2435	0	2287	21	2

The all-atom clashscore is defined as the number of clashes found per 1000 atoms (including hydrogen atoms). The all-atom clashscore for this structure is 5.

All (21) close contacts within the same asymmetric unit are listed below, sorted by their clash

magnitude.

Atom-1	Atom-2	Interatomic distance (Å)	Clash overlap (Å)
1:A:1231:ASP:OD1	3:A:150:HOH:O	2.00	0.80
1:A:1130:ILE:O	3:A:152:HOH:O	2.10	0.69
1:A:1086:ARG:HG3	1:A:1091[A]:CYS:HB3	1.75	0.68
1:A:1228:ASP:OD1	1:A:1231:ASP:HB3	1.96	0.63
1:A:1228:ASP:OD1	1:A:1231:ASP:CB	2.46	0.63
1:A:1294:VAL:O	1:A:1298:GLN:HG3	2.00	0.62
1:A:1257:THR:O	1:A:1257:THR:HG22	2.01	0.59
1:A:1227:ARG:NH1	1:A:1231:ASP:OD2	2.36	0.58
1:A:1314:GLU:O	1:A:1318:LYS:HG3	2.05	0.57
1:A:1288:ASN:O	1:A:1289:THR:C	2.49	0.51
1:A:1209:ASN:OD1	1:A:1227:ARG:NH2	2.51	0.43
1:A:1267:TRP:C	1:A:1267:TRP:CD1	2.91	0.43
1:A:1158:PRO:O	2:A:1:88Z:H8	2.19	0.43
1:A:1142:LEU:CD1	1:A:1155:VAL:HG13	2.48	0.42
1:A:1110:LYS:HE3	1:A:1226:ALA:HB2	2.01	0.42
1:A:1178:VAL:O	1:A:1182:ILE:HG13	2.19	0.42
1:A:1065:ALA:HB1	1:A:1129:ILE:HD12	2.01	0.42
1:A:1288:ASN:HB2	1:A:1291:ASP:OD2	2.19	0.42
1:A:1251:ALA:HA	1:A:1267:TRP:CD2	2.55	0.41
1:A:1147:LEU:HD23	1:A:1153:PRO:HB3	2.02	0.41
1:A:1228:ASP:OD1	1:A:1231:ASP:HB2	2.18	0.41

All (2) symmetry-related close contacts are listed below. The label for Atom-2 includes the symmetry operator and encoded unit-cell translations to be applied.

Atom-1	Atom-2	Interatomic distance (Å)	Clash overlap (Å)
1:A:1307:TYR:OH	1:A:1325:GLU:OE1[1_455]	2.07	0.13
3:A:40:HOH:O	3:A:138:HOH:O[2_555]	2.19	0.01

5.3 Torsion angles ⓘ

5.3.1 Protein backbone ⓘ

In the following table, the Percentiles column shows the percent Ramachandran outliers of the chain as a percentile score with respect to all X-ray entries followed by that with respect to entries of similar resolution.

The Analysed column shows the number of residues for which the backbone conformation was analysed, and the total number of residues.

Mol	Chain	Analysed	Favoured	Allowed	Outliers	Percentiles	
1	A	270/302 (89%)	264 (98%)	5 (2%)	1 (0%)	38	31

All (1) Ramachandran outliers are listed below:

Mol	Chain	Res	Type
1	A	1289	THR

5.3.2 Protein sidechains [i](#)

In the following table, the Percentiles column shows the percent sidechain outliers of the chain as a percentile score with respect to all X-ray entries followed by that with respect to entries of similar resolution.

The Analysed column shows the number of residues for which the sidechain conformation was analysed, and the total number of residues.

Mol	Chain	Analysed	Rotameric	Outliers	Percentiles	
1	A	249/267 (93%)	248 (100%)	1 (0%)	93	95

All (1) residues with a non-rotameric sidechain are listed below:

Mol	Chain	Res	Type
1	A	1175	ASN

Some sidechains can be flipped to improve hydrogen bonding and reduce clashes. There are no such sidechains identified.

5.3.3 RNA [i](#)

There are no RNA molecules in this entry.

5.4 Non-standard residues in protein, DNA, RNA chains [i](#)

There are no non-standard protein/DNA/RNA residues in this entry.

5.5 Carbohydrates [i](#)

There are no carbohydrates in this entry.

5.6 Ligand geometry

1 ligand is modelled in this entry.

In the following table, the Counts columns list the number of bonds (or angles) for which Mogul statistics could be retrieved, the number of bonds (or angles) that are observed in the model and the number of bonds (or angles) that are defined in the chemical component dictionary. The Link column lists molecule types, if any, to which the group is linked. The Z score for a bond length (or angle) is the number of standard deviations the observed value is removed from the expected value. A bond length (or angle) with $|Z| > 2$ is considered an outlier worth inspection. RMSZ is the root-mean-square of all Z scores of the bond lengths (or angles).

Mol	Type	Chain	Res	Link	Bond lengths			Bond angles		
					Counts	RMSZ	# $ Z > 2$	Counts	RMSZ	# $ Z > 2$
2	88Z	A	1	-	51,51,51	1.51	7 (13%)	64,72,72	2.11	20 (31%)

In the following table, the Chirals column lists the number of chiral outliers, the number of chiral centers analysed, the number of these observed in the model and the number defined in the chemical component dictionary. Similar counts are reported in the Torsion and Rings columns. '-' means no outliers of that kind were identified.

Mol	Type	Chain	Res	Link	Chirals	Torsions	Rings
2	88Z	A	1	-	-	0/33/45/45	0/5/6/6

All (7) bond length outliers are listed below:

Mol	Chain	Res	Type	Atoms	Z	Observed(Å)	Ideal(Å)
2	A	1	88Z	C18-N22	-3.07	1.35	1.41
2	A	1	88Z	C3-C2	2.21	1.40	1.36
2	A	1	88Z	C6-C1	2.27	1.40	1.36
2	A	1	88Z	C40-C41	2.55	1.42	1.37
2	A	1	88Z	C1-C2	3.33	1.47	1.40
2	A	1	88Z	C15-C20	3.85	1.47	1.38
2	A	1	88Z	C5-C4	4.39	1.49	1.42

All (20) bond angle outliers are listed below:

Mol	Chain	Res	Type	Atoms	Z	Observed(°)	Ideal(°)
2	A	1	88Z	C30-C31-N26	-6.43	101.10	110.11
2	A	1	88Z	C9-C8-N7	-3.08	119.80	124.58
2	A	1	88Z	C38-N35-C34	-2.98	121.41	126.81
2	A	1	88Z	C5-C4-N7	-2.81	119.88	122.89
2	A	1	88Z	O29-C28-C27	-2.78	105.60	111.83
2	A	1	88Z	O29-C30-C31	-2.45	106.34	111.83
2	A	1	88Z	O36-C32-C33	-2.19	117.46	121.17

Continued on next page...

Continued from previous page...

Mol	Chain	Res	Type	Atoms	Z	Observed(°)	Ideal(°)
2	A	1	88Z	C25-C24-C23	-2.12	105.00	113.14
2	A	1	88Z	O37-C34-N35	-2.10	118.03	123.14
2	A	1	88Z	C46-C33-C45	2.08	59.31	57.43
2	A	1	88Z	C8-C9-C10	2.24	120.84	118.04
2	A	1	88Z	C23-O13-C2	2.59	124.00	117.70
2	A	1	88Z	F21-C20-C19	3.05	124.40	118.63
2	A	1	88Z	C43-C42-C41	3.11	121.62	118.35
2	A	1	88Z	C6-C5-C4	3.28	122.96	118.92
2	A	1	88Z	C3-C4-N7	3.43	121.64	117.97
2	A	1	88Z	C25-N26-C31	3.91	121.28	111.26
2	A	1	88Z	C8-N7-C4	4.23	123.60	116.89
2	A	1	88Z	C31-N26-C27	4.82	119.80	108.87
2	A	1	88Z	C12-O11-C1	4.86	124.52	117.54

There are no chirality outliers.

There are no torsion outliers.

There are no ring outliers.

1 monomer is involved in 1 short contact:

Mol	Chain	Res	Type	Clashes	Symm-Clashes
2	A	1	88Z	1	0

5.7 Other polymers [i](#)

There are no such residues in this entry.

5.8 Polymer linkage issues [i](#)

There are no chain breaks in this entry.

6 Fit of model and data [i](#)

6.1 Protein, DNA and RNA chains [i](#)

In the following table, the column labelled ‘#RSRZ > 2’ contains the number (and percentage) of RSRZ outliers, followed by percent RSRZ outliers for the chain as percentile scores relative to all X-ray entries and entries of similar resolution. The OWAB column contains the minimum, median, 95th percentile and maximum values of the occupancy-weighted average B-factor per residue. The column labelled ‘Q < 0.9’ lists the number of (and percentage) of residues with an average occupancy less than 0.9.

Mol	Chain	Analysed	<RSRZ>	#RSRZ>2	OWAB(Å ²)	Q<0.9
1	A	278/302 (92%)	0.22	20 (7%) 16 16	9, 22, 48, 63	18 (6%)

All (20) RSRZ outliers are listed below:

Mol	Chain	Res	Type	RSRZ
1	A	1290	PHE	4.6
1	A	1258	GLN	3.9
1	A	1067	GLN	2.8
1	A	1054	ASP	2.7
1	A	1053	ILE	2.7
1	A	1119	GLY	2.7
1	A	1100	ASN	2.7
1	A	1070	VAL	2.6
1	A	1057	ALA	2.6
1	A	1118	ILE	2.6
1	A	1089	PHE	2.6
1	A	1121	VAL	2.5
1	A	1056	SER	2.4
1	A	1058	LEU	2.3
1	A	1232	LYS	2.3
1	A	1062	LEU	2.3
1	A	1063	VAL	2.2
1	A	1064	GLN	2.1
1	A	1135	SER	2.1
1	A	1233	GLU	2.0

6.2 Non-standard residues in protein, DNA, RNA chains [i](#)

There are no non-standard protein/DNA/RNA residues in this entry.

6.3 Carbohydrates [i](#)

There are no carbohydrates in this entry.

6.4 Ligands [i](#)

In the following table, the Atoms column lists the number of modelled atoms in the group and the number defined in the chemical component dictionary. LLDF column lists the quality of electron density of the group with respect to its neighbouring residues in protein, DNA or RNA chains. The B-factors column lists the minimum, median, 95th percentile and maximum values of B factors of atoms in the group. The column labelled 'Q< 0.9' lists the number of atoms with occupancy less than 0.9.

Mol	Type	Chain	Res	Atoms	RSCC	RSR	LLDF	B-factors(\AA^2)	Q<0.9
2	88Z	A	1	46/46	0.95	0.11	-0.37	14,19,38,39	0

6.5 Other polymers [i](#)

There are no such residues in this entry.