



Full wwPDB X-ray Structure Validation Report ⓘ

Jan 9, 2018 – 12:01 AM EST

PDB ID : 5LS8
Title : Light-activated ruthenium complex bound to a DNA quadruplex
Authors : McQuaid, K.T.; Abell, H.; Hall, J.P.; Cardin, C.J.
Deposited on : 2016-08-22
Resolution : 1.78 Å(reported)

This is a Full wwPDB X-ray Structure Validation Report for a publicly released PDB entry.

We welcome your comments at validation@mail.wwpdb.org

A user guide is available at

<http://wwpdb.org/validation/2016/XrayValidationReportHelp>

with specific help available everywhere you see the ⓘ symbol.

The following versions of software and data (see [references ⓘ](#)) were used in the production of this report:

MolProbity : 4.02b-467
Mogul : 1.7.2 (RC1), CSD as538be (2017)
Xtriage (Phenix) : 1.9-1692
EDS : rb-20030736
Percentile statistics : 20161228.v01 (using entries in the PDB archive December 28th 2016)
Refmac : 5.8.0135
CCP4 : 6.5.0
Ideal geometry (proteins) : Engh & Huber (2001)
Ideal geometry (DNA, RNA) : Parkinson et al. (1996)
Validation Pipeline (wwPDB-VP) : rb-20030736

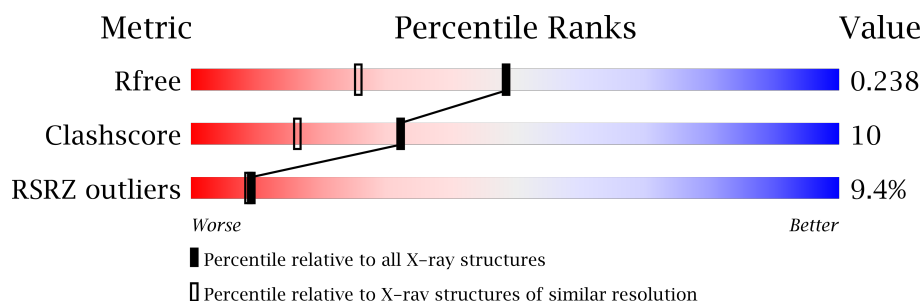
1 Overall quality at a glance

The following experimental techniques were used to determine the structure:

X-RAY DIFFRACTION

The reported resolution of this entry is 1.78 Å.

Percentile scores (ranging between 0-100) for global validation metrics of the entry are shown in the following graphic. The table shows the number of entries on which the scores are based.



Metric	Whole archive (#Entries)	Similar resolution (#Entries, resolution range(Å))
R_{free}	100719	7172 (1.80-1.76)
Clashscore	112137	8247 (1.80-1.76)
RSRZ outliers	101464	7262 (1.80-1.76)

The table below summarises the geometric issues observed across the polymeric chains and their fit to the electron density. The red, orange, yellow and green segments on the lower bar indicate the fraction of residues that contain outliers for ≥ 3 , 2, 1 and 0 types of geometric quality criteria. A grey segment represents the fraction of residues that are not modelled. The numeric value for each fraction is indicated below the corresponding segment, with a dot representing fractions $\leq 5\%$. The upper red bar (where present) indicates the fraction of residues that have poor fit to the electron density. The numeric value is given above the bar.

Mol	Chain	Length	Quality of chain
1	A	8	
1	B	8	
1	C	8	
1	D	8	

2 Entry composition i

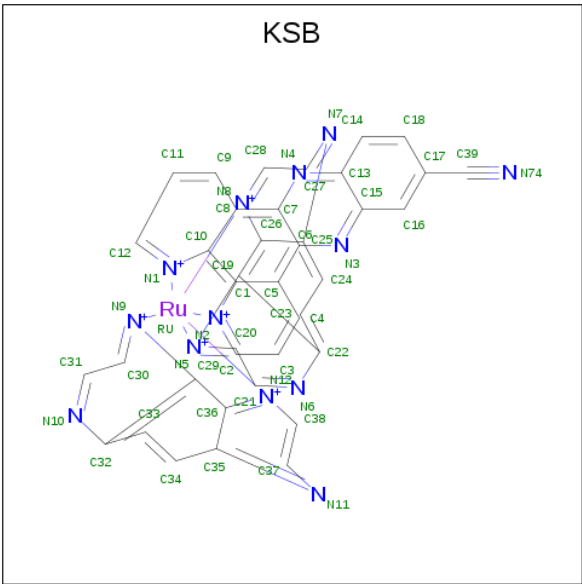
There are 5 unique types of molecules in this entry. The entry contains 1043 atoms, of which 0 are hydrogens and 0 are deuteriums.

In the tables below, the ZeroOcc column contains the number of atoms modelled with zero occupancy, the AltConf column contains the number of residues with at least one atom in alternate conformation and the Trace column contains the number of residues modelled with at most 2 atoms.

- Molecule 1 is a DNA chain called DNA (5'-D(*TP*AP*GP*GP*GP*TP*TP*A)-3').

Mol	Chain	Residues	Atoms					ZeroOcc	AltConf	Trace
1	A	8	Total	C	N	O	P	0	1	0
			171	81	31	51	8			
1	B	8	Total	C	N	O	P	0	1	0
			170	80	31	51	8			
1	C	8	Total	C	N	O	P	0	1	0
			171	81	31	51	8			
1	D	8	Total	C	N	O	P	0	1	0
			187	90	36	53	8			

- Molecule 2 is lambda-[Ru(tap2-dppz-CN)]²⁺ (three-letter code: KSB) (formula: C₃₉H₂₁N₁₃Ru).



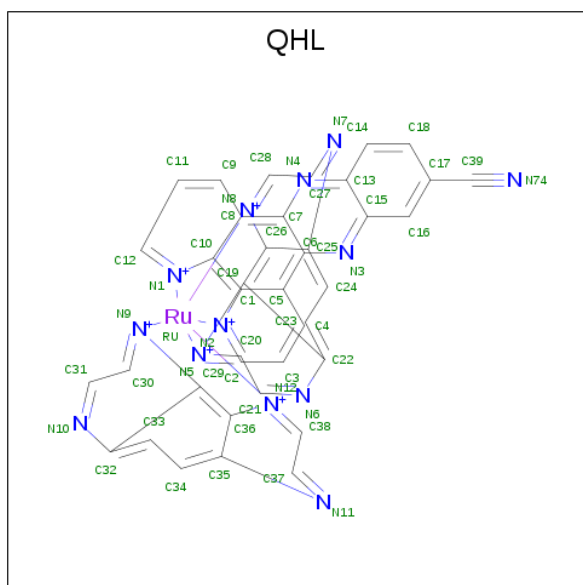
Mol	Chain	Residues	Atoms				ZeroOcc	AltConf
2	A	1	Total	C	N	Ru	0	0
			53	39	13	1		
2	B	1	Total	C	N	Ru	0	0
			53	39	13	1		

Continued on next page...

Continued from previous page...

Mol	Chain	Residues	Atoms				ZeroOcc	AltConf
2	C	1	Total	C	N	Ru	0	0
			53	39	13	1		
2	D	1	Total	C	N	Ru	0	0
			53	39	13	1		

- Molecule 3 is delta-[Ru(tap2-dppz-CN)]²⁺ (three-letter code: QHL) (formula: C₃₉H₂₁N₁₃Ru).



Mol	Chain	Residues	Atoms				ZeroOcc	AltConf
3	A	1	Total	C	N	Ru	0	0
			53	39	13	1		
3	C	1	Total	C	N	Ru	0	0
			53	39	13	1		

- Molecule 4 is POTASSIUM ION (three-letter code: K) (formula: K).

Mol	Chain	Residues	Atoms		ZeroOcc	AltConf
4	A	2	Total	K	0	0
			2	2		

- Molecule 5 is water.

Mol	Chain	Residues	Atoms		ZeroOcc	AltConf
5	A	10	Total	O	0	0
			10	10		
5	B	6	Total	O	0	0
			6	6		

Continued on next page...

Continued from previous page...

Mol	Chain	Residues	Atoms		ZeroOcc	AltConf
5	C	5	Total	O	0	0
			5	5		
5	D	3	Total	O	0	0
			3	3		

3 Residue-property plots [i](#)


These plots are drawn for all protein, RNA and DNA chains in the entry. The first graphic for a chain summarises the proportions of the various outlier classes displayed in the second graphic. The second graphic shows the sequence view annotated by issues in geometry and electron density. Residues are color-coded according to the number of geometric quality criteria for which they contain at least one outlier: green = 0, yellow = 1, orange = 2 and red = 3 or more. A red dot above a residue indicates a poor fit to the electron density ($RSRZ > 2$). Stretches of 2 or more consecutive residues without any outlier are shown as a green connector. Residues present in the sample, but not in the model, are shown in grey.

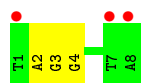
- Molecule 1: DNA (5'-D(*TP*AP*GP*GP*GP*TP*TP*A)-3')

Chain A: 



- Molecule 1: DNA (5'-D(*TP*AP*GP*GP*GP*TP*TP*A)-3')

Chain B: 



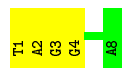
- Molecule 1: DNA (5'-D(*TP*AP*GP*GP*GP*TP*TP*A)-3')

Chain C: 



- Molecule 1: DNA (5'-D(*TP*AP*GP*GP*GP*TP*TP*A)-3')

Chain D: 



4 Data and refinement statistics

Property	Value	Source
Space group	P 65	Depositor
Cell constants a, b, c, α , β , γ	36.62Å 36.62Å 136.10Å 90.00° 90.00° 120.00°	Depositor
Resolution (Å)	31.72 – 1.78 31.72 – 1.78	Depositor EDS
% Data completeness (in resolution range)	99.6 (31.72-1.78) 99.8 (31.72-1.78)	Depositor EDS
R_{merge}	0.07	Depositor
R_{sym}	(Not available)	Depositor
$\langle I/\sigma(I) \rangle$ ¹	2.32 (at 1.78Å)	Xtriage
Refinement program	PHENIX (dev_2450: ???)	Depositor
R, R_{free}	0.214 , 0.233 0.226 , 0.238	Depositor DCC
R_{free} test set	486 reflections (5.17%)	DCC
Wilson B-factor (Å ²)	34.2	Xtriage
Anisotropy	0.245	Xtriage
Bulk solvent k_{sol} (e/Å ³), B_{sol} (Å ²)	0.34 , 40.5	EDS
L-test for twinning ²	$\langle L \rangle = 0.51$, $\langle L^2 \rangle = 0.35$	Xtriage
Estimated twinning fraction	0.489 for h,-h-k,-l	Xtriage
F_o, F_c correlation	0.97	EDS
Total number of atoms	1043	wwPDB-VP
Average B, all atoms (Å ²)	48.0	wwPDB-VP

Xtriage's analysis on translational NCS is as follows: *The largest off-origin peak in the Patterson function is 11.28% of the height of the origin peak. No significant pseudotranslation is detected.*

¹Intensities estimated from amplitudes.

²Theoretical values of $\langle |L| \rangle$, $\langle L^2 \rangle$ for acentric reflections are 0.5, 0.333 respectively for untwinned datasets, and 0.375, 0.2 for perfectly twinned datasets.

5 Model quality [i](#)

5.1 Standard geometry [i](#)

Bond lengths and bond angles in the following residue types are not validated in this section: K, QHL, KSB

The Z score for a bond length (or angle) is the number of standard deviations the observed value is removed from the expected value. A bond length (or angle) with $|Z| > 5$ is considered an outlier worth inspection. RMSZ is the root-mean-square of all Z scores of the bond lengths (or angles).

Mol	Chain	Bond lengths		Bond angles	
		RMSZ	$\# Z > 5$	RMSZ	$\# Z > 5$
1	A	0.76	0/191	1.19	0/295
1	B	0.73	0/190	1.03	0/294
1	C	0.73	0/191	1.12	0/295
1	D	0.67	0/210	1.05	0/324
All	All	0.72	0/782	1.10	0/1208

There are no bond length outliers.

There are no bond angle outliers.

There are no chirality outliers.

There are no planarity outliers.

5.2 Too-close contacts [i](#)

In the following table, the Non-H and H(model) columns list the number of non-hydrogen atoms and hydrogen atoms in the chain respectively. The H(added) column lists the number of hydrogen atoms added and optimized by MolProbity. The Clashes column lists the number of clashes within the asymmetric unit, whereas Symm-Clashes lists symmetry related clashes.

Mol	Chain	Non-H	H(model)	H(added)	Clashes	Symm-Clashes
1	A	171	0	91	6	0
1	B	170	0	91	2	0
1	C	171	0	91	3	0
1	D	187	0	103	3	0
2	A	53	0	0	0	0
2	B	53	0	0	1	0
2	C	53	0	0	0	0
2	D	53	0	0	1	0
3	A	53	0	0	0	0

Continued on next page...

Continued from previous page...

Mol	Chain	Non-H	H(model)	H(added)	Clashes	Symm-Clashes
3	C	53	0	0	1	0
4	A	2	0	0	0	0
5	A	10	0	0	0	0
5	B	6	0	0	0	0
5	C	5	0	0	0	0
5	D	3	0	0	0	0
All	All	1043	0	376	14	0

The all-atom clashscore is defined as the number of clashes found per 1000 atoms (including hydrogen atoms). The all-atom clashscore for this structure is 10.

All (14) close contacts within the same asymmetric unit are listed below, sorted by their clash magnitude.

Atom-1	Atom-2	Interatomic distance (Å)	Clash overlap (Å)
1:C:7:DT:H1'	3:C:102:QHL:C14	2.34	0.57
1:D:3:DG:H1'	1:D:4[A]:DG:H5'	1.89	0.54
1:A:4[B]:DG:H2''	1:A:5:DG:O5'	2.09	0.52
1:A:4[A]:DG:H2'	1:A:5:DG:C8	2.48	0.48
1:C:3:DG:H1'	1:C:4[A]:DG:H5'	1.94	0.47
2:B:101:KSB:C3	1:D:2:DA:H1'	2.44	0.47
1:B:3:DG:H1'	1:B:4[B]:DG:H5'	1.97	0.46
1:A:3:DG:H2'	1:A:3:DG:N3	2.31	0.44
1:C:3:DG:H2'	1:C:3:DG:N3	2.33	0.43
1:A:4[B]:DG:H2'	1:A:5:DG:C8	2.54	0.42
1:B:2:DA:H1'	2:D:101:KSB:C3	2.49	0.42
1:A:4[B]:DG:H4'	1:A:5:DG:OP1	2.19	0.42
1:A:4[A]:DG:H2''	1:A:5:DG:O5'	2.20	0.41
1:D:1:DT:C6	1:D:1:DT:H5'	2.55	0.41

There are no symmetry-related clashes.

5.3 Torsion angles

5.3.1 Protein backbone

There are no protein molecules in this entry.

5.3.2 Protein sidechains

There are no protein molecules in this entry.

5.3.3 RNA ⓘ

There are no RNA molecules in this entry.

5.4 Non-standard residues in protein, DNA, RNA chains ⓘ

There are no non-standard protein/DNA/RNA residues in this entry.

5.5 Carbohydrates ⓘ

There are no carbohydrates in this entry.

5.6 Ligand geometry ⓘ

Of 8 ligands modelled in this entry, 2 are monoatomic - leaving 6 for Mogul analysis.

In the following table, the Counts columns list the number of bonds (or angles) for which Mogul statistics could be retrieved, the number of bonds (or angles) that are observed in the model and the number of bonds (or angles) that are defined in the Chemical Component Dictionary. The Link column lists molecule types, if any, to which the group is linked. The Z score for a bond length (or angle) is the number of standard deviations the observed value is removed from the expected value. A bond length (or angle) with $|Z| > 2$ is considered an outlier worth inspection. RMSZ is the root-mean-square of all Z scores of the bond lengths (or angles).

Mol	Type	Chain	Res	Link	Bond lengths			Bond angles		
					Counts	RMSZ	# Z > 2	Counts	RMSZ	# Z > 2
2	KSB	A	101	-	66,66,66	5.10	14 (21%)	85,112,112	1.88	27 (31%)
3	QHL	A	102	-	66,66,66	1.51	8 (12%)	85,112,112	1.65	27 (31%)
2	KSB	B	101	-	66,66,66	5.11	14 (21%)	85,112,112	1.87	28 (32%)
2	KSB	C	101	-	66,66,66	5.04	13 (19%)	85,112,112	2.08	31 (36%)
3	QHL	C	102	-	66,66,66	1.52	8 (12%)	85,112,112	1.64	26 (30%)
2	KSB	D	101	-	66,66,66	5.13	14 (21%)	85,112,112	1.83	27 (31%)

In the following table, the Chirals column lists the number of chiral outliers, the number of chiral centers analysed, the number of these observed in the model and the number defined in the Chemical Component Dictionary. Similar counts are reported in the Torsion and Rings columns. '-' means no outliers of that kind were identified.

Mol	Type	Chain	Res	Link	Chirals	Torsions	Rings
2	KSB	A	101	-	-	0/2/62/62	0/14/14/14
3	QHL	A	102	-	-	0/2/62/62	0/14/14/14
2	KSB	B	101	-	-	0/2/62/62	0/14/14/14

Continued on next page...

Continued from previous page...

Mol	Type	Chain	Res	Link	Chirals	Torsions	Rings
2	KSB	C	101	-	-	0/2/62/62	0/14/14/14
3	QHL	C	102	-	-	0/2/62/62	0/14/14/14
2	KSB	D	101	-	-	0/2/62/62	0/14/14/14

All (71) bond length outliers are listed below:

Mol	Chain	Res	Type	Atoms	Z	Observed(Å)	Ideal(Å)
2	D	101	KSB	RU-N9	-17.65	1.80	2.07
2	B	101	KSB	RU-N9	-17.50	1.80	2.07
2	A	101	KSB	RU-N1	-17.08	1.81	2.07
2	D	101	KSB	RU-N1	-16.84	1.81	2.07
2	A	101	KSB	RU-N9	-16.82	1.81	2.07
2	C	101	KSB	RU-N9	-16.69	1.82	2.07
2	B	101	KSB	RU-N12	-16.53	1.82	2.07
2	D	101	KSB	RU-N12	-16.46	1.82	2.07
2	C	101	KSB	RU-N8	-16.27	1.82	2.07
2	A	101	KSB	RU-N12	-16.18	1.82	2.07
2	B	101	KSB	RU-N1	-16.11	1.82	2.07
2	C	101	KSB	RU-N12	-16.03	1.83	2.07
2	D	101	KSB	RU-N5	-15.92	1.83	2.07
2	C	101	KSB	RU-N5	-15.92	1.83	2.07
2	B	101	KSB	RU-N5	-15.84	1.83	2.07
2	C	101	KSB	RU-N1	-15.79	1.83	2.07
2	A	101	KSB	RU-N8	-15.77	1.83	2.07
2	B	101	KSB	RU-N8	-15.57	1.83	2.07
2	A	101	KSB	RU-N5	-15.49	1.83	2.07
2	D	101	KSB	RU-N8	-15.16	1.84	2.07
2	A	101	KSB	RU-N2	-14.81	1.84	2.07
2	D	101	KSB	RU-N2	-14.74	1.84	2.07
2	B	101	KSB	RU-N2	-14.73	1.84	2.07
2	C	101	KSB	RU-N2	-14.12	1.85	2.07
2	B	101	KSB	C17-C39	-6.66	1.28	1.44
2	D	101	KSB	C17-C39	-6.55	1.28	1.44
3	C	102	QHL	C17-C39	-6.20	1.29	1.44
2	C	101	KSB	C17-C39	-6.18	1.29	1.44
2	A	101	KSB	C17-C39	-6.16	1.29	1.44
3	A	102	QHL	C17-C39	-6.14	1.29	1.44
2	A	101	KSB	C10-C1	-3.57	1.35	1.43
2	A	101	KSB	C29-C36	-3.55	1.35	1.43
2	C	101	KSB	C10-C1	-3.49	1.35	1.43
2	B	101	KSB	C19-C26	-3.47	1.35	1.43
2	D	101	KSB	C29-C36	-3.46	1.35	1.43

Continued on next page...

Continued from previous page...

Mol	Chain	Res	Type	Atoms	Z	Observed(Å)	Ideal(Å)
2	C	101	KSB	C19-C26	-3.44	1.35	1.43
2	C	101	KSB	C29-C36	-3.44	1.35	1.43
2	A	101	KSB	C19-C26	-3.42	1.36	1.43
2	B	101	KSB	C29-C36	-3.36	1.36	1.43
2	D	101	KSB	C19-C26	-3.35	1.36	1.43
2	B	101	KSB	C10-C1	-3.34	1.36	1.43
2	D	101	KSB	C10-C1	-3.30	1.36	1.43
2	A	101	KSB	C5-C6	-2.72	1.39	1.45
3	A	102	QHL	C8-C7	-2.67	1.39	1.45
3	C	102	QHL	C5-C6	-2.63	1.39	1.45
3	A	102	QHL	C5-C6	-2.61	1.39	1.45
2	B	101	KSB	C5-C6	-2.53	1.39	1.45
2	D	101	KSB	C5-C6	-2.46	1.40	1.45
2	C	101	KSB	C5-C6	-2.45	1.40	1.45
3	C	102	QHL	RU-N12	-2.41	2.03	2.07
3	A	102	QHL	RU-N12	-2.39	2.03	2.07
3	A	102	QHL	C29-C36	-2.36	1.38	1.43
3	C	102	QHL	C29-C36	-2.31	1.38	1.43
3	A	102	QHL	C19-C26	-2.28	1.38	1.43
3	A	102	QHL	C1-C10	-2.28	1.38	1.43
3	C	102	QHL	C19-C26	-2.25	1.38	1.43
3	C	102	QHL	C8-C7	-2.24	1.40	1.45
3	C	102	QHL	C1-C10	-2.23	1.38	1.43
2	D	101	KSB	C8-C7	-2.22	1.40	1.45
2	B	101	KSB	C8-C7	-2.16	1.40	1.45
2	B	101	KSB	C23-C24	2.03	1.40	1.35
2	D	101	KSB	C23-C24	2.04	1.41	1.35
2	D	101	KSB	C33-C34	2.05	1.41	1.35
2	A	101	KSB	C23-C24	2.05	1.41	1.35
2	B	101	KSB	C33-C34	2.08	1.41	1.35
3	C	102	QHL	C19-N5	2.08	1.40	1.37
3	A	102	QHL	C10-N1	2.19	1.40	1.37
2	A	101	KSB	C7-N4	2.30	1.36	1.33
2	C	101	KSB	C7-N4	2.33	1.36	1.33
2	A	101	KSB	C10-N1	2.60	1.41	1.37
2	C	101	KSB	C10-N1	3.56	1.42	1.37

All (166) bond angle outliers are listed below:

Mol	Chain	Res	Type	Atoms	Z	Observed(°)	Ideal(°)
2	C	101	KSB	C6-C7-N4	-4.32	117.80	121.85
2	C	101	KSB	C10-C1-N2	-4.07	111.97	116.57

Continued on next page...

Continued from previous page...

Mol	Chain	Res	Type	Atoms	Z	Observed(°)	Ideal(°)
2	A	101	KSB	C29-C36-N12	-3.65	112.45	116.57
2	A	101	KSB	C6-C7-N4	-3.64	118.44	121.85
2	C	101	KSB	C29-C36-N12	-3.55	112.56	116.57
2	A	101	KSB	C10-C1-N2	-3.46	112.67	116.57
2	D	101	KSB	C29-C36-N12	-3.39	112.75	116.57
2	B	101	KSB	C6-C7-N4	-3.36	118.70	121.85
2	D	101	KSB	C6-C7-N4	-3.30	118.75	121.85
3	C	102	QHL	C3-C2-N2	-3.27	117.85	122.66
2	B	101	KSB	C29-C36-N12	-3.18	112.98	116.57
2	B	101	KSB	C29-C32-N10	-3.17	117.07	120.85
2	A	101	KSB	C26-C19-N5	-3.16	113.00	116.57
3	C	102	QHL	C11-C12-N1	-3.12	118.06	122.66
2	B	101	KSB	C26-C25-N7	-3.07	117.19	120.85
2	D	101	KSB	C19-C26-N8	-3.05	113.12	116.57
2	B	101	KSB	C26-C19-N5	-3.05	113.13	116.57
2	D	101	KSB	C29-C32-N10	-3.03	117.24	120.85
2	A	101	KSB	C26-C25-N7	-3.01	117.26	120.85
2	D	101	KSB	C26-C25-N7	-2.99	117.28	120.85
2	C	101	KSB	C26-C19-N5	-2.93	113.26	116.57
2	C	101	KSB	C26-C25-N7	-2.89	117.41	120.85
2	D	101	KSB	C26-C19-N5	-2.88	113.32	116.57
3	A	102	QHL	C3-C2-N2	-2.87	118.43	122.66
2	A	101	KSB	C29-C32-N10	-2.86	117.44	120.85
3	A	102	QHL	C11-C12-N1	-2.84	118.47	122.66
2	B	101	KSB	C19-C26-N8	-2.83	113.38	116.57
2	A	101	KSB	C11-C12-N1	-2.81	118.52	122.66
2	D	101	KSB	C10-C1-N2	-2.80	113.41	116.57
2	B	101	KSB	C10-C1-N2	-2.78	113.43	116.57
2	C	101	KSB	C36-C29-N9	-2.73	113.48	116.57
2	D	101	KSB	C19-C22-N6	-2.62	117.73	120.85
2	C	101	KSB	C1-C10-N1	-2.61	113.63	116.57
2	A	101	KSB	C19-C22-N6	-2.57	117.78	120.85
2	C	101	KSB	C36-C35-N11	-2.56	117.80	120.85
3	A	102	QHL	C29-C32-N10	-2.55	117.81	120.85
2	D	101	KSB	C13-C15-N3	-2.55	119.22	121.40
2	B	101	KSB	C19-C22-N6	-2.54	117.83	120.85
2	C	101	KSB	C13-C15-N3	-2.53	119.23	121.40
3	C	102	QHL	C19-C22-N6	-2.50	117.86	120.85
3	C	102	QHL	C29-C32-N10	-2.49	117.88	120.85
2	C	101	KSB	C9-C8-C10	-2.48	115.17	117.83
3	C	102	QHL	C6-C7-N4	-2.47	119.53	121.85
3	A	102	QHL	C26-C25-N7	-2.46	117.92	120.85

Continued on next page...

Continued from previous page...

Mol	Chain	Res	Type	Atoms	Z	Observed(°)	Ideal(°)
2	C	101	KSB	C11-C12-N1	-2.46	119.04	122.66
3	A	102	QHL	C36-C35-N11	-2.45	117.93	120.85
2	B	101	KSB	C13-C15-N3	-2.44	119.31	121.40
2	A	101	KSB	C19-C26-N8	-2.44	113.81	116.57
3	A	102	QHL	C37-C38-N12	-2.41	117.35	121.27
2	A	101	KSB	C9-C8-C10	-2.39	115.26	117.83
3	C	102	QHL	C36-C35-N11	-2.37	118.03	120.85
3	C	102	QHL	C26-C25-N7	-2.37	118.03	120.85
2	B	101	KSB	C11-C12-N1	-2.37	119.17	122.66
3	C	102	QHL	C37-C38-N12	-2.36	117.44	121.27
2	C	101	KSB	C29-C32-N10	-2.36	118.04	120.85
2	D	101	KSB	C11-C12-N1	-2.35	119.19	122.66
2	D	101	KSB	C36-C35-N11	-2.34	118.06	120.85
2	B	101	KSB	C1-C10-N1	-2.33	113.94	116.57
3	A	102	QHL	C19-C22-N6	-2.33	118.08	120.85
2	A	101	KSB	C36-C29-N9	-2.32	113.95	116.57
3	A	102	QHL	C35-C36-N12	-2.28	120.86	122.66
3	C	102	QHL	C31-C30-N9	-2.24	117.64	121.27
2	C	101	KSB	C19-C26-N8	-2.24	114.05	116.57
2	C	101	KSB	C15-C13-N4	-2.23	119.48	121.40
2	A	101	KSB	C1-C10-N1	-2.21	114.08	116.57
3	A	102	QHL	C31-C30-N9	-2.21	117.69	121.27
2	B	101	KSB	C36-C35-N11	-2.21	118.22	120.85
2	C	101	KSB	C19-C22-N6	-2.20	118.22	120.85
2	A	101	KSB	C36-C35-N11	-2.20	118.23	120.85
2	D	101	KSB	C1-C10-N1	-2.17	114.12	116.57
3	C	102	QHL	C35-C36-N12	-2.16	120.96	122.66
2	B	101	KSB	C31-C30-N9	-2.16	117.77	121.27
2	D	101	KSB	C3-C4-C5	-2.16	117.17	120.81
3	A	102	QHL	C5-C1-N2	-2.15	120.79	122.80
3	A	102	QHL	C27-C28-N8	-2.15	117.78	121.27
2	D	101	KSB	C31-C30-N9	-2.14	117.79	121.27
3	C	102	QHL	C32-C29-N9	-2.14	120.98	122.66
2	B	101	KSB	C36-C29-N9	-2.08	114.23	116.57
2	C	101	KSB	C3-C4-C5	-2.06	117.33	120.81
3	A	102	QHL	C25-C26-N8	-2.04	121.06	122.66
3	C	102	QHL	C5-C1-N2	-2.03	120.90	122.80
3	A	102	QHL	C12-C11-C9	2.02	122.29	119.39
2	A	101	KSB	C5-C1-C10	2.04	122.73	120.66
3	A	102	QHL	C12-N1-C10	2.04	120.12	117.56
2	C	101	KSB	C25-C26-N8	2.06	124.28	122.66
2	C	101	KSB	C2-C3-C4	2.08	122.37	119.39

Continued on next page...

Continued from previous page...

Mol	Chain	Res	Type	Atoms	Z	Observed(°)	Ideal(°)
2	C	101	KSB	C32-C29-N9	2.09	124.30	122.66
2	B	101	KSB	C2-C3-C4	2.14	122.45	119.39
2	D	101	KSB	C12-C11-C9	2.16	122.48	119.39
3	C	102	QHL	C21-N6-C22	2.18	120.36	116.89
2	D	101	KSB	C35-C36-N12	2.21	124.40	122.66
2	D	101	KSB	C8-C10-N1	2.26	124.91	122.80
3	A	102	QHL	C21-N6-C22	2.26	120.48	116.89
3	C	102	QHL	C6-N3-C15	2.30	119.19	116.76
3	C	102	QHL	C27-N7-C25	2.31	120.55	116.89
2	C	101	KSB	C22-C19-N5	2.31	124.48	122.66
3	A	102	QHL	C30-N9-C29	2.36	120.51	117.56
2	B	101	KSB	C32-C29-N9	2.36	124.52	122.66
3	A	102	QHL	C28-N8-C26	2.37	120.53	117.56
2	B	101	KSB	C12-C11-C9	2.38	122.80	119.39
3	C	102	QHL	C7-N4-C13	2.39	119.28	116.76
2	D	101	KSB	C32-C29-N9	2.43	124.57	122.66
2	A	101	KSB	C25-C26-N8	2.46	124.60	122.66
3	C	102	QHL	C30-N9-C29	2.48	120.67	117.56
2	B	101	KSB	C5-C1-N2	2.50	125.14	122.80
3	C	102	QHL	C37-N11-C35	2.50	120.86	116.89
3	A	102	QHL	C37-N11-C35	2.59	121.00	116.89
3	A	102	QHL	C6-N3-C15	2.60	119.51	116.76
3	A	102	QHL	C27-N7-C25	2.61	121.03	116.89
2	D	101	KSB	C8-C7-N4	2.65	121.16	118.33
2	A	101	KSB	C12-C11-C9	2.65	123.19	119.39
2	B	101	KSB	C8-C10-N1	2.65	125.28	122.80
2	A	101	KSB	C32-C29-N9	2.72	124.80	122.66
3	C	102	QHL	C31-N10-C32	2.75	121.26	116.89
2	A	101	KSB	C35-C36-N12	2.80	124.87	122.66
3	C	102	QHL	C38-N12-C36	2.81	121.08	117.56
3	A	102	QHL	C38-N12-C36	2.82	121.10	117.56
3	A	102	QHL	C31-N10-C32	2.82	121.37	116.89
2	A	101	KSB	C6-N3-C15	2.84	119.77	116.76
2	B	101	KSB	C8-C7-N4	2.86	121.39	118.33
3	C	102	QHL	C12-N1-C10	2.88	121.17	117.56
2	C	101	KSB	C5-C1-N2	2.90	125.51	122.80
2	B	101	KSB	C25-C26-N8	2.91	124.95	122.66
3	C	102	QHL	C24-C25-N7	2.96	123.33	118.53
2	D	101	KSB	C22-C19-N5	2.97	124.99	122.66
3	C	102	QHL	C23-C22-N6	2.99	123.39	118.53
3	A	102	QHL	C23-C22-N6	3.04	123.47	118.53
2	B	101	KSB	C22-C19-N5	3.11	125.11	122.66

Continued on next page...

Continued from previous page...

Mol	Chain	Res	Type	Atoms	Z	Observed(°)	Ideal(°)
2	A	101	KSB	C22-C19-N5	3.12	125.12	122.66
3	A	102	QHL	C24-C25-N7	3.15	123.63	118.53
3	C	102	QHL	C34-C35-N11	3.20	123.73	118.53
3	C	102	QHL	C33-C32-N10	3.22	123.75	118.53
2	A	101	KSB	C34-C35-N11	3.23	123.77	118.53
3	A	102	QHL	C34-C35-N11	3.27	123.83	118.53
2	B	101	KSB	C23-C22-N6	3.30	123.88	118.53
2	D	101	KSB	C23-C22-N6	3.30	123.88	118.53
2	C	101	KSB	C12-C11-C9	3.30	124.12	119.39
2	D	101	KSB	C25-C26-N8	3.31	125.26	122.66
3	A	102	QHL	C33-C32-N10	3.36	123.98	118.53
2	D	101	KSB	C34-C35-N11	3.38	124.02	118.53
2	A	101	KSB	C23-C22-N6	3.39	124.02	118.53
2	B	101	KSB	C34-C35-N11	3.41	124.06	118.53
2	A	101	KSB	C8-C7-N4	3.42	121.99	118.33
2	A	101	KSB	C8-C10-N1	3.42	125.99	122.80
3	A	102	QHL	C2-N2-C1	3.45	121.87	117.56
2	C	101	KSB	C23-C22-N6	3.52	124.24	118.53
2	C	101	KSB	C35-C36-N12	3.58	125.48	122.66
2	A	101	KSB	C7-N4-C13	3.60	120.56	116.76
2	D	101	KSB	C24-C25-N7	3.60	124.37	118.53
2	D	101	KSB	C7-N4-C13	3.62	120.58	116.76
3	C	102	QHL	C2-N2-C1	3.62	122.09	117.56
2	A	101	KSB	C24-C25-N7	3.64	124.42	118.53
2	C	101	KSB	C34-C35-N11	3.64	124.44	118.53
2	C	101	KSB	C33-C32-N10	3.66	124.46	118.53
2	B	101	KSB	C7-N4-C13	3.68	120.65	116.76
2	C	101	KSB	C24-C25-N7	3.69	124.52	118.53
2	D	101	KSB	C6-N3-C15	3.69	120.66	116.76
2	B	101	KSB	C24-C25-N7	3.72	124.56	118.53
2	C	101	KSB	C6-N3-C15	3.79	120.77	116.76
2	C	101	KSB	C8-C7-N4	3.79	122.39	118.33
2	B	101	KSB	C6-N3-C15	3.85	120.82	116.76
2	A	101	KSB	C33-C32-N10	3.89	124.84	118.53
2	D	101	KSB	C33-C32-N10	3.90	124.86	118.53
2	B	101	KSB	C33-C32-N10	4.08	125.15	118.53
2	C	101	KSB	C8-C10-N1	4.72	127.21	122.80
2	C	101	KSB	C7-N4-C13	4.76	121.79	116.76

There are no chirality outliers.

There are no torsion outliers.

There are no ring outliers.

3 monomers are involved in 3 short contacts:

Mol	Chain	Res	Type	Clashes	Symm-Clashes
2	B	101	KSB	1	0
3	C	102	QHL	1	0
2	D	101	KSB	1	0

5.7 Other polymers [i](#)

There are no such residues in this entry.

5.8 Polymer linkage issues [i](#)

There are no chain breaks in this entry.

6 Fit of model and data [i](#)

6.1 Protein, DNA and RNA chains [i](#)

In the following table, the column labelled ‘#RSRZ> 2’ contains the number (and percentage) of RSRZ outliers, followed by percent RSRZ outliers for the chain as percentile scores relative to all X-ray entries and entries of similar resolution. The OWAB column contains the minimum, median, 95th percentile and maximum values of the occupancy-weighted average B-factor per residue. The column labelled ‘Q< 0.9’ lists the number of (and percentage) of residues with an average occupancy less than 0.9.

Mol	Chain	Analysed	<RSRZ>	#RSRZ>2	OWAB(Å ²)	Q<0.9
1	A	8/8 (100%)	0.13	0 100 100	35, 41, 54, 88	0
1	B	8/8 (100%)	0.88	3 (37%) 0 0	38, 47, 96, 117	0
1	C	8/8 (100%)	0.15	0 100 100	35, 40, 52, 86	0
1	D	8/8 (100%)	0.47	0 100 100	39, 50, 96, 108	0
All	All	32/32 (100%)	0.41	3 (9%) 9 9	35, 44, 96, 117	0

All (3) RSRZ outliers are listed below:

Mol	Chain	Res	Type	RSRZ
1	B	8	DA	2.9
1	B	7	DT	2.6
1	B	1	DT	2.4

6.2 Non-standard residues in protein, DNA, RNA chains [i](#)

There are no non-standard protein/DNA/RNA residues in this entry.

6.3 Carbohydrates [i](#)

There are no carbohydrates in this entry.

6.4 Ligands [i](#)

In the following table, the Atoms column lists the number of modelled atoms in the group and the number defined in the chemical component dictionary. LLDF column lists the quality of electron density of the group with respect to its neighbouring residues in protein, DNA or RNA chains. The B-factors column lists the minimum, median, 95th percentile and maximum values of B factors of atoms in the group. The column labelled ‘Q< 0.9’ lists the number of atoms with occupancy less than 0.9.

Mol	Type	Chain	Res	Atoms	RSCC	RSR	LLDF	B-factors(\AA^2)	Q<0.9
2	KSB	D	101	53/53	0.97	0.11	0.63	22,40,47,50	0
2	KSB	A	101	53/53	0.97	0.12	0.40	22,39,53,57	0
2	KSB	C	101	53/53	0.97	0.13	0.35	23,40,52,58	0
2	KSB	B	101	53/53	0.97	0.11	0.22	32,41,46,47	0
3	QHL	C	102	53/53	0.96	0.13	-0.06	25,39,56,61	0
3	QHL	A	102	53/53	0.97	0.12	-0.21	27,36,54,61	0
4	K	A	104	1/1	0.96	0.09	-1.15	31,31,31,31	0
4	K	A	103	1/1	0.98	0.08	-1.90	32,32,32,32	0

6.5 Other polymers [i](#)

There are no such residues in this entry.