



# Full wwPDB X-ray Structure Validation Report ⓘ

Feb 14, 2017 – 09:53 pm GMT

PDB ID : 1LTK  
Title : CRYSTAL STRUCTURE OF PHOSPHOGLYCERATE KINASE FROM PLASMODIUM FALCIPARUM, IN THE OPEN CONFORMATION  
Authors : Chattopadhyay, D.; Pal, B.; Smith, C.D.  
Deposited on : 2002-05-20  
Resolution : 3.00 Å(reported)

This is a Full wwPDB X-ray Structure Validation Report for a publicly released PDB entry.

We welcome your comments at [validation@mail.wwpdb.org](mailto:validation@mail.wwpdb.org)

A user guide is available at

<http://wwpdb.org/validation/2016/XrayValidationReportHelp>

with specific help available everywhere you see the ⓘ symbol.

---

The following versions of software and data (see [references ⓘ](#)) were used in the production of this report:

MolProbity	:	4.02b-467
Mogul	:	1.7.2 (RC1), CSD as538be (2017)
Xtriage (Phenix)	:	1.9-1692
EDS	:	trunk28620
Percentile statistics	:	20161228.v01 (using entries in the PDB archive December 28th 2016)
Refmac	:	5.8.0135
CCP4	:	6.5.0
Ideal geometry (proteins)	:	Engh & Huber (2001)
Ideal geometry (DNA, RNA)	:	Parkinson et al. (1996)
Validation Pipeline (wwPDB-VP)	:	recalc28949

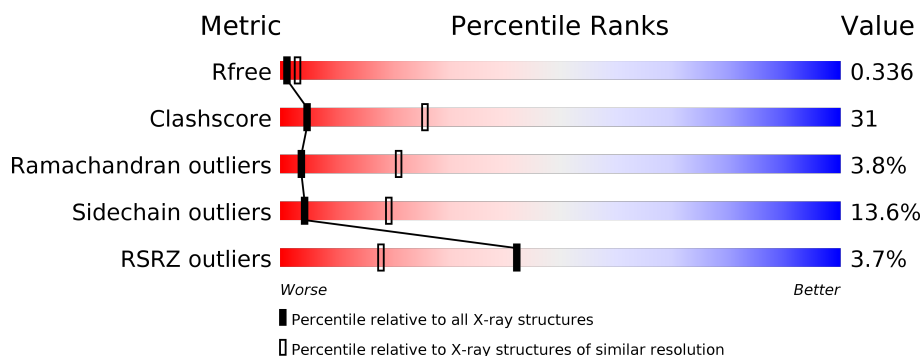
# 1 Overall quality at a glance ⓘ

The following experimental techniques were used to determine the structure:

## *X-RAY DIFFRACTION*

The reported resolution of this entry is 3.00 Å.

Percentile scores (ranging between 0-100) for global validation metrics of the entry are shown in the following graphic. The table shows the number of entries on which the scores are based.



Metric	Whole archive (#Entries)	Similar resolution (#Entries, resolution range(Å))
$R_{free}$	100719	1692 (3.00-3.00)
Clashscore	112137	2037 (3.00-3.00)
Ramachandran outliers	110173	1973 (3.00-3.00)
Sidechain outliers	110143	1976 (3.00-3.00)
RSRZ outliers	101464	1716 (3.00-3.00)

The table below summarises the geometric issues observed across the polymeric chains and their fit to the electron density. The red, orange, yellow and green segments on the lower bar indicate the fraction of residues that contain outliers for  $\geq 3$ , 2, 1 and 0 types of geometric quality criteria. A grey segment represents the fraction of residues that are not modelled. The numeric value for each fraction is indicated below the corresponding segment, with a dot representing fractions  $\leq 5\%$ . The upper red bar (where present) indicates the fraction of residues that have poor fit to the electron density. The numeric value is given above the bar.

Mol	Chain	Length	Quality of chain
1	A	425	
1	B	425	
1	C	425	

The following table lists non-polymeric compounds, carbohydrate monomers and non-standard residues in protein, DNA, RNA chains that are outliers for geometric or electron-density-fit criteria:

Mol	Type	Chain	Res	Chirality	Geometry	Clashes	Electron density
2	SO4	C	604	-	-	-	X
3	AMP	A	501	-	-	-	X
3	AMP	B	502	-	-	-	X
3	AMP	C	503	-	-	-	X
4	GOL	A	614	-	X	-	-

## 2 Entry composition

There are 5 unique types of molecules in this entry. The entry contains 9805 atoms, of which 0 are hydrogens and 0 are deuteriums.

In the tables below, the ZeroOcc column contains the number of atoms modelled with zero occupancy, the AltConf column contains the number of residues with at least one atom in alternate conformation and the Trace column contains the number of residues modelled with at most 2 atoms.

- Molecule 1 is a protein called PHOSPHOGLYCERATE KINASE.

Mol	Chain	Residues	Atoms						ZeroOcc	AltConf	Trace
1	A	417	Total	C	N	O	S	Se	0	0	0
			3193	2024	546	612	3	8			
1	B	415	Total	C	N	O	S	Se	0	0	0
			3183	2018	544	610	3	8			
1	C	424	Total	C	N	O	S	Se	0	0	0
			3267	2068	566	621	3	9			

There are 30 discrepancies between the modelled and reference sequences:

Chain	Residue	Modelled	Actual	Comment	Reference
A	-8	GLY	-	EXPRESSION TAG	UNP P27362
A	-7	HIS	-	EXPRESSION TAG	UNP P27362
A	-6	SER	-	EXPRESSION TAG	UNP P27362
A	-5	MSE	-	EXPRESSION TAG	UNP P27362
A	-4	HIS	-	EXPRESSION TAG	UNP P27362
A	-3	HIS	-	EXPRESSION TAG	UNP P27362
A	-2	HIS	-	EXPRESSION TAG	UNP P27362
A	-1	HIS	-	EXPRESSION TAG	UNP P27362
A	0	HIS	-	EXPRESSION TAG	UNP P27362
A	1	HIS	-	EXPRESSION TAG	UNP P27362
B	-8	GLY	-	EXPRESSION TAG	UNP P27362
B	-7	HIS	-	EXPRESSION TAG	UNP P27362
B	-6	SER	-	EXPRESSION TAG	UNP P27362
B	-5	MSE	-	EXPRESSION TAG	UNP P27362
B	-4	HIS	-	EXPRESSION TAG	UNP P27362
B	-3	HIS	-	EXPRESSION TAG	UNP P27362
B	-2	HIS	-	EXPRESSION TAG	UNP P27362
B	-1	HIS	-	EXPRESSION TAG	UNP P27362
B	0	HIS	-	EXPRESSION TAG	UNP P27362
B	1	HIS	-	EXPRESSION TAG	UNP P27362
C	-8	GLY	-	EXPRESSION TAG	UNP P27362
C	-7	HIS	-	EXPRESSION TAG	UNP P27362
C	-6	SER	-	EXPRESSION TAG	UNP P27362

*Continued on next page...*

Continued from previous page...

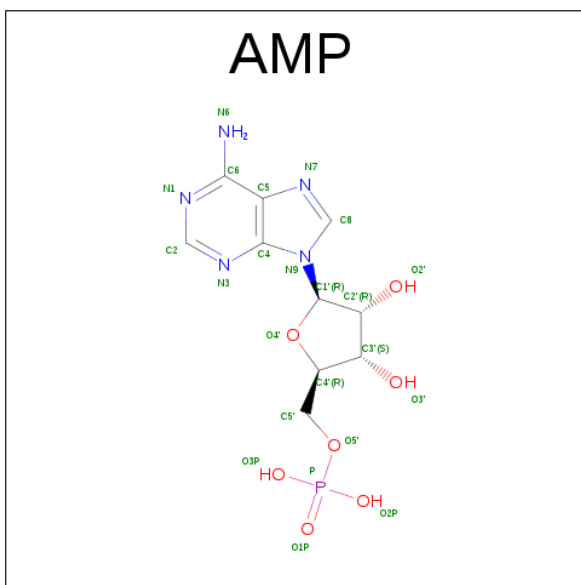
Chain	Residue	Modelled	Actual	Comment	Reference
C	-5	MSE	-	EXPRESSION TAG	UNP P27362
C	-4	HIS	-	EXPRESSION TAG	UNP P27362
C	-3	HIS	-	EXPRESSION TAG	UNP P27362
C	-2	HIS	-	EXPRESSION TAG	UNP P27362
C	-1	HIS	-	EXPRESSION TAG	UNP P27362
C	0	HIS	-	EXPRESSION TAG	UNP P27362
C	1	HIS	-	EXPRESSION TAG	UNP P27362

- Molecule 2 is SULFATE ION (three-letter code: SO4) (formula: O<sub>4</sub>S).



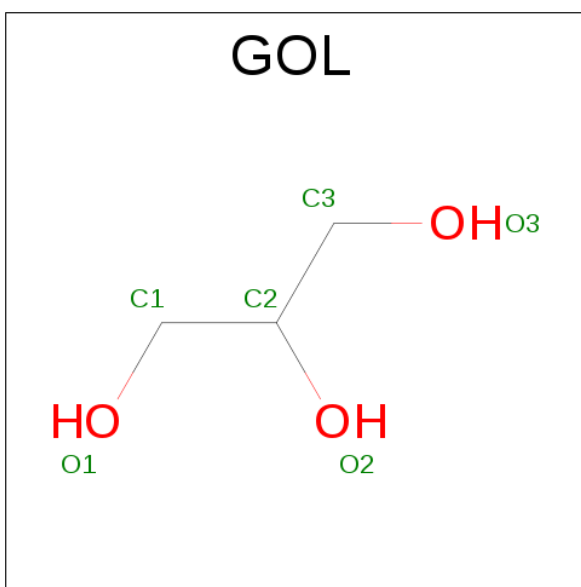
Mol	Chain	Residues	Atoms			ZeroOcc	AltConf
2	C	1	Total	O	S	0	0
			5	4	1		
2	A	1	Total	O	S	0	0
			5	4	1		
2	B	1	Total	O	S	0	0
			5	4	1		

- Molecule 3 is ADENOSINE MONOPHOSPHATE (three-letter code: AMP) (formula: C<sub>10</sub>H<sub>14</sub>N<sub>5</sub>O<sub>7</sub>P).



Mol	Chain	Residues	Atoms					ZeroOcc	AltConf
3	A	1	Total	C	N	O	P	0	0
			23	10	5	7	1		
3	B	1	Total	C	N	O	P	0	0
			23	10	5	7	1		
3	C	1	Total	C	N	O	P	0	0
			23	10	5	7	1		

- Molecule 4 is GLYCEROL (three-letter code: GOL) (formula:  $C_3H_8O_3$ ).



Mol	Chain	Residues	Atoms			ZeroOcc	AltConf
4	A	1	Total	C	O	0	0
			6	3	3		

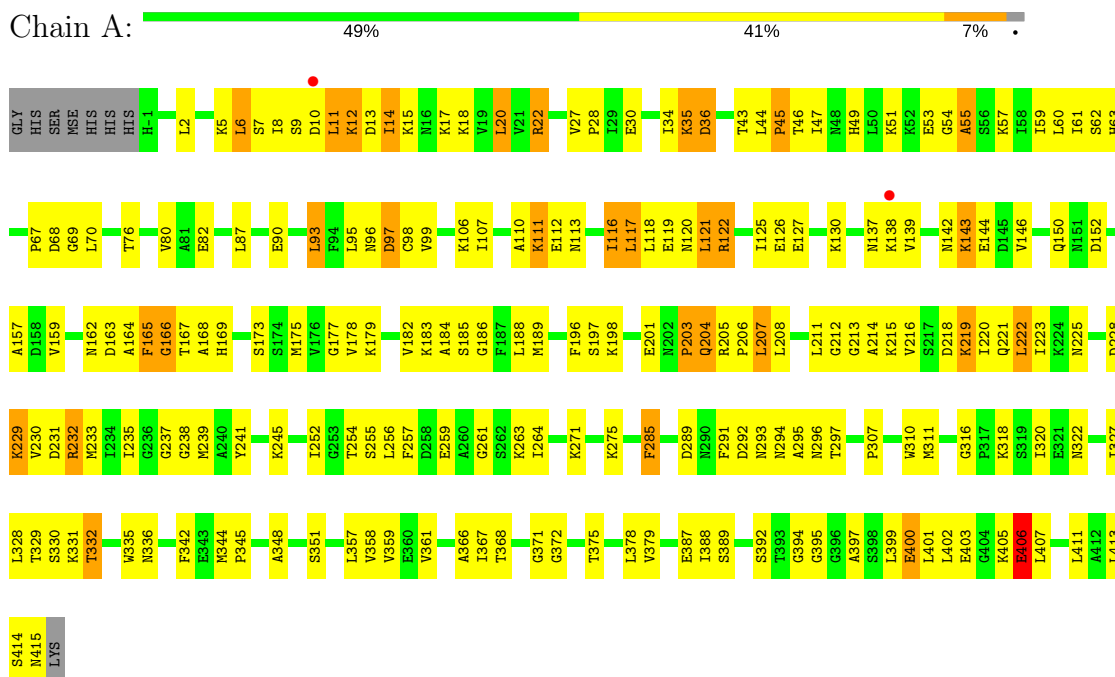
- Molecule 5 is water.

Mol	Chain	Residues	Atoms		ZeroOcc	AltConf
5	A	29	Total 29	O 29	0	0
5	B	21	Total 21	O 21	0	0
5	C	22	Total 22	O 22	0	0

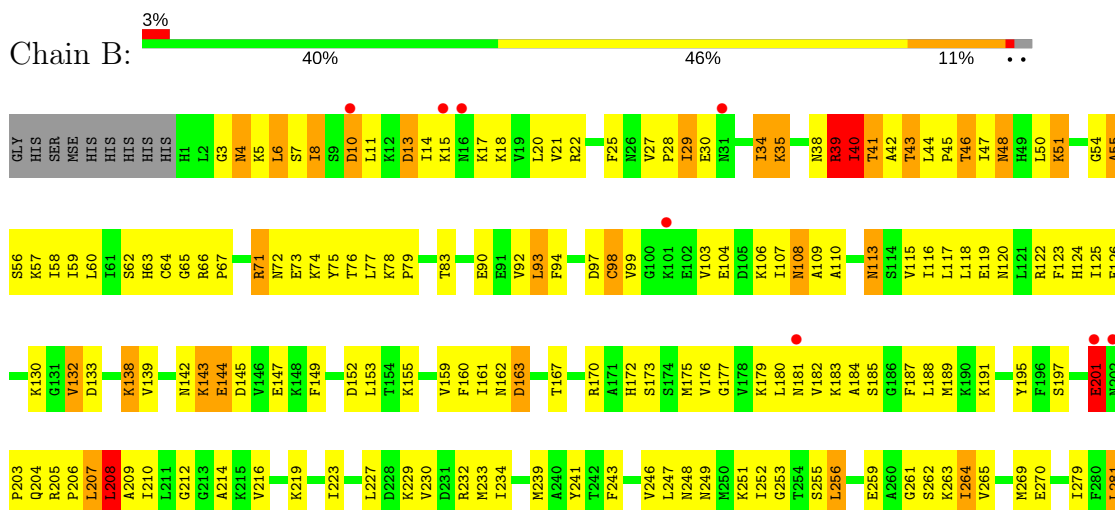
### 3 Residue-property plots

These plots are drawn for all protein, RNA and DNA chains in the entry. The first graphic for a chain summarises the proportions of the various outlier classes displayed in the second graphic. The second graphic shows the sequence view annotated by issues in geometry and electron density. Residues are color-coded according to the number of geometric quality criteria for which they contain at least one outlier: green = 0, yellow = 1, orange = 2 and red = 3 or more. A red dot above a residue indicates a poor fit to the electron density ( $RSRZ > 2$ ). Stretches of 2 or more consecutive residues without any outlier are shown as a green connector. Residues present in the sample, but not in the model, are shown in grey.

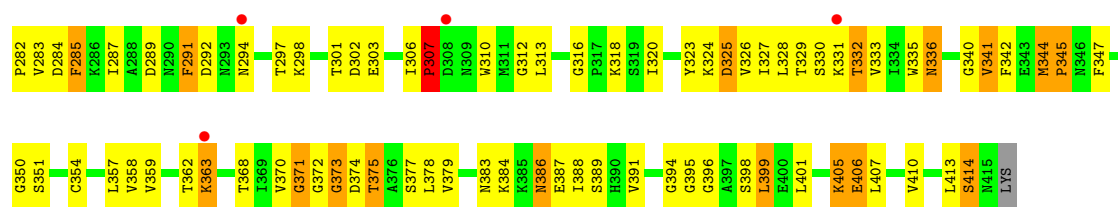
#### • Molecule 1: PHOSPHOGLYCERATE KINASE



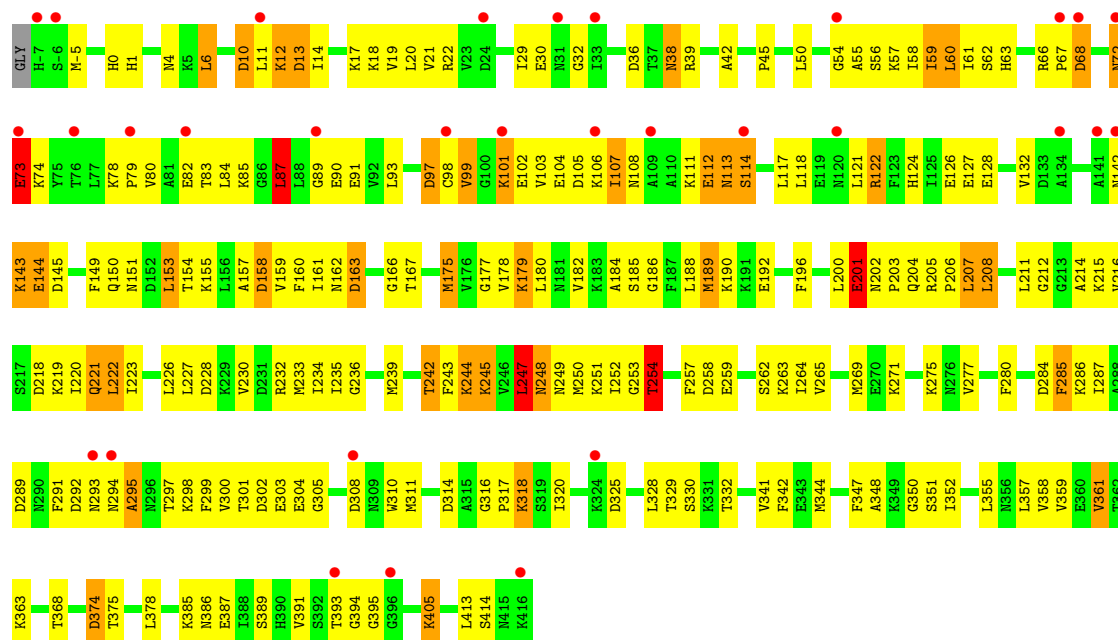
#### • Molecule 1: PHOSPHOGLYCERATE KINASE







• Molecule 1: PHOSPHOGLYCERATE KINASE



## 4 Data and refinement statistics

Property	Value	Source
Space group	I 2 2 2	Depositor
Cell constants a, b, c, $\alpha$ , $\beta$ , $\gamma$	119.03Å 147.61Å 206.49Å 90.00° 90.00° 90.00°	Depositor
Resolution (Å)	19.93 – 3.00 19.93 – 3.00	Depositor EDS
% Data completeness (in resolution range)	94.8 (19.93-3.00) 94.8 (19.93-3.00)	Depositor EDS
$R_{merge}$	(Not available)	Depositor
$R_{sym}$	0.06	Depositor
$\langle I/\sigma(I) \rangle$ <sup>1</sup>	5.54 (at 2.98Å)	Xtriage
Refinement program	CNS 1.0	Depositor
R, $R_{free}$	0.208 , 0.258 0.305 , 0.336	Depositor DCC
$R_{free}$ test set	3451 reflections (9.94%)	DCC
Wilson B-factor (Å <sup>2</sup> )	58.7	Xtriage
Anisotropy	0.145	Xtriage
Bulk solvent $k_{sol}$ (e/Å <sup>3</sup> ), $B_{sol}$ (Å <sup>2</sup> )	0.34 , 55.3	EDS
L-test for twinning <sup>2</sup>	$\langle  L  \rangle = 0.48$ , $\langle L^2 \rangle = 0.31$	Xtriage
Estimated twinning fraction	No twinning to report.	Xtriage
$F_o, F_c$ correlation	0.82	EDS
Total number of atoms	9805	wwPDB-VP
Average B, all atoms (Å <sup>2</sup> )	49.0	wwPDB-VP

Xtriage's analysis on translational NCS is as follows: *The largest off-origin peak in the Patterson function is 2.45% of the height of the origin peak. No significant pseudotranslation is detected.*

<sup>1</sup>Intensities estimated from amplitudes.

<sup>2</sup>Theoretical values of  $\langle |L| \rangle$ ,  $\langle L^2 \rangle$  for acentric reflections are 0.5, 0.333 respectively for untwinned datasets, and 0.375, 0.2 for perfectly twinned datasets.

## 5 Model quality

### 5.1 Standard geometry

Bond lengths and bond angles in the following residue types are not validated in this section: GOL, SO4, AMP

The Z score for a bond length (or angle) is the number of standard deviations the observed value is removed from the expected value. A bond length (or angle) with  $|Z| > 5$  is considered an outlier worth inspection. RMSZ is the root-mean-square of all Z scores of the bond lengths (or angles).

Mol	Chain	Bond lengths		Bond angles	
		RMSZ	# Z  >5	RMSZ	# Z  >5
1	A	0.80	0/3227	0.87	4/4329 (0.1%)
1	B	0.76	0/3217	0.87	3/4315 (0.1%)
1	C	0.78	0/3306	0.86	1/4431 (0.0%)
All	All	0.78	0/9750	0.86	8/13075 (0.1%)

Chiral center outliers are detected by calculating the chiral volume of a chiral center and verifying if the center is modelled as a planar moiety or with the opposite hand. A planarity outlier is detected by checking planarity of atoms in a peptide group, atoms in a mainchain group or atoms of a sidechain that are expected to be planar.

Mol	Chain	#Chirality outliers	#Planarity outliers
1	B	0	1

There are no bond length outliers.

All (8) bond angle outliers are listed below:

Mol	Chain	Res	Type	Atoms	Z	Observed(°)	Ideal(°)
1	B	208	LEU	CA-CB-CG	6.33	129.86	115.30
1	B	40	ILE	CG1-CB-CG2	-5.66	98.96	111.40
1	A	237	GLY	N-CA-C	5.60	127.09	113.10
1	C	87	LEU	CA-CB-CG	5.42	127.77	115.30
1	A	318	LYS	CD-CE-NZ	5.40	124.13	111.70
1	B	39	ARG	N-CA-C	-5.26	96.79	111.00
1	A	406	GLU	N-CA-C	5.07	124.68	111.00
1	A	275	LYS	CD-CE-NZ	5.04	123.30	111.70

There are no chirality outliers.

All (1) planarity outliers are listed below:

Mol	Chain	Res	Type	Group
1	B	195	TYR	Sidechain

## 5.2 Too-close contacts ⓘ

In the following table, the Non-H and H(model) columns list the number of non-hydrogen atoms and hydrogen atoms in the chain respectively. The H(added) column lists the number of hydrogen atoms added and optimized by MolProbity. The Clashes column lists the number of clashes within the asymmetric unit, whereas Symm-Clashes lists symmetry related clashes.

Mol	Chain	Non-H	H(model)	H(added)	Clashes	Symm-Clashes
1	A	3193	0	3296	193	0
1	B	3183	0	3292	222	2
1	C	3267	0	3361	196	2
2	A	5	0	0	0	0
2	B	5	0	0	0	0
2	C	5	0	0	0	0
3	A	23	0	12	1	0
3	B	23	0	12	2	0
3	C	23	0	12	3	0
4	A	6	0	4	0	0
5	A	29	0	0	0	0
5	B	21	0	0	2	0
5	C	22	0	0	2	0
All	All	9805	0	9989	603	2

The all-atom clashscore is defined as the number of clashes found per 1000 atoms (including hydrogen atoms). The all-atom clashscore for this structure is 31.

All (603) close contacts within the same asymmetric unit are listed below, sorted by their clash magnitude.

Atom-1	Atom-2	Interatomic distance (Å)	Clash overlap (Å)
1:C:250:MSE:HE2	1:C:252:ILE:HG22	1.41	1.02
1:B:42:ALA:HB1	1:B:188:LEU:HD21	1.40	1.02
1:A:93:LEU:HB3	1:A:116:ILE:HG23	1.43	0.98
1:B:264:ILE:HD13	1:B:264:ILE:H	1.28	0.96
1:A:331:LYS:HA	1:A:331:LYS:HE2	1.49	0.93
1:A:12:LYS:HD3	1:A:12:LYS:H	1.34	0.92
1:B:56:SER:O	1:B:57:LYS:HD2	1.68	0.92
1:A:14:ILE:H	1:A:14:ILE:HD12	1.33	0.92
1:B:46:THR:HG21	1:B:163:ASP:OD2	1.70	0.92
1:B:316:GLY:O	1:B:320:ILE:HG12	1.70	0.91

*Continued on next page...*

*Continued from previous page...*

Atom-1	Atom-2	Interatomic distance (Å)	Clash overlap (Å)
1:A:233:MSE:HE3	1:A:235:ILE:HD11	1.52	0.90
1:A:204:GLN:H	1:A:204:GLN:HE21	1.16	0.90
1:B:76:THR:HG23	1:B:119:GLU:OE1	1.73	0.87
1:B:336:ASN:HB2	1:B:371:GLY:HA3	1.57	0.86
1:A:2:LEU:HD21	1:A:401:LEU:HD21	1.60	0.84
1:C:342:PHE:HA	1:C:348:ALA:HB2	1.63	0.81
1:A:328:LEU:HD23	1:A:361:VAL:HG22	1.63	0.81
1:B:206:PRO:HG2	1:B:330:SER:HA	1.59	0.81
1:C:163:ASP:OD1	1:C:188:LEU:HB2	1.82	0.80
1:A:204:GLN:H	1:A:204:GLN:NE2	1.79	0.79
1:C:244:LYS:HE2	1:C:248:ASN:OD1	1.82	0.79
1:A:185:SER:HB2	1:A:189:MSE:HG2	1.64	0.79
1:B:359:VAL:HG13	1:B:387:GLU:HB3	1.62	0.79
1:C:21:VAL:HG12	1:C:161:ILE:HB	1.64	0.79
1:A:61:ILE:HB	1:A:121:LEU:HD11	1.64	0.79
1:A:327:ILE:HG22	1:A:361:VAL:HG21	1.64	0.79
1:A:204:GLN:O	1:A:332:THR:HG22	1.82	0.78
1:A:130:LYS:HB2	1:A:138:LYS:HE2	1.65	0.78
1:A:197:SER:HB2	1:A:201:GLU:OE1	1.84	0.78
1:B:256:LEU:H	1:B:256:LEU:HD23	1.48	0.78
1:B:333:VAL:HB	1:B:368:THR:HG22	1.66	0.77
1:B:373:GLY:O	1:B:375:THR:N	2.18	0.77
1:A:252:ILE:HG12	1:A:255:SER:HB2	1.66	0.76
1:B:39:ARG:O	1:B:40:ILE:HG12	1.85	0.76
1:C:207:LEU:CD2	1:C:230:VAL:HA	2.16	0.75
1:B:252:ILE:HG23	1:B:255:SER:HB2	1.69	0.75
1:B:264:ILE:N	1:B:264:ILE:HD13	2.01	0.75
1:B:107:ILE:HG13	1:B:108:ASN:N	2.02	0.75
1:B:6:LEU:HD23	1:B:7:SER:H	1.51	0.75
1:B:8:ILE:HA	1:B:11:LEU:HD13	1.68	0.74
1:A:203:PRO:HB2	1:A:332:THR:HG21	1.69	0.74
1:A:6:LEU:HD13	1:A:184:ALA:HB2	1.70	0.74
1:A:220:ILE:HG23	1:A:264:ILE:HG21	1.69	0.74
1:B:344:MSE:HE3	1:B:347:PHE:CE1	2.22	0.74
1:C:142:ASN:HB2	1:C:145:ASP:OD2	1.89	0.73
1:C:59:ILE:HD11	1:C:118:LEU:HD11	1.69	0.73
1:A:254:THR:HG21	1:A:311:MSE:HE2	1.69	0.73
1:C:348:ALA:O	1:C:352:ILE:HG13	1.88	0.73
1:A:60:LEU:HB2	1:A:117:LEU:HD23	1.70	0.73
1:A:99:VAL:HB	1:A:152:ASP:HB3	1.70	0.72
1:A:214:ALA:H	3:A:501:AMP:H5'1	1.52	0.72

*Continued on next page...*

*Continued from previous page...*

Atom-1	Atom-2	Interatomic distance (Å)	Clash overlap (Å)
1:C:72:ASN:HD22	1:C:72:ASN:N	1.86	0.72
1:B:313:LEU:HD13	1:B:344:MSE:CE	2.19	0.72
1:C:243:PHE:HE1	1:C:269:MSE:HE3	1.54	0.72
1:C:162:ASN:ND2	1:C:175:MSE:HE2	2.04	0.72
1:C:204:GLN:O	1:C:332:THR:HG22	1.91	0.71
1:B:232:ARG:HH12	1:B:329:THR:HB	1.54	0.71
1:A:18:LYS:O	1:A:157:ALA:HB1	1.90	0.71
1:A:230:VAL:HG12	1:A:231:ASP:N	2.06	0.71
1:B:204:GLN:HB2	1:B:331:LYS:HE3	1.73	0.70
1:C:142:ASN:HB3	1:C:144:GLU:OE2	1.91	0.70
1:A:221:GLN:HG3	1:A:403:GLU:HG2	1.74	0.70
1:C:300:VAL:HG13	1:C:304:GLU:HB2	1.73	0.70
1:B:92:VAL:HG22	1:B:115:VAL:CG2	2.21	0.69
1:B:30:GLU:OE1	1:B:35:LYS:HD2	1.92	0.69
1:C:215:LYS:HG3	1:C:218:ASP:OD1	1.91	0.69
1:C:228:ASP:HB3	1:C:275:LYS:HE3	1.72	0.69
1:C:223:ILE:HD11	1:C:239:MSE:HE1	1.74	0.69
1:C:163:ASP:OD2	1:C:186:GLY:HA3	1.93	0.69
1:C:121:LEU:HB3	1:C:127:GLU:HG3	1.75	0.69
1:A:328:LEU:HD23	1:A:361:VAL:CG2	2.23	0.68
1:C:368:THR:O	1:C:389:SER:HB2	1.93	0.68
1:C:329:THR:O	1:C:329:THR:HG22	1.92	0.68
1:B:197:SER:O	1:B:201:GLU:HB2	1.94	0.68
1:B:130:LYS:HD2	1:B:138:LYS:HE3	1.74	0.68
1:A:8:ILE:O	1:A:11:LEU:HB2	1.94	0.68
1:B:185:SER:HB2	1:B:189:MSE:HG2	1.76	0.68
1:A:328:LEU:HA	1:A:361:VAL:HG22	1.76	0.67
1:A:6:LEU:HD22	1:A:7:SER:N	2.09	0.67
1:C:242:THR:HG21	1:C:258:ASP:H	1.58	0.67
1:A:27:VAL:HG23	1:A:28:PRO:HD2	1.75	0.67
1:B:160:PHE:HB2	1:B:180:LEU:HD12	1.75	0.67
1:C:245:LYS:O	1:C:249:ASN:HA	1.95	0.66
1:C:207:LEU:HD23	1:C:230:VAL:HA	1.78	0.66
1:C:235:ILE:HG23	1:C:239:MSE:HE2	1.78	0.66
1:C:72:ASN:H	1:C:72:ASN:HD22	1.42	0.65
1:B:375:THR:O	1:B:379:VAL:HG23	1.96	0.65
1:C:214:ALA:H	3:C:503:AMP:C5'	2.09	0.65
1:C:251:LYS:NZ	1:C:252:ILE:H	1.94	0.65
1:C:73:GLU:H	1:C:73:GLU:CD	1.99	0.65
1:A:189:MSE:HE3	1:A:413:LEU:HD11	1.79	0.64
1:C:12:LYS:HA	1:C:12:LYS:HE2	1.79	0.64

*Continued on next page...*

*Continued from previous page...*

Atom-1	Atom-2	Interatomic distance (Å)	Clash overlap (Å)
1:A:57:LYS:HE2	1:A:110:ALA:O	1.97	0.64
1:A:95:LEU:HD22	1:A:106:LYS:HE2	1.78	0.64
1:C:328:LEU:HA	1:C:361:VAL:HG13	1.78	0.64
1:C:300:VAL:HG11	1:C:305:GLY:O	1.98	0.63
1:C:342:PHE:CD1	1:C:378:LEU:HD23	2.33	0.63
1:A:221:GLN:HE21	1:B:405:LYS:NZ	1.96	0.63
1:C:6:LEU:CD2	1:C:10:ASP:HB2	2.28	0.63
1:C:85:LYS:HE3	1:C:91:GLU:OE2	1.99	0.63
1:A:126:GLU:H	1:A:126:GLU:CD	2.00	0.63
1:C:90:GLU:O	1:C:91:GLU:HB3	1.99	0.62
1:C:29:ILE:HG13	1:C:30:GLU:N	2.14	0.62
1:A:218:ASP:O	1:A:219:LYS:HD3	2.00	0.62
1:C:82:GLU:O	1:C:85:LYS:HB2	2.00	0.62
1:C:18:LYS:O	1:C:157:ALA:HB1	1.99	0.62
1:A:143:LYS:H	1:A:143:LYS:CD	2.09	0.62
1:A:185:SER:HB2	1:A:189:MSE:CG	2.29	0.62
1:B:40:ILE:HD11	1:B:83:THR:HG21	1.82	0.61
1:A:264:ILE:O	1:A:264:ILE:HG22	1.99	0.61
1:A:207:LEU:HA	1:A:332:THR:HG23	1.81	0.61
1:A:256:LEU:HD21	1:B:147:GLU:OE1	2.01	0.61
1:A:142:ASN:HA	1:A:143:LYS:HE3	1.83	0.61
1:C:207:LEU:HD21	1:C:230:VAL:HG22	1.83	0.61
1:B:132:VAL:HG23	1:B:133:ASP:O	2.00	0.60
1:B:65:GLY:HA3	1:B:75:TYR:CD2	2.37	0.60
1:C:342:PHE:HA	1:C:348:ALA:CB	2.30	0.60
1:C:189:MSE:HE3	1:C:413:LEU:HD11	1.83	0.60
1:B:204:GLN:HG3	1:B:332:THR:HG22	1.81	0.60
1:A:97:ASP:O	1:A:118:LEU:HB3	2.02	0.60
1:B:44:LEU:N	1:B:45:PRO:HD2	2.15	0.60
1:C:162:ASN:CG	1:C:189:MSE:HE2	2.22	0.60
1:B:28:PRO:HB2	1:B:35:LYS:HB2	1.83	0.60
1:C:99:VAL:HG11	1:C:153:LEU:HD12	1.83	0.60
1:C:250:MSE:HG2	1:C:251:LYS:N	2.16	0.60
1:C:55:ALA:HB3	1:C:58:ILE:HD11	1.84	0.60
1:A:220:ILE:HD13	1:A:264:ILE:HG12	1.83	0.59
1:B:22:ARG:HH22	1:B:63:HIS:CD2	2.20	0.59
1:C:254:THR:HB	1:C:311:MSE:HB3	1.83	0.59
1:C:359:VAL:O	1:C:363:LYS:HD3	2.03	0.59
1:B:67:PRO:HG2	1:B:122:ARG:O	2.02	0.59
1:C:101:LYS:HD2	1:C:101:LYS:H	1.66	0.59
1:A:61:ILE:HG22	1:A:118:LEU:HD12	1.83	0.59

*Continued on next page...*

*Continued from previous page...*

Atom-1	Atom-2	Interatomic distance (Å)	Clash overlap (Å)
1:A:6:LEU:HD22	1:A:7:SER:H	1.67	0.58
1:A:214:ALA:HB1	1:A:256:LEU:HD13	1.86	0.58
1:C:214:ALA:H	3:C:503:AMP:H5'1	1.67	0.58
1:A:12:LYS:HD3	1:A:12:LYS:N	2.13	0.58
1:A:13:ASP:O	1:A:17:LYS:HD2	2.03	0.58
1:B:283:VAL:HG11	1:B:318:LYS:HG2	1.85	0.58
1:A:2:LEU:HD22	1:A:401:LEU:HD11	1.85	0.58
1:C:344:MSE:HE3	1:C:347:PHE:CD1	2.38	0.58
1:C:78:LYS:HB3	1:C:79:PRO:HD3	1.85	0.58
1:B:167:THR:HG22	1:B:167:THR:O	2.03	0.58
1:A:361:VAL:HG12	1:A:366:ALA:HB3	1.85	0.58
1:A:8:ILE:CD1	1:A:46:THR:HG23	2.34	0.58
1:A:62:SER:OG	1:A:63:HIS:N	2.34	0.58
1:C:301:THR:OG1	1:C:304:GLU:HG3	2.03	0.57
1:A:223:ILE:HG23	1:A:233:MSE:HE1	1.86	0.57
1:A:213:GLY:O	1:A:239:MSE:HG3	2.05	0.57
1:C:207:LEU:HA	1:C:332:THR:HG23	1.87	0.57
1:A:107:ILE:HG12	1:A:116:ILE:HD13	1.85	0.57
1:B:56:SER:O	1:B:57:LYS:CD	2.49	0.57
1:C:207:LEU:HD22	1:C:230:VAL:HA	1.84	0.57
1:A:119:GLU:HG3	1:A:120:ASN:N	2.19	0.57
1:C:242:THR:HG22	1:C:257:PHE:HA	1.86	0.57
1:C:259:GLU:O	1:C:262:SER:OG	2.21	0.57
1:B:210:ILE:HD11	1:B:327:ILE:HD11	1.87	0.57
1:C:11:LEU:HD21	1:C:184:ALA:HB2	1.86	0.57
1:C:232:ARG:HH22	1:C:329:THR:CG2	2.18	0.57
1:B:189:MSE:HE3	1:B:413:LEU:HD11	1.86	0.57
1:A:254:THR:O	1:A:254:THR:HG22	2.05	0.56
1:B:163:ASP:OD1	1:B:188:LEU:HB2	2.05	0.56
1:B:261:GLY:HA2	1:B:264:ILE:HD11	1.87	0.56
1:C:207:LEU:CD2	1:C:230:VAL:HG22	2.34	0.56
1:A:219:LYS:HZ1	1:A:239:MSE:HE2	1.69	0.56
1:A:254:THR:O	1:A:254:THR:CG2	2.53	0.56
1:C:160:PHE:HB2	1:C:180:LEU:HD12	1.87	0.56
1:C:234:ILE:HG12	1:C:280:PHE:HB2	1.87	0.56
1:A:219:LYS:NZ	1:A:239:MSE:HE2	2.19	0.56
1:A:295:ALA:O	1:A:297:THR:HG23	2.04	0.56
1:A:44:LEU:HD11	1:A:87:LEU:HD13	1.87	0.56
1:C:329:THR:CG2	1:C:329:THR:O	2.53	0.56
1:B:256:LEU:N	1:B:256:LEU:HD23	2.19	0.56
1:B:44:LEU:O	1:B:48:ASN:HB2	2.05	0.56

*Continued on next page...*



*Continued from previous page...*

Atom-1	Atom-2	Interatomic distance (Å)	Clash overlap (Å)
1:B:214:ALA:H	3:B:502:AMP:H5'1	1.70	0.56
1:C:101:LYS:CD	1:C:101:LYS:H	2.18	0.56
1:C:63:HIS:CG	1:C:122:ARG:HD2	2.41	0.56
1:A:59:ILE:HG12	1:A:107:ILE:HD13	1.87	0.56
1:A:13:ASP:HB3	1:A:17:LYS:NZ	2.21	0.56
1:A:165:PHE:O	1:A:167:THR:N	2.39	0.56
1:A:2:LEU:HD21	1:A:401:LEU:CD2	2.34	0.56
1:A:406:GLU:CG	1:A:411:LEU:HD11	2.36	0.56
1:A:169:HIS:HA	1:A:407:LEU:HD23	1.88	0.56
1:A:185:SER:CB	1:A:189:MSE:HG2	2.36	0.55
1:A:27:VAL:CG2	1:A:28:PRO:HD2	2.35	0.55
1:B:15:LYS:HA	1:B:54:GLY:HA3	1.88	0.55
1:B:329:THR:HG22	1:B:329:THR:O	2.06	0.55
1:A:230:VAL:HG12	1:A:231:ASP:H	1.71	0.55
1:C:143:LYS:H	1:C:143:LYS:CD	2.18	0.55
1:A:220:ILE:CG2	1:A:264:ILE:HG21	2.36	0.55
1:A:54:GLY:O	1:A:55:ALA:O	2.23	0.55
1:C:359:VAL:HG13	1:C:387:GLU:HB3	1.88	0.55
1:A:336:ASN:OD1	1:A:372:GLY:HA2	2.07	0.55
1:C:220:ILE:HD13	1:C:264:ILE:HG13	1.89	0.55
1:A:359:VAL:HG13	1:A:387:GLU:HB3	1.89	0.55
1:C:299:PHE:CD2	1:C:317:PRO:HD3	2.42	0.55
1:B:107:ILE:HG13	1:B:108:ASN:H	1.72	0.54
1:C:300:VAL:CG1	1:C:304:GLU:HB2	2.37	0.54
1:A:406:GLU:HG3	1:A:411:LEU:HD11	1.89	0.54
1:C:219:LYS:O	1:C:223:ILE:HG13	2.07	0.54
1:C:192:GLU:OE2	1:C:393:THR:HG22	2.07	0.54
1:B:328:LEU:HD21	1:B:357:LEU:HD23	1.89	0.54
1:B:152:ASP:O	1:B:153:LEU:C	2.45	0.54
1:B:265:VAL:O	1:B:269:MSE:HG2	2.08	0.54
1:C:215:LYS:O	1:C:219:LYS:NZ	2.40	0.54
1:B:395:GLY:HA2	1:B:398:SER:OG	2.08	0.54
1:A:137:ASN:O	1:A:139:VAL:HG23	2.08	0.54
1:A:14:ILE:N	1:A:14:ILE:HD12	2.13	0.54
1:A:400:GLU:HB3	1:A:405:LYS:HB2	1.88	0.54
1:B:204:GLN:H	1:B:332:THR:HG21	1.73	0.54
1:B:51:LYS:HD3	1:B:113:ASN:ND2	2.23	0.54
1:B:14:ILE:HD12	1:B:14:ILE:O	2.07	0.54
1:A:216:VAL:HG13	1:A:261:GLY:HA3	1.88	0.54
1:B:59:ILE:H	1:B:59:ILE:HD12	1.72	0.54
1:A:238:GLY:HA2	1:A:241:TYR:HD2	1.73	0.53

*Continued on next page...*

*Continued from previous page...*

Atom-1	Atom-2	Interatomic distance (Å)	Clash overlap (Å)
1:A:8:ILE:HD13	1:A:46:THR:HG23	1.90	0.53
1:C:357:LEU:O	1:C:361:VAL:HG22	2.09	0.53
1:A:166:GLY:HA2	1:A:397:ALA:HB3	1.90	0.53
1:B:46:THR:HG22	1:B:187:PHE:HB2	1.90	0.53
1:B:302:ASP:N	1:B:302:ASP:OD1	2.40	0.53
1:B:289:ASP:HB3	1:B:310:TRP:CZ2	2.43	0.53
1:C:177:GLY:O	1:C:179:LYS:HG2	2.08	0.53
1:A:163:ASP:CG	1:A:186:GLY:HA3	2.28	0.53
1:B:368:THR:O	1:B:389:SER:HB2	2.08	0.53
1:C:284:ASP:OD2	1:C:318:LYS:HB2	2.09	0.53
1:B:269:MSE:HE1	1:B:279:ILE:HG13	1.89	0.53
1:A:264:ILE:O	1:A:264:ILE:CG2	2.56	0.53
1:B:340:GLY:O	1:B:342:PHE:N	2.40	0.53
1:C:207:LEU:HD23	1:C:230:VAL:HG13	1.91	0.53
1:B:14:ILE:HA	1:B:17:LYS:HE2	1.91	0.53
1:A:22:ARG:NH2	1:A:63:HIS:ND1	2.51	0.53
1:B:29:ILE:HG13	1:B:30:GLU:N	2.24	0.53
1:B:406:GLU:O	1:B:407:LEU:CB	2.56	0.52
1:B:6:LEU:CD2	1:B:7:SER:H	2.21	0.52
1:C:211:LEU:HD13	1:C:223:ILE:HG12	1.89	0.52
1:A:205:ARG:HD2	1:A:231:ASP:OD2	2.10	0.52
1:B:107:ILE:CG1	1:B:108:ASN:N	2.71	0.52
1:B:117:LEU:HD23	1:B:117:LEU:C	2.29	0.52
1:A:344:MSE:CE	1:B:144:GLU:HG2	2.40	0.52
1:B:241:TYR:OH	1:B:312:GLY:HA3	2.09	0.52
1:C:82:GLU:HA	1:C:85:LYS:HD2	1.90	0.52
1:A:15:LYS:HA	1:A:54:GLY:HA3	1.91	0.52
1:A:254:THR:CG2	1:A:311:MSE:HE2	2.39	0.52
1:A:232:ARG:NH2	1:A:329:THR:HB	2.25	0.52
1:B:38:ASN:O	1:B:41:THR:HB	2.10	0.52
1:B:399:LEU:HD12	5:B:627:HOH:O	2.09	0.52
1:A:13:ASP:HB3	1:A:17:LYS:HZ1	1.74	0.52
1:B:359:VAL:CG1	1:B:387:GLU:HB3	2.36	0.52
1:A:204:GLN:N	1:A:204:GLN:HE21	1.96	0.52
1:B:216:VAL:HG13	1:B:261:GLY:HA3	1.92	0.52
1:A:14:ILE:N	1:A:14:ILE:CD1	2.72	0.52
1:A:289:ASP:HB3	1:A:310:TRP:CZ2	2.45	0.52
1:A:357:LEU:O	1:A:361:VAL:HG23	2.09	0.52
1:B:227:LEU:HG	1:B:233:MSE:HE1	1.92	0.52
1:C:6:LEU:HD21	1:C:10:ASP:HB2	1.92	0.52
1:C:189:MSE:O	1:C:190:LYS:C	2.49	0.52

*Continued on next page...*

*Continued from previous page...*

Atom-1	Atom-2	Interatomic distance (Å)	Clash overlap (Å)
1:A:8:ILE:HD11	1:A:186:GLY:HA2	1.92	0.52
1:C:97:ASP:N	1:C:97:ASP:OD1	2.43	0.52
1:B:320:ILE:HD12	1:B:350:GLY:HA2	1.91	0.51
1:B:204:GLN:O	1:B:332:THR:HG22	2.10	0.51
1:C:132:VAL:O	1:C:132:VAL:HG23	2.10	0.51
1:C:259:GLU:HA	1:C:259:GLU:OE1	2.10	0.51
1:C:85:LYS:HG2	1:C:91:GLU:HA	1.92	0.51
1:B:406:GLU:O	1:B:407:LEU:HB2	2.10	0.51
1:C:208:LEU:HD23	1:C:233:MSE:HA	1.93	0.51
1:B:126:GLU:HG3	1:B:149:PHE:HB2	1.92	0.51
1:C:243:PHE:CE1	1:C:269:MSE:HE3	2.40	0.51
1:C:314:ASP:OD2	1:C:350:GLY:HA3	2.11	0.51
1:B:206:PRO:HG3	1:B:232:ARG:NH2	2.26	0.51
1:C:99:VAL:CG1	1:C:153:LEU:HD12	2.41	0.51
1:C:242:THR:CG2	1:C:258:ASP:H	2.22	0.51
1:C:72:ASN:O	1:C:74:LYS:N	2.44	0.51
1:A:35:LYS:O	1:A:36:ASP:HB2	2.10	0.51
1:A:331:LYS:O	1:A:366:ALA:HB1	2.11	0.51
1:A:67:PRO:O	1:A:68:ASP:HB2	2.11	0.51
1:B:170:ARG:HB3	1:B:172:HIS:CD2	2.45	0.51
1:B:64:CYS:HB2	1:B:77:LEU:HD21	1.93	0.51
1:B:51:LYS:NZ	1:B:90:GLU:OE2	2.32	0.51
1:C:63:HIS:HB2	1:C:122:ARG:HD2	1.91	0.51
1:C:385:LYS:HE3	1:C:391:VAL:HB	1.93	0.51
1:B:117:LEU:HD23	1:B:118:LEU:N	2.26	0.51
1:B:6:LEU:HD23	1:B:7:SER:N	2.21	0.50
1:B:103:VAL:HG23	1:B:104:GLU:N	2.26	0.50
1:B:5:LYS:HE3	1:B:410:VAL:O	2.11	0.50
1:A:331:LYS:CE	1:A:331:LYS:HA	2.32	0.50
1:B:143:LYS:CD	1:B:143:LYS:H	2.24	0.50
1:B:143:LYS:N	1:B:143:LYS:CD	2.75	0.50
1:B:185:SER:HB2	1:B:189:MSE:CG	2.41	0.50
1:B:287:ILE:HD12	1:B:307:PRO:HD2	1.92	0.50
1:C:264:ILE:O	1:C:264:ILE:HG22	2.11	0.50
1:C:6:LEU:HD23	1:C:10:ASP:HB2	1.94	0.50
1:A:230:VAL:CG1	1:A:231:ASP:N	2.75	0.50
1:A:316:GLY:O	1:A:320:ILE:HG13	2.11	0.50
1:B:170:ARG:HB3	1:B:172:HIS:NE2	2.27	0.50
1:A:2:LEU:CD2	1:A:401:LEU:HD11	2.42	0.50
1:A:221:GLN:HE21	1:B:405:LYS:HZ3	1.58	0.50
1:C:185:SER:HB2	1:C:189:MSE:CB	2.42	0.50

*Continued on next page...*

*Continued from previous page...*

Atom-1	Atom-2	Interatomic distance (Å)	Clash overlap (Å)
1:C:121:LEU:HB3	1:C:127:GLU:CG	2.41	0.50
1:C:159:VAL:HG22	1:C:182:VAL:HB	1.94	0.50
1:C:285:PHE:CD1	1:C:285:PHE:N	2.80	0.50
1:B:126:GLU:CD	1:B:126:GLU:H	2.15	0.50
1:B:256:LEU:H	1:B:256:LEU:CD2	2.14	0.50
1:C:247:LEU:HD11	1:C:265:VAL:HG12	1.93	0.50
1:C:204:GLN:O	1:C:332:THR:CG2	2.58	0.50
1:A:164:ALA:O	1:A:175:MSE:HE1	2.12	0.49
1:B:313:LEU:HD12	1:B:347:PHE:CZ	2.47	0.49
1:C:202:ASN:CG	1:C:202:ASN:O	2.49	0.49
1:C:358:VAL:O	1:C:361:VAL:HG23	2.11	0.49
1:B:160:PHE:HB3	1:B:183:LYS:HG2	1.94	0.49
1:C:230:VAL:HG12	1:C:232:ARG:H	1.76	0.49
1:C:228:ASP:HB3	1:C:275:LYS:CE	2.39	0.49
1:A:125:ILE:HG13	1:A:130:LYS:O	2.12	0.49
1:A:34:ILE:HD11	1:A:80:VAL:HG22	1.95	0.49
1:B:354:CYS:O	1:B:358:VAL:HG23	2.12	0.49
1:A:327:ILE:HG22	1:A:361:VAL:CG2	2.39	0.49
1:A:44:LEU:HB2	1:A:45:PRO:HD3	1.94	0.49
1:B:223:ILE:HD11	1:B:239:MSE:HE1	1.93	0.49
1:B:388:ILE:H	1:B:388:ILE:HD12	1.77	0.49
1:A:368:THR:O	1:A:389:SER:HB2	2.13	0.49
1:B:99:VAL:HG12	1:B:153:LEU:HD23	1.94	0.49
1:C:316:GLY:O	1:C:320:ILE:HG13	2.13	0.49
1:B:388:ILE:N	1:B:388:ILE:HD12	2.28	0.49
1:B:251:LYS:HE3	1:B:253:GLY:H	1.77	0.48
1:B:335:TRP:C	1:B:335:TRP:CD1	2.86	0.48
1:B:22:ARG:NH1	1:B:62:SER:HA	2.28	0.48
1:C:212:GLY:HA2	1:C:236:GLY:O	2.13	0.48
1:B:378:LEU:HD22	1:B:378:LEU:O	2.13	0.48
1:C:251:LYS:HZ2	1:C:252:ILE:H	1.58	0.48
1:B:208:LEU:HD22	1:B:209:ALA:N	2.28	0.48
1:B:406:GLU:OE1	1:B:406:GLU:HA	2.13	0.48
1:B:54:GLY:O	1:B:55:ALA:HB3	2.14	0.48
1:B:92:VAL:HG22	1:B:115:VAL:HG23	1.92	0.48
1:C:11:LEU:HD22	1:C:182:VAL:HG11	1.95	0.48
1:B:297:THR:HA	1:B:310:TRP:HZ3	1.78	0.48
1:C:292:ASP:OD2	1:C:293:ASN:N	2.46	0.48
1:A:110:ALA:O	1:A:111:LYS:C	2.50	0.48
1:A:164:ALA:C	1:A:165:PHE:O	2.50	0.48
1:A:289:ASP:OD2	1:A:296:ASN:HB2	2.14	0.48

*Continued on next page...*

*Continued from previous page...*

Atom-1	Atom-2	Interatomic distance (Å)	Clash overlap (Å)
1:C:185:SER:HB2	1:C:189:MSE:HB2	1.95	0.48
1:A:143:LYS:HE3	1:A:143:LYS:H	1.78	0.48
1:B:104:GLU:O	1:B:108:ASN:HB2	2.13	0.48
1:B:51:LYS:HD3	1:B:113:ASN:HD21	1.79	0.48
1:B:11:LEU:HD12	1:B:11:LEU:N	2.28	0.48
1:B:14:ILE:HA	1:B:17:LYS:CE	2.43	0.48
1:B:307:PRO:HB2	1:B:310:TRP:HB2	1.96	0.48
1:C:162:ASN:O	1:C:189:MSE:HG3	2.14	0.48
1:A:119:GLU:CG	1:A:120:ASN:N	2.76	0.48
1:A:143:LYS:CE	1:A:143:LYS:H	2.27	0.47
1:B:324:LYS:O	1:B:328:LEU:HG	2.14	0.47
1:C:227:LEU:HB3	1:C:271:LYS:HD3	1.96	0.47
1:A:119:GLU:CG	1:A:120:ASN:H	2.26	0.47
1:C:230:VAL:HG12	1:C:232:ARG:N	2.30	0.47
1:A:5:LYS:HD2	1:A:414:SER:O	2.14	0.47
1:B:138:LYS:HD2	1:B:139:VAL:H	1.79	0.47
1:B:368:THR:OG1	1:B:388:ILE:HG23	2.14	0.47
1:A:285:PHE:N	1:A:285:PHE:CD1	2.82	0.47
1:B:106:LYS:O	1:B:110:ALA:HB2	2.15	0.47
1:C:102:GLU:O	1:C:105:ASP:HB2	2.13	0.47
1:B:108:ASN:O	1:B:109:ALA:HB3	2.13	0.47
1:C:144:GLU:CD	1:C:144:GLU:H	2.18	0.47
1:C:289:ASP:HB3	1:C:310:TRP:CE2	2.50	0.47
1:C:60:LEU:HD12	1:C:117:LEU:HD13	1.97	0.47
1:A:61:ILE:CG2	1:A:118:LEU:HD12	2.45	0.47
1:A:163:ASP:OD2	1:A:188:LEU:HB2	2.15	0.47
1:B:384:LYS:HD3	1:B:387:GLU:HG3	1.95	0.47
1:C:101:LYS:N	1:C:101:LYS:HD2	2.28	0.47
1:A:144:GLU:HG3	1:B:291:PHE:CE2	2.49	0.47
1:B:143:LYS:HE2	1:B:143:LYS:H	1.80	0.47
1:C:142:ASN:HA	1:C:143:LYS:HE3	1.97	0.47
1:A:137:ASN:OD1	1:B:28:PRO:HA	2.15	0.47
1:B:160:PHE:O	1:B:183:LYS:HA	2.15	0.47
1:C:251:LYS:HZ1	1:C:253:GLY:H	1.63	0.47
1:A:43:THR:O	1:A:47:ILE:HG13	2.15	0.46
1:B:11:LEU:HD11	1:B:184:ALA:CB	2.45	0.46
1:B:119:GLU:HG3	1:B:120:ASN:N	2.29	0.46
1:B:78:LYS:N	1:B:79:PRO:HD2	2.31	0.46
1:C:151:ASN:O	1:C:155:LYS:HG3	2.16	0.46
1:C:227:LEU:HD23	1:C:227:LEU:HA	1.72	0.46
1:C:301:THR:O	1:C:302:ASP:C	2.51	0.46

*Continued on next page...*

*Continued from previous page...*

Atom-1	Atom-2	Interatomic distance (Å)	Clash overlap (Å)
1:A:344:MSE:HE1	1:B:144:GLU:HG2	1.97	0.46
1:B:177:GLY:O	1:B:179:LYS:HG2	2.15	0.46
1:C:214:ALA:H	3:C:503:AMP:H5'2	1.78	0.46
1:B:205:ARG:HA	1:B:206:PRO:C	2.35	0.46
1:B:78:LYS:HG3	1:B:94:PHE:CD2	2.51	0.46
1:C:355:LEU:O	1:C:359:VAL:HG23	2.15	0.46
1:A:30:GLU:HB2	1:A:35:LYS:NZ	2.29	0.46
1:B:13:ASP:O	1:B:17:LYS:NZ	2.40	0.46
1:B:159:VAL:HG13	1:B:182:VAL:HB	1.97	0.46
1:B:93:LEU:HB3	1:B:116:ILE:HG23	1.96	0.46
1:B:14:ILE:HA	1:B:17:LYS:NZ	2.31	0.46
1:B:18:LYS:NZ	1:B:108:ASN:ND2	2.64	0.46
1:A:130:LYS:CB	1:A:138:LYS:HE2	2.42	0.46
1:A:183:LYS:HE3	1:B:259:GLU:OE1	2.16	0.46
1:C:163:ASP:CG	1:C:186:GLY:HA3	2.36	0.46
1:A:238:GLY:HA2	1:A:241:TYR:CD2	2.51	0.46
1:A:30:GLU:HB2	1:A:35:LYS:HZ2	1.81	0.46
1:A:62:SER:O	1:A:121:LEU:HD13	2.16	0.46
1:B:243:PHE:O	1:B:247:LEU:HB2	2.16	0.46
1:B:261:GLY:O	1:B:262:SER:C	2.53	0.46
1:C:108:ASN:HD22	1:C:108:ASN:HA	1.57	0.46
1:C:227:LEU:CD2	1:C:233:MSE:HE3	2.45	0.46
1:B:176:VAL:HG12	1:B:176:VAL:O	2.16	0.46
1:C:14:ILE:O	1:C:17:LYS:HG3	2.15	0.46
1:A:119:GLU:HG3	1:A:120:ASN:H	1.81	0.46
1:A:205:ARG:HB3	1:A:206:PRO:HA	1.98	0.46
1:B:142:ASN:HB2	1:B:145:ASP:OD2	2.15	0.46
1:B:342:PHE:CE1	1:B:378:LEU:HB2	2.51	0.46
1:B:313:LEU:HB2	1:B:347:PHE:CD2	2.51	0.46
1:B:6:LEU:CD2	1:B:7:SER:N	2.79	0.45
1:C:206:PRO:HG2	1:C:330:SER:HA	1.97	0.45
1:A:177:GLY:O	1:A:179:LYS:N	2.50	0.45
1:B:58:ILE:HB	1:B:115:VAL:HG12	1.97	0.45
1:B:298:LYS:HE2	1:B:310:TRP:CH2	2.51	0.45
1:B:344:MSE:HE3	1:B:347:PHE:CD1	2.51	0.45
1:A:168:ALA:HA	1:A:175:MSE:HE2	1.98	0.45
1:A:252:ILE:CG1	1:A:255:SER:HB2	2.40	0.45
1:A:328:LEU:HA	1:A:361:VAL:CG2	2.44	0.45
1:B:39:ARG:C	1:B:40:ILE:HG23	2.37	0.45
1:C:126:GLU:HG3	1:C:149:PHE:HB2	1.99	0.45
1:C:68:ASP:HB2	1:C:132:VAL:HG22	1.98	0.45

*Continued on next page...*

*Continued from previous page...*

Atom-1	Atom-2	Interatomic distance (Å)	Clash overlap (Å)
1:C:178:VAL:HG12	1:C:178:VAL:O	2.17	0.45
1:A:293:ASN:O	1:A:294:ASN:HB3	2.16	0.45
1:B:313:LEU:HD13	1:B:344:MSE:HE1	1.95	0.45
1:C:302:ASP:OD1	1:C:303:GLU:N	2.50	0.45
1:A:159:VAL:HG13	1:A:182:VAL:HB	1.99	0.45
1:A:400:GLU:HA	1:A:403:GLU:HB2	1.98	0.45
1:A:67:PRO:CG	1:A:122:ARG:HB3	2.46	0.45
1:A:212:GLY:CA	1:A:239:MSE:HE3	2.46	0.45
1:B:247:LEU:HD11	1:B:269:MSE:HG3	1.99	0.45
1:B:407:LEU:HD23	1:B:410:VAL:HG21	1.98	0.45
1:C:162:ASN:HD21	1:C:175:MSE:HE2	1.80	0.45
1:C:355:LEU:HD22	1:C:378:LEU:HD13	1.99	0.45
1:B:22:ARG:HH12	1:B:63:HIS:HD2	1.64	0.45
1:C:243:PHE:CD1	1:C:265:VAL:HG13	2.52	0.45
1:A:168:ALA:CA	1:A:175:MSE:HE2	2.46	0.44
1:A:212:GLY:C	1:A:239:MSE:HE3	2.38	0.44
1:B:47:ILE:HD11	1:B:60:LEU:HD11	1.99	0.44
1:B:72:ASN:O	1:B:74:LYS:N	2.50	0.44
1:C:57:LYS:NZ	1:C:107:ILE:O	2.44	0.44
1:C:61:ILE:HG22	1:C:118:LEU:HD12	1.99	0.44
1:C:162:ASN:OD1	1:C:189:MSE:HE2	2.18	0.44
1:C:287:ILE:HG13	1:C:310:TRP:HE3	1.83	0.44
1:C:42:ALA:O	1:C:45:PRO:HD2	2.15	0.44
1:B:261:GLY:O	1:B:264:ILE:HD13	2.18	0.44
1:B:285:PHE:N	1:B:285:PHE:CD1	2.85	0.44
1:B:344:MSE:CE	1:B:347:PHE:CD1	3.00	0.44
1:C:67:PRO:O	1:C:68:ASP:C	2.55	0.44
1:A:127:GLU:HA	1:A:173:SER:HB2	2.00	0.44
1:A:211:LEU:CD1	1:A:223:ILE:HG12	2.47	0.44
1:A:307:PRO:HG2	1:A:310:TRP:CG	2.52	0.44
1:B:11:LEU:N	1:B:11:LEU:CD1	2.79	0.44
1:B:125:ILE:HG23	1:B:126:GLU:N	2.32	0.44
1:C:90:GLU:O	1:C:91:GLU:CB	2.64	0.44
1:A:59:ILE:HG12	1:A:107:ILE:CD1	2.48	0.44
1:A:8:ILE:HG13	1:A:185:SER:O	2.17	0.44
1:B:207:LEU:HD13	1:B:230:VAL:HA	1.99	0.44
1:B:21:VAL:HA	1:B:161:ILE:O	2.17	0.44
1:A:20:LEU:HD23	1:A:59:ILE:O	2.17	0.44
1:B:107:ILE:CG1	1:B:108:ASN:H	2.30	0.44
1:C:150:GLN:O	1:C:154:THR:OG1	2.26	0.44
1:C:263:LYS:O	1:C:264:ILE:HD13	2.17	0.44

*Continued on next page...*



*Continued from previous page...*

Atom-1	Atom-2	Interatomic distance (Å)	Clash overlap (Å)
1:C:287:ILE:HG13	1:C:310:TRP:CE3	2.53	0.44
1:C:54:GLY:O	1:C:55:ALA:C	2.56	0.44
1:A:162:ASN:HD21	1:A:175:MSE:HE3	1.83	0.44
1:C:286:LYS:HE2	1:C:297:THR:HB	2.00	0.44
1:C:29:ILE:HD11	1:C:32:GLY:C	2.39	0.44
1:B:301:THR:C	1:B:303:GLU:N	2.71	0.44
1:C:251:LYS:HZ1	1:C:252:ILE:H	1.62	0.44
1:A:8:ILE:HD11	1:A:46:THR:HG23	2.00	0.43
1:B:359:VAL:O	1:B:362:THR:HB	2.18	0.43
1:B:248:ASN:O	1:B:249:ASN:HB3	2.16	0.43
1:B:284:ASP:HA	1:B:301:THR:HA	2.00	0.43
1:C:0:HIS:O	1:C:1:HIS:HB2	2.17	0.43
1:C:201:GLU:O	1:C:203:PRO:HD3	2.17	0.43
1:A:146:VAL:O	1:A:150:GLN:HG3	2.19	0.43
1:A:49:HIS:O	1:A:53:GLU:HG2	2.18	0.43
1:C:299:PHE:CE2	1:C:317:PRO:HD3	2.53	0.43
1:C:36:ASP:OD2	1:C:38:ASN:HB2	2.19	0.43
1:A:165:PHE:C	1:A:167:THR:H	2.22	0.43
1:B:370:VAL:HG21	1:B:379:VAL:HG21	2.00	0.43
1:A:165:PHE:CD2	1:A:166:GLY:N	2.83	0.43
1:B:98:CYS:SG	1:B:124:HIS:CE1	3.11	0.43
1:B:306:ILE:O	1:B:307:PRO:O	2.35	0.43
1:C:342:PHE:HD1	1:C:378:LEU:HD23	1.77	0.43
1:C:63:HIS:CB	1:C:122:ARG:HD2	2.49	0.43
1:C:300:VAL:HG12	1:C:301:THR:N	2.33	0.43
1:C:66:ARG:O	1:C:68:ASP:N	2.50	0.43
1:A:14:ILE:H	1:A:14:ILE:CD1	2.08	0.43
1:A:162:ASN:HB3	1:A:189:MSE:HE2	2.01	0.43
1:C:232:ARG:HH22	1:C:329:THR:HG22	1.84	0.43
1:A:99:VAL:CB	1:A:152:ASP:HB3	2.44	0.43
1:A:51:LYS:HE2	1:A:90:GLU:OE1	2.18	0.43
1:B:59:ILE:N	1:B:59:ILE:HD12	2.33	0.43
1:A:228:ASP:HB3	1:A:271:LYS:NZ	2.33	0.43
1:A:206:PRO:HG2	1:A:330:SER:HA	2.00	0.43
1:A:342:PHE:HA	1:A:348:ALA:HB2	2.01	0.43
1:A:169:HIS:CA	1:A:407:LEU:HD23	2.49	0.43
1:A:51:LYS:CE	1:A:90:GLU:OE1	2.67	0.43
1:B:108:ASN:HA	1:B:108:ASN:HD22	1.53	0.43
1:B:71:ARG:HD2	1:B:123:PHE:CD2	2.54	0.43
1:B:234:ILE:HD11	1:B:326:VAL:HG11	2.00	0.43
1:C:201:GLU:C	1:C:203:PRO:HD3	2.39	0.43

*Continued on next page...*



*Continued from previous page...*

Atom-1	Atom-2	Interatomic distance (Å)	Clash overlap (Å)
1:A:198:LYS:HD3	1:A:367:ILE:HD13	2.01	0.42
1:B:116:ILE:N	1:B:116:ILE:HD12	2.34	0.42
1:B:8:ILE:CA	1:B:11:LEU:HD13	2.44	0.42
1:A:169:HIS:HB3	1:A:407:LEU:CD2	2.48	0.42
1:A:379:VAL:HG11	1:A:388:ILE:HD12	2.00	0.42
1:A:222:LEU:HD23	1:A:402:LEU:O	2.19	0.42
1:A:11:LEU:HA	1:A:11:LEU:HD23	1.86	0.42
1:A:225:ASN:CG	1:A:225:ASN:O	2.58	0.42
1:C:166:GLY:HA2	1:C:394:GLY:HA2	2.01	0.42
1:B:264:ILE:N	1:B:264:ILE:CD1	2.73	0.42
1:C:132:VAL:CG2	1:C:132:VAL:O	2.66	0.42
1:C:294:ASN:O	1:C:295:ALA:C	2.58	0.42
1:C:328:LEU:HD21	1:C:357:LEU:HD23	2.00	0.42
1:C:56:SER:O	1:C:57:LYS:HG2	2.19	0.42
1:C:61:ILE:HG13	1:C:61:ILE:O	2.19	0.42
1:C:80:VAL:O	1:C:84:LEU:HG	2.20	0.42
1:B:98:CYS:SG	1:B:124:HIS:ND1	2.87	0.42
1:C:221:GLN:OE1	1:C:405:LYS:HE2	2.18	0.42
1:C:83:THR:O	1:C:87:LEU:HD22	2.20	0.42
1:A:69:GLY:O	1:A:70:LEU:HD23	2.19	0.42
1:B:167:THR:CG2	1:B:167:THR:O	2.68	0.42
1:C:294:ASN:O	1:C:295:ALA:O	2.37	0.42
1:C:56:SER:C	1:C:57:LYS:HG2	2.40	0.42
1:A:169:HIS:HB3	1:A:407:LEU:HD23	2.02	0.42
1:A:406:GLU:HG2	1:A:411:LEU:HD11	2.00	0.42
1:A:9:SER:O	1:A:10:ASP:HB2	2.19	0.42
1:B:170:ARG:HG3	1:B:170:ARG:HH21	1.84	0.42
1:C:112:GLU:O	1:C:114:SER:N	2.53	0.42
1:C:98:CYS:SG	1:C:124:HIS:CD2	3.13	0.42
1:C:374:ASP:HB2	5:C:626:HOH:O	2.19	0.42
1:A:392:SER:C	1:A:394:GLY:H	2.23	0.42
1:B:40:ILE:O	1:B:40:ILE:HG13	2.19	0.42
1:B:152:ASP:O	1:B:155:LYS:HG2	2.20	0.42
1:B:76:THR:HG22	1:B:78:LYS:H	1.84	0.42
1:B:98:CYS:HG	1:B:124:HIS:CE1	2.36	0.42
1:A:130:LYS:HD3	1:A:138:LYS:HE3	2.02	0.41
1:A:164:ALA:O	1:A:165:PHE:O	2.38	0.41
1:A:215:LYS:HB3	1:A:218:ASP:OD1	2.20	0.41
1:A:375:THR:O	1:A:378:LEU:HB3	2.20	0.41
1:B:167:THR:HB	1:B:175:MSE:HE3	2.01	0.41
1:B:289:ASP:HB3	1:B:310:TRP:CE2	2.55	0.41

*Continued on next page...*

*Continued from previous page...*

Atom-1	Atom-2	Interatomic distance (Å)	Clash overlap (Å)
1:B:313:LEU:HD22	1:B:341:VAL:HG21	2.01	0.41
1:B:25:PHE:CD2	1:B:40:ILE:HG22	2.54	0.41
1:B:281:LEU:HD23	1:B:282:PRO:HD2	2.02	0.41
1:B:325:ASP:OD1	1:B:325:ASP:N	2.53	0.41
1:C:72:ASN:ND2	1:C:72:ASN:O	2.53	0.41
1:B:298:LYS:HG2	1:B:310:TRP:CZ3	2.55	0.41
1:B:35:LYS:HE3	1:B:35:LYS:HA	2.03	0.41
1:C:298:LYS:HB2	1:C:298:LYS:HE3	1.87	0.41
1:C:301:THR:O	1:C:304:GLU:N	2.53	0.41
1:A:197:SER:O	1:A:201:GLU:HB2	2.21	0.41
1:B:63:HIS:HB2	1:B:122:ARG:HD3	2.02	0.41
1:B:230:VAL:CG1	1:B:232:ARG:O	2.68	0.41
1:B:261:GLY:C	1:B:263:LYS:N	2.72	0.41
1:B:370:VAL:HB	1:B:391:VAL:HG22	2.02	0.41
1:C:128:GLU:HB2	5:C:618:HOH:O	2.20	0.41
1:C:19:VAL:HG21	1:C:50:LEU:CD2	2.51	0.41
1:B:162:ASN:O	1:B:189:MSE:HE2	2.20	0.41
1:A:44:LEU:N	1:A:45:PRO:CD	2.83	0.41
1:C:208:LEU:HD23	1:C:232:ARG:O	2.21	0.41
1:A:329:THR:HG22	1:A:329:THR:O	2.20	0.41
1:B:261:GLY:HA2	1:B:264:ILE:CD1	2.51	0.41
1:C:18:LYS:N	1:C:158:ASP:OD1	2.50	0.41
1:B:363:LYS:HB3	1:B:363:LYS:NZ	2.35	0.41
1:B:395:GLY:O	1:B:396:GLY:C	2.59	0.41
1:B:7:SER:O	1:B:10:ASP:HB3	2.20	0.41
1:C:103:VAL:C	1:C:105:ASP:N	2.74	0.41
1:A:196:PHE:HB3	1:A:401:LEU:HD21	2.03	0.41
1:A:76:THR:HA	1:A:119:GLU:OE2	2.21	0.41
1:B:65:GLY:HA3	1:B:75:TYR:CE2	2.56	0.41
1:C:20:LEU:HD12	1:C:59:ILE:O	2.20	0.41
1:B:204:GLN:O	1:B:331:LYS:HB2	2.21	0.41
1:C:121:LEU:CB	1:C:127:GLU:HG3	2.47	0.41
1:B:27:VAL:HA	1:B:28:PRO:HD3	1.87	0.40
1:B:384:LYS:O	1:B:388:ILE:HD12	2.21	0.40
1:B:3:GLY:O	1:B:4:ASN:HB2	2.21	0.40
1:B:43:THR:HG23	1:B:47:ILE:HD12	2.03	0.40
1:C:63:HIS:CE1	1:C:122:ARG:NH1	2.89	0.40
1:C:98:CYS:SG	1:C:124:HIS:HD2	2.44	0.40
1:C:196:PHE:O	1:C:200:LEU:HG	2.21	0.40
1:C:222:LEU:CD2	1:C:226:LEU:HD11	2.51	0.40
1:A:127:GLU:OE2	1:A:173:SER:HB2	2.20	0.40

*Continued on next page...*

Continued from previous page...

Atom-1	Atom-2	Interatomic distance (Å)	Clash overlap (Å)
1:C:143:LYS:HE3	1:C:143:LYS:H	1.85	0.40
1:A:112:GLU:HA	1:A:112:GLU:OE2	2.21	0.40
1:A:335:TRP:CE3	1:A:358:VAL:HG21	2.56	0.40
1:B:99:VAL:CG1	1:B:153:LEU:HD23	2.51	0.40
1:B:269:MSE:HE3	5:B:607:HOH:O	2.21	0.40
1:A:245:LYS:HD3	1:A:257:PHE:CE1	2.56	0.40
1:A:263:LYS:C	1:A:264:ILE:HD12	2.41	0.40
1:B:143:LYS:N	1:B:143:LYS:HD3	2.37	0.40
1:B:17:LYS:O	1:B:55:ALA:HA	2.21	0.40
1:C:105:ASP:O	1:C:106:LYS:C	2.59	0.40
1:C:112:GLU:C	1:C:114:SER:H	2.25	0.40
1:C:62:SER:C	1:C:121:LEU:HD12	2.42	0.40
1:B:212:GLY:O	1:B:219:LYS:HE2	2.22	0.40
1:B:232:ARG:HH22	1:B:329:THR:CG2	2.34	0.40
1:B:246:VAL:HG11	1:B:265:VAL:CG2	2.51	0.40
1:B:362:THR:HG21	1:B:387:GLU:O	2.21	0.40
1:B:372:GLY:O	1:B:373:GLY:O	2.40	0.40
1:B:214:ALA:HB3	3:B:502:AMP:H5'2	2.03	0.40
1:C:232:ARG:HA	1:C:277:VAL:HG13	2.03	0.40

All (2) symmetry-related close contacts are listed below. The label for Atom-2 includes the symmetry operator and encoded unit-cell translations to be applied.

Atom-1	Atom-2	Interatomic distance (Å)	Clash overlap (Å)
1:B:386:ASN:ND2	1:C:386:ASN:ND2[7_545]	1.43	0.77
1:B:345:PRO:O	1:C:89:GLY:CA[7_545]	2.10	0.10

## 5.3 Torsion angles [i](#)

### 5.3.1 Protein backbone [i](#)

In the following table, the Percentiles column shows the percent Ramachandran outliers of the chain as a percentile score with respect to all X-ray entries followed by that with respect to entries of similar resolution.

The Analysed column shows the number of residues for which the backbone conformation was analysed, and the total number of residues.

Mol	Chain	Analysed	Favoured	Allowed	Outliers	Percentiles	
1	A	415/425 (98%)	373 (90%)	33 (8%)	9 (2%)	8	36

Continued on next page...

*Continued from previous page...*

Mol	Chain	Analysed	Favoured	Allowed	Outliers	Percentiles	
1	B	413/425 (97%)	342 (83%)	50 (12%)	21 (5%)	2	14
1	C	422/425 (99%)	357 (85%)	48 (11%)	17 (4%)	3	20
All	All	1250/1275 (98%)	1072 (86%)	131 (10%)	47 (4%)	4	21

All (47) Ramachandran outliers are listed below:

Mol	Chain	Res	Type
1	A	36	ASP
1	A	55	ALA
1	B	4	ASN
1	B	307	PRO
1	B	374	ASP
1	C	68	ASP
1	C	111	LYS
1	C	112	GLU
1	C	295	ALA
1	C	308	ASP
1	A	111	LYS
1	A	165	PHE
1	A	166	GLY
1	A	229	LYS
1	B	34	ILE
1	B	341	VAL
1	B	371	GLY
1	B	414	SER
1	C	4	ASN
1	C	13	ASP
1	C	73	GLU
1	C	113	ASN
1	C	201	GLU
1	C	395	GLY
1	A	395	GLY
1	B	73	GLU
1	B	373	GLY
1	B	203	PRO
1	C	254	THR
1	A	178	VAL
1	B	10	ASP
1	B	40	ILE
1	B	201	GLU
1	B	336	ASN

*Continued on next page...*

*Continued from previous page...*

Mol	Chain	Res	Type
1	B	405	LYS
1	C	12	LYS
1	C	122	ARG
1	C	179	LYS
1	C	247	LEU
1	B	8	ILE
1	B	13	ASP
1	B	55	ALA
1	B	138	LYS
1	B	345	PRO
1	A	371	GLY
1	B	394	GLY
1	C	107	ILE

### 5.3.2 Protein sidechains ⓘ

In the following table, the Percentiles column shows the percent sidechain outliers of the chain as a percentile score with respect to all X-ray entries followed by that with respect to entries of similar resolution.

The Analysed column shows the number of residues for which the sidechain conformation was analysed, and the total number of residues.

Mol	Chain	Analysed	Rotameric	Outliers	Percentiles	
1	A	351/351 (100%)	312 (89%)	39 (11%)	7	28
1	B	351/351 (100%)	297 (85%)	54 (15%)	3	15
1	C	360/351 (103%)	309 (86%)	51 (14%)	4	18
All	All	1062/1053 (101%)	918 (86%)	144 (14%)	4	19

All (144) residues with a non-rotameric sidechain are listed below:

Mol	Chain	Res	Type
1	A	6	LEU
1	A	11	LEU
1	A	12	LYS
1	A	14	ILE
1	A	20	LEU
1	A	22	ARG
1	A	35	LYS
1	A	45	PRO
1	A	82	GLU

*Continued on next page...*

*Continued from previous page...*

Mol	Chain	Res	Type
1	A	93	LEU
1	A	96	ASN
1	A	97	ASP
1	A	98	CYS
1	A	113	ASN
1	A	116	ILE
1	A	117	LEU
1	A	121	LEU
1	A	122	ARG
1	A	143	LYS
1	A	203	PRO
1	A	204	GLN
1	A	207	LEU
1	A	208	LEU
1	A	219	LYS
1	A	222	LEU
1	A	229	LYS
1	A	232	ARG
1	A	259	GLU
1	A	285	PHE
1	A	291	PHE
1	A	292	ASP
1	A	322	ASN
1	A	332	THR
1	A	345	PRO
1	A	351	SER
1	A	399	LEU
1	A	400	GLU
1	A	406	GLU
1	A	415	ASN
1	B	6	LEU
1	B	20	LEU
1	B	29	ILE
1	B	34	ILE
1	B	35	LYS
1	B	39	ARG
1	B	40	ILE
1	B	41	THR
1	B	43	THR
1	B	46	THR
1	B	48	ASN
1	B	50	LEU

*Continued on next page...*

*Continued from previous page...*

Mol	Chain	Res	Type
1	B	51	LYS
1	B	66	ARG
1	B	71	ARG
1	B	93	LEU
1	B	97	ASP
1	B	98	CYS
1	B	108	ASN
1	B	113	ASN
1	B	132	VAL
1	B	143	LYS
1	B	144	GLU
1	B	163	ASP
1	B	173	SER
1	B	181	ASN
1	B	191	LYS
1	B	201	GLU
1	B	207	LEU
1	B	208	LEU
1	B	229	LYS
1	B	256	LEU
1	B	264	ILE
1	B	270	GLU
1	B	281	LEU
1	B	285	PHE
1	B	291	PHE
1	B	292	ASP
1	B	294	ASN
1	B	307	PRO
1	B	323	TYR
1	B	325	ASP
1	B	332	THR
1	B	344	MSE
1	B	351	SER
1	B	363	LYS
1	B	375	THR
1	B	377	SER
1	B	383	ASN
1	B	386	ASN
1	B	399	LEU
1	B	401	LEU
1	B	406	GLU
1	B	414	SER

*Continued on next page...*

*Continued from previous page...*

Mol	Chain	Res	Type
1	C	-5	MSE
1	C	6	LEU
1	C	10	ASP
1	C	13	ASP
1	C	22	ARG
1	C	38	ASN
1	C	39	ARG
1	C	59	ILE
1	C	60	LEU
1	C	72	ASN
1	C	73	GLU
1	C	87	LEU
1	C	93	LEU
1	C	97	ASP
1	C	99	VAL
1	C	101	LYS
1	C	104	GLU
1	C	113	ASN
1	C	114	SER
1	C	143	LYS
1	C	144	GLU
1	C	153	LEU
1	C	158	ASP
1	C	163	ASP
1	C	167	THR
1	C	175	MSE
1	C	189	MSE
1	C	201	GLU
1	C	205	ARG
1	C	207	LEU
1	C	208	LEU
1	C	216	VAL
1	C	221	GLN
1	C	222	LEU
1	C	242	THR
1	C	244	LYS
1	C	245	LYS
1	C	247	LEU
1	C	248	ASN
1	C	254	THR
1	C	285	PHE
1	C	291	PHE

*Continued on next page...*



*Continued from previous page...*

Mol	Chain	Res	Type
1	C	318	LYS
1	C	325	ASP
1	C	341	VAL
1	C	351	SER
1	C	361	VAL
1	C	374	ASP
1	C	375	THR
1	C	405	LYS
1	C	414	SER

Some sidechains can be flipped to improve hydrogen bonding and reduce clashes. All (21) such sidechains are listed below:

Mol	Chain	Res	Type
1	A	16	ASN
1	A	38	ASN
1	A	49	HIS
1	A	108	ASN
1	A	113	ASN
1	A	124	HIS
1	A	204	GLN
1	A	221	GLN
1	A	248	ASN
1	A	356	ASN
1	B	16	ASN
1	B	63	HIS
1	B	108	ASN
1	B	113	ASN
1	B	225	ASN
1	B	248	ASN
1	C	72	ASN
1	C	108	ASN
1	C	113	ASN
1	C	124	HIS
1	C	296	ASN

### 5.3.3 RNA ⓘ

There are no RNA molecules in this entry.

## 5.4 Non-standard residues in protein, DNA, RNA chains ⓘ

There are no non-standard protein/DNA/RNA residues in this entry.

## 5.5 Carbohydrates ⓘ

There are no carbohydrates in this entry.

## 5.6 Ligand geometry ⓘ

7 ligands are modelled in this entry.

In the following table, the Counts columns list the number of bonds (or angles) for which Mogul statistics could be retrieved, the number of bonds (or angles) that are observed in the model and the number of bonds (or angles) that are defined in the chemical component dictionary. The Link column lists molecule types, if any, to which the group is linked. The Z score for a bond length (or angle) is the number of standard deviations the observed value is removed from the expected value. A bond length (or angle) with  $|Z| > 2$  is considered an outlier worth inspection. RMSZ is the root-mean-square of all Z scores of the bond lengths (or angles).

Mol	Type	Chain	Res	Link	Bond lengths			Bond angles		
					Counts	RMSZ	# $ Z  > 2$	Counts	RMSZ	# $ Z  > 2$
3	AMP	A	501	-	22,25,25	2.90	8 (36%)	24,38,38	1.79	5 (20%)
2	SO4	A	605	-	4,4,4	0.40	0	6,6,6	0.19	0
4	GOL	A	614	-	5,5,5	4.65	4 (80%)	5,5,5	5.44	3 (60%)
3	AMP	B	502	-	22,25,25	2.72	8 (36%)	24,38,38	1.84	6 (25%)
2	SO4	B	606	-	4,4,4	0.33	0	6,6,6	0.17	0
3	AMP	C	503	-	22,25,25	2.57	7 (31%)	24,38,38	1.93	6 (25%)
2	SO4	C	604	-	4,4,4	0.41	0	6,6,6	0.22	0

In the following table, the Chirals column lists the number of chiral outliers, the number of chiral centers analysed, the number of these observed in the model and the number defined in the chemical component dictionary. Similar counts are reported in the Torsion and Rings columns. '-' means no outliers of that kind were identified.

Mol	Type	Chain	Res	Link	Chirals	Torsions	Rings
3	AMP	A	501	-	-	0/6/26/26	0/3/3/3
2	SO4	A	605	-	-	0/0/0/0	0/0/0/0
4	GOL	A	614	-	-	0/4/4/4	0/0/0/0
3	AMP	B	502	-	-	0/6/26/26	0/3/3/3
2	SO4	B	606	-	-	0/0/0/0	0/0/0/0
3	AMP	C	503	-	-	0/6/26/26	0/3/3/3
2	SO4	C	604	-	-	0/0/0/0	0/0/0/0

All (27) bond length outliers are listed below:

Mol	Chain	Res	Type	Atoms	Z	Observed(Å)	Ideal(Å)
4	A	614	GOL	C3-C2	-8.26	1.21	1.52
4	A	614	GOL	O2-C2	-2.78	1.35	1.43
3	B	502	AMP	C5'-C4'	2.01	1.57	1.51
3	A	501	AMP	C5-C4	2.03	1.45	1.40
3	C	503	AMP	C5'-C4'	2.04	1.58	1.51
3	B	502	AMP	O4'-C4'	2.35	1.50	1.45
3	C	503	AMP	C2-N3	2.41	1.36	1.32
3	A	501	AMP	O4'-C4'	2.57	1.50	1.45
3	C	503	AMP	O4'-C1'	2.60	1.44	1.41
3	B	502	AMP	C2-N3	2.93	1.37	1.32
3	A	501	AMP	C2-N3	2.95	1.37	1.32
4	A	614	GOL	O3-C3	3.54	1.57	1.42
3	A	501	AMP	O4'-C1'	3.89	1.46	1.41
3	A	501	AMP	C2'-C3'	3.99	1.64	1.53
3	B	502	AMP	C2'-C3'	4.00	1.64	1.53
3	B	502	AMP	O4'-C1'	4.10	1.46	1.41
4	A	614	GOL	O1-C1	4.17	1.60	1.42
3	C	503	AMP	C2'-C3'	4.52	1.65	1.53
3	C	503	AMP	O3'-C3'	4.71	1.53	1.43
3	A	501	AMP	O3'-C3'	4.93	1.54	1.43
3	B	502	AMP	O3'-C3'	5.08	1.54	1.43
3	C	503	AMP	C2'-C1'	5.22	1.61	1.53
3	B	502	AMP	C2'-C1'	5.42	1.62	1.53
3	B	502	AMP	C3'-C4'	6.34	1.69	1.53
3	C	503	AMP	C3'-C4'	6.49	1.70	1.53
3	A	501	AMP	C3'-C4'	6.73	1.70	1.53
3	A	501	AMP	C2'-C1'	6.87	1.64	1.53

All (20) bond angle outliers are listed below:

Mol	Chain	Res	Type	Atoms	Z	Observed(°)	Ideal(°)
3	B	502	AMP	N3-C2-N1	-4.42	125.01	128.86
3	C	503	AMP	N3-C2-N1	-3.97	125.40	128.86
3	A	501	AMP	N3-C2-N1	-3.70	125.63	128.86
3	B	502	AMP	O3'-C3'-C4'	-2.05	105.09	111.09
3	C	503	AMP	O3'-C3'-C4'	-2.04	105.11	111.09
3	B	502	AMP	C4'-O4'-C1'	2.49	112.41	109.77
3	C	503	AMP	C2-N1-C6	2.59	123.30	118.77
3	A	501	AMP	C2-N1-C6	2.61	123.33	118.77
3	B	502	AMP	C2-N1-C6	2.63	123.38	118.77
3	A	501	AMP	C4'-O4'-C1'	2.72	112.66	109.77
3	B	502	AMP	N6-C6-N1	3.17	125.06	118.77

*Continued on next page...*

*Continued from previous page...*

Mol	Chain	Res	Type	Atoms	Z	Observed(°)	Ideal(°)
4	A	614	GOL	O1-C1-C2	3.30	126.68	110.07
3	C	503	AMP	N6-C6-N1	3.33	125.36	118.77
3	A	501	AMP	N6-C6-N1	3.35	125.40	118.77
3	C	503	AMP	C4'-O4'-C1'	4.22	114.26	109.77
3	A	501	AMP	C4-C5-N7	4.36	113.62	109.41
3	C	503	AMP	C4-C5-N7	4.37	113.63	109.41
3	B	502	AMP	C4-C5-N7	4.43	113.69	109.41
4	A	614	GOL	O2-C2-C3	6.42	139.16	108.84
4	A	614	GOL	O3-C3-C2	9.75	159.19	110.07

There are no chirality outliers.

There are no torsion outliers.

There are no ring outliers.

3 monomers are involved in 6 short contacts:

Mol	Chain	Res	Type	Clashes	Symm-Clashes
3	A	501	AMP	1	0
3	B	502	AMP	2	0
3	C	503	AMP	3	0

## 5.7 Other polymers [i](#)

There are no such residues in this entry.

## 5.8 Polymer linkage issues [i](#)

There are no chain breaks in this entry.

## 6 Fit of model and data

### 6.1 Protein, DNA and RNA chains

In the following table, the column labelled ‘#RSRZ > 2’ contains the number (and percentage) of RSRZ outliers, followed by percent RSRZ outliers for the chain as percentile scores relative to all X-ray entries and entries of similar resolution. The OWAB column contains the minimum, median, 95<sup>th</sup> percentile and maximum values of the occupancy-weighted average B-factor per residue. The column labelled ‘Q < 0.9’ lists the number of (and percentage) of residues with an average occupancy less than 0.9.

Mol	Chain	Analysed	<RSRZ>	#RSRZ>2	OWAB(Å <sup>2</sup> )	Q<0.9
1	A	409/425 (96%)	-0.09	2 (0%) 90 74	26, 45, 73, 94	0
1	B	407/425 (95%)	0.15	12 (2%) 52 24	31, 50, 73, 87	0
1	C	415/425 (97%)	0.72	31 (7%) 15 6	26, 46, 77, 91	0
All	All	1231/1275 (96%)	0.26	45 (3%) 42 18	26, 46, 75, 94	0

All (45) RSRZ outliers are listed below:

Mol	Chain	Res	Type	RSRZ
1	C	114	SER	4.1
1	C	89	GLY	3.9
1	C	294	ASN	3.5
1	B	201	GLU	3.4
1	B	10	ASP	3.3
1	B	16	ASN	3.2
1	C	67	PRO	3.1
1	C	98	CYS	3.1
1	C	142	ASN	3.1
1	C	134	ALA	3.1
1	B	294	ASN	3.0
1	B	202	ASN	3.0
1	B	181	ASN	2.9
1	C	73	GLU	2.9
1	C	-7	HIS	2.9
1	C	-6	SER	2.9
1	C	109	ALA	2.7
1	C	101	LYS	2.7
1	C	11	LEU	2.6
1	A	10	ASP	2.6
1	C	416	LYS	2.5
1	C	31	ASN	2.5
1	C	54	GLY	2.5

*Continued on next page...*

*Continued from previous page...*

Mol	Chain	Res	Type	RSRZ
1	C	393	THR	2.3
1	C	68	ASP	2.3
1	B	331	LYS	2.3
1	B	31	ASN	2.3
1	C	293	ASN	2.3
1	C	396	GLY	2.3
1	C	72	ASN	2.3
1	C	79	PRO	2.2
1	C	33	ILE	2.2
1	B	363	LYS	2.2
1	C	76	THR	2.2
1	B	101	LYS	2.2
1	C	120	ASN	2.2
1	A	138	LYS	2.1
1	C	106	LYS	2.1
1	C	24	ASP	2.1
1	B	308	ASP	2.1
1	C	308	ASP	2.1
1	B	15	LYS	2.0
1	C	82	GLU	2.0
1	C	324	LYS	2.0
1	C	141	ALA	2.0

## 6.2 Non-standard residues in protein, DNA, RNA chains [i](#)

There are no non-standard protein/DNA/RNA residues in this entry.

## 6.3 Carbohydrates [i](#)

There are no carbohydrates in this entry.

## 6.4 Ligands [i](#)

In the following table, the Atoms column lists the number of modelled atoms in the group and the number defined in the chemical component dictionary. LLDF column lists the quality of electron density of the group with respect to its neighbouring residues in protein, DNA or RNA chains. The B-factors column lists the minimum, median, 95<sup>th</sup> percentile and maximum values of B factors of atoms in the group. The column labelled 'Q < 0.9' lists the number of atoms with occupancy less than 0.9.

Mol	Type	Chain	Res	Atoms	RSCC	RSR	LLDF	B-factors( $\text{\AA}^2$ )	Q<0.9
3	AMP	A	501	23/23	0.71	0.44	4.47	103,109,113,113	0
2	SO4	C	604	5/5	0.49	0.65	3.59	108,108,109,110	0
3	AMP	B	502	23/23	0.80	0.36	2.11	110,125,126,126	0
3	AMP	C	503	23/23	0.68	0.43	2.07	104,115,117,117	0
2	SO4	A	605	5/5	0.83	0.27	1.07	98,99,99,99	0
2	SO4	B	606	5/5	0.85	0.25	-0.07	93,94,95,95	0
4	GOL	A	614	6/6	0.82	0.27	-	61,64,65,67	0

## 6.5 Other polymers [i](#)

There are no such residues in this entry.