



# wwPDB X-ray Structure Validation Summary Report ⓘ

Nov 8, 2017 – 03:46 PM EST

PDB ID : 4LUC  
Title : Crystal Structure of small molecule disulfide 6 bound to K-Ras G12C  
Authors : Ostrem, J.M.; Peters, U.; Sos, M.L.; Wells, J.A.; Shokat, K.M.  
Deposited on : unknown  
Resolution : 1.29 Å(reported)

This is a wwPDB X-ray Structure Validation Summary Report for a publicly released PDB entry.

We welcome your comments at [validation@mail.wwpdb.org](mailto:validation@mail.wwpdb.org)

A user guide is available at

<http://wwpdb.org/validation/2016/XrayValidationReportHelp>

with specific help available everywhere you see the ⓘ symbol.

---

The following versions of software and data (see [references ⓘ](#)) were used in the production of this report:

MolProbity : 4.02b-467  
Mogul : 1.7.2 (RC1), CSD as538be (2017)  
Xtriage (Phenix) : 1.9-1692  
EDS : rb-20030345  
Percentile statistics : 20161228.v01 (using entries in the PDB archive December 28th 2016)  
Refmac : 5.8.0135  
CCP4 : 6.5.0  
Ideal geometry (proteins) : Engh & Huber (2001)  
Ideal geometry (DNA, RNA) : Parkinson et al. (1996)  
Validation Pipeline (wwPDB-VP) : rb-20030345

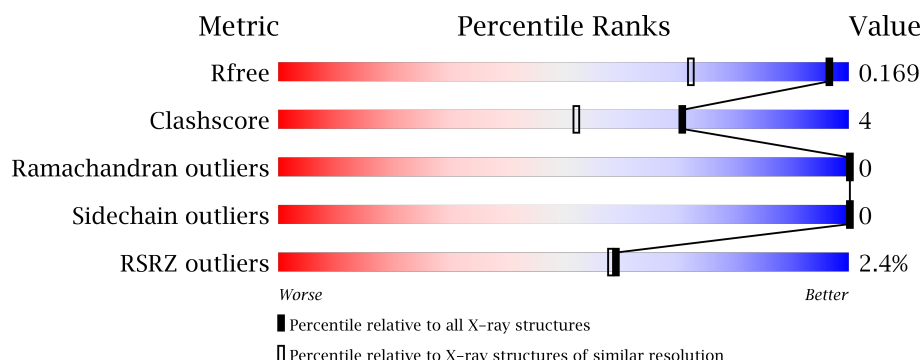
# 1 Overall quality at a glance

The following experimental techniques were used to determine the structure:

## *X-RAY DIFFRACTION*

The reported resolution of this entry is 1.29 Å.

Percentile scores (ranging between 0-100) for global validation metrics of the entry are shown in the following graphic. The table shows the number of entries on which the scores are based.



Metric	Whole archive (#Entries)	Similar resolution (#Entries, resolution range(Å))
$R_{free}$	100719	1131 (1.32-1.28)
Clashscore	112137	1185 (1.32-1.28)
Ramachandran outliers	110173	1138 (1.32-1.28)
Sidechain outliers	110143	1138 (1.32-1.28)
RSRZ outliers	101464	1133 (1.32-1.28)

The table below summarises the geometric issues observed across the polymeric chains and their fit to the electron density. The red, orange, yellow and green segments on the lower bar indicate the fraction of residues that contain outliers for  $\geq 3$ , 2, 1 and 0 types of geometric quality criteria. A grey segment represents the fraction of residues that are not modelled. The numeric value for each fraction is indicated below the corresponding segment, with a dot representing fractions  $\leq 5\%$ . The upper red bar (where present) indicates the fraction of residues that have poor fit to the electron density. The numeric value is given above the bar.

Mol	Chain	Length	Quality of chain
1	A	170	<div> <div style="width: 100%; height: 10px; background-color: red;"></div> <div style="width: 100%; height: 10px; background-color: green; position: relative;"> <span style="position: absolute; left: 0; top: -5px;">.%</span> <span style="position: absolute; right: 0; top: -5px;">10% •</span> <span style="position: absolute; left: 89%; top: -5px;">89%</span> </div> </div>
1	B	170	<div> <div style="width: 4%; height: 10px; background-color: red;"></div> <div style="width: 100%; height: 10px; background-color: green; position: relative;"> <span style="position: absolute; left: 0; top: -5px;">4%</span> <span style="position: absolute; right: 0; top: -5px;">6% •</span> <span style="position: absolute; left: 92%; top: -5px;">92%</span> </div> </div>

## 2 Entry composition

There are 5 unique types of molecules in this entry. The entry contains 5925 atoms, of which 2773 are hydrogens and 0 are deuteriums.

In the tables below, the ZeroOcc column contains the number of atoms modelled with zero occupancy, the AltConf column contains the number of residues with at least one atom in alternate conformation and the Trace column contains the number of residues modelled with at most 2 atoms.

- Molecule 1 is a protein called GTPase KRas.

Mol	Chain	Residues	Atoms						ZeroOcc	AltConf	Trace
1	A	168	Total	C	H	N	O	S	0	5	0
			2715	855	1357	231	267	5			
1	B	168	Total	C	H	N	O	S	0	4	0
			2705	852	1350	231	266	6			

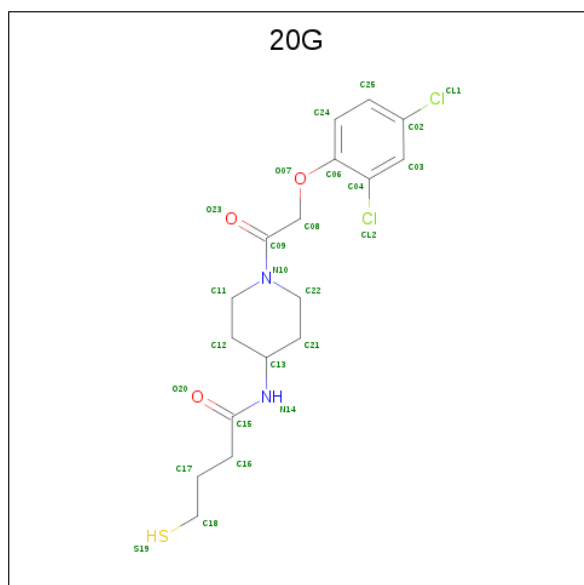
There are 22 discrepancies between the modelled and reference sequences:

Chain	Residue	Modelled	Actual	Comment	Reference
A	0	GLY	-	EXPRESSION TAG	UNP P01116
A	12	CYS	GLY	VARIANT	UNP P01116
A	51	SER	CYS	ENGINEERED MUTATION	UNP P01116
A	80	LEU	CYS	ENGINEERED MUTATION	UNP P01116
A	118	SER	CYS	ENGINEERED MUTATION	UNP P01116
A	151	GLY	ARG	SEE REMARK 999	UNP P01116
A	153	ASP	GLU	SEE REMARK 999	UNP P01116
A	165	LYS	GLN	SEE REMARK 999	UNP P01116
A	166	HIS	TYR	SEE REMARK 999	UNP P01116
A	167	LYS	ARG	SEE REMARK 999	UNP P01116
A	168	GLU	LEU	SEE REMARK 999	UNP P01116
B	0	GLY	-	EXPRESSION TAG	UNP P01116
B	12	CYS	GLY	VARIANT	UNP P01116
B	51	SER	CYS	ENGINEERED MUTATION	UNP P01116
B	80	LEU	CYS	ENGINEERED MUTATION	UNP P01116
B	118	SER	CYS	ENGINEERED MUTATION	UNP P01116
B	151	GLY	ARG	SEE REMARK 999	UNP P01116
B	153	ASP	GLU	SEE REMARK 999	UNP P01116
B	165	LYS	GLN	SEE REMARK 999	UNP P01116
B	166	HIS	TYR	SEE REMARK 999	UNP P01116
B	167	LYS	ARG	SEE REMARK 999	UNP P01116
B	168	GLU	LEU	SEE REMARK 999	UNP P01116

- Molecule 2 is CALCIUM ION (three-letter code: CA) (formula: Ca).

Mol	Chain	Residues	Atoms	ZeroOcc	AltConf
2	B	2	Total Ca 2 2	0	0
2	A	2	Total Ca 2 2	0	0

- Molecule 3 is N-{1-[(2,4-dichlorophenoxy)acetyl]piperidin-4-yl}-4-sulfanylbutanamide (three-letter code: 20G) (formula: C<sub>17</sub>H<sub>22</sub>Cl<sub>2</sub>N<sub>2</sub>O<sub>3</sub>S).



Mol	Chain	Residues	Atoms							ZeroOcc	AltConf
3	A	1	Total	C	Cl	H	N	O	S	0	0
			46	17	2	21	2	3	1		
3	B	1	Total	C	Cl	H	N	O	S	0	0
			46	17	2	21	2	3	1		

- Molecule 4 is GUANOSINE-5'-DIPHOSPHATE (three-letter code: GDP) (formula: C<sub>10</sub>H<sub>15</sub>N<sub>5</sub>O<sub>11</sub>P<sub>2</sub>).



Mol	Chain	Residues	Atoms						ZeroOcc	AltConf
4	A	1	Total 40	C 10	H 12	N 5	O 11	P 2	0	0
4	B	1	Total 40	C 10	H 12	N 5	O 11	P 2	0	0

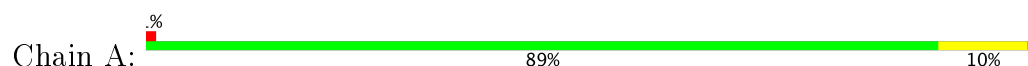
- Molecule 5 is water.

Mol	Chain	Residues	Atoms		ZeroOcc	AltConf
5	A	158	Total	O	0	0
			158	158		
5	B	171	Total	O	0	0
			171	171		

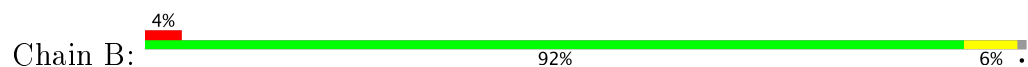
### 3 Residue-property plots [i](#)

These plots are drawn for all protein, RNA and DNA chains in the entry. The first graphic for a chain summarises the proportions of the various outlier classes displayed in the second graphic. The second graphic shows the sequence view annotated by issues in geometry and electron density. Residues are color-coded according to the number of geometric quality criteria for which they contain at least one outlier: green = 0, yellow = 1, orange = 2 and red = 3 or more. A red dot above a residue indicates a poor fit to the electron density ( $RSRZ > 2$ ). Stretches of 2 or more consecutive residues without any outlier are shown as a green connector. Residues present in the sample, but not in the model, are shown in grey.

- Molecule 1: GTPase KRas



- Molecule 1: GTPase KRas



## 4 Data and refinement statistics

Property	Value	Source
Space group	P 1	Depositor
Cell constants a, b, c, $\alpha$ , $\beta$ , $\gamma$	32.82Å 39.08Å 62.46Å 77.86° 81.54° 77.55°	Depositor
Resolution (Å)	19.37 – 1.29 19.37 – 1.29	Depositor EDS
% Data completeness (in resolution range)	95.0 (19.37-1.29) 87.2 (19.37-1.29)	Depositor EDS
$R_{merge}$	0.07	Depositor
$R_{sym}$	0.07	Depositor
$\langle I/\sigma(I) \rangle$ <sup>1</sup>	4.11 (at 1.29Å)	Xtriage
Refinement program	PHENIX dev_1402	Depositor
R, $R_{free}$	0.152 , 0.169 0.151 , 0.169	Depositor DCC
$R_{free}$ test set	1932 reflections (2.83%)	DCC
Wilson B-factor (Å <sup>2</sup> )	12.0	Xtriage
Anisotropy	0.360	Xtriage
Bulk solvent $k_{sol}$ (e/Å <sup>3</sup> ), $B_{sol}$ (Å <sup>2</sup> )	0.47 , 50.0	EDS
L-test for twinning <sup>2</sup>	$\langle  L  \rangle = 0.50$ , $\langle L^2 \rangle = 0.33$	Xtriage
Estimated twinning fraction	No twinning to report.	Xtriage
$F_o, F_c$ correlation	0.97	EDS
Total number of atoms	5925	wwPDB-VP
Average B, all atoms (Å <sup>2</sup> )	21.0	wwPDB-VP

Xtriage's analysis on translational NCS is as follows: *The largest off-origin peak in the Patterson function is 8.29% of the height of the origin peak. No significant pseudotranslation is detected.*

<sup>1</sup>Intensities estimated from amplitudes.

<sup>2</sup>Theoretical values of  $\langle |L| \rangle$ ,  $\langle L^2 \rangle$  for acentric reflections are 0.5, 0.333 respectively for untwinned datasets, and 0.375, 0.2 for perfectly twinned datasets.

## 5 Model quality ⓘ

### 5.1 Standard geometry ⓘ

Bond lengths and bond angles in the following residue types are not validated in this section: GDP, CA, 20G

The Z score for a bond length (or angle) is the number of standard deviations the observed value is removed from the expected value. A bond length (or angle) with  $|Z| > 5$  is considered an outlier worth inspection. RMSZ is the root-mean-square of all Z scores of the bond lengths (or angles).

Mol	Chain	Bond lengths		Bond angles	
		RMSZ	$\# Z  > 5$	RMSZ	$\# Z  > 5$
1	A	1.03	0/1394	1.01	5/1882 (0.3%)
1	B	0.90	1/1388 (0.1%)	0.97	5/1873 (0.3%)
All	All	0.97	1/2782 (0.0%)	0.99	10/3755 (0.3%)

All (1) bond length outliers are listed below:

Mol	Chain	Res	Type	Atoms	Z	Observed(Å)	Ideal(Å)
1	B	157	TYR	CE1-CZ	-5.36	1.31	1.38

The worst 5 of 10 bond angle outliers are listed below:

Mol	Chain	Res	Type	Atoms	Z	Observed(°)	Ideal(°)
1	B	102	ARG	NE-CZ-NH2	-11.24	114.68	120.30
1	B	33	ASP	CB-CG-OD1	7.26	124.84	118.30
1	A	102	ARG	NE-CZ-NH2	-7.03	116.78	120.30
1	A	79	LEU	CB-CG-CD2	5.83	120.91	111.00
1	B	111[A]	MET	CG-SD-CE	-5.61	91.22	100.20

There are no chirality outliers.

There are no planarity outliers.

### 5.2 Too-close contacts ⓘ

In the following table, the Non-H and H(model) columns list the number of non-hydrogen atoms and hydrogen atoms in the chain respectively. The H(added) column lists the number of hydrogen atoms added and optimized by MolProbity. The Clashes column lists the number of clashes within the asymmetric unit, whereas Symm-Clashes lists symmetry related clashes.



Mol	Chain	Non-H	H(model)	H(added)	Clashes	Symm-Clashes
1	A	1358	1357	1355	18	0
1	B	1355	1350	1348	5	0
2	A	2	0	0	0	0
2	B	2	0	0	0	0
3	A	25	21	21	0	0
3	B	25	21	21	0	0
4	A	28	12	12	0	0
4	B	28	12	12	0	0
5	A	158	0	0	3	2
5	B	171	0	0	3	3
All	All	3152	2773	2769	23	3

The all-atom clashscore is defined as the number of clashes found per 1000 atoms (including hydrogen atoms). The all-atom clashscore for this structure is 4.

The worst 5 of 23 close contacts within the same asymmetric unit are listed below, sorted by their clash magnitude.

Atom-1	Atom-2	Interatomic distance (Å)	Clash overlap (Å)
1:B:88:LYS:NZ	5:B:462:HOH:O	1.87	0.93
1:A:1:MET:SD	1:A:43[B]:GLN:NE2	2.49	0.85
1:A:107:GLU:OE1	5:A:456:HOH:O	1.98	0.82
1:A:73:ARG:NH2	5:A:386:HOH:O	2.20	0.74
1:B:94:HIS:CD2	5:B:429:HOH:O	2.44	0.71

All (3) symmetry-related close contacts are listed below. The label for Atom-2 includes the symmetry operator and encoded unit-cell translations to be applied.

Atom-1	Atom-2	Interatomic distance (Å)	Clash overlap (Å)
5:A:445:HOH:O	5:B:440:HOH:O[1_455]	1.78	0.42
5:B:367:HOH:O	5:B:377:HOH:O[1_655]	2.06	0.14
5:A:401:HOH:O	5:B:462:HOH:O[1_455]	2.17	0.03

## 5.3 Torsion angles [i](#)

### 5.3.1 Protein backbone [i](#)

In the following table, the Percentiles column shows the percent Ramachandran outliers of the chain as a percentile score with respect to all X-ray entries followed by that with respect to entries of similar resolution.

The Analysed column shows the number of residues for which the backbone conformation was

analysed, and the total number of residues.

Mol	Chain	Analysed	Favoured	Allowed	Outliers	Percentiles	
1	A	171/170 (101%)	168 (98%)	3 (2%)	0	100	100
1	B	170/170 (100%)	167 (98%)	3 (2%)	0	100	100
All	All	341/340 (100%)	335 (98%)	6 (2%)	0	100	100

There are no Ramachandran outliers to report.

### 5.3.2 Protein sidechains ⓘ

In the following table, the Percentiles column shows the percent sidechain outliers of the chain as a percentile score with respect to all X-ray entries followed by that with respect to entries of similar resolution.

The Analysed column shows the number of residues for which the sidechain conformation was analysed, and the total number of residues.

Mol	Chain	Analysed	Rotameric	Outliers	Percentiles	
1	A	152/150 (101%)	152 (100%)	0	100	100
1	B	151/150 (101%)	151 (100%)	0	100	100
All	All	303/300 (101%)	303 (100%)	0	100	100

There are no protein residues with a non-rotameric sidechain to report.

Some sidechains can be flipped to improve hydrogen bonding and reduce clashes. All (1) such sidechains are listed below:

Mol	Chain	Res	Type
1	B	94	HIS

### 5.3.3 RNA ⓘ

There are no RNA molecules in this entry.

## 5.4 Non-standard residues in protein, DNA, RNA chains ⓘ

There are no non-standard protein/DNA/RNA residues in this entry.

## 5.5 Carbohydrates [i](#)

There are no carbohydrates in this entry.

## 5.6 Ligand geometry [i](#)

Of 8 ligands modelled in this entry, 4 are monoatomic - leaving 4 for Mogul analysis.

In the following table, the Counts columns list the number of bonds (or angles) for which Mogul statistics could be retrieved, the number of bonds (or angles) that are observed in the model and the number of bonds (or angles) that are defined in the Chemical Component Dictionary. The Link column lists molecule types, if any, to which the group is linked. The Z score for a bond length (or angle) is the number of standard deviations the observed value is removed from the expected value. A bond length (or angle) with  $|Z| > 2$  is considered an outlier worth inspection. RMSZ is the root-mean-square of all Z scores of the bond lengths (or angles).

Mol	Type	Chain	Res	Link	Bond lengths			Bond angles		
					Counts	RMSZ	# $ Z  > 2$	Counts	RMSZ	# $ Z  > 2$
3	20G	A	203	1	26,26,26	2.17	8 (30%)	34,34,34	1.65	9 (26%)
4	GDP	A	204	2	25,30,30	1.20	4 (16%)	23,47,47	1.18	2 (8%)
3	20G	B	203	1	26,26,26	1.94	7 (26%)	34,34,34	1.44	6 (17%)
4	GDP	B	204	2	25,30,30	1.68	5 (20%)	23,47,47	1.53	6 (26%)

In the following table, the Chirals column lists the number of chiral outliers, the number of chiral centers analysed, the number of these observed in the model and the number defined in the Chemical Component Dictionary. Similar counts are reported in the Torsion and Rings columns. '-' means no outliers of that kind were identified.

Mol	Type	Chain	Res	Link	Chirals	Torsions	Rings
3	20G	A	203	1	-	0/17/27/27	0/2/2/2
4	GDP	A	204	2	-	0/12/32/32	0/3/3/3
3	20G	B	203	1	-	0/17/27/27	0/2/2/2
4	GDP	B	204	2	-	0/12/32/32	0/3/3/3

The worst 5 of 24 bond length outliers are listed below:

Mol	Chain	Res	Type	Atoms	Z	Observed(Å)	Ideal(Å)
4	B	204	GDP	C2'-C1'	-5.05	1.45	1.53
4	B	204	GDP	C6-N1	-3.39	1.32	1.36
3	B	203	20G	C02-CL1	-3.16	1.67	1.74
3	B	203	20G	C04-CL2	-3.03	1.66	1.73
3	A	203	20G	C03-C04	-2.57	1.34	1.38

The worst 5 of 23 bond angle outliers are listed below:

Mol	Chain	Res	Type	Atoms	Z	Observed(°)	Ideal(°)
4	B	204	GDP	C1'-N9-C4	-4.16	119.44	126.64
3	B	203	20G	C12-C13-N14	-3.11	104.93	110.53
4	A	204	GDP	C4'-O4'-C1'	-2.56	107.04	109.77
4	B	204	GDP	O3'-C3'-C2'	-2.48	103.89	111.83
3	A	203	20G	C25-C24-C06	-2.30	115.68	120.06

There are no chirality outliers.

There are no torsion outliers.

There are no ring outliers.

No monomer is involved in short contacts.

## 5.7 Other polymers [i](#)

There are no such residues in this entry.

## 5.8 Polymer linkage issues [i](#)

There are no chain breaks in this entry.

## 6 Fit of model and data [i](#)

### 6.1 Protein, DNA and RNA chains [i](#)

In the following table, the column labelled ‘#RSRZ> 2’ contains the number (and percentage) of RSRZ outliers, followed by percent RSRZ outliers for the chain as percentile scores relative to all X-ray entries and entries of similar resolution. The OWAB column contains the minimum, median, 95<sup>th</sup> percentile and maximum values of the occupancy-weighted average B-factor per residue. The column labelled ‘Q< 0.9’ lists the number of (and percentage) of residues with an average occupancy less than 0.9.

Mol	Chain	Analysed	<RSRZ>	#RSRZ>2	OWAB(Å <sup>2</sup> )	Q<0.9
1	A	168/170 (98%)	0.02	2 (1%) 79 79	9, 16, 30, 46	0
1	B	168/170 (98%)	0.13	6 (3%) 43 41	10, 17, 36, 45	0
All	All	336/340 (98%)	0.08	8 (2%) 59 58	9, 16, 34, 46	0

The worst 5 of 8 RSRZ outliers are listed below:

Mol	Chain	Res	Type	RSRZ
1	A	1	MET	5.0
1	B	1	MET	4.7
1	B	121	PRO	3.8
1	B	167	LYS	3.5
1	B	168	GLU	3.0

### 6.2 Non-standard residues in protein, DNA, RNA chains [i](#)

There are no non-standard protein/DNA/RNA residues in this entry.

### 6.3 Carbohydrates [i](#)

There are no carbohydrates in this entry.

### 6.4 Ligands [i](#)

In the following table, the Atoms column lists the number of modelled atoms in the group and the number defined in the chemical component dictionary. LLDF column lists the quality of electron density of the group with respect to its neighbouring residues in protein, DNA or RNA chains. The B-factors column lists the minimum, median, 95<sup>th</sup> percentile and maximum values of B factors of atoms in the group. The column labelled ‘Q< 0.9’ lists the number of atoms with occupancy less than 0.9.

Mol	Type	Chain	Res	Atoms	RSCC	RSR	LLDF	B-factors( $\text{\AA}^2$ )	Q<0.9
3	20G	A	203	25/25	0.94	0.09	0.84	14,18,29,31	0
3	20G	B	203	25/25	0.94	0.09	0.22	14,19,30,32	0
4	GDP	B	204	28/28	0.97	0.07	-0.41	13,16,24,29	0
4	GDP	A	204	28/28	0.99	0.07	-0.72	10,14,19,23	0
2	CA	A	202	1/1	1.00	0.03	-1.69	13,13,13,13	0
2	CA	B	202	1/1	1.00	0.04	-2.79	14,14,14,14	0
2	CA	A	201	1/1	1.00	0.03	-3.65	13,13,13,13	0
2	CA	B	201	1/1	1.00	0.03	-7.94	14,14,14,14	0

## 6.5 Other polymers [i](#)

There are no such residues in this entry.