



wwPDB X-ray Structure Validation Summary Report ⓘ

Nov 8, 2017 – 05:17 PM EST

PDB ID : 4LV7
Title : Crystal structure of inositol 1,3,4,5,6-pentakisphosphate 2-kinase E82C/S142C
Authors : Gosein, V.; Miller, G.J.
Deposited on : unknown
Resolution : 2.60 Å(reported)

This is a wwPDB X-ray Structure Validation Summary Report for a publicly released PDB entry.

We welcome your comments at validation@mail.wwpdb.org

A user guide is available at

<http://wwpdb.org/validation/2016/XrayValidationReportHelp>

with specific help available everywhere you see the ⓘ symbol.

The following versions of software and data (see [references ⓘ](#)) were used in the production of this report:

MolProbity : 4.02b-467
Mogul : 1.7.2 (RC1), CSD as538be (2017)
Xtriage (Phenix) : 1.9-1692
EDS : rb-20030345
Percentile statistics : 20161228.v01 (using entries in the PDB archive December 28th 2016)
Refmac : 5.8.0135
CCP4 : 6.5.0
Ideal geometry (proteins) : Engh & Huber (2001)
Ideal geometry (DNA, RNA) : Parkinson et al. (1996)
Validation Pipeline (wwPDB-VP) : rb-20030345

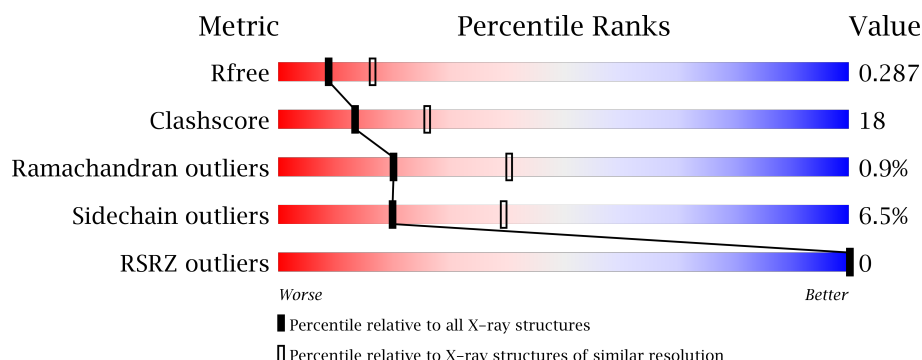
1 Overall quality at a glance

The following experimental techniques were used to determine the structure:

X-RAY DIFFRACTION



The reported resolution of this entry is 2.60 Å.

Percentile scores (ranging between 0-100) for global validation metrics of the entry are shown in the following graphic. The table shows the number of entries on which the scores are based.



Metric	Whole archive (#Entries)	Similar resolution (#Entries, resolution range(Å))
R_{free}	100719	2542 (2.60-2.60)
Clashscore	112137	2895 (2.60-2.60)
Ramachandran outliers	110173	2848 (2.60-2.60)
Sidechain outliers	110143	2848 (2.60-2.60)
RSRZ outliers	101464	2550 (2.60-2.60)

The table below summarises the geometric issues observed across the polymeric chains and their fit to the electron density. The red, orange, yellow and green segments on the lower bar indicate the fraction of residues that contain outliers for ≥ 3 , 2, 1 and 0 types of geometric quality criteria. A grey segment represents the fraction of residues that are not modelled. The numeric value for each fraction is indicated below the corresponding segment, with a dot representing fractions $\leq 5\%$. The upper red bar (where present) indicates the fraction of residues that have poor fit to the electron density. The numeric value is given above the bar.

Mol	Chain	Length	Quality of chain
1	A	493	
1	B	493	

2 Entry composition

There are 5 unique types of molecules in this entry. The entry contains 6380 atoms, of which 0 are hydrogens and 0 are deuteriums.

In the tables below, the ZeroOcc column contains the number of atoms modelled with zero occupancy, the AltConf column contains the number of residues with at least one atom in alternate conformation and the Trace column contains the number of residues modelled with at most 2 atoms.

- Molecule 1 is a protein called Inositol-pentakisphosphate 2-kinase.

Mol	Chain	Residues	Atoms					ZeroOcc	AltConf	Trace
1	A	390	Total	C	N	O	S	0	0	0
			3114	1992	526	582	14			
1	B	394	Total	C	N	O	S	0	0	0
			3136	2003	528	591	14			

There are 106 discrepancies between the modelled and reference sequences:

Chain	Residue	Modelled	Actual	Comment	Reference
A	-33	MET	-	INITIATING METHIONINE	UNP Q93YN9
A	-32	GLY	-	EXPRESSION TAG	UNP Q93YN9
A	-31	SER	-	EXPRESSION TAG	UNP Q93YN9
A	-30	SER	-	EXPRESSION TAG	UNP Q93YN9
A	-29	HIS	-	EXPRESSION TAG	UNP Q93YN9
A	-28	HIS	-	EXPRESSION TAG	UNP Q93YN9
A	-27	HIS	-	EXPRESSION TAG	UNP Q93YN9
A	-26	HIS	-	EXPRESSION TAG	UNP Q93YN9
A	-25	HIS	-	EXPRESSION TAG	UNP Q93YN9
A	-24	HIS	-	EXPRESSION TAG	UNP Q93YN9
A	-23	SER	-	EXPRESSION TAG	UNP Q93YN9
A	-22	SER	-	EXPRESSION TAG	UNP Q93YN9
A	-21	GLY	-	EXPRESSION TAG	UNP Q93YN9
A	-20	LEU	-	EXPRESSION TAG	UNP Q93YN9
A	-19	VAL	-	EXPRESSION TAG	UNP Q93YN9
A	-18	PRO	-	EXPRESSION TAG	UNP Q93YN9
A	-17	ARG	-	EXPRESSION TAG	UNP Q93YN9
A	-16	GLY	-	EXPRESSION TAG	UNP Q93YN9
A	-15	SER	-	EXPRESSION TAG	UNP Q93YN9
A	-14	HIS	-	EXPRESSION TAG	UNP Q93YN9
A	-13	MET	-	EXPRESSION TAG	UNP Q93YN9
A	-12	ALA	-	EXPRESSION TAG	UNP Q93YN9
A	-11	SER	-	EXPRESSION TAG	UNP Q93YN9
A	-10	MET	-	EXPRESSION TAG	UNP Q93YN9
A	-9	THR	-	EXPRESSION TAG	UNP Q93YN9

Continued on next page...

Continued from previous page...

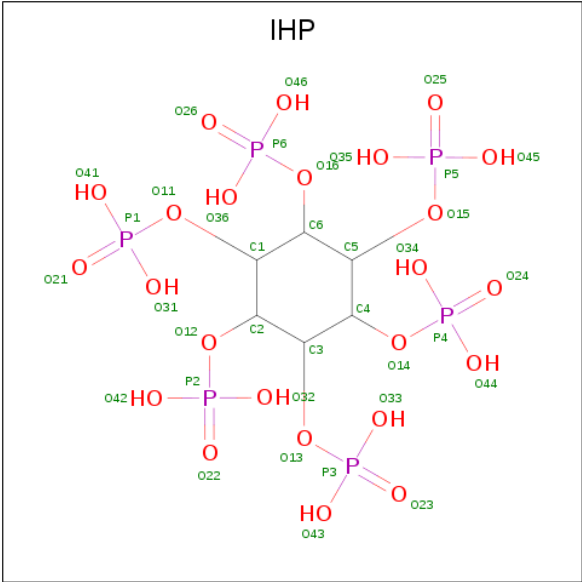
Chain	Residue	Modelled	Actual	Comment	Reference
A	-8	GLY	-	EXPRESSION TAG	UNP Q93YN9
A	-7	GLY	-	EXPRESSION TAG	UNP Q93YN9
A	-6	GLN	-	EXPRESSION TAG	UNP Q93YN9
A	-5	GLN	-	EXPRESSION TAG	UNP Q93YN9
A	-4	MET	-	EXPRESSION TAG	UNP Q93YN9
A	-3	GLY	-	EXPRESSION TAG	UNP Q93YN9
A	-2	ARG	-	EXPRESSION TAG	UNP Q93YN9
A	-1	ILE	-	EXPRESSION TAG	UNP Q93YN9
A	0	LEU	-	EXPRESSION TAG	UNP Q93YN9
A	54	SER	ALA	CONFLICT	UNP Q93YN9
A	82	CYS	GLU	ENGINEERED MUTATION	UNP Q93YN9
A	90	GLN	LYS	CONFLICT	UNP Q93YN9
A	142	CYS	SER	ENGINEERED MUTATION	UNP Q93YN9
A	157	THR	SER	CONFLICT	UNP Q93YN9
A	185	ILE	MET	CONFLICT	UNP Q93YN9
A	204	ILE	ASN	CONFLICT	UNP Q93YN9
A	224	ARG	SER	CONFLICT	UNP Q93YN9
A	321	CYS	SER	CONFLICT	UNP Q93YN9
A	325	ILE	LEU	CONFLICT	UNP Q93YN9
A	337	ARG	LYS	CONFLICT	UNP Q93YN9
A	452	ASP	-	EXPRESSION TAG	UNP Q93YN9
A	453	TYR	-	EXPRESSION TAG	UNP Q93YN9
A	454	LYS	-	EXPRESSION TAG	UNP Q93YN9
A	455	ASP	-	EXPRESSION TAG	UNP Q93YN9
A	456	ASP	-	EXPRESSION TAG	UNP Q93YN9
A	457	ASP	-	EXPRESSION TAG	UNP Q93YN9
A	458	ASP	-	EXPRESSION TAG	UNP Q93YN9
A	459	LYS	-	EXPRESSION TAG	UNP Q93YN9
B	-33	MET	-	INITIATING METHIONINE	UNP Q93YN9
B	-32	GLY	-	EXPRESSION TAG	UNP Q93YN9
B	-31	SER	-	EXPRESSION TAG	UNP Q93YN9
B	-30	SER	-	EXPRESSION TAG	UNP Q93YN9
B	-29	HIS	-	EXPRESSION TAG	UNP Q93YN9
B	-28	HIS	-	EXPRESSION TAG	UNP Q93YN9
B	-27	HIS	-	EXPRESSION TAG	UNP Q93YN9
B	-26	HIS	-	EXPRESSION TAG	UNP Q93YN9
B	-25	HIS	-	EXPRESSION TAG	UNP Q93YN9
B	-24	HIS	-	EXPRESSION TAG	UNP Q93YN9
B	-23	SER	-	EXPRESSION TAG	UNP Q93YN9
B	-22	SER	-	EXPRESSION TAG	UNP Q93YN9
B	-21	GLY	-	EXPRESSION TAG	UNP Q93YN9
B	-20	LEU	-	EXPRESSION TAG	UNP Q93YN9

Continued on next page...

Continued from previous page...

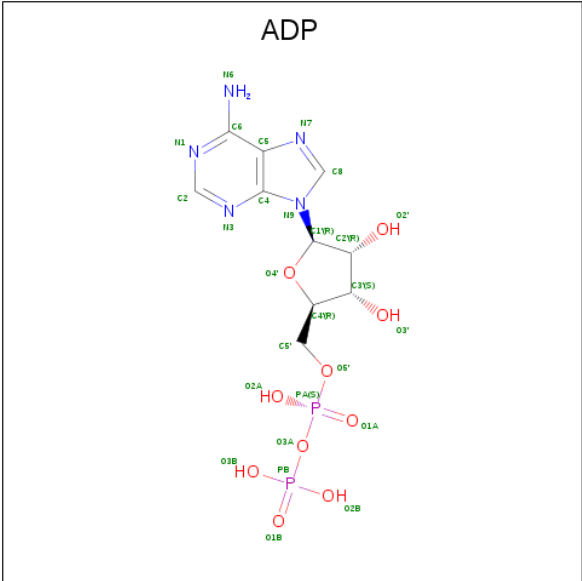
Chain	Residue	Modelled	Actual	Comment	Reference
B	-19	VAL	-	EXPRESSION TAG	UNP Q93YN9
B	-18	PRO	-	EXPRESSION TAG	UNP Q93YN9
B	-17	ARG	-	EXPRESSION TAG	UNP Q93YN9
B	-16	GLY	-	EXPRESSION TAG	UNP Q93YN9
B	-15	SER	-	EXPRESSION TAG	UNP Q93YN9
B	-14	HIS	-	EXPRESSION TAG	UNP Q93YN9
B	-13	MET	-	EXPRESSION TAG	UNP Q93YN9
B	-12	ALA	-	EXPRESSION TAG	UNP Q93YN9
B	-11	SER	-	EXPRESSION TAG	UNP Q93YN9
B	-10	MET	-	EXPRESSION TAG	UNP Q93YN9
B	-9	THR	-	EXPRESSION TAG	UNP Q93YN9
B	-8	GLY	-	EXPRESSION TAG	UNP Q93YN9
B	-7	GLY	-	EXPRESSION TAG	UNP Q93YN9
B	-6	GLN	-	EXPRESSION TAG	UNP Q93YN9
B	-5	GLN	-	EXPRESSION TAG	UNP Q93YN9
B	-4	MET	-	EXPRESSION TAG	UNP Q93YN9
B	-3	GLY	-	EXPRESSION TAG	UNP Q93YN9
B	-2	ARG	-	EXPRESSION TAG	UNP Q93YN9
B	-1	ILE	-	EXPRESSION TAG	UNP Q93YN9
B	0	LEU	-	EXPRESSION TAG	UNP Q93YN9
B	54	SER	ALA	CONFLICT	UNP Q93YN9
B	82	CYS	GLU	ENGINEERED MUTATION	UNP Q93YN9
B	90	GLN	LYS	CONFLICT	UNP Q93YN9
B	142	CYS	SER	ENGINEERED MUTATION	UNP Q93YN9
B	157	THR	SER	CONFLICT	UNP Q93YN9
B	185	ILE	MET	CONFLICT	UNP Q93YN9
B	204	ILE	ASN	CONFLICT	UNP Q93YN9
B	224	ARG	SER	CONFLICT	UNP Q93YN9
B	321	CYS	SER	CONFLICT	UNP Q93YN9
B	325	ILE	LEU	CONFLICT	UNP Q93YN9
B	337	ARG	LYS	CONFLICT	UNP Q93YN9
B	452	ASP	-	EXPRESSION TAG	UNP Q93YN9
B	453	TYR	-	EXPRESSION TAG	UNP Q93YN9
B	454	LYS	-	EXPRESSION TAG	UNP Q93YN9
B	455	ASP	-	EXPRESSION TAG	UNP Q93YN9
B	456	ASP	-	EXPRESSION TAG	UNP Q93YN9
B	457	ASP	-	EXPRESSION TAG	UNP Q93YN9
B	458	ASP	-	EXPRESSION TAG	UNP Q93YN9
B	459	LYS	-	EXPRESSION TAG	UNP Q93YN9

- Molecule 2 is INOSITOL HEXAKISPHOSPHATE (three-letter code: IHP) (formula: $C_6H_{18}O_{24}P_6$).



Mol	Chain	Residues	Atoms				ZeroOcc	AltConf
2	A	1	Total	C	O	P	0	0
			36	6	24	6		
2	B	1	Total	C	O	P	0	0
			36	6	24	6		

- Molecule 3 is ADENOSINE-5'-DIPHOSPHATE (three-letter code: ADP) (formula: C₁₀H₁₅N₅O₁₀P₂).



Mol	Chain	Residues	Atoms					ZeroOcc	AltConf
3	A	1	Total	C	N	O	P	0	0
			27	10	5	10	2		

Continued on next page...

Continued from previous page...

Mol	Chain	Residues	Atoms					ZeroOcc	AltConf
3	B	1	Total	C	N	O	P	0	0
			27	10	5	10	2		

- Molecule 4 is MAGNESIUM ION (three-letter code: MG) (formula: Mg).

Mol	Chain	Residues	Atoms		ZeroOcc	AltConf
4	B	1	Total	Mg	0	0
			1	1		
4	A	1	Total	Mg	0	0
			1	1		

- Molecule 5 is ZINC ION (three-letter code: ZN) (formula: Zn).

Mol	Chain	Residues	Atoms		ZeroOcc	AltConf
5	B	1	Total	Zn	0	0
			1	1		
5	A	1	Total	Zn	0	0
			1	1		

WORLDWIDE
PDB
PROTEIN DATA BANK

4 Data and refinement statistics

Property	Value	Source
Space group	P 1	Depositor
Cell constants a, b, c, α , β , γ	59.76Å 59.35Å 82.23Å 83.01° 89.92° 63.41°	Depositor
Resolution (Å)	34.55 – 2.60 34.55 – 2.50	Depositor EDS
% Data completeness (in resolution range)	93.4 (34.55-2.60) 87.2 (34.55-2.50)	Depositor EDS
R_{merge}	0.10	Depositor
R_{sym}	(Not available)	Depositor
$\langle I/\sigma(I) \rangle$ ¹	3.39 (at 2.51Å)	Xtriage
Refinement program	PHENIX 1.6.3 _473	Depositor
R, R_{free}	0.224 , 0.294 0.213 , 0.287	Depositor DCC
R_{free} test set	1746 reflections (6.08%)	DCC
Wilson B-factor (Å ²)	30.8	Xtriage
Anisotropy	0.113	Xtriage
Bulk solvent k_{sol} (e/Å ³), B_{sol} (Å ²)	0.31 , 7.2	EDS
L-test for twinning ²	$\langle L \rangle = 0.49$, $\langle L^2 \rangle = 0.31$	Xtriage
Estimated twinning fraction	No twinning to report.	Xtriage
F_o, F_c correlation	0.91	EDS
Total number of atoms	6380	wwPDB-VP
Average B, all atoms (Å ²)	32.0	wwPDB-VP

Xtriage's analysis on translational NCS is as follows: *The largest off-origin peak in the Patterson function is 5.91% of the height of the origin peak. No significant pseudotranslation is detected.*

¹Intensities estimated from amplitudes.

²Theoretical values of $\langle |L| \rangle$, $\langle L^2 \rangle$ for acentric reflections are 0.5, 0.333 respectively for untwinned datasets, and 0.375, 0.2 for perfectly twinned datasets.

5 Model quality

5.1 Standard geometry

Bond lengths and bond angles in the following residue types are not validated in this section: MG, IHP, ZN, ADP

The Z score for a bond length (or angle) is the number of standard deviations the observed value is removed from the expected value. A bond length (or angle) with $|Z| > 5$ is considered an outlier worth inspection. RMSZ is the root-mean-square of all Z scores of the bond lengths (or angles).

Mol	Chain	Bond lengths		Bond angles	
		RMSZ	# Z >5	RMSZ	# Z >5
1	A	0.44	0/3170	0.60	0/4271
1	B	0.45	0/3192	0.58	0/4301
All	All	0.45	0/6362	0.59	0/8572

There are no bond length outliers.

There are no bond angle outliers.

There are no chirality outliers.

There are no planarity outliers.

5.2 Too-close contacts

In the following table, the Non-H and H(model) columns list the number of non-hydrogen atoms and hydrogen atoms in the chain respectively. The H(added) column lists the number of hydrogen atoms added and optimized by MolProbity. The Clashes column lists the number of clashes within the asymmetric unit, whereas Symm-Clashes lists symmetry related clashes.

Mol	Chain	Non-H	H(model)	H(added)	Clashes	Symm-Clashes
1	A	3114	0	3150	119	0
1	B	3136	0	3162	110	0
2	A	36	0	6	0	0
2	B	36	0	6	0	0
3	A	27	0	12	3	0
3	B	27	0	12	1	0
4	A	1	0	0	0	0
4	B	1	0	0	0	0
5	A	1	0	0	0	0
5	B	1	0	0	0	0
All	All	6380	0	6348	229	0

The all-atom clashscore is defined as the number of clashes found per 1000 atoms (including hydrogen atoms). The all-atom clashscore for this structure is 18.

The worst 5 of 229 close contacts within the same asymmetric unit are listed below, sorted by their clash magnitude.

Atom-1	Atom-2	Interatomic distance (Å)	Clash overlap (Å)
1:A:82:CYS:HB2	1:A:107:ARG:HE	0.99	1.07
1:A:107:ARG:HH11	1:A:107:ARG:HG3	1.18	1.04
1:A:82:CYS:HB2	1:A:107:ARG:NE	1.76	1.01
1:B:107:ARG:HG3	1:B:107:ARG:HH11	1.32	0.93
1:A:275:PHE:HD1	1:A:276:ILE:HD12	1.40	0.87

There are no symmetry-related clashes.

5.3 Torsion angles [i](#)

5.3.1 Protein backbone [i](#)

In the following table, the Percentiles column shows the percent Ramachandran outliers of the chain as a percentile score with respect to all X-ray entries followed by that with respect to entries of similar resolution.

The Analysed column shows the number of residues for which the backbone conformation was analysed, and the total number of residues.

Mol	Chain	Analysed	Favoured	Allowed	Outliers	Percentiles	
1	A	378/493 (77%)	350 (93%)	23 (6%)	5 (1%)	14	29
1	B	382/493 (78%)	356 (93%)	24 (6%)	2 (0%)	32	58
All	All	760/986 (77%)	706 (93%)	47 (6%)	7 (1%)	20	40

5 of 7 Ramachandran outliers are listed below:

Mol	Chain	Res	Type
1	A	394	PRO
1	A	182	LYS
1	A	314	ASP
1	A	436	ALA
1	B	234	SER

5.3.2 Protein sidechains ⓘ

In the following table, the Percentiles column shows the percent sidechain outliers of the chain as a percentile score with respect to all X-ray entries followed by that with respect to entries of similar resolution.

The Analysed column shows the number of residues for which the sidechain conformation was analysed, and the total number of residues.

Mol	Chain	Analysed	Rotameric	Outliers	Percentiles	
1	A	350/434 (81%)	329 (94%)	21 (6%)	22	44
1	B	353/434 (81%)	328 (93%)	25 (7%)	17	34
All	All	703/868 (81%)	657 (94%)	46 (6%)	20	39

5 of 46 residues with a non-rotameric sidechain are listed below:

Mol	Chain	Res	Type
1	A	418	SER
1	B	78	SER
1	B	377	SER
1	B	9	ASP
1	B	16	ARG

Some sidechains can be flipped to improve hydrogen bonding and reduce clashes. 5 of 8 such sidechains are listed below:

Mol	Chain	Res	Type
1	B	72	ASN
1	B	282	HIS
1	B	147	ASN
1	A	196	HIS
1	B	140	HIS

5.3.3 RNA ⓘ

There are no RNA molecules in this entry.

5.4 Non-standard residues in protein, DNA, RNA chains ⓘ

There are no non-standard protein/DNA/RNA residues in this entry.

5.5 Carbohydrates [i](#)

There are no carbohydrates in this entry.

5.6 Ligand geometry [i](#)

Of 8 ligands modelled in this entry, 4 are monoatomic - leaving 4 for Mogul analysis.

In the following table, the Counts columns list the number of bonds (or angles) for which Mogul statistics could be retrieved, the number of bonds (or angles) that are observed in the model and the number of bonds (or angles) that are defined in the Chemical Component Dictionary. The Link column lists molecule types, if any, to which the group is linked. The Z score for a bond length (or angle) is the number of standard deviations the observed value is removed from the expected value. A bond length (or angle) with $|Z| > 2$ is considered an outlier worth inspection. RMSZ is the root-mean-square of all Z scores of the bond lengths (or angles).

Mol	Type	Chain	Res	Link	Bond lengths			Bond angles		
					Counts	RMSZ	# $ Z > 2$	Counts	RMSZ	# $ Z > 2$
2	IHP	A	501	-	36,36,36	1.12	2 (5%)	54,60,60	1.24	6 (11%)
3	ADP	A	502	4	25,29,29	1.25	3 (12%)	24,45,45	1.52	2 (8%)
2	IHP	B	501	4	36,36,36	1.06	2 (5%)	54,60,60	1.23	5 (9%)
3	ADP	B	502	4	25,29,29	1.15	2 (8%)	24,45,45	1.51	2 (8%)

In the following table, the Chirals column lists the number of chiral outliers, the number of chiral centers analysed, the number of these observed in the model and the number defined in the Chemical Component Dictionary. Similar counts are reported in the Torsion and Rings columns. '-' means no outliers of that kind were identified.

Mol	Type	Chain	Res	Link	Chirals	Torsions	Rings
2	IHP	A	501	-	-	0/30/54/54	0/1/1/1
3	ADP	A	502	4	-	0/12/32/32	0/3/3/3
2	IHP	B	501	4	-	0/30/54/54	0/1/1/1
3	ADP	B	502	4	-	0/12/32/32	0/3/3/3

The worst 5 of 9 bond length outliers are listed below:

Mol	Chain	Res	Type	Atoms	Z	Observed(Å)	Ideal(Å)
2	A	501	IHP	P2-O12	-2.30	1.55	1.59
2	B	501	IHP	P2-O12	-2.20	1.55	1.59
2	B	501	IHP	C2-C1	-2.10	1.47	1.52
2	A	501	IHP	P5-O15	-2.03	1.56	1.59
3	A	502	ADP	O4'-C1'	2.39	1.44	1.41

The worst 5 of 15 bond angle outliers are listed below:

Mol	Chain	Res	Type	Atoms	Z	Observed(°)	Ideal(°)
3	B	502	ADP	N3-C2-N1	-5.69	123.90	128.86
3	A	502	ADP	N3-C2-N1	-5.62	123.97	128.86
2	A	501	IHP	C4-C3-C2	-4.12	101.33	110.46
2	A	501	IHP	C6-C1-C2	-3.79	102.06	110.46
2	B	501	IHP	C6-C1-C2	-3.62	102.43	110.46

There are no chirality outliers.

There are no torsion outliers.

There are no ring outliers.

2 monomers are involved in 4 short contacts:

Mol	Chain	Res	Type	Clashes	Symm-Clashes
3	A	502	ADP	3	0
3	B	502	ADP	1	0

5.7 Other polymers [i](#)

There are no such residues in this entry.

5.8 Polymer linkage issues [i](#)

There are no chain breaks in this entry.

6 Fit of model and data [i](#)

6.1 Protein, DNA and RNA chains [i](#)

In the following table, the column labelled ‘#RSRZ> 2’ contains the number (and percentage) of RSRZ outliers, followed by percent RSRZ outliers for the chain as percentile scores relative to all X-ray entries and entries of similar resolution. The OWAB column contains the minimum, median, 95th percentile and maximum values of the occupancy-weighted average B-factor per residue. The column labelled ‘Q< 0.9’ lists the number of (and percentage) of residues with an average occupancy less than 0.9.

Mol	Chain	Analysed	<RSRZ>	#RSRZ>2	OWAB(Å ²)	Q<0.9
1	A	390/493 (79%)	-0.71	0 100 100	13, 32, 56, 80	0
1	B	394/493 (79%)	-0.74	0 100 100	13, 29, 54, 82	0
All	All	784/986 (79%)	-0.73	0 100 100	13, 31, 55, 82	0

There are no RSRZ outliers to report.

6.2 Non-standard residues in protein, DNA, RNA chains [i](#)

There are no non-standard protein/DNA/RNA residues in this entry.

6.3 Carbohydrates [i](#)

There are no carbohydrates in this entry.

6.4 Ligands [i](#)

In the following table, the Atoms column lists the number of modelled atoms in the group and the number defined in the chemical component dictionary. LLDF column lists the quality of electron density of the group with respect to its neighbouring residues in protein, DNA or RNA chains. The B-factors column lists the minimum, median, 95th percentile and maximum values of B factors of atoms in the group. The column labelled ‘Q< 0.9’ lists the number of atoms with occupancy less than 0.9.

Mol	Type	Chain	Res	Atoms	RSCC	RSR	LLDF	B-factors(Å ²)	Q<0.9
3	ADP	A	502	27/27	0.93	0.14	1.57	23,33,45,53	0
3	ADP	B	502	27/27	0.93	0.13	0.45	19,27,38,42	0
2	IHP	B	501	36/36	0.99	0.10	-0.49	11,20,31,32	0
2	IHP	A	501	36/36	0.98	0.09	-0.91	13,19,27,32	0
4	MG	A	503	1/1	0.98	0.10	-1.74	29,29,29,29	0

Continued on next page...

Continued from previous page...

Mol	Type	Chain	Res	Atoms	RSCC	RSR	LLDF	B-factors(\AA^2)	Q<0.9
5	ZN	B	504	1/1	0.99	0.10	-	27,27,27,27	0
5	ZN	A	504	1/1	0.99	0.10	-	23,23,23,23	0
4	MG	B	503	1/1	0.98	0.09	-	29,29,29,29	0

6.5 Other polymers [i](#)

There are no such residues in this entry.