



Full wwPDB X-ray Structure Validation Report ⓘ

Nov 8, 2017 – 05:42 PM EST

PDB ID : 4LXK
Title : Crystal Structure of Human Beta Secretase in Complex with compound 11d
Authors : Rondeau, J.M.; Bourgier, E.
Deposited on : unknown
Resolution : 2.05 Å(reported)

This is a Full wwPDB X-ray Structure Validation Report for a publicly released PDB entry.

We welcome your comments at validation@mail.wwpdb.org

A user guide is available at

<http://wwpdb.org/validation/2016/XrayValidationReportHelp>

with specific help available everywhere you see the ⓘ symbol.

The following versions of software and data (see [references ⓘ](#)) were used in the production of this report:

MolProbity : 4.02b-467
Mogul : 1.7.2 (RC1), CSD as538be (2017)
Xtriage (Phenix) : 1.9-1692
EDS : rb-20030345
Percentile statistics : 20161228.v01 (using entries in the PDB archive December 28th 2016)
Refmac : 5.8.0135
CCP4 : 6.5.0
Ideal geometry (proteins) : Engh & Huber (2001)
Ideal geometry (DNA, RNA) : Parkinson et al. (1996)
Validation Pipeline (wwPDB-VP) : rb-20030345

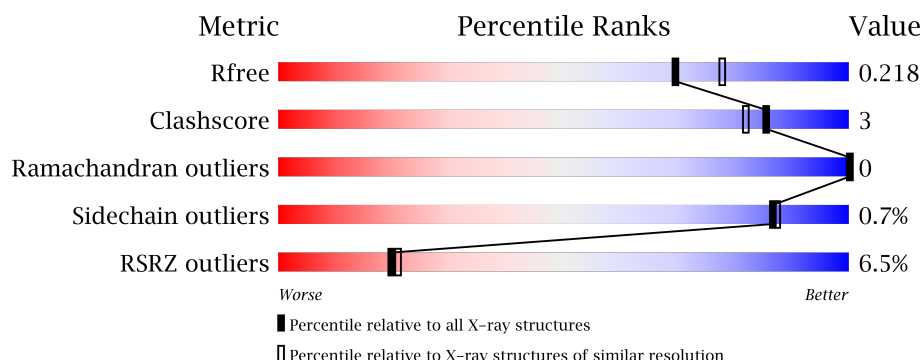
1 Overall quality at a glance

The following experimental techniques were used to determine the structure:

X-RAY DIFFRACTION

The reported resolution of this entry is 2.05 Å.

Percentile scores (ranging between 0-100) for global validation metrics of the entry are shown in the following graphic. The table shows the number of entries on which the scores are based.



Metric	Whole archive (#Entries)	Similar resolution (#Entries, resolution range(Å))
R_{free}	100719	1316 (2.04-2.04)
Clashscore	112137	1394 (2.04-2.04)
Ramachandran outliers	110173	1383 (2.04-2.04)
Sidechain outliers	110143	1383 (2.04-2.04)
RSRZ outliers	101464	1319 (2.04-2.04)

The table below summarises the geometric issues observed across the polymeric chains and their fit to the electron density. The red, orange, yellow and green segments on the lower bar indicate the fraction of residues that contain outliers for ≥ 3 , 2, 1 and 0 types of geometric quality criteria. A grey segment represents the fraction of residues that are not modelled. The numeric value for each fraction is indicated below the corresponding segment, with a dot representing fractions $\leq 5\%$. The upper red bar (where present) indicates the fraction of residues that have poor fit to the electron density. The numeric value is given above the bar.

Mol	Chain	Length	Quality of chain
1	A	402	<div> <div>3%</div> <div>87%</div> <div>7%</div> <div>6%</div> </div>
1	B	402	<div> <div>8%</div> <div>85%</div> <div>9%</div> <div>6%</div> </div>
1	C	402	<div> <div>7%</div> <div>87%</div> <div>8%</div> <div>5%</div> </div>

2 Entry composition

There are 4 unique types of molecules in this entry. The entry contains 9680 atoms, of which 0 are hydrogens and 0 are deuteriums.

In the tables below, the ZeroOcc column contains the number of atoms modelled with zero occupancy, the AltConf column contains the number of residues with at least one atom in alternate conformation and the Trace column contains the number of residues modelled with at most 2 atoms.

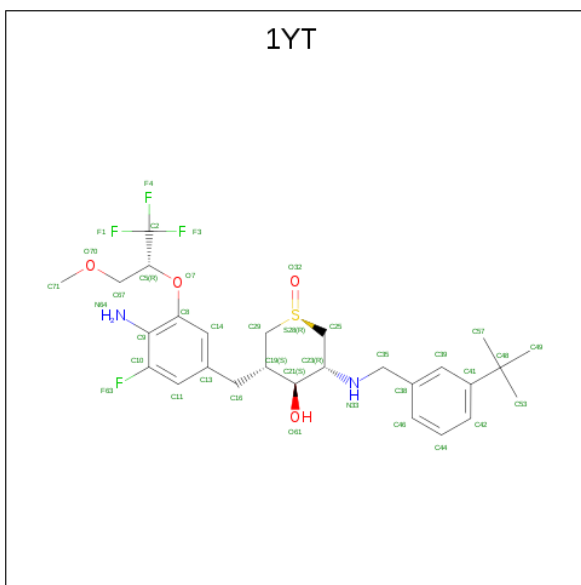
- Molecule 1 is a protein called Beta-secretase 1.

Mol	Chain	Residues	Atoms					ZeroOcc	AltConf	Trace
1	A	376	Total	C	N	O	S	0	2	0
			2974	1902	495	563	14			
1	B	378	Total	C	N	O	S	0	2	0
			2984	1908	497	565	14			
1	C	381	Total	C	N	O	S	0	0	0
			2993	1917	497	565	14			

There are 6 discrepancies between the modelled and reference sequences:

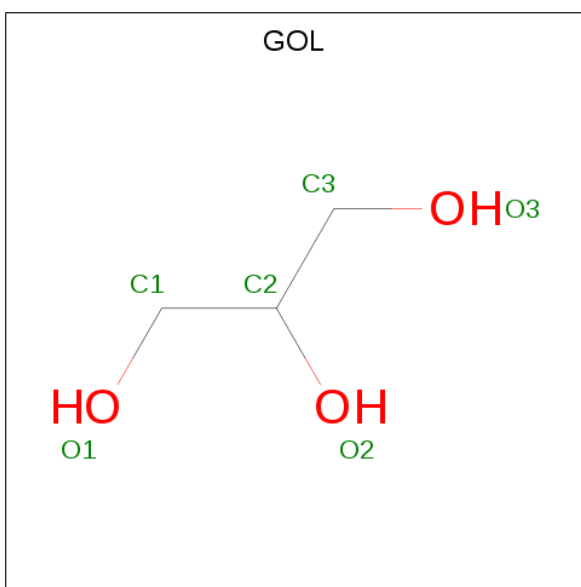
Chain	Residue	Modelled	Actual	Comment	Reference
A	33P	GLY	-	EXPRESSION TAG	UNP P56817
A	34P	PRO	-	EXPRESSION TAG	UNP P56817
B	33P	GLY	-	EXPRESSION TAG	UNP P56817
B	34P	PRO	-	EXPRESSION TAG	UNP P56817
C	33P	GLY	-	EXPRESSION TAG	UNP P56817
C	34P	PRO	-	EXPRESSION TAG	UNP P56817

- Molecule 2 is (1R,3S,4S,5R)-3-(4-amino-3-fluoro-5-([(2R)-1,1,1-trifluoro-3-methoxypropyl]oxy)benzyl)-5-[(3-tert-butylbenzyl)amino]tetrahydro-2H-thiopyran-4-ol 1-oxide (three-letter code: 1YT) (formula: C₂₇H₃₆F₄N₂O₄S).



Mol	Chain	Residues	Atoms						ZeroOcc	AltConf
2	A	1	Total 38	C 27	F 4	N 2	O 4	S 1	0	0
2	B	1	Total 38	C 27	F 4	N 2	O 4	S 1	0	0
2	C	1	Total 38	C 27	F 4	N 2	O 4	S 1	0	0

- Molecule 3 is GLYCEROL (three-letter code: GOL) (formula: $\text{C}_3\text{H}_8\text{O}_3$).



Mol	Chain	Residues	Atoms			ZeroOcc	AltConf
3	B	1	Total	C	O	0	0
			6	3	3		

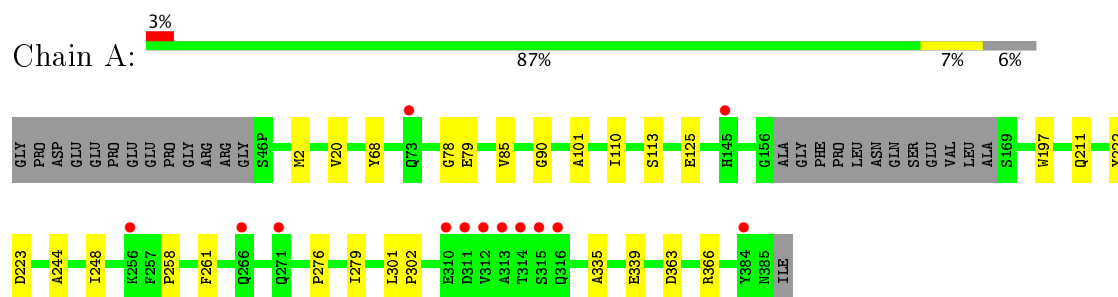
- Molecule 4 is water.

Mol	Chain	Residues	Atoms		ZeroOcc	AltConf
4	A	193	Total 193	O 193	0	0
4	B	198	Total 198	O 198	0	0
4	C	218	Total 218	O 218	0	0

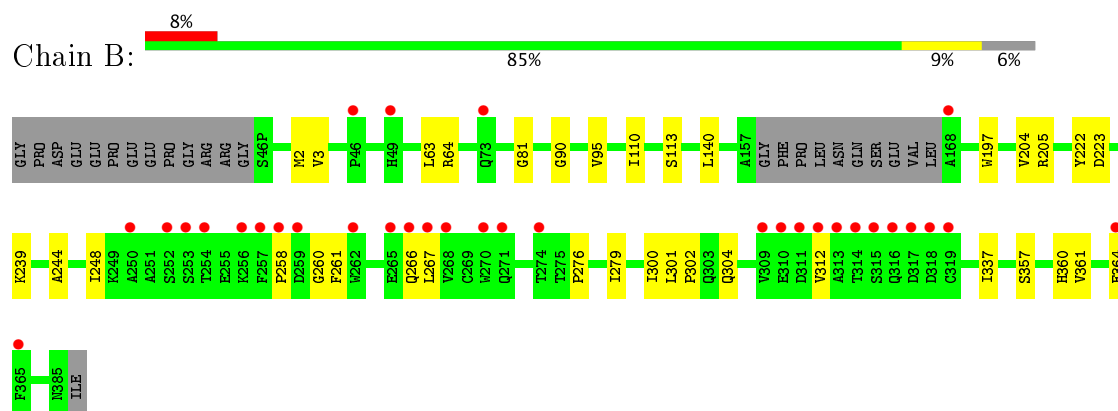
3 Residue-property plots [i](#)

These plots are drawn for all protein, RNA and DNA chains in the entry. The first graphic for a chain summarises the proportions of the various outlier classes displayed in the second graphic. The second graphic shows the sequence view annotated by issues in geometry and electron density. Residues are color-coded according to the number of geometric quality criteria for which they contain at least one outlier: green = 0, yellow = 1, orange = 2 and red = 3 or more. A red dot above a residue indicates a poor fit to the electron density ($RSRZ > 2$). Stretches of 2 or more consecutive residues without any outlier are shown as a green connector. Residues present in the sample, but not in the model, are shown in grey.

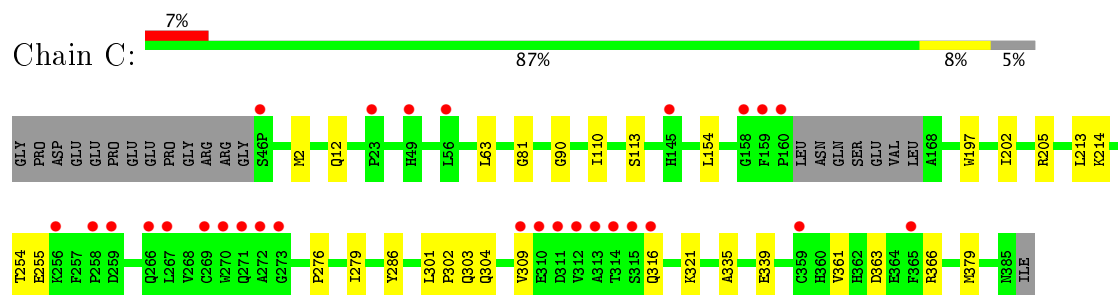
• Molecule 1: Beta-secretase 1



• Molecule 1: Beta-secretase 1



• Molecule 1: Beta-secretase 1



4 Data and refinement statistics

Property	Value	Source
Space group	P 1 21 1	Depositor
Cell constants a, b, c, α , β , γ	82.29Å 103.54Å 100.43Å 90.00° 104.27° 90.00°	Depositor
Resolution (Å)	39.88 – 2.05 39.88 – 2.05	Depositor EDS
% Data completeness (in resolution range)	99.5 (39.88-2.05) 99.7 (39.88-2.05)	Depositor EDS
R_{merge}	0.06	Depositor
R_{sym}	(Not available)	Depositor
$\langle I/\sigma(I) \rangle$ ¹	2.15 (at 2.05Å)	Xtriage
Refinement program	CNS, CNX 2002	Depositor
R, R_{free}	0.199 , 0.224 0.194 , 0.218	Depositor DCC
R_{free} test set	5146 reflections (5.32%)	DCC
Wilson B-factor (Å ²)	37.6	Xtriage
Anisotropy	0.390	Xtriage
Bulk solvent k_{sol} (e/Å ³), B_{sol} (Å ²)	0.36 , 50.6	EDS
L-test for twinning ²	$\langle L \rangle = 0.49$, $\langle L^2 \rangle = 0.32$	Xtriage
Estimated twinning fraction	No twinning to report.	Xtriage
F_o, F_c correlation	0.96	EDS
Total number of atoms	9680	wwPDB-VP
Average B, all atoms (Å ²)	44.0	wwPDB-VP

Xtriage's analysis on translational NCS is as follows: *The largest off-origin peak in the Patterson function is 4.19% of the height of the origin peak. No significant pseudotranslation is detected.*

¹Intensities estimated from amplitudes.

²Theoretical values of $\langle |L| \rangle$, $\langle L^2 \rangle$ for acentric reflections are 0.5, 0.333 respectively for untwinned datasets, and 0.375, 0.2 for perfectly twinned datasets.

5 Model quality [i](#)

5.1 Standard geometry [i](#)

Bond lengths and bond angles in the following residue types are not validated in this section: GOL, 1YT

The Z score for a bond length (or angle) is the number of standard deviations the observed value is removed from the expected value. A bond length (or angle) with $|Z| > 5$ is considered an outlier worth inspection. RMSZ is the root-mean-square of all Z scores of the bond lengths (or angles).

Mol	Chain	Bond lengths		Bond angles	
		RMSZ	# Z >5	RMSZ	# Z >5
1	A	0.28	0/3049	0.46	0/4143
1	B	0.28	0/3059	0.46	0/4157
1	C	0.28	0/3070	0.47	0/4173
All	All	0.28	0/9178	0.46	0/12473

There are no bond length outliers.

There are no bond angle outliers.

There are no chirality outliers.

There are no planarity outliers.

5.2 Too-close contacts [i](#)

In the following table, the Non-H and H(model) columns list the number of non-hydrogen atoms and hydrogen atoms in the chain respectively. The H(added) column lists the number of hydrogen atoms added and optimized by MolProbity. The Clashes column lists the number of clashes within the asymmetric unit, whereas Symm-Clashes lists symmetry related clashes.

Mol	Chain	Non-H	H(model)	H(added)	Clashes	Symm-Clashes
1	A	2974	0	2880	14	0
1	B	2984	0	2890	17	0
1	C	2993	0	2899	17	0
2	A	38	0	36	0	0
2	B	38	0	36	0	0
2	C	38	0	36	0	0
3	B	6	0	8	0	0
4	A	193	0	0	2	0
4	B	198	0	0	0	0
4	C	218	0	0	0	0
All	All	9680	0	8785	47	0

The all-atom clashscore is defined as the number of clashes found per 1000 atoms (including hydrogen atoms). The all-atom clashscore for this structure is 3.

All (47) close contacts within the same asymmetric unit are listed below, sorted by their clash magnitude.

Atom-1	Atom-2	Interatomic distance (Å)	Clash overlap (Å)
1:B:357:SER:O	1:B:360:HIS:HB3	1.99	0.62
1:A:335:ALA:O	1:A:339:GLU:HG3	2.01	0.61
1:C:304:GLN:HG3	1:C:361:VAL:HG21	1.84	0.59
1:A:110:ILE:HB	1:A:113:SER:HB3	1.87	0.57
1:A:2:MET:HG2	1:A:90:GLY:HA2	1.87	0.57
1:C:335:ALA:O	1:C:339:GLU:HG3	2.05	0.56
1:B:110:ILE:HB	1:B:113:SER:HB3	1.87	0.56
1:C:363:ASP:HB3	1:C:366:ARG:O	2.06	0.56
1:C:110:ILE:HB	1:C:113:SER:HB3	1.88	0.55
1:B:267:LEU:HD21	1:B:312:VAL:HG13	1.87	0.55
1:B:2:MET:HG2	1:B:90:GLY:HA2	1.88	0.55
1:C:2:MET:HG2	1:C:90:GLY:HA2	1.91	0.53
1:A:125:GLU:HG3	4:A:783:HOH:O	2.11	0.51
1:C:254:THR:HG21	1:C:279:ILE:HG21	1.93	0.50
1:B:276:PRO:O	1:B:279:ILE:HG12	2.11	0.49
1:A:79:GLU:HG3	4:A:617:HOH:O	2.12	0.49
1:B:204:VAL:O	1:B:205:ARG:HG2	2.13	0.48
1:C:276:PRO:O	1:C:279:ILE:HG12	2.14	0.48
1:C:12:GLN:OE1	1:C:113:SER:HA	2.15	0.47
1:A:363:ASP:HB3	1:A:366:ARG:O	2.15	0.47
1:B:300:ILE:HD13	1:B:337:ILE:CD1	2.45	0.46
1:B:301:LEU:HB3	1:B:302:PRO:HD2	1.96	0.46
1:B:239:LYS:HE3	1:B:239:LYS:HB3	1.61	0.46
1:B:244:ALA:O	1:B:248:ILE:HG13	2.17	0.45
1:C:303:GLN:HB2	1:C:361:VAL:HG11	1.97	0.45
1:B:63:LEU:HG	1:B:81:GLY:HA2	1.99	0.44
1:B:304:GLN:CG	1:B:361:VAL:HG21	2.48	0.44
1:A:244:ALA:O	1:A:248:ILE:HG13	2.17	0.44
1:B:222:TYR:HA	1:B:223:ASP:HA	1.65	0.43
1:C:205:ARG:HB3	1:C:286:TYR:HB2	2.00	0.43
1:B:260:GLY:HA3	1:B:266:GLN:OE1	2.19	0.43
1:B:258:PRO:O	1:B:261:PHE:HB3	2.19	0.43
1:C:254:THR:HG23	1:C:255:GLU:HG3	2.00	0.43
1:A:68:TYR:CD1	1:B:3:VAL:HG11	2.54	0.43
1:A:301:LEU:HB3	1:A:302:PRO:HD2	2.01	0.43
1:C:154:LEU:O	1:C:339:GLU:HA	2.19	0.42
1:A:276:PRO:O	1:A:279:ILE:HG12	2.19	0.42

Continued on next page...

Continued from previous page...

Atom-1	Atom-2	Interatomic distance (Å)	Clash overlap (Å)
1:C:309:VAL:HG21	1:C:321:LYS:HG3	2.02	0.42
1:A:258:PRO:O	1:A:261:PHE:HB3	2.19	0.41
1:C:202:ILE:CD1	1:C:379:MET:HG3	2.50	0.41
1:C:63:LEU:HG	1:C:81:GLY:HA2	2.02	0.41
1:A:222:TYR:HA	1:A:223:ASP:HA	1.66	0.41
1:A:78:GLY:HA3	1:A:101:ALA:O	2.21	0.41
1:C:213:LEU:O	1:C:214:LYS:HB2	2.21	0.41
1:C:301:LEU:HB3	1:C:302:PRO:HD2	2.04	0.40
1:A:20:VAL:HG12	1:A:85:VAL:HG22	2.03	0.40
1:B:95:VAL:HG11	1:B:140:LEU:HA	2.03	0.40

There are no symmetry-related clashes.

5.3 Torsion angles ⓘ

5.3.1 Protein backbone ⓘ

In the following table, the Percentiles column shows the percent Ramachandran outliers of the chain as a percentile score with respect to all X-ray entries followed by that with respect to entries of similar resolution.

The Analysed column shows the number of residues for which the backbone conformation was analysed, and the total number of residues.

Mol	Chain	Analysed	Favoured	Allowed	Outliers	Percentiles	
1	A	374/402 (93%)	366 (98%)	8 (2%)	0	100	100
1	B	376/402 (94%)	364 (97%)	12 (3%)	0	100	100
1	C	377/402 (94%)	369 (98%)	8 (2%)	0	100	100
All	All	1127/1206 (93%)	1099 (98%)	28 (2%)	0	100	100

There are no Ramachandran outliers to report.

5.3.2 Protein sidechains ⓘ

In the following table, the Percentiles column shows the percent sidechain outliers of the chain as a percentile score with respect to all X-ray entries followed by that with respect to entries of similar resolution.

The Analysed column shows the number of residues for which the sidechain conformation was analysed, and the total number of residues.

Mol	Chain	Analysed	Rotameric	Outliers	Percentiles	
1	A	323/342 (94%)	321 (99%)	2 (1%)	89	89
1	B	323/342 (94%)	320 (99%)	3 (1%)	82	82
1	C	324/342 (95%)	322 (99%)	2 (1%)	89	89
All	All	970/1026 (94%)	963 (99%)	7 (1%)	87	87

All (7) residues with a non-rotameric sidechain are listed below:

Mol	Chain	Res	Type
1	A	197	TRP
1	A	211	GLN
1	B	64	ARG
1	B	197	TRP
1	B	364	GLU
1	C	197	TRP
1	C	316	GLN

Some sidechains can be flipped to improve hydrogen bonding and reduce clashes. All (8) such sidechains are listed below:

Mol	Chain	Res	Type
1	A	114	ASN
1	A	326	GLN
1	B	114	ASN
1	B	278	ASN
1	B	293	ASN
1	B	326	GLN
1	C	114	ASN
1	C	326	GLN

5.3.3 RNA ⓘ

There are no RNA molecules in this entry.

5.4 Non-standard residues in protein, DNA, RNA chains ⓘ

There are no non-standard protein/DNA/RNA residues in this entry.

5.5 Carbohydrates ⓘ

There are no carbohydrates in this entry.

5.6 Ligand geometry

4 ligands are modelled in this entry.

In the following table, the Counts columns list the number of bonds (or angles) for which Mogul statistics could be retrieved, the number of bonds (or angles) that are observed in the model and the number of bonds (or angles) that are defined in the Chemical Component Dictionary. The Link column lists molecule types, if any, to which the group is linked. The Z score for a bond length (or angle) is the number of standard deviations the observed value is removed from the expected value. A bond length (or angle) with $|Z| > 2$ is considered an outlier worth inspection. RMSZ is the root-mean-square of all Z scores of the bond lengths (or angles).

Mol	Type	Chain	Res	Link	Bond lengths			Bond angles		
					Counts	RMSZ	# $ Z > 2$	Counts	RMSZ	# $ Z > 2$
2	1YT	A	501	-	36,40,40	1.51	6 (16%)	49,59,59	1.24	5 (10%)
3	GOL	B	501	-	5,5,5	0.70	0	5,5,5	0.42	0
2	1YT	B	502	-	36,40,40	1.55	6 (16%)	49,59,59	1.23	5 (10%)
2	1YT	C	501	-	36,40,40	1.54	6 (16%)	49,59,59	1.21	3 (6%)

In the following table, the Chirals column lists the number of chiral outliers, the number of chiral centers analysed, the number of these observed in the model and the number defined in the Chemical Component Dictionary. Similar counts are reported in the Torsion and Rings columns. '-' means no outliers of that kind were identified.

Mol	Type	Chain	Res	Link	Chirals	Torsions	Rings
2	1YT	A	501	-	-	0/28/44/44	0/3/3/3
3	GOL	B	501	-	-	0/4/4/4	0/0/0/0
2	1YT	B	502	-	-	0/28/44/44	0/3/3/3
2	1YT	C	501	-	-	0/28/44/44	0/3/3/3

All (18) bond length outliers are listed below:

Mol	Chain	Res	Type	Atoms	Z	Observed(Å)	Ideal(Å)
2	C	501	1YT	C39-C41	2.19	1.43	1.39
2	A	501	1YT	C39-C41	2.24	1.43	1.39
2	B	502	1YT	C39-C41	2.27	1.43	1.39
2	A	501	1YT	C67-C5	2.39	1.56	1.50
2	B	502	1YT	C67-C5	2.40	1.56	1.50
2	C	501	1YT	C67-C5	2.42	1.56	1.50
2	B	502	1YT	C42-C41	2.42	1.43	1.39
2	A	501	1YT	C19-C21	2.46	1.56	1.53
2	B	502	1YT	C16-C19	2.50	1.57	1.53
2	A	501	1YT	C11-C10	2.52	1.42	1.37
2	A	501	1YT	C42-C41	2.54	1.43	1.39
2	C	501	1YT	C11-C10	2.55	1.42	1.37

Continued on next page...

Continued from previous page...

Mol	Chain	Res	Type	Atoms	Z	Observed(Å)	Ideal(Å)
2	C	501	1YT	C42-C41	2.58	1.43	1.39
2	C	501	1YT	C16-C19	2.58	1.57	1.53
2	A	501	1YT	C16-C19	2.64	1.57	1.53
2	B	502	1YT	C11-C10	2.65	1.42	1.37
2	C	501	1YT	C19-C21	2.69	1.56	1.53
2	B	502	1YT	C19-C21	2.93	1.56	1.53

All (13) bond angle outliers are listed below:

Mol	Chain	Res	Type	Atoms	Z	Observed(°)	Ideal(°)
2	A	501	1YT	C11-C10-C9	-2.14	120.27	123.37
2	B	502	1YT	C11-C10-C9	-2.11	120.32	123.37
2	B	502	1YT	C53-C48-C41	2.14	115.47	110.35
2	A	501	1YT	C53-C48-C41	2.24	115.69	110.35
2	C	501	1YT	O7-C8-C9	3.08	118.74	114.64
2	B	502	1YT	O7-C8-C9	3.10	118.76	114.64
2	A	501	1YT	O7-C8-C9	3.32	119.05	114.64
2	A	501	1YT	C35-N33-C23	3.38	122.11	114.95
2	C	501	1YT	C8-C9-C10	3.43	119.39	116.03
2	A	501	1YT	C8-C9-C10	3.49	119.45	116.03
2	B	502	1YT	C35-N33-C23	3.50	122.38	114.95
2	C	501	1YT	C35-N33-C23	3.51	122.40	114.95
2	B	502	1YT	C8-C9-C10	3.53	119.49	116.03

There are no chirality outliers.

There are no torsion outliers.

There are no ring outliers.

No monomer is involved in short contacts.

5.7 Other polymers

There are no such residues in this entry.

5.8 Polymer linkage issues

There are no chain breaks in this entry.

6 Fit of model and data ⓘ

6.1 Protein, DNA and RNA chains ⓘ

In the following table, the column labelled ‘#RSRZ> 2’ contains the number (and percentage) of RSRZ outliers, followed by percent RSRZ outliers for the chain as percentile scores relative to all X-ray entries and entries of similar resolution. The OWAB column contains the minimum, median, 95th percentile and maximum values of the occupancy-weighted average B-factor per residue. The column labelled ‘Q< 0.9’ lists the number of (and percentage) of residues with an average occupancy less than 0.9.

Mol	Chain	Analysed	<RSRZ>	#RSRZ>2		OWAB(Å ²)	Q<0.9
1	A	376/402 (93%)	0.24	13 (3%)	44 49	26, 40, 74, 108	0
1	B	378/402 (94%)	0.37	33 (8%)	11 11	25, 41, 78, 113	0
1	C	381/402 (94%)	0.34	28 (7%)	16 17	27, 41, 75, 110	0
All	All	1135/1206 (94%)	0.32	74 (6%)	20 21	25, 41, 76, 113	0

All (74) RSRZ outliers are listed below:

Mol	Chain	Res	Type	RSRZ
1	B	312	VAL	11.4
1	B	314	THR	10.5
1	C	314	THR	10.4
1	A	312	VAL	10.0
1	C	313	ALA	9.7
1	C	312	VAL	9.2
1	B	313	ALA	9.1
1	A	314	THR	9.1
1	A	313	ALA	8.8
1	C	315	SER	7.6
1	B	315	SER	7.4
1	B	310	GLU	6.2
1	A	316	GLN	5.6
1	A	311	ASP	5.3
1	C	310	GLU	5.2
1	B	316	GLN	5.1
1	B	311	ASP	5.0
1	C	311	ASP	4.6
1	B	365	PHE	4.5
1	B	317	ASP	4.5
1	A	310	GLU	4.4
1	A	315	SER	4.4
1	C	316	GLN	4.3

Continued on next page...

Continued from previous page...

Mol	Chain	Res	Type	RSRZ
1	C	272	ALA	4.2
1	C	365	PHE	4.1
1	B	268	VAL	4.0
1	A	256	LYS	3.9
1	C	256	LYS	3.7
1	C	160	PRO	3.7
1	B	256	LYS	3.6
1	B	168	ALA	3.6
1	B	254	THR	3.6
1	B	253	SER	3.5
1	B	364	GLU	3.4
1	A	73[A]	GLN	3.3
1	B	250	ALA	3.2
1	B	270	TRP	3.2
1	B	252	SER	3.1
1	C	145	HIS	3.1
1	B	262	TRP	3.0
1	B	266	GLN	3.0
1	C	258	PRO	2.9
1	B	309	VAL	2.8
1	B	274	THR	2.8
1	C	23	PRO	2.8
1	C	273	GLY	2.8
1	B	319	CYS	2.7
1	C	46(P)	SER	2.7
1	B	257	PHE	2.7
1	C	259	ASP	2.7
1	A	145	HIS	2.7
1	C	271	GLN	2.6
1	B	267	LEU	2.6
1	B	258	PRO	2.5
1	A	266	GLN	2.5
1	C	56	LEU	2.5
1	C	49	HIS	2.5
1	B	265	GLU	2.5
1	A	384	TYR	2.4
1	C	267	LEU	2.3
1	C	270	TRP	2.3
1	B	271	GLN	2.3
1	C	309	VAL	2.3
1	B	46	PRO	2.3
1	B	259	ASP	2.2

Continued on next page...

Continued from previous page...

Mol	Chain	Res	Type	RSRZ
1	C	266	GLN	2.2
1	B	73[A]	GLN	2.2
1	C	159	PHE	2.2
1	B	318	ASP	2.2
1	C	269	CYS	2.2
1	B	49	HIS	2.1
1	C	158	GLY	2.1
1	C	359	CYS	2.0
1	A	271	GLN	2.0

6.2 Non-standard residues in protein, DNA, RNA chains [i](#)

There are no non-standard protein/DNA/RNA residues in this entry.

6.3 Carbohydrates [i](#)

There are no carbohydrates in this entry.

6.4 Ligands [i](#)

In the following table, the Atoms column lists the number of modelled atoms in the group and the number defined in the chemical component dictionary. LLDF column lists the quality of electron density of the group with respect to its neighbouring residues in protein, DNA or RNA chains. The B-factors column lists the minimum, median, 95th percentile and maximum values of B factors of atoms in the group. The column labelled 'Q < 0.9' lists the number of atoms with occupancy less than 0.9.

Mol	Type	Chain	Res	Atoms	RSCC	RSR	LLDF	B-factors(Å ²)	Q<0.9
3	GOL	B	501	6/6	0.91	0.15	1.10	46,48,49,52	0
2	1YT	C	501	38/38	0.96	0.13	0.08	30,36,44,52	0
2	1YT	A	501	38/38	0.95	0.14	-0.13	28,35,45,52	0
2	1YT	B	502	38/38	0.96	0.12	-0.31	27,34,45,50	0

6.5 Other polymers [i](#)

There are no such residues in this entry.