



Full wwPDB X-ray Structure Validation Report ⓘ

Feb 13, 2017 – 06:49 am GMT

PDB ID : 1M0O
Title : Structure of Dialkylglycine Decarboxylase Complexed with 1-Amino-1-methylpropanephosphonate
Authors : Liu, W.; Rogers, C.J.; Fisher, A.J.; Toney, M.D.
Deposited on : 2002-06-13
Resolution : 2.40 Å(reported)

This is a Full wwPDB X-ray Structure Validation Report for a publicly released PDB entry.

We welcome your comments at validation@mail.wwpdb.org

A user guide is available at

<http://wwpdb.org/validation/2016/XrayValidationReportHelp>

with specific help available everywhere you see the ⓘ symbol.

The following versions of software and data (see [references ⓘ](#)) were used in the production of this report:

MolProbity	:	4.02b-467
Mogul	:	1.7.2 (RC1), CSD as538be (2017)
Xtriage (Phenix)	:	NOT EXECUTED
EDS	:	NOT EXECUTED
Percentile statistics	:	20161228.v01 (using entries in the PDB archive December 28th 2016)
Ideal geometry (proteins)	:	Engh & Huber (2001)
Ideal geometry (DNA, RNA)	:	Parkinson et al. (1996)
Validation Pipeline (wwPDB-VP)	:	recalc28949

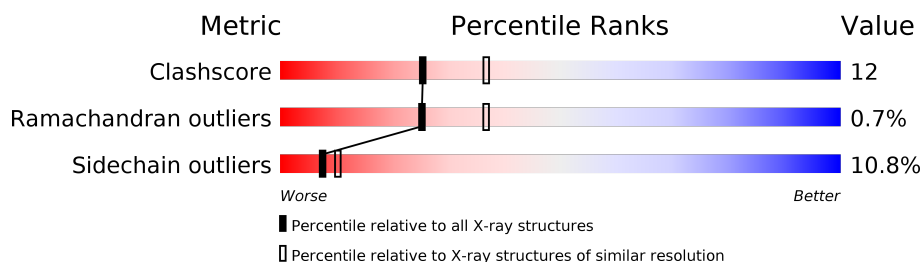
1 Overall quality at a glance

The following experimental techniques were used to determine the structure:

X-RAY DIFFRACTION

The reported resolution of this entry is 2.40 Å.

Percentile scores (ranging between 0-100) for global validation metrics of the entry are shown in the following graphic. The table shows the number of entries on which the scores are based.



Metric	Whole archive (#Entries)	Similar resolution (#Entries, resolution range(Å))
Clashscore	112137	3674 (2.40-2.40)
Ramachandran outliers	110173	3616 (2.40-2.40)
Sidechain outliers	110143	3617 (2.40-2.40)

The table below summarises the geometric issues observed across the polymeric chains and their fit to the electron density. The red, orange, yellow and green segments on the lower bar indicate the fraction of residues that contain outliers for ≥ 3 , 2, 1 and 0 types of geometric quality criteria. A grey segment represents the fraction of residues that are not modelled. The numeric value for each fraction is indicated below the corresponding segment, with a dot representing fractions $\leq 5\%$. The upper red bar (where present) indicates the fraction of residues that have poor fit to the electron density. The numeric value is given above the bar.

Note EDS was not executed.

Mol	Chain	Length	Quality of chain
1	A	433	

2 Entry composition

There are 5 unique types of molecules in this entry. The entry contains 3446 atoms, of which 0 are hydrogens and 0 are deuteriums.

In the tables below, the ZeroOcc column contains the number of atoms modelled with zero occupancy, the AltConf column contains the number of residues with at least one atom in alternate conformation and the Trace column contains the number of residues modelled with at most 2 atoms.

- Molecule 1 is a protein called 2,2-Dialkylglycine decarboxylase.

Mol	Chain	Residues	Atoms					ZeroOcc	AltConf	Trace
1	A	431	Total	C	N	O	S	0	0	0
			3252	2051	576	607	18			

There are 2 discrepancies between the modelled and reference sequences:

Chain	Residue	Modelled	Actual	Comment	Reference
A	15	HIS	GLN	SEE REMARK 999	UNP P16932
A	81	GLU	GLY	SEE REMARK 999	UNP P16932

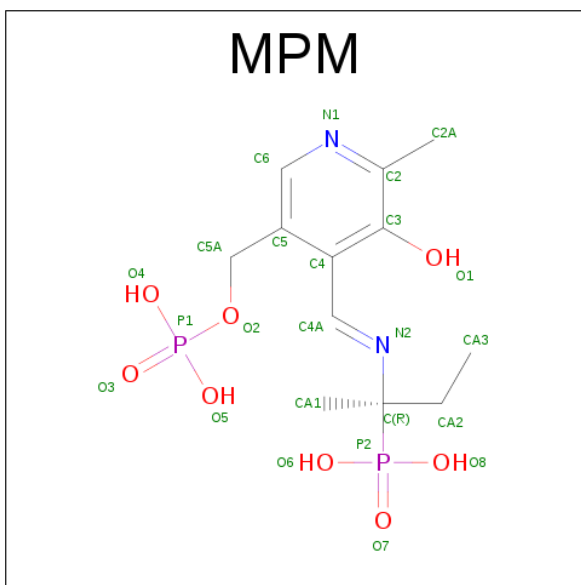
- Molecule 2 is POTASSIUM ION (three-letter code: K) (formula: K).

Mol	Chain	Residues	Atoms		ZeroOcc	AltConf
2	A	1	Total	K	0	0
			1	1		

- Molecule 3 is SODIUM ION (three-letter code: NA) (formula: Na).

Mol	Chain	Residues	Atoms		ZeroOcc	AltConf
3	A	1	Total	Na	0	0
			1	1		

- Molecule 4 is (1R)-1-[(1E)-{3-HYDROXY-2-METHYL-5-[(PHOSPHONOOXY)METHYL]PYRIDIN-4-YL}METHYLENE)AMINO]-1-METHYLPROPYLPHOSPHONIC ACID (three-letter code: MPM) (formula: C₁₂H₂₀N₂O₈P₂).



Mol	Chain	Residues	Atoms					ZeroOcc	AltConf
4	A	1	Total	C	N	O	P	0	0
			24	12	2	8	2		

- Molecule 5 is water.

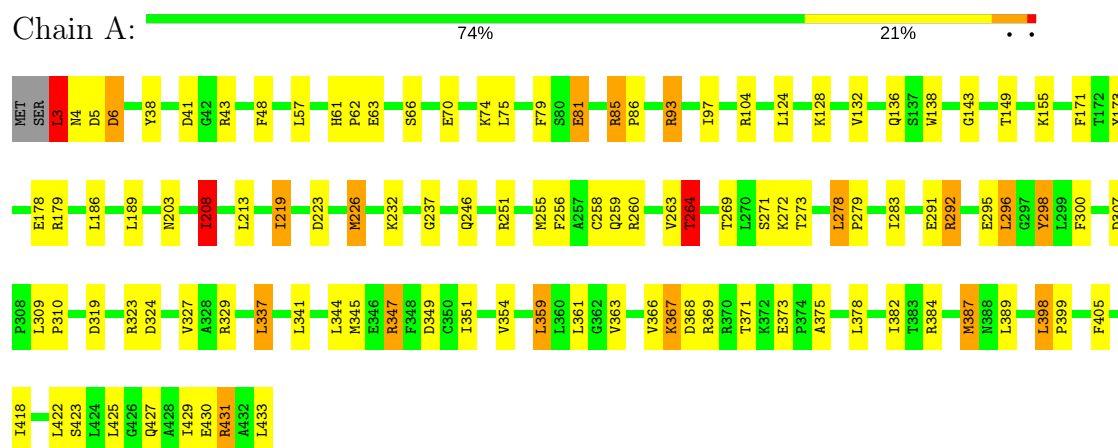
Mol	Chain	Residues	Atoms		ZeroOcc	AltConf
5	A	168	Total	O	0	0
			168	168		

3 Residue-property plots

These plots are drawn for all protein, RNA and DNA chains in the entry. The first graphic for a chain summarises the proportions of the various outlier classes displayed in the second graphic. The second graphic shows the sequence view annotated by issues in geometry and electron density. Residues are color-coded according to the number of geometric quality criteria for which they contain at least one outlier: green = 0, yellow = 1, orange = 2 and red = 3 or more. A red dot above a residue indicates a poor fit to the electron density ($RSRZ > 2$). Stretches of 2 or more consecutive residues without any outlier are shown as a green connector. Residues present in the sample, but not in the model, are shown in grey.

Note EDS was not executed.

- Molecule 1: 2,2-Dialkylglycine decarboxylase



4 Data and refinement statistics

Xtriage (Phenix) and EDS were not executed - this section is therefore incomplete.

Property	Value	Source
Space group	P 64 2 2	Depositor
Cell constants a, b, c, α , β , γ	152.84Å 152.84Å 86.36Å 90.00° 90.00° 120.00°	Depositor
Resolution (Å)	20.00 – 2.40	Depositor
% Data completeness (in resolution range)	99.9 (20.00-2.40)	Depositor
R_{merge}	0.09	Depositor
R_{sym}	(Not available)	Depositor
Refinement program	TNT	Depositor
R, R_{free}	0.139 , 0.201	Depositor
Estimated twinning fraction	No twinning to report.	Xtriage
Total number of atoms	3446	wwPDB-VP
Average B, all atoms (Å ²)	38.0	wwPDB-VP

5 Model quality

5.1 Standard geometry

Bond lengths and bond angles in the following residue types are not validated in this section: NA, K, MPM

The Z score for a bond length (or angle) is the number of standard deviations the observed value is removed from the expected value. A bond length (or angle) with $|Z| > 5$ is considered an outlier worth inspection. RMSZ is the root-mean-square of all Z scores of the bond lengths (or angles).

Mol	Chain	Bond lengths		Bond angles	
		RMSZ	$\# Z > 5$	RMSZ	$\# Z > 5$
1	A	1.48	15/3309 (0.5%)	1.16	4/4478 (0.1%)

All (15) bond length outliers are listed below:

Mol	Chain	Res	Type	Atoms	Z	Observed(Å)	Ideal(Å)
1	A	208	ILE	CG1-CD1	31.98	3.71	1.50
1	A	366	VAL	CB-CG2	-7.50	1.37	1.52
1	A	70	GLU	CG-CD	6.56	1.61	1.51
1	A	431	ARG	CB-CG	-5.67	1.37	1.52
1	A	405	PHE	CB-CG	-5.67	1.41	1.51
1	A	300	PHE	CE2-CZ	5.63	1.48	1.37
1	A	327	VAL	CB-CG1	5.61	1.64	1.52
1	A	81	GLU	CG-CD	5.59	1.60	1.51
1	A	219	ILE	CA-CB	-5.44	1.42	1.54
1	A	298	TYR	CZ-OH	-5.38	1.28	1.37
1	A	433	LEU	C-O	5.33	1.33	1.23
1	A	363	VAL	CB-CG2	-5.17	1.42	1.52
1	A	232	LYS	CE-NZ	5.03	1.61	1.49
1	A	264	THR	CB-CG2	-5.01	1.35	1.52
1	A	237	GLY	CA-C	5.00	1.59	1.51

All (4) bond angle outliers are listed below:

Mol	Chain	Res	Type	Atoms	Z	Observed(°)	Ideal(°)
1	A	208	ILE	CB-CG1-CD1	-28.10	35.23	113.90
1	A	93	ARG	NE-CZ-NH2	-9.05	115.78	120.30
1	A	3	LEU	CB-CG-CD1	5.93	121.08	111.00
1	A	85	ARG	NE-CZ-NH2	-5.49	117.56	120.30

There are no chirality outliers.

There are no planarity outliers.

5.2 Too-close contacts

In the following table, the Non-H and H(model) columns list the number of non-hydrogen atoms and hydrogen atoms in the chain respectively. The H(added) column lists the number of hydrogen atoms added and optimized by MolProbity. The Clashes column lists the number of clashes within the asymmetric unit, whereas Symm-Clashes lists symmetry related clashes.

Mol	Chain	Non-H	H(model)	H(added)	Clashes	Symm-Clashes
1	A	3252	0	3278	79	0
2	A	1	0	0	0	0
3	A	1	0	0	0	0
4	A	24	0	16	0	0
5	A	168	0	0	8	0
All	All	3446	0	3294	79	0

The all-atom clashscore is defined as the number of clashes found per 1000 atoms (including hydrogen atoms). The all-atom clashscore for this structure is 12.

All (79) close contacts within the same asymmetric unit are listed below, sorted by their clash magnitude.

Atom-1	Atom-2	Interatomic distance (Å)	Clash overlap (Å)
1:A:79:PHE:CE2	1:A:81:GLU:HB2	2.03	0.93
1:A:61:HIS:HE1	1:A:63:GLU:HG3	1.33	0.90
1:A:323:ARG:HG2	1:A:323:ARG:HH11	1.39	0.86
1:A:61:HIS:CE1	1:A:63:GLU:HG3	2.13	0.83
1:A:3:LEU:HD12	1:A:4:ASN:H	1.44	0.82
1:A:368:ASP:OD2	1:A:371:THR:HG23	1.83	0.77
1:A:208:ILE:H	1:A:208:ILE:HD13	1.51	0.76
1:A:3:LEU:HD13	1:A:41:ASP:OD2	1.86	0.75
1:A:3:LEU:HA	1:A:41:ASP:OD1	1.86	0.74
1:A:79:PHE:HE2	1:A:81:GLU:HB2	1.49	0.74
1:A:347:ARG:HH11	1:A:347:ARG:HG3	1.55	0.71
1:A:345:MET:HB2	1:A:351:ILE:HG21	1.74	0.69
1:A:368:ASP:HB2	5:A:585:HOH:O	1.93	0.68
1:A:345:MET:O	1:A:369:ARG:NH2	2.27	0.67
1:A:93:ARG:NH2	1:A:319:ASP:OD1	2.26	0.67
1:A:278:LEU:HG	1:A:279:PRO:CD	2.26	0.66
1:A:273:THR:N	5:A:557:HOH:O	2.30	0.64
1:A:292:ARG:HD2	1:A:296:LEU:HD22	1.78	0.64
1:A:347:ARG:HH11	1:A:347:ARG:CG	2.11	0.63

Continued on next page...

Continued from previous page...

Atom-1	Atom-2	Interatomic distance (Å)	Clash overlap (Å)
1:A:38:TYR:HA	1:A:43:ARG:O	2.02	0.59
1:A:155:LYS:HE2	5:A:454:HOH:O	2.00	0.59
1:A:323:ARG:NH1	1:A:324:ASP:OD1	2.35	0.59
1:A:368:ASP:CG	1:A:371:THR:HG23	2.23	0.58
1:A:278:LEU:HG	1:A:279:PRO:HD3	1.86	0.57
1:A:427:GLN:O	1:A:431:ARG:HG3	2.03	0.57
1:A:63:GLU:OE2	1:A:323:ARG:NH2	2.38	0.57
1:A:264:THR:HG21	5:A:517:HOH:O	2.05	0.56
1:A:378:LEU:O	1:A:382:ILE:HG13	2.06	0.56
1:A:251:ARG:NH1	5:A:556:HOH:O	2.26	0.55
1:A:387:MET:CE	1:A:387:MET:HA	2.37	0.54
1:A:347:ARG:HB2	1:A:347:ARG:NH1	2.23	0.54
1:A:208:ILE:H	1:A:208:ILE:CD1	2.21	0.53
1:A:3:LEU:CD1	1:A:4:ASN:H	2.19	0.52
1:A:256:PHE:H	1:A:259:GLN:NE2	2.07	0.52
1:A:171:PHE:CE1	1:A:173:TYR:HB3	2.46	0.51
1:A:269:THR:HG22	1:A:283:ILE:HG22	1.93	0.51
1:A:309:LEU:C	1:A:309:LEU:HD23	2.31	0.50
1:A:128:LYS:HD3	1:A:203:ASN:HA	1.92	0.50
1:A:307:ASP:O	1:A:310:PRO:HD2	2.12	0.49
1:A:291:GLU:O	1:A:295:GLU:HG3	2.13	0.49
1:A:208:ILE:O	1:A:208:ILE:HD13	2.13	0.49
1:A:85:ARG:HG3	5:A:481:HOH:O	2.13	0.49
1:A:138:TRP:HA	1:A:149:THR:HG23	1.94	0.48
1:A:226:MET:CE	1:A:226:MET:HA	2.44	0.48
1:A:5:ASP:O	1:A:6:ASP:C	2.52	0.48
1:A:132:VAL:O	1:A:208:ILE:HD13	2.13	0.47
1:A:246:GLN:HG2	1:A:272:LYS:HD2	1.96	0.47
1:A:367:LYS:HB2	1:A:373:GLU:O	2.14	0.47
1:A:213:LEU:HB2	1:A:219:ILE:HB	1.96	0.47
1:A:375:ALA:N	5:A:572:HOH:O	2.46	0.47
1:A:345:MET:HB2	1:A:351:ILE:CG2	2.43	0.47
1:A:309:LEU:HB3	1:A:310:PRO:HD3	1.97	0.47
1:A:124:LEU:HD22	1:A:298:TYR:HA	1.98	0.46
1:A:255:MET:HB3	1:A:259:GLN:HE22	1.79	0.46
1:A:61:HIS:CG	1:A:62:PRO:HD2	2.51	0.46
1:A:251:ARG:NE	5:A:555:HOH:O	2.27	0.45
1:A:208:ILE:HD13	1:A:208:ILE:N	2.20	0.45
1:A:57:LEU:HD23	1:A:57:LEU:N	2.27	0.45
1:A:382:ILE:HD13	1:A:429:ILE:HG12	1.97	0.45
1:A:208:ILE:CD1	1:A:208:ILE:N	2.78	0.45

Continued on next page...

Continued from previous page...

Atom-1	Atom-2	Interatomic distance (Å)	Clash overlap (Å)
1:A:398:LEU:HB3	1:A:399:PRO:HD2	1.98	0.44
1:A:255:MET:HG3	1:A:256:PHE:CE2	2.53	0.44
1:A:278:LEU:HG	1:A:279:PRO:HD2	1.97	0.44
1:A:323:ARG:CG	1:A:323:ARG:HH11	2.21	0.43
1:A:329:ARG:HH11	1:A:329:ARG:HG3	1.84	0.43
1:A:85:ARG:N	1:A:86:PRO:CD	2.82	0.43
1:A:226:MET:HE2	1:A:226:MET:HA	2.01	0.43
1:A:347:ARG:CG	1:A:347:ARG:NH1	2.77	0.42
1:A:387:MET:HE3	1:A:387:MET:HA	2.01	0.42
1:A:337:LEU:O	1:A:341:LEU:HG	2.19	0.42
1:A:3:LEU:HD12	1:A:4:ASN:N	2.25	0.42
1:A:368:ASP:OD1	1:A:371:THR:HG23	2.19	0.42
1:A:323:ARG:NH1	1:A:323:ARG:HG2	2.17	0.41
1:A:398:LEU:CD2	1:A:398:LEU:N	2.82	0.41
1:A:389:LEU:HA	1:A:389:LEU:HD23	1.68	0.41
1:A:367:LYS:HE2	1:A:367:LYS:HB3	1.67	0.41
1:A:171:PHE:CZ	1:A:173:TYR:HB3	2.55	0.41
1:A:258:CYS:HB2	1:A:263:VAL:O	2.21	0.41
1:A:359:LEU:HD12	1:A:359:LEU:HA	1.97	0.40

There are no symmetry-related clashes.

5.3 Torsion angles

5.3.1 Protein backbone

In the following table, the Percentiles column shows the percent Ramachandran outliers of the chain as a percentile score with respect to all X-ray entries followed by that with respect to entries of similar resolution.

The Analysed column shows the number of residues for which the backbone conformation was analysed, and the total number of residues.

Mol	Chain	Analysed	Favoured	Allowed	Outliers	Percentiles
1	A	429/433 (99%)	410 (96%)	16 (4%)	3 (1%)	25 37

All (3) Ramachandran outliers are listed below:

Mol	Chain	Res	Type
1	A	143	GLY
1	A	6	ASP

Continued on next page...

Continued from previous page...

Mol	Chain	Res	Type
1	A	271	SER

5.3.2 Protein sidechains ⓘ

In the following table, the Percentiles column shows the percent sidechain outliers of the chain as a percentile score with respect to all X-ray entries followed by that with respect to entries of similar resolution.

The Analysed column shows the number of residues for which the sidechain conformation was analysed, and the total number of residues.

Mol	Chain	Analysed	Rotameric	Outliers	Percentiles
1	A	334/336 (99%)	298 (89%)	36 (11%)	7 10

All (36) residues with a non-rotameric sidechain are listed below:

Mol	Chain	Res	Type
1	A	3	LEU
1	A	48	PHE
1	A	66	SER
1	A	74	LYS
1	A	75	LEU
1	A	97	ILE
1	A	104	ARG
1	A	136	GLN
1	A	178	GLU
1	A	179	ARG
1	A	186	LEU
1	A	189	LEU
1	A	208	ILE
1	A	223	ASP
1	A	226	MET
1	A	260	ARG
1	A	264	THR
1	A	278	LEU
1	A	292	ARG
1	A	296	LEU
1	A	337	LEU
1	A	344	LEU
1	A	347	ARG
1	A	349	ASP
1	A	354	VAL

Continued on next page...

Continued from previous page...

Mol	Chain	Res	Type
1	A	359	LEU
1	A	361	LEU
1	A	367	LYS
1	A	384	ARG
1	A	387	MET
1	A	398	LEU
1	A	418	ILE
1	A	422	LEU
1	A	423	SER
1	A	425	LEU
1	A	430	GLU

Some sidechains can be flipped to improve hydrogen bonding and reduce clashes. All (1) such sidechains are listed below:

Mol	Chain	Res	Type
1	A	259	GLN

5.3.3 RNA [i](#)

There are no RNA molecules in this entry.

5.4 Non-standard residues in protein, DNA, RNA chains [i](#)

There are no non-standard protein/DNA/RNA residues in this entry.

5.5 Carbohydrates [i](#)

There are no carbohydrates in this entry.

5.6 Ligand geometry [i](#)

Of 3 ligands modelled in this entry, 2 are monoatomic - leaving 1 for Mogul analysis.

In the following table, the Counts columns list the number of bonds (or angles) for which Mogul statistics could be retrieved, the number of bonds (or angles) that are observed in the model and the number of bonds (or angles) that are defined in the chemical component dictionary. The Link column lists molecule types, if any, to which the group is linked. The Z score for a bond length (or angle) is the number of standard deviations the observed value is removed from the expected value. A bond length (or angle) with $|Z| > 2$ is considered an outlier worth inspection. RMSZ is the root-mean-square of all Z scores of the bond lengths (or angles).

Mol	Type	Chain	Res	Link	Bond lengths			Bond angles		
					Counts	RMSZ	# Z > 2	Counts	RMSZ	# Z > 2
4	MPM	A	434	-	21,24,24	2.24	10 (47%)	26,37,37	2.41	7 (26%)

In the following table, the Chirals column lists the number of chiral outliers, the number of chiral centers analysed, the number of these observed in the model and the number defined in the chemical component dictionary. Similar counts are reported in the Torsion and Rings columns. '-' means no outliers of that kind were identified.

Mol	Type	Chain	Res	Link	Chirals	Torsions	Rings
4	MPM	A	434	-	-	0/11/24/24	0/1/1/1

All (10) bond length outliers are listed below:

Mol	Chain	Res	Type	Atoms	Z	Observed(Å)	Ideal(Å)
4	A	434	MPM	P2-O6	-3.74	1.47	1.54
4	A	434	MPM	P2-O8	-3.40	1.48	1.54
4	A	434	MPM	C5A-C5	-2.95	1.42	1.50
4	A	434	MPM	P1-O4	-2.76	1.43	1.54
4	A	434	MPM	P1-O2	-2.42	1.52	1.60
4	A	434	MPM	P1-O5	-2.33	1.45	1.54
4	A	434	MPM	O2-C5A	-2.10	1.36	1.44
4	A	434	MPM	C4-C5	2.58	1.45	1.42
4	A	434	MPM	C3-C2	3.01	1.42	1.40
4	A	434	MPM	C4-C4A	4.63	1.54	1.46

All (7) bond angle outliers are listed below:

Mol	Chain	Res	Type	Atoms	Z	Observed(°)	Ideal(°)
4	A	434	MPM	C5-C6-N1	-2.86	119.03	123.87
4	A	434	MPM	C5A-C5-C4	-2.72	116.90	121.66
4	A	434	MPM	C4-C3-C2	-2.49	118.63	120.15
4	A	434	MPM	C4-C4A-N2	-2.17	114.38	124.53
4	A	434	MPM	C6-N1-C2	2.13	123.36	119.26
4	A	434	MPM	C-N2-C4A	5.65	126.41	119.44
4	A	434	MPM	O2-C5A-C5	7.89	125.19	109.32

There are no chirality outliers.

There are no torsion outliers.

There are no ring outliers.

No monomer is involved in short contacts.

5.7 Other polymers [i](#)

There are no such residues in this entry.

5.8 Polymer linkage issues [i](#)

There are no chain breaks in this entry.

6 Fit of model and data

6.1 Protein, DNA and RNA chains

EDS was not executed - this section is therefore empty.

6.2 Non-standard residues in protein, DNA, RNA chains

EDS was not executed - this section is therefore empty.

6.3 Carbohydrates

EDS was not executed - this section is therefore empty.

6.4 Ligands

EDS was not executed - this section is therefore empty.

6.5 Other polymers

EDS was not executed - this section is therefore empty.