



# Full wwPDB X-ray Structure Validation Report ⓘ

Feb 15, 2017 – 01:50 am GMT

PDB ID : 3M0Y  
Title : Crystal structure of Pseudomonas stutzeri L-rhamnose isomerase mutant S329A in complex with L-rhamnose  
Authors : Yoshida, H.; Takeda, K.; Izumori, K.; Kamitori, S.  
Deposited on : 2010-03-03  
Resolution : 1.96 Å(reported)

This is a Full wwPDB X-ray Structure Validation Report for a publicly released PDB entry.

We welcome your comments at [validation@mail.wwpdb.org](mailto:validation@mail.wwpdb.org)

A user guide is available at

<http://wwpdb.org/validation/2016/XrayValidationReportHelp>

with specific help available everywhere you see the ⓘ symbol.

---

The following versions of software and data (see [references ⓘ](#)) were used in the production of this report:

MolProbity : 4.02b-467  
Mogul : 1.7.2 (RC1), CSD as538be (2017)  
Xtriage (Phenix) : 1.9-1692  
EDS : trunk28620  
Percentile statistics : 20161228.v01 (using entries in the PDB archive December 28th 2016)  
Refmac : 5.8.0135  
CCP4 : 6.5.0  
Ideal geometry (proteins) : Engh & Huber (2001)  
Ideal geometry (DNA, RNA) : Parkinson et al. (1996)  
Validation Pipeline (wwPDB-VP) : recalc28949

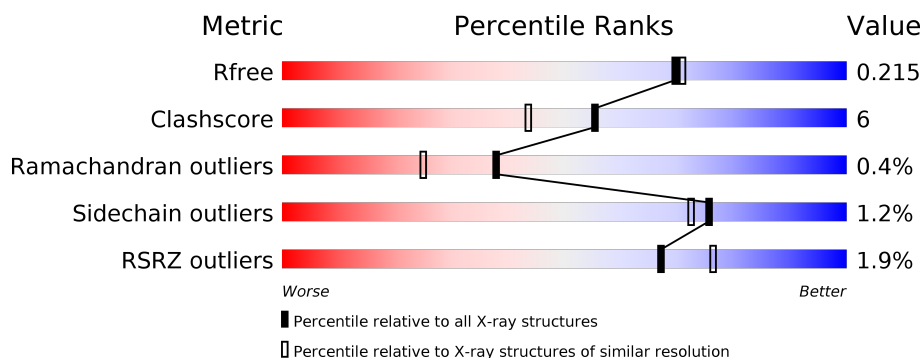
# 1 Overall quality at a glance

The following experimental techniques were used to determine the structure:

*X-RAY DIFFRACTION*

The reported resolution of this entry is 1.96 Å.

Percentile scores (ranging between 0-100) for global validation metrics of the entry are shown in the following graphic. The table shows the number of entries on which the scores are based.



Metric	Whole archive (#Entries)	Similar resolution (#Entries, resolution range(Å))
$R_{free}$	100719	2004 (1.96-1.96)
Clashscore	112137	2136 (1.96-1.96)
Ramachandran outliers	110173	2117 (1.96-1.96)
Sidechain outliers	110143	2117 (1.96-1.96)
RSRZ outliers	101464	2018 (1.96-1.96)

The table below summarises the geometric issues observed across the polymeric chains and their fit to the electron density. The red, orange, yellow and green segments on the lower bar indicate the fraction of residues that contain outliers for  $\geq 3$ , 2, 1 and 0 types of geometric quality criteria. A grey segment represents the fraction of residues that are not modelled. The numeric value for each fraction is indicated below the corresponding segment, with a dot representing fractions  $\leq 5\%$ . The upper red bar (where present) indicates the fraction of residues that have poor fit to the electron density. The numeric value is given above the bar.

Mol	Chain	Length	Quality of chain
1	A	438	<div> <div>84%</div> <div>12%</div> <div>•</div> </div>
1	B	438	<div> <div>83%</div> <div>13%</div> <div>•</div> </div>
1	C	438	<div> <div>82%</div> <div>15%</div> <div>•</div> </div>
1	D	438	<div> <div>82%</div> <div>13%</div> <div>•</div> </div>

The following table lists non-polymeric compounds, carbohydrate monomers and non-standard residues in protein, DNA, RNA chains that are outliers for geometric or electron-density-fit crite-

ria:

Mol	Type	Chain	Res	Chirality	Geometry	Clashes	Electron density
3	RNS	A	2001	-	-	-	X

## 2 Entry composition

There are 4 unique types of molecules in this entry. The entry contains 14508 atoms, of which 0 are hydrogens and 0 are deuteriums.

In the tables below, the ZeroOcc column contains the number of atoms modelled with zero occupancy, the AltConf column contains the number of residues with at least one atom in alternate conformation and the Trace column contains the number of residues modelled with at most 2 atoms.

- Molecule 1 is a protein called L-rhamnose isomerase.

Mol	Chain	Residues	Atoms					ZeroOcc	AltConf	Trace
1	A	421	Total	C	N	O	S	0	0	0
			3259	2048	584	618	9			
1	B	421	Total	C	N	O	S	0	0	0
			3259	2048	584	618	9			
1	C	428	Total	C	N	O	S	0	0	0
			3300	2073	591	627	9			
1	D	419	Total	C	N	O	S	0	0	0
			3250	2042	582	617	9			

There are 40 discrepancies between the modelled and reference sequences:

Chain	Residue	Modelled	Actual	Comment	Reference
A	150	ASN	ASP	ENGINEERED	UNP Q75WH8
A	329	ALA	SER	ENGINEERED	UNP Q75WH8
A	431	GLY	-	EXPRESSION TAG	UNP Q75WH8
A	432	SER	-	EXPRESSION TAG	UNP Q75WH8
A	433	HIS	-	EXPRESSION TAG	UNP Q75WH8
A	434	HIS	-	EXPRESSION TAG	UNP Q75WH8
A	435	HIS	-	EXPRESSION TAG	UNP Q75WH8
A	436	HIS	-	EXPRESSION TAG	UNP Q75WH8
A	437	HIS	-	EXPRESSION TAG	UNP Q75WH8
A	438	HIS	-	EXPRESSION TAG	UNP Q75WH8
B	150	ASN	ASP	ENGINEERED	UNP Q75WH8
B	329	ALA	SER	ENGINEERED	UNP Q75WH8
B	431	GLY	-	EXPRESSION TAG	UNP Q75WH8
B	432	SER	-	EXPRESSION TAG	UNP Q75WH8
B	433	HIS	-	EXPRESSION TAG	UNP Q75WH8
B	434	HIS	-	EXPRESSION TAG	UNP Q75WH8
B	435	HIS	-	EXPRESSION TAG	UNP Q75WH8
B	436	HIS	-	EXPRESSION TAG	UNP Q75WH8
B	437	HIS	-	EXPRESSION TAG	UNP Q75WH8
B	438	HIS	-	EXPRESSION TAG	UNP Q75WH8
C	150	ASN	ASP	ENGINEERED	UNP Q75WH8

*Continued on next page...*

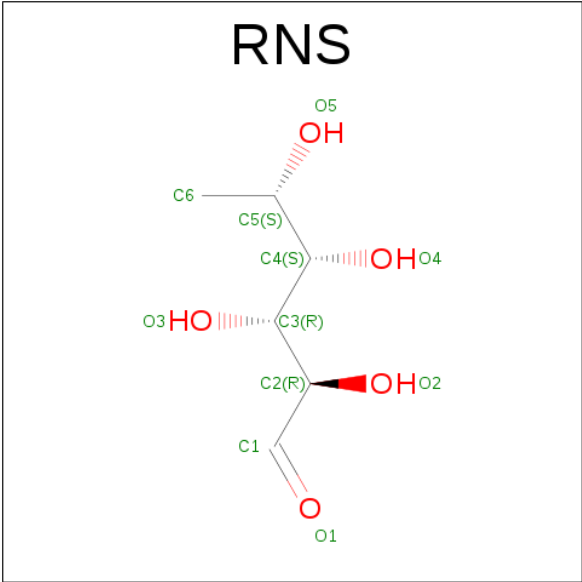
*Continued from previous page...*

Chain	Residue	Modelled	Actual	Comment	Reference
C	329	ALA	SER	ENGINEERED	UNP Q75WH8
C	431	GLY	-	EXPRESSION TAG	UNP Q75WH8
C	432	SER	-	EXPRESSION TAG	UNP Q75WH8
C	433	HIS	-	EXPRESSION TAG	UNP Q75WH8
C	434	HIS	-	EXPRESSION TAG	UNP Q75WH8
C	435	HIS	-	EXPRESSION TAG	UNP Q75WH8
C	436	HIS	-	EXPRESSION TAG	UNP Q75WH8
C	437	HIS	-	EXPRESSION TAG	UNP Q75WH8
C	438	HIS	-	EXPRESSION TAG	UNP Q75WH8
D	150	ASN	ASP	ENGINEERED	UNP Q75WH8
D	329	ALA	SER	ENGINEERED	UNP Q75WH8
D	431	GLY	-	EXPRESSION TAG	UNP Q75WH8
D	432	SER	-	EXPRESSION TAG	UNP Q75WH8
D	433	HIS	-	EXPRESSION TAG	UNP Q75WH8
D	434	HIS	-	EXPRESSION TAG	UNP Q75WH8
D	435	HIS	-	EXPRESSION TAG	UNP Q75WH8
D	436	HIS	-	EXPRESSION TAG	UNP Q75WH8
D	437	HIS	-	EXPRESSION TAG	UNP Q75WH8
D	438	HIS	-	EXPRESSION TAG	UNP Q75WH8

- Molecule 2 is MANGANESE (II) ION (three-letter code: MN) (formula: Mn).

Mol	Chain	Residues	Atoms	ZeroOcc	AltConf
2	B	2	Total Mn 2 2	0	0
2	A	2	Total Mn 2 2	0	0
2	D	2	Total Mn 2 2	0	0
2	C	2	Total Mn 2 2	0	0

- Molecule 3 is SUGAR (L-RHAMNOSE) (three-letter code: RNS) (formula: C<sub>6</sub>H<sub>12</sub>O<sub>5</sub>).



Mol	Chain	Residues	Atoms			ZeroOcc	AltConf
3	A	1	Total	C	O	0	0
			11	6	5		
3	B	1	Total	C	O	0	0
			11	6	5		
3	C	1	Total	C	O	0	0
			11	6	5		
3	D	1	Total	C	O	0	0
			11	6	5		

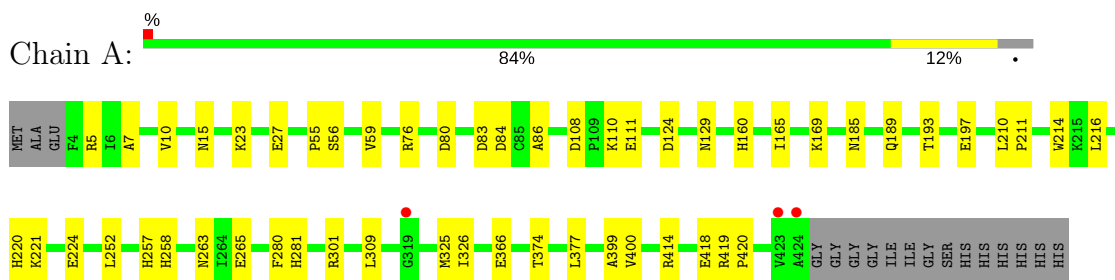
- Molecule 4 is water.

Mol	Chain	Residues	Atoms		ZeroOcc	AltConf
4	A	382	Total	O	0	0
			382	382		
4	B	348	Total	O	0	0
			348	348		
4	C	310	Total	O	0	0
			310	310		
4	D	348	Total	O	0	0
			348	348		

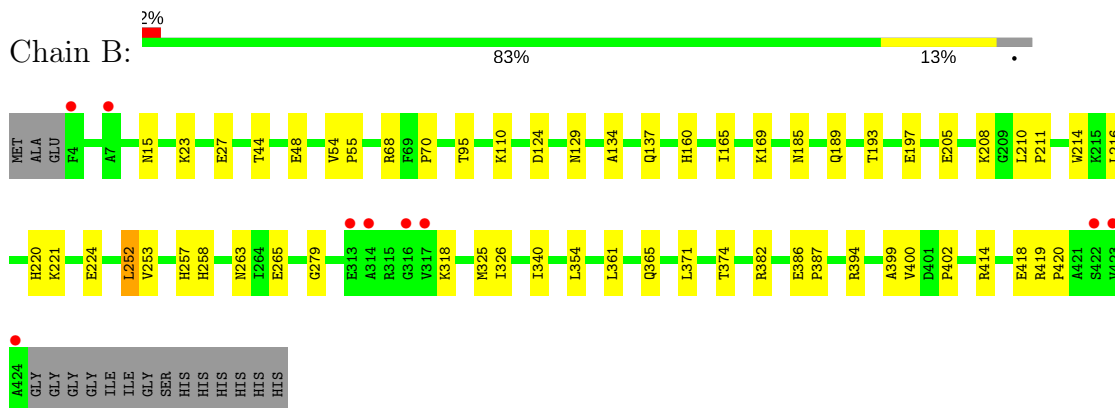
### 3 Residue-property plots [i](#)

These plots are drawn for all protein, RNA and DNA chains in the entry. The first graphic for a chain summarises the proportions of the various outlier classes displayed in the second graphic. The second graphic shows the sequence view annotated by issues in geometry and electron density. Residues are color-coded according to the number of geometric quality criteria for which they contain at least one outlier: green = 0, yellow = 1, orange = 2 and red = 3 or more. A red dot above a residue indicates a poor fit to the electron density ( $RSRZ > 2$ ). Stretches of 2 or more consecutive residues without any outlier are shown as a green connector. Residues present in the sample, but not in the model, are shown in grey.

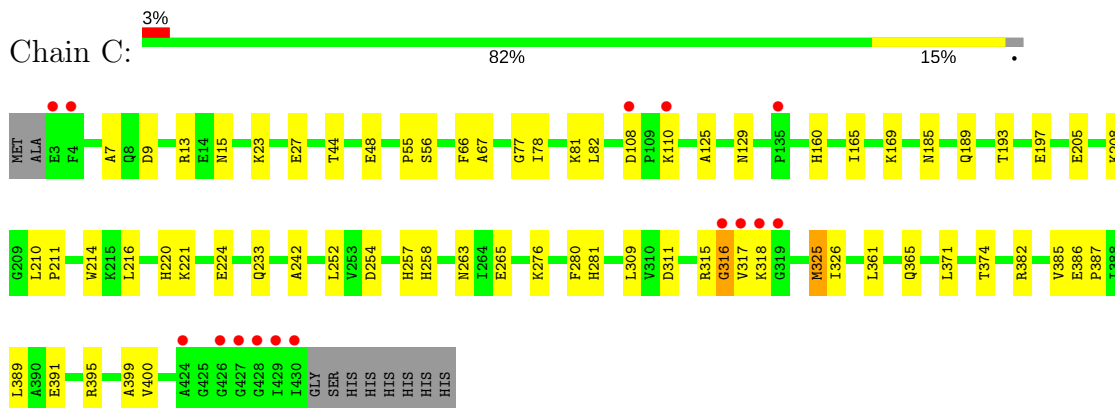
- Molecule 1: L-rhamnose isomerase



- Molecule 1: L-rhamnose isomerase



- Molecule 1: L-rhamnose isomerase



- Molecule 1: L-rhamnose isomerase





## 4 Data and refinement statistics

Property	Value	Source
Space group	P 1 21 1	Depositor
Cell constants a, b, c, $\alpha$ , $\beta$ , $\gamma$	74.72Å 104.94Å 114.99Å 90.00° 108.06° 90.00°	Depositor
Resolution (Å)	42.21 – 1.96 42.21 – 1.96	Depositor EDS
% Data completeness (in resolution range)	91.1 (42.21-1.96) 91.2 (42.21-1.96)	Depositor EDS
$R_{merge}$	0.09	Depositor
$R_{sym}$	(Not available)	Depositor
$\langle I/\sigma(I) \rangle$ <sup>1</sup>	2.76 (at 1.97Å)	Xtriage
Refinement program	CNS 1.1	Depositor
R, $R_{free}$	0.183 , 0.216 0.182 , 0.215	Depositor DCC
$R_{free}$ test set	11025 reflections (10.00%)	DCC
Wilson B-factor (Å <sup>2</sup> )	19.0	Xtriage
Anisotropy	0.286	Xtriage
Bulk solvent $k_{sol}$ (e/Å <sup>3</sup> ), $B_{sol}$ (Å <sup>2</sup> )	0.35 , 50.8	EDS
L-test for twinning <sup>2</sup>	$\langle  L  \rangle = 0.49$ , $\langle L^2 \rangle = 0.32$	Xtriage
Estimated twinning fraction	0.019 for h,-k,-h-l	Xtriage
$F_o, F_c$ correlation	0.95	EDS
Total number of atoms	14508	wwPDB-VP
Average B, all atoms (Å <sup>2</sup> )	22.0	wwPDB-VP

Xtriage's analysis on translational NCS is as follows: *The largest off-origin peak in the Patterson function is 3.81% of the height of the origin peak. No significant pseudotranslation is detected.*

<sup>1</sup>Intensities estimated from amplitudes.

<sup>2</sup>Theoretical values of  $\langle |L| \rangle$ ,  $\langle L^2 \rangle$  for acentric reflections are 0.5, 0.333 respectively for untwinned datasets, and 0.375, 0.2 for perfectly twinned datasets.

## 5 Model quality [i](#)

### 5.1 Standard geometry [i](#)

Bond lengths and bond angles in the following residue types are not validated in this section: RNS, MN

The Z score for a bond length (or angle) is the number of standard deviations the observed value is removed from the expected value. A bond length (or angle) with  $|Z| > 5$  is considered an outlier worth inspection. RMSZ is the root-mean-square of all Z scores of the bond lengths (or angles).

Mol	Chain	Bond lengths		Bond angles	
		RMSZ	# Z  >5	RMSZ	# Z  >5
1	A	0.32	0/3331	0.54	0/4517
1	B	0.31	0/3331	0.54	0/4517
1	C	0.30	0/3372	0.52	0/4571
1	D	0.31	0/3322	0.53	0/4504
All	All	0.31	0/13356	0.53	0/18109

There are no bond length outliers.

There are no bond angle outliers.

There are no chirality outliers.

There are no planarity outliers.

### 5.2 Too-close contacts [i](#)

In the following table, the Non-H and H(model) columns list the number of non-hydrogen atoms and hydrogen atoms in the chain respectively. The H(added) column lists the number of hydrogen atoms added and optimized by MolProbity. The Clashes column lists the number of clashes within the asymmetric unit, whereas Symm-Clashes lists symmetry related clashes.

Mol	Chain	Non-H	H(model)	H(added)	Clashes	Symm-Clashes
1	A	3259	0	3165	35	0
1	B	3259	0	3165	35	0
1	C	3300	0	3205	43	0
1	D	3250	0	3152	39	0
2	A	2	0	0	0	0
2	B	2	0	0	0	0
2	C	2	0	0	0	0
2	D	2	0	0	0	0
3	A	11	0	11	0	0

*Continued on next page...*

*Continued from previous page...*

Mol	Chain	Non-H	H(model)	H(added)	Clashes	Symm-Clashes
3	B	11	0	11	0	0
3	C	11	0	11	0	0
3	D	11	0	11	0	0
4	A	382	0	0	3	0
4	B	348	0	0	2	0
4	C	310	0	0	1	0
4	D	348	0	0	2	0
All	All	14508	0	12731	152	0

The all-atom clashscore is defined as the number of clashes found per 1000 atoms (including hydrogen atoms). The all-atom clashscore for this structure is 6.

All (152) close contacts within the same asymmetric unit are listed below, sorted by their clash magnitude.

Atom-1	Atom-2	Interatomic distance (Å)	Clash overlap (Å)
1:A:129:ASN:H	1:A:160:HIS:HE1	1.12	0.91
1:B:129:ASN:H	1:B:160:HIS:HE1	1.21	0.85
1:A:129:ASN:H	1:A:160:HIS:CE1	1.98	0.82
1:B:129:ASN:H	1:B:160:HIS:CE1	2.04	0.76
1:D:129:ASN:H	1:D:160:HIS:HE1	1.33	0.75
1:C:129:ASN:H	1:C:160:HIS:HE1	1.33	0.75
1:D:129:ASN:H	1:D:160:HIS:CE1	2.06	0.73
1:C:129:ASN:H	1:C:160:HIS:CE1	2.06	0.73
1:D:220:HIS:HE2	1:D:258:HIS:CE1	2.06	0.72
1:A:220:HIS:HE2	1:A:258:HIS:CE1	2.10	0.70
1:C:205:GLU:HA	1:C:208:LYS:HE2	1.74	0.70
1:B:220:HIS:HE2	1:B:258:HIS:CE1	2.10	0.69
1:D:23:LYS:O	1:D:27:GLU:HG3	1.94	0.68
1:C:220:HIS:HE2	1:C:258:HIS:CE1	2.13	0.67
1:B:23:LYS:O	1:B:27:GLU:HG3	1.96	0.66
1:A:220:HIS:HE2	1:A:258:HIS:HE1	1.43	0.66
1:B:205:GLU:HA	1:B:208:LYS:HE2	1.78	0.65
1:A:210:LEU:HD11	1:A:216:LEU:HB2	1.79	0.65
1:A:185:ASN:H	1:A:189:GLN:HE22	1.44	0.65
1:D:108:ASP:OD2	1:D:111:GLU:HG3	1.97	0.65
1:C:220:HIS:HE2	1:C:258:HIS:HE1	1.45	0.65
4:A:559:HOH:O	1:D:382:ARG:HD3	1.97	0.64
1:C:44:THR:O	1:C:48:GLU:HG3	1.97	0.64
1:A:56:SER:O	1:A:59:VAL:HG12	1.98	0.64
1:A:15:ASN:ND2	1:A:400:VAL:H	1.96	0.63
1:B:165:ILE:O	1:B:169:LYS:HG3	1.99	0.63

*Continued on next page...*

*Continued from previous page...*

Atom-1	Atom-2	Interatomic distance (Å)	Clash overlap (Å)
1:A:185:ASN:H	1:A:189:GLN:NE2	1.95	0.63
1:B:414:ARG:O	1:B:418:GLU:HG3	1.98	0.63
1:B:252:LEU:HD12	1:B:253:VAL:N	2.13	0.63
1:B:220:HIS:HE2	1:B:258:HIS:HE1	1.45	0.63
1:B:15:ASN:ND2	1:B:400:VAL:H	1.97	0.62
1:C:210:LEU:HD11	1:C:216:LEU:HB2	1.82	0.62
1:C:391:GLU:O	1:C:395:ARG:HG3	2.00	0.61
1:A:76:ARG:HD3	1:A:80:ASP:OD2	1.99	0.61
1:A:59:VAL:HG21	1:A:84:ASP:HB2	1.82	0.61
1:C:185:ASN:H	1:C:189:GLN:HE22	1.48	0.61
1:D:185:ASN:H	1:D:189:GLN:HE22	1.48	0.60
1:C:23:LYS:O	1:C:27:GLU:HG3	2.01	0.60
1:D:76:ARG:HD3	1:D:420:PRO:CD	2.32	0.60
1:B:210:LEU:HD11	1:B:216:LEU:HB2	1.83	0.60
1:D:185:ASN:H	1:D:189:GLN:NE2	2.00	0.60
1:A:23:LYS:O	1:A:27:GLU:HG3	2.02	0.59
1:C:7:ALA:HB1	1:C:9:ASP:OD1	2.02	0.59
1:C:48:GLU:CD	1:C:395:ARG:HH21	2.05	0.58
1:D:220:HIS:HE2	1:D:258:HIS:HE1	1.51	0.58
1:A:5:ARG:HD2	1:A:83:ASP:O	2.04	0.57
1:C:361:LEU:O	1:C:365:GLN:HG3	2.05	0.57
1:A:193:THR:O	1:A:197:GLU:HG3	2.05	0.56
1:D:320:PHE:CE1	1:D:322:PRO:HG3	2.40	0.56
1:C:280:PHE:CE2	1:C:309:LEU:HD21	2.41	0.56
1:B:68:ARG:HH12	1:B:70:PRO:HB3	1.71	0.56
1:C:15:ASN:ND2	1:C:400:VAL:H	2.04	0.55
1:B:263:ASN:OD1	1:B:265:GLU:HG2	2.06	0.55
1:A:108:ASP:HB3	1:A:111:GLU:HG3	1.88	0.55
1:D:66:PHE:O	1:D:67:ALA:HB2	2.08	0.54
1:C:185:ASN:H	1:C:189:GLN:NE2	2.05	0.54
1:D:165:ILE:O	1:D:169:LYS:HG3	2.08	0.54
1:A:15:ASN:HD21	1:A:399:ALA:HA	1.73	0.53
1:B:15:ASN:HD21	1:B:400:VAL:H	1.53	0.53
1:C:15:ASN:HD21	1:C:399:ALA:HA	1.73	0.53
1:A:15:ASN:HD21	1:A:400:VAL:H	1.54	0.53
1:A:165:ILE:O	1:A:169:LYS:HG3	2.09	0.53
1:A:221:LYS:HA	1:A:257:HIS:HB3	1.90	0.53
1:B:382:ARG:HD3	4:C:1001:HOH:O	2.09	0.53
1:D:414:ARG:O	1:D:418:GLU:HG3	2.10	0.52
1:B:185:ASN:H	1:B:189:GLN:HE22	1.56	0.52
1:C:165:ILE:O	1:C:169:LYS:HG3	2.10	0.52

*Continued on next page...*

*Continued from previous page...*

Atom-1	Atom-2	Interatomic distance (Å)	Clash overlap (Å)
1:C:385:VAL:O	1:C:389:LEU:HD13	2.10	0.52
1:C:193:THR:O	1:C:197:GLU:HG3	2.10	0.51
1:B:54:VAL:HG23	1:B:95:THR:HB	1.93	0.51
1:B:221:LYS:HA	1:B:257:HIS:HB3	1.92	0.50
1:B:15:ASN:HD21	1:B:399:ALA:HA	1.76	0.50
1:A:211:PRO:HD2	1:A:214:TRP:CG	2.46	0.50
1:D:15:ASN:ND2	1:D:400:VAL:H	2.10	0.50
1:B:211:PRO:HD2	1:B:214:TRP:CG	2.46	0.50
1:C:252:LEU:HD21	1:C:281:HIS:CG	2.48	0.49
1:D:193:THR:O	1:D:197:GLU:HG3	2.13	0.49
1:D:221:LYS:HE2	1:D:223:TYR:O	2.12	0.49
1:D:221:LYS:HA	1:D:257:HIS:HB3	1.93	0.49
1:B:185:ASN:H	1:B:189:GLN:NE2	2.11	0.49
1:C:263:ASN:OD1	1:C:265:GLU:HG2	2.13	0.49
1:B:68:ARG:NH1	1:B:70:PRO:HB3	2.28	0.48
1:C:56:SER:O	1:C:81:LYS:HD3	2.13	0.48
1:D:76:ARG:HD3	1:D:420:PRO:HD3	1.95	0.48
1:B:44:THR:O	1:B:48:GLU:HG2	2.13	0.48
1:A:108:ASP:OD2	1:A:110:LYS:HB2	2.14	0.48
1:D:325:MET:HE2	4:D:537:HOH:O	2.12	0.48
1:D:108:ASP:OD2	1:D:110:LYS:HB2	2.13	0.48
1:D:76:ARG:HD3	1:D:420:PRO:HD2	1.96	0.47
1:B:110:LYS:HG3	4:B:1385:HOH:O	2.13	0.47
1:B:134:ALA:O	1:B:137:GLN:HB2	2.15	0.47
1:C:108:ASP:OD2	1:C:110:LYS:HB2	2.15	0.47
1:A:76:ARG:HD2	1:A:420:PRO:HD2	1.97	0.47
1:D:68:ARG:NH2	1:D:70:PRO:HB3	2.30	0.47
1:D:15:ASN:HD21	1:D:399:ALA:HA	1.80	0.47
1:A:129:ASN:N	1:A:160:HIS:HE1	1.95	0.47
1:D:13:ARG:HG3	1:D:13:ARG:HH21	1.81	0.47
1:C:125:ALA:HB3	1:C:325:MET:HE3	1.97	0.46
1:D:361:LEU:O	1:D:365:GLN:HG3	2.14	0.46
1:A:263:ASN:OD1	1:A:265:GLU:HG2	2.16	0.46
1:D:311:ASP:O	1:D:315:ARG:HG3	2.15	0.46
1:D:68:ARG:HH22	1:D:70:PRO:HB3	1.81	0.46
1:B:193:THR:O	1:B:197:GLU:HG3	2.16	0.46
4:B:547:HOH:O	1:C:382:ARG:HD3	2.15	0.46
1:D:263:ASN:OD1	1:D:265:GLU:HG2	2.16	0.46
1:A:108:ASP:OD2	1:A:111:GLU:HG3	2.16	0.45
1:D:375:GLU:O	1:D:379:ARG:HG3	2.17	0.45
1:B:419:ARG:HA	1:B:420:PRO:HD3	1.86	0.45

*Continued on next page...*

*Continued from previous page...*

Atom-1	Atom-2	Interatomic distance (Å)	Clash overlap (Å)
1:C:15:ASN:HD21	1:C:400:VAL:H	1.65	0.45
1:C:211:PRO:HD2	1:C:214:TRP:CG	2.51	0.45
1:C:311:ASP:O	1:C:315:ARG:HG2	2.17	0.45
1:C:316:GLY:O	1:C:318:LYS:N	2.51	0.44
1:C:221:LYS:HA	1:C:257:HIS:HB3	1.98	0.44
1:C:221:LYS:O	1:C:233:GLN:HA	2.18	0.44
1:C:280:PHE:HE2	1:C:309:LEU:HD21	1.83	0.44
1:B:252:LEU:HD13	1:B:279:GLY:C	2.38	0.44
1:B:55:PRO:HD3	1:B:326:ILE:O	2.18	0.44
1:B:252:LEU:HD12	1:B:252:LEU:C	2.37	0.44
1:A:23:LYS:NZ	1:A:27:GLU:OE2	2.45	0.43
1:C:66:PHE:O	1:C:67:ALA:HB2	2.17	0.43
1:D:59:VAL:HG21	1:D:85:CYS:SG	2.58	0.43
1:A:252:LEU:HD21	1:A:281:HIS:CG	2.53	0.43
1:C:242:ALA:HB1	1:C:276:LYS:HD2	1.99	0.43
1:A:301:ARG:HD3	4:A:530:HOH:O	2.17	0.43
1:C:13:ARG:HH11	1:C:13:ARG:HG3	1.84	0.43
1:D:150:ASN:HD21	1:D:152:ALA:HB3	1.84	0.43
1:C:55:PRO:HD3	1:C:326:ILE:O	2.20	0.42
1:A:280:PHE:CE2	1:A:309:LEU:HD21	2.55	0.42
1:B:340:ILE:HG21	1:B:402:PRO:HB2	2.01	0.42
1:D:252:LEU:HD21	1:D:281:HIS:CD2	2.54	0.42
1:A:7:ALA:HB3	1:A:10:VAL:HG23	2.00	0.42
1:A:366:GLU:HG2	4:A:974:HOH:O	2.19	0.42
1:B:361:LEU:O	1:B:365:GLN:HG3	2.19	0.42
1:A:76:ARG:HH11	1:A:419:ARG:HG2	1.84	0.41
1:C:386:GLU:N	1:C:387:PRO:CD	2.83	0.41
1:D:15:ASN:HD21	1:D:400:VAL:H	1.68	0.41
1:A:5:ARG:HG3	1:A:86:ALA:HB3	2.01	0.41
1:D:43:VAL:O	1:D:47:VAL:HG23	2.21	0.41
1:D:340:ILE:HG21	1:D:402:PRO:HB2	2.01	0.41
1:A:55:PRO:HD3	1:A:326:ILE:O	2.21	0.41
1:C:254:ASP:HA	1:C:281:HIS:HB2	2.03	0.41
1:A:414:ARG:O	1:A:418:GLU:HG3	2.20	0.41
1:B:386:GLU:N	1:B:387:PRO:CD	2.84	0.41
1:B:252:LEU:HD13	1:B:279:GLY:O	2.21	0.41
1:C:252:LEU:HD21	1:C:281:HIS:CD2	2.55	0.41
1:D:54:VAL:HG13	1:D:95:THR:HB	2.03	0.41
1:C:78:ILE:O	1:C:82:LEU:HG	2.22	0.40
1:D:366:GLU:HG2	4:D:1381:HOH:O	2.20	0.40
1:B:394:ARG:HG2	1:B:394:ARG:HH21	1.86	0.40

*Continued on next page...*

*Continued from previous page...*

Atom-1	Atom-2	Interatomic distance (Å)	Clash overlap (Å)
1:C:125:ALA:HB3	1:C:325:MET:CE	2.52	0.40
1:D:386:GLU:N	1:D:387:PRO:CD	2.84	0.40
1:C:77:GLY:O	1:C:81:LYS:HG3	2.22	0.40

There are no symmetry-related clashes.

## 5.3 Torsion angles [i](#)

### 5.3.1 Protein backbone [i](#)

In the following table, the Percentiles column shows the percent Ramachandran outliers of the chain as a percentile score with respect to all X-ray entries followed by that with respect to entries of similar resolution.

The Analysed column shows the number of residues for which the backbone conformation was analysed, and the total number of residues.

Mol	Chain	Analysed	Favoured	Allowed	Outliers	Percentiles	
1	A	419/438 (96%)	407 (97%)	11 (3%)	1 (0%)	51	41
1	B	419/438 (96%)	408 (97%)	10 (2%)	1 (0%)	51	41
1	C	426/438 (97%)	413 (97%)	10 (2%)	3 (1%)	25	13
1	D	417/438 (95%)	404 (97%)	11 (3%)	2 (0%)	32	19
All	All	1681/1752 (96%)	1632 (97%)	42 (2%)	7 (0%)	38	25

All (7) Ramachandran outliers are listed below:

Mol	Chain	Res	Type
1	C	317	VAL
1	A	224	GLU
1	B	224	GLU
1	C	224	GLU
1	D	224	GLU
1	C	316	GLY
1	D	420	PRO

### 5.3.2 Protein sidechains [i](#)

In the following table, the Percentiles column shows the percent sidechain outliers of the chain as a percentile score with respect to all X-ray entries followed by that with respect to entries of similar

resolution.

The Analysed column shows the number of residues for which the sidechain conformation was analysed, and the total number of residues.

Mol	Chain	Analysed	Rotameric	Outliers	Percentiles	
1	A	329/340 (97%)	325 (99%)	4 (1%)	75	72
1	B	329/340 (97%)	322 (98%)	7 (2%)	59	50
1	C	332/340 (98%)	329 (99%)	3 (1%)	82	81
1	D	328/340 (96%)	326 (99%)	2 (1%)	89	88
All	All	1318/1360 (97%)	1302 (99%)	16 (1%)	75	72

All (16) residues with a non-rotameric sidechain are listed below:

Mol	Chain	Res	Type
1	A	124	ASP
1	A	325	MET
1	A	374	THR
1	A	377	LEU
1	B	124	ASP
1	B	252	LEU
1	B	318	LYS
1	B	325	MET
1	B	354	LEU
1	B	371	LEU
1	B	374	THR
1	C	325	MET
1	C	371	LEU
1	C	374	THR
1	D	325	MET
1	D	374	THR

Some sidechains can be flipped to improve hydrogen bonding and reduce clashes. All (24) such sidechains are listed below:

Mol	Chain	Res	Type
1	A	8	GLN
1	A	15	ASN
1	A	160	HIS
1	A	189	GLN
1	A	258	HIS
1	A	344	ASN
1	B	8	GLN

*Continued on next page...*



*Continued from previous page...*

Mol	Chain	Res	Type
1	B	15	ASN
1	B	160	HIS
1	B	189	GLN
1	B	258	HIS
1	B	344	ASN
1	C	8	GLN
1	C	15	ASN
1	C	160	HIS
1	C	189	GLN
1	C	258	HIS
1	C	344	ASN
1	C	368	ASN
1	D	15	ASN
1	D	160	HIS
1	D	189	GLN
1	D	258	HIS
1	D	344	ASN

### 5.3.3 RNA [i](#)

There are no RNA molecules in this entry.

## 5.4 Non-standard residues in protein, DNA, RNA chains [i](#)

There are no non-standard protein/DNA/RNA residues in this entry.

## 5.5 Carbohydrates [i](#)

There are no carbohydrates in this entry.

## 5.6 Ligand geometry [i](#)

Of 12 ligands modelled in this entry, 8 are monoatomic - leaving 4 for Mogul analysis.

In the following table, the Counts columns list the number of bonds (or angles) for which Mogul statistics could be retrieved, the number of bonds (or angles) that are observed in the model and the number of bonds (or angles) that are defined in the chemical component dictionary. The Link column lists molecule types, if any, to which the group is linked. The Z score for a bond length (or angle) is the number of standard deviations the observed value is removed from the expected value. A bond length (or angle) with  $|Z| > 2$  is considered an outlier worth inspection. RMSZ is the root-mean-square of all Z scores of the bond lengths (or angles).

Mol	Type	Chain	Res	Link	Bond lengths			Bond angles		
					Counts	RMSZ	# Z  > 2	Counts	RMSZ	# Z  > 2
3	RNS	A	2001	2	9,10,10	0.66	0	10,13,13	0.99	0
3	RNS	B	2002	2	9,10,10	0.69	0	10,13,13	1.04	1 (10%)
3	RNS	C	2003	2	9,10,10	0.63	0	10,13,13	1.07	1 (10%)
3	RNS	D	2004	2	9,10,10	0.70	0	10,13,13	0.95	0

In the following table, the Chirals column lists the number of chiral outliers, the number of chiral centers analysed, the number of these observed in the model and the number defined in the chemical component dictionary. Similar counts are reported in the Torsion and Rings columns. '-' means no outliers of that kind were identified.

Mol	Type	Chain	Res	Link	Chirals	Torsions	Rings
3	RNS	A	2001	2	-	0/12/14/14	0/0/0/0
3	RNS	B	2002	2	-	0/12/14/14	0/0/0/0
3	RNS	C	2003	2	-	0/12/14/14	0/0/0/0
3	RNS	D	2004	2	-	0/12/14/14	0/0/0/0

There are no bond length outliers.

All (2) bond angle outliers are listed below:

Mol	Chain	Res	Type	Atoms	Z	Observed(°)	Ideal(°)
3	C	2003	RNS	C3-C4-C5	-2.54	109.65	113.28
3	B	2002	RNS	C3-C4-C5	-2.30	109.99	113.28

There are no chirality outliers.

There are no torsion outliers.

There are no ring outliers.

No monomer is involved in short contacts.

## 5.7 Other polymers

There are no such residues in this entry.

## 5.8 Polymer linkage issues

There are no chain breaks in this entry.

## 6 Fit of model and data ⓘ

### 6.1 Protein, DNA and RNA chains ⓘ

In the following table, the column labelled ‘#RSRZ > 2’ contains the number (and percentage) of RSRZ outliers, followed by percent RSRZ outliers for the chain as percentile scores relative to all X-ray entries and entries of similar resolution. The OWAB column contains the minimum, median, 95<sup>th</sup> percentile and maximum values of the occupancy-weighted average B-factor per residue. The column labelled ‘Q < 0.9’ lists the number of (and percentage) of residues with an average occupancy less than 0.9.

Mol	Chain	Analysed	<RSRZ>	#RSRZ>2	OWAB(Å <sup>2</sup> )	Q<0.9
1	A	421/438 (96%)	-0.33	3 (0%) 87 92	11, 18, 30, 47	0
1	B	421/438 (96%)	-0.10	9 (2%) 64 73	12, 20, 36, 52	0
1	C	428/438 (97%)	0.12	15 (3%) 44 55	13, 24, 43, 66	0
1	D	419/438 (95%)	-0.12	5 (1%) 79 85	12, 19, 32, 53	0
All	All	1689/1752 (96%)	-0.11	32 (1%) 67 76	11, 20, 36, 66	0

All (32) RSRZ outliers are listed below:

Mol	Chain	Res	Type	RSRZ
1	C	319	GLY	10.4
1	C	427	GLY	6.1
1	B	314	ALA	5.5
1	B	423	VAL	5.0
1	B	4	PHE	4.6
1	D	4	PHE	3.9
1	C	318	LYS	3.8
1	C	316	GLY	3.7
1	B	424	ALA	3.7
1	D	421	ALA	3.6
1	C	426	GLY	3.4
1	A	423	VAL	3.4
1	D	420	PRO	3.4
1	C	4	PHE	3.4
1	C	429	ILE	3.3
1	B	316	GLY	3.3
1	C	317	VAL	3.2
1	B	422	SER	3.0
1	C	428	GLY	3.0
1	C	424	ALA	2.7
1	C	430	ILE	2.7

*Continued on next page...*

*Continued from previous page...*

Mol	Chain	Res	Type	RSRZ
1	D	255	LEU	2.7
1	A	319	GLY	2.3
1	B	317	VAL	2.3
1	C	110	LYS	2.3
1	B	7	ALA	2.3
1	B	313	GLU	2.2
1	D	3	GLU	2.2
1	A	424	ALA	2.1
1	C	135	PRO	2.0
1	C	3	GLU	2.0
1	C	108	ASP	2.0

## 6.2 Non-standard residues in protein, DNA, RNA chains [i](#)

There are no non-standard protein/DNA/RNA residues in this entry.

## 6.3 Carbohydrates [i](#)

There are no carbohydrates in this entry.

## 6.4 Ligands [i](#)

In the following table, the Atoms column lists the number of modelled atoms in the group and the number defined in the chemical component dictionary. LLDF column lists the quality of electron density of the group with respect to its neighbouring residues in protein, DNA or RNA chains. The B-factors column lists the minimum, median, 95<sup>th</sup> percentile and maximum values of B factors of atoms in the group. The column labelled 'Q < 0.9' lists the number of atoms with occupancy less than 0.9.

Mol	Type	Chain	Res	Atoms	RSCC	RSR	LLDF	B-factors(Å <sup>2</sup> )	Q<0.9
3	RNS	A	2001	11/11	0.93	0.12	3.34	18,20,25,25	0
3	RNS	D	2004	11/11	0.93	0.13	1.95	19,23,29,30	0
3	RNS	B	2002	11/11	0.91	0.12	1.36	19,23,27,28	0
3	RNS	C	2003	11/11	0.94	0.10	-0.19	26,28,32,32	0
2	MN	C	505	1/1	0.99	0.06	-3.26	22,22,22,22	0
2	MN	C	506	1/1	0.99	0.05	-3.71	23,23,23,23	0
2	MN	A	501	1/1	0.99	0.05	-3.80	18,18,18,18	0
2	MN	D	508	1/1	0.99	0.04	-3.80	20,20,20,20	0
2	MN	A	502	1/1	0.99	0.05	-4.39	20,20,20,20	0
2	MN	B	504	1/1	0.99	0.04	-4.43	23,23,23,23	0

*Continued on next page...*

*Continued from previous page...*

Mol	Type	Chain	Res	Atoms	RSCC	RSR	LLDF	B-factors( $\text{\AA}^2$ )	Q<0.9
2	MN	D	507	1/1	0.99	0.07	-	19,19,19,19	0
2	MN	B	503	1/1	0.98	0.05	-	23,23,23,23	0

## 6.5 Other polymers [i](#)

There are no such residues in this entry.