



Full wwPDB X-ray Structure Validation Report ⓘ

Nov 8, 2017 – 03:17 PM EST

PDB ID : 4M1O
Title : Crystal Structure of small molecule vinylsulfonamide 7 covalently bound to K-Ras G12C
Authors : Ostrem, J.M.; Peters, U.; Sos, M.L.; Wells, J.A.; Shokat, K.M.
Deposited on : unknown
Resolution : 1.57 Å(reported)

This is a Full wwPDB X-ray Structure Validation Report for a publicly released PDB entry.

We welcome your comments at validation@mail.wwpdb.org

A user guide is available at

<http://wwpdb.org/validation/2016/XrayValidationReportHelp>

with specific help available everywhere you see the ⓘ symbol.

The following versions of software and data (see [references ⓘ](#)) were used in the production of this report:

MolProbity : 4.02b-467
Mogul : 1.7.2 (RC1), CSD as538be (2017)
Xtriage (Phenix) : 1.9-1692
EDS : rb-20030345
Percentile statistics : 20161228.v01 (using entries in the PDB archive December 28th 2016)
Refmac : 5.8.0135
CCP4 : 6.5.0
Ideal geometry (proteins) : Engh & Huber (2001)
Ideal geometry (DNA, RNA) : Parkinson et al. (1996)
Validation Pipeline (wwPDB-VP) : rb-20030345

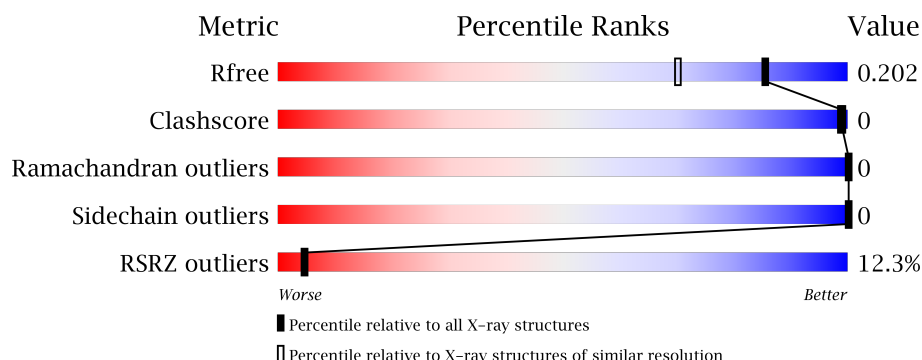
1 Overall quality at a glance

The following experimental techniques were used to determine the structure:

X-RAY DIFFRACTION

The reported resolution of this entry is 1.57 Å.

Percentile scores (ranging between 0-100) for global validation metrics of the entry are shown in the following graphic. The table shows the number of entries on which the scores are based.



Metric	Whole archive (#Entries)	Similar resolution (#Entries, resolution range(Å))
R_{free}	100719	4211 (1.60-1.56)
Clashscore	112137	4539 (1.60-1.56)
Ramachandran outliers	110173	4423 (1.60-1.56)
Sidechain outliers	110143	4420 (1.60-1.56)
RSRZ outliers	101464	4232 (1.60-1.56)

The table below summarises the geometric issues observed across the polymeric chains and their fit to the electron density. The red, orange, yellow and green segments on the lower bar indicate the fraction of residues that contain outliers for ≥ 3 , 2, 1 and 0 types of geometric quality criteria. A grey segment represents the fraction of residues that are not modelled. The numeric value for each fraction is indicated below the corresponding segment, with a dot representing fractions $\leq 5\%$. The upper red bar (where present) indicates the fraction of residues that have poor fit to the electron density. The numeric value is given above the bar.

Mol	Chain	Length	Quality of chain
1	A	170	<div> <div>11%</div> <div> <div></div> <div>92%</div> <div>5%</div> </div> </div>
1	B	170	<div> <div>11%</div> <div> <div></div> <div>94%</div> <div>6%</div> </div> </div>
1	C	170	<div> <div>12%</div> <div> <div></div> <div>88%</div> <div>11%</div> </div> </div>

2 Entry composition

There are 4 unique types of molecules in this entry. The entry contains 7649 atoms, of which 3672 are hydrogens and 0 are deuteriums.

In the tables below, the ZeroOcc column contains the number of atoms modelled with zero occupancy, the AltConf column contains the number of residues with at least one atom in alternate conformation and the Trace column contains the number of residues modelled with at most 2 atoms.

- Molecule 1 is a protein called K-Ras GTPase.

Mol	Chain	Residues	Atoms						ZeroOcc	AltConf	Trace
1	A	161	Total	C	H	N	O	S	0	1	0
			2526	798	1253	221	249	5			
1	B	160	Total	C	H	N	O	S	0	1	0
			2496	787	1239	219	246	5			
1	C	151	Total	C	H	N	O	S	0	1	0
			2273	730	1121	200	218	4			

There are 33 discrepancies between the modelled and reference sequences:

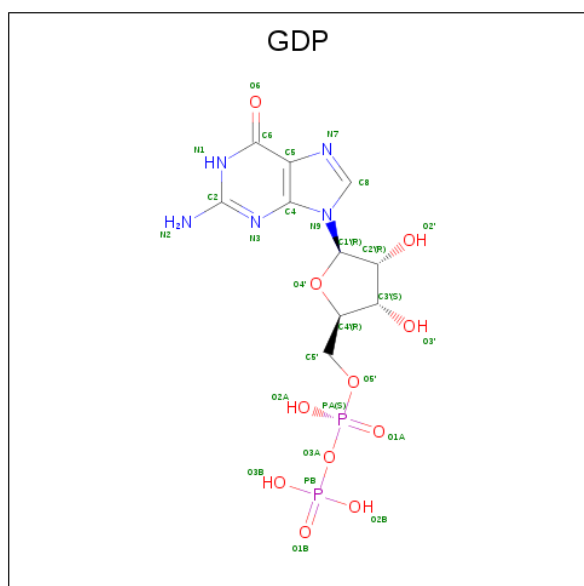
Chain	Residue	Modelled	Actual	Comment	Reference
A	0	GLY	-	EXPRESSION TAG	UNP P01116
A	12	CYS	GLY	VARIANT	UNP P01116
A	51	SER	CYS	ENGINEERED MUTATION	UNP P01116
A	80	LEU	CYS	ENGINEERED MUTATION	UNP P01116
A	118	SER	CYS	ENGINEERED MUTATION	UNP P01116
A	151	GLY	ARG	SEE REMARK 999	UNP P01116
A	153	ASP	GLU	SEE REMARK 999	UNP P01116
A	165	LYS	GLN	SEE REMARK 999	UNP P01116
A	166	HIS	TYR	SEE REMARK 999	UNP P01116
A	167	LYS	ARG	SEE REMARK 999	UNP P01116
A	168	GLU	LEU	SEE REMARK 999	UNP P01116
B	0	GLY	-	EXPRESSION TAG	UNP P01116
B	12	CYS	GLY	VARIANT	UNP P01116
B	51	SER	CYS	ENGINEERED MUTATION	UNP P01116
B	80	LEU	CYS	ENGINEERED MUTATION	UNP P01116
B	118	SER	CYS	ENGINEERED MUTATION	UNP P01116
B	151	GLY	ARG	SEE REMARK 999	UNP P01116
B	153	ASP	GLU	SEE REMARK 999	UNP P01116
B	165	LYS	GLN	SEE REMARK 999	UNP P01116
B	166	HIS	TYR	SEE REMARK 999	UNP P01116
B	167	LYS	ARG	SEE REMARK 999	UNP P01116
B	168	GLU	LEU	SEE REMARK 999	UNP P01116
C	0	GLY	-	EXPRESSION TAG	UNP P01116

Continued on next page...

Continued from previous page...

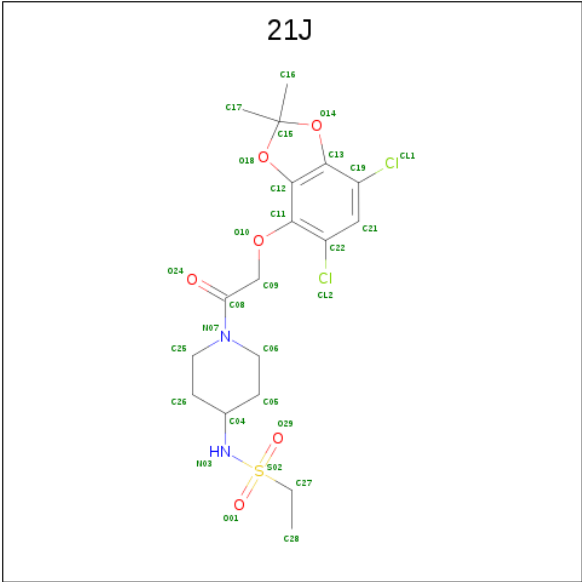
Chain	Residue	Modelled	Actual	Comment	Reference
C	12	CYS	GLY	VARIANT	UNP P01116
C	51	SER	CYS	ENGINEERED MUTATION	UNP P01116
C	80	LEU	CYS	ENGINEERED MUTATION	UNP P01116
C	118	SER	CYS	ENGINEERED MUTATION	UNP P01116
C	151	GLY	ARG	SEE REMARK 999	UNP P01116
C	153	ASP	GLU	SEE REMARK 999	UNP P01116
C	165	LYS	GLN	SEE REMARK 999	UNP P01116
C	166	HIS	TYR	SEE REMARK 999	UNP P01116
C	167	LYS	ARG	SEE REMARK 999	UNP P01116
C	168	GLU	LEU	SEE REMARK 999	UNP P01116

- Molecule 2 is GUANOSINE-5'-DIPHOSPHATE (three-letter code: GDP) (formula: $C_{10}H_{15}N_5O_{11}P_2$).



Mol	Chain	Residues	Atoms						ZeroOcc	AltConf
2	A	1	Total	C	H	N	O	P	0	0
			40	10	12	5	11	2		
2	B	1	Total	C	H	N	O	P	0	0
			40	10	12	5	11	2		
2	C	1	Total	C	H	N	O	P	0	0
			40	10	12	5	11	2		

- Molecule 3 is N-(1-[(5,7-dichloro-2,2-dimethyl-1,3-benzodioxol-4-yl)oxy]acetyl)piperidin-4-yl)ethanesulfonamide (three-letter code: 21J) (formula: $C_{18}H_{24}Cl_2N_2O_6S$).



Mol	Chain	Residues	Atoms							ZeroOcc	AltConf
3	B	1	Total	C	Cl	H	N	O	S	0	0
			52	18	2	23	2	6	1		

- Molecule 4 is water.

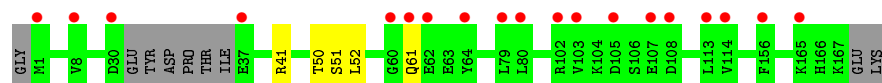
Mol	Chain	Residues	Atoms		ZeroOcc	AltConf
4	A	66	Total	O	0	0
			66	66		
4	B	65	Total	O	0	0
			65	65		
4	C	51	Total	O	0	0
			51	51		

3 Residue-property plots [i](#)

These plots are drawn for all protein, RNA and DNA chains in the entry. The first graphic for a chain summarises the proportions of the various outlier classes displayed in the second graphic. The second graphic shows the sequence view annotated by issues in geometry and electron density. Residues are color-coded according to the number of geometric quality criteria for which they contain at least one outlier: green = 0, yellow = 1, orange = 2 and red = 3 or more. A red dot above a residue indicates a poor fit to the electron density ($RSRZ > 2$). Stretches of 2 or more consecutive residues without any outlier are shown as a green connector. Residues present in the sample, but not in the model, are shown in grey.

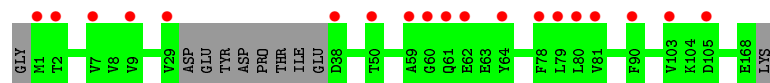
- Molecule 1: K-Ras GTPase

Chain A: 




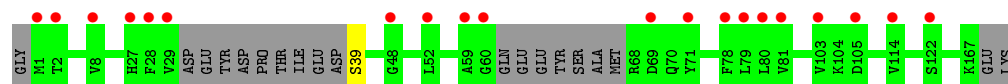
- Molecule 1: K-Ras GTPase

Chain B: 



- Molecule 1: K-Ras GTPase

Chain C: 



4 Data and refinement statistics

Property	Value	Source
Space group	C 1 2 1	Depositor
Cell constants a, b, c, α , β , γ	68.33 Å 84.16 Å 86.43 Å 90.00° 110.95° 90.00°	Depositor
Resolution (Å)	23.52 – 1.57 23.52 – 1.57	Depositor EDS
% Data completeness (in resolution range)	99.4 (23.52-1.57) 94.9 (23.52-1.57)	Depositor EDS
R_{merge}	0.06	Depositor
R_{sym}	0.06	Depositor
$\langle I/\sigma(I) \rangle$ ¹	3.39 (at 1.57 Å)	Xtriage
Refinement program	PHENIX dev_1402	Depositor
R, R_{free}	0.183 , 0.202 0.177 , 0.202	Depositor DCC
R_{free} test set	1911 reflections (3.17%)	DCC
Wilson B-factor (Å ²)	23.7	Xtriage
Anisotropy	0.357	Xtriage
Bulk solvent k_{sol} (e/Å ³), B_{sol} (Å ²)	0.40 , 45.4	EDS
L-test for twinning ²	$\langle L \rangle = 0.50$, $\langle L^2 \rangle = 0.33$	Xtriage
Estimated twinning fraction	0.014 for h,-k,-h-l	Xtriage
F_o, F_c correlation	0.97	EDS
Total number of atoms	7649	wwPDB-VP
Average B, all atoms (Å ²)	43.0	wwPDB-VP

Xtriage's analysis on translational NCS is as follows: *The largest off-origin peak in the Patterson function is 6.64% of the height of the origin peak. No significant pseudotranslation is detected.*

¹Intensities estimated from amplitudes.

²Theoretical values of $\langle |L| \rangle$, $\langle L^2 \rangle$ for acentric reflections are 0.5, 0.333 respectively for untwinned datasets, and 0.375, 0.2 for perfectly twinned datasets.

5 Model quality

5.1 Standard geometry

Bond lengths and bond angles in the following residue types are not validated in this section: GDP, 21J

The Z score for a bond length (or angle) is the number of standard deviations the observed value is removed from the expected value. A bond length (or angle) with $|Z| > 5$ is considered an outlier worth inspection. RMSZ is the root-mean-square of all Z scores of the bond lengths (or angles).

Mol	Chain	Bond lengths		Bond angles	
		RMSZ	$\# Z > 5$	RMSZ	$\# Z > 5$
1	A	0.38	0/1294	0.55	0/1744
1	B	0.35	0/1277	0.49	0/1720
1	C	0.36	0/1171	0.52	0/1582
All	All	0.37	0/3742	0.52	0/5046

There are no bond length outliers.

There are no bond angle outliers.

There are no chirality outliers.

There are no planarity outliers.

5.2 Too-close contacts

In the following table, the Non-H and H(model) columns list the number of non-hydrogen atoms and hydrogen atoms in the chain respectively. The H(added) column lists the number of hydrogen atoms added and optimized by MolProbity. The Clashes column lists the number of clashes within the asymmetric unit, whereas Symm-Clashes lists symmetry related clashes.

Mol	Chain	Non-H	H(model)	H(added)	Clashes	Symm-Clashes
1	A	1273	1253	1252	2	2
1	B	1257	1239	1237	0	0
1	C	1152	1121	1120	1	0
2	A	28	12	12	0	0
2	B	28	12	12	0	0
2	C	28	12	12	0	0
3	B	29	23	23	0	0
4	A	66	0	0	1	0
4	B	65	0	0	0	0
4	C	51	0	0	1	1
All	All	3977	3672	3668	3	2

The all-atom clashscore is defined as the number of clashes found per 1000 atoms (including hydrogen atoms). The all-atom clashscore for this structure is 0.

All (3) close contacts within the same asymmetric unit are listed below, sorted by their clash magnitude.

Atom-1	Atom-2	Interatomic distance (Å)	Clash overlap (Å)
1:C:39:SER:N	4:C:351:HOH:O	2.24	0.70
1:A:41:ARG:HG3	1:A:52:LEU:HD21	2.01	0.42
1:A:51:SER:OG	4:A:363:HOH:O	1.95	0.41

All (2) symmetry-related close contacts are listed below. The label for Atom-2 includes the symmetry operator and encoded unit-cell translations to be applied.

Atom-1	Atom-2	Interatomic distance (Å)	Clash overlap (Å)
1:A:50:THR:HG1	1:A:50:THR:HG1[2_655]	1.15	0.45
1:A:61:GLN:O	4:C:350:HOH:O[1_554]	1.85	0.35

5.3 Torsion angles [i](#)

5.3.1 Protein backbone [i](#)

In the following table, the Percentiles column shows the percent Ramachandran outliers of the chain as a percentile score with respect to all X-ray entries followed by that with respect to entries of similar resolution.

The Analysed column shows the number of residues for which the backbone conformation was analysed, and the total number of residues.

Mol	Chain	Analysed	Favoured	Allowed	Outliers	Percentiles	
1	A	158/170 (93%)	156 (99%)	2 (1%)	0	100	100
1	B	157/170 (92%)	155 (99%)	2 (1%)	0	100	100
1	C	146/170 (86%)	143 (98%)	3 (2%)	0	100	100
All	All	461/510 (90%)	454 (98%)	7 (2%)	0	100	100

There are no Ramachandran outliers to report.

5.3.2 Protein sidechains [i](#)

In the following table, the Percentiles column shows the percent sidechain outliers of the chain as a percentile score with respect to all X-ray entries followed by that with respect to entries of similar

resolution.

The Analysed column shows the number of residues for which the sidechain conformation was analysed, and the total number of residues.

Mol	Chain	Analysed	Rotameric	Outliers	Percentiles	
1	A	138/150 (92%)	138 (100%)	0	100	100
1	B	136/150 (91%)	136 (100%)	0	100	100
1	C	119/150 (79%)	119 (100%)	0	100	100
All	All	393/450 (87%)	393 (100%)	0	100	100

There are no protein residues with a non-rotameric sidechain to report.

Some sidechains can be flipped to improve hydrogen bonding and reduce clashes. There are no such sidechains identified.

5.3.3 RNA ⓘ

There are no RNA molecules in this entry.

5.4 Non-standard residues in protein, DNA, RNA chains ⓘ

There are no non-standard protein/DNA/RNA residues in this entry.

5.5 Carbohydrates ⓘ

There are no carbohydrates in this entry.

5.6 Ligand geometry ⓘ

4 ligands are modelled in this entry.

In the following table, the Counts columns list the number of bonds (or angles) for which Mogul statistics could be retrieved, the number of bonds (or angles) that are observed in the model and the number of bonds (or angles) that are defined in the Chemical Component Dictionary. The Link column lists molecule types, if any, to which the group is linked. The Z score for a bond length (or angle) is the number of standard deviations the observed value is removed from the expected value. A bond length (or angle) with $|Z| > 2$ is considered an outlier worth inspection. RMSZ is the root-mean-square of all Z scores of the bond lengths (or angles).

Mol	Type	Chain	Res	Link	Bond lengths			Bond angles		
					Counts	RMSZ	$\# Z > 2$	Counts	RMSZ	$\# Z > 2$
2	GDP	A	201	-	25,30,30	1.09	2 (8%)	23,47,47	1.18	4 (17%)

Mol	Type	Chain	Res	Link	Bond lengths			Bond angles		
					Counts	RMSZ	# Z > 2	Counts	RMSZ	# Z > 2
3	21J	B	201	1	30,31,31	2.29	8 (26%)	41,47,47	2.69	12 (29%)
2	GDP	B	202	-	25,30,30	1.13	3 (12%)	23,47,47	1.29	4 (17%)
2	GDP	C	201	-	25,30,30	1.18	3 (12%)	23,47,47	1.31	4 (17%)

In the following table, the Chirals column lists the number of chiral outliers, the number of chiral centers analysed, the number of these observed in the model and the number defined in the Chemical Component Dictionary. Similar counts are reported in the Torsion and Rings columns. '-' means no outliers of that kind were identified.

Mol	Type	Chain	Res	Link	Chirals	Torsions	Rings
2	GDP	A	201	-	-	0/12/32/32	0/3/3/3
3	21J	B	201	1	-	0/17/37/37	0/3/3/3
2	GDP	B	202	-	-	0/12/32/32	0/3/3/3
2	GDP	C	201	-	-	0/12/32/32	0/3/3/3

All (16) bond length outliers are listed below:

Mol	Chain	Res	Type	Atoms	Z	Observed(Å)	Ideal(Å)
3	B	201	21J	O18-C15	-7.11	1.37	1.46
3	B	201	21J	O14-C15	-5.46	1.39	1.46
2	C	201	GDP	C6-N1	-2.30	1.33	1.36
3	B	201	21J	C26-C25	-2.11	1.46	1.52
2	A	201	GDP	C6-C5	2.05	1.44	1.41
3	B	201	21J	O10-C11	2.06	1.43	1.39
3	B	201	21J	C13-C19	2.24	1.45	1.40
2	A	201	GDP	C5-C4	2.33	1.45	1.40
2	B	202	GDP	C2-N2	2.51	1.36	1.32
2	C	201	GDP	C5-C4	2.52	1.46	1.40
2	B	202	GDP	C5-C4	2.73	1.46	1.40
2	B	202	GDP	C6-C5	2.84	1.46	1.41
3	B	201	21J	C12-C11	2.94	1.44	1.39
3	B	201	21J	S02-N03	3.40	1.67	1.62
2	C	201	GDP	C6-C5	3.51	1.47	1.41
3	B	201	21J	C08-N07	4.94	1.46	1.35

All (24) bond angle outliers are listed below:

Mol	Chain	Res	Type	Atoms	Z	Observed(°)	Ideal(°)
3	B	201	21J	O29-S02-O01	-9.32	104.17	119.31
2	C	201	GDP	C4-C5-N7	-2.71	106.79	109.41
3	B	201	21J	C26-C25-N07	-2.57	107.03	110.82

Continued on next page...

Continued from previous page...

Mol	Chain	Res	Type	Atoms	Z	Observed(°)	Ideal(°)
2	B	202	GDP	N2-C2-N3	-2.55	117.13	120.26
2	A	201	GDP	N2-C2-N3	-2.48	117.22	120.26
2	C	201	GDP	C1'-N9-C4	-2.46	122.39	126.64
2	C	201	GDP	N2-C2-N3	-2.35	117.37	120.26
2	B	202	GDP	C4-C5-N7	-2.28	107.21	109.41
2	B	202	GDP	C1'-N9-C4	-2.21	122.82	126.64
2	A	201	GDP	C4-C5-N7	-2.14	107.34	109.41
3	B	201	21J	C21-C22-CL2	-2.13	115.12	118.50
2	A	201	GDP	C1'-N9-C4	-2.08	123.03	126.64
3	B	201	21J	C05-C04-N03	2.08	114.51	110.40
3	B	201	21J	C05-C06-N07	2.62	114.67	110.82
3	B	201	21J	O10-C11-C22	2.69	124.86	121.14
2	A	201	GDP	C2-N3-C4	2.70	118.31	115.16
3	B	201	21J	O18-C12-C11	2.79	130.25	123.84
2	B	202	GDP	C2-N3-C4	3.14	118.83	115.16
2	C	201	GDP	C2-N3-C4	3.36	119.08	115.16
3	B	201	21J	O01-S02-N03	3.39	111.34	107.00
3	B	201	21J	C06-C05-C04	3.64	117.03	110.41
3	B	201	21J	O14-C15-C17	4.87	113.18	108.94
3	B	201	21J	C11-C22-CL2	4.93	124.23	118.46
3	B	201	21J	O14-C13-C19	7.72	132.90	123.56

There are no chirality outliers.

There are no torsion outliers.

There are no ring outliers.

No monomer is involved in short contacts.

5.7 Other polymers [i](#)

There are no such residues in this entry.

5.8 Polymer linkage issues [i](#)

There are no chain breaks in this entry.

6 Fit of model and data ⓘ

6.1 Protein, DNA and RNA chains ⓘ

In the following table, the column labelled ‘#RSRZ> 2’ contains the number (and percentage) of RSRZ outliers, followed by percent RSRZ outliers for the chain as percentile scores relative to all X-ray entries and entries of similar resolution. The OWAB column contains the minimum, median, 95th percentile and maximum values of the occupancy-weighted average B-factor per residue. The column labelled ‘Q< 0.9’ lists the number of (and percentage) of residues with an average occupancy less than 0.9.

Mol	Chain	Analysed	<RSRZ>	#RSRZ>2	OWAB(Å ²)	Q<0.9
1	A	161/170 (94%)	0.45	19 (11%) 5 5	18, 32, 63, 85	0
1	B	160/170 (94%)	0.54	19 (11%) 5 5	19, 36, 72, 92	0
1	C	151/170 (88%)	0.73	20 (13%) 4 4	20, 40, 68, 81	0
All	All	472/510 (92%)	0.57	58 (12%) 5 5	18, 36, 68, 92	0

All (58) RSRZ outliers are listed below:

Mol	Chain	Res	Type	RSRZ
1	C	71	TYR	7.2
1	C	60	GLY	7.1
1	A	103	VAL	6.8
1	A	1	MET	5.1
1	B	64	TYR	4.6
1	C	1	MET	4.5
1	C	79	LEU	4.2
1	C	29	VAL	4.2
1	C	103	VAL	3.9
1	B	29	VAL	3.8
1	C	78	PHE	3.8
1	B	1	MET	3.7
1	B	59	ALA	3.6
1	C	2	THR	3.6
1	C	27	HIS	3.5
1	C	59	ALA	3.4
1	C	80	LEU	3.3
1	B	60	GLY	3.3
1	B	105	ASP	3.1
1	C	81	VAL	3.1
1	B	38	ASP	3.1
1	C	69	ASP	3.0
1	B	103	VAL	3.0

Continued on next page...

Continued from previous page...

Mol	Chain	Res	Type	RSRZ
1	A	64	TYR	3.0
1	A	80	LEU	2.9
1	B	81	VAL	2.9
1	C	48	GLY	2.8
1	B	9	VAL	2.8
1	A	79	LEU	2.7
1	B	80	LEU	2.7
1	C	52	LEU	2.7
1	A	102	ARG	2.6
1	A	114	VAL	2.6
1	A	8	VAL	2.6
1	B	2	THR	2.6
1	A	107	GLU	2.6
1	A	156	PHE	2.5
1	A	105	ASP	2.5
1	C	105	ASP	2.5
1	A	108	ASP	2.5
1	B	79	LEU	2.5
1	A	165	LYS	2.4
1	C	114	VAL	2.4
1	A	62	GLU	2.4
1	B	61	GLN	2.3
1	B	62	GLU	2.3
1	B	7	VAL	2.3
1	B	50	THR	2.3
1	B	78	PHE	2.2
1	C	122	SER	2.2
1	C	8	VAL	2.1
1	B	90	PHE	2.1
1	C	28	PHE	2.1
1	A	30	ASP	2.1
1	A	113	LEU	2.1
1	A	61	GLN	2.0
1	A	37	GLU	2.0
1	A	60	GLY	2.0

6.2 Non-standard residues in protein, DNA, RNA chains ⓘ

There are no non-standard protein/DNA/RNA residues in this entry.

6.3 Carbohydrates [i](#)

There are no carbohydrates in this entry.

6.4 Ligands [i](#)

In the following table, the Atoms column lists the number of modelled atoms in the group and the number defined in the chemical component dictionary. LLDF column lists the quality of electron density of the group with respect to its neighbouring residues in protein, DNA or RNA chains. The B-factors column lists the minimum, median, 95th percentile and maximum values of B factors of atoms in the group. The column labelled 'Q< 0.9' lists the number of atoms with occupancy less than 0.9.

Mol	Type	Chain	Res	Atoms	RSCC	RSR	LLDF	B-factors(\AA^2)	Q<0.9
3	21J	B	201	29/29	0.90	0.13	-0.04	26,39,52,54	0
2	GDP	C	201	28/28	0.94	0.09	-0.33	22,31,46,52	0
2	GDP	A	201	28/28	0.98	0.07	-0.61	18,26,36,43	0
2	GDP	B	202	28/28	0.97	0.07	-0.81	22,28,36,41	0

6.5 Other polymers [i](#)

There are no such residues in this entry.