



Full wwPDB X-ray Structure Validation Report ⓘ

Oct 31, 2017 – 09:56 AM EDT

PDB ID : 3M4P
Title : Entamoeba histolytica asparaginyl-tRNA synthetase (AsnRS) in complex with asparaginyl-adenylate
Authors : Larson, E.T.; Merritt, E.A.; Medical Structural Genomics of Pathogenic Protozoa (MSGPP)
Deposited on : unknown
Resolution : 2.83 Å(reported)

This is a Full wwPDB X-ray Structure Validation Report for a publicly released PDB entry.

We welcome your comments at validation@mail.wwpdb.org

A user guide is available at

<http://wwpdb.org/validation/2016/XrayValidationReportHelp>

with specific help available everywhere you see the ⓘ symbol.

The following versions of software and data (see [references ⓘ](#)) were used in the production of this report:

MolProbity : 4.02b-467
Mogul : 1.7.2 (RC1), CSD as538be (2017)
Xtriage (Phenix) : 1.9-1692
EDS : rb-20030345
Percentile statistics : 20161228.v01 (using entries in the PDB archive December 28th 2016)
Refmac : 5.8.0135
CCP4 : 6.5.0
Ideal geometry (proteins) : Engh & Huber (2001)
Ideal geometry (DNA, RNA) : Parkinson et al. (1996)
Validation Pipeline (wwPDB-VP) : rb-20030345

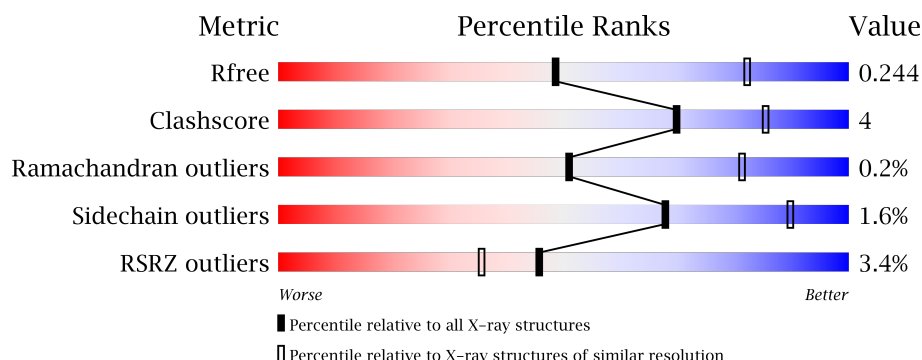
1 Overall quality at a glance ⓘ

The following experimental techniques were used to determine the structure:

X-RAY DIFFRACTION

The reported resolution of this entry is 2.83 Å.

Percentile scores (ranging between 0-100) for global validation metrics of the entry are shown in the following graphic. The table shows the number of entries on which the scores are based.



Metric	Whole archive (#Entries)	Similar resolution (#Entries, resolution range(Å))
R_{free}	100719	3466 (2.88-2.80)
Clashscore	112137	3975 (2.88-2.80)
Ramachandran outliers	110173	3902 (2.88-2.80)
Sidechain outliers	110143	3905 (2.88-2.80)
RSRZ outliers	101464	3501 (2.88-2.80)

The table below summarises the geometric issues observed across the polymeric chains and their fit to the electron density. The red, orange, yellow and green segments on the lower bar indicate the fraction of residues that contain outliers for ≥ 3 , 2, 1 and 0 types of geometric quality criteria. A grey segment represents the fraction of residues that are not modelled. The numeric value for each fraction is indicated below the corresponding segment, with a dot representing fractions $\leq 5\%$. The upper red bar (where present) indicates the fraction of residues that have poor fit to the electron density. The numeric value is given above the bar.

Mol	Chain	Length	Quality of chain
1	A	456	<div> <div>4%</div> <div>88%</div> <div>7%</div> <div>5%</div> </div>
1	B	456	<div> <div>2%</div> <div>84%</div> <div>11%</div> <div>5%</div> </div>
1	C	456	<div> <div>4%</div> <div>82%</div> <div>12%</div> <div>6%</div> </div>
1	D	456	<div> <div>2%</div> <div>86%</div> <div>9%</div> <div>5%</div> </div>

The following table lists non-polymeric compounds, carbohydrate monomers and non-standard residues in protein, DNA, RNA chains that are outliers for geometric or electron-density-fit crite-

ria:

Mol	Type	Chain	Res	Chirality	Geometry	Clashes	Electron density
3	SO4	A	511	-	-	-	X
3	SO4	B	511	-	-	-	X
4	GOL	A	521	-	-	-	X
4	GOL	D	521	-	-	-	X

2 Entry composition

There are 5 unique types of molecules in this entry. The entry contains 14100 atoms, of which 0 are hydrogens and 0 are deuteriums.

In the tables below, the ZeroOcc column contains the number of atoms modelled with zero occupancy, the AltConf column contains the number of residues with at least one atom in alternate conformation and the Trace column contains the number of residues modelled with at most 2 atoms.

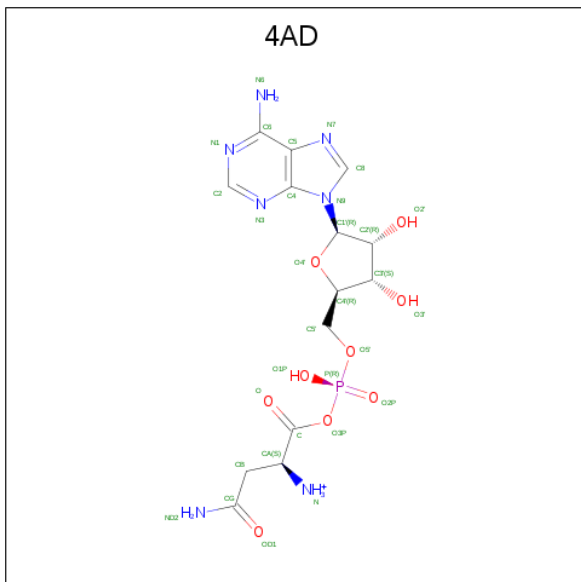
- Molecule 1 is a protein called Asparaginyl-tRNA synthetase, putative.

Mol	Chain	Residues	Atoms					ZeroOcc	AltConf	Trace
1	A	435	Total	C	N	O	S	0	0	0
			3490	2231	594	639	26			
1	B	435	Total	C	N	O	S	0	0	0
			3483	2228	588	641	26			
1	C	429	Total	C	N	O	S	0	0	0
			3454	2211	583	634	26			
1	D	435	Total	C	N	O	S	0	0	0
			3475	2225	585	639	26			

There are 20 discrepancies between the modelled and reference sequences:

Chain	Residue	Modelled	Actual	Comment	Reference
A	-4	GLY	-	EXPRESSION TAG	UNP C4LWW8
A	-3	PRO	-	EXPRESSION TAG	UNP C4LWW8
A	-2	GLY	-	EXPRESSION TAG	UNP C4LWW8
A	-1	SER	-	EXPRESSION TAG	UNP C4LWW8
A	0	MET	-	EXPRESSION TAG	UNP C4LWW8
B	-4	GLY	-	EXPRESSION TAG	UNP C4LWW8
B	-3	PRO	-	EXPRESSION TAG	UNP C4LWW8
B	-2	GLY	-	EXPRESSION TAG	UNP C4LWW8
B	-1	SER	-	EXPRESSION TAG	UNP C4LWW8
B	0	MET	-	EXPRESSION TAG	UNP C4LWW8
C	-4	GLY	-	EXPRESSION TAG	UNP C4LWW8
C	-3	PRO	-	EXPRESSION TAG	UNP C4LWW8
C	-2	GLY	-	EXPRESSION TAG	UNP C4LWW8
C	-1	SER	-	EXPRESSION TAG	UNP C4LWW8
C	0	MET	-	EXPRESSION TAG	UNP C4LWW8
D	-4	GLY	-	EXPRESSION TAG	UNP C4LWW8
D	-3	PRO	-	EXPRESSION TAG	UNP C4LWW8
D	-2	GLY	-	EXPRESSION TAG	UNP C4LWW8
D	-1	SER	-	EXPRESSION TAG	UNP C4LWW8
D	0	MET	-	EXPRESSION TAG	UNP C4LWW8

- Molecule 2 is 4-AMINO-1,4-DIOXOBUTAN-2-AMINIUM ADENOSINE-5'-MONOPHOSPHATE (three-letter code: 4AD) (formula: $C_{14}H_{21}N_7O_9P$).



Mol	Chain	Residues	Atoms					ZeroOcc	AltConf
2	A	1	Total	C	N	O	P	0	0
			31	14	7	9	1		
2	B	1	Total	C	N	O	P	0	0
			31	14	7	9	1		
2	C	1	Total	C	N	O	P	0	0
			31	14	7	9	1		
2	D	1	Total	C	N	O	P	0	0
			31	14	7	9	1		

- Molecule 3 is SULFATE ION (three-letter code: SO4) (formula: O_4S).



Mol	Chain	Residues	Atoms			ZeroOcc	AltConf
3	A	1	Total	O	S	0	0
			5	4	1		
3	A	1	Total	O	S	0	0
			5	4	1		
3	A	1	Total	O	S	0	0
			5	4	1		
3	B	1	Total	O	S	0	0
			5	4	1		
3	B	1	Total	O	S	0	0
			5	4	1		
3	B	1	Total	O	S	0	0
			5	4	1		
3	C	1	Total	O	S	0	0
			5	4	1		
3	C	1	Total	O	S	0	0
			5	4	1		
3	C	1	Total	O	S	0	0
			5	4	1		
3	D	1	Total	O	S	0	0
			5	4	1		
3	D	1	Total	O	S	0	0
			5	4	1		
3	D	1	Total	O	S	0	0
			5	4	1		

- Molecule 4 is GLYCEROL (three-letter code: GOL) (formula: C₃H₈O₃).



Mol	Chain	Residues	Atoms			ZeroOcc	AltConf
4	A	1	Total	C	O	0	0
			6	3	3		
4	D	1	Total	C	O	0	0
			6	3	3		

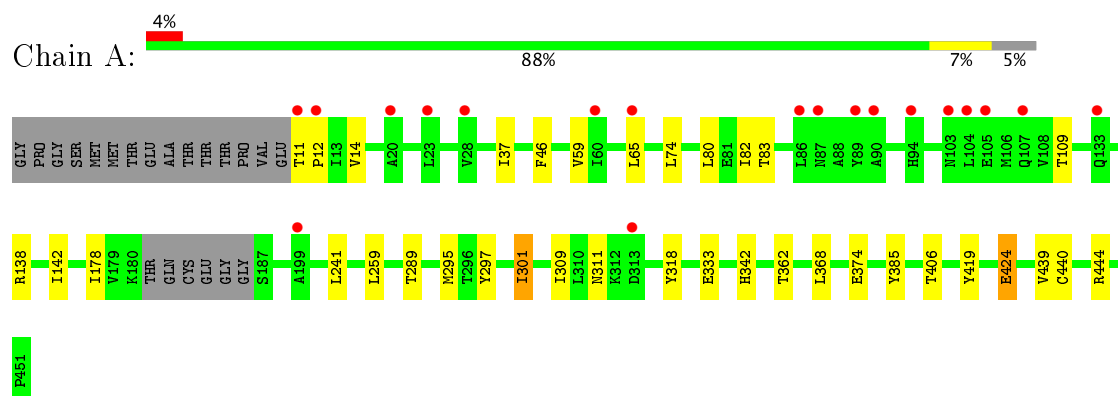
- Molecule 5 is water.

Mol	Chain	Residues	Atoms		ZeroOcc	AltConf
5	A	1	Total	O	0	0
			1	1		
5	B	1	Total	O	0	0
			1	1		

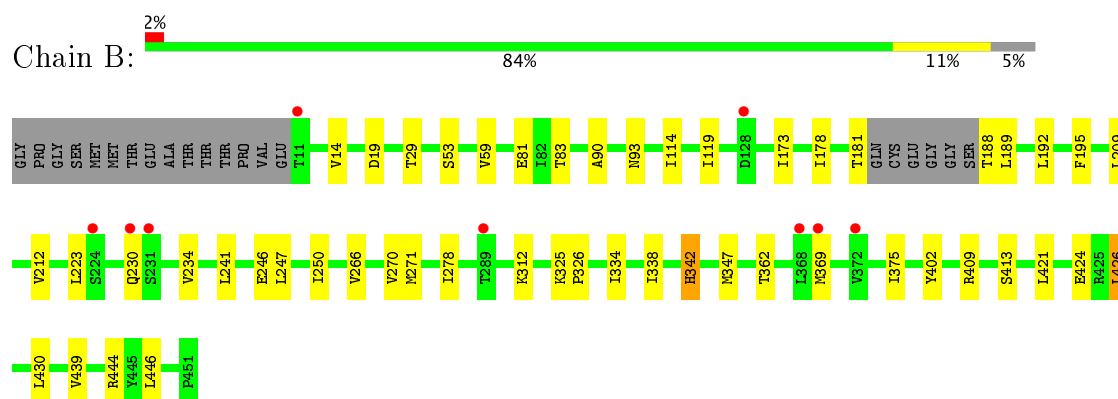
3 Residue-property plots [i](#)

These plots are drawn for all protein, RNA and DNA chains in the entry. The first graphic for a chain summarises the proportions of the various outlier classes displayed in the second graphic. The second graphic shows the sequence view annotated by issues in geometry and electron density. Residues are color-coded according to the number of geometric quality criteria for which they contain at least one outlier: green = 0, yellow = 1, orange = 2 and red = 3 or more. A red dot above a residue indicates a poor fit to the electron density ($RSRZ > 2$). Stretches of 2 or more consecutive residues without any outlier are shown as a green connector. Residues present in the sample, but not in the model, are shown in grey.

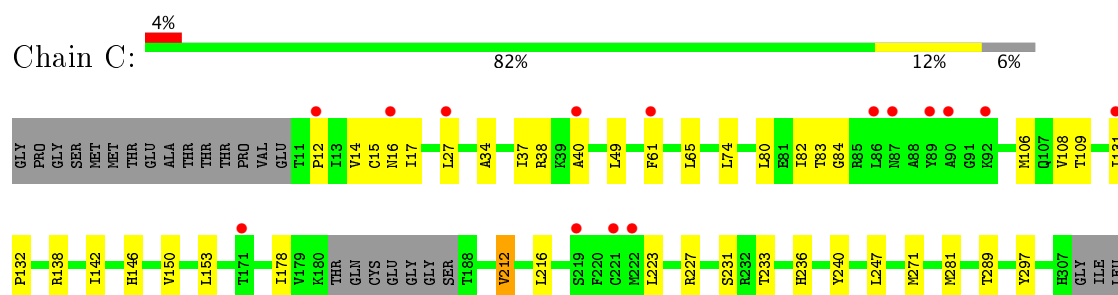
- Molecule 1: Asparaginyl-tRNA synthetase, putative

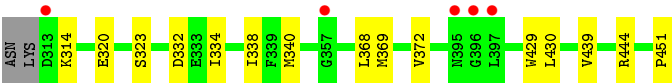


- Molecule 1: Asparaginyl-tRNA synthetase, putative

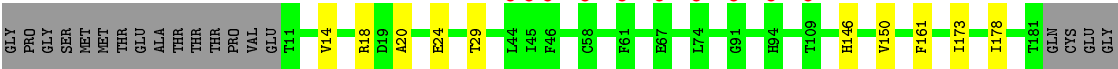
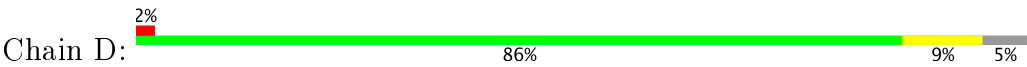


- Molecule 1: Asparaginyl-tRNA synthetase, putative





● Molecule 1: Asparaginyl-tRNA synthetase, putative



4 Data and refinement statistics

Property	Value	Source
Space group	P 1 21 1	Depositor
Cell constants a, b, c, α , β , γ	99.43Å 58.82Å 181.26Å 90.00° 90.45° 90.00°	Depositor
Resolution (Å)	41.36 – 2.83 41.36 – 2.83	Depositor EDS
% Data completeness (in resolution range)	99.8 (41.36-2.83) 99.8 (41.36-2.83)	Depositor EDS
R_{merge}	0.06	Depositor
R_{sym}	(Not available)	Depositor
$\langle I/\sigma(I) \rangle$ ¹	3.37 (at 2.81Å)	Xtriage
Refinement program	REFMAC refmac _5.5.0106	Depositor
R, R_{free}	0.199 , 0.247 0.199 , 0.244	Depositor DCC
R_{free} test set	2576 reflections (5.35%)	DCC
Wilson B-factor (Å ²)	65.2	Xtriage
Anisotropy	0.561	Xtriage
Bulk solvent k_{sol} (e/Å ³), B_{sol} (Å ²)	0.31 , 43.6	EDS
L-test for twinning ²	$\langle L \rangle = 0.49$, $\langle L^2 \rangle = 0.32$	Xtriage
Estimated twinning fraction	0.020 for h,-k,-l	Xtriage
F_o, F_c correlation	0.94	EDS
Total number of atoms	14100	wwPDB-VP
Average B, all atoms (Å ²)	75.0	wwPDB-VP

Xtriage's analysis on translational NCS is as follows: *The largest off-origin peak in the Patterson function is 3.86% of the height of the origin peak. No significant pseudotranslation is detected.*

¹Intensities estimated from amplitudes.

²Theoretical values of $\langle |L| \rangle$, $\langle L^2 \rangle$ for acentric reflections are 0.5, 0.333 respectively for untwinned datasets, and 0.375, 0.2 for perfectly twinned datasets.

5 Model quality [i](#)

5.1 Standard geometry [i](#)

Bond lengths and bond angles in the following residue types are not validated in this section: 4AD, GOL, SO4

The Z score for a bond length (or angle) is the number of standard deviations the observed value is removed from the expected value. A bond length (or angle) with $|Z| > 5$ is considered an outlier worth inspection. RMSZ is the root-mean-square of all Z scores of the bond lengths (or angles).

Mol	Chain	Bond lengths		Bond angles	
		RMSZ	$\# Z > 5$	RMSZ	$\# Z > 5$
1	A	0.37	0/3579	0.52	0/4851
1	B	0.37	0/3573	0.52	0/4847
1	C	0.36	0/3543	0.51	0/4800
1	D	0.36	0/3565	0.49	0/4836
All	All	0.36	0/14260	0.51	0/19334

There are no bond length outliers.

There are no bond angle outliers.

There are no chirality outliers.

There are no planarity outliers.

5.2 Too-close contacts [i](#)

In the following table, the Non-H and H(model) columns list the number of non-hydrogen atoms and hydrogen atoms in the chain respectively. The H(added) column lists the number of hydrogen atoms added and optimized by MolProbity. The Clashes column lists the number of clashes within the asymmetric unit, whereas Symm-Clashes lists symmetry related clashes.

Mol	Chain	Non-H	H(model)	H(added)	Clashes	Symm-Clashes
1	A	3490	0	3398	20	0
1	B	3483	0	3370	31	0
1	C	3454	0	3355	38	0
1	D	3475	0	3356	32	0
2	A	31	0	20	0	0
2	B	31	0	20	0	0
2	C	31	0	20	0	0
2	D	31	0	20	1	0
3	A	15	0	0	0	0

Continued on next page...

Continued from previous page...

Mol	Chain	Non-H	H(model)	H(added)	Clashes	Symm-Clashes
3	B	15	0	0	0	0
3	C	15	0	0	0	0
3	D	15	0	0	0	0
4	A	6	0	8	1	0
4	D	6	0	8	0	0
5	A	1	0	0	0	0
5	B	1	0	0	0	0
All	All	14100	0	13575	117	0

The all-atom clashscore is defined as the number of clashes found per 1000 atoms (including hydrogen atoms). The all-atom clashscore for this structure is 4.

All (117) close contacts within the same asymmetric unit are listed below, sorted by their clash magnitude.

Atom-1	Atom-2	Interatomic distance (Å)	Clash overlap (Å)
1:C:82:ILE:HG22	1:C:106:MET:HE2	1.39	1.03
1:C:82:ILE:HG22	1:C:106:MET:CE	1.89	1.00
1:C:82:ILE:CG2	1:C:106:MET:HE2	2.15	0.74
1:C:82:ILE:HG22	1:C:106:MET:HE1	1.72	0.72
1:D:18:ARG:HD2	1:D:20:ALA:HB3	1.78	0.66
1:C:233:THR:HG23	1:C:236:HIS:HB2	1.77	0.66
1:B:334:ILE:HG21	1:B:338:ILE:HD11	1.81	0.62
1:B:173:ILE:HD11	1:B:209:LEU:HD23	1.80	0.62
1:D:271:MET:HE1	1:D:278:ILE:CD1	2.30	0.62
1:C:444:ARG:NH2	1:D:178:ILE:O	2.32	0.62
1:A:301:ILE:HD12	1:A:318:TYR:HA	1.81	0.62
1:C:271:MET:CE	1:C:430:LEU:HD11	2.29	0.62
1:C:178:ILE:O	1:D:444:ARG:NH2	2.33	0.61
1:D:296:THR:HG23	1:D:299:ASP:H	1.66	0.60
1:B:181:THR:HG23	1:B:402:TYR:OH	2.00	0.60
1:B:247:LEU:N	1:B:247:LEU:HD12	2.17	0.59
1:B:247:LEU:HB2	1:B:250:ILE:HD13	1.84	0.59
1:A:297:TYR:OH	1:A:301:ILE:HD11	2.02	0.59
1:B:439:VAL:O	1:B:439:VAL:HG12	2.02	0.59
1:C:14:VAL:HG11	1:C:83:THR:HG23	1.85	0.59
1:D:296:THR:HG22	1:D:299:ASP:OD2	2.04	0.58
1:B:271:MET:HE1	1:B:278:ILE:HG21	1.85	0.57
1:C:38:ARG:NE	1:C:40:ALA:HB2	2.19	0.57
1:D:146:HIS:O	1:D:150:VAL:HG23	2.06	0.56
1:D:271:MET:HE1	1:D:278:ILE:HD12	1.88	0.56
1:C:12:PRO:HB2	1:C:27:LEU:HD12	1.87	0.56

Continued on next page...

Continued from previous page...

Atom-1	Atom-2	Interatomic distance (Å)	Clash overlap (Å)
1:A:80:LEU:HD13	1:A:82:ILE:HD11	1.87	0.56
1:B:241:LEU:N	1:B:424:GLU:OE1	2.36	0.55
1:B:14:VAL:HG11	1:B:83:THR:HG23	1.89	0.55
1:C:84:GLY:HA3	1:C:106:MET:HE3	1.87	0.55
1:C:297:TYR:OH	1:C:320:GLU:O	2.24	0.54
1:D:444:ARG:NH1	1:D:451:PRO:OXT	2.38	0.54
1:A:309:ILE:HD11	1:A:333:GLU:OE2	2.08	0.53
1:D:301:ILE:HD13	1:D:322:ILE:HD11	1.90	0.53
1:A:444:ARG:NH2	1:B:178:ILE:O	2.40	0.53
1:C:340:MET:CE	1:C:368:LEU:HD11	2.38	0.53
1:C:340:MET:HE2	1:C:368:LEU:HD11	1.91	0.53
1:D:14:VAL:HG11	1:D:29:THR:OG1	2.10	0.52
1:C:334:ILE:HG21	1:C:338:ILE:HD11	1.92	0.52
1:A:241:LEU:N	1:A:424:GLU:OE2	2.39	0.51
1:C:271:MET:HE3	1:C:430:LEU:HD11	1.91	0.51
1:D:190:PHE:CD2	1:D:228:ALA:HB2	2.45	0.51
1:B:439:VAL:O	1:B:439:VAL:CG1	2.59	0.51
1:C:212:VAL:CG1	1:C:216:LEU:HD12	2.41	0.51
1:B:188:THR:C	1:B:189:LEU:HD23	2.31	0.51
1:D:260:GLU:HB3	1:D:290:ARG:HD3	1.91	0.51
1:D:325:LYS:CB	1:D:326:PRO:HD3	2.41	0.50
1:C:223:LEU:N	1:C:223:LEU:HD23	2.27	0.50
1:B:14:VAL:HG11	1:B:29:THR:OG1	2.10	0.50
1:D:300:ALA:CB	1:D:340:MET:HE1	2.42	0.50
1:B:266:VAL:O	1:B:270:VAL:HG23	2.12	0.49
1:B:173:ILE:CD1	1:B:209:LEU:HD23	2.42	0.49
1:D:450:GLU:HA	1:D:451:PRO:C	2.33	0.49
1:D:271:MET:HE3	1:D:430:LEU:HD11	1.93	0.49
1:B:223:LEU:N	1:B:223:LEU:HD23	2.27	0.49
1:A:14:VAL:HG11	1:A:83:THR:HG23	1.94	0.48
1:C:34:ALA:HB2	1:C:80:LEU:HD11	1.94	0.48
1:D:223:LEU:N	1:D:223:LEU:HD23	2.28	0.48
1:D:439:VAL:CG1	1:D:439:VAL:O	2.61	0.48
1:D:271:MET:CE	1:D:430:LEU:HD11	2.43	0.48
1:A:440:CYS:SG	4:A:521:GOL:H31	2.54	0.47
1:C:65:LEU:HD21	1:C:109:THR:O	2.15	0.47
1:D:422:GLY:HA3	2:D:500:4AD:H1'	1.97	0.47
1:B:334:ILE:CG2	1:B:338:ILE:HD11	2.45	0.47
1:A:259:LEU:HD21	1:A:419:TYR:CG	2.50	0.47
1:B:81:GLU:HB2	1:B:114:ILE:HD11	1.95	0.46
1:D:161:PHE:CZ	1:D:426:LEU:HD22	2.50	0.46

Continued on next page...

Continued from previous page...

Atom-1	Atom-2	Interatomic distance (Å)	Clash overlap (Å)
1:B:271:MET:CE	1:B:278:ILE:HG21	2.45	0.46
1:C:138:ARG:O	1:C:142:ILE:HG23	2.14	0.46
1:C:131:ILE:HB	1:C:132:PRO:HD3	1.97	0.46
1:A:439:VAL:CG1	1:A:439:VAL:O	2.64	0.46
1:C:61:PHE:O	1:C:65:LEU:HD12	2.16	0.46
1:D:212:VAL:HG13	1:D:216:LEU:HD12	1.98	0.46
1:D:212:VAL:CG1	1:D:216:LEU:HD12	2.46	0.46
1:C:212:VAL:HG13	1:C:216:LEU:HD12	1.98	0.45
1:C:372:VAL:HG11	1:C:429:TRP:HB2	1.98	0.45
1:B:90:ALA:HB3	1:B:93:ASN:OD1	2.17	0.45
1:D:161:PHE:HZ	1:D:426:LEU:HD22	1.81	0.45
1:A:385:TYR:CE1	1:A:406:THR:HG22	2.52	0.45
1:C:153:LEU:HD11	1:C:281:MET:CE	2.47	0.45
1:B:271:MET:CE	1:B:430:LEU:HD11	2.47	0.45
1:D:322:ILE:HG22	1:D:327:GLU:HG3	1.98	0.45
1:B:230:GLN:HG3	1:B:446:LEU:HD22	1.99	0.44
1:D:368:LEU:HD23	1:D:374:GLU:HA	1.98	0.44
1:B:325:LYS:CB	1:B:326:PRO:HD3	2.48	0.44
1:A:178:ILE:O	1:B:444:ARG:NH2	2.45	0.44
1:A:368:LEU:HD23	1:A:374:GLU:HA	2.00	0.43
1:A:37:ILE:HD13	1:A:74:LEU:HG	2.00	0.43
1:C:49:LEU:HD13	1:C:82:ILE:CD1	2.48	0.43
1:B:271:MET:HE1	1:B:278:ILE:CD1	2.49	0.43
1:B:421:LEU:HD23	1:B:421:LEU:C	2.38	0.43
1:A:65:LEU:HD21	1:A:109:THR:O	2.19	0.43
1:B:375:ILE:HD12	1:B:426:LEU:HD12	2.01	0.43
1:C:439:VAL:CG1	1:C:439:VAL:O	2.67	0.43
1:A:11:THR:N	1:A:12:PRO:CD	2.82	0.42
1:A:342:HIS:HA	1:A:362:THR:O	2.18	0.42
1:D:439:VAL:HG13	1:D:439:VAL:O	2.19	0.42
1:C:15:CYS:SG	1:C:17:ILE:HG23	2.59	0.42
1:B:119:ILE:HA	1:B:119:ILE:HD12	1.92	0.41
1:C:34:ALA:HB1	1:C:37:ILE:HD11	2.02	0.41
1:C:49:LEU:HD13	1:C:82:ILE:HD12	2.02	0.41
1:D:173:ILE:HD11	1:D:209:LEU:HD23	2.01	0.41
1:B:409:ARG:HA	1:B:413:SER:HB2	2.02	0.41
1:C:146:HIS:O	1:C:150:VAL:HG23	2.21	0.41
1:C:247:LEU:N	1:C:247:LEU:HD12	2.35	0.41
1:A:138:ARG:O	1:A:142:ILE:HG23	2.21	0.41
1:B:342:HIS:HA	1:B:362:THR:O	2.20	0.41
1:A:46:PHE:CD1	1:A:59:VAL:HG12	2.56	0.41

Continued on next page...

Continued from previous page...

Atom-1	Atom-2	Interatomic distance (Å)	Clash overlap (Å)
1:C:444:ARG:NH1	1:C:451:PRO:O	2.44	0.41
1:D:388:LEU:O	1:D:391:ALA:HB3	2.21	0.41
1:C:227:ARG:NH2	1:C:240:TYR:OH	2.54	0.41
1:C:106:MET:HE2	1:C:108:VAL:HG22	2.02	0.41
1:B:246:GLU:C	1:B:247:LEU:HD12	2.41	0.40
1:D:271:MET:CE	1:D:278:ILE:HG21	2.51	0.40
1:C:74:LEU:HD13	1:C:80:LEU:HD21	2.03	0.40
1:A:297:TYR:CZ	1:A:301:ILE:HD11	2.55	0.40
1:D:301:ILE:HG23	1:D:316:PHE:HB3	2.03	0.40

There are no symmetry-related clashes.

5.3 Torsion angles [i](#)

5.3.1 Protein backbone [i](#)

In the following table, the Percentiles column shows the percent Ramachandran outliers of the chain as a percentile score with respect to all X-ray entries followed by that with respect to entries of similar resolution.

The Analysed column shows the number of residues for which the backbone conformation was analysed, and the total number of residues.

Mol	Chain	Analysed	Favoured	Allowed	Outliers	Percentiles	
1	A	431/456 (94%)	406 (94%)	25 (6%)	0	100	100
1	B	431/456 (94%)	412 (96%)	16 (4%)	3 (1%)	25	56
1	C	423/456 (93%)	401 (95%)	22 (5%)	0	100	100
1	D	431/456 (94%)	409 (95%)	21 (5%)	1 (0%)	51	81
All	All	1716/1824 (94%)	1628 (95%)	84 (5%)	4 (0%)	51	81

All (4) Ramachandran outliers are listed below:

Mol	Chain	Res	Type
1	D	312	LYS
1	B	312	LYS
1	B	195	PHE
1	B	234	VAL

5.3.2 Protein sidechains ⓘ

In the following table, the Percentiles column shows the percent sidechain outliers of the chain as a percentile score with respect to all X-ray entries followed by that with respect to entries of similar resolution.

The Analysed column shows the number of residues for which the sidechain conformation was analysed, and the total number of residues.

Mol	Chain	Analysed	Rotameric	Outliers	Percentiles	
1	A	377/406 (93%)	372 (99%)	5 (1%)	73	92
1	B	376/406 (93%)	367 (98%)	9 (2%)	54	83
1	C	374/406 (92%)	366 (98%)	8 (2%)	59	86
1	D	373/406 (92%)	371 (100%)	2 (0%)	91	97
All	All	1500/1624 (92%)	1476 (98%)	24 (2%)	68	90

All (24) residues with a non-rotameric sidechain are listed below:

Mol	Chain	Res	Type
1	A	289	THR
1	A	295	MET
1	A	301	ILE
1	A	311	ASN
1	A	424	GLU
1	B	19	ASP
1	B	53	SER
1	B	59	VAL
1	B	192	LEU
1	B	212	VAL
1	B	342	HIS
1	B	347	MET
1	B	369	MET
1	B	426	LEU
1	C	16	ASN
1	C	212	VAL
1	C	231	SER
1	C	289	THR
1	C	314	LYS
1	C	323	SER
1	C	332	ASP
1	C	369	MET
1	D	24	GLU
1	D	439	VAL

Some sidechains can be flipped to improve hydrogen bonding and reduce clashes. All (1) such sidechains are listed below:

Mol	Chain	Res	Type
1	B	133	GLN

5.3.3 RNA [i](#)

There are no RNA molecules in this entry.

5.4 Non-standard residues in protein, DNA, RNA chains [i](#)

There are no non-standard protein/DNA/RNA residues in this entry.

5.5 Carbohydrates [i](#)

There are no carbohydrates in this entry.

5.6 Ligand geometry [i](#)

18 ligands are modelled in this entry.

In the following table, the Counts columns list the number of bonds (or angles) for which Mogul statistics could be retrieved, the number of bonds (or angles) that are observed in the model and the number of bonds (or angles) that are defined in the Chemical Component Dictionary. The Link column lists molecule types, if any, to which the group is linked. The Z score for a bond length (or angle) is the number of standard deviations the observed value is removed from the expected value. A bond length (or angle) with $|Z| > 2$ is considered an outlier worth inspection. RMSZ is the root-mean-square of all Z scores of the bond lengths (or angles).

Mol	Type	Chain	Res	Link	Bond lengths			Bond angles		
					Counts	RMSZ	$\# Z > 2$	Counts	RMSZ	$\# Z > 2$
2	4AD	A	500	-	28,33,33	1.54	2 (7%)	29,49,49	1.87	2 (6%)
3	SO4	A	511	-	4,4,4	0.14	0	6,6,6	0.11	0
3	SO4	A	512	-	4,4,4	0.14	0	6,6,6	0.11	0
3	SO4	A	513	-	4,4,4	0.16	0	6,6,6	0.14	0
4	GOL	A	521	-	5,5,5	0.33	0	5,5,5	0.35	0
2	4AD	B	500	-	28,33,33	1.58	2 (7%)	29,49,49	1.77	1 (3%)
3	SO4	B	511	-	4,4,4	0.14	0	6,6,6	0.09	0
3	SO4	B	512	-	4,4,4	0.16	0	6,6,6	0.09	0
3	SO4	B	513	-	4,4,4	0.14	0	6,6,6	0.11	0
2	4AD	C	500	-	28,33,33	1.60	2 (7%)	29,49,49	1.96	3 (10%)

Mol	Type	Chain	Res	Link	Bond lengths			Bond angles		
					Counts	RMSZ	# Z > 2	Counts	RMSZ	# Z > 2
3	SO4	C	511	-	4,4,4	0.15	0	6,6,6	0.18	0
3	SO4	C	512	-	4,4,4	0.13	0	6,6,6	0.11	0
3	SO4	C	513	-	4,4,4	0.15	0	6,6,6	0.13	0
2	4AD	D	500	-	28,33,33	1.58	3 (10%)	29,49,49	1.94	2 (6%)
3	SO4	D	511	-	4,4,4	0.11	0	6,6,6	0.20	0
3	SO4	D	512	-	4,4,4	0.14	0	6,6,6	0.14	0
3	SO4	D	513	-	4,4,4	0.15	0	6,6,6	0.11	0
4	GOL	D	521	-	5,5,5	0.34	0	5,5,5	0.37	0

In the following table, the Chirals column lists the number of chiral outliers, the number of chiral centers analysed, the number of these observed in the model and the number defined in the Chemical Component Dictionary. Similar counts are reported in the Torsion and Rings columns. '-' means no outliers of that kind were identified.

Mol	Type	Chain	Res	Link	Chirals	Torsions	Rings
2	4AD	A	500	-	-	0/17/39/39	0/3/3/3
3	SO4	A	511	-	-	0/0/0/0	0/0/0/0
3	SO4	A	512	-	-	0/0/0/0	0/0/0/0
3	SO4	A	513	-	-	0/0/0/0	0/0/0/0
4	GOL	A	521	-	-	0/4/4/4	0/0/0/0
2	4AD	B	500	-	-	0/17/39/39	0/3/3/3
3	SO4	B	511	-	-	0/0/0/0	0/0/0/0
3	SO4	B	512	-	-	0/0/0/0	0/0/0/0
3	SO4	B	513	-	-	0/0/0/0	0/0/0/0
2	4AD	C	500	-	-	0/17/39/39	0/3/3/3
3	SO4	C	511	-	-	0/0/0/0	0/0/0/0
3	SO4	C	512	-	-	0/0/0/0	0/0/0/0
3	SO4	C	513	-	-	0/0/0/0	0/0/0/0
2	4AD	D	500	-	-	0/17/39/39	0/3/3/3
3	SO4	D	511	-	-	0/0/0/0	0/0/0/0
3	SO4	D	512	-	-	0/0/0/0	0/0/0/0
3	SO4	D	513	-	-	0/0/0/0	0/0/0/0
4	GOL	D	521	-	-	0/4/4/4	0/0/0/0

All (9) bond length outliers are listed below:

Mol	Chain	Res	Type	Atoms	Z	Observed(Å)	Ideal(Å)
2	D	500	4AD	C5-N7	-2.05	1.32	1.39
2	A	500	4AD	O4'-C1'	3.05	1.45	1.41
2	B	500	4AD	O4'-C1'	3.68	1.46	1.41
2	C	500	4AD	O4'-C1'	3.88	1.46	1.41
2	D	500	4AD	O4'-C1'	3.90	1.46	1.41

Continued on next page...

Continued from previous page...

Mol	Chain	Res	Type	Atoms	Z	Observed(Å)	Ideal(Å)
2	D	500	4AD	C8-N7	6.46	1.46	1.34
2	A	500	4AD	C8-N7	6.56	1.47	1.34
2	B	500	4AD	C8-N7	6.73	1.47	1.34
2	C	500	4AD	C8-N7	6.87	1.47	1.34

All (8) bond angle outliers are listed below:

Mol	Chain	Res	Type	Atoms	Z	Observed(°)	Ideal(°)
2	D	500	4AD	N3-C2-N1	-9.06	120.97	128.86
2	C	500	4AD	N3-C2-N1	-9.06	120.97	128.86
2	A	500	4AD	N3-C2-N1	-8.61	121.36	128.86
2	B	500	4AD	N3-C2-N1	-8.42	121.53	128.86
2	C	500	4AD	C4'-O4'-C1'	-2.12	107.52	109.77
2	D	500	4AD	O1P-P-O3P	2.08	110.69	104.11
2	C	500	4AD	O1P-P-O3P	2.74	112.80	104.11
2	A	500	4AD	O1P-P-O3P	2.88	113.22	104.11

There are no chirality outliers.

There are no torsion outliers.

There are no ring outliers.

2 monomers are involved in 2 short contacts:

Mol	Chain	Res	Type	Clashes	Symm-Clashes
4	A	521	GOL	1	0
2	D	500	4AD	1	0

5.7 Other polymers [i](#)

There are no such residues in this entry.

5.8 Polymer linkage issues [i](#)

There are no chain breaks in this entry.

6 Fit of model and data

6.1 Protein, DNA and RNA chains

In the following table, the column labelled ‘#RSRZ> 2’ contains the number (and percentage) of RSRZ outliers, followed by percent RSRZ outliers for the chain as percentile scores relative to all X-ray entries and entries of similar resolution. The OWAB column contains the minimum, median, 95th percentile and maximum values of the occupancy-weighted average B-factor per residue. The column labelled ‘Q< 0.9’ lists the number of (and percentage) of residues with an average occupancy less than 0.9.

Mol	Chain	Analysed	<RSRZ>	#RSRZ>2	OWAB(Å ²)	Q<0.9
1	A	435/456 (95%)	0.22	19 (4%) 35 26	38, 70, 129, 168	0
1	B	435/456 (95%)	-0.01	9 (2%) 64 56	45, 70, 117, 147	0
1	C	429/456 (94%)	0.19	20 (4%) 32 23	42, 74, 122, 156	0
1	D	435/456 (95%)	0.10	11 (2%) 58 49	39, 73, 129, 156	0
All	All	1734/1824 (95%)	0.12	59 (3%) 46 35	38, 72, 125, 168	0

All (59) RSRZ outliers are listed below:

Mol	Chain	Res	Type	RSRZ
1	D	61	PHE	4.4
1	D	91	GLY	4.1
1	D	46	PHE	4.1
1	A	86	LEU	3.8
1	A	11	THR	3.8
1	C	90	ALA	3.7
1	A	28	VAL	3.7
1	A	104	LEU	3.6
1	D	45	ILE	3.6
1	D	44	LEU	3.4
1	B	128	ASP	3.4
1	D	109	THR	3.3
1	B	11	THR	3.3
1	C	89	TYR	3.2
1	A	103	ASN	3.1
1	A	12	PRO	3.1
1	C	12	PRO	3.1
1	D	94	HIS	3.0
1	C	40	ALA	3.0
1	A	90	ALA	2.9
1	B	372	VAL	2.9

Continued on next page...

Continued from previous page...

Mol	Chain	Res	Type	RSRZ
1	B	368	LEU	2.9
1	A	65	LEU	2.8
1	C	27	LEU	2.8
1	A	94	HIS	2.7
1	C	397	LEU	2.7
1	B	231	SER	2.7
1	C	396	GLY	2.7
1	C	16	ASN	2.6
1	C	87	ASN	2.6
1	D	67	GLU	2.5
1	A	199	ALA	2.5
1	A	89	TYR	2.5
1	D	308	GLY	2.5
1	C	221	CYS	2.5
1	A	313	ASP	2.5
1	A	60	ILE	2.4
1	D	58	CYS	2.4
1	B	230	GLN	2.4
1	B	224	SER	2.4
1	C	171	THR	2.3
1	C	61	PHE	2.3
1	A	87	ASN	2.3
1	C	395	ASN	2.3
1	B	369	MET	2.3
1	C	313	ASP	2.2
1	C	357	GLY	2.2
1	C	219	SER	2.2
1	C	86	LEU	2.2
1	A	133	GLN	2.2
1	B	289	THR	2.2
1	C	222	MET	2.2
1	A	20	ALA	2.1
1	C	131	ILE	2.1
1	A	107	GLN	2.1
1	D	74	LEU	2.1
1	A	23	LEU	2.1
1	C	92	LYS	2.0
1	A	105	GLU	2.0

6.2 Non-standard residues in protein, DNA, RNA chains ⓘ

There are no non-standard protein/DNA/RNA residues in this entry.

6.3 Carbohydrates ⓘ

There are no carbohydrates in this entry.

6.4 Ligands ⓘ

In the following table, the Atoms column lists the number of modelled atoms in the group and the number defined in the chemical component dictionary. LLDF column lists the quality of electron density of the group with respect to its neighbouring residues in protein, DNA or RNA chains. The B-factors column lists the minimum, median, 95th percentile and maximum values of B factors of atoms in the group. The column labelled 'Q< 0.9' lists the number of atoms with occupancy less than 0.9.

Mol	Type	Chain	Res	Atoms	RSCC	RSR	LLDF	B-factors(Å ²)	Q<0.9
4	GOL	D	521	6/6	0.87	0.56	7.93	75,77,80,80	0
4	GOL	A	521	6/6	0.87	0.43	5.57	75,79,79,79	0
3	SO4	A	511	5/5	0.94	0.58	5.02	117,117,117,118	0
3	SO4	B	511	5/5	0.69	0.45	3.95	146,147,147,147	0
3	SO4	B	512	5/5	0.73	0.24	1.04	137,137,138,140	0
2	4AD	B	500	31/31	0.87	0.23	0.89	93,96,101,103	0
3	SO4	C	512	5/5	0.48	0.31	0.89	161,161,161,162	0
3	SO4	D	512	5/5	0.90	0.23	0.55	111,112,114,114	0
2	4AD	D	500	31/31	0.94	0.20	0.27	44,55,83,83	0
2	4AD	C	500	31/31	0.92	0.20	-0.34	41,67,82,83	0
3	SO4	C	511	5/5	0.92	0.18	-0.55	103,104,104,105	0
2	4AD	A	500	31/31	0.94	0.17	-0.73	39,53,68,70	0
3	SO4	D	511	5/5	0.98	0.14	-1.33	74,76,79,80	0
3	SO4	B	513	5/5	0.90	0.28	-	125,126,127,128	0
3	SO4	C	513	5/5	0.88	0.36	-	117,117,118,118	0
3	SO4	A	513	5/5	0.86	0.40	-	121,121,121,122	0
3	SO4	D	513	5/5	0.87	0.61	-	153,153,153,153	0
3	SO4	A	512	5/5	0.53	0.35	-	140,140,141,141	0

6.5 Other polymers ⓘ

There are no such residues in this entry.