



Full wwPDB X-ray Structure Validation Report ⓘ

Oct 1, 2017 – 05:18 AM EDT

PDB ID : 1M79
Title : Candida albicans Dihydrofolate Reductase Complexed with Dihydro-Nicotina
mide-Adenine-Dinucleotide Phosphate (NADPH) and 5-(4-methoxyphenoxy)
-2,4-quinazolinediamine (GW1466)
Authors : Whitlow, M.; Howard, A.J.; Kuyper, L.F.
Deposited on : unknown
Resolution : 1.70 Å(reported)

This is a Full wwPDB X-ray Structure Validation Report for a publicly released PDB entry.

We welcome your comments at validation@mail.wwpdb.org

A user guide is available at

<http://wwpdb.org/validation/2016/XrayValidationReportHelp>

with specific help available everywhere you see the ⓘ symbol.

The following versions of software and data (see [references ⓘ](#)) were used in the production of this report:

MolProbity : 4.02b-467
Mogul : 1.7.2 (RC1), CSD as538be (2017)
Xtriage (Phenix) : 1.9-1692
EDS : rb-20030345
Percentile statistics : 20161228.v01 (using entries in the PDB archive December 28th 2016)
Refmac : 5.8.0135
CCP4 : 6.5.0
Ideal geometry (proteins) : Engh & Huber (2001)
Ideal geometry (DNA, RNA) : Parkinson et al. (1996)
Validation Pipeline (wwPDB-VP) : rb-20030345

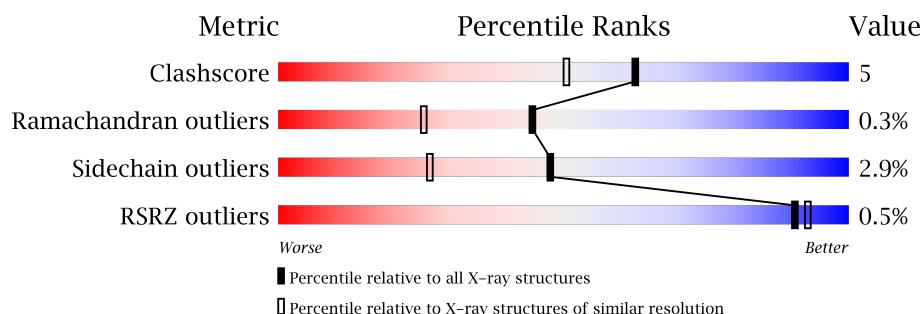
1 Overall quality at a glance

The following experimental techniques were used to determine the structure:

X-RAY DIFFRACTION

The reported resolution of this entry is 1.70 Å.

Percentile scores (ranging between 0-100) for global validation metrics of the entry are shown in the following graphic. The table shows the number of entries on which the scores are based.



Metric	Whole archive (#Entries)	Similar resolution (#Entries, resolution range(Å))
Clashscore	112137	3876 (1.70-1.70)
Ramachandran outliers	110173	3815 (1.70-1.70)
Sidechain outliers	110143	3815 (1.70-1.70)
RSRZ outliers	101464	3491 (1.70-1.70)

The table below summarises the geometric issues observed across the polymeric chains and their fit to the electron density. The red, orange, yellow and green segments on the lower bar indicate the fraction of residues that contain outliers for ≥ 3 , 2, 1 and 0 types of geometric quality criteria. A grey segment represents the fraction of residues that are not modelled. The numeric value for each fraction is indicated below the corresponding segment, with a dot representing fractions $\leq 5\%$. The upper red bar (where present) indicates the fraction of residues that have poor fit to the electron density. The numeric value is given above the bar.

Mol	Chain	Length	Quality of chain
1	A	192	 79% 15% 6%
1	B	192	 79% 19%

The following table lists non-polymeric compounds, carbohydrate monomers and non-standard residues in protein, DNA, RNA chains that are outliers for geometric or electron-density-fit criteria:

Mol	Type	Chain	Res	Chirality	Geometry	Clashes	Electron density
4	MES	B	202	-	-	-	X

2 Entry composition ⓘ

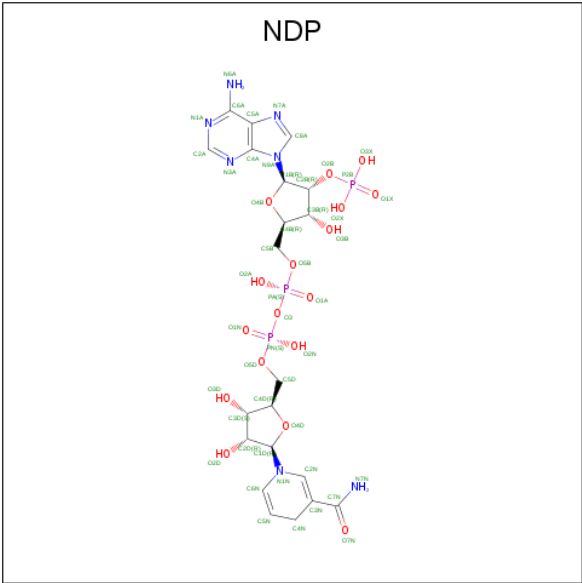
There are 5 unique types of molecules in this entry. The entry contains 3722 atoms, of which 0 are hydrogens and 0 are deuteriums.

In the tables below, the ZeroOcc column contains the number of atoms modelled with zero occupancy, the AltConf column contains the number of residues with at least one atom in alternate conformation and the Trace column contains the number of residues modelled with at most 2 atoms.

- Molecule 1 is a protein called dihydrofolate reductase.

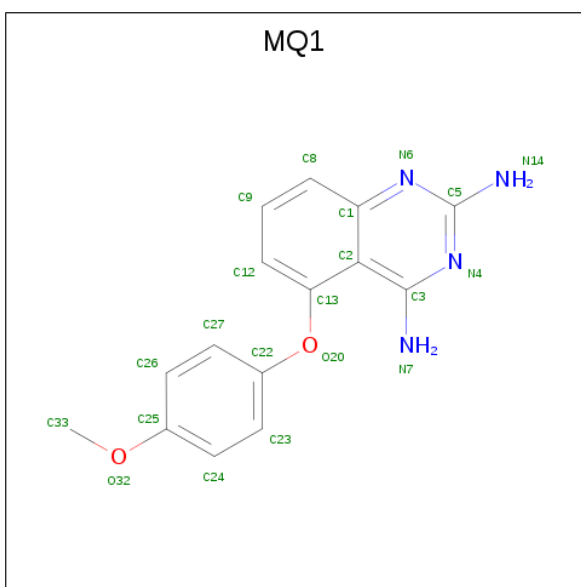
Mol	Chain	Residues	Atoms					ZeroOcc	AltConf	Trace
			Total	C	N	O	S			
1	A	192	Total 1602	1027	273	298	4	0	13	0
1	B	192	Total 1591	1021	265	301	4	0	11	0

- Molecule 2 is NADPH DIHYDRO-NICOTINAMIDE-ADENINE-DINUCLEOTIDE PHOSPHATE (three-letter code: NDP) (formula: C₂₁H₃₀N₇O₁₇P₃).



Mol	Chain	Residues	Atoms					ZeroOcc	AltConf
			Total	C	N	O	P		
2	A	1	Total 48	21	7	17	3	0	0
2	B	1	Total 48	21	7	17	3	0	0

- Molecule 3 is 5-(4-METHOXYPHENOXY)-2,4-QUINAZOLINEDIAMINE (three-letter code: MQ1) (formula: C₁₅H₁₄N₄O₂).



Mol	Chain	Residues	Atoms				ZeroOcc	AltConf
3	A	1	Total	C	N	O	0	0
			21	15	4	2		
3	B	1	Total	C	N	O	0	0
			21	15	4	2		

- Molecule 4 is 2-(N-MORPHOLINO)-ETHANESULFONIC ACID (three-letter code: MES) (formula: $C_6H_{13}NO_4S$).



Mol	Chain	Residues	Atoms					ZeroOcc	AltConf
4	A	1	Total	C	N	O	S	0	0
			12	6	1	4	1		

Continued on next page...

Continued from previous page...

Mol	Chain	Residues	Atoms					ZeroOcc	AltConf
4	B	1	Total	C	N	O	S	0	0
			12	6	1	4	1		

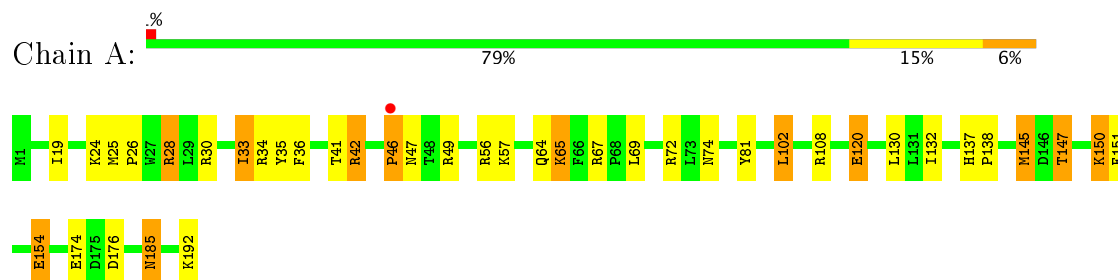
- Molecule 5 is water.

Mol	Chain	Residues	Atoms		ZeroOcc	AltConf
5	A	168	Total	O	0	7
			175	175		
5	B	186	Total	O	0	6
			192	192		

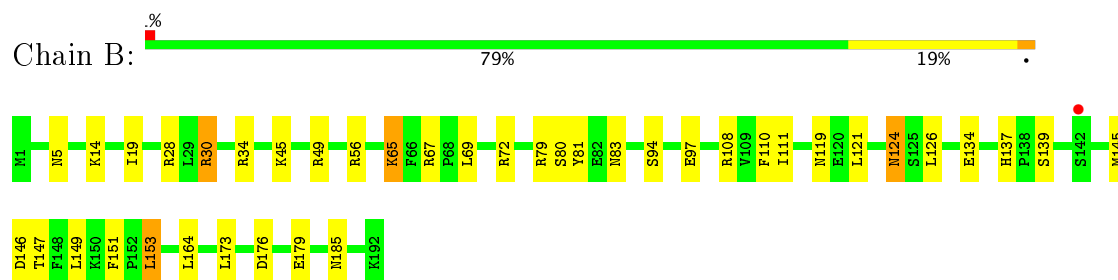
3 Residue-property plots [i](#)

These plots are drawn for all protein, RNA and DNA chains in the entry. The first graphic for a chain summarises the proportions of the various outlier classes displayed in the second graphic. The second graphic shows the sequence view annotated by issues in geometry and electron density. Residues are color-coded according to the number of geometric quality criteria for which they contain at least one outlier: green = 0, yellow = 1, orange = 2 and red = 3 or more. A red dot above a residue indicates a poor fit to the electron density ($RSRZ > 2$). Stretches of 2 or more consecutive residues without any outlier are shown as a green connector. Residues present in the sample, but not in the model, are shown in grey.

- Molecule 1: dihydrofolate reductase



- Molecule 1: dihydrofolate reductase



4 Data and refinement statistics

Property	Value	Source
Space group	P 1 21 1	Depositor
Cell constants a, b, c, α , β , γ	77.09 Å 67.03 Å 38.50 Å 90.00° 93.30° 90.00°	Depositor
Resolution (Å)	10.00 – 1.70 26.44 – 1.70	Depositor EDS
% Data completeness (in resolution range)	83.5 (10.00-1.70) 81.3 (26.44-1.70)	Depositor EDS
R_{merge}	0.06	Depositor
R_{sym}	0.06	Depositor
$\langle I/\sigma(I) \rangle$ ¹	1.29 (at 1.70 Å)	Xtriage
Refinement program	PROFFT	Depositor
R, R_{free}	0.145 , (Not available) 0.140 , (Not available)	Depositor DCC
R_{free} test set	No test flags present.	DCC
Wilson B-factor (Å ²)	14.4	Xtriage
Anisotropy	0.185	Xtriage
Bulk solvent k_{sol} (e/Å ³), B_{sol} (Å ²)	0.31 , 77.9	EDS
L-test for twinning ²	$\langle L \rangle = 0.48$, $\langle L^2 \rangle = 0.31$	Xtriage
Estimated twinning fraction	No twinning to report.	Xtriage
F_o, F_c correlation	0.97	EDS
Total number of atoms	3722	wwPDB-VP
Average B, all atoms (Å ²)	18.0	wwPDB-VP

Xtriage's analysis on translational NCS is as follows: *The largest off-origin peak in the Patterson function is 9.22% of the height of the origin peak. No significant pseudotranslation is detected.*

¹Intensities estimated from amplitudes.

²Theoretical values of $\langle |L| \rangle$, $\langle L^2 \rangle$ for acentric reflections are 0.5, 0.333 respectively for untwinned datasets, and 0.375, 0.2 for perfectly twinned datasets.

5 Model quality [i](#)

5.1 Standard geometry [i](#)

Bond lengths and bond angles in the following residue types are not validated in this section: MQ1, NDP, MES

The Z score for a bond length (or angle) is the number of standard deviations the observed value is removed from the expected value. A bond length (or angle) with $|Z| > 5$ is considered an outlier worth inspection. RMSZ is the root-mean-square of all Z scores of the bond lengths (or angles).

Mol	Chain	Bond lengths		Bond angles	
		RMSZ	$\# Z > 5$	RMSZ	$\# Z > 5$
1	A	1.19	1/1706 (0.1%)	1.89	51/2310 (2.2%)
1	B	1.17	1/1683 (0.1%)	1.61	24/2278 (1.1%)
All	All	1.18	2/3389 (0.1%)	1.76	75/4588 (1.6%)

All (2) bond length outliers are listed below:

Mol	Chain	Res	Type	Atoms	Z	Observed(Å)	Ideal(Å)
1	A	174	GLU	CD-OE1	-6.34	1.18	1.25
1	B	179	GLU	CD-OE1	-5.11	1.20	1.25

All (75) bond angle outliers are listed below:

Mol	Chain	Res	Type	Atoms	Z	Observed(°)	Ideal(°)
1	B	56	ARG	CD-NE-CZ	17.70	148.38	123.60
1	A	30[A]	ARG	NE-CZ-NH1	17.25	128.92	120.30
1	A	30[B]	ARG	NE-CZ-NH1	17.25	128.92	120.30
1	A	56	ARG	CD-NE-CZ	14.57	144.00	123.60
1	A	108	ARG	NE-CZ-NH1	-14.29	113.15	120.30
1	A	49	ARG	NE-CZ-NH2	-13.13	113.73	120.30
1	A	30[A]	ARG	CD-NE-CZ	12.68	141.36	123.60
1	A	30[B]	ARG	CD-NE-CZ	12.68	141.36	123.60
1	A	28	ARG	CD-NE-CZ	12.56	141.18	123.60
1	B	49	ARG	NE-CZ-NH2	-11.52	114.54	120.30
1	B	30	ARG	CD-NE-CZ	11.49	139.69	123.60
1	A	72	ARG	NE-CZ-NH1	11.46	126.03	120.30
1	A	42[A]	ARG	NE-CZ-NH1	10.04	125.32	120.30
1	A	42[B]	ARG	NE-CZ-NH1	10.04	125.32	120.30
1	B	110	PHE	CB-CG-CD1	-8.87	114.59	120.80
1	B	56	ARG	NE-CZ-NH2	8.33	124.47	120.30
1	A	30[A]	ARG	NE-CZ-NH2	-8.18	116.21	120.30

Continued on next page...

Continued from previous page...

Mol	Chain	Res	Type	Atoms	Z	Observed(°)	Ideal(°)
1	A	30[B]	ARG	NE-CZ-NH2	-8.18	116.21	120.30
1	A	154	GLU	CA-CB-CG	8.10	131.23	113.40
1	B	79	ARG	NE-CZ-NH2	-7.89	116.36	120.30
1	B	108	ARG	NE-CZ-NH1	7.86	124.23	120.30
1	A	72	ARG	NE-CZ-NH2	-7.83	116.38	120.30
1	A	81	TYR	CB-CG-CD1	7.57	125.54	121.00
1	B	81	TYR	CB-CG-CD1	7.38	125.43	121.00
1	B	145	MET	CA-CB-CG	7.33	125.76	113.30
1	B	67	ARG	CD-NE-CZ	7.29	133.81	123.60
1	A	151	PHE	CB-CG-CD1	7.17	125.81	120.80
1	A	34[A]	ARG	CD-NE-CZ	7.16	133.62	123.60
1	A	34[B]	ARG	CD-NE-CZ	7.16	133.62	123.60
1	A	67	ARG	NE-CZ-NH1	6.75	123.68	120.30
1	B	145	MET	CB-CG-SD	-6.75	92.15	112.40
1	A	81	TYR	CB-CG-CD2	-6.70	116.98	121.00
1	A	151	PHE	CB-CG-CD2	-6.59	116.19	120.80
1	B	79	ARG	NE-CZ-NH1	6.58	123.59	120.30
1	A	154	GLU	CB-CG-CD	6.37	131.39	114.20
1	B	119	ASN	CB-CA-C	6.18	122.77	110.40
1	A	120	GLU	CG-CD-OE2	-6.12	106.07	118.30
1	B	146	ASP	CB-CG-OD1	6.10	123.79	118.30
1	A	192	LYS	CA-CB-CG	5.98	126.55	113.40
1	A	145	MET	CG-SD-CE	5.90	109.64	100.20
1	A	33[A]	ILE	CB-CG1-CD1	5.89	130.38	113.90
1	A	33[B]	ILE	CB-CG1-CD1	5.89	130.38	113.90
1	A	34[A]	ARG	NE-CZ-NH1	5.88	123.24	120.30
1	A	34[B]	ARG	NE-CZ-NH1	5.88	123.24	120.30
1	A	35	TYR	CB-CG-CD2	-5.88	117.47	121.00
1	A	28	ARG	NE-CZ-NH2	5.83	123.22	120.30
1	A	35	TYR	CB-CG-CD1	5.83	124.50	121.00
1	A	42[A]	ARG	CA-CB-CG	5.82	126.21	113.40
1	A	42[B]	ARG	CA-CB-CG	5.82	126.21	113.40
1	B	97	GLU	OE1-CD-OE2	-5.80	116.34	123.30
1	B	30	ARG	NE-CZ-NH2	5.78	123.19	120.30
1	A	102	LEU	CA-CB-CG	5.74	128.49	115.30
1	B	34	ARG	CD-NE-CZ	5.66	131.52	123.60
1	A	36	PHE	CB-CG-CD2	-5.56	116.91	120.80
1	A	154	GLU	CB-CA-C	5.51	121.43	110.40
1	B	34	ARG	NE-CZ-NH1	5.51	123.05	120.30
1	B	34	ARG	NE-CZ-NH2	-5.50	117.55	120.30
1	B	108	ARG	NE-CZ-NH2	-5.50	117.55	120.30
1	A	120	GLU	OE1-CD-OE2	5.49	129.88	123.30

Continued on next page...

Continued from previous page...

Mol	Chain	Res	Type	Atoms	Z	Observed(°)	Ideal(°)
1	B	72	ARG	NE-CZ-NH1	5.46	123.03	120.30
1	B	67	ARG	NE-CZ-NH2	5.40	123.00	120.30
1	A	56	ARG	NE-CZ-NH1	5.40	123.00	120.30
1	A	132	ILE	O-C-N	5.39	131.32	122.70
1	B	45	LYS	CA-CB-CG	5.38	125.22	113.40
1	A	42[A]	ARG	NE-CZ-NH2	-5.34	117.63	120.30
1	A	42[B]	ARG	NE-CZ-NH2	-5.34	117.63	120.30
1	A	42[A]	ARG	CD-NE-CZ	5.21	130.89	123.60
1	A	42[B]	ARG	CD-NE-CZ	5.21	130.89	123.60
1	B	153	LEU	CB-CA-C	5.19	120.06	110.20
1	A	28	ARG	CG-CD-NE	5.19	122.69	111.80
1	A	130	LEU	O-C-N	5.13	130.91	122.70
1	A	147	THR	N-CA-CB	-5.12	100.58	110.30
1	A	185	ASN	O-C-N	5.10	130.86	122.70
1	A	147	THR	CA-CB-CG2	5.05	119.48	112.40
1	A	150	LYS	CA-CB-CG	5.00	124.41	113.40

There are no chirality outliers.

There are no planarity outliers.

5.2 Too-close contacts ⓘ

In the following table, the Non-H and H(model) columns list the number of non-hydrogen atoms and hydrogen atoms in the chain respectively. The H(added) column lists the number of hydrogen atoms added and optimized by MolProbity. The Clashes column lists the number of clashes within the asymmetric unit, whereas Symm-Clashes lists symmetry related clashes.

Mol	Chain	Non-H	H(model)	H(added)	Clashes	Symm-Clashes
1	A	1602	0	1623	15	0
1	B	1591	0	1615	19	0
2	A	48	0	26	1	0
2	B	48	0	26	0	0
3	A	21	0	14	1	0
3	B	21	0	14	0	0
4	A	12	0	13	1	0
4	B	12	0	13	1	0
5	A	175	0	0	3	0
5	B	192	0	0	3	0
All	All	3722	0	3344	34	0

The all-atom clashscore is defined as the number of clashes found per 1000 atoms (including

hydrogen atoms). The all-atom clashscore for this structure is 5.

All (34) close contacts within the same asymmetric unit are listed below, sorted by their clash magnitude.

Atom-1	Atom-2	Interatomic distance (Å)	Clash overlap (Å)
1:B:5[A]:ASN:OD1	5:B:283:HOH:O	1.78	1.01
1:B:124:ASN:HD22	1:B:126:LEU:H	1.30	0.79
1:B:28:ARG:HH11	1:B:30:ARG:HG2	1.48	0.79
1:B:176:ASP:H	1:B:185:ASN:HD21	1.33	0.72
1:A:176:ASP:H	1:A:185:ASN:HD21	1.42	0.67
1:B:83:ASN:ND2	1:B:94:SER:H	1.92	0.67
1:B:176:ASP:H	1:B:185:ASN:ND2	1.95	0.64
1:A:19:ILE:HG13	1:A:147:THR:HG22	1.82	0.62
1:B:137:HIS:HD2	1:B:139:SER:H	1.50	0.57
1:B:83:ASN:HD21	1:B:94:SER:H	1.51	0.57
1:A:41[B]:THR:HG21	5:A:446:HOH:O	2.06	0.56
1:A:176:ASP:H	1:A:185:ASN:ND2	2.03	0.55
1:B:137:HIS:CD2	1:B:139:SER:H	2.26	0.54
1:B:69:LEU:HD22	4:B:202:MES:H82	1.90	0.52
1:B:124:ASN:ND2	1:B:126:LEU:H	2.05	0.51
1:B:111[B]:ILE:HD13	1:B:121:LEU:HD13	1.95	0.47
1:A:64:GLN:HG2	1:A:65:LYS:HE3	1.97	0.47
1:A:65:LYS:CD	1:A:65:LYS:H	2.28	0.45
1:B:80:SER:HB2	5:B:337:HOH:O	2.16	0.45
1:B:14:LYS:HE2	1:B:134:GLU:HB3	1.98	0.44
1:B:149:LEU:HD22	1:B:151:PHE:CZ	2.51	0.44
1:B:164:LEU:HG	1:B:173[A]:LEU:HD21	1.99	0.43
1:A:25:MET:HA	1:A:26:PRO:HD3	1.76	0.43
1:B:19:ILE:HG13	1:B:147:THR:HG22	2.00	0.43
1:B:30:ARG:NH1	5:B:339:HOH:O	2.52	0.43
1:A:150:LYS:HG3	5:A:233:HOH:O	2.19	0.42
1:A:33[A]:ILE:HD13	3:A:194:MQ1:H9	2.00	0.42
1:A:28:ARG:HH21	1:A:28:ARG:HB3	1.84	0.42
1:A:57:LYS:NZ	2:A:193:NDP:O3B	2.49	0.42
1:A:137:HIS:CG	1:A:138:PRO:HD2	2.55	0.42
1:A:69:LEU:HD22	4:A:201:MES:H82	2.02	0.41
1:A:46:PRO:HB2	1:A:47:ASN:HD22	1.86	0.41
1:A:120:GLU:HG2	5:A:477:HOH:O	2.21	0.40

There are no symmetry-related clashes.

5.3 Torsion angles

5.3.1 Protein backbone

In the following table, the Percentiles column shows the percent Ramachandran outliers of the chain as a percentile score with respect to all X-ray entries followed by that with respect to entries of similar resolution.

The Analysed column shows the number of residues for which the backbone conformation was analysed, and the total number of residues.

Mol	Chain	Analysed	Favoured	Allowed	Outliers	Percentiles	
1	A	203/192 (106%)	198 (98%)	4 (2%)	1 (0%)	32	15
1	B	201/192 (105%)	197 (98%)	4 (2%)	0	100	100
All	All	404/384 (105%)	395 (98%)	8 (2%)	1 (0%)	44	31

All (1) Ramachandran outliers are listed below:

Mol	Chain	Res	Type
1	A	46	PRO

5.3.2 Protein sidechains

In the following table, the Percentiles column shows the percent sidechain outliers of the chain as a percentile score with respect to all X-ray entries followed by that with respect to entries of similar resolution.

The Analysed column shows the number of residues for which the sidechain conformation was analysed, and the total number of residues.

Mol	Chain	Analysed	Rotameric	Outliers	Percentiles	
1	A	188/177 (106%)	180 (96%)	8 (4%)	33	13
1	B	186/177 (105%)	182 (98%)	4 (2%)	57	38
All	All	374/354 (106%)	362 (97%)	12 (3%)	48	22

All (12) residues with a non-rotameric sidechain are listed below:

Mol	Chain	Res	Type
1	A	24	LYS
1	A	42[A]	ARG
1	A	42[B]	ARG
1	A	65	LYS
1	A	74	ASN

Continued on next page...

Continued from previous page...

Mol	Chain	Res	Type
1	A	102	LEU
1	A	145	MET
1	A	154	GLU
1	B	65[A]	LYS
1	B	65[B]	LYS
1	B	124	ASN
1	B	153	LEU

Some sidechains can be flipped to improve hydrogen bonding and reduce clashes. All (11) such sidechains are listed below:

Mol	Chain	Res	Type
1	A	47	ASN
1	A	159	GLN
1	A	185	ASN
1	B	83	ASN
1	B	89	ASN
1	B	101	ASN
1	B	123	ASN
1	B	124	ASN
1	B	137	HIS
1	B	159	GLN
1	B	185	ASN

5.3.3 RNA [i](#)

There are no RNA molecules in this entry.

5.4 Non-standard residues in protein, DNA, RNA chains [i](#)

There are no non-standard protein/DNA/RNA residues in this entry.

5.5 Carbohydrates [i](#)

There are no carbohydrates in this entry.

5.6 Ligand geometry [i](#)

6 ligands are modelled in this entry.

In the following table, the Counts columns list the number of bonds (or angles) for which Mogul statistics could be retrieved, the number of bonds (or angles) that are observed in the model and the number of bonds (or angles) that are defined in the Chemical Component Dictionary. The Link column lists molecule types, if any, to which the group is linked. The Z score for a bond length (or angle) is the number of standard deviations the observed value is removed from the expected value. A bond length (or angle) with $|Z| > 2$ is considered an outlier worth inspection. RMSZ is the root-mean-square of all Z scores of the bond lengths (or angles).

Mol	Type	Chain	Res	Link	Bond lengths			Bond angles		
					Counts	RMSZ	$\# Z > 2$	Counts	RMSZ	$\# Z > 2$
2	NDP	A	193	-	43,52,52	1.29	4 (9%)	49,80,80	1.51	7 (14%)
3	MQ1	A	194	-	23,23,23	1.26	2 (8%)	29,32,32	1.35	3 (10%)
4	MES	A	201	-	12,12,12	7.10	6 (50%)	14,16,16	4.09	6 (42%)
2	NDP	B	195	-	43,52,52	1.60	8 (18%)	49,80,80	1.54	9 (18%)
3	MQ1	B	196	-	23,23,23	1.31	1 (4%)	29,32,32	1.77	8 (27%)
4	MES	B	202	-	12,12,12	7.43	6 (50%)	14,16,16	3.71	7 (50%)

In the following table, the Chirals column lists the number of chiral outliers, the number of chiral centers analysed, the number of these observed in the model and the number defined in the Chemical Component Dictionary. Similar counts are reported in the Torsion and Rings columns. '-' means no outliers of that kind were identified.

Mol	Type	Chain	Res	Link	Chirals	Torsions	Rings
2	NDP	A	193	-	-	0/30/77/77	0/5/5/5
3	MQ1	A	194	-	-	0/6/6/6	0/3/3/3
4	MES	A	201	-	-	0/6/14/14	0/1/1/1
2	NDP	B	195	-	-	0/30/77/77	0/5/5/5
3	MQ1	B	196	-	-	0/6/6/6	0/3/3/3
4	MES	B	202	-	-	0/6/14/14	0/1/1/1

All (27) bond length outliers are listed below:

Mol	Chain	Res	Type	Atoms	Z	Observed(Å)	Ideal(Å)
4	B	202	MES	C8-S	-24.79	1.40	1.77
4	A	201	MES	C8-S	-23.53	1.42	1.77
2	B	195	NDP	C4N-C5N	-3.08	1.42	1.49
2	B	195	NDP	C5A-C4A	-2.71	1.34	1.40
2	B	195	NDP	C8A-N7A	-2.50	1.30	1.34
2	A	193	NDP	P2B-O2X	-2.34	1.45	1.54
2	A	193	NDP	C4N-C5N	-2.23	1.44	1.49
2	B	195	NDP	P2B-O2X	-2.20	1.45	1.54
2	B	195	NDP	PA-O1A	-2.14	1.42	1.50
2	B	195	NDP	C1D-N1N	2.01	1.52	1.46

Continued on next page...

Continued from previous page...

Mol	Chain	Res	Type	Atoms	Z	Observed(Å)	Ideal(Å)
4	B	202	MES	C5-N4	2.03	1.52	1.47
2	A	193	NDP	C3B-C4B	2.08	1.58	1.53
4	B	202	MES	C3-N4	2.24	1.53	1.47
4	A	201	MES	C3-N4	2.30	1.53	1.47
3	A	194	MQ1	C27-C26	2.38	1.43	1.38
4	B	202	MES	O1-C6	2.70	1.53	1.42
4	A	201	MES	C5-N4	2.75	1.54	1.47
4	A	201	MES	O1-C6	2.78	1.54	1.42
4	A	201	MES	O1-C2	2.99	1.54	1.42
4	B	202	MES	O1-C2	3.10	1.55	1.42
2	B	195	NDP	C6N-C5N	3.54	1.39	1.33
4	B	202	MES	C7-N4	3.68	1.55	1.47
2	A	193	NDP	P2B-O2B	3.89	1.66	1.59
4	A	201	MES	C7-N4	3.93	1.56	1.47
3	A	194	MQ1	C1-N6	4.19	1.44	1.37
3	B	196	MQ1	C1-N6	4.33	1.44	1.37
2	B	195	NDP	P2B-O2B	5.32	1.68	1.59

All (40) bond angle outliers are listed below:

Mol	Chain	Res	Type	Atoms	Z	Observed(°)	Ideal(°)
4	A	201	MES	O2S-S-C8	-6.30	101.38	106.79
2	B	195	NDP	C1D-N1N-C2N	-5.13	112.38	121.09
2	A	193	NDP	C3N-C2N-N1N	-4.95	115.90	123.08
2	A	193	NDP	C1D-N1N-C2N	-4.20	113.97	121.09
3	A	194	MQ1	N6-C5-N4	-4.19	121.34	127.46
3	B	196	MQ1	C2-C1-N6	-3.90	114.16	122.60
2	B	195	NDP	C3N-C2N-N1N	-3.70	117.71	123.08
2	B	195	NDP	N3A-C2A-N1A	-3.37	125.92	128.86
3	B	196	MQ1	N6-C5-N4	-3.26	122.70	127.46
3	B	196	MQ1	C8-C9-C12	-3.15	115.83	120.97
4	B	202	MES	O2S-S-O1S	-2.54	105.06	113.86
2	B	195	NDP	C3B-C2B-C1B	-2.48	97.90	102.75
2	A	193	NDP	C4D-O4D-C1D	-2.36	104.21	109.47
2	A	193	NDP	O2B-P2B-O1X	-2.29	100.28	109.26
3	B	196	MQ1	C23-C24-C25	-2.21	116.97	119.74
4	A	201	MES	O2S-S-O1S	-2.20	106.25	113.86
3	B	196	MQ1	N7-C3-N4	-2.20	109.82	116.59
3	A	194	MQ1	C2-C1-N6	-2.19	117.86	122.60
2	A	193	NDP	O5B-C5B-C4B	-2.18	101.26	109.00
2	B	195	NDP	O2B-P2B-O1X	-2.15	100.83	109.26
4	B	202	MES	O3S-S-O1S	-2.15	106.45	111.37

Continued on next page...

Continued from previous page...

Mol	Chain	Res	Type	Atoms	Z	Observed(°)	Ideal(°)
3	B	196	MQ1	C9-C12-C13	2.01	123.10	119.95
2	B	195	NDP	O2A-PA-O1A	2.07	123.02	112.28
2	B	195	NDP	O2X-P2B-O1X	2.09	118.67	110.50
2	B	195	NDP	C2A-N1A-C6A	2.14	122.52	118.77
4	B	202	MES	O1-C6-C5	2.18	116.71	111.83
3	B	196	MQ1	C8-C1-C2	2.41	124.28	119.51
2	A	193	NDP	O3X-P2B-O2X	2.62	118.20	107.61
4	A	201	MES	C5-N4-C3	2.78	115.16	108.87
3	B	196	MQ1	N14-C5-N4	2.86	121.81	117.24
4	B	202	MES	C5-N4-C3	2.97	115.60	108.87
2	A	193	NDP	N3A-C2A-N1A	2.99	131.46	128.86
2	B	195	NDP	C5A-C6A-N6A	3.11	126.81	120.47
3	A	194	MQ1	N14-C5-N4	3.20	122.35	117.24
4	A	201	MES	O3S-S-C8	3.80	110.73	106.06
4	A	201	MES	C6-C5-N4	5.13	117.30	110.11
4	B	202	MES	O2S-S-C8	5.90	111.86	106.79
4	B	202	MES	C6-C5-N4	7.03	119.95	110.11
4	B	202	MES	O3S-S-C8	8.74	116.81	106.06
4	A	201	MES	O1S-S-C8	11.49	116.66	106.79

There are no chirality outliers.

There are no torsion outliers.

There are no ring outliers.

4 monomers are involved in 4 short contacts:

Mol	Chain	Res	Type	Clashes	Symm-Clashes
2	A	193	NDP	1	0
3	A	194	MQ1	1	0
4	A	201	MES	1	0
4	B	202	MES	1	0

5.7 Other polymers ⓘ

There are no such residues in this entry.

5.8 Polymer linkage issues ⓘ

There are no chain breaks in this entry.

6 Fit of model and data [i](#)

6.1 Protein, DNA and RNA chains [i](#)

In the following table, the column labelled ‘#RSRZ> 2’ contains the number (and percentage) of RSRZ outliers, followed by percent RSRZ outliers for the chain as percentile scores relative to all X-ray entries and entries of similar resolution. The OWAB column contains the minimum, median, 95th percentile and maximum values of the occupancy-weighted average B-factor per residue. The column labelled ‘Q< 0.9’ lists the number of (and percentage) of residues with an average occupancy less than 0.9.

Mol	Chain	Analysed	<RSRZ>	#RSRZ>2	OWAB(Å ²)	Q<0.9
1	A	192/192 (100%)	-0.51	1 (0%) 90 93	7, 16, 35, 50	8 (4%)
1	B	192/192 (100%)	-0.54	1 (0%) 90 93	6, 14, 31, 44	9 (4%)
All	All	384/384 (100%)	-0.52	2 (0%) 90 93	6, 15, 33, 50	17 (4%)

All (2) RSRZ outliers are listed below:

Mol	Chain	Res	Type	RSRZ
1	A	46	PRO	4.0
1	B	142[A]	SER	2.1

6.2 Non-standard residues in protein, DNA, RNA chains [i](#)

There are no non-standard protein/DNA/RNA residues in this entry.

6.3 Carbohydrates [i](#)

There are no carbohydrates in this entry.

6.4 Ligands [i](#)

In the following table, the Atoms column lists the number of modelled atoms in the group and the number defined in the chemical component dictionary. LLDF column lists the quality of electron density of the group with respect to its neighbouring residues in protein, DNA or RNA chains. The B-factors column lists the minimum, median, 95th percentile and maximum values of B factors of atoms in the group. The column labelled ‘Q< 0.9’ lists the number of atoms with occupancy less than 0.9.

Mol	Type	Chain	Res	Atoms	RSCC	RSR	LLDF	B-factors(Å ²)	Q<0.9
4	MES	B	202	12/12	0.95	0.21	12.54	19,25,39,49	9

Continued on next page...

Continued from previous page...

Mol	Type	Chain	Res	Atoms	RSCC	RSR	LLDF	B-factors(\AA^2)	Q<0.9
4	MES	A	201	12/12	0.98	0.07	0.92	24,40,42,44	3
3	MQ1	A	194	21/21	0.98	0.08	-0.28	6,10,15,16	0
3	MQ1	B	196	21/21	0.98	0.06	-0.47	7,12,18,20	0
2	NDP	B	195	48/48	0.98	0.05	-0.63	6,11,17,25	0
2	NDP	A	193	48/48	0.99	0.05	-1.23	9,14,20,23	0

6.5 Other polymers [i](#)

There are no such residues in this entry.