



Full wwPDB X-ray Structure Validation Report ⓘ

Feb 14, 2017 – 04:17 am GMT

PDB ID : 1M9K
Title : Human Endothelial Nitric Oxide Synthase with 7-Nitroindazole Bound
Authors : Rosenfeld, R.J.; Garcin, E.D.; Panda, K.; Andersson, G.; Aberg, A.; Wallace, A.V.; Stuehr, D.J.; Tainer, J.A.; Getzoff, E.D.
Deposited on : 2002-07-29
Resolution : 2.01 Å(reported)

This is a Full wwPDB X-ray Structure Validation Report for a publicly released PDB entry.

We welcome your comments at validation@mail.wwpdb.org

A user guide is available at

<http://wwpdb.org/validation/2016/XrayValidationReportHelp>

with specific help available everywhere you see the ⓘ symbol.

The following versions of software and data (see [references ⓘ](#)) were used in the production of this report:

MolProbity : 4.02b-467
Mogul : 1.7.2 (RC1), CSD as538be (2017)
Xtriage (Phenix) : **NOT EXECUTED**
EDS : **NOT EXECUTED**
Percentile statistics : 20161228.v01 (using entries in the PDB archive December 28th 2016)
Ideal geometry (proteins) : Engh & Huber (2001)
Ideal geometry (DNA, RNA) : Parkinson et al. (1996)
Validation Pipeline (wwPDB-VP) : recalc28949

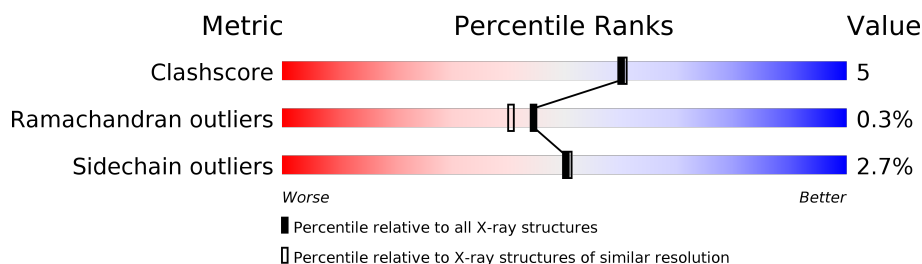
1 Overall quality at a glance

The following experimental techniques were used to determine the structure:

X-RAY DIFFRACTION

The reported resolution of this entry is 2.01 Å.

Percentile scores (ranging between 0-100) for global validation metrics of the entry are shown in the following graphic. The table shows the number of entries on which the scores are based.



Metric	Whole archive (#Entries)	Similar resolution (#Entries, resolution range(Å))
Clashscore	112137	7775 (2.00-2.00)
Ramachandran outliers	110173	7679 (2.00-2.00)
Sidechain outliers	110143	7678 (2.00-2.00)

The table below summarises the geometric issues observed across the polymeric chains and their fit to the electron density. The red, orange, yellow and green segments on the lower bar indicate the fraction of residues that contain outliers for ≥ 3 , 2, 1 and 0 types of geometric quality criteria. A grey segment represents the fraction of residues that are not modelled. The numeric value for each fraction is indicated below the corresponding segment, with a dot representing fractions $\leq 5\%$. The upper red bar (where present) indicates the fraction of residues that have poor fit to the electron density. The numeric value is given above the bar.

Note EDS was not executed.

Mol	Chain	Length	Quality of chain
1	A	415	
1	B	415	

2 Entry composition [i](#)

There are 5 unique types of molecules in this entry. The entry contains 6915 atoms, of which 0 are hydrogens and 0 are deuteriums.

In the tables below, the ZeroOcc column contains the number of atoms modelled with zero occupancy, the AltConf column contains the number of residues with at least one atom in alternate conformation and the Trace column contains the number of residues modelled with at most 2 atoms.

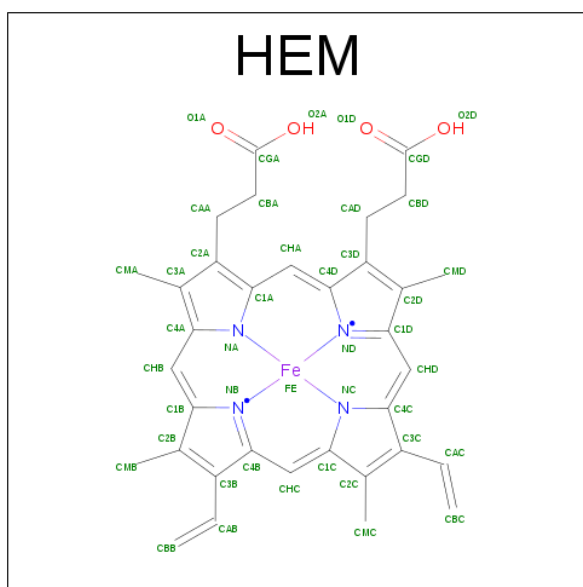
- Molecule 1 is a protein called endothelial Nitric-oxide synthase.

Mol	Chain	Residues	Atoms					ZeroOcc	AltConf	Trace
1	A	400	Total	C	N	O	S	0	0	0
			3179	2028	559	576	16			
1	B	401	Total	C	N	O	S	0	0	0
			3189	2034	559	580	16			

- Molecule 2 is ZINC ION (three-letter code: ZN) (formula: Zn).

Mol	Chain	Residues	Atoms		ZeroOcc	AltConf
2	A	1	Total	Zn	0	0
			1	1		

- Molecule 3 is PROTOPORPHYRIN IX CONTAINING FE (three-letter code: HEM) (formula: $C_{34}H_{32}FeN_4O_4$).



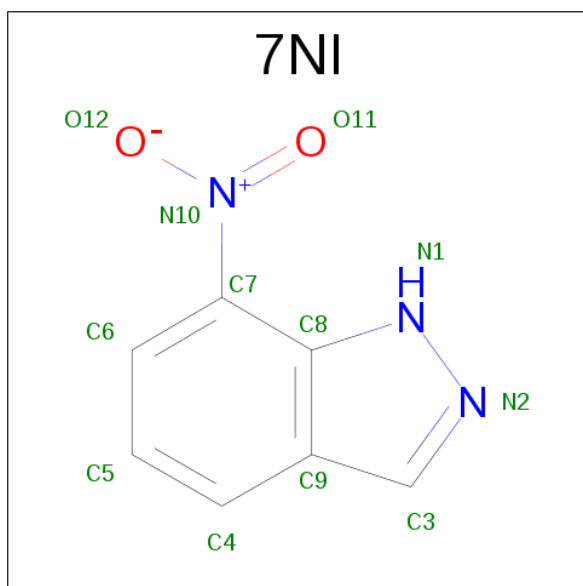
Mol	Chain	Residues	Atoms					ZeroOcc	AltConf
3	A	1	Total	C	Fe	N	O	0	0
			43	34	1	4	4		

Continued on next page...

Continued from previous page...

Mol	Chain	Residues	Atoms					ZeroOcc	AltConf
3	B	1	Total	C	Fe	N	O	0	0
			43	34	1	4	4		

- Molecule 4 is 7-NITROINDAZOLE (three-letter code: 7NI) (formula: $C_7H_5N_3O_2$).

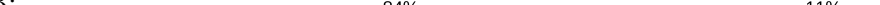


Mol	Chain	Residues	Atoms				ZeroOcc	AltConf
4	A	1	Total	C	N	O	0	1
			24	14	6	4		
4	B	1	Total	C	N	O	0	1
			24	14	6	4		

- Molecule 5 is water.

Mol	Chain	Residues	Atoms		ZeroOcc	AltConf
5	A	208	Total	O	0	0
			208	208		
5	B	204	Total	O	0	0
			204	204		

Note EDS was not executed.

- Chain B:  84% 11% ..
- | | | | | | | | | | | | | | | | | | | | | | | | | | | | | | | | | | | | | | | | | | |
|------|------|------|------|------|------|------|------|------|------|------|------|------|------|------|------|------|------|------|------|------|------|------|------|------|------|------|------|------|------|------|------|------|------|------|------|------|------|------|------|------|------|
| K67 | P69 | N73 | Q90 | D91 | R97 | R98 | L103 | Y104 | F105 | PRO | ARG | LYS | LEU | GLN | GLY | ARG | PRO | PRO | SER | PRO | GLY | PRO | PRO | ALA | P120 | L124 | R128 | Y135 | Q148 | R149 | L150 | E154 | E169 | Q176 | R179 | M207 | K216 | T219 | L224 | F231 | W244 |
| R250 | R255 | Q256 | Q257 | D258 | P290 | L291 | L292 | L302 | F303 | L304 | L309 | Y331 | M358 | T364 | C368 | D369 | P370 | L376 | S453 | L456 | Q462 | E463 | F468 | L469 | S470 | P471 | R474 | Y475 | D478 | P479 | W480 | K481 | | | | | | | | | |

4 Data and refinement statistics

Xtriage (Phenix) and EDS were not executed - this section is therefore incomplete.

Property	Value	Source
Space group	P 21 21 21	Depositor
Cell constants a, b, c, α , β , γ	69.79Å 91.57Å 156.10Å 90.00° 90.00° 90.00°	Depositor
Resolution (Å)	19.80 – 2.01	Depositor
% Data completeness (in resolution range)	98.6 (19.80-2.01)	Depositor
R_{merge}	0.04	Depositor
R_{sym}	0.04	Depositor
Refinement program	CNS 1.0	Depositor
R, R_{free}	0.196 , 0.224	Depositor
Estimated twinning fraction	No twinning to report.	Xtriage
Total number of atoms	6915	wwPDB-VP
Average B, all atoms (Å ²)	33.0	wwPDB-VP

5 Model quality

5.1 Standard geometry

Bond lengths and bond angles in the following residue types are not validated in this section: HEM, ZN, 7NI

The Z score for a bond length (or angle) is the number of standard deviations the observed value is removed from the expected value. A bond length (or angle) with $|Z| > 5$ is considered an outlier worth inspection. RMSZ is the root-mean-square of all Z scores of the bond lengths (or angles).

Mol	Chain	Bond lengths		Bond angles	
		RMSZ	$\# Z > 5$	RMSZ	$\# Z > 5$
1	A	0.41	0/3270	0.64	2/4457 (0.0%)
1	B	0.42	0/3280	0.64	1/4470 (0.0%)
All	All	0.41	0/6550	0.64	3/8927 (0.0%)

Chiral center outliers are detected by calculating the chiral volume of a chiral center and verifying if the center is modelled as a planar moiety or with the opposite hand. A planarity outlier is detected by checking planarity of atoms in a peptide group, atoms in a mainchain group or atoms of a sidechain that are expected to be planar.

Mol	Chain	#Chirality outliers	#Planarity outliers
1	B	0	1

There are no bond length outliers.

All (3) bond angle outliers are listed below:

Mol	Chain	Res	Type	Atoms	Z	Observed($^{\circ}$)	Ideal($^{\circ}$)
1	A	149	ARG	NE-CZ-NH1	5.40	123.00	120.30
1	B	358	MET	N-CA-C	-5.26	96.79	111.00
1	A	358	MET	N-CA-C	-5.15	97.10	111.00

There are no chirality outliers.

All (1) planarity outliers are listed below:

Mol	Chain	Res	Type	Group
1	B	475	TYR	Sidechain

5.2 Too-close contacts ⓘ

In the following table, the Non-H and H(model) columns list the number of non-hydrogen atoms and hydrogen atoms in the chain respectively. The H(added) column lists the number of hydrogen atoms added and optimized by MolProbity. The Clashes column lists the number of clashes within the asymmetric unit, whereas Symm-Clashes lists symmetry related clashes.

Mol	Chain	Non-H	H(model)	H(added)	Clashes	Symm-Clashes
1	A	3179	0	3077	29	0
1	B	3189	0	3087	40	0
2	A	1	0	0	0	0
3	A	43	0	30	0	0
3	B	43	0	30	0	0
4	A	24	0	10	0	0
4	B	24	0	10	0	0
5	A	208	0	0	3	0
5	B	204	0	0	3	0
All	All	6915	0	6244	67	0

The all-atom clashscore is defined as the number of clashes found per 1000 atoms (including hydrogen atoms). The all-atom clashscore for this structure is 5.

All (67) close contacts within the same asymmetric unit are listed below, sorted by their clash magnitude.

Atom-1	Atom-2	Interatomic distance (Å)	Clash overlap (Å)
1:B:292:LEU:HD13	1:B:302:LEU:HD13	1.51	0.91
1:B:250:ARG:HH11	1:B:250:ARG:HG2	1.36	0.91
1:A:250:ARG:HG3	1:A:250:ARG:HH11	1.41	0.83
1:B:250:ARG:HH11	1:B:250:ARG:CG	1.94	0.81
1:B:453:SER:HB3	1:B:456:LEU:HD12	1.65	0.79
1:A:247:GLN:HB2	1:A:250:ARG:HD3	1.69	0.75
1:B:124:LEU:HD11	1:B:154:GLU:HG2	1.71	0.72
1:B:250:ARG:NH1	1:B:250:ARG:HG2	1.96	0.70
1:A:149:ARG:HD2	1:A:169:GLU:OE1	1.92	0.70
1:A:250:ARG:NH1	1:A:250:ARG:HG3	2.11	0.65
1:B:216:LYS:HG3	1:B:309:LEU:HD22	1.80	0.63
1:B:250:ARG:HA	1:B:250:ARG:HH11	1.62	0.63
1:A:67:LYS:HA	1:A:67:LYS:HE2	1.79	0.62
1:B:73:ASN:HD22	1:B:462:GLN:NE2	1.98	0.61
1:B:90:GLN:HB3	1:B:468:PHE:CD2	2.36	0.60
1:A:453:SER:HB3	1:A:456:LEU:HD12	1.86	0.57
1:B:176:GLN:HE22	1:B:179:ARG:HH11	1.52	0.57
1:A:368:CYS:SG	1:A:376:LEU:HD13	2.45	0.56

Continued on next page...

Continued from previous page...

Atom-1	Atom-2	Interatomic distance (Å)	Clash overlap (Å)
1:B:368:CYS:SG	1:B:376:LEU:HD13	2.46	0.56
1:A:176:GLN:HE22	1:A:179:ARG:HH11	1.54	0.55
1:B:73:ASN:HD22	1:B:462:GLN:HE21	1.54	0.55
1:A:376:LEU:HB2	5:A:946:HOH:O	2.06	0.54
1:A:246:SER:OG	1:A:250:ARG:NH1	2.40	0.54
1:A:235:CYS:HB3	1:A:238:ARG:HE	1.73	0.54
1:B:67:LYS:HE3	1:B:68:PHE:CZ	2.44	0.53
1:B:376:LEU:HB2	5:B:947:HOH:O	2.09	0.52
1:B:474:ARG:HD2	5:B:1074:HOH:O	2.08	0.52
1:A:90:GLN:HB3	1:A:468:PHE:CD2	2.45	0.52
1:B:250:ARG:NH1	1:B:331:TYR:OH	2.44	0.51
1:B:255:ARG:HG3	5:B:1024:HOH:O	2.11	0.50
1:B:135:TYR:CE1	1:B:149:ARG:HG3	2.46	0.50
1:A:156:GLU:HG3	5:A:1083:HOH:O	2.11	0.50
1:A:124:LEU:HD23	1:A:128:ARG:NH2	2.27	0.49
1:A:183:ARG:HD3	1:A:447:TRP:CD2	2.48	0.49
1:B:292:LEU:HD13	1:B:302:LEU:CD1	2.34	0.48
1:B:250:ARG:NH1	1:B:250:ARG:CG	2.61	0.48
1:B:149:ARG:HD2	1:B:169:GLU:OE1	2.14	0.47
1:B:250:ARG:HA	1:B:250:ARG:NH1	2.27	0.47
1:B:257:GLN:O	1:B:258:ASP:HB3	2.14	0.47
1:B:244:TRP:HB2	1:B:292:LEU:HB3	1.96	0.46
1:B:150:LEU:O	1:B:154:GLU:HG3	2.16	0.46
1:B:480:TRP:HE1	1:B:481:LYS:HE3	1.80	0.46
1:A:364:THR:HG21	1:A:452:ILE:HG23	1.98	0.46
1:B:135:TYR:HE1	1:B:149:ARG:HG3	1.81	0.46
1:A:238:ARG:NH2	5:A:1086:HOH:O	2.49	0.45
1:A:470:SER:HA	1:A:471:PRO:C	2.38	0.44
1:A:257:GLN:NE2	1:A:258:ASP:N	2.66	0.44
1:B:478:ASP:HB2	1:B:481:LYS:HD2	2.00	0.44
1:A:247:GLN:HB2	1:A:250:ARG:CD	2.45	0.44
1:B:290:PRO:HB3	1:B:304:LEU:CD2	2.48	0.43
1:B:219:THR:HA	1:B:224:LEU:HD22	2.00	0.43
1:A:75:GLU:HG3	1:B:370:PRO:HG2	1.99	0.43
1:B:364:THR:O	1:B:368:CYS:HB2	2.18	0.43
1:A:257:GLN:NE2	1:A:258:ASP:H	2.17	0.42
1:B:124:LEU:O	1:B:128:ARG:HG3	2.19	0.42
1:B:250:ARG:CB	1:B:250:ARG:HH11	2.31	0.42
1:B:90:GLN:HG2	1:B:91:ASP:N	2.34	0.42
1:A:364:THR:O	1:A:368:CYS:HB2	2.20	0.42
1:A:150:LEU:O	1:A:153:VAL:HG22	2.19	0.41

Continued on next page...

Continued from previous page...

Atom-1	Atom-2	Interatomic distance (Å)	Clash overlap (Å)
1:A:103:LEU:HD22	1:B:463:GLU:HB3	2.01	0.41
1:B:207:MET:HG3	1:B:231:PHE:CE2	2.55	0.41
1:A:257:GLN:HE21	1:A:258:ASP:N	2.19	0.41
1:A:216:LYS:HG2	1:A:309:LEU:HD22	2.02	0.41
1:B:250:ARG:CA	1:B:250:ARG:HH11	2.29	0.41
1:A:247:GLN:CB	1:A:250:ARG:HD3	2.47	0.40
1:A:73:ASN:HD22	1:A:462:GLN:NE2	2.19	0.40
1:B:470:SER:HA	1:B:471:PRO:C	2.42	0.40

There are no symmetry-related clashes.

5.3 Torsion angles [i](#)

5.3.1 Protein backbone [i](#)

In the following table, the Percentiles column shows the percent Ramachandran outliers of the chain as a percentile score with respect to all X-ray entries followed by that with respect to entries of similar resolution.

The Analysed column shows the number of residues for which the backbone conformation was analysed, and the total number of residues.

Mol	Chain	Analysed	Favoured	Allowed	Outliers	Percentiles	
1	A	396/415 (95%)	386 (98%)	9 (2%)	1 (0%)	44	40
1	B	397/415 (96%)	388 (98%)	8 (2%)	1 (0%)	44	40
All	All	793/830 (96%)	774 (98%)	17 (2%)	2 (0%)	44	40

All (2) Ramachandran outliers are listed below:

Mol	Chain	Res	Type
1	A	258	ASP
1	B	258	ASP

5.3.2 Protein sidechains [i](#)

In the following table, the Percentiles column shows the percent sidechain outliers of the chain as a percentile score with respect to all X-ray entries followed by that with respect to entries of similar resolution.

The Analysed column shows the number of residues for which the sidechain conformation was

analysed, and the total number of residues.

Mol	Chain	Analysed	Rotameric	Outliers	Percentiles	
1	A	336/352 (96%)	327 (97%)	9 (3%)	50	51
1	B	338/352 (96%)	329 (97%)	9 (3%)	50	51
All	All	674/704 (96%)	656 (97%)	18 (3%)	50	51

All (18) residues with a non-rotameric sidechain are listed below:

Mol	Chain	Res	Type
1	A	67	LYS
1	A	87	GLN
1	A	98	ARG
1	A	148	GLN
1	A	149	ARG
1	A	224	LEU
1	A	255	ARG
1	A	262	ARG
1	A	417	ILE
1	B	97	ARG
1	B	98	ARG
1	B	103	LEU
1	B	124	LEU
1	B	148	GLN
1	B	149	ARG
1	B	250	ARG
1	B	302	LEU
1	B	376	LEU

Some sidechains can be flipped to improve hydrogen bonding and reduce clashes. All (11) such sidechains are listed below:

Mol	Chain	Res	Type
1	A	133	GLN
1	A	176	GLN
1	A	233	GLN
1	A	257	GLN
1	A	462	GLN
1	A	466	ASN
1	B	126	GLN
1	B	133	GLN
1	B	176	GLN
1	B	462	GLN
1	B	466	ASN

5.3.3 RNA ⓘ

There are no RNA molecules in this entry.

5.4 Non-standard residues in protein, DNA, RNA chains ⓘ

There are no non-standard protein/DNA/RNA residues in this entry.

5.5 Carbohydrates ⓘ

There are no carbohydrates in this entry.

5.6 Ligand geometry ⓘ

Of 7 ligands modelled in this entry, 1 is monoatomic - leaving 6 for Mogul analysis.

In the following table, the Counts columns list the number of bonds (or angles) for which Mogul statistics could be retrieved, the number of bonds (or angles) that are observed in the model and the number of bonds (or angles) that are defined in the chemical component dictionary. The Link column lists molecule types, if any, to which the group is linked. The Z score for a bond length (or angle) is the number of standard deviations the observed value is removed from the expected value. A bond length (or angle) with $|Z| > 2$ is considered an outlier worth inspection. RMSZ is the root-mean-square of all Z scores of the bond lengths (or angles).

Mol	Type	Chain	Res	Link	Bond lengths			Bond angles		
					Counts	RMSZ	$\# Z > 2$	Counts	RMSZ	$\# Z > 2$
3	HEM	A	901	1	28,50,50	1.44	4 (14%)	17,82,82	1.39	2 (11%)
4	7NI	A	906[A]	-	11,13,13	2.77	6 (54%)	5,18,18	1.96	2 (40%)
4	7NI	A	906[B]	-	11,13,13	2.73	5 (45%)	5,18,18	1.90	2 (40%)
3	HEM	B	901	1	28,50,50	1.26	3 (10%)	17,82,82	1.51	3 (17%)
4	7NI	B	907[A]	-	11,13,13	2.70	5 (45%)	5,18,18	1.97	2 (40%)
4	7NI	B	907[B]	-	11,13,13	2.95	4 (36%)	5,18,18	2.27	2 (40%)

In the following table, the Chirals column lists the number of chiral outliers, the number of chiral centers analysed, the number of these observed in the model and the number defined in the chemical component dictionary. Similar counts are reported in the Torsion and Rings columns. '-' means no outliers of that kind were identified.

Mol	Type	Chain	Res	Link	Chirals	Torsions	Rings
3	HEM	A	901	1	-	0/6/54/54	0/0/8/8
4	7NI	A	906[A]	-	-	0/2/4/4	0/2/2/2
4	7NI	A	906[B]	-	-	0/2/4/4	0/2/2/2

Continued on next page...

Continued from previous page...

Mol	Type	Chain	Res	Link	Chirals	Torsions	Rings
3	HEM	B	901	1	-	0/6/54/54	0/0/8/8
4	7NI	B	907[A]	-	-	0/2/4/4	0/2/2/2
4	7NI	B	907[B]	-	-	0/2/4/4	0/2/2/2

All (27) bond length outliers are listed below:

Mol	Chain	Res	Type	Atoms	Z	Observed(Å)	Ideal(Å)
4	A	906[A]	7NI	C4-C9	-3.48	1.33	1.41
4	A	906[B]	7NI	C4-C9	-3.46	1.33	1.41
4	B	907[A]	7NI	C4-C9	-3.36	1.33	1.41
3	A	901	HEM	C3B-C2B	-3.33	1.36	1.40
3	B	901	HEM	C3B-CAB	-2.55	1.42	1.47
3	A	901	HEM	C3B-CAB	-2.44	1.43	1.47
4	A	906[A]	7NI	C7-C8	-2.41	1.34	1.42
4	B	907[B]	7NI	C7-C8	-2.36	1.34	1.42
4	A	906[B]	7NI	C7-C8	-2.34	1.34	1.42
4	B	907[A]	7NI	C7-C8	-2.28	1.34	1.42
4	A	906[A]	7NI	N2-N1	-2.03	1.33	1.37
3	B	901	HEM	C3B-C2B	-2.02	1.37	1.40
3	A	901	HEM	C1D-ND	2.08	1.40	1.36
3	B	901	HEM	C1D-ND	2.22	1.40	1.36
4	B	907[B]	7NI	C9-C8	2.42	1.46	1.43
4	A	906[B]	7NI	C9-C8	2.51	1.46	1.43
3	A	901	HEM	C4C-NC	2.55	1.39	1.36
4	B	907[A]	7NI	C3-C9	2.64	1.46	1.40
4	A	906[A]	7NI	C9-C8	2.65	1.46	1.43
4	A	906[B]	7NI	C3-C9	2.74	1.46	1.40
4	B	907[A]	7NI	C9-C8	2.76	1.46	1.43
4	A	906[A]	7NI	C3-C9	2.95	1.47	1.40
4	B	907[B]	7NI	C3-C9	3.53	1.48	1.40
4	A	906[B]	7NI	C5-C4	6.49	1.51	1.36
4	B	907[A]	7NI	C5-C4	6.50	1.51	1.36
4	A	906[A]	7NI	C5-C4	6.53	1.51	1.36
4	B	907[B]	7NI	C5-C4	7.89	1.55	1.36

All (13) bond angle outliers are listed below:

Mol	Chain	Res	Type	Atoms	Z	Observed(°)	Ideal(°)
4	B	907[B]	7NI	C5-C4-C9	-3.91	114.31	120.44
3	B	901	HEM	CBD-CAD-C3D	-3.42	105.95	112.47
4	A	906[A]	7NI	C5-C4-C9	-3.28	115.29	120.44
4	B	907[A]	7NI	C5-C4-C9	-3.20	115.43	120.44

Continued on next page...

Continued from previous page...

Mol	Chain	Res	Type	Atoms	Z	Observed(°)	Ideal(°)
4	A	906[B]	7NI	C5-C4-C9	-3.17	115.47	120.44
4	B	907[B]	7NI	C9-C3-N2	-3.10	103.48	111.35
3	B	901	HEM	C1D-C2D-C3D	-3.08	104.85	107.00
4	B	907[A]	7NI	C9-C3-N2	-2.83	104.17	111.35
4	A	906[A]	7NI	C9-C3-N2	-2.71	104.46	111.35
4	A	906[B]	7NI	C9-C3-N2	-2.65	104.62	111.35
3	A	901	HEM	CMA-C3A-C4A	-2.51	124.60	128.46
3	A	901	HEM	CBD-CAD-C3D	-2.45	107.79	112.47
3	B	901	HEM	CMC-C2C-C3C	2.31	129.17	124.89

There are no chirality outliers.

There are no torsion outliers.

There are no ring outliers.

No monomer is involved in short contacts.

5.7 Other polymers [i](#)

There are no such residues in this entry.

5.8 Polymer linkage issues [i](#)

There are no chain breaks in this entry.

6 Fit of model and data

6.1 Protein, DNA and RNA chains

EDS was not executed - this section is therefore empty.

6.2 Non-standard residues in protein, DNA, RNA chains

EDS was not executed - this section is therefore empty.

6.3 Carbohydrates

EDS was not executed - this section is therefore empty.

6.4 Ligands

EDS was not executed - this section is therefore empty.

6.5 Other polymers

EDS was not executed - this section is therefore empty.