



wwPDB X-ray Structure Validation Summary Report ⓘ

Feb 14, 2017 – 11:07 am GMT

PDB ID : 3MCA
Title : Structure of the Dom34-Hbs1 Complex and implications for its role in No-Go decay
Authors : Chen, L.; Song, H.
Deposited on : 2010-03-28
Resolution : 2.74 Å(reported)

This is a wwPDB X-ray Structure Validation Summary Report for a publicly released PDB entry.

We welcome your comments at validation@mail.wwpdb.org

A user guide is available at

<http://wwpdb.org/validation/2016/XrayValidationReportHelp>

with specific help available everywhere you see the ⓘ symbol.

The following versions of software and data (see [references ⓘ](#)) were used in the production of this report:

MolProbity : 4.02b-467
Xtriage (Phenix) : 1.9-1692
EDS : trunk28620
Percentile statistics : 20161228.v01 (using entries in the PDB archive December 28th 2016)
Refmac : 5.8.0135
CCP4 : 6.5.0
Ideal geometry (proteins) : Engh & Huber (2001)
Ideal geometry (DNA, RNA) : Parkinson et al. (1996)
Validation Pipeline (wwPDB-VP) : recalc28949

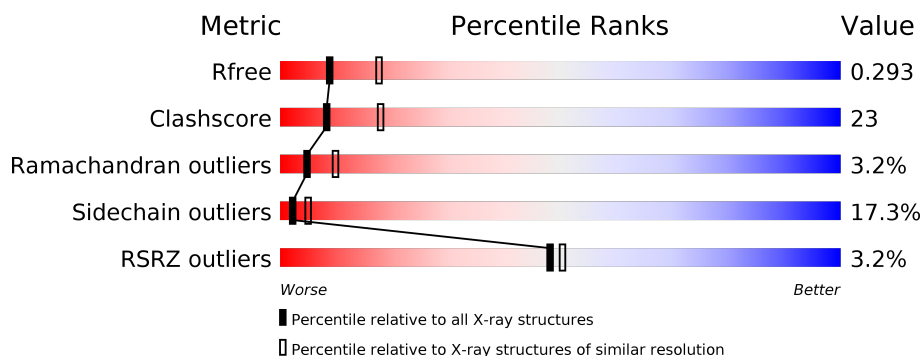
1 Overall quality at a glance

The following experimental techniques were used to determine the structure:

X-RAY DIFFRACTION

The reported resolution of this entry is 2.74 Å.

Percentile scores (ranging between 0-100) for global validation metrics of the entry are shown in the following graphic. The table shows the number of entries on which the scores are based.



Metric	Whole archive (#Entries)	Similar resolution (#Entries, resolution range(Å))
R_{free}	100719	3342 (2.78-2.70)
Clashscore	112137	3731 (2.78-2.70)
Ramachandran outliers	110173	3670 (2.78-2.70)
Sidechain outliers	110143	3671 (2.78-2.70)
RSRZ outliers	101464	3362 (2.78-2.70)

The table below summarises the geometric issues observed across the polymeric chains and their fit to the electron density. The red, orange, yellow and green segments on the lower bar indicate the fraction of residues that contain outliers for ≥ 3 , 2, 1 and 0 types of geometric quality criteria. A grey segment represents the fraction of residues that are not modelled. The numeric value for each fraction is indicated below the corresponding segment, with a dot representing fractions $\leq 5\%$. The upper red bar (where present) indicates the fraction of residues that have poor fit to the electron density. The numeric value is given above the bar.

Mol	Chain	Length	Quality of chain
1	A	592	<div> <div style="width: 100%; height: 10px; background: linear-gradient(to right, red 0%, red 1%, orange 1%, orange 19%, yellow 19%, yellow 7%, green 7%, green 36%, grey 36%);"></div> <div style="display: flex; justify-content: space-between; width: 100%;"> % 38% 19% 7% 36% </div> </div>
2	B	390	<div> <div style="width: 100%; height: 10px; background: linear-gradient(to right, red 0%, red 4%, orange 4%, orange 32%, yellow 32%, yellow 7%, green 7%, green 13%, grey 13%);"></div> <div style="display: flex; justify-content: space-between; width: 100%;"> 4% 48% 32% 7% 13% </div> </div>

2 Entry composition

There are 3 unique types of molecules in this entry. The entry contains 5853 atoms, of which 0 are hydrogens and 0 are deuteriums.

In the tables below, the ZeroOcc column contains the number of atoms modelled with zero occupancy, the AltConf column contains the number of residues with at least one atom in alternate conformation and the Trace column contains the number of residues modelled with at most 2 atoms.

- Molecule 1 is a protein called Elongation factor 1 alpha-like protein.

Mol	Chain	Residues	Atoms					ZeroOcc	AltConf	Trace
1	A	377	Total	C	N	O	S	0	0	0
			2941	1860	520	553	8			

- Molecule 2 is a protein called Protein dom34.

Mol	Chain	Residues	Atoms					ZeroOcc	AltConf	Trace
2	B	341	Total	C	N	O	S	0	0	0
			2744	1753	459	522	10			

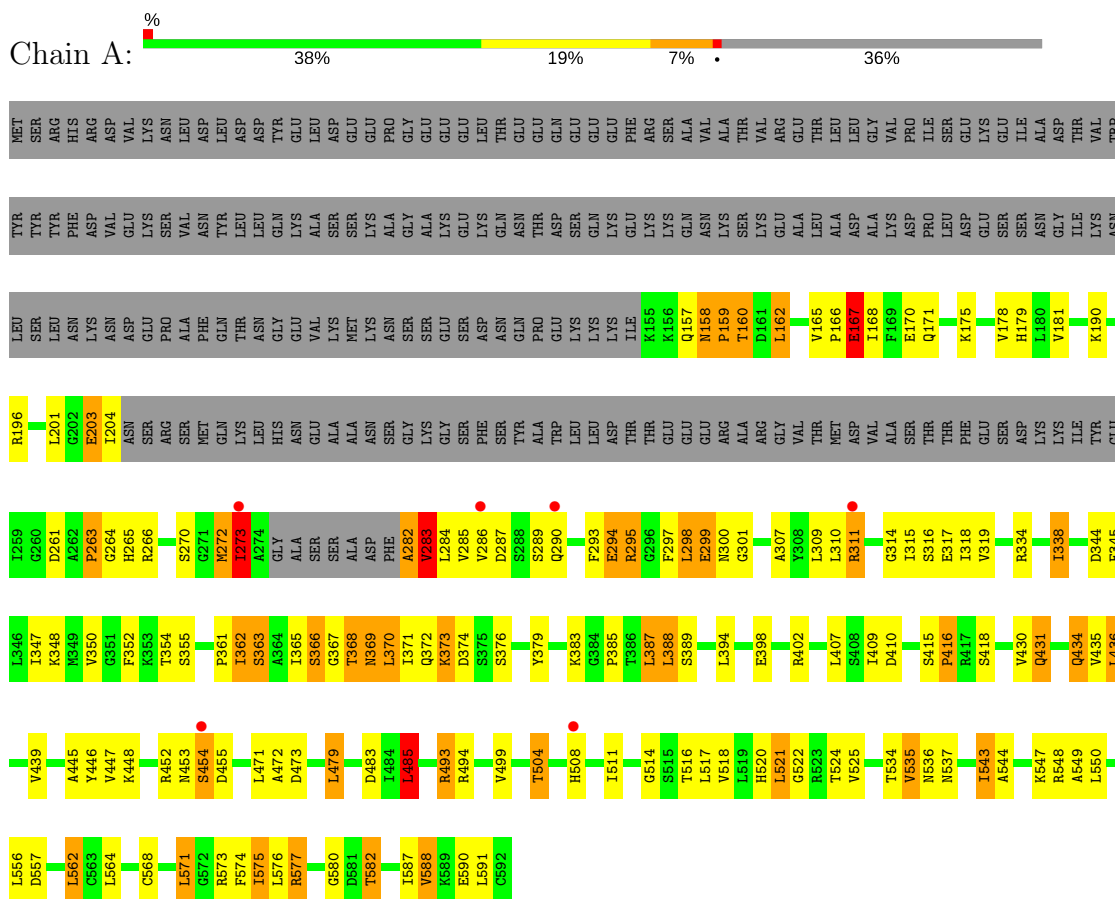
- Molecule 3 is water.

Mol	Chain	Residues	Atoms		ZeroOcc	AltConf
3	A	89	Total	O	0	0
			89	89		
3	B	79	Total	O	0	0
			79	79		

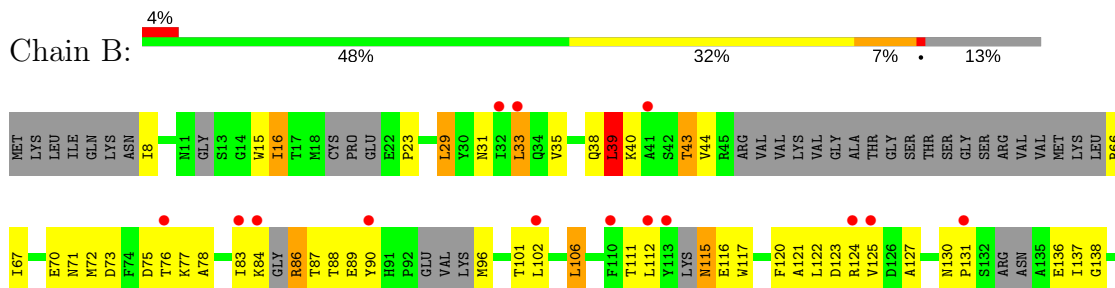
3 Residue-property plots [i](#)

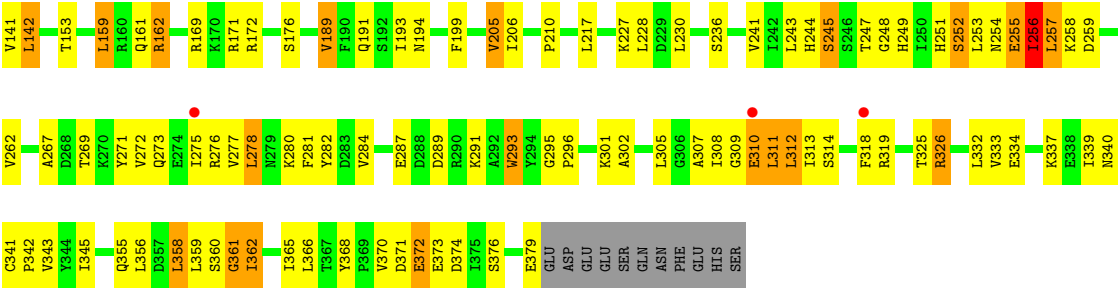
These plots are drawn for all protein, RNA and DNA chains in the entry. The first graphic for a chain summarises the proportions of the various outlier classes displayed in the second graphic. The second graphic shows the sequence view annotated by issues in geometry and electron density. Residues are color-coded according to the number of geometric quality criteria for which they contain at least one outlier: green = 0, yellow = 1, orange = 2 and red = 3 or more. A red dot above a residue indicates a poor fit to the electron density ($RSRZ > 2$). Stretches of 2 or more consecutive residues without any outlier are shown as a green connector. Residues present in the sample, but not in the model, are shown in grey.

• Molecule 1: Elongation factor 1 alpha-like protein



• Molecule 2: Protein dom34





4 Data and refinement statistics

Property	Value	Source
Space group	P 21 21 21	Depositor
Cell constants a, b, c, α , β , γ	76.74Å 113.42Å 124.74Å 90.00° 90.00° 90.00°	Depositor
Resolution (Å)	20.00 – 2.74 83.92 – 2.60	Depositor EDS
% Data completeness (in resolution range)	99.9 (20.00-2.74) 99.9 (83.92-2.60)	Depositor EDS
R_{merge}	(Not available)	Depositor
R_{sym}	0.07	Depositor
$\langle I/\sigma(I) \rangle$ ¹	2.22 (at 2.62Å)	Xtriage
Refinement program	REFMAC 5.5.0109	Depositor
R, R_{free}	0.247 , 0.286 0.252 , 0.293	Depositor DCC
R_{free} test set	1464 reflections (5.27%)	DCC
Wilson B-factor (Å ²)	67.2	Xtriage
Anisotropy	0.058	Xtriage
Bulk solvent k_{sol} (e/Å ³), B_{sol} (Å ²)	0.33 , 66.2	EDS
L-test for twinning ²	$\langle L \rangle = 0.48$, $\langle L^2 \rangle = 0.31$	Xtriage
Estimated twinning fraction	No twinning to report.	Xtriage
F_o, F_c correlation	0.92	EDS
Total number of atoms	5853	wwPDB-VP
Average B, all atoms (Å ²)	66.0	wwPDB-VP

Xtriage's analysis on translational NCS is as follows: *The largest off-origin peak in the Patterson function is 4.47% of the height of the origin peak. No significant pseudotranslation is detected.*

¹Intensities estimated from amplitudes.

²Theoretical values of $\langle |L| \rangle$, $\langle L^2 \rangle$ for acentric reflections are 0.5, 0.333 respectively for untwinned datasets, and 0.375, 0.2 for perfectly twinned datasets.

5 Model quality

5.1 Standard geometry

The Z score for a bond length (or angle) is the number of standard deviations the observed value is removed from the expected value. A bond length (or angle) with $|Z| > 5$ is considered an outlier worth inspection. RMSZ is the root-mean-square of all Z scores of the bond lengths (or angles).

Mol	Chain	Bond lengths		Bond angles	
		RMSZ	$\# Z > 5$	RMSZ	$\# Z > 5$
1	A	0.51	0/2992	0.74	3/4055 (0.1%)
2	B	0.47	0/2793	0.69	2/3767 (0.1%)
All	All	0.49	0/5785	0.72	5/7822 (0.1%)

Chiral center outliers are detected by calculating the chiral volume of a chiral center and verifying if the center is modelled as a planar moiety or with the opposite hand. A planarity outlier is detected by checking planarity of atoms in a peptide group, atoms in a mainchain group or atoms of a sidechain that are expected to be planar.

Mol	Chain	#Chirality outliers	#Planarity outliers
1	A	0	2
2	B	0	2
All	All	0	4

There are no bond length outliers.

All (5) bond angle outliers are listed below:

Mol	Chain	Res	Type	Atoms	Z	Observed($^{\circ}$)	Ideal($^{\circ}$)
1	A	485	LEU	CA-CB-CG	8.44	134.70	115.30
2	B	39	LEU	CA-CB-CG	5.95	128.99	115.30
1	A	298	LEU	CA-CB-CG	5.48	127.90	115.30
2	B	159	LEU	CA-CB-CG	5.31	127.52	115.30
1	A	479	LEU	CA-CB-CG	5.23	127.32	115.30

There are no chirality outliers.

All (4) planarity outliers are listed below:

Mol	Chain	Res	Type	Group
1	A	282	ALA	Peptide
1	A	294	GLU	Peptide
2	B	255	GLU	Peptide
2	B	256	ILE	Peptide

5.2 Too-close contacts [i](#)

In the following table, the Non-H and H(model) columns list the number of non-hydrogen atoms and hydrogen atoms in the chain respectively. The H(added) column lists the number of hydrogen atoms added and optimized by MolProbity. The Clashes column lists the number of clashes within the asymmetric unit, whereas Symm-Clashes lists symmetry related clashes.

Mol	Chain	Non-H	H(model)	H(added)	Clashes	Symm-Clashes
1	A	2941	0	2995	143	0
2	B	2744	0	2718	126	0
3	A	89	0	0	23	0
3	B	79	0	0	11	0
All	All	5853	0	5713	265	0

The all-atom clashscore is defined as the number of clashes found per 1000 atoms (including hydrogen atoms). The all-atom clashscore for this structure is 23.

The worst 5 of 265 close contacts within the same asymmetric unit are listed below, sorted by their clash magnitude.

Atom-1	Atom-2	Interatomic distance (Å)	Clash overlap (Å)
2:B:311:LEU:HD22	2:B:365:ILE:HB	1.17	1.16
2:B:309:GLY:H	2:B:311:LEU:HD12	1.13	1.08
1:A:504:THR:HG22	1:A:547:LYS:H	1.18	1.07
2:B:162:ARG:HH11	2:B:162:ARG:HG3	0.87	1.04
2:B:309:GLY:N	2:B:311:LEU:HD12	1.75	1.01

There are no symmetry-related clashes.

5.3 Torsion angles [i](#)

5.3.1 Protein backbone [i](#)

In the following table, the Percentiles column shows the percent Ramachandran outliers of the chain as a percentile score with respect to all X-ray entries followed by that with respect to entries of similar resolution.

The Analysed column shows the number of residues for which the backbone conformation was analysed, and the total number of residues.

Mol	Chain	Analysed	Favoured	Allowed	Outliers	Percentiles
1	A	371/592 (63%)	315 (85%)	39 (10%)	17 (5%)	3 5
2	B	325/390 (83%)	297 (91%)	23 (7%)	5 (2%)	12 28

Continued on next page...

Continued from previous page...

Mol	Chain	Analysed	Favoured	Allowed	Outliers	Percentiles	
All	All	696/982 (71%)	612 (88%)	62 (9%)	22 (3%)	5	10

5 of 22 Ramachandran outliers are listed below:

Mol	Chain	Res	Type
1	A	159	PRO
1	A	167	GLU
1	A	416	PRO
1	A	452	ARG
1	A	454	SER

5.3.2 Protein sidechains ⓘ

In the following table, the Percentiles column shows the percent sidechain outliers of the chain as a percentile score with respect to all X-ray entries followed by that with respect to entries of similar resolution.

The Analysed column shows the number of residues for which the sidechain conformation was analysed, and the total number of residues.

Mol	Chain	Analysed	Rotameric	Outliers	Percentiles	
1	A	334/523 (64%)	278 (83%)	56 (17%)	2	5
2	B	303/346 (88%)	249 (82%)	54 (18%)	2	4
All	All	637/869 (73%)	527 (83%)	110 (17%)	2	5

5 of 110 residues with a non-rotameric sidechain are listed below:

Mol	Chain	Res	Type
1	A	575	ILE
2	B	39	LEU
2	B	332	LEU
1	A	577	ARG
1	A	591	LEU

Some sidechains can be flipped to improve hydrogen bonding and reduce clashes. 5 of 15 such sidechains are listed below:

Mol	Chain	Res	Type
1	A	453	ASN
1	A	542	HIS
2	B	251	HIS

Continued on next page...

Continued from previous page...

Mol	Chain	Res	Type
1	A	434	GLN
2	B	130	ASN

5.3.3 RNA [i](#)

There are no RNA molecules in this entry.

5.4 Non-standard residues in protein, DNA, RNA chains [i](#)

There are no non-standard protein/DNA/RNA residues in this entry.

5.5 Carbohydrates [i](#)

There are no carbohydrates in this entry.

5.6 Ligand geometry [i](#)

There are no ligands in this entry.

5.7 Other polymers [i](#)

There are no such residues in this entry.

5.8 Polymer linkage issues [i](#)

There are no chain breaks in this entry.

6 Fit of model and data [i](#)

6.1 Protein, DNA and RNA chains [i](#)

In the following table, the column labelled ‘#RSRZ> 2’ contains the number (and percentage) of RSRZ outliers, followed by percent RSRZ outliers for the chain as percentile scores relative to all X-ray entries and entries of similar resolution. The OWAB column contains the minimum, median, 95th percentile and maximum values of the occupancy-weighted average B-factor per residue. The column labelled ‘Q< 0.9’ lists the number of (and percentage) of residues with an average occupancy less than 0.9.

Mol	Chain	Analysed	<RSRZ>	#RSRZ>2	OWAB(Å ²)	Q<0.9
1	A	377/592 (63%)	0.27	6 (1%) 72 75	40, 59, 82, 104	0
2	B	341/390 (87%)	0.40	17 (4%) 30 30	42, 69, 119, 160	0
All	All	718/982 (73%)	0.34	23 (3%) 48 50	40, 62, 109, 160	0

The worst 5 of 23 RSRZ outliers are listed below:

Mol	Chain	Res	Type	RSRZ
2	B	124	ARG	5.1
2	B	76	THR	4.6
2	B	33	LEU	3.5
2	B	112	LEU	3.3
1	A	273	ILE	3.1

6.2 Non-standard residues in protein, DNA, RNA chains [i](#)

There are no non-standard protein/DNA/RNA residues in this entry.

6.3 Carbohydrates [i](#)

There are no carbohydrates in this entry.

6.4 Ligands [i](#)

There are no ligands in this entry.

6.5 Other polymers [i](#)

There are no such residues in this entry.