



Full wwPDB X-ray Structure Validation Report ⓘ

Feb 13, 2017 – 01:14 pm GMT

PDB ID : 4MF1
Title : ITK kinase domain in complex with benzothiazole inhibitor 12b (1S,2S)-2-{4-[(DIMETHYLAMINO)METHYL]PHENYL}-N-[6-(1H-PYRAZOL-4-YL)-1,3-BENZOTHAZOL-2-YL]CYCLOPROPANECARBOXAMIDE
Authors : Eigenbrot, C.; Shia, S.
Deposited on : 2013-08-27
Resolution : 2.11 Å(reported)

This is a Full wwPDB X-ray Structure Validation Report for a publicly released PDB entry.

We welcome your comments at validation@mail.wwpdb.org

A user guide is available at

<http://wwpdb.org/validation/2016/XrayValidationReportHelp>

with specific help available everywhere you see the ⓘ symbol.

The following versions of software and data (see [references ⓘ](#)) were used in the production of this report:

MolProbity : 4.02b-467
Mogul : 1.7.2 (RC1), CSD as538be (2017)
Xtriage (Phenix) : 1.9-1692
EDS : trunk28620
Percentile statistics : 20161228.v01 (using entries in the PDB archive December 28th 2016)
Refmac : 5.8.0135
CCP4 : 6.5.0
Ideal geometry (proteins) : Engh & Huber (2001)
Ideal geometry (DNA, RNA) : Parkinson et al. (1996)
Validation Pipeline (wwPDB-VP) : recalc28949

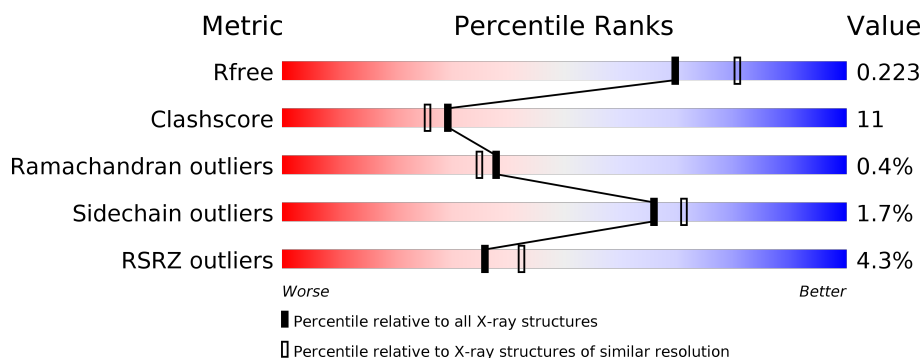
1 Overall quality at a glance

The following experimental techniques were used to determine the structure:

X-RAY DIFFRACTION

The reported resolution of this entry is 2.11 Å.

Percentile scores (ranging between 0-100) for global validation metrics of the entry are shown in the following graphic. The table shows the number of entries on which the scores are based.



Metric	Whole archive (#Entries)	Similar resolution (#Entries, resolution range(Å))
R_{free}	100719	4988 (2.14-2.10)
Clashscore	112137	5557 (2.14-2.10)
Ramachandran outliers	110173	5504 (2.14-2.10)
Sidechain outliers	110143	5505 (2.14-2.10)
RSRZ outliers	101464	5021 (2.14-2.10)

The table below summarises the geometric issues observed across the polymeric chains and their fit to the electron density. The red, orange, yellow and green segments on the lower bar indicate the fraction of residues that contain outliers for ≥ 3 , 2, 1 and 0 types of geometric quality criteria. A grey segment represents the fraction of residues that are not modelled. The numeric value for each fraction is indicated below the corresponding segment, with a dot representing fractions $\leq 5\%$. The upper red bar (where present) indicates the fraction of residues that have poor fit to the electron density. The numeric value is given above the bar.

Mol	Chain	Length	Quality of chain
1	A	266	<div> <div>5%</div> <div> <div></div> <div>76%</div> <div>14%</div> <div>•</div> <div>9%</div> </div> </div>
1	B	266	<div> <div>3%</div> <div> <div></div> <div>74%</div> <div>18%</div> <div>•</div> <div>8%</div> </div> </div>

2 Entry composition

There are 3 unique types of molecules in this entry. The entry contains 4231 atoms, of which 6 are hydrogens and 0 are deuteriums.

In the tables below, the ZeroOcc column contains the number of atoms modelled with zero occupancy, the AltConf column contains the number of residues with at least one atom in alternate conformation and the Trace column contains the number of residues modelled with at most 2 atoms.

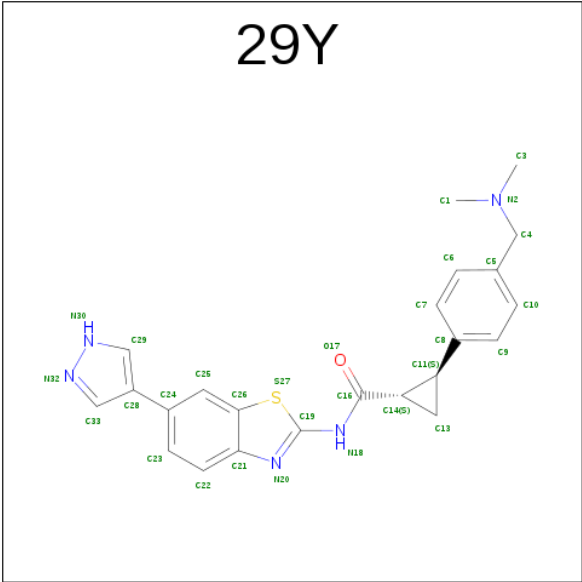
- Molecule 1 is a protein called Tyrosine-protein kinase ITK/TSK.

Mol	Chain	Residues	Atoms					ZeroOcc	AltConf	Trace
1	A	243	Total	C	N	O	S	0	1	0
			1925	1230	320	358	17			
1	B	246	Total	C	N	O	S	0	2	0
			1960	1253	326	364	17			

There are 10 discrepancies between the modelled and reference sequences:

Chain	Residue	Modelled	Actual	Comment	Reference
A	355	GLY	-	EXPRESSION TAG	UNP Q08881
A	356	SER	-	EXPRESSION TAG	UNP Q08881
A	477	SER	CYS	ENGINEERED MUTATION	UNP Q08881
A	614	ALA	GLU	ENGINEERED MUTATION	UNP Q08881
A	617	ALA	GLU	ENGINEERED MUTATION	UNP Q08881
B	355	GLY	-	EXPRESSION TAG	UNP Q08881
B	356	SER	-	EXPRESSION TAG	UNP Q08881
B	477	SER	CYS	ENGINEERED MUTATION	UNP Q08881
B	614	ALA	GLU	ENGINEERED MUTATION	UNP Q08881
B	617	ALA	GLU	ENGINEERED MUTATION	UNP Q08881

- Molecule 2 is (1S,2S)-2-{4-[(DIMETHYLAMINO)METHYL]PHENYL}-N-[6-(1H-PYRAZOL-4-YL)-1,3-BENZOTHAZOL-2-YL]CYCLOPROPANECARBOXAMIDE (three-letter code: 29Y) (formula: C₂₃H₂₃N₅OS).



Mol	Chain	Residues	Atoms						ZeroOcc	AltConf
2	A	1	Total	C	H	N	O	S	0	0
			33	23	3	5	1	1		
2	B	1	Total	C	H	N	O	S	0	0
			33	23	3	5	1	1		

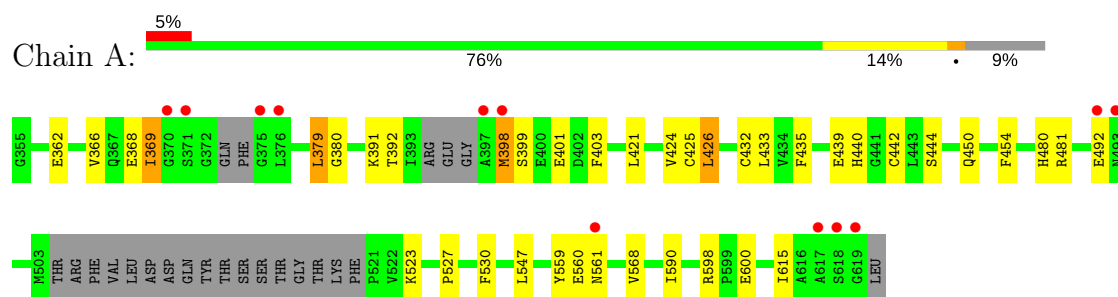
- Molecule 3 is water.

Mol	Chain	Residues	Atoms		ZeroOcc	AltConf
3	A	129	Total	O	0	0
			129	129		
3	B	151	Total	O	0	0
			151	151		

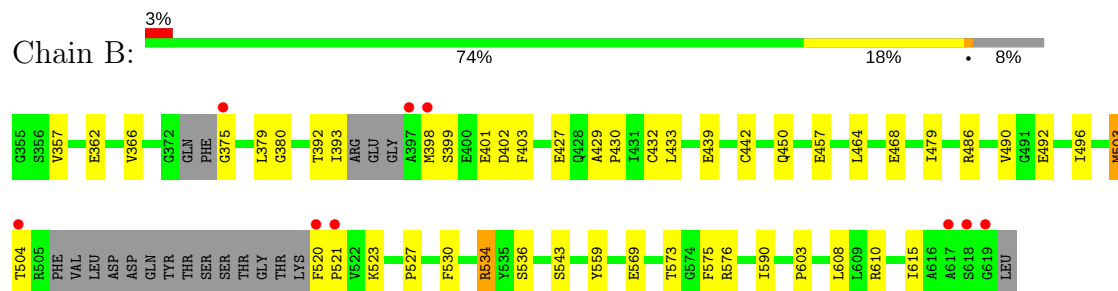
3 Residue-property plots [i](#)

These plots are drawn for all protein, RNA and DNA chains in the entry. The first graphic for a chain summarises the proportions of the various outlier classes displayed in the second graphic. The second graphic shows the sequence view annotated by issues in geometry and electron density. Residues are color-coded according to the number of geometric quality criteria for which they contain at least one outlier: green = 0, yellow = 1, orange = 2 and red = 3 or more. A red dot above a residue indicates a poor fit to the electron density ($RSRZ > 2$). Stretches of 2 or more consecutive residues without any outlier are shown as a green connector. Residues present in the sample, but not in the model, are shown in grey.

- Molecule 1: Tyrosine-protein kinase ITK/TSK



- Molecule 1: Tyrosine-protein kinase ITK/TSK



4 Data and refinement statistics

Property	Value	Source
Space group	P 1	Depositor
Cell constants a, b, c, α , β , γ	39.84Å 51.74Å 66.20Å 99.01° 104.62° 92.31°	Depositor
Resolution (Å)	29.88 – 2.11 29.88 – 2.12	Depositor EDS
% Data completeness (in resolution range)	93.7 (29.88-2.11) 86.7 (29.88-2.12)	Depositor EDS
R_{merge}	(Not available)	Depositor
R_{sym}	0.06	Depositor
$\langle I/\sigma(I) \rangle$ ¹	5.09 (at 2.12Å)	Xtriage
Refinement program	PHENIX (phenix.refine: 1.7.3_928)	Depositor
R, R_{free}	0.175 , 0.229 0.168 , 0.223	Depositor DCC
R_{free} test set	863 reflections (3.21%)	DCC
Wilson B-factor (Å ²)	19.5	Xtriage
Anisotropy	0.279	Xtriage
Bulk solvent k_{sol} (e/Å ³), B_{sol} (Å ²)	0.35 , 48.1	EDS
L-test for twinning ²	$\langle L \rangle = 0.49$, $\langle L^2 \rangle = 0.33$	Xtriage
Estimated twinning fraction	No twinning to report.	Xtriage
F_o, F_c correlation	0.95	EDS
Total number of atoms	4231	wwPDB-VP
Average B, all atoms (Å ²)	26.0	wwPDB-VP

Xtriage's analysis on translational NCS is as follows: *The largest off-origin peak in the Patterson function is 7.83% of the height of the origin peak. No significant pseudotranslation is detected.*

¹Intensities estimated from amplitudes.

²Theoretical values of $\langle |L| \rangle$, $\langle L^2 \rangle$ for acentric reflections are 0.5, 0.333 respectively for untwinned datasets, and 0.375, 0.2 for perfectly twinned datasets.

5 Model quality

5.1 Standard geometry

Bond lengths and bond angles in the following residue types are not validated in this section: 29Y

The Z score for a bond length (or angle) is the number of standard deviations the observed value is removed from the expected value. A bond length (or angle) with $|Z| > 5$ is considered an outlier worth inspection. RMSZ is the root-mean-square of all Z scores of the bond lengths (or angles).

Mol	Chain	Bond lengths		Bond angles	
		RMSZ	$\# Z > 5$	RMSZ	$\# Z > 5$
1	A	0.37	0/1969	0.51	0/2656
1	B	0.37	0/2008	0.53	0/2709
All	All	0.37	0/3977	0.52	0/5365

There are no bond length outliers.

There are no bond angle outliers.

There are no chirality outliers.

There are no planarity outliers.

5.2 Too-close contacts

In the following table, the Non-H and H(model) columns list the number of non-hydrogen atoms and hydrogen atoms in the chain respectively. The H(added) column lists the number of hydrogen atoms added and optimized by MolProbity. The Clashes column lists the number of clashes within the asymmetric unit, whereas Symm-Clashes lists symmetry related clashes.

Mol	Chain	Non-H	H(model)	H(added)	Clashes	Symm-Clashes
1	A	1925	0	1892	41	0
1	B	1960	0	1926	42	0
2	A	30	3	22	3	0
2	B	30	3	22	1	0
3	A	129	0	0	3	0
3	B	151	0	0	6	0
All	All	4225	6	3862	84	0

The all-atom clashscore is defined as the number of clashes found per 1000 atoms (including hydrogen atoms). The all-atom clashscore for this structure is 11.

All (84) close contacts within the same asymmetric unit are listed below, sorted by their clash

magnitude.

Atom-1	Atom-2	Interatomic distance (Å)	Clash overlap (Å)
1:B:520:PHE:HB2	1:B:521:PRO:HD3	1.37	1.07
1:A:403:PHE:CE2	1:A:433:LEU:HD13	2.06	0.90
1:A:379:LEU:HD22	1:A:380:GLY:N	1.90	0.87
1:A:439:GLU:OE2	1:A:492:GLU:HA	1.79	0.83
1:B:357:VAL:HG13	3:B:915:HOH:O	1.77	0.82
1:A:392:THR:HG23	3:A:831:HOH:O	1.85	0.76
1:B:439[A]:GLU:OE1	1:B:492:GLU:HG2	1.86	0.75
1:B:520:PHE:HB2	1:B:521:PRO:CD	2.15	0.75
1:B:569:GLU:O	1:B:573:THR:HG23	1.88	0.73
1:B:379:LEU:HD23	1:B:380:GLY:N	2.07	0.68
1:B:503:MET:N	1:B:503:MET:SD	2.59	0.68
1:B:590:ILE:HD12	1:B:615:ILE:HD12	1.78	0.65
1:A:399:SER:HB2	3:A:890:HOH:O	1.95	0.65
1:B:590:ILE:HD12	1:B:615:ILE:CD1	2.27	0.64
1:B:490:VAL:HG22	1:B:496:ILE:HD12	1.81	0.62
1:B:379:LEU:C	1:B:379:LEU:HD23	2.21	0.62
1:B:403:PHE:CE2	1:B:433:LEU:HD13	2.34	0.61
1:A:442[B]:CYS:SG	1:A:444:SER:OG	2.58	0.61
1:A:391:LYS:HE3	2:A:701:29Y:N32	2.17	0.60
1:B:398:MET:HG2	1:B:399:SER:N	2.18	0.59
1:A:598:ARG:NH2	1:A:600:GLU:HG3	2.18	0.58
1:B:523:LYS:NZ	1:B:559:TYR:O	2.36	0.58
1:B:375:GLY:HA3	1:B:392:THR:O	2.03	0.57
1:A:590:ILE:CD1	1:A:615:ILE:HD11	2.34	0.57
1:A:590:ILE:HD12	1:A:615:ILE:CD1	2.35	0.57
1:A:480:HIS:O	1:A:481:ARG:HB2	2.04	0.56
1:A:403:PHE:CE2	1:A:433:LEU:CD1	2.86	0.56
1:A:391:LYS:CE	2:A:701:29Y:N32	2.69	0.56
1:A:421:LEU:HD12	1:A:421:LEU:N	2.21	0.55
2:A:701:29Y:O17	2:A:701:29Y:S27	2.64	0.55
1:A:439:GLU:HG3	1:A:440:HIS:CD2	2.44	0.53
1:B:362:GLU:OE2	3:B:927:HOH:O	2.19	0.53
1:B:490:VAL:HG22	1:B:496:ILE:CD1	2.38	0.53
1:B:366:VAL:HB	1:B:379:LEU:HD22	1.91	0.53
1:A:590:ILE:HD12	1:A:615:ILE:HD11	1.92	0.52
1:B:534:ARG:HG2	3:B:850:HOH:O	2.08	0.52
1:A:398:MET:HE1	1:A:403:PHE:HA	1.90	0.52
1:B:575:PHE:O	1:B:576:ARG:HD3	2.10	0.52
1:A:439:GLU:CD	1:A:492:GLU:HA	2.30	0.52
1:A:362:GLU:OE2	1:B:610:ARG:NE	2.32	0.51
1:A:527:PRO:HA	1:A:530:PHE:CZ	2.46	0.51

Continued on next page...

Continued from previous page...

Atom-1	Atom-2	Interatomic distance (Å)	Clash overlap (Å)
1:A:440:HIS:O	3:A:862:HOH:O	2.19	0.51
1:B:504:THR:O	1:B:504:THR:HG22	2.10	0.51
1:B:504:THR:HA	3:B:921:HOH:O	2.11	0.51
1:A:450:GLN:HB3	1:A:454:PHE:CZ	2.46	0.50
1:A:403:PHE:HE2	1:A:433:LEU:HD13	1.70	0.50
1:A:530:PHE:CE2	1:A:568:VAL:HG13	2.46	0.49
1:B:590:ILE:CD1	1:B:615:ILE:CD1	2.91	0.49
1:B:464:LEU:O	1:B:468:GLU:HG3	2.12	0.49
1:A:523:LYS:HE2	1:A:559:TYR:HB2	1.95	0.49
1:B:399:SER:HB3	1:B:402:ASP:OD1	2.13	0.49
2:B:701:29Y:S27	2:B:701:29Y:O17	2.71	0.49
1:A:366:VAL:HB	1:A:379:LEU:HD13	1.96	0.48
1:A:368:GLU:HG2	1:A:369:ILE:N	2.29	0.47
1:A:379:LEU:HD22	1:A:379:LEU:C	2.34	0.47
1:B:590:ILE:CD1	1:B:615:ILE:HD11	2.45	0.47
1:A:424:VAL:HG12	1:A:426:LEU:HG	1.97	0.47
1:A:426:LEU:HD12	1:A:426:LEU:H	1.80	0.46
1:B:603:PRO:HG2	1:B:608:LEU:HG	1.97	0.46
1:A:590:ILE:CD1	1:A:615:ILE:CD1	2.94	0.44
1:B:479:ILE:HD13	1:B:536:SER:HA	1.99	0.44
1:A:398:MET:CE	1:A:403:PHE:HA	2.48	0.44
1:B:520:PHE:CB	1:B:521:PRO:HD3	2.25	0.44
1:B:379:LEU:C	1:B:379:LEU:CD2	2.85	0.44
1:B:523:LYS:HZ2	1:B:559:TYR:HB2	1.82	0.44
1:B:429:ALA:HA	1:B:430:PRO:C	2.39	0.44
1:B:442[B]:CYS:SG	1:B:486:ARG:HA	2.58	0.43
1:A:547:LEU:C	1:A:547:LEU:HD23	2.39	0.43
1:B:527:PRO:HA	1:B:530:PHE:CZ	2.53	0.43
1:B:393:ILE:HG13	1:B:403:PHE:CD1	2.54	0.43
1:A:600:GLU:CD	1:A:600:GLU:H	2.21	0.42
1:B:392:THR:HG22	1:B:432:CYS:HB3	2.00	0.42
1:B:457:GLU:H	1:B:457:GLU:CD	2.23	0.42
1:A:421:LEU:HA	1:A:435:PHE:HA	2.02	0.41
1:B:450:GLN:HG2	3:B:925:HOH:O	2.20	0.41
1:B:399:SER:OG	1:B:401:GLU:HG2	2.20	0.41
1:A:379:LEU:HD22	1:A:380:GLY:H	1.79	0.41
1:A:379:LEU:CD2	1:A:380:GLY:N	2.74	0.41
1:B:523:LYS:NZ	3:B:834:HOH:O	2.05	0.41
1:A:560:GLU:O	1:A:561:ASN:CG	2.59	0.41
1:A:421:LEU:CD1	1:A:421:LEU:N	2.84	0.40
1:A:425:CYS:HB3	1:A:432:CYS:SG	2.61	0.40

Continued on next page...

Continued from previous page...

Atom-1	Atom-2	Interatomic distance (Å)	Clash overlap (Å)
1:B:590:ILE:HD12	1:B:615:ILE:HD11	2.01	0.40
1:A:527:PRO:HA	1:A:530:PHE:CE1	2.57	0.40

There are no symmetry-related clashes.

5.3 Torsion angles [i](#)

5.3.1 Protein backbone [i](#)

In the following table, the Percentiles column shows the percent Ramachandran outliers of the chain as a percentile score with respect to all X-ray entries followed by that with respect to entries of similar resolution.

The Analysed column shows the number of residues for which the backbone conformation was analysed, and the total number of residues.

Mol	Chain	Analysed	Favoured	Allowed	Outliers	Percentiles	
1	A	236/266 (89%)	229 (97%)	5 (2%)	2 (1%)	22	16
1	B	240/266 (90%)	233 (97%)	7 (3%)	0	100	100
All	All	476/532 (90%)	462 (97%)	12 (2%)	2 (0%)	38	35

All (2) Ramachandran outliers are listed below:

Mol	Chain	Res	Type
1	A	398	MET
1	A	369	ILE

5.3.2 Protein sidechains [i](#)

In the following table, the Percentiles column shows the percent sidechain outliers of the chain as a percentile score with respect to all X-ray entries followed by that with respect to entries of similar resolution.

The Analysed column shows the number of residues for which the sidechain conformation was analysed, and the total number of residues.

Mol	Chain	Analysed	Rotameric	Outliers	Percentiles	
1	A	211/231 (91%)	208 (99%)	3 (1%)	71	77
1	B	215/231 (93%)	211 (98%)	4 (2%)	62	67

Continued on next page...

Continued from previous page...

Mol	Chain	Analysed	Rotameric	Outliers	Percentiles	
All	All	426/462 (92%)	419 (98%)	7 (2%)	66	73

All (7) residues with a non-rotameric sidechain are listed below:

Mol	Chain	Res	Type
1	A	379	LEU
1	A	401	GLU
1	A	426	LEU
1	B	427	GLU
1	B	503	MET
1	B	534	ARG
1	B	543	SER

Some sidechains can be flipped to improve hydrogen bonding and reduce clashes. There are no such sidechains identified.

5.3.3 RNA [i](#)

There are no RNA molecules in this entry.

5.4 Non-standard residues in protein, DNA, RNA chains [i](#)

There are no non-standard protein/DNA/RNA residues in this entry.

5.5 Carbohydrates [i](#)

There are no carbohydrates in this entry.

5.6 Ligand geometry [i](#)

2 ligands are modelled in this entry.

In the following table, the Counts columns list the number of bonds (or angles) for which Mogul statistics could be retrieved, the number of bonds (or angles) that are observed in the model and the number of bonds (or angles) that are defined in the chemical component dictionary. The Link column lists molecule types, if any, to which the group is linked. The Z score for a bond length (or angle) is the number of standard deviations the observed value is removed from the expected value. A bond length (or angle) with $|Z| > 2$ is considered an outlier worth inspection. RMSZ is the root-mean-square of all Z scores of the bond lengths (or angles).

Mol	Type	Chain	Res	Link	Bond lengths			Bond angles		
					Counts	RMSZ	# Z > 2	Counts	RMSZ	# Z > 2
2	29Y	A	701	-	29,34,34	1.29	1 (3%)	36,49,49	1.72	7 (19%)
2	29Y	B	701	-	29,34,34	1.19	2 (6%)	36,49,49	1.54	7 (19%)

In the following table, the Chirals column lists the number of chiral outliers, the number of chiral centers analysed, the number of these observed in the model and the number defined in the chemical component dictionary. Similar counts are reported in the Torsion and Rings columns. '-' means no outliers of that kind were identified.

Mol	Type	Chain	Res	Link	Chirals	Torsions	Rings
2	29Y	A	701	-	-	0/18/25/25	0/4/5/5
2	29Y	B	701	-	-	0/18/25/25	0/4/5/5

All (3) bond length outliers are listed below:

Mol	Chain	Res	Type	Atoms	Z	Observed(Å)	Ideal(Å)
2	A	701	29Y	C29-C28	-5.36	1.36	1.39
2	B	701	29Y	C29-C28	-4.57	1.36	1.39
2	B	701	29Y	C13-C11	2.15	1.54	1.50

All (14) bond angle outliers are listed below:

Mol	Chain	Res	Type	Atoms	Z	Observed(°)	Ideal(°)
2	B	701	29Y	C8-C11-C14	-4.07	112.70	120.60
2	A	701	29Y	C29-C28-C24	-3.92	125.99	127.37
2	A	701	29Y	C8-C11-C14	-3.92	113.00	120.60
2	A	701	29Y	C21-C26-S27	-3.03	108.22	112.03
2	B	701	29Y	C28-C29-N30	-2.99	107.07	108.15
2	A	701	29Y	O17-C16-C14	-2.83	118.25	121.64
2	B	701	29Y	C21-C26-S27	-2.63	108.73	112.03
2	B	701	29Y	C29-C28-C24	-2.46	126.50	127.37
2	B	701	29Y	C5-C4-N2	-2.03	109.42	113.07
2	A	701	29Y	C26-C21-N20	2.19	113.09	108.04
2	B	701	29Y	C14-C16-N18	2.90	118.54	114.91
2	A	701	29Y	C25-C26-S27	3.02	130.39	124.84
2	B	701	29Y	C25-C26-S27	3.19	130.72	124.84
2	A	701	29Y	C14-C16-N18	4.53	120.59	114.91

There are no chirality outliers.

There are no torsion outliers.

There are no ring outliers.

2 monomers are involved in 4 short contacts:

Mol	Chain	Res	Type	Clashes	Symm-Clashes
2	A	701	29Y	3	0
2	B	701	29Y	1	0

5.7 Other polymers [i](#)

There are no such residues in this entry.

5.8 Polymer linkage issues [i](#)

There are no chain breaks in this entry.

6 Fit of model and data

6.1 Protein, DNA and RNA chains

In the following table, the column labelled ‘#RSRZ> 2’ contains the number (and percentage) of RSRZ outliers, followed by percent RSRZ outliers for the chain as percentile scores relative to all X-ray entries and entries of similar resolution. The OWAB column contains the minimum, median, 95th percentile and maximum values of the occupancy-weighted average B-factor per residue. The column labelled ‘Q< 0.9’ lists the number of (and percentage) of residues with an average occupancy less than 0.9.

Mol	Chain	Analysed	<RSRZ>	#RSRZ>2	OWAB(Å ²)	Q<0.9
1	A	243/266 (91%)	-0.03	12 (4%) 30 36	12, 24, 46, 67	0
1	B	246/266 (92%)	-0.06	9 (3%) 42 49	14, 22, 45, 76	0
All	All	489/532 (91%)	-0.05	21 (4%) 36 42	12, 23, 46, 76	0

All (21) RSRZ outliers are listed below:

Mol	Chain	Res	Type	RSRZ
1	B	520	PHE	6.6
1	A	371	SER	4.6
1	B	397	ALA	3.9
1	A	397	ALA	3.7
1	B	618	SER	3.6
1	B	619	GLY	3.5
1	B	521	PRO	3.2
1	A	619	GLY	3.1
1	B	398	MET	2.8
1	A	561	ASN	2.5
1	B	617	ALA	2.5
1	A	376	LEU	2.3
1	A	398	MET	2.3
1	A	492	GLU	2.2
1	A	370	GLY	2.1
1	B	504	THR	2.1
1	A	375	GLY	2.1
1	B	375	GLY	2.1
1	A	493	ASN	2.1
1	A	618	SER	2.1
1	A	617	ALA	2.0

6.2 Non-standard residues in protein, DNA, RNA chains [i](#)

There are no non-standard protein/DNA/RNA residues in this entry.

6.3 Carbohydrates [i](#)

There are no carbohydrates in this entry.

6.4 Ligands [i](#)

In the following table, the Atoms column lists the number of modelled atoms in the group and the number defined in the chemical component dictionary. LLDF column lists the quality of electron density of the group with respect to its neighbouring residues in protein, DNA or RNA chains. The B-factors column lists the minimum, median, 95th percentile and maximum values of B factors of atoms in the group. The column labelled 'Q< 0.9' lists the number of atoms with occupancy less than 0.9.

Mol	Type	Chain	Res	Atoms	RSCC	RSR	LLDF	B-factors(\AA^2)	Q<0.9
2	29Y	A	701	30/30	0.90	0.18	1.48	16,28,53,54	0
2	29Y	B	701	30/30	0.94	0.15	0.71	15,24,54,65	0

6.5 Other polymers [i](#)

There are no such residues in this entry.