



# Full wwPDB X-ray Structure Validation Report ⓘ

Feb 15, 2017 – 12:35 am GMT

PDB ID : 1ML3  
Title : Evidences for a flip-flop catalytic mechanism of Trypanosoma cruzi glyceraldehyde-3-phosphate dehydrogenase, from its crystal structure in complex with reacted irreversible inhibitor 2-(2-phosphono-ethyl)-acrylic acid 4-nitro-phenyl ester  
Authors : Castilho, M.S.; Pavao, F.; Oliva, G.  
Deposited on : 2002-08-29  
Resolution : 2.50 Å(reported)

This is a Full wwPDB X-ray Structure Validation Report for a publicly released PDB entry.

We welcome your comments at [validation@mail.wwpdb.org](mailto:validation@mail.wwpdb.org)

A user guide is available at

<http://wwpdb.org/validation/2016/XrayValidationReportHelp>

with specific help available everywhere you see the ⓘ symbol.

---

The following versions of software and data (see [references ⓘ](#)) were used in the production of this report:

MolProbity : 4.02b-467  
Mogul : 1.7.2 (RC1), CSD as538be (2017)  
Xtriage (Phenix) : 1.9-1692  
EDS : trunk28620  
Percentile statistics : 20161228.v01 (using entries in the PDB archive December 28th 2016)  
Refmac : 5.8.0135  
CCP4 : 6.5.0  
Ideal geometry (proteins) : Engh & Huber (2001)  
Ideal geometry (DNA, RNA) : Parkinson et al. (1996)  
Validation Pipeline (wwPDB-VP) : recalc28949

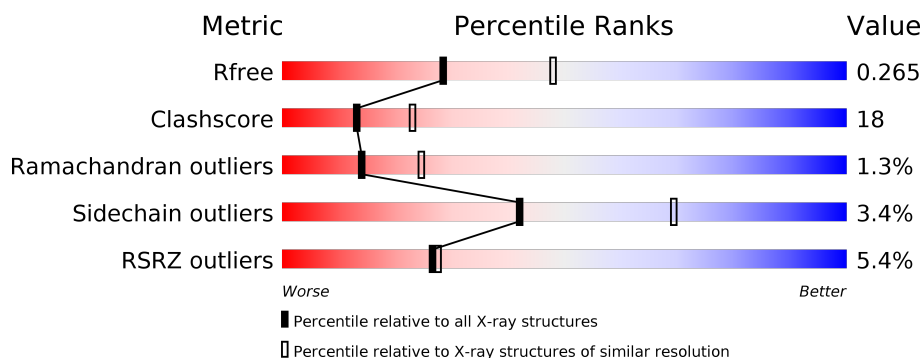
# 1 Overall quality at a glance

The following experimental techniques were used to determine the structure:

*X-RAY DIFFRACTION*

The reported resolution of this entry is 2.50 Å.

Percentile scores (ranging between 0-100) for global validation metrics of the entry are shown in the following graphic. The table shows the number of entries on which the scores are based.



Metric	Whole archive (#Entries)	Similar resolution (#Entries, resolution range(Å))
$R_{free}$	100719	3846 (2.50-2.50)
Clashscore	112137	4554 (2.50-2.50)
Ramachandran outliers	110173	4463 (2.50-2.50)
Sidechain outliers	110143	4465 (2.50-2.50)
RSRZ outliers	101464	3876 (2.50-2.50)

The table below summarises the geometric issues observed across the polymeric chains and their fit to the electron density. The red, orange, yellow and green segments on the lower bar indicate the fraction of residues that contain outliers for  $\geq 3$ , 2, 1 and 0 types of geometric quality criteria. A grey segment represents the fraction of residues that are not modelled. The numeric value for each fraction is indicated below the corresponding segment, with a dot representing fractions  $\leq 5\%$ . The upper red bar (where present) indicates the fraction of residues that have poor fit to the electron density. The numeric value is given above the bar.

Mol	Chain	Length	Quality of chain
1	A	359	<div> <div>2%</div> <div>71%</div> <div>27%</div> <div>•</div> </div>
1	B	359	<div> <div>5%</div> <div>64%</div> <div>33%</div> <div>•</div> </div>
1	C	359	<div> <div>14%</div> <div>63%</div> <div>35%</div> <div>•</div> </div>
1	D	359	<div> <div>%</div> <div>73%</div> <div>25%</div> <div>•</div> </div>

The following table lists non-polymeric compounds, carbohydrate monomers and non-standard residues in protein, DNA, RNA chains that are outliers for geometric or electron-density-fit crite-

ria:

Mol	Type	Chain	Res	Chirality	Geometry	Clashes	Electron density
2	NAD	B	1362	-	-	-	X
3	CYX	B	1166[A]	-	-	-	X
3	CYX	B	1166[B]	-	-	-	X
3	CYX	C	2166[A]	-	-	-	X
3	CYX	C	2166[B]	-	-	-	X
3	CYX	D	3166	-	-	-	X

2 Entry composition ⓘ

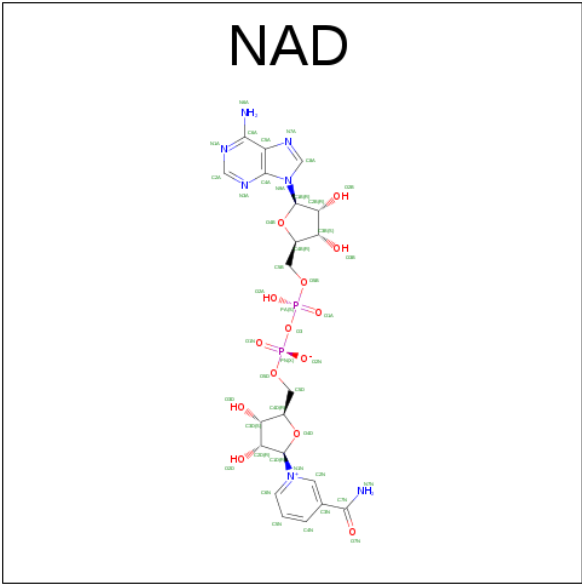
There are 4 unique types of molecules in this entry. The entry contains 11861 atoms, of which 0 are hydrogens and 0 are deuteriums.

In the tables below, the ZeroOcc column contains the number of atoms modelled with zero occupancy, the AltConf column contains the number of residues with at least one atom in alternate conformation and the Trace column contains the number of residues modelled with at most 2 atoms.

- Molecule 1 is a protein called Glyceraldehyde 3-phosphate dehydrogenase, glycosomal.

Mol	Chain	Residues	Atoms					ZeroOcc	AltConf	Trace
1	A	359	Total	C	N	O	S	20	0	0
			2745	1725	486	520	14			
1	B	359	Total	C	N	O	S	52	1	0
			2747	1726	486	520	15			
1	C	359	Total	C	N	O	S	101	1	0
			2747	1726	486	520	15			
1	D	359	Total	C	N	O	S	12	0	0
			2745	1725	486	520	14			

- Molecule 2 is NICOTINAMIDE-ADENINE-DINUCLEOTIDE (three-letter code: NAD) (formula: C<sub>21</sub>H<sub>27</sub>N<sub>7</sub>O<sub>14</sub>P<sub>2</sub>).



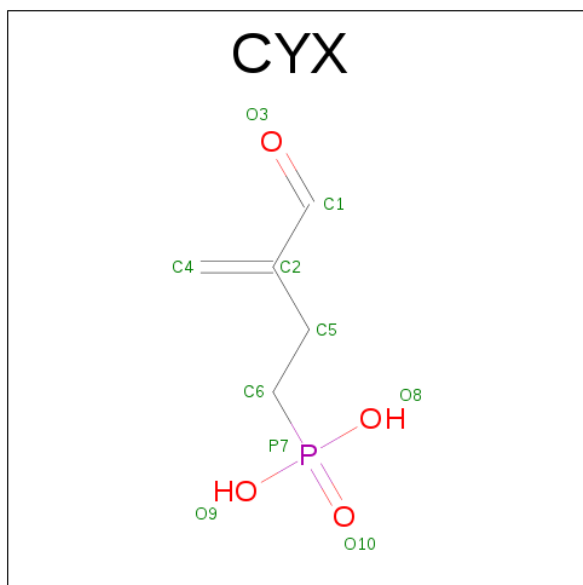
Mol	Chain	Residues	Atoms					ZeroOcc	AltConf
2	C	1	Total	C	N	O	P	0	0
			44	21	7	14	2		
2	D	1	Total	C	N	O	P	0	0
			44	21	7	14	2		

Continued on next page...

Continued from previous page...

Mol	Chain	Residues	Atoms					ZeroOcc	AltConf
2	B	1	Total	C	N	O	P	0	0
			44	21	7	14	2		

- Molecule 3 is (3-FORMYL-BUT-3-ENYL)-PHOSPHONIC ACID (three-letter code: CYX) (formula: C<sub>5</sub>H<sub>9</sub>O<sub>4</sub>P).



Mol	Chain	Residues	Atoms				ZeroOcc	AltConf
3	B	1	Total	C	O	P	0	1
			20	10	8	2		
3	C	1	Total	C	O	P	0	1
			20	10	8	2		
3	D	1	Total	C	O	P	0	0
			10	5	4	1		

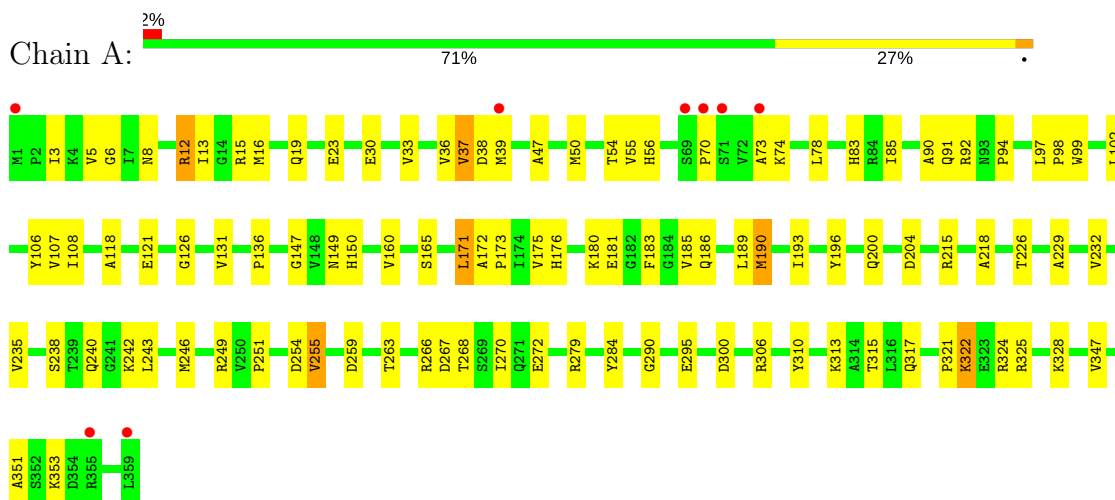
- Molecule 4 is water.

Mol	Chain	Residues	Atoms		ZeroOcc	AltConf
4	A	217	Total	O	0	0
			217	217		
4	B	161	Total	O	0	0
			161	161		
4	C	123	Total	O	0	0
			123	123		
4	D	194	Total	O	0	0
			194	194		

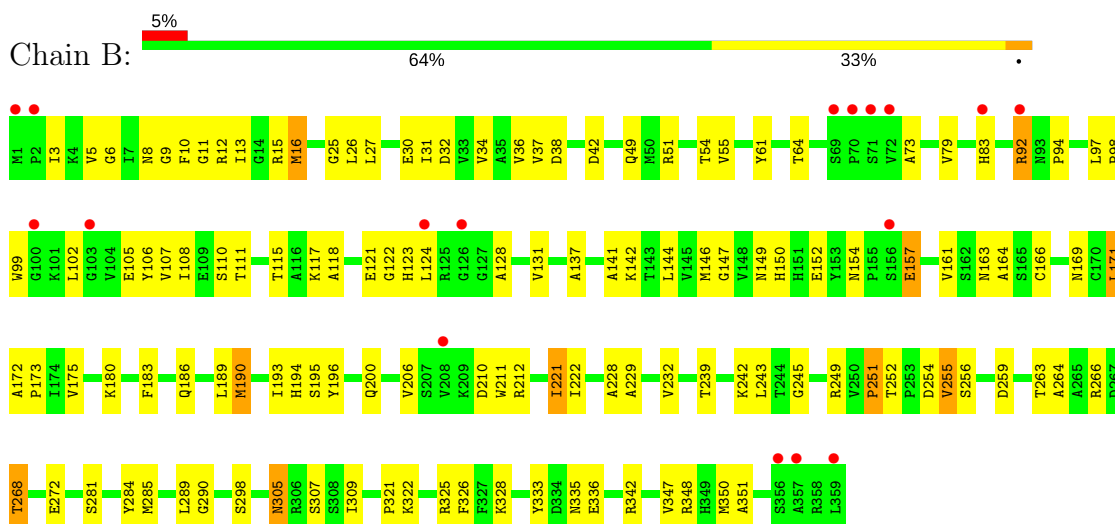
### 3 Residue-property plots [i](#)

These plots are drawn for all protein, RNA and DNA chains in the entry. The first graphic for a chain summarises the proportions of the various outlier classes displayed in the second graphic. The second graphic shows the sequence view annotated by issues in geometry and electron density. Residues are color-coded according to the number of geometric quality criteria for which they contain at least one outlier: green = 0, yellow = 1, orange = 2 and red = 3 or more. A red dot above a residue indicates a poor fit to the electron density ( $RSRZ > 2$ ). Stretches of 2 or more consecutive residues without any outlier are shown as a green connector. Residues present in the sample, but not in the model, are shown in grey.

- Molecule 1: Glyceraldehyde 3-phosphate dehydrogenase, glycosomal

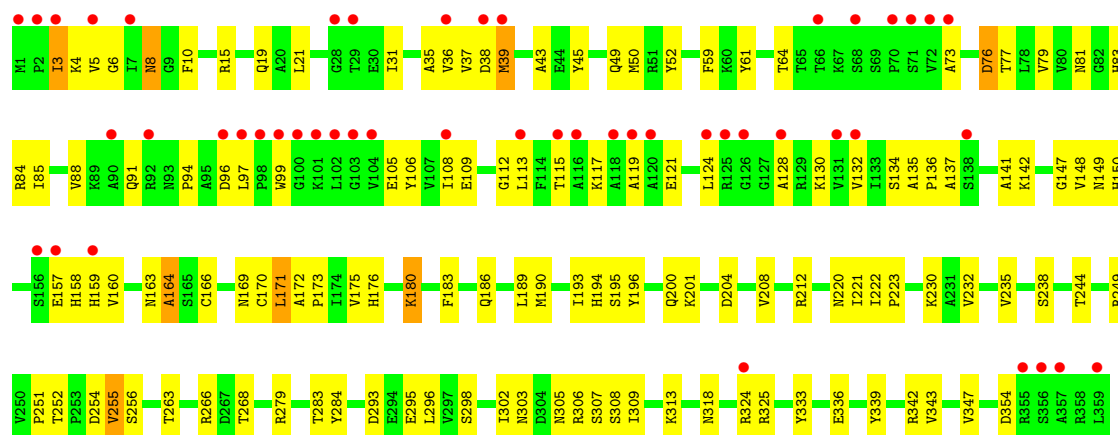


- Molecule 1: Glyceraldehyde 3-phosphate dehydrogenase, glycosomal

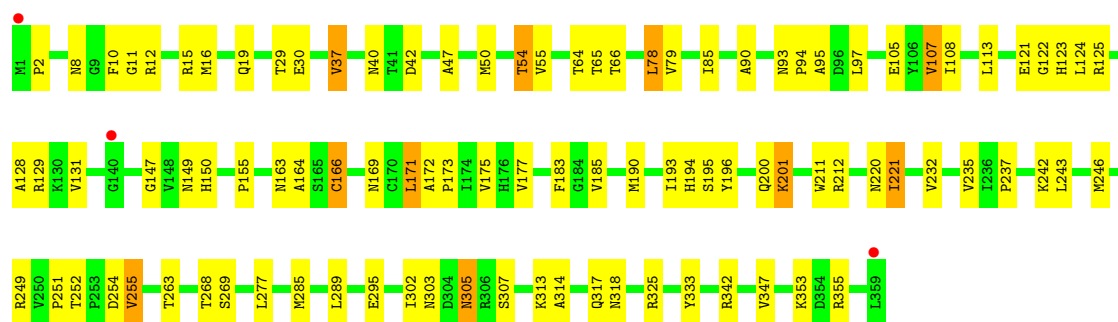
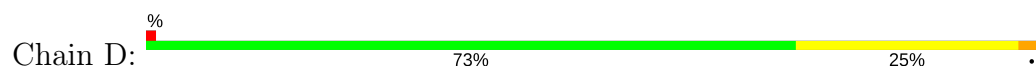


- Molecule 1: Glyceraldehyde 3-phosphate dehydrogenase, glycosomal





• Molecule 1: Glyceraldehyde 3-phosphate dehydrogenase, glycosomal



## 4 Data and refinement statistics

Property	Value	Source
Space group	P 1 21 1	Depositor
Cell constants a, b, c, $\alpha$ , $\beta$ , $\gamma$	81.46Å 85.26Å 105.15Å 90.00° 95.61° 90.00°	Depositor
Resolution (Å)	20.00 – 2.50 19.88 – 2.50	Depositor EDS
% Data completeness (in resolution range)	97.5 (20.00-2.50) 97.5 (19.88-2.50)	Depositor EDS
$R_{merge}$	0.11	Depositor
$R_{sym}$	(Not available)	Depositor
$\langle I/\sigma(I) \rangle$ <sup>1</sup>	2.92 (at 2.50Å)	Xtriage
Refinement program	CNS 1.0	Depositor
R, $R_{free}$	0.199 , 0.265 0.199 , 0.265	Depositor DCC
$R_{free}$ test set	2455 reflections (5.07%)	DCC
Wilson B-factor (Å <sup>2</sup> )	25.6	Xtriage
Anisotropy	0.530	Xtriage
Bulk solvent $k_{sol}$ (e/Å <sup>3</sup> ), $B_{sol}$ (Å <sup>2</sup> )	0.33 , 61.8	EDS
L-test for twinning <sup>2</sup>	$\langle  L  \rangle = 0.49$ , $\langle L^2 \rangle = 0.32$	Xtriage
Estimated twinning fraction	No twinning to report.	Xtriage
$F_o, F_c$ correlation	0.94	EDS
Total number of atoms	11861	wwPDB-VP
Average B, all atoms (Å <sup>2</sup> )	30.0	wwPDB-VP

Xtriage's analysis on translational NCS is as follows: *The largest off-origin peak in the Patterson function is 4.25% of the height of the origin peak. No significant pseudotranslation is detected.*

<sup>1</sup>Intensities estimated from amplitudes.

<sup>2</sup>Theoretical values of  $\langle |L| \rangle$ ,  $\langle L^2 \rangle$  for acentric reflections are 0.5, 0.333 respectively for untwinned datasets, and 0.375, 0.2 for perfectly twinned datasets.



## 5 Model quality

### 5.1 Standard geometry

Bond lengths and bond angles in the following residue types are not validated in this section: CYX, NAD

The Z score for a bond length (or angle) is the number of standard deviations the observed value is removed from the expected value. A bond length (or angle) with  $|Z| > 5$  is considered an outlier worth inspection. RMSZ is the root-mean-square of all Z scores of the bond lengths (or angles).

Mol	Chain	Bond lengths		Bond angles	
		RMSZ	# Z  >5	RMSZ	# Z  >5
1	A	0.37	0/2798	0.61	0/3792
1	B	0.36	0/2804	0.60	1/3800 (0.0%)
1	C	0.34	0/2804	0.58	1/3800 (0.0%)
1	D	0.38	0/2798	0.62	1/3792 (0.0%)
All	All	0.36	0/11204	0.60	3/15184 (0.0%)

There are no bond length outliers.

All (3) bond angle outliers are listed below:

Mol	Chain	Res	Type	Atoms	Z	Observed(°)	Ideal(°)
1	D	221	ILE	N-CA-C	-6.01	94.77	111.00
1	B	221	ILE	N-CA-C	-5.67	95.70	111.00
1	C	221	ILE	N-CA-C	-5.28	96.75	111.00

There are no chirality outliers.

There are no planarity outliers.

### 5.2 Too-close contacts

In the following table, the Non-H and H(model) columns list the number of non-hydrogen atoms and hydrogen atoms in the chain respectively. The H(added) column lists the number of hydrogen atoms added and optimized by MolProbity. The Clashes column lists the number of clashes within the asymmetric unit, whereas Symm-Clashes lists symmetry related clashes.

Mol	Chain	Non-H	H(model)	H(added)	Clashes	Symm-Clashes
1	A	2745	0	2749	95	0
1	B	2747	0	2748	128	0
1	C	2747	0	2748	110	0
1	D	2745	0	2748	87	0

*Continued on next page...*

*Continued from previous page...*

Mol	Chain	Non-H	H(model)	H(added)	Clashes	Symm-Clashes
2	B	44	0	26	3	0
2	C	44	0	26	0	0
2	D	44	0	26	2	0
3	B	20	0	12	2	0
3	C	20	0	12	1	0
3	D	10	0	6	0	0
4	A	217	0	0	13	0
4	B	161	0	0	13	0
4	C	123	0	0	14	0
4	D	194	0	0	4	0
All	All	11861	0	11101	396	0

The all-atom clashscore is defined as the number of clashes found per 1000 atoms (including hydrogen atoms). The all-atom clashscore for this structure is 18.

All (396) close contacts within the same asymmetric unit are listed below, sorted by their clash magnitude.

Atom-1	Atom-2	Interatomic distance (Å)	Clash overlap (Å)
1:B:92:ARG:HA	1:B:92:ARG:HE	1.35	0.89
1:D:183:PHE:HD1	1:D:268:THR:HG21	1.38	0.89
1:B:94:PRO:HA	1:B:97:LEU:HD23	1.56	0.87
1:B:305:ASN:HB3	4:B:1512:HOH:O	1.75	0.85
1:C:183:PHE:HD1	1:C:268:THR:HG21	1.42	0.85
1:D:47:ALA:HA	1:D:50:MET:HE3	1.59	0.85
1:D:107:VAL:HG13	1:D:131:VAL:HG22	1.59	0.84
1:A:8:ASN:HA	1:A:37:VAL:HG13	1.60	0.84
1:B:92:ARG:HA	1:B:92:ARG:NE	1.93	0.83
1:D:171:LEU:HD13	1:D:232:VAL:HG21	1.63	0.81
1:D:8:ASN:HA	1:D:37:VAL:HG13	1.63	0.80
1:D:30:GLU:HG3	4:D:3305:HOH:O	1.80	0.80
1:A:251:PRO:HB2	1:B:251:PRO:HB2	1.63	0.79
1:C:251:PRO:HB2	1:D:251:PRO:HB2	1.65	0.78
1:C:293:ASP:O	1:C:313:LYS:HE2	1.83	0.77
1:C:37:VAL:HB	1:C:88:VAL:HG23	1.68	0.76
1:C:21:LEU:HD11	1:C:31:ILE:HG21	1.66	0.75
1:A:215:ARG:HH21	1:D:54:THR:HG22	1.51	0.75
1:B:239:THR:HB	1:B:243:LEU:HD13	1.69	0.74
1:B:11:GLY:HA3	2:B:1362:NAD:H4B	1.69	0.74
1:B:200:GLN:NE2	1:B:249:ARG:HH11	1.84	0.74
1:D:147:GLY:H	1:D:150:HIS:CD2	2.06	0.73
1:A:147:GLY:H	1:A:150:HIS:CD2	2.06	0.73

*Continued on next page...*

*Continued from previous page...*

Atom-1	Atom-2	Interatomic distance (Å)	Clash overlap (Å)
1:D:313:LYS:O	1:D:317:GLN:HG3	1.89	0.73
1:B:8:ASN:HA	1:B:37:VAL:HG13	1.69	0.73
1:D:183:PHE:CD1	1:D:268:THR:HG21	2.22	0.73
1:A:94:PRO:HA	1:A:97:LEU:HD23	1.71	0.73
1:B:117:LYS:O	1:B:121:GLU:HG3	1.89	0.73
1:A:8:ASN:HD22	1:A:37:VAL:HG13	1.54	0.72
1:C:3:ILE:HG22	1:C:4:LYS:H	1.53	0.72
1:B:3:ILE:HB	1:B:31:ILE:HG12	1.71	0.72
1:C:124:LEU:HA	1:C:128:ALA:O	1.89	0.72
1:A:50:MET:HE1	1:A:78:LEU:HD22	1.72	0.71
1:D:64:THR:CG2	1:D:79:VAL:HB	2.20	0.71
1:C:117:LYS:O	1:C:121:GLU:HB2	1.90	0.71
1:C:108:ILE:HD11	1:C:347:VAL:HG21	1.72	0.71
1:C:196:TYR:HA	1:C:200:GLN:NE2	2.06	0.70
1:D:147:GLY:H	1:D:150:HIS:HD2	1.37	0.70
1:B:172:ALA:HB3	1:B:173:PRO:HD3	1.75	0.69
1:B:183:PHE:CD1	1:B:268:THR:HG21	2.28	0.69
1:C:183:PHE:CD1	1:C:268:THR:HG21	2.27	0.68
1:C:61:TYR:HD2	1:C:81:ASN:HB2	1.59	0.68
1:D:200:GLN:NE2	1:D:249:ARG:HH11	1.92	0.67
1:C:266:ARG:C	1:C:325:ARG:HE	1.98	0.67
1:A:3:ILE:HG22	1:A:5:VAL:HG23	1.75	0.67
1:D:196:TYR:HA	1:D:200:GLN:NE2	2.09	0.67
1:D:263:THR:HG21	4:D:3332:HOH:O	1.94	0.67
1:B:110:SER:HA	4:B:1466:HOH:O	1.94	0.67
1:B:26:LEU:HD13	1:B:348:ARG:HD3	1.76	0.67
1:A:321:PRO:HG2	4:A:449:HOH:O	1.94	0.66
1:C:64:THR:HG23	1:C:79:VAL:HB	1.77	0.66
1:D:37:VAL:HG22	2:D:1361:NAD:H2A	1.76	0.66
1:B:195:SER:HB2	1:B:252:THR:O	1.96	0.66
1:D:64:THR:HG22	1:D:79:VAL:HB	1.78	0.66
1:B:268:THR:HG22	1:B:272:GLU:OE2	1.96	0.66
1:B:107:VAL:CG1	1:B:131:VAL:HG22	2.26	0.66
1:C:105:GLU:HG3	1:C:106:TYR:H	1.60	0.65
1:D:107:VAL:CG1	1:D:131:VAL:HG22	2.26	0.65
1:B:171:LEU:HD22	1:B:175:VAL:HG23	1.79	0.65
1:B:194:HIS:NE2	3:B:1166[B]:CYX:H51	2.11	0.65
1:C:200:GLN:HE21	1:C:249:ARG:NH1	1.96	0.64
1:C:263:THR:HA	1:C:325:ARG:O	1.98	0.64
1:A:16:MET:HG3	4:A:540:HOH:O	1.96	0.64
1:B:200:GLN:HE21	1:B:249:ARG:HH11	1.45	0.64

*Continued on next page...*

*Continued from previous page...*

Atom-1	Atom-2	Interatomic distance (Å)	Clash overlap (Å)
1:C:196:TYR:HA	1:C:200:GLN:HE22	1.62	0.64
1:A:108:ILE:HD11	1:A:347:VAL:HG21	1.80	0.64
1:A:30:GLU:HG2	4:A:573:HOH:O	1.98	0.64
1:D:200:GLN:HE21	1:D:249:ARG:HH11	1.47	0.63
1:C:279:ARG:HG2	4:C:2238:HOH:O	1.99	0.63
1:A:107:VAL:HG13	1:A:131:VAL:HG22	1.81	0.63
1:B:83:HIS:HB2	4:B:1510:HOH:O	1.99	0.63
1:C:141:ALA:HA	4:C:2275:HOH:O	1.99	0.62
1:A:215:ARG:NH2	1:D:54:THR:HG22	2.14	0.62
1:A:15:ARG:O	1:A:19:GLN:HG3	2.00	0.62
1:A:94:PRO:O	1:A:97:LEU:HD23	2.00	0.62
1:B:36:VAL:HG23	1:B:36:VAL:O	2.00	0.62
1:C:8:ASN:HA	1:C:37:VAL:HG13	1.80	0.62
1:B:171:LEU:HD13	1:B:232:VAL:HG21	1.83	0.61
1:A:171:LEU:HD13	1:A:232:VAL:HG21	1.83	0.61
1:A:300:ASP:OD1	1:C:52:TYR:HB3	2.00	0.61
1:A:36:VAL:HG23	1:A:36:VAL:O	2.00	0.61
1:C:115:THR:HG23	1:C:137:ALA:HA	1.83	0.61
1:A:313:LYS:O	1:A:317:GLN:HG3	2.01	0.60
1:C:37:VAL:HB	1:C:88:VAL:CG2	2.30	0.60
1:B:106:TYR:OH	1:B:351:ALA:HA	2.01	0.60
1:A:254:ASP:O	1:A:255:VAL:HB	2.02	0.60
1:B:108:ILE:HD11	1:B:347:VAL:HG21	1.84	0.60
1:B:12:ARG:O	1:B:16:MET:HG2	2.01	0.60
1:B:183:PHE:CE1	1:B:268:THR:HG21	2.36	0.60
1:C:96:ASP:HA	4:C:2210:HOH:O	2.01	0.60
1:C:148:VAL:HG13	1:C:176:HIS:CD2	2.36	0.60
1:C:19:GLN:HG3	1:C:59:PHE:HE1	1.67	0.60
1:A:107:VAL:CG1	1:A:131:VAL:HG22	2.31	0.60
1:A:147:GLY:H	1:A:150:HIS:HD2	1.51	0.59
1:C:19:GLN:HG3	1:C:59:PHE:CE1	2.37	0.59
1:A:186:GLN:O	1:A:242:LYS:HD2	2.01	0.59
1:A:94:PRO:HA	1:A:97:LEU:CD2	2.32	0.59
1:D:263:THR:HA	1:D:325:ARG:O	2.02	0.59
1:B:194:HIS:HB3	1:B:249:ARG:HD3	1.85	0.59
1:C:309:ILE:HD12	1:C:309:ILE:N	2.18	0.58
1:C:85:ILE:HD12	1:C:85:ILE:N	2.18	0.58
1:D:171:LEU:HD22	1:D:175:VAL:HG23	1.84	0.58
1:A:121:GLU:HG3	1:A:160:VAL:HG21	1.85	0.58
1:B:54:THR:HG21	1:C:220:ASN:HD21	1.68	0.58
1:C:194:HIS:NE2	3:C:2166[A]:CYX:H51	2.18	0.58

*Continued on next page...*

*Continued from previous page...*

Atom-1	Atom-2	Interatomic distance (Å)	Clash overlap (Å)
1:B:268:THR:HG22	1:B:272:GLU:CD	2.23	0.58
1:C:339:TYR:O	1:C:343:VAL:HG23	2.04	0.58
1:A:6:GLY:O	1:A:107:VAL:HA	2.04	0.57
1:B:124:LEU:HA	1:B:128:ALA:O	2.04	0.57
1:B:8:ASN:HA	1:B:37:VAL:CG1	2.34	0.57
1:A:99:TRP:HB2	1:A:126:GLY:O	2.04	0.57
1:A:176:HIS:HE1	4:A:545:HOH:O	1.88	0.57
1:C:5:VAL:HA	1:C:106:TYR:O	2.04	0.57
1:B:142:LYS:HB3	1:B:161:VAL:HG12	1.87	0.57
1:A:171:LEU:HD22	1:A:175:VAL:HG23	1.87	0.57
1:C:130:LYS:HE3	4:C:2289:HOH:O	2.04	0.57
1:B:206:VAL:HG21	4:C:2230:HOH:O	2.04	0.56
1:B:254:ASP:O	1:B:255:VAL:HB	2.05	0.56
1:B:147:GLY:H	1:B:150:HIS:CD2	2.23	0.56
1:D:121:GLU:HA	1:D:124:LEU:HD13	1.87	0.56
1:B:144:LEU:HD22	1:B:150:HIS:HA	1.86	0.56
1:C:132:VAL:HG21	4:C:2231:HOH:O	2.05	0.56
1:A:8:ASN:HA	1:A:37:VAL:CG1	2.34	0.56
1:B:149:ASN:O	1:B:152:GLU:HB2	2.06	0.56
1:B:64:THR:HG22	1:B:79:VAL:HB	1.87	0.56
1:B:124:LEU:HD23	1:B:128:ALA:O	2.05	0.56
1:C:35:ALA:HA	1:C:85:ILE:HG23	1.86	0.56
1:B:196:TYR:HA	1:B:200:GLN:NE2	2.21	0.56
1:D:50:MET:HE1	1:D:78:LEU:HG	1.86	0.55
1:D:85:ILE:HD12	1:D:85:ILE:N	2.21	0.55
1:B:200:GLN:HE21	1:B:249:ARG:NH1	2.03	0.55
1:D:8:ASN:HD22	1:D:37:VAL:CG1	2.20	0.55
1:D:108:ILE:HD11	1:D:347:VAL:HG21	1.89	0.55
1:D:185:VAL:HG11	1:D:243:LEU:HD11	1.89	0.55
1:B:239:THR:HA	1:B:242:LYS:HD2	1.89	0.55
1:D:94:PRO:HA	1:D:97:LEU:HD23	1.89	0.55
1:A:13:ILE:HG21	4:A:566:HOH:O	2.06	0.55
1:A:310:TYR:HE1	1:A:315:THR:HG1	1.55	0.55
1:C:21:LEU:HD11	1:C:31:ILE:CG2	2.35	0.55
1:A:189:LEU:HD13	1:B:328:LYS:HB2	1.89	0.54
1:C:254:ASP:OD1	1:C:336:GLU:HG3	2.08	0.54
1:D:47:ALA:HA	1:D:50:MET:CE	2.33	0.54
1:C:108:ILE:CD1	1:C:347:VAL:HG21	2.36	0.54
1:D:254:ASP:O	1:D:255:VAL:HB	2.07	0.54
1:D:8:ASN:HD22	1:D:37:VAL:HG13	1.72	0.54
1:A:263:THR:HA	1:A:325:ARG:O	2.07	0.54

*Continued on next page...*

*Continued from previous page...*

Atom-1	Atom-2	Interatomic distance (Å)	Clash overlap (Å)
1:B:64:THR:CG2	1:B:79:VAL:HB	2.38	0.54
1:C:136:PRO:HG3	4:C:2201:HOH:O	2.07	0.54
1:B:118:ALA:O	1:B:121:GLU:HB2	2.08	0.54
1:D:65:THR:HG22	1:D:78:LEU:HD12	1.89	0.54
1:A:70:PRO:HD3	4:A:453:HOH:O	2.07	0.54
1:A:193:ILE:HG22	1:B:221:ILE:HD13	1.90	0.54
1:B:190:MET:HG3	1:B:245:GLY:HA3	1.88	0.54
1:C:149:ASN:CG	1:C:235:VAL:HG13	2.28	0.54
1:C:200:GLN:NE2	1:C:249:ARG:HH11	2.06	0.54
1:C:91:GLN:HG3	1:C:96:ASP:O	2.08	0.54
1:D:193:ILE:N	1:D:193:ILE:HD12	2.23	0.54
1:B:193:ILE:HD12	1:B:193:ILE:N	2.23	0.53
1:B:27:LEU:HD11	1:B:83:HIS:HD2	1.72	0.53
1:B:228:ALA:O	1:B:232:VAL:HG23	2.07	0.53
1:D:302:ILE:O	1:D:303:ASN:HB2	2.07	0.53
1:A:200:GLN:NE2	1:A:249:ARG:HD2	2.22	0.53
1:C:254:ASP:O	1:C:255:VAL:HB	2.09	0.53
1:D:155:PRO:HG3	1:D:353:LYS:HB3	1.91	0.53
1:C:180:LYS:NZ	4:C:2190:HOH:O	2.32	0.52
1:D:94:PRO:HA	1:D:97:LEU:CD2	2.39	0.52
1:C:105:GLU:HG3	1:C:106:TYR:N	2.24	0.52
1:C:189:LEU:CD2	1:C:244:THR:HG22	2.38	0.52
1:C:200:GLN:NE2	1:C:249:ARG:NH1	2.57	0.52
1:C:94:PRO:O	1:C:97:LEU:HD23	2.09	0.52
1:B:27:LEU:HD11	1:B:83:HIS:CD2	2.45	0.52
1:B:190:MET:HG2	1:B:229:ALA:HB2	1.91	0.52
1:B:97:LEU:HD11	4:B:1495:HOH:O	2.10	0.52
1:C:302:ILE:O	1:C:303:ASN:HB2	2.10	0.52
1:C:64:THR:CG2	1:C:79:VAL:HB	2.38	0.52
1:C:6:GLY:HA3	1:C:99:TRP:HZ3	1.74	0.52
1:A:290:GLY:HA3	1:A:306:ARG:NH1	2.25	0.52
1:B:263:THR:HA	1:B:325:ARG:O	2.10	0.52
1:B:5:VAL:HG12	1:B:6:GLY:N	2.25	0.52
1:C:212:ARG:HG2	1:D:295:GLU:HB3	1.92	0.52
1:D:124:LEU:N	1:D:124:LEU:HD12	2.25	0.52
1:A:172:ALA:HB3	1:A:173:PRO:HD3	1.91	0.51
1:B:98:PRO:O	1:B:102:LEU:HD13	2.09	0.51
1:B:321:PRO:O	1:B:322:LYS:HB2	2.10	0.51
1:A:54:THR:HG21	1:D:220:ASN:HD21	1.74	0.51
1:D:64:THR:HG23	1:D:79:VAL:HB	1.92	0.51
1:A:196:TYR:HA	1:A:200:GLN:NE2	2.26	0.51

*Continued on next page...*

*Continued from previous page...*

Atom-1	Atom-2	Interatomic distance (Å)	Clash overlap (Å)
1:B:38:ASP:HA	2:B:1362:NAD:H2A	1.91	0.51
1:C:83:HIS:ND1	1:C:84:ARG:N	2.58	0.51
1:B:37:VAL:HG21	4:B:1495:HOH:O	2.10	0.51
1:C:195:SER:HB3	1:C:252:THR:O	2.10	0.51
1:B:98:PRO:HB2	1:B:102:LEU:HD13	1.92	0.51
1:A:183:PHE:HE1	1:A:268:THR:HG1	1.59	0.51
1:C:3:ILE:HG22	1:C:4:LYS:N	2.23	0.51
1:A:16:MET:CG	4:A:540:HOH:O	2.56	0.50
1:B:254:ASP:OD1	1:B:336:GLU:HG3	2.12	0.50
1:C:200:GLN:C	1:C:201:LYS:HD2	2.32	0.50
1:B:9:GLY:HA3	1:B:111:THR:HG22	1.93	0.50
1:B:79:VAL:HG12	4:B:1487:HOH:O	2.10	0.50
1:D:194:HIS:HB3	1:D:249:ARG:HD3	1.93	0.50
1:A:218:ALA:HB1	4:A:404:HOH:O	2.11	0.50
1:B:8:ASN:HD22	1:B:37:VAL:HG13	1.75	0.50
1:B:115:THR:HG23	1:B:137:ALA:HA	1.93	0.50
1:D:307:SER:OG	1:D:342:ARG:HD2	2.11	0.50
1:C:61:TYR:HD2	1:C:81:ASN:CB	2.25	0.49
1:D:105:GLU:HG3	1:D:129:ARG:HD3	1.94	0.49
1:A:200:GLN:HE22	1:A:249:ARG:HD2	1.76	0.49
1:C:318:ASN:CG	1:D:246:MET:HB3	2.33	0.49
1:B:239:THR:HB	1:B:243:LEU:CD1	2.40	0.49
1:B:99:TRP:CE3	1:B:99:TRP:HA	2.47	0.49
1:B:249:ARG:HH21	3:B:1166[B]:CYX:P7	2.36	0.49
1:C:180:LYS:HA	1:C:180:LYS:HE3	1.94	0.49
1:B:32:ASP:HB2	1:B:83:HIS:CE1	2.48	0.49
1:C:295:GLU:HG3	1:D:211:TRP:HB2	1.95	0.49
1:A:183:PHE:CZ	1:A:272:GLU:HG2	2.47	0.48
1:A:8:ASN:ND2	1:A:37:VAL:HG13	2.24	0.48
1:A:33:VAL:O	1:A:83:HIS:HE1	1.95	0.48
1:C:172:ALA:HB3	1:C:173:PRO:HD3	1.95	0.48
1:D:305:ASN:C	1:D:305:ASN:HD22	2.16	0.48
1:B:200:GLN:NE2	1:B:249:ARG:NH1	2.58	0.48
1:C:94:PRO:HA	1:C:97:LEU:HD23	1.95	0.48
1:A:204:ASP:OD1	1:D:54:THR:HG23	2.13	0.48
1:B:171:LEU:HD12	1:B:190:MET:HE2	1.95	0.48
1:A:118:ALA:O	1:A:121:GLU:HB2	2.14	0.48
1:C:193:ILE:N	1:C:193:ILE:HD12	2.28	0.48
1:C:296:LEU:O	1:D:212:ARG:HD3	2.13	0.48
1:A:118:ALA:HA	1:A:121:GLU:OE2	2.14	0.48
1:B:98:PRO:HB2	1:B:102:LEU:CD1	2.44	0.48

*Continued on next page...*



*Continued from previous page...*

Atom-1	Atom-2	Interatomic distance (Å)	Clash overlap (Å)
1:A:185:VAL:HG11	1:A:243:LEU:HD11	1.94	0.48
1:A:190:MET:HG2	1:A:229:ALA:HB2	1.95	0.48
1:B:285:MET:HB3	1:B:289:LEU:HB3	1.95	0.48
1:A:149:ASN:CG	1:A:235:VAL:HG13	2.35	0.47
1:A:5:VAL:HG22	1:A:106:TYR:HB2	1.95	0.47
1:B:266:ARG:NH1	1:B:268:THR:HG23	2.29	0.47
1:D:200:GLN:C	1:D:201:LYS:HD2	2.34	0.47
1:C:141:ALA:HB1	1:C:160:VAL:O	2.14	0.47
1:C:8:ASN:ND2	1:C:37:VAL:HG13	2.29	0.47
1:D:12:ARG:O	1:D:16:MET:HG2	2.14	0.47
1:A:324:ARG:HD2	4:A:569:HOH:O	2.14	0.47
1:A:54:THR:CG2	1:D:220:ASN:HD21	2.28	0.47
1:A:322:LYS:NZ	1:A:322:LYS:HA	2.29	0.47
1:D:195:SER:HB3	1:D:252:THR:O	2.14	0.47
1:D:169:ASN:O	1:D:307:SER:HB3	2.14	0.47
1:D:166:CYS:HB2	1:D:333:TYR:HE2	1.79	0.47
1:A:91:GLN:HG3	1:A:97:LEU:HD13	1.97	0.47
1:C:109:GLU:HA	1:C:109:GLU:OE2	2.14	0.47
1:A:259:ASP:OD1	1:A:328:LYS:NZ	2.48	0.47
1:B:99:TRP:HE3	1:B:99:TRP:HA	1.79	0.47
1:C:171:LEU:HD22	1:C:175:VAL:HG23	1.97	0.47
1:B:61:TYR:N	1:B:61:TYR:CD1	2.83	0.47
1:C:230:LYS:HD2	4:C:2234:HOH:O	2.15	0.47
1:D:19:GLN:HE21	1:D:19:GLN:HB3	1.60	0.47
1:C:147:GLY:H	1:C:150:HIS:CD2	2.33	0.46
1:B:194:HIS:O	1:B:249:ARG:HA	2.15	0.46
1:A:295:GLU:HG3	1:B:211:TRP:HB2	1.98	0.46
1:B:281:SER:HB2	1:B:289:LEU:O	2.15	0.46
1:B:298:SER:HB2	4:B:1412:HOH:O	2.14	0.46
1:A:226:THR:HG22	1:A:246:MET:HA	1.97	0.46
1:C:113:LEU:N	4:C:2232:HOH:O	2.48	0.46
1:C:36:VAL:HG13	1:C:85:ILE:HG21	1.98	0.46
1:B:49:GLN:HA	4:B:1364:HOH:O	2.15	0.46
1:C:21:LEU:C	1:C:21:LEU:HD23	2.36	0.46
1:D:242:LYS:O	1:D:243:LEU:HD12	2.15	0.46
1:C:222:ILE:HA	1:C:223:PRO:HD3	1.82	0.46
1:C:283:THR:OG1	1:C:284:TYR:N	2.44	0.46
1:A:183:PHE:CE1	1:A:272:GLU:HG2	2.51	0.46
1:C:266:ARG:HA	1:C:325:ARG:HH21	1.81	0.46
1:A:106:TYR:OH	1:A:351:ALA:HA	2.16	0.46
1:A:12:ARG:HG2	1:A:12:ARG:HH11	1.80	0.46

*Continued on next page...*



*Continued from previous page...*

Atom-1	Atom-2	Interatomic distance (Å)	Clash overlap (Å)
1:A:266:ARG:HD2	1:A:267:ASP:O	2.16	0.46
1:D:342:ARG:NE	1:D:342:ARG:HA	2.30	0.46
1:D:122:GLY:HA2	1:D:125:ARG:NH1	2.31	0.45
1:B:189:LEU:HD23	1:B:189:LEU:HA	1.82	0.45
1:B:305:ASN:ND2	1:B:305:ASN:H	2.13	0.45
1:A:238:SER:O	1:A:242:LYS:HE2	2.17	0.45
1:A:47:ALA:HA	1:A:50:MET:HE3	1.98	0.45
1:C:163:ASN:O	1:C:164:ALA:HB3	2.16	0.45
1:C:268:THR:O	1:C:324:ARG:HG2	2.17	0.45
1:B:328:LYS:NZ	4:B:1386:HOH:O	2.49	0.45
1:B:239:THR:O	1:B:242:LYS:HB2	2.16	0.45
1:D:200:GLN:HE21	1:D:249:ARG:NH1	2.13	0.45
1:A:38:ASP:OD1	1:A:39:MET:N	2.49	0.45
1:B:117:LYS:HB2	1:B:141:ALA:HB2	1.99	0.45
1:A:263:THR:HG23	1:B:326:PHE:CE1	2.52	0.45
1:C:307:SER:OG	1:C:342:ARG:HD2	2.16	0.45
1:A:99:TRP:CE3	1:A:99:TRP:HA	2.52	0.44
1:B:115:THR:CG2	1:B:137:ALA:HA	2.47	0.44
1:C:105:GLU:CG	1:C:106:TYR:H	2.29	0.44
1:D:124:LEU:HA	1:D:128:ALA:O	2.16	0.44
1:B:51:ARG:HG3	4:B:1409:HOH:O	2.16	0.44
1:D:200:GLN:HB3	4:D:3171:HOH:O	2.17	0.44
1:C:50:MET:O	1:C:59:PHE:HB2	2.17	0.44
1:B:309:ILE:N	1:B:309:ILE:HD12	2.33	0.44
1:D:40:ASN:OD1	1:D:42:ASP:HB3	2.17	0.44
1:A:85:ILE:HD12	1:A:85:ILE:N	2.32	0.44
1:B:34:VAL:HG11	1:B:102:LEU:HB3	1.99	0.44
1:B:13:ILE:HG12	2:B:1362:NAD:O2N	2.17	0.44
1:D:37:VAL:CG2	1:D:90:ALA:HA	2.48	0.44
1:B:12:ARG:HG3	1:B:12:ARG:HH11	1.82	0.44
1:B:196:TYR:HA	1:B:200:GLN:HE22	1.80	0.44
1:B:25:GLY:HA2	4:B:1464:HOH:O	2.17	0.44
1:C:10:PHE:CE2	1:C:15:ARG:HG2	2.52	0.44
1:C:134:SER:O	1:C:135:ALA:HB2	2.18	0.44
1:C:8:ASN:HD22	1:C:37:VAL:HG13	1.82	0.44
1:D:149:ASN:CG	1:D:235:VAL:HG13	2.38	0.44
1:A:246:MET:HG2	1:B:328:LYS:HE2	1.99	0.44
1:B:54:THR:CG2	1:C:220:ASN:HD21	2.30	0.44
1:A:180:LYS:HE3	1:A:284:TYR:CE2	2.53	0.43
1:A:353:LYS:HE2	4:A:544:HOH:O	2.18	0.43
1:B:200:GLN:HB3	4:B:1375:HOH:O	2.18	0.43

*Continued on next page...*

*Continued from previous page...*

Atom-1	Atom-2	Interatomic distance (Å)	Clash overlap (Å)
1:D:2:PRO:HG3	1:D:29:THR:O	2.17	0.43
1:D:254:ASP:O	1:D:255:VAL:CB	2.67	0.43
1:C:119:ALA:C	1:C:121:GLU:H	2.21	0.43
1:D:95:ALA:HA	1:D:122:GLY:O	2.19	0.43
1:D:107:VAL:HG11	1:D:123:HIS:HB3	2.01	0.43
1:C:43:ALA:HB2	1:C:76:ASP:HA	2.01	0.43
1:A:36:VAL:CG2	1:A:36:VAL:O	2.66	0.43
1:B:10:PHE:CE2	1:B:15:ARG:HG2	2.53	0.43
1:B:290:GLY:O	1:B:309:ILE:HA	2.18	0.43
1:B:259:ASP:OD1	1:B:328:LYS:HE3	2.18	0.43
1:B:212:ARG:HB3	1:B:222:ILE:HG23	2.00	0.43
1:B:342:ARG:HA	1:B:342:ARG:NE	2.34	0.43
1:A:270:ILE:HD11	1:A:315:THR:CG2	2.49	0.43
1:B:108:ILE:CD1	1:B:347:VAL:HG21	2.48	0.43
1:A:254:ASP:O	1:A:255:VAL:CB	2.67	0.42
1:B:30:GLU:O	1:B:31:ILE:HG13	2.18	0.42
1:B:350:MET:O	1:B:351:ALA:C	2.56	0.42
1:C:19:GLN:NE2	4:C:2240:HOH:O	2.51	0.42
1:D:268:THR:HB	1:D:269:SER:H	1.65	0.42
1:A:180:LYS:HE2	4:A:545:HOH:O	2.18	0.42
1:D:50:MET:CE	1:D:78:LEU:HG	2.48	0.42
1:A:99:TRP:HE3	1:A:99:TRP:HA	1.84	0.42
1:B:180:LYS:HD3	1:B:284:TYR:CE2	2.54	0.42
1:C:170:CYS:HA	1:C:308:SER:HB2	2.02	0.42
1:C:77:THR:HG23	1:C:85:ILE:O	2.19	0.42
1:A:136:PRO:CG	1:A:165:SER:HB3	2.49	0.42
1:B:183:PHE:HD1	1:B:268:THR:HG21	1.76	0.42
1:D:193:ILE:H	1:D:193:ILE:HD12	1.82	0.42
1:C:171:LEU:HD13	1:C:232:VAL:HG21	2.01	0.42
1:C:61:TYR:CD2	1:C:81:ASN:HB2	2.45	0.42
1:D:149:ASN:HA	4:D:3197:HOH:O	2.19	0.42
1:A:181:GLU:OE2	1:A:279:ARG:NH2	2.52	0.42
1:B:256:SER:HB2	1:B:333:TYR:CZ	2.54	0.42
1:B:54:THR:HG23	1:C:204:ASP:OD2	2.20	0.42
1:A:55:VAL:HG13	1:A:56:HIS:CD2	2.55	0.42
1:B:186:GLN:HG3	1:B:264:ALA:O	2.19	0.42
1:B:305:ASN:N	1:B:305:ASN:HD22	2.18	0.42
1:C:45:TYR:O	1:C:49:GLN:HG3	2.19	0.42
1:C:298:SER:HB3	1:D:221:ILE:HB	2.02	0.42
1:D:314:ALA:O	1:D:318:ASN:ND2	2.52	0.42
1:D:93:ASN:HA	1:D:94:PRO:HD3	1.93	0.42

*Continued on next page...*

*Continued from previous page...*

Atom-1	Atom-2	Interatomic distance (Å)	Clash overlap (Å)
1:B:242:LYS:C	1:B:243:LEU:HD12	2.40	0.42
1:B:9:GLY:CA	1:B:111:THR:HG22	2.48	0.42
1:D:172:ALA:HB3	1:D:173:PRO:HD3	2.01	0.42
1:B:94:PRO:HB3	1:B:123:HIS:CG	2.55	0.41
1:B:169:ASN:O	1:B:307:SER:HB3	2.20	0.41
1:C:208:VAL:HG13	4:C:2283:HOH:O	2.18	0.41
1:C:50:MET:HB3	4:C:2276:HOH:O	2.19	0.41
1:D:285:MET:HB3	1:D:289:LEU:HB3	2.02	0.41
1:B:305:ASN:N	1:B:305:ASN:ND2	2.68	0.41
1:C:194:HIS:O	1:C:249:ARG:HA	2.20	0.41
1:A:196:TYR:HA	1:A:200:GLN:HE22	1.85	0.41
1:B:171:LEU:HD22	1:B:175:VAL:CG2	2.49	0.41
1:B:348:ARG:HD2	4:B:1461:HOH:O	2.19	0.41
1:A:94:PRO:C	1:A:97:LEU:HD23	2.41	0.41
1:B:94:PRO:HB2	1:B:122:GLY:C	2.41	0.41
1:C:113:LEU:O	1:C:113:LEU:HG	2.20	0.41
1:C:343:VAL:O	1:C:347:VAL:HG23	2.20	0.41
1:A:200:GLN:HB3	4:A:366:HOH:O	2.20	0.41
1:A:204:ASP:OD1	1:D:54:THR:CG2	2.69	0.41
1:D:177:VAL:HG11	1:D:277:LEU:HD23	2.03	0.41
1:A:74:LYS:HE2	4:A:489:HOH:O	2.20	0.41
1:B:154:ASN:HB3	1:B:157:GLU:HB3	2.02	0.41
1:A:136:PRO:HG3	1:A:165:SER:HB3	2.03	0.41
1:A:94:PRO:CA	1:A:97:LEU:HD23	2.45	0.41
1:C:295:GLU:HB3	1:D:212:ARG:HG2	2.02	0.41
1:C:256:SER:HB2	1:C:333:TYR:CZ	2.55	0.41
1:B:146:MET:HB2	1:B:342:ARG:HD3	2.02	0.41
1:C:112:GLY:N	4:C:2232:HOH:O	2.54	0.41
1:A:97:LEU:N	1:A:97:LEU:HD22	2.36	0.41
1:C:169:ASN:O	1:C:307:SER:HB3	2.21	0.41
1:D:163:ASN:O	1:D:164:ALA:HB3	2.21	0.41
1:C:186:GLN:HB2	1:C:263:THR:OG1	2.21	0.40
1:A:204:ASP:OD2	1:D:54:THR:HG23	2.21	0.40
1:B:163:ASN:O	1:B:164:ALA:HB3	2.20	0.40
1:B:190:MET:O	1:B:190:MET:HG3	2.21	0.40
1:C:38:ASP:CG	1:C:39:MET:H	2.24	0.40
1:D:124:LEU:H	1:D:124:LEU:HD12	1.84	0.40
1:A:37:VAL:CG2	1:A:90:ALA:HA	2.51	0.40
1:C:142:LYS:HG2	1:C:158:HIS:CE1	2.56	0.40
1:D:10:PHE:CZ	1:D:15:ARG:HG3	2.56	0.40
1:A:121:GLU:CG	1:A:160:VAL:HG21	2.48	0.40

*Continued on next page...*

Continued from previous page...

Atom-1	Atom-2	Interatomic distance (Å)	Clash overlap (Å)
1:C:130:LYS:HZ3	1:C:159:HIS:CD2	2.39	0.40
1:D:11:GLY:HA3	2:D:1361:NAD:O5B	2.22	0.40
1:B:118:ALA:HA	1:B:121:GLU:CD	2.42	0.40
1:B:94:PRO:CA	1:B:97:LEU:HD23	2.39	0.40

There are no symmetry-related clashes.

## 5.3 Torsion angles [i](#)

### 5.3.1 Protein backbone [i](#)

In the following table, the Percentiles column shows the percent Ramachandran outliers of the chain as a percentile score with respect to all X-ray entries followed by that with respect to entries of similar resolution.

The Analysed column shows the number of residues for which the backbone conformation was analysed, and the total number of residues.

Mol	Chain	Analysed	Favoured	Allowed	Outliers	Percentiles	
1	A	357/359 (99%)	331 (93%)	23 (6%)	3 (1%)	22	39
1	B	358/359 (100%)	323 (90%)	28 (8%)	7 (2%)	9	14
1	C	358/359 (100%)	306 (86%)	45 (13%)	7 (2%)	9	14
1	D	357/359 (99%)	331 (93%)	24 (7%)	2 (1%)	28	48
All	All	1430/1436 (100%)	1291 (90%)	120 (8%)	19 (1%)	14	25

All (19) Ramachandran outliers are listed below:

Mol	Chain	Res	Type
1	B	73	ALA
1	C	73	ALA
1	A	73	ALA
1	A	255	VAL
1	B	42	ASP
1	B	157	GLU
1	B	255	VAL
1	C	3	ILE
1	C	39	MET
1	C	157	GLU
1	D	255	VAL

Continued on next page...

*Continued from previous page...*

Mol	Chain	Res	Type
1	B	335	ASN
1	C	255	VAL
1	B	210	ASP
1	C	164	ALA
1	C	76	ASP
1	D	237	PRO
1	A	98	PRO
1	B	251	PRO

### 5.3.2 Protein sidechains ⓘ

In the following table, the Percentiles column shows the percent sidechain outliers of the chain as a percentile score with respect to all X-ray entries followed by that with respect to entries of similar resolution.

The Analysed column shows the number of residues for which the sidechain conformation was analysed, and the total number of residues.

Mol	Chain	Analysed	Rotameric	Outliers	Percentiles	
1	A	296/296 (100%)	287 (97%)	9 (3%)	46	74
1	B	297/296 (100%)	287 (97%)	10 (3%)	42	69
1	C	297/296 (100%)	287 (97%)	10 (3%)	42	69
1	D	296/296 (100%)	283 (96%)	13 (4%)	33	57
All	All	1186/1184 (100%)	1144 (96%)	42 (4%)	42	68

All (42) residues with a non-rotameric sidechain are listed below:

Mol	Chain	Res	Type
1	A	12	ARG
1	A	23	GLU
1	A	37	VAL
1	A	92	ARG
1	A	102	LEU
1	A	171	LEU
1	A	190	MET
1	A	240	GLN
1	A	322	LYS
1	B	16	MET
1	B	55	VAL
1	B	92	ARG
1	B	105	GLU

*Continued on next page...*

*Continued from previous page...*

Mol	Chain	Res	Type
1	B	166[A]	CYS
1	B	166[B]	CYS
1	B	171	LEU
1	B	190	MET
1	B	268	THR
1	B	305	ASN
1	C	8	ASN
1	C	166[A]	CYS
1	C	166[B]	CYS
1	C	171	LEU
1	C	180	LYS
1	C	190	MET
1	C	238	SER
1	C	305	ASN
1	C	306	ARG
1	C	354	ASP
1	D	37	VAL
1	D	54	THR
1	D	55	VAL
1	D	66	THR
1	D	78	LEU
1	D	107	VAL
1	D	113	LEU
1	D	166	CYS
1	D	171	LEU
1	D	190	MET
1	D	201	LYS
1	D	305	ASN
1	D	355	ARG

Some sidechains can be flipped to improve hydrogen bonding and reduce clashes. All (32) such sidechains are listed below:

Mol	Chain	Res	Type
1	A	8	ASN
1	A	19	GLN
1	A	150	HIS
1	A	159	HIS
1	A	176	HIS
1	A	200	GLN
1	B	8	ASN
1	B	19	GLN
1	B	83	HIS

*Continued on next page...*

*Continued from previous page...*

Mol	Chain	Res	Type
1	B	150	HIS
1	B	176	HIS
1	B	200	GLN
1	B	305	ASN
1	C	8	ASN
1	C	19	GLN
1	C	49	GLN
1	C	150	HIS
1	C	151	HIS
1	C	159	HIS
1	C	176	HIS
1	C	200	GLN
1	C	305	ASN
1	D	8	ASN
1	D	19	GLN
1	D	81	ASN
1	D	150	HIS
1	D	151	HIS
1	D	159	HIS
1	D	176	HIS
1	D	200	GLN
1	D	305	ASN
1	D	341	HIS

### 5.3.3 RNA ⓘ

There are no RNA molecules in this entry.

### 5.4 Non-standard residues in protein, DNA, RNA chains ⓘ

There are no non-standard protein/DNA/RNA residues in this entry.

### 5.5 Carbohydrates ⓘ

There are no carbohydrates in this entry.

### 5.6 Ligand geometry ⓘ

8 ligands are modelled in this entry.

In the following table, the Counts columns list the number of bonds (or angles) for which Mogul statistics could be retrieved, the number of bonds (or angles) that are observed in the model and the number of bonds (or angles) that are defined in the chemical component dictionary. The Link column lists molecule types, if any, to which the group is linked. The Z score for a bond length (or angle) is the number of standard deviations the observed value is removed from the expected value. A bond length (or angle) with  $|Z| > 2$  is considered an outlier worth inspection. RMSZ is the root-mean-square of all Z scores of the bond lengths (or angles).

Mol	Type	Chain	Res	Link	Bond lengths			Bond angles		
					Counts	RMSZ	# Z  > 2	Counts	RMSZ	# Z  > 2
3	CYX	B	1166[A]	1	9,9,9	2.84	6 (66%)	8,12,12	0.85	0
3	CYX	B	1166[B]	1	9,9,9	2.80	5 (55%)	8,12,12	0.91	0
2	NAD	B	1362	-	41,48,48	1.54	5 (12%)	43,73,73	1.85	8 (18%)
2	NAD	C	1360	-	41,48,48	1.41	5 (12%)	43,73,73	1.83	8 (18%)
3	CYX	C	2166[A]	1	9,9,9	2.76	5 (55%)	8,12,12	0.92	0
3	CYX	C	2166[B]	1	9,9,9	2.73	5 (55%)	8,12,12	0.93	0
2	NAD	D	1361	-	41,48,48	1.47	5 (12%)	43,73,73	1.81	8 (18%)
3	CYX	D	3166	1	9,9,9	2.86	6 (66%)	8,12,12	0.75	0

In the following table, the Chirals column lists the number of chiral outliers, the number of chiral centers analysed, the number of these observed in the model and the number defined in the chemical component dictionary. Similar counts are reported in the Torsion and Rings columns. '-' means no outliers of that kind were identified.

Mol	Type	Chain	Res	Link	Chirals	Torsions	Rings
3	CYX	B	1166[A]	1	-	0/7/8/8	0/0/0/0
3	CYX	B	1166[B]	1	-	1/7/8/8	0/0/0/0
2	NAD	B	1362	-	-	0/22/62/62	0/5/5/5
2	NAD	C	1360	-	-	0/22/62/62	0/5/5/5
3	CYX	C	2166[A]	1	-	0/7/8/8	0/0/0/0
3	CYX	C	2166[B]	1	-	0/7/8/8	0/0/0/0
2	NAD	D	1361	-	-	0/22/62/62	0/5/5/5
3	CYX	D	3166	1	-	0/7/8/8	0/0/0/0

All (42) bond length outliers are listed below:

Mol	Chain	Res	Type	Atoms	Z	Observed(Å)	Ideal(Å)
3	B	1166[B]	CYX	P7-C6	-3.90	1.75	1.78
3	C	2166[B]	CYX	P7-C6	-3.73	1.75	1.78
3	B	1166[A]	CYX	P7-C6	-3.69	1.75	1.78
3	C	2166[A]	CYX	P7-C6	-3.41	1.75	1.78
3	D	3166	CYX	P7-C6	-3.12	1.75	1.78
3	B	1166[A]	CYX	C5-C2	2.02	1.54	1.51

*Continued on next page...*



*Continued from previous page...*

Mol	Chain	Res	Type	Atoms	Z	Observed(Å)	Ideal(Å)
3	D	3166	CYX	C5-C2	2.08	1.54	1.51
2	D	1361	NAD	C2A-N1A	2.30	1.38	1.33
2	C	1360	NAD	C2A-N1A	2.32	1.38	1.33
2	B	1362	NAD	C2A-N1A	2.46	1.38	1.33
3	C	2166[B]	CYX	P7-O8	2.49	1.60	1.54
3	B	1166[A]	CYX	P7-O8	2.55	1.60	1.54
3	B	1166[A]	CYX	P7-O9	2.63	1.61	1.54
3	C	2166[B]	CYX	C1-C2	2.68	1.54	1.46
3	D	3166	CYX	P7-O9	2.72	1.61	1.54
3	C	2166[A]	CYX	P7-O8	2.74	1.61	1.54
3	C	2166[B]	CYX	P7-O9	2.74	1.61	1.54
3	C	2166[A]	CYX	C1-C2	2.75	1.54	1.46
3	B	1166[B]	CYX	P7-O8	2.78	1.61	1.54
3	C	2166[A]	CYX	P7-O9	2.82	1.61	1.54
3	B	1166[B]	CYX	P7-O9	2.85	1.61	1.54
3	D	3166	CYX	P7-O8	2.86	1.61	1.54
3	B	1166[B]	CYX	C1-C2	2.87	1.54	1.46
2	B	1362	NAD	C4N-C3N	2.92	1.44	1.39
3	D	3166	CYX	C1-C2	2.93	1.54	1.46
2	C	1360	NAD	C4N-C3N	3.05	1.44	1.39
2	D	1361	NAD	O4B-C1B	3.11	1.45	1.41
3	B	1166[A]	CYX	C1-C2	3.21	1.55	1.46
2	C	1360	NAD	O4B-C1B	3.33	1.45	1.41
2	D	1361	NAD	C6N-N1N	3.40	1.44	1.35
2	C	1360	NAD	C6N-N1N	3.43	1.44	1.35
2	D	1361	NAD	C4N-C3N	3.48	1.45	1.39
2	B	1362	NAD	C6N-N1N	3.78	1.45	1.35
2	B	1362	NAD	O4B-C1B	3.92	1.46	1.41
2	C	1360	NAD	C3N-C7N	4.68	1.57	1.50
2	B	1362	NAD	C3N-C7N	4.74	1.57	1.50
3	B	1166[B]	CYX	P7-O10	4.88	1.60	1.50
3	C	2166[B]	CYX	P7-O10	4.97	1.61	1.50
3	B	1166[A]	CYX	P7-O10	5.11	1.61	1.50
3	C	2166[A]	CYX	P7-O10	5.16	1.61	1.50
2	D	1361	NAD	C3N-C7N	5.22	1.58	1.50
3	D	3166	CYX	P7-O10	5.32	1.61	1.50

All (24) bond angle outliers are listed below:

Mol	Chain	Res	Type	Atoms	Z	Observed(°)	Ideal(°)
2	B	1362	NAD	C5N-C4N-C3N	-5.12	114.33	120.35
2	C	1360	NAD	C5N-C4N-C3N	-5.00	114.47	120.35

*Continued on next page...*

Continued from previous page...

Mol	Chain	Res	Type	Atoms	Z	Observed(°)	Ideal(°)
2	D	1361	NAD	C5N-C4N-C3N	-4.99	114.48	120.35
2	C	1360	NAD	C5N-C6N-N1N	-4.33	113.74	120.40
2	B	1362	NAD	C5N-C6N-N1N	-4.29	113.80	120.40
2	D	1361	NAD	C5N-C6N-N1N	-4.10	114.10	120.40
2	B	1362	NAD	C4N-C3N-C7N	-3.85	110.83	121.07
2	D	1361	NAD	C4N-C3N-C7N	-3.79	110.99	121.07
2	C	1360	NAD	C4N-C3N-C7N	-3.77	111.05	121.07
2	B	1362	NAD	N3A-C2A-N1A	-3.53	125.78	128.86
2	D	1361	NAD	N3A-C2A-N1A	-3.43	125.87	128.86
2	C	1360	NAD	N3A-C2A-N1A	-3.40	125.89	128.86
2	B	1362	NAD	C4A-C5A-N7A	2.09	111.43	109.41
2	C	1360	NAD	C4A-C5A-N7A	2.33	111.66	109.41
2	D	1361	NAD	C4A-C5A-N7A	2.37	111.70	109.41
2	C	1360	NAD	C2N-C3N-C7N	2.60	126.89	119.34
2	B	1362	NAD	C2N-C3N-C7N	2.60	126.91	119.34
2	D	1361	NAD	C2N-C3N-C7N	2.64	127.00	119.34
2	D	1361	NAD	C2N-C3N-C4N	3.28	122.00	118.26
2	C	1360	NAD	C2N-C3N-C4N	3.30	122.02	118.26
2	B	1362	NAD	C2N-C3N-C4N	3.50	122.26	118.26
2	D	1361	NAD	C6N-C5N-C4N	5.09	127.11	119.44
2	C	1360	NAD	C6N-C5N-C4N	5.13	127.18	119.44
2	B	1362	NAD	C6N-C5N-C4N	5.16	127.23	119.44

There are no chirality outliers.

All (1) torsion outliers are listed below:

Mol	Chain	Res	Type	Atoms
3	B	1166[B]	CYX	O3-C1-C2-C5

There are no ring outliers.

4 monomers are involved in 8 short contacts:

Mol	Chain	Res	Type	Clashes	Symm-Clashes
3	B	1166[B]	CYX	2	0
2	B	1362	NAD	3	0
3	C	2166[A]	CYX	1	0
2	D	1361	NAD	2	0

## 5.7 Other polymers ⓘ

There are no such residues in this entry.

## 5.8 Polymer linkage issues ⓘ

There are no chain breaks in this entry.

## 6 Fit of model and data ⓘ

### 6.1 Protein, DNA and RNA chains ⓘ

In the following table, the column labelled ‘#RSRZ > 2’ contains the number (and percentage) of RSRZ outliers, followed by percent RSRZ outliers for the chain as percentile scores relative to all X-ray entries and entries of similar resolution. The OWAB column contains the minimum, median, 95<sup>th</sup> percentile and maximum values of the occupancy-weighted average B-factor per residue. The column labelled ‘Q < 0.9’ lists the number of (and percentage) of residues with an average occupancy less than 0.9.

Mol	Chain	Analysed	<RSRZ>	#RSRZ>2	OWAB(Å <sup>2</sup> )	Q<0.9
1	A	359/359 (100%)	-0.30	8 (2%) 62 64	6, 23, 45, 67	6 (1%)
1	B	359/359 (100%)	-0.04	17 (4%) 32 34	5, 26, 66, 89	17 (4%)
1	C	359/359 (100%)	0.37	49 (13%) 3 3	11, 35, 87, 101	31 (8%)
1	D	359/359 (100%)	-0.42	3 (0%) 86 86	9, 22, 41, 58	5 (1%)
All	All	1436/1436 (100%)	-0.10	77 (5%) 26 27	5, 25, 67, 101	59 (4%)

All (77) RSRZ outliers are listed below:

Mol	Chain	Res	Type	RSRZ
1	B	1	MET	7.0
1	C	71	SER	6.2
1	C	72	VAL	5.8
1	C	359	LEU	5.7
1	A	1	MET	5.2
1	C	113	LEU	5.0
1	D	1	MET	4.9
1	B	71	SER	4.9
1	C	73	ALA	4.3
1	C	357	ALA	4.2
1	A	70	PRO	4.0
1	B	357	ALA	4.0
1	C	120	ALA	4.0
1	B	72	VAL	3.9
1	C	125	ARG	3.8
1	C	119	ALA	3.8
1	C	97	LEU	3.7
1	C	156	SER	3.6
1	A	73	ALA	3.6
1	B	92	ARG	3.5
1	C	70	PRO	3.5

*Continued on next page...*

*Continued from previous page...*

Mol	Chain	Res	Type	RSRZ
1	C	118	ALA	3.5
1	B	70	PRO	3.5
1	B	156	SER	3.3
1	C	104	VAL	3.3
1	A	359	LEU	3.3
1	D	359	LEU	3.3
1	C	90	ALA	3.3
1	C	100	GLY	3.2
1	C	128	ALA	3.2
1	C	138	SER	3.1
1	C	103	GLY	3.1
1	C	1	MET	3.0
1	B	100	GLY	3.0
1	A	69	SER	3.0
1	C	68	SER	3.0
1	C	7	ILE	2.9
1	A	355	ARG	2.9
1	B	124	LEU	2.9
1	C	66	THR	2.9
1	A	71	SER	2.8
1	B	356	SER	2.8
1	C	2	PRO	2.8
1	C	101	LYS	2.7
1	C	126	GLY	2.7
1	B	359	LEU	2.7
1	C	157	GLU	2.7
1	C	29	THR	2.6
1	C	3	ILE	2.6
1	C	115	THR	2.6
1	B	69	SER	2.6
1	B	208	VAL	2.5
1	C	98	PRO	2.5
1	C	356	SER	2.5
1	B	2	PRO	2.5
1	C	102	LEU	2.5
1	C	96	ASP	2.5
1	C	124	LEU	2.5
1	C	92	ARG	2.5
1	C	116	ALA	2.5
1	C	355	ARG	2.4
1	A	39	MET	2.4
1	C	39	MET	2.4

*Continued on next page...*

*Continued from previous page...*

Mol	Chain	Res	Type	RSRZ
1	C	159	HIS	2.4
1	C	132	VAL	2.4
1	D	140	GLY	2.3
1	B	126	GLY	2.3
1	C	99	TRP	2.3
1	C	36	VAL	2.3
1	C	108	ILE	2.3
1	B	83	HIS	2.2
1	C	5	VAL	2.2
1	C	131	VAL	2.2
1	B	103	GLY	2.2
1	C	38	ASP	2.0
1	C	28	GLY	2.0
1	C	324	ARG	2.0

## 6.2 Non-standard residues in protein, DNA, RNA chains [i](#)

There are no non-standard protein/DNA/RNA residues in this entry.

## 6.3 Carbohydrates [i](#)

There are no carbohydrates in this entry.

## 6.4 Ligands [i](#)

In the following table, the Atoms column lists the number of modelled atoms in the group and the number defined in the chemical component dictionary. LLDF column lists the quality of electron density of the group with respect to its neighbouring residues in protein, DNA or RNA chains. The B-factors column lists the minimum, median, 95<sup>th</sup> percentile and maximum values of B factors of atoms in the group. The column labelled 'Q < 0.9' lists the number of atoms with occupancy less than 0.9.

Mol	Type	Chain	Res	Atoms	RSCC	RSR	LLDF	B-factors(Å <sup>2</sup> )	Q<0.9
3	CYX	C	2166[B]	10/10	0.79	0.35	13.78	35,38,40,41	10
3	CYX	C	2166[A]	10/10	0.79	0.35	8.64	42,45,48,48	10
3	CYX	D	3166	10/10	0.87	0.26	6.82	39,44,50,51	0
3	CYX	B	1166[A]	10/10	0.73	0.40	6.64	30,32,36,38	10
3	CYX	B	1166[B]	10/10	0.73	0.40	6.09	43,48,54,54	10
2	NAD	B	1362	44/44	0.69	0.39	3.07	30,49,56,56	43
2	NAD	C	1360	44/44	0.82	0.28	0.98	22,28,31,33	44

*Continued on next page...*

*Continued from previous page...*

Mol	Type	Chain	Res	Atoms	RSCC	RSR	LLDF	B-factors( $\text{\AA}^2$ )	Q<0.9
2	NAD	D	1361	44/44	0.97	0.12	-0.14	22,26,29,30	0

## 6.5 Other polymers [i](#)

There are no such residues in this entry.