



Full wwPDB X-ray Structure Validation Report ⓘ

Feb 13, 2017 – 03:53 am GMT

PDB ID : 1MOQ
Title : ISOMERASE DOMAIN OF GLUCOSAMINE 6-PHOSPHATE SYNTHASE
COMPLEXED WITH GLUCOSAMINE 6-PHOSPHATE
Authors : Teplyakov, A.
Deposited on : 1997-04-11
Resolution : 1.57 Å(reported)

This is a Full wwPDB X-ray Structure Validation Report for a publicly released PDB entry.

We welcome your comments at validation@mail.wwpdb.org

A user guide is available at

<http://wwpdb.org/validation/2016/XrayValidationReportHelp>

with specific help available everywhere you see the ⓘ symbol.

The following versions of software and data (see [references ⓘ](#)) were used in the production of this report:

MolProbity : 4.02b-467
Mogul : 1.7.2 (RC1), CSD as538be (2017)
Xtriage (Phenix) : 1.9-1692
EDS : trunk28620
Percentile statistics : 20161228.v01 (using entries in the PDB archive December 28th 2016)
Refmac : 5.8.0135
CCP4 : 6.5.0
Ideal geometry (proteins) : Engh & Huber (2001)
Ideal geometry (DNA, RNA) : Parkinson et al. (1996)
Validation Pipeline (wwPDB-VP) : recalc28949

i

X-RAY DIFFRACTION

A.

the following graphic. The table shows the number of entries on which the scores are based.

 $(\# \text{Entries}, \text{resolution range}(\text{\AA}))$

The upper red bar (where present) indicates the fraction of residues that have poor fit to the electron density. The numeric value is given above the bar.

Quality of chain

ria:

Mol	Type	Chain	Res	Chirality	Geometry	Clashes	Electron density
3	SO4	A	612	-	-	-	X
3	SO4	A	613	-	-	-	X
6	MRD	A	611	-	-	-	X

2 Entry composition [i](#)

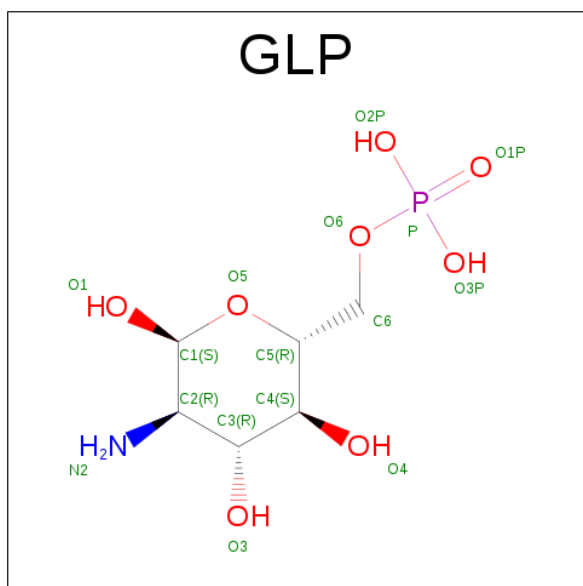
There are 7 unique types of molecules in this entry. The entry contains 3303 atoms, of which 0 are hydrogens and 0 are deuteriums.

In the tables below, the ZeroOcc column contains the number of atoms modelled with zero occupancy, the AltConf column contains the number of residues with at least one atom in alternate conformation and the Trace column contains the number of residues modelled with at most 2 atoms.

- Molecule 1 is a protein called GLUCOSAMINE 6-PHOSPHATE SYNTHASE.

Mol	Chain	Residues	Atoms					ZeroOcc	AltConf	Trace
			Total	C	N	O	S			
1	A	366	2825	1786	483	544	12	0	2	0

- Molecule 2 is SUGAR (GLUCOSAMINE 6-PHOSPHATE) (three-letter code: GLP) (formula: C₆H₁₄NO₈P).



Mol	Chain	Residues	Atoms					ZeroOcc	AltConf
			Total	C	N	O	P		
2	A	1	16	6	1	8	1	0	0

- Molecule 3 is SULFATE ION (three-letter code: SO4) (formula: O₄S).



Mol	Chain	Residues	Atoms			ZeroOcc	AltConf
3	A	1	Total	O	S	0	0
			5	4	1		
3	A	1	Total	O	S	0	0
			5	4	1		
3	A	1	Total	O	S	0	0
			5	4	1		
3	A	1	Total	O	S	0	0
			5	4	1		
3	A	1	Total	O	S	0	0
			5	4	1		

- Molecule 4 is SODIUM ION (three-letter code: NA) (formula: Na).

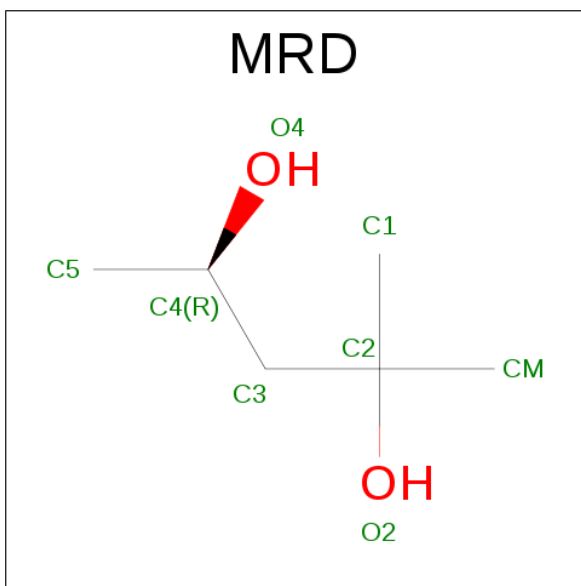
Mol	Chain	Residues	Atoms		ZeroOcc	AltConf
4	A	1	Total	Na	0	0
			1	1		

- Molecule 5 is 2-(N-MORPHOLINO)-ETHANESULFONIC ACID (three-letter code: MES) (formula: C₆H₁₃NO₄S).



Mol	Chain	Residues	Atoms					ZeroOcc	AltConf
5	A	1	Total	C	N	O	S	0	0
			12	6	1	4	1		

- Molecule 6 is (4R)-2-METHYLPENTANE-2,4-DIOL (three-letter code: MRD) (formula: $C_6H_{14}O_2$).



Mol	Chain	Residues	Atoms			ZeroOcc	AltConf
6	A	1	Total	C	O	0	0
			8	6	2		

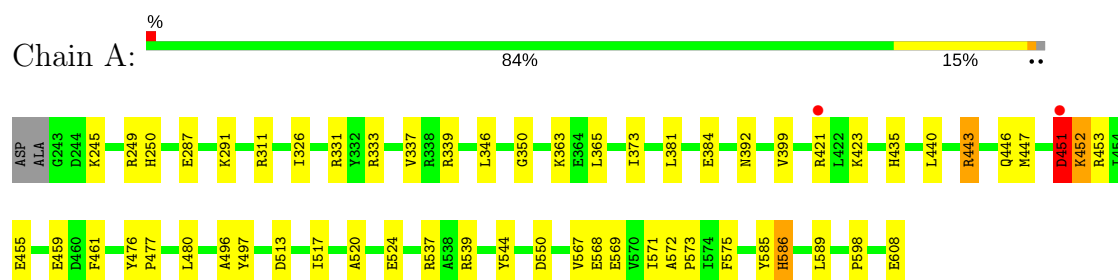
- Molecule 7 is water.

Mol	Chain	Residues	Atoms		ZeroOcc	AltConf
7	A	416	Total 416	O 416	0	0

3 Residue-property plots

These plots are drawn for all protein, RNA and DNA chains in the entry. The first graphic for a chain summarises the proportions of the various outlier classes displayed in the second graphic. The second graphic shows the sequence view annotated by issues in geometry and electron density. Residues are color-coded according to the number of geometric quality criteria for which they contain at least one outlier: green = 0, yellow = 1, orange = 2 and red = 3 or more. A red dot above a residue indicates a poor fit to the electron density ($RSRZ > 2$). Stretches of 2 or more consecutive residues without any outlier are shown as a green connector. Residues present in the sample, but not in the model, are shown in grey.

● Molecule 1: GLUCOSAMINE 6-PHOSPHATE SYNTHASE



4 Data and refinement statistics

Property	Value	Source
Space group	H 3 2	Depositor
Cell constants a, b, c, α , β , γ	143.70Å 143.70Å 173.60Å 90.00° 90.00° 120.00°	Depositor
Resolution (Å)	10.00 – 1.57 28.17 – 1.57	Depositor EDS
% Data completeness (in resolution range)	99.7 (10.00-1.57) 99.5 (28.17-1.57)	Depositor EDS
R_{merge}	0.04	Depositor
R_{sym}	(Not available)	Depositor
$\langle I/\sigma(I) \rangle$ ¹	4.94 (at 1.57Å)	Xtriage
Refinement program	PROLSQ	Depositor
R, R_{free}	0.185 , (Not available) 0.174 , (Not available)	Depositor DCC
R_{free} test set	No test flags present.	DCC
Wilson B-factor (Å ²)	16.4	Xtriage
Anisotropy	0.282	Xtriage
Bulk solvent k_{sol} (e/Å ³), B_{sol} (Å ²)	0.34 , 81.4	EDS
L-test for twinning ²	$\langle L \rangle = 0.51$, $\langle L^2 \rangle = 0.35$	Xtriage
Estimated twinning fraction	0.012 for -2/3*h-1/3*k+2/3*l,-1/3*h-2/3*k-2/3*l,2/3*h-2/3*k+1/3*l 0.003 for -h,1/3*h-1/3*k+2/3*l,2/3*h+4/3*k+1/3*l 0.001 for -1/3*h+1/3*k-2/3*l,-k,-4/3*h-2/3*k+1/3*l	Xtriage
F_o, F_c correlation	0.97	EDS
Total number of atoms	3303	wwPDB-VP
Average B, all atoms (Å ²)	24.0	wwPDB-VP

Xtriage's analysis on translational NCS is as follows: *The largest off-origin peak in the Patterson function is 4.01% of the height of the origin peak. No significant pseudotranslation is detected.*

¹Intensities estimated from amplitudes.

²Theoretical values of $\langle |L| \rangle$, $\langle L^2 \rangle$ for acentric reflections are 0.5, 0.333 respectively for untwinned datasets, and 0.375, 0.2 for perfectly twinned datasets.

5 Model quality

5.1 Standard geometry

Bond lengths and bond angles in the following residue types are not validated in this section: MRD, NA, GLP, SO4, MES

The Z score for a bond length (or angle) is the number of standard deviations the observed value is removed from the expected value. A bond length (or angle) with $|Z| > 5$ is considered an outlier worth inspection. RMSZ is the root-mean-square of all Z scores of the bond lengths (or angles).

Mol	Chain	Bond lengths		Bond angles	
		RMSZ	$\# Z > 5$	RMSZ	$\# Z > 5$
1	A	0.68	0/2881	1.24	17/3899 (0.4%)

There are no bond length outliers.

All (17) bond angle outliers are listed below:

Mol	Chain	Res	Type	Atoms	Z	Observed(°)	Ideal(°)
1	A	311	ARG	NE-CZ-NH2	-11.62	114.49	120.30
1	A	539	ARG	NE-CZ-NH1	9.13	124.86	120.30
1	A	537	ARG	NE-CZ-NH1	8.54	124.57	120.30
1	A	537	ARG	NE-CZ-NH2	-7.38	116.61	120.30
1	A	451	ASP	CA-CB-CG	6.87	128.52	113.40
1	A	331	ARG	NE-CZ-NH1	6.45	123.53	120.30
1	A	544	TYR	CB-CG-CD2	-6.25	117.25	121.00
1	A	443	ARG	NE-CZ-NH2	-6.20	117.20	120.30
1	A	568	GLU	OE1-CD-OE2	-6.19	115.87	123.30
1	A	550	ASP	CB-CG-OD2	-5.86	113.03	118.30
1	A	311	ARG	NH1-CZ-NH2	5.57	125.53	119.40
1	A	333	ARG	NE-CZ-NH2	-5.57	117.52	120.30
1	A	586	HIS	CA-CB-CG	-5.26	104.67	113.60
1	A	339	ARG	NE-CZ-NH1	-5.20	117.70	120.30
1	A	459	GLU	OE1-CD-OE2	5.13	129.45	123.30
1	A	249	ARG	NE-CZ-NH2	5.11	122.86	120.30
1	A	524	GLU	CA-CB-CG	5.05	124.52	113.40

There are no chirality outliers.

There are no planarity outliers.

5.2 Too-close contacts ⓘ

In the following table, the Non-H and H(model) columns list the number of non-hydrogen atoms and hydrogen atoms in the chain respectively. The H(added) column lists the number of hydrogen atoms added and optimized by MolProbity. The Clashes column lists the number of clashes within the asymmetric unit, whereas Symm-Clashes lists symmetry related clashes.

Mol	Chain	Non-H	H(model)	H(added)	Clashes	Symm-Clashes
1	A	2825	0	2853	33	0
2	A	16	0	12	0	0
3	A	25	0	0	0	0
4	A	1	0	0	0	0
5	A	12	0	12	2	0
6	A	8	0	14	1	0
7	A	416	0	0	10	0
All	All	3303	0	2891	34	0

The all-atom clashscore is defined as the number of clashes found per 1000 atoms (including hydrogen atoms). The all-atom clashscore for this structure is 6.

All (34) close contacts within the same asymmetric unit are listed below, sorted by their clash magnitude.

Atom-1	Atom-2	Interatomic distance (Å)	Clash overlap (Å)
1:A:421:ARG:NH2	7:A:767:HOH:O	1.58	1.28
1:A:421:ARG:CZ	7:A:767:HOH:O	2.04	0.85
1:A:421:ARG:HG3	7:A:815:HOH:O	1.77	0.84
1:A:513:ASP:HB3	7:A:745:HOH:O	1.87	0.74
1:A:461:PHE:CE2	1:A:517:ILE:HD11	2.24	0.73
1:A:392:ASN:ND2	7:A:879:HOH:O	2.35	0.59
1:A:520:ALA:HB1	5:A:610:MES:H21	1.85	0.59
1:A:451:ASP:O	1:A:452:LYS:HD3	2.03	0.58
1:A:480:LEU:HD23	1:A:496:ALA:HB3	1.87	0.57
1:A:250:HIS:HD2	1:A:585:TYR:OH	1.88	0.56
6:A:611:MRD:H5C2	6:A:611:MRD:H1C2	1.89	0.54
1:A:461:PHE:HE2	1:A:517:ILE:HD11	1.72	0.50
1:A:443:ARG:HD3	1:A:567:VAL:HG12	1.94	0.49
1:A:447:MET:HE2	1:A:575:PHE:CE1	2.49	0.48
1:A:287:GLU:O	1:A:291:LYS:HG3	2.15	0.47
1:A:399:VAL:HB	1:A:598:PRO:HD2	1.97	0.47
1:A:585:TYR:CE2	1:A:589[A]:LEU:HD11	2.49	0.46
1:A:245:LYS:NZ	7:A:766:HOH:O	2.37	0.45
1:A:435:HIS:HD2	7:A:872:HOH:O	2.00	0.45
1:A:440:LEU:HD13	1:A:571:ILE:HD13	1.99	0.44

Continued on next page...

Continued from previous page...

Atom-1	Atom-2	Interatomic distance (Å)	Clash overlap (Å)
1:A:346:LEU:HD23	1:A:373:ILE:HB	1.99	0.44
1:A:451:ASP:HB3	7:A:956:HOH:O	2.16	0.44
1:A:572:ALA:N	1:A:573:PRO:CD	2.81	0.43
1:A:476:TYR:HB3	1:A:477:PRO:HD3	2.01	0.43
1:A:608:GLU:HG2	1:A:608:GLU:H	1.60	0.42
1:A:326:ILE:HA	1:A:326:ILE:HD13	1.82	0.42
1:A:421:ARG:CG	7:A:815:HOH:O	2.52	0.42
1:A:455:GLU:HG3	1:A:586:HIS:CE1	2.55	0.41
1:A:350:GLY:HA2	1:A:381:LEU:HD12	2.03	0.41
1:A:363:LYS:NZ	1:A:384:GLU:O	2.43	0.41
1:A:423:LYS:HE2	1:A:423:LYS:HB3	1.64	0.41
1:A:569:GLU:OE2	5:A:610:MES:H72	2.21	0.41
1:A:337:VAL:HG21	1:A:365:LEU:HB3	2.03	0.41
1:A:446:GLN:HB3	7:A:742:HOH:O	2.21	0.40

There are no symmetry-related clashes.

5.3 Torsion angles [i](#)

5.3.1 Protein backbone [i](#)

In the following table, the Percentiles column shows the percent Ramachandran outliers of the chain as a percentile score with respect to all X-ray entries followed by that with respect to entries of similar resolution.

The Analysed column shows the number of residues for which the backbone conformation was analysed, and the total number of residues.

Mol	Chain	Analysed	Favoured	Allowed	Outliers	Percentiles	
1	A	366/368 (100%)	360 (98%)	6 (2%)	0	100	100

There are no Ramachandran outliers to report.

5.3.2 Protein sidechains [i](#)

In the following table, the Percentiles column shows the percent sidechain outliers of the chain as a percentile score with respect to all X-ray entries followed by that with respect to entries of similar resolution.

The Analysed column shows the number of residues for which the sidechain conformation was analysed, and the total number of residues.

Mol	Chain	Analysed	Rotameric	Outliers	Percentiles	
1	A	307/306 (100%)	303 (99%)	4 (1%)	73	53

All (4) residues with a non-rotameric sidechain are listed below:

Mol	Chain	Res	Type
1	A	451	ASP
1	A	452	LYS
1	A	453	ARG
1	A	497	TYR

Some sidechains can be flipped to improve hydrogen bonding and reduce clashes. All (3) such sidechains are listed below:

Mol	Chain	Res	Type
1	A	250	HIS
1	A	465	HIS
1	A	549	GLN

5.3.3 RNA [i](#)

There are no RNA molecules in this entry.

5.4 Non-standard residues in protein, DNA, RNA chains [i](#)

There are no non-standard protein/DNA/RNA residues in this entry.

5.5 Carbohydrates [i](#)

There are no carbohydrates in this entry.

5.6 Ligand geometry [i](#)

Of 9 ligands modelled in this entry, 1 is monoatomic - leaving 8 for Mogul analysis.

In the following table, the Counts columns list the number of bonds (or angles) for which Mogul statistics could be retrieved, the number of bonds (or angles) that are observed in the model and the number of bonds (or angles) that are defined in the chemical component dictionary. The Link column lists molecule types, if any, to which the group is linked. The Z score for a bond length (or angle) is the number of standard deviations the observed value is removed from the expected value. A bond length (or angle) with $|Z| > 2$ is considered an outlier worth inspection. RMSZ is the root-mean-square of all Z scores of the bond lengths (or angles).

Mol	Type	Chain	Res	Link	Bond lengths			Bond angles		
					Counts	RMSZ	# Z > 2	Counts	RMSZ	# Z > 2
2	GLP	A	609	-	16,16,16	1.06	1 (6%)	22,24,24	1.26	1 (4%)
5	MES	A	610	4	12,12,12	5.02	6 (50%)	14,16,16	4.03	10 (71%)
6	MRD	A	611	-	7,7,7	0.47	0	9,10,10	0.58	0
3	SO4	A	612	-	4,4,4	0.73	0	6,6,6	0.32	0
3	SO4	A	613	-	4,4,4	0.87	0	6,6,6	0.56	0
3	SO4	A	614	-	4,4,4	0.95	0	6,6,6	0.40	0
3	SO4	A	615	-	4,4,4	0.95	0	6,6,6	1.03	1 (16%)
3	SO4	A	616	-	4,4,4	0.70	0	6,6,6	0.38	0

In the following table, the Chirals column lists the number of chiral outliers, the number of chiral centers analysed, the number of these observed in the model and the number defined in the chemical component dictionary. Similar counts are reported in the Torsion and Rings columns. '-' means no outliers of that kind were identified.

Mol	Type	Chain	Res	Link	Chirals	Torsions	Rings
2	GLP	A	609	-	-	0/6/26/26	0/1/1/1
5	MES	A	610	4	-	0/6/14/14	0/1/1/1
6	MRD	A	611	-	-	0/5/5/5	0/0/0/0
3	SO4	A	612	-	-	0/0/0/0	0/0/0/0
3	SO4	A	613	-	-	0/0/0/0	0/0/0/0
3	SO4	A	614	-	-	0/0/0/0	0/0/0/0
3	SO4	A	615	-	-	0/0/0/0	0/0/0/0
3	SO4	A	616	-	-	0/0/0/0	0/0/0/0

All (7) bond length outliers are listed below:

Mol	Chain	Res	Type	Atoms	Z	Observed(Å)	Ideal(Å)
5	A	610	MES	C8-S	-16.19	1.53	1.77
5	A	610	MES	C3-C2	-3.02	1.38	1.50
5	A	610	MES	C5-C6	-2.87	1.38	1.50
5	A	610	MES	C3-N4	-2.57	1.40	1.47
5	A	610	MES	C5-N4	-2.52	1.40	1.47
2	A	609	GLP	C2-N2	-2.09	1.44	1.47
5	A	610	MES	O2S-S	2.75	1.53	1.45

All (12) bond angle outliers are listed below:

Mol	Chain	Res	Type	Atoms	Z	Observed(°)	Ideal(°)
5	A	610	MES	O3S-S-C8	2.03	108.55	106.06
3	A	615	SO4	O3-S-O2	2.11	120.88	109.26
5	A	610	MES	C6-O1-C2	2.35	117.83	109.89

Continued on next page...

Continued from previous page...

Mol	Chain	Res	Type	Atoms	Z	Observed(°)	Ideal(°)
5	A	610	MES	C7-N4-C3	2.79	118.41	111.26
5	A	610	MES	O1S-S-C8	2.88	109.27	106.79
5	A	610	MES	C5-N4-C3	3.71	117.28	108.87
2	A	609	GLP	C1-O5-C5	3.80	120.24	113.39
5	A	610	MES	O1-C2-C3	3.97	120.71	111.83
5	A	610	MES	O1-C6-C5	4.08	120.95	111.83
5	A	610	MES	C7-N4-C5	4.99	124.06	111.26
5	A	610	MES	C6-C5-N4	7.61	120.76	110.11
5	A	610	MES	C2-C3-N4	8.40	121.88	110.11

There are no chirality outliers.

There are no torsion outliers.

There are no ring outliers.

2 monomers are involved in 3 short contacts:

Mol	Chain	Res	Type	Clashes	Symm-Clashes
5	A	610	MES	2	0
6	A	611	MRD	1	0

5.7 Other polymers [i](#)

There are no such residues in this entry.

5.8 Polymer linkage issues [i](#)

There are no chain breaks in this entry.

6 Fit of model and data [i](#)

6.1 Protein, DNA and RNA chains [i](#)

In the following table, the column labelled ‘#RSRZ > 2’ contains the number (and percentage) of RSRZ outliers, followed by percent RSRZ outliers for the chain as percentile scores relative to all X-ray entries and entries of similar resolution. The OWAB column contains the minimum, median, 95th percentile and maximum values of the occupancy-weighted average B-factor per residue. The column labelled ‘Q < 0.9’ lists the number of (and percentage) of residues with an average occupancy less than 0.9.

Mol	Chain	Analysed	<RSRZ>	#RSRZ>2	OWAB(Å ²)	Q<0.9
1	A	366/368 (99%)	-0.61	2 (0%) 90 91	10, 18, 48, 88	0

All (2) RSRZ outliers are listed below:

Mol	Chain	Res	Type	RSRZ
1	A	421	ARG	2.4
1	A	451	ASP	2.2

6.2 Non-standard residues in protein, DNA, RNA chains [i](#)

There are no non-standard protein/DNA/RNA residues in this entry.

6.3 Carbohydrates [i](#)

There are no carbohydrates in this entry.

6.4 Ligands [i](#)

In the following table, the Atoms column lists the number of modelled atoms in the group and the number defined in the chemical component dictionary. LLDF column lists the quality of electron density of the group with respect to its neighbouring residues in protein, DNA or RNA chains. The B-factors column lists the minimum, median, 95th percentile and maximum values of B factors of atoms in the group. The column labelled ‘Q < 0.9’ lists the number of atoms with occupancy less than 0.9.

Mol	Type	Chain	Res	Atoms	RSCC	RSR	LLDF	B-factors(Å ²)	Q<0.9
3	SO4	A	612	5/5	0.91	0.14	17.66	28,29,31,43	5
3	SO4	A	613	5/5	0.67	0.14	14.16	25,33,39,52	5
6	MRD	A	611	8/8	0.89	0.12	6.72	29,57,66,68	0

Continued on next page...

Continued from previous page...

Mol	Type	Chain	Res	Atoms	RSCC	RSR	LLDF	B-factors(\AA^2)	Q<0.9
5	MES	A	610	12/12	0.97	0.06	1.68	19,23,29,36	0
3	SO4	A	616	5/5	0.91	0.09	0.86	30,37,46,47	5
2	GLP	A	609	16/16	0.99	0.06	0.03	12,13,15,17	0
4	NA	A	617	1/1	0.84	0.12	-	46,46,46,46	0
3	SO4	A	615	5/5	0.96	0.13	-	16,18,48,48	5
3	SO4	A	614	5/5	0.92	0.13	-	31,39,60,60	5

6.5 Other polymers [i](#)

There are no such residues in this entry.