



Full wwPDB X-ray Structure Validation Report ⓘ

Apr 3, 2017 – 10:26 AM EDT

PDB ID : 5MO4
Title : ABL1 kinase (T334I_D382N) in complex with asciminib and nilotinib
Authors : Cowan-Jacob, S.W.
Deposited on : 2016-12-13
Resolution : 2.17 Å(reported)

This is a Full wwPDB X-ray Structure Validation Report for a publicly released PDB entry.

We welcome your comments at validation@mail.wwpdb.org

A user guide is available at

<http://wwpdb.org/validation/2016/XrayValidationReportHelp>

with specific help available everywhere you see the ⓘ symbol.

The following versions of software and data (see [references ⓘ](#)) were used in the production of this report:

MolProbity : 4.02b-467
Mogul : 1.7.2 (RC1), CSD as538be (2017)
Xtriage (Phenix) : 1.9-1692
EDS : rb-20029077
Percentile statistics : 20161228.v01 (using entries in the PDB archive December 28th 2016)
Refmac : 5.8.0135
CCP4 : 6.5.0
Ideal geometry (proteins) : Engh & Huber (2001)
Ideal geometry (DNA, RNA) : Parkinson et al. (1996)
Validation Pipeline (wwPDB-VP) : rb-20029077

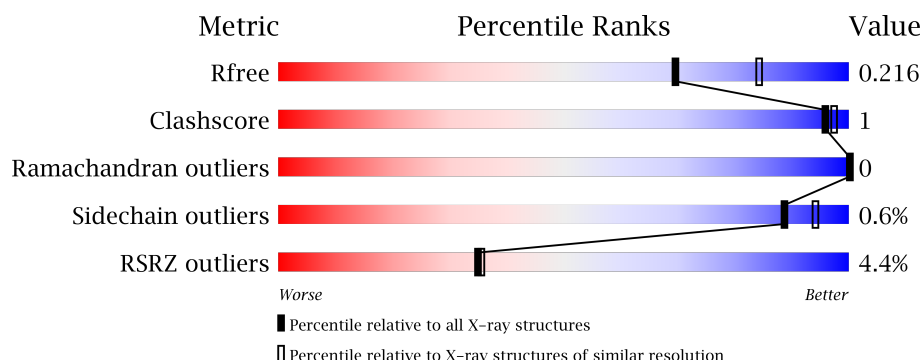
1 Overall quality at a glance

The following experimental techniques were used to determine the structure:

X-RAY DIFFRACTION

The reported resolution of this entry is 2.17 Å.

Percentile scores (ranging between 0-100) for global validation metrics of the entry are shown in the following graphic. The table shows the number of entries on which the scores are based.



Metric	Whole archive (#Entries)	Similar resolution (#Entries, resolution range(Å))
R_{free}	100719	5526 (2.20-2.16)
Clashscore	112137	6386 (2.20-2.16)
Ramachandran outliers	110173	6282 (2.20-2.16)
Sidechain outliers	110143	6282 (2.20-2.16)
RSRZ outliers	101464	5562 (2.20-2.16)

The table below summarises the geometric issues observed across the polymeric chains and their fit to the electron density. The red, orange, yellow and green segments on the lower bar indicate the fraction of residues that contain outliers for ≥ 3 , 2, 1 and 0 types of geometric quality criteria. A grey segment represents the fraction of residues that are not modelled. The numeric value for each fraction is indicated below the corresponding segment, with a dot representing fractions $\leq 5\%$. The upper red bar (where present) indicates the fraction of residues that have poor fit to the electron density. The numeric value is given above the bar.

Mol	Chain	Length	Quality of chain
1	A	495	<div> <div>4%</div> <div>83%</div> <div>13%</div> </div>

2 Entry composition [i](#)

There are 4 unique types of molecules in this entry. The entry contains 3770 atoms, of which 0 are hydrogens and 0 are deuteriums.

In the tables below, the ZeroOcc column contains the number of atoms modelled with zero occupancy, the AltConf column contains the number of residues with at least one atom in alternate conformation and the Trace column contains the number of residues modelled with at most 2 atoms.

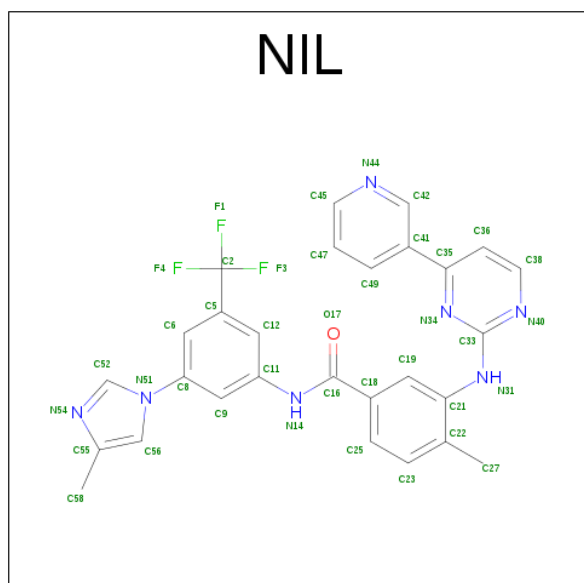
- Molecule 1 is a protein called Tyrosine-protein kinase ABL1.

Mol	Chain	Residues	Atoms					ZeroOcc	AltConf	Trace
1	A	429	Total	C	N	O	S	0	1	0
			3393	2174	570	632	17			

There are 8 discrepancies between the modelled and reference sequences:

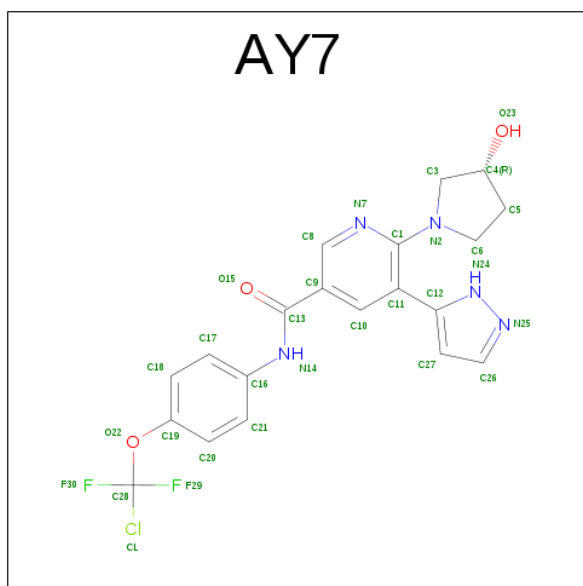
Chain	Residue	Modelled	Actual	Comment	Reference
A	40	GLY	-	expression tag	UNP P00519
A	41	ALA	-	expression tag	UNP P00519
A	42	MET	-	expression tag	UNP P00519
A	43	ASP	-	expression tag	UNP P00519
A	44	PRO	-	expression tag	UNP P00519
A	45	SER	-	expression tag	UNP P00519
A	334	ILE	THR	conflict	UNP P00519
A	382	ASN	ASP	conflict	UNP P00519

- Molecule 2 is Nilotinib (three-letter code: NIL) (formula: C₂₈H₂₂F₃N₇O).



Mol	Chain	Residues	Atoms					ZeroOcc	AltConf
2	A	1	Total	C	F	N	O	0	0
			39	28	3	7	1		

- Molecule 3 is asciminib (three-letter code: AY7) (formula: $C_{20}H_{18}ClF_2N_5O_3$).



Mol	Chain	Residues	Atoms					ZeroOcc	AltConf
3	A	1	Total	C	Cl	F	N	O	
			31	20	1	2	5	3	

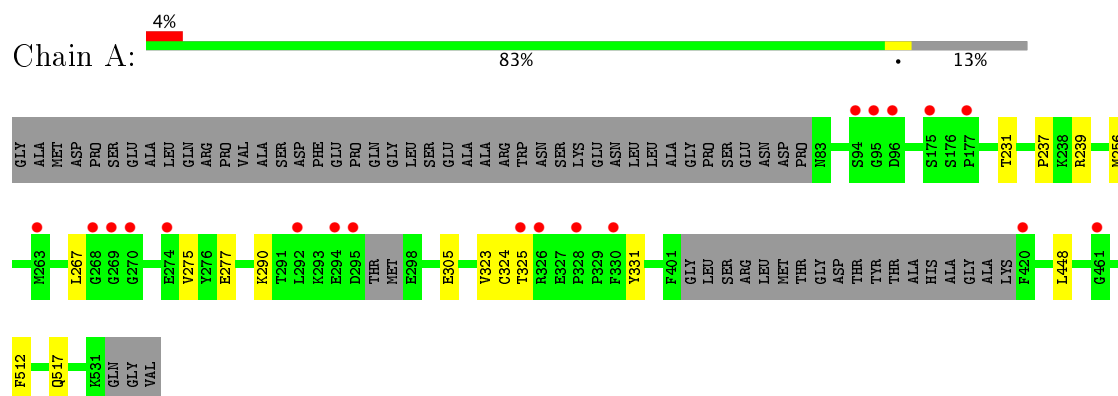
- Molecule 4 is water.

Mol	Chain	Residues	Atoms		ZeroOcc	AltConf
4	A	307	Total	O	0	0
			307	307		

3 Residue-property plots [i](#)

These plots are drawn for all protein, RNA and DNA chains in the entry. The first graphic for a chain summarises the proportions of the various outlier classes displayed in the second graphic. The second graphic shows the sequence view annotated by issues in geometry and electron density. Residues are color-coded according to the number of geometric quality criteria for which they contain at least one outlier: green = 0, yellow = 1, orange = 2 and red = 3 or more. A red dot above a residue indicates a poor fit to the electron density ($RSRZ > 2$). Stretches of 2 or more consecutive residues without any outlier are shown as a green connector. Residues present in the sample, but not in the model, are shown in grey.

- Molecule 1: Tyrosine-protein kinase ABL1



4 Data and refinement statistics

Property	Value	Source
Space group	C 2 2 21	Depositor
Cell constants a, b, c, α , β , γ	118.28Å 124.13Å 74.66Å 90.00° 90.00° 90.00°	Depositor
Resolution (Å)	59.14 – 2.17 56.27 – 2.17	Depositor EDS
% Data completeness (in resolution range)	98.5 (59.14-2.17) 98.5 (56.27-2.17)	Depositor EDS
R_{merge}	0.09	Depositor
R_{sym}	(Not available)	Depositor
$\langle I/\sigma(I) \rangle$ ¹	3.34 (at 2.16Å)	Xtriage
Refinement program	BUSTER 2.11.4	Depositor
R, R_{free}	0.182 , 0.217 0.183 , 0.216	Depositor DCC
R_{free} test set	1439 reflections (5.22%)	DCC
Wilson B-factor (Å ²)	31.5	Xtriage
Anisotropy	0.371	Xtriage
Bulk solvent k_{sol} (e/Å ³), B_{sol} (Å ²)	0.35 , 55.3	EDS
L-test for twinning ²	$\langle L \rangle = 0.48$, $\langle L^2 \rangle = 0.31$	Xtriage
Estimated twinning fraction	0.026 for -k,-h,-l	Xtriage
F_o, F_c correlation	0.95	EDS
Total number of atoms	3770	wwPDB-VP
Average B, all atoms (Å ²)	36.0	wwPDB-VP

Xtriage's analysis on translational NCS is as follows: *The largest off-origin peak in the Patterson function is 4.28% of the height of the origin peak. No significant pseudotranslation is detected.*

¹Intensities estimated from amplitudes.

²Theoretical values of $\langle |L| \rangle$, $\langle L^2 \rangle$ for acentric reflections are 0.5, 0.333 respectively for untwinned datasets, and 0.375, 0.2 for perfectly twinned datasets.

5 Model quality

5.1 Standard geometry

Bond lengths and bond angles in the following residue types are not validated in this section: AY7, NIL

The Z score for a bond length (or angle) is the number of standard deviations the observed value is removed from the expected value. A bond length (or angle) with $|Z| > 5$ is considered an outlier worth inspection. RMSZ is the root-mean-square of all Z scores of the bond lengths (or angles).

Mol	Chain	Bond lengths		Bond angles	
		RMSZ	$\# Z > 5$	RMSZ	$\# Z > 5$
1	A	0.51	0/3482	0.65	0/4734

There are no bond length outliers.

There are no bond angle outliers.

There are no chirality outliers.

There are no planarity outliers.

5.2 Too-close contacts

In the following table, the Non-H and H(model) columns list the number of non-hydrogen atoms and hydrogen atoms in the chain respectively. The H(added) column lists the number of hydrogen atoms added and optimized by MolProbity. The Clashes column lists the number of clashes within the asymmetric unit, whereas Symm-Clashes lists symmetry related clashes.

Mol	Chain	Non-H	H(model)	H(added)	Clashes	Symm-Clashes
1	A	3393	0	3233	9	0
2	A	39	0	22	2	0
3	A	31	0	0	0	0
4	A	307	0	0	0	0
All	All	3770	0	3255	9	0

The all-atom clashscore is defined as the number of clashes found per 1000 atoms (including hydrogen atoms). The all-atom clashscore for this structure is 1.

All (9) close contacts within the same asymmetric unit are listed below, sorted by their clash magnitude.

Atom-1	Atom-2	Interatomic distance (Å)	Clash overlap (Å)
1:A:324:CYS:HB2	1:A:331:TYR:HB2	1.84	0.60
1:A:290:LYS:HB2	2:A:601:NIL:H27B	1.85	0.58
1:A:448:LEU:HD11	1:A:512:PHE:HZ	1.80	0.47
1:A:256[A]:MET:SD	1:A:324:CYS:SG	3.14	0.45
1:A:305:GLU:HG3	2:A:601:NIL:H56	2.00	0.44
1:A:267:LEU:HD12	1:A:275:VAL:HG12	1.99	0.44
1:A:237:PRO:HB2	1:A:239:ARG:HG2	1.99	0.44
1:A:267:LEU:HD21	1:A:277:GLU:HB2	2.00	0.43
1:A:323:VAL:HB	1:A:325:THR:HG23	2.02	0.41

There are no symmetry-related clashes.

5.3 Torsion angles [i](#)

5.3.1 Protein backbone [i](#)

In the following table, the Percentiles column shows the percent Ramachandran outliers of the chain as a percentile score with respect to all X-ray entries followed by that with respect to entries of similar resolution.

The Analysed column shows the number of residues for which the backbone conformation was analysed, and the total number of residues.

Mol	Chain	Analysed	Favoured	Allowed	Outliers	Percentiles	
1	A	424/495 (86%)	406 (96%)	18 (4%)	0	100	100

There are no Ramachandran outliers to report.

5.3.2 Protein sidechains [i](#)

In the following table, the Percentiles column shows the percent sidechain outliers of the chain as a percentile score with respect to all X-ray entries followed by that with respect to entries of similar resolution.

The Analysed column shows the number of residues for which the sidechain conformation was analysed, and the total number of residues.

Mol	Chain	Analysed	Rotameric	Outliers	Percentiles	
1	A	356/427 (83%)	354 (99%)	2 (1%)	89	94

All (2) residues with a non-rotameric sidechain are listed below:

Mol	Chain	Res	Type
1	A	231	THR
1	A	517	GLN

Some sidechains can be flipped to improve hydrogen bonding and reduce clashes. All (1) such sidechains are listed below:

Mol	Chain	Res	Type
1	A	212	ASN

5.3.3 RNA [i](#)

There are no RNA molecules in this entry.

5.4 Non-standard residues in protein, DNA, RNA chains [i](#)

There are no non-standard protein/DNA/RNA residues in this entry.

5.5 Carbohydrates [i](#)

There are no carbohydrates in this entry.

5.6 Ligand geometry [i](#)

2 ligands are modelled in this entry.

In the following table, the Counts columns list the number of bonds (or angles) for which Mogul statistics could be retrieved, the number of bonds (or angles) that are observed in the model and the number of bonds (or angles) that are defined in the chemical component dictionary. The Link column lists molecule types, if any, to which the group is linked. The Z score for a bond length (or angle) is the number of standard deviations the observed value is removed from the expected value. A bond length (or angle) with $|Z| > 2$ is considered an outlier worth inspection. RMSZ is the root-mean-square of all Z scores of the bond lengths (or angles).

Mol	Type	Chain	Res	Link	Bond lengths			Bond angles		
					Counts	RMSZ	# Z > 2	Counts	RMSZ	# Z > 2
2	NIL	A	601	-	41,43,43	1.76	6 (14%)	57,62,62	1.90	11 (19%)
3	AY7	A	602	-	32,34,34	1.85	3 (9%)	40,49,49	1.58	7 (17%)

In the following table, the Chirals column lists the number of chiral outliers, the number of chiral centers analysed, the number of these observed in the model and the number defined in the chemical component dictionary. Similar counts are reported in the Torsion and Rings columns. '-' means

no outliers of that kind were identified.

Mol	Type	Chain	Res	Link	Chirals	Torsions	Rings
2	NIL	A	601	-	-	0/26/26/26	0/5/5/5
3	AY7	A	602	-	-	1/19/30/30	0/4/4/4

All (9) bond length outliers are listed below:

Mol	Chain	Res	Type	Atoms	Z	Observed(Å)	Ideal(Å)
2	A	601	NIL	C56-N51	-5.74	1.32	1.39
2	A	601	NIL	C52-N54	-5.28	1.25	1.35
3	A	602	AY7	C27-C12	-4.39	1.34	1.40
2	A	601	NIL	C8-N51	-4.23	1.37	1.45
3	A	602	AY7	C26-N25	-2.82	1.28	1.33
2	A	601	NIL	C2-C5	2.09	1.54	1.49
2	A	601	NIL	C9-C8	2.55	1.41	1.38
2	A	601	NIL	C6-C8	2.98	1.42	1.38
3	A	602	AY7	C27-C26	7.07	1.47	1.38

All (18) bond angle outliers are listed below:

Mol	Chain	Res	Type	Atoms	Z	Observed(°)	Ideal(°)
2	A	601	NIL	N40-C33-N34	-6.17	120.75	126.68
3	A	602	AY7	C27-C12-C11	-5.09	124.11	128.78
3	A	602	AY7	C4-C3-N2	-4.25	98.28	103.08
2	A	601	NIL	C36-C38-N40	-3.05	120.40	123.92
3	A	602	AY7	C9-C8-N7	-2.69	119.73	123.64
3	A	602	AY7	O15-C13-C9	-2.46	116.58	120.94
2	A	601	NIL	C6-C8-C9	-2.37	118.92	121.68
3	A	602	AY7	C27-C26-N25	-2.04	106.27	111.35
2	A	601	NIL	C36-C35-N34	-2.00	119.26	121.97
2	A	601	NIL	C23-C22-C21	2.17	119.18	117.42
3	A	602	AY7	C8-N7-C1	2.31	122.57	114.90
2	A	601	NIL	N31-C33-N40	2.32	124.12	116.53
2	A	601	NIL	C6-C8-N51	2.56	121.64	118.85
2	A	601	NIL	C45-N44-C42	2.72	121.60	116.83
2	A	601	NIL	C58-C55-N54	3.09	127.07	119.97
3	A	602	AY7	C11-C12-N24	3.15	125.84	120.96
2	A	601	NIL	C38-N40-C33	5.44	119.97	115.43
2	A	601	NIL	C35-N34-C33	7.52	121.91	116.55

There are no chirality outliers.

All (1) torsion outliers are listed below:

Mol	Chain	Res	Type	Atoms
3	A	602	AY7	N7-C1-N2-C3

There are no ring outliers.

1 monomer is involved in 2 short contacts:

Mol	Chain	Res	Type	Clashes	Symm-Clashes
2	A	601	NIL	2	0

5.7 Other polymers [i](#)

There are no such residues in this entry.

5.8 Polymer linkage issues [i](#)

There are no chain breaks in this entry.

6 Fit of model and data ⓘ

6.1 Protein, DNA and RNA chains ⓘ

In the following table, the column labelled ‘#RSRZ> 2’ contains the number (and percentage) of RSRZ outliers, followed by percent RSRZ outliers for the chain as percentile scores relative to all X-ray entries and entries of similar resolution. The OWAB column contains the minimum, median, 95th percentile and maximum values of the occupancy-weighted average B-factor per residue. The column labelled ‘Q< 0.9’ lists the number of (and percentage) of residues with an average occupancy less than 0.9.

Mol	Chain	Analysed	<RSRZ>	#RSRZ>2	OWAB(Å ²)	Q<0.9
1	A	429/495 (86%)	0.12	19 (4%) 35 35	18, 32, 60, 93	0

All (19) RSRZ outliers are listed below:

Mol	Chain	Res	Type	RSRZ
1	A	461	GLY	7.2
1	A	328	PRO	4.6
1	A	420	PHE	4.3
1	A	95	GLY	3.9
1	A	325	THR	3.9
1	A	269	GLY	3.7
1	A	175	SER	3.7
1	A	326	ARG	3.1
1	A	294	GLU	3.1
1	A	177	PRO	2.8
1	A	96	ASP	2.5
1	A	292	LEU	2.3
1	A	330	PHE	2.3
1	A	94	SER	2.3
1	A	263	MET	2.2
1	A	295	ASP	2.2
1	A	268	GLY	2.1
1	A	274	GLU	2.1
1	A	270	GLY	2.1

6.2 Non-standard residues in protein, DNA, RNA chains ⓘ

There are no non-standard protein/DNA/RNA residues in this entry.

6.3 Carbohydrates [i](#)

There are no carbohydrates in this entry.

6.4 Ligands [i](#)

In the following table, the Atoms column lists the number of modelled atoms in the group and the number defined in the chemical component dictionary. LLDF column lists the quality of electron density of the group with respect to its neighbouring residues in protein, DNA or RNA chains. The B-factors column lists the minimum, median, 95th percentile and maximum values of B factors of atoms in the group. The column labelled 'Q< 0.9' lists the number of atoms with occupancy less than 0.9.

Mol	Type	Chain	Res	Atoms	RSCC	RSR	LLDF	B-factors(\AA^2)	Q<0.9
2	NIL	A	601	39/39	0.96	0.11	-0.28	26,30,44,46	0
3	AY7	A	602	31/31	0.94	0.11	-0.69	25,29,58,63	0

6.5 Other polymers [i](#)

There are no such residues in this entry.