



# Full wwPDB X-ray Structure Validation Report ⓘ

Feb 14, 2017 – 08:46 am GMT

PDB ID : 4MQQ  
Title : Mycobacterium tuberculosis transaminase BioA complexed with benzo[d]thiazole-2-carbohydrazide  
Authors : Finzel, B.C.; Dai, R.  
Deposited on : 2013-09-16  
Resolution : 1.70 Å(reported)

This is a Full wwPDB X-ray Structure Validation Report for a publicly released PDB entry.

We welcome your comments at [validation@mail.wwpdb.org](mailto:validation@mail.wwpdb.org)

A user guide is available at

<http://wwpdb.org/validation/2016/XrayValidationReportHelp>

with specific help available everywhere you see the ⓘ symbol.

---

The following versions of software and data (see [references ⓘ](#)) were used in the production of this report:

MolProbity	:	4.02b-467
Mogul	:	1.7.2 (RC1), CSD as538be (2017)
Xtriage (Phenix)	:	1.9-1692
EDS	:	trunk28620
Percentile statistics	:	20161228.v01 (using entries in the PDB archive December 28th 2016)
Refmac	:	5.8.0135
CCP4	:	6.5.0
Ideal geometry (proteins)	:	Engh & Huber (2001)
Ideal geometry (DNA, RNA)	:	Parkinson et al. (1996)
Validation Pipeline (wwPDB-VP)	:	recalc28949

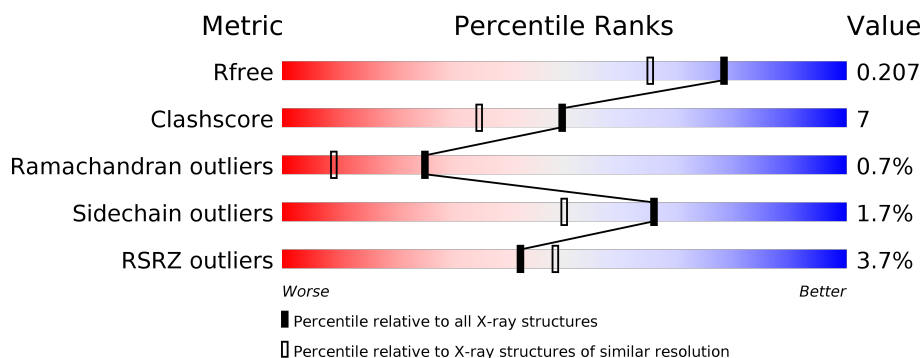
# 1 Overall quality at a glance

The following experimental techniques were used to determine the structure:

## *X-RAY DIFFRACTION*

The reported resolution of this entry is 1.70 Å.

Percentile scores (ranging between 0-100) for global validation metrics of the entry are shown in the following graphic. The table shows the number of entries on which the scores are based.



Metric	Whole archive (#Entries)	Similar resolution (#Entries, resolution range(Å))
$R_{free}$	100719	3453 (1.70-1.70)
Clashscore	112137	3876 (1.70-1.70)
Ramachandran outliers	110173	3815 (1.70-1.70)
Sidechain outliers	110143	3815 (1.70-1.70)
RSRZ outliers	101464	3491 (1.70-1.70)

The table below summarises the geometric issues observed across the polymeric chains and their fit to the electron density. The red, orange, yellow and green segments on the lower bar indicate the fraction of residues that contain outliers for  $\geq 3$ , 2, 1 and 0 types of geometric quality criteria. A grey segment represents the fraction of residues that are not modelled. The numeric value for each fraction is indicated below the corresponding segment, with a dot representing fractions  $\leq 5\%$ . The upper red bar (where present) indicates the fraction of residues that have poor fit to the electron density. The numeric value is given above the bar.

Mol	Chain	Length	Quality of chain
1	A	457	<div> <div>4%</div> <div> <div></div> <div>85%</div> <div>7% • 6%</div> </div> </div>
1	B	457	<div> <div>3%</div> <div> <div></div> <div>85%</div> <div>8% • 6%</div> </div> </div>

The following table lists non-polymeric compounds, carbohydrate monomers and non-standard residues in protein, DNA, RNA chains that are outliers for geometric or electron-density-fit criteria:

Mol	Type	Chain	Res	Chirality	Geometry	Clashes	Electron density
2	EDO	A	504	-	-	-	X
4	2B6	A	505	-	-	-	X
5	IMD	A	506	-	-	X	-

## 2 Entry composition

There are 6 unique types of molecules in this entry. The entry contains 7587 atoms, of which 0 are hydrogens and 0 are deuteriums.

In the tables below, the ZeroOcc column contains the number of atoms modelled with zero occupancy, the AltConf column contains the number of residues with at least one atom in alternate conformation and the Trace column contains the number of residues modelled with at most 2 atoms.

- Molecule 1 is a protein called Adenosylmethionine-8-amino-7-oxononanoate aminotransferase.

Mol	Chain	Residues	Atoms					ZeroOcc	AltConf	Trace
1	A	428	Total	C	N	O	S	0	26	0
			3413	2172	605	614	22			
1	B	428	Total	C	N	O	S	0	21	0
			3353	2127	597	606	23			

There are 40 discrepancies between the modelled and reference sequences:

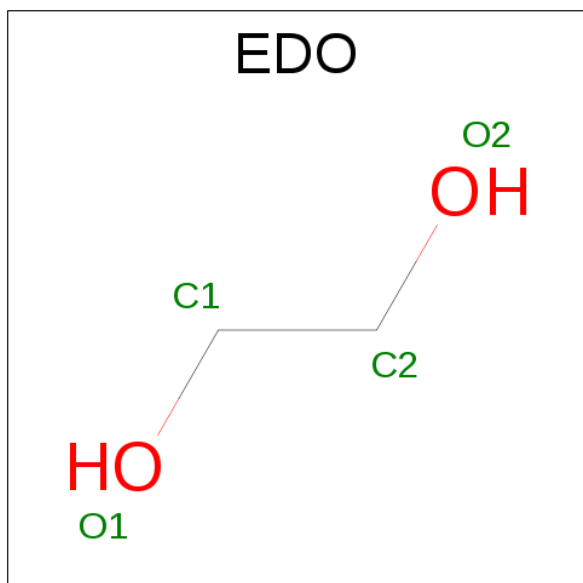
Chain	Residue	Modelled	Actual	Comment	Reference
A	-19	MET	-	INITIATING METHIONINE	UNP P0A4X6
A	-18	GLY	-	EXPRESSION TAG	UNP P0A4X6
A	-17	SER	-	EXPRESSION TAG	UNP P0A4X6
A	-16	SER	-	EXPRESSION TAG	UNP P0A4X6
A	-15	HIS	-	EXPRESSION TAG	UNP P0A4X6
A	-14	HIS	-	EXPRESSION TAG	UNP P0A4X6
A	-13	HIS	-	EXPRESSION TAG	UNP P0A4X6
A	-12	HIS	-	EXPRESSION TAG	UNP P0A4X6
A	-11	HIS	-	EXPRESSION TAG	UNP P0A4X6
A	-10	HIS	-	EXPRESSION TAG	UNP P0A4X6
A	-9	SER	-	EXPRESSION TAG	UNP P0A4X6
A	-8	SER	-	EXPRESSION TAG	UNP P0A4X6
A	-7	GLY	-	EXPRESSION TAG	UNP P0A4X6
A	-6	LEU	-	EXPRESSION TAG	UNP P0A4X6
A	-5	VAL	-	EXPRESSION TAG	UNP P0A4X6
A	-4	PRO	-	EXPRESSION TAG	UNP P0A4X6
A	-3	ARG	-	EXPRESSION TAG	UNP P0A4X6
A	-2	GLY	-	EXPRESSION TAG	UNP P0A4X6
A	-1	SER	-	EXPRESSION TAG	UNP P0A4X6
A	0	HIS	-	EXPRESSION TAG	UNP P0A4X6
B	-19	MET	-	INITIATING METHIONINE	UNP P0A4X6
B	-18	GLY	-	EXPRESSION TAG	UNP P0A4X6
B	-17	SER	-	EXPRESSION TAG	UNP P0A4X6
B	-16	SER	-	EXPRESSION TAG	UNP P0A4X6

*Continued on next page...*

Continued from previous page...

Chain	Residue	Modelled	Actual	Comment	Reference
B	-15	HIS	-	EXPRESSION TAG	UNP P0A4X6
B	-14	HIS	-	EXPRESSION TAG	UNP P0A4X6
B	-13	HIS	-	EXPRESSION TAG	UNP P0A4X6
B	-12	HIS	-	EXPRESSION TAG	UNP P0A4X6
B	-11	HIS	-	EXPRESSION TAG	UNP P0A4X6
B	-10	HIS	-	EXPRESSION TAG	UNP P0A4X6
B	-9	SER	-	EXPRESSION TAG	UNP P0A4X6
B	-8	SER	-	EXPRESSION TAG	UNP P0A4X6
B	-7	GLY	-	EXPRESSION TAG	UNP P0A4X6
B	-6	LEU	-	EXPRESSION TAG	UNP P0A4X6
B	-5	VAL	-	EXPRESSION TAG	UNP P0A4X6
B	-4	PRO	-	EXPRESSION TAG	UNP P0A4X6
B	-3	ARG	-	EXPRESSION TAG	UNP P0A4X6
B	-2	GLY	-	EXPRESSION TAG	UNP P0A4X6
B	-1	SER	-	EXPRESSION TAG	UNP P0A4X6
B	0	HIS	-	EXPRESSION TAG	UNP P0A4X6

- Molecule 2 is 1,2-ETHANEDIOL (three-letter code: EDO) (formula:  $C_2H_6O_2$ ).



Mol	Chain	Residues	Atoms	ZeroOcc	AltConf
2	A	1	Total C O 4 2 2	0	0
2	A	1	Total C O 4 2 2	0	0
2	A	1	Total C O 4 2 2	0	0

Continued on next page...

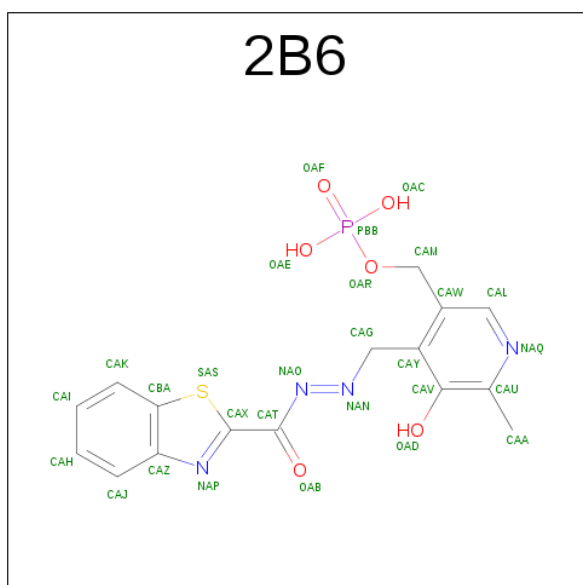
Continued from previous page...

Mol	Chain	Residues	Atoms			ZeroOcc	AltConf
2	B	1	Total	C	O	0	0
			4	2	2		

- Molecule 3 is CHLORIDE ION (three-letter code: CL) (formula: Cl).

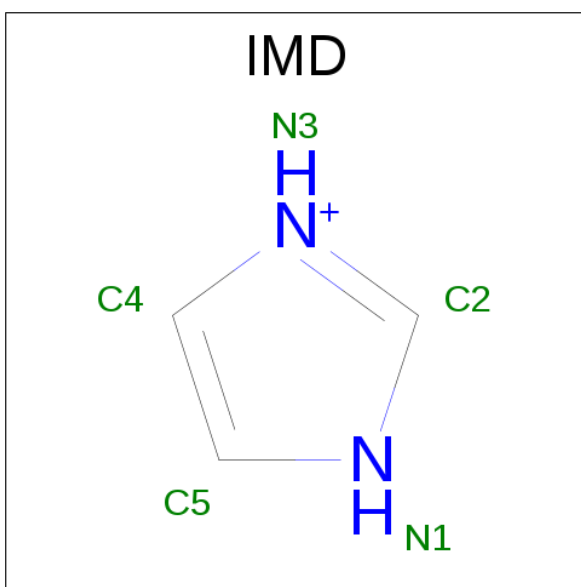
Mol	Chain	Residues	Atoms		ZeroOcc	AltConf
3	A	1	Total	Cl	0	0
			1	1		

- Molecule 4 is (4-{[(E)-(1,3-BENZOTHAZOL-2-YLCARBONYL)DIAZENYL]METHYL}-5-HYDROXY-6-METHYLPYRIDIN-3-YL)METHYL DIHYDROGEN PHOSPHATE (three-letter code: 2B6) (formula: C<sub>16</sub>H<sub>15</sub>N<sub>4</sub>O<sub>6</sub>PS).



Mol	Chain	Residues	Atoms						ZeroOcc	AltConf
4	A	1	Total	C	N	O	P	S	0	0
			28	16	4	6	1	1		
4	B	1	Total	C	N	O	P	S	0	0
			28	16	4	6	1	1		

- Molecule 5 is IMIDAZOLE (three-letter code: IMD) (formula: C<sub>3</sub>H<sub>5</sub>N<sub>2</sub>).



Mol	Chain	Residues	Atoms			ZeroOcc	AltConf
5	A	1	Total	C	N	0	0
			5	3	2		

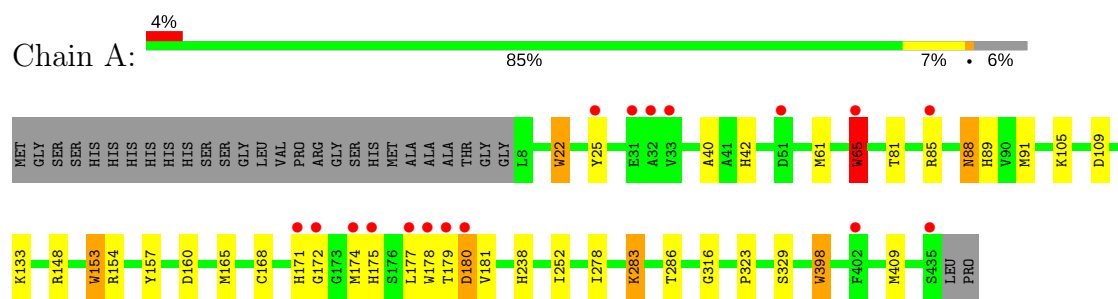
- Molecule 6 is water.

Mol	Chain	Residues	Atoms		ZeroOcc	AltConf
6	A	385	Total	O	0	0
			385	385		
6	B	358	Total	O	0	0
			358	358		

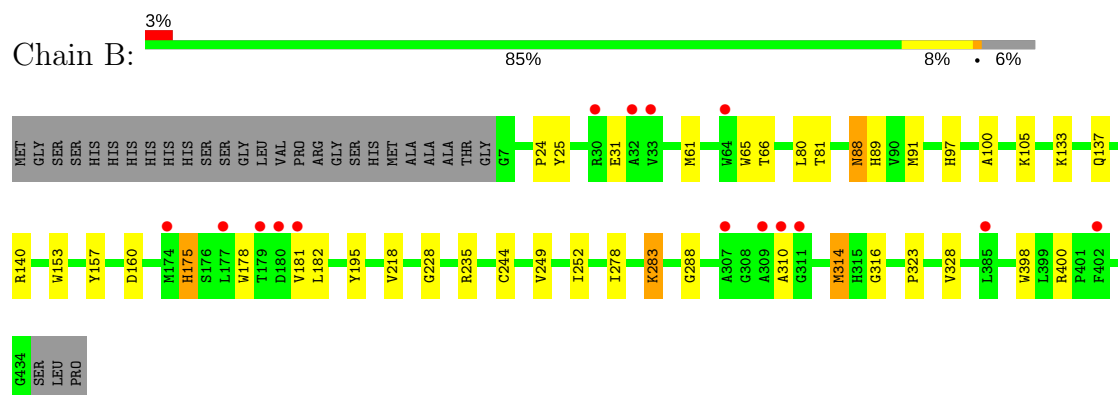
### 3 Residue-property plots [i](#)

These plots are drawn for all protein, RNA and DNA chains in the entry. The first graphic for a chain summarises the proportions of the various outlier classes displayed in the second graphic. The second graphic shows the sequence view annotated by issues in geometry and electron density. Residues are color-coded according to the number of geometric quality criteria for which they contain at least one outlier: green = 0, yellow = 1, orange = 2 and red = 3 or more. A red dot above a residue indicates a poor fit to the electron density ( $RSRZ > 2$ ). Stretches of 2 or more consecutive residues without any outlier are shown as a green connector. Residues present in the sample, but not in the model, are shown in grey.

- Molecule 1: Adenosylmethionine-8-amino-7-oxononanoate aminotransferase



- Molecule 1: Adenosylmethionine-8-amino-7-oxononanoate aminotransferase





## 4 Data and refinement statistics

Property	Value	Source
Space group	P 21 21 21	Depositor
Cell constants a, b, c, $\alpha$ , $\beta$ , $\gamma$	62.95Å 66.35Å 203.97Å 90.00° 90.00° 90.00°	Depositor
Resolution (Å)	101.99 – 1.70 101.99 – 1.70	Depositor EDS
% Data completeness (in resolution range)	98.9 (101.99-1.70) 98.9 (101.99-1.70)	Depositor EDS
$R_{merge}$	(Not available)	Depositor
$R_{sym}$	0.09	Depositor
$\langle I/\sigma(I) \rangle$ <sup>1</sup>	4.48 (at 1.70Å)	Xtriage
Refinement program	REFMAC 5.6.0117	Depositor
R, $R_{free}$	0.182 , 0.209 0.181 , 0.207	Depositor DCC
$R_{free}$ test set	4694 reflections (5.27%)	DCC
Wilson B-factor (Å <sup>2</sup> )	16.2	Xtriage
Anisotropy	0.073	Xtriage
Bulk solvent $k_{sol}$ (e/Å <sup>3</sup> ), $B_{sol}$ (Å <sup>2</sup> )	0.36 , 43.7	EDS
L-test for twinning <sup>2</sup>	$\langle  L  \rangle = 0.47$ , $\langle L^2 \rangle = 0.30$	Xtriage
Estimated twinning fraction	No twinning to report.	Xtriage
$F_o, F_c$ correlation	0.96	EDS
Total number of atoms	7587	wwPDB-VP
Average B, all atoms (Å <sup>2</sup> )	17.0	wwPDB-VP

Xtriage's analysis on translational NCS is as follows: *The largest off-origin peak in the Patterson function is 4.13% of the height of the origin peak. No significant pseudotranslation is detected.*

<sup>1</sup>Intensities estimated from amplitudes.

<sup>2</sup>Theoretical values of  $\langle |L| \rangle$ ,  $\langle L^2 \rangle$  for acentric reflections are 0.5, 0.333 respectively for untwinned datasets, and 0.375, 0.2 for perfectly twinned datasets.

## 5 Model quality [i](#)

### 5.1 Standard geometry [i](#)

Bond lengths and bond angles in the following residue types are not validated in this section: 2B6, CL, EDO, IMD

The Z score for a bond length (or angle) is the number of standard deviations the observed value is removed from the expected value. A bond length (or angle) with  $|Z| > 5$  is considered an outlier worth inspection. RMSZ is the root-mean-square of all Z scores of the bond lengths (or angles).

Mol	Chain	Bond lengths		Bond angles	
		RMSZ	$\# Z  > 5$	RMSZ	$\# Z  > 5$
1	A	0.54	6/3520 (0.2%)	0.55	0/4812
1	B	0.51	1/3446 (0.0%)	0.55	0/4708
All	All	0.52	7/6966 (0.1%)	0.55	0/9520

All (7) bond length outliers are listed below:

Mol	Chain	Res	Type	Atoms	Z	Observed(Å)	Ideal(Å)
1	A	398	TRP	CD2-CE2	5.20	1.47	1.41
1	A	153	TRP	CD2-CE2	5.06	1.47	1.41
1	B	398	TRP	CD2-CE2	5.05	1.47	1.41
1	A	65[A]	TRP	CD2-CE2	5.02	1.47	1.41
1	A	65[B]	TRP	CD2-CE2	5.02	1.47	1.41
1	A	22[A]	TRP	CD2-CE2	5.01	1.47	1.41
1	A	22[B]	TRP	CD2-CE2	5.01	1.47	1.41

There are no bond angle outliers.

There are no chirality outliers.

There are no planarity outliers.

### 5.2 Too-close contacts [i](#)

In the following table, the Non-H and H(model) columns list the number of non-hydrogen atoms and hydrogen atoms in the chain respectively. The H(added) column lists the number of hydrogen atoms added and optimized by MolProbity. The Clashes column lists the number of clashes within the asymmetric unit, whereas Symm-Clashes lists symmetry related clashes.

Mol	Chain	Non-H	H(model)	H(added)	Clashes	Symm-Clashes
1	A	3413	0	3368	47	0
1	B	3353	0	3327	57	0

*Continued on next page...*

*Continued from previous page...*

Mol	Chain	Non-H	H(model)	H(added)	Clashes	Symm-Clashes
2	A	12	0	18	0	0
2	B	4	0	6	0	0
3	A	1	0	0	0	0
4	A	28	0	15	5	0
4	B	28	0	15	2	0
5	A	5	0	5	6	0
6	A	385	0	0	8	0
6	B	358	0	0	11	0
All	All	7587	0	6754	92	0

The all-atom clashscore is defined as the number of clashes found per 1000 atoms (including hydrogen atoms). The all-atom clashscore for this structure is 7.

All (92) close contacts within the same asymmetric unit are listed below, sorted by their clash magnitude.

Atom-1	Atom-2	Interatomic distance (Å)	Clash overlap (Å)
1:B:400[B]:ARG:HH11	1:B:400[B]:ARG:HG3	1.17	1.04
1:B:314:MET:HB2	6:B:735:HOH:O	1.68	0.93
1:A:25[B]:TYR:HD1	1:B:314:MET:CE	1.85	0.90
1:A:25[A]:TYR:HE2	4:A:505:2B6:H12	1.36	0.88
1:A:168:CYS:HB2	6:A:985:HOH:O	1.74	0.88
1:A:178[B]:TRP:O	1:A:179[B]:THR:HB	1.76	0.83
1:B:61[B]:MET:HE1	1:B:400[B]:ARG:HB2	1.60	0.82
5:A:506:IMD:H2	6:A:941:HOH:O	1.78	0.82
1:A:175:HIS:O	5:A:506:IMD:H4	1.80	0.81
1:B:61[B]:MET:HE1	1:B:400[B]:ARG:CB	2.11	0.80
1:A:25[B]:TYR:HD1	1:B:314:MET:HE2	1.47	0.78
1:B:400[B]:ARG:HH11	1:B:400[B]:ARG:CG	1.97	0.76
1:A:25[A]:TYR:HE2	4:A:505:2B6:CAJ	1.99	0.76
1:B:61[A]:MET:HG2	6:B:718:HOH:O	1.88	0.74
1:A:178[B]:TRP:O	1:A:179[B]:THR:CB	2.36	0.73
1:B:175:HIS:HD2	6:B:744:HOH:O	1.72	0.70
1:A:178[A]:TRP:CZ2	1:B:137:GLN:HG3	2.27	0.69
1:A:157:TYR:HE2	4:A:505:2B6:H10	1.57	0.69
1:A:25[A]:TYR:CE2	4:A:505:2B6:CAJ	2.76	0.68
1:B:80:LEU:HD13	1:B:328[B]:VAL:HG23	1.76	0.68
1:A:65[A]:TRP:HB3	1:A:409[A]:MET:HE2	1.75	0.68
1:A:25[B]:TYR:HD1	1:B:314:MET:HE3	1.59	0.67
1:B:400[B]:ARG:HG3	1:B:400[B]:ARG:NH1	1.98	0.66
1:B:80:LEU:HD13	1:B:328[B]:VAL:CG2	2.25	0.66
1:A:398:TRP:HD1	6:A:782:HOH:O	1.79	0.66

*Continued on next page...*

*Continued from previous page...*

Atom-1	Atom-2	Interatomic distance (Å)	Clash overlap (Å)
1:B:310:ALA:HB1	6:B:811:HOH:O	1.96	0.66
1:B:310:ALA:HB3	6:B:938:HOH:O	1.94	0.65
1:A:25[A]:TYR:CE2	4:A:505:2B6:H12	2.26	0.65
1:A:91:MET:HG2	6:B:837:HOH:O	1.97	0.65
1:A:65[A]:TRP:CD1	1:A:65[A]:TRP:N	2.62	0.65
1:B:61[B]:MET:CE	1:B:400[B]:ARG:CB	2.74	0.64
1:B:25:TYR:OH	1:B:160[A]:ASP:OD2	2.16	0.63
1:B:140:ARG:NH2	6:B:742:HOH:O	2.32	0.63
1:A:25[B]:TYR:CD1	1:B:314:MET:HE2	2.31	0.63
1:A:40:ALA:HB1	1:A:42[B]:HIS:CE1	2.35	0.61
1:A:61:MET:HG2	6:A:782:HOH:O	2.00	0.61
1:B:157:TYR:HE2	4:B:501:2B6:H10	1.64	0.61
1:A:65[A]:TRP:HB3	1:A:409[A]:MET:CE	2.30	0.60
1:B:61[B]:MET:HE1	1:B:400[B]:ARG:HB3	1.84	0.59
1:A:25[B]:TYR:OH	1:A:160:ASP:OD2	2.21	0.59
1:B:400[B]:ARG:NH1	1:B:400[B]:ARG:CG	2.62	0.59
1:B:61[B]:MET:SD	1:B:400[B]:ARG:HB3	2.43	0.59
1:A:178[A]:TRP:HZ2	1:B:137:GLN:HG3	1.68	0.58
1:B:61[B]:MET:CE	1:B:400[B]:ARG:HB2	2.34	0.57
1:A:175:HIS:C	5:A:506:IMD:H4	2.27	0.55
1:B:61[B]:MET:CE	1:B:400[B]:ARG:HB3	2.36	0.55
1:A:91:MET:HE1	1:B:400[B]:ARG:HD2	1.89	0.54
1:A:25[B]:TYR:CZ	1:A:174:MET:SD	3.02	0.53
1:A:65[B]:TRP:HB2	1:A:283:LYS:HD3	1.91	0.53
1:B:81[A]:THR:HG21	6:B:821:HOH:O	2.07	0.53
1:B:400[B]:ARG:HD3	6:B:812:HOH:O	2.10	0.52
1:A:25[A]:TYR:HB3	1:B:314:MET:HE3	1.91	0.52
1:B:235[B]:ARG:HG3	1:B:235[B]:ARG:O	2.09	0.51
1:A:88:ASN:HD22	1:A:89:HIS:H	1.59	0.50
1:A:25[B]:TYR:CD1	1:B:314:MET:HE3	2.45	0.50
1:A:91:MET:CE	1:B:400[B]:ARG:HD2	2.42	0.49
1:B:61[B]:MET:HE2	1:B:400[B]:ARG:N	2.28	0.49
1:A:177:LEU:O	1:B:140:ARG:NH1	2.46	0.48
1:B:88:ASN:HD22	1:B:89:HIS:H	1.60	0.48
1:B:195:TYR:CE1	1:B:235[B]:ARG:HG2	2.48	0.48
1:B:65:TRP:HB2	1:B:283:LYS:HD3	1.96	0.47
1:A:105:LYS:NZ	1:A:109[B]:ASP:OD2	2.44	0.47
1:B:89:HIS:HA	1:B:323:PRO:HD2	1.97	0.47
1:B:175:HIS:CD2	6:B:744:HOH:O	2.55	0.47
1:B:88:ASN:ND2	1:B:89:HIS:H	2.13	0.47
1:A:25[B]:TYR:CD1	1:B:314:MET:CE	2.77	0.46

*Continued on next page...*

Continued from previous page...

Atom-1	Atom-2	Interatomic distance (Å)	Clash overlap (Å)
1:A:154:ARG:HH22	1:A:171[A]:HIS:HD2	1.64	0.46
1:A:165:MET:O	5:A:506:IMD:H5	2.15	0.46
5:A:506:IMD:C4	6:A:923:HOH:O	2.63	0.46
1:A:81:THR:O	1:A:85:ARG:HG2	2.16	0.45
1:A:238:HIS:HD2	6:A:836:HOH:O	2.01	0.44
1:B:66:THR:HB	1:B:288:GLY:HA2	2.00	0.44
1:A:89:HIS:HA	1:A:323:PRO:HD2	1.98	0.44
6:A:938:HOH:O	1:B:105:LYS:HE3	2.16	0.44
1:B:244:CYS:HB3	1:B:249:VAL:O	2.17	0.44
1:B:218[B]:VAL:O	1:B:218[B]:VAL:HG13	2.18	0.44
1:B:252:ILE:HG12	1:B:278:ILE:HB	2.00	0.43
1:B:88:ASN:HD22	1:B:88:ASN:N	2.16	0.43
1:B:24:PRO:HB2	4:B:501:2B6:H13	1.99	0.43
1:A:181:VAL:HG22	6:B:742:HOH:O	2.19	0.43
1:A:286:THR:HG22	1:A:329[A]:SER:OG	2.19	0.43
1:A:133:LYS:HG3	1:B:178:TRP:CH2	2.54	0.43
1:B:178:TRP:HB3	1:B:181:VAL:HG22	2.00	0.43
1:A:180:ASP:OD2	1:A:180:ASP:N	2.47	0.42
6:A:708:HOH:O	1:B:91:MET:HG2	2.20	0.42
1:A:148[B]:ARG:NH1	1:A:148[B]:ARG:HB3	2.35	0.42
1:A:179[B]:THR:OG1	5:A:506:IMD:N3	2.46	0.42
1:A:252:ILE:HG12	1:A:278:ILE:HB	2.01	0.41
1:B:97:HIS:CE1	1:B:100:ALA:HB2	2.55	0.41
1:B:178:TRP:HE3	1:B:181:VAL:HG21	1.86	0.41
1:A:178[B]:TRP:CH2	1:B:133:LYS:HG3	2.56	0.41
1:B:80:LEU:HD22	1:B:328[B]:VAL:HG21	2.03	0.40

There are no symmetry-related clashes.

## 5.3 Torsion angles [i](#)

### 5.3.1 Protein backbone [i](#)

In the following table, the Percentiles column shows the percent Ramachandran outliers of the chain as a percentile score with respect to all X-ray entries followed by that with respect to entries of similar resolution.

The Analysed column shows the number of residues for which the backbone conformation was analysed, and the total number of residues.

Mol	Chain	Analysed	Favoured	Allowed	Outliers	Percentiles	
1	A	452/457 (99%)	432 (96%)	17 (4%)	3 (1%)	25	9
1	B	447/457 (98%)	438 (98%)	6 (1%)	3 (1%)	25	9
All	All	899/914 (98%)	870 (97%)	23 (3%)	6 (1%)	25	9

All (6) Ramachandran outliers are listed below:

Mol	Chain	Res	Type
1	A	172	GLY
1	A	283	LYS
1	B	283	LYS
1	A	316	GLY
1	B	316	GLY
1	B	228	GLY

### 5.3.2 Protein sidechains ⓘ

In the following table, the Percentiles column shows the percent sidechain outliers of the chain as a percentile score with respect to all X-ray entries followed by that with respect to entries of similar resolution.

The Analysed column shows the number of residues for which the sidechain conformation was analysed, and the total number of residues.

Mol	Chain	Analysed	Rotameric	Outliers	Percentiles	
1	A	351/346 (101%)	344 (98%)	7 (2%)	60	42
1	B	345/346 (100%)	339 (98%)	6 (2%)	66	50
All	All	696/692 (101%)	683 (98%)	13 (2%)	66	45

All (13) residues with a non-rotameric sidechain are listed below:

Mol	Chain	Res	Type
1	A	22[A]	TRP
1	A	22[B]	TRP
1	A	65[A]	TRP
1	A	65[B]	TRP
1	A	88	ASN
1	A	153	TRP
1	A	180	ASP
1	B	31	GLU
1	B	88	ASN
1	B	153	TRP

*Continued on next page...*

*Continued from previous page...*

Mol	Chain	Res	Type
1	B	175	HIS
1	B	182	LEU
1	B	314	MET

Some sidechains can be flipped to improve hydrogen bonding and reduce clashes. All (5) such sidechains are listed below:

Mol	Chain	Res	Type
1	A	88	ASN
1	A	209	GLN
1	B	88	ASN
1	B	175	HIS
1	B	209	GLN

### 5.3.3 RNA [i](#)

There are no RNA molecules in this entry.

## 5.4 Non-standard residues in protein, DNA, RNA chains [i](#)

There are no non-standard protein/DNA/RNA residues in this entry.

## 5.5 Carbohydrates [i](#)

There are no carbohydrates in this entry.

## 5.6 Ligand geometry [i](#)

Of 8 ligands modelled in this entry, 1 is monoatomic - leaving 7 for Mogul analysis.

In the following table, the Counts columns list the number of bonds (or angles) for which Mogul statistics could be retrieved, the number of bonds (or angles) that are observed in the model and the number of bonds (or angles) that are defined in the chemical component dictionary. The Link column lists molecule types, if any, to which the group is linked. The Z score for a bond length (or angle) is the number of standard deviations the observed value is removed from the expected value. A bond length (or angle) with  $|Z| > 2$  is considered an outlier worth inspection. RMSZ is the root-mean-square of all Z scores of the bond lengths (or angles).

Mol	Type	Chain	Res	Link	Bond lengths			Bond angles		
					Counts	RMSZ	$\# Z  > 2$	Counts	RMSZ	$\# Z  > 2$
2	EDO	A	501	-	3,3,3	0.45	0	2,2,2	0.39	0

Mol	Type	Chain	Res	Link	Bond lengths			Bond angles		
					Counts	RMSZ	# Z  > 2	Counts	RMSZ	# Z  > 2
2	EDO	A	502	-	3,3,3	0.44	0	2,2,2	0.42	0
2	EDO	A	504	-	3,3,3	0.46	0	2,2,2	0.30	0
4	2B6	A	505	-	28,30,30	2.72	9 (32%)	30,43,43	1.60	7 (23%)
5	IMD	A	506	-	3,5,5	0.51	0	4,5,5	0.44	0
4	2B6	B	501	-	28,30,30	2.53	9 (32%)	30,43,43	1.67	4 (13%)
2	EDO	B	502	-	3,3,3	0.46	0	2,2,2	0.30	0

In the following table, the Chirals column lists the number of chiral outliers, the number of chiral centers analysed, the number of these observed in the model and the number defined in the chemical component dictionary. Similar counts are reported in the Torsion and Rings columns. '-' means no outliers of that kind were identified.

Mol	Type	Chain	Res	Link	Chirals	Torsions	Rings
2	EDO	A	501	-	-	0/1/1/1	0/0/0/0
2	EDO	A	502	-	-	0/1/1/1	0/0/0/0
2	EDO	A	504	-	-	0/1/1/1	0/0/0/0
4	2B6	A	505	-	-	1/10/16/16	0/3/3/3
5	IMD	A	506	-	-	0/0/0/0	0/1/1/1
4	2B6	B	501	-	-	1/10/16/16	0/3/3/3
2	EDO	B	502	-	-	0/1/1/1	0/0/0/0

All (18) bond length outliers are listed below:

Mol	Chain	Res	Type	Atoms	Z	Observed(Å)	Ideal(Å)
4	A	505	2B6	CAG-CAY	-6.98	1.38	1.51
4	A	505	2B6	CAX-SAS	-6.20	1.65	1.73
4	B	501	2B6	CAG-CAY	-6.13	1.40	1.51
4	B	501	2B6	CAA-CAU	-5.18	1.40	1.50
4	B	501	2B6	CAX-SAS	-4.93	1.66	1.73
4	A	505	2B6	CAA-CAU	-4.89	1.41	1.50
4	B	501	2B6	CAK-CBA	-4.73	1.34	1.40
4	A	505	2B6	CAK-CBA	-4.72	1.34	1.40
4	A	505	2B6	CAJ-CAZ	-4.30	1.34	1.41
4	B	501	2B6	CAJ-CAZ	-4.15	1.34	1.41
4	B	501	2B6	CAM-CAW	-3.51	1.41	1.50
4	A	505	2B6	CAM-CAW	-3.27	1.41	1.50
4	A	505	2B6	PBB-OAF	2.00	1.57	1.50
4	B	501	2B6	CAX-NAP	2.08	1.34	1.31
4	A	505	2B6	NAO-NAN	2.37	1.33	1.25
4	B	501	2B6	CAL-NAQ	2.75	1.40	1.34
4	B	501	2B6	PBB-OAF	2.82	1.60	1.50
4	A	505	2B6	CAL-NAQ	3.16	1.41	1.34



All (11) bond angle outliers are listed below:

Mol	Chain	Res	Type	Atoms	Z	Observed(°)	Ideal(°)
4	A	505	2B6	CAZ-CBA-SAS	-3.32	107.86	112.03
4	B	501	2B6	CAZ-CBA-SAS	-3.26	107.94	112.03
4	A	505	2B6	CAH-CAI-CAK	-2.43	116.99	120.45
4	B	501	2B6	CAH-CAI-CAK	-2.09	117.47	120.45
4	A	505	2B6	CAV-CAU-NAQ	-2.03	118.08	120.75
4	A	505	2B6	OAC-PBB-OAR	2.13	112.41	106.73
4	A	505	2B6	CAK-CBA-CAZ	2.19	123.09	120.83
4	B	501	2B6	CBA-CAZ-NAP	2.43	113.65	108.04
4	A	505	2B6	CBA-CAZ-NAP	2.78	114.44	108.04
4	A	505	2B6	CAX-NAP-CAZ	4.18	112.03	103.83
4	B	501	2B6	CAX-NAP-CAZ	5.52	114.67	103.83

There are no chirality outliers.

All (2) torsion outliers are listed below:

Mol	Chain	Res	Type	Atoms
4	B	501	2B6	CAW-CAY-CAG-NAN
4	A	505	2B6	CAW-CAY-CAG-NAN

There are no ring outliers.

3 monomers are involved in 13 short contacts:

Mol	Chain	Res	Type	Clashes	Symm-Clashes
4	A	505	2B6	5	0
5	A	506	IMD	6	0
4	B	501	2B6	2	0

## 5.7 Other polymers [i](#)

There are no such residues in this entry.

## 5.8 Polymer linkage issues [i](#)

There are no chain breaks in this entry.

## 6 Fit of model and data ⓘ

### 6.1 Protein, DNA and RNA chains ⓘ

In the following table, the column labelled ‘#RSRZ > 2’ contains the number (and percentage) of RSRZ outliers, followed by percent RSRZ outliers for the chain as percentile scores relative to all X-ray entries and entries of similar resolution. The OWAB column contains the minimum, median, 95<sup>th</sup> percentile and maximum values of the occupancy-weighted average B-factor per residue. The column labelled ‘Q < 0.9’ lists the number of (and percentage) of residues with an average occupancy less than 0.9.

Mol	Chain	Analysed	<RSRZ>	#RSRZ > 2		OWAB(Å <sup>2</sup> )	Q < 0.9
1	A	428/457 (93%)	-0.01	17 (3%)	39 44	7, 14, 27, 39	0
1	B	428/457 (93%)	0.01	15 (3%)	44 50	8, 15, 34, 42	4 (0%)
All	All	856/914 (93%)	0.00	32 (3%)	42 48	7, 15, 31, 42	4 (0%)

All (32) RSRZ outliers are listed below:

Mol	Chain	Res	Type	RSRZ
1	A	179[A]	THR	6.7
1	A	32	ALA	6.0
1	A	171[A]	HIS	5.8
1	B	402	PHE	5.4
1	A	33	VAL	4.7
1	B	177	LEU	4.5
1	A	174	MET	4.4
1	B	307	ALA	4.1
1	B	309	ALA	3.3
1	A	175	HIS	3.2
1	B	311	GLY	3.0
1	A	172	GLY	2.8
1	A	402	PHE	2.8
1	B	64	TRP	2.8
1	B	179	THR	2.7
1	B	180	ASP	2.7
1	A	31	GLU	2.7
1	A	85	ARG	2.5
1	A	51	ASP	2.5
1	A	65[A]	TRP	2.5
1	A	435	SER	2.4
1	B	310	ALA	2.4
1	B	385	LEU	2.4
1	B	174	MET	2.4

*Continued on next page...*

*Continued from previous page...*

Mol	Chain	Res	Type	RSRZ
1	B	33	VAL	2.3
1	B	30	ARG	2.2
1	A	180	ASP	2.2
1	B	181	VAL	2.1
1	A	25[A]	TYR	2.1
1	B	32	ALA	2.1
1	A	178[A]	TRP	2.0
1	A	177	LEU	2.0

## 6.2 Non-standard residues in protein, DNA, RNA chains ⓘ

There are no non-standard protein/DNA/RNA residues in this entry.

## 6.3 Carbohydrates ⓘ

There are no carbohydrates in this entry.

## 6.4 Ligands ⓘ

In the following table, the Atoms column lists the number of modelled atoms in the group and the number defined in the chemical component dictionary. LLDF column lists the quality of electron density of the group with respect to its neighbouring residues in protein, DNA or RNA chains. The B-factors column lists the minimum, median, 95<sup>th</sup> percentile and maximum values of B factors of atoms in the group. The column labelled 'Q< 0.9' lists the number of atoms with occupancy less than 0.9.

Mol	Type	Chain	Res	Atoms	RSCC	RSR	LLDF	B-factors(Å <sup>2</sup> )	Q<0.9
2	EDO	A	504	4/4	0.82	0.23	42.43	30,32,32,33	0
4	2B6	A	505	28/28	0.89	0.20	2.61	11,14,34,37	0
2	EDO	B	502	4/4	0.76	0.13	1.25	29,30,30,31	0
4	2B6	B	501	28/28	0.92	0.14	1.16	11,13,27,27	0
2	EDO	A	502	4/4	0.83	0.12	0.92	32,33,33,34	0
5	IMD	A	506	5/5	0.88	0.25	0.74	23,24,24,25	0
3	CL	A	503	1/1	0.94	0.07	-	33,33,33,33	0
2	EDO	A	501	4/4	0.81	0.13	-	29,29,29,30	0

## 6.5 Other polymers ⓘ

There are no such residues in this entry.