



Full wwPDB X-ray Structure Validation Report ⓘ

Feb 14, 2017 – 10:23 pm GMT

PDB ID : 4MQU
Title : Human GKRP complexed to AMG-3969 and S6P
Authors : St Jean, D.J.; Ashton, K.S.; Bartberger, M.D.; Chen, J.; Chmait, S.; Cupples, R.; Galbreath, E.; Helmering, J.; Jordan, S.R.; Liu, L.
Deposited on : 2013-09-16
Resolution : 2.22 Å(reported)

This is a Full wwPDB X-ray Structure Validation Report for a publicly released PDB entry.

We welcome your comments at validation@mail.wwpdb.org

A user guide is available at

<http://wwpdb.org/validation/2016/XrayValidationReportHelp>

with specific help available everywhere you see the ⓘ symbol.

The following versions of software and data (see [references ⓘ](#)) were used in the production of this report:

MolProbity : 4.02b-467
Mogul : 1.7.2 (RC1), CSD as538be (2017)
Xtriage (Phenix) : 1.9-1692
EDS : trunk28620
Percentile statistics : 20161228.v01 (using entries in the PDB archive December 28th 2016)
Refmac : 5.8.0135
CCP4 : 6.5.0
Ideal geometry (proteins) : Engh & Huber (2001)
Ideal geometry (DNA, RNA) : Parkinson et al. (1996)
Validation Pipeline (wwPDB-VP) : recalc28949

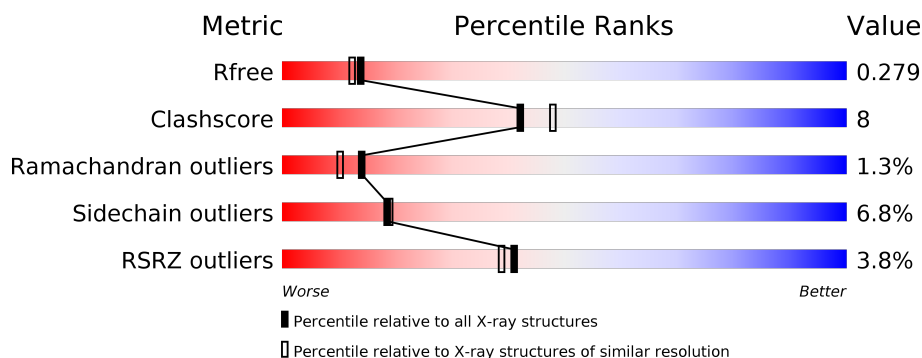
1 Overall quality at a glance

The following experimental techniques were used to determine the structure:

X-RAY DIFFRACTION

The reported resolution of this entry is 2.22 Å.

Percentile scores (ranging between 0-100) for global validation metrics of the entry are shown in the following graphic. The table shows the number of entries on which the scores are based.



Metric	Whole archive (#Entries)	Similar resolution (#Entries, resolution range(Å))
R_{free}	100719	4744 (2.24-2.20)
Clashscore	112137	5509 (2.24-2.20)
Ramachandran outliers	110173	5427 (2.24-2.20)
Sidechain outliers	110143	5428 (2.24-2.20)
RSRZ outliers	101464	4776 (2.24-2.20)

The table below summarises the geometric issues observed across the polymeric chains and their fit to the electron density. The red, orange, yellow and green segments on the lower bar indicate the fraction of residues that contain outliers for ≥ 3 , 2, 1 and 0 types of geometric quality criteria. A grey segment represents the fraction of residues that are not modelled. The numeric value for each fraction is indicated below the corresponding segment, with a dot representing fractions $\leq 5\%$. The upper red bar (where present) indicates the fraction of residues that have poor fit to the electron density. The numeric value is given above the bar.

Mol	Chain	Length	Quality of chain
1	A	636	<div> <div>4%</div> <div> <div></div> <div>70%</div> <div>18%</div> <div>• • 8%</div> </div> </div>
1	B	636	<div> <div>3%</div> <div> <div></div> <div>78%</div> <div>13%</div> <div>• 7%</div> </div> </div>

The following table lists non-polymeric compounds, carbohydrate monomers and non-standard residues in protein, DNA, RNA chains that are outliers for geometric or electron-density-fit criteria:

Mol	Type	Chain	Res	Chirality	Geometry	Clashes	Electron density
4	IOD	A	709	-	-	X	-
4	IOD	B	714	-	-	X	-

2 Entry composition

There are 7 unique types of molecules in this entry. The entry contains 9456 atoms, of which 0 are hydrogens and 0 are deuteriums.

In the tables below, the ZeroOcc column contains the number of atoms modelled with zero occupancy, the AltConf column contains the number of residues with at least one atom in alternate conformation and the Trace column contains the number of residues modelled with at most 2 atoms.

- Molecule 1 is a protein called Glucokinase regulatory protein.

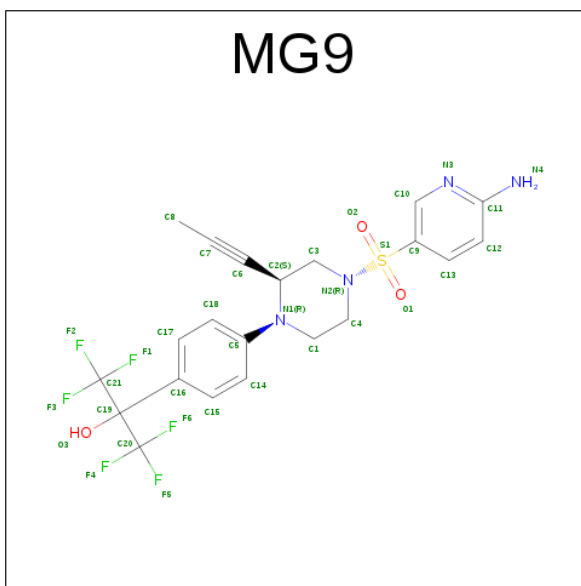
Mol	Chain	Residues	Atoms					ZeroOcc	AltConf	Trace
1	A	585	Total	C	N	O	S	0	0	0
			4521	2882	774	841	24			
1	B	590	Total	C	N	O	S	0	0	0
			4554	2901	781	848	24			

There are 22 discrepancies between the modelled and reference sequences:

Chain	Residue	Modelled	Actual	Comment	Reference
A	-10	MET	-	EXPRESSION TAG	UNP Q14397
A	-9	HIS	-	EXPRESSION TAG	UNP Q14397
A	-8	HIS	-	EXPRESSION TAG	UNP Q14397
A	-7	HIS	-	EXPRESSION TAG	UNP Q14397
A	-6	HIS	-	EXPRESSION TAG	UNP Q14397
A	-5	HIS	-	EXPRESSION TAG	UNP Q14397
A	-4	HIS	-	EXPRESSION TAG	UNP Q14397
A	-3	ASP	-	EXPRESSION TAG	UNP Q14397
A	-2	GLU	-	EXPRESSION TAG	UNP Q14397
A	-1	VAL	-	EXPRESSION TAG	UNP Q14397
A	0	ASP	-	EXPRESSION TAG	UNP Q14397
B	-10	MET	-	EXPRESSION TAG	UNP Q14397
B	-9	HIS	-	EXPRESSION TAG	UNP Q14397
B	-8	HIS	-	EXPRESSION TAG	UNP Q14397
B	-7	HIS	-	EXPRESSION TAG	UNP Q14397
B	-6	HIS	-	EXPRESSION TAG	UNP Q14397
B	-5	HIS	-	EXPRESSION TAG	UNP Q14397
B	-4	HIS	-	EXPRESSION TAG	UNP Q14397
B	-3	ASP	-	EXPRESSION TAG	UNP Q14397
B	-2	GLU	-	EXPRESSION TAG	UNP Q14397
B	-1	VAL	-	EXPRESSION TAG	UNP Q14397
B	0	ASP	-	EXPRESSION TAG	UNP Q14397

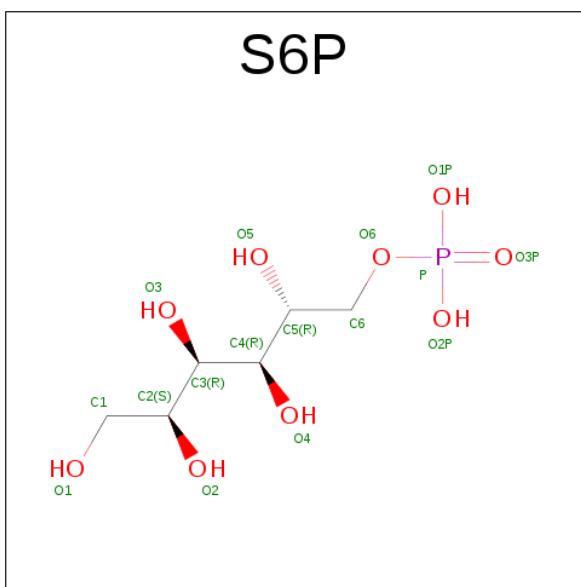
- Molecule 2 is 2-{4-[(2S)-4-[(6-AMINOPYRIDIN-3-YL)SULFONYL]-2-(PROP-1-YN-1-YL)PIPERAZIN-1-YL]PHENYL}-1,1,1,3,3,3-HEXAFLUOROPROPAN-2-OL (three-letter

code: MG9) (formula: $C_{21}H_{20}F_6N_4O_3S$).



Mol	Chain	Residues	Atoms						ZeroOcc	AltConf
2	A	1	Total	C	F	N	O	S	0	0
			35	21	6	4	3	1		
2	B	1	Total	C	F	N	O	S	0	0
			35	21	6	4	3	1		

- Molecule 3 is SUGAR (D-SORBITOL-6-PHOSPHATE) (three-letter code: S6P) (formula: $C_6H_{15}O_9P$).

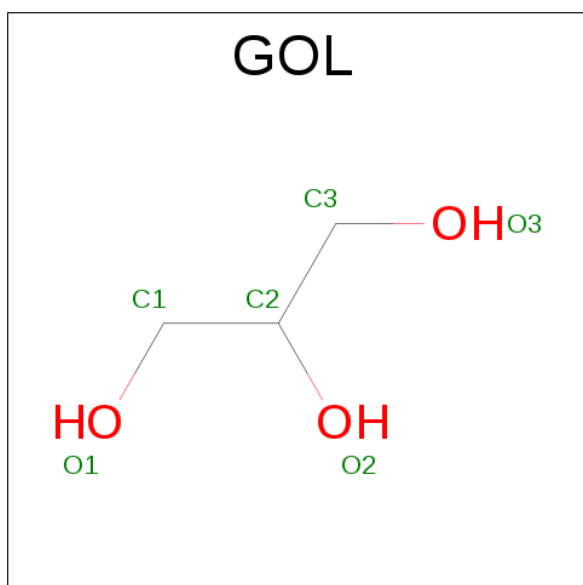


Mol	Chain	Residues	Atoms				ZeroOcc	AltConf
3	A	1	Total	C	O	P	0	0
			16	6	9	1		
3	B	1	Total	C	O	P	0	0
			16	6	9	1		

- Molecule 4 is IODIDE ION (three-letter code: IOD) (formula: I).

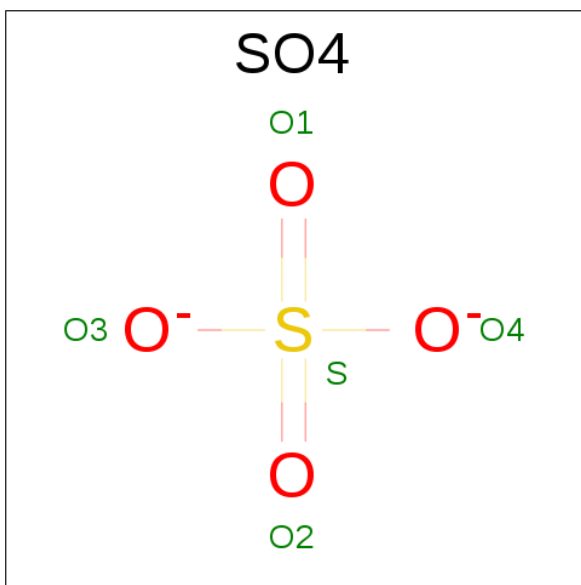
Mol	Chain	Residues	Atoms		ZeroOcc	AltConf
4	B	13	Total	I	0	0
			13	13		
4	A	12	Total	I	0	0
			12	12		

- Molecule 5 is GLYCEROL (three-letter code: GOL) (formula: C₃H₈O₃).



Mol	Chain	Residues	Atoms			ZeroOcc	AltConf
5	B	1	Total	C	O	0	0
			6	3	3		

- Molecule 6 is SULFATE ION (three-letter code: SO4) (formula: O₄S).



Mol	Chain	Residues	Atoms			ZeroOcc	AltConf
6	B	1	Total	O	S	0	0
			5	4	1		
6	B	1	Total	O	S	0	0
			5	4	1		
6	B	1	Total	O	S	0	0
			5	4	1		

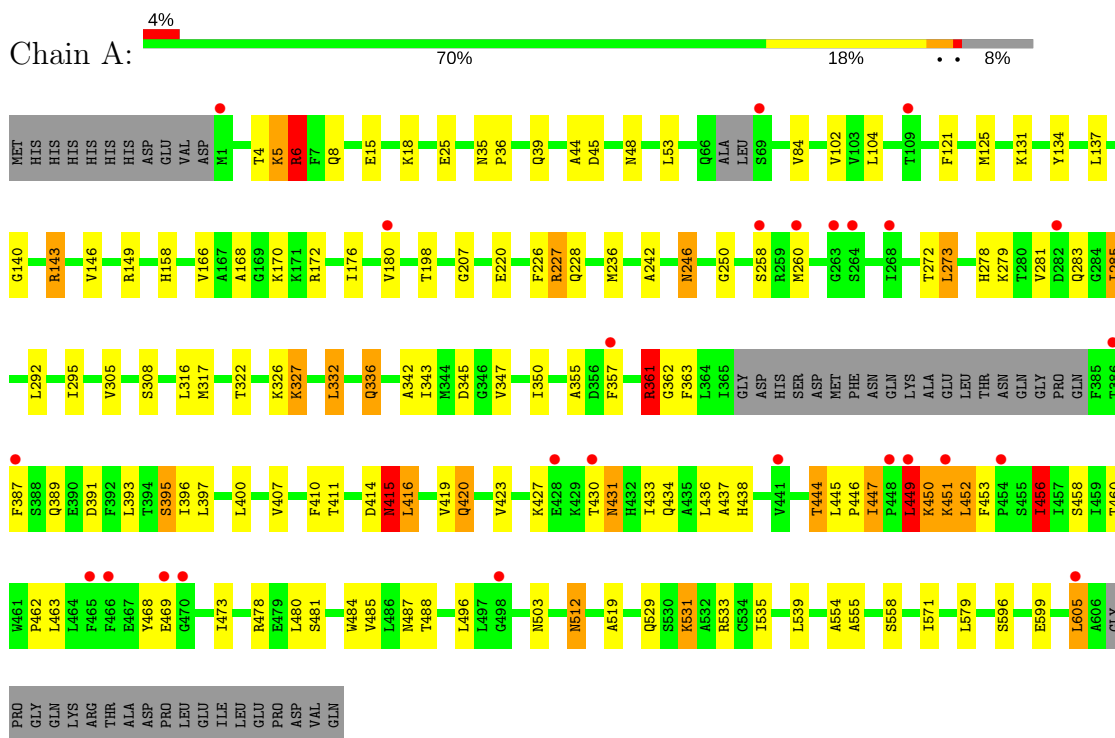
- Molecule 7 is water.

Mol	Chain	Residues	Atoms		ZeroOcc	AltConf
7	A	97	Total	O	0	0
			97	97		
7	B	136	Total	O	0	0
			136	136		

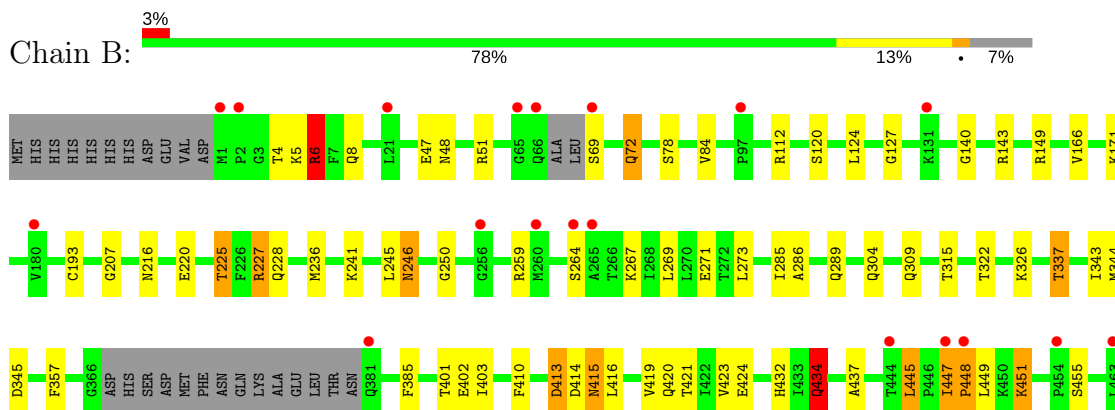
3 Residue-property plots

These plots are drawn for all protein, RNA and DNA chains in the entry. The first graphic for a chain summarises the proportions of the various outlier classes displayed in the second graphic. The second graphic shows the sequence view annotated by issues in geometry and electron density. Residues are color-coded according to the number of geometric quality criteria for which they contain at least one outlier: green = 0, yellow = 1, orange = 2 and red = 3 or more. A red dot above a residue indicates a poor fit to the electron density ($RSRZ > 2$). Stretches of 2 or more consecutive residues without any outlier are shown as a green connector. Residues present in the sample, but not in the model, are shown in grey.

- Molecule 1: Glucokinase regulatory protein



- Molecule 1: Glucokinase regulatory protein



N471	K475	E479 L480 S481	V485	N503	D507	A521	Q529	A532 R533	E536	A554 A555 P556 S557 S558	Q562	E568	I571 P572	A606 GLY PRO GLY GLN LYS ARG THR ALA ASP PRO LEU GLU ILE LEU GLU PRO ASP VAL GLN
------	------	----------------------	------	------	------	------	------	--------------	------	--------------------------------------	------	------	--------------	---

4 Data and refinement statistics

Property	Value	Source
Space group	P 65	Depositor
Cell constants a, b, c, α , β , γ	149.07Å 149.07Å 132.46Å 90.00° 90.00° 120.00°	Depositor
Resolution (Å)	35.80 – 2.22 35.80 – 2.22	Depositor EDS
% Data completeness (in resolution range)	75.2 (35.80-2.22) 75.2 (35.80-2.22)	Depositor EDS
R_{merge}	(Not available)	Depositor
R_{sym}	(Not available)	Depositor
$\langle I/\sigma(I) \rangle$ ¹	3.34 (at 2.22Å)	Xtriage
Refinement program	REFMAC 5.7.0032	Depositor
R, R_{free}	0.212 , 0.277 0.218 , 0.279	Depositor DCC
R_{free} test set	3100 reflections (5.27%)	DCC
Wilson B-factor (Å ²)	39.2	Xtriage
Anisotropy	0.257	Xtriage
Bulk solvent k_{sol} (e/Å ³), B_{sol} (Å ²)	0.33 , 38.4	EDS
L-test for twinning ²	$\langle L \rangle = 0.52$, $\langle L^2 \rangle = 0.36$	Xtriage
Estimated twinning fraction	0.019 for h,-h-k,-l	Xtriage
F_o, F_c correlation	0.94	EDS
Total number of atoms	9456	wwPDB-VP
Average B, all atoms (Å ²)	45.0	wwPDB-VP

Xtriage's analysis on translational NCS is as follows: *The largest off-origin peak in the Patterson function is 2.74% of the height of the origin peak. No significant pseudotranslation is detected.*

¹Intensities estimated from amplitudes.

²Theoretical values of $\langle |L| \rangle$, $\langle L^2 \rangle$ for acentric reflections are 0.5, 0.333 respectively for untwinned datasets, and 0.375, 0.2 for perfectly twinned datasets.

5 Model quality

5.1 Standard geometry

Bond lengths and bond angles in the following residue types are not validated in this section: GOL, MG9, IOD, SO4, S6P

The Z score for a bond length (or angle) is the number of standard deviations the observed value is removed from the expected value. A bond length (or angle) with $|Z| > 5$ is considered an outlier worth inspection. RMSZ is the root-mean-square of all Z scores of the bond lengths (or angles).

Mol	Chain	Bond lengths		Bond angles	
		RMSZ	$\# Z > 5$	RMSZ	$\# Z > 5$
1	A	0.71	0/4603	0.88	8/6228 (0.1%)
1	B	0.74	0/4637	0.86	6/6274 (0.1%)
All	All	0.73	0/9240	0.87	14/12502 (0.1%)

There are no bond length outliers.

All (14) bond angle outliers are listed below:

Mol	Chain	Res	Type	Atoms	Z	Observed(°)	Ideal(°)
1	B	259	ARG	NE-CZ-NH2	-10.59	115.01	120.30
1	B	259	ARG	NE-CZ-NH1	9.65	125.13	120.30
1	A	478	ARG	NE-CZ-NH1	7.79	124.19	120.30
1	B	6	ARG	NE-CZ-NH1	7.72	124.16	120.30
1	B	227	ARG	NE-CZ-NH2	-6.64	116.98	120.30
1	A	361	ARG	NE-CZ-NH1	6.62	123.61	120.30
1	A	227	ARG	NE-CZ-NH1	5.91	123.26	120.30
1	A	478	ARG	NE-CZ-NH2	-5.91	117.34	120.30
1	B	227	ARG	NE-CZ-NH1	5.78	123.19	120.30
1	B	434	GLN	N-CA-C	-5.31	96.66	111.00
1	A	6	ARG	NE-CZ-NH1	5.21	122.90	120.30
1	A	143	ARG	NE-CZ-NH1	5.20	122.90	120.30
1	A	227	ARG	NE-CZ-NH2	-5.16	117.72	120.30
1	A	449	LEU	CA-CB-CG	5.13	127.10	115.30

There are no chirality outliers.

There are no planarity outliers.

5.2 Too-close contacts ⓘ

In the following table, the Non-H and H(model) columns list the number of non-hydrogen atoms and hydrogen atoms in the chain respectively. The H(added) column lists the number of hydrogen atoms added and optimized by MolProbity. The Clashes column lists the number of clashes within the asymmetric unit, whereas Symm-Clashes lists symmetry related clashes.

Mol	Chain	Non-H	H(model)	H(added)	Clashes	Symm-Clashes
1	A	4521	0	4618	82	0
1	B	4554	0	4647	65	0
2	A	35	0	20	0	0
2	B	35	0	20	1	0
3	A	16	0	13	0	0
3	B	16	0	13	0	0
4	A	12	0	0	6	0
4	B	13	0	0	5	0
5	B	6	0	8	2	0
6	B	15	0	0	0	0
7	A	97	0	0	1	0
7	B	136	0	0	1	0
All	All	9456	0	9339	146	0

The all-atom clashscore is defined as the number of clashes found per 1000 atoms (including hydrogen atoms). The all-atom clashscore for this structure is 8.

All (146) close contacts within the same asymmetric unit are listed below, sorted by their clash magnitude.

Atom-1	Atom-2	Interatomic distance (Å)	Clash overlap (Å)
1:B:216:ASN:OD1	1:B:225:THR:HG21	1.69	0.93
1:A:447:ILE:HG22	1:A:450:LYS:N	1.90	0.86
1:A:447:ILE:HG23	1:A:449:LEU:HG	1.59	0.82
1:B:448:PRO:HG3	1:B:451:LYS:HB2	1.62	0.81
1:B:532:ALA:O	1:B:536:GLU:HG3	1.80	0.81
1:A:449:LEU:O	1:A:451:LYS:N	2.15	0.80
1:B:120:SER:OG	1:B:475:LYS:NZ	2.27	0.67
1:B:5:LYS:HB2	4:B:710:IOD:I	2.65	0.67
1:B:432:HIS:HE1	7:B:903:HOH:O	1.78	0.66
1:A:512:ASN:C	1:A:512:ASN:HD22	1.99	0.66
1:A:317:MET:HE2	1:A:496:LEU:HD11	1.78	0.64
1:A:419:VAL:O	1:A:423:VAL:HG23	1.98	0.63
1:B:286:ALA:HA	1:B:289:GLN:HE21	1.62	0.63
1:A:411:THR:HG22	1:A:438:HIS:HB2	1.79	0.62
1:A:596:SER:OG	1:A:599:GLU:HG3	2.00	0.61

Continued on next page...

Continued from previous page...

Atom-1	Atom-2	Interatomic distance (Å)	Clash overlap (Å)
1:A:430:THR:O	1:A:431:ASN:ND2	2.24	0.61
1:B:448:PRO:HA	1:B:449:LEU:C	2.20	0.61
1:A:414:ASP:O	1:A:415:ASN:CB	2.48	0.60
1:B:419:VAL:O	1:B:423:VAL:HG12	2.02	0.59
1:B:401:THR:HG22	1:B:403:ILE:H	1.67	0.59
1:A:416:LEU:O	1:A:420:GLN:HG2	2.03	0.59
1:A:5:LYS:HB2	4:A:709:IOD:I	2.73	0.58
1:A:579:LEU:HD11	1:A:605:LEU:HD13	1.84	0.58
1:B:6:ARG:HD3	1:B:555:ALA:O	2.04	0.58
1:A:220:GLU:OE2	1:A:558:SER:OG	2.20	0.58
1:B:445:LEU:HG	4:B:713:IOD:I	2.74	0.58
1:A:447:ILE:CG2	1:A:449:LEU:HG	2.33	0.58
1:A:4:THR:O	1:A:8:GLN:HB2	2.04	0.57
1:A:6:ARG:HD2	1:A:554:ALA:O	2.04	0.57
1:A:15:GLU:H	1:A:18:LYS:HE2	1.70	0.56
1:A:444:THR:O	1:A:446:PRO:HD3	2.04	0.56
1:A:283:GLN:HB2	1:A:285:ILE:HG22	1.86	0.56
1:A:36:PRO:O	1:A:39:GLN:HG2	2.05	0.56
1:A:104:LEU:HD23	1:A:176:ILE:HB	1.86	0.56
1:A:453:PHE:CB	1:A:456:ILE:HG23	2.36	0.55
1:A:451:LYS:HA	1:A:453:PHE:N	2.21	0.55
1:A:410:PHE:O	1:A:437:ALA:HA	2.07	0.55
1:B:420:GLN:HA	1:B:423:VAL:CG1	2.38	0.54
1:A:393:LEU:O	1:A:397:LEU:HB3	2.07	0.54
1:B:568:GLU:HA	5:B:716:GOL:H32	1.90	0.54
1:A:447:ILE:HG22	1:A:449:LEU:C	2.28	0.53
1:A:140:GLY:H	1:A:158:HIS:HE1	1.55	0.53
1:A:6:ARG:HD3	1:A:555:ALA:O	2.09	0.53
1:B:414:ASP:O	1:B:416:LEU:HD13	2.09	0.53
1:A:121:PHE:O	1:A:125:MET:HG3	2.10	0.52
1:A:272:THR:HA	1:A:295:ILE:HG21	1.89	0.52
1:A:480:LEU:HD21	1:A:484:TRP:CH2	2.44	0.52
1:B:124:LEU:HD23	1:B:124:LEU:O	2.10	0.52
1:B:220:GLU:OE1	1:B:558:SER:OG	2.26	0.52
1:A:228:GLN:HE22	1:B:228:GLN:HE22	1.57	0.52
1:B:140:GLY:O	1:B:149:ARG:NH2	2.43	0.52
1:A:414:ASP:O	1:A:415:ASN:HB3	2.10	0.52
1:A:44:ALA:HB1	1:A:48:ASN:HB3	1.92	0.52
1:B:481:SER:O	1:B:485:VAL:HG23	2.09	0.51
1:A:146:VAL:O	1:A:146:VAL:CG1	2.59	0.51
1:B:315:THR:HG22	1:B:434:GLN:NE2	2.26	0.51

Continued on next page...

Continued from previous page...

Atom-1	Atom-2	Interatomic distance (Å)	Clash overlap (Å)
1:A:332:LEU:HB3	1:A:342:ALA:HB1	1.92	0.51
1:B:112:ARG:HD3	1:B:344:MET:HG2	1.93	0.51
1:A:529:GLN:HE22	1:A:533:ARG:HH21	1.57	0.51
1:B:246:ASN:HD22	1:B:246:ASN:N	2.08	0.51
1:A:336:GLN:NE2	1:A:414:ASP:OD1	2.44	0.50
1:B:413:ASP:N	1:B:413:ASP:OD1	2.45	0.49
1:A:447:ILE:O	1:A:450:LYS:HB2	2.13	0.49
4:A:712:IOD:I	4:B:714:IOD:I	3.70	0.49
1:A:468:TYR:HB2	4:A:703:IOD:I	2.83	0.49
1:A:453:PHE:HB2	1:A:456:ILE:HG23	1.94	0.49
1:B:245:LEU:HG	1:B:269:LEU:HD21	1.95	0.49
1:A:389:GLN:O	1:A:393:LEU:HD12	2.13	0.49
1:A:140:GLY:N	1:A:158:HIS:HE1	2.11	0.48
1:A:343:ILE:HA	1:A:362:GLY:HA3	1.96	0.48
1:B:236:MET:HE2	1:B:241:LYS:HB3	1.96	0.48
1:B:236:MET:CE	1:B:241:LYS:HB3	2.44	0.48
1:A:146:VAL:O	1:A:347:VAL:HG21	2.14	0.48
1:A:433:ILE:O	1:A:434:GLN:HG2	2.13	0.48
1:B:448:PRO:HD3	1:B:451:LYS:CG	2.44	0.47
1:A:207:GLY:O	1:A:246:ASN:HA	2.14	0.47
1:A:350:ILE:HA	1:A:355:ALA:O	2.15	0.47
1:B:246:ASN:HD22	1:B:246:ASN:H	1.62	0.47
1:B:447:ILE:HB	1:B:448:PRO:HD2	1.95	0.47
1:A:250:GLY:HA2	4:A:705:IOD:I	2.84	0.47
1:A:53:LEU:HD12	1:A:488:THR:HG23	1.97	0.47
1:B:250:GLY:HA2	4:B:705:IOD:I	2.85	0.47
1:A:519:ALA:HB2	1:A:571:ILE:HD11	1.97	0.47
1:B:507:ASP:OD1	5:B:716:GOL:O2	2.25	0.47
1:B:420:GLN:HA	1:B:423:VAL:HG12	1.97	0.47
1:B:273:LEU:C	1:B:273:LEU:HD23	2.35	0.46
1:A:449:LEU:C	1:A:451:LYS:N	2.68	0.46
1:B:529:GLN:NE2	1:B:533:ARG:HE	2.13	0.46
1:A:444:THR:HG22	7:A:879:HOH:O	2.16	0.46
1:B:529:GLN:HE22	1:B:533:ARG:HH21	1.62	0.46
1:B:529:GLN:HE21	1:B:533:ARG:HE	1.63	0.46
1:A:450:LYS:HD2	1:A:452:LEU:HD13	1.98	0.46
1:B:4:THR:O	1:B:8:GLN:HG3	2.16	0.45
1:B:5:LYS:HA	1:B:8:GLN:NE2	2.30	0.45
1:A:481:SER:O	1:A:485:VAL:HG23	2.16	0.45
1:B:420:GLN:O	1:B:424:GLU:HB2	2.16	0.45
1:B:267:LYS:NZ	1:B:271:GLU:OE1	2.49	0.44

Continued on next page...

Continued from previous page...

Atom-1	Atom-2	Interatomic distance (Å)	Clash overlap (Å)
1:B:6:ARG:HD2	1:B:554:ALA:O	2.17	0.44
1:A:305:VAL:O	1:A:308:SER:OG	2.35	0.44
1:A:416:LEU:N	1:A:416:LEU:CD1	2.79	0.44
1:A:535:ILE:O	1:A:539:LEU:HG	2.18	0.44
1:A:5:LYS:CB	4:A:709:IOD:I	3.36	0.44
1:A:361:ARG:HD2	1:A:363:PHE:CZ	2.52	0.44
1:B:286:ALA:HA	1:B:289:GLN:NE2	2.29	0.44
1:A:146:VAL:O	1:A:146:VAL:HG12	2.18	0.44
1:B:207:GLY:O	1:B:246:ASN:HA	2.17	0.43
1:A:140:GLY:H	1:A:158:HIS:CE1	2.35	0.43
1:A:140:GLY:O	1:A:149:ARG:NH1	2.47	0.43
1:A:469:GLU:CD	1:A:469:GLU:H	2.22	0.43
1:A:180:VAL:HG11	1:A:258:SER:HB2	2.00	0.43
1:A:453:PHE:HB3	1:A:456:ILE:HG23	2.00	0.43
1:B:225:THR:H	1:B:228:GLN:HE21	1.65	0.43
1:B:337:THR:HG21	1:B:479:GLU:OE1	2.18	0.43
1:A:278:HIS:O	1:A:281:VAL:HG22	2.19	0.43
1:A:531:LYS:HE2	4:A:711:IOD:I	2.88	0.43
1:A:391:ASP:O	1:A:395:SER:OG	2.32	0.43
1:B:72:GLN:HG2	1:B:78:SER:OG	2.19	0.43
1:A:345:ASP:OD1	1:A:487:ASN:ND2	2.52	0.42
1:A:387:PHE:HD2	1:A:396:ILE:CD1	2.32	0.42
1:B:555:ALA:HB1	1:B:556:PRO:HD2	2.02	0.42
1:A:579:LEU:CD1	1:A:605:LEU:HD13	2.48	0.42
1:B:420:GLN:O	1:B:421:THR:C	2.58	0.42
1:B:344:MET:O	1:B:345:ASP:C	2.57	0.42
1:B:343:ILE:HD13	1:B:385:PHE:HB2	2.01	0.42
1:A:273:LEU:HD23	1:A:273:LEU:C	2.39	0.42
1:A:446:PRO:O	1:A:447:ILE:HB	2.20	0.42
1:B:322:THR:HG22	1:B:326:LYS:HE2	2.01	0.42
1:B:193:CYS:HA	4:B:714:IOD:I	2.90	0.42
1:A:228:GLN:HE22	1:B:228:GLN:NE2	2.18	0.41
1:A:45:ASP:OD1	1:A:45:ASP:C	2.59	0.41
1:B:447:ILE:O	1:B:448:PRO:O	2.39	0.41
1:B:521:ALA:HB1	2:B:701:MG9:C15	2.51	0.41
1:B:225:THR:HG22	1:B:228:GLN:H	1.86	0.41
1:B:216:ASN:OD1	1:B:225:THR:CG2	2.53	0.41
1:B:309:GLN:HA	1:B:309:GLN:HE21	1.85	0.41
1:B:48:ASN:ND2	1:B:51:ARG:HE	2.19	0.41
1:B:264:SER:HB3	1:B:480:LEU:HD11	2.01	0.41
1:A:332:LEU:HD12	1:A:407:VAL:HB	2.02	0.41

Continued on next page...

Continued from previous page...

Atom-1	Atom-2	Interatomic distance (Å)	Clash overlap (Å)
1:B:571:ILE:HB	1:B:572:PRO:HD3	2.03	0.41
1:B:401:THR:HG22	1:B:403:ILE:HG12	2.03	0.41
1:A:84:VAL:HG23	1:A:292:LEU:HD11	2.02	0.40
1:B:410:PHE:O	1:B:437:ALA:HA	2.21	0.40
1:A:102:VAL:HG11	1:A:134:TYR:CE1	2.56	0.40
1:A:137:LEU:HA	1:A:137:LEU:HD23	1.91	0.40
1:A:236:MET:HE2	1:A:242:ALA:HB2	2.03	0.40
1:B:124:LEU:C	1:B:124:LEU:HD23	2.41	0.40

There are no symmetry-related clashes.

5.3 Torsion angles

5.3.1 Protein backbone

In the following table, the Percentiles column shows the percent Ramachandran outliers of the chain as a percentile score with respect to all X-ray entries followed by that with respect to entries of similar resolution.

The Analysed column shows the number of residues for which the backbone conformation was analysed, and the total number of residues.

Mol	Chain	Analysed	Favoured	Allowed	Outliers	Percentiles	
1	A	579/636 (91%)	533 (92%)	34 (6%)	12 (2%)	8	4
1	B	584/636 (92%)	564 (97%)	17 (3%)	3 (0%)	32	34
All	All	1163/1272 (91%)	1097 (94%)	51 (4%)	15 (1%)	14	10

All (15) Ramachandran outliers are listed below:

Mol	Chain	Res	Type
1	A	415	ASN
1	A	456	ILE
1	B	448	PRO
1	A	336	GLN
1	A	452	LEU
1	A	462	PRO
1	B	415	ASN
1	A	327	LYS
1	A	168	ALA
1	A	260	MET

Continued on next page...

Continued from previous page...

Mol	Chain	Res	Type
1	A	326	LYS
1	A	450	LYS
1	A	447	ILE
1	A	451	LYS
1	B	127	GLY

5.3.2 Protein sidechains ⓘ

In the following table, the Percentiles column shows the percent sidechain outliers of the chain as a percentile score with respect to all X-ray entries followed by that with respect to entries of similar resolution.

The Analysed column shows the number of residues for which the sidechain conformation was analysed, and the total number of residues.

Mol	Chain	Analysed	Rotameric	Outliers	Percentiles	
1	A	498/542 (92%)	456 (92%)	42 (8%)	13	11
1	B	501/542 (92%)	475 (95%)	26 (5%)	27	31
All	All	999/1084 (92%)	931 (93%)	68 (7%)	18	19

All (68) residues with a non-rotameric sidechain are listed below:

Mol	Chain	Res	Type
1	A	5	LYS
1	A	6	ARG
1	A	25	GLU
1	A	35	ASN
1	A	131	LYS
1	A	143	ARG
1	A	166	VAL
1	A	170	LYS
1	A	172	ARG
1	A	198	THR
1	A	226	PHE
1	A	227	ARG
1	A	246	ASN
1	A	273	LEU
1	A	279	LYS
1	A	285	ILE
1	A	316	LEU
1	A	322	THR

Continued on next page...

Continued from previous page...

Mol	Chain	Res	Type
1	A	327	LYS
1	A	332	LEU
1	A	357	PHE
1	A	361	ARG
1	A	395	SER
1	A	400	LEU
1	A	415	ASN
1	A	416	LEU
1	A	420	GLN
1	A	427	LYS
1	A	431	ASN
1	A	436	LEU
1	A	444	THR
1	A	445	LEU
1	A	449	LEU
1	A	456	ILE
1	A	458	SER
1	A	460	THR
1	A	463	LEU
1	A	473	ILE
1	A	503	ASN
1	A	512	ASN
1	A	531	LYS
1	A	605	LEU
1	B	6	ARG
1	B	47	GLU
1	B	69	SER
1	B	72	GLN
1	B	84	VAL
1	B	143	ARG
1	B	166	VAL
1	B	171	LYS
1	B	225	THR
1	B	227	ARG
1	B	246	ASN
1	B	285	ILE
1	B	304	GLN
1	B	337	THR
1	B	357	PHE
1	B	402	GLU
1	B	413	ASP
1	B	415	ASN

Continued on next page...

Continued from previous page...

Mol	Chain	Res	Type
1	B	434	GLN
1	B	445	LEU
1	B	447	ILE
1	B	451	LYS
1	B	455	SER
1	B	471	ASN
1	B	503	ASN
1	B	562	GLN

Some sidechains can be flipped to improve hydrogen bonding and reduce clashes. All (36) such sidechains are listed below:

Mol	Chain	Res	Type
1	A	9	HIS
1	A	35	ASN
1	A	55	GLN
1	A	91	GLN
1	A	123	GLN
1	A	130	GLN
1	A	158	HIS
1	A	190	GLN
1	A	196	ASN
1	A	246	ASN
1	A	309	GLN
1	A	329	HIS
1	A	336	GLN
1	A	415	ASN
1	A	503	ASN
1	A	512	ASN
1	A	529	GLN
1	B	8	GLN
1	B	39	GLN
1	B	48	ASN
1	B	196	ASN
1	B	197	ASN
1	B	228	GLN
1	B	246	ASN
1	B	289	GLN
1	B	309	GLN
1	B	381	GLN
1	B	384	GLN
1	B	389	GLN
1	B	415	ASN

Continued on next page...

Continued from previous page...

Mol	Chain	Res	Type
1	B	425	GLN
1	B	431	ASN
1	B	434	GLN
1	B	471	ASN
1	B	503	ASN
1	B	529	GLN

5.3.3 RNA ⓘ

There are no RNA molecules in this entry.

5.4 Non-standard residues in protein, DNA, RNA chains ⓘ

There are no non-standard protein/DNA/RNA residues in this entry.

5.5 Carbohydrates ⓘ

There are no carbohydrates in this entry.

5.6 Ligand geometry ⓘ

Of 33 ligands modelled in this entry, 25 are monoatomic - leaving 8 for Mogul analysis.

In the following table, the Counts columns list the number of bonds (or angles) for which Mogul statistics could be retrieved, the number of bonds (or angles) that are observed in the model and the number of bonds (or angles) that are defined in the chemical component dictionary. The Link column lists molecule types, if any, to which the group is linked. The Z score for a bond length (or angle) is the number of standard deviations the observed value is removed from the expected value. A bond length (or angle) with $|Z| > 2$ is considered an outlier worth inspection. RMSZ is the root-mean-square of all Z scores of the bond lengths (or angles).

Mol	Type	Chain	Res	Link	Bond lengths			Bond angles		
					Counts	RMSZ	$\# Z > 2$	Counts	RMSZ	$\# Z > 2$
2	MG9	A	701	-	36,37,37	1.59	6 (16%)	52,58,58	1.63	8 (15%)
3	S6P	A	702	-	15,15,15	1.19	1 (6%)	20,21,21	1.49	3 (15%)
2	MG9	B	701	-	36,37,37	1.65	6 (16%)	52,58,58	1.93	7 (13%)
3	S6P	B	702	-	15,15,15	1.29	1 (6%)	20,21,21	1.16	1 (5%)
5	GOL	B	716	-	5,5,5	0.42	0	5,5,5	0.68	0
6	SO4	B	717	-	4,4,4	0.84	0	6,6,6	0.74	0
6	SO4	B	718	-	4,4,4	0.46	0	6,6,6	0.58	0

Mol	Type	Chain	Res	Link	Bond lengths			Bond angles		
					Counts	RMSZ	# Z > 2	Counts	RMSZ	# Z > 2
6	SO4	B	719	-	4,4,4	0.30	0	6,6,6	0.72	0

In the following table, the Chirals column lists the number of chiral outliers, the number of chiral centers analysed, the number of these observed in the model and the number defined in the chemical component dictionary. Similar counts are reported in the Torsion and Rings columns. '-' means no outliers of that kind were identified.

Mol	Type	Chain	Res	Link	Chirals	Torsions	Rings
2	MG9	A	701	-	-	0/40/56/56	0/3/3/3
3	S6P	A	702	-	-	0/20/20/20	0/0/0/0
2	MG9	B	701	-	-	0/40/56/56	0/3/3/3
3	S6P	B	702	-	-	0/20/20/20	0/0/0/0
5	GOL	B	716	-	-	0/4/4/4	0/0/0/0
6	SO4	B	717	-	-	0/0/0/0	0/0/0/0
6	SO4	B	718	-	-	0/0/0/0	0/0/0/0
6	SO4	B	719	-	-	0/0/0/0	0/0/0/0

All (14) bond length outliers are listed below:

Mol	Chain	Res	Type	Atoms	Z	Observed(Å)	Ideal(Å)
3	B	702	S6P	C2-C3	-3.45	1.46	1.53
2	A	701	MG9	C9-S1	-2.98	1.72	1.76
2	B	701	MG9	C4-N2	-2.64	1.45	1.47
2	B	701	MG9	C2-C6	-2.30	1.46	1.48
2	B	701	MG9	C3-N2	-2.06	1.45	1.47
3	A	702	S6P	O5-C5	2.32	1.48	1.43
2	B	701	MG9	C8-C7	2.34	1.51	1.47
2	A	701	MG9	C2-N1	2.37	1.49	1.46
2	B	701	MG9	C10-C9	2.94	1.41	1.38
2	A	701	MG9	C10-C9	3.01	1.41	1.38
2	A	701	MG9	C3-C2	3.38	1.57	1.53
2	A	701	MG9	O2-S1	4.07	1.48	1.43
2	A	701	MG9	O1-S1	5.10	1.49	1.43
2	B	701	MG9	O1-S1	6.68	1.51	1.43

All (19) bond angle outliers are listed below:

Mol	Chain	Res	Type	Atoms	Z	Observed(°)	Ideal(°)
2	B	701	MG9	C4-N2-C3	-8.52	105.43	112.69
2	B	701	MG9	C4-N2-S1	-4.90	107.81	117.06
2	A	701	MG9	C4-N2-S1	-4.53	108.52	117.06
2	B	701	MG9	O2-S1-C9	-4.38	102.29	108.00

Continued on next page...

Continued from previous page...

Mol	Chain	Res	Type	Atoms	Z	Observed(°)	Ideal(°)
2	A	701	MG9	O2-S1-O1	-3.75	113.15	119.46
2	A	701	MG9	C3-N2-S1	-3.74	110.23	117.22
2	A	701	MG9	C4-N2-C3	-3.49	109.72	112.69
3	A	702	S6P	C5-C4-C3	-3.24	107.24	112.46
2	B	701	MG9	C3-N2-S1	-2.79	111.99	117.22
3	A	702	S6P	O2P-P-O3P	-2.78	99.62	110.50
3	B	702	S6P	C1-C2-C3	-2.58	106.66	112.41
2	A	701	MG9	F5-C20-C19	-2.02	108.01	111.87
2	B	701	MG9	C1-C4-N2	2.18	110.65	108.94
2	B	701	MG9	C9-S1-N2	2.33	110.14	107.31
3	A	702	S6P	O2P-P-O6	2.47	113.31	106.73
2	A	701	MG9	C1-N1-C2	3.18	119.79	110.91
2	A	701	MG9	C4-C1-N1	3.22	115.90	110.66
2	A	701	MG9	O1-S1-N2	3.71	110.19	106.69
2	B	701	MG9	O1-S1-C9	3.79	112.94	108.00

There are no chirality outliers.

There are no torsion outliers.

There are no ring outliers.

2 monomers are involved in 3 short contacts:

Mol	Chain	Res	Type	Clashes	Symm-Clashes
2	B	701	MG9	1	0
5	B	716	GOL	2	0

5.7 Other polymers [i](#)

There are no such residues in this entry.

5.8 Polymer linkage issues [i](#)

There are no chain breaks in this entry.

6 Fit of model and data

6.1 Protein, DNA and RNA chains

In the following table, the column labelled ‘#RSRZ> 2’ contains the number (and percentage) of RSRZ outliers, followed by percent RSRZ outliers for the chain as percentile scores relative to all X-ray entries and entries of similar resolution. The OWAB column contains the minimum, median, 95th percentile and maximum values of the occupancy-weighted average B-factor per residue. The column labelled ‘Q< 0.9’ lists the number of (and percentage) of residues with an average occupancy less than 0.9.

Mol	Chain	Analysed	<RSRZ>	#RSRZ>2	OWAB(Å ²)	Q<0.9
1	A	585/636 (91%)	0.00	26 (4%) 35 33	25, 46, 78, 111	0
1	B	590/636 (92%)	-0.13	19 (3%) 48 46	21, 40, 63, 112	0
All	All	1175/1272 (92%)	-0.07	45 (3%) 41 39	21, 42, 73, 112	0

All (45) RSRZ outliers are listed below:

Mol	Chain	Res	Type	RSRZ
1	A	465	PHE	6.3
1	A	449	LEU	6.1
1	B	1	MET	5.1
1	B	2	PRO	4.2
1	A	466	PHE	4.1
1	B	448	PRO	4.0
1	A	469	GLU	3.5
1	B	69	SER	3.4
1	B	65	GLY	3.2
1	B	66	GLN	3.1
1	A	441	VAL	3.1
1	A	1	MET	3.0
1	A	387	PHE	3.0
1	B	381	GLN	2.9
1	B	463	LEU	2.9
1	A	428	GLU	2.8
1	A	470	GLY	2.8
1	B	454	PRO	2.8
1	B	180	VAL	2.7
1	A	69	SER	2.5
1	B	447	ILE	2.5
1	A	180	VAL	2.4
1	A	258	SER	2.4
1	B	131	LYS	2.3

Continued on next page...

Continued from previous page...

Mol	Chain	Res	Type	RSRZ
1	A	357	PHE	2.3
1	B	260	MET	2.2
1	B	21	LEU	2.2
1	A	448	PRO	2.2
1	A	451	LYS	2.2
1	A	109	THR	2.2
1	A	605	LEU	2.2
1	A	263	GLY	2.2
1	A	282	ASP	2.2
1	A	430	THR	2.2
1	B	256	GLY	2.2
1	B	97	PRO	2.1
1	A	454	PRO	2.1
1	A	498	GLY	2.1
1	B	265	ALA	2.1
1	A	264	SER	2.1
1	B	264	SER	2.1
1	A	268	ILE	2.1
1	A	386	THR	2.1
1	A	260	MET	2.0
1	B	444	THR	2.0

6.2 Non-standard residues in protein, DNA, RNA chains [i](#)

There are no non-standard protein/DNA/RNA residues in this entry.

6.3 Carbohydrates [i](#)

There are no carbohydrates in this entry.

6.4 Ligands [i](#)

In the following table, the Atoms column lists the number of modelled atoms in the group and the number defined in the chemical component dictionary. LLDF column lists the quality of electron density of the group with respect to its neighbouring residues in protein, DNA or RNA chains. The B-factors column lists the minimum, median, 95th percentile and maximum values of B factors of atoms in the group. The column labelled 'Q< 0.9' lists the number of atoms with occupancy less than 0.9.

Mol	Type	Chain	Res	Atoms	RSCC	RSR	LLDF	B-factors(Å ²)	Q<0.9
3	S6P	A	702	16/16	0.99	0.19	0.11	23,29,32,33	0

Continued on next page...

Continued from previous page...

Mol	Type	Chain	Res	Atoms	RSCC	RSR	LLDF	B-factors(Å ²)	Q<0.9
3	S6P	B	702	16/16	0.99	0.20	0.04	21,22,26,29	0
5	GOL	B	716	6/6	0.94	0.11	-0.10	43,50,54,55	0
2	MG9	B	701	35/35	0.97	0.12	-0.40	23,28,32,37	0
2	MG9	A	701	35/35	0.97	0.10	-0.53	21,30,38,40	0
4	IOD	B	703	1/1	0.97	0.09	-0.96	44,44,44,44	0
4	IOD	B	710	1/1	0.99	0.10	-1.26	84,84,84,84	1
4	IOD	A	714	1/1	0.97	0.06	-1.29	66,66,66,66	1
4	IOD	B	713	1/1	0.87	0.05	-1.45	71,71,71,71	1
4	IOD	A	709	1/1	0.98	0.09	-1.57	78,78,78,78	1
4	IOD	A	703	1/1	0.93	0.05	-1.59	68,68,68,68	0
4	IOD	B	704	1/1	0.99	0.06	-2.01	47,47,47,47	0
4	IOD	A	704	1/1	0.99	0.06	-2.30	55,55,55,55	0
4	IOD	A	707	1/1	0.94	0.06	-2.59	59,59,59,59	1
4	IOD	B	715	1/1	0.89	0.06	-3.18	79,79,79,79	1
4	IOD	A	706	1/1	0.97	0.04	-	77,77,77,77	0
4	IOD	B	706	1/1	0.99	0.07	-	50,50,50,50	0
6	SO4	B	718	5/5	0.95	0.26	-	58,60,65,83	0
4	IOD	A	712	1/1	0.94	0.08	-	75,75,75,75	1
6	SO4	B	719	5/5	0.98	0.12	-	31,32,35,37	5
4	IOD	B	709	1/1	0.94	0.05	-	79,79,79,79	1
4	IOD	B	714	1/1	0.93	0.05	-	71,71,71,71	1
4	IOD	B	711	1/1	0.98	0.05	-	81,81,81,81	1
4	IOD	B	708	1/1	0.97	0.04	-	59,59,59,59	1
4	IOD	A	708	1/1	0.95	0.04	-	83,83,83,83	1
4	IOD	B	707	1/1	0.98	0.04	-	64,64,64,64	0
6	SO4	B	717	5/5	0.77	0.21	-	62,63,74,90	0
4	IOD	A	705	1/1	0.99	0.03	-	52,52,52,52	1
4	IOD	A	711	1/1	0.97	0.06	-	51,51,51,51	1
4	IOD	A	713	1/1	0.96	0.04	-	64,64,64,64	1
4	IOD	B	705	1/1	0.99	0.04	-	53,53,53,53	0
4	IOD	A	710	1/1	0.89	0.15	-	97,97,97,97	1
4	IOD	B	712	1/1	0.97	0.06	-	48,48,48,48	1

6.5 Other polymers [i](#)

There are no such residues in this entry.