



Full wwPDB X-ray Structure Validation Report ⓘ

Oct 1, 2017 – 10:12 PM EDT

PDB ID : 1MRU
Title : Intracellular Ser/Thr protein kinase domain of Mycobacterium tuberculosis PknB.
Authors : Young, T.A.; Delagoutte, B.; Endrizzi, J.A.; Alber, T.; TB Structural Genomics Consortium (TBSGC)
Deposited on : unknown
Resolution : 3.00 Å(reported)

This is a Full wwPDB X-ray Structure Validation Report for a publicly released PDB entry.

We welcome your comments at validation@mail.wwpdb.org

A user guide is available at

<http://wwpdb.org/validation/2016/XrayValidationReportHelp>

with specific help available everywhere you see the ⓘ symbol.

The following versions of software and data (see [references ⓘ](#)) were used in the production of this report:

MolProbity : 4.02b-467
Mogul : 1.7.2 (RC1), CSD as538be (2017)
Xtriage (Phenix) : 1.9-1692
EDS : rb-20030345
Percentile statistics : 20161228.v01 (using entries in the PDB archive December 28th 2016)
Refmac : 5.8.0135
CCP4 : 6.5.0
Ideal geometry (proteins) : Engh & Huber (2001)
Ideal geometry (DNA, RNA) : Parkinson et al. (1996)
Validation Pipeline (wwPDB-VP) : rb-20030345

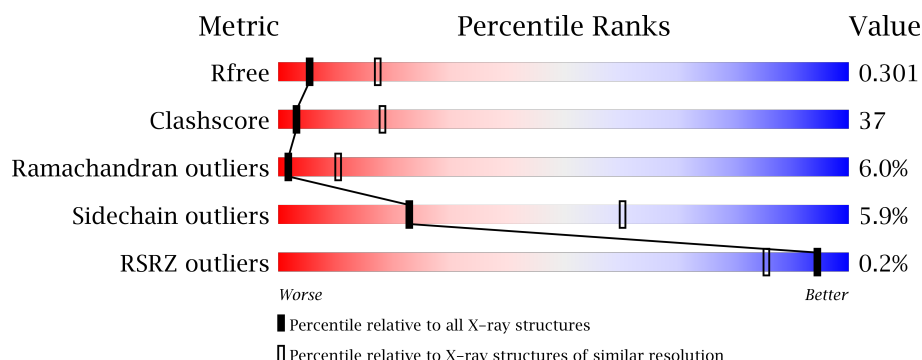
1 Overall quality at a glance

The following experimental techniques were used to determine the structure:

X-RAY DIFFRACTION

The reported resolution of this entry is 3.00 Å.

Percentile scores (ranging between 0-100) for global validation metrics of the entry are shown in the following graphic. The table shows the number of entries on which the scores are based.



Metric	Whole archive (#Entries)	Similar resolution (#Entries, resolution range(Å))
R_{free}	100719	1692 (3.00-3.00)
Clashscore	112137	2037 (3.00-3.00)
Ramachandran outliers	110173	1973 (3.00-3.00)
Sidechain outliers	110143	1976 (3.00-3.00)
RSRZ outliers	101464	1716 (3.00-3.00)

The table below summarises the geometric issues observed across the polymeric chains and their fit to the electron density. The red, orange, yellow and green segments on the lower bar indicate the fraction of residues that contain outliers for ≥ 3 , 2, 1 and 0 types of geometric quality criteria. A grey segment represents the fraction of residues that are not modelled. The numeric value for each fraction is indicated below the corresponding segment, with a dot representing fractions $\leq 5\%$. The upper red bar (where present) indicates the fraction of residues that have poor fit to the electron density. The numeric value is given above the bar.

Mol	Chain	Length	Quality of chain
1	A	311	
1	B	311	

2 Entry composition

There are 3 unique types of molecules in this entry. The entry contains 4217 atoms, of which 0 are hydrogens and 0 are deuteriums.

In the tables below, the ZeroOcc column contains the number of atoms modelled with zero occupancy, the AltConf column contains the number of residues with at least one atom in alternate conformation and the Trace column contains the number of residues modelled with at most 2 atoms.

- Molecule 1 is a protein called Probable serine/threonine-protein kinase pknB.

Mol	Chain	Residues	Atoms					ZeroOcc	AltConf	Trace
1	A	269	Total	C	N	O	S	0	0	0
			2068	1294	372	394	8			
1	B	271	Total	C	N	O	S	0	0	0
			2083	1303	374	397	9			

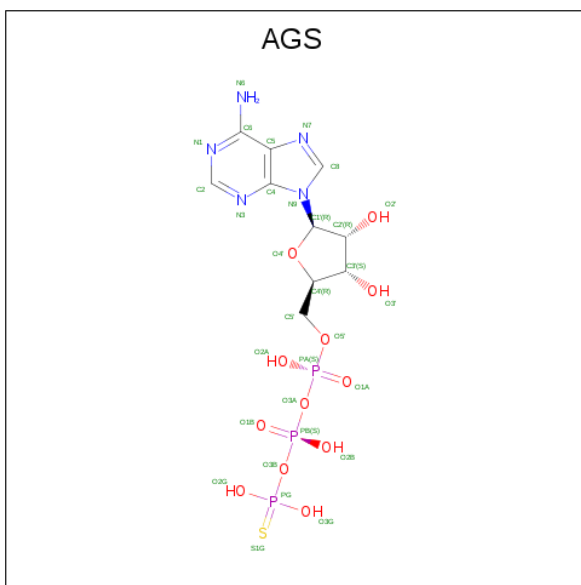
There are 6 discrepancies between the modelled and reference sequences:

Chain	Residue	Modelled	Actual	Comment	Reference
A	-2	GLY	-	CLONING ARTIFACT	UNP P0A5S4
A	-1	SER	-	CLONING ARTIFACT	UNP P0A5S4
A	0	HIS	-	CLONING ARTIFACT	UNP P0A5S4
B	-2	GLY	-	CLONING ARTIFACT	UNP P0A5S4
B	-1	SER	-	CLONING ARTIFACT	UNP P0A5S4
B	0	HIS	-	CLONING ARTIFACT	UNP P0A5S4

- Molecule 2 is MAGNESIUM ION (three-letter code: MG) (formula: Mg).

Mol	Chain	Residues	Atoms		ZeroOcc	AltConf
2	B	2	Total	Mg	0	0
			2	2		
2	A	2	Total	Mg	0	0
			2	2		

- Molecule 3 is PHOSPHOTHIOPHOSPHORIC ACID-ADENYLATE ESTER (three-letter code: AGS) (formula: C₁₀H₁₆N₅O₁₂P₃S).

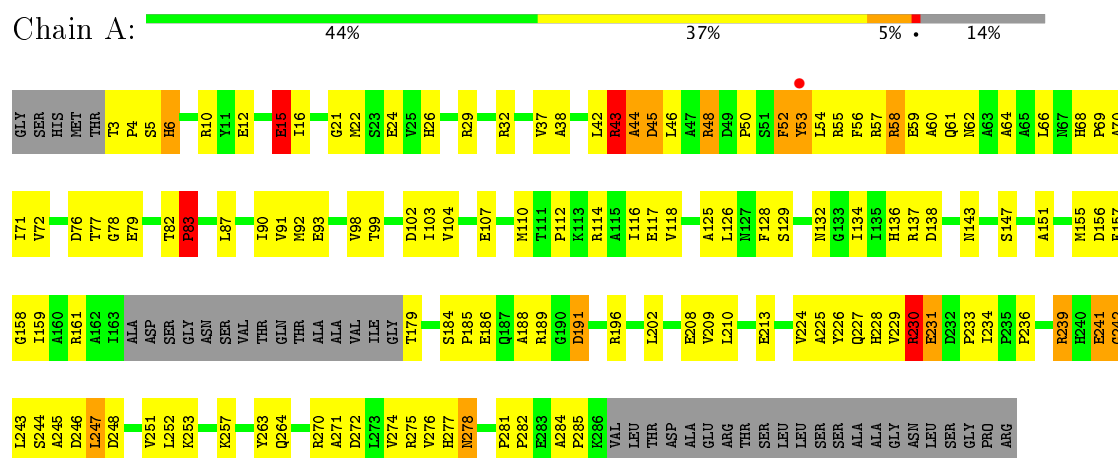


Mol	Chain	Residues	Atoms						ZeroOcc	AltConf
3	A	1	Total 31	C 10	N 5	O 12	P 3	S 1	0	0
3	B	1	Total 31	C 10	N 5	O 12	P 3	S 1	0	0

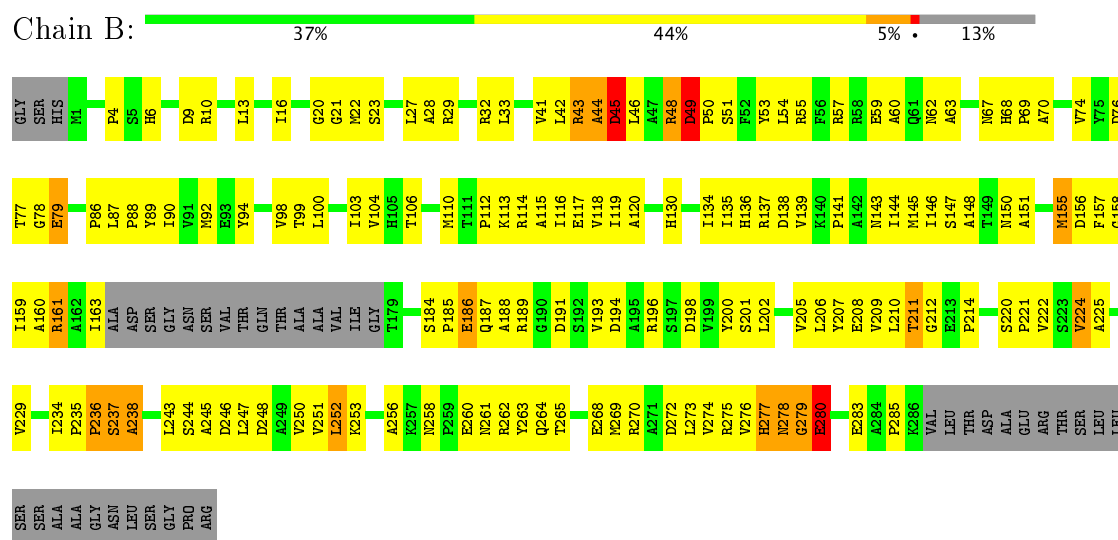
3 Residue-property plots

These plots are drawn for all protein, RNA and DNA chains in the entry. The first graphic for a chain summarises the proportions of the various outlier classes displayed in the second graphic. The second graphic shows the sequence view annotated by issues in geometry and electron density. Residues are color-coded according to the number of geometric quality criteria for which they contain at least one outlier: green = 0, yellow = 1, orange = 2 and red = 3 or more. A red dot above a residue indicates a poor fit to the electron density ($RSRZ > 2$). Stretches of 2 or more consecutive residues without any outlier are shown as a green connector. Residues present in the sample, but not in the model, are shown in grey.

- Molecule 1: Probable serine/threonine-protein kinase pknB



- Molecule 1: Probable serine/threonine-protein kinase pknB



4 Data and refinement statistics

Property	Value	Source
Space group	P 1 21 1	Depositor
Cell constants a, b, c, α , β , γ	63.10Å 50.17Å 111.07Å 90.00° 96.19° 90.00°	Depositor
Resolution (Å)	29.68 – 3.00 110.42 – 2.99	Depositor EDS
% Data completeness (in resolution range)	98.2 (29.68-3.00) 97.4 (110.42-2.99)	Depositor EDS
R_{merge}	(Not available)	Depositor
R_{sym}	(Not available)	Depositor
$\langle I/\sigma(I) \rangle$ ¹	6.46 (at 3.01Å)	Xtriage
Refinement program	ELVES, CNS 1.0	Depositor
R, R_{free}	0.232 , 0.297 0.228 , 0.301	Depositor DCC
R_{free} test set	677 reflections (5.12%)	DCC
Wilson B-factor (Å ²)	69.6	Xtriage
Anisotropy	0.040	Xtriage
Bulk solvent k_{sol} (e/Å ³), B_{sol} (Å ²)	0.32 , 45.6	EDS
L-test for twinning ²	$\langle L \rangle = 0.49$, $\langle L^2 \rangle = 0.33$	Xtriage
Estimated twinning fraction	No twinning to report.	Xtriage
F_o, F_c correlation	0.92	EDS
Total number of atoms	4217	wwPDB-VP
Average B, all atoms (Å ²)	54.0	wwPDB-VP

Xtriage's analysis on translational NCS is as follows: *The largest off-origin peak in the Patterson function is 5.63% of the height of the origin peak. No significant pseudotranslation is detected.*

¹Intensities estimated from amplitudes.

²Theoretical values of $\langle |L| \rangle$, $\langle L^2 \rangle$ for acentric reflections are 0.5, 0.333 respectively for untwinned datasets, and 0.375, 0.2 for perfectly twinned datasets.

5 Model quality [i](#)

5.1 Standard geometry [i](#)

Bond lengths and bond angles in the following residue types are not validated in this section: MG, AGS

The Z score for a bond length (or angle) is the number of standard deviations the observed value is removed from the expected value. A bond length (or angle) with $|Z| > 5$ is considered an outlier worth inspection. RMSZ is the root-mean-square of all Z scores of the bond lengths (or angles).

Mol	Chain	Bond lengths		Bond angles	
		RMSZ	$\# Z > 5$	RMSZ	$\# Z > 5$
1	A	0.48	0/2112	0.70	1/2876 (0.0%)
1	B	0.48	0/2127	0.75	3/2896 (0.1%)
All	All	0.48	0/4239	0.73	4/5772 (0.1%)

There are no bond length outliers.

All (4) bond angle outliers are listed below:

Mol	Chain	Res	Type	Atoms	Z	Observed(°)	Ideal(°)
1	B	155	MET	N-CA-C	6.36	128.16	111.00
1	A	155	MET	N-CA-C	6.08	127.42	111.00
1	B	49	ASP	N-CA-C	5.91	126.94	111.00
1	B	237	SER	N-CA-C	-5.24	96.84	111.00

There are no chirality outliers.

There are no planarity outliers.

5.2 Too-close contacts [i](#)

In the following table, the Non-H and H(model) columns list the number of non-hydrogen atoms and hydrogen atoms in the chain respectively. The H(added) column lists the number of hydrogen atoms added and optimized by MolProbity. The Clashes column lists the number of clashes within the asymmetric unit, whereas Symm-Clashes lists symmetry related clashes.

Mol	Chain	Non-H	H(model)	H(added)	Clashes	Symm-Clashes
1	A	2068	0	2036	155	0
1	B	2083	0	2055	153	0
2	A	2	0	0	0	0
2	B	2	0	0	0	0
3	A	31	0	12	0	0

Continued on next page...

Continued from previous page...

Mol	Chain	Non-H	H(model)	H(added)	Clashes	Symm-Clashes
3	B	31	0	12	1	0
All	All	4217	0	4115	305	0

The all-atom clashscore is defined as the number of clashes found per 1000 atoms (including hydrogen atoms). The all-atom clashscore for this structure is 37.

All (305) close contacts within the same asymmetric unit are listed below, sorted by their clash magnitude.

Atom-1	Atom-2	Interatomic distance (Å)	Clash overlap (Å)
1:A:43:ARG:HD3	1:A:46:LEU:HB3	1.17	1.11
1:B:43:ARG:HD3	1:B:46:LEU:HD13	1.38	1.03
1:B:45:ASP:HA	1:B:48:ARG:HB3	1.43	1.01
1:A:77:THR:HG22	1:A:78:GLY:H	1.28	0.97
1:A:43:ARG:HD3	1:A:46:LEU:CB	2.01	0.91
1:A:37:VAL:HG11	1:A:91:VAL:HG12	1.53	0.90
1:A:241:GLU:HG3	1:A:242:GLY:H	1.38	0.89
1:A:54:LEU:HB3	1:A:58:ARG:CZ	2.04	0.87
1:A:37:VAL:HG11	1:A:91:VAL:CG1	2.06	0.86
1:A:21:GLY:HA2	1:A:43:ARG:HH22	1.40	0.85
1:B:22:MET:O	1:B:43:ARG:HB2	1.77	0.84
1:A:42:LEU:HD23	1:A:48:ARG:HD3	1.60	0.84
1:B:189:ARG:HG2	1:B:189:ARG:HH11	1.43	0.83
1:B:235:PRO:O	1:B:238:ALA:HB2	1.78	0.82
1:A:43:ARG:CD	1:A:46:LEU:HB3	2.06	0.82
1:B:114:ARG:HH21	1:B:150:ASN:HD21	1.27	0.82
1:A:271:ALA:O	1:A:275:ARG:HG3	1.81	0.81
1:A:46:LEU:O	1:A:46:LEU:HD23	1.81	0.81
1:B:275:ARG:NH1	1:B:283:GLU:HG3	1.97	0.80
1:A:22:MET:O	1:A:43:ARG:HB2	1.82	0.80
1:B:135:ILE:HD13	1:B:194:ASP:HA	1.63	0.79
1:B:45:ASP:HA	1:B:48:ARG:CB	2.13	0.79
1:A:45:ASP:HA	1:A:48:ARG:HB3	1.64	0.79
1:A:21:GLY:C	1:A:43:ARG:HH12	1.86	0.78
1:A:186:GLU:O	1:A:191:ASP:HB2	1.84	0.77
1:A:98:VAL:HG13	1:A:102:ASP:HB2	1.67	0.76
1:A:22:MET:N	1:A:43:ARG:HH12	1.81	0.76
1:B:48:ARG:O	1:B:48:ARG:HD2	1.85	0.76
1:B:148:ALA:C	1:B:150:ASN:H	1.88	0.74
1:A:48:ARG:HG3	1:A:48:ARG:HH11	1.52	0.73
1:A:241:GLU:HG3	1:A:242:GLY:N	2.03	0.73
1:B:113:LYS:O	1:B:117:GLU:HG3	1.89	0.72

Continued on next page...

Continued from previous page...

Atom-1	Atom-2	Interatomic distance (Å)	Clash overlap (Å)
1:A:54:LEU:HB3	1:A:58:ARG:NH1	2.04	0.72
1:A:57:ARG:O	1:A:61:GLN:HG2	1.90	0.72
1:B:112:PRO:O	1:B:116:ILE:HG12	1.88	0.72
1:A:159:ILE:O	1:A:159:ILE:HG22	1.90	0.71
1:B:189:ARG:HD2	1:B:191:ASP:OD2	1.91	0.71
1:A:253:LYS:HG2	1:A:263:TYR:CE2	2.26	0.71
1:B:116:ILE:HD11	1:B:247:LEU:HD13	1.73	0.71
1:B:184:SER:HB2	1:B:186:GLU:OE1	1.90	0.70
1:A:136:HIS:HD2	1:A:138:ASP:H	1.39	0.70
1:A:68:HIS:HD2	1:A:70:ALA:H	1.40	0.70
1:B:43:ARG:HH11	1:B:46:LEU:HD22	1.56	0.69
1:B:44:ALA:HA	1:B:87:LEU:HD11	1.76	0.68
1:A:158:GLY:C	1:A:159:ILE:HD12	2.14	0.68
1:B:68:HIS:HD2	1:B:70:ALA:H	1.42	0.67
1:B:189:ARG:HG2	1:B:189:ARG:NH1	2.09	0.67
1:B:68:HIS:CD2	1:B:70:ALA:H	2.13	0.66
1:B:185:PRO:O	1:B:188:ALA:HB3	1.94	0.66
1:A:77:THR:HG22	1:A:78:GLY:N	2.08	0.66
1:A:68:HIS:CD2	1:A:70:ALA:H	2.13	0.66
1:B:6:HIS:HB3	1:B:9:ASP:HA	1.78	0.66
1:B:159:ILE:HG22	1:B:159:ILE:O	1.96	0.65
1:A:52:PHE:HD1	1:A:55:ARG:HD2	1.61	0.65
1:B:110:MET:HE2	1:B:115:ALA:HA	1.79	0.65
1:B:256:ALA:HB3	1:B:262:ARG:HG2	1.79	0.65
1:B:253:LYS:HD3	1:B:263:TYR:CE1	2.32	0.65
1:B:236:PRO:C	1:B:238:ALA:N	2.48	0.64
1:B:237:SER:HB3	1:B:243:LEU:HB2	1.79	0.64
1:A:54:LEU:HD13	1:A:58:ARG:NH2	2.13	0.64
1:A:112:PRO:O	1:A:116:ILE:HG13	1.97	0.64
1:A:4:PRO:O	1:A:6:HIS:N	2.23	0.64
1:B:118:VAL:HG23	1:B:119:ILE:N	2.12	0.64
1:A:10:ARG:CZ	1:A:32:ARG:HD2	2.29	0.63
1:B:48:ARG:HD3	1:B:88:PRO:HD3	1.79	0.63
1:A:103:ILE:HG23	1:A:107:GLU:OE1	1.98	0.63
1:B:158:GLY:O	1:B:159:ILE:HD13	1.99	0.63
1:B:224:VAL:HG12	1:B:225:ALA:N	2.14	0.63
1:A:147:SER:HB3	1:A:151:ALA:HB3	1.80	0.63
1:A:50:PRO:C	1:A:52:PHE:H	2.00	0.62
1:B:68:HIS:CD2	1:B:70:ALA:HB3	2.35	0.62
1:A:244:SER:C	1:A:246:ASP:H	2.03	0.62
1:A:43:ARG:CD	1:A:46:LEU:HD22	2.30	0.61

Continued on next page...

Continued from previous page...

Atom-1	Atom-2	Interatomic distance (Å)	Clash overlap (Å)
1:B:48:ARG:O	1:B:48:ARG:CD	2.49	0.61
1:A:48:ARG:HD2	1:A:48:ARG:O	2.01	0.60
1:B:234:ILE:HG22	1:B:238:ALA:HB1	1.83	0.60
1:B:116:ILE:O	1:B:120:ALA:HB2	2.01	0.60
1:B:113:LYS:HB3	1:B:113:LYS:NZ	2.17	0.60
1:B:43:ARG:HD2	1:B:46:LEU:HD22	1.84	0.60
1:A:42:LEU:HD23	1:A:48:ARG:CD	2.31	0.60
1:A:59:GLU:HG3	1:A:158:GLY:HA2	1.84	0.59
1:B:274:VAL:O	1:B:277:HIS:HB3	2.02	0.59
1:A:241:GLU:O	1:A:243:LEU:N	2.36	0.59
1:B:270:ARG:HA	1:B:273:LEU:HD12	1.84	0.59
1:B:246:ASP:HB3	1:B:276:VAL:HG22	1.85	0.59
1:B:136:HIS:HD2	1:B:138:ASP:H	1.51	0.59
1:A:44:ALA:HA	1:A:87:LEU:HD21	1.85	0.59
1:B:135:ILE:O	1:B:160:ALA:HA	2.02	0.59
1:A:129:SER:OG	1:A:134:ILE:HG22	2.02	0.58
1:A:104:VAL:HG12	1:A:104:VAL:O	2.03	0.58
1:A:159:ILE:CG2	1:A:159:ILE:O	2.51	0.58
1:A:21:GLY:C	1:A:43:ARG:NH1	2.57	0.58
1:A:43:ARG:HH11	1:A:43:ARG:HB2	1.68	0.58
1:B:21:GLY:O	1:B:43:ARG:NH2	2.33	0.58
1:B:208:GLU:OE2	1:B:214:PRO:HD3	2.04	0.58
1:A:228:HIS:O	1:A:257:LYS:NZ	2.37	0.57
1:A:236:PRO:HD2	1:A:248:ASP:CG	2.24	0.57
1:A:48:ARG:NH1	1:A:48:ARG:HG3	2.17	0.57
1:B:78:GLY:C	1:B:79:GLU:HG2	2.24	0.57
1:A:241:GLU:CG	1:A:242:GLY:N	2.60	0.57
1:B:148:ALA:C	1:B:150:ASN:N	2.57	0.57
1:A:229:VAL:HG13	1:A:229:VAL:O	2.04	0.57
1:A:54:LEU:O	1:A:58:ARG:HD3	2.03	0.57
1:B:100:LEU:HD12	1:B:144:ILE:HB	1.87	0.56
1:A:114:ARG:O	1:A:117:GLU:HB2	2.05	0.56
1:A:137:ARG:HH11	1:A:161:ARG:HG3	1.70	0.56
1:A:98:VAL:HG12	1:A:99:THR:O	2.05	0.56
1:B:235:PRO:HG3	1:B:252:LEU:HD21	1.87	0.56
1:A:282:PRO:C	1:A:284:ALA:H	2.09	0.56
1:B:48:ARG:HG3	1:B:49:ASP:OD1	2.05	0.56
1:A:244:SER:O	1:A:247:LEU:N	2.31	0.56
1:A:98:VAL:CG1	1:A:102:ASP:HB2	2.34	0.55
1:A:37:VAL:HG13	1:A:92:MET:O	2.05	0.55
1:B:48:ARG:HD3	1:B:88:PRO:CD	2.36	0.55

Continued on next page...

Continued from previous page...

Atom-1	Atom-2	Interatomic distance (Å)	Clash overlap (Å)
1:B:51:SER:O	1:B:55:ARG:HG2	2.06	0.55
1:B:68:HIS:HD2	1:B:70:ALA:HB3	1.70	0.55
1:B:23:SER:HB2	1:B:41:VAL:O	2.05	0.55
1:B:234:ILE:HG22	1:B:238:ALA:CB	2.37	0.55
1:B:20:GLY:HA3	3:B:440:AGS:O3B	2.06	0.55
1:A:58:ARG:O	1:A:62:ASN:HB2	2.06	0.55
1:B:135:ILE:HG22	1:B:137:ARG:HG2	1.89	0.55
1:B:60:ALA:HB2	1:B:90:ILE:CD1	2.36	0.55
1:A:72:VAL:HG13	1:A:93:GLU:HG2	1.87	0.55
1:B:234:ILE:CG2	1:B:238:ALA:HB1	2.36	0.55
1:B:27:LEU:HD13	1:B:94:TYR:CE1	2.41	0.55
1:A:10:ARG:NE	1:A:32:ARG:HD2	2.22	0.55
1:A:210:LEU:HD22	1:A:243:LEU:HD21	1.87	0.54
1:B:141:PRO:HD3	1:B:205:VAL:HG22	1.89	0.54
1:B:224:VAL:CG1	1:B:225:ALA:N	2.70	0.54
1:A:189:ARG:HD2	1:A:191:ASP:OD2	2.07	0.54
1:A:10:ARG:HD2	1:A:32:ARG:NE	2.22	0.54
1:B:146:ILE:N	1:B:146:ILE:HD12	2.23	0.54
1:B:237:SER:H	1:B:243:LEU:HD12	1.73	0.54
1:A:42:LEU:O	1:A:43:ARG:C	2.46	0.54
1:B:258:ASN:ND2	1:B:260:GLU:HB2	2.23	0.54
1:A:55:ARG:HG2	1:A:55:ARG:HH11	1.73	0.53
1:A:229:VAL:O	1:A:230:ARG:HB2	2.09	0.53
1:A:136:HIS:CE1	1:A:156:ASP:O	2.61	0.53
1:A:233:PRO:O	1:A:252:LEU:HD21	2.08	0.53
1:B:206:LEU:CD2	1:B:251:VAL:HG22	2.39	0.53
1:A:196:ARG:HD3	1:A:264:GLN:OE1	2.09	0.53
1:B:13:LEU:HD23	1:B:28:ALA:HB2	1.91	0.52
1:A:22:MET:O	1:A:43:ARG:CB	2.54	0.52
1:B:114:ARG:NH2	1:B:150:ASN:HD21	2.04	0.52
1:A:10:ARG:NH1	1:B:76:ASP:OD1	2.29	0.52
1:A:68:HIS:HD2	1:A:70:ALA:N	2.07	0.52
1:B:68:HIS:HD2	1:B:70:ALA:N	2.08	0.51
1:A:69:PRO:HG3	1:B:69:PRO:HB3	1.92	0.51
1:B:245:ALA:O	1:B:248:ASP:HB2	2.11	0.51
1:B:146:ILE:HA	1:B:151:ALA:O	2.10	0.51
1:A:128:PHE:O	1:A:132:ASN:ND2	2.44	0.51
1:A:244:SER:C	1:A:246:ASP:N	2.64	0.51
1:A:59:GLU:HG3	1:A:157:PHE:C	2.31	0.51
1:B:42:LEU:O	1:B:43:ARG:C	2.49	0.51
1:A:185:PRO:O	1:A:188:ALA:HB3	2.10	0.51

Continued on next page...

Continued from previous page...

Atom-1	Atom-2	Interatomic distance (Å)	Clash overlap (Å)
1:A:10:ARG:HD2	1:A:32:ARG:HE	1.76	0.51
1:B:275:ARG:NH1	1:B:283:GLU:CG	2.72	0.51
1:A:70:ALA:HB3	1:A:125:ALA:HB2	1.92	0.50
1:A:59:GLU:HG3	1:A:158:GLY:N	2.26	0.50
1:A:236:PRO:CB	1:A:243:LEU:HD13	2.42	0.50
1:A:53:TYR:CE2	1:A:54:LEU:HG	2.46	0.50
1:A:55:ARG:NH1	1:A:55:ARG:HG2	2.27	0.50
1:A:82:THR:HB	1:A:83:PRO:HD2	1.93	0.50
1:B:59:GLU:HG3	1:B:158:GLY:HA2	1.92	0.50
1:B:137:ARG:HD2	1:B:193:VAL:HG11	1.94	0.50
1:A:236:PRO:HB3	1:A:243:LEU:HD13	1.93	0.50
1:B:205:VAL:O	1:B:209:VAL:HG23	2.11	0.49
1:A:136:HIS:NE2	1:A:156:ASP:O	2.45	0.49
1:A:208:GLU:HG3	1:A:213:GLU:CA	2.42	0.49
1:B:98:VAL:HG23	1:B:103:ILE:HD11	1.93	0.49
1:B:136:HIS:O	1:B:198:ASP:OD1	2.30	0.49
1:A:58:ARG:HA	1:A:61:GLN:CG	2.42	0.49
1:A:229:VAL:HG22	1:A:229:VAL:O	2.11	0.49
1:A:37:VAL:CG1	1:A:92:MET:O	2.60	0.49
1:A:76:ASP:OD1	1:A:77:THR:O	2.31	0.49
1:A:79:GLU:HA	1:A:87:LEU:O	2.12	0.49
1:A:60:ALA:HB2	1:A:90:ILE:CD1	2.43	0.49
1:A:12:GLU:HB3	1:A:29:ARG:HB3	1.95	0.48
1:A:43:ARG:O	1:A:45:ASP:N	2.46	0.48
1:A:270:ARG:O	1:A:274:VAL:HG23	2.13	0.48
1:A:37:VAL:HG12	1:A:38:ALA:N	2.28	0.48
1:A:50:PRO:C	1:A:52:PHE:N	2.66	0.48
1:A:56:PHE:CE2	1:A:90:ILE:HG13	2.49	0.48
1:A:43:ARG:HD3	1:A:46:LEU:CG	2.43	0.48
1:B:147:SER:O	1:B:150:ASN:HA	2.14	0.48
1:A:77:THR:CG2	1:A:78:GLY:H	2.10	0.47
1:B:244:SER:O	1:B:247:LEU:HB3	2.14	0.47
1:B:48:ARG:NH2	1:B:86:PRO:HB2	2.29	0.47
1:B:158:GLY:C	1:B:159:ILE:HD13	2.35	0.47
1:B:29:ARG:HH11	1:B:29:ARG:HG3	1.79	0.47
1:A:66:LEU:HD13	1:A:71:ILE:HD13	1.96	0.47
1:B:43:ARG:CD	1:B:46:LEU:HD13	2.27	0.47
1:A:54:LEU:HB3	1:A:58:ARG:NE	2.29	0.47
1:B:196:ARG:HD3	1:B:264:GLN:OE1	2.15	0.47
1:A:244:SER:O	1:A:246:ASP:N	2.48	0.47
1:A:16:ILE:CD1	1:A:26:HIS:ND1	2.78	0.47

Continued on next page...

Continued from previous page...

Atom-1	Atom-2	Interatomic distance (Å)	Clash overlap (Å)
1:A:239:ARG:O	1:A:239:ARG:HD3	2.15	0.47
1:B:48:ARG:CZ	1:B:86:PRO:HB2	2.45	0.47
1:B:62:ASN:HB3	1:B:134:ILE:HD13	1.97	0.46
1:A:226:TYR:CZ	1:A:230:ARG:HG2	2.51	0.46
1:A:43:ARG:O	1:A:44:ALA:C	2.54	0.46
1:B:202:LEU:HA	1:B:202:LEU:HD12	1.74	0.46
1:B:48:ARG:NH1	1:B:53:TYR:CD1	2.83	0.46
1:A:43:ARG:CB	1:A:43:ARG:HH11	2.28	0.46
1:A:233:PRO:HB2	1:A:252:LEU:CD2	2.46	0.46
1:A:253:LYS:HG2	1:A:263:TYR:CZ	2.50	0.46
1:A:52:PHE:CD1	1:A:55:ARG:HD2	2.45	0.46
1:B:118:VAL:HG23	1:B:119:ILE:H	1.80	0.46
1:A:59:GLU:HG3	1:A:158:GLY:CA	2.43	0.46
1:A:233:PRO:O	1:A:234:ILE:C	2.54	0.46
1:B:110:MET:HE2	1:B:115:ALA:CA	2.45	0.46
1:B:194:ASP:OD1	1:B:196:ARG:NH2	2.44	0.46
1:A:147:SER:CB	1:A:151:ALA:HB3	2.46	0.46
1:B:57:ARG:NH2	1:B:79:GLU:OE2	2.49	0.46
1:A:48:ARG:CD	1:A:48:ARG:O	2.64	0.45
1:B:77:THR:HG23	1:B:89:TYR:O	2.16	0.45
1:B:224:VAL:HG12	1:B:225:ALA:H	1.78	0.45
1:A:143:ASN:OD1	1:A:156:ASP:HB2	2.16	0.45
1:B:279:GLY:O	1:B:280:GLU:O	2.34	0.45
1:B:49:ASP:HA	1:B:53:TYR:HD2	1.82	0.45
1:B:252:LEU:HD12	1:B:252:LEU:HA	1.85	0.45
1:B:48:ARG:O	1:B:48:ARG:CG	2.65	0.45
1:A:48:ARG:NH1	1:A:48:ARG:O	2.50	0.45
1:B:10:ARG:HD2	1:B:32:ARG:HD2	1.97	0.45
1:B:16:ILE:O	1:B:16:ILE:HG23	2.16	0.45
1:B:270:ARG:O	1:B:273:LEU:N	2.50	0.45
1:B:210:LEU:CD1	1:B:210:LEU:N	2.80	0.44
1:B:258:ASN:HB3	1:B:261:ASN:HD22	1.82	0.44
1:A:184:SER:O	1:A:185:PRO:C	2.55	0.44
1:B:112:PRO:O	1:B:116:ILE:CG1	2.60	0.44
1:B:78:GLY:O	1:B:79:GLU:HG2	2.18	0.44
1:A:277:HIS:O	1:A:278:ASN:O	2.36	0.44
1:B:225:ALA:O	1:B:229:VAL:HG23	2.17	0.44
1:B:263:TYR:CD2	1:B:269:MET:HG3	2.52	0.44
1:A:243:LEU:HD23	1:A:243:LEU:HA	1.77	0.44
1:A:54:LEU:C	1:A:58:ARG:HD3	2.37	0.44
1:B:236:PRO:C	1:B:238:ALA:H	2.18	0.44

Continued on next page...

Continued from previous page...

Atom-1	Atom-2	Interatomic distance (Å)	Clash overlap (Å)
1:A:179:THR:O	1:A:179:THR:HG22	2.18	0.44
1:A:76:ASP:OD1	1:A:77:THR:N	2.51	0.44
1:B:118:VAL:CG2	1:B:119:ILE:N	2.78	0.44
1:B:59:GLU:HG3	1:B:157:PHE:O	2.17	0.44
1:A:43:ARG:HD3	1:A:46:LEU:HD22	1.99	0.43
1:B:130:HIS:HE1	1:B:198:ASP:OD2	2.01	0.43
1:B:63:ALA:HB3	1:B:74:VAL:HG21	1.99	0.43
1:B:220:SER:HB2	1:B:221:PRO:HD2	2.00	0.43
1:B:265:THR:OG1	1:B:268:GLU:HB2	2.18	0.43
1:A:147:SER:HB3	1:A:151:ALA:H	1.83	0.43
1:A:126:LEU:HD12	1:A:202:LEU:CD1	2.48	0.43
1:B:48:ARG:NH1	1:B:53:TYR:CG	2.87	0.43
1:B:48:ARG:O	1:B:49:ASP:OD1	2.36	0.43
1:A:224:VAL:O	1:A:225:ALA:C	2.55	0.43
1:A:43:ARG:NE	1:A:46:LEU:HD22	2.33	0.43
1:B:250:VAL:HA	1:B:263:TYR:OH	2.19	0.43
1:B:110:MET:HE3	1:B:114:ARG:HB3	2.01	0.42
1:B:43:ARG:HH11	1:B:46:LEU:CD2	2.27	0.42
1:A:208:GLU:HG3	1:A:213:GLU:C	2.39	0.42
1:A:21:GLY:CA	1:A:43:ARG:HH22	2.23	0.42
1:B:22:MET:O	1:B:43:ARG:CB	2.60	0.42
1:B:48:ARG:HH21	1:B:86:PRO:HG2	1.83	0.42
1:A:64:ALA:HB2	1:B:33:LEU:HD22	2.01	0.42
1:B:68:HIS:HD2	1:B:70:ALA:CB	2.32	0.42
1:A:253:LYS:HE2	1:A:263:TYR:CD1	2.54	0.42
1:B:104:VAL:O	1:B:106:THR:O	2.37	0.42
1:B:67:ASN:OD1	1:B:67:ASN:C	2.57	0.42
1:A:15:GLU:O	1:A:16:ILE:HD13	2.18	0.42
1:A:137:ARG:NH1	1:A:161:ARG:HG3	2.32	0.42
1:A:159:ILE:N	1:A:159:ILE:HD12	2.34	0.42
1:A:185:PRO:O	1:A:188:ALA:CB	2.68	0.42
1:B:279:GLY:O	1:B:280:GLU:C	2.58	0.42
1:B:137:ARG:NH2	1:B:161:ARG:HD3	2.35	0.42
1:A:185:PRO:HB3	1:A:229:VAL:HB	2.02	0.42
1:A:44:ALA:O	1:A:46:LEU:N	2.53	0.42
1:B:185:PRO:O	1:B:186:GLU:C	2.58	0.42
1:B:184:SER:HA	1:B:200:TYR:CD2	2.55	0.42
1:B:258:ASN:HD21	1:B:260:GLU:HB2	1.85	0.42
1:A:233:PRO:HB2	1:A:252:LEU:HD21	2.01	0.41
1:B:139:VAL:HB	1:B:201:SER:HB3	2.02	0.41
1:B:99:THR:HG22	1:B:145:MET:CG	2.50	0.41

Continued on next page...

Continued from previous page...

Atom-1	Atom-2	Interatomic distance (Å)	Clash overlap (Å)
1:A:247:LEU:O	1:A:251:VAL:HG23	2.20	0.41
1:B:135:ILE:HG22	1:B:137:ARG:CG	2.49	0.41
1:B:78:GLY:HA3	1:B:89:TYR:CZ	2.55	0.41
1:A:114:ARG:HD2	1:A:114:ARG:O	2.21	0.41
1:B:143:ASN:ND2	1:B:156:ASP:HB3	2.35	0.41
1:B:189:ARG:HH22	1:B:229:VAL:HG11	1.86	0.41
1:A:54:LEU:CB	1:A:58:ARG:NH1	2.80	0.41
1:B:210:LEU:HD21	1:B:247:LEU:HD11	2.03	0.41
1:B:210:LEU:N	1:B:210:LEU:HD12	2.36	0.41
1:B:57:ARG:HD3	1:B:57:ARG:O	2.19	0.41
1:B:207:TYR:O	1:B:211:THR:HG23	2.21	0.41
1:A:202:LEU:HD23	1:A:202:LEU:HA	1.89	0.41
1:B:159:ILE:CG2	1:B:159:ILE:O	2.66	0.41
1:B:43:ARG:O	1:B:44:ALA:C	2.58	0.41
1:B:45:ASP:CG	1:B:48:ARG:HG2	2.41	0.41
1:B:274:VAL:HG12	1:B:278:ASN:ND2	2.36	0.41
1:B:48:ARG:HG3	1:B:49:ASP:CG	2.40	0.41
1:A:276:VAL:CG2	1:A:282:PRO:HG3	2.51	0.40
1:B:221:PRO:HG2	1:B:222:VAL:H	1.86	0.40
1:B:235:PRO:HA	1:B:236:PRO:HD3	2.00	0.40
1:A:189:ARG:HB2	1:A:191:ASP:OD2	2.20	0.40
1:A:227:GLN:HA	1:A:231:GLU:HG3	2.02	0.40
1:B:29:ARG:NH1	1:B:29:ARG:HG3	2.35	0.40
1:A:110:MET:HB2	1:A:209:VAL:CG1	2.52	0.40
1:A:281:PRO:HA	1:A:282:PRO:HD3	1.85	0.40
1:A:184:SER:OG	1:A:186:GLU:HG2	2.22	0.40
1:B:42:LEU:O	1:B:44:ALA:N	2.55	0.40

There are no symmetry-related clashes.

5.3 Torsion angles ⓘ

5.3.1 Protein backbone ⓘ

In the following table, the Percentiles column shows the percent Ramachandran outliers of the chain as a percentile score with respect to all X-ray entries followed by that with respect to entries of similar resolution.

The Analysed column shows the number of residues for which the backbone conformation was analysed, and the total number of residues.

Mol	Chain	Analysed	Favoured	Allowed	Outliers	Percentiles	
1	A	265/311 (85%)	225 (85%)	25 (9%)	15 (6%)	2	12
1	B	267/311 (86%)	229 (86%)	21 (8%)	17 (6%)	1	8
All	All	532/622 (86%)	454 (85%)	46 (9%)	32 (6%)	2	10

All (32) Ramachandran outliers are listed below:

Mol	Chain	Res	Type
1	A	6	HIS
1	A	44	ALA
1	A	83	PRO
1	A	191	ASP
1	A	230	ARG
1	A	241	GLU
1	A	242	GLY
1	A	278	ASN
1	B	4	PRO
1	B	44	ALA
1	B	50	PRO
1	A	5	SER
1	A	43	ARG
1	A	45	ASP
1	B	45	ASP
1	B	48	ARG
1	B	186	GLU
1	B	280	GLU
1	A	15	GLU
1	A	245	ALA
1	B	43	ARG
1	B	278	ASN
1	B	285	PRO
1	B	49	ASP
1	B	212	GLY
1	B	238	ALA
1	A	285	PRO
1	B	187	GLN
1	B	277	HIS
1	B	279	GLY
1	B	236	PRO
1	A	118	VAL

5.3.2 Protein sidechains ⓘ

In the following table, the Percentiles column shows the percent sidechain outliers of the chain as a percentile score with respect to all X-ray entries followed by that with respect to entries of similar resolution.

The Analysed column shows the number of residues for which the sidechain conformation was analysed, and the total number of residues.

Mol	Chain	Analysed	Rotameric	Outliers	Percentiles	
1	A	219/250 (88%)	205 (94%)	14 (6%)	20	57
1	B	221/250 (88%)	209 (95%)	12 (5%)	26	64
All	All	440/500 (88%)	414 (94%)	26 (6%)	23	60

All (26) residues with a non-rotameric sidechain are listed below:

Mol	Chain	Res	Type
1	A	3	THR
1	A	15	GLU
1	A	24	GLU
1	A	43	ARG
1	A	48	ARG
1	A	52	PHE
1	A	53	TYR
1	A	58	ARG
1	A	83	PRO
1	A	230	ARG
1	A	231	GLU
1	A	239	ARG
1	A	247	LEU
1	A	272	ASP
1	B	45	ASP
1	B	54	LEU
1	B	79	GLU
1	B	92	MET
1	B	155	MET
1	B	161	ARG
1	B	163	ILE
1	B	211	THR
1	B	224	VAL
1	B	252	LEU
1	B	272	ASP
1	B	280	GLU

Some sidechains can be flipped to improve hydrogen bonding and reduce clashes. All (14) such sidechains are listed below:

Mol	Chain	Res	Type
1	A	6	HIS
1	A	34	HIS
1	A	68	HIS
1	A	136	HIS
1	A	227	GLN
1	B	68	HIS
1	B	105	HIS
1	B	124	GLN
1	B	130	HIS
1	B	136	HIS
1	B	150	ASN
1	B	258	ASN
1	B	261	ASN
1	B	278	ASN

5.3.3 RNA ⓘ

There are no RNA molecules in this entry.

5.4 Non-standard residues in protein, DNA, RNA chains ⓘ

There are no non-standard protein/DNA/RNA residues in this entry.

5.5 Carbohydrates ⓘ

There are no carbohydrates in this entry.

5.6 Ligand geometry ⓘ

Of 6 ligands modelled in this entry, 4 are monoatomic - leaving 2 for Mogul analysis.

In the following table, the Counts columns list the number of bonds (or angles) for which Mogul statistics could be retrieved, the number of bonds (or angles) that are observed in the model and the number of bonds (or angles) that are defined in the Chemical Component Dictionary. The Link column lists molecule types, if any, to which the group is linked. The Z score for a bond length (or angle) is the number of standard deviations the observed value is removed from the expected value. A bond length (or angle) with $|Z| > 2$ is considered an outlier worth inspection. RMSZ is the root-mean-square of all Z scores of the bond lengths (or angles).

Mol	Type	Chain	Res	Link	Bond lengths			Bond angles		
					Counts	RMSZ	# Z > 2	Counts	RMSZ	# Z > 2
3	AGS	A	340	2	26,33,33	1.83	5 (19%)	22,52,52	2.39	8 (36%)
3	AGS	B	440	2	26,33,33	1.63	4 (15%)	22,52,52	2.29	7 (31%)

In the following table, the Chirals column lists the number of chiral outliers, the number of chiral centers analysed, the number of these observed in the model and the number defined in the Chemical Component Dictionary. Similar counts are reported in the Torsion and Rings columns. '-' means no outliers of that kind were identified.

Mol	Type	Chain	Res	Link	Chirals	Torsions	Rings
3	AGS	A	340	2	-	0/17/38/38	0/3/3/3
3	AGS	B	440	2	-	0/17/38/38	0/3/3/3

All (9) bond length outliers are listed below:

Mol	Chain	Res	Type	Atoms	Z	Observed(Å)	Ideal(Å)
3	A	340	AGS	O4'-C1'	-3.76	1.36	1.41
3	B	440	AGS	O4'-C1'	-3.53	1.36	1.41
3	A	340	AGS	C2'-C1'	-2.72	1.49	1.53
3	A	340	AGS	C6-N6	-2.24	1.24	1.34
3	B	440	AGS	C6-N6	-2.21	1.25	1.34
3	A	340	AGS	C2-N1	2.49	1.38	1.33
3	B	440	AGS	C2-N1	2.80	1.39	1.33
3	B	440	AGS	PG-S1G	5.20	2.00	1.90
3	A	340	AGS	PG-S1G	6.27	2.02	1.90

All (15) bond angle outliers are listed below:

Mol	Chain	Res	Type	Atoms	Z	Observed(°)	Ideal(°)
3	A	340	AGS	N3-C2-N1	-6.54	123.16	128.86
3	B	440	AGS	N3-C2-N1	-6.30	123.37	128.86
3	A	340	AGS	C2'-C3'-C4'	-3.13	96.52	102.62
3	B	440	AGS	C2'-C3'-C4'	-2.97	96.84	102.62
3	B	440	AGS	C1'-N9-C4	-2.59	122.16	126.64
3	A	340	AGS	C1'-N9-C4	-2.49	122.34	126.64
3	A	340	AGS	C5-C6-N1	-2.21	113.02	119.70
3	B	440	AGS	C5-C6-N1	-2.21	113.03	119.70
3	A	340	AGS	PB-O3B-PG	-2.15	125.40	132.35
3	A	340	AGS	C5-C6-N6	3.45	127.50	120.47
3	B	440	AGS	C5-C6-N6	3.56	127.72	120.47
3	B	440	AGS	C2-N1-C6	3.64	125.14	118.77
3	A	340	AGS	C2-N1-C6	3.71	125.26	118.77
3	B	440	AGS	O3'-C3'-C2'	3.88	124.27	111.83

Continued on next page...

Continued from previous page...

Mol	Chain	Res	Type	Atoms	Z	Observed(°)	Ideal(°)
3	A	340	AGS	O3'-C3'-C2'	4.07	124.86	111.83

There are no chirality outliers.

There are no torsion outliers.

There are no ring outliers.

1 monomer is involved in 1 short contact:

Mol	Chain	Res	Type	Clashes	Symm-Clashes
3	B	440	AGS	1	0

5.7 Other polymers [i](#)

There are no such residues in this entry.

5.8 Polymer linkage issues [i](#)

There are no chain breaks in this entry.

6 Fit of model and data [i](#)

6.1 Protein, DNA and RNA chains [i](#)

In the following table, the column labelled ‘#RSRZ> 2’ contains the number (and percentage) of RSRZ outliers, followed by percent RSRZ outliers for the chain as percentile scores relative to all X-ray entries and entries of similar resolution. The OWAB column contains the minimum, median, 95th percentile and maximum values of the occupancy-weighted average B-factor per residue. The column labelled ‘Q< 0.9’ lists the number of (and percentage) of residues with an average occupancy less than 0.9.

Mol	Chain	Analysed	<RSRZ>	#RSRZ>2	OWAB(Å ²)	Q<0.9
1	A	269/311 (86%)	-0.22	1 (0%) 92 77	31, 54, 76, 90	0
1	B	271/311 (87%)	-0.34	0 100 100	31, 52, 75, 86	0
All	All	540/622 (86%)	-0.28	1 (0%) 94 85	31, 53, 76, 90	0

All (1) RSRZ outliers are listed below:

Mol	Chain	Res	Type	RSRZ
1	A	53	TYR	2.1

6.2 Non-standard residues in protein, DNA, RNA chains [i](#)

There are no non-standard protein/DNA/RNA residues in this entry.

6.3 Carbohydrates [i](#)

There are no carbohydrates in this entry.

6.4 Ligands [i](#)

In the following table, the Atoms column lists the number of modelled atoms in the group and the number defined in the chemical component dictionary. LLDF column lists the quality of electron density of the group with respect to its neighbouring residues in protein, DNA or RNA chains. The B-factors column lists the minimum, median, 95th percentile and maximum values of B factors of atoms in the group. The column labelled ‘Q< 0.9’ lists the number of atoms with occupancy less than 0.9.

Mol	Type	Chain	Res	Atoms	RSCC	RSR	LLDF	B-factors(Å ²)	Q<0.9
2	MG	B	441	1/1	0.97	0.17	-0.42	58,58,58,58	0
3	AGS	B	440	31/31	0.98	0.18	-0.58	43,46,50,51	0

Continued on next page...

Continued from previous page...

Mol	Type	Chain	Res	Atoms	RSCC	RSR	LLDF	B-factors(\AA^2)	Q<0.9
3	AGS	A	340	31/31	0.96	0.19	-0.66	45,48,71,73	0
2	MG	A	341	1/1	0.92	0.11	-2.79	67,67,67,67	0
2	MG	B	442	1/1	0.79	0.21	-	92,92,92,92	0
2	MG	A	342	1/1	0.89	0.14	-	50,50,50,50	0

6.5 Other polymers [i](#)

There are no such residues in this entry.