



Full wwPDB X-ray Structure Validation Report ⓘ

Feb 14, 2017 – 07:03 pm GMT

PDB ID : 3MSS
Title : Abl kinase in complex with imatinib and fragment (FRAG2) in the myristate site
Authors : Cowan-Jacob, S.W.; Rummel, G.; Fendrich, G.
Deposited on : 2010-04-29
Resolution : 1.95 Å(reported)

This is a Full wwPDB X-ray Structure Validation Report for a publicly released PDB entry.

We welcome your comments at validation@mail.wwpdb.org

A user guide is available at

<http://wwpdb.org/validation/2016/XrayValidationReportHelp>

with specific help available everywhere you see the ⓘ symbol.

The following versions of software and data (see [references ⓘ](#)) were used in the production of this report:

MolProbity : 4.02b-467
Mogul : 1.7.2 (RC1), CSD as538be (2017)
Xtriage (Phenix) : 1.9-1692
EDS : trunk28620
Percentile statistics : 20161228.v01 (using entries in the PDB archive December 28th 2016)
Refmac : 5.8.0135
CCP4 : 6.5.0
Ideal geometry (proteins) : Engh & Huber (2001)
Ideal geometry (DNA, RNA) : Parkinson et al. (1996)
Validation Pipeline (wwPDB-VP) : recalc28949

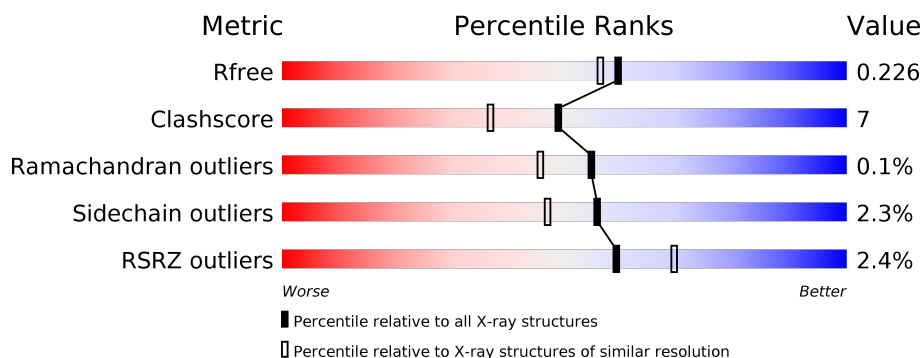
1 Overall quality at a glance

The following experimental techniques were used to determine the structure:

X-RAY DIFFRACTION

The reported resolution of this entry is 1.95 Å.

Percentile scores (ranging between 0-100) for global validation metrics of the entry are shown in the following graphic. The table shows the number of entries on which the scores are based.



Metric	Whole archive (#Entries)	Similar resolution (#Entries, resolution range(Å))
R_{free}	100719	2004 (1.96-1.96)
Clashscore	112137	2136 (1.96-1.96)
Ramachandran outliers	110173	2117 (1.96-1.96)
Sidechain outliers	110143	2117 (1.96-1.96)
RSRZ outliers	101464	2018 (1.96-1.96)

The table below summarises the geometric issues observed across the polymeric chains and their fit to the electron density. The red, orange, yellow and green segments on the lower bar indicate the fraction of residues that contain outliers for ≥ 3 , 2, 1 and 0 types of geometric quality criteria. A grey segment represents the fraction of residues that are not modelled. The numeric value for each fraction is indicated below the corresponding segment, with a dot representing fractions $\leq 5\%$. The upper red bar (where present) indicates the fraction of residues that have poor fit to the electron density. The numeric value is given above the bar.

Mol	Chain	Length	Quality of chain
1	A	293	<div> <div>2%</div> <div> <div></div> <div>77%</div> <div>11%</div> <div>•</div> <div>10%</div> </div> </div>
1	B	293	<div> <div>3%</div> <div> <div></div> <div>78%</div> <div>11%</div> <div>•</div> <div>10%</div> </div> </div>
1	C	293	<div> <div>2%</div> <div> <div></div> <div>76%</div> <div>13%</div> <div>•</div> <div>10%</div> </div> </div>
1	D	293	<div> <div>%</div> <div> <div></div> <div>75%</div> <div>14%</div> <div></div> <div>10%</div> </div> </div>

The following table lists non-polymeric compounds, carbohydrate monomers and non-standard residues in protein, DNA, RNA chains that are outliers for geometric or electron-density-fit crite-

ria:

Mol	Type	Chain	Res	Chirality	Geometry	Clashes	Electron density
3	MS7	A	516	-	-	-	X
3	MS7	B	516	-	-	-	X
3	MS7	C	516	-	-	-	X
3	MS7	D	516	-	-	-	X

2 Entry composition

There are 4 unique types of molecules in this entry. The entry contains 9563 atoms, of which 0 are hydrogens and 0 are deuteriums.

In the tables below, the ZeroOcc column contains the number of atoms modelled with zero occupancy, the AltConf column contains the number of residues with at least one atom in alternate conformation and the Trace column contains the number of residues modelled with at most 2 atoms.

- Molecule 1 is a protein called Tyrosine-protein kinase ABL1.

Mol	Chain	Residues	Atoms					ZeroOcc	AltConf	Trace
1	A	264	Total	C	N	O	S	0	0	0
			2151	1390	350	394	17			
1	B	264	Total	C	N	O	S	0	0	0
			2151	1390	350	394	17			
1	C	264	Total	C	N	O	S	0	0	0
			2151	1390	350	394	17			
1	D	264	Total	C	N	O	S	0	0	0
			2151	1390	350	394	17			

There are 24 discrepancies between the modelled and reference sequences:

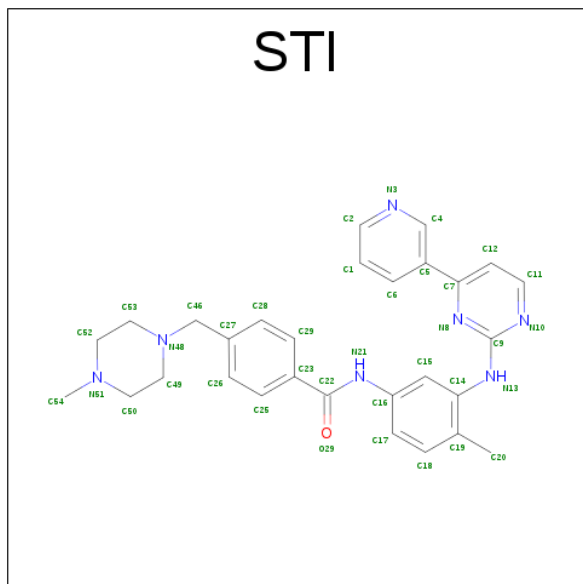
Chain	Residue	Modelled	Actual	Comment	Reference
A	223	GLY	-	EXPRESSION TAG	UNP P00520
A	224	ALA	-	EXPRESSION TAG	UNP P00520
A	225	MET	-	EXPRESSION TAG	UNP P00520
A	226	ASP	-	EXPRESSION TAG	UNP P00520
A	227	PRO	-	EXPRESSION TAG	UNP P00520
A	228	SER	-	EXPRESSION TAG	UNP P00520
B	223	GLY	-	EXPRESSION TAG	UNP P00520
B	224	ALA	-	EXPRESSION TAG	UNP P00520
B	225	MET	-	EXPRESSION TAG	UNP P00520
B	226	ASP	-	EXPRESSION TAG	UNP P00520
B	227	PRO	-	EXPRESSION TAG	UNP P00520
B	228	SER	-	EXPRESSION TAG	UNP P00520
C	223	GLY	-	EXPRESSION TAG	UNP P00520
C	224	ALA	-	EXPRESSION TAG	UNP P00520
C	225	MET	-	EXPRESSION TAG	UNP P00520
C	226	ASP	-	EXPRESSION TAG	UNP P00520
C	227	PRO	-	EXPRESSION TAG	UNP P00520
C	228	SER	-	EXPRESSION TAG	UNP P00520
D	223	GLY	-	EXPRESSION TAG	UNP P00520
D	224	ALA	-	EXPRESSION TAG	UNP P00520
D	225	MET	-	EXPRESSION TAG	UNP P00520

Continued on next page...

Continued from previous page...

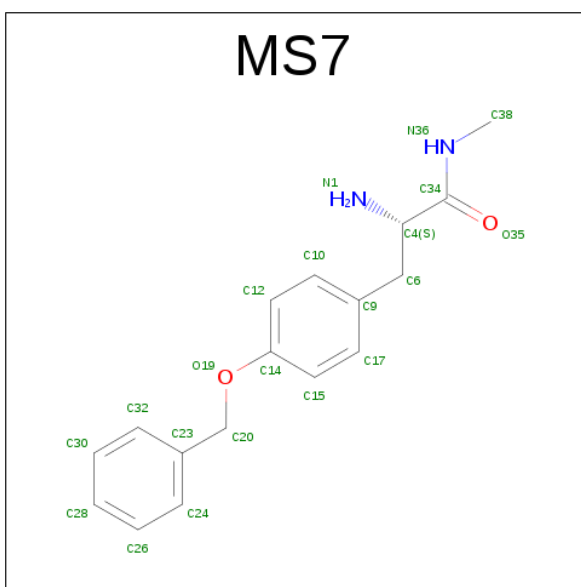
Chain	Residue	Modelled	Actual	Comment	Reference
D	226	ASP	-	EXPRESSION TAG	UNP P00520
D	227	PRO	-	EXPRESSION TAG	UNP P00520
D	228	SER	-	EXPRESSION TAG	UNP P00520

- Molecule 2 is 4-(4-METHYL-PIPERAZIN-1-YLMETHYL)-N-[4-METHYL-3-(4-PYRIDIN-3-YL-PYRIMIDIN-2-YLAMINO)-PHENYL]-BENZAMIDE (three-letter code: STI) (formula: C₂₉H₃₁N₇O).



Mol	Chain	Residues	Atoms				ZeroOcc	AltConf
2	A	1	Total	C	N	O	0	0
			37	29	7	1		
2	B	1	Total	C	N	O	0	0
			37	29	7	1		
2	C	1	Total	C	N	O	0	0
			37	29	7	1		
2	D	1	Total	C	N	O	0	0
			37	29	7	1		

- Molecule 3 is O-BENZYL-N-METHYL-L-TYROSINAMIDE (three-letter code: MS7) (formula: C₁₇H₂₀N₂O₂).



Mol	Chain	Residues	Atoms				ZeroOcc	AltConf
3	A	1	Total	C	N	O	0	0
			21	17	2	2		
3	B	1	Total	C	N	O	0	0
			21	17	2	2		
3	C	1	Total	C	N	O	0	0
			21	17	2	2		
3	D	1	Total	C	N	O	0	0
			21	17	2	2		

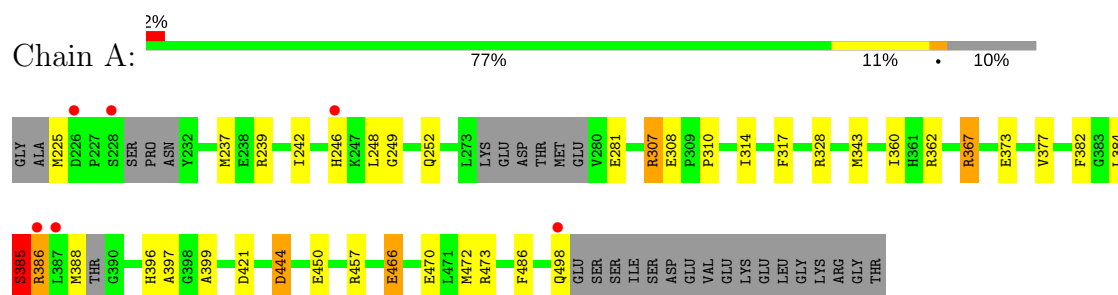
- Molecule 4 is water.

Mol	Chain	Residues	Atoms		ZeroOcc	AltConf
4	A	184	Total	O	0	0
			184	184		
4	B	177	Total	O	0	0
			177	177		
4	C	180	Total	O	0	0
			180	180		
4	D	186	Total	O	0	0
			186	186		

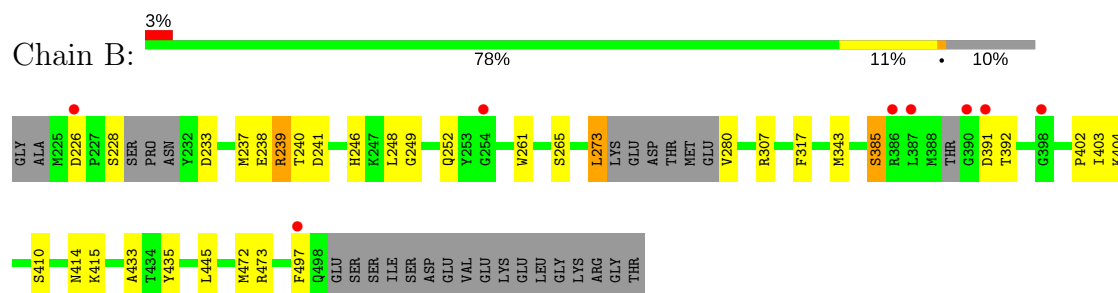
3 Residue-property plots [i](#)

These plots are drawn for all protein, RNA and DNA chains in the entry. The first graphic for a chain summarises the proportions of the various outlier classes displayed in the second graphic. The second graphic shows the sequence view annotated by issues in geometry and electron density. Residues are color-coded according to the number of geometric quality criteria for which they contain at least one outlier: green = 0, yellow = 1, orange = 2 and red = 3 or more. A red dot above a residue indicates a poor fit to the electron density ($RSRZ > 2$). Stretches of 2 or more consecutive residues without any outlier are shown as a green connector. Residues present in the sample, but not in the model, are shown in grey.

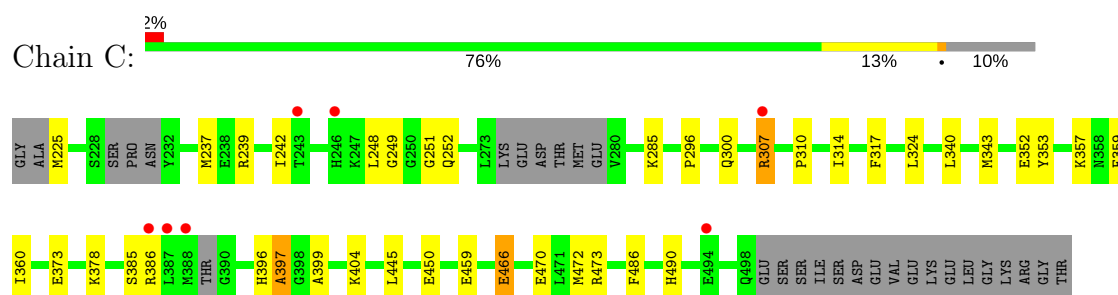
• Molecule 1: Tyrosine-protein kinase ABL1



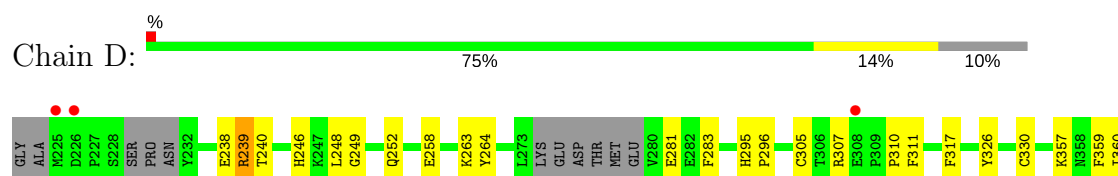
• Molecule 1: Tyrosine-protein kinase ABL1



• Molecule 1: Tyrosine-protein kinase ABL1



• Molecule 1: Tyrosine-protein kinase ABL1





4 Data and refinement statistics

Property	Value	Source
Space group	C 1 2 1	Depositor
Cell constants a, b, c, α , β , γ	116.22Å 146.78Å 95.81Å 90.00° 127.07° 90.00°	Depositor
Resolution (Å)	52.93 – 1.95 36.34 – 1.96	Depositor EDS
% Data completeness (in resolution range)	96.6 (52.93-1.95) 96.2 (36.34-1.96)	Depositor EDS
R_{merge}	0.04	Depositor
R_{sym}	(Not available)	Depositor
$\langle I/\sigma(I) \rangle$ ¹	1.32 (at 1.95Å)	Xtriage
Refinement program	REFMAC 5.5.0102	Depositor
R, R_{free}	0.169 , 0.220 0.175 , 0.226	Depositor DCC
R_{free} test set	4461 reflections (5.26%)	DCC
Wilson B-factor (Å ²)	33.3	Xtriage
Anisotropy	0.122	Xtriage
Bulk solvent k_{sol} (e/Å ³), B_{sol} (Å ²)	0.36 , 31.7	EDS
L-test for twinning ²	$\langle L \rangle = 0.49$, $\langle L^2 \rangle = 0.32$	Xtriage
Estimated twinning fraction	0.026 for -h,-h-2*1,1/2*h-1/2*k 0.025 for -h,h+2*1,1/2*h+1/2*k 0.457 for h,-k,-h-l	Xtriage
F_o, F_c correlation	0.97	EDS
Total number of atoms	9563	wwPDB-VP
Average B, all atoms (Å ²)	28.0	wwPDB-VP

Xtriage's analysis on translational NCS is as follows: *The largest off-origin peak in the Patterson function is 3.71% of the height of the origin peak. No significant pseudotranslation is detected.*

¹Intensities estimated from amplitudes.

²Theoretical values of $\langle |L| \rangle$, $\langle L^2 \rangle$ for acentric reflections are 0.5, 0.333 respectively for untwinned datasets, and 0.375, 0.2 for perfectly twinned datasets.

5 Model quality

5.1 Standard geometry

Bond lengths and bond angles in the following residue types are not validated in this section: MS7, STI

The Z score for a bond length (or angle) is the number of standard deviations the observed value is removed from the expected value. A bond length (or angle) with $|Z| > 5$ is considered an outlier worth inspection. RMSZ is the root-mean-square of all Z scores of the bond lengths (or angles).

Mol	Chain	Bond lengths		Bond angles	
		RMSZ	# Z >5	RMSZ	# Z >5
1	A	1.19	6/2206 (0.3%)	1.01	10/2982 (0.3%)
1	B	1.15	2/2206 (0.1%)	0.96	6/2982 (0.2%)
1	C	1.15	5/2206 (0.2%)	0.96	5/2982 (0.2%)
1	D	1.13	1/2206 (0.0%)	0.93	2/2982 (0.1%)
All	All	1.16	14/8824 (0.2%)	0.97	23/11928 (0.2%)

All (14) bond length outliers are listed below:

Mol	Chain	Res	Type	Atoms	Z	Observed(Å)	Ideal(Å)
1	A	466	GLU	CG-CD	6.88	1.62	1.51
1	A	450	GLU	CG-CD	6.24	1.61	1.51
1	B	385	SER	CB-OG	-6.18	1.34	1.42
1	C	385	SER	CB-OG	-5.86	1.34	1.42
1	C	459	GLU	CG-CD	5.81	1.60	1.51
1	C	450	GLU	CG-CD	5.58	1.60	1.51
1	C	486	PHE	CD1-CE1	5.39	1.50	1.39
1	A	470	GLU	CG-CD	5.36	1.59	1.51
1	A	486	PHE	CD1-CE1	5.23	1.49	1.39
1	D	305	CYS	CB-SG	-5.21	1.73	1.81
1	C	466	GLU	CG-CD	5.19	1.59	1.51
1	A	486	PHE	CE1-CZ	5.16	1.47	1.37
1	A	377	VAL	CB-CG1	5.08	1.63	1.52
1	B	435	TYR	CE1-CZ	5.01	1.45	1.38

All (23) bond angle outliers are listed below:

Mol	Chain	Res	Type	Atoms	Z	Observed(°)	Ideal(°)
1	C	473	ARG	NE-CZ-NH2	-13.28	113.66	120.30
1	A	473	ARG	NE-CZ-NH2	-12.80	113.90	120.30
1	B	473	ARG	NE-CZ-NH2	-10.44	115.08	120.30

Continued on next page...

Continued from previous page...

Mol	Chain	Res	Type	Atoms	Z	Observed(°)	Ideal(°)
1	C	473	ARG	NE-CZ-NH1	9.20	124.90	120.30
1	A	343	MET	CG-SD-CE	-8.48	86.64	100.20
1	A	444	ASP	CB-CG-OD1	-7.54	111.51	118.30
1	B	473	ARG	NE-CZ-NH1	7.30	123.95	120.30
1	C	385	SER	CB-CA-C	-6.41	97.93	110.10
1	A	457	ARG	NE-CZ-NH2	-6.38	117.11	120.30
1	D	472	MET	CG-SD-CE	-6.38	89.99	100.20
1	A	473	ARG	NE-CZ-NH1	6.03	123.31	120.30
1	A	385	SER	CB-CA-C	-5.96	98.77	110.10
1	B	472	MET	CG-SD-CE	-5.86	90.83	100.20
1	A	367	ARG	NE-CZ-NH1	-5.58	117.51	120.30
1	B	343	MET	CG-SD-CE	-5.49	91.42	100.20
1	A	421	ASP	CB-CG-OD1	5.39	123.15	118.30
1	C	472	MET	CG-SD-CE	-5.36	91.63	100.20
1	A	472	MET	CG-SD-CE	-5.33	91.67	100.20
1	B	273	LEU	CB-CG-CD2	-5.20	102.17	111.00
1	B	233	ASP	CB-CG-OD2	-5.15	113.66	118.30
1	C	324	LEU	CB-CG-CD2	-5.15	102.24	111.00
1	A	328	ARG	NE-CZ-NH1	-5.13	117.73	120.30
1	D	429	LEU	CA-CB-CG	5.08	126.98	115.30

There are no chirality outliers.

There are no planarity outliers.

5.2 Too-close contacts

In the following table, the Non-H and H(model) columns list the number of non-hydrogen atoms and hydrogen atoms in the chain respectively. The H(added) column lists the number of hydrogen atoms added and optimized by MolProbity. The Clashes column lists the number of clashes within the asymmetric unit, whereas Symm-Clashes lists symmetry related clashes.

Mol	Chain	Non-H	H(model)	H(added)	Clashes	Symm-Clashes
1	A	2151	0	2105	30	1
1	B	2151	0	2105	19	0
1	C	2151	0	2105	35	0
1	D	2151	0	2105	30	0
2	A	37	0	31	1	0
2	B	37	0	31	0	0
2	C	37	0	31	1	0
2	D	37	0	31	1	0
3	A	21	0	20	1	0

Continued on next page...

Continued from previous page...

Mol	Chain	Non-H	H(model)	H(added)	Clashes	Symm-Clashes
3	B	21	0	20	1	0
3	C	21	0	20	1	0
3	D	21	0	20	1	0
4	A	184	0	0	13	0
4	B	177	0	0	7	0
4	C	180	0	0	12	1
4	D	186	0	0	7	2
All	All	9563	0	8624	119	2

The all-atom clashscore is defined as the number of clashes found per 1000 atoms (including hydrogen atoms). The all-atom clashscore for this structure is 7.

All (119) close contacts within the same asymmetric unit are listed below, sorted by their clash magnitude.

Atom-1	Atom-2	Interatomic distance (Å)	Clash overlap (Å)
1:A:367:ARG:HD2	1:A:388:MET:CE	1.78	1.12
1:A:367:ARG:HD2	1:A:388:MET:HE3	1.40	0.98
3:A:516:MS7:H4	4:A:690:HOH:O	1.69	0.92
1:A:498:GLN:O	4:A:785:HOH:O	1.88	0.91
1:A:367:ARG:HD2	1:A:388:MET:HE1	1.51	0.91
1:D:238:GLU:HG3	1:D:240:THR:HB	1.54	0.87
1:B:415:LYS:HE2	4:B:58:HOH:O	1.76	0.84
1:A:239:ARG:NH1	1:A:310:PRO:O	2.13	0.81
1:D:249:GLY:O	1:D:252:GLN:HG2	1.82	0.80
1:A:225:MET:HB2	4:A:544:HOH:O	1.82	0.78
1:C:239:ARG:NH1	1:C:310:PRO:O	2.13	0.78
1:C:300:GLN:HG3	4:C:595:HOH:O	1.86	0.76
1:A:386:ARG:HD2	4:A:648:HOH:O	1.87	0.73
1:A:237:MET:HB3	4:A:656:HOH:O	1.89	0.73
1:C:490:HIS:HE1	4:C:542:HOH:O	1.72	0.72
1:C:404:LYS:HE3	4:C:799:HOH:O	1.89	0.72
1:B:249:GLY:O	1:B:252:GLN:HG2	1.91	0.71
1:C:242:ILE:CD1	1:C:314:ILE:HD13	2.19	0.71
3:C:516:MS7:H4	4:C:577:HOH:O	1.90	0.71
1:B:385:SER:HB2	4:B:164:HOH:O	1.91	0.70
1:C:249:GLY:O	1:C:252:GLN:HG2	1.92	0.69
1:A:242:ILE:CD1	1:A:314:ILE:HD13	2.24	0.68
1:C:307:ARG:NE	1:C:307:ARG:HA	2.08	0.68
1:D:495:THR:O	4:D:754:HOH:O	2.10	0.68
1:B:391:ASP:OD1	4:B:697:HOH:O	2.14	0.66
1:D:360:ILE:HD12	1:D:360:ILE:N	2.11	0.66

Continued on next page...

Continued from previous page...

Atom-1	Atom-2	Interatomic distance (Å)	Clash overlap (Å)
1:B:246:HIS:H	1:B:246:HIS:CD2	2.14	0.66
1:D:310:PRO:HA	4:D:767:HOH:O	1.95	0.66
1:A:249:GLY:O	1:A:252:GLN:HG2	1.97	0.65
1:C:359:PHE:C	1:C:360:ILE:HD12	2.17	0.65
1:A:444:ASP:HB2	4:A:773:HOH:O	1.95	0.65
1:A:225:MET:N	4:A:126:HOH:O	2.29	0.64
1:A:444:ASP:OD2	4:A:773:HOH:O	2.14	0.64
1:C:225:MET:N	4:C:184:HOH:O	2.31	0.64
1:A:242:ILE:HD13	1:A:314:ILE:HD13	1.80	0.63
1:D:239:ARG:HH11	1:D:239:ARG:HG3	1.64	0.63
1:C:242:ILE:HD11	1:C:314:ILE:HD13	1.80	0.61
1:B:415:LYS:HE3	4:B:626:HOH:O	2.04	0.57
1:D:396:HIS:HE1	4:D:575:HOH:O	1.86	0.57
1:C:242:ILE:HD13	1:C:314:ILE:HD13	1.86	0.57
1:B:238:GLU:HG3	1:B:240:THR:HB	1.86	0.57
1:C:242:ILE:CD1	1:C:314:ILE:CD1	2.84	0.56
1:C:352:GLU:OE2	1:C:490:HIS:CD2	2.58	0.56
1:D:248:LEU:HD11	1:D:317:PHE:HE1	1.70	0.56
1:C:360:ILE:CD1	4:C:674:HOH:O	2.53	0.55
1:C:307:ARG:HE	1:C:307:ARG:HA	1.72	0.55
1:C:396:HIS:N	1:C:399:ALA:O	2.40	0.54
1:C:248:LEU:HD11	1:C:317:PHE:HE1	1.70	0.54
1:A:396:HIS:N	1:A:399:ALA:O	2.33	0.54
1:D:495:THR:C	4:D:754:HOH:O	2.46	0.53
1:B:497:PHE:HD1	4:B:548:HOH:O	1.92	0.53
1:D:359:PHE:C	1:D:360:ILE:HD12	2.29	0.53
1:C:353:TYR:CZ	1:C:357:LYS:HD2	2.45	0.52
1:C:360:ILE:N	1:C:360:ILE:HD12	2.24	0.52
1:D:414:ASN:O	1:D:414:ASN:ND2	2.42	0.52
1:D:263:LYS:HE2	1:D:264:TYR:CE1	2.45	0.52
1:D:263:LYS:HE2	1:D:264:TYR:CZ	2.45	0.52
1:B:403:ILE:HD11	4:B:671:HOH:O	2.10	0.51
1:D:246:HIS:CD2	1:D:246:HIS:H	2.27	0.51
1:C:242:ILE:HD13	1:C:314:ILE:CD1	2.40	0.51
1:C:404:LYS:HE2	1:C:445:LEU:CD2	2.41	0.51
1:A:307:ARG:HA	1:A:307:ARG:NE	2.25	0.51
1:C:360:ILE:HD11	4:C:674:HOH:O	2.09	0.51
1:D:396:HIS:CE1	4:D:575:HOH:O	2.63	0.49
1:A:367:ARG:CD	1:A:388:MET:HE3	2.27	0.49
1:C:237:MET:HB3	4:C:593:HOH:O	2.13	0.48
1:A:397:ALA:C	1:A:399:ALA:H	2.17	0.48

Continued on next page...

Continued from previous page...

Atom-1	Atom-2	Interatomic distance (Å)	Clash overlap (Å)
1:A:384:LEU:HD13	1:A:388:MET:CE	2.44	0.48
1:C:386:ARG:NH2	4:C:676:HOH:O	2.47	0.48
1:C:237:MET:SD	1:C:314:ILE:HD12	2.53	0.48
1:A:382:PHE:HB2	1:A:384:LEU:HG	1.97	0.47
1:D:433:ALA:HA	3:D:516:MS7:H30	1.97	0.47
2:C:1:STI:H151	2:C:1:STI:O29	2.14	0.47
1:C:251:GLY:HA2	4:C:121:HOH:O	2.14	0.47
1:C:285:LYS:HE3	4:C:590:HOH:O	2.14	0.47
1:C:296:PRO:O	1:C:378:LYS:HE2	2.14	0.47
1:A:444:ASP:CG	4:A:773:HOH:O	2.54	0.47
1:C:340:LEU:HA	1:C:343:MET:HE2	1.97	0.47
1:A:386:ARG:HB2	4:A:538:HOH:O	2.14	0.46
1:D:384:LEU:HD23	1:D:387:LEU:HD12	1.96	0.46
1:B:239:ARG:HG2	1:B:240:THR:N	2.29	0.46
1:B:237:MET:HE1	1:B:261:TRP:CE2	2.51	0.46
1:A:248:LEU:HD12	1:A:248:LEU:HA	1.76	0.46
1:B:273:LEU:HD21	1:B:280:VAL:HA	1.98	0.46
1:A:246:HIS:HB2	4:A:525:HOH:O	2.15	0.46
1:A:444:ASP:CB	4:A:773:HOH:O	2.58	0.45
2:D:1:STI:O29	2:D:1:STI:H151	2.17	0.45
1:A:396:HIS:O	1:A:399:ALA:N	2.49	0.45
1:D:410:SER:O	1:D:414:ASN:HA	2.17	0.45
1:D:248:LEU:HD13	1:D:258:GLU:HB2	2.00	0.44
1:D:295:HIS:CE1	1:D:296:PRO:HD2	2.53	0.44
1:D:387:LEU:HG	1:D:387:LEU:H	1.58	0.44
1:D:401:PHE:HB2	1:D:403:ILE:HD13	2.00	0.44
1:C:404:LYS:HE2	1:C:445:LEU:HD23	2.00	0.44
1:A:248:LEU:HD11	1:A:317:PHE:HE1	1.83	0.43
1:B:404:LYS:HE3	1:B:445:LEU:HD12	1.99	0.43
1:B:410:SER:O	1:B:414:ASN:HA	2.18	0.43
2:A:1:STI:O29	2:A:1:STI:H151	2.20	0.42
1:D:496:MET:HA	4:D:754:HOH:O	2.20	0.42
1:A:237:MET:SD	1:A:314:ILE:HD12	2.60	0.42
1:A:360:ILE:HG22	1:A:362:ARG:HG3	2.01	0.42
1:B:445:LEU:HD11	4:B:517:HOH:O	2.19	0.42
1:D:326:TYR:O	1:D:330:CYS:HB3	2.20	0.42
1:C:466:GLU:O	1:C:470:GLU:HG3	2.20	0.42
1:A:385:SER:CB	4:A:559:HOH:O	2.68	0.42
1:B:392:THR:O	1:B:402:PRO:HA	2.21	0.41
1:D:248:LEU:HD12	1:D:248:LEU:HA	1.76	0.41
1:D:406:THR:HG22	1:D:410:SER:HB2	2.02	0.41

Continued on next page...

Continued from previous page...

Atom-1	Atom-2	Interatomic distance (Å)	Clash overlap (Å)
1:B:237:MET:CE	1:B:261:TRP:CE2	3.04	0.41
1:C:396:HIS:O	1:C:397:ALA:C	2.58	0.41
1:C:386:ARG:HB2	4:C:591:HOH:O	2.21	0.41
1:D:283:PHE:CE2	1:D:311:PHE:HB3	2.55	0.41
1:B:248:LEU:HD11	1:B:317:PHE:HE1	1.85	0.41
1:C:307:ARG:NE	1:C:307:ARG:CA	2.81	0.41
1:D:239:ARG:HH11	1:D:239:ARG:CG	2.32	0.41
1:B:433:ALA:HA	3:B:516:MS7:H30	2.02	0.40
1:C:404:LYS:HE2	1:C:445:LEU:HD21	2.02	0.40
1:D:394:THR:HG22	4:D:678:HOH:O	2.22	0.40
1:D:466:GLU:O	1:D:470:GLU:HG3	2.22	0.40

All (2) symmetry-related close contacts are listed below. The label for Atom-2 includes the symmetry operator and encoded unit-cell translations to be applied.

Atom-1	Atom-2	Interatomic distance (Å)	Clash overlap (Å)
1:A:466:GLU:OE2	4:D:523:HOH:O[4_454]	2.08	0.12
4:C:211:HOH:O	4:D:572:HOH:O[4_454]	2.18	0.02

5.3 Torsion angles ⓘ

5.3.1 Protein backbone ⓘ

In the following table, the Percentiles column shows the percent Ramachandran outliers of the chain as a percentile score with respect to all X-ray entries followed by that with respect to entries of similar resolution.

The Analysed column shows the number of residues for which the backbone conformation was analysed, and the total number of residues.

Mol	Chain	Analysed	Favoured	Allowed	Outliers	Percentiles	
1	A	256/293 (87%)	245 (96%)	11 (4%)	0	100	100
1	B	256/293 (87%)	246 (96%)	10 (4%)	0	100	100
1	C	256/293 (87%)	245 (96%)	10 (4%)	1 (0%)	38	25
1	D	256/293 (87%)	245 (96%)	11 (4%)	0	100	100
All	All	1024/1172 (87%)	981 (96%)	42 (4%)	1 (0%)	55	46

All (1) Ramachandran outliers are listed below:

Mol	Chain	Res	Type
1	C	397	ALA

5.3.2 Protein sidechains ⓘ

In the following table, the Percentiles column shows the percent sidechain outliers of the chain as a percentile score with respect to all X-ray entries followed by that with respect to entries of similar resolution.

The Analysed column shows the number of residues for which the sidechain conformation was analysed, and the total number of residues.

Mol	Chain	Analysed	Rotameric	Outliers	Percentiles	
1	A	230/255 (90%)	224 (97%)	6 (3%)	51	40
1	B	230/255 (90%)	224 (97%)	6 (3%)	51	40
1	C	230/255 (90%)	228 (99%)	2 (1%)	82	81
1	D	230/255 (90%)	223 (97%)	7 (3%)	46	34
All	All	920/1020 (90%)	899 (98%)	21 (2%)	56	47

All (21) residues with a non-rotameric sidechain are listed below:

Mol	Chain	Res	Type
1	A	281	GLU
1	A	307	ARG
1	A	308	GLU
1	A	373	GLU
1	A	385	SER
1	A	386	ARG
1	B	226	ASP
1	B	228	SER
1	B	239	ARG
1	B	241	ASP
1	B	265	SER
1	B	307	ARG
1	C	307	ARG
1	C	373	GLU
1	D	239	ARG
1	D	281	GLU
1	D	307	ARG
1	D	357	LYS
1	D	373	GLU
1	D	386	ARG
1	D	391	ASP

Some sidechains can be flipped to improve hydrogen bonding and reduce clashes. All (7) such sidechains are listed below:

Mol	Chain	Res	Type
1	B	246	HIS
1	B	374	ASN
1	C	447	GLN
1	C	490	HIS
1	D	246	HIS
1	D	396	HIS
1	D	477	GLN

5.3.3 RNA [i](#)

There are no RNA molecules in this entry.

5.4 Non-standard residues in protein, DNA, RNA chains [i](#)

There are no non-standard protein/DNA/RNA residues in this entry.

5.5 Carbohydrates [i](#)

There are no carbohydrates in this entry.

5.6 Ligand geometry [i](#)

8 ligands are modelled in this entry.

In the following table, the Counts columns list the number of bonds (or angles) for which Mogul statistics could be retrieved, the number of bonds (or angles) that are observed in the model and the number of bonds (or angles) that are defined in the chemical component dictionary. The Link column lists molecule types, if any, to which the group is linked. The Z score for a bond length (or angle) is the number of standard deviations the observed value is removed from the expected value. A bond length (or angle) with $|Z| > 2$ is considered an outlier worth inspection. RMSZ is the root-mean-square of all Z scores of the bond lengths (or angles).

Mol	Type	Chain	Res	Link	Bond lengths			Bond angles		
					Counts	RMSZ	# Z > 2	Counts	RMSZ	# Z > 2
2	STI	A	1	-	41,41,41	1.36	7 (17%)	56,56,56	2.49	14 (25%)
3	MS7	A	516	-	22,22,22	1.30	1 (4%)	27,28,28	1.05	3 (11%)
2	STI	B	1	-	41,41,41	1.28	3 (7%)	56,56,56	1.99	14 (25%)
3	MS7	B	516	-	22,22,22	1.14	1 (4%)	27,28,28	1.02	1 (3%)

Mol	Type	Chain	Res	Link	Bond lengths			Bond angles		
					Counts	RMSZ	# Z > 2	Counts	RMSZ	# Z > 2
2	STI	C	1	-	41,41,41	1.23	4 (9%)	56,56,56	2.34	12 (21%)
3	MS7	C	516	-	22,22,22	1.21	1 (4%)	27,28,28	0.89	1 (3%)
2	STI	D	1	-	41,41,41	1.17	3 (7%)	56,56,56	2.29	16 (28%)
3	MS7	D	516	-	22,22,22	1.24	1 (4%)	27,28,28	1.01	1 (3%)

In the following table, the Chirals column lists the number of chiral outliers, the number of chiral centers analysed, the number of these observed in the model and the number defined in the chemical component dictionary. Similar counts are reported in the Torsion and Rings columns. '-' means no outliers of that kind were identified.

Mol	Type	Chain	Res	Link	Chirals	Torsions	Rings
2	STI	A	1	-	-	0/20/30/30	0/5/5/5
3	MS7	A	516	-	-	0/15/15/15	0/2/2/2
2	STI	B	1	-	-	0/20/30/30	0/5/5/5
3	MS7	B	516	-	-	0/15/15/15	0/2/2/2
2	STI	C	1	-	-	0/20/30/30	0/5/5/5
3	MS7	C	516	-	-	0/15/15/15	0/2/2/2
2	STI	D	1	-	-	0/20/30/30	0/5/5/5
3	MS7	D	516	-	-	0/15/15/15	0/2/2/2

All (21) bond length outliers are listed below:

Mol	Chain	Res	Type	Atoms	Z	Observed(Å)	Ideal(Å)
2	D	1	STI	C54-N51	2.12	1.52	1.46
2	C	1	STI	C49-N48	2.14	1.52	1.47
2	A	1	STI	C2-N3	2.19	1.40	1.33
2	A	1	STI	C20-C19	2.25	1.55	1.51
2	A	1	STI	C29-C28	2.29	1.42	1.38
2	D	1	STI	C17-C16	2.30	1.43	1.39
2	A	1	STI	C4-C5	2.33	1.43	1.39
2	A	1	STI	C46-N48	2.35	1.52	1.47
2	C	1	STI	C4-C5	2.44	1.43	1.39
2	A	1	STI	C49-N48	2.55	1.53	1.47
2	B	1	STI	C17-C16	2.56	1.43	1.39
2	C	1	STI	C46-C27	2.59	1.56	1.51
2	B	1	STI	C15-C14	2.59	1.43	1.39
2	C	1	STI	C46-N48	2.78	1.52	1.47
2	D	1	STI	C20-C19	3.49	1.57	1.51
2	A	1	STI	C46-C27	3.61	1.58	1.51
2	B	1	STI	C20-C19	3.73	1.58	1.51
3	C	516	MS7	C34-N36	3.75	1.38	1.32

Continued on next page...

Continued from previous page...

Mol	Chain	Res	Type	Atoms	Z	Observed(Å)	Ideal(Å)
3	B	516	MS7	C34-N36	3.81	1.38	1.32
3	A	516	MS7	C34-N36	3.97	1.38	1.32
3	D	516	MS7	C34-N36	4.22	1.39	1.32

All (62) bond angle outliers are listed below:

Mol	Chain	Res	Type	Atoms	Z	Observed(°)	Ideal(°)
2	D	1	STI	N10-C9-N8	-7.06	119.88	126.68
2	A	1	STI	N10-C9-N8	-6.61	120.32	126.68
2	C	1	STI	N10-C9-N8	-6.54	120.39	126.68
2	A	1	STI	C12-C11-N10	-5.11	118.03	123.92
2	B	1	STI	N10-C9-N8	-4.69	122.17	126.68
2	B	1	STI	C12-C11-N10	-4.55	118.67	123.92
2	A	1	STI	C54-N51-C52	-4.54	103.83	110.67
2	C	1	STI	C12-C11-N10	-4.47	118.76	123.92
2	C	1	STI	C12-C7-N8	-3.75	116.89	121.97
2	A	1	STI	C12-C7-N8	-3.62	117.06	121.97
2	A	1	STI	C49-C50-N51	-3.45	106.83	110.79
2	C	1	STI	C54-N51-C52	-3.21	105.84	110.67
2	D	1	STI	C25-C26-C27	-2.83	117.12	121.02
2	A	1	STI	C26-C25-C23	-2.72	117.74	120.79
2	A	1	STI	O29-C22-C23	-2.57	116.37	120.94
2	C	1	STI	C29-C28-C27	-2.53	117.52	121.02
2	B	1	STI	C25-C26-C27	-2.51	117.55	121.02
2	D	1	STI	C12-C11-N10	-2.45	121.09	123.92
2	D	1	STI	C20-C19-C14	-2.40	118.86	121.33
2	A	1	STI	C14-N13-C9	-2.38	121.41	129.51
2	D	1	STI	C28-C29-C23	-2.36	118.16	120.79
2	B	1	STI	C52-C53-N48	-2.30	105.98	110.63
3	A	516	MS7	O35-C34-C4	-2.27	114.71	120.04
2	B	1	STI	C46-C27-C26	-2.21	116.58	120.78
2	D	1	STI	C52-C53-N48	-2.18	106.22	110.63
2	D	1	STI	C17-C18-C19	-2.03	119.12	121.99
2	C	1	STI	C53-C52-N51	2.03	113.12	110.79
3	C	516	MS7	C20-O19-C14	2.04	122.70	117.61
3	A	516	MS7	C32-C23-C24	2.16	121.58	118.16
2	C	1	STI	C18-C19-C14	2.21	119.21	117.42
2	B	1	STI	C2-N3-C4	2.23	120.73	116.83
2	A	1	STI	C29-C23-C25	2.28	121.73	118.58
2	B	1	STI	C28-C27-C26	2.28	121.77	118.16
3	B	516	MS7	C28-C30-C32	2.32	123.40	120.21
2	C	1	STI	C28-C27-C26	2.33	121.86	118.16

Continued on next page...

Continued from previous page...

Mol	Chain	Res	Type	Atoms	Z	Observed(°)	Ideal(°)
2	B	1	STI	C46-N48-C53	2.40	116.16	111.08
2	D	1	STI	C28-C27-C26	2.40	121.97	118.16
2	A	1	STI	C2-N3-C4	2.46	121.14	116.83
3	A	516	MS7	C20-O19-C14	2.69	124.30	117.61
2	B	1	STI	C49-N48-C53	2.71	115.01	108.87
2	D	1	STI	C49-N48-C53	2.85	115.33	108.87
2	C	1	STI	C46-N48-C53	2.85	117.12	111.08
3	D	516	MS7	C20-O19-C14	2.90	124.85	117.61
2	D	1	STI	C54-N51-C52	2.92	115.08	110.67
2	D	1	STI	C2-N3-C4	3.12	122.29	116.83
2	B	1	STI	C11-C12-C7	3.25	120.09	117.24
2	C	1	STI	C11-C12-C7	3.33	120.16	117.24
2	A	1	STI	C46-N48-C53	3.54	118.58	111.08
2	B	1	STI	C50-N51-C52	3.59	114.25	109.47
2	D	1	STI	C50-N51-C52	3.74	114.46	109.47
2	D	1	STI	C46-N48-C53	3.85	119.24	111.08
2	A	1	STI	C11-C12-C7	4.19	120.91	117.24
2	B	1	STI	C18-C19-C14	4.33	120.92	117.42
2	B	1	STI	C7-N8-C9	4.37	119.67	116.55
2	B	1	STI	C11-N10-C9	4.82	119.45	115.43
2	D	1	STI	C18-C19-C14	5.26	121.68	117.42
2	D	1	STI	C11-N10-C9	5.75	120.23	115.43
2	C	1	STI	C11-N10-C9	6.50	120.85	115.43
2	D	1	STI	C7-N8-C9	6.65	121.29	116.55
2	A	1	STI	C11-N10-C9	7.10	121.35	115.43
2	A	1	STI	C7-N8-C9	8.09	122.32	116.55
2	C	1	STI	C7-N8-C9	8.93	122.92	116.55

There are no chirality outliers.

There are no torsion outliers.

There are no ring outliers.

7 monomers are involved in 7 short contacts:

Mol	Chain	Res	Type	Clashes	Symm-Clashes
2	A	1	STI	1	0
3	A	516	MS7	1	0
3	B	516	MS7	1	0
2	C	1	STI	1	0
3	C	516	MS7	1	0
2	D	1	STI	1	0
3	D	516	MS7	1	0

5.7 Other polymers

There are no such residues in this entry.

5.8 Polymer linkage issues

There are no chain breaks in this entry.

6 Fit of model and data

6.1 Protein, DNA and RNA chains

In the following table, the column labelled ‘#RSRZ > 2’ contains the number (and percentage) of RSRZ outliers, followed by percent RSRZ outliers for the chain as percentile scores relative to all X-ray entries and entries of similar resolution. The OWAB column contains the minimum, median, 95th percentile and maximum values of the occupancy-weighted average B-factor per residue. The column labelled ‘Q < 0.9’ lists the number of (and percentage) of residues with an average occupancy less than 0.9.

Mol	Chain	Analysed	<RSRZ>	#RSRZ>2	OWAB(Å ²)	Q<0.9
1	A	264/293 (90%)	0.09	6 (2%) 61 71	15, 25, 45, 54	0
1	B	264/293 (90%)	0.19	8 (3%) 51 61	15, 24, 45, 58	0
1	C	264/293 (90%)	0.11	7 (2%) 55 65	16, 25, 45, 53	0
1	D	264/293 (90%)	0.13	4 (1%) 74 82	16, 25, 45, 56	0
All	All	1056/1172 (90%)	0.13	25 (2%) 59 69	15, 25, 46, 58	0

All (25) RSRZ outliers are listed below:

Mol	Chain	Res	Type	RSRZ
1	C	246	HIS	4.4
1	B	391	ASP	3.7
1	C	388	MET	3.6
1	D	308	GLU	3.2
1	A	246	HIS	3.2
1	C	387	LEU	3.1
1	B	398	GLY	3.0
1	B	386	ARG	2.7
1	A	386	ARG	2.5
1	B	387	LEU	2.4
1	A	498	GLN	2.4
1	C	386	ARG	2.4
1	C	243	THR	2.3
1	D	386	ARG	2.3
1	A	387	LEU	2.3
1	D	226	ASP	2.2
1	D	225	MET	2.2
1	B	390	GLY	2.2
1	A	226	ASP	2.1
1	B	254	GLY	2.1
1	A	228	SER	2.1

Continued on next page...

Continued from previous page...

Mol	Chain	Res	Type	RSRZ
1	C	307	ARG	2.0
1	B	497	PHE	2.0
1	C	494	GLU	2.0
1	B	226	ASP	2.0

6.2 Non-standard residues in protein, DNA, RNA chains [i](#)

There are no non-standard protein/DNA/RNA residues in this entry.

6.3 Carbohydrates [i](#)

There are no carbohydrates in this entry.

6.4 Ligands [i](#)

In the following table, the Atoms column lists the number of modelled atoms in the group and the number defined in the chemical component dictionary. LLDF column lists the quality of electron density of the group with respect to its neighbouring residues in protein, DNA or RNA chains. The B-factors column lists the minimum, median, 95th percentile and maximum values of B factors of atoms in the group. The column labelled 'Q< 0.9' lists the number of atoms with occupancy less than 0.9.

Mol	Type	Chain	Res	Atoms	RSCC	RSR	LLDF	B-factors(Å ²)	Q<0.9
3	MS7	D	516	21/21	0.85	0.21	7.11	30,37,61,62	0
3	MS7	C	516	21/21	0.86	0.20	5.14	29,35,59,60	0
3	MS7	A	516	21/21	0.89	0.16	4.98	26,34,57,58	0
3	MS7	B	516	21/21	0.86	0.18	3.78	29,35,62,63	0
2	STI	A	1	37/37	0.96	0.12	0.15	19,22,26,27	0
2	STI	B	1	37/37	0.93	0.10	-0.52	18,22,27,28	0
2	STI	D	1	37/37	0.96	0.09	-0.78	17,22,27,27	0
2	STI	C	1	37/37	0.96	0.09	-0.98	17,22,30,31	0

6.5 Other polymers [i](#)

There are no such residues in this entry.