



Full wwPDB X-ray Structure Validation Report ⓘ

Feb 13, 2017 – 06:58 am GMT

PDB ID : 4MSG
Title : Crystal structure of tankyrase 1 with compound 22
Authors : Huang, X.
Deposited on : 2013-09-18
Resolution : 1.80 Å(reported)

This is a Full wwPDB X-ray Structure Validation Report for a publicly released PDB entry.

We welcome your comments at validation@mail.wwpdb.org

A user guide is available at

<http://wwpdb.org/validation/2016/XrayValidationReportHelp>

with specific help available everywhere you see the ⓘ symbol.

The following versions of software and data (see [references ⓘ](#)) were used in the production of this report:

MolProbity : 4.02b-467
Mogul : 1.7.2 (RC1), CSD as538be (2017)
Xtriage (Phenix) : 1.9-1692
EDS : trunk28620
Percentile statistics : 20161228.v01 (using entries in the PDB archive December 28th 2016)
Refmac : 5.8.0135
CCP4 : 6.5.0
Ideal geometry (proteins) : Engh & Huber (2001)
Ideal geometry (DNA, RNA) : Parkinson et al. (1996)
Validation Pipeline (wwPDB-VP) : recalc28949

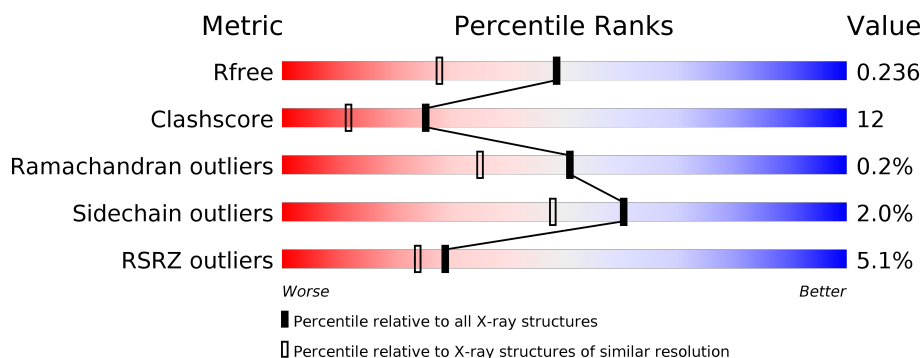
1 Overall quality at a glance

The following experimental techniques were used to determine the structure:

X-RAY DIFFRACTION

The reported resolution of this entry is 1.80 Å.

Percentile scores (ranging between 0-100) for global validation metrics of the entry are shown in the following graphic. The table shows the number of entries on which the scores are based.



Metric	Whole archive (#Entries)	Similar resolution (#Entries, resolution range(Å))
R_{free}	100719	4827 (1.80-1.80)
Clashscore	112137	5742 (1.80-1.80)
Ramachandran outliers	110173	5676 (1.80-1.80)
Sidechain outliers	110143	5675 (1.80-1.80)
RSRZ outliers	101464	4906 (1.80-1.80)

The table below summarises the geometric issues observed across the polymeric chains and their fit to the electron density. The red, orange, yellow and green segments on the lower bar indicate the fraction of residues that contain outliers for ≥ 3 , 2, 1 and 0 types of geometric quality criteria. A grey segment represents the fraction of residues that are not modelled. The numeric value for each fraction is indicated below the corresponding segment, with a dot representing fractions $\leq 5\%$. The upper red bar (where present) indicates the fraction of residues that have poor fit to the electron density. The numeric value is given above the bar.

Mol	Chain	Length	Quality of chain
1	A	217	<div> <div>3%</div> <div> <div></div> <div>84%</div> <div>12%</div> <div>••</div> </div> </div>
1	B	217	<div> <div>7%</div> <div> <div></div> <div>71%</div> <div>21%</div> <div>• 7%</div> </div> </div>

2 Entry composition

There are 4 unique types of molecules in this entry. The entry contains 3842 atoms, of which 0 are hydrogens and 0 are deuteriums.

In the tables below, the ZeroOcc column contains the number of atoms modelled with zero occupancy, the AltConf column contains the number of residues with at least one atom in alternate conformation and the Trace column contains the number of residues modelled with at most 2 atoms.

- Molecule 1 is a protein called Tankyrase-1.

Mol	Chain	Residues	Atoms					ZeroOcc	AltConf	Trace
1	A	211	Total	C	N	O	S	0	0	0
			1687	1063	306	306	12			
1	B	202	Total	C	N	O	S	0	0	0
			1620	1019	297	294	10			

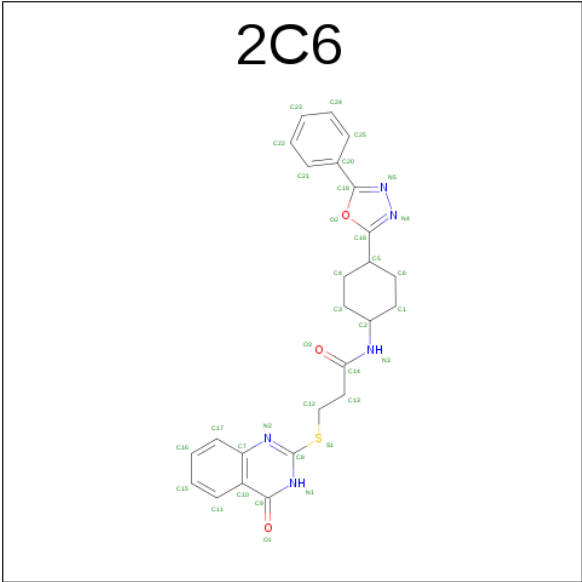
There are 12 discrepancies between the modelled and reference sequences:

Chain	Residue	Modelled	Actual	Comment	Reference
A	1315	HIS	-	EXPRESSION TAG	UNP O95271
A	1316	HIS	-	EXPRESSION TAG	UNP O95271
A	1317	HIS	-	EXPRESSION TAG	UNP O95271
A	1318	HIS	-	EXPRESSION TAG	UNP O95271
A	1319	HIS	-	EXPRESSION TAG	UNP O95271
A	1320	HIS	-	EXPRESSION TAG	UNP O95271
B	1315	HIS	-	EXPRESSION TAG	UNP O95271
B	1316	HIS	-	EXPRESSION TAG	UNP O95271
B	1317	HIS	-	EXPRESSION TAG	UNP O95271
B	1318	HIS	-	EXPRESSION TAG	UNP O95271
B	1319	HIS	-	EXPRESSION TAG	UNP O95271
B	1320	HIS	-	EXPRESSION TAG	UNP O95271

- Molecule 2 is ZINC ION (three-letter code: ZN) (formula: Zn).

Mol	Chain	Residues	Atoms		ZeroOcc	AltConf
2	B	1	Total	Zn	0	0
			1	1		
2	A	1	Total	Zn	0	0
			1	1		

- Molecule 3 is 3-[(4-OXO-3,4-DIHYDROQUINAZOLIN-2-YL)SULFANYL]-N-[TRANS-4-(5-PHENYL-1,3,4-OXADIAZOL-2-YL)CYCLOHEXYL]PROPANAMIDE (three-letter code: 2C6) (formula: C₂₅H₂₅N₅O₃S).



Mol	Chain	Residues	Atoms					ZeroOcc	AltConf
3	A	1	Total	C	N	O	S	0	0
			34	25	5	3	1		
3	B	1	Total	C	N	O	S	0	0
			34	25	5	3	1		

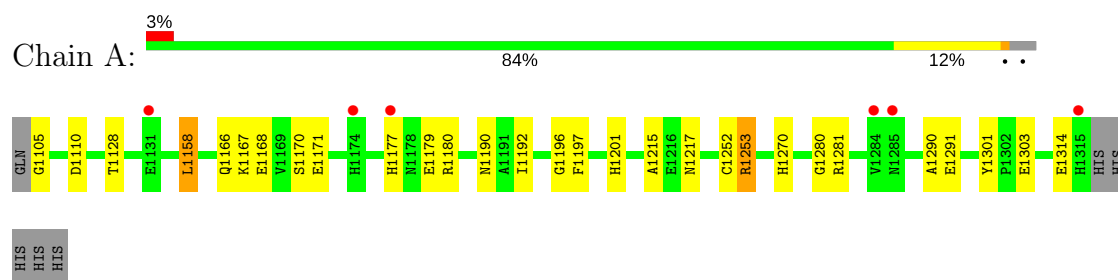
- Molecule 4 is water.

Mol	Chain	Residues	Atoms		ZeroOcc	AltConf
4	A	274	Total	O	0	0
			274	274		
4	B	191	Total	O	0	0
			191	191		

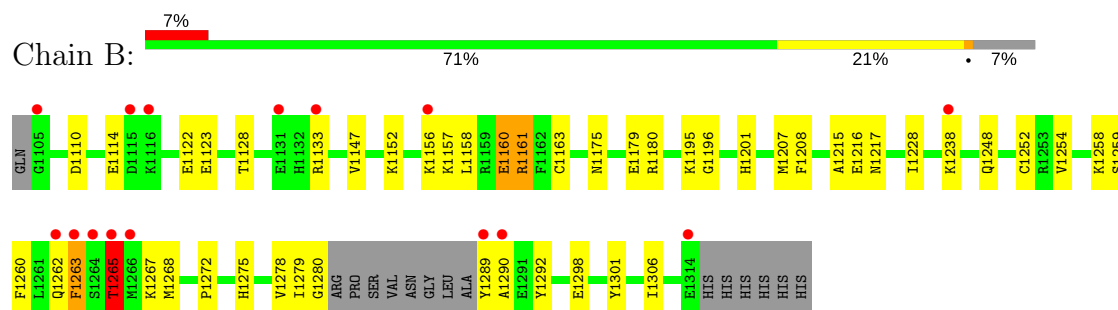
3 Residue-property plots [i](#)

These plots are drawn for all protein, RNA and DNA chains in the entry. The first graphic for a chain summarises the proportions of the various outlier classes displayed in the second graphic. The second graphic shows the sequence view annotated by issues in geometry and electron density. Residues are color-coded according to the number of geometric quality criteria for which they contain at least one outlier: green = 0, yellow = 1, orange = 2 and red = 3 or more. A red dot above a residue indicates a poor fit to the electron density ($RSRZ > 2$). Stretches of 2 or more consecutive residues without any outlier are shown as a green connector. Residues present in the sample, but not in the model, are shown in grey.

• Molecule 1: Tankyrase-1



• Molecule 1: Tankyrase-1



4 Data and refinement statistics

Property	Value	Source
Space group	P 21 21 21	Depositor
Cell constants a, b, c, α , β , γ	41.53Å 77.57Å 148.15Å 90.00° 90.00° 90.00°	Depositor
Resolution (Å)	50.00 – 1.80 37.52 – 1.79	Depositor EDS
% Data completeness (in resolution range)	(Not available) (50.00-1.80) 99.8 (37.52-1.79)	Depositor EDS
R_{merge}	(Not available)	Depositor
R_{sym}	(Not available)	Depositor
$\langle I/\sigma(I) \rangle$ ¹	2.96 (at 1.79Å)	Xtriage
Refinement program	CNS	Depositor
R, R_{free}	0.212 , 0.234 0.216 , 0.236	Depositor DCC
R_{free} test set	2287 reflections (5.05%)	DCC
Wilson B-factor (Å ²)	20.8	Xtriage
Anisotropy	0.524	Xtriage
Bulk solvent k_{sol} (e/Å ³), B_{sol} (Å ²)	0.34 , 42.8	EDS
L-test for twinning ²	$\langle L \rangle = 0.51$, $\langle L^2 \rangle = 0.34$	Xtriage
Estimated twinning fraction	No twinning to report.	Xtriage
F_o, F_c correlation	0.95	EDS
Total number of atoms	3842	wwPDB-VP
Average B, all atoms (Å ²)	23.0	wwPDB-VP

Xtriage's analysis on translational NCS is as follows: *The largest off-origin peak in the Patterson function is 12.61% of the height of the origin peak. No significant pseudotranslation is detected.*

¹Intensities estimated from amplitudes.

²Theoretical values of $\langle |L| \rangle$, $\langle L^2 \rangle$ for acentric reflections are 0.5, 0.333 respectively for untwinned datasets, and 0.375, 0.2 for perfectly twinned datasets.

5 Model quality

5.1 Standard geometry

Bond lengths and bond angles in the following residue types are not validated in this section: ZN, 2C6

The Z score for a bond length (or angle) is the number of standard deviations the observed value is removed from the expected value. A bond length (or angle) with $|Z| > 5$ is considered an outlier worth inspection. RMSZ is the root-mean-square of all Z scores of the bond lengths (or angles).

Mol	Chain	Bond lengths		Bond angles	
		RMSZ	$\# Z > 5$	RMSZ	$\# Z > 5$
1	A	0.57	1/1730 (0.1%)	0.79	7/2327 (0.3%)
1	B	0.55	1/1660 (0.1%)	0.70	1/2230 (0.0%)
All	All	0.56	2/3390 (0.1%)	0.75	8/4557 (0.2%)

All (2) bond length outliers are listed below:

Mol	Chain	Res	Type	Atoms	Z	Observed(Å)	Ideal(Å)
1	B	1160	GLU	CG-CD	6.43	1.61	1.51
1	A	1180	ARG	CZ-NH1	-5.50	1.25	1.33

All (8) bond angle outliers are listed below:

Mol	Chain	Res	Type	Atoms	Z	Observed(°)	Ideal(°)
1	A	1180	ARG	NE-CZ-NH1	-8.57	116.01	120.30
1	A	1314	GLU	CB-CG-CD	7.95	135.65	114.20
1	A	1253	ARG	NE-CZ-NH1	7.45	124.03	120.30
1	A	1253	ARG	CG-CD-NE	-6.91	97.28	111.80
1	A	1168	GLU	CB-CG-CD	-6.30	97.20	114.20
1	A	1180	ARG	NE-CZ-NH2	6.25	123.43	120.30
1	A	1180	ARG	CD-NE-CZ	5.86	131.80	123.60
1	B	1265	THR	N-CA-C	5.20	125.03	111.00

There are no chirality outliers.

There are no planarity outliers.

5.2 Too-close contacts

In the following table, the Non-H and H(model) columns list the number of non-hydrogen atoms and hydrogen atoms in the chain respectively. The H(added) column lists the number of hydrogen

atoms added and optimized by MolProbity. The Clashes column lists the number of clashes within the asymmetric unit, whereas Symm-Clashes lists symmetry related clashes.

Mol	Chain	Non-H	H(model)	H(added)	Clashes	Symm-Clashes
1	A	1687	0	1613	25	0
1	B	1620	0	1540	54	0
2	A	1	0	0	0	0
2	B	1	0	0	0	0
3	A	34	0	25	2	0
3	B	34	0	25	2	0
4	A	274	0	0	9	0
4	B	191	0	0	19	0
All	All	3842	0	3203	79	0

The all-atom clashscore is defined as the number of clashes found per 1000 atoms (including hydrogen atoms). The all-atom clashscore for this structure is 12.

All (79) close contacts within the same asymmetric unit are listed below, sorted by their clash magnitude.

Atom-1	Atom-2	Interatomic distance (Å)	Clash overlap (Å)
1:B:1268:MET:CE	1:B:1278:VAL:HG21	2.01	0.91
1:B:1290:ALA:O	4:B:1621:HOH:O	1.91	0.88
1:B:1267:LYS:HD2	4:B:1630:HOH:O	1.73	0.86
1:B:1289:TYR:N	4:B:1665:HOH:O	2.08	0.86
1:B:1268:MET:HE1	1:B:1278:VAL:HG21	1.57	0.86
1:B:1289:TYR:CB	4:B:1635:HOH:O	2.24	0.85
1:A:1190:ASN:HB2	4:A:1640:HOH:O	1.78	0.82
1:A:1291:GLU:OE2	4:A:1588:HOH:O	2.00	0.80
1:B:1201:HIS:CD2	4:B:1550:HOH:O	2.36	0.79
1:B:1201:HIS:HD2	4:B:1550:HOH:O	1.63	0.79
1:B:1161:ARG:HH11	1:B:1161:ARG:HB2	1.47	0.77
4:A:1532:HOH:O	1:B:1263:PHE:HE1	1.69	0.74
1:B:1114:GLU:OE2	4:B:1526:HOH:O	2.05	0.74
1:B:1161:ARG:HH11	1:B:1161:ARG:CB	2.00	0.73
1:B:1161:ARG:HH11	1:B:1161:ARG:CG	2.01	0.72
1:B:1114:GLU:HG2	4:B:1526:HOH:O	1.90	0.70
1:B:1158:LEU:HD11	1:B:1196:GLY:HA3	1.73	0.69
1:B:1268:MET:HE3	1:B:1278:VAL:HG21	1.75	0.67
1:B:1180:ARG:HD2	4:B:1521:HOH:O	1.94	0.66
1:B:1175:ASN:OD1	4:B:1602:HOH:O	2.15	0.63
1:B:1161:ARG:HH11	1:B:1161:ARG:HG3	1.63	0.62
1:B:1156:LYS:O	1:B:1160:GLU:HG3	1.99	0.61
1:B:1280:GLY:O	1:B:1290:ALA:HA	2.01	0.61

Continued on next page...

Continued from previous page...

Atom-1	Atom-2	Interatomic distance (Å)	Clash overlap (Å)
1:B:1267:LYS:N	1:B:1267:LYS:HD3	2.15	0.60
1:B:1163:CYS:SG	4:B:1513:HOH:O	2.28	0.59
1:B:1195:LYS:HB2	3:B:1402:2C6:H7	1.83	0.59
1:B:1216:GLU:HG3	1:B:1292:TYR:HE2	1.66	0.58
1:B:1114:GLU:CG	4:B:1526:HOH:O	2.50	0.58
1:A:1270:HIS:HD2	4:A:1539:HOH:O	1.86	0.58
1:B:1123:GLU:HG3	4:B:1643:HOH:O	2.03	0.58
1:B:1161:ARG:HB2	1:B:1161:ARG:NH1	2.19	0.57
1:A:1166:GLN:HG3	1:A:1177:HIS:HB2	1.87	0.56
1:A:1253:ARG:HG2	1:A:1303:GLU:HG3	1.88	0.56
1:A:1253:ARG:HG3	1:A:1303:GLU:HG2	1.89	0.55
1:B:1238:LYS:HD3	4:B:1589:HOH:O	2.06	0.55
1:B:1128:THR:HB	1:B:1217:ASN:HA	1.88	0.55
1:B:1156:LYS:HG3	4:B:1629:HOH:O	2.05	0.55
1:B:1252:CYS:HB3	1:B:1301:TYR:O	2.06	0.55
1:B:1161:ARG:HD3	1:B:1298:GLU:HG3	1.88	0.54
1:B:1207:MET:CB	4:B:1599:HOH:O	2.56	0.52
1:B:1180:ARG:CD	4:B:1521:HOH:O	2.54	0.52
1:A:1170:SER:OG	1:A:1177:HIS:HB3	2.10	0.51
1:A:1201:HIS:HE1	4:A:1592:HOH:O	1.92	0.51
1:B:1265:THR:CB	4:B:1679:HOH:O	2.59	0.50
1:A:1253:ARG:CG	1:A:1303:GLU:CG	2.90	0.50
1:B:1158:LEU:HD12	1:B:1161:ARG:NH2	2.27	0.49
1:B:1161:ARG:HG3	1:B:1161:ARG:NH1	2.29	0.48
1:A:1167:LYS:O	1:A:1171:GLU:HG3	2.13	0.47
1:A:1253:ARG:CG	1:A:1303:GLU:HG2	2.44	0.47
1:A:1105:GLY:N	4:A:1689:HOH:O	2.47	0.47
4:A:1532:HOH:O	1:B:1263:PHE:CE1	2.55	0.46
1:A:1179:GLU:OE2	1:A:1253:ARG:NH2	2.48	0.46
1:B:1161:ARG:CB	1:B:1161:ARG:NH1	2.74	0.46
1:B:1208:PHE:CE2	1:B:1228:ILE:HD12	2.50	0.46
1:A:1192:ILE:HD13	1:A:1197:PHE:CE1	2.51	0.46
1:A:1201:HIS:HD2	4:A:1597:HOH:O	1.99	0.46
1:A:1253:ARG:CG	1:A:1303:GLU:HG3	2.46	0.46
1:B:1248:GLN:HA	1:B:1306:ILE:O	2.16	0.46
1:A:1128:THR:HB	1:A:1217:ASN:HA	1.97	0.45
1:A:1215:ALA:HB2	3:A:1402:2C6:H2	1.99	0.45
1:A:1252:CYS:HB3	1:A:1301:TYR:O	2.17	0.45
1:B:1133:ARG:HG3	4:B:1624:HOH:O	2.17	0.44
1:B:1161:ARG:CG	1:B:1161:ARG:NH1	2.69	0.44
1:A:1201:HIS:CE1	4:A:1592:HOH:O	2.70	0.44

Continued on next page...

Continued from previous page...

Atom-1	Atom-2	Interatomic distance (Å)	Clash overlap (Å)
1:A:1215:ALA:HB2	3:A:1402:2C6:H3	2.00	0.43
1:B:1122:GLU:HG3	1:B:1147:VAL:HG21	2.01	0.43
1:A:1166:GLN:HG3	1:A:1177:HIS:CB	2.48	0.43
1:B:1263:PHE:CD1	1:B:1263:PHE:N	2.86	0.43
1:B:1298:GLU:H	1:B:1298:GLU:CD	2.21	0.43
1:B:1260:PHE:CG	1:B:1272:PRO:HG2	2.54	0.43
1:A:1158:LEU:HD11	1:A:1196:GLY:CA	2.50	0.42
1:B:1215:ALA:HB2	3:B:1402:2C6:H3	2.01	0.42
1:B:1258:LYS:HG2	1:B:1275:HIS:CD2	2.55	0.42
1:B:1259:SER:HB3	1:B:1279:ILE:HG13	2.02	0.41
1:B:1179:GLU:HA	1:B:1254:VAL:O	2.20	0.41
1:A:1281:ARG:HG3	1:A:1281:ARG:HH11	1.87	0.40
1:B:1180:ARG:NH2	1:B:1216:GLU:OE2	2.49	0.40
1:A:1280:GLY:O	1:A:1290:ALA:HA	2.22	0.40
1:B:1157:LYS:HA	1:B:1160:GLU:HG3	2.03	0.40

There are no symmetry-related clashes.

5.3 Torsion angles [i](#)

5.3.1 Protein backbone [i](#)

In the following table, the Percentiles column shows the percent Ramachandran outliers of the chain as a percentile score with respect to all X-ray entries followed by that with respect to entries of similar resolution.

The Analysed column shows the number of residues for which the backbone conformation was analysed, and the total number of residues.

Mol	Chain	Analysed	Favoured	Allowed	Outliers	Percentiles	
1	A	209/217 (96%)	207 (99%)	2 (1%)	0	100	100
1	B	198/217 (91%)	193 (98%)	4 (2%)	1 (0%)	32	17
All	All	407/434 (94%)	400 (98%)	6 (2%)	1 (0%)	51	35

All (1) Ramachandran outliers are listed below:

Mol	Chain	Res	Type
1	B	1265	THR

5.3.2 Protein sidechains

In the following table, the Percentiles column shows the percent sidechain outliers of the chain as a percentile score with respect to all X-ray entries followed by that with respect to entries of similar resolution.

The Analysed column shows the number of residues for which the sidechain conformation was analysed, and the total number of residues.

Mol	Chain	Analysed	Rotameric	Outliers	Percentiles	
1	A	176/185 (95%)	174 (99%)	2 (1%)	78	72
1	B	168/185 (91%)	163 (97%)	5 (3%)	46	30
All	All	344/370 (93%)	337 (98%)	7 (2%)	60	48

All (7) residues with a non-rotameric sidechain are listed below:

Mol	Chain	Res	Type
1	A	1110	ASP
1	A	1158	LEU
1	B	1110	ASP
1	B	1152	LYS
1	B	1161	ARG
1	B	1262	GLN
1	B	1263	PHE

Some sidechains can be flipped to improve hydrogen bonding and reduce clashes. All (11) such sidechains are listed below:

Mol	Chain	Res	Type
1	A	1143	ASN
1	A	1166	GLN
1	A	1173	ASN
1	A	1178	ASN
1	A	1201	HIS
1	A	1270	HIS
1	B	1174	HIS
1	B	1175	ASN
1	B	1178	ASN
1	B	1201	HIS
1	B	1223	GLN

5.3.3 RNA

There are no RNA molecules in this entry.

5.4 Non-standard residues in protein, DNA, RNA chains [i](#)

There are no non-standard protein/DNA/RNA residues in this entry.

5.5 Carbohydrates [i](#)

There are no carbohydrates in this entry.

5.6 Ligand geometry [i](#)

Of 4 ligands modelled in this entry, 2 are monoatomic - leaving 2 for Mogul analysis.

In the following table, the Counts columns list the number of bonds (or angles) for which Mogul statistics could be retrieved, the number of bonds (or angles) that are observed in the model and the number of bonds (or angles) that are defined in the chemical component dictionary. The Link column lists molecule types, if any, to which the group is linked. The Z score for a bond length (or angle) is the number of standard deviations the observed value is removed from the expected value. A bond length (or angle) with $|Z| > 2$ is considered an outlier worth inspection. RMSZ is the root-mean-square of all Z scores of the bond lengths (or angles).

Mol	Type	Chain	Res	Link	Bond lengths			Bond angles		
					Counts	RMSZ	$\# Z > 2$	Counts	RMSZ	$\# Z > 2$
3	2C6	A	1402	-	33,38,38	2.61	15 (45%)	40,52,52	2.81	8 (20%)
3	2C6	B	1402	-	33,38,38	2.68	14 (42%)	40,52,52	2.77	9 (22%)

In the following table, the Chirals column lists the number of chiral outliers, the number of chiral centers analysed, the number of these observed in the model and the number defined in the chemical component dictionary. Similar counts are reported in the Torsion and Rings columns. '-' means no outliers of that kind were identified.

Mol	Type	Chain	Res	Link	Chirals	Torsions	Rings
3	2C6	A	1402	-	-	0/12/28/28	0/4/5/5
3	2C6	B	1402	-	-	0/12/28/28	0/4/5/5

All (29) bond length outliers are listed below:

Mol	Chain	Res	Type	Atoms	Z	Observed(Å)	Ideal(Å)
3	A	1402	2C6	C18-C5	-2.74	1.45	1.50
3	A	1402	2C6	C11-C10	2.48	1.46	1.41
3	B	1402	2C6	C11-C10	2.50	1.46	1.41
3	A	1402	2C6	C8-N1	2.68	1.38	1.34
3	B	1402	2C6	C8-N1	2.94	1.38	1.34
3	A	1402	2C6	C9-N1	3.00	1.38	1.33

Continued on next page...

Continued from previous page...

Mol	Chain	Res	Type	Atoms	Z	Observed(Å)	Ideal(Å)
3	A	1402	2C6	C17-C7	3.02	1.47	1.41
3	B	1402	2C6	C17-C7	3.11	1.47	1.41
3	A	1402	2C6	C23-C22	3.25	1.45	1.38
3	B	1402	2C6	C9-N1	3.52	1.39	1.33
3	B	1402	2C6	C23-C22	3.56	1.46	1.38
3	A	1402	2C6	C24-C23	3.66	1.46	1.38
3	B	1402	2C6	C21-C20	3.68	1.47	1.39
3	B	1402	2C6	C24-C23	3.73	1.47	1.38
3	A	1402	2C6	C22-C21	3.74	1.46	1.38
3	A	1402	2C6	C25-C20	4.01	1.47	1.39
3	B	1402	2C6	C15-C16	4.16	1.48	1.38
3	A	1402	2C6	C21-C20	4.18	1.48	1.39
3	B	1402	2C6	C15-C11	4.20	1.46	1.36
3	B	1402	2C6	C22-C21	4.24	1.47	1.38
3	A	1402	2C6	C16-C17	4.27	1.46	1.36
3	A	1402	2C6	C15-C16	4.29	1.48	1.38
3	B	1402	2C6	C25-C20	4.33	1.48	1.39
3	A	1402	2C6	C15-C11	4.58	1.47	1.36
3	A	1402	2C6	C24-C25	4.61	1.47	1.38
3	B	1402	2C6	C16-C17	4.65	1.47	1.36
3	A	1402	2C6	C10-C7	4.91	1.51	1.41
3	B	1402	2C6	C24-C25	5.18	1.48	1.38
3	B	1402	2C6	C10-C7	5.37	1.52	1.41

All (17) bond angle outliers are listed below:

Mol	Chain	Res	Type	Atoms	Z	Observed(°)	Ideal(°)
3	B	1402	2C6	C10-C9-N1	-8.92	118.16	124.45
3	A	1402	2C6	C10-C9-N1	-8.56	118.41	124.45
3	A	1402	2C6	C10-C7-N2	-7.76	119.25	123.67
3	B	1402	2C6	C10-C7-N2	-6.54	119.94	123.67
3	A	1402	2C6	C2-N3-C14	-6.42	113.56	122.86
3	B	1402	2C6	C2-N3-C14	-5.67	114.65	122.86
3	B	1402	2C6	N2-C8-N1	-4.53	118.71	126.82
3	A	1402	2C6	N2-C8-N1	-3.95	119.75	126.82
3	A	1402	2C6	C9-C10-C7	-3.61	115.43	118.51
3	B	1402	2C6	C9-C10-C7	-3.43	115.58	118.51
3	B	1402	2C6	C3-C2-N3	-2.30	106.38	110.53
3	B	1402	2C6	C11-C10-C7	2.10	120.76	117.59
3	A	1402	2C6	C6-C5-C4	2.40	114.54	109.45
3	B	1402	2C6	C20-C19-N5	2.52	127.52	124.20
3	A	1402	2C6	C20-C19-N5	2.77	127.85	124.20

Continued on next page...

Continued from previous page...

Mol	Chain	Res	Type	Atoms	Z	Observed(°)	Ideal(°)
3	A	1402	2C6	C9-N1-C8	7.70	124.62	115.79
3	B	1402	2C6	C9-N1-C8	8.13	125.11	115.79

There are no chirality outliers.

There are no torsion outliers.

There are no ring outliers.

2 monomers are involved in 4 short contacts:

Mol	Chain	Res	Type	Clashes	Symm-Clashes
3	A	1402	2C6	2	0
3	B	1402	2C6	2	0

5.7 Other polymers [i](#)

There are no such residues in this entry.

5.8 Polymer linkage issues [i](#)

There are no chain breaks in this entry.

6 Fit of model and data

6.1 Protein, DNA and RNA chains

In the following table, the column labelled ‘#RSRZ > 2’ contains the number (and percentage) of RSRZ outliers, followed by percent RSRZ outliers for the chain as percentile scores relative to all X-ray entries and entries of similar resolution. The OWAB column contains the minimum, median, 95th percentile and maximum values of the occupancy-weighted average B-factor per residue. The column labelled ‘Q < 0.9’ lists the number of (and percentage) of residues with an average occupancy less than 0.9.

Mol	Chain	Analysed	<RSRZ>	#RSRZ>2	OWAB(Å ²)	Q<0.9
1	A	211/217 (97%)	0.22	6 (2%) 53 48	13, 19, 30, 36	0
1	B	202/217 (93%)	0.19	15 (7%) 15 12	15, 23, 34, 41	0
All	All	413/434 (95%)	0.20	21 (5%) 29 24	13, 21, 33, 41	0

All (21) RSRZ outliers are listed below:

Mol	Chain	Res	Type	RSRZ
1	B	1289	TYR	9.8
1	B	1263	PHE	9.2
1	B	1264	SER	7.1
1	B	1265	THR	5.5
1	B	1133	ARG	4.7
1	B	1266	MET	4.2
1	A	1131	GLU	4.0
1	A	1284	VAL	3.9
1	B	1262	GLN	2.8
1	B	1105	GLY	2.7
1	A	1285	ASN	2.7
1	A	1315	HIS	2.7
1	A	1177	HIS	2.6
1	B	1290	ALA	2.5
1	B	1116	LYS	2.4
1	B	1314	GLU	2.4
1	A	1174	HIS	2.3
1	B	1156	LYS	2.3
1	B	1131	GLU	2.1
1	B	1115	ASP	2.0
1	B	1238	LYS	2.0

6.2 Non-standard residues in protein, DNA, RNA chains [i](#)

There are no non-standard protein/DNA/RNA residues in this entry.

6.3 Carbohydrates [i](#)

There are no carbohydrates in this entry.

6.4 Ligands [i](#)

In the following table, the Atoms column lists the number of modelled atoms in the group and the number defined in the chemical component dictionary. LLDF column lists the quality of electron density of the group with respect to its neighbouring residues in protein, DNA or RNA chains. The B-factors column lists the minimum, median, 95th percentile and maximum values of B factors of atoms in the group. The column labelled 'Q< 0.9' lists the number of atoms with occupancy less than 0.9.

Mol	Type	Chain	Res	Atoms	RSCC	RSR	LLDF	B-factors(\AA^2)	Q<0.9
3	2C6	A	1402	34/34	0.90	0.16	1.04	13,15,18,28	0
2	ZN	A	1401	1/1	0.99	0.10	0.76	24,24,24,24	0
3	2C6	B	1402	34/34	0.93	0.11	0.11	18,19,22,30	0
2	ZN	B	1401	1/1	0.99	0.03	-2.61	23,23,23,23	0

6.5 Other polymers [i](#)

There are no such residues in this entry.