



Full wwPDB X-ray Structure Validation Report ⓘ

Jan 8, 2018 – 11:03 PM EST

PDB ID : 5MSA
Title : Crystal structure of human carbonic anhydrase isozyme XII with 2,3,5,6-Tetrafluoro-4-(propylthio)benzenesulfonamide
Authors : Smirnov, A.; Manakova, E.; Grazulis, S.
Deposited on : 2017-01-02
Resolution : 1.20 Å(reported)

This is a Full wwPDB X-ray Structure Validation Report for a publicly released PDB entry.

We welcome your comments at validation@mail.wwpdb.org

A user guide is available at

<http://wwpdb.org/validation/2016/XrayValidationReportHelp>

with specific help available everywhere you see the ⓘ symbol.

The following versions of software and data (see [references ⓘ](#)) were used in the production of this report:

MolProbity : 4.02b-467
Mogul : 1.7.2 (RC1), CSD as538be (2017)
Xtriage (Phenix) : 1.9-1692
EDS : rb-20030736
Percentile statistics : 20161228.v01 (using entries in the PDB archive December 28th 2016)
Refmac : 5.8.0135
CCP4 : 6.5.0
Ideal geometry (proteins) : Engh & Huber (2001)
Ideal geometry (DNA, RNA) : Parkinson et al. (1996)
Validation Pipeline (wwPDB-VP) : rb-20030736

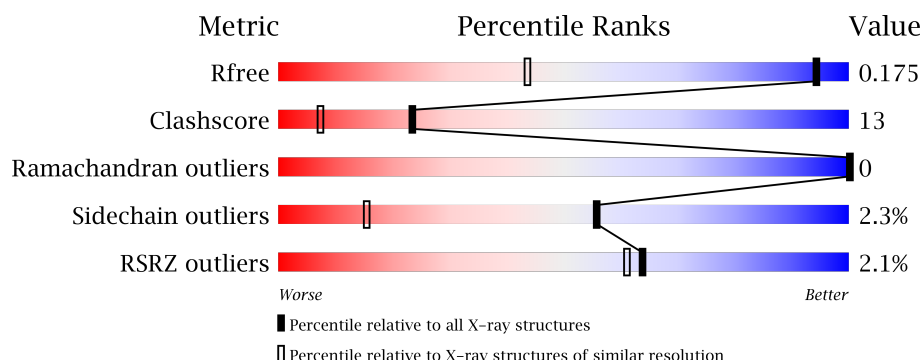
1 Overall quality at a glance

The following experimental techniques were used to determine the structure:

X-RAY DIFFRACTION

The reported resolution of this entry is 1.20 Å.

Percentile scores (ranging between 0-100) for global validation metrics of the entry are shown in the following graphic. The table shows the number of entries on which the scores are based.



Metric	Whole archive (#Entries)	Similar resolution (#Entries, resolution range(Å))
R_{free}	100719	1131 (1.24-1.16)
Clashscore	112137	1201 (1.24-1.16)
Ramachandran outliers	110173	1148 (1.24-1.16)
Sidechain outliers	110143	1147 (1.24-1.16)
RSRZ outliers	101464	1132 (1.24-1.16)

The table below summarises the geometric issues observed across the polymeric chains and their fit to the electron density. The red, orange, yellow and green segments on the lower bar indicate the fraction of residues that contain outliers for ≥ 3 , 2, 1 and 0 types of geometric quality criteria. A grey segment represents the fraction of residues that are not modelled. The numeric value for each fraction is indicated below the corresponding segment, with a dot representing fractions $\leq 5\%$. The upper red bar (where present) indicates the fraction of residues that have poor fit to the electron density. The numeric value is given above the bar.

Mol	Chain	Length	Quality of chain
1	A	263	<div> <div>84%</div> <div>14%</div> <div>.</div> </div>
1	B	263	<div> <div>2%</div> <div>89%</div> <div>8%</div> <div>..</div> </div>
1	C	263	<div> <div>4%</div> <div>88%</div> <div>11%</div> <div>.</div> </div>
1	D	263	<div> <div>2%</div> <div>85%</div> <div>13%</div> <div>..</div> </div>

The following table lists non-polymeric compounds, carbohydrate monomers and non-standard residues in protein, DNA, RNA chains that are outliers for geometric or electron-density-fit crite-

ria:

Mol	Type	Chain	Res	Chirality	Geometry	Clashes	Electron density
3	3TV	A	302[A]	-	-	-	X
3	3TV	A	302[B]	-	-	X	X
3	3TV	B	302[A]	-	-	-	X
3	3TV	B	302[B]	-	-	-	X
3	3TV	C	302	-	-	-	X
3	3TV	D	302[A]	-	-	X	X
3	3TV	D	302[B]	-	-	X	X
4	EDO	A	303	-	-	-	X
4	EDO	A	304	-	-	-	X
4	EDO	A	305	-	-	-	X
4	EDO	A	307	-	-	X	X
4	EDO	A	308	-	-	-	X
4	EDO	A	309	-	-	-	X
4	EDO	B	303	-	-	-	X
4	EDO	C	303	-	-	-	X
4	EDO	C	305	-	-	-	X
4	EDO	D	305	-	-	-	X
4	EDO	D	307	-	-	-	X
5	PEG	B	304	-	-	-	X
5	PEG	C	304	-	-	X	X
6	CIT	B	305	-	-	X	-
6	CIT	D	304	-	-	X	X
6	CIT	D	306	-	-	X	-

2 Entry composition

There are 7 unique types of molecules in this entry. The entry contains 10456 atoms, of which 0 are hydrogens and 0 are deuteriums.

In the tables below, the ZeroOcc column contains the number of atoms modelled with zero occupancy, the AltConf column contains the number of residues with at least one atom in alternate conformation and the Trace column contains the number of residues modelled with at most 2 atoms.

- Molecule 1 is a protein called Carbonic anhydrase 12.

Mol	Chain	Residues	Atoms					ZeroOcc	AltConf	Trace
1	A	261	Total	C	N	O	S	0	16	0
			2210	1400	378	423	9			
1	B	261	Total	C	N	O	S	0	15	0
			2197	1390	375	424	8			
1	C	262	Total	C	N	O	S	0	8	0
			2125	1352	359	405	9			
1	D	261	Total	C	N	O	S	0	18	0
			2237	1417	382	431	7			

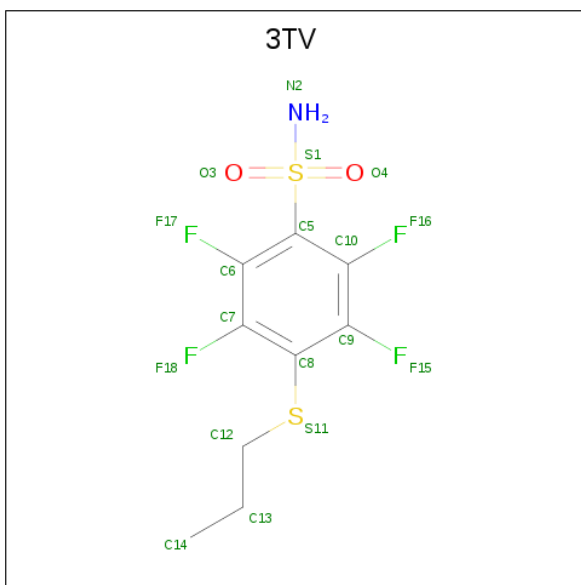
There are 4 discrepancies between the modelled and reference sequences:

Chain	Residue	Modelled	Actual	Comment	Reference
A	1	MET	-	initiating methionine	UNP O43570
B	1	MET	-	initiating methionine	UNP O43570
C	1	MET	-	initiating methionine	UNP O43570
D	1	MET	-	initiating methionine	UNP O43570

- Molecule 2 is ZINC ION (three-letter code: ZN) (formula: Zn).

Mol	Chain	Residues	Atoms		ZeroOcc	AltConf
2	B	1	Total	Zn	0	0
			1	1		
2	A	1	Total	Zn	0	0
			1	1		
2	D	1	Total	Zn	0	0
			1	1		
2	C	1	Total	Zn	0	0
			1	1		

- Molecule 3 is 2,3,5,6-tetrafluoro-4-(propylsulfanyl)benzenesulfonamide (three-letter code: 3TV) (formula: C₉H₉F₄NO₂S₂).



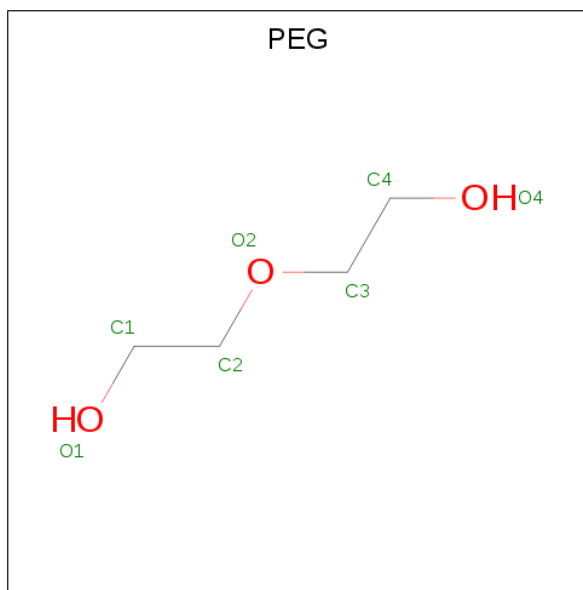
Mol	Chain	Residues	Atoms						ZeroOcc	AltConf
3	A	1	Total	C	F	N	O	S	0	1
			36	18	8	2	4	4		
3	B	1	Total	C	F	N	O	S	0	1
			36	18	8	2	4	4		
3	C	1	Total	C	F	N	O	S	0	0
			18	9	4	1	2	2		
3	D	1	Total	C	F	N	O	S	0	1
			36	18	8	2	4	4		

- Molecule 4 is 1,2-ETHANEDIOL (three-letter code: EDO) (formula: C₂H₆O₂).



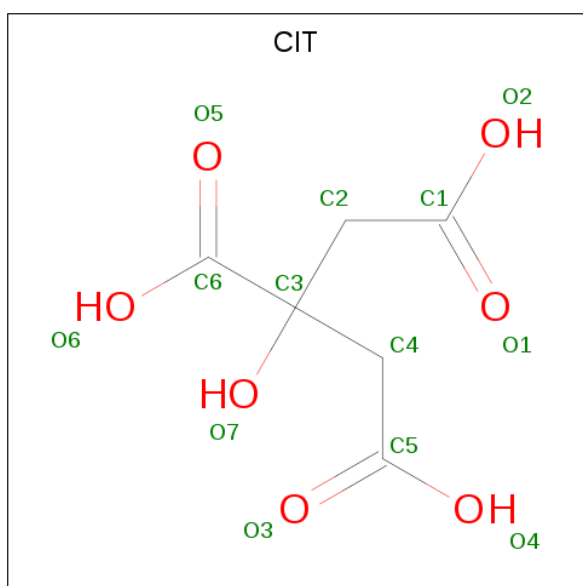
Mol	Chain	Residues	Atoms	ZeroOcc	AltConf
4	A	1	Total C O 4 2 2	0	0
4	A	1	Total C O 4 2 2	0	0
4	A	1	Total C O 4 2 2	0	0
4	A	1	Total C O 4 2 2	0	0
4	A	1	Total C O 4 2 2	0	0
4	A	1	Total C O 4 2 2	0	0
4	A	1	Total C O 4 2 2	0	0
4	B	1	Total C O 4 2 2	0	0
4	C	1	Total C O 4 2 2	0	0
4	C	1	Total C O 4 2 2	0	0
4	D	1	Total C O 4 2 2	0	0
4	D	1	Total C O 4 2 2	0	0

- Molecule 5 is DI(HYDROXYETHYL)ETHER (three-letter code: PEG) (formula: C₄H₁₀O₃).



Mol	Chain	Residues	Atoms	ZeroOcc	AltConf
5	A	1	Total C O 7 4 3	0	0
5	B	1	Total C O 7 4 3	0	0
5	C	1	Total C O 7 4 3	0	0
5	D	1	Total C O 7 4 3	0	0

- Molecule 6 is CITRIC ACID (three-letter code: CIT) (formula: $C_6H_8O_7$).



Mol	Chain	Residues	Atoms	ZeroOcc	AltConf
6	B	1	Total C O 13 6 7	0	0
6	D	1	Total C O 13 6 7	0	0
6	D	1	Total C O 13 6 7	0	0

- Molecule 7 is water.

Mol	Chain	Residues	Atoms	ZeroOcc	AltConf
7	A	380	Total O 380 380	0	0
7	B	381	Total O 381 381	0	0
7	C	314	Total O 314 314	0	0

Continued on next page...

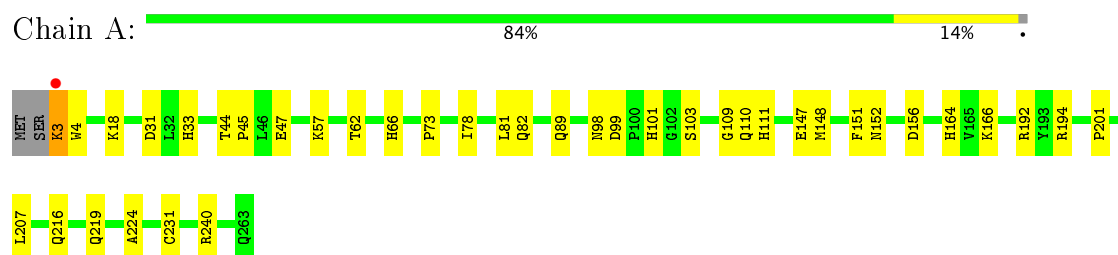
Continued from previous page...

Mol	Chain	Residues	Atoms		ZeroOcc	AltConf
7	D	367	Total	O	0	0
			367	367		

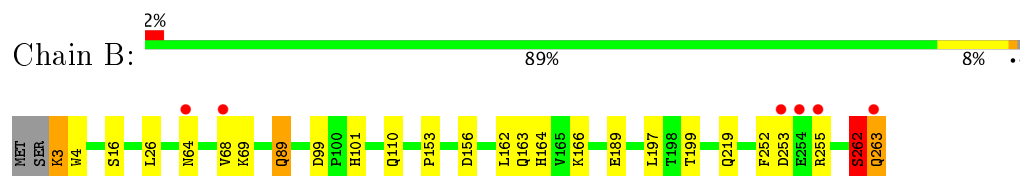
3 Residue-property plots [i](#)

These plots are drawn for all protein, RNA and DNA chains in the entry. The first graphic for a chain summarises the proportions of the various outlier classes displayed in the second graphic. The second graphic shows the sequence view annotated by issues in geometry and electron density. Residues are color-coded according to the number of geometric quality criteria for which they contain at least one outlier: green = 0, yellow = 1, orange = 2 and red = 3 or more. A red dot above a residue indicates a poor fit to the electron density ($RSRZ > 2$). Stretches of 2 or more consecutive residues without any outlier are shown as a green connector. Residues present in the sample, but not in the model, are shown in grey.

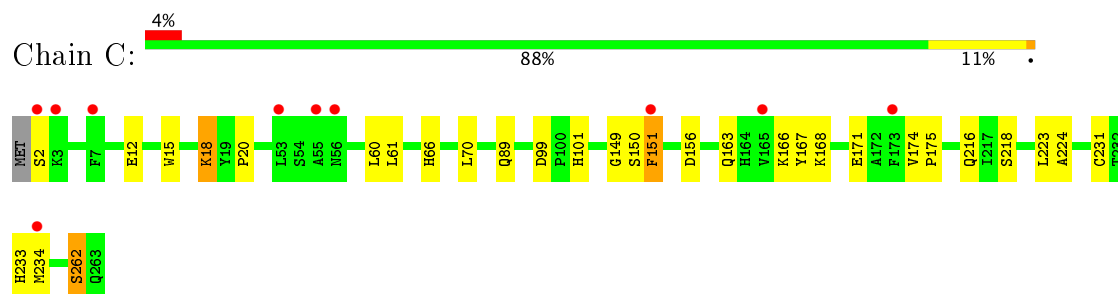
• Molecule 1: Carbonic anhydrase 12



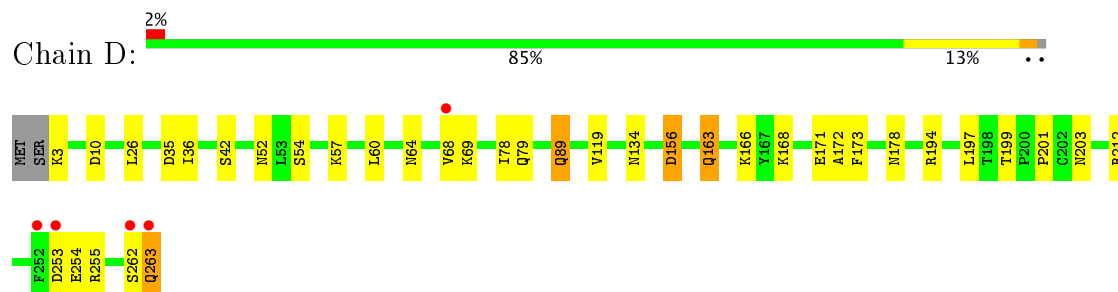
• Molecule 1: Carbonic anhydrase 12



• Molecule 1: Carbonic anhydrase 12



• Molecule 1: Carbonic anhydrase 12



4 Data and refinement statistics

Property	Value	Source
Space group	P 1 21 1	Depositor
Cell constants a, b, c, α , β , γ	77.17Å 74.16Å 91.56Å 90.00° 108.85° 90.00°	Depositor
Resolution (Å)	67.64 – 1.20 67.64 – 1.20	Depositor EDS
% Data completeness (in resolution range)	97.0 (67.64-1.20) 97.0 (67.64-1.20)	Depositor EDS
R_{merge}	(Not available)	Depositor
R_{sym}	0.06	Depositor
$\langle I/\sigma(I) \rangle$ ¹	6.54 (at 1.20Å)	Xtriage
Refinement program	REFMAC 5.6.0117	Depositor
R, R_{free}	0.141 , 0.178 0.136 , 0.175	Depositor DCC
R_{free} test set	29410 reflections (11.08%)	DCC
Wilson B-factor (Å ²)	11.5	Xtriage
Anisotropy	0.085	Xtriage
Bulk solvent k_{sol} (e/Å ³), B_{sol} (Å ²)	0.34 , 51.2	EDS
L-test for twinning ²	$\langle L \rangle = 0.48$, $\langle L^2 \rangle = 0.31$	Xtriage
Estimated twinning fraction	No twinning to report.	Xtriage
F_o, F_c correlation	0.98	EDS
Total number of atoms	10456	wwPDB-VP
Average B, all atoms (Å ²)	19.0	wwPDB-VP

Xtriage's analysis on translational NCS is as follows: *The analyses of the Patterson function reveals a significant off-origin peak that is 41.40 % of the origin peak, indicating pseudo translational symmetry. The chance of finding a peak of this or larger height randomly in a structure without pseudo translational symmetry is equal to 2.3745e-04. The detected translational NCS is most likely also responsible for the elevated intensity ratio.*

¹Intensities estimated from amplitudes.

²Theoretical values of $\langle |L| \rangle$, $\langle L^2 \rangle$ for acentric reflections are 0.5, 0.333 respectively for untwinned datasets, and 0.375, 0.2 for perfectly twinned datasets.

5 Model quality [i](#)

5.1 Standard geometry [i](#)

Bond lengths and bond angles in the following residue types are not validated in this section: PEG, ZN, CIT, EDO, 3TV

The Z score for a bond length (or angle) is the number of standard deviations the observed value is removed from the expected value. A bond length (or angle) with $|Z| > 5$ is considered an outlier worth inspection. RMSZ is the root-mean-square of all Z scores of the bond lengths (or angles).

Mol	Chain	Bond lengths		Bond angles	
		RMSZ	$\# Z > 5$	RMSZ	$\# Z > 5$
1	A	0.98	0/2277	0.98	0/3097
1	B	1.03	0/2264	1.04	0/3081
1	C	1.08	0/2188	1.09	0/2981
1	D	1.03	0/2303	1.05	1/3135 (0.0%)
All	All	1.03	0/9032	1.04	1/12294 (0.0%)

Chiral center outliers are detected by calculating the chiral volume of a chiral center and verifying if the center is modelled as a planar moiety or with the opposite hand. A planarity outlier is detected by checking planarity of atoms in a peptide group, atoms in a mainchain group or atoms of a sidechain that are expected to be planar.

Mol	Chain	#Chirality outliers	#Planarity outliers
1	B	0	1

There are no bond length outliers.

All (1) bond angle outliers are listed below:

Mol	Chain	Res	Type	Atoms	Z	Observed($^{\circ}$)	Ideal($^{\circ}$)
1	D	262	SER	C-N-CA	6.14	137.04	121.70

There are no chirality outliers.

All (1) planarity outliers are listed below:

Mol	Chain	Res	Type	Group
1	B	262	SER	Peptide

5.2 Too-close contacts ⓘ

In the following table, the Non-H and H(model) columns list the number of non-hydrogen atoms and hydrogen atoms in the chain respectively. The H(added) column lists the number of hydrogen atoms added and optimized by MolProbity. The Clashes column lists the number of clashes within the asymmetric unit, whereas Symm-Clashes lists symmetry related clashes.

Mol	Chain	Non-H	H(model)	H(added)	Clashes	Symm-Clashes
1	A	2210	0	2082	48	0
1	B	2197	0	2053	60	0
1	C	2125	0	1996	33	0
1	D	2237	0	2099	56	0
2	A	1	0	0	0	0
2	B	1	0	0	0	0
2	C	1	0	0	0	0
2	D	1	0	0	0	0
3	A	36	0	18	6	0
3	B	36	0	18	5	0
3	C	18	0	9	1	0
3	D	36	0	17	18	0
4	A	28	0	41	9	0
4	B	4	0	6	0	0
4	C	8	0	10	3	0
4	D	8	0	11	2	0
5	A	7	0	10	2	0
5	B	7	0	10	2	0
5	C	7	0	10	5	0
5	D	7	0	10	2	0
6	B	13	0	5	19	0
6	D	26	0	10	35	0
7	A	380	0	0	26	0
7	B	381	0	0	16	0
7	C	314	0	0	5	0
7	D	367	0	0	12	0
All	All	10456	0	8415	222	0

The all-atom clashscore is defined as the number of clashes found per 1000 atoms (including hydrogen atoms). The all-atom clashscore for this structure is 13.

All (222) close contacts within the same asymmetric unit are listed below, sorted by their clash magnitude.

Atom-1	Atom-2	Interatomic distance (Å)	Clash overlap (Å)
1:A:18[A]:LYS:HE2	7:A:672:HOH:O	1.32	1.30

Continued on next page...

Continued from previous page...

Atom-1	Atom-2	Interatomic distance (Å)	Clash overlap (Å)
3:D:302[A]:3TV:H7	6:D:306:CIT:O6	1.43	1.15
1:C:262:SER:HB3	7:C:608:HOH:O	1.50	1.09
1:D:201[A]:PRO:HG2	6:D:304:CIT:H21	1.31	1.08
1:D:69:LYS:HD3	6:D:306:CIT:H42	1.29	1.07
5:B:304:PEG:H21	7:B:663:HOH:O	1.54	1.06
1:B:69:LYS:HZ3	6:B:305:CIT:H22	1.15	1.06
1:B:64:ASN:HD22	6:B:305:CIT:H21	1.20	1.05
3:D:302[A]:3TV:C14	6:D:306:CIT:O6	2.06	1.03
1:B:252:PHE:CZ	1:B:255:ARG:HB3	1.92	1.03
1:B:69:LYS:HD3	6:B:305:CIT:H42	1.38	1.01
3:D:302[B]:3TV:S11	6:D:306:CIT:O6	2.22	0.97
1:C:168:LYS:HB2	1:C:231[A]:CYS:O	1.64	0.96
3:A:302[B]:3TV:H6	7:A:428:HOH:O	1.63	0.95
1:D:69:LYS:CD	6:D:306:CIT:H42	1.94	0.95
1:D:201[B]:PRO:HG3	6:D:304:CIT:H21	1.50	0.92
1:B:252:PHE:CZ	1:B:255:ARG:CB	2.53	0.91
1:B:252:PHE:HE1	1:B:255:ARG:HD2	1.37	0.89
6:D:304:CIT:O7	7:D:401:HOH:O	1.68	0.88
1:B:69:LYS:CD	6:B:305:CIT:H42	2.03	0.88
1:B:252:PHE:CE1	1:B:255:ARG:HD2	2.07	0.88
1:A:219[B]:GLN:OE1	7:A:401:HOH:O	1.92	0.86
1:B:69:LYS:NZ	6:B:305:CIT:H22	1.89	0.86
1:D:69:LYS:HZ3	6:D:306:CIT:H22	1.44	0.83
1:A:18[A]:LYS:CE	7:A:672:HOH:O	2.04	0.82
1:B:69:LYS:HZ3	6:B:305:CIT:C2	1.91	0.82
1:B:252:PHE:CE1	1:B:255:ARG:CB	2.62	0.81
1:C:61[B]:LEU:HD22	1:C:174:VAL:CG2	2.11	0.81
1:D:201[A]:PRO:CG	6:D:304:CIT:H21	2.10	0.81
1:A:31:ASP:OD2	4:A:307:EDO:H21	1.81	0.80
3:A:302[B]:3TV:H1	7:A:428:HOH:O	1.81	0.80
1:A:62[B]:THR:HG21	7:A:583:HOH:O	1.81	0.79
1:D:69:LYS:HZ3	6:D:306:CIT:C2	1.93	0.79
3:B:302[B]:3TV:F17	7:B:669:HOH:O	1.91	0.78
1:D:64:ASN:HD22	6:D:306:CIT:H21	1.46	0.78
1:B:252:PHE:CE1	1:B:255:ARG:HB2	2.18	0.78
3:D:302[A]:3TV:H7	6:D:306:CIT:C6	2.13	0.78
3:A:302[B]:3TV:C14	7:A:428:HOH:O	2.22	0.78
1:D:199:THR:OG1	3:D:302[B]:3TV:F15	1.92	0.76
1:B:262:SER:HB2	1:B:263:GLN:HG2	1.68	0.75
3:D:302[A]:3TV:C12	6:D:306:CIT:O6	2.35	0.75
1:A:151:PHE:HB2	5:A:306:PEG:H12	1.69	0.74

Continued on next page...

Continued from previous page...

Atom-1	Atom-2	Interatomic distance (Å)	Clash overlap (Å)
1:B:16:SER:OG	7:B:401:HOH:O	2.03	0.74
1:D:199:THR:OG1	3:D:302[B]:3TV:F16	1.96	0.73
1:D:203[B]:ASN:ND2	6:D:304:CIT:O4	2.20	0.73
1:C:167:TYR:CD2	1:C:234:MET:HG3	2.24	0.73
1:D:255:ARG:CD	7:D:549:HOH:O	2.37	0.72
1:B:252:PHE:CE1	1:B:255:ARG:CD	2.71	0.72
3:D:302[A]:3TV:S11	6:D:306:CIT:O6	2.48	0.72
1:D:134:ASN:HB3	6:D:304:CIT:H42	1.72	0.71
1:A:194:ARG:NE	1:A:207:LEU:HD13	2.05	0.71
3:D:302[A]:3TV:H4	7:D:488:HOH:O	1.89	0.71
1:C:20[A]:PRO:CG	5:C:304:PEG:H11	2.21	0.71
1:C:18[A]:LYS:O	5:C:304:PEG:H31	1.90	0.70
1:D:163:GLN:NE2	1:D:166:LYS:NZ	2.39	0.70
1:A:224:ALA:HA	4:A:310:EDO:H21	1.73	0.69
1:C:18[B]:LYS:O	5:C:304:PEG:H31	1.92	0.69
1:B:197:LEU:HD22	3:B:302[B]:3TV:C10	2.22	0.69
1:D:42:SER:O	7:D:402:HOH:O	2.09	0.69
1:A:111:HIS:HE1	7:A:690:HOH:O	1.74	0.69
1:A:82:GLN:HG3	7:A:667:HOH:O	1.91	0.69
1:B:64:ASN:ND2	6:B:305:CIT:H21	2.02	0.67
1:C:20[A]:PRO:HG2	5:C:304:PEG:H11	1.77	0.67
1:B:3:LYS:N	7:B:405:HOH:O	2.28	0.66
1:C:151:PHE:HB2	1:C:218:SER:HB3	1.76	0.66
1:D:69:LYS:HD3	6:D:306:CIT:C4	2.18	0.66
3:A:302[B]:3TV:H3	7:A:702:HOH:O	1.95	0.66
6:B:305:CIT:O2	7:B:402:HOH:O	2.14	0.66
1:D:173:PHE:H	4:D:307:EDO:C1	2.09	0.65
1:B:163:GLN:NE2	7:B:407:HOH:O	2.30	0.65
1:D:119:VAL:HG21	3:D:302[B]:3TV:F17	1.86	0.65
1:B:252:PHE:CZ	1:B:255:ARG:HB2	2.29	0.64
1:D:199:THR:OG1	3:D:302[B]:3TV:C9	2.46	0.64
1:A:164:HIS:HD2	7:A:444:HOH:O	1.81	0.64
1:D:64:ASN:HD22	6:D:306:CIT:C2	2.12	0.63
1:A:47:GLU:HG2	7:A:686:HOH:O	1.97	0.63
1:C:60[A]:LEU:HD11	1:C:171:GLU:HB3	1.80	0.63
1:B:99:ASP:OD1	1:B:101:HIS:HD2	1.82	0.61
1:B:255:ARG:CD	7:B:539:HOH:O	2.49	0.61
1:C:61[B]:LEU:HD13	1:C:70:LEU:HD13	1.82	0.61
1:A:3:LYS:HA	7:A:627:HOH:O	2.00	0.60
1:D:78[A]:ILE:HG22	1:D:79:GLN:N	2.16	0.60
1:D:89:GLN:NE2	6:D:306:CIT:H41	2.16	0.60

Continued on next page...

Continued from previous page...

Atom-1	Atom-2	Interatomic distance (Å)	Clash overlap (Å)
1:D:89:GLN:HE21	6:D:306:CIT:H41	1.68	0.59
1:B:69:LYS:CE	6:B:305:CIT:H22	2.32	0.59
1:C:223:LEU:HD23	4:C:305:EDO:H11	1.85	0.59
1:B:197:LEU:HD22	3:B:302[B]:3TV:C9	2.34	0.58
1:B:253:ASP:HB3	7:B:442:HOH:O	2.03	0.58
1:D:255:ARG:CG	7:D:549:HOH:O	2.52	0.58
1:C:60[B]:LEU:O	1:C:70:LEU:HD12	2.03	0.58
1:C:61[B]:LEU:HD22	1:C:174:VAL:HG23	1.85	0.57
1:D:194[A]:ARG:NH2	7:D:410:HOH:O	2.36	0.57
1:D:69:LYS:NZ	6:D:306:CIT:H42	2.20	0.57
1:D:255:ARG:HG2	7:D:549:HOH:O	2.03	0.57
4:C:305:EDO:H21	7:C:426:HOH:O	2.04	0.57
1:B:69:LYS:NZ	6:B:305:CIT:H42	2.20	0.57
1:D:199:THR:OG1	3:D:302[B]:3TV:C10	2.53	0.57
1:D:163:GLN:NE2	1:D:166:LYS:HZ3	2.01	0.57
1:A:109:GLY:CA	4:A:307:EDO:H12	2.35	0.56
1:A:33:HIS:HD2	7:A:614:HOH:O	1.87	0.56
1:A:78[B]:ILE:HG22	1:A:78[B]:ILE:O	2.05	0.56
3:D:302[A]:3TV:H3	7:D:473:HOH:O	2.04	0.56
1:B:189[B]:GLU:OE1	7:B:403:HOH:O	2.18	0.56
1:B:162:LEU:C	1:B:164:HIS:H	2.10	0.56
3:D:302[A]:3TV:C14	6:D:306:CIT:O7	2.54	0.56
1:B:252:PHE:CE1	1:B:255:ARG:HB3	2.32	0.55
1:B:69:LYS:HZ2	6:B:305:CIT:C4	2.19	0.55
1:D:64:ASN:ND2	6:D:306:CIT:H21	2.18	0.55
1:B:252:PHE:CD1	1:B:255:ARG:HB2	2.42	0.55
1:B:252:PHE:HD1	1:B:255:ARG:CZ	2.20	0.54
1:B:89:GLN:NE2	6:B:305:CIT:H41	2.21	0.54
1:D:172:ALA:HB1	4:D:307:EDO:H12	1.88	0.54
1:A:57[A]:LYS:HD3	4:A:309:EDO:H11	1.90	0.54
1:B:89:GLN:HE21	6:B:305:CIT:H41	1.73	0.54
1:A:44:THR:HB	1:A:45[B]:PRO:CD	2.37	0.54
1:B:262:SER:HB2	1:B:263:GLN:CG	2.37	0.54
1:A:148[B]:MET:HE3	7:A:769:HOH:O	2.08	0.53
1:B:69:LYS:HZ2	6:B:305:CIT:C5	2.20	0.53
1:D:26:LEU:HD22	1:D:255:ARG:HD3	1.89	0.53
1:A:201:PRO:HD3	3:A:302[B]:3TV:H7	1.90	0.53
1:B:252:PHE:CD1	1:B:255:ARG:NE	2.76	0.53
1:D:134:ASN:HB3	6:D:304:CIT:C4	2.37	0.53
1:A:18[A]:LYS:CD	7:A:672:HOH:O	2.46	0.53
1:C:224:ALA:HB2	4:C:305:EDO:H22	1.90	0.53

Continued on next page...

Continued from previous page...

Atom-1	Atom-2	Interatomic distance (Å)	Clash overlap (Å)
1:B:252:PHE:CD1	1:B:255:ARG:CZ	2.92	0.52
1:C:167:TYR:CE2	1:C:234:MET:HG3	2.44	0.52
3:D:302[A]:3TV:C13	6:D:306:CIT:O6	2.55	0.52
1:D:3:LYS:HE2	1:D:10:ASP:OD2	2.09	0.52
1:B:68[B]:VAL:HG12	7:B:404:HOH:O	2.10	0.51
1:D:163:GLN:HE21	1:D:166:LYS:NZ	2.07	0.51
1:D:168:LYS:HG2	5:D:303:PEG:H32	1.90	0.51
3:B:302[A]:3TV:S11	6:B:305:CIT:O6	2.69	0.51
1:C:151:PHE:CB	1:C:218:SER:HB3	2.40	0.51
1:A:148[B]:MET:HE2	1:A:219[B]:GLN:HA	1.93	0.51
1:C:66:HIS:HD2	7:C:637:HOH:O	1.95	0.49
1:D:163:GLN:NE2	1:D:166:LYS:HZ1	2.11	0.49
1:B:252:PHE:CE2	1:B:255:ARG:C	2.85	0.49
1:A:18[A]:LYS:HG2	7:A:672:HOH:O	2.12	0.49
1:A:31:ASP:OD2	4:A:307:EDO:C2	2.56	0.49
1:D:253:ASP:O	1:D:254:GLU:HB2	2.13	0.49
1:D:54:SER:HB3	1:D:57[A]:LYS:HG3	1.95	0.48
1:B:69:LYS:HZ2	6:B:305:CIT:H42	1.76	0.48
1:B:68[B]:VAL:CG1	7:B:404:HOH:O	2.62	0.48
1:C:20[A]:PRO:HD3	5:C:304:PEG:H21	1.94	0.48
1:B:163:GLN:OE1	1:B:166[B]:LYS:NZ	2.42	0.48
1:B:69:LYS:NZ	6:B:305:CIT:C4	2.76	0.48
1:D:212:ARG:HH12	1:D:263:GLN:HB2	1.78	0.48
4:A:308:EDO:H21	7:A:522:HOH:O	2.13	0.48
1:C:149:GLY:HA3	1:C:216:GLN:OE1	2.13	0.48
1:A:98[B]:ASN:ND2	7:A:408:HOH:O	2.46	0.48
1:C:18[A]:LYS:HD2	1:C:18[A]:LYS:HA	1.64	0.47
1:D:69:LYS:NZ	6:D:306:CIT:H22	2.22	0.47
1:A:164:HIS:HE1	7:A:683:HOH:O	1.97	0.47
1:A:192:ARG:HD2	1:A:207:LEU:HD11	1.96	0.47
1:C:99:ASP:OD1	1:C:101:HIS:HD2	1.98	0.47
1:D:69:LYS:NZ	6:D:306:CIT:O3	2.41	0.47
1:D:89:GLN:HE21	6:D:306:CIT:C4	2.27	0.47
1:A:78[B]:ILE:HG21	1:A:81:LEU:HD12	1.97	0.46
1:A:110:GLN:NE2	1:B:110:GLN:NE2	2.63	0.46
1:B:162:LEU:C	1:B:164:HIS:N	2.69	0.46
1:D:69:LYS:NZ	6:D:306:CIT:C4	2.78	0.46
1:A:78[B]:ILE:HA	1:A:78[B]:ILE:HD12	1.50	0.46
1:B:153:PRO:HD3	5:B:304:PEG:H41	1.98	0.46
1:D:69:LYS:HZ3	6:D:306:CIT:C3	2.29	0.45
1:A:73:PRO:HG3	4:A:309:EDO:H21	1.98	0.45

Continued on next page...

Continued from previous page...

Atom-1	Atom-2	Interatomic distance (Å)	Clash overlap (Å)
1:D:197[B]:LEU:HD22	3:D:302[B]:3TV:C10	2.46	0.45
1:D:255:ARG:HD2	7:D:549:HOH:O	2.06	0.45
1:A:109:GLY:HA3	4:A:307:EDO:H12	1.99	0.45
1:B:252:PHE:CE2	1:B:255:ARG:CB	2.99	0.45
1:B:68[A]:VAL:CG1	7:B:404:HOH:O	2.64	0.45
1:B:255:ARG:CG	7:B:539:HOH:O	2.64	0.45
1:C:2:SER:N	1:C:18[B]:LYS:HZ3	2.15	0.45
1:D:68[A]:VAL:O	7:D:403:HOH:O	2.20	0.45
1:A:148[B]:MET:HE2	7:A:512:HOH:O	2.16	0.45
1:A:33:HIS:HE1	7:A:564:HOH:O	1.99	0.45
3:C:302:3TV:H3	3:C:302:3TV:F15	2.07	0.45
1:B:255:ARG:HG2	7:B:539:HOH:O	2.16	0.44
1:A:231[B]:CYS:SG	1:A:240:ARG:NH1	2.90	0.44
1:A:3:LYS:HG2	7:A:542:HOH:O	2.17	0.44
1:C:216:GLN:HG3	7:C:510:HOH:O	2.17	0.44
1:A:73:PRO:HG3	4:A:309:EDO:C2	2.47	0.44
1:D:89:GLN:HE21	6:D:306:CIT:C5	2.31	0.44
1:A:3:LYS:HD3	1:A:66:HIS:NE2	2.33	0.44
1:A:18[A]:LYS:CG	7:A:672:HOH:O	2.66	0.44
1:A:3:LYS:HG3	1:A:4:TRP:H	1.83	0.44
1:C:167:TYR:CG	1:C:234:MET:HA	2.53	0.43
3:A:302[B]:3TV:H6	7:A:745:HOH:O	2.17	0.43
1:D:68[B]:VAL:CG1	7:D:403:HOH:O	2.67	0.43
1:B:89:GLN:HE21	6:B:305:CIT:C4	2.31	0.43
1:C:151:PHE:HB2	1:C:218:SER:CB	2.45	0.43
1:C:61[A]:LEU:O	1:C:171:GLU:HA	2.18	0.43
1:A:151:PHE:CB	5:A:306:PEG:H12	2.46	0.43
1:C:61[B]:LEU:HD22	1:C:174:VAL:HG22	1.97	0.43
3:D:302[B]:3TV:F18	3:D:302[B]:3TV:C12	2.57	0.42
1:A:166:LYS:HB2	1:A:166:LYS:HE2	1.54	0.42
1:D:69:LYS:HZ3	6:D:306:CIT:C4	2.32	0.42
1:C:163:GLN:HA	1:C:166:LYS:HG3	2.02	0.42
1:A:110:GLN:NE2	1:B:110:GLN:HE21	2.17	0.42
1:D:36:ILE:HD12	1:D:36:ILE:C	2.40	0.42
1:B:89:GLN:HE21	6:B:305:CIT:C5	2.33	0.42
1:B:4:TRP:CH2	1:B:199:THR:HB	2.55	0.42
3:D:302[A]:3TV:H6	6:D:306:CIT:O7	2.19	0.42
1:A:103:SER:O	1:A:111:HIS:HD2	2.03	0.42
1:D:156:ASP:HB3	7:D:413:HOH:O	2.19	0.42
3:B:302[B]:3TV:F15	3:B:302[B]:3TV:H4	2.10	0.42
1:A:152:ASN:HB2	1:A:216[A]:GLN:O	2.20	0.41

Continued on next page...

Continued from previous page...

Atom-1	Atom-2	Interatomic distance (Å)	Clash overlap (Å)
1:B:26:LEU:CD2	1:B:255:ARG:HD3	2.51	0.41
1:A:99:ASP:OD1	1:A:101:HIS:HD2	2.03	0.41
1:A:147:GLU:O	1:A:216[B]:GLN:HA	2.20	0.41
1:C:12:GLU:HA	1:C:15:TRP:CE2	2.56	0.41
5:D:303:PEG:H12	5:D:303:PEG:H31	1.88	0.41
1:B:252:PHE:CE2	1:B:255:ARG:HB2	2.55	0.41
1:B:3:LYS:N	7:B:420:HOH:O	2.54	0.41
1:D:69:LYS:HZ3	6:D:306:CIT:H42	1.85	0.41
1:C:151:PHE:CA	1:C:218:SER:HB3	2.51	0.41
1:A:148[B]:MET:CE	7:A:769:HOH:O	2.67	0.40
1:B:68[A]:VAL:HG12	7:B:404:HOH:O	2.20	0.40
1:D:60:LEU:HD11	1:D:171:GLU:HB3	2.03	0.40
1:B:26:LEU:HD22	1:B:255:ARG:HD3	2.03	0.40
1:D:52:ASN:HA	1:D:178:ASN:HA	2.02	0.40
1:C:168:LYS:O	1:C:233:HIS:CD2	2.74	0.40
1:C:2:SER:HB2	7:C:430:HOH:O	2.21	0.40

There are no symmetry-related clashes.

5.3 Torsion angles ⓘ

5.3.1 Protein backbone ⓘ

In the following table, the Percentiles column shows the percent Ramachandran outliers of the chain as a percentile score with respect to all X-ray entries followed by that with respect to entries of similar resolution.

The Analysed column shows the number of residues for which the backbone conformation was analysed, and the total number of residues.

Mol	Chain	Analysed	Favoured	Allowed	Outliers	Percentiles	
1	A	275/263 (105%)	271 (98%)	4 (2%)	0	100	100
1	B	274/263 (104%)	268 (98%)	6 (2%)	0	100	100
1	C	268/263 (102%)	261 (97%)	7 (3%)	0	100	100
1	D	277/263 (105%)	268 (97%)	9 (3%)	0	100	100
All	All	1094/1052 (104%)	1068 (98%)	26 (2%)	0	100	100

There are no Ramachandran outliers to report.

5.3.2 Protein sidechains ⓘ

In the following table, the Percentiles column shows the percent sidechain outliers of the chain as a percentile score with respect to all X-ray entries followed by that with respect to entries of similar resolution.

The Analysed column shows the number of residues for which the sidechain conformation was analysed, and the total number of residues.

Mol	Chain	Analysed	Rotameric	Outliers	Percentiles	
1	A	246/235 (105%)	243 (99%)	3 (1%)	75	38
1	B	243/235 (103%)	237 (98%)	6 (2%)	53	12
1	C	233/235 (99%)	225 (97%)	8 (3%)	42	6
1	D	250/235 (106%)	245 (98%)	5 (2%)	60	19
All	All	972/940 (103%)	950 (98%)	22 (2%)	56	15

All (22) residues with a non-rotameric sidechain are listed below:

Mol	Chain	Res	Type
1	A	3	LYS
1	A	89	GLN
1	A	156	ASP
1	B	3	LYS
1	B	89	GLN
1	B	156	ASP
1	B	219	GLN
1	B	262	SER
1	B	263	GLN
1	C	18[A]	LYS
1	C	18[B]	LYS
1	C	89	GLN
1	C	150	SER
1	C	151	PHE
1	C	156	ASP
1	C	175	PRO
1	C	262	SER
1	D	35	ASP
1	D	89	GLN
1	D	156	ASP
1	D	163	GLN
1	D	263	GLN

Some sidechains can be flipped to improve hydrogen bonding and reduce clashes. All (11) such sidechains are listed below:

Mol	Chain	Res	Type
1	A	33	HIS
1	A	58	GLN
1	A	110	GLN
1	A	111	HIS
1	A	164	HIS
1	B	111	HIS
1	C	66	HIS
1	C	170	GLN
1	C	233	HIS
1	D	163	GLN
1	D	164	HIS

5.3.3 RNA ⓘ

There are no RNA molecules in this entry.

5.4 Non-standard residues in protein, DNA, RNA chains ⓘ

There are no non-standard protein/DNA/RNA residues in this entry.

5.5 Carbohydrates ⓘ

There are no carbohydrates in this entry.

5.6 Ligand geometry ⓘ

Of 30 ligands modelled in this entry, 4 are monoatomic - leaving 26 for Mogul analysis.

In the following table, the Counts columns list the number of bonds (or angles) for which Mogul statistics could be retrieved, the number of bonds (or angles) that are observed in the model and the number of bonds (or angles) that are defined in the Chemical Component Dictionary. The Link column lists molecule types, if any, to which the group is linked. The Z score for a bond length (or angle) is the number of standard deviations the observed value is removed from the expected value. A bond length (or angle) with $|Z| > 2$ is considered an outlier worth inspection. RMSZ is the root-mean-square of all Z scores of the bond lengths (or angles).

Mol	Type	Chain	Res	Link	Bond lengths			Bond angles		
					Counts	RMSZ	$\# Z > 2$	Counts	RMSZ	$\# Z > 2$
3	3TV	A	302[A]	2	18,18,18	1.37	1 (5%)	25,27,27	2.13	8 (32%)
3	3TV	A	302[B]	2	18,18,18	1.55	4 (22%)	25,27,27	2.06	9 (36%)
4	EDO	A	303	-	3,3,3	0.91	0	2,2,2	0.92	0

Mol	Type	Chain	Res	Link	Bond lengths			Bond angles		
					Counts	RMSZ	# Z > 2	Counts	RMSZ	# Z > 2
4	EDO	A	304	-	3,3,3	0.92	0	2,2,2	0.37	0
4	EDO	A	305	-	3,3,3	0.94	0	2,2,2	0.14	0
5	PEG	A	306	-	6,6,6	0.97	0	5,5,5	1.38	1 (20%)
4	EDO	A	307	-	3,3,3	0.75	0	2,2,2	0.48	0
4	EDO	A	308	-	3,3,3	0.46	0	2,2,2	0.81	0
4	EDO	A	309	-	3,3,3	0.55	0	2,2,2	2.86	1 (50%)
4	EDO	A	310	-	3,3,3	1.15	0	2,2,2	0.37	0
3	3TV	B	302[A]	2	18,18,18	2.47	8 (44%)	25,27,27	2.71	8 (32%)
3	3TV	B	302[B]	2	18,18,18	1.80	4 (22%)	25,27,27	3.10	8 (32%)
4	EDO	B	303	-	3,3,3	0.94	0	2,2,2	0.43	0
5	PEG	B	304	-	6,6,6	0.46	0	5,5,5	2.41	3 (60%)
6	CIT	B	305	-	3,12,12	3.65	2 (66%)	3,17,17	2.18	1 (33%)
3	3TV	C	302	2	18,18,18	1.11	2 (11%)	25,27,27	1.48	3 (12%)
4	EDO	C	303	-	3,3,3	0.78	0	2,2,2	0.75	0
5	PEG	C	304	-	6,6,6	0.92	0	5,5,5	0.81	0
4	EDO	C	305	-	3,3,3	1.04	0	2,2,2	1.13	0
3	3TV	D	302[A]	2	18,18,18	1.50	3 (16%)	25,27,27	1.98	11 (44%)
3	3TV	D	302[B]	2	18,18,18	2.56	6 (33%)	25,27,27	3.13	12 (48%)
5	PEG	D	303	-	6,6,6	0.59	0	5,5,5	1.27	0
6	CIT	D	304	-	3,12,12	1.01	0	3,17,17	1.13	0
4	EDO	D	305	-	3,3,3	0.63	0	2,2,2	0.28	0
6	CIT	D	306	-	3,12,12	2.44	2 (66%)	3,17,17	2.85	2 (66%)
4	EDO	D	307	-	3,3,3	0.90	0	2,2,2	0.40	0

In the following table, the Chirals column lists the number of chiral outliers, the number of chiral centers analysed, the number of these observed in the model and the number defined in the Chemical Component Dictionary. Similar counts are reported in the Torsion and Rings columns. '-' means no outliers of that kind were identified.

Mol	Type	Chain	Res	Link	Chirals	Torsions	Rings
3	3TV	A	302[A]	2	-	0/10/10/10	0/1/1/1
3	3TV	A	302[B]	2	-	0/10/10/10	0/1/1/1
4	EDO	A	303	-	-	0/1/1/1	0/0/0/0
4	EDO	A	304	-	-	0/1/1/1	0/0/0/0
4	EDO	A	305	-	-	0/1/1/1	0/0/0/0
5	PEG	A	306	-	-	0/4/4/4	0/0/0/0
4	EDO	A	307	-	-	0/1/1/1	0/0/0/0
4	EDO	A	308	-	-	0/1/1/1	0/0/0/0
4	EDO	A	309	-	-	0/1/1/1	0/0/0/0
4	EDO	A	310	-	-	0/1/1/1	0/0/0/0

Continued on next page...

Continued from previous page...

Mol	Type	Chain	Res	Link	Chirals	Torsions	Rings
3	3TV	B	302[A]	2	-	0/10/10/10	0/1/1/1
3	3TV	B	302[B]	2	-	0/10/10/10	0/1/1/1
4	EDO	B	303	-	-	0/1/1/1	0/0/0/0
5	PEG	B	304	-	-	0/4/4/4	0/0/0/0
6	CIT	B	305	-	-	0/6/16/16	0/0/0/0
3	3TV	C	302	2	-	0/10/10/10	0/1/1/1
4	EDO	C	303	-	-	0/1/1/1	0/0/0/0
5	PEG	C	304	-	-	0/4/4/4	0/0/0/0
4	EDO	C	305	-	-	0/1/1/1	0/0/0/0
3	3TV	D	302[A]	2	-	0/10/10/10	0/1/1/1
3	3TV	D	302[B]	2	-	0/10/10/10	0/1/1/1
5	PEG	D	303	-	-	0/4/4/4	0/0/0/0
6	CIT	D	304	-	-	0/6/16/16	0/0/0/0
4	EDO	D	305	-	-	0/1/1/1	0/0/0/0
6	CIT	D	306	-	-	0/6/16/16	0/0/0/0
4	EDO	D	307	-	-	0/1/1/1	0/0/0/0

All (32) bond length outliers are listed below:

Mol	Chain	Res	Type	Atoms	Z	Observed(Å)	Ideal(Å)
3	B	302[B]	3TV	C6-C5	-5.27	1.33	1.39
6	B	305	CIT	C4-C3	-4.88	1.47	1.54
3	A	302[A]	3TV	C10-C5	-4.68	1.34	1.39
3	B	302[A]	3TV	F16-C10	-3.62	1.29	1.35
3	D	302[B]	3TV	F17-C6	-3.40	1.29	1.35
3	A	302[B]	3TV	F15-C9	-3.35	1.29	1.35
3	A	302[B]	3TV	S1-N2	-3.00	1.54	1.60
3	D	302[A]	3TV	C10-C5	-2.99	1.36	1.39
3	B	302[A]	3TV	O3-S1	-2.95	1.37	1.43
3	B	302[A]	3TV	F15-C9	-2.90	1.30	1.35
3	B	302[A]	3TV	S1-N2	-2.77	1.54	1.60
3	D	302[A]	3TV	C5-S1	-2.55	1.74	1.79
3	A	302[B]	3TV	C10-C5	-2.33	1.36	1.39
3	B	302[B]	3TV	F18-C7	-2.31	1.31	1.35
3	C	302	3TV	C6-C5	-2.28	1.36	1.39
3	B	302[B]	3TV	C5-S1	-2.16	1.75	1.79
3	C	302	3TV	C8-C7	-2.04	1.35	1.38
6	D	306	CIT	C4-C3	-2.03	1.51	1.54
3	B	302[A]	3TV	C10-C9	2.23	1.41	1.37
3	D	302[A]	3TV	C8-S11	2.26	1.80	1.78
3	D	302[B]	3TV	C10-C5	2.56	1.42	1.39
3	B	302[A]	3TV	C8-S11	2.68	1.81	1.78

Continued on next page...

Continued from previous page...

Mol	Chain	Res	Type	Atoms	Z	Observed(Å)	Ideal(Å)
3	A	302[B]	3TV	C8-S11	2.83	1.81	1.78
3	D	302[B]	3TV	C8-S11	3.00	1.81	1.78
6	D	306	CIT	C2-C3	3.27	1.59	1.54
3	B	302[B]	3TV	S1-N2	3.89	1.68	1.60
6	B	305	CIT	C2-C3	4.01	1.60	1.54
3	D	302[B]	3TV	C6-C7	4.31	1.45	1.37
3	D	302[B]	3TV	C6-C5	4.77	1.45	1.39
3	B	302[A]	3TV	C10-C5	4.94	1.45	1.39
3	B	302[A]	3TV	C5-S1	5.14	1.88	1.79
3	D	302[B]	3TV	C5-S1	6.44	1.90	1.79

All (67) bond angle outliers are listed below:

Mol	Chain	Res	Type	Atoms	Z	Observed(°)	Ideal(°)
3	D	302[B]	3TV	C10-C5-C6	-9.68	109.85	116.58
3	B	302[A]	3TV	C10-C5-C6	-9.21	110.17	116.58
3	B	302[B]	3TV	C7-C6-C5	-5.46	115.77	121.68
3	B	302[B]	3TV	O3-S1-C5	-5.23	99.60	107.36
3	A	302[B]	3TV	O3-S1-C5	-4.62	100.51	107.36
3	A	302[A]	3TV	O3-S1-C5	-4.60	100.53	107.36
3	D	302[B]	3TV	C5-S1-N2	-4.46	99.67	108.24
6	D	306	CIT	C3-C4-C5	-4.07	108.59	114.95
3	B	302[A]	3TV	O4-S1-C5	-4.01	101.42	107.36
3	D	302[B]	3TV	C8-C7-C6	-3.83	116.18	121.97
3	A	302[A]	3TV	F15-C9-C10	-3.61	111.89	119.29
3	D	302[B]	3TV	F17-C6-C7	-3.55	112.02	119.29
3	D	302[A]	3TV	O3-S1-C5	-3.41	102.30	107.36
6	B	305	CIT	C3-C2-C1	-3.39	109.65	114.95
3	A	302[B]	3TV	F15-C9-C10	-3.18	112.77	119.29
3	D	302[B]	3TV	F18-C7-C8	-3.17	115.54	119.84
3	D	302[A]	3TV	O4-S1-C5	-3.07	102.80	107.36
3	B	302[B]	3TV	C8-C9-C10	-3.05	117.36	121.97
3	A	302[A]	3TV	C8-C7-C6	-2.96	117.50	121.97
3	B	302[A]	3TV	C7-C8-S11	-2.78	115.51	121.82
3	A	302[B]	3TV	C8-C7-C6	-2.77	117.78	121.97
3	A	302[B]	3TV	O4-S1-C5	-2.70	103.36	107.36
3	D	302[A]	3TV	F16-C10-C9	-2.69	113.77	119.29
3	C	302	3TV	O3-S1-C5	-2.56	103.56	107.36
3	D	302[A]	3TV	C8-C7-C6	-2.45	118.27	121.97
3	D	302[A]	3TV	C9-C8-S11	-2.34	116.51	121.82
3	A	302[B]	3TV	C12-S11-C8	-2.31	94.60	102.16
3	D	302[A]	3TV	C8-C9-C10	-2.23	118.59	121.97

Continued on next page...

Continued from previous page...

Mol	Chain	Res	Type	Atoms	Z	Observed(°)	Ideal(°)
3	A	302[A]	3TV	C9-C10-C5	-2.23	119.28	121.68
3	C	302	3TV	F17-C6-C7	-2.11	114.96	119.29
3	D	302[B]	3TV	O3-S1-N2	2.09	110.63	107.34
3	D	302[B]	3TV	O3-S1-C5	2.11	110.50	107.36
5	B	304	PEG	O2-C3-C4	2.14	120.02	110.15
3	B	302[A]	3TV	O3-S1-C5	2.28	110.75	107.36
3	A	302[B]	3TV	C10-C5-C6	2.28	118.17	116.58
3	D	302[B]	3TV	C9-C8-C7	2.34	120.20	116.19
3	B	302[A]	3TV	C9-C8-S11	2.38	127.20	121.82
5	B	304	PEG	O2-C2-C1	2.41	121.25	110.15
3	B	302[B]	3TV	F17-C6-C5	2.45	124.99	120.54
3	D	302[A]	3TV	F15-C9-C8	2.46	123.17	119.84
3	D	302[A]	3TV	C9-C8-C7	2.53	120.52	116.19
3	D	302[B]	3TV	C9-C10-C5	2.58	124.48	121.68
3	A	302[B]	3TV	F15-C9-C8	2.68	123.46	119.84
6	D	306	CIT	C3-C2-C1	2.71	119.18	114.95
5	A	306	PEG	C3-O2-C2	2.72	125.08	113.30
3	B	302[B]	3TV	C9-C8-C7	2.74	120.88	116.19
3	D	302[A]	3TV	C10-C5-C6	2.76	118.50	116.58
3	B	302[A]	3TV	C9-C10-C5	2.82	124.74	121.68
3	D	302[A]	3TV	C5-S1-N2	2.94	113.89	108.24
3	D	302[A]	3TV	F18-C7-C8	2.94	123.83	119.84
3	A	302[B]	3TV	F18-C7-C8	2.99	123.89	119.84
3	B	302[A]	3TV	C7-C6-C5	3.10	125.04	121.68
3	A	302[A]	3TV	F15-C9-C8	3.29	124.30	119.84
3	A	302[A]	3TV	O4-S1-N2	3.38	112.66	107.34
4	A	309	EDO	O2-C2-C1	3.58	137.73	112.08
3	D	302[B]	3TV	O4-S1-N2	3.62	113.02	107.34
3	C	302	3TV	O4-S1-N2	3.71	113.17	107.34
3	A	302[A]	3TV	C10-C5-C6	4.04	119.39	116.58
5	B	304	PEG	O4-C4-C3	4.15	135.74	111.89
3	B	302[B]	3TV	F15-C9-C8	4.18	125.50	119.84
3	A	302[B]	3TV	O3-S1-N2	4.29	114.08	107.34
3	A	302[A]	3TV	F18-C7-C8	4.30	125.67	119.84
3	B	302[B]	3TV	O4-S1-N2	4.35	114.18	107.34
3	D	302[B]	3TV	F18-C7-C6	4.38	128.28	119.29
3	D	302[B]	3TV	C7-C6-C5	5.08	127.19	121.68
3	B	302[A]	3TV	O3-S1-N2	5.28	115.64	107.34
3	B	302[B]	3TV	C10-C5-C6	10.42	123.82	116.58

There are no chirality outliers.

There are no torsion outliers.

There are no ring outliers.

19 monomers are involved in 99 short contacts:

Mol	Chain	Res	Type	Clashes	Symm-Clashes
3	A	302[B]	3TV	6	0
5	A	306	PEG	2	0
4	A	307	EDO	4	0
4	A	308	EDO	1	0
4	A	309	EDO	3	0
4	A	310	EDO	1	0
3	B	302[A]	3TV	1	0
3	B	302[B]	3TV	4	0
5	B	304	PEG	2	0
6	B	305	CIT	19	0
3	C	302	3TV	1	0
5	C	304	PEG	5	0
4	C	305	EDO	3	0
3	D	302[A]	3TV	10	0
3	D	302[B]	3TV	8	0
5	D	303	PEG	2	0
6	D	304	CIT	7	0
6	D	306	CIT	28	0
4	D	307	EDO	2	0

5.7 Other polymers [i](#)

There are no such residues in this entry.

5.8 Polymer linkage issues [i](#)

There are no chain breaks in this entry.

6 Fit of model and data ⓘ

6.1 Protein, DNA and RNA chains ⓘ

In the following table, the column labelled ‘#RSRZ> 2’ contains the number (and percentage) of RSRZ outliers, followed by percent RSRZ outliers for the chain as percentile scores relative to all X-ray entries and entries of similar resolution. The OWAB column contains the minimum, median, 95th percentile and maximum values of the occupancy-weighted average B-factor per residue. The column labelled ‘Q< 0.9’ lists the number of (and percentage) of residues with an average occupancy less than 0.9.

Mol	Chain	Analysed	<RSRZ>	#RSRZ>2	OWAB(Å ²)	Q<0.9
1	A	261/263 (99%)	-0.29	1 (0%) 92 90	8, 15, 30, 61	1 (0%)
1	B	261/263 (99%)	-0.20	6 (2%) 61 58	6, 13, 28, 79	1 (0%)
1	C	262/263 (99%)	0.10	10 (3%) 41 39	8, 20, 51, 106	0
1	D	261/263 (99%)	-0.17	5 (1%) 67 65	7, 14, 29, 88	0
All	All	1045/1052 (99%)	-0.14	22 (2%) 64 61	6, 15, 36, 106	2 (0%)

All (22) RSRZ outliers are listed below:

Mol	Chain	Res	Type	RSRZ
1	D	252	PHE	8.3
1	C	3	LYS	5.7
1	C	55	ALA	5.5
1	D	253	ASP	5.3
1	C	151	PHE	5.1
1	C	2	SER	4.4
1	C	165	VAL	4.2
1	B	263	GLN	4.1
1	D	263	GLN	3.8
1	B	254	GLU	3.5
1	B	255	ARG	3.2
1	C	56	ASN	3.0
1	C	173	PHE	2.9
1	B	253	ASP	2.7
1	C	234	MET	2.6
1	C	53	LEU	2.6
1	D	262	SER	2.6
1	D	68[A]	VAL	2.5
1	A	3	LYS	2.5
1	C	7	PHE	2.3
1	B	68[A]	VAL	2.3
1	B	64	ASN	2.1

6.2 Non-standard residues in protein, DNA, RNA chains ⓘ

There are no non-standard protein/DNA/RNA residues in this entry.

6.3 Carbohydrates ⓘ

There are no carbohydrates in this entry.

6.4 Ligands ⓘ

In the following table, the Atoms column lists the number of modelled atoms in the group and the number defined in the chemical component dictionary. LLDF column lists the quality of electron density of the group with respect to its neighbouring residues in protein, DNA or RNA chains. The B-factors column lists the minimum, median, 95th percentile and maximum values of B factors of atoms in the group. The column labelled 'Q< 0.9' lists the number of atoms with occupancy less than 0.9.

Mol	Type	Chain	Res	Atoms	RSCC	RSR	LLDF	B-factors(Å ²)	Q<0.9
4	EDO	A	308	4/4	0.73	0.48	36.93	27,29,30,33	0
4	EDO	D	307	4/4	0.94	0.26	13.41	22,24,25,25	0
6	CIT	D	304	13/13	0.88	0.30	12.98	16,38,79,111	0
4	EDO	A	307	4/4	0.88	0.40	12.66	22,23,26,30	0
5	PEG	C	304	7/7	0.65	0.28	8.88	27,30,52,53	0
5	PEG	B	304	7/7	0.90	0.24	8.29	24,35,47,61	0
3	3TV	D	302[A]	18/18	0.97	0.13	7.13	7,9,29,35	18
3	3TV	D	302[B]	18/18	0.97	0.13	6.58	8,18,29,41	18
3	3TV	A	302[B]	18/18	0.98	0.09	6.46	9,18,29,50	18
4	EDO	A	304	4/4	0.79	0.21	6.24	41,46,47,59	0
3	3TV	A	302[A]	18/18	0.98	0.09	5.72	8,13,30,31	18
4	EDO	A	309	4/4	0.88	0.28	5.62	20,24,24,27	0
4	EDO	C	305	4/4	0.90	0.31	5.14	24,26,27,28	0
4	EDO	B	303	4/4	0.93	0.12	4.09	15,26,27,29	0
4	EDO	D	305	4/4	0.93	0.18	3.95	33,40,47,56	0
4	EDO	A	303	4/4	0.96	0.09	3.77	22,23,27,32	0
3	3TV	B	302[B]	18/18	0.99	0.09	3.23	8,15,37,43	18
4	EDO	A	305	4/4	0.88	0.11	3.10	27,27,29,31	0
3	3TV	C	302	18/18	0.98	0.09	2.85	10,15,33,40	0
4	EDO	C	303	4/4	0.93	0.14	2.68	18,20,21,22	0
3	3TV	B	302[A]	18/18	0.99	0.09	2.32	7,10,17,20	18
5	PEG	D	303	7/7	0.93	0.12	0.24	34,56,61,70	0
5	PEG	A	306	7/7	0.89	0.19	-	26,35,50,54	0
2	ZN	A	301	1/1	1.00	0.04	-	7,7,7,7	0
6	CIT	D	306	13/13	0.83	0.23	-	14,25,37,47	13

Continued on next page...

Continued from previous page...

Mol	Type	Chain	Res	Atoms	RSCC	RSR	LLDF	B-factors(\AA^2)	Q<0.9
2	ZN	C	301	1/1	1.00	0.04	-	11,11,11,11	0
2	ZN	B	301	1/1	1.00	0.05	-	6,6,6,6	0
2	ZN	D	301	1/1	1.00	0.05	-	6,6,6,6	0
6	CIT	B	305	13/13	0.80	0.26	-	14,22,35,36	13
4	EDO	A	310	4/4	0.89	0.25	-	22,25,25,27	0

6.5 Other polymers [i](#)

There are no such residues in this entry.