



# Full wwPDB X-ray Structure Validation Report ⓘ

Feb 14, 2017 – 10:20 pm GMT

PDB ID : 1MWU  
Title : Structure of methicillin acyl-Penicillin binding protein 2a from methicillin resistant *Staphylococcus aureus* strain 27r at 2.60 Å resolution.  
Authors : Lim, D.C.; Strynadka, N.C.J.  
Deposited on : 2002-10-01  
Resolution : 2.60 Å(reported)

This is a Full wwPDB X-ray Structure Validation Report for a publicly released PDB entry.

We welcome your comments at [validation@mail.wwpdb.org](mailto:validation@mail.wwpdb.org)

A user guide is available at

<http://wwpdb.org/validation/2016/XrayValidationReportHelp>

with specific help available everywhere you see the ⓘ symbol.

---

The following versions of software and data (see [references ⓘ](#)) were used in the production of this report:

MolProbity : 4.02b-467  
Mogul : 1.7.2 (RC1), CSD as538be (2017)  
Xtriage (Phenix) : 1.9-1692  
EDS : trunk28620  
Percentile statistics : 20161228.v01 (using entries in the PDB archive December 28th 2016)  
Refmac : 5.8.0135  
CCP4 : 6.5.0  
Ideal geometry (proteins) : Engh & Huber (2001)  
Ideal geometry (DNA, RNA) : Parkinson et al. (1996)  
Validation Pipeline (wwPDB-VP) : recalc28949

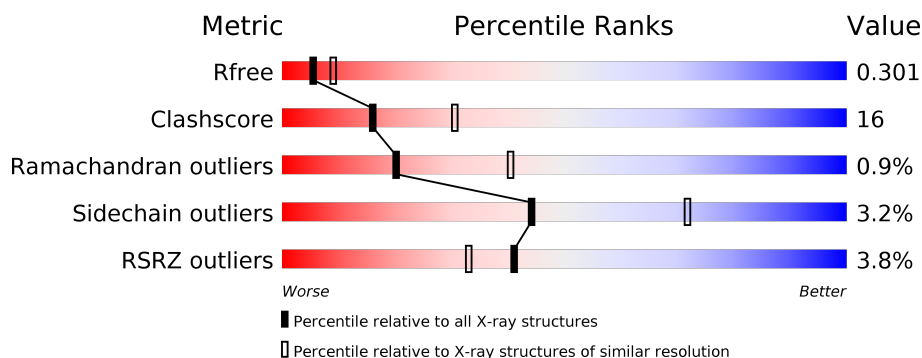
# 1 Overall quality at a glance

The following experimental techniques were used to determine the structure:

## *X-RAY DIFFRACTION*

The reported resolution of this entry is 2.60 Å.

Percentile scores (ranging between 0-100) for global validation metrics of the entry are shown in the following graphic. The table shows the number of entries on which the scores are based.



Metric	Whole archive (#Entries)	Similar resolution (#Entries, resolution range(Å))
$R_{free}$	100719	2542 (2.60-2.60)
Clashscore	112137	2895 (2.60-2.60)
Ramachandran outliers	110173	2848 (2.60-2.60)
Sidechain outliers	110143	2848 (2.60-2.60)
RSRZ outliers	101464	2550 (2.60-2.60)

The table below summarises the geometric issues observed across the polymeric chains and their fit to the electron density. The red, orange, yellow and green segments on the lower bar indicate the fraction of residues that contain outliers for  $\geq 3$ , 2, 1 and 0 types of geometric quality criteria. A grey segment represents the fraction of residues that are not modelled. The numeric value for each fraction is indicated below the corresponding segment, with a dot representing fractions  $\leq 5\%$ . The upper red bar (where present) indicates the fraction of residues that have poor fit to the electron density. The numeric value is given above the bar.

Mol	Chain	Length	Quality of chain
1	A	646	<div> <div>2%</div> <div> <div></div> <div>63%</div> <div>33%</div> <div>• •</div> </div> </div>
1	B	646	<div> <div>5%</div> <div> <div></div> <div>61%</div> <div>31%</div> <div>• 6%</div> </div> </div>

## 2 Entry composition [i](#)

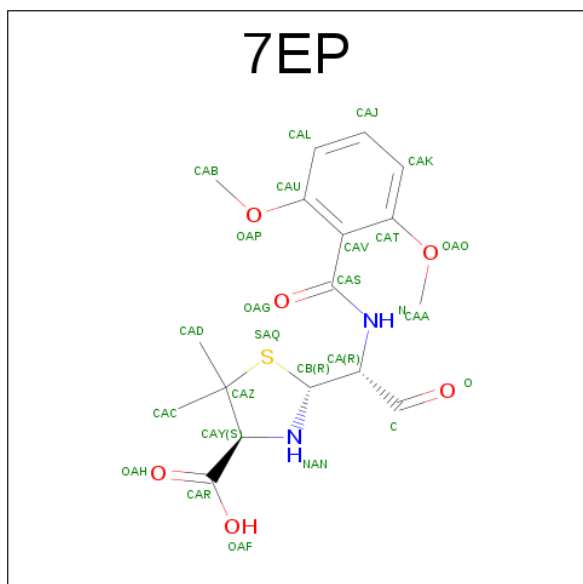
There are 5 unique types of molecules in this entry. The entry contains 10109 atoms, of which 0 are hydrogens and 0 are deuteriums.

In the tables below, the ZeroOcc column contains the number of atoms modelled with zero occupancy, the AltConf column contains the number of residues with at least one atom in alternate conformation and the Trace column contains the number of residues modelled with at most 2 atoms.

- Molecule 1 is a protein called penicillin-binding protein 2a.

Mol	Chain	Residues	Atoms					ZeroOcc	AltConf	Trace
1	A	632	Total	C	N	O	S	0	0	0
			5077	3202	853	1007	15			
1	B	609	Total	C	N	O	S	0	0	0
			4904	3099	822	969	14			

- Molecule 2 is (2R,4S)-2-[(1R)-1-[(2,6-DIMETHOXYPHENYL)CARBONYL]AMINO}-2-OXOETHYL]-5,5-DIMETHYL-1,3-THIAZOLIDINE-4-CARBOXYLIC ACID (three-letter code: 7EP) (formula: C<sub>17</sub>H<sub>22</sub>N<sub>2</sub>O<sub>6</sub>S).



Mol	Chain	Residues	Atoms					ZeroOcc	AltConf
2	A	1	Total	C	N	O	S	0	0
			26	17	2	6	1		
2	B	1	Total	C	N	O	S	0	0
			26	17	2	6	1		

- Molecule 3 is CADMIUM ION (three-letter code: CD) (formula: Cd).

Mol	Chain	Residues	Atoms		ZeroOcc	AltConf
3	B	3	Total 3	Cd 3	0	0
3	A	2	Total 2	Cd 2	0	0

- Molecule 4 is CHLORIDE ION (three-letter code: CL) (formula: Cl).

Mol	Chain	Residues	Atoms		ZeroOcc	AltConf
4	B	3	Total 3	Cl 3	0	0
4	A	1	Total 1	Cl 1	0	0

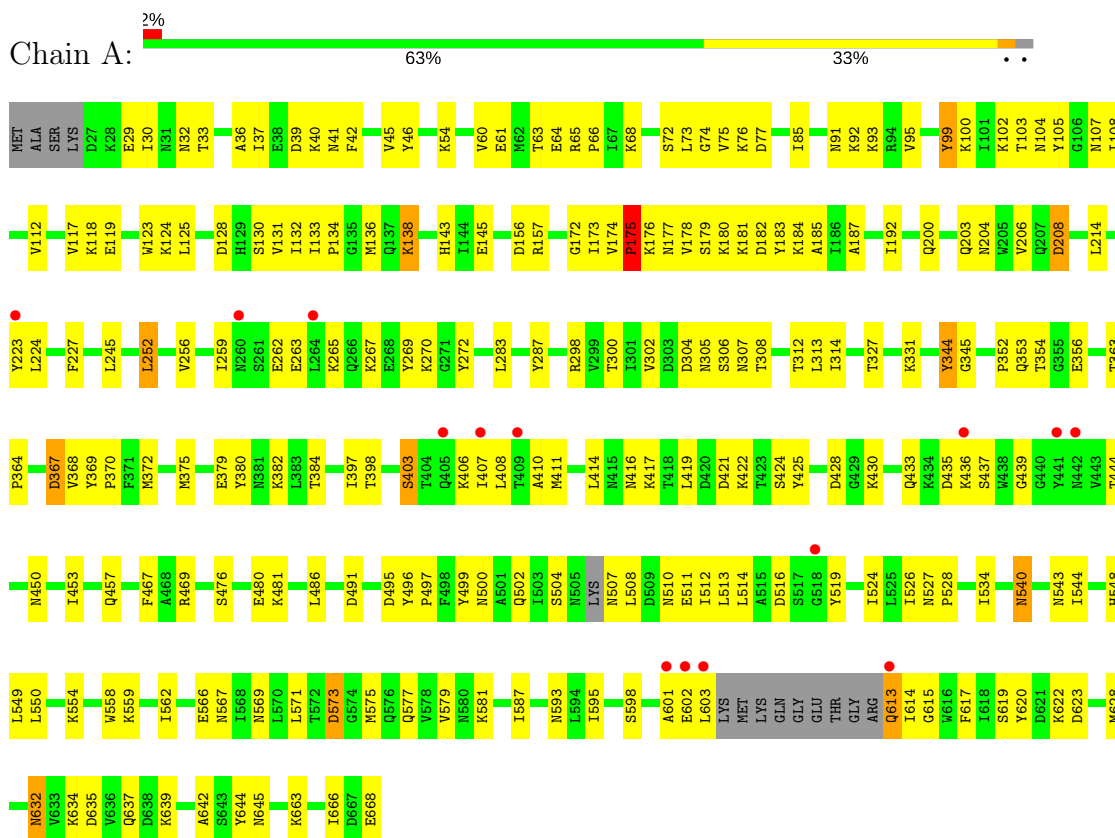
- Molecule 5 is water.

Mol	Chain	Residues	Atoms		ZeroOcc	AltConf
5	A	42	Total 42	O 42	0	0
5	B	25	Total 25	O 25	0	0

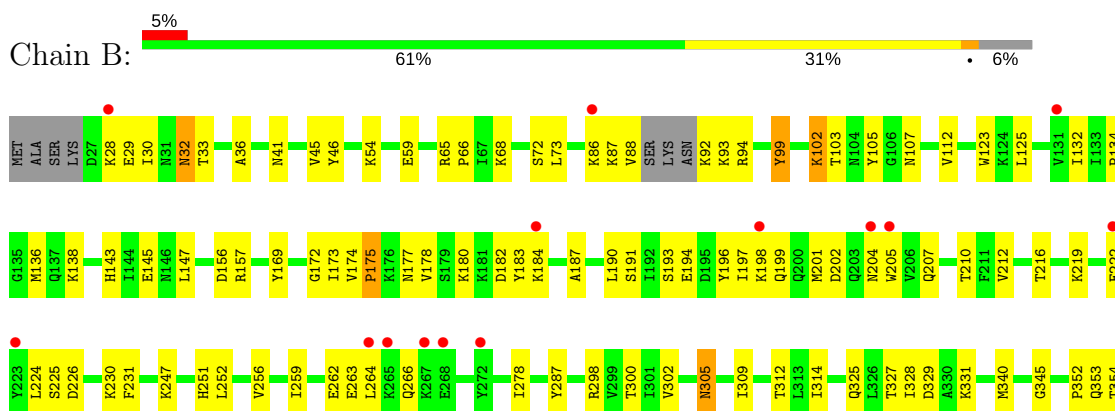
### 3 Residue-property plots

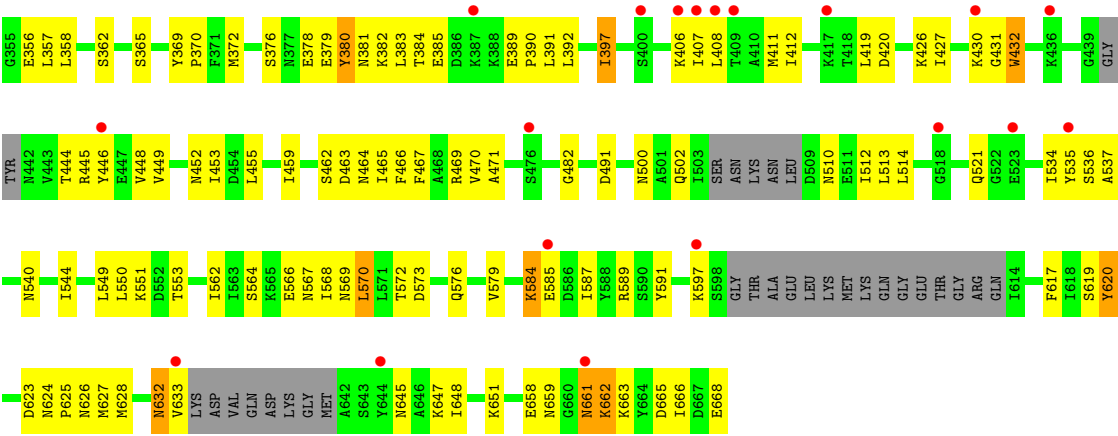
These plots are drawn for all protein, RNA and DNA chains in the entry. The first graphic for a chain summarises the proportions of the various outlier classes displayed in the second graphic. The second graphic shows the sequence view annotated by issues in geometry and electron density. Residues are color-coded according to the number of geometric quality criteria for which they contain at least one outlier: green = 0, yellow = 1, orange = 2 and red = 3 or more. A red dot above a residue indicates a poor fit to the electron density ( $RSRZ > 2$ ). Stretches of 2 or more consecutive residues without any outlier are shown as a green connector. Residues present in the sample, but not in the model, are shown in grey.

- Molecule 1: penicillin-binding protein 2a



- Molecule 1: penicillin-binding protein 2a





## 4 Data and refinement statistics

Property	Value	Source
Space group	P 21 21 21	Depositor
Cell constants a, b, c, $\alpha$ , $\beta$ , $\gamma$	80.67Å 103.21Å 186.49Å 90.00° 90.00° 90.00°	Depositor
Resolution (Å)	24.68 – 2.60 24.68 – 2.60	Depositor EDS
% Data completeness (in resolution range)	97.9 (24.68-2.60) 98.0 (24.68-2.60)	Depositor EDS
$R_{merge}$	(Not available)	Depositor
$R_{sym}$	0.05	Depositor
$\langle I/\sigma(I) \rangle$ <sup>1</sup>	1.85 (at 2.60Å)	Xtriage
Refinement program	CNS 1.1	Depositor
R, $R_{free}$	0.242 , 0.303 0.240 , 0.301	Depositor DCC
$R_{free}$ test set	2383 reflections (5.00%)	DCC
Wilson B-factor (Å <sup>2</sup> )	55.8	Xtriage
Anisotropy	0.616	Xtriage
Bulk solvent $k_{sol}$ (e/Å <sup>3</sup> ), $B_{sol}$ (Å <sup>2</sup> )	0.32 , 49.9	EDS
L-test for twinning <sup>2</sup>	$\langle  L  \rangle = 0.52$ , $\langle L^2 \rangle = 0.36$	Xtriage
Estimated twinning fraction	No twinning to report.	Xtriage
$F_o, F_c$ correlation	0.94	EDS
Total number of atoms	10109	wwPDB-VP
Average B, all atoms (Å <sup>2</sup> )	62.0	wwPDB-VP

Xtriage's analysis on translational NCS is as follows: *The largest off-origin peak in the Patterson function is 3.66% of the height of the origin peak. No significant pseudotranslation is detected.*

<sup>1</sup>Intensities estimated from amplitudes.

<sup>2</sup>Theoretical values of  $\langle |L| \rangle$ ,  $\langle L^2 \rangle$  for acentric reflections are 0.5, 0.333 respectively for untwinned datasets, and 0.375, 0.2 for perfectly twinned datasets.

## 5 Model quality

### 5.1 Standard geometry

Bond lengths and bond angles in the following residue types are not validated in this section: CL, 7EP, CD

The Z score for a bond length (or angle) is the number of standard deviations the observed value is removed from the expected value. A bond length (or angle) with  $|Z| > 5$  is considered an outlier worth inspection. RMSZ is the root-mean-square of all Z scores of the bond lengths (or angles).

Mol	Chain	Bond lengths		Bond angles	
		RMSZ	# Z  >5	RMSZ	# Z  >5
1	A	0.29	0/5161	0.55	0/6941
1	B	0.29	0/4984	0.55	0/6700
All	All	0.29	0/10145	0.55	0/13641

There are no bond length outliers.

There are no bond angle outliers.

There are no chirality outliers.

There are no planarity outliers.

### 5.2 Too-close contacts

In the following table, the Non-H and H(model) columns list the number of non-hydrogen atoms and hydrogen atoms in the chain respectively. The H(added) column lists the number of hydrogen atoms added and optimized by MolProbity. The Clashes column lists the number of clashes within the asymmetric unit, whereas Symm-Clashes lists symmetry related clashes.

Mol	Chain	Non-H	H(model)	H(added)	Clashes	Symm-Clashes
1	A	5077	0	5062	167	0
1	B	4904	0	4892	161	0
2	A	26	0	20	1	0
2	B	26	0	20	2	0
3	A	2	0	0	0	0
3	B	3	0	0	0	0
4	A	1	0	0	0	0
4	B	3	0	0	1	0
5	A	42	0	0	1	0
5	B	25	0	0	0	0
All	All	10109	0	9994	325	0



The all-atom clashscore is defined as the number of clashes found per 1000 atoms (including hydrogen atoms). The all-atom clashscore for this structure is 16.

All (325) close contacts within the same asymmetric unit are listed below, sorted by their clash magnitude.

Atom-1	Atom-2	Interatomic distance (Å)	Clash overlap (Å)
1:B:138:LYS:H	1:B:138:LYS:HD2	1.25	0.99
1:A:138:LYS:H	1:A:138:LYS:HD2	1.32	0.94
1:B:455:LEU:HD23	1:B:570:LEU:HD22	1.50	0.93
1:B:579:VAL:HG13	1:B:587:ILE:HG23	1.53	0.88
1:B:392:LEU:HD11	1:B:397:ILE:HD13	1.60	0.83
1:A:408:LEU:HD22	1:A:534:ILE:HG21	1.61	0.81
1:B:584:LYS:HD2	1:B:585:GLU:N	1.96	0.81
1:B:86:LYS:HG2	1:B:87:LYS:H	1.45	0.80
1:B:138:LYS:HD2	1:B:138:LYS:N	1.96	0.79
1:B:626:ASN:HD21	1:B:665:ASP:HA	1.47	0.78
1:A:46:TYR:O	1:A:54:LYS:HD3	1.85	0.76
1:B:383:LEU:HB3	1:B:391:LEU:HD11	1.65	0.76
1:A:138:LYS:CD	1:A:138:LYS:H	1.99	0.75
1:B:510:ASN:HD22	1:B:513:LEU:H	1.34	0.75
1:A:433:GLN:NE2	1:A:436:LYS:HA	2.04	0.72
1:A:559:LYS:HB3	1:A:562:ILE:HD11	1.72	0.71
1:A:602:GLU:HG3	2:A:701:7EP:HAJ	1.72	0.71
1:A:435:ASP:OD2	1:A:437:SER:HB3	1.90	0.71
1:A:262:GLU:OE1	1:A:265:LYS:HD2	1.91	0.69
1:A:91:ASN:HD22	1:A:118:LYS:HB3	1.56	0.69
1:B:263:GLU:HA	1:B:266:GLN:OE1	1.91	0.69
1:B:510:ASN:ND2	1:B:513:LEU:H	1.90	0.69
1:B:353:GLN:HA	1:B:540:ASN:HD22	1.57	0.69
1:B:569:ASN:HA	1:B:572:THR:OG1	1.93	0.69
1:A:119:GLU:HG3	1:A:124:LYS:HG3	1.75	0.69
1:A:407:ILE:O	1:A:411:MET:HG3	1.93	0.68
1:A:99:TYR:HD1	1:A:112:VAL:HG11	1.58	0.68
1:A:200:GLN:O	1:A:203:GLN:HG3	1.95	0.67
1:B:29:GLU:HG3	1:B:30:ILE:H	1.58	0.67
1:B:658:GLU:HG3	1:B:662:LYS:HE2	1.78	0.66
1:A:634:LYS:HE3	1:A:635:ASP:OD2	1.96	0.65
1:A:91:ASN:ND2	1:A:118:LYS:HB3	2.12	0.64
1:A:382:LYS:HD3	1:A:382:LYS:O	1.98	0.64
1:A:603:LEU:HD22	1:A:613:GLN:N	2.12	0.63
1:B:222:GLU:HA	1:B:225:SER:HB3	1.79	0.63
1:A:430:LYS:O	1:A:444:THR:HA	1.98	0.63
1:A:60:VAL:HG22	1:A:64:GLU:OE2	1.99	0.63

*Continued on next page...*

*Continued from previous page...*

Atom-1	Atom-2	Interatomic distance (Å)	Clash overlap (Å)
1:A:510:ASN:HB3	1:A:513:LEU:HB2	1.79	0.63
1:A:298:ARG:HG2	1:A:300:THR:HG23	1.80	0.63
1:B:184:LYS:HD3	1:B:194:GLU:OE1	1.99	0.63
1:B:407:ILE:O	1:B:411:MET:HG3	1.98	0.63
1:A:433:GLN:HE22	1:A:436:LYS:HA	1.64	0.63
1:B:29:GLU:HG3	1:B:30:ILE:N	2.13	0.63
1:B:536:SER:HA	1:B:628:MET:SD	2.38	0.62
1:A:102:LYS:HG2	1:A:107:ASN:OD1	1.99	0.62
1:A:569:ASN:O	1:A:573:ASP:HB2	1.99	0.62
1:B:537:ALA:CB	1:B:562:ILE:HD11	2.29	0.62
1:B:87:LYS:HB3	1:B:93:LYS:HG2	1.79	0.62
1:B:502:GLN:HE21	1:B:502:GLN:HA	1.65	0.62
1:A:491:ASP:HA	1:A:500:ASN:HD21	1.64	0.61
1:B:157:ARG:HD3	1:B:666:ILE:O	2.01	0.61
1:A:428:ASP:HA	1:A:450:ASN:OD1	1.99	0.61
1:A:593:ASN:HB2	1:A:623:ASP:OD2	2.02	0.60
1:A:187:ALA:HB1	1:A:192:ILE:O	2.01	0.60
1:A:577:GLN:NE2	1:A:581:LYS:HE2	2.16	0.60
1:A:571:LEU:O	1:A:575:MET:HG3	2.01	0.60
1:B:184:LYS:HA	1:B:194:GLU:OE1	2.02	0.59
1:A:173:ILE:HG23	1:A:178:VAL:HG21	1.85	0.59
1:B:86:LYS:HG2	1:B:87:LYS:N	2.17	0.59
1:A:558:TRP:NE1	1:A:559:LYS:HE2	2.18	0.59
1:A:577:GLN:HE21	1:A:581:LYS:HE2	1.68	0.59
1:B:449:VAL:HG23	1:B:453:ILE:HD12	1.85	0.59
1:A:75:VAL:HG12	1:A:103:THR:HG22	1.84	0.59
1:B:584:LYS:HD2	1:B:585:GLU:H	1.68	0.58
1:B:665:ASP:O	1:B:668:GLU:HG2	2.02	0.58
1:B:419:LEU:HD23	1:B:420:ASP:N	2.18	0.58
1:B:99:TYR:CD1	1:B:134:PRO:HG3	2.39	0.58
1:A:508:LEU:HD23	1:A:513:LEU:HD12	1.84	0.58
1:B:378:GLU:HA	1:B:381:ASN:HD22	1.68	0.58
1:B:383:LEU:HB3	1:B:391:LEU:CD1	2.32	0.58
1:B:544:ILE:HD11	1:B:562:ILE:HD13	1.86	0.57
1:A:613:GLN:HB2	1:A:637:GLN:HB3	1.86	0.57
1:B:426:LYS:HG2	1:B:452:ASN:OD1	2.05	0.57
1:A:613:GLN:CB	1:A:637:GLN:HB3	2.34	0.57
1:B:143:HIS:ND1	1:B:302:VAL:HG21	2.20	0.57
1:A:29:GLU:HA	1:A:32:ASN:HD22	1.70	0.57
1:B:88:VAL:O	1:B:88:VAL:HG23	2.05	0.57
1:B:502:GLN:NE2	1:B:502:GLN:HA	2.20	0.57

*Continued on next page...*

*Continued from previous page...*

Atom-1	Atom-2	Interatomic distance (Å)	Clash overlap (Å)
1:A:421:ASP:OD1	1:A:422:LYS:HG3	2.05	0.56
1:B:325:GLN:OE1	1:B:551:LYS:HG2	2.05	0.56
1:A:406:LYS:HD3	1:A:467:PHE:CD1	2.40	0.56
1:A:42:PHE:HB3	1:A:63:THR:HA	1.87	0.56
1:A:99:TYR:CD1	1:A:134:PRO:HG3	2.40	0.56
1:B:226:ASP:O	1:B:230:LYS:HG2	2.05	0.56
1:B:408:LEU:CD2	1:B:534:ILE:HG21	2.35	0.56
1:A:327:THR:HB	1:A:356:GLU:HB3	1.88	0.56
1:B:619:SER:O	1:B:620:TYR:HB3	2.05	0.56
1:A:344:TYR:CD1	1:A:344:TYR:C	2.80	0.55
1:B:633:VAL:HB	1:B:645:ASN:HD21	1.72	0.55
1:A:30:ILE:HD11	1:A:93:LYS:HE3	1.87	0.55
1:A:180:LYS:HG3	1:A:183:TYR:CE2	2.42	0.55
1:A:615:GLY:HA3	1:A:645:ASN:HD21	1.72	0.55
1:B:41:ASN:O	1:B:45:VAL:HG23	2.07	0.55
1:A:598:SER:HB3	1:A:617:PHE:CD1	2.42	0.54
1:B:564:SER:O	1:B:568:ILE:HG13	2.06	0.54
1:B:102:LYS:HG3	1:B:107:ASN:OD1	2.06	0.54
1:A:491:ASP:HA	1:A:500:ASN:ND2	2.22	0.54
1:B:309:ILE:N	1:B:309:ILE:HD12	2.22	0.54
1:A:267:LYS:O	1:A:270:LYS:HG3	2.08	0.54
1:B:182:ASP:HB3	1:B:231:PHE:HD1	1.72	0.54
1:B:491:ASP:HA	1:B:500:ASN:OD1	2.07	0.54
1:A:61:GLU:OE1	1:A:65:ARG:HD2	2.08	0.54
1:A:33:THR:O	1:A:36:ALA:HB3	2.07	0.54
1:A:37:ILE:HD13	1:A:131:VAL:HG13	1.90	0.54
1:B:33:THR:O	1:B:36:ALA:HB3	2.08	0.53
1:A:224:LEU:HA	1:A:227:PHE:HB3	1.91	0.53
1:B:143:HIS:HB3	1:B:145:GLU:OE2	2.09	0.53
1:A:398:THR:HG21	1:A:500:ASN:O	2.09	0.53
1:B:251:HIS:CD2	1:B:362:SER:HB3	2.44	0.53
1:B:430:LYS:HG2	1:B:448:VAL:CG1	2.39	0.53
1:B:587:ILE:HG12	1:B:587:ILE:O	2.09	0.53
1:B:658:GLU:O	1:B:661:ASN:HB2	2.07	0.53
1:B:345:GLY:HA3	1:B:632:ASN:O	2.09	0.52
1:B:431:GLY:HA2	1:B:444:THR:HG22	1.91	0.52
1:A:180:LYS:HA	1:A:183:TYR:CE1	2.44	0.52
1:A:540:ASN:HB3	1:A:543:ASN:O	2.09	0.52
1:A:614:ILE:HD12	1:A:634:LYS:HG3	1.92	0.52
1:A:173:ILE:HG23	1:A:178:VAL:CG2	2.40	0.52
1:A:559:LYS:CB	1:A:562:ILE:HD11	2.38	0.52

*Continued on next page...*

*Continued from previous page...*

Atom-1	Atom-2	Interatomic distance (Å)	Clash overlap (Å)
1:A:68:LYS:HB3	1:B:305:ASN:ND2	2.25	0.52
1:B:354:THR:OG1	1:B:356:GLU:HG3	2.09	0.52
1:B:88:VAL:HG22	1:B:92:LYS:HB2	1.92	0.52
1:B:353:GLN:H	1:B:353:GLN:CD	2.13	0.52
1:A:100:LYS:HA	1:A:108:ILE:O	2.10	0.52
1:B:430:LYS:HG2	1:B:448:VAL:HG11	1.91	0.52
1:B:510:ASN:HD21	1:B:512:ILE:HB	1.75	0.52
1:B:378:GLU:HA	1:B:381:ASN:ND2	2.25	0.51
1:B:431:GLY:O	1:B:432:TRP:HB2	2.09	0.51
1:A:504:SER:OG	1:A:507:ASN:HA	2.09	0.51
1:B:471:ALA:HB1	1:B:514:LEU:CD2	2.41	0.51
1:B:573:ASP:O	1:B:576:GLN:HB3	2.10	0.51
1:A:138:LYS:N	1:A:138:LYS:HD2	2.13	0.51
1:A:184:LYS:HG3	1:A:185:ALA:N	2.26	0.51
1:A:614:ILE:CD1	1:A:634:LYS:HG3	2.40	0.51
1:A:157:ARG:HD3	1:A:666:ILE:O	2.11	0.51
1:A:132:ILE:HB	1:A:136:MET:CE	2.41	0.51
1:B:465:ILE:O	1:B:469:ARG:HG3	2.10	0.51
1:A:306:SER:OG	1:A:308:THR:HG23	2.11	0.51
1:A:516:ASP:HA	1:A:519:TYR:CE2	2.46	0.51
1:B:624:ASN:OD1	1:B:663:LYS:HE2	2.11	0.51
1:A:143:HIS:HB3	1:A:145:GLU:OE2	2.11	0.50
1:A:639:LYS:HD3	1:A:644:TYR:CD1	2.47	0.50
1:B:287:TYR:CZ	1:B:550:LEU:HD11	2.46	0.50
1:B:256:VAL:H	1:B:372:MET:HE2	1.77	0.50
1:B:466:PHE:O	1:B:470:VAL:HG23	2.12	0.50
1:B:194:GLU:HG2	1:B:198:LYS:NZ	2.27	0.50
1:B:427:ILE:HD12	1:B:453:ILE:HG13	1.93	0.50
1:A:256:VAL:O	1:A:372:MET:HG2	2.12	0.50
1:B:256:VAL:HG22	1:B:372:MET:CE	2.41	0.50
1:A:496:TYR:CD2	1:A:497:PRO:HD2	2.47	0.50
1:A:76:LYS:HE3	1:A:104:ASN:OD1	2.12	0.50
1:B:190:LEU:O	1:B:191:SER:HB2	2.12	0.50
1:A:263:GLU:HB3	1:A:269:TYR:CD1	2.47	0.49
1:A:269:TYR:O	1:A:272:TYR:HB2	2.13	0.49
1:A:353:GLN:H	1:A:353:GLN:CD	2.15	0.49
1:B:380:TYR:O	1:B:380:TYR:HD2	1.95	0.49
1:A:224:LEU:HD12	1:A:224:LEU:N	2.27	0.49
1:A:437:SER:C	1:A:439:GLY:H	2.14	0.49
1:A:480:GLU:HB2	1:A:508:LEU:HD12	1.92	0.49
1:A:527:ASN:ND2	1:A:528:PRO:HD2	2.27	0.49

*Continued on next page...*

*Continued from previous page...*

Atom-1	Atom-2	Interatomic distance (Å)	Clash overlap (Å)
1:B:446:TYR:HB3	2:B:701:7EP:HACB	1.94	0.49
1:A:544:ILE:HG13	1:A:562:ILE:HG13	1.93	0.49
1:B:537:ALA:HB2	1:B:562:ILE:HD11	1.93	0.49
1:A:108:ILE:HD13	1:A:313:LEU:HD13	1.94	0.49
1:B:99:TYR:HB2	1:B:112:VAL:HG22	1.94	0.49
1:A:344:TYR:HA	1:A:364:PRO:HD3	1.94	0.48
1:A:262:GLU:OE1	1:A:262:GLU:HA	2.13	0.48
1:A:175:PRO:HB2	1:A:208:ASP:HA	1.95	0.48
1:B:384:THR:HG23	1:B:385:GLU:HG3	1.95	0.48
1:B:46:TYR:O	1:B:54:LYS:HD3	2.14	0.48
1:B:647:LYS:O	1:B:651:LYS:HG3	2.13	0.48
1:A:368:VAL:HG22	5:A:836:HOH:O	2.13	0.48
1:A:453:ILE:HG23	1:A:457:GLN:HG3	1.96	0.48
1:B:180:LYS:HA	1:B:183:TYR:CD1	2.48	0.48
1:B:521:GLN:HG2	1:B:521:GLN:O	2.13	0.48
1:B:412:ILE:HG23	1:B:482:GLY:HA3	1.96	0.48
1:B:445:ARG:HA	1:B:464:ASN:HD22	1.79	0.48
1:B:589:ARG:HD2	1:B:591:TYR:CE2	2.49	0.48
1:A:287:TYR:CZ	1:A:550:LEU:HD11	2.49	0.48
1:B:329:ASP:OD1	1:B:331:LYS:HG2	2.13	0.47
1:B:597:LYS:O	1:B:617:PHE:HA	2.14	0.47
1:B:88:VAL:CG2	1:B:92:LYS:HB2	2.44	0.47
1:A:481:LYS:NZ	1:A:481:LYS:HB2	2.29	0.47
1:A:327:THR:OG1	1:A:549:LEU:HA	2.14	0.47
1:B:173:ILE:HG23	1:B:178:VAL:HB	1.95	0.47
1:A:72:SER:HB2	1:B:305:ASN:HB3	1.95	0.47
1:A:304:ASP:O	1:A:306:SER:N	2.46	0.47
1:A:601:ALA:O	1:A:614:ILE:HG12	2.14	0.47
1:B:147:LEU:HD21	1:B:298:ARG:NH1	2.29	0.47
1:B:408:LEU:O	1:B:412:ILE:HG13	2.15	0.47
1:B:624:ASN:O	1:B:626:ASN:N	2.36	0.47
1:A:331:LYS:HE3	1:A:668:GLU:OXT	2.14	0.47
1:A:613:GLN:HG2	1:A:637:GLN:HA	1.97	0.47
1:B:449:VAL:HG23	1:B:453:ILE:CD1	2.45	0.47
1:A:352:PRO:HG3	1:A:628:MET:HG3	1.96	0.47
1:A:511:GLU:O	1:A:514:LEU:HD23	2.15	0.47
1:A:579:VAL:HG13	1:A:587:ILE:HG23	1.96	0.47
1:A:128:ASP:OD2	1:A:128:ASP:C	2.52	0.47
1:B:510:ASN:HD22	1:B:513:LEU:N	2.05	0.47
1:B:207:GLN:HB2	1:B:210:THR:OG1	2.14	0.47
1:B:376:SER:HB3	1:B:379:GLU:CG	2.45	0.47

*Continued on next page...*

*Continued from previous page...*

Atom-1	Atom-2	Interatomic distance (Å)	Clash overlap (Å)
1:B:378:GLU:O	1:B:382:LYS:HG2	2.15	0.47
1:B:514:LEU:O	1:B:514:LEU:HD23	2.15	0.46
1:A:369:TYR:HB2	1:A:370:PRO:HD3	1.97	0.46
1:B:207:GLN:HG3	4:B:707:CL:CL	2.52	0.46
1:B:331:LYS:HE2	1:B:668:GLU:HG3	1.96	0.46
1:A:252:LEU:HD22	1:A:283:LEU:HG	1.96	0.46
1:B:369:TYR:HB2	1:B:370:PRO:HD3	1.97	0.46
1:B:566:GLU:HG3	1:B:567:ASN:N	2.30	0.46
1:A:105:TYR:O	1:A:314:ILE:HG21	2.16	0.46
1:A:620:TYR:HB3	1:A:628:MET:HG2	1.96	0.46
1:B:222:GLU:C	1:B:224:LEU:H	2.19	0.46
1:A:382:LYS:C	1:A:382:LYS:HD3	2.35	0.46
1:B:455:LEU:O	1:B:459:ILE:HG13	2.16	0.46
1:A:99:TYR:CD1	1:A:112:VAL:HG11	2.45	0.45
1:A:345:GLY:HA3	1:A:632:ASN:O	2.16	0.45
1:A:380:TYR:O	1:A:384:THR:HG23	2.17	0.45
1:A:603:LEU:H	1:A:603:LEU:HD23	1.80	0.45
1:B:65:ARG:N	1:B:66:PRO:CD	2.79	0.45
1:A:495:ASP:OD1	1:A:548:HIS:HB2	2.17	0.45
1:B:204:ASN:OD1	1:B:205:TRP:N	2.48	0.45
1:B:389:GLU:N	1:B:390:PRO:HD3	2.31	0.45
1:B:256:VAL:HG22	1:B:372:MET:HE1	1.98	0.45
1:A:173:ILE:HG13	1:A:214:LEU:HD11	1.97	0.45
1:B:29:GLU:OE2	1:B:123:TRP:HB2	2.16	0.45
1:A:91:ASN:ND2	1:A:118:LYS:HD3	2.32	0.45
1:A:425:TYR:CE1	1:A:469:ARG:HB2	2.52	0.45
1:A:566:GLU:HG3	1:A:567:ASN:N	2.32	0.45
1:A:598:SER:HB3	1:A:617:PHE:CE1	2.51	0.45
1:B:219:LYS:HB2	1:B:219:LYS:NZ	2.32	0.45
1:A:615:GLY:HA3	1:A:645:ASN:ND2	2.30	0.44
1:A:526:ILE:HG22	1:A:527:ASN:N	2.31	0.44
1:B:259:ILE:HD13	1:B:264:LEU:HD23	1.99	0.44
1:A:179:SER:OG	1:A:181:LYS:HG2	2.17	0.44
1:A:613:GLN:HG2	1:A:637:GLN:CA	2.47	0.44
1:A:174:VAL:O	1:A:175:PRO:C	2.56	0.44
1:A:397:ILE:HG22	1:A:499:TYR:CE2	2.53	0.44
1:A:172:GLY:HA2	1:A:214:LEU:HG	2.00	0.44
1:A:302:VAL:CG1	1:A:307:ASN:HA	2.47	0.44
1:A:223:TYR:CD1	1:A:224:LEU:HD12	2.53	0.44
1:A:363:THR:HA	1:A:364:PRO:C	2.36	0.44
1:B:169:TYR:O	1:B:216:THR:HA	2.18	0.44

*Continued on next page...*

*Continued from previous page...*

Atom-1	Atom-2	Interatomic distance (Å)	Clash overlap (Å)
1:B:247:LYS:HB3	1:B:365:SER:HB3	2.00	0.44
1:A:305:ASN:HB3	1:B:72:SER:HB3	1.99	0.44
1:B:251:HIS:HE1	1:B:390:PRO:O	2.01	0.43
1:B:462:SER:HB3	2:B:701:7EP:HAC	2.00	0.43
1:A:453:ILE:HG23	1:A:457:GLN:CG	2.48	0.43
1:B:182:ASP:HB3	1:B:231:PHE:CD1	2.53	0.43
1:B:105:TYR:O	1:B:314:ILE:HG21	2.18	0.43
1:A:540:ASN:HA	1:A:540:ASN:HD22	1.66	0.43
1:B:99:TYR:CG	1:B:134:PRO:HG3	2.54	0.43
1:A:130:SER:HA	1:A:133:ILE:O	2.18	0.43
1:A:486:LEU:HD23	1:A:562:ILE:HG23	2.01	0.43
1:B:29:GLU:O	1:B:32:ASN:HB2	2.17	0.43
1:B:87:LYS:HA	1:B:93:LYS:HA	2.00	0.43
1:B:180:LYS:HA	1:B:183:TYR:CE1	2.54	0.43
1:B:407:ILE:HG13	1:B:535:TYR:CE2	2.54	0.43
1:A:416:ASN:O	1:A:417:LYS:HB2	2.18	0.43
1:A:510:ASN:OD1	1:A:512:ILE:N	2.50	0.43
1:A:511:GLU:HA	1:A:514:LEU:CD2	2.48	0.43
1:A:617:PHE:HE2	1:A:619:SER:HB3	1.83	0.43
1:A:85:ILE:HG12	1:A:95:VAL:HG22	2.01	0.43
1:B:193:SER:O	1:B:196:TYR:HB3	2.19	0.43
1:B:352:PRO:HA	1:B:536:SER:HB2	2.01	0.43
1:B:645:ASN:O	1:B:648:ILE:HB	2.18	0.43
1:A:180:LYS:HA	1:A:183:TYR:CD1	2.54	0.42
1:A:367:ASP:O	1:A:370:PRO:HD2	2.18	0.42
1:A:300:THR:HG22	1:A:312:THR:HA	2.00	0.42
1:B:175:PRO:HG3	1:B:201:MET:HE3	2.01	0.42
1:B:617:PHE:CE2	1:B:619:SER:HB3	2.54	0.42
1:A:41:ASN:O	1:A:45:VAL:HG23	2.19	0.42
1:A:595:ILE:HD11	1:A:620:TYR:CZ	2.53	0.42
1:B:132:ILE:HD12	1:B:136:MET:CE	2.49	0.42
1:A:302:VAL:HG11	1:A:307:ASN:HA	2.02	0.42
1:A:403:SER:O	1:A:406:LYS:HG3	2.19	0.42
1:A:593:ASN:HB3	1:A:622:LYS:HB3	2.00	0.42
1:B:327:THR:HG23	1:B:549:LEU:C	2.40	0.42
1:A:424:SER:HA	1:A:453:ILE:O	2.20	0.42
1:B:328:ILE:HD13	1:B:357:LEU:O	2.20	0.42
1:B:207:GLN:H	1:B:210:THR:HB	1.84	0.42
1:A:74:GLY:HA3	1:A:104:ASN:ND2	2.34	0.42
1:B:187:ALA:HB2	1:B:197:ILE:HD12	2.02	0.42
1:B:419:LEU:HD12	1:B:470:VAL:CG1	2.50	0.42

*Continued on next page...*



*Continued from previous page...*

Atom-1	Atom-2	Interatomic distance (Å)	Clash overlap (Å)
1:B:46:TYR:CE2	1:B:59:GLU:HG3	2.55	0.42
1:A:93:LYS:HG3	1:A:123:TRP:CH2	2.55	0.42
1:B:406:LYS:HD3	1:B:467:PHE:CE1	2.55	0.42
1:B:502:GLN:HE21	1:B:502:GLN:CA	2.28	0.42
1:A:179:SER:HB3	1:A:182:ASP:OD1	2.20	0.41
1:A:39:ASP:O	1:A:40:LYS:HB2	2.20	0.41
1:B:300:THR:HG22	1:B:312:THR:HA	2.02	0.41
1:B:358:LEU:HD12	1:B:627:MET:HB3	2.01	0.41
1:A:92:LYS:HG2	1:A:117:VAL:HG12	2.02	0.41
1:A:112:VAL:HG13	1:A:134:PRO:HB3	2.03	0.41
1:A:173:ILE:CD1	1:A:214:LEU:HD11	2.50	0.41
1:B:262:GLU:HG3	1:B:263:GLU:N	2.35	0.41
1:B:251:HIS:CE1	1:B:390:PRO:O	2.73	0.41
1:B:29:GLU:OE2	1:B:123:TRP:HD1	2.03	0.41
1:A:375:MET:HB2	1:A:379:GLU:OE2	2.19	0.41
1:B:199:GLN:O	1:B:202:ASP:HB3	2.20	0.41
1:B:73:LEU:O	1:B:103:THR:HB	2.21	0.41
1:A:642:ALA:HA	1:A:645:ASN:HD22	1.84	0.41
1:B:172:GLY:HA3	1:B:212:VAL:O	2.20	0.41
1:B:384:THR:HG23	1:B:385:GLU:N	2.35	0.41
1:B:620:TYR:HB2	1:B:627:MET:O	2.21	0.41
1:A:91:ASN:O	1:A:117:VAL:HA	2.21	0.41
1:B:446:TYR:C	1:B:446:TYR:CD1	2.94	0.41
1:A:603:LEU:H	1:A:603:LEU:CD2	2.34	0.41
1:A:65:ARG:N	1:A:66:PRO:CD	2.83	0.41
1:A:410:ALA:O	1:A:414:LEU:HG	2.21	0.41
1:A:502:GLN:O	1:A:524:ILE:HA	2.21	0.41
1:B:173:ILE:CG2	1:B:178:VAL:HB	2.50	0.41
1:A:544:ILE:O	1:A:558:TRP:HB3	2.21	0.41
1:A:637:GLN:H	1:A:637:GLN:CD	2.24	0.41
1:B:174:VAL:HB	1:B:177:ASN:HD22	1.86	0.41
1:B:263:GLU:OE2	1:B:278:ILE:HD11	2.21	0.41
1:A:73:LEU:O	1:A:103:THR:HB	2.21	0.40
1:B:99:TYR:HD1	1:B:112:VAL:HG11	1.87	0.40
1:A:203:GLN:HB2	1:A:206:VAL:HG23	2.04	0.40
1:B:65:ARG:HA	1:B:68:LYS:HE3	2.03	0.40
1:A:354:THR:OG1	1:A:356:GLU:HG3	2.22	0.40
1:B:550:LEU:HB2	1:B:553:THR:OG1	2.22	0.40
1:A:61:GLU:O	1:A:66:PRO:HD3	2.21	0.40
1:B:86:LYS:CB	1:B:86:LYS:NZ	2.85	0.40
1:A:259:ILE:HG13	1:A:263:GLU:OE2	2.22	0.40

*Continued on next page...*



*Continued from previous page...*

Atom-1	Atom-2	Interatomic distance (Å)	Clash overlap (Å)
1:B:156:ASP:HB2	1:B:328:ILE:O	2.22	0.40

There are no symmetry-related clashes.

## 5.3 Torsion angles [i](#)

### 5.3.1 Protein backbone [i](#)

In the following table, the Percentiles column shows the percent Ramachandran outliers of the chain as a percentile score with respect to all X-ray entries followed by that with respect to entries of similar resolution.

The Analysed column shows the number of residues for which the backbone conformation was analysed, and the total number of residues.

Mol	Chain	Analysed	Favoured	Allowed	Outliers	Percentiles	
1	A	626/646 (97%)	580 (93%)	43 (7%)	3 (0%)	32	58
1	B	597/646 (92%)	537 (90%)	52 (9%)	8 (1%)	14	29
All	All	1223/1292 (95%)	1117 (91%)	95 (8%)	11 (1%)	20	40

All (11) Ramachandran outliers are listed below:

Mol	Chain	Res	Type
1	A	176	LYS
1	B	432	TRP
1	B	620	TYR
1	A	175	PRO
1	B	305	ASN
1	B	340	MET
1	A	476	SER
1	B	28	LYS
1	B	625	PRO
1	B	175	PRO
1	B	397	ILE

### 5.3.2 Protein sidechains [i](#)

In the following table, the Percentiles column shows the percent sidechain outliers of the chain as a percentile score with respect to all X-ray entries followed by that with respect to entries of similar resolution.

The Analysed column shows the number of residues for which the sidechain conformation was analysed, and the total number of residues.

Mol	Chain	Analysed	Rotameric	Outliers	Percentiles	
1	A	565/576 (98%)	544 (96%)	21 (4%)	39	66
1	B	546/576 (95%)	531 (97%)	15 (3%)	50	77
All	All	1111/1152 (96%)	1075 (97%)	36 (3%)	44	72

All (36) residues with a non-rotameric sidechain are listed below:

Mol	Chain	Res	Type
1	A	77	ASP
1	A	99	TYR
1	A	125	LEU
1	A	138	LYS
1	A	156	ASP
1	A	175	PRO
1	A	177	ASN
1	A	204	ASN
1	A	208	ASP
1	A	245	LEU
1	A	252	LEU
1	A	344	TYR
1	A	367	ASP
1	A	403	SER
1	A	419	LEU
1	A	540	ASN
1	A	554	LYS
1	A	573	ASP
1	A	613	GLN
1	A	632	ASN
1	A	663	LYS
1	B	32	ASN
1	B	94	ARG
1	B	99	TYR
1	B	102	LYS
1	B	125	LEU
1	B	252	LEU
1	B	380	TYR
1	B	463	ASP
1	B	570	LEU
1	B	584	LYS
1	B	623	ASP
1	B	632	ASN

*Continued on next page...*

*Continued from previous page...*

Mol	Chain	Res	Type
1	B	659	ASN
1	B	661	ASN
1	B	662	LYS

Some sidechains can be flipped to improve hydrogen bonding and reduce clashes. All (36) such sidechains are listed below:

Mol	Chain	Res	Type
1	A	32	ASN
1	A	91	ASN
1	A	207	GLN
1	A	232	HIS
1	A	416	ASN
1	A	433	GLN
1	A	457	GLN
1	A	500	ASN
1	A	505	ASN
1	A	507	ASN
1	A	540	ASN
1	A	567	ASN
1	A	580	ASN
1	A	624	ASN
1	A	632	ASN
1	A	645	ASN
1	B	32	ASN
1	B	41	ASN
1	B	44	GLN
1	B	71	ASN
1	B	177	ASN
1	B	200	GLN
1	B	251	HIS
1	B	260	ASN
1	B	305	ASN
1	B	338	ASN
1	B	381	ASN
1	B	396	GLN
1	B	433	GLN
1	B	502	GLN
1	B	510	ASN
1	B	540	ASN
1	B	545	ASN
1	B	626	ASN
1	B	632	ASN

*Continued on next page...*

*Continued from previous page...*

Mol	Chain	Res	Type
1	B	645	ASN

### 5.3.3 RNA [i](#)

There are no RNA molecules in this entry.

## 5.4 Non-standard residues in protein, DNA, RNA chains [i](#)

There are no non-standard protein/DNA/RNA residues in this entry.

## 5.5 Carbohydrates [i](#)

There are no carbohydrates in this entry.

## 5.6 Ligand geometry [i](#)

Of 11 ligands modelled in this entry, 9 are monoatomic - leaving 2 for Mogul analysis.

In the following table, the Counts columns list the number of bonds (or angles) for which Mogul statistics could be retrieved, the number of bonds (or angles) that are observed in the model and the number of bonds (or angles) that are defined in the chemical component dictionary. The Link column lists molecule types, if any, to which the group is linked. The Z score for a bond length (or angle) is the number of standard deviations the observed value is removed from the expected value. A bond length (or angle) with  $|Z| > 2$  is considered an outlier worth inspection. RMSZ is the root-mean-square of all Z scores of the bond lengths (or angles).

Mol	Type	Chain	Res	Link	Bond lengths			Bond angles		
					Counts	RMSZ	$\# Z  > 2$	Counts	RMSZ	$\# Z  > 2$
2	7EP	A	701	1	20,27,27	2.16	8 (40%)	27,39,39	1.69	6 (22%)
2	7EP	B	701	1	20,27,27	2.39	8 (40%)	27,39,39	1.68	7 (25%)

In the following table, the Chirals column lists the number of chiral outliers, the number of chiral centers analysed, the number of these observed in the model and the number defined in the chemical component dictionary. Similar counts are reported in the Torsion and Rings columns. '-' means no outliers of that kind were identified.

Mol	Type	Chain	Res	Link	Chirals	Torsions	Rings
2	7EP	A	701	1	-	0/12/37/37	0/2/2/2
2	7EP	B	701	1	-	0/12/37/37	0/2/2/2

All (16) bond length outliers are listed below:

Mol	Chain	Res	Type	Atoms	Z	Observed(Å)	Ideal(Å)
2	A	701	7EP	CAK-CAT	2.05	1.43	1.39
2	A	701	7EP	CAV-CAU	2.06	1.44	1.40
2	A	701	7EP	CAV-CAT	2.17	1.44	1.40
2	A	701	7EP	CAL-CAU	2.31	1.44	1.39
2	B	701	7EP	CAV-CAU	2.31	1.44	1.40
2	B	701	7EP	CAK-CAT	2.31	1.44	1.39
2	B	701	7EP	CAL-CAU	2.38	1.44	1.39
2	B	701	7EP	OAO-CAT	2.51	1.41	1.37
2	A	701	7EP	OAO-CAT	2.56	1.41	1.37
2	A	701	7EP	CA-N	2.60	1.50	1.46
2	B	701	7EP	CAV-CAT	3.00	1.45	1.40
2	B	701	7EP	CA-N	3.54	1.51	1.46
2	B	701	7EP	CA-C	4.66	1.56	1.50
2	A	701	7EP	CA-C	4.81	1.56	1.50
2	A	701	7EP	CAS-N	4.95	1.45	1.34
2	B	701	7EP	CAS-N	5.53	1.46	1.34

All (13) bond angle outliers are listed below:

Mol	Chain	Res	Type	Atoms	Z	Observed(°)	Ideal(°)
2	A	701	7EP	CAT-CAV-CAS	-3.00	115.12	121.60
2	A	701	7EP	CAL-CAU-CAV	-2.43	115.73	120.30
2	B	701	7EP	CAL-CAU-CAV	-2.30	115.98	120.30
2	B	701	7EP	CAT-CAV-CAS	-2.23	116.78	121.60
2	B	701	7EP	CAK-CAT-CAV	-2.09	116.38	120.30
2	A	701	7EP	CAK-CAT-CAV	-2.03	116.49	120.30
2	B	701	7EP	OAP-CAU-CAV	2.39	119.36	115.84
2	B	701	7EP	CAB-OAP-CAU	2.65	121.36	117.54
2	A	701	7EP	OAP-CAU-CAV	2.78	119.93	115.84
2	A	701	7EP	OAO-CAT-CAV	3.42	120.88	115.84
2	B	701	7EP	CAU-CAV-CAT	3.80	123.71	117.87
2	B	701	7EP	OAO-CAT-CAV	3.86	121.53	115.84
2	A	701	7EP	CAU-CAV-CAT	4.02	124.05	117.87

There are no chirality outliers.

There are no torsion outliers.

There are no ring outliers.

2 monomers are involved in 3 short contacts:

Mol	Chain	Res	Type	Clashes	Symm-Clashes
2	A	701	7EP	1	0
2	B	701	7EP	2	0

## 5.7 Other polymers [i](#)

There are no such residues in this entry.

## 5.8 Polymer linkage issues [i](#)

There are no chain breaks in this entry.

## 6 Fit of model and data ⓘ

### 6.1 Protein, DNA and RNA chains ⓘ

In the following table, the column labelled ‘#RSRZ> 2’ contains the number (and percentage) of RSRZ outliers, followed by percent RSRZ outliers for the chain as percentile scores relative to all X-ray entries and entries of similar resolution. The OWAB column contains the minimum, median, 95<sup>th</sup> percentile and maximum values of the occupancy-weighted average B-factor per residue. The column labelled ‘Q< 0.9’ lists the number of (and percentage) of residues with an average occupancy less than 0.9.

Mol	Chain	Analysed	<RSRZ>	#RSRZ>2		OWAB(Å <sup>2</sup> )	Q<0.9
1	A	632/646 (97%)	-0.03	14 (2%)	62 56	25, 56, 93, 122	0
1	B	609/646 (94%)	0.17	33 (5%)	26 20	32, 65, 101, 126	0
All	All	1241/1292 (96%)	0.07	47 (3%)	41 33	25, 60, 99, 126	0

All (47) RSRZ outliers are listed below:

Mol	Chain	Res	Type	RSRZ
1	B	267	LYS	5.8
1	B	436	LYS	4.5
1	B	204	ASN	4.2
1	A	602	GLU	3.8
1	A	603	LEU	3.7
1	B	264	LEU	3.5
1	B	585	GLU	3.1
1	B	272	TYR	3.0
1	B	205	TRP	3.0
1	A	601	ALA	3.0
1	B	409	THR	3.0
1	B	430	LYS	3.0
1	B	265	LYS	2.9
1	B	223	TYR	2.8
1	B	446	TYR	2.7
1	B	387	LYS	2.7
1	A	260	ASN	2.7
1	A	436	LYS	2.6
1	B	28	LYS	2.6
1	B	198	LYS	2.6
1	B	644	TYR	2.6
1	B	661	ASN	2.6
1	B	633	VAL	2.6
1	B	400	SER	2.5

*Continued on next page...*

*Continued from previous page...*

Mol	Chain	Res	Type	RSRZ
1	A	441	TYR	2.5
1	B	476	SER	2.5
1	A	407	ILE	2.5
1	B	406	LYS	2.4
1	A	223	TYR	2.4
1	B	268	GLU	2.4
1	A	264	LEU	2.3
1	A	409	THR	2.3
1	A	405	GLN	2.3
1	B	131	VAL	2.3
1	B	86	LYS	2.3
1	B	518	GLY	2.2
1	B	535	TYR	2.2
1	B	407	ILE	2.2
1	A	442	ASN	2.2
1	A	613	GLN	2.2
1	B	222	GLU	2.2
1	B	184	LYS	2.2
1	B	408	LEU	2.1
1	B	523	GLU	2.1
1	B	597	LYS	2.1
1	A	518	GLY	2.1
1	B	417	LYS	2.0

## 6.2 Non-standard residues in protein, DNA, RNA chains [i](#)

There are no non-standard protein/DNA/RNA residues in this entry.

## 6.3 Carbohydrates [i](#)

There are no carbohydrates in this entry.

## 6.4 Ligands [i](#)

In the following table, the Atoms column lists the number of modelled atoms in the group and the number defined in the chemical component dictionary. LLDF column lists the quality of electron density of the group with respect to its neighbouring residues in protein, DNA or RNA chains. The B-factors column lists the minimum, median, 95<sup>th</sup> percentile and maximum values of B factors of atoms in the group. The column labelled 'Q < 0.9' lists the number of atoms with occupancy less than 0.9.



Mol	Type	Chain	Res	Atoms	RSCC	RSR	LLDF	B-factors( $\text{\AA}^2$ )	Q<0.9
2	7EP	B	701	26/26	0.72	0.36	1.15	59,73,83,86	26
4	CL	B	706	1/1	0.99	0.14	0.29	40,40,40,40	0
2	7EP	A	701	26/26	0.87	0.21	-0.08	52,56,69,73	0
3	CD	B	703	1/1	1.00	0.13	-0.47	46,46,46,46	0
3	CD	A	702	1/1	0.99	0.13	-0.79	42,42,42,42	0
3	CD	A	703	1/1	0.99	0.10	-0.98	54,54,54,54	0
4	CL	B	707	1/1	0.99	0.10	-1.03	47,47,47,47	0
3	CD	B	702	1/1	1.00	0.13	-1.11	46,46,46,46	0
4	CL	A	704	1/1	0.98	0.12	-1.78	40,40,40,40	0
4	CL	B	705	1/1	1.00	0.09	-4.35	38,38,38,38	0
3	CD	B	704	1/1	0.93	0.12	-	80,80,80,80	1

## 6.5 Other polymers [i](#)

There are no such residues in this entry.