



Full wwPDB X-ray Structure Validation Report ⓘ

Jan 15, 2018 – 02:06 PM EST

PDB ID : 4MYA
Title : Crystal Structure of the Inosine 5'-monophosphate Dehydrogenase with an Internal Deletion of the CBS Domain from Bacillus anthracis str. Ames complexed with inhibitor A110
Authors : Kim, Y.; Makowska-Grzyska, M.; Gu, M.; Gorla, S.K.; Hedstrom, L.; Anderson, W.F.; Joachimiak, A.; CSGID; Center for Structural Genomics of Infectious Diseases (CSGID)
Deposited on : 2013-09-27
Resolution : 1.90 Å(reported)

This is a Full wwPDB X-ray Structure Validation Report for a publicly released PDB entry.

We welcome your comments at validation@mail.wwpdb.org

A user guide is available at

<http://wwpdb.org/validation/2016/XrayValidationReportHelp>

with specific help available everywhere you see the ⓘ symbol.

The following versions of software and data (see [references ⓘ](#)) were used in the production of this report:

MolProbity : 4.02b-467
Mogul : 1.7.2 (RC1), CSD as538be (2017)
Xtriage (Phenix) : 1.9-1692
EDS : rb-20030736
Percentile statistics : 20161228.v01 (using entries in the PDB archive December 28th 2016)
Refmac : 5.8.0135
CCP4 : 6.5.0
Ideal geometry (proteins) : Engh & Huber (2001)
Ideal geometry (DNA, RNA) : Parkinson et al. (1996)
Validation Pipeline (wwPDB-VP) : rb-20030736

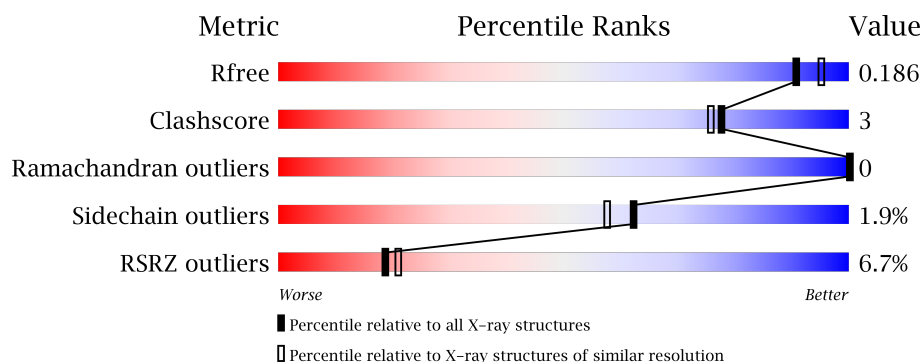
1 Overall quality at a glance

The following experimental techniques were used to determine the structure:

X-RAY DIFFRACTION

The reported resolution of this entry is 1.90 Å.

Percentile scores (ranging between 0-100) for global validation metrics of the entry are shown in the following graphic. The table shows the number of entries on which the scores are based.



Metric	Whole archive (#Entries)	Similar resolution (#Entries, resolution range(Å))
R_{free}	100719	5047 (1.90-1.90)
Clashscore	112137	5731 (1.90-1.90)
Ramachandran outliers	110173	5669 (1.90-1.90)
Sidechain outliers	110143	5670 (1.90-1.90)
RSRZ outliers	101464	5100 (1.90-1.90)

The table below summarises the geometric issues observed across the polymeric chains and their fit to the electron density. The red, orange, yellow and green segments on the lower bar indicate the fraction of residues that contain outliers for ≥ 3 , 2, 1 and 0 types of geometric quality criteria. A grey segment represents the fraction of residues that are not modelled. The numeric value for each fraction is indicated below the corresponding segment, with a dot representing fractions $\leq 5\%$. The upper red bar (where present) indicates the fraction of residues that have poor fit to the electron density. The numeric value is given above the bar.

Mol	Chain	Length	Quality of chain
1	A	384	<div> <div>5%</div> <div> <div></div> <div>81%</div> <div>10%</div> <div>9%</div> </div> </div>
1	B	384	<div> <div>7%</div> <div> <div></div> <div>84%</div> <div>7%</div> <div>9%</div> </div> </div>

The following table lists non-polymeric compounds, carbohydrate monomers and non-standard residues in protein, DNA, RNA chains that are outliers for geometric or electron-density-fit criteria:

Mol	Type	Chain	Res	Chirality	Geometry	Clashes	Electron density
4	GOL	A	502	-	-	-	X
4	GOL	A	503	-	-	-	X

2 Entry composition

There are 5 unique types of molecules in this entry. The entry contains 5859 atoms, of which 0 are hydrogens and 0 are deuteriums.

In the tables below, the ZeroOcc column contains the number of atoms modelled with zero occupancy, the AltConf column contains the number of residues with at least one atom in alternate conformation and the Trace column contains the number of residues modelled with at most 2 atoms.

- Molecule 1 is a protein called Inosine-5'-monophosphate dehydrogenase.

Mol	Chain	Residues	Atoms					ZeroOcc	AltConf	Trace
1	A	349	Total	C	N	O	S	0	5	0
			2609	1637	460	496	16			
1	B	348	Total	C	N	O	S	0	10	0
			2643	1659	465	503	16			

There are 52 discrepancies between the modelled and reference sequences:

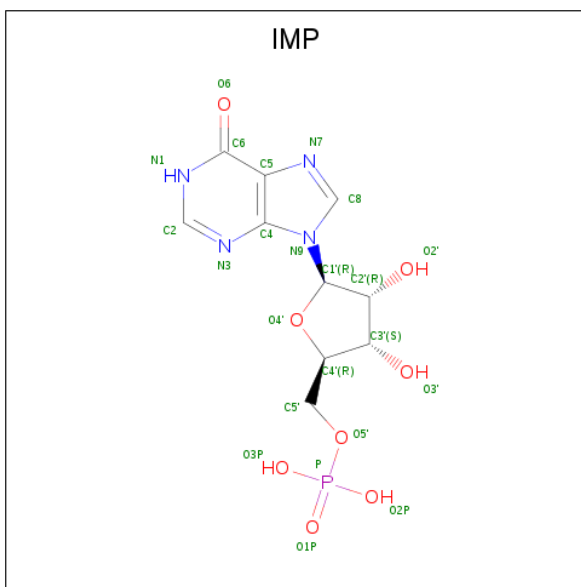
Chain	Residue	Modelled	Actual	Comment	Reference
A	-23	MET	-	EXPRESSION TAG	UNP Q81W29
A	-22	HIS	-	EXPRESSION TAG	UNP Q81W29
A	-21	HIS	-	EXPRESSION TAG	UNP Q81W29
A	-20	HIS	-	EXPRESSION TAG	UNP Q81W29
A	-19	HIS	-	EXPRESSION TAG	UNP Q81W29
A	-18	HIS	-	EXPRESSION TAG	UNP Q81W29
A	-17	HIS	-	EXPRESSION TAG	UNP Q81W29
A	-16	SER	-	EXPRESSION TAG	UNP Q81W29
A	-15	SER	-	EXPRESSION TAG	UNP Q81W29
A	-14	GLY	-	EXPRESSION TAG	UNP Q81W29
A	-13	VAL	-	EXPRESSION TAG	UNP Q81W29
A	-12	ASP	-	EXPRESSION TAG	UNP Q81W29
A	-11	LEU	-	EXPRESSION TAG	UNP Q81W29
A	-10	GLY	-	EXPRESSION TAG	UNP Q81W29
A	-9	THR	-	EXPRESSION TAG	UNP Q81W29
A	-8	GLU	-	EXPRESSION TAG	UNP Q81W29
A	-7	ASN	-	EXPRESSION TAG	UNP Q81W29
A	-6	LEU	-	EXPRESSION TAG	UNP Q81W29
A	-5	TYR	-	EXPRESSION TAG	UNP Q81W29
A	-4	PHE	-	EXPRESSION TAG	UNP Q81W29
A	-3	GLN	-	EXPRESSION TAG	UNP Q81W29
A	-2	SER	-	EXPRESSION TAG	UNP Q81W29
A	-1	ASN	-	EXPRESSION TAG	UNP Q81W29
A	0	ALA	-	EXPRESSION TAG	UNP Q81W29
A	92	GLY	-	LINKER	UNP Q81W29

Continued on next page...

Continued from previous page...

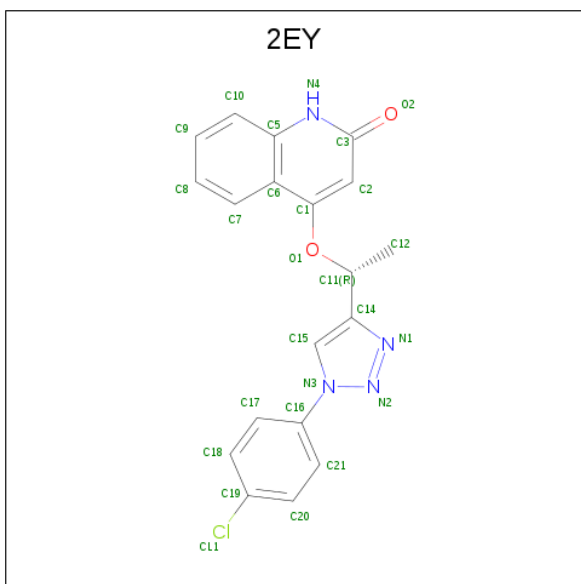
Chain	Residue	Modelled	Actual	Comment	Reference
A	220	GLY	-	LINKER	UNP Q81W29
B	-23	MET	-	EXPRESSION TAG	UNP Q81W29
B	-22	HIS	-	EXPRESSION TAG	UNP Q81W29
B	-21	HIS	-	EXPRESSION TAG	UNP Q81W29
B	-20	HIS	-	EXPRESSION TAG	UNP Q81W29
B	-19	HIS	-	EXPRESSION TAG	UNP Q81W29
B	-18	HIS	-	EXPRESSION TAG	UNP Q81W29
B	-17	HIS	-	EXPRESSION TAG	UNP Q81W29
B	-16	SER	-	EXPRESSION TAG	UNP Q81W29
B	-15	SER	-	EXPRESSION TAG	UNP Q81W29
B	-14	GLY	-	EXPRESSION TAG	UNP Q81W29
B	-13	VAL	-	EXPRESSION TAG	UNP Q81W29
B	-12	ASP	-	EXPRESSION TAG	UNP Q81W29
B	-11	LEU	-	EXPRESSION TAG	UNP Q81W29
B	-10	GLY	-	EXPRESSION TAG	UNP Q81W29
B	-9	THR	-	EXPRESSION TAG	UNP Q81W29
B	-8	GLU	-	EXPRESSION TAG	UNP Q81W29
B	-7	ASN	-	EXPRESSION TAG	UNP Q81W29
B	-6	LEU	-	EXPRESSION TAG	UNP Q81W29
B	-5	TYR	-	EXPRESSION TAG	UNP Q81W29
B	-4	PHE	-	EXPRESSION TAG	UNP Q81W29
B	-3	GLN	-	EXPRESSION TAG	UNP Q81W29
B	-2	SER	-	EXPRESSION TAG	UNP Q81W29
B	-1	ASN	-	EXPRESSION TAG	UNP Q81W29
B	0	ALA	-	EXPRESSION TAG	UNP Q81W29
B	92	GLY	-	LINKER	UNP Q81W29
B	220	GLY	-	LINKER	UNP Q81W29

- Molecule 2 is INOSINIC ACID (three-letter code: IMP) (formula: C₁₀H₁₃N₄O₈P).



Mol	Chain	Residues	Atoms					ZeroOcc	AltConf
2	A	1	Total	C	N	O	P	0	0
			23	10	4	8	1		
2	B	1	Total	C	N	O	P	0	0
			23	10	4	8	1		

- Molecule 3 is 4-{(1R)-1-[1-(4-chlorophenyl)-1H-1,2,3-triazol-4-yl]ethoxy}quinolin-2(1H)-one (three-letter code: 2EY) (formula: C₁₉H₁₅ClN₄O₂).



Mol	Chain	Residues	Atoms					ZeroOcc	AltConf
3	A	1	Total	C	Cl	N	O	0	0
			26	19	1	4	2		

Continued on next page...

Continued from previous page...

Mol	Chain	Residues	Atoms					ZeroOcc	AltConf
3	B	1	Total	C	Cl	N	O	0	0
			26	19	1	4	2		

- Molecule 4 is GLYCEROL (three-letter code: GOL) (formula: $C_3H_8O_3$).



Mol	Chain	Residues	Atoms			ZeroOcc	AltConf
4	A	1	Total	C	O	0	0
			6	3	3		
4	A	1	Total	C	O	0	0
			6	3	3		
4	B	1	Total	C	O	0	0
			6	3	3		

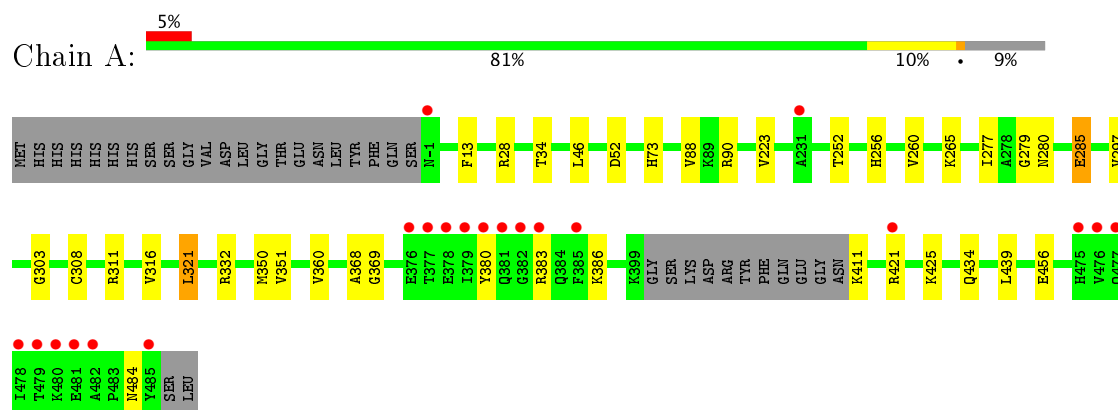
- Molecule 5 is water.

Mol	Chain	Residues	Atoms		ZeroOcc	AltConf
5	A	259	Total	O	0	0
			259	259		
5	B	232	Total	O	0	0
			232	232		

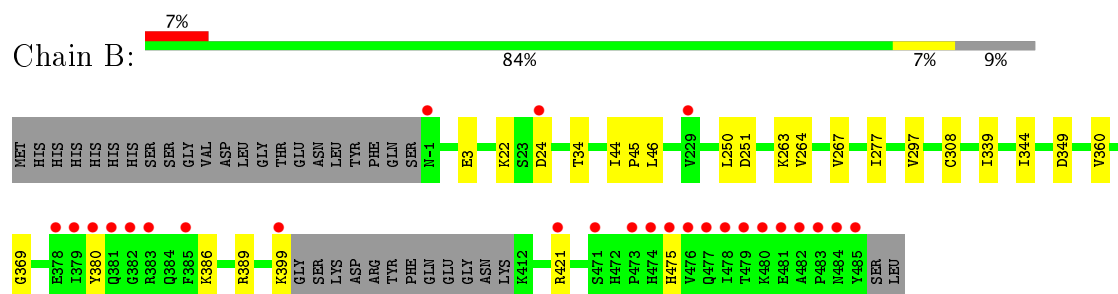
3 Residue-property plots [i](#)

These plots are drawn for all protein, RNA and DNA chains in the entry. The first graphic for a chain summarises the proportions of the various outlier classes displayed in the second graphic. The second graphic shows the sequence view annotated by issues in geometry and electron density. Residues are color-coded according to the number of geometric quality criteria for which they contain at least one outlier: green = 0, yellow = 1, orange = 2 and red = 3 or more. A red dot above a residue indicates a poor fit to the electron density ($RSRZ > 2$). Stretches of 2 or more consecutive residues without any outlier are shown as a green connector. Residues present in the sample, but not in the model, are shown in grey.

- Molecule 1: Inosine-5'-monophosphate dehydrogenase



- Molecule 1: Inosine-5'-monophosphate dehydrogenase



4 Data and refinement statistics

Property	Value	Source
Space group	P 4	Depositor
Cell constants a, b, c, α , β , γ	110.85Å 110.85Å 56.26Å 90.00° 90.00° 90.00°	Depositor
Resolution (Å)	49.58 – 1.90 49.57 – 1.90	Depositor EDS
% Data completeness (in resolution range)	98.2 (49.58-1.90) 98.3 (49.57-1.90)	Depositor EDS
R_{merge}	(Not available)	Depositor
R_{sym}	0.10	Depositor
$\langle I/\sigma(I) \rangle$ ¹	1.87 (at 1.90Å)	Xtriage
Refinement program	PHENIX (phenix.refine: 1.8.1_1161)	Depositor
R, R_{free}	0.147 , 0.184 0.147 , 0.186	Depositor DCC
R_{free} test set	2699 reflections (5.07%)	DCC
Wilson B-factor (Å ²)	16.8	Xtriage
Anisotropy	0.143	Xtriage
Bulk solvent k_{sol} (e/Å ³), B_{sol} (Å ²)	0.37 , 56.4	EDS
L-test for twinning ²	$\langle L \rangle = 0.50$, $\langle L^2 \rangle = 0.33$	Xtriage
Estimated twinning fraction	0.028 for h,-k,-l	Xtriage
F_o, F_c correlation	0.96	EDS
Total number of atoms	5859	wwPDB-VP
Average B, all atoms (Å ²)	24.0	wwPDB-VP

Xtriage's analysis on translational NCS is as follows: *The analyses of the Patterson function reveals a significant off-origin peak that is 22.40 % of the origin peak, indicating pseudo translational symmetry. The chance of finding a peak of this or larger height randomly in a structure without pseudo translational symmetry is equal to 5.7393e-03. The detected translational NCS is most likely also responsible for the elevated intensity ratio.*

¹ Intensities estimated from amplitudes.

² Theoretical values of $\langle |L| \rangle$, $\langle L^2 \rangle$ for acentric reflections are 0.5, 0.333 respectively for untwinned datasets, and 0.375, 0.2 for perfectly twinned datasets.

5 Model quality

5.1 Standard geometry

Bond lengths and bond angles in the following residue types are not validated in this section: GOL, 2EY, IMP

The Z score for a bond length (or angle) is the number of standard deviations the observed value is removed from the expected value. A bond length (or angle) with $|Z| > 5$ is considered an outlier worth inspection. RMSZ is the root-mean-square of all Z scores of the bond lengths (or angles).

Mol	Chain	Bond lengths		Bond angles	
		RMSZ	# Z >5	RMSZ	# Z >5
1	A	0.36	0/2646	0.53	0/3574
1	B	0.35	0/2679	0.54	0/3619
All	All	0.36	0/5325	0.53	0/7193

There are no bond length outliers.

There are no bond angle outliers.

There are no chirality outliers.

There are no planarity outliers.

5.2 Too-close contacts

In the following table, the Non-H and H(model) columns list the number of non-hydrogen atoms and hydrogen atoms in the chain respectively. The H(added) column lists the number of hydrogen atoms added and optimized by MolProbity. The Clashes column lists the number of clashes within the asymmetric unit, whereas Symm-Clashes lists symmetry related clashes.

Mol	Chain	Non-H	H(model)	H(added)	Clashes	Symm-Clashes
1	A	2609	0	2661	24	0
1	B	2643	0	2696	15	0
2	A	23	0	11	1	0
2	B	23	0	11	1	0
3	A	26	0	15	0	0
3	B	26	0	15	0	0
4	A	12	0	16	0	0
4	B	6	0	8	0	0
5	A	259	0	0	2	0
5	B	232	0	0	1	0
All	All	5859	0	5433	37	0

The all-atom clashscore is defined as the number of clashes found per 1000 atoms (including hydrogen atoms). The all-atom clashscore for this structure is 3.

All (37) close contacts within the same asymmetric unit are listed below, sorted by their clash magnitude.

Atom-1	Atom-2	Interatomic distance (Å)	Clash overlap (Å)
1:A:332[B]:ARG:NH2	1:A:456:GLU:OE2	2.22	0.70
1:B:34:THR:HG21	1:B:360[A]:VAL:HG12	1.79	0.64
1:A:434:GLN:HE21	1:A:484:ASN:HB3	1.68	0.57
1:A:90:ARG:HH22	1:B:22:LYS:HE2	1.69	0.57
1:A:265:LYS:NZ	5:A:828:HOH:O	2.36	0.56
1:A:256:HIS:HE1	1:A:285[A]:GLU:HG2	1.73	0.54
1:A:308:CYS:SG	2:A:500:IMP:H2	2.50	0.51
1:B:308:CYS:SG	2:B:500:IMP:H2	2.51	0.51
1:A:421:ARG:NE	5:A:817:HOH:O	2.43	0.50
1:B:389:ARG:HH22	1:B:399:LYS:HD2	1.76	0.49
1:A:46:LEU:HD21	1:A:350:MET:SD	2.52	0.49
1:A:256:HIS:CE1	1:A:285[A]:GLU:HG2	2.49	0.48
1:B:45:PRO:C	1:B:360[B]:VAL:HG23	2.35	0.47
1:A:369:GLY:HA2	1:A:386:LYS:HD3	1.97	0.47
1:A:252:THR:HG21	1:A:260:VAL:HG22	1.95	0.47
1:A:332[B]:ARG:HH22	1:A:456:GLU:CD	2.16	0.47
1:A:34:THR:HG21	1:A:360:VAL:CG1	2.45	0.46
1:A:303:GLY:HA3	1:A:311:ARG:HE	1.81	0.46
1:A:321:LEU:HA	1:A:321:LEU:HD12	1.77	0.45
1:B:263:LYS:O	1:B:267:VAL:HG23	2.17	0.45
1:A:368:ALA:O	1:A:425:LYS:NZ	2.46	0.45
1:A:13:PHE:HA	1:A:321:LEU:HD22	1.99	0.44
1:A:311:ARG:HG2	1:A:316:VAL:O	2.17	0.44
1:B:251:ASP:HB3	5:B:832:HOH:O	2.18	0.43
1:A:52:ASP:HA	1:A:73:HIS:CD2	2.54	0.43
1:B:344:ILE:HG23	1:B:349:ASP:HB2	2.01	0.43
1:A:277:ILE:HG12	1:A:297:VAL:HB	1.99	0.43
1:A:90:ARG:NH2	1:B:24[B]:ASP:OD2	2.52	0.42
1:B:44:ILE:HD12	1:B:46:LEU:HD12	2.00	0.42
1:B:250:LEU:HD23	1:B:250:LEU:HA	1.81	0.41
1:B:369:GLY:HA2	1:B:386:LYS:HG3	2.03	0.41
1:A:351:VAL:HG22	1:A:439:LEU:HA	2.02	0.41
1:B:250:LEU:HD12	1:B:264:VAL:HG22	2.01	0.41
1:B:339:ILE:HG12	1:B:360[B]:VAL:HG13	2.04	0.40
1:A:279:GLY:HA3	1:A:280:ASN:HA	1.90	0.40
1:A:88:VAL:HG11	1:A:223:VAL:HB	2.03	0.40
1:B:277:ILE:HG12	1:B:297:VAL:HB	2.04	0.40

There are no symmetry-related clashes.

5.3 Torsion angles [i](#)

5.3.1 Protein backbone [i](#)

In the following table, the Percentiles column shows the percent Ramachandran outliers of the chain as a percentile score with respect to all X-ray entries followed by that with respect to entries of similar resolution.

The Analysed column shows the number of residues for which the backbone conformation was analysed, and the total number of residues.

Mol	Chain	Analysed	Favoured	Allowed	Outliers	Percentiles	
1	A	350/384 (91%)	340 (97%)	10 (3%)	0	100	100
1	B	354/384 (92%)	346 (98%)	8 (2%)	0	100	100
All	All	704/768 (92%)	686 (97%)	18 (3%)	0	100	100

There are no Ramachandran outliers to report.

5.3.2 Protein sidechains [i](#)

In the following table, the Percentiles column shows the percent sidechain outliers of the chain as a percentile score with respect to all X-ray entries followed by that with respect to entries of similar resolution.

The Analysed column shows the number of residues for which the sidechain conformation was analysed, and the total number of residues.

Mol	Chain	Analysed	Rotameric	Outliers	Percentiles	
1	A	272/298 (91%)	265 (97%)	7 (3%)	51	43
1	B	276/298 (93%)	272 (99%)	4 (1%)	71	69
All	All	548/596 (92%)	537 (98%)	11 (2%)	62	55

All (11) residues with a non-rotameric sidechain are listed below:

Mol	Chain	Res	Type
1	A	28	ARG
1	A	285[A]	GLU
1	A	285[B]	GLU
1	A	321	LEU
1	A	380	TYR

Continued on next page...

Continued from previous page...

Mol	Chain	Res	Type
1	A	383	ARG
1	A	411	LYS
1	B	3	GLU
1	B	380	TYR
1	B	421	ARG
1	B	475	HIS

Some sidechains can be flipped to improve hydrogen bonding and reduce clashes. All (4) such sidechains are listed below:

Mol	Chain	Res	Type
1	A	381	GLN
1	A	434	GLN
1	A	457	ASN
1	A	474	HIS

5.3.3 RNA [i](#)

There are no RNA molecules in this entry.

5.4 Non-standard residues in protein, DNA, RNA chains [i](#)

There are no non-standard protein/DNA/RNA residues in this entry.

5.5 Carbohydrates [i](#)

There are no carbohydrates in this entry.

5.6 Ligand geometry [i](#)

7 ligands are modelled in this entry.

In the following table, the Counts columns list the number of bonds (or angles) for which Mogul statistics could be retrieved, the number of bonds (or angles) that are observed in the model and the number of bonds (or angles) that are defined in the Chemical Component Dictionary. The Link column lists molecule types, if any, to which the group is linked. The Z score for a bond length (or angle) is the number of standard deviations the observed value is removed from the expected value. A bond length (or angle) with $|Z| > 2$ is considered an outlier worth inspection. RMSZ is the root-mean-square of all Z scores of the bond lengths (or angles).

Mol	Type	Chain	Res	Link	Bond lengths			Bond angles		
					Counts	RMSZ	# Z > 2	Counts	RMSZ	# Z > 2
2	IMP	A	500	-	21,25,25	1.14	3 (14%)	22,38,38	2.30	3 (13%)
3	2EY	A	501	-	26,29,29	2.02	6 (23%)	30,41,41	2.52	11 (36%)
4	GOL	A	502	-	5,5,5	0.39	0	5,5,5	0.19	0
4	GOL	A	503	-	5,5,5	0.35	0	5,5,5	0.30	0
2	IMP	B	500	-	21,25,25	1.17	3 (14%)	22,38,38	2.36	4 (18%)
3	2EY	B	501	-	26,29,29	1.96	6 (23%)	30,41,41	2.65	13 (43%)
4	GOL	B	502	-	5,5,5	0.36	0	5,5,5	0.17	0

In the following table, the Chirals column lists the number of chiral outliers, the number of chiral centers analysed, the number of these observed in the model and the number defined in the Chemical Component Dictionary. Similar counts are reported in the Torsion and Rings columns. '-' means no outliers of that kind were identified.

Mol	Type	Chain	Res	Link	Chirals	Torsions	Rings
2	IMP	A	500	-	-	0/6/26/26	0/3/3/3
3	2EY	A	501	-	-	0/10/12/12	0/4/4/4
4	GOL	A	502	-	-	0/4/4/4	0/0/0/0
4	GOL	A	503	-	-	0/4/4/4	0/0/0/0
2	IMP	B	500	-	-	0/6/26/26	0/3/3/3
3	2EY	B	501	-	-	0/10/12/12	0/4/4/4
4	GOL	B	502	-	-	0/4/4/4	0/0/0/0

All (18) bond length outliers are listed below:

Mol	Chain	Res	Type	Atoms	Z	Observed(Å)	Ideal(Å)
3	A	501	2EY	C16-N3	-4.99	1.34	1.44
3	B	501	2EY	C16-N3	-4.50	1.35	1.44
3	B	501	2EY	C14-C11	-2.45	1.48	1.52
3	A	501	2EY	C14-C11	-2.30	1.48	1.52
3	A	501	2EY	C6-C5	-2.07	1.39	1.42
3	B	501	2EY	C6-C5	-2.00	1.39	1.42
2	B	500	IMP	C2-N1	2.31	1.38	1.33
2	A	500	IMP	C6-N1	2.42	1.37	1.33
2	A	500	IMP	C2-N1	2.51	1.38	1.33
2	B	500	IMP	C6-N1	2.77	1.38	1.33
3	B	501	2EY	C15-C14	2.92	1.40	1.36
3	A	501	2EY	C15-C14	3.15	1.41	1.36
2	A	500	IMP	C2-N3	3.35	1.37	1.32
2	B	500	IMP	C2-N3	3.42	1.37	1.32
3	B	501	2EY	N1-N2	4.19	1.40	1.34
3	A	501	2EY	N1-N2	4.28	1.40	1.34

Continued on next page...

Continued from previous page...

Mol	Chain	Res	Type	Atoms	Z	Observed(Å)	Ideal(Å)
3	A	501	2EY	O2-C3	4.75	1.36	1.24
3	B	501	2EY	O2-C3	4.76	1.36	1.24

All (31) bond angle outliers are listed below:

Mol	Chain	Res	Type	Atoms	Z	Observed(°)	Ideal(°)
2	A	500	IMP	N3-C2-N1	-9.40	120.67	128.86
2	B	500	IMP	N3-C2-N1	-9.27	120.78	128.86
3	B	501	2EY	C15-C14-C11	-7.44	117.30	129.21
3	A	501	2EY	C15-C14-C11	-6.70	118.49	129.21
3	B	501	2EY	C17-C16-C21	-4.06	115.06	121.28
3	A	501	2EY	C17-C16-C21	-3.65	115.69	121.28
3	A	501	2EY	C6-C5-N4	-3.60	119.98	123.38
3	B	501	2EY	C14-C15-N3	-3.42	101.42	106.42
3	A	501	2EY	C14-C15-N3	-3.31	101.59	106.42
3	B	501	2EY	C6-C5-N4	-3.05	120.50	123.38
2	B	500	IMP	C1'-N9-C4	-2.74	121.90	126.64
3	A	501	2EY	C2-C3-N4	-2.54	121.05	124.06
3	B	501	2EY	C2-C3-N4	-2.46	121.16	124.06
2	B	500	IMP	C4-C5-N7	-2.43	107.06	109.41
2	A	500	IMP	C4-C5-N7	-2.15	107.34	109.41
3	B	501	2EY	C20-C19-CL1	2.16	122.75	119.35
3	B	501	2EY	C15-C14-N1	2.22	113.27	110.11
3	A	501	2EY	O1-C1-C6	2.25	117.56	114.31
3	B	501	2EY	C3-N4-C5	2.27	120.76	117.84
2	A	500	IMP	C2-N1-C6	2.80	120.58	115.91
3	A	501	2EY	C20-C21-C16	2.82	122.16	119.12
3	B	501	2EY	O1-C1-C6	2.92	118.52	114.31
3	B	501	2EY	C20-C21-C16	2.95	122.31	119.12
2	B	500	IMP	C2-N1-C6	2.97	120.87	115.91
3	A	501	2EY	C3-N4-C5	2.98	121.67	117.84
3	B	501	2EY	C1-O1-C11	3.71	123.47	117.81
3	A	501	2EY	C1-O1-C11	4.01	123.92	117.81
3	A	501	2EY	C18-C17-C16	4.34	123.81	119.12
3	B	501	2EY	C18-C17-C16	4.70	124.19	119.12
3	A	501	2EY	C11-C14-N1	5.09	128.63	120.27
3	B	501	2EY	C11-C14-N1	5.57	129.43	120.27

There are no chirality outliers.

There are no torsion outliers.

There are no ring outliers.

2 monomers are involved in 2 short contacts:

Mol	Chain	Res	Type	Clashes	Symm-Clashes
2	A	500	IMP	1	0
2	B	500	IMP	1	0

5.7 Other polymers [i](#)

There are no such residues in this entry.

5.8 Polymer linkage issues [i](#)

There are no chain breaks in this entry.

6 Fit of model and data

6.1 Protein, DNA and RNA chains

In the following table, the column labelled ‘#RSRZ> 2’ contains the number (and percentage) of RSRZ outliers, followed by percent RSRZ outliers for the chain as percentile scores relative to all X-ray entries and entries of similar resolution. The OWAB column contains the minimum, median, 95th percentile and maximum values of the occupancy-weighted average B-factor per residue. The column labelled ‘Q< 0.9’ lists the number of (and percentage) of residues with an average occupancy less than 0.9.

Mol	Chain	Analysed	<RSRZ>	#RSRZ>2		OWAB(Å ²)	Q<0.9
1	A	349/384 (90%)	-0.07	21 (6%)	23 26	8, 17, 51, 95	0
1	B	348/384 (90%)	0.08	26 (7%)	15 17	7, 18, 58, 96	0
All	All	697/768 (90%)	0.00	47 (6%)	19 21	7, 17, 57, 96	0

All (47) RSRZ outliers are listed below:

Mol	Chain	Res	Type	RSRZ
1	A	380	TYR	9.3
1	B	380	TYR	9.2
1	B	481	GLU	6.1
1	A	381	GLN	6.0
1	B	382	GLY	5.9
1	B	381	GLN	5.8
1	B	483	PRO	5.7
1	B	383	ARG	5.6
1	B	482	ALA	5.5
1	B	480	LYS	5.5
1	B	479	THR	5.1
1	B	476	VAL	4.8
1	B	485	TYR	4.8
1	B	475	HIS	4.5
1	B	385	PHE	4.5
1	A	382	GLY	4.4
1	B	378	GLU	4.3
1	A	482	ALA	4.0
1	A	485	TYR	3.7
1	B	477	GLN	3.7
1	A	479	THR	3.6
1	A	383	ARG	3.6
1	A	385	PHE	3.6
1	A	379	ILE	3.5

Continued on next page...

Continued from previous page...

Mol	Chain	Res	Type	RSRZ
1	B	399	LYS	3.5
1	A	477	GLN	3.4
1	B	478	ILE	3.2
1	A	481	GLU	3.2
1	A	476	VAL	3.1
1	B	379	ILE	3.1
1	A	478	ILE	2.9
1	B	421	ARG	2.9
1	A	378	GLU	2.9
1	A	421	ARG	2.7
1	A	480	LYS	2.7
1	A	376	GLU	2.7
1	A	475	HIS	2.7
1	B	473	PRO	2.6
1	A	-1	ASN	2.5
1	B	471	SER	2.5
1	B	484	ASN	2.3
1	B	24[A]	ASP	2.2
1	B	-1	ASN	2.1
1	A	231	ALA	2.1
1	B	474	HIS	2.1
1	B	229	VAL	2.0
1	A	377	THR	2.0

6.2 Non-standard residues in protein, DNA, RNA chains [i](#)

There are no non-standard protein/DNA/RNA residues in this entry.

6.3 Carbohydrates [i](#)

There are no carbohydrates in this entry.

6.4 Ligands [i](#)

In the following table, the Atoms column lists the number of modelled atoms in the group and the number defined in the chemical component dictionary. LLDF column lists the quality of electron density of the group with respect to its neighbouring residues in protein, DNA or RNA chains. The B-factors column lists the minimum, median, 95th percentile and maximum values of B factors of atoms in the group. The column labelled 'Q< 0.9' lists the number of atoms with occupancy less than 0.9.

Mol	Type	Chain	Res	Atoms	RSCC	RSR	LLDF	B-factors(\AA^2)	Q<0.9
4	GOL	A	502	6/6	0.94	0.18	5.86	23,38,44,48	0
4	GOL	A	503	6/6	0.85	0.14	2.26	50,57,60,65	0
3	2EY	B	501	26/26	0.93	0.14	1.99	20,26,37,43	0
4	GOL	B	502	6/6	0.93	0.16	1.74	22,34,37,40	0
3	2EY	A	501	26/26	0.95	0.09	0.57	17,22,29,38	0
2	IMP	B	500	23/23	0.98	0.07	-0.44	8,13,17,18	0
2	IMP	A	500	23/23	0.99	0.07	-0.48	8,12,17,17	0

6.5 Other polymers [i](#)

There are no such residues in this entry.