



Full wwPDB X-ray Structure Validation Report ⓘ

Feb 14, 2017 – 06:03 pm GMT

PDB ID : 4MZ4
Title : Discovery of an Irreversible HCV NS5B Polymerase Inhibitor
Authors : Zeng, Q.; Anilkumar, G.N.; Rosenblum, S.B.; Huang, H.-C.; Lesburg, C.A.; Jiang, Y.; Selyutin, O.; Chan, T.-Y.; Bennett, F.; Chen, K.X.; Venkatraman, S.; Sannigrahi, M.; Velazquez, F.; Duca, J.S.; Gavalas, S.; Huang, Y.; Pu, H.; Wang, L.; Pinto, P.; Vibulbhan, B.; Agrawal, S.; Ferrari, E.; Jiang, C.-K.; Li, C.; Hesk, D.; Gesell, J.; Sorota, S.; Shih, N.-Y.; Njoroge, F.G.; Kozlowski, J.A.
Deposited on : 2013-09-29
Resolution : 1.63 Å(reported)

This is a Full wwPDB X-ray Structure Validation Report for a publicly released PDB entry.

We welcome your comments at validation@mail.wwpdb.org

A user guide is available at

<http://wwpdb.org/validation/2016/XrayValidationReportHelp>

with specific help available everywhere you see the ⓘ symbol.

The following versions of software and data (see [references ⓘ](#)) were used in the production of this report:

MolProbity : 4.02b-467
Mogul : 1.7.2 (RC1), CSD as538be (2017)
Xtriage (Phenix) : 1.9-1692
EDS : trunk28620
Percentile statistics : 20161228.v01 (using entries in the PDB archive December 28th 2016)
Refmac : 5.8.0135
CCP4 : 6.5.0
Ideal geometry (proteins) : Engh & Huber (2001)
Ideal geometry (DNA, RNA) : Parkinson et al. (1996)
Validation Pipeline (wwPDB-VP) : recalc28949

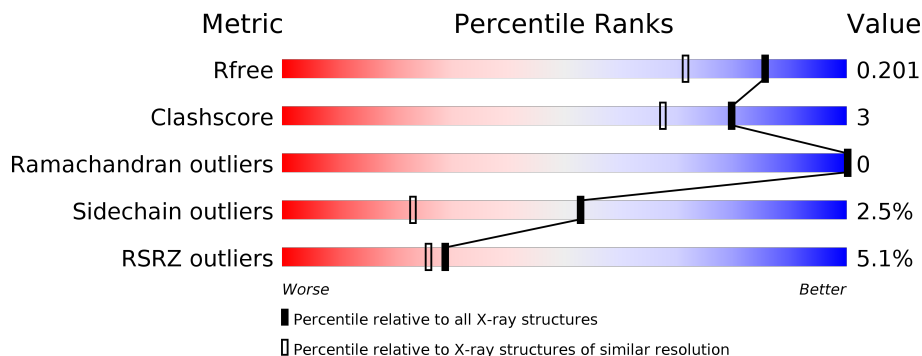
1 Overall quality at a glance

The following experimental techniques were used to determine the structure:

X-RAY DIFFRACTION

The reported resolution of this entry is 1.63 Å.

Percentile scores (ranging between 0-100) for global validation metrics of the entry are shown in the following graphic. The table shows the number of entries on which the scores are based.



Metric	Whole archive (#Entries)	Similar resolution (#Entries, resolution range(Å))
R_{free}	100719	2211 (1.66-1.62)
Clashscore	112137	2356 (1.66-1.62)
Ramachandran outliers	110173	2315 (1.66-1.62)
Sidechain outliers	110143	2315 (1.66-1.62)
RSRZ outliers	101464	2219 (1.66-1.62)

The table below summarises the geometric issues observed across the polymeric chains and their fit to the electron density. The red, orange, yellow and green segments on the lower bar indicate the fraction of residues that contain outliers for ≥ 3 , 2, 1 and 0 types of geometric quality criteria. A grey segment represents the fraction of residues that are not modelled. The numeric value for each fraction is indicated below the corresponding segment, with a dot representing fractions $\leq 5\%$. The upper red bar (where present) indicates the fraction of residues that have poor fit to the electron density. The numeric value is given above the bar.

Mol	Chain	Length	Quality of chain
1	A	576	<div> <div>3%</div> <div>93%</div> <div>5% ..</div> </div>
1	B	576	<div> <div>7%</div> <div>88%</div> <div>8% ..</div> </div>

The following table lists non-polymeric compounds, carbohydrate monomers and non-standard residues in protein, DNA, RNA chains that are outliers for geometric or electron-density-fit criteria:

Mol	Type	Chain	Res	Chirality	Geometry	Clashes	Electron density
2	2F3	A	601	-	-	X	-
3	PO4	A	603	-	-	-	X
3	PO4	A	604	-	-	-	X

2 Entry composition

There are 4 unique types of molecules in this entry. The entry contains 10615 atoms, of which 0 are hydrogens and 0 are deuteriums.

In the tables below, the ZeroOcc column contains the number of atoms modelled with zero occupancy, the AltConf column contains the number of residues with at least one atom in alternate conformation and the Trace column contains the number of residues modelled with at most 2 atoms.

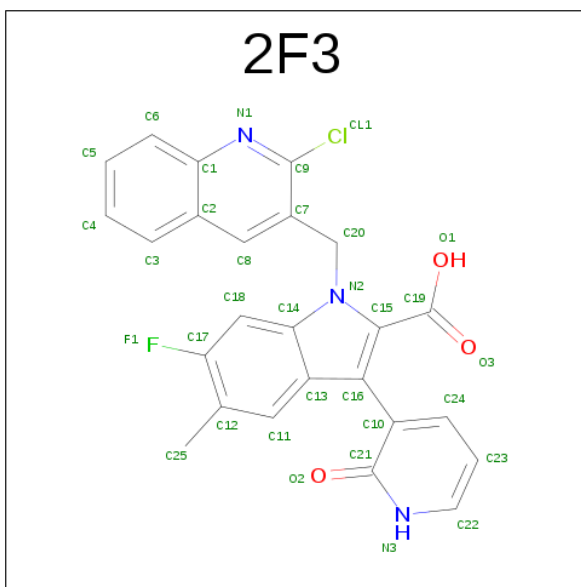
- Molecule 1 is a protein called RNA-directed RNA polymerase.

Mol	Chain	Residues	Atoms					ZeroOcc	AltConf	Trace
1	A	563	Total	C	N	O	S	0	12	0
			4468	2808	792	832	36			
1	B	560	Total	C	N	O	S	0	8	0
			4412	2777	779	821	35			

There are 16 discrepancies between the modelled and reference sequences:

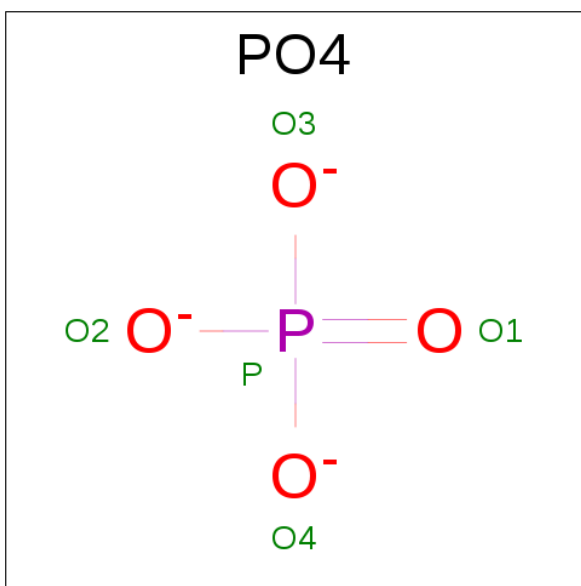
Chain	Residue	Modelled	Actual	Comment	Reference
A	440	GLY	GLU	CONFLICT	UNP O92972
A	520	ILE	THR	CONFLICT	UNP O92972
A	571	GLU	-	EXPRESSION TAG	UNP O92972
A	572	ASN	-	EXPRESSION TAG	UNP O92972
A	573	LEU	-	EXPRESSION TAG	UNP O92972
A	574	TYR	-	EXPRESSION TAG	UNP O92972
A	575	PHE	-	EXPRESSION TAG	UNP O92972
A	576	GLN	-	EXPRESSION TAG	UNP O92972
B	440	GLY	GLU	CONFLICT	UNP O92972
B	520	ILE	THR	CONFLICT	UNP O92972
B	571	GLU	-	EXPRESSION TAG	UNP O92972
B	572	ASN	-	EXPRESSION TAG	UNP O92972
B	573	LEU	-	EXPRESSION TAG	UNP O92972
B	574	TYR	-	EXPRESSION TAG	UNP O92972
B	575	PHE	-	EXPRESSION TAG	UNP O92972
B	576	GLN	-	EXPRESSION TAG	UNP O92972

- Molecule 2 is 1-[(2-CHLOROQUINOLIN-3-YL)METHYL]-6-FLUORO-5-METHYL-3-(2-OXO-1,2-DIHYDROPYRIDIN-3-YL)-1H-INDOLE-2-CARBOXYLIC ACID (three-letter code: 2F3) (formula: C₂₅H₁₇ClFN₃O₃).



Mol	Chain	Residues	Atoms					ZeroOcc	AltConf
2	A	1	Total	C	F	N	O	0	0
			32	25	1	3	3		
2	B	1	Total	C	F	N	O	0	0
			32	25	1	3	3		

- Molecule 3 is PHOSPHATE ION (three-letter code: PO4) (formula: O₄P).



Mol	Chain	Residues	Atoms			ZeroOcc	AltConf
3	A	1	Total	O	P	0	0
			5	4	1		
3	A	1	Total	O	P	0	0
			5	4	1		

Continued on next page...

Continued from previous page...

Mol	Chain	Residues	Atoms			ZeroOcc	AltConf
3	A	1	Total	O	P	0	0
			5	4	1		

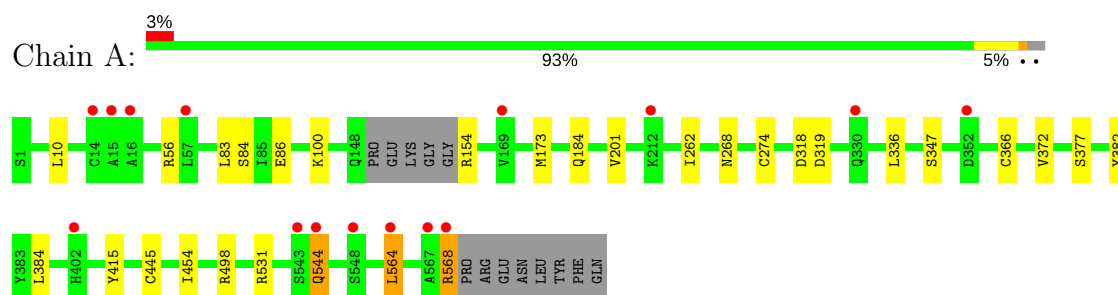
- Molecule 4 is water.

Mol	Chain	Residues	Atoms		ZeroOcc	AltConf
4	A	902	Total	O	0	0
			902	902		
4	B	754	Total	O	0	0
			754	754		

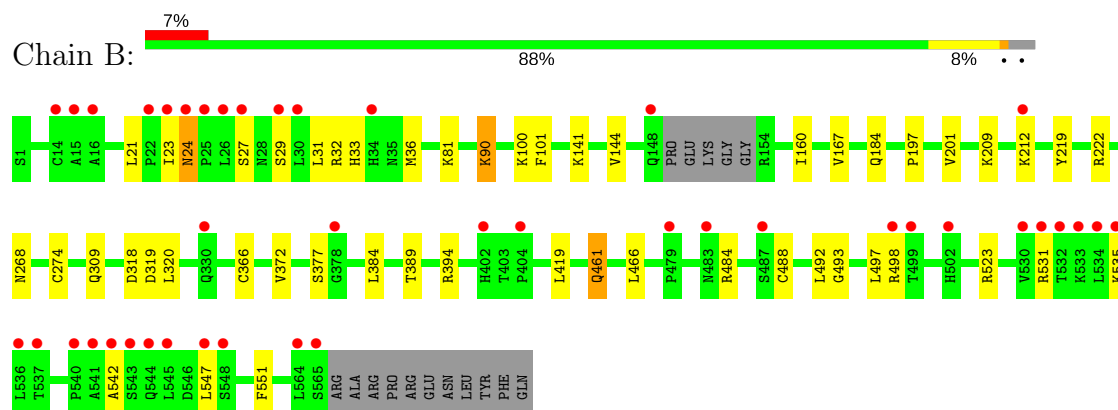
3 Residue-property plots

These plots are drawn for all protein, RNA and DNA chains in the entry. The first graphic for a chain summarises the proportions of the various outlier classes displayed in the second graphic. The second graphic shows the sequence view annotated by issues in geometry and electron density. Residues are color-coded according to the number of geometric quality criteria for which they contain at least one outlier: green = 0, yellow = 1, orange = 2 and red = 3 or more. A red dot above a residue indicates a poor fit to the electron density ($RSRZ > 2$). Stretches of 2 or more consecutive residues without any outlier are shown as a green connector. Residues present in the sample, but not in the model, are shown in grey.

• Molecule 1: RNA-directed RNA polymerase



• Molecule 1: RNA-directed RNA polymerase



4 Data and refinement statistics

Property	Value	Source
Space group	P 21 21 21	Depositor
Cell constants a, b, c, α , β , γ	89.99Å 106.60Å 134.60Å 90.00° 90.00° 90.00°	Depositor
Resolution (Å)	19.92 – 1.63 19.82 – 1.63	Depositor EDS
% Data completeness (in resolution range)	99.0 (19.92-1.63) 99.3 (19.82-1.63)	Depositor EDS
R_{merge}	(Not available)	Depositor
R_{sym}	(Not available)	Depositor
$\langle I/\sigma(I) \rangle$ ¹	3.91 (at 1.63Å)	Xtriage
Refinement program	BUSTER 2.11.2	Depositor
R, R_{free}	0.175 , 0.204 0.171 , 0.201	Depositor DCC
R_{free} test set	8018 reflections (5.29%)	DCC
Wilson B-factor (Å ²)	19.0	Xtriage
Anisotropy	0.404	Xtriage
Bulk solvent k_{sol} (e/Å ³), B_{sol} (Å ²)	0.36 , 58.1	EDS
L-test for twinning ²	$\langle L \rangle = 0.51$, $\langle L^2 \rangle = 0.35$	Xtriage
Estimated twinning fraction	No twinning to report.	Xtriage
F_o, F_c correlation	0.97	EDS
Total number of atoms	10615	wwPDB-VP
Average B, all atoms (Å ²)	27.0	wwPDB-VP

Xtriage's analysis on translational NCS is as follows: *The largest off-origin peak in the Patterson function is 3.04% of the height of the origin peak. No significant pseudotranslation is detected.*

¹Intensities estimated from amplitudes.

²Theoretical values of $\langle |L| \rangle$, $\langle L^2 \rangle$ for acentric reflections are 0.5, 0.333 respectively for untwinned datasets, and 0.375, 0.2 for perfectly twinned datasets.

5 Model quality [i](#)

5.1 Standard geometry [i](#)

Bond lengths and bond angles in the following residue types are not validated in this section: 2F3, PO4

The Z score for a bond length (or angle) is the number of standard deviations the observed value is removed from the expected value. A bond length (or angle) with $|Z| > 5$ is considered an outlier worth inspection. RMSZ is the root-mean-square of all Z scores of the bond lengths (or angles).

Mol	Chain	Bond lengths		Bond angles	
		RMSZ	# Z >5	RMSZ	# Z >5
1	A	0.53	0/4562	0.62	0/6189
1	B	0.50	0/4506	0.64	0/6114
All	All	0.52	0/9068	0.63	0/12303

There are no bond length outliers.

There are no bond angle outliers.

There are no chirality outliers.

There are no planarity outliers.

5.2 Too-close contacts [i](#)

In the following table, the Non-H and H(model) columns list the number of non-hydrogen atoms and hydrogen atoms in the chain respectively. The H(added) column lists the number of hydrogen atoms added and optimized by MolProbity. The Clashes column lists the number of clashes within the asymmetric unit, whereas Symm-Clashes lists symmetry related clashes.

Mol	Chain	Non-H	H(model)	H(added)	Clashes	Symm-Clashes
1	A	4468	0	4474	24	0
1	B	4412	0	4421	32	0
2	A	32	0	16	9	0
2	B	32	0	16	5	0
3	A	15	0	0	0	0
4	A	902	0	0	6	0
4	B	754	0	0	8	0
All	All	10615	0	8927	56	0

The all-atom clashscore is defined as the number of clashes found per 1000 atoms (including hydrogen atoms). The all-atom clashscore for this structure is 3.

All (56) close contacts within the same asymmetric unit are listed below, sorted by their clash magnitude.

Atom-1	Atom-2	Interatomic distance (Å)	Clash overlap (Å)
1:A:366[A]:CYS:SG	2:A:601:2F3:C18	2.50	0.98
1:B:24:ASN:HD21	1:B:27:SER:HB3	1.35	0.92
1:A:366[A]:CYS:SG	2:A:601:2F3:H12	2.13	0.88
1:A:366[B]:CYS:HG	2:A:601:2F3:C9	1.77	0.76
1:B:201[A]:VAL:HG12	1:B:384:LEU:HG	1.69	0.74
1:B:201[A]:VAL:CG1	1:B:384:LEU:HG	2.19	0.73
1:B:201[B]:VAL:HG22	1:B:384:LEU:HG	1.71	0.71
1:B:366[A]:CYS:SG	2:B:601:2F3:C18	2.80	0.69
1:A:366[A]:CYS:SG	2:A:601:2F3:C14	2.84	0.65
1:A:201[B]:VAL:HG22	1:A:384:LEU:HG	1.80	0.62
1:B:523:ARG:NH2	1:B:535:LYS:HB3	2.16	0.61
1:B:523:ARG:HH21	1:B:535:LYS:HB3	1.67	0.59
1:B:461:GLN:HB3	1:B:542:ALA:HA	1.84	0.58
1:B:366[A]:CYS:SG	2:B:601:2F3:H12	2.43	0.57
1:A:262:ILE:HD11	4:A:1249:HOH:O	2.04	0.56
1:A:268:ASN:HB3	1:A:274[B]:CYS:SG	2.44	0.56
1:A:498:ARG:NH1	4:A:1027:HOH:O	2.38	0.55
1:B:498:ARG:NH1	4:B:1007:HOH:O	2.40	0.54
1:B:141:LYS:HD2	1:B:160:ILE:HD11	1.90	0.54
1:A:347[B]:SER:OG	1:A:347[B]:SER:O	2.24	0.54
1:A:531:ARG:HD2	4:A:1139:HOH:O	2.09	0.53
1:B:389:THR:HG23	1:B:492:LEU:HD21	1.89	0.53
1:B:488:CYS:HB2	4:B:1248:HOH:O	2.08	0.53
1:A:366[B]:CYS:SG	2:A:601:2F3:N1	2.66	0.52
1:A:366[B]:CYS:SG	2:A:601:2F3:C7	2.88	0.52
1:B:319:ASP:HB2	2:B:601:2F3:H11	1.91	0.52
1:B:309:GLN:HG2	4:B:1211:HOH:O	2.10	0.51
1:B:219:TYR:HB3	1:B:320:LEU:HD23	1.93	0.51
1:A:201[B]:VAL:CG2	1:A:384:LEU:HG	2.42	0.50
1:A:445:CYS:SG	1:A:454:ILE:HD12	2.52	0.49
1:A:544:GLN:HG3	4:A:1404:HOH:O	2.12	0.49
1:A:318:ASP:OD1	2:A:601:2F3:H10	2.13	0.48
1:B:100:LYS:HG3	1:B:101:PHE:CD1	2.48	0.48
1:A:568:ARG:HG3	4:A:1178:HOH:O	2.14	0.48
1:B:100:LYS:NZ	4:B:1187:HOH:O	2.46	0.48
1:A:319:ASP:HB2	2:A:601:2F3:C6	2.43	0.48
1:A:84:SER:OG	1:A:86:GLU:HG2	2.14	0.48
1:B:24:ASN:ND2	1:B:27:SER:HB3	2.17	0.48
1:B:466:LEU:HD22	1:B:551:PHE:HE2	1.78	0.48
1:B:318:ASP:OD1	2:B:601:2F3:H10	2.15	0.46

Continued on next page...

Continued from previous page...

Atom-1	Atom-2	Interatomic distance (Å)	Clash overlap (Å)
1:B:144:VAL:HB	1:B:394:ARG:HG2	1.98	0.46
1:B:531:ARG:NH2	4:B:912:HOH:O	2.49	0.45
1:B:268:ASN:HB3	1:B:274:CYS:SG	2.57	0.45
1:B:419:LEU:HD21	1:B:497:LEU:CD1	2.47	0.45
1:A:154:ARG:N	4:A:1470:HOH:O	2.50	0.44
1:A:415:TYR:CE1	2:A:601:2F3:H18	2.53	0.43
1:A:83:LEU:HB2	1:A:173:MET:HA	2.00	0.43
1:B:222:ARG:HG2	4:B:1199:HOH:O	2.17	0.43
1:A:564:LEU:HA	1:A:564:LEU:HD22	1.87	0.43
1:B:167:VAL:HG23	4:B:1381:HOH:O	2.19	0.42
1:B:90:LYS:HE3	4:B:1364:HOH:O	2.20	0.42
1:B:197:PRO:O	1:B:201[B]:VAL:HG23	2.19	0.42
1:B:366[A]:CYS:SG	2:B:601:2F3:C14	3.07	0.42
1:A:372:VAL:HG22	1:A:382:TYR:CD1	2.56	0.40
1:B:33:HIS:HB3	1:B:36:MET:HG3	2.04	0.40
1:B:32:ARG:HD3	1:B:493:GLY:O	2.21	0.40

There are no symmetry-related clashes.

5.3 Torsion angles ⓘ

5.3.1 Protein backbone ⓘ

In the following table, the Percentiles column shows the percent Ramachandran outliers of the chain as a percentile score with respect to all X-ray entries followed by that with respect to entries of similar resolution.

The Analysed column shows the number of residues for which the backbone conformation was analysed, and the total number of residues.

Mol	Chain	Analysed	Favoured	Allowed	Outliers	Percentiles	
1	A	571/576 (99%)	563 (99%)	8 (1%)	0	100	100
1	B	564/576 (98%)	551 (98%)	13 (2%)	0	100	100
All	All	1135/1152 (98%)	1114 (98%)	21 (2%)	0	100	100

There are no Ramachandran outliers to report.

5.3.2 Protein sidechains ⓘ

In the following table, the Percentiles column shows the percent sidechain outliers of the chain as a percentile score with respect to all X-ray entries followed by that with respect to entries of similar resolution.

The Analysed column shows the number of residues for which the sidechain conformation was analysed, and the total number of residues.

Mol	Chain	Analysed	Rotameric	Outliers	Percentiles	
1	A	491/490 (100%)	482 (98%)	9 (2%)	64	38
1	B	485/490 (99%)	470 (97%)	15 (3%)	45	14
All	All	976/980 (100%)	952 (98%)	24 (2%)	53	23

All (24) residues with a non-rotameric sidechain are listed below:

Mol	Chain	Res	Type
1	A	10	LEU
1	A	56	ARG
1	A	100	LYS
1	A	184	GLN
1	A	336	LEU
1	A	377	SER
1	A	544	GLN
1	A	564	LEU
1	A	568	ARG
1	B	21	LEU
1	B	23	ILE
1	B	24	ASN
1	B	29	SER
1	B	31	LEU
1	B	81	LYS
1	B	90	LYS
1	B	184	GLN
1	B	209	LYS
1	B	212	LYS
1	B	372	VAL
1	B	377	SER
1	B	461	GLN
1	B	484	ARG
1	B	547	LEU

Some sidechains can be flipped to improve hydrogen bonding and reduce clashes. There are no such sidechains identified.

5.3.3 RNA ⓘ

There are no RNA molecules in this entry.

5.4 Non-standard residues in protein, DNA, RNA chains ⓘ

There are no non-standard protein/DNA/RNA residues in this entry.

5.5 Carbohydrates ⓘ

There are no carbohydrates in this entry.

5.6 Ligand geometry ⓘ

5 ligands are modelled in this entry.

In the following table, the Counts columns list the number of bonds (or angles) for which Mogul statistics could be retrieved, the number of bonds (or angles) that are observed in the model and the number of bonds (or angles) that are defined in the chemical component dictionary. The Link column lists molecule types, if any, to which the group is linked. The Z score for a bond length (or angle) is the number of standard deviations the observed value is removed from the expected value. A bond length (or angle) with $|Z| > 2$ is considered an outlier worth inspection. RMSZ is the root-mean-square of all Z scores of the bond lengths (or angles).

Mol	Type	Chain	Res	Link	Bond lengths			Bond angles		
					Counts	RMSZ	$\# Z > 2$	Counts	RMSZ	$\# Z > 2$
2	2F3	A	601	1	28,36,37	1.77	6 (21%)	35,53,55	1.55	5 (14%)
3	PO4	A	602	-	4,4,4	2.44	2 (50%)	6,6,6	0.51	0
3	PO4	A	603	-	4,4,4	1.13	0	6,6,6	0.27	0
3	PO4	A	604	-	4,4,4	1.15	1 (25%)	6,6,6	0.38	0
2	2F3	B	601	1	28,36,37	1.80	8 (28%)	35,53,55	1.55	7 (20%)

In the following table, the Chirals column lists the number of chiral outliers, the number of chiral centers analysed, the number of these observed in the model and the number defined in the chemical component dictionary. Similar counts are reported in the Torsion and Rings columns. '-' means no outliers of that kind were identified.

Mol	Type	Chain	Res	Link	Chirals	Torsions	Rings
2	2F3	A	601	1	-	0/8/12/12	0/5/5/5
3	PO4	A	602	-	-	0/0/0/0	0/0/0/0
3	PO4	A	603	-	-	0/0/0/0	0/0/0/0
3	PO4	A	604	-	-	0/0/0/0	0/0/0/0

Continued on next page...

Continued from previous page...

Mol	Type	Chain	Res	Link	Chirals	Torsions	Rings
2	2F3	B	601	1	-	0/8/12/12	0/5/5/5

All (17) bond length outliers are listed below:

Mol	Chain	Res	Type	Atoms	Z	Observed(Å)	Ideal(Å)
2	B	601	2F3	C10-C16	-3.43	1.43	1.49
2	A	601	2F3	C10-C16	-3.21	1.44	1.49
2	B	601	2F3	C16-C13	-2.13	1.41	1.47
3	A	604	PO4	P-O1	2.27	1.55	1.50
2	B	601	2F3	C12-C17	2.30	1.40	1.37
3	A	602	PO4	P-O4	2.48	1.63	1.54
2	A	601	2F3	C9-N1	2.49	1.35	1.31
2	A	601	2F3	C18-C17	2.60	1.39	1.35
2	B	601	2F3	C18-C17	2.94	1.40	1.35
2	B	601	2F3	C9-N1	3.00	1.36	1.31
2	B	601	2F3	C23-C24	3.02	1.44	1.38
2	A	601	2F3	C21-N3	3.16	1.38	1.33
2	B	601	2F3	C21-N3	3.33	1.39	1.33
2	B	601	2F3	C21-C10	3.56	1.52	1.44
2	A	601	2F3	C21-C10	3.70	1.52	1.44
2	A	601	2F3	C23-C24	3.90	1.46	1.38
3	A	602	PO4	P-O1	4.02	1.59	1.50

All (12) bond angle outliers are listed below:

Mol	Chain	Res	Type	Atoms	Z	Observed(°)	Ideal(°)
2	B	601	2F3	C17-C18-C14	-2.24	116.97	119.22
2	A	601	2F3	C16-C15-N2	-2.19	106.08	108.24
2	B	601	2F3	C23-C22-N3	-2.13	119.89	123.43
2	B	601	2F3	C24-C10-C16	2.31	124.12	119.13
2	B	601	2F3	C7-C20-N2	2.45	116.52	112.62
2	A	601	2F3	C20-C7-C9	2.80	124.63	120.20
2	A	601	2F3	C7-C20-N2	2.85	117.15	112.62
2	B	601	2F3	C20-C7-C9	2.86	124.72	120.20
2	B	601	2F3	C22-N3-C21	3.14	123.72	116.60
2	A	601	2F3	C22-N3-C21	3.14	123.74	116.60
2	B	601	2F3	C11-C12-C17	4.22	118.94	116.00
2	A	601	2F3	C11-C12-C17	4.47	119.11	116.00

There are no chirality outliers.

There are no torsion outliers.

There are no ring outliers.

2 monomers are involved in 14 short contacts:

Mol	Chain	Res	Type	Clashes	Symm-Clashes
2	A	601	2F3	9	0
2	B	601	2F3	5	0

5.7 Other polymers [i](#)

There are no such residues in this entry.

5.8 Polymer linkage issues [i](#)

There are no chain breaks in this entry.

6 Fit of model and data

6.1 Protein, DNA and RNA chains

In the following table, the column labelled ‘#RSRZ> 2’ contains the number (and percentage) of RSRZ outliers, followed by percent RSRZ outliers for the chain as percentile scores relative to all X-ray entries and entries of similar resolution. The OWAB column contains the minimum, median, 95th percentile and maximum values of the occupancy-weighted average B-factor per residue. The column labelled ‘Q< 0.9’ lists the number of (and percentage) of residues with an average occupancy less than 0.9.

Mol	Chain	Analysed	<RSRZ>	#RSRZ>2	OWAB(Å ²)	Q<0.9
1	A	563/576 (97%)	-0.16	15 (2%) 55 55	13, 19, 39, 83	0
1	B	560/576 (97%)	0.21	42 (7%) 15 12	13, 24, 57, 95	0
All	All	1123/1152 (97%)	0.03	57 (5%) 29 26	13, 21, 48, 95	0

All (57) RSRZ outliers are listed below:

Mol	Chain	Res	Type	RSRZ
1	B	26	LEU	15.6
1	B	545	LEU	11.2
1	B	23	ILE	10.3
1	B	25	PRO	9.7
1	B	565	SER	8.0
1	A	568	ARG	7.3
1	B	531	ARG	7.1
1	A	567	ALA	6.4
1	B	544	GLN	6.2
1	B	548	SER	6.1
1	B	535	LYS	5.6
1	B	24	ASN	5.3
1	B	542	ALA	5.1
1	B	14	CYS	5.0
1	B	532	THR	5.0
1	B	541	ALA	5.0
1	B	29	SER	5.0
1	B	543	SER	5.0
1	A	564	LEU	4.6
1	B	502	HIS	4.6
1	B	536	LEU	4.4
1	B	30	LEU	4.2
1	B	540	PRO	4.2
1	B	564	LEU	4.2

Continued on next page...

Continued from previous page...

Mol	Chain	Res	Type	RSRZ
1	A	548	SER	4.2
1	B	16	ALA	4.1
1	B	530	VAL	4.0
1	B	27	SER	4.0
1	B	499	THR	3.7
1	B	534	LEU	3.7
1	B	402	HIS	3.7
1	A	212	LYS	3.6
1	B	404	PRO	3.3
1	B	498	ARG	3.3
1	B	22	PRO	3.2
1	B	547	LEU	3.2
1	A	15	ALA	3.2
1	A	57	LEU	3.1
1	B	479	PRO	3.1
1	A	402	HIS	3.1
1	A	544	GLN	3.0
1	A	352	ASP	3.0
1	A	14	CYS	2.8
1	B	483	ASN	2.8
1	B	148	GLN	2.8
1	B	533	LYS	2.7
1	A	543	SER	2.7
1	B	378	GLY	2.6
1	B	34	HIS	2.6
1	B	212	LYS	2.6
1	B	537	THR	2.5
1	B	15	ALA	2.5
1	B	330	GLN	2.3
1	B	487	SER	2.1
1	A	16	ALA	2.1
1	A	169	VAL	2.1
1	A	330	GLN	2.0

6.2 Non-standard residues in protein, DNA, RNA chains [i](#)

There are no non-standard protein/DNA/RNA residues in this entry.

6.3 Carbohydrates [i](#)

There are no carbohydrates in this entry.

6.4 Ligands [i](#)

In the following table, the Atoms column lists the number of modelled atoms in the group and the number defined in the chemical component dictionary. LLDF column lists the quality of electron density of the group with respect to its neighbouring residues in protein, DNA or RNA chains. The B-factors column lists the minimum, median, 95th percentile and maximum values of B factors of atoms in the group. The column labelled 'Q< 0.9' lists the number of atoms with occupancy less than 0.9.

Mol	Type	Chain	Res	Atoms	RSCC	RSR	LLDF	B-factors(Å ²)	Q<0.9
3	PO4	A	603	5/5	0.93	0.21	6.00	36,39,44,46	0
3	PO4	A	604	5/5	0.93	0.14	3.83	66,68,70,71	0
2	2F3	B	601	32/33	0.93	0.10	1.37	18,22,34,35	0
2	2F3	A	601	32/33	0.93	0.10	1.07	15,19,43,45	0
3	PO4	A	602	5/5	0.97	0.09	0.56	21,22,22,24	0

6.5 Other polymers [i](#)

There are no such residues in this entry.