



wwPDB X-ray Structure Validation Summary Report ⓘ

Oct 31, 2017 – 05:31 AM EDT

PDB ID : 3N3Y
Title : Crystal structure of Thymidylate Synthase X (ThyX) from *Helicobacter pylori* with FAD and dUMP at 2.31Å resolution
Authors : Wang, K.; Wang, Q.; Chen, J.; Chen, L.; Jiang, H.; Shen, X.
Deposited on : unknown
Resolution : 2.31 Å(reported)

This is a wwPDB X-ray Structure Validation Summary Report for a publicly released PDB entry.

We welcome your comments at validation@mail.wwpdb.org

A user guide is available at

<http://wwpdb.org/validation/2016/XrayValidationReportHelp>

with specific help available everywhere you see the ⓘ symbol.

The following versions of software and data (see [references ⓘ](#)) were used in the production of this report:

MolProbity	:	4.02b-467
Mogul	:	1.7.2 (RC1), CSD as538be (2017)
Xtriage (Phenix)	:	1.9-1692
EDS	:	rb-20030345
Percentile statistics	:	20161228.v01 (using entries in the PDB archive December 28th 2016)
Refmac	:	5.8.0135
CCP4	:	6.5.0
Ideal geometry (proteins)	:	Engh & Huber (2001)
Ideal geometry (DNA, RNA)	:	Parkinson et al. (1996)
Validation Pipeline (wwPDB-VP)	:	rb-20030345

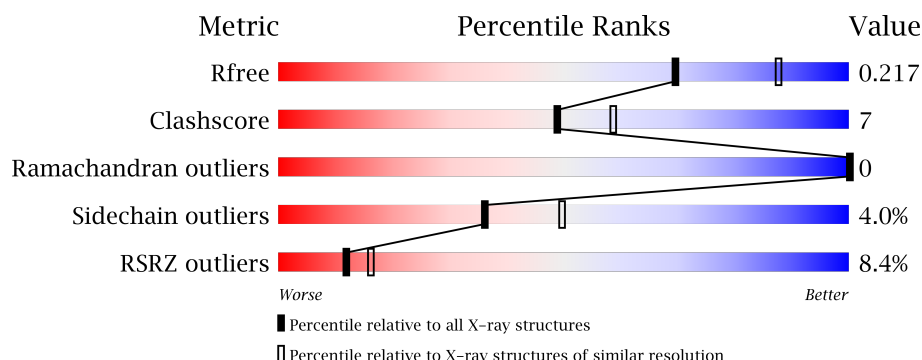
1 Overall quality at a glance ⓘ

The following experimental techniques were used to determine the structure:

X-RAY DIFFRACTION

The reported resolution of this entry is 2.31 Å.

Percentile scores (ranging between 0-100) for global validation metrics of the entry are shown in the following graphic. The table shows the number of entries on which the scores are based.



Metric	Whole archive (#Entries)	Similar resolution (#Entries, resolution range(Å))
R_{free}	100719	4130 (2.30-2.30)
Clashscore	112137	4751 (2.30-2.30)
Ramachandran outliers	110173	4705 (2.30-2.30)
Sidechain outliers	110143	4704 (2.30-2.30)
RSRZ outliers	101464	4156 (2.30-2.30)

The table below summarises the geometric issues observed across the polymeric chains and their fit to the electron density. The red, orange, yellow and green segments on the lower bar indicate the fraction of residues that contain outliers for ≥ 3 , 2, 1 and 0 types of geometric quality criteria. A grey segment represents the fraction of residues that are not modelled. The numeric value for each fraction is indicated below the corresponding segment, with a dot representing fractions $\leq 5\%$. The upper red bar (where present) indicates the fraction of residues that have poor fit to the electron density. The numeric value is given above the bar.

Mol	Chain	Length	Quality of chain
1	A	216	<div> <div>3%</div> <div>82%</div> <div>13%</div> <div>• •</div> </div>
1	B	216	<div> <div>11%</div> <div>77%</div> <div>19%</div> <div>• •</div> </div>
1	C	216	<div> <div>12%</div> <div>82%</div> <div>13%</div> <div>• •</div> </div>
1	D	216	<div> <div>7%</div> <div>79%</div> <div>17%</div> <div>• •</div> </div>

2 Entry composition

There are 4 unique types of molecules in this entry. The entry contains 7255 atoms, of which 0 are hydrogens and 0 are deuteriums.

In the tables below, the ZeroOcc column contains the number of atoms modelled with zero occupancy, the AltConf column contains the number of residues with at least one atom in alternate conformation and the Trace column contains the number of residues modelled with at most 2 atoms.

- Molecule 1 is a protein called Thymidylate synthase thyX.

Mol	Chain	Residues	Atoms					ZeroOcc	AltConf	Trace
1	A	209	Total	C	N	O	S	0	0	0
			1703	1077	299	319	8			
1	B	209	Total	C	N	O	S	0	0	0
			1703	1077	299	319	8			
1	C	208	Total	C	N	O	S	0	0	0
			1695	1073	298	316	8			
1	D	208	Total	C	N	O	S	0	1	0
			1695	1070	298	319	8			

There are 32 discrepancies between the modelled and reference sequences:

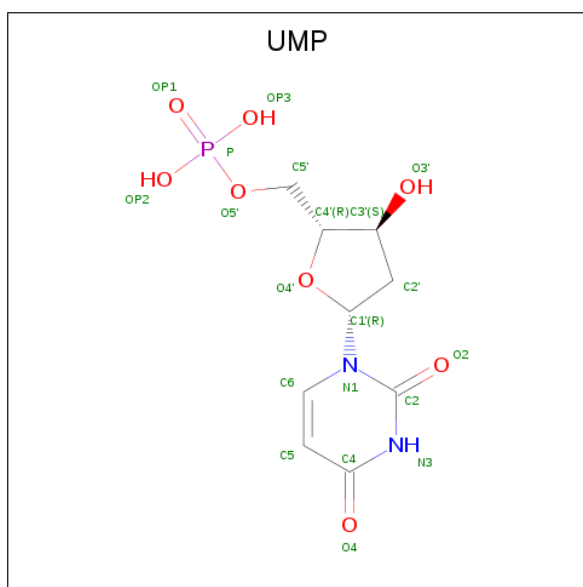
Chain	Residue	Modelled	Actual	Comment	Reference
A	-7	GLY	-	EXPRESSION TAG	UNP Q5UVJ4
A	-6	PRO	-	EXPRESSION TAG	UNP Q5UVJ4
A	-5	LEU	-	EXPRESSION TAG	UNP Q5UVJ4
A	-4	GLY	-	EXPRESSION TAG	UNP Q5UVJ4
A	-3	SER	-	EXPRESSION TAG	UNP Q5UVJ4
A	-2	PRO	-	EXPRESSION TAG	UNP Q5UVJ4
A	-1	GLU	-	EXPRESSION TAG	UNP Q5UVJ4
A	0	PHE	-	EXPRESSION TAG	UNP Q5UVJ4
B	-7	GLY	-	EXPRESSION TAG	UNP Q5UVJ4
B	-6	PRO	-	EXPRESSION TAG	UNP Q5UVJ4
B	-5	LEU	-	EXPRESSION TAG	UNP Q5UVJ4
B	-4	GLY	-	EXPRESSION TAG	UNP Q5UVJ4
B	-3	SER	-	EXPRESSION TAG	UNP Q5UVJ4
B	-2	PRO	-	EXPRESSION TAG	UNP Q5UVJ4
B	-1	GLU	-	EXPRESSION TAG	UNP Q5UVJ4
B	0	PHE	-	EXPRESSION TAG	UNP Q5UVJ4
C	-7	GLY	-	EXPRESSION TAG	UNP Q5UVJ4
C	-6	PRO	-	EXPRESSION TAG	UNP Q5UVJ4
C	-5	LEU	-	EXPRESSION TAG	UNP Q5UVJ4
C	-4	GLY	-	EXPRESSION TAG	UNP Q5UVJ4
C	-3	SER	-	EXPRESSION TAG	UNP Q5UVJ4

Continued on next page...

Continued from previous page...

Chain	Residue	Modelled	Actual	Comment	Reference
C	-2	PRO	-	EXPRESSION TAG	UNP Q5UVJ4
C	-1	GLU	-	EXPRESSION TAG	UNP Q5UVJ4
C	0	PHE	-	EXPRESSION TAG	UNP Q5UVJ4
D	-7	GLY	-	EXPRESSION TAG	UNP Q5UVJ4
D	-6	PRO	-	EXPRESSION TAG	UNP Q5UVJ4
D	-5	LEU	-	EXPRESSION TAG	UNP Q5UVJ4
D	-4	GLY	-	EXPRESSION TAG	UNP Q5UVJ4
D	-3	SER	-	EXPRESSION TAG	UNP Q5UVJ4
D	-2	PRO	-	EXPRESSION TAG	UNP Q5UVJ4
D	-1	GLU	-	EXPRESSION TAG	UNP Q5UVJ4
D	0	PHE	-	EXPRESSION TAG	UNP Q5UVJ4

- Molecule 2 is 2'-DEOXYURIDINE 5'-MONOPHOSPHATE (three-letter code: UMP) (formula: $C_9H_{13}N_2O_8P$).



Mol	Chain	Residues	Atoms					ZeroOcc	AltConf
2	A	1	Total	C	N	O	P	0	0
			20	9	2	8	1		
2	B	1	Total	C	N	O	P	0	0
			20	9	2	8	1		
2	B	1	Total	C	N	O	P	0	0
			20	9	2	8	1		
2	C	1	Total	C	N	O	P	0	0
			20	9	2	8	1		
2	D	1	Total	C	N	O	P	0	0
			20	9	2	8	1		

-
- The chemical structure of FAD (Flavin Adenine Dinucleotide) is shown. It consists of a flavin mononucleotide (FMN) part and an adenosine diphosphate (ADP) part. The FMN part includes a ribityl chain, an isoalloxazine ring system, and a ribose sugar. The ADP part includes an adenine base, a ribose sugar, and a diphosphate group. The structure is labeled with various atoms and bonds, including nitrogen (N), oxygen (O), carbon (C), and phosphorus (P). The overall structure is a complex molecule with multiple rings and functional groups.

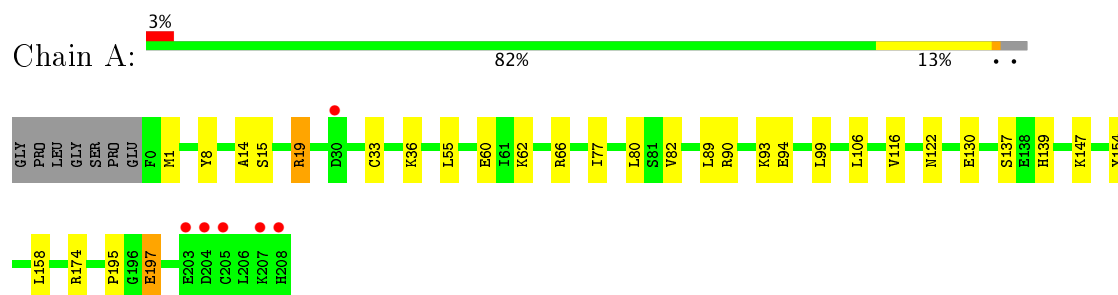
- Molecule 4 is water.

Mol	Chain	Residues	Atoms	ZeroOcc	AltConf
4	A	41	Total O 41 41	0	0
4	B	41	Total O 41 41	0	0
4	C	24	Total O 24 24	0	0
4	D	41	Total O 41 41	0	0

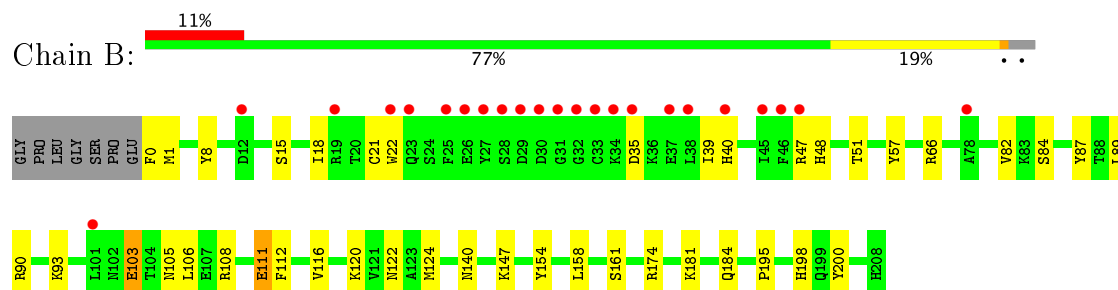
3 Residue-property plots [i](#)

These plots are drawn for all protein, RNA and DNA chains in the entry. The first graphic for a chain summarises the proportions of the various outlier classes displayed in the second graphic. The second graphic shows the sequence view annotated by issues in geometry and electron density. Residues are color-coded according to the number of geometric quality criteria for which they contain at least one outlier: green = 0, yellow = 1, orange = 2 and red = 3 or more. A red dot above a residue indicates a poor fit to the electron density ($RSRZ > 2$). Stretches of 2 or more consecutive residues without any outlier are shown as a green connector. Residues present in the sample, but not in the model, are shown in grey.

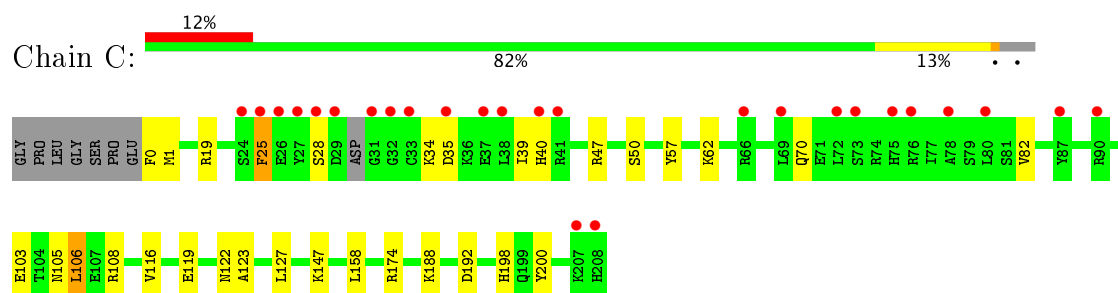
- Molecule 1: Thymidylate synthase thyX



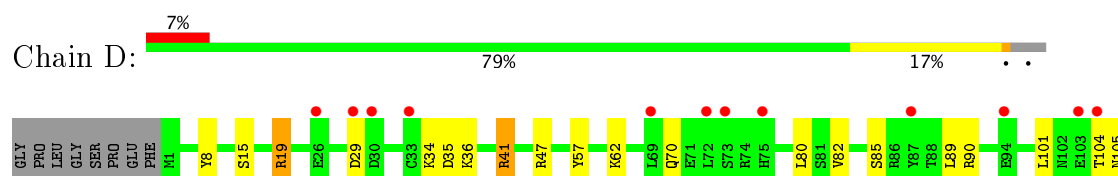
- Molecule 1: Thymidylate synthase thyX

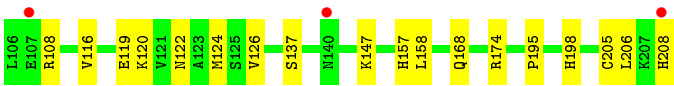


- Molecule 1: Thymidylate synthase thyX



- Molecule 1: Thymidylate synthase thyX





4 Data and refinement statistics

Property	Value	Source
Space group	P 1 21 1	Depositor
Cell constants a, b, c, α , β , γ	65.53Å 79.96Å 96.41Å 90.00° 103.14° 90.00°	Depositor
Resolution (Å)	37.69 – 2.31 37.69 – 2.31	Depositor EDS
% Data completeness (in resolution range)	99.3 (37.69-2.31) 99.3 (37.69-2.31)	Depositor EDS
R_{merge}	0.06	Depositor
R_{sym}	(Not available)	Depositor
$\langle I/\sigma(I) \rangle$ ¹	3.45 (at 2.31Å)	Xtriage
Refinement program	PHENIX 1.5_2	Depositor
R, R_{free}	0.174 , 0.223 0.169 , 0.217	Depositor DCC
R_{free} test set	2143 reflections (5.04%)	DCC
Wilson B-factor (Å ²)	36.0	Xtriage
Anisotropy	0.440	Xtriage
Bulk solvent k_{sol} (e/Å ³), B_{sol} (Å ²)	0.35 , 46.1	EDS
L-test for twinning ²	$\langle L \rangle = 0.49$, $\langle L^2 \rangle = 0.32$	Xtriage
Estimated twinning fraction	No twinning to report.	Xtriage
F_o, F_c correlation	0.96	EDS
Total number of atoms	7255	wwPDB-VP
Average B, all atoms (Å ²)	43.0	wwPDB-VP

Xtriage's analysis on translational NCS is as follows: *The largest off-origin peak in the Patterson function is 4.55% of the height of the origin peak. No significant pseudotranslation is detected.*

¹Intensities estimated from amplitudes.

²Theoretical values of $\langle |L| \rangle$, $\langle L^2 \rangle$ for acentric reflections are 0.5, 0.333 respectively for untwinned datasets, and 0.375, 0.2 for perfectly twinned datasets.

5 Model quality [i](#)

5.1 Standard geometry [i](#)

Bond lengths and bond angles in the following residue types are not validated in this section: UMP, FAD

The Z score for a bond length (or angle) is the number of standard deviations the observed value is removed from the expected value. A bond length (or angle) with $|Z| > 5$ is considered an outlier worth inspection. RMSZ is the root-mean-square of all Z scores of the bond lengths (or angles).

Mol	Chain	Bond lengths		Bond angles	
		RMSZ	$\# Z > 5$	RMSZ	$\# Z > 5$
1	A	0.45	0/1735	0.54	0/2335
1	B	0.42	0/1735	0.52	0/2335
1	C	0.40	0/1726	0.51	0/2321
1	D	0.41	0/1729	0.52	0/2327
All	All	0.42	0/6925	0.52	0/9318

There are no bond length outliers.

There are no bond angle outliers.

There are no chirality outliers.

There are no planarity outliers.

5.2 Too-close contacts [i](#)

In the following table, the Non-H and H(model) columns list the number of non-hydrogen atoms and hydrogen atoms in the chain respectively. The H(added) column lists the number of hydrogen atoms added and optimized by MolProbity. The Clashes column lists the number of clashes within the asymmetric unit, whereas Symm-Clashes lists symmetry related clashes.

Mol	Chain	Non-H	H(model)	H(added)	Clashes	Symm-Clashes
1	A	1703	0	1700	19	0
1	B	1703	0	1700	31	0
1	C	1695	0	1695	25	0
1	D	1695	0	1696	24	0
2	A	20	0	11	0	0
2	B	40	0	22	4	0
2	C	20	0	11	3	0
2	D	20	0	11	2	0
3	A	53	0	31	2	0

Continued on next page...

Continued from previous page...

Mol	Chain	Non-H	H(model)	H(added)	Clashes	Symm-Clashes
3	B	53	0	31	1	0
3	C	53	0	31	0	0
3	D	53	0	31	1	0
4	A	41	0	0	2	0
4	B	41	0	0	0	0
4	C	24	0	0	1	0
4	D	41	0	0	0	0
All	All	7255	0	6970	96	0

The all-atom clashscore is defined as the number of clashes found per 1000 atoms (including hydrogen atoms). The all-atom clashscore for this structure is 7.

The worst 5 of 96 close contacts within the same asymmetric unit are listed below, sorted by their clash magnitude.

Atom-1	Atom-2	Interatomic distance (Å)	Clash overlap (Å)
1:B:174:ARG:HH12	2:B:301:UMP:HN3	1.10	0.97
1:A:174:ARG:HH12	2:B:304:UMP:HN3	1.04	0.96
1:D:116:VAL:H	1:D:122:ASN:HD21	1.15	0.95
2:C:303:UMP:HN3	1:D:174:ARG:HH12	1.14	0.93
1:C:174:ARG:HH12	2:D:302:UMP:HN3	1.16	0.92

There are no symmetry-related clashes.

5.3 Torsion angles [i](#)

5.3.1 Protein backbone [i](#)

In the following table, the Percentiles column shows the percent Ramachandran outliers of the chain as a percentile score with respect to all X-ray entries followed by that with respect to entries of similar resolution.

The Analysed column shows the number of residues for which the backbone conformation was analysed, and the total number of residues.

Mol	Chain	Analysed	Favoured	Allowed	Outliers	Percentiles	
1	A	207/216 (96%)	204 (99%)	3 (1%)	0	100	100
1	B	207/216 (96%)	197 (95%)	10 (5%)	0	100	100
1	C	204/216 (94%)	202 (99%)	2 (1%)	0	100	100
1	D	207/216 (96%)	199 (96%)	8 (4%)	0	100	100

Continued on next page...

Continued from previous page...

Mol	Chain	Analysed	Favoured	Allowed	Outliers	Percentiles	
All	All	825/864 (96%)	802 (97%)	23 (3%)	0	100	100

There are no Ramachandran outliers to report.

5.3.2 Protein sidechains ⓘ

In the following table, the Percentiles column shows the percent sidechain outliers of the chain as a percentile score with respect to all X-ray entries followed by that with respect to entries of similar resolution.

The Analysed column shows the number of residues for which the sidechain conformation was analysed, and the total number of residues.

Mol	Chain	Analysed	Rotameric	Outliers	Percentiles	
1	A	188/193 (97%)	180 (96%)	8 (4%)	33	45
1	B	188/193 (97%)	181 (96%)	7 (4%)	39	53
1	C	187/193 (97%)	180 (96%)	7 (4%)	39	53
1	D	188/193 (97%)	180 (96%)	8 (4%)	33	45
All	All	751/772 (97%)	721 (96%)	30 (4%)	36	50

5 of 30 residues with a non-rotameric sidechain are listed below:

Mol	Chain	Res	Type
1	B	147	LYS
1	C	25	PHE
1	D	119	GLU
1	C	1	MET
1	C	103	GLU

Some sidechains can be flipped to improve hydrogen bonding and reduce clashes. 5 of 26 such sidechains are listed below:

Mol	Chain	Res	Type
1	B	198	HIS
1	C	122	ASN
1	D	169	ASN
1	B	199	GLN
1	C	105	ASN

5.3.3 RNA [i](#)

There are no RNA molecules in this entry.

5.4 Non-standard residues in protein, DNA, RNA chains [i](#)

There are no non-standard protein/DNA/RNA residues in this entry.

5.5 Carbohydrates [i](#)

There are no carbohydrates in this entry.

5.6 Ligand geometry [i](#)

9 ligands are modelled in this entry.

In the following table, the Counts columns list the number of bonds (or angles) for which Mogul statistics could be retrieved, the number of bonds (or angles) that are observed in the model and the number of bonds (or angles) that are defined in the Chemical Component Dictionary. The Link column lists molecule types, if any, to which the group is linked. The Z score for a bond length (or angle) is the number of standard deviations the observed value is removed from the expected value. A bond length (or angle) with $|Z| > 2$ is considered an outlier worth inspection. RMSZ is the root-mean-square of all Z scores of the bond lengths (or angles).

Mol	Type	Chain	Res	Link	Bond lengths			Bond angles		
					Counts	RMSZ	$\# Z > 2$	Counts	RMSZ	$\# Z > 2$
3	FAD	A	304	-	51,58,58	1.24	6 (11%)	54,89,89	1.85	7 (12%)
2	UMP	A	305	-	17,21,21	0.96	1 (5%)	23,31,31	1.58	2 (8%)
3	FAD	B	209	-	51,58,58	1.29	7 (13%)	54,89,89	1.90	8 (14%)
2	UMP	B	301	-	17,21,21	1.13	1 (5%)	23,31,31	1.79	3 (13%)
2	UMP	B	304	-	17,21,21	1.02	1 (5%)	23,31,31	1.68	2 (8%)
3	FAD	C	302	-	51,58,58	1.32	7 (13%)	54,89,89	1.92	7 (12%)
2	UMP	C	303	-	17,21,21	1.14	1 (5%)	23,31,31	1.94	3 (13%)
2	UMP	D	302	-	17,21,21	1.06	1 (5%)	23,31,31	1.71	3 (13%)
3	FAD	D	303	-	51,58,58	1.24	7 (13%)	54,89,89	1.98	7 (12%)

In the following table, the Chirals column lists the number of chiral outliers, the number of chiral centers analysed, the number of these observed in the model and the number defined in the Chemical Component Dictionary. Similar counts are reported in the Torsion and Rings columns. '-' means no outliers of that kind were identified.

Mol	Type	Chain	Res	Link	Chirals	Torsions	Rings
3	FAD	A	304	-	-	0/28/50/50	0/6/6/6
2	UMP	A	305	-	-	0/6/22/22	0/2/2/2
3	FAD	B	209	-	-	0/28/50/50	0/6/6/6
2	UMP	B	301	-	-	0/6/22/22	0/2/2/2
2	UMP	B	304	-	-	0/6/22/22	0/2/2/2
3	FAD	C	302	-	-	0/28/50/50	0/6/6/6
2	UMP	C	303	-	-	0/6/22/22	0/2/2/2
2	UMP	D	302	-	-	0/6/22/22	0/2/2/2
3	FAD	D	303	-	-	0/28/50/50	0/6/6/6

The worst 5 of 32 bond length outliers are listed below:

Mol	Chain	Res	Type	Atoms	Z	Observed(Å)	Ideal(Å)
3	B	209	FAD	C6-C5X	-2.10	1.38	1.41
3	D	303	FAD	C5X-N5	2.07	1.38	1.35
3	D	303	FAD	C1'-N10	2.16	1.50	1.48
3	C	302	FAD	C2A-N1A	2.22	1.38	1.33
3	C	302	FAD	C5X-N5	2.26	1.38	1.35

The worst 5 of 42 bond angle outliers are listed below:

Mol	Chain	Res	Type	Atoms	Z	Observed(°)	Ideal(°)
3	C	302	FAD	N3A-C2A-N1A	-10.22	119.95	128.86
3	B	209	FAD	N3A-C2A-N1A	-10.06	120.09	128.86
3	D	303	FAD	N3A-C2A-N1A	-9.98	120.17	128.86
3	A	304	FAD	N3A-C2A-N1A	-9.63	120.47	128.86
2	D	302	UMP	C2'-C1'-N1	-3.20	106.68	114.23

There are no chirality outliers.

There are no torsion outliers.

There are no ring outliers.

7 monomers are involved in 13 short contacts:

Mol	Chain	Res	Type	Clashes	Symm-Clashes
3	A	304	FAD	2	0
3	B	209	FAD	1	0
2	B	301	UMP	2	0
2	B	304	UMP	2	0
2	C	303	UMP	3	0
2	D	302	UMP	2	0
3	D	303	FAD	1	0

5.7 Other polymers [i](#)

There are no such residues in this entry.

5.8 Polymer linkage issues [i](#)

There are no chain breaks in this entry.

6 Fit of model and data [i](#)

6.1 Protein, DNA and RNA chains [i](#)

In the following table, the column labelled ‘#RSRZ> 2’ contains the number (and percentage) of RSRZ outliers, followed by percent RSRZ outliers for the chain as percentile scores relative to all X-ray entries and entries of similar resolution. The OWAB column contains the minimum, median, 95th percentile and maximum values of the occupancy-weighted average B-factor per residue. The column labelled ‘Q< 0.9’ lists the number of (and percentage) of residues with an average occupancy less than 0.9.

Mol	Chain	Analysed	<RSRZ>	#RSRZ>2	OWAB(Å ²)	Q<0.9
1	A	209/216 (96%)	0.08	6 (2%) 52 59	25, 38, 61, 79	0
1	B	209/216 (96%)	0.39	23 (11%) 6 9	22, 37, 80, 107	0
1	C	208/216 (96%)	0.66	26 (12%) 4 6	26, 42, 75, 106	0
1	D	208/216 (96%)	0.29	15 (7%) 16 22	27, 42, 69, 81	0
All	All	834/864 (96%)	0.35	70 (8%) 12 16	22, 41, 73, 107	0

The worst 5 of 70 RSRZ outliers are listed below:

Mol	Chain	Res	Type	RSRZ
1	C	33	CYS	9.9
1	C	27	TYR	9.3
1	B	31	GLY	8.5
1	C	32	GLY	7.1
1	B	25	PHE	6.7

6.2 Non-standard residues in protein, DNA, RNA chains [i](#)

There are no non-standard protein/DNA/RNA residues in this entry.

6.3 Carbohydrates [i](#)

There are no carbohydrates in this entry.

6.4 Ligands [i](#)

In the following table, the Atoms column lists the number of modelled atoms in the group and the number defined in the chemical component dictionary. LLDF column lists the quality of electron density of the group with respect to its neighbouring residues in protein, DNA or RNA chains. The B-factors column lists the minimum, median, 95th percentile and maximum values of B factors

of atoms in the group. The column labelled 'Q< 0.9' lists the number of atoms with occupancy less than 0.9.

Mol	Type	Chain	Res	Atoms	RSCC	RSR	LLDF	B-factors(\AA^2)	Q<0.9
2	UMP	A	305	20/20	0.96	0.13	-0.06	38,49,59,60	0
3	FAD	B	209	53/53	0.98	0.15	-0.20	24,28,34,35	0
2	UMP	B	301	20/20	0.98	0.14	-0.51	25,30,35,37	0
3	FAD	C	302	53/53	0.97	0.15	-0.59	26,32,38,38	0
2	UMP	C	303	20/20	0.97	0.15	-0.78	33,42,49,50	0
3	FAD	A	304	53/53	0.97	0.13	-0.79	28,34,40,42	0
3	FAD	D	303	53/53	0.98	0.13	-0.83	28,37,43,46	0
2	UMP	B	304	20/20	0.97	0.12	-1.15	28,35,38,39	0
2	UMP	D	302	20/20	0.97	0.10	-1.23	32,36,39,41	0

6.5 Other polymers [i](#)

There are no such residues in this entry.