



# wwPDB X-ray Structure Validation Summary Report ⓘ

Oct 30, 2017 – 06:18 PM EDT

PDB ID : 3N65  
Title : Structure of neuronal nitric oxide synthase S602H mutant heme domain in complex with 6,6'-(2,2'-(pyridine-3,5-diyl))bis(ethane-2,1-diyl))bis(4-methylpyridin-2-amine)  
Authors : Li, H.; Delker, S.L.; Poulos, T.L.  
Deposited on : unknown  
Resolution : 1.80 Å(reported)

This is a wwPDB X-ray Structure Validation Summary Report for a publicly released PDB entry.

We welcome your comments at [validation@mail.wwpdb.org](mailto:validation@mail.wwpdb.org)

A user guide is available at

<http://wwpdb.org/validation/2016/XrayValidationReportHelp>

with specific help available everywhere you see the ⓘ symbol.

---

The following versions of software and data (see [references ⓘ](#)) were used in the production of this report:

MolProbity : **FAILED**  
Mogul : 1.7.2 (RC1), CSD as538be (2017)  
Xtriage (Phenix) : 1.9-1692  
EDS : rb-20030345  
Percentile statistics : 20161228.v01 (using entries in the PDB archive December 28th 2016)  
Refmac : 5.8.0135  
CCP4 : 6.5.0  
Ideal geometry (proteins) : Engh & Huber (2001)  
Ideal geometry (DNA, RNA) : Parkinson et al. (1996)  
Validation Pipeline (wwPDB-VP) : rb-20030345

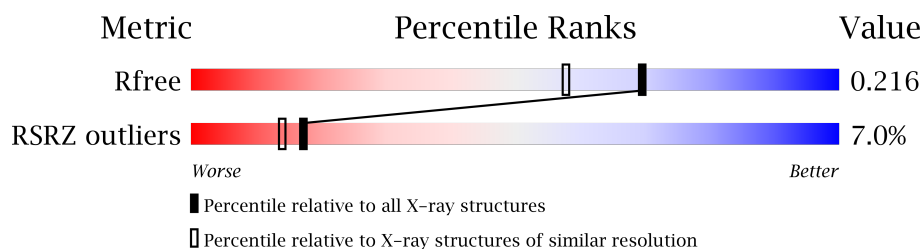
# 1 Overall quality at a glance

The following experimental techniques were used to determine the structure:

*X-RAY DIFFRACTION*

The reported resolution of this entry is 1.80 Å.

Percentile scores (ranging between 0-100) for global validation metrics of the entry are shown in the following graphic. The table shows the number of entries on which the scores are based.



Metric	Whole archive (#Entries)	Similar resolution (#Entries, resolution range(Å))
$R_{free}$	100719	4827 (1.80-1.80)
RSRZ outliers	101464	4906 (1.80-1.80)

MolProbity failed to run properly - the sequence quality summary graphics cannot be shown.

The following table lists non-polymeric compounds, carbohydrate monomers and non-standard residues in protein, DNA, RNA chains that are outliers for geometric or electron-density-fit criteria:

Mol	Type	Chain	Res	Chirality	Geometry	Clashes	Electron density
3	H4B	B	760[B]	-	-	-	X
8	MTL	B	870	-	-	-	X

## 2 Entry composition [i](#)

There are 9 unique types of molecules in this entry. The entry contains 7671 atoms, of which 0 are hydrogens and 0 are deuteriums.

In the tables below, the ZeroOcc column contains the number of atoms modelled with zero occupancy, the AltConf column contains the number of residues with at least one atom in alternate conformation and the Trace column contains the number of residues modelled with at most 2 atoms.

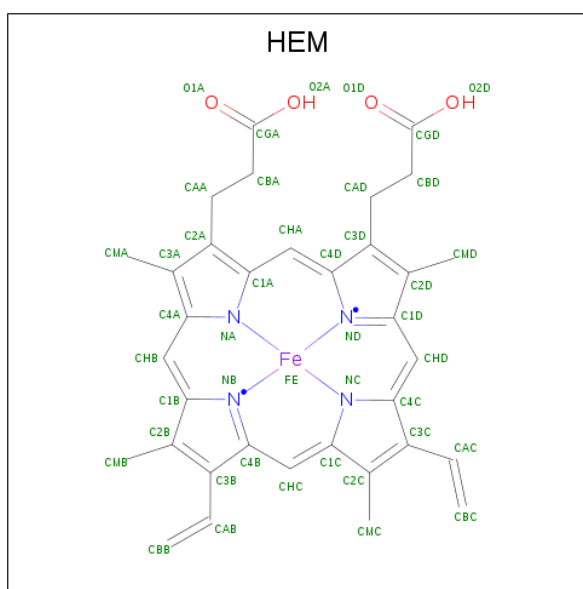
- Molecule 1 is a protein called Nitric oxide synthase.

Mol	Chain	Residues	Atoms					ZeroOcc	AltConf	Trace
1	A	407	Total	C	N	O	S	0	5	0
			3344	2144	571	607	22			
1	B	411	Total	C	N	O	S	0	11	0
			3401	2180	580	618	23			

There are 2 discrepancies between the modelled and reference sequences:

Chain	Residue	Modelled	Actual	Comment	Reference
A	602	HIS	SER	ENGINEERED MUTATION	UNP P29476
B	602	HIS	SER	ENGINEERED MUTATION	UNP P29476

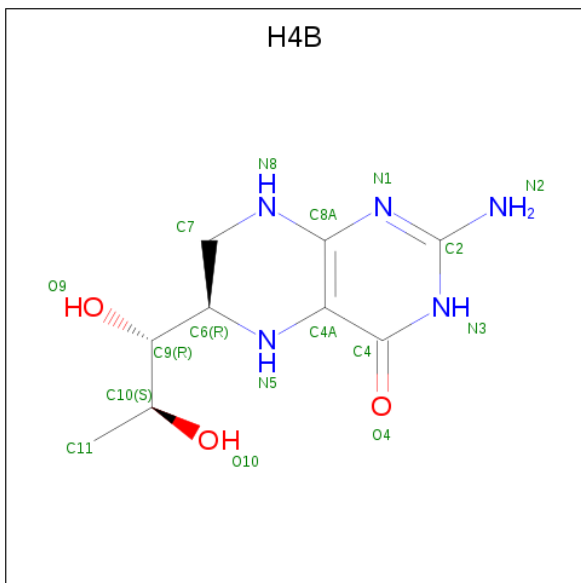
- Molecule 2 is PROTOPORPHYRIN IX CONTAINING FE (three-letter code: HEM) (formula:  $C_{34}H_{32}FeN_4O_4$ ).



Continued from previous page...

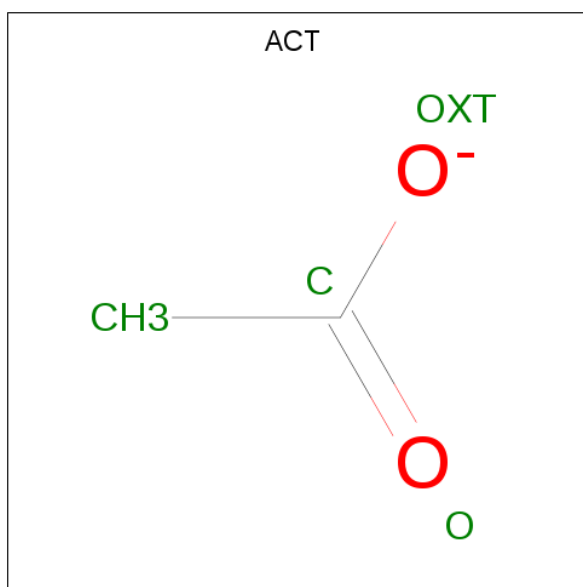
Mol	Chain	Residues	Atoms					ZeroOcc	AltConf
2	B	1	Total	C	Fe	N	O	0	0
			43	34	1	4	4		

- Molecule 3 is 5,6,7,8-TETRAHYDROBIOPTERIN (three-letter code: H4B) (formula:  $C_9H_{15}N_5O_3$ ).



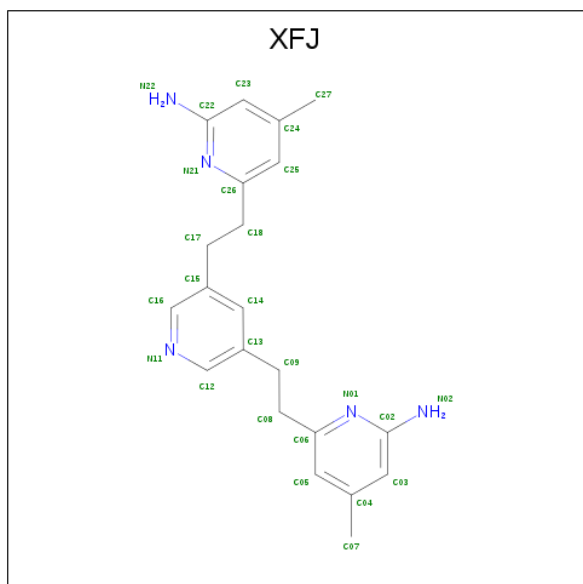
Mol	Chain	Residues	Atoms				ZeroOcc	AltConf
3	A	1	Total	C	N	O	0	1
			17	9	5	3		
3	B	1	Total	C	N	O	0	1
			17	9	5	3		

- Molecule 4 is ACETATE ION (three-letter code: ACT) (formula:  $C_2H_3O_2$ ).



Mol	Chain	Residues	Atoms			ZeroOcc	AltConf
4	A	1	Total	C	O	0	0
			4	2	2		
4	B	1	Total	C	O	0	0
			4	2	2		

- Molecule 5 is 6,6'-(pyridine-3,5-diyl)diethane-2,1-diylbis(4-methylpyridin-2-amine) (three-letter code: XFJ) (formula: C<sub>21</sub>H<sub>25</sub>N<sub>5</sub>).



Mol	Chain	Residues	Atoms			ZeroOcc	AltConf
5	A	1	Total	C	N	0	0
			26	21	5		

Continued on next page...

*Continued from previous page...*

Mol	Chain	Residues	Atoms			ZeroOcc	AltConf
5	B	1	Total	C	N	0	1
			26	21	5		
5	B	1	Total	C	N	0	0
			26	21	5		
5	B	1	Total	C	N	0	1
			26	21	5		

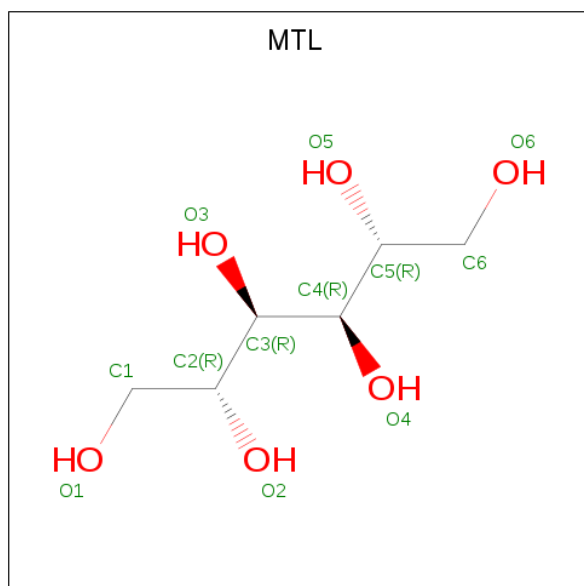
- Molecule 6 is CHLORIDE ION (three-letter code: CL) (formula: Cl).

Mol	Chain	Residues	Atoms		ZeroOcc	AltConf
6	B	1	Total	Cl	0	0
			1	1		
6	A	1	Total	Cl	0	0
			1	1		

- Molecule 7 is ZINC ION (three-letter code: ZN) (formula: Zn).

Mol	Chain	Residues	Atoms		ZeroOcc	AltConf
7	A	3	Total	Zn	0	0
			3	3		

- Molecule 8 is D-MANNITOL (three-letter code: MTL) (formula: C<sub>6</sub>H<sub>14</sub>O<sub>6</sub>).



Mol	Chain	Residues	Atoms			ZeroOcc	AltConf
8	B	1	Total	C	O	0	0
			12	6	6		

- Molecule 9 is water.

Mol	Chain	Residues	Atoms		ZeroOcc	AltConf
9	A	292	Total 292	O 292	0	0
9	B	385	Total 385	O 385	0	0

MolProbity failed to run properly - this section is therefore empty.

### 3 Data and refinement statistics

Property	Value	Source
Space group	P 21 21 21	Depositor
Cell constants a, b, c, $\alpha$ , $\beta$ , $\gamma$	51.98Å 110.58Å 164.23Å 90.00° 90.00° 90.00°	Depositor
Resolution (Å)	47.36 – 1.80 45.86 – 1.80	Depositor EDS
% Data completeness (in resolution range)	99.4 (47.36-1.80) 99.4 (45.86-1.80)	Depositor EDS
$R_{merge}$	0.06	Depositor
$R_{sym}$	0.06	Depositor
$\langle I/\sigma(I) \rangle$ <sup>1</sup>	2.14 (at 1.79Å)	Xtriage
Refinement program	REFMAC	Depositor
R, $R_{free}$	0.167 , 0.194 0.189 , 0.216	Depositor DCC
$R_{free}$ test set	4396 reflections (5.25%)	DCC
Wilson B-factor (Å <sup>2</sup> )	25.3	Xtriage
Anisotropy	0.375	Xtriage
Bulk solvent $k_{sol}$ (e/Å <sup>3</sup> ), $B_{sol}$ (Å <sup>2</sup> )	0.37 , 40.6	EDS
L-test for twinning <sup>2</sup>	$\langle  L  \rangle = 0.49$ , $\langle L^2 \rangle = 0.32$	Xtriage
Estimated twinning fraction	No twinning to report.	Xtriage
$F_o, F_c$ correlation	0.96	EDS
Total number of atoms	7671	wwPDB-VP
Average B, all atoms (Å <sup>2</sup> )	31.0	wwPDB-VP

Xtriage's analysis on translational NCS is as follows: *The largest off-origin peak in the Patterson function is 4.02% of the height of the origin peak. No significant pseudotranslation is detected.*

<sup>1</sup>Intensities estimated from amplitudes.

<sup>2</sup>Theoretical values of  $\langle |L| \rangle$ ,  $\langle L^2 \rangle$  for acentric reflections are 0.5, 0.333 respectively for untwinned datasets, and 0.375, 0.2 for perfectly twinned datasets.



## 4 Model quality [i](#)

### 4.1 Standard geometry [i](#)

MolProbity failed to run properly - this section is therefore empty.

### 4.2 Too-close contacts [i](#)

MolProbity failed to run properly - this section is therefore empty.

### 4.3 Torsion angles [i](#)

#### 4.3.1 Protein backbone [i](#)

MolProbity failed to run properly - this section is therefore empty.

#### 4.3.2 Protein sidechains [i](#)

MolProbity failed to run properly - this section is therefore empty.

#### 4.3.3 RNA [i](#)

MolProbity failed to run properly - this section is therefore empty.

### 4.4 Non-standard residues in protein, DNA, RNA chains [i](#)

There are no non-standard protein/DNA/RNA residues in this entry.

### 4.5 Carbohydrates [i](#)

There are no carbohydrates in this entry.

### 4.6 Ligand geometry [i](#)

Of 16 ligands modelled in this entry, 5 are monoatomic - leaving 11 for Mogul analysis.

In the following table, the Counts columns list the number of bonds (or angles) for which Mogul statistics could be retrieved, the number of bonds (or angles) that are observed in the model and the number of bonds (or angles) that are defined in the Chemical Component Dictionary. The Link column lists molecule types, if any, to which the group is linked. The Z score for a bond

length (or angle) is the number of standard deviations the observed value is removed from the expected value. A bond length (or angle) with  $|Z| > 2$  is considered an outlier worth inspection. RMSZ is the root-mean-square of all Z scores of the bond lengths (or angles).

Mol	Type	Chain	Res	Link	Bond lengths			Bond angles		
					Counts	RMSZ	# Z  > 2	Counts	RMSZ	# Z  > 2
2	HEM	A	750	1	28,50,50	2.20	9 (32%)	17,82,82	2.37	4 (23%)
3	H4B	A	760[B]	-	14,18,18	0.92	0	12,26,26	2.53	7 (58%)
5	XFJ	A	800	-	28,28,28	0.68	0	38,38,38	2.33	12 (31%)
4	ACT	A	860	-	1,3,3	0.90	0	0,3,3	0.00	-
5	XFJ	B	719[A]	7	28,28,28	0.52	0	38,38,38	1.78	11 (28%)
2	HEM	B	750	1	28,50,50	2.17	9 (32%)	17,82,82	2.00	4 (23%)
3	H4B	B	760[B]	-	14,18,18	1.20	1 (7%)	12,26,26	2.67	8 (66%)
5	XFJ	B	800	-	28,28,28	0.86	1 (3%)	38,38,38	2.27	15 (39%)
5	XFJ	B	805[A]	7	28,28,28	0.62	0	38,38,38	2.13	16 (42%)
4	ACT	B	860	-	1,3,3	1.87	0	0,3,3	0.00	-
8	MTL	B	870	-	11,11,11	0.68	0	14,14,14	0.62	0

In the following table, the Chirals column lists the number of chiral outliers, the number of chiral centers analysed, the number of these observed in the model and the number defined in the Chemical Component Dictionary. Similar counts are reported in the Torsion and Rings columns. '-' means no outliers of that kind were identified.

Mol	Type	Chain	Res	Link	Chirals	Torsions	Rings
2	HEM	A	750	1	-	0/6/54/54	0/0/8/8
3	H4B	A	760[B]	-	-	0/8/17/17	0/2/2/2
5	XFJ	A	800	-	-	0/10/10/10	0/3/3/3
4	ACT	A	860	-	-	0/0/0/0	0/0/0/0
5	XFJ	B	719[A]	7	-	0/10/10/10	0/3/3/3
2	HEM	B	750	1	-	0/6/54/54	0/0/8/8
3	H4B	B	760[B]	-	-	0/8/17/17	0/2/2/2
5	XFJ	B	800	-	-	0/10/10/10	0/3/3/3
5	XFJ	B	805[A]	7	-	0/10/10/10	0/3/3/3
4	ACT	B	860	-	-	0/0/0/0	0/0/0/0
8	MTL	B	870	-	-	0/16/16/16	0/0/0/0

The worst 5 of 20 bond length outliers are listed below:

Mol	Chain	Res	Type	Atoms	Z	Observed(Å)	Ideal(Å)
2	A	750	HEM	C3B-C2B	-4.66	1.34	1.40
2	B	750	HEM	C3C-C2C	-4.42	1.34	1.40
2	A	750	HEM	C3C-C2C	-4.12	1.34	1.40
2	B	750	HEM	C3B-C2B	-3.81	1.35	1.40

*Continued on next page...*

*Continued from previous page...*

Mol	Chain	Res	Type	Atoms	Z	Observed(Å)	Ideal(Å)
3	B	760[B]	H4B	C4-C4A	-3.10	1.37	1.41

The worst 5 of 77 bond angle outliers are listed below:

Mol	Chain	Res	Type	Atoms	Z	Observed(°)	Ideal(°)
2	A	750	HEM	CBD-CAD-C3D	-6.58	99.91	112.47
2	B	750	HEM	CBD-CAD-C3D	-6.01	101.01	112.47
5	A	800	XFJ	C05-C06-N01	-3.86	118.72	122.91
5	B	800	XFJ	C05-C06-N01	-3.76	118.83	122.91
2	A	750	HEM	CMA-C3A-C4A	-3.73	122.73	128.46

There are no chirality outliers.

There are no torsion outliers.

There are no ring outliers.

No monomer is involved in short contacts.

## 4.7 Other polymers

There are no such residues in this entry.

## 4.8 Polymer linkage issues

There are no chain breaks in this entry.

## 5 Fit of model and data [i](#)

### 5.1 Protein, DNA and RNA chains [i](#)

In the following table, the column labelled ‘#RSRZ> 2’ contains the number (and percentage) of RSRZ outliers, followed by percent RSRZ outliers for the chain as percentile scores relative to all X-ray entries and entries of similar resolution. The OWAB column contains the minimum, median, 95<sup>th</sup> percentile and maximum values of the occupancy-weighted average B-factor per residue. The column labelled ‘Q< 0.9’ lists the number of (and percentage) of residues with an average occupancy less than 0.9.

Mol	Chain	Analysed	<RSRZ>	#RSRZ>2	OWAB(Å <sup>2</sup> )	Q<0.9
1	A	407/422 (96%)	0.51	36 (8%) 11 9	17, 34, 61, 77	0
1	B	411/422 (97%)	0.30	21 (5%) 29 24	16, 26, 47, 66	0
All	All	818/844 (96%)	0.41	57 (6%) 17 14	16, 29, 57, 77	0

The worst 5 of 57 RSRZ outliers are listed below:

Mol	Chain	Res	Type	RSRZ
1	B	350	THR	5.9
1	A	715	VAL	5.9
1	A	355	PHE	5.2
1	A	488	PRO	5.1
1	A	299	ARG	5.1

### 5.2 Non-standard residues in protein, DNA, RNA chains [i](#)

There are no non-standard protein/DNA/RNA residues in this entry.

### 5.3 Carbohydrates [i](#)

There are no carbohydrates in this entry.

### 5.4 Ligands [i](#)

In the following table, the Atoms column lists the number of modelled atoms in the group and the number defined in the chemical component dictionary. LLDF column lists the quality of electron density of the group with respect to its neighbouring residues in protein, DNA or RNA chains. The B-factors column lists the minimum, median, 95<sup>th</sup> percentile and maximum values of B factors of atoms in the group. The column labelled ‘Q< 0.9’ lists the number of atoms with occupancy less than 0.9.

Mol	Type	Chain	Res	Atoms	RSCC	RSR	LLDF	B-factors( $\text{\AA}^2$ )	Q<0.9
3	H4B	B	760[B]	17/17	0.90	0.29	3.51	17,19,21,23	17
8	MTL	B	870	12/12	0.86	0.17	2.20	25,34,36,36	0
3	H4B	A	760[B]	17/17	0.89	0.21	1.63	43,45,51,52	12
2	HEM	B	750	43/43	0.98	0.19	1.07	14,18,32,40	0
5	XFJ	B	719[A]	26/26	0.90	0.19	0.65	14,25,32,33	26
2	HEM	A	750	43/43	0.98	0.15	0.47	18,21,32,39	0
5	XFJ	B	805[A]	26/26	0.88	0.17	0.16	7,19,28,28	26
4	ACT	A	860	4/4	0.97	0.11	-0.09	38,39,40,41	0
6	CL	B	910	1/1	0.91	0.14	-0.39	31,31,31,31	0
6	CL	A	910	1/1	0.98	0.13	-0.50	29,29,29,29	0
7	ZN	A	901	1/1	0.98	0.10	-1.09	22,22,22,22	1
7	ZN	A	719	1/1	0.98	0.11	-1.19	23,23,23,23	1
7	ZN	A	900	1/1	0.99	0.07	-1.38	25,25,25,25	0
5	XFJ	B	800	26/26	0.95	0.11	-1.56	12,18,21,25	0
5	XFJ	A	800	26/26	0.94	0.10	-1.64	13,18,22,23	0
4	ACT	B	860	4/4	0.95	0.08	-2.56	28,32,33,34	0

## 5.5 Other polymers [i](#)

There are no such residues in this entry.