



# Full wwPDB X-ray Structure Validation Report ⓘ

Feb 13, 2017 – 03:24 pm GMT

PDB ID : 1N7J  
Title : The structure of Phenylethanolamine N-methyltransferase in complex with S-adenosylhomocysteine and an iodinated inhibitor  
Authors : McMillan, F.M.; Archbold, J.; McLeish, M.J.; Caine, J.M.; Criscione, K.R.; Grunewald, G.L.; Martin, J.L.  
Deposited on : 2002-11-15  
Resolution : 2.70 Å(reported)

This is a Full wwPDB X-ray Structure Validation Report for a publicly released PDB entry.

We welcome your comments at [validation@mail.wwpdb.org](mailto:validation@mail.wwpdb.org)

A user guide is available at

<http://wwpdb.org/validation/2016/XrayValidationReportHelp>

with specific help available everywhere you see the ⓘ symbol.

---

The following versions of software and data (see [references ⓘ](#)) were used in the production of this report:

MolProbity	:	4.02b-467
Mogul	:	1.7.2 (RC1), CSD as538be (2017)
Xtriage (Phenix)	:	1.9-1692
EDS	:	trunk28620
Percentile statistics	:	20161228.v01 (using entries in the PDB archive December 28th 2016)
Refmac	:	5.8.0135
CCP4	:	6.5.0
Ideal geometry (proteins)	:	Engh & Huber (2001)
Ideal geometry (DNA, RNA)	:	Parkinson et al. (1996)
Validation Pipeline (wwPDB-VP)	:	recalc28949

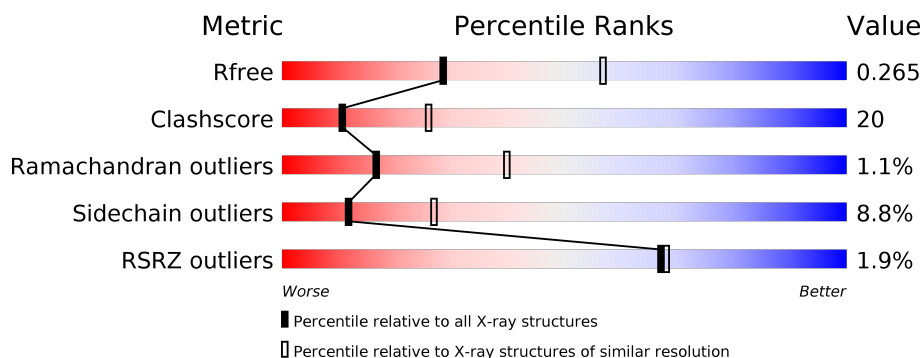
# 1 Overall quality at a glance

The following experimental techniques were used to determine the structure:

## *X-RAY DIFFRACTION*

The reported resolution of this entry is 2.70 Å.

Percentile scores (ranging between 0-100) for global validation metrics of the entry are shown in the following graphic. The table shows the number of entries on which the scores are based.



Metric	Whole archive (#Entries)	Similar resolution (#Entries, resolution range(Å))
$R_{free}$	100719	2259 (2.70-2.70)
Clashscore	112137	2590 (2.70-2.70)
Ramachandran outliers	110173	2550 (2.70-2.70)
Sidechain outliers	110143	2550 (2.70-2.70)
RSRZ outliers	101464	2275 (2.70-2.70)

The table below summarises the geometric issues observed across the polymeric chains and their fit to the electron density. The red, orange, yellow and green segments on the lower bar indicate the fraction of residues that contain outliers for  $\geq 3$ , 2, 1 and 0 types of geometric quality criteria. A grey segment represents the fraction of residues that are not modelled. The numeric value for each fraction is indicated below the corresponding segment, with a dot representing fractions  $\leq 5\%$ . The upper red bar (where present) indicates the fraction of residues that have poor fit to the electron density. The numeric value is given above the bar.

Mol	Chain	Length	Quality of chain
1	A	282	
1	B	282	

The following table lists non-polymeric compounds, carbohydrate monomers and non-standard residues in protein, DNA, RNA chains that are outliers for geometric or electron-density-fit criteria:

Mol	Type	Chain	Res	Chirality	Geometry	Clashes	Electron density
3	IDI	A	3003	-	-	X	X

## 2 Entry composition [i](#)

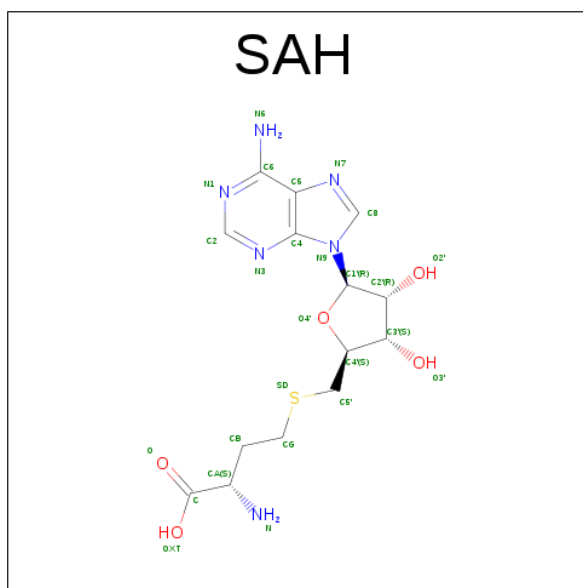
There are 4 unique types of molecules in this entry. The entry contains 4195 atoms, of which 0 are hydrogens and 0 are deuteriums.

In the tables below, the ZeroOcc column contains the number of atoms modelled with zero occupancy, the AltConf column contains the number of residues with at least one atom in alternate conformation and the Trace column contains the number of residues modelled with at most 2 atoms.

- Molecule 1 is a protein called Phenylethanolamine N-methyltransferase.

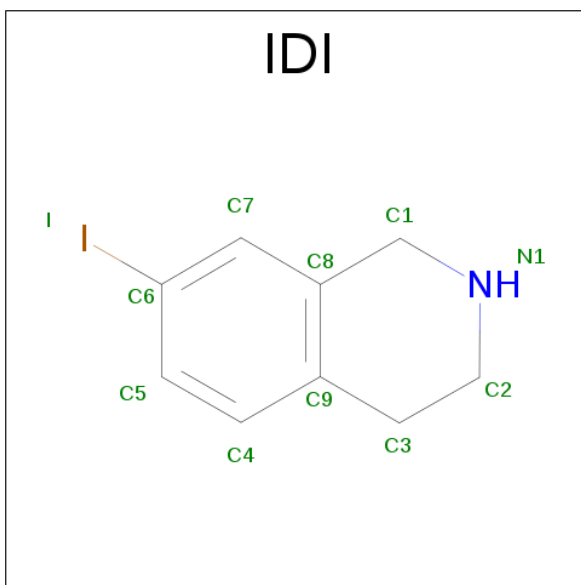
Mol	Chain	Residues	Atoms					ZeroOcc	AltConf	Trace
1	A	261	Total	C	N	O	S	0	0	0
			2002	1275	350	368	9			
1	B	267	Total	C	N	O	S	0	0	0
			2063	1310	363	381	9			

- Molecule 2 is S-ADENOSYL-L-HOMOCYSTEINE (three-letter code: SAH) (formula:  $C_{14}H_{20}N_6O_5S$ ).



Mol	Chain	Residues	Atoms					ZeroOcc	AltConf
2	A	1	Total	C	N	O	S	0	0
			26	14	6	5	1		
2	B	1	Total	C	N	O	S	0	0
			26	14	6	5	1		

- Molecule 3 is 7-iodo-1,2,3,4-tetrahydro-isoquinoline (three-letter code: IDI) (formula:  $C_9H_{10}IN$ ).



Mol	Chain	Residues	Atoms				ZeroOcc	AltConf
3	B	1	Total	C	I	N	0	0
			11	9	1	1		
3	A	1	Total	C	I	N	0	0
			11	9	1	1		

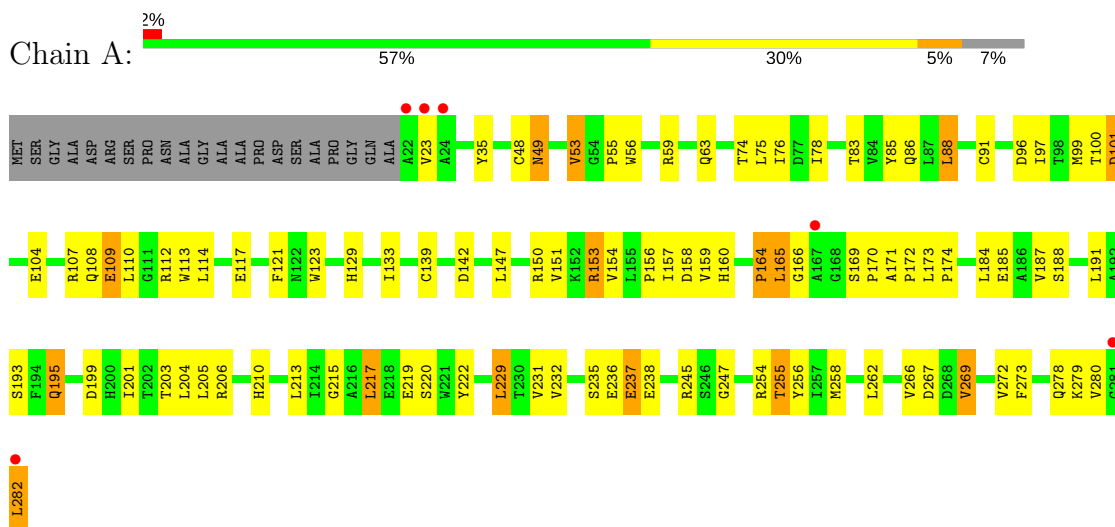
- Molecule 4 is water.

Mol	Chain	Residues	Atoms		ZeroOcc	AltConf
4	A	25	Total	O	0	0
			25	25		
4	B	31	Total	O	0	0
			31	31		

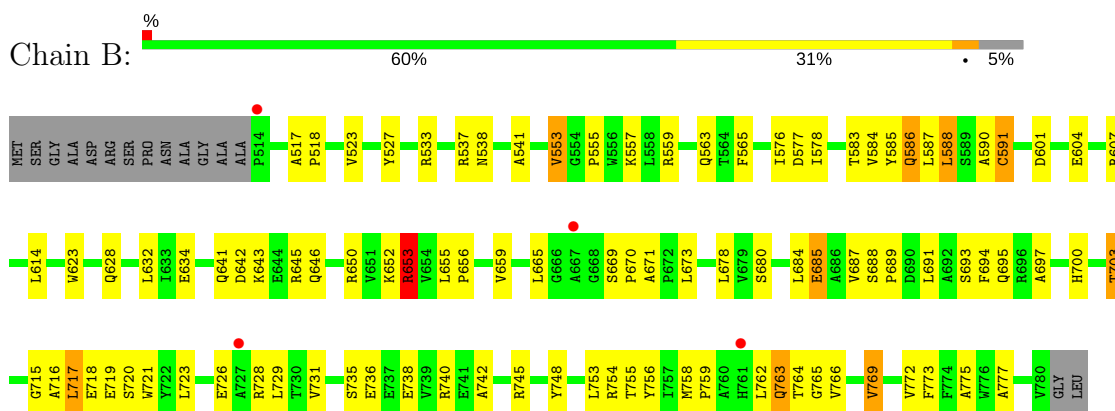
### 3 Residue-property plots [i](#)

These plots are drawn for all protein, RNA and DNA chains in the entry. The first graphic for a chain summarises the proportions of the various outlier classes displayed in the second graphic. The second graphic shows the sequence view annotated by issues in geometry and electron density. Residues are color-coded according to the number of geometric quality criteria for which they contain at least one outlier: green = 0, yellow = 1, orange = 2 and red = 3 or more. A red dot above a residue indicates a poor fit to the electron density ( $RSRZ > 2$ ). Stretches of 2 or more consecutive residues without any outlier are shown as a green connector. Residues present in the sample, but not in the model, are shown in grey.

#### • Molecule 1: Phenylethanolamine N-methyltransferase



#### • Molecule 1: Phenylethanolamine N-methyltransferase



## 4 Data and refinement statistics

Property	Value	Source
Space group	P 43 21 2	Depositor
Cell constants a, b, c, $\alpha$ , $\beta$ , $\gamma$	94.74Å 94.74Å 186.90Å 90.00° 90.00° 90.00°	Depositor
Resolution (Å)	31.39 – 2.70 31.39 – 2.70	Depositor EDS
% Data completeness (in resolution range)	91.4 (31.39-2.70) 91.5 (31.39-2.70)	Depositor EDS
$R_{merge}$	0.07	Depositor
$R_{sym}$	(Not available)	Depositor
$\langle I/\sigma(I) \rangle$ <sup>1</sup>	2.12 (at 2.68Å)	Xtriage
Refinement program	CNS 1.1	Depositor
R, $R_{free}$	0.232 , 0.268 0.228 , 0.265	Depositor DCC
$R_{free}$ test set	2192 reflections (11.02%)	DCC
Wilson B-factor (Å <sup>2</sup> )	44.7	Xtriage
Anisotropy	0.352	Xtriage
Bulk solvent $k_{sol}$ (e/Å <sup>3</sup> ), $B_{sol}$ (Å <sup>2</sup> )	0.31 , 38.2	EDS
L-test for twinning <sup>2</sup>	$\langle  L  \rangle = 0.48$ , $\langle L^2 \rangle = 0.31$	Xtriage
Estimated twinning fraction	No twinning to report.	Xtriage
$F_o, F_c$ correlation	0.92	EDS
Total number of atoms	4195	wwPDB-VP
Average B, all atoms (Å <sup>2</sup> )	46.0	wwPDB-VP

Xtriage's analysis on translational NCS is as follows: *The largest off-origin peak in the Patterson function is 3.29% of the height of the origin peak. No significant pseudotranslation is detected.*

<sup>1</sup>Intensities estimated from amplitudes.

<sup>2</sup>Theoretical values of  $\langle |L| \rangle$ ,  $\langle L^2 \rangle$  for acentric reflections are 0.5, 0.333 respectively for untwinned datasets, and 0.375, 0.2 for perfectly twinned datasets.

## 5 Model quality

### 5.1 Standard geometry

Bond lengths and bond angles in the following residue types are not validated in this section: SAH, IDI

The Z score for a bond length (or angle) is the number of standard deviations the observed value is removed from the expected value. A bond length (or angle) with  $|Z| > 5$  is considered an outlier worth inspection. RMSZ is the root-mean-square of all Z scores of the bond lengths (or angles).

Mol	Chain	Bond lengths		Bond angles	
		RMSZ	$\# Z  > 5$	RMSZ	$\# Z  > 5$
1	A	0.39	0/2053	0.65	0/2801
1	B	0.44	1/2116 (0.0%)	0.66	0/2884
All	All	0.42	1/4169 (0.0%)	0.66	0/5685

All (1) bond length outliers are listed below:

Mol	Chain	Res	Type	Atoms	Z	Observed(Å)	Ideal(Å)
1	B	591	CYS	CB-SG	-5.61	1.72	1.81

There are no bond angle outliers.

There are no chirality outliers.

There are no planarity outliers.

### 5.2 Too-close contacts

In the following table, the Non-H and H(model) columns list the number of non-hydrogen atoms and hydrogen atoms in the chain respectively. The H(added) column lists the number of hydrogen atoms added and optimized by MolProbity. The Clashes column lists the number of clashes within the asymmetric unit, whereas Symm-Clashes lists symmetry related clashes.

Mol	Chain	Non-H	H(model)	H(added)	Clashes	Symm-Clashes
1	A	2002	0	1941	92	0
1	B	2063	0	2018	81	0
2	A	26	0	19	0	0
2	B	26	0	19	1	0
3	A	11	0	10	7	0
3	B	11	0	10	3	0
4	A	25	0	0	2	0
4	B	31	0	0	0	0

*Continued on next page...*

*Continued from previous page...*

Mol	Chain	Non-H	H(model)	H(added)	Clashes	Symm-Clashes
All	All	4195	0	4017	167	0

The all-atom clashscore is defined as the number of clashes found per 1000 atoms (including hydrogen atoms). The all-atom clashscore for this structure is 20.

All (167) close contacts within the same asymmetric unit are listed below, sorted by their clash magnitude.

Atom-1	Atom-2	Interatomic distance (Å)	Clash overlap (Å)
1:A:188:SER:HB2	1:A:193:SER:HB2	1.37	1.06
1:B:695:GLN:NE2	1:B:742:ALA:HA	1.90	0.86
1:A:258:MET:CE	3:A:3003:IDI:I	2.96	0.83
1:A:237:GLU:HG3	1:B:559:ARG:HH12	1.44	0.82
1:B:559:ARG:HG2	1:B:563:GLN:HE21	1.45	0.82
1:A:258:MET:HE2	3:A:3003:IDI:I	2.50	0.80
1:B:659:VAL:CG1	1:B:697:ALA:HB1	2.11	0.80
1:B:735:SER:OG	1:B:738:GLU:HG3	1.82	0.79
1:B:758:MET:CE	3:B:3002:IDI:I	3.01	0.79
1:A:195:GLN:HE22	1:A:245:ARG:CB	1.96	0.78
1:B:758:MET:HE1	3:B:3002:IDI:I	2.54	0.78
1:A:171:ALA:O	1:A:173:LEU:HD12	1.84	0.77
1:B:719:GLU:OE1	1:B:769:VAL:HG13	1.84	0.77
1:B:652:LYS:O	1:B:653:ARG:HB3	1.84	0.77
1:A:258:MET:HE1	3:A:3003:IDI:I	2.56	0.75
1:A:254:ARG:HG2	1:B:740:ARG:NH2	2.01	0.74
1:B:553:VAL:CG2	1:B:762:LEU:HD13	2.18	0.74
1:A:229:LEU:H	1:A:229:LEU:HD22	1.54	0.73
1:A:153:ARG:NH2	1:A:172:PRO:HD3	2.04	0.73
1:B:585:TYR:HA	1:B:588:LEU:HD22	1.73	0.70
1:A:237:GLU:CG	1:B:559:ARG:HH12	2.03	0.70
1:B:700:HIS:O	1:B:703:THR:HB	1.92	0.69
1:A:113:TRP:CH2	1:A:147:LEU:HD23	2.27	0.68
1:A:99:MET:HE3	1:A:110:LEU:HD13	1.76	0.68
1:A:23:VAL:HG21	1:A:187:VAL:O	1.94	0.67
1:A:267:ASP:OD1	1:A:269:VAL:HG23	1.95	0.67
1:A:188:SER:O	1:A:232:VAL:HG23	1.96	0.65
1:A:266:VAL:HG23	1:A:267:ASP:OD2	1.97	0.65
1:A:110:LEU:O	1:A:114:LEU:HD23	1.97	0.65
1:A:255:THR:HG21	1:B:755:THR:HB	1.79	0.65
1:A:100:THR:O	1:A:101:ASP:HB2	1.96	0.64
1:B:753:LEU:HD13	1:B:775:ALA:HB2	1.79	0.64
1:B:758:MET:HE3	3:B:3002:IDI:I	2.67	0.64

*Continued on next page...*

*Continued from previous page...*

Atom-1	Atom-2	Interatomic distance (Å)	Clash overlap (Å)
1:A:112:ARG:HA	1:A:117:GLU:HB2	1.77	0.64
1:B:553:VAL:HG22	1:B:762:LEU:HD13	1.78	0.64
1:A:99:MET:CE	1:A:110:LEU:HD13	2.28	0.64
1:A:235:SER:OG	1:A:238:GLU:HG3	1.98	0.63
1:A:217:LEU:HD13	1:A:273:PHE:HD2	1.61	0.63
1:B:691:LEU:HD22	1:B:738:GLU:OE1	1.98	0.62
1:B:764:THR:OG1	1:B:766:VAL:HG22	1.99	0.62
1:A:229:LEU:N	1:A:229:LEU:HD22	2.14	0.61
1:A:85:TYR:HA	1:A:88:LEU:HD22	1.82	0.61
1:A:48:CYS:O	1:A:49:ASN:HB3	2.01	0.60
1:A:91:CYS:HA	1:A:97:ILE:HD11	1.82	0.60
1:B:688:SER:HB2	1:B:693:SER:HB3	1.84	0.60
1:B:655:LEU:HD11	1:B:670:PRO:HG2	1.83	0.60
1:B:653:ARG:HG3	1:B:655:LEU:HG	1.83	0.59
1:B:634:GLU:OE2	1:B:643:LYS:NZ	2.35	0.59
1:B:748:TYR:HB3	1:B:777:ALA:HB1	1.86	0.58
1:A:48:CYS:O	1:A:49:ASN:CB	2.52	0.57
1:B:717:LEU:HD13	1:B:773:PHE:HD2	1.69	0.57
1:A:109:GLU:HA	1:A:112:ARG:NH1	2.19	0.57
3:A:3003:IDI:HC11	4:A:1052:HOH:O	2.04	0.57
1:A:255:THR:CG2	1:B:755:THR:HB	2.35	0.57
1:B:764:THR:O	1:B:766:VAL:N	2.38	0.56
1:A:217:LEU:HD13	1:A:273:PHE:CD2	2.39	0.56
1:A:219:GLU:HG2	1:A:231:VAL:HG21	1.88	0.56
1:B:759:PRO:O	1:B:763:GLN:HG2	2.07	0.54
1:B:764:THR:C	1:B:766:VAL:H	2.11	0.54
1:B:715:GLY:O	1:B:772:VAL:HG13	2.08	0.54
1:A:267:ASP:OD1	1:A:269:VAL:CG2	2.56	0.53
1:A:158:ASP:OD1	1:A:160:HIS:HB2	2.07	0.53
1:A:83:THR:HA	1:A:123:TRP:CZ2	2.43	0.53
1:A:159:VAL:HG21	1:A:187:VAL:HG21	1.91	0.52
1:A:282:LEU:HD13	1:A:282:LEU:H	1.75	0.52
1:A:280:VAL:HG22	1:A:282:LEU:HD12	1.91	0.52
1:B:695:GLN:HE22	1:B:745:ARG:HB2	1.74	0.52
1:B:721:TRP:HA	1:B:729:LEU:O	2.10	0.52
1:B:565:PHE:CZ	1:B:590:ALA:HB2	2.44	0.52
1:A:147:LEU:O	1:A:151:VAL:HG23	2.10	0.51
1:A:154:VAL:O	1:A:154:VAL:HG23	2.10	0.51
1:A:121:PHE:HD2	1:A:123:TRP:CE2	2.29	0.51
1:B:583:THR:HA	1:B:623:TRP:CZ2	2.45	0.51
1:B:717:LEU:CD2	1:B:755:THR:HG23	2.42	0.50

*Continued on next page...*

*Continued from previous page...*

Atom-1	Atom-2	Interatomic distance (Å)	Clash overlap (Å)
1:A:219:GLU:HG2	1:A:231:VAL:CG2	2.40	0.50
1:B:669:SER:OG	1:B:670:PRO:HD2	2.12	0.50
1:B:642:ASP:OD1	1:B:645:ARG:NH2	2.45	0.50
1:A:164:PRO:O	1:A:166:GLY:N	2.45	0.49
1:A:59:ARG:O	1:A:63:GLN:HG3	2.12	0.49
1:A:109:GLU:HA	1:A:112:ARG:HH11	1.77	0.49
1:B:717:LEU:HD23	1:B:755:THR:HG23	1.94	0.49
1:B:646:GLN:HG2	1:B:650:ARG:HD2	1.95	0.49
1:A:75:LEU:HD23	1:A:76:ILE:N	2.28	0.48
1:B:559:ARG:HG2	1:B:563:GLN:NE2	2.21	0.48
1:B:687:VAL:HG12	1:B:687:VAL:O	2.12	0.48
1:B:607:ARG:CZ	1:B:656:PRO:HB3	2.44	0.48
1:A:222:TYR:CB	1:A:267:ASP:HB3	2.43	0.48
1:B:537:ARG:O	1:B:541:ALA:HB3	2.13	0.48
1:A:229:LEU:H	1:A:229:LEU:CD2	2.22	0.48
1:B:716:ALA:HB1	1:B:769:VAL:HG12	1.96	0.48
1:A:153:ARG:NH2	1:A:172:PRO:CD	2.74	0.47
1:B:729:LEU:HD12	1:B:729:LEU:H	1.79	0.47
1:A:201:ILE:HA	1:A:204:LEU:HD12	1.95	0.47
1:B:720:SER:HA	1:B:731:VAL:O	2.14	0.47
1:B:577:ASP:OD2	1:B:586:GLN:NE2	2.45	0.47
1:B:715:GLY:HA3	1:B:773:PHE:CE2	2.50	0.47
1:B:553:VAL:HG13	1:B:756:TYR:CE2	2.50	0.47
1:A:199:ASP:O	1:A:203:THR:HG23	2.15	0.47
1:A:237:GLU:CG	1:B:559:ARG:NH1	2.74	0.47
1:A:222:TYR:HB2	1:A:267:ASP:HB3	1.96	0.47
1:A:113:TRP:HH2	1:A:147:LEU:HD23	1.80	0.46
1:B:588:LEU:O	1:B:591:CYS:HB3	2.15	0.46
1:A:247:GLY:O	1:A:280:VAL:HG12	2.14	0.46
1:A:96:ASP:OD2	1:A:153:ARG:NH2	2.48	0.46
1:B:523:VAL:HG11	1:B:687:VAL:HG13	1.97	0.46
1:A:188:SER:CB	1:A:193:SER:HB2	2.27	0.46
1:A:107:ARG:NH1	1:A:156:PRO:HB3	2.30	0.46
1:A:112:ARG:HG3	1:A:112:ARG:HH11	1.81	0.46
1:A:35:TYR:OH	3:A:3003:IDI:HC31	2.16	0.46
1:B:695:GLN:NE2	1:B:745:ARG:HD2	2.30	0.46
1:A:53:VAL:HG11	3:A:3003:IDI:I	2.85	0.46
1:A:210:HIS:CE1	1:A:278:GLN:HG3	2.50	0.45
1:B:538:ASN:HB3	1:B:766:VAL:HG11	1.98	0.45
1:B:719:GLU:HG2	1:B:731:VAL:CG2	2.47	0.45
1:B:559:ARG:O	1:B:563:GLN:HG3	2.17	0.45

*Continued on next page...*

*Continued from previous page...*

Atom-1	Atom-2	Interatomic distance (Å)	Clash overlap (Å)
1:A:53:VAL:HG23	1:A:262:LEU:HD13	1.99	0.45
1:B:659:VAL:HG11	1:B:697:ALA:HB1	1.95	0.45
1:A:112:ARG:HG3	1:A:112:ARG:NH1	2.32	0.44
1:A:53:VAL:CG2	1:A:262:LEU:HD13	2.48	0.44
1:B:601:ASP:O	1:B:656:PRO:HA	2.18	0.44
1:B:717:LEU:HD13	1:B:773:PHE:CD2	2.49	0.44
1:B:517:ALA:HB3	1:B:518:PRO:HD3	1.99	0.44
1:B:557:LYS:HD2	1:B:585:TYR:HE1	1.82	0.44
1:B:576:ILE:HB	1:B:678:LEU:HD23	1.99	0.44
1:B:688:SER:HA	1:B:689:PRO:HD3	1.79	0.44
1:A:174:PRO:HG2	1:A:206:ARG:HB2	2.00	0.44
1:B:763:GLN:HE21	1:B:763:GLN:HA	1.83	0.43
1:B:578:ILE:HB	1:B:680:SER:HB2	2.00	0.43
1:B:695:GLN:HE22	1:B:742:ALA:HA	1.77	0.43
1:A:215:GLY:O	1:A:272:VAL:HG13	2.18	0.43
1:B:659:VAL:HG11	1:B:684:LEU:CD2	2.48	0.43
1:B:688:SER:HB2	1:B:693:SER:CB	2.49	0.43
1:A:237:GLU:HG2	1:B:559:ARG:NH1	2.34	0.43
1:A:237:GLU:OE1	1:B:754:ARG:HD3	2.19	0.43
1:A:113:TRP:CZ3	1:A:147:LEU:HD23	2.53	0.43
1:A:236:GLU:OE2	1:A:255:THR:HG22	2.19	0.43
1:A:191:LEU:HD22	1:A:238:GLU:OE1	2.18	0.43
1:A:164:PRO:O	1:A:165:LEU:C	2.58	0.43
1:A:169:SER:HA	1:A:170:PRO:HD3	1.86	0.43
3:A:3003:IDI:C1	4:A:1052:HOH:O	2.66	0.42
1:B:587:LEU:O	1:B:591:CYS:HB2	2.19	0.42
1:B:565:PHE:CZ	1:B:590:ALA:CB	3.02	0.42
1:A:78:ILE:HG23	1:A:157:ILE:HD13	2.01	0.42
1:A:55:PRO:O	1:A:59:ARG:HB2	2.20	0.42
1:A:108:GLN:C	1:A:112:ARG:HH12	2.22	0.41
1:A:83:THR:HA	1:A:123:TRP:HZ2	1.84	0.41
1:A:184:LEU:N	1:A:184:LEU:HD23	2.35	0.41
1:B:723:LEU:HD23	1:B:728:ARG:HA	2.01	0.41
1:B:719:GLU:HG2	1:B:731:VAL:HG21	2.02	0.41
1:A:129:HIS:O	1:A:133:ILE:HG13	2.21	0.41
1:A:220:SER:C	1:A:231:VAL:HG22	2.41	0.41
1:A:282:LEU:HD13	1:A:282:LEU:N	2.34	0.41
1:B:671:ALA:O	1:B:673:LEU:HD22	2.19	0.41
1:B:659:VAL:HG13	1:B:697:ALA:HB1	2.00	0.41
1:A:157:ILE:HA	1:A:165:LEU:CB	2.50	0.41
1:A:104:GLU:HB2	1:A:107:ARG:NH2	2.36	0.41

*Continued on next page...*

Continued from previous page...

Atom-1	Atom-2	Interatomic distance (Å)	Clash overlap (Å)
1:A:205:LEU:O	1:A:279:LYS:HD3	2.21	0.41
1:A:282:LEU:HD22	1:A:282:LEU:C	2.41	0.41
1:B:527:TYR:CZ	1:B:729:LEU:HD22	2.56	0.41
1:A:254:ARG:HG2	1:B:740:ARG:HH22	1.84	0.40
1:A:114:LEU:N	1:A:114:LEU:HD22	2.35	0.40
1:A:229:LEU:N	1:A:229:LEU:CD2	2.84	0.40
1:B:695:GLN:HE21	1:B:742:ALA:HA	1.80	0.40
1:A:56:TRP:CE2	1:A:256:TYR:HB2	2.56	0.40
2:B:2003:SAH:HG1	2:B:2003:SAH:H4'	1.86	0.40
1:B:685:GLU:HG3	1:B:694:PHE:HE1	1.86	0.40
1:A:139:CYS:SG	1:A:142:ASP:CG	3.00	0.40

There are no symmetry-related clashes.

## 5.3 Torsion angles [i](#)

### 5.3.1 Protein backbone [i](#)

In the following table, the Percentiles column shows the percent Ramachandran outliers of the chain as a percentile score with respect to all X-ray entries followed by that with respect to entries of similar resolution.

The Analysed column shows the number of residues for which the backbone conformation was analysed, and the total number of residues.

Mol	Chain	Analysed	Favoured	Allowed	Outliers	Percentiles	
1	A	259/282 (92%)	244 (94%)	11 (4%)	4 (2%)	12	30
1	B	265/282 (94%)	246 (93%)	17 (6%)	2 (1%)	22	49
All	All	524/564 (93%)	490 (94%)	28 (5%)	6 (1%)	17	40

All (6) Ramachandran outliers are listed below:

Mol	Chain	Res	Type
1	A	49	ASN
1	A	165	LEU
1	A	101	ASP
1	B	653	ARG
1	B	765	GLY
1	A	164	PRO

### 5.3.2 Protein sidechains ⓘ

In the following table, the Percentiles column shows the percent sidechain outliers of the chain as a percentile score with respect to all X-ray entries followed by that with respect to entries of similar resolution.

The Analysed column shows the number of residues for which the sidechain conformation was analysed, and the total number of residues.

Mol	Chain	Analysed	Rotameric	Outliers	Percentiles	
1	A	205/226 (91%)	189 (92%)	16 (8%)	15	33
1	B	215/226 (95%)	194 (90%)	21 (10%)	9	21
All	All	420/452 (93%)	383 (91%)	37 (9%)	12	27

All (37) residues with a non-rotameric sidechain are listed below:

Mol	Chain	Res	Type
1	A	53	VAL
1	A	74	THR
1	A	86	GLN
1	A	88	LEU
1	A	109	GLU
1	A	150	ARG
1	A	153	ARG
1	A	185	GLU
1	A	195	GLN
1	A	213	LEU
1	A	217	LEU
1	A	229	LEU
1	A	237	GLU
1	A	255	THR
1	A	269	VAL
1	A	282	LEU
1	B	533	ARG
1	B	553	VAL
1	B	555	PRO
1	B	584	VAL
1	B	586	GLN
1	B	588	LEU
1	B	604	GLU
1	B	614	LEU
1	B	628	GLN
1	B	632	LEU
1	B	641	GLN

*Continued on next page...*

*Continued from previous page...*

Mol	Chain	Res	Type
1	B	653	ARG
1	B	665	LEU
1	B	685	GLU
1	B	703	THR
1	B	717	LEU
1	B	718	GLU
1	B	726	GLU
1	B	736	GLU
1	B	763	GLN
1	B	769	VAL

Some sidechains can be flipped to improve hydrogen bonding and reduce clashes. All (5) such sidechains are listed below:

Mol	Chain	Res	Type
1	A	195	GLN
1	B	563	GLN
1	B	646	GLN
1	B	695	GLN
1	B	763	GLN

### 5.3.3 RNA [i](#)

There are no RNA molecules in this entry.

## 5.4 Non-standard residues in protein, DNA, RNA chains [i](#)

There are no non-standard protein/DNA/RNA residues in this entry.

## 5.5 Carbohydrates [i](#)

There are no carbohydrates in this entry.

## 5.6 Ligand geometry [i](#)

4 ligands are modelled in this entry.

In the following table, the Counts columns list the number of bonds (or angles) for which Mogul statistics could be retrieved, the number of bonds (or angles) that are observed in the model and the number of bonds (or angles) that are defined in the chemical component dictionary. The Link

column lists molecule types, if any, to which the group is linked. The Z score for a bond length (or angle) is the number of standard deviations the observed value is removed from the expected value. A bond length (or angle) with  $|Z| > 2$  is considered an outlier worth inspection. RMSZ is the root-mean-square of all Z scores of the bond lengths (or angles).

Mol	Type	Chain	Res	Link	Bond lengths			Bond angles		
					Counts	RMSZ	# Z  > 2	Counts	RMSZ	# Z  > 2
2	SAH	A	2002	-	20,28,28	0.79	1 (5%)	20,40,40	1.07	1 (5%)
3	IDI	A	3003	-	12,12,12	1.09	1 (8%)	15,16,16	0.97	0
2	SAH	B	2003	-	20,28,28	0.69	1 (5%)	20,40,40	1.11	1 (5%)
3	IDI	B	3002	-	12,12,12	1.30	2 (16%)	15,16,16	1.04	0

In the following table, the Chirals column lists the number of chiral outliers, the number of chiral centers analysed, the number of these observed in the model and the number defined in the chemical component dictionary. Similar counts are reported in the Torsion and Rings columns. '-' means no outliers of that kind were identified.

Mol	Type	Chain	Res	Link	Chirals	Torsions	Rings
2	SAH	A	2002	-	-	0/7/31/31	0/3/3/3
3	IDI	A	3003	-	-	0/0/7/7	0/2/2/2
2	SAH	B	2003	-	-	0/7/31/31	0/3/3/3
3	IDI	B	3002	-	-	0/0/7/7	0/2/2/2

All (5) bond length outliers are listed below:

Mol	Chain	Res	Type	Atoms	Z	Observed(Å)	Ideal(Å)
3	A	3003	IDI	C6-I	-3.42	2.01	2.10
3	B	3002	IDI	C6-I	-3.39	2.01	2.10
2	B	2003	SAH	C2-N3	2.13	1.35	1.32
2	A	2002	SAH	C2-N3	2.37	1.36	1.32
3	B	3002	IDI	C1-N1	2.62	1.49	1.46

All (2) bond angle outliers are listed below:

Mol	Chain	Res	Type	Atoms	Z	Observed(°)	Ideal(°)
2	A	2002	SAH	C4-C5-N7	3.62	112.91	109.41
2	B	2003	SAH	C4-C5-N7	3.65	112.94	109.41

There are no chirality outliers.

There are no torsion outliers.

There are no ring outliers.

3 monomers are involved in 11 short contacts:

Mol	Chain	Res	Type	Clashes	Symm-Clashes
3	A	3003	IDI	7	0
2	B	2003	SAH	1	0
3	B	3002	IDI	3	0

## 5.7 Other polymers [i](#)

There are no such residues in this entry.

## 5.8 Polymer linkage issues [i](#)

There are no chain breaks in this entry.

## 6 Fit of model and data [i](#)

### 6.1 Protein, DNA and RNA chains [i](#)

In the following table, the column labelled ‘#RSRZ > 2’ contains the number (and percentage) of RSRZ outliers, followed by percent RSRZ outliers for the chain as percentile scores relative to all X-ray entries and entries of similar resolution. The OWAB column contains the minimum, median, 95<sup>th</sup> percentile and maximum values of the occupancy-weighted average B-factor per residue. The column labelled ‘Q < 0.9’ lists the number of (and percentage) of residues with an average occupancy less than 0.9.

Mol	Chain	Analysed	<RSRZ>	#RSRZ>2	OWAB(Å <sup>2</sup> )	Q<0.9
1	A	261/282 (92%)	-0.16	6 (2%) 61 61	27, 48, 77, 97	0
1	B	267/282 (94%)	-0.29	4 (1%) 74 75	23, 42, 64, 86	0
All	All	528/564 (93%)	-0.23	10 (1%) 67 68	23, 44, 69, 97	0

All (10) RSRZ outliers are listed below:

Mol	Chain	Res	Type	RSRZ
1	A	282	LEU	9.4
1	A	281	GLY	5.4
1	A	23	VAL	4.2
1	A	24	ALA	3.7
1	B	514	PRO	3.6
1	A	167	ALA	3.5
1	B	727	ALA	3.1
1	B	667	ALA	2.5
1	A	22	ALA	2.1
1	B	761	HIS	2.0

### 6.2 Non-standard residues in protein, DNA, RNA chains [i](#)

There are no non-standard protein/DNA/RNA residues in this entry.

### 6.3 Carbohydrates [i](#)

There are no carbohydrates in this entry.

## 6.4 Ligands [i](#)

In the following table, the Atoms column lists the number of modelled atoms in the group and the number defined in the chemical component dictionary. LLDF column lists the quality of electron density of the group with respect to its neighbouring residues in protein, DNA or RNA chains. The B-factors column lists the minimum, median, 95<sup>th</sup> percentile and maximum values of B factors of atoms in the group. The column labelled 'Q< 0.9' lists the number of atoms with occupancy less than 0.9.

Mol	Type	Chain	Res	Atoms	RSCC	RSR	LLDF	B-factors(Å <sup>2</sup> )	Q<0.9
3	IDI	A	3003	11/11	0.97	0.23	3.16	73,73,77,84	0
2	SAH	A	2002	26/26	0.88	0.24	1.37	61,72,74,74	0
3	IDI	B	3002	11/11	0.96	0.18	1.28	100,101,102,107	0
2	SAH	B	2003	26/26	0.93	0.20	0.30	38,42,45,45	0

## 6.5 Other polymers [i](#)

There are no such residues in this entry.