



Full wwPDB X-ray Structure Validation Report ⓘ

Jan 16, 2018 – 11:03 AM EST

PDB ID : 3NAY
Title : PDK1 in complex with inhibitor MP6
Authors : Yan, Y.; Munshi, S.K.; Allison, T.
Deposited on : 2010-06-02
Resolution : 2.60 Å(reported)

This is a Full wwPDB X-ray Structure Validation Report for a publicly released PDB entry.

We welcome your comments at validation@mail.wwpdb.org

A user guide is available at

<http://wwpdb.org/validation/2016/XrayValidationReportHelp>

with specific help available everywhere you see the ⓘ symbol.

The following versions of software and data (see [references ⓘ](#)) were used in the production of this report:

MolProbity : 4.02b-467
Mogul : 1.7.2 (RC1), CSD as538be (2017)
Xtriage (Phenix) : 1.9-1692
EDS : rb-20030736
Percentile statistics : 20161228.v01 (using entries in the PDB archive December 28th 2016)
Refmac : 5.8.0135
CCP4 : 6.5.0
Ideal geometry (proteins) : Engh & Huber (2001)
Ideal geometry (DNA, RNA) : Parkinson et al. (1996)
Validation Pipeline (wwPDB-VP) : rb-20030736

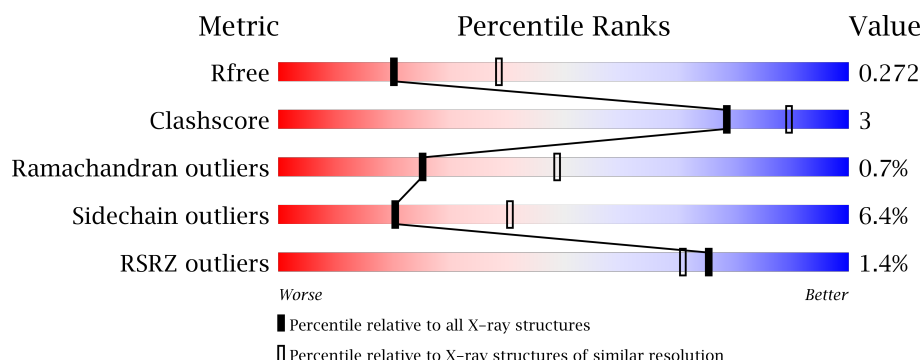
1 Overall quality at a glance

The following experimental techniques were used to determine the structure:

X-RAY DIFFRACTION

The reported resolution of this entry is 2.60 Å.

Percentile scores (ranging between 0-100) for global validation metrics of the entry are shown in the following graphic. The table shows the number of entries on which the scores are based.



Metric	Whole archive (#Entries)	Similar resolution (#Entries, resolution range(Å))
R_{free}	100719	2542 (2.60-2.60)
Clashscore	112137	2895 (2.60-2.60)
Ramachandran outliers	110173	2848 (2.60-2.60)
Sidechain outliers	110143	2848 (2.60-2.60)
RSRZ outliers	101464	2550 (2.60-2.60)

The table below summarises the geometric issues observed across the polymeric chains and their fit to the electron density. The red, orange, yellow and green segments on the lower bar indicate the fraction of residues that contain outliers for ≥ 3 , 2, 1 and 0 types of geometric quality criteria. A grey segment represents the fraction of residues that are not modelled. The numeric value for each fraction is indicated below the corresponding segment, with a dot representing fractions $\leq 5\%$. The upper red bar (where present) indicates the fraction of residues that have poor fit to the electron density. The numeric value is given above the bar.

Mol	Chain	Length	Quality of chain
1	A	311	
1	B	311	

2 Entry composition

There are 3 unique types of molecules in this entry. The entry contains 4757 atoms, of which 0 are hydrogens and 0 are deuteriums.

In the tables below, the ZeroOcc column contains the number of atoms modelled with zero occupancy, the AltConf column contains the number of residues with at least one atom in alternate conformation and the Trace column contains the number of residues modelled with at most 2 atoms.

- Molecule 1 is a protein called 3-phosphoinositide-dependent protein kinase 1.

Mol	Chain	Residues	Atoms						ZeroOcc	AltConf	Trace
1	A	279	Total	C	N	O	P	S	0	0	0
			2278	1482	373	415	1	7			
1	B	279	Total	C	N	O	P	S	0	0	0
			2266	1475	372	411	1	7			

There are 28 discrepancies between the modelled and reference sequences:

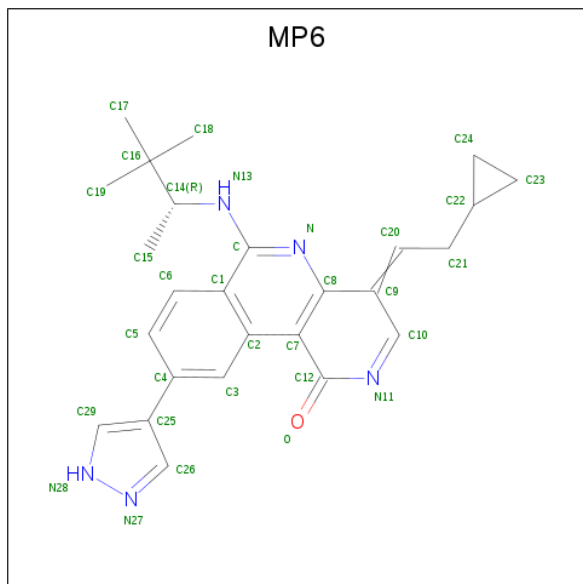
Chain	Residue	Modelled	Actual	Comment	Reference
A	52	MET	-	EXPRESSION TAG	UNP O15530
A	53	HIS	-	EXPRESSION TAG	UNP O15530
A	54	HIS	-	EXPRESSION TAG	UNP O15530
A	55	HIS	-	EXPRESSION TAG	UNP O15530
A	56	HIS	-	EXPRESSION TAG	UNP O15530
A	57	HIS	-	EXPRESSION TAG	UNP O15530
A	58	HIS	-	EXPRESSION TAG	UNP O15530
A	59	GLU	-	EXPRESSION TAG	UNP O15530
A	60	ASN	-	EXPRESSION TAG	UNP O15530
A	61	LEU	-	EXPRESSION TAG	UNP O15530
A	62	TYR	-	EXPRESSION TAG	UNP O15530
A	63	PHE	-	EXPRESSION TAG	UNP O15530
A	64	GLN	-	EXPRESSION TAG	UNP O15530
A	65	GLY	-	EXPRESSION TAG	UNP O15530
B	52	MET	-	EXPRESSION TAG	UNP O15530
B	53	HIS	-	EXPRESSION TAG	UNP O15530
B	54	HIS	-	EXPRESSION TAG	UNP O15530
B	55	HIS	-	EXPRESSION TAG	UNP O15530
B	56	HIS	-	EXPRESSION TAG	UNP O15530
B	57	HIS	-	EXPRESSION TAG	UNP O15530
B	58	HIS	-	EXPRESSION TAG	UNP O15530
B	59	GLU	-	EXPRESSION TAG	UNP O15530
B	60	ASN	-	EXPRESSION TAG	UNP O15530
B	61	LEU	-	EXPRESSION TAG	UNP O15530
B	62	TYR	-	EXPRESSION TAG	UNP O15530

Continued on next page...

Continued from previous page...

Chain	Residue	Modelled	Actual	Comment	Reference
B	63	PHE	-	EXPRESSION TAG	UNP O15530
B	64	GLN	-	EXPRESSION TAG	UNP O15530
B	65	GLY	-	EXPRESSION TAG	UNP O15530

- Molecule 2 is 4-(2-cyclopropylethylidene)-9-(1H-pyrazol-4-yl)-6-{[(1R)-1,2,2-trimethylpropyl]amino}benzo[c][1,6]naphthyridin-1(4H)-one (three-letter code: MP6) (formula: C₂₆H₂₉N₅O).



Mol	Chain	Residues	Atoms				ZeroOcc	AltConf
2	A	1	Total	C	N	O	0	0
			32	26	5	1		
2	B	1	Total	C	N	O	0	0
			32	26	5	1		

- Molecule 3 is water.

Mol	Chain	Residues	Atoms		ZeroOcc	AltConf
3	A	121	Total	O	0	0
			121	121		
3	B	28	Total	O	0	0
			28	28		

- Molecule 1: 3-phosphoinositide-dependent protein kinase 1



4 Data and refinement statistics

Property	Value	Source
Space group	P 41 21 2	Depositor
Cell constants a, b, c, α , β , γ	89.68 Å 89.68 Å 178.00 Å 90.00° 90.00° 90.00°	Depositor
Resolution (Å)	44.84 – 2.60 44.84 – 2.60	Depositor EDS
% Data completeness (in resolution range)	99.5 (44.84-2.60) 99.5 (44.84-2.60)	Depositor EDS
R_{merge}	(Not available)	Depositor
R_{sym}	0.10	Depositor
$\langle I/\sigma(I) \rangle$ ¹	2.62 (at 2.61 Å)	Xtriage
Refinement program	CNS, BUSTER 2.9.4	Depositor
R, R_{free}	0.208 , 0.274 0.210 , 0.272	Depositor DCC
R_{free} test set	1181 reflections (5.42%)	DCC
Wilson B-factor (Å ²)	47.5	Xtriage
Anisotropy	0.364	Xtriage
Bulk solvent k_{sol} (e/Å ³), B_{sol} (Å ²)	0.33 , 43.5	EDS
L-test for twinning ²	$\langle L \rangle = 0.50$, $\langle L^2 \rangle = 0.34$	Xtriage
Estimated twinning fraction	No twinning to report.	Xtriage
F_o, F_c correlation	0.94	EDS
Total number of atoms	4757	wwPDB-VP
Average B, all atoms (Å ²)	53.0	wwPDB-VP

Xtriage's analysis on translational NCS is as follows: *The analyses of the Patterson function reveals a significant off-origin peak that is 24.58 % of the origin peak, indicating pseudo translational symmetry. The chance of finding a peak of this or larger height randomly in a structure without pseudo translational symmetry is equal to 3.7344e-03. The detected translational NCS is most likely also responsible for the elevated intensity ratio.*

¹ Intensities estimated from amplitudes.

² Theoretical values of $\langle |L| \rangle$, $\langle L^2 \rangle$ for acentric reflections are 0.5, 0.333 respectively for untwinned datasets, and 0.375, 0.2 for perfectly twinned datasets.

5 Model quality

5.1 Standard geometry

Bond lengths and bond angles in the following residue types are not validated in this section: MP6, SEP

The Z score for a bond length (or angle) is the number of standard deviations the observed value is removed from the expected value. A bond length (or angle) with $|Z| > 5$ is considered an outlier worth inspection. RMSZ is the root-mean-square of all Z scores of the bond lengths (or angles).

Mol	Chain	Bond lengths		Bond angles	
		RMSZ	$\# Z > 5$	RMSZ	$\# Z > 5$
1	A	0.46	0/2322	0.72	0/3131
1	B	0.46	0/2310	0.70	0/3117
All	All	0.46	0/4632	0.71	0/6248

There are no bond length outliers.

There are no bond angle outliers.

There are no chirality outliers.

There are no planarity outliers.

5.2 Too-close contacts

In the following table, the Non-H and H(model) columns list the number of non-hydrogen atoms and hydrogen atoms in the chain respectively. The H(added) column lists the number of hydrogen atoms added and optimized by MolProbity. The Clashes column lists the number of clashes within the asymmetric unit, whereas Symm-Clashes lists symmetry related clashes.

Mol	Chain	Non-H	H(model)	H(added)	Clashes	Symm-Clashes
1	A	2278	0	2286	13	0
1	B	2266	0	2267	20	0
2	A	32	0	25	1	0
2	B	32	0	25	1	0
3	A	121	0	0	1	0
3	B	28	0	0	0	0
All	All	4757	0	4603	30	0

The all-atom clashscore is defined as the number of clashes found per 1000 atoms (including hydrogen atoms). The all-atom clashscore for this structure is 3.

All (30) close contacts within the same asymmetric unit are listed below, sorted by their clash

magnitude.

Atom-1	Atom-2	Interatomic distance (Å)	Clash overlap (Å)
1:B:78:ARG:HG2	1:B:79:PRO:HD2	1.76	0.66
1:A:257:LYS:HD3	1:B:285:GLY:HA3	1.82	0.61
1:A:203:HIS:HD2	1:A:205:ASP:H	1.51	0.58
1:B:111:LYS:HB3	1:B:157:PHE:HB2	1.84	0.58
1:B:78:ARG:HD3	1:B:80:GLU:H	1.68	0.58
1:B:284:ALA:HB3	1:B:290:ILE:HG13	1.88	0.53
1:B:188:GLU:HB3	1:B:219:ILE:HG12	1.91	0.52
2:B:2:MP6:H17A	2:B:2:MP6:H24A	1.94	0.50
1:B:184:PHE:CE2	1:B:355:PRO:HB3	2.47	0.49
1:A:240:ASN:HB2	1:A:257:LYS:O	2.13	0.49
1:B:197:HIS:HB3	1:B:261:LYS:HD3	1.95	0.48
1:A:315:LYS:HD2	1:A:325:LEU:HD22	1.94	0.48
1:A:111:LYS:HE3	2:A:1:MP6:H23A	1.96	0.47
1:A:88:LEU:HD21	1:A:98:LEU:HB2	1.97	0.47
1:B:116:ARG:HH12	1:B:120:LYS:HE2	1.80	0.46
1:B:249:VAL:HG13	1:B:253:LEU:HD23	1.97	0.46
1:A:247:GLN:HG2	3:A:392:HOH:O	2.15	0.46
1:B:245:THR:O	1:B:249:VAL:HG23	2.15	0.46
1:B:139:HIS:HB3	1:B:142:PHE:HD2	1.81	0.44
1:A:304:LYS:HD3	1:A:361:TYR:HD2	1.83	0.43
1:B:204:ARG:HH12	1:B:241:SEP:P	2.42	0.42
1:A:147:PHE:CE1	1:A:158:GLY:HA3	2.53	0.42
1:A:190:VAL:HG22	1:A:268:LEU:HD21	2.01	0.42
1:B:77:LYS:HB2	1:B:149:PHE:CD2	2.54	0.42
1:A:257:LYS:HG2	1:B:286:ASN:HD22	1.84	0.42
1:B:302:PRO:HD2	1:B:305:PHE:CD2	2.56	0.41
1:A:286:ASN:HD22	1:B:257:LYS:HG3	1.86	0.41
1:A:289:LEU:HD12	1:B:257:LYS:HD2	2.02	0.41
1:B:243:VAL:HG22	1:B:253:LEU:HG	2.02	0.40
1:B:111:LYS:HE2	1:B:113:LEU:HD21	2.04	0.40

There are no symmetry-related clashes.

5.3 Torsion angles ⓘ

5.3.1 Protein backbone ⓘ

In the following table, the Percentiles column shows the percent Ramachandran outliers of the chain as a percentile score with respect to all X-ray entries followed by that with respect to entries of similar resolution.

The Analysed column shows the number of residues for which the backbone conformation was analysed, and the total number of residues.

Mol	Chain	Analysed	Favoured	Allowed	Outliers	Percentiles	
1	A	274/311 (88%)	261 (95%)	13 (5%)	0	100	100
1	B	274/311 (88%)	253 (92%)	17 (6%)	4 (2%)	12	24
All	All	548/622 (88%)	514 (94%)	30 (6%)	4 (1%)	25	49

All (4) Ramachandran outliers are listed below:

Mol	Chain	Res	Type
1	B	242	PHE
1	B	243	VAL
1	B	257	LYS
1	B	348	GLU

5.3.2 Protein sidechains ⓘ

In the following table, the Percentiles column shows the percent sidechain outliers of the chain as a percentile score with respect to all X-ray entries followed by that with respect to entries of similar resolution.

The Analysed column shows the number of residues for which the sidechain conformation was analysed, and the total number of residues.

Mol	Chain	Analysed	Rotameric	Outliers	Percentiles	
1	A	245/274 (89%)	230 (94%)	15 (6%)	22	43
1	B	242/274 (88%)	226 (93%)	16 (7%)	19	38
All	All	487/548 (89%)	456 (94%)	31 (6%)	20	40

All (31) residues with a non-rotameric sidechain are listed below:

Mol	Chain	Res	Type
1	A	76	LYS
1	A	90	GLU
1	A	105	SER
1	A	114	GLU
1	A	120	LYS
1	A	137	LEU
1	A	145	LEU
1	A	153	GLU
1	A	155	LEU

Continued on next page...

Continued from previous page...

Mol	Chain	Res	Type
1	A	160	SER
1	A	174	ILE
1	A	199	LYS
1	A	247	GLN
1	A	253	LEU
1	A	359	THR
1	B	76	LYS
1	B	78	ARG
1	B	116	ARG
1	B	119	ILE
1	B	120	LYS
1	B	129	ARG
1	B	132	ASP
1	B	134	MET
1	B	144	LYS
1	B	155	LEU
1	B	174	ILE
1	B	191	SER
1	B	256	GLU
1	B	257	LYS
1	B	345	VAL
1	B	354	THR

Some sidechains can be flipped to improve hydrogen bonding and reduce clashes. All (5) such sidechains are listed below:

Mol	Chain	Res	Type
1	A	203	HIS
1	A	351	HIS
1	B	203	HIS
1	B	210	ASN
1	B	353	GLN

5.3.3 RNA [i](#)

There are no RNA molecules in this entry.

5.4 Non-standard residues in protein, DNA, RNA chains [i](#)

2 non-standard protein/DNA/RNA residues are modelled in this entry.

In the following table, the Counts columns list the number of bonds (or angles) for which Mogul

statistics could be retrieved, the number of bonds (or angles) that are observed in the model and the number of bonds (or angles) that are defined in the Chemical Component Dictionary. The Link column lists molecule types, if any, to which the group is linked. The Z score for a bond length (or angle) is the number of standard deviations the observed value is removed from the expected value. A bond length (or angle) with $|Z| > 2$ is considered an outlier worth inspection. RMSZ is the root-mean-square of all Z scores of the bond lengths (or angles).

Mol	Type	Chain	Res	Link	Bond lengths			Bond angles		
					Counts	RMSZ	# $ Z > 2$	Counts	RMSZ	# $ Z > 2$
1	SEP	A	241	1	9,9,10	1.67	2 (22%)	9,12,14	4.06	2 (22%)
1	SEP	B	241	1	9,9,10	1.59	2 (22%)	9,12,14	3.39	3 (33%)

In the following table, the Chirals column lists the number of chiral outliers, the number of chiral centers analysed, the number of these observed in the model and the number defined in the Chemical Component Dictionary. Similar counts are reported in the Torsion and Rings columns. '-' means no outliers of that kind were identified.

Mol	Type	Chain	Res	Link	Chirals	Torsions	Rings
1	SEP	A	241	1	-	0/5/8/10	0/0/0/0
1	SEP	B	241	1	-	0/5/8/10	0/0/0/0

All (4) bond length outliers are listed below:

Mol	Chain	Res	Type	Atoms	Z	Observed(Å)	Ideal(Å)
1	A	241	SEP	CB-CA	2.09	1.58	1.52
1	B	241	SEP	CB-CA	2.39	1.59	1.52
1	B	241	SEP	CA-C	3.62	1.55	1.50
1	A	241	SEP	CA-C	4.19	1.55	1.50

All (5) bond angle outliers are listed below:

Mol	Chain	Res	Type	Atoms	Z	Observed(°)	Ideal(°)
1	B	241	SEP	P-OG-CB	-2.45	111.55	118.30
1	A	241	SEP	P-OG-CB	-2.23	112.16	118.30
1	B	241	SEP	O3P-P-OG	2.02	112.11	106.73
1	B	241	SEP	OG-CB-CA	9.25	117.29	108.17
1	A	241	SEP	OG-CB-CA	11.49	119.49	108.17

There are no chirality outliers.

There are no torsion outliers.

There are no ring outliers.

1 monomer is involved in 1 short contact:

Mol	Chain	Res	Type	Clashes	Symm-Clashes
1	B	241	SEP	1	0

5.5 Carbohydrates [i](#)

There are no carbohydrates in this entry.

5.6 Ligand geometry [i](#)

2 ligands are modelled in this entry.

In the following table, the Counts columns list the number of bonds (or angles) for which Mogul statistics could be retrieved, the number of bonds (or angles) that are observed in the model and the number of bonds (or angles) that are defined in the Chemical Component Dictionary. The Link column lists molecule types, if any, to which the group is linked. The Z score for a bond length (or angle) is the number of standard deviations the observed value is removed from the expected value. A bond length (or angle) with $|Z| > 2$ is considered an outlier worth inspection. RMSZ is the root-mean-square of all Z scores of the bond lengths (or angles).

Mol	Type	Chain	Res	Link	Bond lengths			Bond angles		
					Counts	RMSZ	# Z > 2	Counts	RMSZ	# Z > 2
2	MP6	A	1	-	32,36,36	3.06	11 (34%)	39,54,54	1.89	9 (23%)
2	MP6	B	2	-	32,36,36	3.10	5 (15%)	39,54,54	1.69	5 (12%)

In the following table, the Chirals column lists the number of chiral outliers, the number of chiral centers analysed, the number of these observed in the model and the number defined in the Chemical Component Dictionary. Similar counts are reported in the Torsion and Rings columns. '-' means no outliers of that kind were identified.

Mol	Type	Chain	Res	Link	Chirals	Torsions	Rings
2	MP6	A	1	-	-	0/19/34/34	0/3/5/5
2	MP6	B	2	-	-	1/19/34/34	0/3/5/5

All (16) bond length outliers are listed below:

Mol	Chain	Res	Type	Atoms	Z	Observed(Å)	Ideal(Å)
2	B	2	MP6	C21-C20	-14.91	1.20	1.50
2	A	1	MP6	C21-C20	-13.52	1.23	1.50
2	A	1	MP6	C25-C4	-2.83	1.41	1.49
2	A	1	MP6	O-C12	-2.01	1.20	1.23
2	B	2	MP6	C-N13	2.21	1.39	1.35
2	A	1	MP6	C6-C5	2.26	1.41	1.36
2	B	2	MP6	C20-C9	2.35	1.42	1.34

Continued on next page...

Continued from previous page...

Mol	Chain	Res	Type	Atoms	Z	Observed(Å)	Ideal(Å)
2	A	1	MP6	C7-C12	2.60	1.50	1.47
2	A	1	MP6	C2-C1	2.70	1.48	1.43
2	A	1	MP6	C8-N	2.74	1.39	1.34
2	A	1	MP6	C20-C9	2.81	1.43	1.34
2	B	2	MP6	C10-N11	3.40	1.38	1.32
2	A	1	MP6	C10-N11	4.01	1.39	1.32
2	A	1	MP6	C-N	4.38	1.39	1.33
2	A	1	MP6	C-N13	4.54	1.43	1.35
2	B	2	MP6	C7-C12	5.22	1.54	1.47

All (14) bond angle outliers are listed below:

Mol	Chain	Res	Type	Atoms	Z	Observed(°)	Ideal(°)
2	A	1	MP6	C26-C25-C4	-5.94	119.59	127.71
2	B	2	MP6	C9-C10-N11	-3.30	121.08	125.42
2	A	1	MP6	C6-C1-C	-2.45	120.72	124.00
2	A	1	MP6	C9-C10-N11	-2.31	122.38	125.42
2	B	2	MP6	C26-C25-C4	-2.26	124.62	127.71
2	A	1	MP6	C-N13-C14	-2.23	120.33	124.10
2	A	1	MP6	C5-C4-C3	2.13	121.40	118.19
2	A	1	MP6	C1-C-N13	2.27	122.96	120.57
2	B	2	MP6	C29-C25-C4	2.87	131.64	127.71
2	A	1	MP6	C10-N11-C12	3.16	123.05	116.52
2	B	2	MP6	C10-N11-C12	4.26	125.33	116.52
2	A	1	MP6	C2-C7-C12	4.68	125.21	121.07
2	A	1	MP6	C29-C25-C4	4.80	134.27	127.71
2	B	2	MP6	C2-C7-C12	6.29	126.62	121.07

There are no chirality outliers.

All (1) torsion outliers are listed below:

Mol	Chain	Res	Type	Atoms
2	B	2	MP6	C21-C20-C9-C8

There are no ring outliers.

2 monomers are involved in 2 short contacts:

Mol	Chain	Res	Type	Clashes	Symm-Clashes
2	A	1	MP6	1	0
2	B	2	MP6	1	0

5.7 Other polymers

There are no such residues in this entry.

5.8 Polymer linkage issues

There are no chain breaks in this entry.

6 Fit of model and data [i](#)

6.1 Protein, DNA and RNA chains [i](#)

In the following table, the column labelled ‘#RSRZ> 2’ contains the number (and percentage) of RSRZ outliers, followed by percent RSRZ outliers for the chain as percentile scores relative to all X-ray entries and entries of similar resolution. The OWAB column contains the minimum, median, 95th percentile and maximum values of the occupancy-weighted average B-factor per residue. The column labelled ‘Q< 0.9’ lists the number of (and percentage) of residues with an average occupancy less than 0.9.

Mol	Chain	Analysed	<RSRZ>	#RSRZ>2	OWAB(Å ²)	Q<0.9
1	A	278/311 (89%)	-0.22	1 (0%) 92 91	24, 38, 60, 92	0
1	B	278/311 (89%)	0.26	7 (2%) 58 50	43, 64, 90, 101	0
All	All	556/622 (89%)	0.02	8 (1%) 75 71	24, 52, 84, 101	0

All (8) RSRZ outliers are listed below:

Mol	Chain	Res	Type	RSRZ
1	B	333	TYR	3.0
1	B	84	PHE	2.6
1	B	240	ASN	2.5
1	B	328	GLU	2.5
1	B	80	GLU	2.5
1	B	105	SER	2.5
1	A	258	SER	2.2
1	B	106	ARG	2.2

6.2 Non-standard residues in protein, DNA, RNA chains [i](#)

In the following table, the Atoms column lists the number of modelled atoms in the group and the number defined in the chemical component dictionary. LLDF column lists the quality of electron density of the group with respect to its neighbouring residues in protein, DNA or RNA chains. The B-factors column lists the minimum, median, 95th percentile and maximum values of B factors of atoms in the group. The column labelled ‘Q< 0.9’ lists the number of atoms with occupancy less than 0.9.

Mol	Type	Chain	Res	Atoms	RSCC	RSR	LLDF	B-factors(Å ²)	Q<0.9
1	SEP	B	241	10/11	0.83	0.21	-	86,88,91,92	0
1	SEP	A	241	10/11	0.83	0.19	-	82,83,88,88	0

6.3 Carbohydrates [i](#)

There are no carbohydrates in this entry.

6.4 Ligands [i](#)

In the following table, the Atoms column lists the number of modelled atoms in the group and the number defined in the chemical component dictionary. LLDF column lists the quality of electron density of the group with respect to its neighbouring residues in protein, DNA or RNA chains. The B-factors column lists the minimum, median, 95th percentile and maximum values of B factors of atoms in the group. The column labelled 'Q< 0.9' lists the number of atoms with occupancy less than 0.9.

Mol	Type	Chain	Res	Atoms	RSCC	RSR	LLDF	B-factors(\AA^2)	Q<0.9
2	MP6	B	2	32/32	0.94	0.20	0.67	41,58,67,67	0
2	MP6	A	1	32/32	0.98	0.16	-0.19	22,27,32,32	0

6.5 Other polymers [i](#)

There are no such residues in this entry.