



# Full wwPDB X-ray Structure Validation Report ⓘ

Oct 2, 2017 – 09:11 AM EDT

PDB ID : 1NBH  
Title : Structure of glycine N-methyltransferase complexed with S-adenosylmethionine and acetate, GNMT:SAM:Ac  
Authors : Takata, Y.; Takusagawa, F.  
Deposited on : unknown  
Resolution : 2.80 Å(reported)

This is a Full wwPDB X-ray Structure Validation Report for a publicly released PDB entry.

We welcome your comments at [validation@mail.wwpdb.org](mailto:validation@mail.wwpdb.org)

A user guide is available at

<http://wwpdb.org/validation/2016/XrayValidationReportHelp>

with specific help available everywhere you see the ⓘ symbol.

---

The following versions of software and data (see [references ⓘ](#)) were used in the production of this report:

MolProbity : 4.02b-467  
Mogul : 1.7.2 (RC1), CSD as538be (2017)  
Xtriage (Phenix) : **NOT EXECUTED**  
EDS : **NOT EXECUTED**  
Percentile statistics : 20161228.v01 (using entries in the PDB archive December 28th 2016)  
Ideal geometry (proteins) : Engh & Huber (2001)  
Ideal geometry (DNA, RNA) : Parkinson et al. (1996)  
Validation Pipeline (wwPDB-VP) : rb-20030345

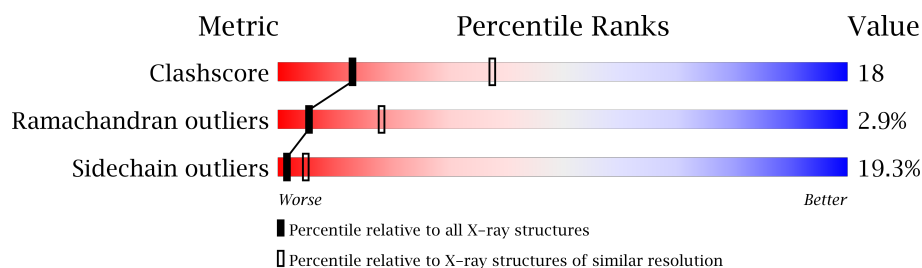
# 1 Overall quality at a glance

The following experimental techniques were used to determine the structure:

## *X-RAY DIFFRACTION*

The reported resolution of this entry is 2.80 Å.

Percentile scores (ranging between 0-100) for global validation metrics of the entry are shown in the following graphic. The table shows the number of entries on which the scores are based.



Metric	Whole archive (#Entries)	Similar resolution (#Entries, resolution range(Å))
Clashscore	112137	3033 (2.80-2.80)
Ramachandran outliers	110173	2983 (2.80-2.80)
Sidechain outliers	110143	2985 (2.80-2.80)

The table below summarises the geometric issues observed across the polymeric chains and their fit to the electron density. The red, orange, yellow and green segments on the lower bar indicate the fraction of residues that contain outliers for  $\geq 3$ , 2, 1 and 0 types of geometric quality criteria. A grey segment represents the fraction of residues that are not modelled. The numeric value for each fraction is indicated below the corresponding segment, with a dot representing fractions  $\leq 5\%$ . The upper red bar (where present) indicates the fraction of residues that have poor fit to the electron density. The numeric value is given above the bar.

Note EDS was not executed.

Mol	Chain	Length	Quality of chain
1	A	292	
1	B	292	
1	C	292	
1	D	292	

## 2 Entry composition [i](#)

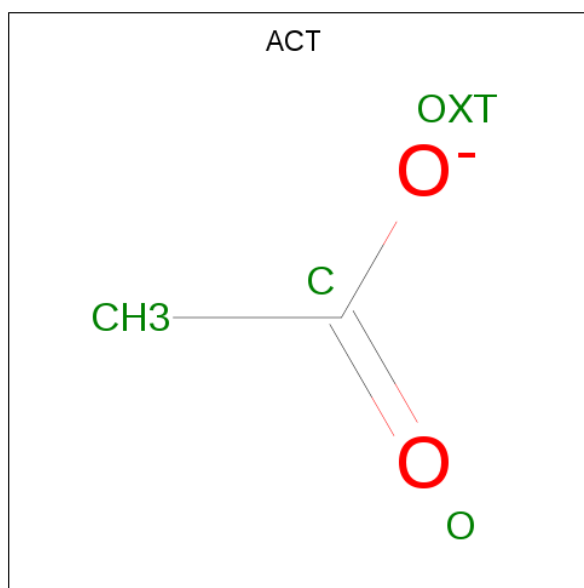
There are 4 unique types of molecules in this entry. The entry contains 9553 atoms, of which 0 are hydrogens and 0 are deuteriums.

In the tables below, the ZeroOcc column contains the number of atoms modelled with zero occupancy, the AltConf column contains the number of residues with at least one atom in alternate conformation and the Trace column contains the number of residues modelled with at most 2 atoms.

- Molecule 1 is a protein called Glycine N-methyltransferase.

Mol	Chain	Residues	Atoms					ZeroOcc	AltConf	Trace
1	A	292	Total	C	N	O	S	125	0	0
			2285	1450	399	425	11			
1	B	292	Total	C	N	O	S	125	0	0
			2285	1450	399	425	11			
1	C	292	Total	C	N	O	S	125	0	0
			2285	1450	399	425	11			
1	D	292	Total	C	N	O	S	125	0	0
			2285	1450	399	425	11			

- Molecule 2 is ACETATE ION (three-letter code: ACT) (formula: C<sub>2</sub>H<sub>3</sub>O<sub>2</sub>).



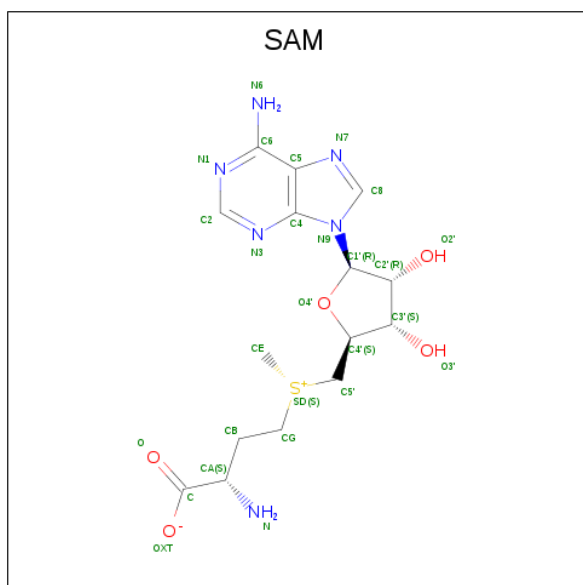
Mol	Chain	Residues	Atoms			ZeroOcc	AltConf
2	A	1	Total	C	O	0	0
			4	2	2		
2	B	1	Total	C	O	0	0
			4	2	2		

*Continued on next page...*

*Continued from previous page...*

Mol	Chain	Residues	Atoms			ZeroOcc	AltConf
2	C	1	Total	C	O	0	0
			4	2	2		
2	D	1	Total	C	O	0	0
			4	2	2		

- Molecule 3 is S-ADENOSYLMETHIONINE (three-letter code: SAM) (formula:  $C_{15}H_{22}N_6O_5S$ ).



Mol	Chain	Residues	Atoms					ZeroOcc	AltConf
3	A	1	Total	C	N	O	S	0	0
			27	15	6	5	1		
3	B	1	Total	C	N	O	S	0	0
			27	15	6	5	1		
3	C	1	Total	C	N	O	S	0	0
			27	15	6	5	1		
3	D	1	Total	C	N	O	S	0	0
			27	15	6	5	1		

- Molecule 4 is water.

Mol	Chain	Residues	Atoms		ZeroOcc	AltConf
4	A	84	Total	O	0	0
			84	84		
4	B	72	Total	O	0	0
			72	72		
4	C	74	Total	O	0	0
			74	74		

*Continued on next page...*

*Continued from previous page...*

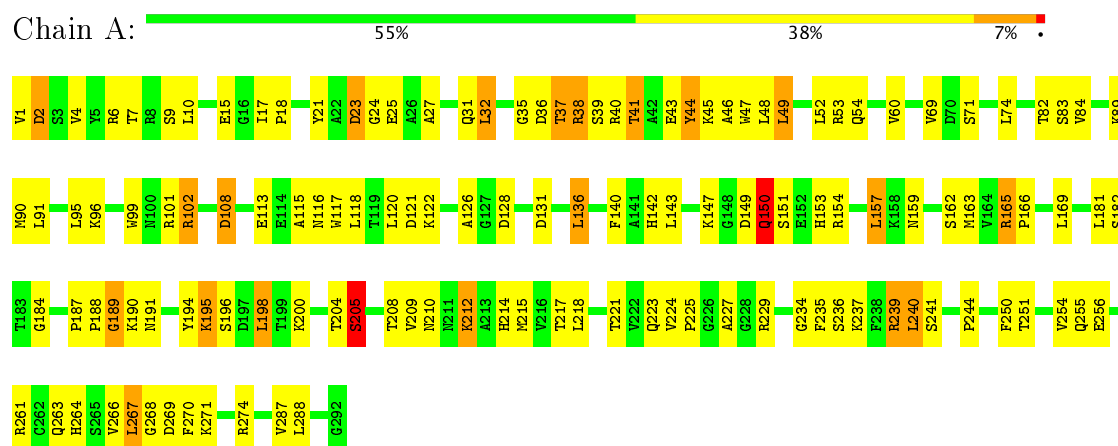
Mol	Chain	Residues	Atoms		ZeroOcc	AltConf
4	D	59	Total	O	0	0
			59	59		

### 3 Residue-property plots

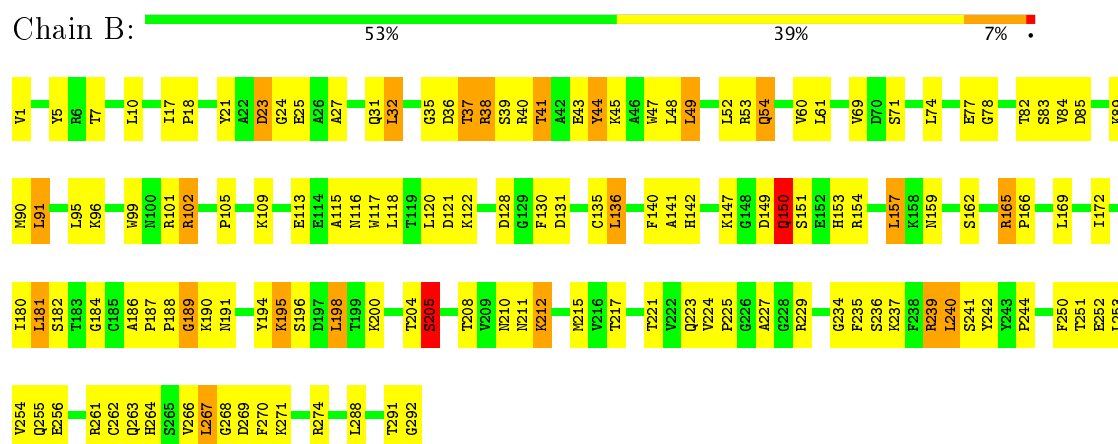
These plots are drawn for all protein, RNA and DNA chains in the entry. The first graphic for a chain summarises the proportions of the various outlier classes displayed in the second graphic. The second graphic shows the sequence view annotated by issues in geometry and electron density. Residues are color-coded according to the number of geometric quality criteria for which they contain at least one outlier: green = 0, yellow = 1, orange = 2 and red = 3 or more. A red dot above a residue indicates a poor fit to the electron density ( $RSRZ > 2$ ). Stretches of 2 or more consecutive residues without any outlier are shown as a green connector. Residues present in the sample, but not in the model, are shown in grey.

Note EDS was not executed.

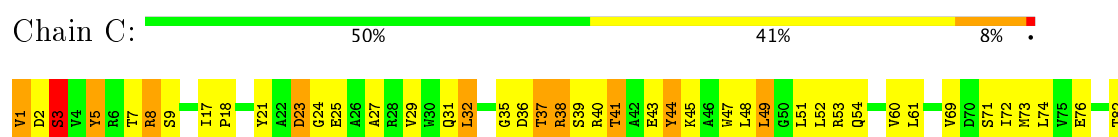
#### • Molecule 1: Glycine N-methyltransferase

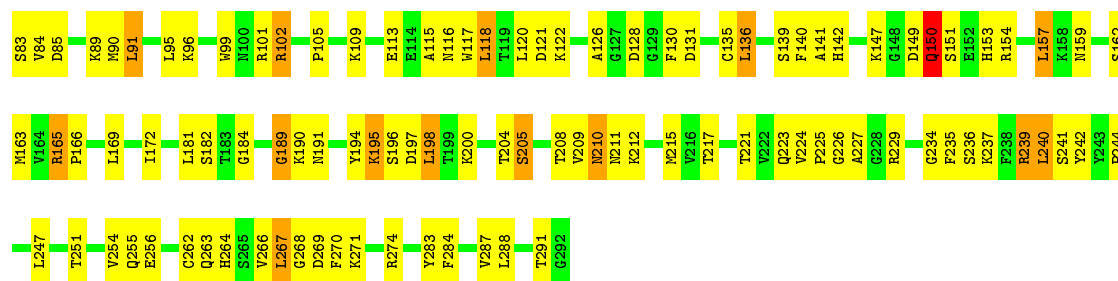


#### • Molecule 1: Glycine N-methyltransferase



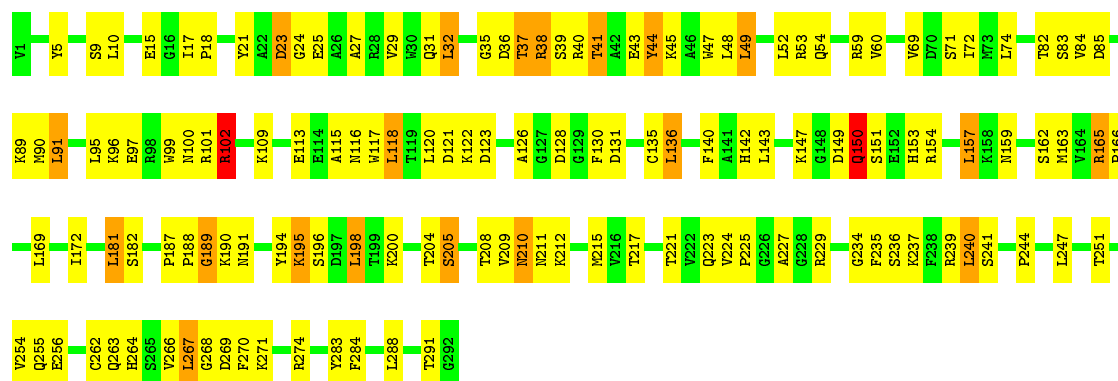
#### • Molecule 1: Glycine N-methyltransferase





• Molecule 1: Glycine N-methyltransferase

Chain D: 53% 39% 7% •



## 4 Data and refinement statistics

Xtriage (Phenix) and EDS were not executed - this section is therefore incomplete.

Property	Value	Source
Space group	P 21 21 21	Depositor
Cell constants a, b, c, $\alpha$ , $\beta$ , $\gamma$	90.05Å 117.01Å 137.78Å 90.00° 90.00° 90.00°	Depositor
Resolution (Å)	10.00 – 2.80	Depositor
% Data completeness (in resolution range)	(Not available) (10.00-2.80)	Depositor
$R_{merge}$	0.07	Depositor
$R_{sym}$	0.07	Depositor
Refinement program	X-PLOR 3.851	Depositor
R, $R_{free}$	0.203 , 0.278	Depositor
Estimated twinning fraction	No twinning to report.	Xtriage
Total number of atoms	9553	wwPDB-VP
Average B, all atoms (Å <sup>2</sup> )	23.0	wwPDB-VP



## 5 Model quality

### 5.1 Standard geometry

Bond lengths and bond angles in the following residue types are not validated in this section: SAM, ACT

The Z score for a bond length (or angle) is the number of standard deviations the observed value is removed from the expected value. A bond length (or angle) with  $|Z| > 5$  is considered an outlier worth inspection. RMSZ is the root-mean-square of all Z scores of the bond lengths (or angles).

Mol	Chain	Bond lengths		Bond angles	
		RMSZ	$\# Z  > 5$	RMSZ	$\# Z  > 5$
1	A	0.54	3/2341 (0.1%)	0.68	4/3174 (0.1%)
1	B	0.46	2/2341 (0.1%)	0.68	4/3174 (0.1%)
1	C	0.53	1/2341 (0.0%)	0.68	5/3174 (0.2%)
1	D	0.46	1/2341 (0.0%)	0.69	6/3174 (0.2%)
All	All	0.50	7/9364 (0.1%)	0.68	19/12696 (0.1%)

All (7) bond length outliers are listed below:

Mol	Chain	Res	Type	Atoms	Z	Observed(Å)	Ideal(Å)
1	C	17	ILE	C-N	19.96	1.72	1.34
1	A	17	ILE	C-N	18.68	1.69	1.34
1	D	17	ILE	C-N	16.16	1.65	1.34
1	B	17	ILE	C-N	14.69	1.62	1.34
1	B	184	GLY	C-O	5.73	1.32	1.23
1	A	108	ASP	C-O	5.72	1.34	1.23
1	A	184	GLY	C-O	5.47	1.32	1.23

All (19) bond angle outliers are listed below:

Mol	Chain	Res	Type	Atoms	Z	Observed(°)	Ideal(°)
1	B	17	ILE	O-C-N	13.72	147.18	121.10
1	A	17	ILE	O-C-N	12.99	145.78	121.10
1	C	17	ILE	O-C-N	12.97	145.74	121.10
1	D	17	ILE	O-C-N	12.28	144.44	121.10
1	D	17	ILE	C-N-CD	11.23	151.97	128.40
1	A	17	ILE	C-N-CD	10.91	151.31	128.40
1	B	17	ILE	C-N-CD	10.89	151.28	128.40
1	C	17	ILE	C-N-CD	10.76	151.00	128.40
1	B	17	ILE	C-N-CA	-9.36	82.67	122.00
1	B	17	ILE	CA-C-N	-9.28	91.12	117.10

*Continued on next page...*

*Continued from previous page...*

Mol	Chain	Res	Type	Atoms	Z	Observed(°)	Ideal(°)
1	C	17	ILE	C-N-CA	-9.12	83.69	122.00
1	A	17	ILE	C-N-CA	-9.09	83.83	122.00
1	C	17	ILE	CA-C-N	-8.78	92.52	117.10
1	D	102	ARG	NE-CZ-NH1	8.78	124.69	120.30
1	A	17	ILE	CA-C-N	-8.76	92.57	117.10
1	D	17	ILE	C-N-CA	-8.33	87.00	122.00
1	D	17	ILE	CA-C-N	-8.23	94.05	117.10
1	D	102	ARG	NE-CZ-NH2	-6.48	117.06	120.30
1	C	3	SER	N-CA-C	5.01	124.53	111.00

There are no chirality outliers.

There are no planarity outliers.

## 5.2 Too-close contacts

In the following table, the Non-H and H(model) columns list the number of non-hydrogen atoms and hydrogen atoms in the chain respectively. The H(added) column lists the number of hydrogen atoms added and optimized by MolProbity. The Clashes column lists the number of clashes within the asymmetric unit, whereas Symm-Clashes lists symmetry related clashes.

Mol	Chain	Non-H	H(model)	H(added)	Clashes	Symm-Clashes
1	A	2285	0	2243	75	10
1	B	2285	0	2243	88	11
1	C	2285	0	2243	79	22
1	D	2285	0	2243	79	6
2	A	4	0	3	0	0
2	B	4	0	3	0	0
2	C	4	0	3	0	0
2	D	4	0	3	0	0
3	A	27	0	22	2	0
3	B	27	0	22	2	0
3	C	27	0	22	3	0
3	D	27	0	22	2	0
4	A	84	0	0	0	0
4	B	72	0	0	3	0
4	C	74	0	0	0	0
4	D	59	0	0	0	1
All	All	9553	0	9072	317	30

The all-atom clashscore is defined as the number of clashes found per 1000 atoms (including hydrogen atoms). The all-atom clashscore for this structure is 18.

All (317) close contacts within the same asymmetric unit are listed below, sorted by their clash magnitude.

Atom-1	Atom-2	Interatomic distance (Å)	Clash overlap (Å)
1:D:99:TRP:CE2	1:D:102:ARG:NH1	2.08	1.19
1:D:99:TRP:NE1	1:D:102:ARG:NH1	1.99	1.10
1:B:47:TRP:HZ2	4:B:5012:HOH:O	1.57	0.85
1:B:47:TRP:CZ2	4:B:5012:HOH:O	2.28	0.84
1:A:204:THR:HG22	1:A:205:SER:H	1.40	0.84
1:B:204:THR:HG22	1:B:205:SER:H	1.43	0.83
1:C:99:TRP:CE2	1:C:102:ARG:NH1	2.51	0.77
1:A:27:ALA:HA	1:A:90:MET:HE3	1.69	0.75
1:B:99:TRP:CZ2	1:B:102:ARG:NH1	2.57	0.73
1:A:99:TRP:CZ2	1:A:102:ARG:NH1	2.56	0.72
1:B:99:TRP:CE2	1:B:102:ARG:NH1	2.57	0.72
1:A:36:ASP:HB3	1:A:39:SER:HB3	1.72	0.72
1:B:27:ALA:HA	1:B:90:MET:HE3	1.71	0.71
1:C:99:TRP:CZ2	1:C:102:ARG:NH1	2.58	0.71
1:D:36:ASP:HB3	1:D:39:SER:HB3	1.73	0.71
1:B:36:ASP:HB3	1:B:39:SER:HB3	1.72	0.70
1:C:27:ALA:HA	1:C:90:MET:HE3	1.74	0.70
1:D:27:ALA:HA	1:D:90:MET:HE3	1.74	0.69
1:B:32:LEU:HG	1:B:198:LEU:HD23	1.75	0.69
1:D:209:VAL:O	1:D:210:ASN:O	2.10	0.69
1:A:99:TRP:CE2	1:A:102:ARG:NH1	2.60	0.69
1:B:217:THR:HG21	1:B:239:ARG:HE	1.57	0.69
1:D:99:TRP:CD1	1:D:102:ARG:NH1	2.61	0.68
1:A:217:THR:HG21	1:A:239:ARG:HE	1.57	0.68
1:D:217:THR:HG21	1:D:239:ARG:HE	1.59	0.68
1:A:27:ALA:HA	1:A:90:MET:CE	2.25	0.67
1:B:191:ASN:HB3	1:B:194:TYR:O	1.95	0.67
1:D:198:LEU:HG	1:D:223:GLN:O	1.94	0.67
1:C:36:ASP:HB3	1:C:39:SER:HB3	1.77	0.66
1:C:217:THR:HG21	1:C:239:ARG:HE	1.60	0.66
1:A:84:VAL:HA	1:A:113:GLU:O	1.96	0.66
1:C:200:LYS:HG3	1:C:235:PHE:HE2	1.60	0.66
1:C:27:ALA:HA	1:C:90:MET:CE	2.26	0.65
1:B:27:ALA:HA	1:B:90:MET:CE	2.26	0.64
1:C:84:VAL:HA	1:C:113:GLU:O	1.97	0.64
1:B:84:VAL:HA	1:B:113:GLU:O	1.97	0.64
1:A:198:LEU:HG	1:A:223:GLN:O	1.98	0.64
1:D:200:LYS:HG3	1:D:235:PHE:HE2	1.63	0.64
1:B:198:LEU:HG	1:B:223:GLN:O	1.99	0.63
1:C:209:VAL:O	1:C:210:ASN:O	2.15	0.63

*Continued on next page...*

*Continued from previous page...*

Atom-1	Atom-2	Interatomic distance (Å)	Clash overlap (Å)
1:A:191:ASN:HB3	1:A:194:TYR:O	1.98	0.63
1:B:200:LYS:HG3	1:B:235:PHE:HE2	1.63	0.63
1:B:49:LEU:HG	1:B:53:ARG:NH2	2.13	0.62
1:C:198:LEU:HG	1:C:223:GLN:O	1.99	0.62
1:D:84:VAL:HA	1:D:113:GLU:O	1.99	0.62
1:D:32:LEU:HG	1:D:198:LEU:HD23	1.82	0.62
1:A:269:ASP:O	1:A:270:PHE:HB2	1.99	0.61
1:A:200:LYS:HG3	1:A:235:PHE:HE2	1.65	0.61
1:D:204:THR:HG22	1:D:205:SER:H	1.66	0.61
1:C:191:ASN:HB3	1:C:194:TYR:O	2.00	0.61
1:D:191:ASN:HB3	1:D:194:TYR:O	2.01	0.61
1:C:200:LYS:HG3	1:C:235:PHE:CE2	2.36	0.60
1:D:27:ALA:HA	1:D:90:MET:CE	2.31	0.60
1:B:24:GLY:CA	1:B:89:LYS:HD2	2.32	0.60
1:D:200:LYS:HG3	1:D:235:PHE:CE2	2.37	0.60
1:C:136:LEU:N	1:C:136:LEU:HD13	2.16	0.60
1:C:269:ASP:O	1:C:270:PHE:HB2	2.02	0.60
1:C:24:GLY:CA	1:C:89:LYS:HD2	2.31	0.60
1:C:32:LEU:HG	1:C:198:LEU:HD23	1.84	0.59
1:A:190:LYS:HE2	1:A:190:LYS:O	2.03	0.59
1:B:200:LYS:HG3	1:B:235:PHE:CE2	2.37	0.58
1:D:84:VAL:HB	1:D:115:ALA:HB3	1.85	0.58
1:D:47:TRP:CZ2	1:D:267:LEU:HD11	2.38	0.58
1:D:190:LYS:O	1:D:190:LYS:HE2	2.03	0.58
1:C:190:LYS:O	1:C:190:LYS:HE2	2.04	0.58
1:A:32:LEU:HG	1:A:198:LEU:HD23	1.86	0.57
1:A:41:THR:O	1:A:45:LYS:HB2	2.03	0.57
1:A:40:ARG:HA	1:A:195:LYS:HD3	1.85	0.57
1:A:200:LYS:HG3	1:A:235:PHE:CE2	2.39	0.57
1:B:136:LEU:N	1:B:136:LEU:HD13	2.19	0.57
1:B:269:ASP:O	1:B:270:PHE:HB2	2.05	0.57
1:D:24:GLY:CA	1:D:89:LYS:HD2	2.35	0.57
1:C:47:TRP:CZ2	1:C:267:LEU:HD11	2.40	0.56
1:A:221:THR:HG23	1:A:237:LYS:HE2	1.85	0.56
1:A:47:TRP:CZ2	1:A:267:LEU:HD11	2.40	0.56
1:C:40:ARG:HA	1:C:195:LYS:HD3	1.87	0.56
1:B:221:THR:HG23	1:B:237:LYS:HE2	1.87	0.56
1:C:99:TRP:O	1:C:102:ARG:HB3	2.06	0.56
1:D:99:TRP:CZ2	1:D:102:ARG:NH1	2.71	0.55
1:D:209:VAL:O	1:D:210:ASN:C	2.44	0.55
1:C:204:THR:HG22	1:C:205:SER:H	1.72	0.55

*Continued on next page...*

*Continued from previous page...*

Atom-1	Atom-2	Interatomic distance (Å)	Clash overlap (Å)
1:B:40:ARG:HA	1:B:195:LYS:HD3	1.88	0.55
1:A:84:VAL:HB	1:A:115:ALA:HB3	1.87	0.55
1:B:190:LYS:HE2	1:B:190:LYS:O	2.06	0.55
1:D:269:ASP:O	1:D:270:PHE:HB2	2.05	0.55
1:D:140:PHE:CE1	1:D:157:LEU:HD13	2.42	0.55
1:A:204:THR:HG22	1:A:205:SER:N	2.18	0.55
1:A:24:GLY:CA	1:A:89:LYS:HD2	2.37	0.55
1:B:47:TRP:CZ2	1:B:267:LEU:HD11	2.42	0.54
1:A:227:ALA:HB1	1:A:234:GLY:HA3	1.89	0.54
1:D:49:LEU:HG	1:D:53:ARG:NH2	2.22	0.54
1:B:210:ASN:OD1	1:C:204:THR:N	2.38	0.54
1:C:84:VAL:HB	1:C:115:ALA:HB3	1.90	0.54
1:D:40:ARG:HA	1:D:195:LYS:HD3	1.89	0.54
1:D:41:THR:O	1:D:45:LYS:HB2	2.07	0.54
1:B:140:PHE:CE1	1:B:157:LEU:HD13	2.42	0.53
1:A:136:LEU:HD13	1:A:136:LEU:N	2.23	0.53
1:A:142:HIS:HE1	1:A:240:LEU:HG	1.73	0.53
1:B:41:THR:O	1:B:45:LYS:HB2	2.09	0.53
1:C:41:THR:O	1:C:45:LYS:HB2	2.08	0.53
1:D:221:THR:HG23	1:D:237:LYS:HE2	1.89	0.53
1:C:209:VAL:O	1:C:210:ASN:C	2.46	0.53
1:B:99:TRP:O	1:B:102:ARG:HB3	2.09	0.53
1:C:204:THR:HG22	1:C:205:SER:N	2.23	0.53
1:C:49:LEU:HG	1:C:53:ARG:NH2	2.23	0.53
1:A:140:PHE:CE1	1:A:157:LEU:HD13	2.44	0.53
1:B:189:GLY:O	1:B:190:LYS:HG3	2.09	0.52
1:D:204:THR:HG22	1:D:205:SER:N	2.24	0.52
1:D:142:HIS:HE1	1:D:240:LEU:HG	1.74	0.52
1:D:135:CYS:HB3	1:D:172:ILE:HG13	1.90	0.52
1:A:204:THR:N	1:D:210:ASN:OD1	2.40	0.52
1:D:227:ALA:HB1	1:D:234:GLY:HA3	1.92	0.52
1:B:142:HIS:HE1	1:B:240:LEU:HG	1.75	0.52
1:D:136:LEU:HD13	1:D:136:LEU:N	2.25	0.52
1:B:135:CYS:HB3	1:B:172:ILE:HG13	1.92	0.51
1:B:84:VAL:HB	1:B:115:ALA:HB3	1.92	0.51
1:D:116:ASN:HA	3:D:3293:SAM:N1	2.25	0.51
1:C:142:HIS:HE1	1:C:240:LEU:HG	1.74	0.51
1:A:108:ASP:O	1:B:99:TRP:HZ2	1.94	0.51
1:B:227:ALA:HB1	1:B:234:GLY:HA3	1.92	0.51
1:C:140:PHE:CE1	1:C:157:LEU:HD13	2.46	0.51
1:A:149:ASP:C	1:A:151:SER:H	2.14	0.50

*Continued on next page...*

*Continued from previous page...*

Atom-1	Atom-2	Interatomic distance (Å)	Clash overlap (Å)
1:C:60:VAL:HG11	1:C:74:LEU:CD1	2.41	0.50
1:C:131:ASP:HA	1:C:165:ARG:HD3	1.92	0.50
1:A:150:GLN:NE2	1:A:153:HIS:ND1	2.59	0.50
1:B:117:TRP:CZ3	1:B:140:PHE:HA	2.47	0.50
1:C:149:ASP:C	1:C:151:SER:H	2.15	0.50
1:A:227:ALA:CB	1:A:234:GLY:HA3	2.42	0.50
1:B:251:THR:HG23	1:B:264:HIS:CE1	2.47	0.50
1:C:221:THR:HG23	1:C:237:LYS:HE2	1.94	0.49
1:D:150:GLN:NE2	1:D:153:HIS:ND1	2.60	0.49
1:C:117:TRP:CZ3	1:C:140:PHE:HA	2.47	0.49
1:C:150:GLN:NE2	1:C:153:HIS:ND1	2.60	0.49
1:B:264:HIS:HD2	1:B:288:LEU:HD21	1.76	0.49
1:B:227:ALA:CB	1:B:234:GLY:HA3	2.43	0.49
1:B:24:GLY:HA2	1:B:89:LYS:HD2	1.95	0.49
1:C:116:ASN:HA	3:C:2293:SAM:N1	2.27	0.49
1:D:117:TRP:CZ3	1:D:140:PHE:HA	2.48	0.49
1:D:85:ASP:HB3	1:D:91:LEU:HD22	1.94	0.49
1:C:121:ASP:OD1	1:C:122:LYS:HD3	2.13	0.49
1:B:196:SER:OG	1:B:198:LEU:HB2	2.14	0.48
1:D:149:ASP:C	1:D:151:SER:H	2.17	0.48
1:A:99:TRP:O	1:A:102:ARG:HB3	2.12	0.48
1:B:150:GLN:NE2	1:B:153:HIS:ND1	2.61	0.48
1:B:37:THR:HG23	1:B:38:ARG:NH2	2.29	0.48
1:A:121:ASP:OD1	1:A:122:LYS:HD3	2.13	0.48
1:B:85:ASP:HB3	1:B:91:LEU:HD22	1.95	0.48
1:C:35:GLY:CA	1:C:196:SER:HB2	2.44	0.48
1:C:267:LEU:HB3	1:C:271:LYS:O	2.14	0.48
1:D:44:TYR:HB3	1:D:270:PHE:CD1	2.48	0.48
1:A:48:LEU:O	1:A:52:LEU:HG	2.14	0.48
1:B:116:ASN:HA	3:B:1293:SAM:N1	2.28	0.48
1:D:21:TYR:CE1	3:D:3293:SAM:H3'	2.48	0.48
1:B:149:ASP:C	1:B:151:SER:H	2.17	0.48
1:B:35:GLY:CA	1:B:196:SER:HB2	2.43	0.48
1:C:224:VAL:O	1:C:225:PRO:C	2.50	0.48
1:A:264:HIS:HD2	1:A:288:LEU:HD21	1.79	0.48
1:B:37:THR:HG23	1:B:38:ARG:CZ	2.43	0.48
1:A:154:ARG:HG2	1:A:256:GLU:OE2	2.13	0.48
1:B:48:LEU:O	1:B:52:LEU:HG	2.14	0.48
1:C:189:GLY:O	1:C:190:LYS:HG3	2.14	0.48
1:C:24:GLY:HA2	1:C:89:LYS:HD2	1.95	0.48
1:A:44:TYR:HB3	1:A:270:PHE:CD1	2.49	0.47

*Continued on next page...*

*Continued from previous page...*

Atom-1	Atom-2	Interatomic distance (Å)	Clash overlap (Å)
1:D:131:ASP:HA	1:D:165:ARG:HD3	1.94	0.47
1:B:250:PHE:O	1:B:254:VAL:HG12	2.14	0.47
1:C:44:TYR:HB3	1:C:270:PHE:CD1	2.50	0.47
1:C:227:ALA:HB1	1:C:234:GLY:HA3	1.95	0.47
1:D:121:ASP:OD1	1:D:122:LYS:HD3	2.14	0.47
1:C:135:CYS:HB3	1:C:172:ILE:HG13	1.95	0.47
1:D:227:ALA:CB	1:D:234:GLY:HA3	2.44	0.47
1:D:264:HIS:HD2	1:D:288:LEU:HD21	1.79	0.47
1:A:189:GLY:O	1:A:190:LYS:HG3	2.14	0.47
1:D:37:THR:HG23	1:D:38:ARG:NH2	2.30	0.47
1:A:165:ARG:HG2	1:A:166:PRO:O	2.15	0.47
1:D:99:TRP:O	1:D:102:ARG:HB3	2.14	0.47
1:A:116:ASN:HA	3:A:293:SAM:N1	2.30	0.47
1:B:131:ASP:HA	1:B:165:ARG:HD3	1.97	0.47
1:B:211:ASN:HD22	1:C:184:GLY:HA3	1.80	0.47
1:C:48:LEU:O	1:C:52:LEU:HG	2.15	0.47
1:A:49:LEU:HG	1:A:53:ARG:NH2	2.29	0.47
1:A:21:TYR:CE1	3:A:293:SAM:H3'	2.50	0.46
1:A:267:LEU:HB3	1:A:271:LYS:O	2.14	0.46
1:C:227:ALA:CB	1:C:234:GLY:HA3	2.45	0.46
1:A:60:VAL:HG11	1:A:74:LEU:CD1	2.45	0.46
1:C:24:GLY:HA3	1:C:89:LYS:HD2	1.97	0.46
1:D:126:ALA:HB2	1:D:163:MET:SD	2.55	0.46
1:B:120:LEU:HB3	1:B:159:ASN:HB3	1.97	0.46
1:D:35:GLY:CA	1:D:196:SER:HB2	2.46	0.46
1:A:35:GLY:CA	1:A:196:SER:HB2	2.46	0.46
1:A:204:THR:O	1:A:205:SER:CB	2.64	0.46
1:C:37:THR:HG23	1:C:38:ARG:NH2	2.30	0.46
1:D:189:GLY:O	1:D:190:LYS:HG3	2.16	0.46
1:A:126:ALA:HB2	1:A:163:MET:SD	2.55	0.46
1:B:49:LEU:HB3	1:B:53:ARG:CZ	2.46	0.46
1:D:23:ASP:OD2	1:D:25:GLU:HB2	2.16	0.46
1:B:154:ARG:HG2	1:B:256:GLU:OE2	2.17	0.45
1:C:25:GLU:O	1:C:29:VAL:HG22	2.17	0.45
1:A:120:LEU:HB3	1:A:159:ASN:HB3	1.98	0.45
1:B:24:GLY:HA3	1:B:89:LYS:HD2	1.98	0.45
1:A:131:ASP:HA	1:A:165:ARG:HD3	1.97	0.45
1:B:121:ASP:OD1	1:B:122:LYS:HD3	2.16	0.45
1:B:267:LEU:HB3	1:B:271:LYS:O	2.17	0.45
1:B:27:ALA:CA	1:B:90:MET:HE3	2.44	0.45
1:D:154:ARG:HG2	1:D:256:GLU:OE2	2.17	0.45

*Continued on next page...*

*Continued from previous page...*

Atom-1	Atom-2	Interatomic distance (Å)	Clash overlap (Å)
1:D:48:LEU:O	1:D:52:LEU:HG	2.17	0.45
1:D:60:VAL:HG11	1:D:74:LEU:CD1	2.46	0.45
1:A:212:LYS:HZ3	1:A:214:HIS:HA	1.82	0.45
1:B:23:ASP:OD2	1:B:25:GLU:HB2	2.16	0.45
1:A:37:THR:HG23	1:A:38:ARG:CZ	2.47	0.45
1:D:37:THR:HG23	1:D:38:ARG:CZ	2.46	0.45
1:B:60:VAL:HG11	1:B:74:LEU:CD1	2.47	0.45
1:C:251:THR:HG23	1:C:264:HIS:CE1	2.51	0.45
1:C:85:ASP:HB3	1:C:91:LEU:HD22	1.99	0.45
1:D:165:ARG:HG2	1:D:166:PRO:O	2.17	0.45
1:A:143:LEU:HA	1:A:143:LEU:HD12	1.84	0.44
1:A:196:SER:OG	1:A:198:LEU:HB2	2.16	0.44
1:C:264:HIS:HD2	1:C:288:LEU:HD21	1.81	0.44
1:D:24:GLY:HA3	1:D:89:LYS:HD2	1.97	0.44
1:A:251:THR:O	1:A:255:GLN:HG3	2.17	0.44
1:B:262:CYS:HA	1:B:291:THR:HG23	1.99	0.44
1:C:196:SER:OG	1:C:198:LEU:HB2	2.17	0.44
1:C:198:LEU:HD12	1:C:198:LEU:HA	1.82	0.44
1:D:251:THR:HG23	1:D:264:HIS:CE1	2.52	0.44
1:C:130:PHE:O	1:C:165:ARG:HB3	2.18	0.44
1:B:204:THR:HG22	1:B:205:SER:N	2.22	0.44
1:C:191:ASN:ND2	1:C:283:TYR:CE1	2.83	0.44
1:D:24:GLY:HA2	1:D:89:LYS:HD2	2.00	0.44
1:A:24:GLY:HA3	1:A:89:LYS:HD2	1.98	0.44
1:C:40:ARG:HA	1:C:195:LYS:HZ2	1.83	0.44
1:A:204:THR:CG2	1:A:205:SER:H	2.21	0.44
1:C:165:ARG:HG2	1:C:166:PRO:O	2.18	0.44
1:B:165:ARG:HG2	1:B:166:PRO:O	2.18	0.43
1:C:61:LEU:HD22	1:C:130:PHE:CE1	2.52	0.43
1:B:44:TYR:HB3	1:B:270:PHE:CD1	2.52	0.43
1:C:37:THR:HG23	1:C:38:ARG:CZ	2.49	0.43
1:A:150:GLN:HB3	1:A:150:GLN:HE21	1.64	0.43
1:A:37:THR:HG23	1:A:38:ARG:NH2	2.33	0.43
1:B:187:PRO:HA	1:B:188:PRO:HD3	1.86	0.43
1:B:91:LEU:HA	1:B:91:LEU:HD12	1.85	0.43
1:B:21:TYR:CE1	3:B:1293:SAM:H3'	2.53	0.43
1:C:154:ARG:HG2	1:C:256:GLU:OE2	2.18	0.43
1:A:117:TRP:CZ3	1:A:140:PHE:HA	2.54	0.43
1:A:251:THR:HG23	1:A:264:HIS:CE1	2.53	0.43
1:D:267:LEU:HB3	1:D:271:LYS:O	2.18	0.43
1:C:251:THR:O	1:C:255:GLN:HG3	2.18	0.43

*Continued on next page...*



*Continued from previous page...*

Atom-1	Atom-2	Interatomic distance (Å)	Clash overlap (Å)
1:B:204:THR:O	1:B:205:SER:CB	2.67	0.43
1:D:196:SER:OG	1:D:198:LEU:HB2	2.18	0.43
1:B:217:THR:CG2	1:B:239:ARG:HE	2.29	0.43
1:C:215:MET:HA	1:C:244:PRO:HD3	2.00	0.43
1:A:198:LEU:HA	1:A:198:LEU:HD12	1.82	0.43
1:C:247:LEU:HD22	1:C:284:PHE:CE2	2.53	0.43
1:B:150:GLN:HE21	1:B:150:GLN:HB3	1.64	0.43
1:D:224:VAL:O	1:D:225:PRO:C	2.57	0.43
1:D:85:ASP:HB3	1:D:91:LEU:CD2	2.49	0.42
1:A:250:PHE:O	1:A:254:VAL:HG12	2.19	0.42
1:A:140:PHE:CZ	1:A:157:LEU:HD22	2.54	0.42
1:B:264:HIS:HD2	1:B:288:LEU:CD2	2.32	0.42
1:B:204:THR:CG2	1:B:205:SER:H	2.25	0.42
1:B:215:MET:HA	1:B:244:PRO:HD3	2.01	0.42
1:D:120:LEU:HB3	1:D:159:ASN:HB3	2.01	0.42
1:D:254:VAL:HG13	1:D:255:GLN:N	2.35	0.42
1:D:118:LEU:HA	1:D:118:LEU:HD12	1.89	0.42
1:D:181:LEU:HA	1:D:181:LEU:HD12	1.89	0.42
1:A:239:ARG:O	1:A:240:LEU:HD13	2.20	0.42
1:C:150:GLN:HB3	1:C:150:GLN:HE21	1.65	0.42
1:C:262:CYS:HA	1:C:291:THR:HG23	2.02	0.42
1:D:143:LEU:HA	1:D:143:LEU:HD12	1.83	0.42
1:D:198:LEU:HA	1:D:198:LEU:HD12	1.82	0.42
1:D:247:LEU:HD22	1:D:284:PHE:CE2	2.55	0.42
1:B:180:ILE:HG12	1:B:186:ALA:HA	2.02	0.42
1:A:287:VAL:C	1:A:288:LEU:HD22	2.40	0.42
1:A:24:GLY:HA2	1:A:89:LYS:HD2	2.02	0.42
1:C:120:LEU:HB3	1:C:159:ASN:HB3	2.01	0.42
1:B:224:VAL:O	1:B:225:PRO:C	2.57	0.41
1:D:251:THR:O	1:D:255:GLN:HG3	2.20	0.41
1:D:262:CYS:HA	1:D:291:THR:HG23	2.01	0.41
1:B:198:LEU:HA	1:B:198:LEU:HD12	1.81	0.41
1:B:141:ALA:HB1	1:B:242:TYR:HB3	2.02	0.41
1:C:126:ALA:HB2	1:C:163:MET:SD	2.60	0.41
1:C:21:TYR:CE1	3:C:2293:SAM:H3'	2.54	0.41
1:D:130:PHE:O	1:D:165:ARG:HB3	2.20	0.41
1:A:204:THR:HA	1:A:218:LEU:HD23	2.01	0.41
1:A:215:MET:HA	1:A:244:PRO:HD3	2.02	0.41
1:B:239:ARG:O	1:B:240:LEU:HD13	2.19	0.41
1:B:251:THR:O	1:B:255:GLN:HG3	2.20	0.41
1:C:23:ASP:OD2	1:C:25:GLU:HB2	2.20	0.41

*Continued on next page...*

*Continued from previous page...*

Atom-1	Atom-2	Interatomic distance (Å)	Clash overlap (Å)
1:D:153:HIS:O	1:D:157:LEU:HB2	2.21	0.41
1:D:191:ASN:ND2	1:D:283:TYR:CE1	2.89	0.41
1:A:187:PRO:HA	1:A:188:PRO:HD3	1.86	0.41
1:B:212:LYS:HD3	1:B:212:LYS:O	2.21	0.41
1:B:85:ASP:HB3	1:B:91:LEU:CD2	2.50	0.41
1:C:254:VAL:HG13	1:C:255:GLN:N	2.36	0.41
1:C:72:ILE:O	1:C:76:GLU:HG3	2.20	0.41
1:A:212:LYS:NZ	1:A:214:HIS:HA	2.35	0.41
1:A:149:ASP:O	1:A:151:SER:N	2.54	0.41
1:A:209:VAL:O	1:A:210:ASN:C	2.58	0.41
1:B:181:LEU:HA	1:B:181:LEU:HD12	1.93	0.41
1:C:105:PRO:O	1:C:109:LYS:HE3	2.20	0.41
1:B:105:PRO:O	1:B:109:LYS:HE3	2.20	0.41
1:B:253:LEU:HD12	1:B:253:LEU:HA	1.88	0.41
1:C:118:LEU:HD12	1:C:118:LEU:HA	1.92	0.41
1:D:215:MET:HA	1:D:244:PRO:HD3	2.03	0.41
1:B:32:LEU:CG	1:B:198:LEU:HD23	2.49	0.41
1:B:40:ARG:HA	1:B:195:LYS:HZ2	1.86	0.40
1:C:139:SER:OG	3:C:2293:SAM:H5'2	2.20	0.40
1:D:25:GLU:O	1:D:29:VAL:HG22	2.21	0.40
1:A:224:VAL:O	1:A:225:PRO:C	2.58	0.40
1:B:61:LEU:HD22	1:B:130:PHE:CE1	2.56	0.40
1:B:252:GLU:HA	4:B:5253:HOH:O	2.19	0.40
1:C:141:ALA:HB1	1:C:242:TYR:HB3	2.03	0.40
1:B:49:LEU:HA	1:B:49:LEU:HD12	1.92	0.40
1:D:187:PRO:HA	1:D:188:PRO:HD3	1.87	0.40
1:D:72:ILE:HD11	1:D:97:GLU:HG2	2.04	0.40
1:A:254:VAL:HG13	1:A:255:GLN:N	2.35	0.40
1:A:23:ASP:OD2	1:A:25:GLU:HB2	2.22	0.40
1:C:239:ARG:O	1:C:240:LEU:HD13	2.22	0.40
1:D:91:LEU:HA	1:D:91:LEU:HD12	1.87	0.40

All (30) symmetry-related close contacts are listed below. The label for Atom-2 includes the symmetry operator and encoded unit-cell translations to be applied.

Atom-1	Atom-2	Interatomic distance (Å)	Clash overlap (Å)
1:A:1:VAL:CA	1:C:51:LEU:CD2[4_477]	0.89	1.31
1:B:77:GLU:O	1:C:226:GLY:N[2_674]	1.45	0.75
1:A:1:VAL:C	1:C:51:LEU:CD2[4_477]	1.57	0.63
1:C:2:ASP:O	1:C:48:LEU:N[4_477]	1.59	0.61

*Continued on next page...*

Continued from previous page...

Atom-1	Atom-2	Interatomic distance (Å)	Clash overlap (Å)
1:A:1:VAL:CB	1:C:51:LEU:CD2[4_477]	1.73	0.47
1:C:1:VAL:C	1:C:48:LEU:CD2[4_477]	1.81	0.39
1:C:1:VAL:O	1:C:48:LEU:CD2[4_477]	1.83	0.37
1:B:261:ARG:NH1	1:D:109:LYS:CA[2_674]	1.86	0.34
1:B:264:HIS:O	4:D:5194:HOH:O[2_674]	1.93	0.27
1:B:261:ARG:NH1	1:D:109:LYS:C[2_674]	1.95	0.25
1:C:2:ASP:O	1:C:44:TYR:O[4_477]	2.00	0.20
1:B:109:LYS:CE	1:C:197:ASP:OD1[2_674]	2.02	0.18
1:A:261:ARG:NE	1:D:100:ASN:O[2_574]	2.02	0.18
1:A:1:VAL:CG1	1:C:51:LEU:CB[4_477]	2.05	0.15
1:B:292:GLY:O	1:C:102:ARG:NH2[2_674]	2.06	0.14
1:B:78:GLY:O	1:C:225:PRO:CG[2_674]	2.08	0.12
1:A:46:ALA:CB	1:B:188:PRO:O[3_646]	2.08	0.12
1:A:1:VAL:O	1:C:51:LEU:CD2[4_477]	2.10	0.10
1:A:1:VAL:CG1	1:C:51:LEU:CD2[4_477]	2.11	0.09
1:C:1:VAL:N	1:C:73:MET:CE[4_477]	2.13	0.07
1:B:54:GLN:OE1	1:D:122:LYS:O[2_674]	2.13	0.07
1:B:261:ARG:NH1	1:D:109:LYS:O[2_674]	2.15	0.05
1:C:2:ASP:N	1:C:48:LEU:CB[4_477]	2.16	0.04
1:A:1:VAL:CB	1:C:47:TRP:CH2[4_477]	2.17	0.03
1:C:3:SER:N	1:C:270:PHE:CD2[4_477]	2.17	0.03
1:C:3:SER:CA	1:C:47:TRP:CB[4_477]	2.17	0.03
1:C:2:ASP:C	1:C:44:TYR:O[4_477]	2.18	0.02
1:B:54:GLN:NE2	1:D:123:ASP:OD1[2_674]	2.18	0.02
1:C:3:SER:C	1:C:47:TRP:CG[4_477]	2.19	0.01
1:A:2:ASP:N	1:C:287:VAL:CG1[4_477]	2.19	0.01

## 5.3 Torsion angles ⓘ

### 5.3.1 Protein backbone ⓘ

In the following table, the Percentiles column shows the percent Ramachandran outliers of the chain as a percentile score with respect to all X-ray entries followed by that with respect to entries of similar resolution.

The Analysed column shows the number of residues for which the backbone conformation was analysed, and the total number of residues.

Mol	Chain	Analysed	Favoured	Allowed	Outliers	Percentiles	
1	A	290/292 (99%)	256 (88%)	25 (9%)	9 (3%)	5	16
1	B	290/292 (99%)	257 (89%)	26 (9%)	7 (2%)	7	23

Continued on next page...

*Continued from previous page...*

Mol	Chain	Analysed	Favoured	Allowed	Outliers	Percentiles	
1	C	290/292 (99%)	254 (88%)	26 (9%)	10 (3%)	4	15
1	D	290/292 (99%)	261 (90%)	21 (7%)	8 (3%)	6	19
All	All	1160/1168 (99%)	1028 (89%)	98 (8%)	34 (3%)	5	18

All (34) Ramachandran outliers are listed below:

Mol	Chain	Res	Type
1	A	4	VAL
1	A	205	SER
1	B	205	SER
1	C	211	ASN
1	D	211	ASN
1	A	2	ASP
1	A	44	TYR
1	A	189	GLY
1	B	44	TYR
1	B	69	VAL
1	B	189	GLY
1	C	5	TYR
1	C	44	TYR
1	C	189	GLY
1	D	44	TYR
1	D	189	GLY
1	B	268	GLY
1	C	69	VAL
1	C	150	GLN
1	D	69	VAL
1	D	150	GLN
1	D	210	ASN
1	D	268	GLY
1	A	69	VAL
1	A	150	GLN
1	B	150	GLN
1	C	210	ASN
1	C	268	GLY
1	A	18	PRO
1	A	268	GLY
1	B	18	PRO
1	C	8	ARG
1	C	18	PRO
1	D	18	PRO

### 5.3.2 Protein sidechains ⓘ

In the following table, the Percentiles column shows the percent sidechain outliers of the chain as a percentile score with respect to all X-ray entries followed by that with respect to entries of similar resolution.

The Analysed column shows the number of residues for which the sidechain conformation was analysed, and the total number of residues.

Mol	Chain	Analysed	Rotameric	Outliers	Percentiles	
1	A	242/242 (100%)	195 (81%)	47 (19%)	1	5
1	B	242/242 (100%)	196 (81%)	46 (19%)	2	5
1	C	242/242 (100%)	194 (80%)	48 (20%)	1	4
1	D	242/242 (100%)	196 (81%)	46 (19%)	2	5
All	All	968/968 (100%)	781 (81%)	187 (19%)	1	5

All (187) residues with a non-rotameric sidechain are listed below:

Mol	Chain	Res	Type
1	A	6	ARG
1	A	7	THR
1	A	9	SER
1	A	10	LEU
1	A	15	GLU
1	A	23	ASP
1	A	31	GLN
1	A	32	LEU
1	A	37	THR
1	A	38	ARG
1	A	41	THR
1	A	43	GLU
1	A	49	LEU
1	A	54	GLN
1	A	71	SER
1	A	82	THR
1	A	83	SER
1	A	91	LEU
1	A	95	LEU
1	A	96	LYS
1	A	101	ARG
1	A	102	ARG
1	A	118	LEU
1	A	128	ASP

*Continued on next page...*

*Continued from previous page...*

Mol	Chain	Res	Type
1	A	136	LEU
1	A	147	LYS
1	A	150	GLN
1	A	157	LEU
1	A	162	SER
1	A	165	ARG
1	A	169	LEU
1	A	181	LEU
1	A	182	SER
1	A	195	LYS
1	A	198	LEU
1	A	205	SER
1	A	208	THR
1	A	212	LYS
1	A	229	ARG
1	A	236	SER
1	A	239	ARG
1	A	240	LEU
1	A	241	SER
1	A	263	GLN
1	A	266	VAL
1	A	267	LEU
1	A	274	ARG
1	B	1	VAL
1	B	5	TYR
1	B	7	THR
1	B	10	LEU
1	B	23	ASP
1	B	31	GLN
1	B	32	LEU
1	B	37	THR
1	B	38	ARG
1	B	41	THR
1	B	43	GLU
1	B	49	LEU
1	B	54	GLN
1	B	71	SER
1	B	82	THR
1	B	83	SER
1	B	91	LEU
1	B	95	LEU
1	B	96	LYS

*Continued on next page...*

*Continued from previous page...*

Mol	Chain	Res	Type
1	B	101	ARG
1	B	102	ARG
1	B	118	LEU
1	B	128	ASP
1	B	136	LEU
1	B	147	LYS
1	B	150	GLN
1	B	157	LEU
1	B	162	SER
1	B	165	ARG
1	B	169	LEU
1	B	181	LEU
1	B	182	SER
1	B	195	LYS
1	B	198	LEU
1	B	205	SER
1	B	208	THR
1	B	212	LYS
1	B	229	ARG
1	B	236	SER
1	B	239	ARG
1	B	240	LEU
1	B	241	SER
1	B	263	GLN
1	B	266	VAL
1	B	267	LEU
1	B	274	ARG
1	C	1	VAL
1	C	3	SER
1	C	5	TYR
1	C	7	THR
1	C	8	ARG
1	C	9	SER
1	C	23	ASP
1	C	31	GLN
1	C	32	LEU
1	C	37	THR
1	C	38	ARG
1	C	41	THR
1	C	43	GLU
1	C	49	LEU
1	C	54	GLN

*Continued on next page...*

*Continued from previous page...*

Mol	Chain	Res	Type
1	C	71	SER
1	C	82	THR
1	C	83	SER
1	C	91	LEU
1	C	95	LEU
1	C	96	LYS
1	C	101	ARG
1	C	102	ARG
1	C	118	LEU
1	C	128	ASP
1	C	136	LEU
1	C	147	LYS
1	C	150	GLN
1	C	157	LEU
1	C	162	SER
1	C	165	ARG
1	C	169	LEU
1	C	181	LEU
1	C	182	SER
1	C	195	LYS
1	C	198	LEU
1	C	205	SER
1	C	208	THR
1	C	212	LYS
1	C	229	ARG
1	C	236	SER
1	C	239	ARG
1	C	240	LEU
1	C	241	SER
1	C	263	GLN
1	C	266	VAL
1	C	267	LEU
1	C	274	ARG
1	D	5	TYR
1	D	9	SER
1	D	10	LEU
1	D	15	GLU
1	D	23	ASP
1	D	31	GLN
1	D	32	LEU
1	D	37	THR
1	D	38	ARG

*Continued on next page...*



*Continued from previous page...*

Mol	Chain	Res	Type
1	D	41	THR
1	D	43	GLU
1	D	49	LEU
1	D	54	GLN
1	D	59	ARG
1	D	71	SER
1	D	82	THR
1	D	83	SER
1	D	91	LEU
1	D	95	LEU
1	D	96	LYS
1	D	101	ARG
1	D	102	ARG
1	D	118	LEU
1	D	128	ASP
1	D	136	LEU
1	D	147	LYS
1	D	150	GLN
1	D	157	LEU
1	D	162	SER
1	D	165	ARG
1	D	169	LEU
1	D	181	LEU
1	D	182	SER
1	D	195	LYS
1	D	198	LEU
1	D	205	SER
1	D	208	THR
1	D	212	LYS
1	D	229	ARG
1	D	236	SER
1	D	240	LEU
1	D	241	SER
1	D	263	GLN
1	D	266	VAL
1	D	267	LEU
1	D	274	ARG

Some sidechains can be flipped to improve hydrogen bonding and reduce clashes. All (9) such sidechains are listed below:

Mol	Chain	Res	Type
1	A	55	HIS

*Continued on next page...*

*Continued from previous page...*

Mol	Chain	Res	Type
1	A	150	GLN
1	A	211	ASN
1	B	150	GLN
1	B	211	ASN
1	C	150	GLN
1	D	55	HIS
1	D	150	GLN
1	D	211	ASN

### 5.3.3 RNA [i](#)

There are no RNA molecules in this entry.

### 5.4 Non-standard residues in protein, DNA, RNA chains [i](#)

There are no non-standard protein/DNA/RNA residues in this entry.

### 5.5 Carbohydrates [i](#)

There are no carbohydrates in this entry.

### 5.6 Ligand geometry [i](#)

8 ligands are modelled in this entry.

In the following table, the Counts columns list the number of bonds (or angles) for which Mogul statistics could be retrieved, the number of bonds (or angles) that are observed in the model and the number of bonds (or angles) that are defined in the Chemical Component Dictionary. The Link column lists molecule types, if any, to which the group is linked. The Z score for a bond length (or angle) is the number of standard deviations the observed value is removed from the expected value. A bond length (or angle) with  $|Z| > 2$  is considered an outlier worth inspection. RMSZ is the root-mean-square of all Z scores of the bond lengths (or angles).

Mol	Type	Chain	Res	Link	Bond lengths			Bond angles		
					Counts	RMSZ	$\# Z  > 2$	Counts	RMSZ	$\# Z  > 2$
3	SAM	A	293	-	21,29,29	0.93	1 (4%)	17,42,42	1.36	2 (11%)
2	ACT	A	294	-	1,3,3	0.53	0	0,3,3	0.00	-
3	SAM	B	1293	-	21,29,29	0.92	1 (4%)	17,42,42	1.36	2 (11%)
2	ACT	B	1294	-	1,3,3	0.48	0	0,3,3	0.00	-
3	SAM	C	2293	-	21,29,29	0.95	1 (4%)	17,42,42	1.30	2 (11%)

Mol	Type	Chain	Res	Link	Bond lengths			Bond angles		
					Counts	RMSZ	# Z  > 2	Counts	RMSZ	# Z  > 2
2	ACT	C	2294	-	1,3,3	0.42	0	0,3,3	0.00	-
3	SAM	D	3293	-	21,29,29	1.02	2 (9%)	17,42,42	1.34	2 (11%)
2	ACT	D	3294	-	1,3,3	1.14	0	0,3,3	0.00	-

In the following table, the Chirals column lists the number of chiral outliers, the number of chiral centers analysed, the number of these observed in the model and the number defined in the Chemical Component Dictionary. Similar counts are reported in the Torsion and Rings columns. '-' means no outliers of that kind were identified.

Mol	Type	Chain	Res	Link	Chirals	Torsions	Rings
3	SAM	A	293	-	-	0/8/33/33	0/3/3/3
2	ACT	A	294	-	-	0/0/0/0	0/0/0/0
3	SAM	B	1293	-	-	0/8/33/33	0/3/3/3
2	ACT	B	1294	-	-	0/0/0/0	0/0/0/0
3	SAM	C	2293	-	-	0/8/33/33	0/3/3/3
2	ACT	C	2294	-	-	0/0/0/0	0/0/0/0
3	SAM	D	3293	-	-	0/8/33/33	0/3/3/3
2	ACT	D	3294	-	-	0/0/0/0	0/0/0/0

All (5) bond length outliers are listed below:

Mol	Chain	Res	Type	Atoms	Z	Observed(Å)	Ideal(Å)
3	B	1293	SAM	C2-N3	2.06	1.35	1.32
3	D	3293	SAM	C4-N3	2.06	1.38	1.35
3	C	2293	SAM	C2-N3	2.10	1.35	1.32
3	A	293	SAM	C2-N3	2.11	1.35	1.32
3	D	3293	SAM	C2-N3	2.44	1.36	1.32

All (8) bond angle outliers are listed below:

Mol	Chain	Res	Type	Atoms	Z	Observed(°)	Ideal(°)
3	A	293	SAM	C4'-O4'-C1'	-2.78	106.81	109.77
3	D	3293	SAM	C4'-O4'-C1'	-2.56	107.04	109.77
3	B	1293	SAM	C4'-O4'-C1'	-2.41	107.20	109.77
3	C	2293	SAM	C4'-O4'-C1'	-2.30	107.33	109.77
3	A	293	SAM	O2'-C2'-C3'	2.73	120.58	111.83
3	C	2293	SAM	O2'-C2'-C3'	2.85	120.95	111.83
3	B	1293	SAM	O2'-C2'-C3'	2.91	121.16	111.83
3	D	3293	SAM	O2'-C2'-C3'	2.92	121.19	111.83

There are no chirality outliers.

There are no torsion outliers.

There are no ring outliers.

4 monomers are involved in 9 short contacts:

Mol	Chain	Res	Type	Clashes	Symm-Clashes
3	A	293	SAM	2	0
3	B	1293	SAM	2	0
3	C	2293	SAM	3	0
3	D	3293	SAM	2	0

## 5.7 Other polymers [i](#)

There are no such residues in this entry.

## 5.8 Polymer linkage issues [i](#)

The following chains have linkage breaks:

Mol	Chain	Number of breaks
1	B	1
1	A	1
1	D	1
1	C	1

All chain breaks are listed below:

Model	Chain	Residue-1	Atom-1	Residue-2	Atom-2	Distance (Å)
1	C	17:ILE	C	18:PRO	N	1.72
1	A	17:ILE	C	18:PRO	N	1.69
1	D	17:ILE	C	18:PRO	N	1.65
1	B	17:ILE	C	18:PRO	N	1.62

## 6 Fit of model and data ⓘ

### 6.1 Protein, DNA and RNA chains ⓘ

EDS was not executed - this section is therefore empty.

### 6.2 Non-standard residues in protein, DNA, RNA chains ⓘ

EDS was not executed - this section is therefore empty.

### 6.3 Carbohydrates ⓘ

EDS was not executed - this section is therefore empty.

### 6.4 Ligands ⓘ

EDS was not executed - this section is therefore empty.

### 6.5 Other polymers ⓘ

EDS was not executed - this section is therefore empty.