



wwPDB X-ray Structure Validation Summary Report ⓘ

Feb 14, 2017 – 07:00 am GMT

PDB ID : 3NC6
Title : CYP134A1 1-phenylimidazole bound structure
Authors : Cryle, M.J.; Schlichting, I.
Deposited on : 2010-06-04
Resolution : 3.10 Å(reported)

This is a wwPDB X-ray Structure Validation Summary Report for a publicly released PDB entry.

We welcome your comments at validation@mail.wwpdb.org

A user guide is available at

<http://wwpdb.org/validation/2016/XrayValidationReportHelp>

with specific help available everywhere you see the ⓘ symbol.

The following versions of software and data (see [references ⓘ](#)) were used in the production of this report:

MolProbity : 4.02b-467
Mogul : 1.7.2 (RC1), CSD as538be (2017)
Xtriage (Phenix) : 1.9-1692
EDS : trunk28620
Percentile statistics : 20161228.v01 (using entries in the PDB archive December 28th 2016)
Refmac : 5.8.0135
CCP4 : 6.5.0
Ideal geometry (proteins) : Engh & Huber (2001)
Ideal geometry (DNA, RNA) : Parkinson et al. (1996)
Validation Pipeline (wwPDB-VP) : recalc28949

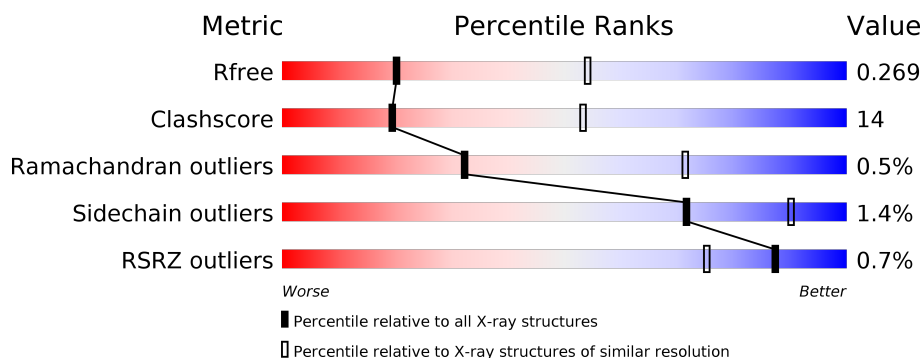
1 Overall quality at a glance

The following experimental techniques were used to determine the structure:

X-RAY DIFFRACTION

The reported resolution of this entry is 3.10 Å.

Percentile scores (ranging between 0-100) for global validation metrics of the entry are shown in the following graphic. The table shows the number of entries on which the scores are based.



Metric	Whole archive (#Entries)	Similar resolution (#Entries, resolution range(Å))
R_{free}	100719	1001 (3.12-3.08)
Clashscore	112137	1099 (3.12-3.08)
Ramachandran outliers	110173	1057 (3.12-3.08)
Sidechain outliers	110143	1057 (3.12-3.08)
RSRZ outliers	101464	1006 (3.12-3.08)

The table below summarises the geometric issues observed across the polymeric chains and their fit to the electron density. The red, orange, yellow and green segments on the lower bar indicate the fraction of residues that contain outliers for ≥ 3 , 2, 1 and 0 types of geometric quality criteria. A grey segment represents the fraction of residues that are not modelled. The numeric value for each fraction is indicated below the corresponding segment, with a dot representing fractions $\leq 5\%$. The upper red bar (where present) indicates the fraction of residues that have poor fit to the electron density. The numeric value is given above the bar.

Mol	Chain	Length	Quality of chain
1	A	441	<div> <div style="width: 100%; height: 10px; position: relative;"> <div style="position: absolute; top: -10px; left: 0;">%</div> <div style="position: absolute; top: 0; left: 0; width: 100%; height: 100%; background: linear-gradient(to right, red 1%, orange 1%, yellow 1%, green 61%, yellow 22%, grey 15%);"></div> <div style="position: absolute; bottom: 0; left: 0; width: 100%; text-align: center;"> 61% 22% • 15% </div> </div> </div>
1	B	441	<div> <div style="width: 100%; height: 10px; position: relative;"> <div style="position: absolute; top: 0; left: 0; width: 100%; height: 100%; background: linear-gradient(to right, green 69%, yellow 18%, grey 12%);"></div> <div style="position: absolute; bottom: 0; left: 0; width: 100%; text-align: center;"> 69% 18% • 12% </div> </div> </div>

The following table lists non-polymeric compounds, carbohydrate monomers and non-standard residues in protein, DNA, RNA chains that are outliers for geometric or electron-density-fit criteria:

Mol	Type	Chain	Res	Chirality	Geometry	Clashes	Electron density
4	MG	A	408	-	-	-	X

2 Entry composition [i](#)

There are 5 unique types of molecules in this entry. The entry contains 6150 atoms, of which 0 are hydrogens and 0 are deuteriums.

In the tables below, the ZeroOcc column contains the number of atoms modelled with zero occupancy, the AltConf column contains the number of residues with at least one atom in alternate conformation and the Trace column contains the number of residues modelled with at most 2 atoms.

- Molecule 1 is a protein called Cytochrome P450 cypX.

Mol	Chain	Residues	Atoms					ZeroOcc	AltConf	Trace
1	A	374	Total	C	N	O	S	0	1	0
			2968	1885	511	558	14			
1	B	389	Total	C	N	O	S	0	0	0
			3068	1943	527	582	16			

There are 74 discrepancies between the modelled and reference sequences:

Chain	Residue	Modelled	Actual	Comment	Reference
A	-35	MET	-	EXPRESSION TAG	UNP O34926
A	-34	GLY	-	EXPRESSION TAG	UNP O34926
A	-33	SER	-	EXPRESSION TAG	UNP O34926
A	-32	SER	-	EXPRESSION TAG	UNP O34926
A	-31	HIS	-	EXPRESSION TAG	UNP O34926
A	-30	HIS	-	EXPRESSION TAG	UNP O34926
A	-29	HIS	-	EXPRESSION TAG	UNP O34926
A	-28	HIS	-	EXPRESSION TAG	UNP O34926
A	-27	HIS	-	EXPRESSION TAG	UNP O34926
A	-26	HIS	-	EXPRESSION TAG	UNP O34926
A	-25	SER	-	EXPRESSION TAG	UNP O34926
A	-24	SER	-	EXPRESSION TAG	UNP O34926
A	-23	GLY	-	EXPRESSION TAG	UNP O34926
A	-22	LEU	-	EXPRESSION TAG	UNP O34926
A	-21	VAL	-	EXPRESSION TAG	UNP O34926
A	-20	PRO	-	EXPRESSION TAG	UNP O34926
A	-19	ARG	-	EXPRESSION TAG	UNP O34926
A	-18	GLY	-	EXPRESSION TAG	UNP O34926
A	-17	SER	-	EXPRESSION TAG	UNP O34926
A	-16	HIS	-	EXPRESSION TAG	UNP O34926
A	-15	MET	-	EXPRESSION TAG	UNP O34926
A	-14	ALA	-	EXPRESSION TAG	UNP O34926
A	-13	SER	-	EXPRESSION TAG	UNP O34926
A	-12	MET	-	EXPRESSION TAG	UNP O34926
A	-11	THR	-	EXPRESSION TAG	UNP O34926

Continued on next page...

Continued from previous page...

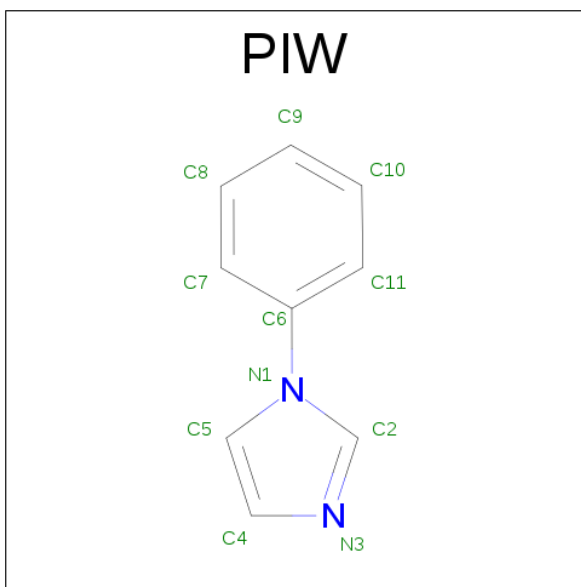
Chain	Residue	Modelled	Actual	Comment	Reference
A	-10	GLY	-	EXPRESSION TAG	UNP O34926
A	-9	GLY	-	EXPRESSION TAG	UNP O34926
A	-8	GLN	-	EXPRESSION TAG	UNP O34926
A	-7	GLN	-	EXPRESSION TAG	UNP O34926
A	-6	MET	-	EXPRESSION TAG	UNP O34926
A	-5	GLY	-	EXPRESSION TAG	UNP O34926
A	-4	ARG	-	EXPRESSION TAG	UNP O34926
A	-3	GLY	-	EXPRESSION TAG	UNP O34926
A	-2	SER	-	EXPRESSION TAG	UNP O34926
A	-1	GLU	-	EXPRESSION TAG	UNP O34926
A	0	PHE	-	EXPRESSION TAG	UNP O34926
A	356	THR	ALA	ENGINEERED MUTATION	UNP O34926
B	-35	MET	-	EXPRESSION TAG	UNP O34926
B	-34	GLY	-	EXPRESSION TAG	UNP O34926
B	-33	SER	-	EXPRESSION TAG	UNP O34926
B	-32	SER	-	EXPRESSION TAG	UNP O34926
B	-31	HIS	-	EXPRESSION TAG	UNP O34926
B	-30	HIS	-	EXPRESSION TAG	UNP O34926
B	-29	HIS	-	EXPRESSION TAG	UNP O34926
B	-28	HIS	-	EXPRESSION TAG	UNP O34926
B	-27	HIS	-	EXPRESSION TAG	UNP O34926
B	-26	HIS	-	EXPRESSION TAG	UNP O34926
B	-25	SER	-	EXPRESSION TAG	UNP O34926
B	-24	SER	-	EXPRESSION TAG	UNP O34926
B	-23	GLY	-	EXPRESSION TAG	UNP O34926
B	-22	LEU	-	EXPRESSION TAG	UNP O34926
B	-21	VAL	-	EXPRESSION TAG	UNP O34926
B	-20	PRO	-	EXPRESSION TAG	UNP O34926
B	-19	ARG	-	EXPRESSION TAG	UNP O34926
B	-18	GLY	-	EXPRESSION TAG	UNP O34926
B	-17	SER	-	EXPRESSION TAG	UNP O34926
B	-16	HIS	-	EXPRESSION TAG	UNP O34926
B	-15	MET	-	EXPRESSION TAG	UNP O34926
B	-14	ALA	-	EXPRESSION TAG	UNP O34926
B	-13	SER	-	EXPRESSION TAG	UNP O34926
B	-12	MET	-	EXPRESSION TAG	UNP O34926
B	-11	THR	-	EXPRESSION TAG	UNP O34926
B	-10	GLY	-	EXPRESSION TAG	UNP O34926
B	-9	GLY	-	EXPRESSION TAG	UNP O34926
B	-8	GLN	-	EXPRESSION TAG	UNP O34926
B	-7	GLN	-	EXPRESSION TAG	UNP O34926
B	-6	MET	-	EXPRESSION TAG	UNP O34926

Continued on next page...

Chain	Residue	Modelled	Actual	Comment	Reference
B	-5	GLY	-	EXPRESSION TAG	UNP O34926
B	-4	ARG	-	EXPRESSION TAG	UNP O34926
B	-3	GLY	-	EXPRESSION TAG	UNP O34926
B	-2	SER	-	EXPRESSION TAG	UNP O34926
B	-1	GLU	-	EXPRESSION TAG	UNP O34926
B	0	PHE	-	EXPRESSION TAG	UNP O34926
B	356	THR	ALA	ENGINEERED MUTATION	UNP O34926

- # HEM
-
- The diagram illustrates the chemical structure of Hemoglobin (HEM). It features a central iron atom (Fe) coordinated by four nitrogen atoms (NA, NB, NC, ND) within a porphyrin-like ring. The ring is substituted with various side chains, including vinyl groups (C8A, C8B, C8C, C8D), methyl groups (C5A, C5B, C5C, C5D), and propionate groups (C3A, C3B, C3C, C3D). The structure is labeled with various amino acid residues and side chains, such as CAA, CBA, CAD, CBD, CMA, C3A, C2A, C1A, C4A, C4B, C1B, C2B, C3B, C4B, C5B, C6B, C7B, C8B, C9B, C10B, C11B, C12B, C13B, C14B, C15B, C16B, C17B, C18B, C19B, C20B, C21B, C22B, C23B, C24B, C25B, C26B, C27B, C28B, C29B, C30B, C31B, C32B, C33B, C34B, C35B, C36B, C37B, C38B, C39B, C40B, C41B, C42B, C43B, C44B, C45B, C46B, C47B, C48B, C49B, C50B, C51B, C52B, C53B, C54B, C55B, C56B, C57B, C58B, C59B, C60B, C61B, C62B, C63B, C64B, C65B, C66B, C67B, C68B, C69B, C70B, C71B, C72B, C73B, C74B, C75B, C76B, C77B, C78B, C79B, C80B, C81B, C82B, C83B, C84B, C85B, C86B, C87B, C88B, C89B, C90B, C91B, C92B, C93B, C94B, C95B, C96B, C97B, C98B, C99B, C100B, C101B, C102B, C103B, C104B, C105B, C106B, C107B, C108B, C109B, C110B, C111B, C112B, C113B, C114B, C115B, C116B, C117B, C118B, C119B, C120B, C121B, C122B, C123B, C124B, C125B, C126B, C127B, C128B, C129B, C130B, C131B, C132B, C133B, C134B, C135B, C136B, C137B, C138B, C139B, C140B, C141B, C142B, C143B, C144B, C145B, C146B, C147B, C148B, C149B, C150B, C151B, C152B, C153B, C154B, C155B, C156B, C157B, C158B, C159B, C160B, C161B, C162B, C163B, C164B, C165B, C166B, C167B, C168B, C169B, C170B, C171B, C172B, C173B, C174B, C175B, C176B, C177B, C178B, C179B, C180B, C181B, C182B, C183B, C184B, C185B, C186B, C187B, C188B, C189B, C190B, C191B, C192B, C193B, C194B, C195B, C196B, C197B, C198B, C199B, C200B, C201B, C202B, C203B, C204B, C205B, C206B, C207B, C208B, C209B, C210B, C211B, C212B, C213B, C214B, C215B, C216B, C217B, C218B, C219B, C220B, C221B, C222B, C223B, C224B, C225B, C226B, C227B, C228B, C229B, C230B, C231B, C232B, C233B, C234B, C235B, C236B, C237B, C238B, C239B, C240B, C241B, C242B, C243B, C244B, C245B, C246B, C247B, C248B, C249B, C250B, C251B, C252B, C253B, C254B, C255B, C256B, C257B, C258B, C259B, C260B, C261B, C262B, C263B, C264B, C265B, C266B, C267B, C268B, C269B, C270B, C271B, C272B, C273B, C274B, C275B, C276B, C277B, C278B, C279B, C280B, C281B, C282B, C283B, C284B, C285B, C286B, C287B, C288B, C289B, C290B, C291B, C292B, C293B, C294B, C295B, C296B, C297B, C298B, C299B, C300B, C301B, C302B, C303B, C304B, C305B, C306B, C307B, C308B, C309B, C310B, C311B, C312B, C313B, C314B, C315B, C316B, C317B, C318B, C319B, C320B, C321B, C322B, C323B, C324B, C325B, C326B, C327B, C328B, C329B, C330B, C331B, C332B, C333B, C334B, C335B, C336B, C337B, C338B, C339B, C340B, C341B, C342B, C343B, C344B, C345B, C346B, C347B, C348B, C349B, C350B, C351B, C352B, C353B, C354B, C355B, C356B, C357B, C358B, C359B, C360B, C361B, C362B, C363B, C364B, C365B, C366B, C367B, C368B, C369B, C370B, C371B, C372B, C373B, C374B, C375B, C376B, C377B, C378B, C379B, C380B, C381B, C382B, C383B, C384B, C385B, C386B, C387B, C388B, C389B, C390B, C391B, C392B, C393B, C394B, C395B, C396B, C397B, C398B, C399B, C400B, C401B, C402B, C403B, C404B, C405B, C406B, C407B, C408B, C409B, C410B, C411B, C412B, C413B, C414B, C415B, C416B, C417B, C418B, C419B, C420B, C421B, C422B, C423B, C424B, C425B, C426B, C427B, C428B, C429B, C430B, C431B, C432B, C433B, C434B, C435B, C436B, C437B, C438B, C439B, C440B, C441B, C442B, C443B, C444B, C445B, C446B, C447B, C448B, C449B, C450B, C451B, C452B, C453B, C454B, C455B, C456B, C457B, C458B, C459B, C460B, C461B, C462B, C463B, C464B, C465B, C466B, C467B, C468B, C469B, C470B, C471B, C472B, C473B, C474B, C475B, C476B, C477B, C478B, C479B, C480B, C481B, C482B, C483B, C484B, C485B, C486B, C487B, C488B, C489B, C490B, C491B, C492B, C493B, C494B, C495B, C496B, C497B, C498B, C499B, C500B, C501B, C502B, C503B, C504B, C505B, C506B, C507B, C508B, C509B, C510B, C511B, C512B, C513B, C514B, C515B, C516B, C517B, C518B, C519B, C520B, C521B, C522B, C523B, C524B, C525B, C526B, C527B, C528B, C529B, C530B, C531B, C532B, C533B, C534B, C535B, C536B, C537B, C538B, C539B, C540B, C541B, C542B, C543B, C544B, C545B, C546B, C547B, C548B, C549B, C550B, C551B, C552B, C553B, C554B, C555B, C556B, C557B, C558B, C559B, C560B, C561B, C562B, C563B, C564B, C565B, C566B, C567B, C568B, C569B, C570B, C571B, C572B, C573B, C574B, C575B, C576B, C577B, C578B, C579B, C580B, C581B, C582B, C583B, C584B, C585B, C586B, C587B, C588B, C589B, C590B, C591B, C592B, C593B, C594B, C595B, C596B, C597B, C598B, C599B, C600B, C601B, C602B, C603B, C604B, C605B, C606B, C607B, C608B, C609B, C610B, C611B, C612B, C613B, C614B, C615B, C616B, C617B, C618B, C619B, C620B, C621B, C622B, C623B, C624B, C625B, C626B, C627B, C628B, C629B, C630B, C631B, C632B, C633B, C634B, C635B, C636B, C637B, C638B, C639B, C640B, C641B, C642B, C643B, C644B, C645B, C646B, C647B, C648B, C649B, C650B, C651B, C652B, C653B, C654B, C655B, C656B, C657B, C658B, C659B, C660B, C661B, C662B, C663B, C664B, C665B, C

- Molecule 3 is 1-PHENYL-1H-IMIDAZOLE (three-letter code: PIW) (formula: $C_9H_8N_2$).



Mol	Chain	Residues	Atoms			ZeroOcc	AltConf
3	A	1	Total	C	N	0	0
			11	9	2		
3	B	1	Total	C	N	0	0
			11	9	2		

- Molecule 4 is MAGNESIUM ION (three-letter code: MG) (formula: Mg).

Mol	Chain	Residues	Atoms		ZeroOcc	AltConf
4	A	1	Total	Mg	0	0
			1	1		

- Molecule 5 is water.

Mol	Chain	Residues	Atoms		ZeroOcc	AltConf
5	A	5	Total	O	0	0
			5	5		

- Molecule 1: Cytochrome P450 cypX



4 Data and refinement statistics

Property	Value	Source
Space group	P 21 21 21	Depositor
Cell constants a, b, c, α , β , γ	64.95Å 106.90Å 142.93Å 90.00° 90.00° 90.00°	Depositor
Resolution (Å)	43.84 – 3.10 43.84 – 3.10	Depositor EDS
% Data completeness (in resolution range)	100.0 (43.84-3.10) 98.9 (43.84-3.10)	Depositor EDS
R_{merge}	0.11	Depositor
R_{sym}	(Not available)	Depositor
$\langle I/\sigma(I) \rangle$ ¹	3.62 (at 3.12Å)	Xtriage
Refinement program	REFMAC 5.5.0070	Depositor
R, R_{free}	0.214 , 0.278 0.211 , 0.269	Depositor DCC
R_{free} test set	912 reflections (5.19%)	DCC
Wilson B-factor (Å ²)	66.5	Xtriage
Anisotropy	0.561	Xtriage
Bulk solvent k_{sol} (e/Å ³), B_{sol} (Å ²)	0.33 , 53.3	EDS
L-test for twinning ²	$\langle L \rangle = 0.50$, $\langle L^2 \rangle = 0.34$	Xtriage
Estimated twinning fraction	No twinning to report.	Xtriage
F_o, F_c correlation	0.93	EDS
Total number of atoms	6150	wwPDB-VP
Average B, all atoms (Å ²)	62.0	wwPDB-VP

Xtriage's analysis on translational NCS is as follows: *The analyses of the Patterson function reveals a significant off-origin peak that is 21.32 % of the origin peak, indicating pseudo translational symmetry. The chance of finding a peak of this or larger height randomly in a structure without pseudo translational symmetry is equal to 7.1894e-03. The detected translational NCS is most likely also responsible for the elevated intensity ratio.*

¹Intensities estimated from amplitudes.

²Theoretical values of $\langle |L| \rangle$, $\langle L^2 \rangle$ for acentric reflections are 0.5, 0.333 respectively for untwinned datasets, and 0.375, 0.2 for perfectly twinned datasets.

5 Model quality ⓘ

5.1 Standard geometry ⓘ

Bond lengths and bond angles in the following residue types are not validated in this section: HEM, MG, PIW

The Z score for a bond length (or angle) is the number of standard deviations the observed value is removed from the expected value. A bond length (or angle) with $|Z| > 5$ is considered an outlier worth inspection. RMSZ is the root-mean-square of all Z scores of the bond lengths (or angles).

Mol	Chain	Bond lengths		Bond angles	
		RMSZ	$\# Z > 5$	RMSZ	$\# Z > 5$
1	A	0.63	1/3030 (0.0%)	0.72	0/4105
1	B	0.57	1/3129 (0.0%)	0.74	3/4239 (0.1%)
All	All	0.60	2/6159 (0.0%)	0.73	3/8344 (0.0%)

All (2) bond length outliers are listed below:

Mol	Chain	Res	Type	Atoms	Z	Observed(Å)	Ideal(Å)
1	B	19	PRO	N-CD	5.70	1.55	1.47
1	A	229	ASN	CG-OD1	5.16	1.35	1.24

All (3) bond angle outliers are listed below:

Mol	Chain	Res	Type	Atoms	Z	Observed(°)	Ideal(°)
1	B	210	THR	N-CA-C	5.42	125.64	111.00
1	B	18	ASN	CB-CA-C	5.17	120.75	110.40
1	B	90	ARG	C-N-CA	5.01	134.23	121.70

There are no chirality outliers.

There are no planarity outliers.

5.2 Too-close contacts ⓘ

In the following table, the Non-H and H(model) columns list the number of non-hydrogen atoms and hydrogen atoms in the chain respectively. The H(added) column lists the number of hydrogen atoms added and optimized by MolProbity. The Clashes column lists the number of clashes within the asymmetric unit, whereas Symm-Clashes lists symmetry related clashes.

Mol	Chain	Non-H	H(model)	H(added)	Clashes	Symm-Clashes
1	A	2968	0	2945	96	0

Continued on next page...

Continued from previous page...

Mol	Chain	Non-H	H(model)	H(added)	Clashes	Symm-Clashes
1	B	3068	0	3027	79	0
2	A	43	0	30	6	0
2	B	43	0	30	1	0
3	A	11	0	8	2	0
3	B	11	0	8	3	0
4	A	1	0	0	0	0
5	A	5	0	0	3	0
All	All	6150	0	6048	176	0

The all-atom clashscore is defined as the number of clashes found per 1000 atoms (including hydrogen atoms). The all-atom clashscore for this structure is 14.

The worst 5 of 176 close contacts within the same asymmetric unit are listed below, sorted by their clash magnitude.

Atom-1	Atom-2	Interatomic distance (Å)	Clash overlap (Å)
1:B:90:ARG:CB	1:B:91:ILE:HG13	1.50	1.39
1:A:370:VAL:HG13	1:A:374:MET:CE	1.71	1.19
1:B:90:ARG:H	1:B:91:ILE:HD12	1.05	1.10
1:A:20:TYR:HA	1:A:23:PHE:CD2	1.87	1.09
1:A:11:LEU:HD11	1:A:168:ILE:HG21	1.22	1.07

There are no symmetry-related clashes.

5.3 Torsion angles [i](#)

5.3.1 Protein backbone [i](#)

In the following table, the Percentiles column shows the percent Ramachandran outliers of the chain as a percentile score with respect to all X-ray entries followed by that with respect to entries of similar resolution.

The Analysed column shows the number of residues for which the backbone conformation was analysed, and the total number of residues.

Mol	Chain	Analysed	Favoured	Allowed	Outliers	Percentiles	
1	A	369/441 (84%)	330 (89%)	39 (11%)	0	100	100
1	B	385/441 (87%)	353 (92%)	28 (7%)	4 (1%)	18	57
All	All	754/882 (86%)	683 (91%)	67 (9%)	4 (0%)	32	71

All (4) Ramachandran outliers are listed below:

Mol	Chain	Res	Type
1	B	5	ILE
1	B	91	ILE
1	B	19	PRO
1	B	294	GLY

5.3.2 Protein sidechains ⓘ

In the following table, the Percentiles column shows the percent sidechain outliers of the chain as a percentile score with respect to all X-ray entries followed by that with respect to entries of similar resolution.

The Analysed column shows the number of residues for which the sidechain conformation was analysed, and the total number of residues.

Mol	Chain	Analysed	Rotameric	Outliers	Percentiles	
1	A	327/380 (86%)	321 (98%)	6 (2%)	64	87
1	B	336/380 (88%)	333 (99%)	3 (1%)	82	93
All	All	663/760 (87%)	654 (99%)	9 (1%)	71	90

5 of 9 residues with a non-rotameric sidechain are listed below:

Mol	Chain	Res	Type
1	A	378	ARG
1	B	281	GLN
1	B	26	LEU
1	A	352	ASN
1	A	384	CYS

Some sidechains can be flipped to improve hydrogen bonding and reduce clashes. All (2) such sidechains are listed below:

Mol	Chain	Res	Type
1	A	54	GLN
1	A	199	ASN

5.3.3 RNA ⓘ

There are no RNA molecules in this entry.

5.4 Non-standard residues in protein, DNA, RNA chains [i](#)

There are no non-standard protein/DNA/RNA residues in this entry.

5.5 Carbohydrates [i](#)

There are no carbohydrates in this entry.

5.6 Ligand geometry [i](#)

Of 5 ligands modelled in this entry, 1 is monoatomic - leaving 4 for Mogul analysis.

In the following table, the Counts columns list the number of bonds (or angles) for which Mogul statistics could be retrieved, the number of bonds (or angles) that are observed in the model and the number of bonds (or angles) that are defined in the chemical component dictionary. The Link column lists molecule types, if any, to which the group is linked. The Z score for a bond length (or angle) is the number of standard deviations the observed value is removed from the expected value. A bond length (or angle) with $|Z| > 2$ is considered an outlier worth inspection. RMSZ is the root-mean-square of all Z scores of the bond lengths (or angles).

Mol	Type	Chain	Res	Link	Bond lengths			Bond angles		
					Counts	RMSZ	# $ Z > 2$	Counts	RMSZ	# $ Z > 2$
2	HEM	A	406	1	28,50,50	2.34	7 (25%)	17,82,82	1.95	3 (17%)
3	PIW	A	407	-	11,12,12	2.19	3 (27%)	12,15,15	2.52	6 (50%)
2	HEM	B	406	1	28,50,50	2.39	7 (25%)	17,82,82	1.77	3 (17%)
3	PIW	B	407	-	11,12,12	2.06	2 (18%)	12,15,15	2.72	6 (50%)

In the following table, the Chirals column lists the number of chiral outliers, the number of chiral centers analysed, the number of these observed in the model and the number defined in the chemical component dictionary. Similar counts are reported in the Torsion and Rings columns. '-' means no outliers of that kind were identified.

Mol	Type	Chain	Res	Link	Chirals	Torsions	Rings
2	HEM	A	406	1	-	0/6/54/54	0/0/8/8
3	PIW	A	407	-	-	0/4/4/4	0/2/2/2
2	HEM	B	406	1	-	0/6/54/54	0/0/8/8
3	PIW	B	407	-	-	0/4/4/4	0/2/2/2

The worst 5 of 19 bond length outliers are listed below:

Mol	Chain	Res	Type	Atoms	Z	Observed(Å)	Ideal(Å)
2	B	406	HEM	C3C-C2C	-7.31	1.30	1.40
2	A	406	HEM	C3C-C2C	-5.46	1.33	1.40

Continued on next page...

Continued from previous page...

Mol	Chain	Res	Type	Atoms	Z	Observed(Å)	Ideal(Å)
3	A	407	PIW	C6-N1	-5.32	1.35	1.45
3	B	407	PIW	C6-N1	-5.07	1.36	1.45
2	B	406	HEM	C3B-C2B	-5.02	1.33	1.40

The worst 5 of 18 bond angle outliers are listed below:

Mol	Chain	Res	Type	Atoms	Z	Observed(°)	Ideal(°)
2	A	406	HEM	CBA-CAA-C2A	-5.09	102.75	112.48
3	B	407	PIW	C7-C6-C11	-4.73	114.03	121.28
2	B	406	HEM	CAA-CBA-CGA	-4.53	104.93	112.66
3	A	407	PIW	C7-C6-C11	-4.18	114.87	121.28
2	A	406	HEM	CAD-CBD-CGD	-4.09	105.68	112.66

There are no chirality outliers.

There are no torsion outliers.

There are no ring outliers.

4 monomers are involved in 11 short contacts:

Mol	Chain	Res	Type	Clashes	Symm-Clashes
2	A	406	HEM	6	0
3	A	407	PIW	2	0
2	B	406	HEM	1	0
3	B	407	PIW	3	0

5.7 Other polymers [i](#)

There are no such residues in this entry.

5.8 Polymer linkage issues [i](#)

There are no chain breaks in this entry.

6 Fit of model and data [i](#)

6.1 Protein, DNA and RNA chains [i](#)

In the following table, the column labelled ‘#RSRZ> 2’ contains the number (and percentage) of RSRZ outliers, followed by percent RSRZ outliers for the chain as percentile scores relative to all X-ray entries and entries of similar resolution. The OWAB column contains the minimum, median, 95th percentile and maximum values of the occupancy-weighted average B-factor per residue. The column labelled ‘Q< 0.9’ lists the number of (and percentage) of residues with an average occupancy less than 0.9.

Mol	Chain	Analysed	<RSRZ>	#RSRZ>2		OWAB(Å ²)	Q<0.9
1	A	374/441 (84%)	-0.10	3 (0%)	86 71	34, 59, 109, 162	1 (0%)
1	B	389/441 (88%)	-0.16	2 (0%)	90 80	34, 57, 92, 114	1 (0%)
All	All	763/882 (86%)	-0.13	5 (0%)	87 75	34, 59, 99, 162	2 (0%)

All (5) RSRZ outliers are listed below:

Mol	Chain	Res	Type	RSRZ
1	B	213	TYR	3.4
1	B	214	GLU	2.9
1	A	303	ILE	2.5
1	A	198	VAL	2.4
1	A	295	GLY	2.2

6.2 Non-standard residues in protein, DNA, RNA chains [i](#)

There are no non-standard protein/DNA/RNA residues in this entry.

6.3 Carbohydrates [i](#)

There are no carbohydrates in this entry.

6.4 Ligands [i](#)

In the following table, the Atoms column lists the number of modelled atoms in the group and the number defined in the chemical component dictionary. LLDF column lists the quality of electron density of the group with respect to its neighbouring residues in protein, DNA or RNA chains. The B-factors column lists the minimum, median, 95th percentile and maximum values of B factors of atoms in the group. The column labelled ‘Q< 0.9’ lists the number of atoms with occupancy less than 0.9.

Mol	Type	Chain	Res	Atoms	RSCC	RSR	LLDF	B-factors(\AA^2)	Q<0.9
4	MG	A	408	1/1	0.66	1.12	30.63	72,72,72,72	0
3	PIW	A	407	11/11	0.94	0.26	1.86	61,62,63,64	0
2	HEM	A	406	43/43	0.97	0.18	-0.34	17,20,40,42	0
2	HEM	B	406	43/43	0.98	0.19	-0.37	16,19,37,38	0
3	PIW	B	407	11/11	0.97	0.15	-1.71	41,44,47,47	0

6.5 Other polymers [i](#)

There are no such residues in this entry.