



wwPDB X-ray Structure Validation Summary Report ⓘ

Feb 5, 2018 – 11:03 PM EST

PDB ID : 4NC3
Title : Crystal structure of the 5-HT_{2B} receptor solved using serial femtosecond crystallography in lipidic cubic phase.
Authors : Liu, W.; Wacker, D.; Gati, C.; Han, G.W.; James, D.; Wang, D.; Nelson, G.; Weierstall, U.; Katritch, V.; Barty, A.; Zatsepin, N.A.; Li, D.; Messerschmidt, M.; Boutet, S.; Williams, G.J.; Koglin, J.E.; Seibert, M.M.; Wang, C.; Shah, S.T.A.; Basu, S.; Fromme, R.; Kupitz, C.; Rendek, K.N.; Grotjohann, I.; Fromme, P.; Kirian, R.A.; Beyerlein, K.R.; White, T.A.; Chapman, H.N.; Caffrey, M.; Spence, J.C.H.; Stevens, R.C.; Cherezov, V.; GPCR Network (GPCR)
Deposited on : 2013-10-23
Resolution : 2.80 Å(reported)

This is a wwPDB X-ray Structure Validation Summary Report for a publicly released PDB entry.

We welcome your comments at validation@mail.wwpdb.org

A user guide is available at

<http://wwpdb.org/validation/2016/XrayValidationReportHelp>

with specific help available everywhere you see the ⓘ symbol.

The following versions of software and data (see [references ⓘ](#)) were used in the production of this report:

MolProbity	:	4.02b-467
Mogul	:	1.7.2 (RC1), CSD as538be (2017)
Xtriage (Phenix)	:	1.9-1692
EDS	:	rb-20030736
Percentile statistics	:	20161228.v01 (using entries in the PDB archive December 28th 2016)
Refmac	:	5.8.0135
CCP4	:	6.5.0
Ideal geometry (proteins)	:	Engh & Huber (2001)
Ideal geometry (DNA, RNA)	:	Parkinson et al. (1996)

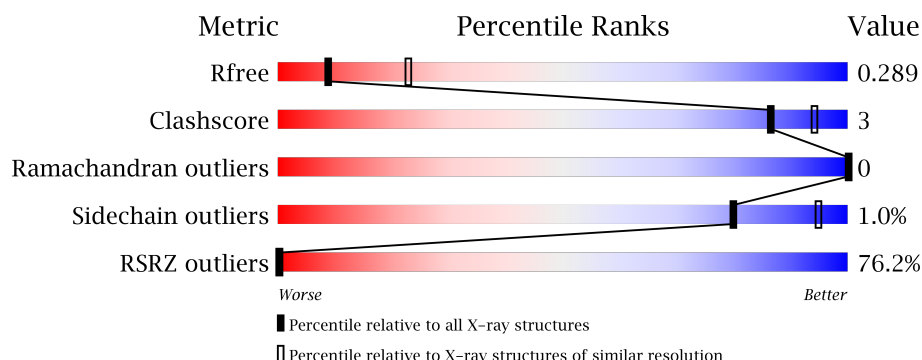
1 Overall quality at a glance

The following experimental techniques were used to determine the structure:

X-RAY DIFFRACTION

The reported resolution of this entry is 2.80 Å.

Percentile scores (ranging between 0-100) for global validation metrics of the entry are shown in the following graphic. The table shows the number of entries on which the scores are based.



Metric	Whole archive (#Entries)	Similar resolution (#Entries, resolution range(Å))
R_{free}	100719	2583 (2.80-2.80)
Clashscore	112137	3033 (2.80-2.80)
Ramachandran outliers	110173	2983 (2.80-2.80)
Sidechain outliers	110143	2985 (2.80-2.80)
RSRZ outliers	101464	2610 (2.80-2.80)

The table below summarises the geometric issues observed across the polymeric chains and their fit to the electron density. The red, orange, yellow and green segments on the lower bar indicate the fraction of residues that contain outliers for ≥ 3 , 2, 1 and 0 types of geometric quality criteria. A grey segment represents the fraction of residues that are not modelled. The numeric value for each fraction is indicated below the corresponding segment, with a dot representing fractions $\leq 5\%$. The upper red bar (where present) indicates the fraction of residues that have poor fit to the electron density. The numeric value is given above the bar.

Mol	Chain	Length	Quality of chain
1	A	430	<div> <div>66%</div> <div> <div></div> <div>80%</div> <div>6%</div> <div>14%</div> </div> </div>

The following table lists non-polymeric compounds, carbohydrate monomers and non-standard residues in protein, DNA, RNA chains that are outliers for geometric or electron-density-fit criteria:

Mol	Type	Chain	Res	Chirality	Geometry	Clashes	Electron density
2	PLM	A	1201	-	-	-	X
5	OLC	A	1204	-	-	-	X
5	OLC	A	1205	-	-	-	X
5	OLC	A	1208	-	-	-	X
6	PEG	A	1206	-	-	-	X
8	OLA	A	1210	-	-	-	X
8	OLA	A	1211	-	-	-	X
8	OLA	A	1212	-	-	-	X
9	DGA	A	1213	-	-	-	X

2 Entry composition

There are 10 unique types of molecules in this entry. The entry contains 3123 atoms, of which 0 are hydrogens and 0 are deuteriums.

In the tables below, the ZeroOcc column contains the number of atoms modelled with zero occupancy, the AltConf column contains the number of residues with at least one atom in alternate conformation and the Trace column contains the number of residues modelled with at most 2 atoms.

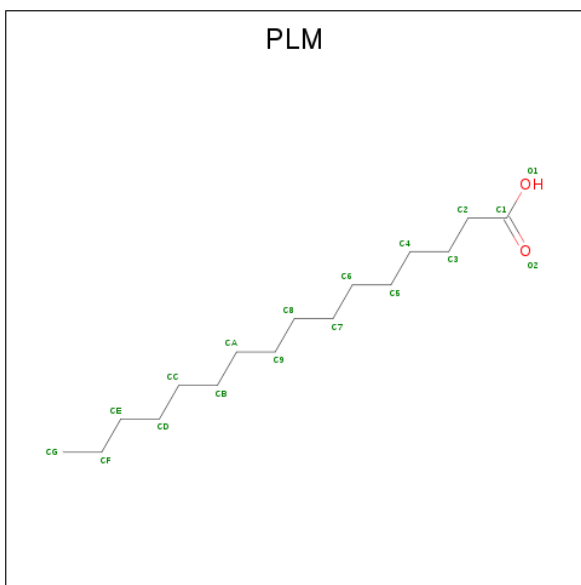
- Molecule 1 is a protein called Chimera protein of human 5-hydroxytryptamine receptor 2B and E. Coli soluble cytochrome b562.

Mol	Chain	Residues	Atoms					ZeroOcc	AltConf	Trace
1	A	370	Total	C	N	O	S	0	1	0
			2839	1867	451	505	16			

There are 23 discrepancies between the modelled and reference sequences:

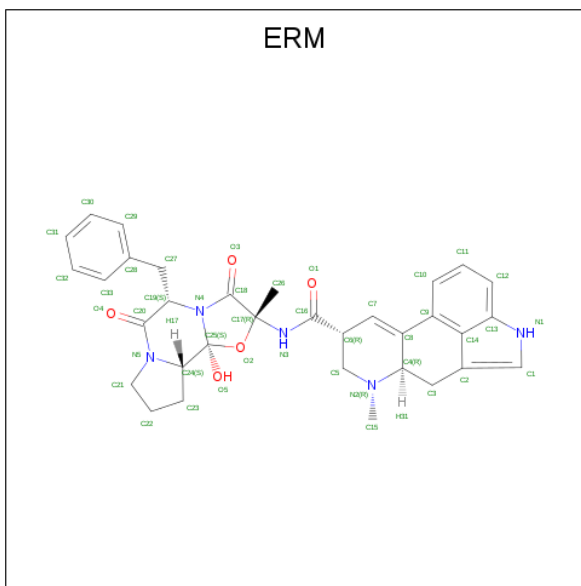
Chain	Residue	Modelled	Actual	Comment	Reference
A	26	ASP	-	EXPRESSION TAG	UNP P41595
A	27	TYR	-	EXPRESSION TAG	UNP P41595
A	28	LYS	-	EXPRESSION TAG	UNP P41595
A	29	ASP	-	EXPRESSION TAG	UNP P41595
A	30	ASP	-	EXPRESSION TAG	UNP P41595
A	31	ASP	-	EXPRESSION TAG	UNP P41595
A	32	ASP	-	EXPRESSION TAG	UNP P41595
A	33	GLY	-	EXPRESSION TAG	UNP P41595
A	34	ALA	-	EXPRESSION TAG	UNP P41595
A	35	PRO	-	EXPRESSION TAG	UNP P41595
A	144	TRP	MET	engineered mutation	UNP P41595
A	1007	TRP	MET	engineered mutation	UNP P0ABE7
A	1102	ILE	HIS	engineered mutation	UNP P0ABE7
A	1106	LEU	ARG	engineered mutation	UNP P0ABE7
A	406	GLY	-	EXPRESSION TAG	UNP P41595
A	407	ARG	-	EXPRESSION TAG	UNP P41595
A	408	PRO	-	EXPRESSION TAG	UNP P41595
A	409	LEU	-	EXPRESSION TAG	UNP P41595
A	410	GLU	-	EXPRESSION TAG	UNP P41595
A	411	VAL	-	EXPRESSION TAG	UNP P41595
A	412	LEU	-	EXPRESSION TAG	UNP P41595
A	413	PHE	-	EXPRESSION TAG	UNP P41595
A	414	GLN	-	EXPRESSION TAG	UNP P41595

- Molecule 2 is PALMITIC ACID (three-letter code: PLM) (formula: C₁₆H₃₂O₂).



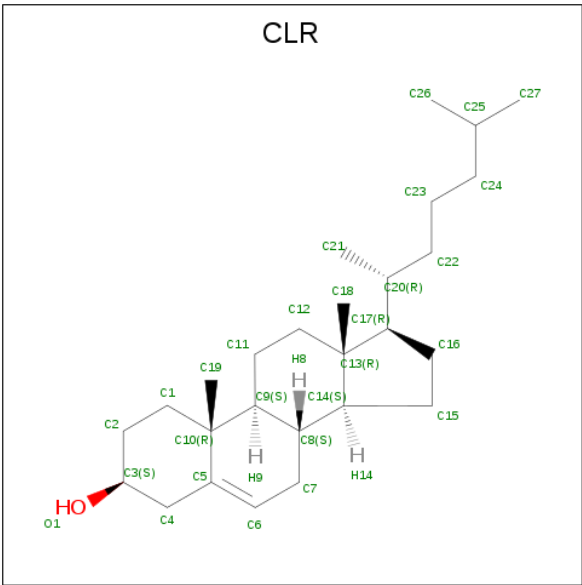
Mol	Chain	Residues	Atoms			ZeroOcc	AltConf
2	A	1	Total	C	O	0	0
			17	16	1		

- Molecule 3 is Ergotamine (three-letter code: ERM) (formula: $C_{33}H_{35}N_5O_5$).



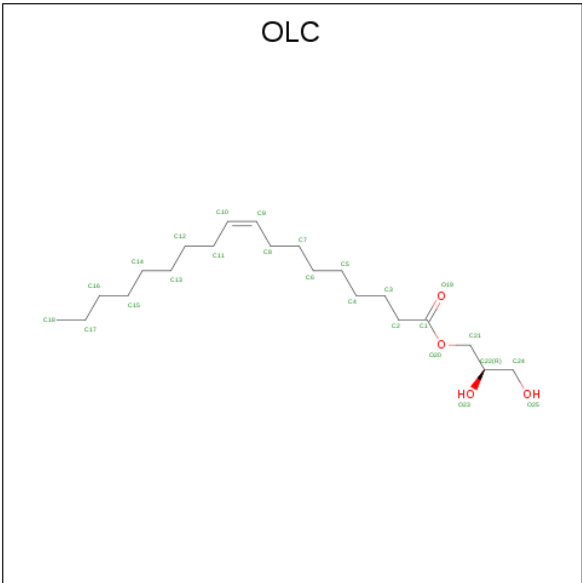
Mol	Chain	Residues	Atoms				ZeroOcc	AltConf
3	A	1	Total	C	N	O	0	0
			43	33	5	5		

- Molecule 4 is CHOLESTEROL (three-letter code: CLR) (formula: $C_{27}H_{46}O$).



Mol	Chain	Residues	Atoms			ZeroOcc	AltConf
4	A	1	Total	C	O	0	0
			28	27	1		

- Molecule 5 is (2R)-2,3-dihydroxypropyl (9Z)-octadec-9-enoate (three-letter code: OLC) (formula: C₂₁H₄₀O₄).



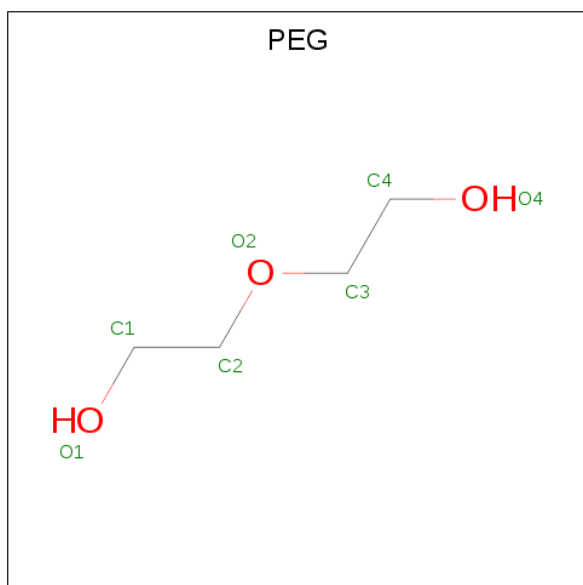
Mol	Chain	Residues	Atoms			ZeroOcc	AltConf
5	A	1	Total	C	O	0	0
			19	15	4		
5	A	1	Total	C	O	0	0
			16	12	4		

Continued on next page...

Continued from previous page...

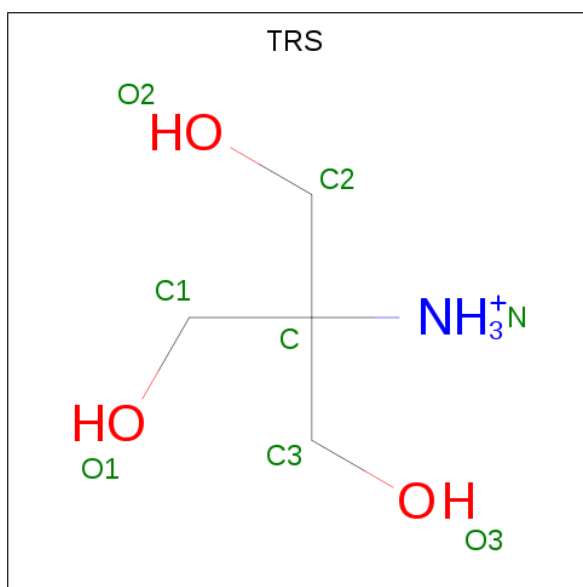
Mol	Chain	Residues	Atoms			ZeroOcc	AltConf
5	A	1	Total	C	O	0	0
			25	21	4		
5	A	1	Total	C	O	0	0
			19	15	4		

- Molecule 6 is DI(HYDROXYETHYL)ETHER (three-letter code: PEG) (formula: $C_4H_{10}O_3$).



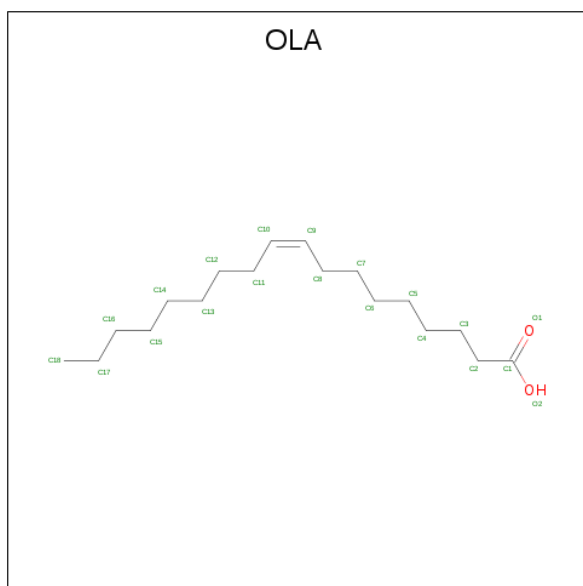
Mol	Chain	Residues	Atoms			ZeroOcc	AltConf
6	A	1	Total	C	O	0	0
			7	4	3		

- Molecule 7 is 2-AMINO-2-HYDROXYMETHYL-PROPANE-1,3-DIOL (three-letter code: TRS) (formula: $C_4H_{12}NO_3$).



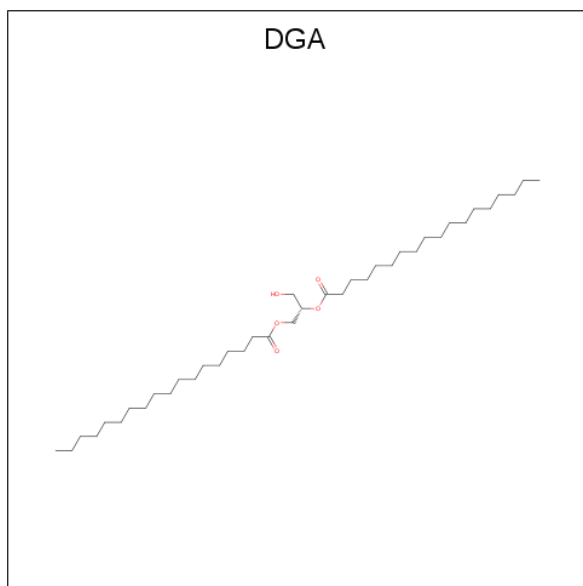
Mol	Chain	Residues	Atoms				ZeroOcc	AltConf
7	A	1	Total	C	N	O	0	0
			8	4	1	3		

- Molecule 8 is OLEIC ACID (three-letter code: OLA) (formula: C₁₈H₃₄O₂).



Mol	Chain	Residues	Atoms			ZeroOcc	AltConf
8	A	1	Total	C		0	0
			10	10			
8	A	1	Total	C	O	0	0
			20	18	2		
8	A	1	Total	C	O	0	0
			19	17	2		

- Molecule 9 is DIACYL GLYCEROL (three-letter code: DGA) (formula: $C_{39}H_{76}O_5$).



Mol	Chain	Residues	Atoms			ZeroOcc	AltConf
9	A	1	Total	C	O	0	0
			26	21	5		
9	A	1	Total	C	O	0	0
			20	15	5		

- Molecule 10 is water.

Mol	Chain	Residues	Atoms		ZeroOcc	AltConf
10	A	7	Total	O	0	0
			7	7		

4 Data and refinement statistics

Property	Value	Source
Space group	C 2 2 21	Depositor
Cell constants a, b, c, α , β , γ	61.50Å 122.20Å 168.50Å 90.00° 90.00° 90.00°	Depositor
Resolution (Å)	34.68 – 2.80 34.68 – 2.50	Depositor EDS
% Data completeness (in resolution range)	99.9 (34.68-2.80) 93.5 (34.68-2.50)	Depositor EDS
R_{merge}	0.10	Depositor
R_{sym}	(Not available)	Depositor
$\langle I/\sigma(I) \rangle$ ¹	0.94 (at 2.51Å)	Xtriage
Refinement program	PHENIX (phenix.refine: 1.8_1069)	Depositor
R, R_{free}	0.227 , 0.270 0.249 , 0.289	Depositor DCC
R_{free} test set	815 reflections (5.35%)	DCC
Wilson B-factor (Å ²)	106.8	Xtriage
Anisotropy	0.053	Xtriage
Bulk solvent k_{sol} (e/Å ³), B_{sol} (Å ²)	0.27 , 87.9	EDS
L-test for twinning ²	$\langle L \rangle = 0.52$, $\langle L^2 \rangle = 0.36$	Xtriage
Estimated twinning fraction	No twinning to report.	Xtriage
F_o, F_c correlation	0.94	EDS
Total number of atoms	3123	wwPDB-VP
Average B, all atoms (Å ²)	98.0	wwPDB-VP

Xtriage's analysis on translational NCS is as follows: *The largest off-origin peak in the Patterson function is 6.11% of the height of the origin peak. No significant pseudotranslation is detected.*

¹Intensities estimated from amplitudes.

²Theoretical values of $\langle |L| \rangle$, $\langle L^2 \rangle$ for acentric reflections are 0.5, 0.333 respectively for untwinned datasets, and 0.375, 0.2 for perfectly twinned datasets.

5 Model quality [i](#)

5.1 Standard geometry [i](#)

Bond lengths and bond angles in the following residue types are not validated in this section: OLA, OLC, DGA, ERM, TRS, PEG, PLM, CLR

The Z score for a bond length (or angle) is the number of standard deviations the observed value is removed from the expected value. A bond length (or angle) with $|Z| > 5$ is considered an outlier worth inspection. RMSZ is the root-mean-square of all Z scores of the bond lengths (or angles).

Mol	Chain	Bond lengths		Bond angles	
		RMSZ	# $ Z > 5$	RMSZ	# $ Z > 5$
1	A	0.22	0/2903	0.36	0/3965

There are no bond length outliers.

There are no bond angle outliers.

There are no chirality outliers.

There are no planarity outliers.

5.2 Too-close contacts [i](#)

In the following table, the Non-H and H(model) columns list the number of non-hydrogen atoms and hydrogen atoms in the chain respectively. The H(added) column lists the number of hydrogen atoms added and optimized by MolProbity. The Clashes column lists the number of clashes within the asymmetric unit, whereas Symm-Clashes lists symmetry related clashes.

Mol	Chain	Non-H	H(model)	H(added)	Clashes	Symm-Clashes
1	A	2839	0	2823	13	0
2	A	17	0	31	0	0
3	A	43	0	35	0	0
4	A	28	0	46	1	0
5	A	79	0	111	3	0
6	A	7	0	9	0	0
7	A	8	0	12	0	0
8	A	49	0	76	0	0
9	A	46	0	56	0	0
10	A	7	0	0	0	0
All	All	3123	0	3199	16	0

The all-atom clashscore is defined as the number of clashes found per 1000 atoms (including hydrogen atoms). The all-atom clashscore for this structure is 3.

The worst 5 of 16 close contacts within the same asymmetric unit are listed below, sorted by their clash magnitude.

Atom-1	Atom-2	Interatomic distance (Å)	Clash overlap (Å)
1:A:128:CYS:SG	1:A:195:ILE:CD1	2.84	0.65
1:A:201:ASN:HB3	1:A:202:PRO:HD3	1.84	0.58
1:A:188:ILE:N	1:A:189:PRO:CD	2.70	0.55
1:A:376:ASN:HB3	1:A:377:PRO:HD3	1.92	0.52
4:A:1203:CLR:H183	4:A:1203:CLR:H212	1.91	0.51

There are no symmetry-related clashes.

5.3 Torsion angles [i](#)

5.3.1 Protein backbone [i](#)

In the following table, the Percentiles column shows the percent Ramachandran outliers of the chain as a percentile score with respect to all X-ray entries followed by that with respect to entries of similar resolution.

The Analysed column shows the number of residues for which the backbone conformation was analysed, and the total number of residues.

Mol	Chain	Analysed	Favoured	Allowed	Outliers	Percentiles	
1	A	365/430 (85%)	352 (96%)	13 (4%)	0	100	100

There are no Ramachandran outliers to report.

5.3.2 Protein sidechains [i](#)

In the following table, the Percentiles column shows the percent sidechain outliers of the chain as a percentile score with respect to all X-ray entries followed by that with respect to entries of similar resolution.

The Analysed column shows the number of residues for which the sidechain conformation was analysed, and the total number of residues.

Mol	Chain	Analysed	Rotameric	Outliers	Percentiles	
1	A	293/371 (79%)	290 (99%)	3 (1%)	80	95

All (3) residues with a non-rotameric sidechain are listed below:

Mol	Chain	Res	Type
1	A	115	ILE
1	A	1018	GLU
1	A	1094	LEU

Some sidechains can be flipped to improve hydrogen bonding and reduce clashes. There are no such sidechains identified.

5.3.3 RNA ⓘ

There are no RNA molecules in this entry.

5.4 Non-standard residues in protein, DNA, RNA chains ⓘ

There are no non-standard protein/DNA/RNA residues in this entry.

5.5 Carbohydrates ⓘ

There are no carbohydrates in this entry.

5.6 Ligand geometry ⓘ

14 ligands are modelled in this entry.

In the following table, the Counts columns list the number of bonds (or angles) for which Mogul statistics could be retrieved, the number of bonds (or angles) that are observed in the model and the number of bonds (or angles) that are defined in the Chemical Component Dictionary. The Link column lists molecule types, if any, to which the group is linked. The Z score for a bond length (or angle) is the number of standard deviations the observed value is removed from the expected value. A bond length (or angle) with $|Z| > 2$ is considered an outlier worth inspection. RMSZ is the root-mean-square of all Z scores of the bond lengths (or angles).

Mol	Type	Chain	Res	Link	Bond lengths			Bond angles		
					Counts	RMSZ	$\# Z > 2$	Counts	RMSZ	$\# Z > 2$
2	PLM	A	1201	1	16,16,17	0.83	1 (6%)	15,15,17	0.56	0
3	ERM	A	1202	-	47,50,50	1.35	9 (19%)	67,79,79	2.05	18 (26%)
4	CLR	A	1203	-	31,31,31	0.64	1 (3%)	48,48,48	1.64	12 (25%)
5	OLC	A	1204	-	18,18,24	1.20	2 (11%)	19,19,25	1.10	1 (5%)
5	OLC	A	1205	-	15,15,24	1.23	2 (13%)	16,16,25	1.13	1 (6%)
6	PEG	A	1206	-	6,6,6	0.59	0	5,5,5	0.25	0
5	OLC	A	1207	-	24,24,24	1.04	2 (8%)	25,25,25	1.16	2 (8%)

Mol	Type	Chain	Res	Link	Bond lengths			Bond angles		
					Counts	RMSZ	# Z > 2	Counts	RMSZ	# Z > 2
5	OLC	A	1208	-	18,18,24	1.19	2 (11%)	19,19,25	1.19	2 (10%)
7	TRS	A	1209	-	7,7,7	0.34	0	9,9,9	0.61	0
8	OLA	A	1210	-	9,9,19	0.95	1 (11%)	8,8,19	0.68	0
8	OLA	A	1211	-	16,19,19	0.74	1 (6%)	15,19,19	0.60	0
8	OLA	A	1212	-	15,18,19	0.75	1 (6%)	14,18,19	0.61	0
9	DGA	A	1213	-	25,25,43	0.94	2 (8%)	27,27,45	1.30	2 (7%)
9	DGA	A	1214	-	19,19,43	1.07	2 (10%)	21,21,45	1.45	2 (9%)

In the following table, the Chirals column lists the number of chiral outliers, the number of chiral centers analysed, the number of these observed in the model and the number defined in the Chemical Component Dictionary. Similar counts are reported in the Torsion and Rings columns. '-' means no outliers of that kind were identified.

Mol	Type	Chain	Res	Link	Chirals	Torsions	Rings
2	PLM	A	1201	1	-	0/14/14/15	0/0/0/0
3	ERM	A	1202	-	-	0/13/87/87	0/7/8/8
4	CLR	A	1203	-	-	0/10/68/68	0/4/4/4
5	OLC	A	1204	-	-	0/18/18/24	0/0/0/0
5	OLC	A	1205	-	-	0/15/15/24	0/0/0/0
6	PEG	A	1206	-	-	0/4/4/4	0/0/0/0
5	OLC	A	1207	-	-	0/24/24/24	0/0/0/0
5	OLC	A	1208	-	-	0/18/18/24	0/0/0/0
7	TRS	A	1209	-	-	0/9/9/9	0/0/0/0
8	OLA	A	1210	-	-	0/7/7/17	0/0/0/0
8	OLA	A	1211	-	-	0/15/17/17	0/0/0/0
8	OLA	A	1212	-	-	0/14/16/17	0/0/0/0
9	DGA	A	1213	-	-	0/27/27/45	0/0/0/0
9	DGA	A	1214	-	-	0/21/21/45	0/0/0/0

The worst 5 of 26 bond length outliers are listed below:

Mol	Chain	Res	Type	Atoms	Z	Observed(Å)	Ideal(Å)
3	A	1202	ERM	C12-C13	-3.83	1.35	1.41
2	A	1201	PLM	O1-C1	-3.15	1.25	1.42
3	A	1202	ERM	C19-N4	-2.49	1.43	1.47
3	A	1202	ERM	C24-N5	-2.11	1.44	1.47
3	A	1202	ERM	C27-C19	-2.02	1.50	1.54

The worst 5 of 40 bond angle outliers are listed below:

Mol	Chain	Res	Type	Atoms	Z	Observed($^{\circ}$)	Ideal($^{\circ}$)
3	A	1202	ERM	O2-C25-N4	-5.70	98.94	104.00
3	A	1202	ERM	C21-N5-C24	-3.64	105.87	111.44
4	A	1203	CLR	C16-C17-C20	-3.45	106.62	112.14
4	A	1203	CLR	C3-C4-C5	-3.42	105.92	111.98
3	A	1202	ERM	C19-N4-C18	-3.19	122.50	125.93

There are no chirality outliers.

There are no torsion outliers.

There are no ring outliers.

3 monomers are involved in 4 short contacts:

Mol	Chain	Res	Type	Clashes	Symm-Clashes
4	A	1203	CLR	1	0
5	A	1204	OLC	1	0
5	A	1207	OLC	2	0

5.7 Other polymers [i](#)

There are no such residues in this entry.

5.8 Polymer linkage issues [i](#)

There are no chain breaks in this entry.

6 Fit of model and data [i](#)

6.1 Protein, DNA and RNA chains [i](#)

In the following table, the column labelled '#RSRZ > 2' contains the number (and percentage) of RSRZ outliers, followed by percent RSRZ outliers for the chain as percentile scores relative to all X-ray entries and entries of similar resolution. The OWAB column contains the minimum, median, 95th percentile and maximum values of the occupancy-weighted average B-factor per residue. The column labelled 'Q < 0.9' lists the number of (and percentage) of residues with an average occupancy less than 0.9.

Mol	Chain	Analysed	<RSRZ>	#RSRZ > 2	OWAB(Å ²)	Q < 0.9
1	A	370/430 (86%)	3.01	282 (76%) 0 0	57, 89, 153, 196	0

The worst 5 of 282 RSRZ outliers are listed below:

Mol	Chain	Res	Type	RSRZ
1	A	163	ALA	11.6
1	A	161	ILE	9.4
1	A	1070	GLY	9.1
1	A	1028	ASP	8.6
1	A	201	ASN	8.5

6.2 Non-standard residues in protein, DNA, RNA chains [i](#)

There are no non-standard protein/DNA/RNA residues in this entry.

6.3 Carbohydrates [i](#)

There are no carbohydrates in this entry.

6.4 Ligands [i](#)

In the following table, the Atoms column lists the number of modelled atoms in the group and the number defined in the chemical component dictionary. LLDF column lists the quality of electron density of the group with respect to its neighbouring residues in protein, DNA or RNA chains. The B-factors column lists the minimum, median, 95th percentile and maximum values of B factors of atoms in the group. The column labelled 'Q < 0.9' lists the number of atoms with occupancy less than 0.9.

Mol	Type	Chain	Res	Atoms	RSCC	RSR	LLDF	B-factors(Å ²)	Q < 0.9
5	OLC	A	1208	19/25	0.16	0.81	5.49	80,111,128,130	0

Continued on next page...

Continued from previous page...

Mol	Type	Chain	Res	Atoms	RSCC	RSR	LLDF	B-factors(\AA^2)	Q<0.9
8	OLA	A	1212	19/20	0.72	0.92	4.99	101,119,128,128	0
8	OLA	A	1211	20/20	0.31	0.66	2.81	77,106,112,113	0
5	OLC	A	1204	19/25	0.68	0.56	2.76	58,88,106,108	0
8	OLA	A	1210	10/20	0.39	0.59	2.54	84,90,101,101	0
2	PLM	A	1201	17/18	0.56	0.54	1.30	100,105,112,113	0
6	PEG	A	1206	7/7	0.37	0.49	1.28	94,100,104,107	0
9	DGA	A	1213	26/44	0.19	0.44	0.93	108,130,145,147	0
5	OLC	A	1205	16/25	0.39	0.47	0.50	70,101,124,125	0
5	OLC	A	1207	25/25	0.46	0.39	-0.16	99,114,150,154	0
9	DGA	A	1214	20/44	0.44	0.39	-0.17	104,127,141,146	0
3	ERM	A	1202	43/43	0.70	0.33	-0.75	56,66,79,85	0
4	CLR	A	1203	28/28	0.68	0.33	-1.84	72,93,103,105	0
7	TRS	A	1209	8/8	0.07	0.58	-	133,136,137,138	0

6.5 Other polymers [i](#)

There are no such residues in this entry.