



Full wwPDB X-ray Structure Validation Report ⓘ

Feb 14, 2017 – 06:43 am GMT

PDB ID : 3NEM
Title : Aspartyl-tRNA synthetase complexed with aspartyl adenylate
Authors : Schmitt, E.; Moras, D.; Moulinier, L.
Deposited on : 2010-06-09
Resolution : 1.89 Å(reported)

This is a Full wwPDB X-ray Structure Validation Report for a publicly released PDB entry.

We welcome your comments at validation@mail.wwpdb.org

A user guide is available at

<http://wwpdb.org/validation/2016/XrayValidationReportHelp>

with specific help available everywhere you see the ⓘ symbol.

The following versions of software and data (see [references ⓘ](#)) were used in the production of this report:

MolProbity : 4.02b-467
Mogul : 1.7.2 (RC1), CSD as538be (2017)
Xtriage (Phenix) : 1.9-1692
EDS : trunk28620
Percentile statistics : 20161228.v01 (using entries in the PDB archive December 28th 2016)
Refmac : 5.8.0135
CCP4 : 6.5.0
Ideal geometry (proteins) : Engh & Huber (2001)
Ideal geometry (DNA, RNA) : Parkinson et al. (1996)
Validation Pipeline (wwPDB-VP) : recalc28949

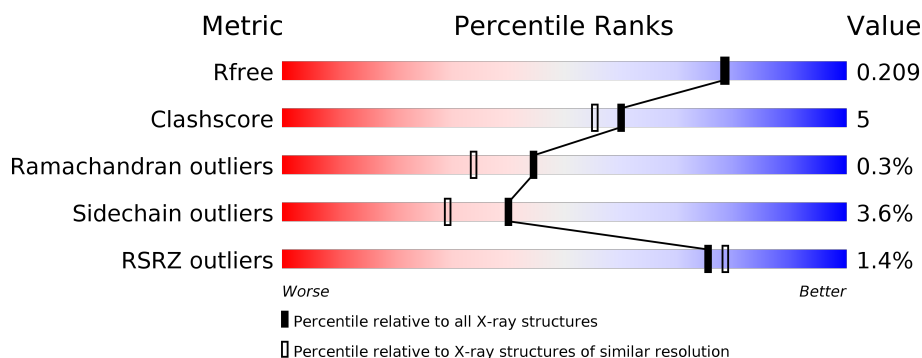
1 Overall quality at a glance

The following experimental techniques were used to determine the structure:

X-RAY DIFFRACTION

The reported resolution of this entry is 1.89 Å.

Percentile scores (ranging between 0-100) for global validation metrics of the entry are shown in the following graphic. The table shows the number of entries on which the scores are based.



Metric	Whole archive (#Entries)	Similar resolution (#Entries, resolution range(Å))
R_{free}	100719	5047 (1.90-1.90)
Clashscore	112137	5731 (1.90-1.90)
Ramachandran outliers	110173	5669 (1.90-1.90)
Sidechain outliers	110143	5670 (1.90-1.90)
RSRZ outliers	101464	5100 (1.90-1.90)

The table below summarises the geometric issues observed across the polymeric chains and their fit to the electron density. The red, orange, yellow and green segments on the lower bar indicate the fraction of residues that contain outliers for ≥ 3 , 2, 1 and 0 types of geometric quality criteria. A grey segment represents the fraction of residues that are not modelled. The numeric value for each fraction is indicated below the corresponding segment, with a dot representing fractions $\leq 5\%$. The upper red bar (where present) indicates the fraction of residues that have poor fit to the electron density. The numeric value is given above the bar.

Mol	Chain	Length	Quality of chain
1	A	438	<div> <div>2%</div> <div> <div></div> <div>88%</div> <div>12%</div> </div> <div></div> </div>
1	B	438	<div> <div>%</div> <div> <div></div> <div>86%</div> <div>12%</div> </div> <div></div> </div>

2 Entry composition [i](#)

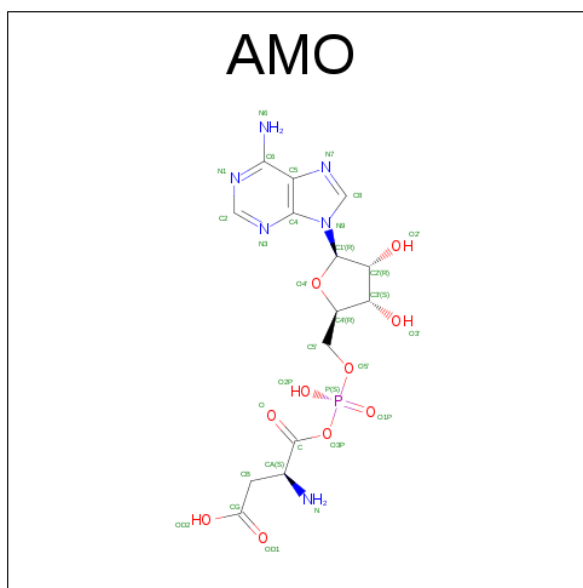
There are 5 unique types of molecules in this entry. The entry contains 7724 atoms, of which 0 are hydrogens and 0 are deuteriums.

In the tables below, the ZeroOcc column contains the number of atoms modelled with zero occupancy, the AltConf column contains the number of residues with at least one atom in alternate conformation and the Trace column contains the number of residues modelled with at most 2 atoms.

- Molecule 1 is a protein called Aspartyl-tRNA synthetase.

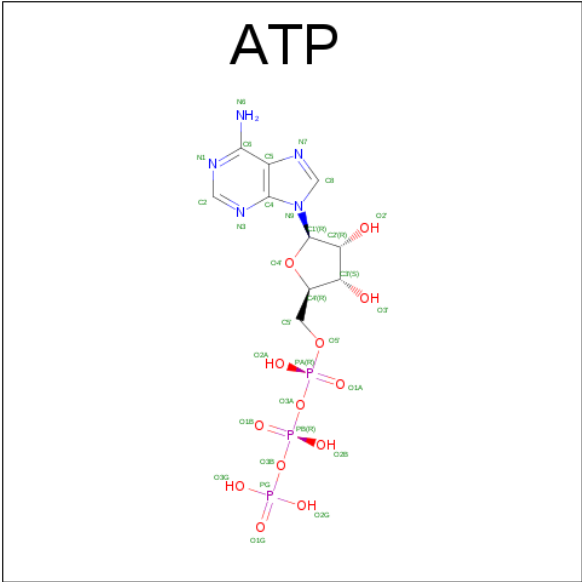
Mol	Chain	Residues	Atoms					ZeroOcc	AltConf	Trace
1	A	438	Total	C	N	O	S	0	0	0
			3593	2316	605	658	14			
1	B	438	Total	C	N	O	S	0	0	0
			3593	2316	605	658	14			

- Molecule 2 is ASPARTYL-ADENOSINE-5'-MONOPHOSPHATE (three-letter code: AMO) (formula: $C_{14}H_{19}N_6O_{10}P$).



Mol	Chain	Residues	Atoms					ZeroOcc	AltConf
2	A	1	Total	C	N	O	P	0	0
			31	14	6	10	1		

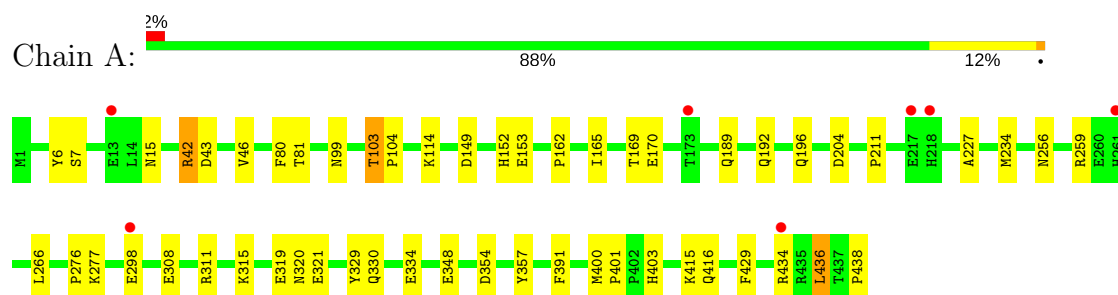
- Molecule 3 is ADENOSINE-5'-TRIPHOSPHATE (three-letter code: ATP) (formula: $C_{10}H_{16}N_5O_{13}P_3$).



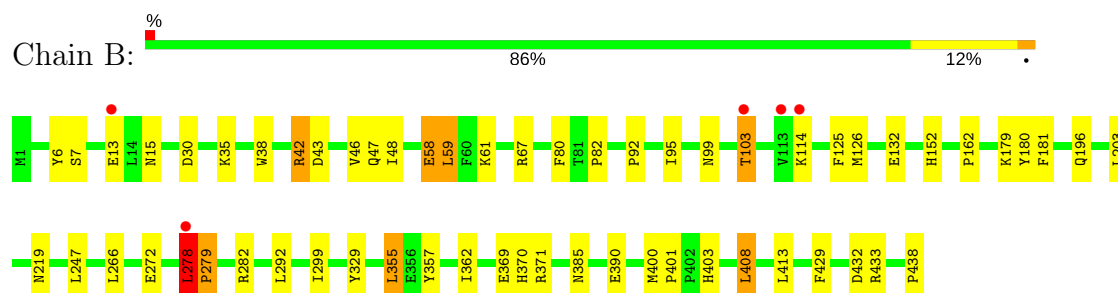
3 Residue-property plots [i](#)

These plots are drawn for all protein, RNA and DNA chains in the entry. The first graphic for a chain summarises the proportions of the various outlier classes displayed in the second graphic. The second graphic shows the sequence view annotated by issues in geometry and electron density. Residues are color-coded according to the number of geometric quality criteria for which they contain at least one outlier: green = 0, yellow = 1, orange = 2 and red = 3 or more. A red dot above a residue indicates a poor fit to the electron density ($RSRZ > 2$). Stretches of 2 or more consecutive residues without any outlier are shown as a green connector. Residues present in the sample, but not in the model, are shown in grey.

• Molecule 1: Aspartyl-tRNA synthetase



• Molecule 1: Aspartyl-tRNA synthetase



4 Data and refinement statistics

Property	Value	Source
Space group	P 21 21 2	Depositor
Cell constants a, b, c, α , β , γ	123.22Å 124.87Å 86.93Å 90.00° 90.00° 90.00°	Depositor
Resolution (Å)	28.58 – 1.89 28.58 – 1.89	Depositor EDS
% Data completeness (in resolution range)	(Not available) (28.58-1.89) 93.1 (28.58-1.89)	Depositor EDS
R_{merge}	(Not available)	Depositor
R_{sym}	0.05	Depositor
$\langle I/\sigma(I) \rangle$ ¹	5.13 (at 1.89Å)	Xtriage
Refinement program	PHENIX	Depositor
R, R_{free}	0.188 , 0.213 0.180 , 0.209	Depositor DCC
R_{free} test set	5077 reflections (5.04%)	DCC
Wilson B-factor (Å ²)	15.8	Xtriage
Anisotropy	0.268	Xtriage
Bulk solvent k_{sol} (e/Å ³), B_{sol} (Å ²)	0.37 , 43.3	EDS
L-test for twinning ²	$\langle L \rangle = 0.49$, $\langle L^2 \rangle = 0.32$	Xtriage
Estimated twinning fraction	0.013 for k,h,-l	Xtriage
F_o, F_c correlation	0.94	EDS
Total number of atoms	7724	wwPDB-VP
Average B, all atoms (Å ²)	17.0	wwPDB-VP

Xtriage's analysis on translational NCS is as follows: *The largest off-origin peak in the Patterson function is 3.18% of the height of the origin peak. No significant pseudotranslation is detected.*

¹Intensities estimated from amplitudes.

²Theoretical values of $\langle |L| \rangle$, $\langle L^2 \rangle$ for acentric reflections are 0.5, 0.333 respectively for untwinned datasets, and 0.375, 0.2 for perfectly twinned datasets.

5 Model quality

5.1 Standard geometry

Bond lengths and bond angles in the following residue types are not validated in this section: MG, AMO, ATP

The Z score for a bond length (or angle) is the number of standard deviations the observed value is removed from the expected value. A bond length (or angle) with $|Z| > 5$ is considered an outlier worth inspection. RMSZ is the root-mean-square of all Z scores of the bond lengths (or angles).

Mol	Chain	Bond lengths		Bond angles	
		RMSZ	$\# Z > 5$	RMSZ	$\# Z > 5$
1	A	0.35	0/3681	0.55	0/4970
1	B	0.36	0/3681	0.59	1/4970 (0.0%)
All	All	0.36	0/7362	0.57	1/9940 (0.0%)

Chiral center outliers are detected by calculating the chiral volume of a chiral center and verifying if the center is modelled as a planar moiety or with the opposite hand. A planarity outlier is detected by checking planarity of atoms in a peptide group, atoms in a mainchain group or atoms of a sidechain that are expected to be planar.

Mol	Chain	#Chirality outliers	#Planarity outliers
1	B	0	2

There are no bond length outliers.

All (1) bond angle outliers are listed below:

Mol	Chain	Res	Type	Atoms	Z	Observed($^{\circ}$)	Ideal($^{\circ}$)
1	B	408	LEU	CA-CB-CG	5.39	127.69	115.30

There are no chirality outliers.

All (2) planarity outliers are listed below:

Mol	Chain	Res	Type	Group
1	B	103	THR	Peptide
1	B	278	LEU	Peptide

5.2 Too-close contacts

In the following table, the Non-H and H(model) columns list the number of non-hydrogen atoms and hydrogen atoms in the chain respectively. The H(added) column lists the number of hydrogen

atoms added and optimized by MolProbity. The Clashes column lists the number of clashes within the asymmetric unit, whereas Symm-Clashes lists symmetry related clashes.

Mol	Chain	Non-H	H(model)	H(added)	Clashes	Symm-Clashes
1	A	3593	0	3582	39	0
1	B	3593	0	3582	45	0
2	A	31	0	17	0	0
3	B	31	0	11	0	0
4	B	3	0	0	0	0
5	A	230	0	0	6	0
5	B	243	0	0	6	0
All	All	7724	0	7192	77	0

The all-atom clashscore is defined as the number of clashes found per 1000 atoms (including hydrogen atoms). The all-atom clashscore for this structure is 5.

All (77) close contacts within the same asymmetric unit are listed below, sorted by their clash magnitude.

Atom-1	Atom-2	Interatomic distance (Å)	Clash overlap (Å)
1:B:219:ASN:HD21	1:B:433:ARG:H	1.12	0.95
1:A:320:ASN:HD22	1:A:321:GLU:HG3	1.31	0.94
1:B:369:GLU:OE2	1:B:371:ARG:HD3	1.66	0.93
1:B:59:LEU:HD11	1:B:95:ILE:HD12	1.55	0.88
1:B:196:GLN:HE21	1:B:403:HIS:HE1	1.28	0.78
1:B:59:LEU:HD11	1:B:95:ILE:CD1	2.15	0.76
1:A:320:ASN:ND2	1:A:321:GLU:HG3	2.02	0.74
1:B:35:LYS:HG2	5:B:2081:HOH:O	1.90	0.72
1:A:99:ASN:ND2	5:A:2283:HOH:O	2.24	0.70
1:A:6:TYR:CE2	1:A:42:ARG:HD2	2.27	0.69
1:B:355:LEU:HD13	1:B:362:ILE:HD11	1.73	0.69
1:A:165:ILE:CD1	1:A:169:THR:HG23	2.24	0.68
1:B:30:ASP:OD1	5:B:2081:HOH:O	2.13	0.66
1:A:308:GLU:HG3	1:A:311:ARG:HH21	1.63	0.64
1:B:196:GLN:HE21	1:B:403:HIS:CE1	2.15	0.62
1:A:42:ARG:HD3	5:A:2165:HOH:O	2.00	0.62
1:A:334:GLU:HG2	5:A:2059:HOH:O	2.02	0.60
1:B:15:ASN:ND2	1:B:80:PHE:H	1.99	0.60
1:A:429:PHE:HB2	1:B:162:PRO:HG3	1.85	0.59
1:A:400:MET:H	1:B:99:ASN:ND2	2.00	0.59
1:A:15:ASN:ND2	1:A:80:PHE:H	2.01	0.59
1:B:59:LEU:CD1	1:B:95:ILE:HD12	2.31	0.57
1:A:415:LYS:NZ	1:A:416:GLN:HE22	2.03	0.56
1:B:6:TYR:CE2	1:B:42:ARG:HD2	2.39	0.56

Continued on next page...

Continued from previous page...

Atom-1	Atom-2	Interatomic distance (Å)	Clash overlap (Å)
1:A:15:ASN:HD21	1:A:80:PHE:H	1.55	0.54
1:B:42:ARG:HG2	1:B:43:ASP:N	2.22	0.54
1:B:292:LEU:HD13	1:B:299:ILE:HD13	1.90	0.54
1:A:170:GLU:H	1:A:189:GLN:NE2	2.06	0.54
1:A:436:LEU:HG	1:B:180:TYR:CD2	2.42	0.53
1:A:320:ASN:ND2	1:A:321:GLU:CG	2.72	0.53
1:A:99:ASN:ND2	1:B:400:MET:H	2.08	0.52
1:A:192:GLN:HE21	1:A:196:GLN:NE2	2.08	0.51
1:B:369:GLU:OE2	1:B:371:ARG:CD	2.50	0.51
1:A:152:HIS:HD2	5:A:2006:HOH:O	1.93	0.51
1:B:401:PRO:O	1:B:403:HIS:HD2	1.94	0.49
1:B:278:LEU:O	1:B:279:PRO:O	2.31	0.49
1:B:38:TRP:CZ3	1:B:47:GLN:HB2	2.47	0.49
1:A:438:PRO:HD2	5:A:2338:HOH:O	2.12	0.49
1:B:152:HIS:HD2	5:B:2107:HOH:O	1.94	0.49
1:B:42:ARG:HG2	1:B:43:ASP:OD1	2.13	0.48
1:A:401:PRO:O	1:A:403:HIS:HD2	1.97	0.48
1:B:125:PHE:CE1	1:B:126:MET:HG2	2.48	0.48
1:B:42:ARG:HD3	5:B:2211:HOH:O	2.14	0.47
1:B:15:ASN:HD21	1:B:80:PHE:H	1.61	0.47
1:A:391:PHE:CD2	1:B:438:PRO:HG3	2.50	0.47
1:B:179:LYS:HE3	1:B:181:PHE:O	2.16	0.46
1:A:256:ASN:HD21	1:A:276:PRO:HD2	1.81	0.46
1:A:42:ARG:HG2	1:A:43:ASP:N	2.30	0.46
1:A:415:LYS:HZ2	1:A:416:GLN:HE22	1.63	0.45
1:A:7:SER:HB3	1:A:46:VAL:HG23	1.97	0.45
1:A:103:THR:HG22	1:A:104:PRO:HA	1.98	0.45
1:A:42:ARG:HG2	1:A:43:ASP:OD1	2.16	0.45
1:B:219:ASN:HD21	1:B:433:ARG:N	1.96	0.45
1:B:59:LEU:HD11	1:B:95:ILE:CG1	2.47	0.45
1:A:256:ASN:HD22	1:A:259:ARG:HH11	1.66	0.44
1:A:277:LYS:HE2	5:A:2310:HOH:O	2.17	0.44
1:B:48:ILE:CG2	1:B:92:PRO:HG3	2.48	0.43
1:A:42:ARG:CG	1:A:43:ASP:OD1	2.67	0.43
1:A:204:ASP:O	1:A:234:MET:HA	2.19	0.43
1:A:99:ASN:HD22	1:B:400:MET:H	1.66	0.43
1:B:13:GLU:CD	1:B:13:GLU:H	2.22	0.43
1:B:58:GLU:OE2	1:B:61:LYS:HD3	2.19	0.43
1:A:165:ILE:HD12	1:A:169:THR:HG23	1.99	0.43
1:B:48:ILE:HG22	1:B:92:PRO:HG3	2.00	0.43
1:B:370:HIS:CD2	5:B:2136:HOH:O	2.72	0.42

Continued on next page...

Continued from previous page...

Atom-1	Atom-2	Interatomic distance (Å)	Clash overlap (Å)
1:B:132:GLU:H	1:B:132:GLU:CD	2.23	0.42
1:A:329:TYR:CD1	1:A:330:GLN:HG3	2.54	0.42
1:A:162:PRO:CG	1:B:429:PHE:HB2	2.50	0.42
1:B:42:ARG:CG	1:B:43:ASP:OD1	2.67	0.42
1:B:7:SER:HB3	1:B:46:VAL:CG2	2.50	0.42
1:A:315:LYS:O	1:A:319:GLU:HG3	2.20	0.41
1:B:82:PRO:HB2	5:B:2142:HOH:O	2.21	0.41
1:A:149:ASP:O	1:A:153:GLU:HG3	2.20	0.41
1:A:211:PRO:HA	1:A:227:ALA:O	2.21	0.40
1:B:219:ASN:ND2	1:B:432:ASP:HB2	2.37	0.40
1:B:282:ARG:HH11	1:B:282:ARG:HD3	1.76	0.40
1:B:219:ASN:ND2	1:B:433:ARG:H	1.96	0.40

There are no symmetry-related clashes.

5.3 Torsion angles [i](#)

5.3.1 Protein backbone [i](#)

In the following table, the Percentiles column shows the percent Ramachandran outliers of the chain as a percentile score with respect to all X-ray entries followed by that with respect to entries of similar resolution.

The Analysed column shows the number of residues for which the backbone conformation was analysed, and the total number of residues.

Mol	Chain	Analysed	Favoured	Allowed	Outliers	Percentiles	
1	A	436/438 (100%)	430 (99%)	6 (1%)	0	100	100
1	B	436/438 (100%)	422 (97%)	11 (2%)	3 (1%)	25	13
All	All	872/876 (100%)	852 (98%)	17 (2%)	3 (0%)	44	34

All (3) Ramachandran outliers are listed below:

Mol	Chain	Res	Type
1	B	279	PRO
1	B	278	LEU
1	B	103	THR

5.3.2 Protein sidechains ⓘ

In the following table, the Percentiles column shows the percent sidechain outliers of the chain as a percentile score with respect to all X-ray entries followed by that with respect to entries of similar resolution.

The Analysed column shows the number of residues for which the sidechain conformation was analysed, and the total number of residues.

Mol	Chain	Analysed	Rotameric	Outliers	Percentiles	
1	A	386/386 (100%)	375 (97%)	11 (3%)	49	40
1	B	386/386 (100%)	369 (96%)	17 (4%)	33	22
All	All	772/772 (100%)	744 (96%)	28 (4%)	40	29

All (28) residues with a non-rotameric sidechain are listed below:

Mol	Chain	Res	Type
1	A	42	ARG
1	A	81	THR
1	A	103	THR
1	A	114	LYS
1	A	266	LEU
1	A	298	GLU
1	A	348	GLU
1	A	354	ASP
1	A	357	TYR
1	A	434	ARG
1	A	436	LEU
1	B	42	ARG
1	B	58	GLU
1	B	59	LEU
1	B	67	ARG
1	B	114	LYS
1	B	203	LEU
1	B	247	LEU
1	B	266	LEU
1	B	272	GLU
1	B	278	LEU
1	B	329	TYR
1	B	355	LEU
1	B	357	TYR
1	B	385	ASN
1	B	390	GLU
1	B	408	LEU

Continued on next page...

Continued from previous page...

Mol	Chain	Res	Type
1	B	413	LEU

Some sidechains can be flipped to improve hydrogen bonding and reduce clashes. All (28) such sidechains are listed below:

Mol	Chain	Res	Type
1	A	15	ASN
1	A	99	ASN
1	A	152	HIS
1	A	154	ASN
1	A	189	GLN
1	A	196	GLN
1	A	219	ASN
1	A	253	HIS
1	A	256	ASN
1	A	262	ASN
1	A	320	ASN
1	A	322	ASN
1	A	370	HIS
1	A	403	HIS
1	A	416	GLN
1	B	15	ASN
1	B	99	ASN
1	B	152	HIS
1	B	189	GLN
1	B	219	ASN
1	B	253	HIS
1	B	261	HIS
1	B	322	ASN
1	B	345	ASN
1	B	367	GLN
1	B	370	HIS
1	B	385	ASN
1	B	403	HIS

5.3.3 RNA ⓘ

There are no RNA molecules in this entry.

5.4 Non-standard residues in protein, DNA, RNA chains [i](#)

There are no non-standard protein/DNA/RNA residues in this entry.

5.5 Carbohydrates [i](#)

There are no carbohydrates in this entry.

5.6 Ligand geometry [i](#)

Of 5 ligands modelled in this entry, 3 are monoatomic - leaving 2 for Mogul analysis.

In the following table, the Counts columns list the number of bonds (or angles) for which Mogul statistics could be retrieved, the number of bonds (or angles) that are observed in the model and the number of bonds (or angles) that are defined in the chemical component dictionary. The Link column lists molecule types, if any, to which the group is linked. The Z score for a bond length (or angle) is the number of standard deviations the observed value is removed from the expected value. A bond length (or angle) with $|Z| > 2$ is considered an outlier worth inspection. RMSZ is the root-mean-square of all Z scores of the bond lengths (or angles).

Mol	Type	Chain	Res	Link	Bond lengths			Bond angles		
					Counts	RMSZ	$\# Z > 2$	Counts	RMSZ	$\# Z > 2$
2	AMO	A	439	-	26,33,33	1.83	6 (23%)	26,49,49	2.32	4 (15%)
3	ATP	B	1039	4	27,33,33	2.46	10 (37%)	25,52,52	2.73	7 (28%)

In the following table, the Chirals column lists the number of chiral outliers, the number of chiral centers analysed, the number of these observed in the model and the number defined in the chemical component dictionary. Similar counts are reported in the Torsion and Rings columns. '-' means no outliers of that kind were identified.

Mol	Type	Chain	Res	Link	Chirals	Torsions	Rings
2	AMO	A	439	-	-	0/15/39/39	0/3/3/3
3	ATP	B	1039	4	-	0/18/38/38	0/3/3/3

All (16) bond length outliers are listed below:

Mol	Chain	Res	Type	Atoms	Z	Observed(Å)	Ideal(Å)
3	B	1039	ATP	O2'-C2'	-2.38	1.37	1.43
2	A	439	AMO	O2'-C2'	-2.33	1.37	1.43
3	B	1039	ATP	C2'-C3'	-2.27	1.47	1.53
3	B	1039	ATP	PG-O3B	-2.22	1.56	1.60
2	A	439	AMO	C5-C4	-2.21	1.35	1.40
3	B	1039	ATP	O3'-C3'	-2.15	1.38	1.43

Continued on next page...

Continued from previous page...

Mol	Chain	Res	Type	Atoms	Z	Observed(Å)	Ideal(Å)
2	A	439	AMO	C6-N6	2.29	1.43	1.34
3	B	1039	ATP	C5-C4	2.33	1.45	1.40
3	B	1039	ATP	C6-N6	2.38	1.43	1.34
3	B	1039	ATP	C8-N7	3.68	1.41	1.34
2	A	439	AMO	C2-N3	3.76	1.38	1.32
3	B	1039	ATP	C2-N3	4.13	1.39	1.32
2	A	439	AMO	O4'-C1'	4.20	1.47	1.41
2	A	439	AMO	C8-N7	4.35	1.42	1.34
3	B	1039	ATP	O4'-C1'	5.71	1.49	1.41
3	B	1039	ATP	C2-N1	7.15	1.47	1.33

All (11) bond angle outliers are listed below:

Mol	Chain	Res	Type	Atoms	Z	Observed(°)	Ideal(°)
3	B	1039	ATP	N3-C2-N1	-9.81	120.31	128.86
2	A	439	AMO	N3-C2-N1	-9.38	120.69	128.86
3	B	1039	ATP	C4'-O4'-C1'	-6.57	102.77	109.77
2	A	439	AMO	C4'-O4'-C1'	-3.49	106.05	109.77
3	B	1039	ATP	O3'-C3'-C2'	2.02	118.30	111.83
3	B	1039	ATP	O4'-C4'-C5'	2.37	117.41	109.40
3	B	1039	ATP	O2'-C2'-C3'	2.59	120.14	111.83
3	B	1039	ATP	O3'-C3'-C4'	2.81	119.28	111.09
2	A	439	AMO	O3'-C3'-C4'	2.95	119.72	111.09
2	A	439	AMO	O2'-C2'-C1'	3.03	121.11	111.61
3	B	1039	ATP	O2'-C2'-C1'	3.88	123.75	111.61

There are no chirality outliers.

There are no torsion outliers.

There are no ring outliers.

No monomer is involved in short contacts.

5.7 Other polymers [i](#)

There are no such residues in this entry.

5.8 Polymer linkage issues [i](#)

There are no chain breaks in this entry.

6 Fit of model and data [i](#)

6.1 Protein, DNA and RNA chains [i](#)

In the following table, the column labelled ‘#RSRZ> 2’ contains the number (and percentage) of RSRZ outliers, followed by percent RSRZ outliers for the chain as percentile scores relative to all X-ray entries and entries of similar resolution. The OWAB column contains the minimum, median, 95th percentile and maximum values of the occupancy-weighted average B-factor per residue. The column labelled ‘Q< 0.9’ lists the number of (and percentage) of residues with an average occupancy less than 0.9.

Mol	Chain	Analysed	<RSRZ>	#RSRZ>2	OWAB(Å ²)	Q<0.9
1	A	438/438 (100%)	-0.34	7 (1%) 72 75	8, 15, 29, 48	0
1	B	438/438 (100%)	-0.36	5 (1%) 80 83	7, 16, 30, 47	0
All	All	876/876 (100%)	-0.35	12 (1%) 75 78	7, 15, 30, 48	0

All (12) RSRZ outliers are listed below:

Mol	Chain	Res	Type	RSRZ
1	B	103	THR	5.3
1	A	218	HIS	4.0
1	A	173	THR	3.8
1	A	434	ARG	3.1
1	B	113	VAL	3.0
1	B	114	LYS	2.6
1	B	13	GLU	2.6
1	B	278	LEU	2.5
1	A	261	HIS	2.4
1	A	217	GLU	2.1
1	A	298	GLU	2.1
1	A	13	GLU	2.0

6.2 Non-standard residues in protein, DNA, RNA chains [i](#)

There are no non-standard protein/DNA/RNA residues in this entry.

6.3 Carbohydrates [i](#)

There are no carbohydrates in this entry.

6.4 Ligands [i](#)

In the following table, the Atoms column lists the number of modelled atoms in the group and the number defined in the chemical component dictionary. LLDF column lists the quality of electron density of the group with respect to its neighbouring residues in protein, DNA or RNA chains. The B-factors column lists the minimum, median, 95th percentile and maximum values of B factors of atoms in the group. The column labelled 'Q< 0.9' lists the number of atoms with occupancy less than 0.9.

Mol	Type	Chain	Res	Atoms	RSCC	RSR	LLDF	B-factors(Å ²)	Q<0.9
3	ATP	B	1039	31/31	0.95	0.10	0.33	11,17,27,30	0
2	AMO	A	439	31/31	0.97	0.09	-0.63	10,12,17,18	0
4	MG	B	1041	1/1	0.94	0.08	-	30,30,30,30	0
4	MG	B	1042	1/1	0.97	0.05	-	30,30,30,30	0
4	MG	B	1040	1/1	0.99	0.12	-	27,27,27,27	0

6.5 Other polymers [i](#)

There are no such residues in this entry.