



Full wwPDB NMR Structure Validation Report ⓘ

Feb 19, 2018 – 08:57 PM EST

PDB ID : 5NIQ
Title : exendin-4 variant with dual GLP-1 / glucagon receptor activity
Authors : Evers, A.; Kurz, M.
Deposited on : 2017-03-24

This is a Full wwPDB NMR Structure Validation Report for a publicly released PDB entry.

We welcome your comments at validation@mail.wwpdb.org

A user guide is available at

<http://wwpdb.org/validation/2016/NMRValidationReportHelp>

with specific help available everywhere you see the ⓘ symbol.

The following versions of software and data (see [references ⓘ](#)) were used in the production of this report:

Cyrange : Kirchner and Güntert (2011)
NmrClust : Kelley et al. (1996)
MolProbity : 4.02b-467
Mogul : 1.7.2 (RC1), CSD as538be (2017)
Percentile statistics : 20161228.v01 (using entries in the PDB archive December 28th 2016)
RCI : v_1n_11_5_13_A (Berjanski et al., 2005)
PANAV : Wang et al. (2010)
ShiftChecker : rb-20030736
Ideal geometry (proteins) : Engh & Huber (2001)
Ideal geometry (DNA, RNA) : Parkinson et al. (1996)
Validation Pipeline (wwPDB-VP) : rb-20030736

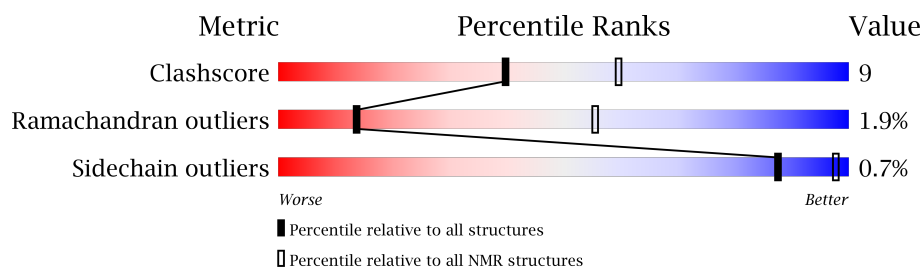
1 Overall quality at a glance

The following experimental techniques were used to determine the structure:

SOLUTION NMR


The overall completeness of chemical shifts assignment is 49%.

Percentile scores (ranging between 0-100) for global validation metrics of the entry are shown in the following graphic. The table shows the number of entries on which the scores are based.



Metric	Whole archive (#Entries)	NMR archive (#Entries)
Clashscore	125131	11601
Ramachandran outliers	121729	10391
Sidechain outliers	121581	10367

The table below summarises the geometric issues observed across the polymeric chains and their fit to the experimental data. The red, orange, yellow and green segments indicate the fraction of residues that contain outliers for ≥ 3 , 2, 1 and 0 types of geometric quality criteria. A cyan segment indicates the fraction of residues that are not part of the well-defined cores, and a grey segment represents the fraction of residues that are not modelled. The numeric value for each fraction is indicated below the corresponding segment, with a dot representing fractions $\leq 5\%$

Mol	Chain	Length	Quality of chain
1	A	40	 60% 15% 5% 20%

2 Ensemble composition and analysis

This entry contains 10 models. Model 6 is the overall representative, medoid model (most similar to other models). The authors have identified model 5 as representative, based on the following criterion: *fewest violations*.

The following residues are included in the computation of the global validation metrics.

Well-defined (core) protein residues			
Well-defined core	Residue range (total)	Backbone RMSD (Å)	Medoid model
1	A:6-A:37 (32)	0.35	6

Ill-defined regions of proteins are excluded from the global statistics.

Ligands and non-protein polymers are included in the analysis.

The models can be grouped into 3 clusters. No single-model clusters were found.

Cluster number	Models
1	4, 5, 7, 8
2	1, 3, 9, 10
3	2, 6

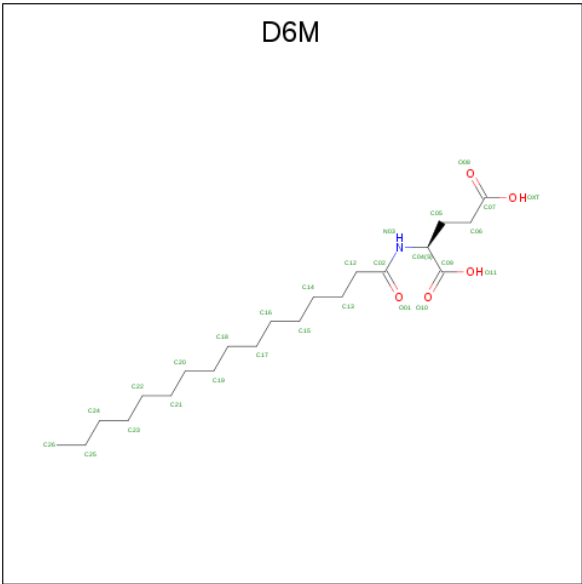
3 Entry composition [i](#)

There are 2 unique types of molecules in this entry. The entry contains 643 atoms, of which 319 are hydrogens and 0 are deuteriums.

- Molecule 1 is a protein called Exendin-4.

Mol	Chain	Residues	Atoms					Trace
1	A	40	Total	C	H	N	O	1
			580	182	282	56	60	

- Molecule 2 is N-hexadecanoyl-L-glutamic acid (three-letter code: D6M) (formula: C₂₁H₃₉NO₅).



Mol	Chain	Residues	Atoms				
2	A	1	Total	C	H	N	O
			63	21	37	1	4

4 Residue-property plots [i](#)

4.1 Average score per residue in the NMR ensemble

These plots are provided for all protein, RNA and DNA chains in the entry. The first graphic is the same as shown in the summary in section 1 of this report. The second graphic shows the sequence where residues are colour-coded according to the number of geometric quality criteria for which they contain at least one outlier: green = 0, yellow = 1, orange = 2 and red = 3 or more. Stretches of 2 or more consecutive residues without any outliers are shown as green connectors. Residues which are classified as ill-defined in the NMR ensemble, are shown in cyan with an underline colour-coded according to the previous scheme. Residues which were present in the experimental sample, but not modelled in the final structure are shown in grey.

- Molecule 1: Exendin-4

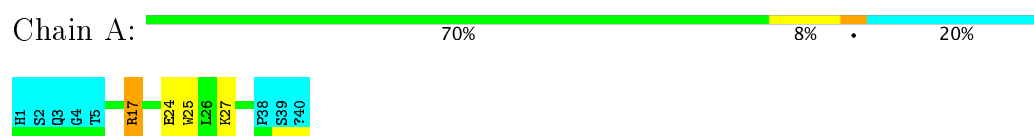


4.2 Scores per residue for each member of the ensemble

Colouring as in section 4.1 above.

4.2.1 Score per residue for model 1

- Molecule 1: Exendin-4



4.2.2 Score per residue for model 2

- Molecule 1: Exendin-4



4.2.3 Score per residue for model 3

- Molecule 1: Exendin-4



4.2.4 Score per residue for model 4

- Molecule 1: Exendin-4



4.2.5 Score per residue for model 5

- Molecule 1: Exendin-4



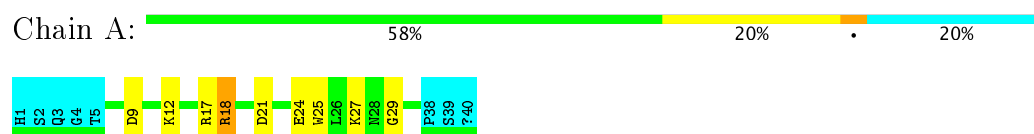
4.2.6 Score per residue for model 6 (medoid)

- Molecule 1: Exendin-4



4.2.7 Score per residue for model 7

- Molecule 1: Exendin-4



4.2.8 Score per residue for model 8

- Molecule 1: Exendin-4



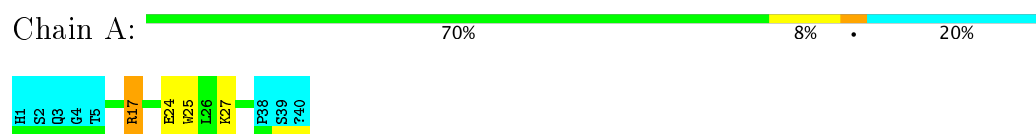
4.2.9 Score per residue for model 9

- Molecule 1: Exendin-4



4.2.10 Score per residue for model 10

- Molecule 1: Exendin-4



5 Refinement protocol and experimental data overview

The models were refined using the following method: *molecular dynamics*.

Of the 20 calculated structures, 10 were deposited, based on the following criterion: *structures with the least restraint violations*.

The following table shows the software used for structure solution, optimisation and refinement.

Software name	Classification	Version
SYBYL	structure calculation	2.1.1

The following table shows chemical shift validation statistics as aggregates over all chemical shift files. Detailed validation can be found in section 7 of this report.

Chemical shift file(s)	5niq_cs.cif
Number of chemical shift lists	1
Total number of shifts	246
Number of shifts mapped to atoms	245
Number of unparsed shifts	1
Number of shifts with mapping errors	0
Number of shifts with mapping warnings	0
Assignment completeness (well-defined parts)	49%

No validations of the models with respect to experimental NMR restraints is performed at this time.

6 Model quality

6.1 Standard geometry

Bond lengths and bond angles in the following residue types are not validated in this section: DSN, D6M, NH2

The Z score for a bond length (or angle) is the number of standard deviations the observed value is removed from the expected value. A bond length (or angle) with $|Z| > 5$ is considered an outlier worth inspection. RMSZ is the (average) root-mean-square of all Z scores of the bond lengths (or angles).

Mol	Chain	Bond lengths		Bond angles	
		RMSZ	#Z>5	RMSZ	#Z>5
1	A	0.97±0.01	0±0/255 (0.0±0.0%)	1.26±0.04	3±0/345 (0.8±0.1%)
All	All	0.97	0/2550 (0.0%)	1.26	27/3450 (0.8%)

There are no bond-length outliers.

All unique angle outliers are listed below. They are sorted according to the Z-score of the worst occurrence in the ensemble.

Mol	Chain	Res	Type	Atoms	Z	Observed(°)	Ideal(°)	Models	
								Worst	Total
1	A	18	ARG	NE-CZ-NH2	7.49	124.04	120.30	6	8
1	A	25	TRP	CE2-CD2-CG	-7.43	101.35	107.30	4	10
1	A	17	ARG	NE-CZ-NH2	6.44	123.52	120.30	9	8
1	A	9	ASP	CB-CG-OD1	5.25	123.03	118.30	5	1

There are no chirality outliers.

There are no planarity outliers.

6.2 Too-close contacts

In the following table, the Non-H and H(model) columns list the number of non-hydrogen atoms and hydrogen atoms in each chain respectively. The H(added) column lists the number of hydrogen atoms added and optimized by MolProbity. The Clashes column lists the number of clashes averaged over the ensemble.

Mol	Chain	Non-H	H(model)	H(added)	Clashes
1	A	248	236	236	5±2
2	A	26	37	37	2±1
All	All	2740	2730	2730	48

The all-atom clashscore is defined as the number of clashes found per 1000 atoms (including hydrogen atoms). The all-atom clashscore for this structure is 9.

All unique clashes are listed below, sorted by their clash magnitude.

Atom-1	Atom-2	Clash(Å)	Distance(Å)	Models	
				Worst	Total
1:A:9:ASP:OD1	1:A:12:LYS:NZ	0.72	2.23	4	5
1:A:9:ASP:OD2	1:A:12:LYS:NZ	0.59	2.27	7	5
1:A:24:GLU:OE2	1:A:27:LYS:NZ	0.56	2.38	8	10
1:A:24:GLU:OE1	1:A:27:LYS:NZ	0.55	2.40	4	9
1:A:17:ARG:NH2	2:A:101:D6M:O11	0.51	2.44	7	3
1:A:18:ARG:NH2	2:A:101:D6M:O10	0.47	2.47	4	3
1:A:18:ARG:NH2	1:A:21:ASP:OD1	0.47	2.46	9	1
1:A:17:ARG:NH1	2:A:101:D6M:O11	0.46	2.48	1	4
1:A:18:ARG:NH1	2:A:101:D6M:O10	0.43	2.50	2	1
1:A:12:LYS:NZ	1:A:13:GLN:OE1	0.43	2.51	9	1
1:A:17:ARG:NH2	2:A:101:D6M:O10	0.42	2.50	6	2
1:A:18:ARG:NH2	1:A:21:ASP:OD2	0.42	2.51	7	1
1:A:18:ARG:NH1	2:A:101:D6M:O11	0.42	2.52	6	1
1:A:9:ASP:CG	1:A:12:LYS:NZ	0.40	2.75	5	1
1:A:18:ARG:NH1	2:A:101:D6M:O01	0.40	2.54	3	1

6.3 Torsion angles [i](#)

6.3.1 Protein backbone [i](#)

In the following table, the Percentiles column shows the percent Ramachandran outliers of the chain as a percentile score with respect to all PDB entries followed by that with respect to all NMR entries. The Analysed column shows the number of residues for which the backbone conformation was analysed and the total number of residues.

Mol	Chain	Analysed	Favoured	Allowed	Outliers	Percentiles	
1	A	32/40 (80%)	30±1 (95±2%)	1±1 (3±2%)	1±0 (2±2%)	14	55
All	All	320/400 (80%)	304 (95%)	10 (3%)	6 (2%)	14	55

All 2 unique Ramachandran outliers are listed below. They are sorted by the frequency of occurrence in the ensemble.

Mol	Chain	Res	Type	Models (Total)
1	A	29	GLY	5
1	A	6	PHE	1

6.3.2 Protein sidechains [i](#)

In the following table, the Percentiles column shows the percent sidechain outliers of the chain as a percentile score with respect to all PDB entries followed by that with respect to all NMR entries. The Analysed column shows the number of residues for which the sidechain conformation was analysed and the total number of residues.

Mol	Chain	Analysed	Rotameric	Outliers	Percentiles	
1	A	27/32 (84%)	27±0 (99±1%)	0±0 (1±1%)	87	98
All	All	270/320 (84%)	268 (99%)	2 (1%)	87	98

All 1 unique residues with a non-rotameric sidechain are listed below.

Mol	Chain	Res	Type	Models (Total)
1	A	9	ASP	2

6.3.3 RNA [i](#)

There are no RNA molecules in this entry.

6.4 Non-standard residues in protein, DNA, RNA chains [i](#)

1 non-standard protein/DNA/RNA residue is modelled in this entry.

In the following table, the Counts columns list the number of bonds for which Mogul statistics could be retrieved, the number of bonds that are observed in the model and the number of bonds that are defined in the chemical component dictionary. The Link column lists molecule types, if any, to which the group is linked. The Z score for a bond length is the number of standard deviations the observed value is removed from the expected value. A bond length with $|Z| > 2$ is considered an outlier worth inspection. RMSZ is the average root-mean-square of all Z scores of the bond lengths.

Mol	Type	Chain	Res	Link	Bond lengths		
					Counts	RMSZ	#Z>2
1	DSN	A	2	1	5,5,6	0.83±0.04	0±0 (0±0%)

In the following table, the Counts columns list the number of angles for which Mogul statistics could be retrieved, the number of angles that are observed in the model and the number of angles that are defined in the chemical component dictionary. The Link column lists molecule types, if any, to which the group is linked. The Z score for a bond angle is the number of standard deviations the observed value is removed from the expected value. A bond angle with $|Z| > 2$ is considered an outlier worth inspection. RMSZ is the average root-mean-square of all Z scores of the bond angles.

Mol	Type	Chain	Res	Link	Bond angles		
					Counts	RMSZ	#Z>2
1	DSN	A	2	1	1,5,7	2.33±0.21	0±0 (0±0%)

In the following table, the Chirals column lists the number of chiral outliers, the number of chiral centers analysed, the number of these observed in the model and the number defined in the chemical component dictionary. Similar counts are reported in the Torsion and Rings columns. '-' means no outliers of that kind were identified.

Mol	Type	Chain	Res	Link	Chirals	Torsions	Rings
1	DSN	A	2	1	-	0±0,2,4,6	0±0,0,0,0

There are no bond-length outliers.

There are no bond-angle outliers.

There are no chirality outliers.

There are no torsion outliers.

There are no ring outliers.

6.5 Carbohydrates [i](#)

There are no carbohydrates in this entry.

6.6 Ligand geometry [i](#)

1 ligand is modelled in this entry.

In the following table, the Counts columns list the number of bonds for which Mogul statistics could be retrieved, the number of bonds that are observed in the model and the number of bonds that are defined in the chemical component dictionary. The Link column lists molecule types, if any, to which the group is linked. The Z score for a bond length is the number of standard deviations the observed value is removed from the expected value. A bond length with $|Z| > 2$ is considered an outlier worth inspection. RMSZ is the average root-mean-square of all Z scores of the bond lengths.

Mol	Type	Chain	Res	Link	Bond lengths		
					Counts	RMSZ	#Z>2
2	D6M	A	101	1	22,25,26	0.79±0.02	0±0 (0±0%)

In the following table, the Counts columns list the number of angles for which Mogul statistics could be retrieved, the number of angles that are observed in the model and the number of angles that are defined in the chemical component dictionary. The Link column lists molecule types, if any, to which the group is linked. The Z score for a bond angle is the number of standard

deviations the observed value is removed from the expected value. A bond angle with $|Z| > 2$ is considered an outlier worth inspection. RMSZ is the average root-mean-square of all Z scores of the bond angles.

Mol	Type	Chain	Res	Link	Bond angles		
					Counts	RMSZ	#Z>2
2	D6M	A	101	1	22,27,29	0.80±0.08	0±0 (0±0%)

In the following table, the Chirals column lists the number of chiral outliers, the number of chiral centers analysed, the number of these observed in the model and the number defined in the chemical component dictionary. Similar counts are reported in the Torsion and Rings columns. '-' means no outliers of that kind were identified.

Mol	Type	Chain	Res	Link	Chirals	Torsions	Rings
2	D6M	A	101	1	-	0±0,22,27,28	0±0,0,0,0

There are no bond-length outliers.

There are no bond-angle outliers.

There are no chirality outliers.

There are no torsion outliers.

There are no ring outliers.

6.7 Other polymers [i](#)

There are no such molecules in this entry.

6.8 Polymer linkage issues [i](#)

There are no chain breaks in this entry.

7 Chemical shift validation

The completeness of assignment taking into account all chemical shift lists is 49% for the well-defined parts and 48% for the entire structure.

7.1 Chemical shift list 1

File name: 5niq_cs.cif

Chemical shift list name: *Peptide14_star31_mVgA3qH.txt*

7.1.1 Bookkeeping

The following table shows the results of parsing the chemical shift list and reports the number of nuclei with statistically unusual chemical shifts.

Total number of shifts	246
Number of shifts mapped to atoms	245
Number of unparsed shifts	1
Number of shifts with mapping errors	0
Number of shifts with mapping warnings	0
Number of shift outliers (ShiftChecker)	3

The following errors were found when reading this chemical shift list.

- Chemical shift has been reported more than once. The only occurrence is reported below.

Shift ID	Chain	Res	Type	Atom	Shift Data		
					Value	Uncertainty	Ambiguity
8	A	2	DSN	HB3	3.809	0.020	2

7.1.2 Chemical shift referencing

No chemical shift referencing corrections were calculated (not enough data).

7.1.3 Completeness of resonance assignments

The following table shows the completeness of the chemical shift assignments for the well-defined regions of the structure. The overall completeness is 49%, i.e. 191 atoms were assigned a chemical shift out of a possible 391. 0 out of 2 assigned methyl groups (LEU and VAL) were assigned stereospecifically.

	Total	¹ H	¹³ C	¹⁵ N
Backbone	61/154 (40%)	61/61 (100%)	0/64 (0%)	0/29 (0%)
Sidechain	114/207 (55%)	114/125 (91%)	0/70 (0%)	0/12 (0%)
Aromatic	16/30 (53%)	16/16 (100%)	0/13 (0%)	0/1 (0%)
Overall	191/391 (49%)	191/202 (95%)	0/147 (0%)	0/42 (0%)

The following table shows the completeness of the chemical shift assignments for the full structure. The overall completeness is 48%, i.e. 220 atoms were assigned a chemical shift out of a possible 455. 0 out of 2 assigned methyl groups (LEU and VAL) were assigned stereospecifically.

	Total	¹ H	¹³ C	¹⁵ N
Backbone	71/182 (39%)	71/72 (99%)	0/76 (0%)	0/34 (0%)
Sidechain	131/236 (56%)	131/143 (92%)	0/80 (0%)	0/13 (0%)
Aromatic	18/37 (49%)	18/20 (90%)	0/15 (0%)	0/2 (0%)
Overall	220/455 (48%)	220/235 (94%)	0/171 (0%)	0/49 (0%)

7.1.4 Statistically unusual chemical shifts ⓘ

The following table lists the statistically unusual chemical shifts. These are statistical measures, and large deviations from the mean do not necessarily imply incorrect assignments. Molecules containing paramagnetic centres or hemes are expected to give rise to anomalous chemical shifts.

Mol	Chain	Res	Type	Atom	Shift, ppm	Expected range, ppm	Z-score
1	A	30	GLY	HA3	1.39	5.80 – 2.00	-6.6
1	A	18	ARG	HG2	3.26	2.92 – 0.22	6.3
1	A	18	ARG	HG3	3.26	3.00 – 0.10	5.9

7.1.5 Random Coil Index (RCI) plots ⓘ

The image below reports *random coil index* values for the protein chains in the structure. The height of each bar gives a probability of a given residue to be disordered, as predicted from the available chemical shifts and the amino acid sequence. A value above 0.2 is an indication of significant predicted disorder. The colour of the bar shows whether the residue is in the well-defined core (black) or in the ill-defined residue ranges (cyan), as described in section 2 on ensemble composition.

Random coil index (RCI) for chain A:

