



Full wwPDB X-ray Structure Validation Report ⓘ

Feb 15, 2017 – 04:28 am GMT

PDB ID : 1NJO
Title : The crystal structure of the 50S Large ribosomal subunit from *Deinococcus radiodurans* complexed with a short substrate analog ACCPuromycin (ACCP)
Authors : Bashan, A.; Agmon, I.; Zarivatch, R.; Schlutzen, F.; Harms, J.M.; Berisio, R.; Bartels, H.; Hansen, H.A.; Yonath, A.
Deposited on : 2003-01-02
Resolution : 3.70 Å(reported)

This is a Full wwPDB X-ray Structure Validation Report for a publicly released PDB entry.

We welcome your comments at validation@mail.wwpdb.org

A user guide is available at

<http://wwpdb.org/validation/2016/XrayValidationReportHelp>

with specific help available everywhere you see the ⓘ symbol.

The following versions of software and data (see [references ⓘ](#)) were used in the production of this report:

MolProbity	:	4.02b-467
Mogul	:	1.7.2 (RC1), CSD as538be (2017)
Xtriage (Phenix)	:	NOT EXECUTED
EDS	:	NOT EXECUTED
Percentile statistics	:	20161228.v01 (using entries in the PDB archive December 28th 2016)
Ideal geometry (proteins)	:	Engh & Huber (2001)
Ideal geometry (DNA, RNA)	:	Parkinson et al. (1996)
Validation Pipeline (wwPDB-VP)	:	recalc28949

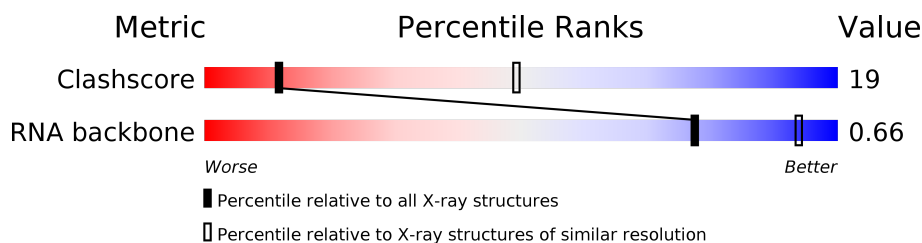
1 Overall quality at a glance

The following experimental techniques were used to determine the structure:

X-RAY DIFFRACTION

The reported resolution of this entry is 3.70 Å.

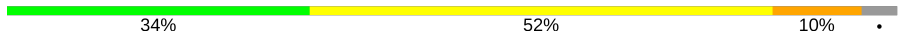

Percentile scores (ranging between 0-100) for global validation metrics of the entry are shown in the following graphic. The table shows the number of entries on which the scores are based.



Metric	Whole archive (#Entries)	Similar resolution (#Entries, resolution range(Å))
Clashscore	112137	1377 (3.90-3.50)
RNA backbone	2435	1010 (4.50-2.90)

The table below summarises the geometric issues observed across the polymeric chains and their fit to the electron density. The red, orange, yellow and green segments on the lower bar indicate the fraction of residues that contain outliers for ≥ 3 , 2, 1 and 0 types of geometric quality criteria. A grey segment represents the fraction of residues that are not modelled. The numeric value for each fraction is indicated below the corresponding segment, with a dot representing fractions $\leq 5\%$. The upper red bar (where present) indicates the fraction of residues that have poor fit to the electron density. The numeric value is given above the bar.

Note EDS was not executed.

Mol	Chain	Length	Quality of chain
1	0	2880	
2	5	4	

2 Entry composition

There are 2 unique types of molecules in this entry. The entry contains 59455 atoms, of which 0 are hydrogens and 0 are deuteriums.

In the tables below, the ZeroOcc column contains the number of atoms modelled with zero occupancy, the AltConf column contains the number of residues with at least one atom in alternate conformation and the Trace column contains the number of residues modelled with at most 2 atoms.

- Molecule 1 is a RNA chain called 23S ribosomal RNA.

Mol	Chain	Residues	Atoms					ZeroOcc	AltConf	Trace
1	0	2766	Total	C	N	O	P	0	0	0
			59359	26479	10949	19166	2765			

- Molecule 2 is a RNA chain called RNA ACC(Puromycin).

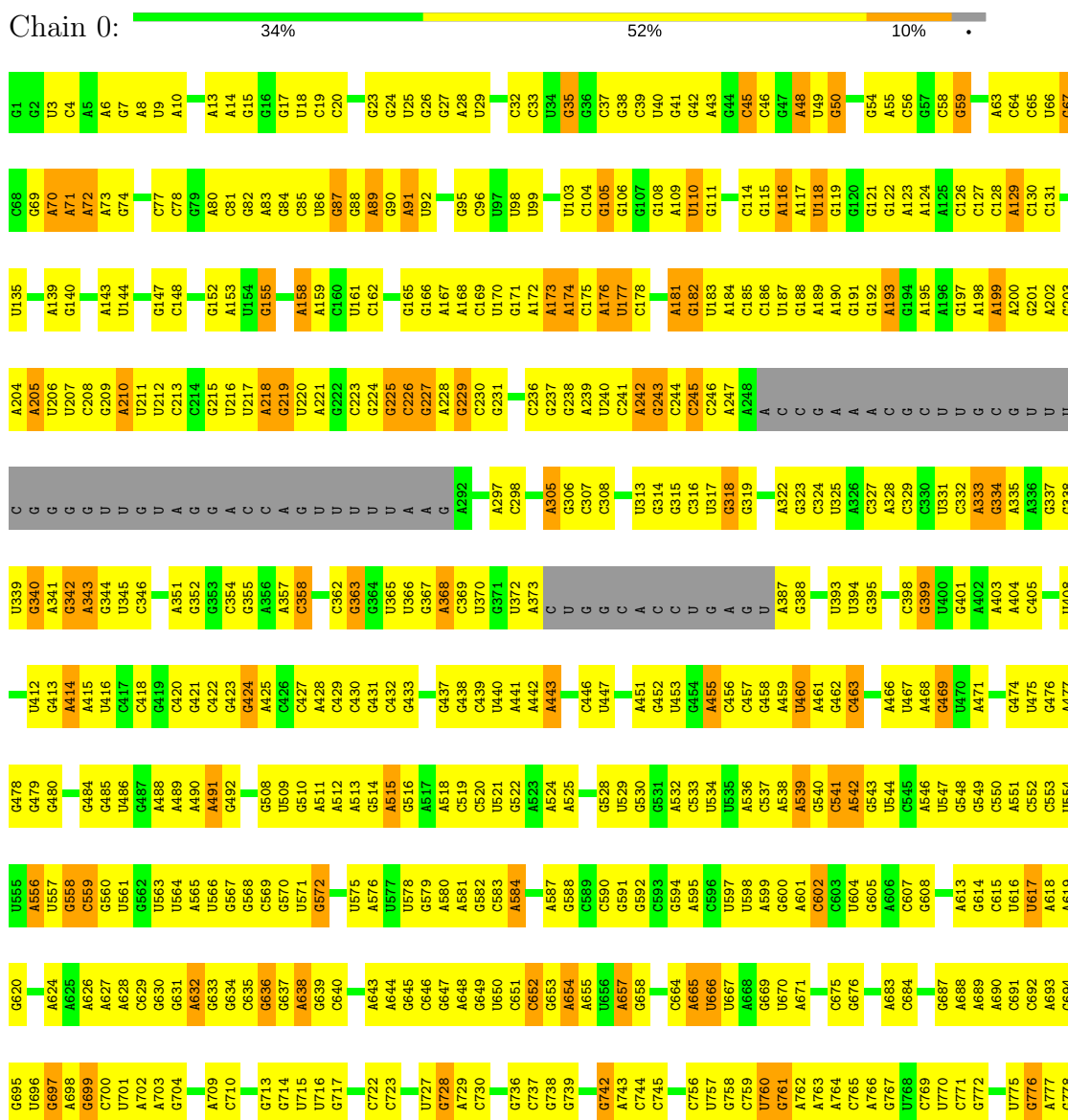
Mol	Chain	Residues	Atoms					ZeroOcc	AltConf	Trace
2	5	4	Total	C	N	O	P	0	0	0
			96	50	18	25	3			

3 Residue-property plots

These plots are drawn for all protein, RNA and DNA chains in the entry. The first graphic for a chain summarises the proportions of the various outlier classes displayed in the second graphic. The second graphic shows the sequence view annotated by issues in geometry and electron density. Residues are color-coded according to the number of geometric quality criteria for which they contain at least one outlier: green = 0, yellow = 1, orange = 2 and red = 3 or more. A red dot above a residue indicates a poor fit to the electron density ($RSRZ > 2$). Stretches of 2 or more consecutive residues without any outlier are shown as a green connector. Residues present in the sample, but not in the model, are shown in grey.

Note EDS was not executed.

• Molecule 1: 23S ribosomal RNA



U1909	G1818	U1732	C1655	A1582	G1504	G1436	U1357	A1290	U1144	G1047	G980	A913	G841	U779	
A1910	U1819	U1733	U1656	A1583	U1505	A1437	C1358	A1291	C1145	C1052	C981	U916	A842	U780	
G1912	A1820	A1657	A1658	G1594	G1508	A1441	G1359	A1292	G1146	G1053	A984	U917	G843	G781	
G1913	C1822	C1743	G1659	A1586	A1509	C1442	U1365	A1293	G1147	C1054	G985	U918	G844	G782	
G1914	C1825	C1744	G1660	A1587	A1510	G1443	A1366	G1223	G1148	C1055	A986	U919	U845	G783	
A1915	C1826	C1745	C1661	U1591	A1511	C1444	A1367	A1224	G1149	A1056	G987	G920	U846	U784	
G1916	U1826	A1746	G1662	U1592	A1512	A1445	G1368	G1225	C1150	U1057	G988	A921	C847	U785	
G1917	C1663	G1747	G1663	U1593	U1513	A1446	G1369	A1226	U1151	A1058	A991	A922	U852	U786	
C1829	G1664	U1748	C1664	C1593	U1514	A1447	G1370	C1302	A1154	G1065	A992	U925	G853	G788	
C1830	C1665	U1749	C1665	U1594	U1515	A1448	G1371	U1303	G1155	A1066	A994	U926	G854	G789	
G1831	A1750	A1750	G1666	A1595	A1516	C1449	A1372	U1307	U1156	G1067	A995	C926	G855	A790	
C1835	G1754	G1754	G1667	A1596	C1517	G1450	G1373	C1308	U1157	G1068	C996	G928	A856	G791	
C1836	G1755	G1755	G1668	A1597	C1518	C1451	G1377	A1233	A1162	G1069	C997	G929	U857	U792	
G1837	G1756	G1756	A1669	U1598	G1519	U1452	U1377	C1234	C1163	G1070	C998	A930	U858	G793	
C1838	G1670	G1670	G1669	U1599	G1520	U1453	G1377	C1235	C1164	U1071	C999	A931	U859	A794	
A1839	A1671	A1671	U1600	U1601	C1524	C1455	C1380	A1242	G1165	G1073	A999	G932	U860	A795	
G1840	G1672	G1672	U1602	G1602	U1527	C1456	C1381	G1243	A1166	C1074	A1001	G933	G861	A796	
G1841	U1676	U1676	A1603	A1603	G1528	A1457	G1382	U1244	A1167	C1075	A1002	G934	U862	A797	
A1842	A1763	A1763	A1604	A1604	C1529	U1458	G1383	U1245	G1168	U1076	C1003	G935	U863	G798	
G1843	A1764	A1764	A1605	A1605	U1530	U1459	A1386	G1248	U1172	A1081	A1004	A936	U864	U800	
U1765	U1766	U1766	U1606	C1606	A1531	C1463	G1387	G1249	G1173	C1087	U1005	C939	U865	C803	
U1766	U1766	U1766	U1607	U1607	A1532	A1464	G1388	G1250	U1177	C1088	U1006	C940	C870	C804	
U1767	U1767	U1767	U1608	U1608	A1533	G1465	G1389	A1250	G1085	G1089	A1007	C941	U871	G805	
U1768	U1768	U1768	U1609	G1609	G1533	C1466	A1391	G1251	G1086	C1090	U1008	U942	U872	A806	
U1769	U1769	U1769	U1610	U1610	U1539	U1467	U1392	C1252	U1179	C1091	U1009	U943	U873	A807	
U1770	U1770	U1770	U1611	U1611	U1539	A1468	G1393	C1253	A1179	C1092	U1010	G944	A874	C808	
U1771	U1771	U1771	U1612	C1540	C1540	A1469	U1326	U1257	A1180	C1093	U1011	G945	A875	C809	
U1772	U1772	U1772	G1613	G1613	G1543	G1470	U1327	G1258	C1181	C1094	U1012	G946	A876	U810	
U1773	U1773	U1773	C1614	C1614	A1544	C1471	G1398	A1259	U1182	C1095	U1013	G947	A877	G811	
U1774	U1774	U1774	C1615	C1615	A1545	C1472	C1399	U1260	U1183	C1096	U1014	G948	A878	G812	
U1775	U1775	U1775	G1616	G1616	G1546	U1473	U1329	G1261	C1184	C1097	U1015	G949	A879	G813	
U1776	U1776	U1776	U1617	U1617	C1546	A1474	U1330	U1262	U1185	U1093	U1016	G950	C878	G814	
U1777	U1777	U1777	U1618	U1618	U1547	U1475	G1331	G1263	G1186	C1098	U1017	G951	C879	A813	
U1778	U1778	U1778	U1619	U1619	U1548	U1476	G1332	C1264	A1187	G1099	U1018	G952	C880	A814	
U1779	U1779	U1779	U1620	C1620	U1549	U1477	G1333	C1265	A1188	A1022	U1019	G953	C881	A815	
U1780	U1780	U1780	U1621	C1621	U1550	U1478	U1334	G1266	U1189	G1100	U1020	G954	C882	U816	
U1781	U1781	U1781	U1622	G1622	C1551	U1479	U1335	G1267	C1190	C1114	U1021	G955	C883	A817	
U1782	U1782	U1782	U1623	C1623	G1552	U1480	U1336	A1267	G1191	A1025	U1022	G956	C884	G818	
U1783	U1783	U1783	U1624	A1624	C1553	U1481	G1337	U1268	A1192	C1026	U1023	G957	C885	G819	
U1784	U1784	U1784	U1625	A1625	C1554	U1482	G1338	G1269	G1193	C1027	U1024	G958	U890	U820	
U1785	U1785	U1785	U1626	C1626	A1561	A1486	G1414	U1270	U1194	C1028	G1025	G959	A891	A821	
U1786	U1786	U1786	G1627	C1627	G1562	C1487	A1415	C1271	U1195	U1122	U1026	G960	G	G822	
U1787	U1787	U1787	G1628	C1628	G1563	U1488	A1416	C1272	U1196	A1123	U1027	G961	G	U823	
U1788	U1788	U1788	G1629	C1629	G1564	U1489	C1417	G1273	G1197	C1127	U1028	G962	G	U824	
U1789	U1789	U1789	U1630	U1630	U1565	U1490	U1341	G1274	U1198	C1128	G1029	G963	C	C825	
U1790	U1790	U1790	U1631	C1631	A1566	U1491	U1342	C1275	U1199	G1129	U1030	G964	C	U826	
U1791	U1791	U1791	U1632	C1632	U1567	C1492	U1343	A1275	G1200	U1130	U1031	G965	C	C827	
U1792	U1792	U1792	U1633	C1633	U1568	U1493	C1344	A1276	G1201	U1131	G1032	G966	U	C828	
U1793	U1793	U1793	U1634	A1634	C1571	U1494	U1345	U1277	A1203	G1132	G1033	C967	A	C829	
U1794	U1794	U1794	U1635	G1635	C1572	U1495	U1346	U1278	G1204	G1133	G1034	C968	C	C830	
U1795	U1795	U1795	U1636	C1636	C1573	U1496	C1347	U1279	G1205	C1134	U1035	U969	C	G831	
U1796	U1796	U1796	U1637	C1637	U1574	U1497	C1348	U1280	G1206	G1135	A1036	A970	C	A832	
U1797	U1797	U1797	U1638	C1638	C1575	U1498	U1349	A1281	G1207	C1136	A1037	C971	A	A833	
U1798	U1798	U1798	U1639	C1639	C1576	U1499	G1350	U1282	A1137	A1137	A1038	C972	G	A834	
U1799	U1799	U1799	U1640	C1640	G1577	U1500	G1351	G1283	C1210	A1138	A1039	C973	C	U837	
U1800	U1800	U1800	U1641	C1641	U1578	U1501	G1352	U1284	G1211	A1139	A1040	U974	U	A838	
U1801	U1801	U1801	U1642	C1642	U1579	U1502	G1353	U1285	G1212	A1140	G1041	C975	A	U839	
U1802	U1802	U1802	U1643	C1643	U1580	U1503	U1433	U1286	C1213	U1141	U1042	C976	C	U840	
U1803	U1803	U1803	U1644	C1644	U1581	U1504	U1434	U1287	U1217	U1142	U1043	C977	C		
U1804	U1804	U1804	U1645	C1645	U1582	U1505	U1435	U1288		U1143	U1044	C978	C		
U1805	U1805	U1805	U1646	C1646	U1583	U1506	U1436	U1289			U1045	C979	C		
U1806	U1806	U1806	U1647	C1647	U1584	U1507	U1437				U1046	C980	C		
U1807	U1807	U1807	U1648	C1648	U1585	U1508	U1438								
U1808	U1808	U1808	U1649	C1649	U1586	U1509	U1439								
U1809	U1809	U1809	U1650	C1650	U1587	U1510	U1440								
U1810	U1810	U1810	U1651	C1651	U1588	U1511	U1441								
U1811	U1811	U1811	U1652	C1652	U1589	U1512	U1442								
U1812	U1812	U1812	U1653	C1653	U1590	U1513	U1443								
U1813	U1813	U1813	U1654	C1654	U1591	U1514	U1444								
U1814	U1814	U1814	U1655	C1655	U1592	U1515	U1445								
U1815	U1815	U1815	U1656	C1656	U1593	U1516	U1446								
U1816	U1816	U1816	U1657	C1657	U1594	U1517	U1447								
U1817	U1817	U1817	U1658	C1658	U1595	U1518	U1448								
U1818	U1818	U1818	U1659	C1659	U1596	U1519	U1449								
U1819	U1819	U1819	U1660	C1660	U1597	U1520	U1450								
U1820	U1820	U1820	U1661	C1661	U1598	U1521	U1451								
U1821	U1821	U1821	U1662	C1662	U1599	U1522	U1452								
U1822	U1822	U1822	U1663	C1663	U1600	U1523	U1453								
U1823	U1823	U1823	U1664	C1664	U1601	U1524	U1454								
U1824	U1824	U1824	U1665	C1665	U1602	U1525	U1455								
U1825	U1825	U1825	U1666	C1666	U1603	U1526	U1456								
U1826	U1826	U1826	U1667	C1667	U1604	U1527	U1457								
U1827	U1827	U1827	U1668	C1668	U1605	U1528	U1458								
U1828	U1828	U1828	U1669	C1669	U1606	U1529	U1459								
U1829	U1829	U1829	U1670	C1670	U1607	U1530	U1460								
U1830	U1830	U1830	U1671	C1671	U1608	U1531	U1461								
U1831	U1831	U1831	U1672	C1672	U1609	U1532	U1462								
U1832	U1832	U1832	U1673	C1673	U1610	U1533	U1463								
U1833	U1833	U1833	U1674	C1674	U1611	U1534	U1464								
U1834	U1834	U1834	U1675	C1675	U1612	U1535	U1465								
U1835	U1835	U1835	U1676	C1676	U1613	U1536	U1466								
U1836	U1836	U1836	U1677	C1677	U1614	U1537	U1467								
U1837	U1837	U1837	U1678	C1678	U1615	U1538	U1468								

G1982	G2055	G2132	A2204	C2274	C2358	G2425	C2491	G2555	A2623	G2707	A2785	G2871	G1985	G2056	G2133	A2205	C2275	C2359	G2426	C2492	G2556	A2624	G2708	A2786	G2872	G1986	G2057	G2134	C2206	C2276	C2361	G2427	C2493	G2557	A2625	G2709	A2787	G2873	G1993	G2058	G2135	U2211	U2212	U2213	U2214	G2217	G2218	G2219	G2220	G2221	U2222	U2223	U2224	G2225	A2226	G2227	U2228	G2229	G2234	G2235	G2236	G2237	G2238	G2239	A2240	U2241	C2242	C2243	C2244	A2245	A2246	A2247	A2248	U2249	G2250	U2251	G2255	G2256	A2257	G2258	G2259	C2260	G2261	C2262	A2265	A2266	A2267	G2268	G2269	U2270	C2271	A2272	C2273	U2274	U2275	U2276	U2277	U2278	U2279	U2280	U2281	U2282	U2283	U2284	U2285	U2286	U2287	A2288	C2289	C2290	C2291	C2292	C2293	U2298	A2299	G2300	A2301	G2302	A2307	A2308	G2309	G2310	U2311	A2312	G2313	A2314	A2315	G2316	G2317	U2318	G2319	G2320	C2321	C2322	U2323	G2324	A2325	C2326	A2401	U2402	C2403	A2404	C2405	G2406	G2407	G2408	A2409	U2410	U2411	A2412	A2413	A2414	A2418	C2419	G2420	C2421	C2422	G2423	G2424	G2425	G2426	G2427	G2428	G2429	G2430	G2431	G2432	G2433	G2434	G2435	G2436	G2437	A2438	U2439	C2440	C2444	C2445	C2446	C2447	A2448	A2449	A2450	G2451	C2454	A2455	U2456	A2457	U2458	C2459	G2460	G2463	G2464	G2465	G2466	A2467	G2468	G2469	U2470	U2471	U2472	G2473	G2474	C2475	A2476	C2477	C2478	U2479	C2480	G2481	A2482	U2483	G2484	U2485	C2486	G2487	G2488	G2489	A2690	C2691	A2692	U2693	G2694	C2695	G2698	C2699	U2615	U2616	G2617	A2618	G2619	G2620	U2621	G2622	G2623	G2624	U2625	G2626	G2627	G2628	G2629	G2630	G2631	G2632	G2633	G2634	G2635	G2636	G2637	G2638	G2639	G2640	G2641	G2642	G2643	G2644	G2645	G2646	U2651	G2652	A2658	C2659	C2660	C2661	U2666	C2667	U2668	C2669	C2670	C2674	U2675	G2676	U2677	C2678	G2679	U2680	A2681	C2682	C2689	A2690	C2691	A2692	U2693	G2694	C2695	U2703	U2704	U2705	U2706	U2707	U2708	U2709	U2710	U2711	U2712	U2713	U2714	U2715	U2716	U2717	U2718	U2719	U2720	U2721	U2722	U2723	U2724	U2725	U2726	U2727	U2728	U2729	U2730	U2731	U2732	U2733	U2734	U2735	U2736	U2737	U2740	U2741	U2742	U2743	U2744	U2745	U2754	U2755	U2756	U2757	U2758	U2759	U2760	U2761	U2762	U2768	U2769	U2770	U2771	U2772	U2773	U2774	U2775	U2776	U2777	U2778	U2779	U2780	U2781	U2782	U2783	U2784	U2785	U2786	U2787	U2788	U2789	U2790	U2791	U2792	U2793	U2794	U2795	U2796	U2797	U2798	U2799	U2800	A2801	G2805	G2806	U2807	U2808	A2809	A2810	U2811	A2812	C2815	C2816	G2821	U2822	G2823	C2824	A2825	C2826	U2830	A2831	G2832	C2833	U2836	C2837	U2841	C2842	A2843	G2847	A2848	G2852	U2853	G2854	C2855	A2858	U2859	C2860	A2861	G2862	U2863	G2867	G2001	A2002	A2003	U2004	U2005	G2006	G2007	U2008	U2009	G2010	U2011	A2012	G2013	A2014	G2015	A2016	U2017	G2018	C2019	G2020	G2021	C2022	C2023	U2024	A2025	C2026	C2027	G2028	G2029	G2032	C2033	A2034	G2035	G2036	A2037	C2038	G2039	A2043	G2044	A2045	C2046	C2047	U2048	C2049	G2050	U2051	G2052	G2053	G2054	G2055	G2056	G2057	G2058	A2059	U2060	G2061	U2062	U2069	G2070	G2076	G2077	G2078	G2079	U2080	U2081	G2082	G2083	G2084	G2085	U2086	G2089	C2094	G2095	U2096	A2097	C2103	G2106	U2107	G2110	C2118	U2119	C2120	U2121	C2125	U2126	U2127	U2128	C2129	G2201	G2202	G2203	G2204	G2205	G2206	G2207	G2208	G2209	G2210	G2211	G2212	G2213	G2214	G2215	G2216	G2217	G2218	G2219	G2220	G2221	G2222	G2223	G2224	G2225	G2226	G2227	G2228	G2229	G2230	G2231	G2232	G2233	G2234	G2235	G2236	G2237	G2238	G2239	G2240	G2241	G2242	G2243	G2244	G2245	G2246	G2247	G2248	G2249	G2250	G2251	G2252	G2253	G2254	G2255	G2256	G2257	G2258	G2259	G2260	G2261	G2262	G2263	G2264	G2265	G2266	G2267	G2268	G2269	G2270	G2271	G2272	G2273	G2274	G2275	G2276	G2277	G2278	G2279	G2280	G2281	G2282	G2283	G2284	G2285	G2286	G2287	G2288	G2289	G2290	G2291	G2292	G2293	G2294	G2295	G2296	G2297	G2298	G2299	G2300	G2301	G2302	G2303	G2304	G2305	G2306	G2307	G2308	G2309	G2310	G2311	G2312	G2313	G2314	G2315	G2316	G2317	G2318	G2319	G2320	G2321	G2322	G2323	G2324	G2325	G2326	G2327	G2328	G2329	G2330	G2331	G2332	G2333	G2334	G2335	G2336	G2337	G2338	G2339	G2340	G2341	G2342	G2343	G2344	G2345	G2346	G2347	G2348	G2349	G2350	G2351	G2352	G2353	G2354	G2355	G2356	G2357	G2358	G2359	G2360	G2361	G2362	G2363	G2364	G2365	G2366	G2367	G2368	G2369	G2370	G2371	G2372	G2373	G2374	G2375	G2376	G2377	G2378	G2379	G2380	C2381	C2382	C2383	G2384	U2385	G2388	G2389	A2390	A2391	G2392	G2393	G2394	C2395	A2396	A2397	U2398	A2401	U2402	C2403	A2404	C2405	G2406	G2407	G2408	A2409	U2410	U2411	A2412	A2413	A2414	A2418	C2419	G2420	C2421	C2422	G2423	G2424	G2425	G2426	G2427	G2428	G2429	G2430	G2431	G2432	G2433	G2434	G2435	G2436	G2437	A2438	U2439	C2440	C2444	C2445	C2446	C2447	A2448	A2449	A2450	G2451	C2454	A2455	U2456	A2457	U2458	C2459	G2460	G2463	G2464	G2465	G2466	A2467	G2468	G2469	U2470	U2471	U2472	G2473	G2474	C2475	A2476	C2477	C2478	U2479	C2480	G2481	A2482	U2483	G2484	U2485	C2486	G2487	G2488	G2489	A2690	C2691	A2692	U2693	G2694	C2695	G2698	C2699	U2615	U2616	G2617	A2618	G2619	G2620	U2621	G2622	G2623	G2624	U2625	G2626	G2627	G2628	G2629	G2630	G2631	G2632	G2633	G2634	G2635	G2636	G2637	G2638	G2639	G2640	G2641	G2642	G2643	G2644	G2645	G2646	U2651	G2652	A2658	C2659	C2660	C2661	U2666	C2667	U2668	C2669	C2670	C2674	U2675	G2676	U2677	C2678	G2679	U2680	A2681	C2682	C2689	A2690	C2691	A2692	U2693	G2694	C2695	U2703	U2704	U2705	U2706	U2707	U2708	U2709	U2710	U2711	U2712	U2713	U2714	U2715	U2716	U2717	U2718	U2719	U2720	U2721	U2722	U2723	U2724	U2725	U2726	U2727	U2728	U2729	U2730	U2731	U2732	U2733	U2734	U2735	U2736	U2737	U2740	U2741	U2742	U2743	U2744	U2745	U2754	U2755	U2756	U2757	U2758	U2759	U2760	U2761	U2762	U2768	U2769	U2770	U2771	U2772	U2773	U2774	U2775	U2776	U2777	U2778	U2779	U2780	U2781	U2782	U2783	U2784	U2785	U2786	U2787	U2788	U2789	U2790	U2791	U2792	U2793	U2794	U2795	U2796	U2797	U2798	U2799	U2800	A2801	G2805	G2806	U2807	U2808	A2809	A2810	U2811	A2812	C2815	C2816	G2821	U2822	G2823	C2824	A2825	C2826	U2830	A2831	G2832	C2833	U2836	C2837	U2841	C2842	A2843	G2847	A2848	G2852	U2853	G2854	C2855	A2858	U2859	C2860	A2861	G2862	U2863	G2867	G2001	A2002	A2003	U2004	U2005	G2006	G2007	U2008	U2009	G2010	U2011	A2012	G2013	A2014	G2015	A2016	U2017	G2018	C2019	G2020	G2021	C2022	C2023	U2024	A2025	C2026	C2027	G2028	G2029	G2032	C2033	A2034	G2035	G2036	A2037	C2038	G2039	A2043	G2044	A2045	C2046	C2047	U2048	C2049	G2050	U2051	G2052	G2053	G2054	G2055	G2056	G2057	G2058	A2059	U2060	G2061	U2062	U2069	G2070	G2076	G2077	G2078	G2079	U2080	U2081	G2082	G2083	G2084	G2085	U2086	G2089	C2094	G2095	U2096	A2097	C2103	G2106	U2107	G2110	C2118	U2119	C2120	U2121	C2125	U2126	U2127	U2128	C2129	G2201	G2202	G2203	G2204	G2205	G2206	G2207	G2208	G2209	G2210	G2211	G2212	G2213	G2214	G2215	G2216	G2217	G2218	G2219	G2220	G2221	G2222	G2223	G2224	G2225	G2226	G2227	G2228	G2229	G2230	G2231	G2232	G2233	G2234	G2235	G2236	G2237	G2238	G2239	G2240	G2241	G2242	G2243	G2244	G2245	G2246	G2247	G2248	G2249	G2250	G2251	G2252	G2253	G2254	G2255	G2256	G2257	G2258	G2259	G2260	G2261	G2262	G2263	G2264	G2265	G2266	G2267	G2268	G2269	G2270	G2271	G2272	G2273	G2274	G2275	G2276	G2277	G2278	G2279	G2280	G2281	G2282	G2283	G2284	G2285	G2286	G2287	G2288	G2289	G2290	G2291	G2292	G2293	G2294	G2295	G2296	G2297	G2298	G2299	G2300	G2301	G2302	G2303	G2304	G2305	G2306	G2307	G2308	G2309	G2310	G2311	G2312	G2313	G2314	G2315	G2316	G2317	G2318	G2319	G2320	G2321	G2322	G2323	G2324	G2325	G2326	G2327	G2328	G2329	G2330	G2331	G2332	G2333	G2334	G2335	G2336	G2337	G2338	G2339	G2340	G2341	G2342	G2343	G2344	G2345	G2346	G2347	G2348	G2349	G2350	G2351	G2352	G2353	G2354	G2355	G2356	G2357	G2358	G2359	G2360	G2361	G2362	G2363	G2364	G2365	G2366	G2367	G2368	G2369	G2370	G2371	G2372	G2373	G2374	G2375	G2376	G2377	G2378	G2379	G2380	C2381	C2382	C2383	G2384	U2385	G2388	G2389	A2390	A2391	G2392	G2393	G2394	C2395	A2396	A2397	U2398	A2401	U2402	C2403	A2404	C2405	G2406	G2407	G2408	A2409	U2410	U2411	A2412	A2413	A2414	A2418	C2419	G2420	C2421	C2422	G2423	G2424	G2425	G2426	G2427	G2428	G2429	G2430	G2431	G2432	G2433	G2434	G2435	G2436	G2437	A2438	U2439	C2440	C2444	C2445	C2446	C2447	A2448	A2449	A2450	G2451	C2454	A2455	U2456	A2457	U2458	C2459	G2460	G2463	G2464	G2465	G2466	A2467	G2468	G2469	U2470	U2471	U2472	G2473	G2474	C2475	A2476	C2477	C2478	U2479	C2480	G2481	A2482	U2483	G2484	U2485	C2486	G2487	G2488	G2489	A2690	C2691	A2692
-------	-------	-------	-------	-------	-------	-------	-------	-------	-------	-------	-------	-------	-------	-------	-------	-------	-------	-------	-------	-------	-------	-------	-------	-------	-------	-------	-------	-------	-------	-------	-------	-------	-------	-------	-------	-------	-------	-------	-------	-------	-------	-------	-------	-------	-------	-------	-------	-------	-------	-------	-------	-------	-------	-------	-------	-------	-------	-------	-------	-------	-------	-------	-------	-------	-------	-------	-------	-------	-------	-------	-------	-------	-------	-------	-------	-------	-------	-------	-------	-------	-------	-------	-------	-------	-------	-------	-------	-------	-------	-------	-------	-------	-------	-------	-------	-------	-------	-------	-------	-------	-------	-------	-------	-------	-------	-------	-------	-------	-------	-------	-------	-------	-------	-------	-------	-------	-------	-------	-------	-------	-------	-------	-------	-------	-------	-------	-------	-------	-------	-------	-------	-------	-------	-------	-------	-------	-------	-------	-------	-------	-------	-------	-------	-------	-------	-------	-------	-------	-------	-------	-------	-------	-------	-------	-------	-------	-------	-------	-------	-------	-------	-------	-------	-------	-------	-------	-------	-------	-------	-------	-------	-------	-------	-------	-------	-------	-------	-------	-------	-------	-------	-------	-------	-------	-------	-------	-------	-------	-------	-------	-------	-------	-------	-------	-------	-------	-------	-------	-------	-------	-------	-------	-------	-------	-------	-------	-------	-------	-------	-------	-------	-------	-------	-------	-------	-------	-------	-------	-------	-------	-------	-------	-------	-------	-------	-------	-------	-------	-------	-------	-------	-------	-------	-------	-------	-------	-------	-------	-------	-------	-------	-------	-------	-------	-------	-------	-------	-------	-------	-------	-------	-------	-------	-------	-------	-------	-------	-------	-------	-------	-------	-------	-------	-------	-------	-------	-------	-------	-------	-------	-------	-------	-------	-------	-------	-------	-------	-------	-------	-------	-------	-------	-------	-------	-------	-------	-------	-------	-------	-------	-------	-------	-------	-------	-------	-------	-------	-------	-------	-------	-------	-------	-------	-------	-------	-------	-------	-------	-------	-------	-------	-------	-------	-------	-------	-------	-------	-------	-------	-------	-------	-------	-------	-------	-------	-------	-------	-------	-------	-------	-------	-------	-------	-------	-------	-------	-------	-------	-------	-------	-------	-------	-------	-------	-------	-------	-------	-------	-------	-------	-------	-------	-------	-------	-------	-------	-------	-------	-------	-------	-------	-------	-------	-------	-------	-------	-------	-------	-------	-------	-------	-------	-------	-------	-------	-------	-------	-------	-------	-------	-------	-------	-------	-------	-------	-------	-------	-------	-------	-------	-------	-------	-------	-------	-------	-------	-------	-------	-------	-------	-------	-------	-------	-------	-------	-------	-------	-------	-------	-------	-------	-------	-------	-------	-------	-------	-------	-------	-------	-------	-------	-------	-------	-------	-------	-------	-------	-------	-------	-------	-------	-------	-------	-------	-------	-------	-------	-------	-------	-------	-------	-------	-------	-------	-------	-------	-------	-------	-------	-------	-------	-------	-------	-------	-------	-------	-------	-------	-------	-------	-------	-------	-------	-------	-------	-------	-------	-------	-------	-------	-------	-------	-------	-------	-------	-------	-------	-------	-------	-------	-------	-------	-------	-------	-------	-------	-------	-------	-------	-------	-------	-------	-------	-------	-------	-------	-------	-------	-------	-------	-------	-------	-------	-------	-------	-------	-------	-------	-------	-------	-------	-------	-------	-------	-------	-------	-------	-------	-------	-------	-------	-------	-------	-------	-------	-------	-------	-------	-------	-------	-------	-------	-------	-------	-------	-------	-------	-------	-------	-------	-------	-------	-------	-------	-------	-------	-------	-------	-------	-------	-------	-------	-------	-------	-------	-------	-------	-------	-------	-------	-------	-------	-------	-------	-------	-------	-------	-------	-------	-------	-------	-------	-------	-------	-------	-------	-------	-------	-------	-------	-------	-------	-------	-------	-------	-------	-------	-------	-------	-------	-------	-------	-------	-------	-------	-------	-------	-------	-------	-------	-------	-------	-------	-------	-------	-------	-------	-------	-------	-------	-------	-------	-------	-------	-------	-------	-------	-------	-------	-------	-------	-------	-------	-------	-------	-------	-------	-------	-------	-------	-------	-------	-------	-------	-------	-------	-------	-------	-------	-------	-------	-------	-------	-------	-------	-------	-------	-------	-------	-------	-------	-------	-------	-------	-------	-------	-------	-------	-------	-------	-------	-------	-------	-------	-------	-------	-------	-------	-------	-------	-------	-------	-------	-------	-------	-------	-------	-------	-------	-------	-------	-------	-------	-------	-------	-------	-------	-------	-------	-------	-------	-------	-------	-------	-------	-------	-------	-------	-------	-------	-------	-------	-------	-------	-------	-------	-------	-------	-------	-------	-------	-------	-------	-------	-------	-------	-------	-------	-------	-------	-------	-------	-------	-------	-------	-------	-------	-------	-------	-------	-------	-------	-------	-------	-------	-------	-------	-------	-------	-------	-------	-------	-------	-------	-------	-------	-------	-------	-------	-------	-------	-------	-------	-------	-------	-------	-------	-------	-------	-------	-------	-------	-------	-------	-------	-------	-------	-------	-------	-------	-------	-------	-------	-------	-------	-------	-------	-------	-------	-------	-------	-------	-------	-------	-------	-------	-------	-------	-------	-------	-------	-------	-------	-------	-------	-------	-------	-------	-------	-------	-------	-------	-------	-------	-------	-------	-------	-------	-------	-------	-------	-------	-------	-------	-------	-------	-------	-------	-------	-------	-------	-------	-------	-------	-------	-------	-------	-------	-------	-------	-------	-------	-------	-------	-------	-------	-------	-------	-------	-------	-------	-------	-------	-------	-------	-------	-------	-------	-------	-------	-------	-------	-------	-------	-------	-------	-------	-------	-------	-------	-------	-------	-------	-------	-------	-------	-------	-------	-------	-------	-------	-------	-------	-------	-------	-------	-------	-------	-------	-------	-------	-------	-------	-------	-------	-------	-------	-------	-------	-------	-------	-------	-------	-------	-------	-------	-------	-------	-------	-------	-------	-------	-------	-------	-------	-------	-------	-------	-------	-------	-------	-------	-------	-------	-------	-------	-------	-------	-------	-------	-------	-------	-------	-------	-------	-------	-------	-------	-------	-------	-------	-------	-------	-------	-------	-------	-------	-------	-------	-------	-------	-------	-------	-------	-------	-------	-------	-------	-------	-------	-------	-------	-------	-------	-------	-------	-------	-------	-------	-------	-------	-------	-------	-------	-------	-------	-------	-------	-------	-------	-------	-------	-------	-------	-------	-------	-------	-------	-------	-------	-------	-------	-------	-------	-------	-------	-------	-------	-------	-------	-------	-------	-------	-------	-------	-------	-------	-------	-------	-------	-------	-------	-------	-------	-------	-------	-------	-------	-------	-------	-------	-------	-------	-------	-------	-------	-------	-------	-------	-------	-------	-------	-------	-------	-------	-------	-------	-------	-------	-------	-------	-------	-------	-------	-------	-------	-------	-------	-------	-------	-------	-------	-------	-------	-------	-------	-------	-------	-------	-------	-------	-------	-------	-------	-------	-------	-------	-------	-------	-------	-------	-------	-------	-------	-------	-------	-------	-------	-------	-------	-------	-------	-------	-------	-------	-------	-------	-------	-------	-------	-------	-------	-------	-------	-------	-------	-------	-------	-------	-------	-------	-------	-------	-------	-------	-------	-------	-------	-------	-------	-------	-------	-------	-------	-------	-------	-------	-------	-------	-------	-------	-------	-------	-------	-------	-------	-------	-------	-------	-------	-------	-------	-------	-------	-------	-------	-------	-------	-------	-------	-------	-------	-------	-------	-------	-------	-------	-------	-------	-------	-------	-------	-------	-------	-------	-------	-------	-------	-------	-------	-------	-------	-------	-------	-------	-------	-------	-------	-------	-------	-------	-------	-------	-------	-------	-------	-------	-------	-------	-------	-------	-------	-------	-------	-------	-------	-------	-------	-------	-------	-------	-------	-------	-------	-------	-------	-------	-------	-------	-------	-------	-------	-------	-------	-------	-------	-------	-------	-------	-------	-------	-------	-------	-------	-------	-------	-------	-------	-------	-------	-------	-------	-------	-------	-------	-------	-------	-------	-------	-------	-------	-------	-------	-------	-------	-------	-------	-------	-------	-------	-------	-------	-------	-------	-------	-------	-------	-------	-------	-------	-------	-------	-------	-------	-------	-------	-------	-------	-------	-------	-------	-------	-------	-------	-------	-------	-------	-------	-------	-------	-------	-------	-------	-------	-------	-------	-------	-------	-------	-------	-------	-------	-------	-------	-------	-------	-------	-------	-------	-------	-------	-------	-------	-------	-------	-------	-------	-------	-------	-------	-------	-------	-------	-------	-------	-------	-------	-------	-------	-------	-------	-------	-------	-------	-------	-------	-------	-------	-------	-------	-------	-------	-------	-------	-------	-------	-------	-------	-------	-------	-------	-------	-------	-------

4 Data and refinement statistics

Xtriage (Phenix) and EDS were not executed - this section is therefore incomplete.

Property	Value	Source
Space group	I 2 2 2	Depositor
Cell constants a, b, c, α , β , γ	169.90Å 410.40Å 697.10Å 90.00° 90.00° 90.00°	Depositor
Resolution (Å)	15.00 – 3.70	Depositor
% Data completeness (in resolution range)	(Not available) (15.00-3.70)	Depositor
R_{merge}	(Not available)	Depositor
R_{sym}	0.16	Depositor
Refinement program	CNS	Depositor
R, R_{free}	0.283 , 0.297	Depositor
Estimated twinning fraction	No twinning to report.	Xtriage
Total number of atoms	59455	wwPDB-VP
Average B, all atoms (Å ²)	77.0	wwPDB-VP

5 Model quality [i](#)

5.1 Standard geometry [i](#)

Bond lengths and bond angles in the following residue types are not validated in this section: PPU

The Z score for a bond length (or angle) is the number of standard deviations the observed value is removed from the expected value. A bond length (or angle) with $|Z| > 5$ is considered an outlier worth inspection. RMSZ is the root-mean-square of all Z scores of the bond lengths (or angles).

Mol	Chain	Bond lengths		Bond angles	
		RMSZ	$\# Z > 5$	RMSZ	$\# Z > 5$
1	0	0.14	0/66467	0.63	0/103673
2	5	0.21	0/65	0.56	0/99
All	All	0.14	0/66532	0.63	0/103772

Chiral center outliers are detected by calculating the chiral volume of a chiral center and verifying if the center is modelled as a planar moiety or with the opposite hand. A planarity outlier is detected by checking planarity of atoms in a peptide group, atoms in a mainchain group or atoms of a sidechain that are expected to be planar.

Mol	Chain	#Chirality outliers	#Planarity outliers
1	0	0	1

There are no bond length outliers.

There are no bond angle outliers.

There are no chirality outliers.

All (1) planarity outliers are listed below:

Mol	Chain	Res	Type	Group
1	0	873	U	Sidechain

5.2 Too-close contacts [i](#)

In the following table, the Non-H and H(model) columns list the number of non-hydrogen atoms and hydrogen atoms in the chain respectively. The H(added) column lists the number of hydrogen atoms added and optimized by MolProbity. The Clashes column lists the number of clashes within the asymmetric unit, whereas Symm-Clashes lists symmetry related clashes.

Mol	Chain	Non-H	H(model)	H(added)	Clashes	Symm-Clashes
1	0	59359	0	29917	1732	0
2	5	96	0	62	1	0
All	All	59455	0	29979	1732	0

The all-atom clashscore is defined as the number of clashes found per 1000 atoms (including hydrogen atoms). The all-atom clashscore for this structure is 19.

All (1732) close contacts within the same asymmetric unit are listed below, sorted by their clash magnitude.

Atom-1	Atom-2	Interatomic distance (Å)	Clash overlap (Å)
1:0:940:G:H3'	1:0:941:U:H5''	1.22	1.14
1:0:1141:U:H3	1:0:2008:C:H5''	1.20	1.05
1:0:1073:G:H2'	1:0:1074:G:H4'	1.40	1.00
1:0:2769:C:H2'	1:0:2867:G:H22	1.21	0.99
1:0:2668:U:H4'	1:0:2669:C:H5'	1.45	0.97
1:0:688:A:H62	1:0:816:U:H3	1.09	0.97
1:0:1252:C:H2'	1:0:1253:C:H5''	1.47	0.96
1:0:2636:A:H62	1:0:2643:G:H21	1.12	0.96
1:0:58:C:H3'	1:0:59:G:H5''	1.48	0.96
1:0:1182:U:H2'	1:0:1183:C:H5''	1.47	0.95
1:0:1086:C:H2'	1:0:1087:C:H5''	1.49	0.94
1:0:1496:G:H1	1:0:1527:G:H1	1.14	0.94
1:0:1572:C:H2'	1:0:1573:G:H5''	1.48	0.94
1:0:1747:G:H4'	1:0:1749:G:H1'	1.48	0.94
1:0:471:A:H62	1:0:480:G:H21	1.13	0.94
1:0:221:A:H62	1:0:231:G:H21	1.15	0.94
1:0:225:G:H3'	1:0:226:C:H5'	1.47	0.93
1:0:1953:A:H1'	1:0:1955:G:H1'	1.52	0.92
1:0:847:C:H41	1:0:955:G:H21	1.17	0.92
1:0:1312:G:H5''	1:0:1313:U:H5'	1.52	0.91
1:0:166:G:H21	1:0:184:A:H62	1.12	0.91
1:0:1223:G:H21	1:0:1225:G:H21	0.92	0.91
1:0:831:G:H21	1:0:1203:A:H62	1.16	0.90
1:0:929:A:H3'	1:0:930:A:H5''	1.52	0.90
1:0:789:G:H21	1:0:806:A:H62	1.13	0.89
1:0:1915:A:H62	1:0:1951:G:H21	1.20	0.89
1:0:104:C:H2'	1:0:105:G:H5''	1.56	0.88
1:0:1656:U:H2'	1:0:1657:A:H5''	1.56	0.87
1:0:2633:A:H4'	1:0:2634:G:H4'	1.57	0.87
1:0:1199:U:H3'	1:0:1200:G:H5''	1.55	0.87
1:0:367:G:H2'	1:0:368:A:H5''	1.55	0.87
1:0:403:A:H4'	1:0:425:A:H5'	1.57	0.86

Continued on next page...

Continued from previous page...

Atom-1	Atom-2	Interatomic distance (Å)	Clash overlap (Å)
1:0:128:C:H2'	1:0:129:A:H5''	1.58	0.86
1:0:2548:G:H2'	1:0:2549:G:H5''	1.58	0.86
1:0:1223:G:H21	1:0:1225:G:N2	1.74	0.85
1:0:1034:U:H1'	1:0:1133:G:H5''	1.60	0.84
1:0:1964:A:H3'	1:0:1965:U:H5'	1.60	0.84
1:0:2047:C:H42	1:0:2425:G:H1	1.25	0.83
1:0:1436:G:H1'	1:0:1508:G:H21	1.41	0.83
1:0:2607:C:H3'	1:0:2608:A:H5'	1.58	0.82
1:0:2794:G:H3'	1:0:2796:A:H62	1.43	0.82
1:0:460:U:H3	1:0:592:G:H1'	1.43	0.82
1:0:2081:U:H2'	1:0:2082:C:H5''	1.62	0.81
1:0:2806:G:H1'	1:0:2858:A:H2'	1.62	0.81
1:0:2198:U:H3'	1:0:2199:C:H5''	1.62	0.81
1:0:88:G:H3'	1:0:89:A:H5''	1.61	0.81
1:0:2522:G:H21	1:0:2625:U:H5''	1.45	0.81
1:0:940:G:H3'	1:0:941:U:C5'	2.09	0.81
1:0:2769:C:H2'	1:0:2867:G:N2	1.96	0.81
1:0:9:U:H3	1:0:2608:A:H62	1.29	0.80
1:0:109:A:H3'	1:0:110:U:H5''	1.62	0.80
1:0:2426:G:H5'	1:0:2480:C:H41	1.47	0.80
1:0:1223:G:N2	1:0:1225:G:H21	1.76	0.79
1:0:1141:U:N3	1:0:2008:C:H5''	1.97	0.79
1:0:2700:U:H3	1:0:2848:A:N6	1.81	0.79
1:0:2491:C:H2'	1:0:2492:G:H5''	1.64	0.79
1:0:1811:A:O2'	1:0:1812:U:H5''	1.82	0.79
1:0:918:A:H2'	1:0:919:U:H5''	1.64	0.79
1:0:176:A:H1'	1:0:2221:G:H21	1.48	0.78
1:0:2227:C:H2'	1:0:2228:U:H5'	1.66	0.78
1:0:70:A:O2'	1:0:72:A:H5''	1.84	0.78
1:0:1432:G:H21	1:0:1596:A:H62	1.28	0.77
1:0:1188:A:H62	1:0:1189:G:H21	1.31	0.77
1:0:181:A:H5''	1:0:182:G:OP1	1.84	0.77
1:0:2770:A:H5'	1:0:2867:G:H22	1.49	0.76
1:0:2261:G:H4'	1:0:2262:C:OP2	1.86	0.76
1:0:689:A:H61	1:0:815:A:H61	1.31	0.76
1:0:2059:U:H5	1:0:2575:U:H3	1.31	0.76
1:0:542:A:H2'	1:0:543:G:H5'	1.67	0.76
1:0:652:C:H42	1:0:657:A:H61	1.32	0.76
1:0:688:A:N6	1:0:816:U:H3	1.85	0.75
1:0:69:G:H5''	1:0:70:A:OP1	1.87	0.75
1:0:2624:G:H4'	1:0:2712:G:H2'	1.69	0.75

Continued on next page...

Continued from previous page...

Atom-1	Atom-2	Interatomic distance (Å)	Clash overlap (Å)
1:0:2096:U:H2'	1:0:2097:A:H5''	1.69	0.75
1:0:2503:G:H3'	1:0:2504:G:H5''	1.69	0.75
1:0:2548:G:C2'	1:0:2549:G:H5''	2.17	0.74
1:0:616:U:H2'	1:0:617:U:H5''	1.68	0.74
1:0:109:A:C3'	1:0:110:U:H5''	2.18	0.74
1:0:1473:U:H4'	1:0:1474:A:C8	2.23	0.74
1:0:218:A:O2'	1:0:219:G:H4'	1.87	0.74
1:0:1252:C:C2'	1:0:1253:C:H5''	2.18	0.73
1:0:2700:U:H3	1:0:2848:A:H62	1.36	0.73
1:0:1182:U:C2'	1:0:1183:C:H5''	2.17	0.73
1:0:1001:A:H62	1:0:1200:G:H1'	1.53	0.73
1:0:1572:C:C2'	1:0:1573:G:H5''	2.18	0.72
1:0:2241:U:H1'	1:0:2307:A:H1'	1.70	0.72
1:0:26:G:N2	1:0:524:A:H62	1.88	0.72
1:0:69:G:H4'	1:0:70:A:O5'	1.87	0.72
1:0:795:A:H4'	1:0:796:A:N7	2.03	0.72
1:0:471:A:H62	1:0:480:G:N2	1.86	0.72
1:0:202:A:H2'	1:0:203:G:O4'	1.88	0.71
1:0:2721:A:H62	1:0:2743:G:H21	1.38	0.71
1:0:878:C:H42	1:0:921:A:H62	1.37	0.71
1:0:1528:C:H2'	1:0:1529:C:H5''	1.71	0.71
1:0:1908:C:H2'	1:0:1909:U:H4'	1.72	0.71
1:0:1807:A:O2'	1:0:1808:C:H4'	1.89	0.71
1:0:2691:C:H3'	1:0:2692:A:H5''	1.73	0.71
1:0:319:G:H21	1:0:340:G:H21	1.39	0.71
1:0:65:C:H2'	1:0:66:U:H5'	1.72	0.71
1:0:1479:G:N2	1:0:1543:G:H21	1.88	0.71
1:0:2503:G:C3'	1:0:2504:G:H5''	2.21	0.71
1:0:1196:G:H2'	1:0:1197:U:O4'	1.91	0.71
1:0:1023:U:H1'	1:0:1154:A:N7	2.06	0.71
1:0:2380:U:H2'	1:0:2381:A:H5'	1.72	0.71
1:0:1047:G:H1	1:0:1130:U:H3	1.37	0.70
1:0:1882:G:H21	1:0:1885:C:N4	1.89	0.70
1:0:2510:A:H61	1:0:2641:A:N6	1.89	0.70
1:0:1373:G:H22	1:0:2192:U:H3	1.37	0.70
1:0:1621:C:H4'	1:0:1626:A:H61	1.56	0.70
1:0:1953:A:H1'	1:0:1955:G:C1'	2.21	0.70
1:0:1021:A:H1'	1:0:1164:C:H1'	1.72	0.70
1:0:514:G:N3	1:0:514:G:H2'	2.06	0.70
1:0:181:A:H4'	1:0:182:G:H4'	1.74	0.70
1:0:33:C:H42	1:0:466:A:H61	1.39	0.70

Continued on next page...

Continued from previous page...

Atom-1	Atom-2	Interatomic distance (Å)	Clash overlap (Å)
1:0:2510:A:H61	1:0:2641:A:H61	1.39	0.70
1:0:2522:G:N2	1:0:2625:U:H5''	2.05	0.70
1:0:2759:U:H4'	1:0:2760:G:OP2	1.89	0.70
1:0:515:A:H2'	1:0:516:G:H5'	1.73	0.70
1:0:1529:C:H2'	1:0:1530:U:O4'	1.92	0.70
1:0:576:A:H2	1:0:580:A:H62	1.40	0.70
1:0:1809:G:H2'	1:0:1810:U:O4'	1.92	0.69
1:0:1139:A:H1'	1:0:2496:C:H5'	1.73	0.69
1:0:2570:C:H2'	1:0:2571:G:C8	2.27	0.69
1:0:66:U:H2'	1:0:67:G:N7	2.07	0.69
1:0:2808:U:H3'	1:0:2809:A:H5'	1.74	0.69
1:0:1838:G:H2'	1:0:1839:A:H5'	1.75	0.69
1:0:538:A:H2'	1:0:539:A:H5''	1.74	0.69
1:0:800:U:H3'	1:0:804:C:N4	2.08	0.69
1:0:951:G:H2'	1:0:952:A:H5''	1.73	0.69
1:0:2486:C:H4'	2:5:34:C:O2'	1.93	0.69
1:0:1923:U:H4'	1:0:1948:C:H41	1.58	0.69
1:0:65:C:C2'	1:0:66:U:H5'	2.23	0.69
1:0:1199:U:H3'	1:0:1200:G:C5'	2.22	0.68
1:0:2727:G:H1	1:0:2735:C:H5''	1.59	0.68
1:0:1188:A:N6	1:0:1189:G:H21	1.90	0.68
1:0:2495:G:H2'	1:0:2496:C:C6	2.29	0.68
1:0:2570:C:H2'	1:0:2571:G:H8	1.58	0.68
1:0:2607:C:H1'	1:0:2761:A:H2'	1.76	0.68
1:0:1500:U:H3	1:0:1520:G:H22	1.42	0.68
1:0:653:G:H2'	1:0:654:A:H4'	1.76	0.68
1:0:1260:A:N6	1:0:1262:U:H1'	2.09	0.68
1:0:2015:G:O2'	1:0:2016:A:OP1	2.12	0.68
1:0:1791:C:O2'	1:0:1793:A:H5'	1.94	0.68
1:0:1955:G:H2'	1:0:1956:G:H5'	1.75	0.68
1:0:1978:U:H3'	1:0:1979:C:H5''	1.75	0.68
1:0:941:U:H2'	1:0:942:U:O4'	1.94	0.68
1:0:2095:G:H2'	1:0:2096:U:H5''	1.74	0.67
1:0:2058:U:H5'	1:0:2576:G:H1'	1.74	0.67
1:0:1749:G:O6	1:0:2674:C:H4'	1.94	0.67
1:0:813:A:O2'	1:0:815:A:H5'	1.94	0.67
1:0:225:G:H3'	1:0:226:C:C5'	2.24	0.67
1:0:367:G:C2'	1:0:368:A:H5''	2.24	0.67
1:0:58:C:H3'	1:0:59:G:C5'	2.22	0.67
1:0:2680:U:H3'	1:0:2681:A:H5'	1.76	0.67
1:0:1474:A:H2'	1:0:1475:U:H5'	1.77	0.67

Continued on next page...

Continued from previous page...

Atom-1	Atom-2	Interatomic distance (Å)	Clash overlap (Å)
1:0:1915:A:H62	1:0:1951:G:N2	1.91	0.67
1:0:584:A:H4'	1:0:2479:U:H5'	1.76	0.67
1:0:1181:C:H2'	1:0:1182:U:H5''	1.76	0.67
1:0:1191:G:H2'	1:0:1192:A:H8	1.59	0.67
1:0:1086:C:C2'	1:0:1087:C:H5''	2.24	0.67
1:0:2768:C:H2'	1:0:2769:C:O4'	1.95	0.67
1:0:1685:A:H1'	1:0:1686:A:C5	2.29	0.66
1:0:805:G:H5''	1:0:806:A:O5'	1.95	0.66
1:0:1746:A:H2'	1:0:1747:G:H5'	1.77	0.66
1:0:2491:C:C2'	1:0:2492:G:H5''	2.25	0.66
1:0:323:G:H5'	1:0:342:G:C6	2.30	0.66
1:0:1312:G:H5'	1:0:1314:A:H1'	1.76	0.66
1:0:588:G:H4'	1:0:2001:G:H5''	1.78	0.66
1:0:1487:C:H2'	1:0:1488:G:H8	1.60	0.66
1:0:2324:G:H4'	1:0:2326:C:H5''	1.78	0.66
1:0:2483:U:H1'	1:0:2551:A:C2	2.31	0.66
1:0:665:A:H3'	1:0:666:U:H5''	1.78	0.66
1:0:1352:G:H2'	1:0:1353:A:H8	1.60	0.66
1:0:1686:A:N3	1:0:1686:A:H2'	2.10	0.66
1:0:805:G:H4'	1:0:806:A:OP2	1.96	0.66
1:0:583:C:N3	1:0:2016:A:H4'	2.11	0.66
1:0:2499:C:H41	1:0:2521:A:H2	1.41	0.65
1:0:1188:A:H62	1:0:1189:G:N2	1.93	0.65
1:0:1888:C:H5''	1:0:1889:G:H5''	1.79	0.65
1:0:45:C:H5''	1:0:192:G:N7	2.11	0.65
1:0:651:C:H2'	1:0:652:C:H5''	1.78	0.65
1:0:652:C:H42	1:0:657:A:N6	1.95	0.65
1:0:824:U:H1'	1:0:1264:C:H1'	1.77	0.65
1:0:1195:U:H2'	1:0:1196:G:C8	2.32	0.65
1:0:70:A:O2'	1:0:72:A:OP2	2.12	0.65
1:0:175:C:H1'	1:0:2413:A:H61	1.62	0.65
1:0:1938:U:O2'	1:0:1939:U:OP1	2.12	0.65
1:0:236:C:H1'	1:0:632:A:O2'	1.97	0.65
1:0:2245:A:H4'	1:0:2246:A:C8	2.32	0.65
1:0:974:U:H1'	1:0:2229:G:H21	1.59	0.65
1:0:104:C:C2'	1:0:105:G:H5''	2.27	0.64
1:0:13:A:H1'	1:0:536:A:N6	2.13	0.64
1:0:1679:U:C3'	1:0:1680:U:H5''	2.27	0.64
1:0:1679:U:H3'	1:0:1680:U:H5''	1.77	0.64
1:0:2198:U:C3'	1:0:2199:C:H5''	2.27	0.64
1:0:2404:A:O2'	1:0:2405:A:OP2	2.15	0.64

Continued on next page...

Continued from previous page...

Atom-1	Atom-2	Interatomic distance (Å)	Clash overlap (Å)
1:0:1033:G:H22	1:0:1150:C:H2'	1.62	0.64
1:0:1427:G:H2'	1:0:1428:G:H5'	1.80	0.64
1:0:2236:U:C3'	1:0:2237:C:H5''	2.27	0.64
1:0:1194:U:H2'	1:0:1195:U:C6	2.32	0.64
1:0:2312:A:H4'	1:0:2313:G:N7	2.13	0.64
1:0:2440:C:H1'	1:0:2471:U:H3	1.63	0.64
1:0:727:U:H2'	1:0:728:G:H5''	1.79	0.64
1:0:2236:U:H2'	1:0:2237:C:H5''	1.77	0.64
1:0:2822:U:H2'	1:0:2823:G:O4'	1.97	0.64
1:0:67:G:H22	1:0:72:A:H2'	1.62	0.64
1:0:1341:G:H22	1:0:1664:G:H1	1.46	0.64
1:0:2080:U:H2'	1:0:2081:U:C6	2.32	0.64
1:0:2690:A:OP2	1:0:2694:G:H5'	1.97	0.64
1:0:317:U:H2'	1:0:318:G:H5''	1.79	0.64
1:0:777:A:N6	1:0:1766:U:H3	1.94	0.64
1:0:1807:A:H5'	1:0:1809:G:C1'	2.28	0.64
1:0:1900:U:O2'	1:0:1946:U:H5'	1.98	0.64
1:0:83:A:H4'	1:0:84:G:O4'	1.97	0.64
1:0:1580:C:H2'	1:0:1581:C:C6	2.32	0.64
1:0:831:G:H21	1:0:1203:A:N6	1.93	0.64
1:0:1428:G:H5''	1:0:1429:A:H5'	1.79	0.63
1:0:2035:G:H2'	1:0:2036:G:H8	1.63	0.63
1:0:1198:C:H5''	1:0:1199:U:H5''	1.80	0.63
1:0:1715:A:H1'	1:0:1717:A:O4'	1.98	0.63
1:0:191:G:O2'	1:0:192:G:H5'	1.98	0.63
1:0:26:G:H21	1:0:524:A:H62	1.46	0.63
1:0:998:C:H2'	1:0:999:A:O4'	1.97	0.63
1:0:1250:A:O2'	1:0:1251:G:H4'	1.99	0.63
1:0:2261:G:H5''	1:0:2262:C:O5'	1.98	0.63
1:0:927:C:H2'	1:0:928:G:O4'	1.98	0.63
1:0:128:C:C2'	1:0:129:A:H5''	2.27	0.63
1:0:2617:G:H22	1:0:2755:A:H2'	1.64	0.63
1:0:653:G:N2	1:0:655:A:H1'	2.14	0.63
1:0:952:A:O2'	1:0:1204:G:H4'	1.98	0.63
1:0:67:G:N2	1:0:72:A:H2'	2.13	0.63
1:0:1181:C:C3'	1:0:1182:U:H5''	2.29	0.62
1:0:2268:G:H22	1:0:2323:U:H4'	1.64	0.62
1:0:2544:A:H2'	1:0:2545:A:H4'	1.81	0.62
1:0:614:G:H2'	1:0:615:C:C6	2.33	0.62
1:0:1517:C:H2'	1:0:1518:C:C6	2.34	0.62
1:0:167:A:H62	1:0:183:U:H3	1.47	0.62

Continued on next page...

Continued from previous page...

Atom-1	Atom-2	Interatomic distance (Å)	Clash overlap (Å)
1:0:2418:A:H4'	1:0:2420:C:OP2	1.99	0.62
1:0:2636:A:H62	1:0:2643:G:N2	1.90	0.62
1:0:2508:G:H5''	1:0:2509:A:H5''	1.82	0.62
1:0:2755:A:O2'	1:0:2756:A:H5'	2.00	0.62
1:0:59:G:H1'	1:0:73:A:N1	2.15	0.62
1:0:1085:G:H2'	1:0:1086:C:C6	2.35	0.62
1:0:121:G:O2'	1:0:1389:C:H4'	2.00	0.62
1:0:1354:A:H62	1:0:1407:G:H22	1.47	0.62
1:0:2422:C:H2'	1:0:2423:G:H8	1.64	0.62
1:0:439:C:H2'	1:0:440:U:O4'	1.99	0.62
1:0:2045:A:H4'	1:0:2421:C:OP2	2.00	0.62
1:0:852:U:H3	1:0:950:G:H1	1.47	0.62
1:0:974:U:H1'	1:0:2229:G:N2	2.15	0.62
1:0:2381:A:H4'	1:0:2382:C:C5	2.35	0.62
1:0:362:C:H2'	1:0:363:G:H4'	1.81	0.62
1:0:414:A:H2'	1:0:415:A:O4'	1.99	0.62
1:0:542:A:C2'	1:0:543:G:H5'	2.29	0.62
1:0:814:G:H3'	1:0:815:A:H5'	1.81	0.62
1:0:858:G:H5''	1:0:859:U:H5'	1.80	0.62
1:0:1333:G:N2	1:0:1344:C:H41	1.96	0.62
1:0:1922:U:H1'	1:0:2570:C:O2'	2.00	0.62
1:0:221:A:H62	1:0:231:G:N2	1.92	0.62
1:0:2057:U:O2'	1:0:2576:G:H1'	1.98	0.62
1:0:2769:C:H2'	1:0:2770:A:H5'	1.82	0.62
1:0:1323:G:H2'	1:0:1324:G:H4'	1.82	0.62
1:0:1656:U:C2'	1:0:1657:A:H5''	2.29	0.62
1:0:742:G:H2'	1:0:742:G:N3	2.13	0.62
1:0:824:U:O2'	1:0:1264:C:H1'	2.00	0.62
1:0:942:U:H2'	1:0:943:U:O4'	2.00	0.62
1:0:571:U:H2'	1:0:581:A:H1'	1.82	0.61
1:0:1976:U:H2'	1:0:1977:C:H5'	1.82	0.61
1:0:2721:A:H62	1:0:2743:G:N2	1.99	0.61
1:0:181:A:H4'	1:0:182:G:C5'	2.30	0.61
1:0:2246:A:H2'	1:0:2246:A:N3	2.15	0.61
1:0:860:U:C2'	1:0:861:G:H5'	2.31	0.61
1:0:878:C:H42	1:0:921:A:N6	1.97	0.61
1:0:940:G:C3'	1:0:941:U:H5''	2.14	0.61
1:0:1455:C:O2'	1:0:1644:G:H5''	2.00	0.61
1:0:81:C:H2'	1:0:82:G:O4'	2.01	0.61
1:0:1066:G:H2'	1:0:1067:G:H4'	1.83	0.61
1:0:1188:A:H2'	1:0:1189:G:O4'	2.00	0.61

Continued on next page...

Continued from previous page...

Atom-1	Atom-2	Interatomic distance (Å)	Clash overlap (Å)
1:0:2357:A:H2'	1:0:2358:C:O4'	2.00	0.61
1:0:2770:A:H5'	1:0:2867:G:N2	2.16	0.61
1:0:1380:C:H2'	1:0:1381:G:H5'	1.81	0.61
1:0:2572:U:H2'	1:0:2573:C:C6	2.36	0.61
1:0:1923:U:H4'	1:0:1948:C:N4	2.16	0.61
1:0:1426:U:H2'	1:0:1427:G:O4'	2.00	0.61
1:0:2223:U:H2'	1:0:2224:U:O4'	2.01	0.61
1:0:2242:C:N4	1:0:2257:A:H61	1.99	0.61
1:0:2322:U:O2'	1:0:2323:U:H5'	2.00	0.61
1:0:800:U:H3'	1:0:804:C:H41	1.66	0.61
1:0:871:U:H1'	1:0:2248:A:H5''	1.83	0.61
1:0:1286:U:H5''	1:0:1663:C:H42	1.66	0.60
1:0:1871:G:N3	1:0:1871:G:H2'	2.16	0.60
1:0:2185:U:H2'	1:0:2186:G:C8	2.36	0.60
1:0:1713:G:H2'	1:0:1714:A:O4'	2.01	0.60
1:0:1807:A:H5'	1:0:1809:G:O4'	2.01	0.60
1:0:2604:G:H2'	1:0:2605:C:C6	2.36	0.60
1:0:1140:A:H61	1:0:2470:U:H6	1.49	0.60
1:0:2727:G:O2'	1:0:2728:A:H5''	2.02	0.60
1:0:831:G:N2	1:0:1203:A:H62	1.95	0.60
1:0:2238:G:H2'	1:0:2239:C:C6	2.37	0.60
1:0:1918:G:H4'	1:0:1920:A:N3	2.16	0.60
1:0:70:A:O3'	1:0:71:A:H3'	2.01	0.60
1:0:1811:A:H1'	1:0:1813:A:C5	2.36	0.60
1:0:669:G:H2'	1:0:670:U:C6	2.37	0.60
1:0:1458:A:H3'	1:0:1459:U:C5'	2.32	0.60
1:0:2858:A:H3'	1:0:2859:U:H5'	1.84	0.60
1:0:1774:A:H1'	1:0:2586:G:H21	1.67	0.60
1:0:2426:G:O6	1:0:2479:U:H2'	2.00	0.60
1:0:2012:A:N7	1:0:2014:A:H5'	2.16	0.60
1:0:2377:U:H2'	1:0:2378:G:C8	2.37	0.60
1:0:1634:A:O2'	1:0:1635:G:OP1	2.16	0.60
1:0:2426:G:C5'	1:0:2480:C:H41	2.14	0.60
1:0:73:A:H3'	1:0:73:A:N3	2.17	0.60
1:0:1088:A:H2'	1:0:1089:C:O4'	2.02	0.59
1:0:1625:A:H2'	1:0:1625:A:N3	2.16	0.59
1:0:17:G:H21	1:0:564:U:H5''	1.66	0.59
1:0:2759:U:H5''	1:0:2760:G:O5'	2.03	0.59
1:0:357:A:H2'	1:0:358:C:H5'	1.84	0.59
1:0:455:A:H4'	1:0:1214:C:O2'	2.02	0.59
1:0:2009:U:H3	1:0:2020:G:H1	1.51	0.59

Continued on next page...

Continued from previous page...

Atom-1	Atom-2	Interatomic distance (Å)	Clash overlap (Å)
1:0:2402:U:H5'	1:0:2404:A:C5	2.37	0.59
1:0:2547:C:H2'	1:0:2548:G:H8	1.67	0.59
1:0:55:A:H2'	1:0:56:C:C6	2.37	0.59
1:0:653:G:H4'	1:0:2328:G:H4'	1.83	0.59
1:0:1073:G:C2'	1:0:1074:G:H4'	2.26	0.59
1:0:1289:A:O2'	1:0:1290:A:H5'	2.02	0.59
1:0:1747:G:H1'	1:0:1749:G:N3	2.18	0.59
1:0:2260:C:H4'	1:0:2368:G:H21	1.66	0.59
1:0:2081:U:C2'	1:0:2082:C:H5''	2.32	0.59
1:0:2243:C:H2'	1:0:2244:C:O4'	2.02	0.59
1:0:471:A:N6	1:0:480:G:H21	1.94	0.59
1:0:1298:G:N2	1:0:1341:G:H5''	2.18	0.59
1:0:1474:A:H3'	1:0:1474:A:N3	2.17	0.59
1:0:1141:U:H5'	1:0:2549:G:N2	2.18	0.59
1:0:2491:C:C3'	1:0:2492:G:H5''	2.33	0.59
1:0:2565:C:O2'	1:0:2566:A:H5'	2.01	0.59
1:0:2205:C:H2'	1:0:2206:C:C6	2.38	0.59
1:0:2547:C:H2'	1:0:2548:G:C8	2.38	0.59
1:0:366:U:H2'	1:0:367:G:H8	1.67	0.59
1:0:192:G:O2'	1:0:193:A:OP2	2.19	0.59
1:0:412:U:H2'	1:0:413:G:O4'	2.03	0.59
1:0:459:A:H1'	1:0:466:A:N7	2.16	0.59
1:0:513:A:H4'	1:0:515:A:H5'	1.83	0.59
1:0:1683:G:H2'	1:0:1684:G:O4'	2.03	0.59
1:0:242:A:O2'	1:0:243:G:P	2.61	0.59
1:0:521:U:H4'	1:0:1248:G:O2'	2.02	0.59
1:0:804:C:O2'	1:0:806:A:H4'	2.03	0.59
1:0:1354:A:O2'	1:0:1355:A:OP1	2.18	0.59
1:0:1664:G:O5'	1:0:1665:C:OP1	2.21	0.59
1:0:242:A:O2'	1:0:243:G:O4'	2.21	0.59
1:0:552:C:H2'	1:0:553:C:H4'	1.85	0.59
1:0:2236:U:C2'	1:0:2237:C:H5''	2.33	0.58
1:0:2549:G:H2'	1:0:2550:C:O4'	2.02	0.58
1:0:25:U:H3	1:0:525:A:N6	2.01	0.58
1:0:665:A:H3'	1:0:666:U:C5'	2.33	0.58
1:0:973:U:H2'	1:0:974:U:C6	2.38	0.58
1:0:1180:A:H2'	1:0:1181:C:C6	2.38	0.58
1:0:2368:G:H5''	1:0:2369:U:O4'	2.03	0.58
1:0:368:A:H2'	1:0:369:C:O4'	2.03	0.58
1:0:1251:G:H2'	1:0:1252:C:C6	2.37	0.58
1:0:1528:C:C2'	1:0:1529:C:H5''	2.33	0.58

Continued on next page...

Continued from previous page...

Atom-1	Atom-2	Interatomic distance (Å)	Clash overlap (Å)
1:0:1730:G:H2'	1:0:1731:C:C6	2.38	0.58
1:0:1994:U:H2'	1:0:1995:G:O4'	2.04	0.58
1:0:2677:U:H2'	1:0:2678:C:C6	2.39	0.58
1:0:1474:A:C2'	1:0:1475:U:H5'	2.33	0.58
1:0:1181:C:C2'	1:0:1182:U:H5''	2.33	0.58
1:0:1472:C:H2'	1:0:1473:U:H5'	1.85	0.58
1:0:984:A:H2'	1:0:1200:G:H22	1.68	0.58
1:0:1567:A:H2'	1:0:1568:A:O4'	2.04	0.58
1:0:2607:C:H3'	1:0:2608:A:C5'	2.31	0.58
1:0:1354:A:H62	1:0:1407:G:N2	2.02	0.58
1:0:689:A:H2'	1:0:690:A:H5'	1.85	0.58
1:0:1916:G:H2'	1:0:1917:C:C6	2.39	0.58
1:0:2548:G:H2'	1:0:2549:G:C5'	2.33	0.58
1:0:404:A:H5'	1:0:425:A:H4'	1.85	0.58
1:0:766:A:H2'	1:0:767:G:C8	2.38	0.58
1:0:839:U:H2'	1:0:841:G:O4'	2.03	0.58
1:0:2274:C:H2'	1:0:2275:U:H5'	1.86	0.58
1:0:2422:C:H2'	1:0:2423:G:C8	2.39	0.58
1:0:490:A:O2'	1:0:491:A:H5'	2.03	0.58
1:0:874:A:H62	1:0:928:G:H21	1.51	0.58
1:0:118:U:H1'	1:0:143:A:C8	2.39	0.58
1:0:1779:C:H2'	1:0:1780:A:O4'	2.04	0.58
1:0:319:G:H21	1:0:340:G:N2	2.02	0.58
1:0:1301:U:H3	1:0:1339:U:H3	1.51	0.57
1:0:1712:G:H2'	1:0:1713:G:O4'	2.02	0.57
1:0:2691:C:H3'	1:0:2692:A:C5'	2.33	0.57
1:0:1615:C:H2'	1:0:1616:C:C6	2.39	0.57
1:0:2222:U:H2'	1:0:2223:U:C6	2.38	0.57
1:0:605:G:H4'	1:0:949:G:O2'	2.04	0.57
1:0:1514:C:H2'	1:0:1515:U:O4'	2.04	0.57
1:0:2784:A:H3'	1:0:2785:A:H8	1.70	0.57
1:0:925:U:H4'	1:0:926:C:C5	2.40	0.57
1:0:1223:G:O2'	1:0:1224:A:OP2	2.21	0.57
1:0:217:U:H5'	1:0:633:G:O2'	2.05	0.57
1:0:2242:C:H42	1:0:2257:A:N6	2.03	0.57
1:0:2426:G:H22	1:0:2430:A:H62	1.51	0.57
1:0:486:U:H4'	1:0:520:C:H5'	1.86	0.57
1:0:929:A:H2'	1:0:930:A:H4'	1.86	0.57
1:0:2794:G:H2'	1:0:2796:A:N7	2.20	0.57
1:0:1137:A:H5''	1:0:1138:A:H5''	1.86	0.57
1:0:1392:U:H2'	1:0:1393:G:H5'	1.87	0.57

Continued on next page...

Continued from previous page...

Atom-1	Atom-2	Interatomic distance (Å)	Clash overlap (Å)
1:0:2236:U:H3'	1:0:2237:C:H5''	1.85	0.57
1:0:2426:G:O2'	1:0:2427:A:OP2	2.19	0.57
1:0:931:G:N2	1:0:2247:A:H5''	2.19	0.57
1:0:1472:C:C2'	1:0:1473:U:H5'	2.34	0.57
1:0:2459:C:H2'	1:0:2460:G:H5'	1.87	0.57
1:0:628:A:H2'	1:0:629:C:C6	2.40	0.57
1:0:1971:C:H2'	1:0:1972:G:H8	1.70	0.57
1:0:839:U:H5''	1:0:2408:G:OP2	2.05	0.57
1:0:541:C:N4	1:0:572:G:O4'	2.38	0.57
1:0:873:U:P	1:0:928:G:H1	2.28	0.57
1:0:1464:A:H4'	1:0:1545:G:H4'	1.86	0.57
1:0:73:A:H4'	1:0:74:G:C1'	2.35	0.57
1:0:369:C:H2'	1:0:370:U:O4'	2.04	0.56
1:0:632:A:H2'	1:0:633:G:H5'	1.86	0.56
1:0:687:G:O2'	1:0:688:A:H5'	2.04	0.56
1:0:1087:C:H2'	1:0:1088:A:O4'	2.05	0.56
1:0:1220:G:H2'	1:0:1221:C:C6	2.40	0.56
1:0:1431:U:H2'	1:0:1432:G:O4'	2.06	0.56
1:0:629:C:H2'	1:0:630:G:H5'	1.87	0.56
1:0:73:A:H4'	1:0:74:G:H1'	1.85	0.56
1:0:804:C:O2	1:0:807:A:H5'	2.05	0.56
1:0:2437:G:N2	1:0:2469:G:H2'	2.20	0.56
1:0:1337:G:H1'	1:0:1632:A:N6	2.20	0.56
1:0:1981:A:H4'	1:0:2704:U:O2'	2.06	0.56
1:0:2018:G:H3'	1:0:2019:C:C5'	2.36	0.56
1:0:2494:C:H2'	1:0:2495:G:C8	2.40	0.56
1:0:2668:U:C4'	1:0:2669:C:H5'	2.29	0.56
1:0:758:G:O2'	1:0:761:G:H1'	2.05	0.56
1:0:930:A:H4'	1:0:930:A:OP1	2.03	0.56
1:0:2329:C:H2'	1:0:2330:G:H5'	1.88	0.56
1:0:2560:G:H4'	1:0:2561:G:N7	2.20	0.56
1:0:784:U:H2'	1:0:785:U:C6	2.41	0.56
1:0:1280:U:O2'	1:0:1281:A:H5'	2.06	0.56
1:0:1947:G:OP1	1:0:1947:G:H3'	2.05	0.56
1:0:843:G:O2'	1:0:844:G:OP1	2.15	0.56
1:0:103:U:H2'	1:0:104:C:C6	2.40	0.56
1:0:2636:A:N6	1:0:2643:G:H21	1.94	0.56
1:0:874:A:N6	1:0:928:G:H21	2.03	0.56
1:0:1191:G:H2'	1:0:1192:A:C8	2.40	0.56
1:0:176:A:H5''	1:0:177:U:H5	1.71	0.56
1:0:114:C:O2'	1:0:124:A:H1'	2.06	0.56

Continued on next page...

Continued from previous page...

Atom-1	Atom-2	Interatomic distance (Å)	Clash overlap (Å)
1:0:158:A:H2'	1:0:159:A:O4'	2.05	0.56
1:0:2008:C:H2'	1:0:2009:U:C6	2.41	0.56
1:0:2470:U:O2'	1:0:2471:U:H5'	2.06	0.56
1:0:2641:A:H2'	1:0:2642:G:O4'	2.06	0.56
1:0:69:G:O2'	1:0:70:A:H8	1.89	0.56
1:0:876:A:H2'	1:0:877:G:C8	2.41	0.56
1:0:1711:C:H4'	1:0:1712:G:C2	2.41	0.56
1:0:2270:U:H2'	1:0:2271:C:C6	2.41	0.56
1:0:2437:G:H2'	1:0:2469:G:C2	2.41	0.56
1:0:2437:G:H2'	1:0:2469:G:N2	2.21	0.56
1:0:2783:U:OP1	1:0:2783:U:O4'	2.24	0.56
1:0:2841:U:O2	1:0:2843:A:H1'	2.05	0.56
1:0:630:G:H2'	1:0:631:G:H5'	1.88	0.56
1:0:77:C:H2'	1:0:78:C:C6	2.41	0.56
1:0:59:G:N2	1:0:87:G:N7	2.53	0.56
1:0:1813:A:H2'	1:0:1814:G:C8	2.41	0.56
1:0:1356:G:H1'	1:0:1613:G:C2	2.40	0.55
1:0:775:U:O2	1:0:1445:A:H5''	2.06	0.55
1:0:2162:C:H2'	1:0:2163:U:C6	2.41	0.55
1:0:197:G:N2	1:0:440:U:H2'	2.22	0.55
1:0:533:C:H2'	1:0:534:U:O4'	2.06	0.55
1:0:583:C:H41	1:0:2017:U:H5	1.53	0.55
1:0:879:A:H2'	1:0:879:A:N3	2.21	0.55
1:0:2061:C:H1'	1:0:2413:A:H1'	1.89	0.55
1:0:2095:G:C2'	1:0:2096:U:H5''	2.36	0.55
1:0:366:U:H2'	1:0:367:G:C8	2.42	0.55
1:0:1258:G:H2'	1:0:1259:A:C8	2.42	0.55
1:0:1263:G:O2'	1:0:1264:C:OP1	2.24	0.55
1:0:197:G:H22	1:0:440:U:H2'	1.71	0.55
1:0:1181:C:H3'	1:0:1182:U:H5''	1.89	0.55
1:0:1669:A:H2'	1:0:1670:G:H4'	1.88	0.55
1:0:2321:C:H2'	1:0:2322:U:O4'	2.06	0.55
1:0:241:C:O2'	1:0:242:A:H5''	2.06	0.55
1:0:2483:U:H2'	1:0:2484:G:H5'	1.88	0.55
1:0:2758:A:H5''	1:0:2759:U:H5	1.71	0.55
1:0:558:G:H5''	1:0:559:C:C5	2.41	0.55
1:0:173:A:N3	1:0:173:A:H2'	2.22	0.55
1:0:1791:C:H1'	1:0:1793:A:O4'	2.05	0.55
1:0:2381:A:H4'	1:0:2382:C:H5	1.70	0.55
1:0:618:A:H2'	1:0:619:A:O4'	2.07	0.55
1:0:1200:G:O4'	1:0:1200:G:OP1	2.25	0.55

Continued on next page...

Continued from previous page...

Atom-1	Atom-2	Interatomic distance (Å)	Clash overlap (Å)
1:0:1429:A:H62	1:0:1601:U:H5''	1.71	0.55
1:0:1789:U:C2'	1:0:1790:G:H5'	2.37	0.55
1:0:2204:A:O2'	1:0:2205:C:P	2.65	0.55
1:0:515:A:C2'	1:0:516:G:H5'	2.37	0.55
1:0:2532:G:H1'	1:0:2561:G:N3	2.22	0.55
1:0:604:U:H2'	1:0:605:G:C8	2.41	0.55
1:0:1278:A:O2'	1:0:1279:G:P	2.65	0.55
1:0:226:C:H4'	1:0:227:G:C8	2.42	0.55
1:0:2379:G:H2'	1:0:2380:U:O4'	2.06	0.55
1:0:791:G:H2'	1:0:792:U:C6	2.41	0.55
1:0:841:G:H3'	1:0:841:G:N3	2.21	0.55
1:0:166:G:H21	1:0:184:A:N6	1.93	0.55
1:0:951:G:C2'	1:0:952:A:H5''	2.36	0.55
1:0:1288:A:O2'	1:0:1289:A:H5'	2.07	0.54
1:0:177:U:H2'	1:0:178:C:C6	2.42	0.54
1:0:1829:C:H2'	1:0:1830:C:H5'	1.89	0.54
1:0:2854:G:H3'	1:0:2854:G:N3	2.22	0.54
1:0:782:U:H2'	1:0:783:G:C8	2.42	0.54
1:0:80:A:H2'	1:0:81:C:O4'	2.06	0.54
1:0:847:C:N4	1:0:955:G:H21	1.95	0.54
1:0:394:U:H2'	1:0:395:G:H8	1.71	0.54
1:0:798:G:O2'	1:0:1770:U:H4'	2.07	0.54
1:0:1955:G:C2'	1:0:1956:G:H5'	2.37	0.54
1:0:2168:A:H2'	1:0:2169:A:H5'	1.89	0.54
1:0:1982:C:H1'	1:0:2666:U:O2'	2.07	0.54
1:0:468:A:H2'	1:0:469:G:H4'	1.90	0.54
1:0:1313:U:O2'	1:0:1314:A:P	2.66	0.54
1:0:1459:U:H2'	1:0:1475:U:O2'	2.07	0.54
1:0:1818:G:H2'	1:0:1819:U:C6	2.42	0.54
1:0:2466:G:H2'	1:0:2467:A:C8	2.42	0.54
1:0:1746:A:C2'	1:0:1747:G:H5'	2.36	0.54
1:0:162:C:H4'	1:0:195:A:O2'	2.08	0.54
1:0:1279:G:C2'	1:0:1280:U:OP2	2.56	0.54
1:0:1356:G:H5'	1:0:1614:C:OP2	2.08	0.54
1:0:2319:G:H2'	1:0:2320:G:C8	2.43	0.54
1:0:393:U:H2'	1:0:394:U:C6	2.43	0.54
1:0:1210:C:H2'	1:0:1211:G:O4'	2.08	0.54
1:0:1289:A:H62	1:0:1662:G:H1	1.56	0.54
1:0:2249:U:H2'	1:0:2250:G:O4'	2.08	0.54
1:0:942:U:O2'	1:0:943:U:H5'	2.07	0.54
1:0:216:U:H2'	1:0:217:U:O4'	2.08	0.54

Continued on next page...

Continued from previous page...

Atom-1	Atom-2	Interatomic distance (Å)	Clash overlap (Å)
1:0:2516:U:H2'	1:0:2517:C:C6	2.42	0.54
1:0:48:A:H4'	1:0:50:G:O4'	2.08	0.54
1:0:1463:A:H2'	1:0:1464:A:C8	2.42	0.54
1:0:2492:G:H2'	1:0:2493:U:O4'	2.07	0.54
1:0:564:U:H2'	1:0:565:A:C8	2.42	0.54
1:0:2372:A:H2'	1:0:2373:C:C6	2.43	0.54
1:0:242:A:O2'	1:0:243:G:O5'	2.26	0.54
1:0:484:G:O2'	1:0:485:G:H5'	2.07	0.54
1:0:775:U:H4'	1:0:776:G:C8	2.43	0.54
1:0:826:U:H2'	1:0:827:C:C6	2.43	0.54
1:0:1273:G:H2'	1:0:1274:C:C6	2.44	0.53
1:0:126:C:H2'	1:0:127:C:C6	2.42	0.53
1:0:1333:G:N2	1:0:1344:C:N4	2.55	0.53
1:0:2440:C:H1'	1:0:2471:U:N3	2.23	0.53
1:0:598:U:H2'	1:0:599:A:C8	2.42	0.53
1:0:728:G:H2'	1:0:729:A:O4'	2.08	0.53
1:0:173:A:O2'	1:0:174:A:OP1	2.19	0.53
1:0:1976:U:C2'	1:0:1977:C:H5'	2.37	0.53
1:0:939:C:H2'	1:0:940:G:C8	2.43	0.53
1:0:1528:C:C3'	1:0:1529:C:H5''	2.38	0.53
1:0:1974:U:H2'	1:0:1975:G:H5''	1.89	0.53
1:0:646:C:H2'	1:0:647:G:O4'	2.08	0.53
1:0:67:G:H8	1:0:67:G:O5'	1.90	0.53
1:0:788:G:H5'	1:0:790:A:H1'	1.89	0.53
1:0:917:U:H2'	1:0:918:A:O4'	2.07	0.53
1:0:1664:G:H4'	1:0:1665:C:O5'	2.07	0.53
1:0:1838:G:C2'	1:0:1839:A:H5'	2.38	0.53
1:0:1921:A:H2'	1:0:1922:U:H5''	1.90	0.53
1:0:2321:C:O2'	1:0:2353:G:H5''	2.09	0.53
1:0:2498:U:H5''	1:0:2499:C:OP1	2.09	0.53
1:0:2571:G:H2'	1:0:2572:U:C6	2.42	0.53
1:0:317:U:C3'	1:0:318:G:H5''	2.39	0.53
1:0:33:C:N4	1:0:466:A:H61	2.06	0.53
1:0:832:A:H2'	1:0:833:A:O4'	2.07	0.53
1:0:857:U:H2'	1:0:858:G:H5'	1.90	0.53
1:0:918:A:C2'	1:0:919:U:H5''	2.36	0.53
1:0:929:A:H3'	1:0:930:A:C5'	2.33	0.53
1:0:1326:U:H2'	1:0:1327:C:H5'	1.90	0.53
1:0:1358:C:H2'	1:0:1359:G:C5'	2.38	0.53
1:0:1971:C:H2'	1:0:1972:G:C8	2.43	0.53
1:0:2312:A:H1'	1:0:2314:A:C8	2.44	0.53

Continued on next page...

Continued from previous page...

Atom-1	Atom-2	Interatomic distance (Å)	Clash overlap (Å)
1:0:225:G:N2	1:0:2410:U:H1'	2.23	0.53
1:0:404:A:H2'	1:0:405:C:C6	2.43	0.53
1:0:878:C:N4	1:0:921:A:H62	2.05	0.53
1:0:1414:G:H2'	1:0:1415:C:C6	2.44	0.53
1:0:1745:C:H2'	1:0:1746:A:O4'	2.09	0.53
1:0:1825:C:C2'	1:0:1826:U:H5'	2.38	0.53
1:0:688:A:O2'	1:0:2422:C:H4'	2.08	0.53
1:0:2756:A:H1'	1:0:2758:A:N7	2.23	0.53
1:0:737:C:H2'	1:0:738:G:O4'	2.09	0.53
1:0:807:A:H2'	1:0:808:C:C6	2.43	0.53
1:0:960:U:H2'	1:0:961:G:C8	2.43	0.53
1:0:1029:C:H2'	1:0:1030:U:H5''	1.91	0.53
1:0:1190:C:H2'	1:0:1191:G:C8	2.44	0.53
1:0:1301:U:H2'	1:0:1664:G:H21	1.73	0.53
1:0:1763:G:H2'	1:0:1764:A:H4'	1.90	0.53
1:0:1938:U:C2'	1:0:1939:U:H5'	2.38	0.53
1:0:212:U:H2'	1:0:213:C:C6	2.44	0.53
1:0:830:C:O2'	1:0:852:U:H5''	2.09	0.53
1:0:341:A:H1'	1:0:1223:G:O6	2.08	0.53
1:0:1497:C:O2'	1:0:1498:G:H5'	2.08	0.53
1:0:1789:U:O2'	1:0:1790:G:H5'	2.08	0.53
1:0:2780:A:O2'	1:0:2781:G:H5'	2.09	0.53
1:0:597:U:H3	1:0:683:A:H2'	1.74	0.53
1:0:1075:C:H2'	1:0:1076:U:O4'	2.09	0.53
1:0:1502:G:O2'	1:0:1503:G:H5'	2.09	0.53
1:0:1654:A:H2'	1:0:1655:C:C6	2.43	0.53
1:0:201:G:H2'	1:0:202:A:C8	2.44	0.53
1:0:2757:G:OP2	1:0:2761:A:H4'	2.09	0.53
1:0:521:U:H2'	1:0:522:G:H5'	1.91	0.53
1:0:665:A:OP2	1:0:666:U:H5'	2.09	0.53
1:0:874:A:H62	1:0:928:G:N2	2.07	0.53
1:0:1313:U:O4	1:0:1651:U:H5'	2.09	0.52
1:0:2536:G:H2'	1:0:2537:C:C6	2.44	0.52
1:0:2809:A:C2'	1:0:2810:A:H5'	2.39	0.52
1:0:599:A:H2'	1:0:600:G:C8	2.44	0.52
1:0:1217:U:H2'	1:0:1218:C:C6	2.44	0.52
1:0:1900:U:H4'	1:0:1946:U:O4'	2.09	0.52
1:0:38:G:H2'	1:0:39:C:C6	2.44	0.52
1:0:597:U:H2'	1:0:598:U:C6	2.43	0.52
1:0:638:A:O2'	1:0:639:G:H5'	2.09	0.52
1:0:843:G:O2'	1:0:844:G:H5'	2.10	0.52

Continued on next page...

Continued from previous page...

Atom-1	Atom-2	Interatomic distance (Å)	Clash overlap (Å)
1:0:1004:A:H2'	1:0:1005:U:H5''	1.90	0.52
1:0:1566:G:H4'	1:0:1733:U:O4	2.10	0.52
1:0:181:A:H4'	1:0:182:G:C4'	2.39	0.52
1:0:1964:A:H5''	1:0:1965:U:OP2	2.09	0.52
1:0:394:U:H2'	1:0:395:G:C8	2.44	0.52
1:0:538:A:C2'	1:0:539:A:H5''	2.38	0.52
1:0:460:U:N3	1:0:592:G:H1'	2.20	0.52
1:0:215:G:O2'	1:0:617:U:H1'	2.08	0.52
1:0:658:G:H4'	1:0:2331:A:H5'	1.91	0.52
1:0:757:U:O2'	1:0:758:G:H5'	2.09	0.52
1:0:870:C:H2'	1:0:871:U:C6	2.43	0.52
1:0:578:U:C1'	1:0:957:G:H21	2.21	0.52
1:0:95:G:H2'	1:0:96:C:C6	2.44	0.52
1:0:127:C:H2'	1:0:128:C:C6	2.45	0.52
1:0:167:A:H2'	1:0:168:A:C8	2.44	0.52
1:0:1970:G:H2'	1:0:1971:C:C6	2.44	0.52
1:0:2401:A:H2'	1:0:2403:C:C5	2.44	0.52
1:0:2426:G:N2	1:0:2430:A:H62	2.07	0.52
1:0:2728:A:H2'	1:0:2729:A:O4'	2.09	0.52
1:0:1234:C:H2'	1:0:1235:C:C6	2.45	0.52
1:0:616:U:C2'	1:0:617:U:H5''	2.36	0.52
1:0:776:G:N3	1:0:776:G:H2'	2.25	0.52
1:0:1312:G:C5'	1:0:1313:U:H5'	2.34	0.52
1:0:1286:U:H5''	1:0:1663:C:N4	2.24	0.52
1:0:2272:A:H2'	1:0:2273:C:C6	2.45	0.52
1:0:2756:A:H4'	1:0:2758:A:OP1	2.09	0.52
1:0:2700:U:N3	1:0:2848:A:N6	2.55	0.52
1:0:689:A:N3	1:0:689:A:H3'	2.24	0.52
1:0:129:A:H2'	1:0:130:C:C6	2.44	0.52
1:0:1365:U:H1'	1:0:1586:A:H2	1.75	0.52
1:0:45:C:H5''	1:0:192:G:C8	2.44	0.52
1:0:541:C:H2'	1:0:2002:A:C2	2.44	0.52
1:0:230:C:H2'	1:0:231:G:O4'	2.10	0.52
1:0:333:A:H1'	1:0:351:A:C4	2.44	0.52
1:0:446:C:H2'	1:0:447:U:C6	2.45	0.52
1:0:476:G:H2'	1:0:477:A:C8	2.44	0.52
1:0:795:A:H4'	1:0:796:A:C8	2.44	0.52
1:0:9:U:H3	1:0:2608:A:N6	2.02	0.52
1:0:2083:G:H2'	1:0:2084:G:O4'	2.10	0.52
1:0:332:C:H2'	1:0:333:A:H5'	1.92	0.52
1:0:1259:A:H2'	1:0:1260:A:C8	2.45	0.52

Continued on next page...

Continued from previous page...

Atom-1	Atom-2	Interatomic distance (Å)	Clash overlap (Å)
1:0:1288:A:H2'	1:0:1289:A:O4'	2.09	0.52
1:0:1597:A:H2'	1:0:1598:C:C6	2.45	0.52
1:0:1923:U:H1'	1:0:1947:G:H4'	1.92	0.52
1:0:2504:G:H2'	1:0:2505:G:C8	2.45	0.52
1:0:2559:U:H2'	1:0:2560:G:H5'	1.91	0.52
1:0:457:C:H2'	1:0:458:G:O4'	2.10	0.52
1:0:70:A:P	1:0:111:G:H4'	2.50	0.52
1:0:71:A:H5''	1:0:72:A:OP2	2.10	0.52
1:0:1198:C:C5'	1:0:1199:U:H5''	2.40	0.52
1:0:1788:C:H2'	1:0:1789:U:C6	2.45	0.52
1:0:1949:A:H1'	1:0:2572:U:C4'	2.40	0.52
1:0:2451:G:H2'	1:0:2508:G:N2	2.25	0.52
1:0:688:A:H1'	1:0:2423:G:H5'	1.92	0.52
1:0:1092:U:H2'	1:0:1093:U:C6	2.44	0.51
1:0:1576:G:H2'	1:0:1577:G:O4'	2.10	0.51
1:0:1775:A:H4'	1:0:1776:A:C8	2.45	0.51
1:0:58:C:O2	1:0:72:A:H3'	2.10	0.51
1:0:158:A:H2'	1:0:159:A:C8	2.45	0.51
1:0:168:A:H2'	1:0:169:C:C6	2.45	0.51
1:0:2177:U:H2'	1:0:2178:U:C6	2.45	0.51
1:0:2213:G:H2'	1:0:2214:G:C8	2.46	0.51
1:0:2552:C:H5''	1:0:2553:G:H5''	1.92	0.51
1:0:2623:A:H2'	1:0:2624:G:O4'	2.10	0.51
1:0:317:U:C2'	1:0:318:G:H5''	2.39	0.51
1:0:35:G:C1'	1:0:466:A:H1'	2.39	0.51
1:0:838:A:H2'	1:0:839:U:C6	2.45	0.51
1:0:1018:C:H2'	1:0:1019:U:C5	2.44	0.51
1:0:2242:C:N4	1:0:2257:A:N6	2.57	0.51
1:0:2320:G:H2'	1:0:2321:C:O4'	2.09	0.51
1:0:688:A:HO2'	1:0:2422:C:H4'	1.75	0.51
1:0:1352:G:H2'	1:0:1353:A:C8	2.43	0.51
1:0:1661:C:O2'	1:0:1662:G:H5'	2.10	0.51
1:0:2532:G:H1'	1:0:2561:G:N2	2.25	0.51
1:0:2703:C:H2'	1:0:2704:U:C6	2.45	0.51
1:0:491:A:H2'	1:0:491:A:N3	2.26	0.51
1:0:109:A:C2'	1:0:110:U:H5''	2.41	0.51
1:0:1358:C:H2'	1:0:1359:G:H5''	1.92	0.51
1:0:1727:C:H4'	1:0:2833:C:O2	2.10	0.51
1:0:2160:C:H2'	1:0:2161:C:C6	2.46	0.51
1:0:2426:G:O2'	1:0:2427:A:P	2.68	0.51
1:0:2483:U:H1'	1:0:2551:A:N1	2.26	0.51

Continued on next page...

Continued from previous page...

Atom-1	Atom-2	Interatomic distance (Å)	Clash overlap (Å)
1:0:451:A:H2'	1:0:452:G:C8	2.45	0.51
1:0:980:G:H2'	1:0:981:C:C6	2.46	0.51
1:0:1683:G:C2'	1:0:1684:G:H5'	2.41	0.51
1:0:1860:A:H2'	1:0:1861:G:O4'	2.11	0.51
1:0:1865:C:H2'	1:0:1866:G:O4'	2.10	0.51
1:0:2532:G:H1'	1:0:2561:G:H21	1.76	0.51
1:0:512:A:H2'	1:0:513:A:H5'	1.93	0.51
1:0:868:U:H2'	1:0:869:C:C6	2.45	0.51
1:0:959:C:H5''	1:0:972:C:O2'	2.11	0.51
1:0:1611:U:H2'	1:0:1612:U:O4'	2.11	0.51
1:0:2059:U:H2'	1:0:2060:A:H5''	1.91	0.51
1:0:223:C:H4'	1:0:398:C:H1'	1.92	0.51
1:0:459:A:H62	1:0:484:G:H1'	1.76	0.51
1:0:590:C:H2'	1:0:591:G:C8	2.45	0.51
1:0:941:U:H4'	1:0:941:U:OP1	2.10	0.51
1:0:1068:A:H2'	1:0:1069:G:C8	2.45	0.51
1:0:69:G:H3'	1:0:111:G:O2'	2.11	0.51
1:0:1677:C:H2'	1:0:1678:G:C8	2.46	0.51
1:0:422:C:H2'	1:0:423:G:H8	1.76	0.51
1:0:1127:C:H2'	1:0:1128:G:H8	1.76	0.51
1:0:1218:C:H2'	1:0:1219:C:C6	2.45	0.51
1:0:170:U:H2'	1:0:171:G:H8	1.76	0.51
1:0:1819:U:H5''	1:0:1954:A:O3'	2.11	0.51
1:0:579:G:H2'	1:0:2013:A:N6	2.26	0.51
1:0:243:G:H2'	1:0:244:C:O4'	2.11	0.51
1:0:1057:A:H3'	1:0:1058:G:C5'	2.41	0.51
1:0:1377:G:H4'	1:0:1800:A:H5'	1.93	0.51
1:0:742:G:H2'	1:0:1766:U:H1'	1.93	0.51
1:0:2660:C:O2'	1:0:2661:G:H5'	2.11	0.51
1:0:18:U:H2'	1:0:19:C:C6	2.46	0.50
1:0:2023:C:H2'	1:0:2024:U:C6	2.46	0.50
1:0:2429:A:H5''	1:0:2476:A:C6	2.46	0.50
1:0:2727:G:C2'	1:0:2728:A:H5''	2.41	0.50
1:0:2872:U:H2'	1:0:2873:G:C8	2.47	0.50
1:0:587:A:H2'	1:0:588:G:H5''	1.93	0.50
1:0:619:A:H2'	1:0:620:G:C8	2.46	0.50
1:0:1052:C:H2'	1:0:1053:G:C8	2.45	0.50
1:0:114:C:H2'	1:0:115:G:O4'	2.11	0.50
1:0:2079:A:H2'	1:0:2080:U:C6	2.46	0.50
1:0:1038:U:O2	1:0:2466:G:H4'	2.10	0.50
1:0:116:A:N3	1:0:155:G:H1'	2.26	0.50

Continued on next page...

Continued from previous page...

Atom-1	Atom-2	Interatomic distance (Å)	Clash overlap (Å)
1:0:1354:A:H3'	1:0:1410:U:O2	2.11	0.50
1:0:1626:A:OP2	1:0:1627:C:H5	1.95	0.50
1:0:1861:G:O2'	1:0:1862:C:H5'	2.11	0.50
1:0:216:U:H5''	1:0:601:A:N6	2.27	0.50
1:0:2178:U:H2'	1:0:2179:C:C6	2.47	0.50
1:0:2238:G:H2'	1:0:2239:C:H6	1.76	0.50
1:0:2725:C:H2'	1:0:2726:U:C6	2.47	0.50
1:0:2726:U:H2'	1:0:2727:G:O4'	2.11	0.50
1:0:1194:U:O2'	1:0:1195:U:P	2.70	0.50
1:0:1272:G:H2'	1:0:1273:G:C8	2.47	0.50
1:0:1424:U:H2'	1:0:1425:G:C8	2.46	0.50
1:0:1857:G:H2'	1:0:1859:A:OP2	2.12	0.50
1:0:1881:U:H2'	1:0:1882:G:H5'	1.94	0.50
1:0:2397:A:H2'	1:0:2398:U:O4'	2.11	0.50
1:0:2446:C:H2'	1:0:2447:G:C8	2.47	0.50
1:0:2057:U:H1'	1:0:2577:A:H1'	1.93	0.50
1:0:25:U:H3	1:0:525:A:H61	1.56	0.50
1:0:583:C:O2'	1:0:584:A:OP2	2.29	0.50
1:0:599:A:H2'	1:0:600:G:H8	1.76	0.50
1:0:841:G:N1	1:0:2226:A:H4'	2.26	0.50
1:0:1747:G:C4'	1:0:1749:G:H1'	2.31	0.50
1:0:2244:C:N4	1:0:2245:A:N6	2.58	0.50
1:0:879:A:O2'	1:0:880:C:H5'	2.11	0.50
1:0:964:A:H2'	1:0:965:G:C8	2.47	0.50
1:0:1279:G:H1'	1:0:1280:U:H5	1.76	0.50
1:0:1979:C:H42	1:0:2706:U:H6	1.60	0.50
1:0:2010:G:H2'	1:0:2011:U:O4'	2.12	0.50
1:0:210:A:N6	1:0:242:A:N7	2.59	0.50
1:0:2329:C:C2'	1:0:2330:G:H5'	2.42	0.50
1:0:2560:G:N3	1:0:2560:G:H3'	2.27	0.50
1:0:2821:G:H2'	1:0:2822:U:C6	2.46	0.50
1:0:316:C:H2'	1:0:317:U:C6	2.47	0.50
1:0:64:C:H2'	1:0:65:C:C6	2.46	0.50
1:0:872:G:H2'	1:0:928:G:N1	2.27	0.50
1:0:1067:G:H2'	1:0:1114:A:H61	1.77	0.50
1:0:1164:C:H2'	1:0:1165:G:O4'	2.11	0.50
1:0:2181:A:H2'	1:0:2182:A:H5'	1.92	0.50
1:0:2428:U:O2'	1:0:2429:A:H5'	2.11	0.50
1:0:2435:C:H2'	1:0:2436:U:C6	2.47	0.50
1:0:215:G:H4'	1:0:617:U:O2'	2.12	0.50
1:0:788:G:H5'	1:0:790:A:N3	2.26	0.50

Continued on next page...

Continued from previous page...

Atom-1	Atom-2	Interatomic distance (Å)	Clash overlap (Å)
1:0:991:A:H61	1:0:2020:G:H21	1.59	0.50
1:0:594:G:H21	1:0:1267:A:H62	1.60	0.50
1:0:2082:C:H2'	1:0:2083:G:O4'	2.11	0.50
1:0:338:G:O2'	1:0:339:U:H5'	2.12	0.50
1:0:645:G:H2'	1:0:646:C:C6	2.47	0.50
1:0:831:G:C2'	1:0:832:A:H5''	2.41	0.50
1:0:1029:C:OP1	1:0:1047:G:H4'	2.11	0.50
1:0:1055:A:N6	1:0:1122:A:H4'	2.27	0.50
1:0:1073:G:H2'	1:0:1074:G:C4'	2.29	0.50
1:0:1312:G:H2'	1:0:1643:A:N6	2.26	0.50
1:0:1685:A:H1'	1:0:1686:A:N7	2.27	0.50
1:0:1920:A:N6	1:0:1923:U:H6	2.10	0.50
1:0:2299:A:H2'	1:0:2299:A:N3	2.26	0.50
1:0:2561:G:O2'	1:0:2562:G:H5'	2.12	0.50
1:0:703:A:H2'	1:0:704:G:H8	1.77	0.50
1:0:991:A:N6	1:0:2020:G:H21	2.10	0.50
1:0:1667:A:H2'	1:0:1668:G:H8	1.77	0.49
1:0:1820:G:O2'	1:0:1821:A:P	2.70	0.49
1:0:864:C:H2'	1:0:865:A:C8	2.46	0.49
1:0:1029:C:C3'	1:0:1030:U:H5''	2.43	0.49
1:0:109:A:H3'	1:0:110:U:C5'	2.39	0.49
1:0:1785:A:H2'	1:0:1786:C:C6	2.46	0.49
1:0:2229:G:H2'	1:0:2475:C:OP1	2.12	0.49
1:0:792:U:H2'	1:0:793:G:O4'	2.12	0.49
1:0:860:U:H2'	1:0:861:G:H5'	1.94	0.49
1:0:1492:A:H2	1:0:1531:C:H41	1.58	0.49
1:0:2580:C:N4	1:0:2582:G:O6	2.45	0.49
1:0:2754:C:H2'	1:0:2755:A:O4'	2.12	0.49
1:0:2805:G:O2'	1:0:2806:G:H5'	2.12	0.49
1:0:431:G:H2'	1:0:432:C:C6	2.47	0.49
1:0:45:C:H2'	1:0:46:C:C6	2.46	0.49
1:0:26:G:H21	1:0:524:A:N6	2.10	0.49
1:0:1055:A:O2'	1:0:1058:G:H1'	2.13	0.49
1:0:1162:A:H2'	1:0:1163:C:C6	2.47	0.49
1:0:1895:A:H2'	1:0:1896:A:O4'	2.13	0.49
1:0:203:G:O2'	1:0:204:A:H5'	2.12	0.49
1:0:2161:C:O2'	1:0:2162:C:P	2.71	0.49
1:0:2313:G:H2'	1:0:2314:A:H5'	1.94	0.49
1:0:2559:U:C2'	1:0:2560:G:H5'	2.41	0.49
1:0:689:A:N6	1:0:815:A:H61	2.06	0.49
1:0:1310:C:OP1	1:0:2689:C:H4'	2.12	0.49

Continued on next page...

Continued from previous page...

Atom-1	Atom-2	Interatomic distance (Å)	Clash overlap (Å)
1:0:165:G:H2'	1:0:166:G:O4'	2.12	0.49
1:0:1912:G:H2'	1:0:1912:G:N3	2.26	0.49
1:0:2404:A:H5''	1:0:2405:A:H3'	1.94	0.49
1:0:2771:C:H2'	1:0:2772:U:C6	2.47	0.49
1:0:2783:U:H2'	1:0:2784:A:O4'	2.12	0.49
1:0:597:U:N3	1:0:683:A:H2'	2.27	0.49
1:0:689:A:C2'	1:0:690:A:H5'	2.43	0.49
1:0:810:U:H2'	1:0:811:G:C8	2.48	0.49
1:0:1031:C:H1'	1:0:1151:U:O2	2.13	0.49
1:0:1195:U:H2'	1:0:1196:G:H8	1.73	0.49
1:0:1445:A:H2'	1:0:1446:U:O4'	2.13	0.49
1:0:777:A:H62	1:0:1766:U:H3	1.60	0.49
1:0:1791:C:H2'	1:0:1792:C:H5''	1.95	0.49
1:0:1889:G:H2'	1:0:1890:G:C8	2.48	0.49
1:0:441:A:H2'	1:0:442:A:O4'	2.11	0.49
1:0:693:A:H2'	1:0:694:G:C8	2.47	0.49
1:0:84:G:H2'	1:0:85:C:C6	2.48	0.49
1:0:108:G:H2'	1:0:109:A:C8	2.48	0.49
1:0:1793:A:H2'	1:0:1794:A:C8	2.48	0.49
1:0:2093:G:H2'	1:0:2094:C:C6	2.47	0.49
1:0:2235:G:H2'	1:0:2236:U:C6	2.48	0.49
1:0:2494:C:H2'	1:0:2495:G:H8	1.78	0.49
1:0:2503:G:C2'	1:0:2504:G:H5''	2.43	0.49
1:0:83:A:C6	1:0:98:U:H1'	2.46	0.49
1:0:108:G:H2'	1:0:109:A:H8	1.78	0.49
1:0:1455:C:H2'	1:0:1456:C:C6	2.48	0.49
1:0:1629:G:N1	1:0:1633:C:N4	2.61	0.49
1:0:1665:C:N4	1:0:1993:G:H1	2.11	0.49
1:0:541:C:H2'	1:0:2002:A:N1	2.27	0.49
1:0:2301:A:H2'	1:0:2302:G:O4'	2.13	0.49
1:0:860:U:O2'	1:0:861:G:H5'	2.13	0.49
1:0:930:A:H5'	1:0:931:G:C8	2.47	0.49
1:0:1141:U:O2'	1:0:1142:G:OP1	2.26	0.49
1:0:1686:A:H2'	1:0:1687:C:H5'	1.94	0.49
1:0:2370:G:HO2'	1:0:2371:A:H2	1.61	0.49
1:0:2794:G:H3'	1:0:2796:A:N6	2.21	0.49
1:0:2799:C:H2'	1:0:2800:C:O4'	2.12	0.49
1:0:2852:G:H2'	1:0:2853:U:O4'	2.13	0.49
1:0:756:C:H2'	1:0:757:U:C6	2.48	0.49
1:0:951:G:C3'	1:0:952:A:H5''	2.43	0.49
1:0:1016:C:H2'	1:0:1017:C:C6	2.48	0.49

Continued on next page...

Continued from previous page...

Atom-1	Atom-2	Interatomic distance (Å)	Clash overlap (Å)
1:0:1678:G:H2'	1:0:1679:U:C6	2.47	0.49
1:0:1685:A:C6	1:0:1691:G:H1'	2.48	0.49
1:0:1825:C:O2'	1:0:1826:U:H5'	2.13	0.49
1:0:211:U:O2'	1:0:212:U:H5'	2.13	0.49
1:0:338:G:H1	1:0:346:C:H42	1.61	0.49
1:0:35:G:H1'	1:0:466:A:H1'	1.95	0.49
1:0:626:A:O2'	1:0:627:A:H5'	2.13	0.49
1:0:780:U:H2'	1:0:781:G:C8	2.48	0.49
1:0:790:A:H2'	1:0:791:G:C8	2.48	0.49
1:0:173:A:H61	1:0:844:G:H21	1.59	0.49
1:0:942:U:C2'	1:0:943:U:H5'	2.42	0.49
1:0:1040:A:H2'	1:0:1041:G:H5'	1.93	0.48
1:0:1435:G:H21	1:0:1511:A:N6	2.12	0.48
1:0:1598:C:H2'	1:0:1599:G:O4'	2.13	0.48
1:0:1729:C:H2'	1:0:1730:G:C8	2.48	0.48
1:0:2026:C:H2'	1:0:2027:C:C6	2.48	0.48
1:0:2093:G:O2'	1:0:2094:C:P	2.71	0.48
1:0:213:C:H42	1:0:238:G:H22	1.60	0.48
1:0:2426:G:H5'	1:0:2480:C:N4	2.22	0.48
1:0:2564:U:H4'	1:0:2565:C:H5'	1.94	0.48
1:0:2574:G:H2'	1:0:2574:G:N3	2.28	0.48
1:0:1349:A:H2'	1:0:1350:G:C8	2.48	0.48
1:0:1715:A:H1'	1:0:1717:A:C1'	2.43	0.48
1:0:181:A:H4'	1:0:182:G:O5'	2.12	0.48
1:0:172:A:H4'	1:0:228:A:H4'	1.94	0.48
1:0:2343:C:H2'	1:0:2344:G:O4'	2.13	0.48
1:0:2782:G:C2'	1:0:2783:U:OP1	2.61	0.48
1:0:429:C:H2'	1:0:430:C:O4'	2.13	0.48
1:0:941:U:H2'	1:0:942:U:C6	2.48	0.48
1:0:1182:U:C3'	1:0:1183:C:H5''	2.43	0.48
1:0:1871:G:C2'	1:0:1871:G:N3	2.76	0.48
1:0:476:G:H21	1:0:696:U:H1'	1.78	0.48
1:0:1038:U:H2'	1:0:1039:A:C8	2.49	0.48
1:0:1380:C:N4	1:0:1799:A:N1	2.62	0.48
1:0:1495:G:HO2'	1:0:1496:G:P	2.36	0.48
1:0:1679:U:H2'	1:0:1680:U:H5''	1.94	0.48
1:0:1682:A:H2'	1:0:1683:G:C8	2.48	0.48
1:0:2085:G:H2'	1:0:2086:U:C6	2.49	0.48
1:0:873:U:O2	1:0:2246:A:H5''	2.13	0.48
1:0:2492:G:H2'	1:0:2493:U:C6	2.49	0.48
1:0:2503:G:H2'	1:0:2504:G:H5''	1.96	0.48

Continued on next page...

Continued from previous page...

Atom-1	Atom-2	Interatomic distance (Å)	Clash overlap (Å)
1:0:427:C:H2'	1:0:428:A:C8	2.49	0.48
1:0:1099:A:H5''	1:0:1100:G:N7	2.28	0.48
1:0:1458:A:H3'	1:0:1459:U:H5'	1.96	0.48
1:0:204:A:H4'	1:0:205:A:N7	2.28	0.48
1:0:2308:A:H2'	1:0:2309:G:C8	2.48	0.48
1:0:2434:G:H2'	1:0:2435:C:C6	2.49	0.48
1:0:742:G:N3	1:0:742:G:C2'	2.77	0.48
1:0:1046:U:H2'	1:0:1047:G:C8	2.49	0.48
1:0:1141:U:O2'	1:0:1142:G:P	2.72	0.48
1:0:1807:A:HO2'	1:0:1808:C:P	2.36	0.48
1:0:2220:A:H2'	1:0:2221:G:C8	2.48	0.48
1:0:2421:C:O2'	1:0:2422:C:H5'	2.13	0.48
1:0:2708:U:H2'	1:0:2709:C:C6	2.49	0.48
1:0:323:G:H2'	1:0:324:C:C6	2.48	0.48
1:0:367:G:C3'	1:0:368:A:H5''	2.44	0.48
1:0:42:G:H2'	1:0:43:A:O4'	2.13	0.48
1:0:210:A:N6	1:0:442:A:H61	2.11	0.48
1:0:1391:A:H2'	1:0:1392:U:C5	2.49	0.48
1:0:1742:G:H2'	1:0:1743:C:C6	2.48	0.48
1:0:2025:A:H2'	1:0:2026:C:H5''	1.94	0.48
1:0:477:A:H2'	1:0:478:G:O4'	2.14	0.48
1:0:830:C:O2	1:0:852:U:H4'	2.14	0.48
1:0:568:G:H5''	1:0:1019:U:H5'	1.95	0.48
1:0:1316:G:H2'	1:0:1317:G:C8	2.49	0.48
1:0:1429:A:H1'	1:0:1603:A:C6	2.49	0.48
1:0:1436:G:H2'	1:0:1437:A:C8	2.49	0.48
1:0:1686:A:O2'	1:0:2528:G:H5'	2.14	0.48
1:0:225:G:H21	1:0:2410:U:H1'	1.77	0.48
1:0:2377:U:O2'	1:0:2378:G:P	2.71	0.48
1:0:2424:G:H2'	1:0:2425:G:O4'	2.14	0.48
1:0:2815:C:H2'	1:0:2816:C:C6	2.49	0.48
1:0:478:G:O2'	1:0:479:G:H5'	2.14	0.48
1:0:569:C:H2'	1:0:570:G:C8	2.49	0.48
1:0:979:A:H2'	1:0:980:G:C8	2.49	0.48
1:0:1033:G:H22	1:0:1150:C:C2'	2.26	0.48
1:0:1571:G:H2'	1:0:1572:C:C6	2.49	0.48
1:0:2204:A:O2'	1:0:2205:C:OP2	2.32	0.48
1:0:2212:U:H2'	1:0:2213:G:C8	2.49	0.48
1:0:239:A:H4'	1:0:620:G:H5'	1.95	0.48
1:0:1326:U:H1'	1:0:1626:A:N3	2.29	0.48
1:0:1684:G:H2'	1:0:1974:U:O4	2.14	0.48

Continued on next page...

Continued from previous page...

Atom-1	Atom-2	Interatomic distance (Å)	Clash overlap (Å)
1:0:2372:A:H2'	1:0:2373:C:H6	1.77	0.48
1:0:240:U:H4'	1:0:443:A:H5'	1.96	0.48
1:0:2830:U:H2'	1:0:2831:A:C8	2.49	0.48
1:0:845:U:H2'	1:0:846:A:C8	2.49	0.48
1:0:1036:G:H1'	1:0:1145:C:C4'	2.44	0.47
1:0:1712:G:N3	1:0:1712:G:H3'	2.29	0.47
1:0:2721:A:N6	1:0:2743:G:H21	2.10	0.47
1:0:546:A:H2'	1:0:547:U:C6	2.49	0.47
1:0:670:U:H2'	1:0:671:A:C8	2.49	0.47
1:0:864:C:H2'	1:0:865:A:H8	1.79	0.47
1:0:1028:G:H2'	1:0:1029:C:C6	2.50	0.47
1:0:2278:A:H2'	1:0:2279:G:C8	2.49	0.47
1:0:2316:G:H2'	1:0:2317:G:H8	1.78	0.47
1:0:1471:G:H1	1:0:2682:C:H42	1.62	0.47
1:0:452:G:H2'	1:0:453:U:O4'	2.14	0.47
1:0:664:C:H2'	1:0:665:A:C8	2.49	0.47
1:0:974:U:H2'	1:0:975:C:C6	2.49	0.47
1:0:1014:G:O2'	1:0:1015:U:H5'	2.14	0.47
1:0:595:A:H62	1:0:1264:C:N4	2.12	0.47
1:0:190:A:H2'	1:0:191:G:C8	2.49	0.47
1:0:192:G:C4'	1:0:193:A:H4'	2.45	0.47
1:0:548:G:H2'	1:0:549:G:C8	2.49	0.47
1:0:1821:A:H5''	1:0:1822:C:H5	1.79	0.47
1:0:2009:U:H2'	1:0:2010:G:C8	2.49	0.47
1:0:2035:G:H2'	1:0:2036:G:C8	2.45	0.47
1:0:2168:A:C2'	1:0:2169:A:H5'	2.44	0.47
1:0:583:C:O2'	1:0:584:A:P	2.71	0.47
1:0:67:G:N2	1:0:73:A:O5'	2.47	0.47
1:0:1069:G:O2'	1:0:1070:G:H5'	2.14	0.47
1:0:1226:A:C6	1:0:1250:A:H1'	2.49	0.47
1:0:1316:G:H2'	1:0:1317:G:H8	1.79	0.47
1:0:161:U:H2'	1:0:162:C:C6	2.49	0.47
1:0:1793:A:H2'	1:0:1794:A:H8	1.80	0.47
1:0:1821:A:H3'	1:0:1822:C:H6	1.80	0.47
1:0:224:G:C5	1:0:226:C:H1'	2.48	0.47
1:0:2468:G:H2'	1:0:2469:G:O4'	2.15	0.47
1:0:2523:G:O2'	1:0:2524:G:H5'	2.14	0.47
1:0:701:U:H1'	1:0:800:U:H5'	1.97	0.47
1:0:824:U:H1'	1:0:1264:C:C1'	2.43	0.47
1:0:1386:A:H2'	1:0:1387:G:O4'	2.14	0.47
1:0:1436:G:C1'	1:0:1508:G:H21	2.21	0.47

Continued on next page...

Continued from previous page...

Atom-1	Atom-2	Interatomic distance (Å)	Clash overlap (Å)
1:0:2069:U:H2'	1:0:2070:G:C8	2.49	0.47
1:0:2211:U:H2'	1:0:2212:U:C6	2.49	0.47
1:0:2378:G:H2'	1:0:2379:G:H8	1.80	0.47
1:0:2402:U:H5'	1:0:2404:A:N7	2.30	0.47
1:0:1263:G:O2'	1:0:1264:C:P	2.73	0.47
1:0:1344:C:H2'	1:0:1346:C:OP1	2.14	0.47
1:0:1436:G:H1'	1:0:1508:G:N2	2.18	0.47
1:0:1679:U:C2'	1:0:1680:U:H5''	2.45	0.47
1:0:1809:G:O2'	1:0:1810:U:H5'	2.14	0.47
1:0:2021:G:H2'	1:0:2022:C:C6	2.50	0.47
1:0:2062:U:H4'	1:0:2412:A:H2	1.79	0.47
1:0:2658:A:H2'	1:0:2659:C:C6	2.50	0.47
1:0:565:A:H2'	1:0:566:U:C6	2.50	0.47
1:0:635:C:H3'	1:0:636:G:H5''	1.97	0.47
1:0:643:A:H2'	1:0:644:A:C8	2.49	0.47
1:0:703:A:H2'	1:0:704:G:C8	2.50	0.47
1:0:1039:A:H2'	1:0:1040:A:C8	2.48	0.47
1:0:1184:G:H2'	1:0:1185:C:H5'	1.97	0.47
1:0:1981:A:H2'	1:0:1982:C:C6	2.49	0.47
1:0:246:C:N3	1:0:247:A:N6	2.63	0.47
1:0:2651:U:H2'	1:0:2652:G:C8	2.50	0.47
1:0:763:A:C2	1:0:765:C:H1'	2.49	0.47
1:0:780:U:H2'	1:0:781:G:H8	1.80	0.47
1:0:84:G:O2'	1:0:85:C:H5'	2.15	0.47
1:0:109:A:H2'	1:0:110:U:H5''	1.97	0.47
1:0:1259:A:H2'	1:0:1260:A:O4'	2.14	0.47
1:0:1993:G:H2'	1:0:1994:U:C6	2.50	0.47
1:0:2204:A:H1'	1:0:2205:C:C5	2.49	0.47
1:0:2307:A:H2'	1:0:2308:A:C8	2.50	0.47
1:0:2560:G:H4'	1:0:2561:G:C8	2.50	0.47
1:0:2564:U:H5''	1:0:2565:C:H5'	1.96	0.47
1:0:2757:G:H5'	1:0:2761:A:H1'	1.97	0.47
1:0:926:C:H2'	1:0:927:C:H5'	1.95	0.47
1:0:1418:C:H2'	1:0:1419:G:H8	1.80	0.47
1:0:1578:U:H2'	1:0:1579:G:C8	2.50	0.47
1:0:1915:A:N6	1:0:1951:G:H21	1.99	0.47
1:0:2137:G:H2'	1:0:2138:U:C6	2.50	0.47
1:0:2642:G:H2'	1:0:2643:G:O4'	2.15	0.47
1:0:432:C:H2'	1:0:433:G:H8	1.80	0.47
1:0:539:A:N6	1:0:2024:U:H3	2.12	0.47
1:0:556:A:H2'	1:0:557:U:H5'	1.97	0.47

Continued on next page...

Continued from previous page...

Atom-1	Atom-2	Interatomic distance (Å)	Clash overlap (Å)
1:0:629:C:C2'	1:0:630:G:H5'	2.44	0.47
1:0:1269:G:H2'	1:0:1270:C:C6	2.50	0.47
1:0:2199:C:H2'	1:0:2200:G:C8	2.49	0.47
1:0:241:C:C2'	1:0:242:A:H5''	2.44	0.47
1:0:2727:G:N1	1:0:2735:C:H5''	2.29	0.47
1:0:2809:A:H2'	1:0:2810:A:H5'	1.97	0.47
1:0:534:U:H4'	1:0:564:U:O2'	2.15	0.47
1:0:758:G:H2'	1:0:759:C:H5'	1.96	0.47
1:0:173:A:N6	1:0:844:G:H21	2.13	0.47
1:0:1039:A:H2'	1:0:1040:A:H8	1.80	0.46
1:0:1354:A:N6	1:0:1407:G:H22	2.11	0.46
1:0:1829:C:C2'	1:0:1830:C:H5'	2.45	0.46
1:0:2057:U:H2'	1:0:2058:U:C6	2.50	0.46
1:0:207:U:H2'	1:0:208:C:C6	2.50	0.46
1:0:2324:G:C4'	1:0:2326:C:H5''	2.43	0.46
1:0:2393:G:H2'	1:0:2394:G:H8	1.80	0.46
1:0:2403:C:H2'	1:0:2408:G:O2'	2.15	0.46
1:0:2504:G:H2'	1:0:2505:G:H8	1.79	0.46
1:0:2499:C:N4	1:0:2521:A:H2	2.10	0.46
1:0:2782:G:H2'	1:0:2783:U:OP1	2.15	0.46
1:0:55:A:H2'	1:0:56:C:H6	1.80	0.46
1:0:776:G:N3	1:0:776:G:C2'	2.79	0.46
1:0:819:C:H2'	1:0:820:U:C6	2.50	0.46
1:0:869:C:O2'	1:0:870:C:H5'	2.15	0.46
1:0:971:A:H2	1:0:2475:C:H1'	1.80	0.46
1:0:152:G:O2'	1:0:153:A:H5'	2.15	0.46
1:0:1572:C:C3'	1:0:1573:G:H5''	2.45	0.46
1:0:1975:G:H4'	1:0:1976:U:H5	1.80	0.46
1:0:2858:A:H3'	1:0:2859:U:C5'	2.44	0.46
1:0:595:A:H2	1:0:822:G:N3	2.14	0.46
1:0:986:A:H2'	1:0:987:G:H5'	1.97	0.46
1:0:1480:G:H2'	1:0:1481:U:H5'	1.98	0.46
1:0:198:A:O2'	1:0:199:A:P	2.74	0.46
1:0:2437:G:H4'	1:0:2438:A:N7	2.30	0.46
1:0:2448:A:H2'	1:0:2449:G:O4'	2.14	0.46
1:0:236:C:O2	1:0:632:A:H1'	2.15	0.46
1:0:878:C:O2'	1:0:879:A:P	2.72	0.46
1:0:1290:A:H2'	1:0:1291:G:C8	2.51	0.46
1:0:1495:G:H2'	1:0:1496:G:C8	2.51	0.46
1:0:2717:G:H2'	1:0:2718:A:C8	2.51	0.46
1:0:2783:U:O2'	1:0:2784:A:H4'	2.16	0.46

Continued on next page...

Continued from previous page...

Atom-1	Atom-2	Interatomic distance (Å)	Clash overlap (Å)
1:0:2825:A:H2'	1:0:2826:C:C6	2.50	0.46
1:0:387:A:H2'	1:0:388:G:O4'	2.16	0.46
1:0:697:G:C2'	1:0:698:A:H5'	2.46	0.46
1:0:798:G:H2'	1:0:799:C:H5'	1.97	0.46
1:0:1486:A:H2'	1:0:1487:C:C6	2.50	0.46
1:0:1496:G:H5'	1:0:1575:C:N4	2.30	0.46
1:0:1579:G:H2'	1:0:1580:C:C6	2.51	0.46
1:0:2276:C:O2	1:0:2301:A:H1'	2.16	0.46
1:0:2444:C:O2'	1:0:2445:C:H5'	2.16	0.46
1:0:2014:A:H62	1:0:2477:C:H1'	1.79	0.46
1:0:2532:G:H1'	1:0:2561:G:C2	2.50	0.46
1:0:2698:G:H2'	1:0:2699:G:C8	2.51	0.46
1:0:337:G:H2'	1:0:338:G:C8	2.51	0.46
1:0:771:C:H2'	1:0:772:G:H8	1.80	0.46
1:0:887:G:O2'	1:0:888:G:H5'	2.15	0.46
1:0:9:U:H2'	1:0:10:A:C8	2.51	0.46
1:0:1147:G:H2'	1:0:1148:G:C8	2.51	0.46
1:0:1452:U:H5'	1:0:1532:A:O2'	2.15	0.46
1:0:1140:A:N6	1:0:2469:G:H5''	2.31	0.46
1:0:2526:U:H2'	1:0:2527:G:C8	2.51	0.46
1:0:2533:U:H2'	1:0:2534:U:C6	2.51	0.46
1:0:2784:A:H3'	1:0:2785:A:C8	2.48	0.46
1:0:85:C:O2'	1:0:86:U:H5'	2.16	0.46
1:0:1223:G:H4'	1:0:1224:A:O5'	2.16	0.46
1:0:1301:U:H2'	1:0:1664:G:N2	2.30	0.46
1:0:1429:A:N6	1:0:1602:G:H5'	2.31	0.46
1:0:1760:G:H2'	1:0:1761:G:C8	2.50	0.46
1:0:1962:C:O2'	1:0:1963:G:H5'	2.16	0.46
1:0:2329:C:N4	1:0:2361:G:H22	2.14	0.46
1:0:2800:C:H2'	1:0:2801:A:O4'	2.15	0.46
1:0:324:C:H2'	1:0:325:U:O4'	2.15	0.46
1:0:365:U:H2'	1:0:366:U:C6	2.51	0.46
1:0:636:G:H2'	1:0:637:G:H5'	1.97	0.46
1:0:738:G:H2'	1:0:739:G:O4'	2.15	0.46
1:0:1068:A:H2'	1:0:1069:G:H8	1.81	0.46
1:0:1495:G:O2'	1:0:1496:G:P	2.73	0.46
1:0:1835:C:H2'	1:0:1836:C:C6	2.50	0.46
1:0:1836:C:H2'	1:0:1837:G:C8	2.50	0.46
1:0:2055:G:H2'	1:0:2056:C:C6	2.51	0.46
1:0:2333:A:H2'	1:0:2334:C:C6	2.51	0.46
1:0:2426:G:HO2'	1:0:2427:A:P	2.39	0.46

Continued on next page...

Continued from previous page...

Atom-1	Atom-2	Interatomic distance (Å)	Clash overlap (Å)
1:0:2668:U:O2'	1:0:2669:C:P	2.74	0.46
1:0:2676:G:H2'	1:0:2677:U:C6	2.51	0.46
1:0:313:U:H2'	1:0:314:G:C8	2.50	0.46
1:0:635:C:C3'	1:0:636:G:H5''	2.46	0.46
1:0:689:A:C8	1:0:2422:C:H1'	2.51	0.46
1:0:918:A:H2'	1:0:919:U:C5'	2.42	0.46
1:0:952:A:H2'	1:0:953:G:O4'	2.16	0.46
1:0:1278:A:H4'	1:0:1279:G:O5'	2.16	0.46
1:0:1279:G:H2'	1:0:1280:U:OP2	2.16	0.46
1:0:1427:G:C2'	1:0:1428:G:H5'	2.44	0.46
1:0:2093:G:H2'	1:0:2094:C:C5	2.51	0.46
1:0:2196:U:H2'	1:0:2197:U:C6	2.51	0.46
1:0:2278:A:H2'	1:0:2279:G:H8	1.81	0.46
1:0:2459:C:C2'	1:0:2460:G:H5'	2.46	0.46
1:0:560:G:H2'	1:0:561:U:C6	2.50	0.46
1:0:932:G:H2'	1:0:933:G:C8	2.51	0.46
1:0:1029:C:H3'	1:0:1030:U:H5''	1.96	0.46
1:0:1619:A:H3'	1:0:1619:A:N3	2.31	0.46
1:0:760:U:O2	1:0:1997:A:H1'	2.16	0.46
1:0:19:C:H2'	1:0:20:C:C6	2.50	0.46
1:0:2161:C:H2'	1:0:2162:C:C6	2.50	0.46
1:0:2633:A:N6	1:0:2646:C:N4	2.63	0.46
1:0:1120:C:H2'	1:0:2731:G:N2	2.31	0.46
1:0:32:C:H2'	1:0:33:C:C6	2.51	0.46
1:0:567:G:H2'	1:0:568:G:C8	2.51	0.46
1:0:8:A:H2'	1:0:9:U:C6	2.50	0.46
1:0:1257:U:H2'	1:0:1258:G:C8	2.51	0.45
1:0:130:C:H2'	1:0:131:C:C6	2.51	0.45
1:0:1313:U:O2'	1:0:1314:A:O5'	2.32	0.45
1:0:1331:G:H2'	1:0:1332:G:C8	2.51	0.45
1:0:1685:A:N6	1:0:1691:G:H1'	2.31	0.45
1:0:1966:C:H4'	1:0:2585:C:H4'	1.97	0.45
1:0:2093:G:O2'	1:0:2094:C:OP1	2.33	0.45
1:0:2106:G:H2'	1:0:2107:G:C8	2.51	0.45
1:0:2259:G:H2'	1:0:2260:C:C6	2.51	0.45
1:0:2558:C:O2'	1:0:2559:U:H5'	2.16	0.45
1:0:2628:C:H2'	1:0:2629:U:C6	2.51	0.45
1:0:632:A:C2'	1:0:633:G:H5'	2.46	0.45
1:0:758:G:N2	1:0:763:A:N1	2.63	0.45
1:0:1380:C:C2'	1:0:1381:G:H5'	2.45	0.45
1:0:1888:C:H5''	1:0:1889:G:C5'	2.46	0.45

Continued on next page...

Continued from previous page...

Atom-1	Atom-2	Interatomic distance (Å)	Clash overlap (Å)
1:0:2018:G:H3'	1:0:2019:C:H5'	1.98	0.45
1:0:2193:C:H2'	1:0:2194:A:O4'	2.16	0.45
1:0:1937:G:N3	1:0:2530:C:H5'	2.31	0.45
1:0:931:G:O2'	1:0:932:G:H5'	2.16	0.45
1:0:1259:A:H2'	1:0:1260:A:H8	1.80	0.45
1:0:1429:A:O2'	1:0:1430:G:H4'	2.16	0.45
1:0:1703:C:H2'	1:0:1704:G:O4'	2.16	0.45
1:0:1747:G:H1'	1:0:1749:G:C2	2.51	0.45
1:0:187:U:H2'	1:0:188:G:C8	2.52	0.45
1:0:1886:G:H2'	1:0:1887:G:C8	2.51	0.45
1:0:1906:U:H2'	1:0:1907:C:C6	2.51	0.45
1:0:2022:C:H2'	1:0:2023:C:C6	2.51	0.45
1:0:199:A:H61	1:0:209:G:H1'	1.82	0.45
1:0:2376:G:H2'	1:0:2377:U:C6	2.52	0.45
1:0:2418:A:H1'	1:0:2565:C:H4'	1.97	0.45
1:0:2493:U:H2'	1:0:2494:C:C6	2.52	0.45
1:0:1949:A:O2'	1:0:2572:U:H5'	2.16	0.45
1:0:2668:U:HO2'	1:0:2669:C:P	2.39	0.45
1:0:2824:C:H1'	1:0:2843:A:C2	2.51	0.45
1:0:2862:G:O2'	1:0:2863:U:H5'	2.16	0.45
1:0:601:A:H3'	1:0:602:C:C5'	2.46	0.45
1:0:694:G:H2'	1:0:695:G:H8	1.81	0.45
1:0:872:G:O2'	1:0:2247:A:N3	2.48	0.45
1:0:2475:C:H2'	1:0:2476:A:H5'	1.98	0.45
1:0:2600:A:H2'	1:0:2601:C:C6	2.52	0.45
1:0:2807:U:C5	1:0:2859:U:H4'	2.52	0.45
1:0:307:C:H2'	1:0:308:C:C6	2.52	0.45
1:0:317:U:H3'	1:0:318:G:H5''	1.97	0.45
1:0:40:U:H2'	1:0:41:G:C8	2.51	0.45
1:0:54:G:H2'	1:0:55:A:C8	2.51	0.45
1:0:675:C:H2'	1:0:676:G:C8	2.52	0.45
1:0:1223:G:O2'	1:0:1224:A:P	2.74	0.45
1:0:1278:A:HO2'	1:0:1279:G:P	2.37	0.45
1:0:1659:G:H2'	1:0:1660:G:C8	2.51	0.45
1:0:2709:C:H2'	1:0:2710:C:C6	2.51	0.45
1:0:297:A:H2'	1:0:298:C:C6	2.50	0.45
1:0:340:G:H1'	1:0:488:A:C4	2.52	0.45
1:0:462:G:H2'	1:0:463:C:H5'	1.99	0.45
1:0:489:A:N6	1:0:491:A:H62	2.14	0.45
1:0:697:G:O2'	1:0:698:A:H5'	2.17	0.45
1:0:831:G:H5'	1:0:852:U:OP1	2.17	0.45

Continued on next page...

Continued from previous page...

Atom-1	Atom-2	Interatomic distance (Å)	Clash overlap (Å)
1:0:845:U:H2'	1:0:846:A:H8	1.80	0.45
1:0:13:A:H1'	1:0:536:A:H62	1.82	0.45
1:0:1586:A:H2'	1:0:1587:A:C8	2.52	0.45
1:0:1770:U:H2'	1:0:1774:A:H62	1.81	0.45
1:0:1886:G:H2'	1:0:1887:G:H8	1.82	0.45
1:0:1938:U:H2'	1:0:1939:U:H5'	1.97	0.45
1:0:2277:A:H2'	1:0:2278:A:O4'	2.16	0.45
1:0:2475:C:C2'	1:0:2476:A:H5'	2.46	0.45
1:0:2694:G:H2'	1:0:2695:C:C6	2.52	0.45
1:0:2809:A:N6	1:0:2854:G:H2'	2.31	0.45
1:0:306:G:H2'	1:0:307:C:C6	2.52	0.45
1:0:788:G:C5'	1:0:790:A:H1'	2.46	0.45
1:0:81:C:H4'	1:0:307:C:H5'	1.98	0.45
1:0:1225:G:H2'	1:0:1249:G:H1	1.82	0.45
1:0:1286:U:H4'	1:0:1288:A:OP1	2.17	0.45
1:0:2204:A:O2'	1:0:2205:C:C6	2.69	0.45
1:0:2474:G:O2'	1:0:2475:C:H5'	2.16	0.45
1:0:2524:G:H2'	1:0:2525:U:O4'	2.16	0.45
1:0:421:G:H2'	1:0:422:C:C6	2.51	0.45
1:0:529:U:H2'	1:0:530:G:C8	2.51	0.45
1:0:709:A:H2'	1:0:710:C:C6	2.52	0.45
1:0:1677:C:H2'	1:0:1678:G:H8	1.82	0.45
1:0:1712:G:C2'	1:0:1713:G:H5'	2.46	0.45
1:0:1888:C:C5'	1:0:1889:G:H5''	2.45	0.45
1:0:192:G:H4'	1:0:193:A:O5'	2.16	0.45
1:0:2321:C:C2'	1:0:2322:U:H5'	2.46	0.45
1:0:916:U:H2'	1:0:917:U:C6	2.52	0.45
1:0:1130:U:H2'	1:0:1131:G:C8	2.52	0.45
1:0:1163:C:O2'	1:0:1164:C:H5'	2.16	0.45
1:0:1251:G:H2'	1:0:1252:C:H6	1.80	0.45
1:0:1307:U:H2'	1:0:1308:C:O4'	2.17	0.45
1:0:1494:G:H2'	1:0:1495:G:C8	2.51	0.45
1:0:211:U:C2'	1:0:212:U:H5'	2.46	0.45
1:0:2205:C:H2'	1:0:2206:C:H6	1.80	0.45
1:0:2377:U:O2'	1:0:2378:G:OP1	2.33	0.45
1:0:2455:A:O2'	1:0:2456:U:H5'	2.17	0.45
1:0:2591:C:O2'	1:0:2592:U:H5'	2.17	0.45
1:0:2639:A:H2'	1:0:2640:G:O4'	2.16	0.45
1:0:541:C:O2	1:0:2002:A:N1	2.50	0.45
1:0:811:G:O2'	1:0:812:G:H5'	2.17	0.45
1:0:1452:U:H5''	1:0:1533:G:H5'	1.99	0.45

Continued on next page...

Continued from previous page...

Atom-1	Atom-2	Interatomic distance (Å)	Clash overlap (Å)
1:0:1855:G:H4'	1:0:2390:A:H4'	1.99	0.45
1:0:2159:A:H2'	1:0:2160:C:C6	2.52	0.45
1:0:2235:G:H2'	1:0:2236:U:H6	1.81	0.45
1:0:699:G:H3'	1:0:699:G:N3	2.32	0.45
1:0:58:C:O2	1:0:73:A:OP2	2.34	0.45
1:0:1007:A:H2'	1:0:1008:G:C8	2.52	0.44
1:0:1346:C:H2'	1:0:1347:C:C6	2.52	0.44
1:0:1367:A:H2'	1:0:1368:G:O4'	2.17	0.44
1:0:1608:U:H2'	1:0:1609:G:C8	2.52	0.44
1:0:1628:C:H2'	1:0:1629:G:C8	2.52	0.44
1:0:1888:C:C4'	1:0:1889:G:H5''	2.47	0.44
1:0:1937:G:H4'	1:0:2529:G:H21	1.81	0.44
1:0:2512:A:H2'	1:0:2513:A:O4'	2.17	0.44
1:0:1204:G:H2'	1:0:1205:G:C8	2.52	0.44
1:0:1291:G:H2'	1:0:1292:A:C8	2.52	0.44
1:0:1859:A:H2'	1:0:1860:A:C8	2.53	0.44
1:0:1777:A:H5'	1:0:1963:G:H21	1.82	0.44
1:0:2120:C:H2'	1:0:2121:U:O4'	2.18	0.44
1:0:2239:C:O2'	1:0:2240:C:H5'	2.17	0.44
1:0:2429:A:O2'	1:0:2430:A:H5'	2.16	0.44
1:0:331:U:H2'	1:0:332:C:H5''	1.98	0.44
1:0:582:G:H2'	1:0:583:C:H3'	2.00	0.44
1:0:653:G:H21	1:0:655:A:H1'	1.81	0.44
1:0:837:U:H2'	1:0:838:A:C8	2.53	0.44
1:0:968:C:H2'	1:0:970:A:OP1	2.18	0.44
1:0:117:A:H4'	1:0:118:U:C6	2.53	0.44
1:0:237:G:H2'	1:0:238:G:O4'	2.17	0.44
1:0:2510:A:N6	1:0:2641:A:H61	2.10	0.44
1:0:2668:U:C2'	1:0:2669:C:OP2	2.66	0.44
1:0:245:C:H5'	1:0:372:U:O2'	2.17	0.44
1:0:514:G:C2'	1:0:514:G:N3	2.79	0.44
1:0:69:G:O2'	1:0:70:A:C8	2.66	0.44
1:0:736:G:H2'	1:0:737:C:O4'	2.17	0.44
1:0:935:C:H2'	1:0:936:A:C8	2.52	0.44
1:0:1002:C:H2'	1:0:1003:C:C6	2.53	0.44
1:0:2227:C:C2'	1:0:2228:U:H5'	2.41	0.44
1:0:2240:C:H2'	1:0:2241:U:H5'	1.98	0.44
1:0:2393:G:H2'	1:0:2394:G:C8	2.53	0.44
1:0:403:A:H4'	1:0:425:A:C5'	2.39	0.44
1:0:437:G:O2'	1:0:438:G:H5'	2.16	0.44
1:0:1278:A:O2'	1:0:1279:G:O5'	2.35	0.44

Continued on next page...

Continued from previous page...

Atom-1	Atom-2	Interatomic distance (Å)	Clash overlap (Å)
1:0:1319:C:H2'	1:0:1320:A:H8	1.82	0.44
1:0:1821:A:H5''	1:0:1822:C:C5	2.52	0.44
1:0:192:G:O2'	1:0:193:A:C5'	2.66	0.44
1:0:2002:A:H61	1:0:2018:G:N2	2.16	0.44
1:0:2136:G:H2'	1:0:2137:G:C8	2.52	0.44
1:0:2619:G:H2'	1:0:2620:G:C8	2.53	0.44
1:0:2712:G:H5'	1:0:2713:A:C8	2.52	0.44
1:0:2860:C:H2'	1:0:2861:A:O4'	2.18	0.44
1:0:604:U:H2'	1:0:605:G:H8	1.82	0.44
1:0:644:A:H2'	1:0:645:G:H5'	1.99	0.44
1:0:1008:G:H2'	1:0:1009:C:C6	2.52	0.44
1:0:1016:C:H5''	1:0:1023:U:OP2	2.18	0.44
1:0:1840:A:H2'	1:0:1841:G:H5'	2.00	0.44
1:0:2094:C:C4	1:0:2103:G:H1'	2.53	0.44
1:0:210:A:N6	1:0:442:A:N6	2.66	0.44
1:0:2161:C:O2'	1:0:2162:C:OP1	2.34	0.44
1:0:23:G:H2'	1:0:24:G:C8	2.53	0.44
1:0:2824:C:H2'	1:0:2825:A:OP2	2.17	0.44
1:0:575:U:H4'	1:0:822:G:OP2	2.17	0.44
1:0:715:U:H2'	1:0:716:U:C6	2.52	0.44
1:0:114:C:H4'	1:0:124:A:O2'	2.17	0.44
1:0:1353:A:H1'	1:0:1619:A:O4'	2.17	0.44
1:0:1605:A:H2'	1:0:1606:C:C6	2.53	0.44
1:0:1614:C:H2'	1:0:1615:C:C6	2.52	0.44
1:0:1912:G:C2'	1:0:1912:G:N3	2.79	0.44
1:0:1917:C:H2'	1:0:1918:G:H5'	2.00	0.44
1:0:2574:G:C2'	1:0:2574:G:N3	2.80	0.44
1:0:520:C:O2'	1:0:1249:G:H5''	2.18	0.44
1:0:147:G:C2	1:0:148:C:H1'	2.53	0.44
1:0:1504:G:O2'	1:0:1505:U:H5'	2.18	0.44
1:0:2265:A:H5''	1:0:2266:A:O4'	2.18	0.44
1:0:2458:U:OP1	1:0:2516:U:H1'	2.18	0.44
1:0:351:A:H2'	1:0:352:G:O4'	2.18	0.44
1:0:37:C:H2'	1:0:38:G:C8	2.53	0.44
1:0:475:U:H2'	1:0:476:G:O4'	2.17	0.44
1:0:63:A:O2'	1:0:64:C:H5'	2.18	0.44
1:0:701:U:H2'	1:0:702:A:O4'	2.18	0.44
1:0:841:G:H4'	1:0:844:G:N1	2.33	0.44
1:0:959:C:H2'	1:0:960:U:C6	2.53	0.44
1:0:1155:G:H2'	1:0:1156:U:O4'	2.18	0.44
1:0:1750:A:H1'	1:0:2690:A:C2	2.52	0.44

Continued on next page...

Continued from previous page...

Atom-1	Atom-2	Interatomic distance (Å)	Clash overlap (Å)
1:0:181:A:C4'	1:0:182:G:H4'	2.46	0.44
1:0:1899:A:O2'	1:0:1946:U:H1'	2.18	0.44
1:0:2017:U:O2'	1:0:2018:G:H5'	2.17	0.44
1:0:2369:U:H2'	1:0:2370:G:C8	2.53	0.44
1:0:2635:U:H2'	1:0:2636:A:C8	2.52	0.44
1:0:67:G:C6	1:0:72:A:C2	3.05	0.44
1:0:838:A:H4'	1:0:2407:G:C5	2.53	0.44
1:0:91:A:H2'	1:0:92:U:C6	2.53	0.44
1:0:1017:C:H2'	1:0:1018:C:O4'	2.17	0.43
1:0:1312:G:H5''	1:0:1313:U:C5'	2.36	0.43
1:0:1466:C:H2'	1:0:1467:U:O4'	2.17	0.43
1:0:1880:G:H2'	1:0:1881:U:C6	2.53	0.43
1:0:192:G:H4'	1:0:193:A:H4'	1.99	0.43
1:0:2484:G:H3'	1:0:2555:G:H1	1.83	0.43
1:0:2620:G:H2'	1:0:2621:G:H8	1.83	0.43
1:0:415:A:C2'	1:0:416:U:H5'	2.47	0.43
1:0:508:G:H2'	1:0:509:U:C6	2.52	0.43
1:0:584:A:H4'	1:0:2479:U:C5'	2.46	0.43
1:0:716:U:H2'	1:0:717:G:O4'	2.18	0.43
1:0:1480:G:C2'	1:0:1481:U:H5'	2.47	0.43
1:0:187:U:H2'	1:0:188:G:H8	1.82	0.43
1:0:1961:A:H2'	1:0:1962:C:O4'	2.18	0.43
1:0:2310:G:H2'	1:0:2311:U:O4'	2.18	0.43
1:0:2392:G:H2'	1:0:2393:G:C8	2.53	0.43
1:0:694:G:H2'	1:0:695:G:C8	2.53	0.43
1:0:859:U:H4'	1:0:860:U:C5	2.54	0.43
1:0:925:U:H4'	1:0:926:C:C6	2.53	0.43
1:0:1518:C:O2'	1:0:1519:G:P	2.76	0.43
1:0:2356:A:H2'	1:0:2357:A:C8	2.53	0.43
1:0:242:A:O2'	1:0:243:G:OP2	2.37	0.43
1:0:2680:U:H3'	1:0:2681:A:C5'	2.47	0.43
1:0:634:G:H2'	1:0:635:C:C6	2.53	0.43
1:0:987:G:H2'	1:0:988:G:H8	1.83	0.43
1:0:1055:A:H2	1:0:1121:G:H2'	1.84	0.43
1:0:173:A:N3	1:0:173:A:C2'	2.81	0.43
1:0:2795:A:N3	1:0:2795:A:H2'	2.32	0.43
1:0:420:C:H2'	1:0:421:G:C8	2.53	0.43
1:0:547:U:H2'	1:0:548:G:C8	2.53	0.43
1:0:575:U:H2'	1:0:576:A:C8	2.53	0.43
1:0:55:A:N6	1:0:69:G:O6	2.51	0.43
1:0:88:G:H3'	1:0:89:A:C5'	2.41	0.43

Continued on next page...

Continued from previous page...

Atom-1	Atom-2	Interatomic distance (Å)	Clash overlap (Å)
1:0:1075:C:H2'	1:0:1076:U:C6	2.54	0.43
1:0:1326:U:H4'	1:0:1345:G:H4'	2.01	0.43
1:0:1561:A:H2'	1:0:1562:G:O4'	2.18	0.43
1:0:1975:G:H1'	1:0:1977:C:N4	2.33	0.43
1:0:2002:A:H61	1:0:2018:G:H21	1.67	0.43
1:0:215:G:H1'	1:0:617:U:O2	2.19	0.43
1:0:2245:A:HO2'	1:0:2246:A:P	2.41	0.43
1:0:2034:A:N6	1:0:2593:A:N7	2.66	0.43
1:0:2785:A:H2'	1:0:2786:G:O4'	2.18	0.43
1:0:543:G:H2'	1:0:544:U:C6	2.53	0.43
1:0:840:U:H4'	1:0:841:G:C2	2.53	0.43
1:0:1031:C:H4'	1:0:1032:A:C8	2.54	0.43
1:0:594:G:N2	1:0:1267:A:H62	2.16	0.43
1:0:762:A:H5'	1:0:1284:G:H1'	1.99	0.43
1:0:168:A:H2'	1:0:169:C:H6	1.83	0.43
1:0:2276:C:O2'	1:0:2277:A:H5'	2.19	0.43
1:0:2757:G:H5'	1:0:2761:A:C1'	2.49	0.43
1:0:2874:A:H2'	1:0:2875:C:C6	2.54	0.43
1:0:338:G:H2'	1:0:339:U:O4'	2.19	0.43
1:0:520:C:H2'	1:0:521:U:O4'	2.19	0.43
1:0:814:G:H3'	1:0:815:A:C5'	2.49	0.43
1:0:871:U:H1'	1:0:2248:A:C5'	2.47	0.43
1:0:967:G:H1'	1:0:970:A:N7	2.34	0.43
1:0:984:A:H2'	1:0:1200:G:N2	2.32	0.43
1:0:1187:A:HO2'	1:0:1188:A:P	2.40	0.43
1:0:1271:C:H2'	1:0:1272:G:C8	2.54	0.43
1:0:1918:G:H4'	1:0:1920:A:C2	2.54	0.43
1:0:2772:U:H2'	1:0:2773:G:C8	2.53	0.43
1:0:322:A:H1'	1:0:343:A:N7	2.33	0.43
1:0:3:U:H2'	1:0:4:C:C6	2.53	0.43
1:0:457:C:O2'	1:0:458:G:H5'	2.19	0.43
1:0:878:C:HO2'	1:0:879:A:P	2.42	0.43
1:0:1227:A:H62	1:0:1248:G:H21	1.66	0.43
1:0:1518:C:C2'	1:0:1519:G:O5'	2.67	0.43
1:0:1665:C:H2'	1:0:1666:G:C8	2.54	0.43
1:0:2213:G:H2'	1:0:2214:G:H8	1.84	0.43
1:0:2244:C:H1'	1:0:2255:G:N1	2.34	0.43
1:0:2572:U:C4	1:0:2573:C:N4	2.87	0.43
1:0:820:U:H2'	1:0:821:A:C8	2.53	0.43
1:0:1194:U:H2'	1:0:1195:U:H6	1.79	0.43
1:0:953:G:H4'	1:0:1203:A:O2'	2.19	0.43

Continued on next page...

Continued from previous page...

Atom-1	Atom-2	Interatomic distance (Å)	Clash overlap (Å)
1:0:1478:U:H2'	1:0:1479:G:C8	2.54	0.43
1:0:1604:A:H2'	1:0:1605:A:O4'	2.19	0.43
1:0:2225:G:O2'	1:0:2226:A:H5'	2.19	0.43
1:0:2292:C:H2'	1:0:2293:G:C8	2.54	0.43
1:0:2436:U:H2'	1:0:2437:G:O4'	2.19	0.43
1:0:2497:A:O5'	1:0:2497:A:N3	2.52	0.43
1:0:2785:A:O2'	1:0:2786:G:H5'	2.19	0.43
1:0:2786:G:H2'	1:0:2787:A:C8	2.54	0.43
1:0:722:C:H2'	1:0:723:C:C6	2.54	0.43
1:0:820:U:H1'	1:0:2424:G:OP1	2.18	0.43
1:0:1193:G:O2'	1:0:1194:U:P	2.76	0.43
1:0:1532:A:H2'	1:0:1533:G:C8	2.53	0.43
1:0:181:A:C5'	1:0:182:G:OP1	2.62	0.43
1:0:201:G:H2'	1:0:202:A:H8	1.84	0.43
1:0:2033:C:H2'	1:0:2034:A:O4'	2.18	0.43
1:0:2602:G:OP1	1:0:2801:A:H1'	2.19	0.43
1:0:17:G:N2	1:0:564:U:H5''	2.33	0.43
1:0:607:C:H2'	1:0:608:G:C8	2.54	0.43
1:0:653:G:C2	1:0:655:A:H1'	2.54	0.43
1:0:758:G:N3	1:0:763:A:N6	2.64	0.43
1:0:810:U:H2'	1:0:811:G:H8	1.83	0.43
1:0:1292:A:H2'	1:0:1293:A:H8	1.84	0.42
1:0:128:C:C3'	1:0:129:A:H5''	2.49	0.42
1:0:1591:U:H2'	1:0:1592:U:O4'	2.18	0.42
1:0:1341:G:N2	1:0:1664:G:H1	2.15	0.42
1:0:1743:C:H2'	1:0:1744:G:C8	2.54	0.42
1:0:1790:G:O3'	1:0:1791:C:H6	2.02	0.42
1:0:211:U:H2'	1:0:212:U:O4'	2.19	0.42
1:0:1938:U:H3'	1:0:2530:C:O2'	2.19	0.42
1:0:2808:U:H3'	1:0:2809:A:C5'	2.47	0.42
1:0:342:G:H2'	1:0:343:A:C5'	2.48	0.42
1:0:538:A:C3'	1:0:539:A:H5''	2.49	0.42
1:0:541:C:H42	1:0:572:G:C1'	2.32	0.42
1:0:121:G:H2'	1:0:122:G:O4'	2.19	0.42
1:0:1489:C:H3'	1:0:1490:U:H5'	2.00	0.42
1:0:1634:A:O2'	1:0:1635:G:H5'	2.18	0.42
1:0:1455:C:HO2'	1:0:1644:G:H5''	1.85	0.42
1:0:2083:G:H22	1:0:2172:U:H3	1.66	0.42
1:0:242:A:N6	1:0:441:A:N7	2.66	0.42
1:0:54:G:H2'	1:0:55:A:H8	1.84	0.42
1:0:63:A:N6	1:0:89:A:N1	2.68	0.42

Continued on next page...

Continued from previous page...

Atom-1	Atom-2	Interatomic distance (Å)	Clash overlap (Å)
1:0:944:A:H2'	1:0:945:G:O4'	2.19	0.42
1:0:1500:U:H2'	1:0:1501:C:C6	2.55	0.42
1:0:1801:C:H3'	1:0:1802:A:H5'	2.01	0.42
1:0:189:A:H2'	1:0:190:A:C8	2.54	0.42
1:0:2133:G:H2'	1:0:2134:U:C6	2.55	0.42
1:0:2615:U:H3	1:0:2762:G:H1	1.66	0.42
1:0:509:U:H2'	1:0:510:G:O4'	2.19	0.42
1:0:616:U:C3'	1:0:617:U:H5''	2.50	0.42
1:0:1057:A:H3'	1:0:1058:G:H5'	2.00	0.42
1:0:1566:G:H2'	1:0:1567:A:C8	2.54	0.42
1:0:1762:C:H2'	1:0:1763:G:C8	2.54	0.42
1:0:192:G:O2'	1:0:193:A:P	2.77	0.42
1:0:2261:G:H4'	1:0:2368:G:O2'	2.20	0.42
1:0:2380:U:C2'	1:0:2381:A:H5'	2.44	0.42
1:0:2500:C:H4'	1:0:2544:A:C4'	2.49	0.42
1:0:415:A:O2'	1:0:416:U:H5'	2.20	0.42
1:0:532:A:H2'	1:0:533:C:C6	2.55	0.42
1:0:764:A:H3'	1:0:764:A:N3	2.34	0.42
1:0:786:U:H2'	1:0:787:A:H5'	2.01	0.42
1:0:860:U:O2	1:0:860:U:H2'	2.18	0.42
1:0:1029:C:C2'	1:0:1030:U:H5''	2.49	0.42
1:0:1193:G:O2'	1:0:1194:U:OP1	2.36	0.42
1:0:1499:A:H2'	1:0:1500:U:C6	2.54	0.42
1:0:1626:A:H5''	1:0:1627:C:OP2	2.20	0.42
1:0:1917:C:C2'	1:0:1918:G:H5'	2.49	0.42
1:0:192:G:O2'	1:0:193:A:H5''	2.19	0.42
1:0:2473:G:O2'	1:0:2474:G:H5'	2.19	0.42
1:0:2640:G:H2'	1:0:2641:A:O4'	2.18	0.42
1:0:879:A:C2'	1:0:880:C:H5'	2.49	0.42
1:0:1168:G:H2'	1:0:1169:C:C6	2.54	0.42
1:0:1274:C:O2'	1:0:1275:A:H5'	2.19	0.42
1:0:1358:C:H2'	1:0:1359:G:H5'	2.01	0.42
1:0:1451:C:H2'	1:0:1452:U:C6	2.54	0.42
1:0:1489:C:H3'	1:0:1490:U:C5'	2.50	0.42
1:0:198:A:O2'	1:0:199:A:OP2	2.30	0.42
1:0:2217:G:C2'	1:0:2217:G:N3	2.83	0.42
1:0:2250:G:O2'	1:0:2251:U:H5'	2.20	0.42
1:0:2555:G:N3	1:0:2555:G:H3'	2.35	0.42
1:0:2594:U:H2'	1:0:2595:C:C6	2.55	0.42
1:0:2633:A:H61	1:0:2646:C:N4	2.18	0.42
1:0:2710:C:O2'	1:0:2711:G:H5'	2.19	0.42

Continued on next page...

Continued from previous page...

Atom-1	Atom-2	Interatomic distance (Å)	Clash overlap (Å)
1:0:178:C:H4'	1:0:399:G:C2	2.55	0.42
1:0:404:A:H1'	1:0:424:G:O2'	2.19	0.42
1:0:521:U:C2'	1:0:522:G:H5'	2.50	0.42
1:0:652:C:N4	1:0:657:A:H61	2.09	0.42
1:0:81:C:O2'	1:0:82:G:H5'	2.20	0.42
1:0:878:C:O2'	1:0:879:A:OP1	2.35	0.42
1:0:1143:A:H2'	1:0:1144:U:C6	2.55	0.42
1:0:1332:G:H2'	1:0:1333:G:O4'	2.20	0.42
1:0:1343:C:H2'	1:0:1344:C:C6	2.55	0.42
1:0:1708:C:H2'	1:0:1709:U:O4'	2.19	0.42
1:0:1930:C:H2'	1:0:1931:G:C8	2.55	0.42
1:0:2161:C:H2'	1:0:2162:C:C5	2.55	0.42
1:0:2463:G:O2'	1:0:2464:G:H5'	2.20	0.42
1:0:2633:A:H5''	1:0:2634:G:OP1	2.20	0.42
1:0:2658:A:H2'	1:0:2659:C:H6	1.84	0.42
1:0:1016:C:H2'	1:0:1017:C:H6	1.85	0.42
1:0:1030:U:OP1	1:0:1046:U:H1'	2.20	0.42
1:0:1033:G:N2	1:0:1150:C:H2'	2.30	0.42
1:0:119:G:H1'	1:0:129:A:N1	2.35	0.42
1:0:1225:G:H2'	1:0:1249:G:N1	2.34	0.42
1:0:1495:G:O2'	1:0:1496:G:OP1	2.35	0.42
1:0:14:A:H2	1:0:2604:G:O2'	2.03	0.42
1:0:172:A:N3	1:0:227:G:N2	2.66	0.42
1:0:1807:A:O2'	1:0:1808:C:C4'	2.64	0.42
1:0:1836:C:H2'	1:0:1837:G:H8	1.84	0.42
1:0:1957:C:O2'	1:0:1958:G:H5'	2.19	0.42
1:0:2027:C:H2'	1:0:2028:C:C6	2.55	0.42
1:0:2217:G:H5'	1:0:2219:U:O4	2.19	0.42
1:0:871:U:O2	1:0:2247:A:H2'	2.19	0.42
1:0:2581:A:H2'	1:0:2582:G:OP1	2.20	0.42
1:0:319:G:H1'	1:0:511:A:H5'	2.01	0.42
1:0:48:A:O5'	1:0:50:G:H4'	2.20	0.42
1:0:579:G:H2'	1:0:2013:A:H62	1.85	0.42
1:0:987:G:H2'	1:0:988:G:C8	2.55	0.42
1:0:1028:G:H2'	1:0:1029:C:H6	1.85	0.42
1:0:1046:U:H2'	1:0:1047:G:H8	1.85	0.42
1:0:1065:A:H2'	1:0:1066:G:C8	2.55	0.42
1:0:2032:G:O2'	1:0:2033:C:H5'	2.20	0.42
1:0:2245:A:C2'	1:0:2246:A:OP2	2.67	0.42
1:0:2311:U:HO2'	1:0:2312:A:H8	1.63	0.42
1:0:820:U:H5'	1:0:2424:G:H4'	2.00	0.42

Continued on next page...

Continued from previous page...

Atom-1	Atom-2	Interatomic distance (Å)	Clash overlap (Å)
1:0:2576:G:H2'	1:0:2577:A:C8	2.55	0.42
1:0:2633:A:H4'	1:0:2634:G:C4'	2.40	0.42
1:0:2778:U:O2'	1:0:2779:C:H5'	2.19	0.42
1:0:322:A:H2	1:0:342:G:OP2	2.02	0.42
1:0:566:U:H2'	1:0:567:G:C8	2.55	0.42
1:0:617:U:H2'	1:0:618:A:O4'	2.19	0.42
1:0:239:A:H5'	1:0:619:A:O2'	2.19	0.42
1:0:1231:A:H2'	1:0:1232:U:O4'	2.19	0.42
1:0:1479:G:H2'	1:0:1480:G:C8	2.54	0.42
1:0:1671:A:H2'	1:0:1672:A:H8	1.85	0.42
1:0:328:A:O2'	1:0:329:C:H5'	2.20	0.42
1:0:354:C:H2'	1:0:355:G:O4'	2.20	0.42
1:0:438:G:H2'	1:0:439:C:C6	2.54	0.42
1:0:644:A:H2'	1:0:645:G:O4'	2.20	0.42
1:0:73:A:H4'	1:0:74:G:O4'	2.20	0.42
1:0:1448:A:H2'	1:0:1449:C:C6	2.55	0.41
1:0:1921:A:C3'	1:0:1922:U:H5''	2.50	0.41
1:0:2028:C:O2'	1:0:2029:G:H5'	2.20	0.41
1:0:2220:A:H2'	1:0:2221:G:H8	1.85	0.41
1:0:2768:C:H1'	1:0:2784:A:N7	2.35	0.41
1:0:327:C:O2'	1:0:328:A:H5'	2.20	0.41
1:0:430:C:H2'	1:0:431:G:C8	2.55	0.41
1:0:533:C:H1'	1:0:563:U:O2'	2.20	0.41
1:0:635:C:H2'	1:0:636:G:H5''	2.01	0.41
1:0:833:A:H2'	1:0:834:A:C8	2.54	0.41
1:0:956:A:N3	1:0:956:A:H2'	2.35	0.41
1:0:1172:U:H2'	1:0:1173:G:C8	2.55	0.41
1:0:1829:C:O2'	1:0:1910:A:H1'	2.20	0.41
1:0:1962:C:H2'	1:0:1963:G:H8	1.85	0.41
1:0:2056:C:H2'	1:0:2057:U:H6	1.85	0.41
1:0:2320:G:H2'	1:0:2321:C:C6	2.55	0.41
1:0:2448:A:C2'	1:0:2449:G:H5'	2.49	0.41
1:0:2470:U:H1'	1:0:2548:G:O3'	2.19	0.41
1:0:315:G:H2'	1:0:316:C:C6	2.55	0.41
1:0:607:C:H2'	1:0:608:G:H8	1.84	0.41
1:0:646:C:O2'	1:0:650:U:H5''	2.20	0.41
1:0:649:G:H2'	1:0:650:U:C6	2.55	0.41
1:0:65:C:C3'	1:0:66:U:H5'	2.49	0.41
1:0:827:C:H2'	1:0:828:C:C6	2.55	0.41
1:0:1026:U:H2'	1:0:1027:C:C6	2.56	0.41
1:0:1354:A:C2	1:0:1411:C:H4'	2.55	0.41

Continued on next page...

Continued from previous page...

Atom-1	Atom-2	Interatomic distance (Å)	Clash overlap (Å)
1:0:1557:G:H2'	1:0:1558:C:C6	2.55	0.41
1:0:1956:G:H2'	1:0:1957:C:O4'	2.20	0.41
1:0:2011:U:H2'	1:0:2012:A:C8	2.56	0.41
1:0:2348:A:H2'	1:0:2349:G:C8	2.54	0.41
1:0:2392:G:H2'	1:0:2393:G:H8	1.85	0.41
1:0:2502:G:H2'	1:0:2503:G:H8	1.85	0.41
1:0:2546:G:H2'	1:0:2547:C:C6	2.56	0.41
1:0:2836:U:H2'	1:0:2837:G:C8	2.55	0.41
1:0:1177:U:H2'	1:0:1178:C:C6	2.55	0.41
1:0:1281:A:N6	1:0:1995:G:O2'	2.53	0.41
1:0:1341:G:N2	1:0:1343:C:H1'	2.35	0.41
1:0:1594:U:H2'	1:0:1595:A:C8	2.56	0.41
1:0:1671:A:C1'	1:0:2798:A:H5'	2.50	0.41
1:0:1888:C:H2'	1:0:1913:G:C6	2.56	0.41
1:0:591:G:H2'	1:0:592:G:C8	2.56	0.41
1:0:831:G:H2'	1:0:832:A:H5''	2.02	0.41
1:0:930:A:H3'	1:0:931:G:H8	1.85	0.41
1:0:1193:G:HO2'	1:0:1194:U:P	2.43	0.41
1:0:1286:U:H2'	1:0:2692:A:H2	1.85	0.41
1:0:1329:U:H2'	1:0:1330:G:C8	2.56	0.41
1:0:1402:G:H2'	1:0:1403:U:O4'	2.21	0.41
1:0:158:A:H2'	1:0:159:A:H8	1.85	0.41
1:0:1722:G:H2'	1:0:1723:U:C6	2.55	0.41
1:0:2057:U:H2'	1:0:2058:U:H6	1.86	0.41
1:0:2076:G:H2'	1:0:2077:G:C8	2.54	0.41
1:0:2217:G:H4'	1:0:2219:U:C5	2.56	0.41
1:0:2487:G:H4'	1:0:2533:U:O2'	2.20	0.41
1:0:488:A:H2'	1:0:489:A:C8	2.55	0.41
1:0:513:A:C4'	1:0:515:A:H5'	2.48	0.41
1:0:925:U:H5''	1:0:926:C:OP1	2.20	0.41
1:0:1189:G:O2'	1:0:1190:C:H5'	2.21	0.41
1:0:1365:U:H5'	1:0:1587:A:H1'	2.03	0.41
1:0:2096:U:C2'	1:0:2097:A:H5''	2.44	0.41
1:0:2321:C:H2'	1:0:2322:U:H5'	2.02	0.41
1:0:2515:G:H2'	1:0:2516:U:C6	2.55	0.41
1:0:1140:A:H2	1:0:2548:G:HO2'	1.67	0.41
1:0:1656:U:O2'	1:0:2678:C:H4'	2.21	0.41
1:0:2698:G:H2'	1:0:2699:G:O4'	2.20	0.41
1:0:2740:C:O2'	1:0:2741:G:H5'	2.20	0.41
1:0:2871:U:H2'	1:0:2872:U:H6	1.85	0.41
1:0:28:A:H2'	1:0:29:U:C6	2.55	0.41

Continued on next page...

Continued from previous page...

Atom-1	Atom-2	Interatomic distance (Å)	Clash overlap (Å)
1:0:317:U:H3'	1:0:318:G:C5'	2.51	0.41
1:0:628:A:H2'	1:0:629:C:H6	1.82	0.41
1:0:669:G:H2'	1:0:670:U:H6	1.84	0.41
1:0:798:G:OP2	1:0:805:G:N7	2.53	0.41
1:0:1464:A:H4'	1:0:1545:G:C4'	2.51	0.41
1:0:2015:G:OP2	1:0:2434:G:H5'	2.21	0.41
1:0:2056:C:H2'	1:0:2057:U:C6	2.56	0.41
1:0:2058:U:H3'	1:0:2217:G:N1	2.36	0.41
1:0:2245:A:O2'	1:0:2246:A:P	2.79	0.41
1:0:964:A:H1'	1:0:2245:A:OP2	2.20	0.41
1:0:2378:G:H2'	1:0:2379:G:C8	2.55	0.41
1:0:2586:G:H2'	1:0:2587:G:O4'	2.21	0.41
1:0:2780:A:H2'	1:0:2781:G:C8	2.56	0.41
1:0:2795:A:N3	1:0:2795:A:C2'	2.83	0.41
1:0:474:G:N2	1:0:476:G:H3'	2.36	0.41
1:0:639:G:O2'	1:0:640:C:H5'	2.21	0.41
1:0:67:G:C4	1:0:73:A:C8	3.08	0.41
1:0:690:A:O2'	1:0:691:C:H5'	2.21	0.41
1:0:964:A:H2'	1:0:965:G:H8	1.85	0.41
1:0:139:A:H2'	1:0:140:G:C8	2.55	0.41
1:0:1415:C:O2'	1:0:1416:A:H5'	2.21	0.41
1:0:1787:U:H2'	1:0:1788:C:C6	2.56	0.41
1:0:1900:U:H2'	1:0:1901:A:H5'	2.03	0.41
1:0:2083:G:N2	1:0:2172:U:H3	2.18	0.41
1:0:2226:A:H2'	1:0:2227:C:H6	1.86	0.41
1:0:873:U:C2	1:0:2246:A:H5''	2.55	0.41
1:0:2467:A:H2'	1:0:2468:G:C8	2.55	0.41
1:0:2597:G:H2'	1:0:2598:C:C6	2.56	0.41
1:0:307:C:H2'	1:0:308:C:H6	1.86	0.41
1:0:314:G:H2'	1:0:315:G:H8	1.86	0.41
1:0:688:A:H1'	1:0:2422:C:O2'	2.21	0.41
1:0:808:C:H2'	1:0:809:C:C6	2.56	0.41
1:0:82:G:O2'	1:0:83:A:H5'	2.21	0.41
1:0:857:U:C2'	1:0:858:G:H5'	2.50	0.41
1:0:874:A:H2'	1:0:875:G:H5'	2.03	0.41
1:0:1221:C:H2'	1:0:1222:G:H8	1.85	0.41
1:0:1676:U:H2'	1:0:1677:C:C6	2.56	0.41
1:0:1944:C:H2'	1:0:1945:C:O4'	2.21	0.41
1:0:1985:G:H2'	1:0:1986:G:C8	2.56	0.41
1:0:2059:U:H5	1:0:2575:U:N3	2.08	0.41
1:0:2200:G:H2'	1:0:2201:G:C8	2.56	0.41

Continued on next page...

Continued from previous page...

Atom-1	Atom-2	Interatomic distance (Å)	Clash overlap (Å)
1:0:2326:C:H2'	1:0:2327:U:C6	2.56	0.41
1:0:2390:A:H2'	1:0:2391:A:C8	2.56	0.41
1:0:2564:U:C4'	1:0:2565:C:H5'	2.50	0.41
1:0:2651:U:H2'	1:0:2652:G:H8	1.86	0.41
1:0:2758:A:H5''	1:0:2759:U:C5	2.55	0.41
1:0:2811:G:H2'	1:0:2812:A:C8	2.56	0.41
1:0:2824:C:HO2'	1:0:2825:A:P	2.43	0.41
1:0:853:C:H2'	1:0:854:G:C8	2.56	0.41
1:0:978:U:H2'	1:0:979:A:C8	2.55	0.41
1:0:1098:G:H21	1:0:1100:G:H4'	1.86	0.41
1:0:1313:U:O2'	1:0:1314:A:OP2	2.39	0.41
1:0:1621:C:C4'	1:0:1626:A:H61	2.31	0.41
1:0:1685:A:O2'	1:0:1686:A:O5'	2.39	0.41
1:0:1887:G:O2'	1:0:1888:C:H5'	2.21	0.41
1:0:2312:A:H1'	1:0:2314:A:N9	2.35	0.41
1:0:2383:C:H2'	1:0:2384:G:O4'	2.20	0.41
1:0:1084:A:H4'	1:0:2454:C:OP1	2.20	0.41
1:0:2555:G:C2'	1:0:2555:G:N3	2.83	0.41
1:0:40:U:H2'	1:0:41:G:H8	1.86	0.41
1:0:769:C:H2'	1:0:770:U:O4'	2.20	0.41
1:0:868:U:H2'	1:0:869:C:H6	1.85	0.41
1:0:1242:A:H2'	1:0:1243:G:C8	2.55	0.41
1:0:1302:C:H2'	1:0:1303:U:C6	2.56	0.41
1:0:1337:G:H1'	1:0:1632:A:C6	2.56	0.41
1:0:1586:A:H2'	1:0:1587:A:H8	1.86	0.41
1:0:2134:U:H2'	1:0:2135:C:C6	2.56	0.41
1:0:218:A:H1'	1:0:220:U:C4	2.56	0.41
1:0:229:G:H2'	1:0:230:C:C6	2.56	0.41
1:0:689:A:H8	1:0:2422:C:H1'	1.85	0.41
1:0:314:G:H2'	1:0:315:G:C8	2.55	0.41
1:0:691:C:H2'	1:0:692:C:C6	2.56	0.41
1:0:729:A:O2'	1:0:730:C:H5'	2.21	0.41
1:0:6:A:H2'	1:0:7:G:C8	2.56	0.41
1:0:1398:G:H2'	1:0:1399:C:C6	2.56	0.40
1:0:1528:C:H3'	1:0:1529:C:H5''	2.03	0.40
1:0:1532:A:H2'	1:0:1533:G:H8	1.86	0.40
1:0:1594:U:H2'	1:0:1595:A:H8	1.86	0.40
1:0:1617:G:H2'	1:0:1618:U:H5'	2.03	0.40
1:0:185:C:H2'	1:0:186:C:C6	2.56	0.40
1:0:1888:C:H4'	1:0:1889:G:H5''	2.02	0.40
1:0:540:G:O6	1:0:2006:G:OP1	2.40	0.40

Continued on next page...

Continued from previous page...

Atom-1	Atom-2	Interatomic distance (Å)	Clash overlap (Å)
1:0:2048:C:H2'	1:0:2049:C:H6	1.86	0.40
1:0:2241:U:H4'	1:0:2307:A:C2	2.56	0.40
1:0:1142:G:OP1	1:0:2494:C:H4'	2.21	0.40
1:0:2824:C:C2'	1:0:2825:A:OP2	2.70	0.40
1:0:305:A:H2'	1:0:306:G:O4'	2.21	0.40
1:0:432:C:H2'	1:0:433:G:C8	2.57	0.40
1:0:27:G:N2	1:0:522:G:HO2'	2.19	0.40
1:0:713:G:H2'	1:0:714:G:C8	2.56	0.40
1:0:1446:U:H2'	1:0:1447:U:C6	2.55	0.40
1:0:1539:U:H2'	1:0:1540:C:C6	2.56	0.40
1:0:2383:C:C2'	1:0:2384:G:H5'	2.51	0.40
1:0:2389:G:H2'	1:0:2390:A:O4'	2.21	0.40
1:0:838:A:H4'	1:0:2407:G:C6	2.57	0.40
1:0:2432:A:H4'	1:0:2551:A:O2'	2.21	0.40
1:0:2432:A:O2'	1:0:2433:G:H5'	2.20	0.40
1:0:2500:C:H4'	1:0:2544:A:O4'	2.21	0.40
1:0:2506:C:H2'	1:0:2507:U:C6	2.56	0.40
1:0:477:A:H2'	1:0:478:G:H5'	2.02	0.40
1:0:550:C:H2'	1:0:551:A:H8	1.86	0.40
1:0:758:G:H2'	1:0:761:G:N3	2.36	0.40
1:0:856:A:H2'	1:0:857:U:O4'	2.20	0.40
1:0:930:A:H5'	1:0:931:G:N7	2.37	0.40
1:0:1040:A:C2'	1:0:1041:G:H5'	2.51	0.40
1:0:1147:G:H2'	1:0:1148:G:H8	1.86	0.40
1:0:1204:G:H2'	1:0:1205:G:H8	1.86	0.40
1:0:1625:A:C4	1:0:1632:A:H1'	2.56	0.40
1:0:2038:C:H5'	1:0:2039:G:C5'	2.51	0.40
1:0:334:G:N3	1:0:344:G:H1'	2.37	0.40
1:0:528:G:H2'	1:0:529:U:C6	2.57	0.40
1:0:854:G:H2'	1:0:855:G:C8	2.57	0.40
1:0:931:G:H2'	1:0:932:G:O4'	2.21	0.40
1:0:1162:A:H2'	1:0:1163:C:H6	1.86	0.40
1:0:1187:A:O2'	1:0:1188:A:P	2.79	0.40
1:0:1370:U:H2'	1:0:1371:G:O4'	2.22	0.40
1:0:1381:G:O2'	1:0:1382:G:H5'	2.21	0.40
1:0:1443:G:N3	1:0:1584:G:N1	2.69	0.40
1:0:1336:G:N2	1:0:1632:A:N6	2.69	0.40
1:0:1686:A:C2'	1:0:1687:C:H5'	2.51	0.40
1:0:1696:C:H42	1:0:1755:G:H5''	1.87	0.40
1:0:1850:G:H2'	1:0:1851:A:C8	2.56	0.40
1:0:2234:G:H2'	1:0:2235:G:O4'	2.22	0.40

Continued on next page...

Continued from previous page...

Atom-1	Atom-2	Interatomic distance (Å)	Clash overlap (Å)
1:0:2378:G:O2'	1:0:2379:G:H5'	2.22	0.40
1:0:2502:G:H2'	1:0:2503:G:C8	2.56	0.40
1:0:2539:C:H2'	1:0:2540:A:C8	2.56	0.40
1:0:344:G:O2'	1:0:345:U:H5'	2.21	0.40
1:0:744:C:H2'	1:0:745:C:C6	2.56	0.40
1:0:105:G:O2'	1:0:106:G:H5'	2.21	0.40
1:0:1194:U:O2'	1:0:1195:U:O5'	2.40	0.40
1:0:1244:U:H2'	1:0:1245:G:C8	2.57	0.40
1:0:1418:C:H2'	1:0:1419:G:C8	2.55	0.40
1:0:143:A:H2'	1:0:144:U:O4'	2.22	0.40
1:0:1547:U:H2'	1:0:1548:U:C6	2.56	0.40
1:0:1671:A:H1'	1:0:2798:A:H5'	2.03	0.40
1:0:2081:U:H2'	1:0:2082:C:C5'	2.43	0.40
1:0:2217:G:H2'	1:0:2217:G:N3	2.36	0.40
1:0:2365:U:O2'	1:0:2366:U:H5'	2.22	0.40
1:0:2467:A:H2'	1:0:2468:G:H8	1.86	0.40
1:0:334:G:N2	1:0:344:G:N3	2.70	0.40
1:0:890:U:H2'	1:0:891:A:C8	2.57	0.40
1:0:953:G:H2'	1:0:954:U:O4'	2.21	0.40

There are no symmetry-related clashes.

5.3 Torsion angles [i](#)

5.3.1 Protein backbone [i](#)

There are no protein molecules in this entry.

5.3.2 Protein sidechains [i](#)

There are no protein molecules in this entry.

5.3.3 RNA [i](#)

Mol	Chain	Analysed	Backbone Outliers	Pucker Outliers
1	0	2757/2880 (95%)	411 (14%)	0
2	5	2/4 (50%)	2 (100%)	0
All	All	2759/2884 (95%)	413 (14%)	0

All (413) RNA backbone outliers are listed below:

Mol	Chain	Res	Type
1	0	15	G
1	0	35	G
1	0	45	C
1	0	48	A
1	0	49	U
1	0	50	G
1	0	59	G
1	0	67	G
1	0	70	A
1	0	71	A
1	0	72	A
1	0	87	G
1	0	89	A
1	0	90	G
1	0	91	A
1	0	99	U
1	0	105	G
1	0	110	U
1	0	116	A
1	0	118	U
1	0	123	A
1	0	129	A
1	0	135	U
1	0	155	G
1	0	158	A
1	0	173	A
1	0	174	A
1	0	176	A
1	0	177	U
1	0	181	A
1	0	182	G
1	0	193	A
1	0	199	A
1	0	200	A
1	0	205	A
1	0	206	U
1	0	210	A
1	0	218	A
1	0	219	G
1	0	225	G
1	0	226	C
1	0	227	G

Continued on next page...

Continued from previous page...

Mol	Chain	Res	Type
1	0	229	G
1	0	242	A
1	0	243	G
1	0	245	C
1	0	305	A
1	0	318	G
1	0	333	A
1	0	334	G
1	0	335	A
1	0	340	G
1	0	342	G
1	0	343	A
1	0	358	C
1	0	363	G
1	0	368	A
1	0	373	A
1	0	399	G
1	0	401	G
1	0	408	U
1	0	414	A
1	0	418	C
1	0	424	G
1	0	443	A
1	0	455	A
1	0	456	C
1	0	460	U
1	0	461	A
1	0	463	C
1	0	467	U
1	0	469	G
1	0	491	A
1	0	492	G
1	0	515	A
1	0	518	A
1	0	519	C
1	0	537	C
1	0	539	A
1	0	541	C
1	0	542	A
1	0	554	U
1	0	556	A
1	0	558	G

Continued on next page...

Continued from previous page...

Mol	Chain	Res	Type
1	0	559	C
1	0	572	G
1	0	584	A
1	0	602	C
1	0	613	A
1	0	617	U
1	0	624	A
1	0	632	A
1	0	636	G
1	0	638	A
1	0	648	A
1	0	652	C
1	0	654	A
1	0	657	A
1	0	665	A
1	0	666	U
1	0	667	U
1	0	684	C
1	0	697	G
1	0	699	G
1	0	700	C
1	0	728	G
1	0	742	G
1	0	743	A
1	0	760	U
1	0	761	G
1	0	776	G
1	0	778	G
1	0	789	G
1	0	794	A
1	0	796	A
1	0	797	A
1	0	798	G
1	0	803	C
1	0	806	A
1	0	813	A
1	0	818	G
1	0	825	C
1	0	832	A
1	0	840	U
1	0	841	G
1	0	844	G

Continued on next page...

Continued from previous page...

Mol	Chain	Res	Type
1	0	860	U
1	0	873	U
1	0	879	A
1	0	919	U
1	0	922	A
1	0	926	C
1	0	930	A
1	0	931	G
1	0	941	U
1	0	944	A
1	0	952	A
1	0	957	G
1	0	969	U
1	0	970	A
1	0	972	C
1	0	973	U
1	0	984	A
1	0	994	A
1	0	996	C
1	0	1005	U
1	0	1006	C
1	0	1023	U
1	0	1024	G
1	0	1030	U
1	0	1032	A
1	0	1033	G
1	0	1036	G
1	0	1037	U
1	0	1044	U
1	0	1055	A
1	0	1056	U
1	0	1057	A
1	0	1067	G
1	0	1073	G
1	0	1074	G
1	0	1075	C
1	0	1081	A
1	0	1087	C
1	0	1090	C
1	0	1099	A
1	0	1122	A
1	0	1137	A

Continued on next page...

Continued from previous page...

Mol	Chain	Res	Type
1	0	1138	A
1	0	1142	G
1	0	1145	C
1	0	1146	G
1	0	1155	G
1	0	1167	A
1	0	1182	U
1	0	1183	C
1	0	1185	C
1	0	1188	A
1	0	1194	U
1	0	1195	U
1	0	1199	U
1	0	1200	G
1	0	1224	A
1	0	1253	C
1	0	1262	U
1	0	1264	C
1	0	1266	G
1	0	1269	G
1	0	1278	A
1	0	1279	G
1	0	1280	U
1	0	1284	G
1	0	1285	A
1	0	1288	A
1	0	1314	A
1	0	1324	G
1	0	1334	A
1	0	1338	G
1	0	1342	U
1	0	1343	C
1	0	1355	A
1	0	1356	G
1	0	1359	G
1	0	1391	A
1	0	1392	U
1	0	1397	A
1	0	1398	G
1	0	1433	A
1	0	1441	A
1	0	1442	C

Continued on next page...

Continued from previous page...

Mol	Chain	Res	Type
1	0	1443	G
1	0	1459	U
1	0	1465	G
1	0	1468	A
1	0	1469	U
1	0	1470	G
1	0	1475	U
1	0	1482	U
1	0	1490	U
1	0	1496	G
1	0	1505	U
1	0	1508	G
1	0	1509	A
1	0	1513	U
1	0	1519	G
1	0	1524	C
1	0	1529	C
1	0	1552	C
1	0	1571	G
1	0	1573	G
1	0	1574	A
1	0	1576	G
1	0	1582	A
1	0	1583	A
1	0	1585	A
1	0	1618	U
1	0	1623	C
1	0	1624	A
1	0	1625	A
1	0	1632	A
1	0	1633	C
1	0	1634	A
1	0	1635	G
1	0	1648	C
1	0	1651	U
1	0	1657	A
1	0	1664	G
1	0	1665	C
1	0	1670	G
1	0	1671	A
1	0	1680	U
1	0	1685	A

Continued on next page...

Continued from previous page...

Mol	Chain	Res	Type
1	0	1691	G
1	0	1692	C
1	0	1710	U
1	0	1712	G
1	0	1715	A
1	0	1717	A
1	0	1724	C
1	0	1733	U
1	0	1748	U
1	0	1749	G
1	0	1750	A
1	0	1754	G
1	0	1755	G
1	0	1764	A
1	0	1771	A
1	0	1778	U
1	0	1800	A
1	0	1801	C
1	0	1802	A
1	0	1807	A
1	0	1808	C
1	0	1821	A
1	0	1831	G
1	0	1884	A
1	0	1889	G
1	0	1920	A
1	0	1922	U
1	0	1926	U
1	0	1938	U
1	0	1939	U
1	0	1946	U
1	0	1949	A
1	0	1950	C
1	0	1954	A
1	0	1955	G
1	0	1956	G
1	0	1979	C
1	0	1980	A
1	0	2004	U
1	0	2006	G
1	0	2015	G
1	0	2016	A

Continued on next page...

Continued from previous page...

Mol	Chain	Res	Type
1	0	2019	C
1	0	2038	C
1	0	2043	A
1	0	2051	U
1	0	2052	G
1	0	2060	A
1	0	2076	G
1	0	2082	C
1	0	2094	C
1	0	2096	U
1	0	2118	A
1	0	2119	A
1	0	2140	G
1	0	2162	C
1	0	2168	A
1	0	2181	A
1	0	2191	A
1	0	2195	C
1	0	2199	C
1	0	2205	C
1	0	2218	G
1	0	2229	G
1	0	2237	C
1	0	2241	U
1	0	2245	A
1	0	2246	A
1	0	2247	A
1	0	2255	G
1	0	2262	C
1	0	2268	G
1	0	2285	U
1	0	2286	G
1	0	2287	G
1	0	2288	A
1	0	2298	U
1	0	2299	A
1	0	2300	G
1	0	2301	A
1	0	2313	G
1	0	2315	A
1	0	2316	G
1	0	2326	C

Continued on next page...

Continued from previous page...

Mol	Chain	Res	Type
1	0	2362	G
1	0	2364	C
1	0	2378	G
1	0	2382	C
1	0	2385	U
1	0	2396	C
1	0	2403	C
1	0	2405	A
1	0	2409	A
1	0	2414	A
1	0	2420	C
1	0	2427	A
1	0	2428	U
1	0	2438	A
1	0	2448	A
1	0	2455	A
1	0	2470	U
1	0	2481	G
1	0	2482	A
1	0	2483	U
1	0	2484	G
1	0	2485	U
1	0	2492	G
1	0	2498	U
1	0	2499	C
1	0	2504	G
1	0	2522	G
1	0	2546	G
1	0	2549	G
1	0	2553	G
1	0	2565	C
1	0	2578	G
1	0	2581	A
1	0	2582	G
1	0	2588	U
1	0	2589	C
1	0	2591	C
1	0	2593	A
1	0	2594	U
1	0	2608	A
1	0	2609	G
1	0	2625	U

Continued on next page...

Continued from previous page...

Mol	Chain	Res	Type
1	0	2633	A
1	0	2634	G
1	0	2661	G
1	0	2669	C
1	0	2670	C
1	0	2681	A
1	0	2691	C
1	0	2692	A
1	0	2712	G
1	0	2728	A
1	0	2730	A
1	0	2732	C
1	0	2737	A
1	0	2745	A
1	0	2756	A
1	0	2760	G
1	0	2761	A
1	0	2770	A
1	0	2771	C
1	0	2783	U
1	0	2785	A
1	0	2795	A
1	0	2807	U
1	0	2808	U
1	0	2809	A
1	0	2811	G
1	0	2825	A
1	0	2841	U
1	0	2842	C
1	0	2847	G
1	0	2854	G
1	0	2855	C
1	0	2859	U
2	5	33	C
2	5	34	C

There are no RNA pucker outliers to report.

5.4 Non-standard residues in protein, DNA, RNA chains ⓘ

1 non-standard protein/DNA/RNA residue is modelled in this entry.

In the following table, the Counts columns list the number of bonds (or angles) for which Mogul

statistics could be retrieved, the number of bonds (or angles) that are observed in the model and the number of bonds (or angles) that are defined in the chemical component dictionary. The Link column lists molecule types, if any, to which the group is linked. The Z score for a bond length (or angle) is the number of standard deviations the observed value is removed from the expected value. A bond length (or angle) with $|Z| > 2$ is considered an outlier worth inspection. RMSZ is the root-mean-square of all Z scores of the bond lengths (or angles).

Mol	Type	Chain	Res	Link	Bond lengths			Bond angles		
					Counts	RMSZ	# $ Z > 2$	Counts	RMSZ	# $ Z > 2$
2	PPU	5	35	2	31,40,41	2.71	5 (16%)	34,57,60	1.15	4 (11%)

In the following table, the Chirals column lists the number of chiral outliers, the number of chiral centers analysed, the number of these observed in the model and the number defined in the chemical component dictionary. Similar counts are reported in the Torsion and Rings columns. '-' means no outliers of that kind were identified.

Mol	Type	Chain	Res	Link	Chirals	Torsions	Rings
2	PPU	5	35	2	-	0/21/43/44	0/4/4/4

All (5) bond length outliers are listed below:

Mol	Chain	Res	Type	Atoms	Z	Observed(Å)	Ideal(Å)
2	5	35	PPU	OC-CM	-5.00	1.27	1.42
2	5	35	PPU	CE2-CZ	2.59	1.44	1.38
2	5	35	PPU	CD2-CG	2.74	1.44	1.38
2	5	35	PPU	CE1-CZ	3.64	1.46	1.38
2	5	35	PPU	C-N3'	12.17	1.61	1.34

All (4) bond angle outliers are listed below:

Mol	Chain	Res	Type	Atoms	Z	Observed(°)	Ideal(°)
2	5	35	PPU	C-CA-N	2.16	117.83	109.10
2	5	35	PPU	C9-N6-C6	2.24	126.28	119.51
2	5	35	PPU	CM-OC-CZ	2.97	123.99	117.50
2	5	35	PPU	C2-N1-C6	3.31	119.95	111.82

There are no chirality outliers.

There are no torsion outliers.

There are no ring outliers.

No monomer is involved in short contacts.

5.5 Carbohydrates [i](#)

There are no carbohydrates in this entry.

5.6 Ligand geometry [i](#)

There are no ligands in this entry.

5.7 Other polymers [i](#)

There are no such residues in this entry.

5.8 Polymer linkage issues [i](#)

There are no chain breaks in this entry.

6 Fit of model and data

6.1 Protein, DNA and RNA chains

EDS was not executed - this section is therefore empty.

6.2 Non-standard residues in protein, DNA, RNA chains

EDS was not executed - this section is therefore empty.

6.3 Carbohydrates

EDS was not executed - this section is therefore empty.

6.4 Ligands

EDS was not executed - this section is therefore empty.

6.5 Other polymers

EDS was not executed - this section is therefore empty.