



# Full wwPDB X-ray Structure Validation Report ⓘ

Oct 31, 2017 – 02:35 AM EDT

PDB ID : 3NJQ  
Title : Crystal structure of Kaposi's sarcoma-associated herpesvirus protease in complex with dimer disruptor  
Authors : Baharuddin, A.  
Deposited on : unknown  
Resolution : 2.00 Å(reported)

This is a Full wwPDB X-ray Structure Validation Report for a publicly released PDB entry.

We welcome your comments at [validation@mail.wwpdb.org](mailto:validation@mail.wwpdb.org)

A user guide is available at

<http://wwpdb.org/validation/2016/XrayValidationReportHelp>

with specific help available everywhere you see the ⓘ symbol.

---

The following versions of software and data (see [references ⓘ](#)) were used in the production of this report:

MolProbity : 4.02b-467  
Mogul : 1.7.2 (RC1), CSD as538be (2017)  
Xtriage (Phenix) : 1.9-1692  
EDS : rb-20030345  
Percentile statistics : 20161228.v01 (using entries in the PDB archive December 28th 2016)  
Refmac : 5.8.0135  
CCP4 : 6.5.0  
Ideal geometry (proteins) : Engh & Huber (2001)  
Ideal geometry (DNA, RNA) : Parkinson et al. (1996)  
Validation Pipeline (wwPDB-VP) : rb-20030345

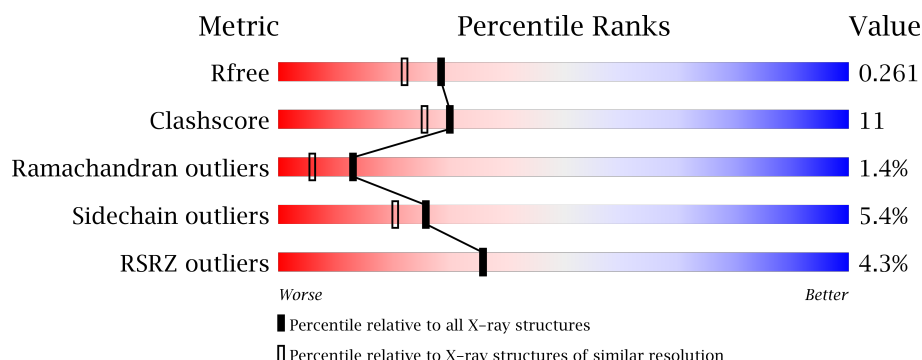
# 1 Overall quality at a glance ⓘ

The following experimental techniques were used to determine the structure:

## *X-RAY DIFFRACTION*

The reported resolution of this entry is 2.00 Å.

Percentile scores (ranging between 0-100) for global validation metrics of the entry are shown in the following graphic. The table shows the number of entries on which the scores are based.



Metric	Whole archive (#Entries)	Similar resolution (#Entries, resolution range(Å))
$R_{free}$	100719	6609 (2.00-2.00)
Clashscore	112137	7775 (2.00-2.00)
Ramachandran outliers	110173	7679 (2.00-2.00)
Sidechain outliers	110143	7678 (2.00-2.00)
RSRZ outliers	101464	6696 (2.00-2.00)

The table below summarises the geometric issues observed across the polymeric chains and their fit to the electron density. The red, orange, yellow and green segments on the lower bar indicate the fraction of residues that contain outliers for  $\geq 3$ , 2, 1 and 0 types of geometric quality criteria. A grey segment represents the fraction of residues that are not modelled. The numeric value for each fraction is indicated below the corresponding segment, with a dot representing fractions  $\leq 5\%$ . The upper red bar (where present) indicates the fraction of residues that have poor fit to the electron density. The numeric value is given above the bar.

Mol	Chain	Length	Quality of chain
1	A	193	<div> <div>6%</div> <div> <div></div> <div>78%</div> <div>20%</div> <div>..</div> </div> </div>
2	B	193	<div> <div>3%</div> <div> <div></div> <div>73%</div> <div>21%</div> <div>...</div> </div> </div>

The following table lists non-polymeric compounds, carbohydrate monomers and non-standard residues in protein, DNA, RNA chains that are outliers for geometric or electron-density-fit criteria:

Mol	Type	Chain	Res	Chirality	Geometry	Clashes	Electron density
3	ACT	A	1	-	-	-	X
5	SO4	B	2	-	-	-	X

## 2 Entry composition [i](#)

There are 7 unique types of molecules in this entry. The entry contains 3186 atoms, of which 0 are hydrogens and 0 are deuteriums.

In the tables below, the ZeroOcc column contains the number of atoms modelled with zero occupancy, the AltConf column contains the number of residues with at least one atom in alternate conformation and the Trace column contains the number of residues modelled with at most 2 atoms.

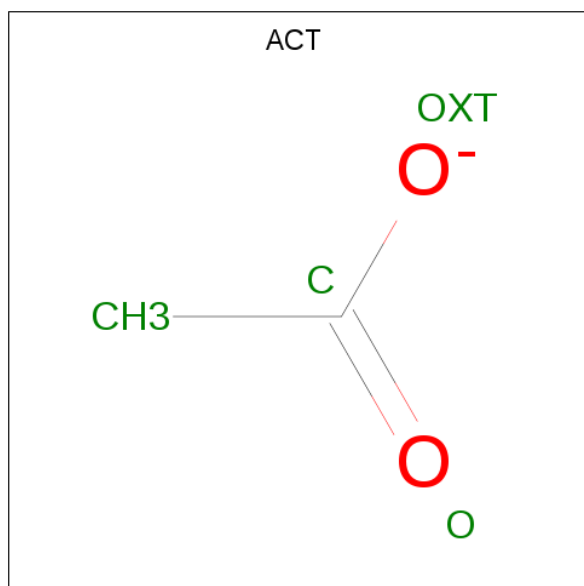
- Molecule 1 is a protein called ORF 17.

Mol	Chain	Residues	Atoms					ZeroOcc	AltConf	Trace
1	A	190	Total	C	N	O	S	0	3	0
			1484	954	250	276	4			

- Molecule 2 is a protein called ORF 17.

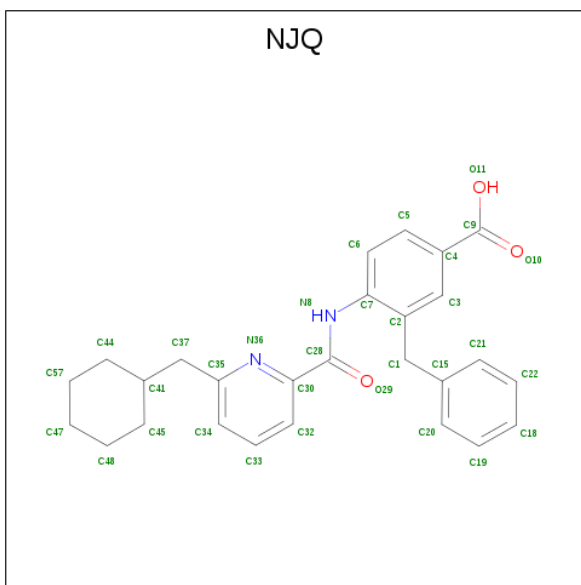
Mol	Chain	Residues	Atoms					ZeroOcc	AltConf	Trace
2	B	189	Total	C	N	O	S	0	1	0
			1469	941	248	276	4			

- Molecule 3 is ACETATE ION (three-letter code: ACT) (formula: C<sub>2</sub>H<sub>3</sub>O<sub>2</sub>).



Mol	Chain	Residues	Atoms			ZeroOcc	AltConf
3	A	1	Total	C	O	0	0
			4	2	2		

- Molecule 4 is 3-benzyl-4-({[6-(cyclohexylmethyl)pyridin-2-yl]carbonyl}amino)benzoic acid (three-letter code: NJQ) (formula: C<sub>27</sub>H<sub>28</sub>N<sub>2</sub>O<sub>3</sub>).



Mol	Chain	Residues	Atoms				ZeroOcc	AltConf
4	A	1	Total	C	N	O	0	0
			32	27	2	3		
4	B	1	Total	C	N	O	0	0
			32	27	2	3		
4	B	1	Total	C	N	O	0	0
			32	27	2	3		

- Molecule 5 is SULFATE ION (three-letter code: SO4) (formula: O<sub>4</sub>S).



Mol	Chain	Residues	Atoms			ZeroOcc	AltConf
5	B	1	Total	O	S	0	0
			5	4	1		

*Continued on next page...*

Continued from previous page...

Mol	Chain	Residues	Atoms			ZeroOcc	AltConf
5	B	1	Total	O	S	0	0
			5	4	1		
5	B	1	Total	O	S	0	1
			10	8	2		

- Molecule 6 is GLYCEROL (three-letter code: GOL) (formula:  $C_3H_8O_3$ ).



Mol	Chain	Residues	Atoms			ZeroOcc	AltConf
6	B	1	Total	C	O	0	0
			6	3	3		

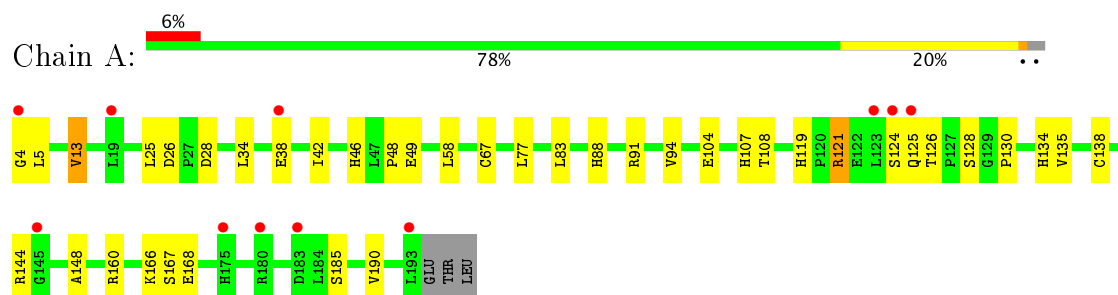
- Molecule 7 is water.

Mol	Chain	Residues	Atoms		ZeroOcc	AltConf
7	A	44	Total	O	0	0
			44	44		
7	B	63	Total	O	0	0
			63	63		

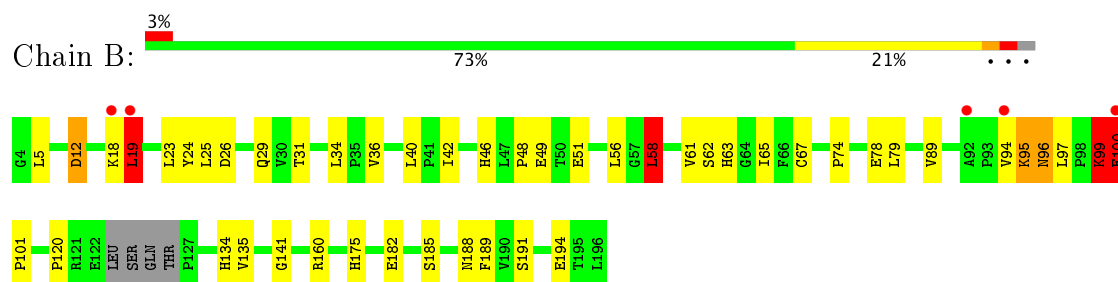
### 3 Residue-property plots [i](#)

These plots are drawn for all protein, RNA and DNA chains in the entry. The first graphic for a chain summarises the proportions of the various outlier classes displayed in the second graphic. The second graphic shows the sequence view annotated by issues in geometry and electron density. Residues are color-coded according to the number of geometric quality criteria for which they contain at least one outlier: green = 0, yellow = 1, orange = 2 and red = 3 or more. A red dot above a residue indicates a poor fit to the electron density ( $\text{RSRZ} > 2$ ). Stretches of 2 or more consecutive residues without any outlier are shown as a green connector. Residues present in the sample, but not in the model, are shown in grey.

#### • Molecule 1: ORF 17



#### • Molecule 2: ORF 17



## 4 Data and refinement statistics

Property	Value	Source
Space group	I 2 2 2	Depositor
Cell constants a, b, c, $\alpha$ , $\beta$ , $\gamma$	69.32Å 95.99Å 119.24Å 90.00° 90.00° 90.00°	Depositor
Resolution (Å)	48.00 – 2.00 48.00 – 2.00	Depositor EDS
% Data completeness (in resolution range)	99.9 (48.00-2.00) 99.9 (48.00-2.00)	Depositor EDS
$R_{merge}$	0.06	Depositor
$R_{sym}$	(Not available)	Depositor
$\langle I/\sigma(I) \rangle$ <sup>1</sup>	2.96 (at 2.00Å)	Xtriage
Refinement program	REFMAC 5.5.0109	Depositor
R, $R_{free}$	0.203 , 0.248 0.215 , 0.261	Depositor DCC
$R_{free}$ test set	1366 reflections (5.28%)	DCC
Wilson B-factor (Å <sup>2</sup> )	34.9	Xtriage
Anisotropy	0.120	Xtriage
Bulk solvent $k_{sol}$ (e/Å <sup>3</sup> ), $B_{sol}$ (Å <sup>2</sup> )	0.36 , 46.3	EDS
L-test for twinning <sup>2</sup>	$\langle  L  \rangle = 0.50$ , $\langle L^2 \rangle = 0.33$	Xtriage
Estimated twinning fraction	No twinning to report.	Xtriage
$F_o, F_c$ correlation	0.96	EDS
Total number of atoms	3186	wwPDB-VP
Average B, all atoms (Å <sup>2</sup> )	45.0	wwPDB-VP

Xtriage's analysis on translational NCS is as follows: *The largest off-origin peak in the Patterson function is 4.94% of the height of the origin peak. No significant pseudotranslation is detected.*

<sup>1</sup>Intensities estimated from amplitudes.

<sup>2</sup>Theoretical values of  $\langle |L| \rangle$ ,  $\langle L^2 \rangle$  for acentric reflections are 0.5, 0.333 respectively for untwinned datasets, and 0.375, 0.2 for perfectly twinned datasets.



## 5 Model quality

### 5.1 Standard geometry

Bond lengths and bond angles in the following residue types are not validated in this section: GOL, CSO, ACT, NJQ, SO4

The Z score for a bond length (or angle) is the number of standard deviations the observed value is removed from the expected value. A bond length (or angle) with  $|Z| > 5$  is considered an outlier worth inspection. RMSZ is the root-mean-square of all Z scores of the bond lengths (or angles).

Mol	Chain	Bond lengths		Bond angles	
		RMSZ	$\# Z  > 5$	RMSZ	$\# Z  > 5$
1	A	0.90	3/1525 (0.2%)	0.85	1/2085 (0.0%)
2	B	0.91	0/1496	0.94	3/2042 (0.1%)
All	All	0.90	3/3021 (0.1%)	0.89	4/4127 (0.1%)

Chiral center outliers are detected by calculating the chiral volume of a chiral center and verifying if the center is modelled as a planar moiety or with the opposite hand. A planarity outlier is detected by checking planarity of atoms in a peptide group, atoms in a mainchain group or atoms of a sidechain that are expected to be planar.

Mol	Chain	#Chirality outliers	#Planarity outliers
1	A	0	1
2	B	0	1
All	All	0	2

All (3) bond length outliers are listed below:

Mol	Chain	Res	Type	Atoms	Z	Observed(Å)	Ideal(Å)
1	A	168	GLU	CD-OE2	10.19	1.36	1.25
1	A	138	CYS	CB-SG	6.85	1.94	1.82
1	A	166	LYS	CD-CE	5.32	1.64	1.51

All (4) bond angle outliers are listed below:

Mol	Chain	Res	Type	Atoms	Z	Observed(°)	Ideal(°)
1	A	91	ARG	NE-CZ-NH2	-9.42	115.59	120.30
2	B	58	LEU	CA-CB-CG	7.50	132.55	115.30
2	B	12	ASP	CB-CG-OD1	-5.36	113.47	118.30
2	B	100	GLU	N-CA-C	5.13	124.84	111.00

There are no chirality outliers.

All (2) planarity outliers are listed below:

Mol	Chain	Res	Type	Group
1	A	144	ARG	Peptide
2	B	99	LYS	Peptide

## 5.2 Too-close contacts

In the following table, the Non-H and H(model) columns list the number of non-hydrogen atoms and hydrogen atoms in the chain respectively. The H(added) column lists the number of hydrogen atoms added and optimized by MolProbity. The Clashes column lists the number of clashes within the asymmetric unit, whereas Symm-Clashes lists symmetry related clashes.

Mol	Chain	Non-H	H(model)	H(added)	Clashes	Symm-Clashes
1	A	1484	0	1488	25	0
2	B	1469	0	1459	43	0
3	A	4	0	3	0	0
4	A	32	0	27	0	0
4	B	64	0	54	1	0
5	B	20	0	0	1	0
6	B	6	0	7	2	0
7	A	44	0	0	5	0
7	B	63	0	0	10	0
All	All	3186	0	3038	65	0

The all-atom clashscore is defined as the number of clashes found per 1000 atoms (including hydrogen atoms). The all-atom clashscore for this structure is 11.

All (65) close contacts within the same asymmetric unit are listed below, sorted by their clash magnitude.

Atom-1	Atom-2	Interatomic distance (Å)	Clash overlap (Å)
2:B:46:HIS:HD2	2:B:134:HIS:HE1	0.99	0.93
2:B:46:HIS:CD2	2:B:134:HIS:HE1	1.87	0.93
2:B:100:GLU:HG2	2:B:100:GLU:O	1.73	0.89
2:B:99:LYS:HG2	7:B:247:HOH:O	1.73	0.88
2:B:46:HIS:HD2	2:B:134:HIS:CE1	1.89	0.88
2:B:48:PRO:O	2:B:49:GLU:HB2	1.74	0.87
1:A:104:GLU:O	1:A:108[A]:THR:HG23	1.83	0.79
2:B:141:GLY:HA3	7:B:200:HOH:O	1.85	0.77
1:A:48:PRO:O	7:A:209:HOH:O	2.02	0.77
2:B:23:LEU:HD23	2:B:23:LEU:C	2.05	0.76
2:B:99:LYS:HE3	7:B:247:HOH:O	1.87	0.74

*Continued on next page...*

*Continued from previous page...*

Atom-1	Atom-2	Interatomic distance (Å)	Clash overlap (Å)
1:A:46:HIS:ND1	1:A:134:HIS:HE1	1.86	0.73
2:B:48:PRO:O	7:B:251:HOH:O	2.08	0.72
2:B:23:LEU:HD23	2:B:24:TYR:N	2.06	0.70
1:A:134:HIS:HD2	7:B:255:HOH:O	1.77	0.68
1:A:94[A]:VAL:HG23	7:A:214:HOH:O	1.94	0.68
2:B:99:LYS:HE2	2:B:101:PRO:HD3	1.77	0.67
2:B:48:PRO:O	2:B:49:GLU:CB	2.44	0.65
6:B:197:GOL:H31	7:B:256:HOH:O	1.98	0.64
1:A:130:PRO:HD3	2:B:40:LEU:HD23	1.79	0.64
1:A:48:PRO:O	1:A:49:GLU:HB2	1.98	0.62
1:A:107:HIS:HD2	1:A:148:ALA:O	1.82	0.62
2:B:134:HIS:HD2	7:B:243:HOH:O	1.83	0.61
2:B:185:SER:OG	6:B:197:GOL:H32	2.03	0.59
2:B:74:PRO:O	2:B:78:GLU:HG3	2.03	0.59
2:B:56:LEU:O	2:B:175:HIS:HE1	1.86	0.58
2:B:23:LEU:HD22	2:B:25:LEU:HD12	1.86	0.58
2:B:191:SER:HB3	2:B:194:GLU:HG3	1.87	0.57
2:B:58:LEU:HD13	2:B:67:CYS:HB2	1.87	0.56
2:B:34:LEU:HD11	2:B:65:ILE:HG12	1.88	0.56
1:A:13:VAL:HG22	1:A:25:LEU:HB2	1.87	0.55
1:A:130:PRO:HD3	2:B:40:LEU:CD2	2.37	0.55
2:B:26:ASP:H	2:B:29:GLN:HE21	1.55	0.55
1:A:185:SER:HB2	2:B:188:ASN:OD1	2.08	0.54
2:B:23:LEU:CD2	2:B:23:LEU:C	2.75	0.54
2:B:182:GLU:CD	2:B:182:GLU:H	2.11	0.54
1:A:4:GLY:CA	7:A:240:HOH:O	2.56	0.53
2:B:63:HIS:HD2	7:B:242:HOH:O	1.92	0.53
1:A:4:GLY:HA2	7:A:240:HOH:O	2.12	0.50
1:A:42:ILE:HA	1:A:135:VAL:O	2.11	0.49
2:B:18:LYS:O	2:B:19:LEU:HB2	2.12	0.49
1:A:5:LEU:HD13	1:A:77:LEU:HD22	1.95	0.48
2:B:51:GLU:O	2:B:189:PHE:HB2	2.14	0.48
2:B:100:GLU:O	2:B:100:GLU:CG	2.55	0.48
1:A:4:GLY:N	7:A:240:HOH:O	2.47	0.47
4:B:198:NJQ:H45	4:B:198:NJQ:C18	2.44	0.47
1:A:26:ASP:OD2	1:A:28:ASP:HB2	2.15	0.47
2:B:63:HIS:CD2	7:B:242:HOH:O	2.66	0.46
2:B:12:ASP:HB2	7:B:222:HOH:O	2.16	0.46
2:B:94:VAL:HG11	2:B:97:LEU:CD2	2.47	0.44
1:A:58:LEU:HD13	1:A:67:CYS:HB2	1.98	0.44
1:A:130:PRO:CD	2:B:40:LEU:HD23	2.47	0.43

*Continued on next page...*

Continued from previous page...

Atom-1	Atom-2	Interatomic distance (Å)	Clash overlap (Å)
1:A:58:LEU:CD1	1:A:67:CYS:HB2	2.49	0.43
2:B:26:ASP:O	2:B:29:GLN:HB2	2.17	0.43
1:A:119:HIS:ND1	1:A:121:ARG:HB2	2.34	0.43
2:B:95:LYS:HA	2:B:96:ASN:HA	1.76	0.43
1:A:124:SER:C	1:A:125:GLN:HG2	2.39	0.43
2:B:160:ARG:NH2	5:B:3[B]:SO4:O4	2.45	0.41
2:B:46:HIS:CD2	2:B:134:HIS:CE1	2.79	0.41
2:B:99:LYS:HA	2:B:101:PRO:HD3	2.02	0.41
2:B:42:ILE:HA	2:B:135:VAL:O	2.21	0.41
1:A:94[A]:VAL:HG21	1:A:104:GLU:HB3	2.02	0.41
1:A:160:ARG:HA	1:A:160:ARG:HD2	1.91	0.40
2:B:31:THR:HG22	2:B:34:LEU:HD12	2.04	0.40
1:A:128:SER:HB3	2:B:36:VAL:HG22	2.04	0.40

There are no symmetry-related clashes.

## 5.3 Torsion angles [i](#)

### 5.3.1 Protein backbone [i](#)

In the following table, the Percentiles column shows the percent Ramachandran outliers of the chain as a percentile score with respect to all X-ray entries followed by that with respect to entries of similar resolution.

The Analysed column shows the number of residues for which the backbone conformation was analysed, and the total number of residues.

Mol	Chain	Analysed	Favoured	Allowed	Outliers	Percentiles	
1	A	189/193 (98%)	182 (96%)	6 (3%)	1 (0%)	32	26
2	B	184/193 (95%)	174 (95%)	6 (3%)	4 (2%)	8	3
All	All	373/386 (97%)	356 (95%)	12 (3%)	5 (1%)	13	7

All (5) Ramachandran outliers are listed below:

Mol	Chain	Res	Type
2	B	62	SER
2	B	19	LEU
1	A	126	THR
2	B	100	GLU
2	B	120	PRO

### 5.3.2 Protein sidechains ⓘ

In the following table, the Percentiles column shows the percent sidechain outliers of the chain as a percentile score with respect to all X-ray entries followed by that with respect to entries of similar resolution.

The Analysed column shows the number of residues for which the sidechain conformation was analysed, and the total number of residues.

Mol	Chain	Analysed	Rotameric	Outliers	Percentiles	
1	A	170/170 (100%)	162 (95%)	8 (5%)	30	26
2	B	166/169 (98%)	156 (94%)	10 (6%)	22	17
All	All	336/339 (99%)	318 (95%)	18 (5%)	26	20

All (18) residues with a non-rotameric sidechain are listed below:

Mol	Chain	Res	Type
1	A	13	VAL
1	A	34	LEU
1	A	38	GLU
1	A	83	LEU
1	A	88	HIS
1	A	121	ARG
1	A	167	SER
1	A	190	VAL
2	B	5	LEU
2	B	19	LEU
2	B	58	LEU
2	B	61	VAL
2	B	79	LEU
2	B	89	VAL
2	B	95	LYS
2	B	96	ASN
2	B	99	LYS
2	B	100	GLU

Some sidechains can be flipped to improve hydrogen bonding and reduce clashes. All (11) such sidechains are listed below:

Mol	Chain	Res	Type
1	A	29	GLN
1	A	107	HIS
1	A	134	HIS
1	A	152	HIS

*Continued on next page...*

*Continued from previous page...*

Mol	Chain	Res	Type
1	A	175	HIS
2	B	21	GLN
2	B	29	GLN
2	B	46	HIS
2	B	63	HIS
2	B	134	HIS
2	B	175	HIS

### 5.3.3 RNA ⓘ

There are no RNA molecules in this entry.

## 5.4 Non-standard residues in protein, DNA, RNA chains ⓘ

3 non-standard protein/DNA/RNA residues are modelled in this entry.

In the following table, the Counts columns list the number of bonds (or angles) for which Mogul statistics could be retrieved, the number of bonds (or angles) that are observed in the model and the number of bonds (or angles) that are defined in the Chemical Component Dictionary. The Link column lists molecule types, if any, to which the group is linked. The Z score for a bond length (or angle) is the number of standard deviations the observed value is removed from the expected value. A bond length (or angle) with  $|Z| > 2$  is considered an outlier worth inspection. RMSZ is the root-mean-square of all Z scores of the bond lengths (or angles).

Mol	Type	Chain	Res	Link	Bond lengths			Bond angles		
					Counts	RMSZ	$\# Z  > 2$	Counts	RMSZ	$\# Z  > 2$
1	CSO	A	16	1	4,6,7	2.04	1 (25%)	1,6,8	1.79	0
2	CSO	B	16	2	4,6,7	0.53	0	1,6,8	1.78	0
2	CSO	B	179	2	4,6,7	1.59	1 (25%)	1,6,8	1.50	0

In the following table, the Chirals column lists the number of chiral outliers, the number of chiral centers analysed, the number of these observed in the model and the number defined in the Chemical Component Dictionary. Similar counts are reported in the Torsion and Rings columns. '-' means no outliers of that kind were identified.

Mol	Type	Chain	Res	Link	Chirals	Torsions	Rings
1	CSO	A	16	1	-	0/1/5/7	0/0/0/0
2	CSO	B	16	2	-	0/1/5/7	0/0/0/0
2	CSO	B	179	2	-	0/1/5/7	0/0/0/0

All (2) bond length outliers are listed below:

Mol	Chain	Res	Type	Atoms	Z	Observed(Å)	Ideal(Å)
2	B	179	CSO	CA-C	2.95	1.54	1.50
1	A	16	CSO	CA-C	3.88	1.55	1.50

There are no bond angle outliers.

There are no chirality outliers.

There are no torsion outliers.

There are no ring outliers.

No monomer is involved in short contacts.

## 5.5 Carbohydrates [i](#)

There are no carbohydrates in this entry.

## 5.6 Ligand geometry [i](#)

9 ligands are modelled in this entry.

In the following table, the Counts columns list the number of bonds (or angles) for which Mogul statistics could be retrieved, the number of bonds (or angles) that are observed in the model and the number of bonds (or angles) that are defined in the Chemical Component Dictionary. The Link column lists molecule types, if any, to which the group is linked. The Z score for a bond length (or angle) is the number of standard deviations the observed value is removed from the expected value. A bond length (or angle) with  $|Z| > 2$  is considered an outlier worth inspection. RMSZ is the root-mean-square of all Z scores of the bond lengths (or angles).

Mol	Type	Chain	Res	Link	Bond lengths			Bond angles		
					Counts	RMSZ	# Z  > 2	Counts	RMSZ	# Z  > 2
3	ACT	A	1	-	1,3,3	2.26	1 (100%)	0,3,3	0.00	-
4	NJQ	A	197	-	32,35,35	0.93	2 (6%)	43,47,47	1.40	8 (18%)
5	SO4	B	1	-	4,4,4	0.23	0	6,6,6	0.89	0
6	GOL	B	197	-	5,5,5	1.38	1 (20%)	5,5,5	1.75	2 (40%)
4	NJQ	B	198	-	32,35,35	1.02	2 (6%)	43,47,47	1.47	7 (16%)
4	NJQ	B	199	-	32,35,35	0.88	1 (3%)	43,47,47	1.29	5 (11%)
5	SO4	B	2	-	4,4,4	0.95	0	6,6,6	1.07	1 (16%)
5	SO4	B	3[A]	-	4,4,4	0.16	0	6,6,6	0.87	0
5	SO4	B	3[B]	-	4,4,4	0.23	0	6,6,6	0.68	0

In the following table, the Chirals column lists the number of chiral outliers, the number of chiral centers analysed, the number of these observed in the model and the number defined in the

Chemical Component Dictionary. Similar counts are reported in the Torsion and Rings columns. '-' means no outliers of that kind were identified.

Mol	Type	Chain	Res	Link	Chirals	Torsions	Rings
3	ACT	A	1	-	-	0/0/0/0	0/0/0/0
4	NJQ	A	197	-	-	0/16/28/28	0/4/4/4
5	SO4	B	1	-	-	0/0/0/0	0/0/0/0
6	GOL	B	197	-	-	0/4/4/4	0/0/0/0
4	NJQ	B	198	-	-	0/16/28/28	0/4/4/4
4	NJQ	B	199	-	-	0/16/28/28	0/4/4/4
5	SO4	B	2	-	-	0/0/0/0	0/0/0/0
5	SO4	B	3[A]	-	-	0/0/0/0	0/0/0/0
5	SO4	B	3[B]	-	-	0/0/0/0	0/0/0/0

All (7) bond length outliers are listed below:

Mol	Chain	Res	Type	Atoms	Z	Observed(Å)	Ideal(Å)
4	B	198	NJQ	C7-N8	-3.77	1.34	1.41
4	B	199	NJQ	C7-N8	-2.98	1.36	1.41
4	A	197	NJQ	C7-N8	-2.91	1.36	1.41
4	B	198	NJQ	C45-C41	2.02	1.58	1.52
4	A	197	NJQ	C6-C5	2.16	1.42	1.38
3	A	1	ACT	CH3-C	2.26	1.51	1.48
6	B	197	GOL	O3-C3	2.74	1.53	1.42

All (23) bond angle outliers are listed below:

Mol	Chain	Res	Type	Atoms	Z	Observed(°)	Ideal(°)
4	A	197	NJQ	C48-C45-C41	-2.87	106.92	112.19
4	B	199	NJQ	C4-C3-C2	-2.73	117.89	121.98
4	A	197	NJQ	C1-C2-C3	-2.66	116.02	120.22
4	B	198	NJQ	C34-C35-N36	-2.65	119.00	122.40
4	A	197	NJQ	C34-C35-N36	-2.39	119.34	122.40
4	B	199	NJQ	C19-C20-C15	-2.29	117.16	120.64
4	A	197	NJQ	C44-C41-C45	-2.28	103.65	109.27
4	B	198	NJQ	C1-C2-C3	-2.15	116.82	120.22
4	B	199	NJQ	C44-C41-C45	2.01	114.24	109.27
4	B	198	NJQ	C7-N8-C28	2.01	132.59	126.99
4	A	197	NJQ	C18-C19-C20	2.03	123.00	120.21
4	A	197	NJQ	C3-C2-C7	2.11	120.29	118.46
5	B	2	SO4	O4-S-O3	2.22	118.97	108.96
6	B	197	GOL	O2-C2-C3	2.24	119.43	108.84
4	B	198	NJQ	C44-C41-C37	2.27	116.87	111.85
4	B	199	NJQ	C5-C4-C3	2.30	121.13	118.16

*Continued on next page...*



*Continued from previous page...*

Mol	Chain	Res	Type	Atoms	Z	Observed(°)	Ideal(°)
6	B	197	GOL	C3-C2-C1	2.48	121.38	111.52
4	A	197	NJQ	C30-N36-C35	2.83	121.60	117.95
4	A	197	NJQ	C47-C57-C44	2.86	117.34	111.42
4	B	199	NJQ	C3-C2-C7	2.92	120.99	118.46
4	B	198	NJQ	C44-C41-C45	2.92	116.49	109.27
4	B	198	NJQ	C30-N36-C35	3.59	122.59	117.95
4	B	198	NJQ	C48-C45-C41	3.79	119.15	112.19

There are no chirality outliers.

There are no torsion outliers.

There are no ring outliers.

3 monomers are involved in 4 short contacts:

Mol	Chain	Res	Type	Clashes	Symm-Clashes
6	B	197	GOL	2	0
4	B	198	NJQ	1	0
5	B	3[B]	SO4	1	0

## 5.7 Other polymers [i](#)

There are no such residues in this entry.

## 5.8 Polymer linkage issues [i](#)

There are no chain breaks in this entry.

## 6 Fit of model and data [i](#)

### 6.1 Protein, DNA and RNA chains [i](#)

In the following table, the column labelled ‘#RSRZ> 2’ contains the number (and percentage) of RSRZ outliers, followed by percent RSRZ outliers for the chain as percentile scores relative to all X-ray entries and entries of similar resolution. The OWAB column contains the minimum, median, 95<sup>th</sup> percentile and maximum values of the occupancy-weighted average B-factor per residue. The column labelled ‘Q< 0.9’ lists the number of (and percentage) of residues with an average occupancy less than 0.9.

Mol	Chain	Analysed	<RSRZ>	#RSRZ>2	OWAB(Å <sup>2</sup> )	Q<0.9
1	A	189/193 (97%)	0.22	11 (5%) 24 24	26, 46, 84, 100	0
2	B	187/193 (96%)	0.24	5 (2%) 55 54	23, 39, 63, 81	1 (0%)
All	All	376/386 (97%)	0.23	16 (4%) 36 36	23, 42, 79, 100	1 (0%)

All (16) RSRZ outliers are listed below:

Mol	Chain	Res	Type	RSRZ
2	B	18	LYS	3.0
1	A	180	ARG	2.8
1	A	145	GLY	2.8
1	A	124	SER	2.7
1	A	38	GLU	2.6
1	A	123	LEU	2.4
1	A	4	GLY	2.4
1	A	175	HIS	2.4
1	A	19	LEU	2.4
2	B	19	LEU	2.4
1	A	125	GLN	2.3
2	B	100	GLU	2.3
1	A	193[A]	LEU	2.2
2	B	92	ALA	2.2
1	A	183	ASP	2.1
2	B	94	VAL	2.0

### 6.2 Non-standard residues in protein, DNA, RNA chains [i](#)

In the following table, the Atoms column lists the number of modelled atoms in the group and the number defined in the chemical component dictionary. LLDF column lists the quality of electron density of the group with respect to its neighbouring residues in protein, DNA or RNA chains. The B-factors column lists the minimum, median, 95<sup>th</sup> percentile and maximum values of B factors of atoms in the group. The column labelled ‘Q< 0.9’ lists the number of atoms with occupancy

less than 0.9.

Mol	Type	Chain	Res	Atoms	RSCC	RSR	LLDF	B-factors( $\text{\AA}^2$ )	Q<0.9
2	CSO	B	16	7/8	0.74	0.15	-	47,54,57,59	0
1	CSO	A	16	7/8	0.95	0.07	-	49,50,53,55	0
2	CSO	B	179	7/8	0.92	0.11	-	37,49,54,55	0

### 6.3 Carbohydrates [i](#)

There are no carbohydrates in this entry.

### 6.4 Ligands [i](#)

In the following table, the Atoms column lists the number of modelled atoms in the group and the number defined in the chemical component dictionary. LLDF column lists the quality of electron density of the group with respect to its neighbouring residues in protein, DNA or RNA chains. The B-factors column lists the minimum, median, 95<sup>th</sup> percentile and maximum values of B factors of atoms in the group. The column labelled 'Q< 0.9' lists the number of atoms with occupancy less than 0.9.

Mol	Type	Chain	Res	Atoms	RSCC	RSR	LLDF	B-factors( $\text{\AA}^2$ )	Q<0.9
3	ACT	A	1	4/4	0.77	0.24	2.92	46,47,47,48	0
5	SO4	B	2	5/5	0.89	0.21	2.06	30,38,39,39	5
6	GOL	B	197	6/6	0.82	0.15	1.09	34,34,37,41	0
4	NJQ	A	197	32/32	0.93	0.13	0.01	28,30,33,33	0
4	NJQ	B	198	32/32	0.94	0.13	-0.48	24,28,32,39	0
4	NJQ	B	199	32/32	0.95	0.12	-0.99	28,32,37,39	0
5	SO4	B	3[B]	5/5	0.81	0.30	-	40,42,45,47	5
5	SO4	B	3[A]	5/5	0.81	0.30	-	33,36,38,39	5
5	SO4	B	1	5/5	0.98	0.14	-	26,26,28,30	5

### 6.5 Other polymers [i](#)

There are no such residues in this entry.