



# Full wwPDB X-ray Structure Validation Report ⓘ

Jan 14, 2018 – 08:03 PM EST

PDB ID : 5NJU  
Title : Flavivirus NS5 domain  
Authors : Talapatra, S.K.; Chatrin, C.; Kozielski, F.  
Deposited on : 2017-03-29  
Resolution : 2.10 Å(reported)

This is a Full wwPDB X-ray Structure Validation Report for a publicly released PDB entry.

We welcome your comments at [validation@mail.wwpdb.org](mailto:validation@mail.wwpdb.org)

A user guide is available at

<http://wwpdb.org/validation/2016/XrayValidationReportHelp>

with specific help available everywhere you see the ⓘ symbol.

---

The following versions of software and data (see [references ⓘ](#)) were used in the production of this report:

MolProbity : 4.02b-467  
Mogul : 1.7.2 (RC1), CSD as538be (2017)  
Xtriage (Phenix) : 1.9-1692  
EDS : rb-20030736  
Percentile statistics : 20161228.v01 (using entries in the PDB archive December 28th 2016)  
Refmac : 5.8.0135  
CCP4 : 6.5.0  
Ideal geometry (proteins) : Engh & Huber (2001)  
Ideal geometry (DNA, RNA) : Parkinson et al. (1996)  
Validation Pipeline (wwPDB-VP) : rb-20030736

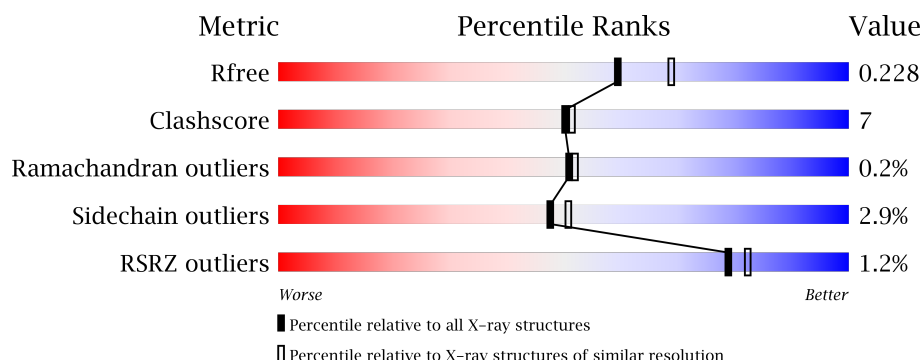
# 1 Overall quality at a glance

The following experimental techniques were used to determine the structure:

*X-RAY DIFFRACTION*

The reported resolution of this entry is 2.10 Å.

Percentile scores (ranging between 0-100) for global validation metrics of the entry are shown in the following graphic. The table shows the number of entries on which the scores are based.



Metric	Whole archive (#Entries)	Similar resolution (#Entries, resolution range(Å))
$R_{free}$	100719	4243 (2.10-2.10)
Clashscore	112137	4788 (2.10-2.10)
Ramachandran outliers	110173	4740 (2.10-2.10)
Sidechain outliers	110143	4741 (2.10-2.10)
RSRZ outliers	101464	4275 (2.10-2.10)

The table below summarises the geometric issues observed across the polymeric chains and their fit to the electron density. The red, orange, yellow and green segments on the lower bar indicate the fraction of residues that contain outliers for  $\geq 3$ , 2, 1 and 0 types of geometric quality criteria. A grey segment represents the fraction of residues that are not modelled. The numeric value for each fraction is indicated below the corresponding segment, with a dot representing fractions  $\leq 5\%$ . The upper red bar (where present) indicates the fraction of residues that have poor fit to the electron density. The numeric value is given above the bar.

Mol	Chain	Length	Quality of chain
1	A	260	<div> <div style="width: 100%; height: 10px; position: relative;"> <div style="position: absolute; top: -10px; left: 0; width: 100%;"></div> <div style="position: absolute; top: 0; left: 0; width: 100%; height: 10px;"> <div style="width: 2%; height: 10px; background-color: red;"></div> <div style="width: 86%; height: 10px; background-color: green;"></div> <div style="width: 13%; height: 10px; background-color: yellow;"></div> <div style="width: 1%; height: 10px; background-color: orange;"></div> </div> </div> <div> <div style="width: 2%; height: 10px; background-color: red;"></div> <div style="width: 86%; height: 10px; background-color: green;"></div> <div style="width: 13%; height: 10px; background-color: yellow;"></div> <div style="width: 1%; height: 10px; background-color: orange;"></div> </div> </div>
1	B	260	<div> <div style="width: 100%; height: 10px; position: relative;"> <div style="position: absolute; top: -10px; left: 0; width: 100%;"></div> <div style="position: absolute; top: 0; left: 0; width: 100%; height: 10px;"> <div style="width: 2%; height: 10px; background-color: red;"></div> <div style="width: 82%; height: 10px; background-color: green;"></div> <div style="width: 12%; height: 10px; background-color: yellow;"></div> <div style="width: 4%; height: 10px; background-color: orange;"></div> <div style="width: 2%; height: 10px; background-color: grey;"></div> </div> </div> <div> <div style="width: 2%; height: 10px; background-color: red;"></div> <div style="width: 82%; height: 10px; background-color: green;"></div> <div style="width: 12%; height: 10px; background-color: yellow;"></div> <div style="width: 4%; height: 10px; background-color: orange;"></div> <div style="width: 2%; height: 10px; background-color: grey;"></div> </div> </div>

The following table lists non-polymeric compounds, carbohydrate monomers and non-standard residues in protein, DNA, RNA chains that are outliers for geometric or electron-density-fit criteria:

Mol	Type	Chain	Res	Chirality	Geometry	Clashes	Electron density
3	MG	A	1002	-	-	-	X
3	MG	B	1002	-	-	-	X

## 2 Entry composition [i](#)

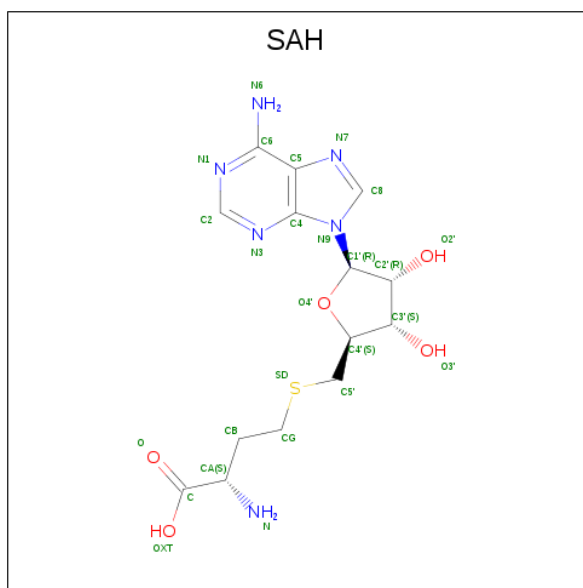
There are 4 unique types of molecules in this entry. The entry contains 4461 atoms, of which 0 are hydrogens and 0 are deuteriums.

In the tables below, the ZeroOcc column contains the number of atoms modelled with zero occupancy, the AltConf column contains the number of residues with at least one atom in alternate conformation and the Trace column contains the number of residues modelled with at most 2 atoms.

- Molecule 1 is a protein called Genome polyprotein.

Mol	Chain	Residues	Atoms					ZeroOcc	AltConf	Trace
1	A	260	Total	C	N	O	S	0	5	0
			2053	1282	372	386	13			
1	B	246	Total	C	N	O	S	0	4	0
			1928	1215	342	358	13			

- Molecule 2 is S-ADENOSYL-L-HOMOCYSTEINE (three-letter code: SAH) (formula:  $C_{14}H_{20}N_6O_5S$ ).



Mol	Chain	Residues	Atoms					ZeroOcc	AltConf
2	A	1	Total	C	N	O	S	0	0
			26	14	6	5	1		
2	B	1	Total	C	N	O	S	0	0
			26	14	6	5	1		

- Molecule 3 is MAGNESIUM ION (three-letter code: MG) (formula: Mg).

Mol	Chain	Residues	Atoms		ZeroOcc	AltConf
3	B	1	Total 1	Mg 1	0	0
3	A	1	Total 1	Mg 1	0	0

- Molecule 4 is water.

Mol	Chain	Residues	Atoms		ZeroOcc	AltConf
4	A	253	Total 253	O 253	0	0
4	B	173	Total 173	O 173	0	0



## 4 Data and refinement statistics

Property	Value	Source
Space group	P 43 21 2	Depositor
Cell constants a, b, c, $\alpha$ , $\beta$ , $\gamma$	67.39 Å 67.39 Å 272.55 Å 90.00° 90.00° 90.00°	Depositor
Resolution (Å)	39.05 – 2.10 39.05 – 2.10	Depositor EDS
% Data completeness (in resolution range)	99.7 (39.05-2.10) 99.7 (39.05-2.10)	Depositor EDS
$R_{merge}$	11.10	Depositor
$R_{sym}$	(Not available)	Depositor
$\langle I/\sigma(I) \rangle$ <sup>1</sup>	2.60 (at 2.10 Å)	Xtriage
Refinement program	PHENIX (1.10.1 _2155: ???)	Depositor
R, $R_{free}$	0.175 , 0.229 0.173 , 0.228	Depositor DCC
$R_{free}$ test set	1905 reflections (5.04%)	DCC
Wilson B-factor (Å <sup>2</sup> )	28.3	Xtriage
Anisotropy	0.285	Xtriage
Bulk solvent $k_{sol}$ (e/Å <sup>3</sup> ), $B_{sol}$ (Å <sup>2</sup> )	0.34 , 51.3	EDS
L-test for twinning <sup>2</sup>	$\langle  L  \rangle = 0.46$ , $\langle L^2 \rangle = 0.29$	Xtriage
Estimated twinning fraction	No twinning to report.	Xtriage
$F_o, F_c$ correlation	0.95	EDS
Total number of atoms	4461	wwPDB-VP
Average B, all atoms (Å <sup>2</sup> )	31.0	wwPDB-VP

Xtriage's analysis on translational NCS is as follows: *The largest off-origin peak in the Patterson function is 5.25% of the height of the origin peak. No significant pseudotranslation is detected.*

<sup>1</sup>Intensities estimated from amplitudes.

<sup>2</sup>Theoretical values of  $\langle |L| \rangle$ ,  $\langle L^2 \rangle$  for acentric reflections are 0.5, 0.333 respectively for untwinned datasets, and 0.375, 0.2 for perfectly twinned datasets.

## 5 Model quality [i](#)

### 5.1 Standard geometry [i](#)

Bond lengths and bond angles in the following residue types are not validated in this section: MG, SAH

The Z score for a bond length (or angle) is the number of standard deviations the observed value is removed from the expected value. A bond length (or angle) with  $|Z| > 5$  is considered an outlier worth inspection. RMSZ is the root-mean-square of all Z scores of the bond lengths (or angles).

Mol	Chain	Bond lengths		Bond angles	
		RMSZ	$\# Z  > 5$	RMSZ	$\# Z  > 5$
1	A	0.62	0/2096	0.77	1/2828 (0.0%)
1	B	0.55	0/1973	0.66	0/2662
All	All	0.59	0/4069	0.72	1/5490 (0.0%)

Chiral center outliers are detected by calculating the chiral volume of a chiral center and verifying if the center is modelled as a planar moiety or with the opposite hand. A planarity outlier is detected by checking planarity of atoms in a peptide group, atoms in a mainchain group or atoms of a sidechain that are expected to be planar.

Mol	Chain	#Chirality outliers	#Planarity outliers
1	A	0	1

There are no bond length outliers.

All (1) bond angle outliers are listed below:

Mol	Chain	Res	Type	Atoms	Z	Observed( $^{\circ}$ )	Ideal( $^{\circ}$ )
1	A	57	ARG	NE-CZ-NH2	-5.19	117.70	120.30

There are no chirality outliers.

All (1) planarity outliers are listed below:

Mol	Chain	Res	Type	Group
1	A	38	GLU	Peptide

### 5.2 Too-close contacts [i](#)

In the following table, the Non-H and H(model) columns list the number of non-hydrogen atoms and hydrogen atoms in the chain respectively. The H(added) column lists the number of hydrogen atoms added and optimized by MolProbity. The Clashes column lists the number of clashes within



the asymmetric unit, whereas Symm-Clashes lists symmetry related clashes.

Mol	Chain	Non-H	H(model)	H(added)	Clashes	Symm-Clashes
1	A	2053	0	2041	25	0
1	B	1928	0	1926	29	0
2	A	26	0	19	0	0
2	B	26	0	19	2	0
3	A	1	0	0	0	0
3	B	1	0	0	0	0
4	A	253	0	0	12	2
4	B	173	0	0	8	2
All	All	4461	0	4005	53	2

The all-atom clashscore is defined as the number of clashes found per 1000 atoms (including hydrogen atoms). The all-atom clashscore for this structure is 7.

All (53) close contacts within the same asymmetric unit are listed below, sorted by their clash magnitude.

Atom-1	Atom-2	Interatomic distance (Å)	Clash overlap (Å)
1:B:161:THR:O	4:B:1101:HOH:O	1.61	1.19
1:A:103:TYR:HB3	1:A:130[B]:VAL:HG21	1.63	0.79
1:B:230:ILE:O	1:B:234:SER:OG	2.03	0.77
1:B:74:TYR:H	1:B:142:THR:HG21	1.52	0.74
1:A:17:ASN:O	4:A:1101:HOH:O	2.07	0.72
1:A:117:GLN:NE2	4:A:1103:HOH:O	2.21	0.72
1:B:200:ARG:NH2	4:B:1102:HOH:O	2.08	0.71
1:B:165:LEU:HA	1:B:168:VAL:HG22	1.72	0.69
1:A:189:SER:O	1:A:193:GLU:HG3	1.96	0.64
1:B:163:ARG:NH2	4:B:1110:HOH:O	2.32	0.61
1:B:74:TYR:H	1:B:142:THR:CG2	2.13	0.61
1:A:38:GLU:HG3	1:A:39:GLU:N	2.15	0.60
1:B:146:ASP:OD2	2:B:1001:SAH:HG1	2.01	0.60
1:B:201:ARG:HD3	1:B:202:TYR:CZ	2.38	0.58
1:A:228:ASN:OD1	1:A:231:LYS:N	2.27	0.58
1:A:130[B]:VAL:HG12	1:B:68:ARG:HD3	1.87	0.56
1:B:254:GLU:OE1	4:B:1103:HOH:O	2.19	0.54
1:A:230:ILE:HD12	4:A:1171:HOH:O	2.09	0.53
1:A:249:ARG:NH2	4:A:1113:HOH:O	2.41	0.53
1:B:163:ARG:NH1	4:B:1108:HOH:O	2.28	0.52
1:B:173:GLU:OE2	1:B:201:ARG:NH1	2.42	0.52
1:A:182:LYS:NZ	4:A:1115:HOH:O	2.43	0.52
1:A:213:ARG:NH1	4:A:1114:HOH:O	2.42	0.52
1:A:57:ARG:HD3	4:A:1183:HOH:O	2.09	0.51

*Continued on next page...*

*Continued from previous page...*

Atom-1	Atom-2	Interatomic distance (Å)	Clash overlap (Å)
1:A:9:GLY:HA3	1:A:187:TYR:HB2	1.93	0.51
1:B:19:MET:HE1	1:B:244:MET:HG2	1.92	0.50
1:B:73:PRO:HA	1:B:142:THR:HG21	1.94	0.50
1:A:213:ARG:NE	4:A:1114:HOH:O	2.44	0.50
1:A:213:ARG:CZ	4:A:1114:HOH:O	2.60	0.49
1:A:25:TYR:HB2	4:A:1148:HOH:O	2.12	0.49
1:A:126:LEU:O	1:A:127:LYS:HD2	2.13	0.48
1:A:149:GLU:HG3	1:A:160:ARG:NH2	2.29	0.48
1:B:201:ARG:HD3	1:B:202:TYR:CE2	2.49	0.48
1:A:78:ILE:HG13	1:A:140:CYS:HB3	1.96	0.47
1:B:185:CYS:O	1:B:191:MET:HG3	2.15	0.46
1:A:61:LYS:NZ	1:A:218:GLU:OE2	2.45	0.46
1:B:120:GLY:HA2	1:B:270:ARG:HG3	1.98	0.45
1:B:58:GLY:HA3	2:B:1001:SAH:O	2.17	0.45
1:B:125:ARG:HH11	1:B:127:LYS:HZ3	1.66	0.44
1:B:29:LYS:HB2	4:B:1154:HOH:O	2.17	0.44
1:B:19:MET:CE	1:B:244:MET:HG2	2.47	0.44
1:B:125:ARG:NH2	4:B:1121:HOH:O	2.50	0.44
1:A:185:CYS:O	1:A:191:MET:HG3	2.16	0.44
1:B:125:ARG:HH11	1:B:127:LYS:NZ	2.15	0.44
1:B:252:LYS:HD2	1:B:252:LYS:N	2.33	0.43
1:B:163:ARG:NH2	4:B:1108:HOH:O	2.49	0.42
1:A:38:GLU:HG3	1:A:39:GLU:CA	2.49	0.42
1:A:38:GLU:OE1	4:A:1104:HOH:O	2.21	0.42
1:A:62:LEU:HA	1:A:62:LEU:HD12	1.79	0.41
1:B:142:THR:HB	1:B:178:ALA:HB3	2.02	0.41
1:B:142:THR:HA	1:B:178:ALA:O	2.20	0.41
1:A:243:ARG:HG2	4:A:1246:HOH:O	2.21	0.41
1:B:9:GLY:HA3	1:B:187:TYR:HB2	2.03	0.40

All (2) symmetry-related close contacts are listed below. The label for Atom-2 includes the symmetry operator and encoded unit-cell translations to be applied.

Atom-1	Atom-2	Interatomic distance (Å)	Clash overlap (Å)
4:A:1329:HOH:O	4:B:1254:HOH:O[6_557]	2.09	0.11
4:A:1260:HOH:O	4:B:1106:HOH:O[7_647]	2.19	0.01

## 5.3 Torsion angles [i](#)

### 5.3.1 Protein backbone [i](#)

In the following table, the Percentiles column shows the percent Ramachandran outliers of the chain as a percentile score with respect to all X-ray entries followed by that with respect to entries of similar resolution.

The Analysed column shows the number of residues for which the backbone conformation was analysed, and the total number of residues.

Mol	Chain	Analysed	Favoured	Allowed	Outliers	Percentiles	
1	A	263/260 (101%)	258 (98%)	4 (2%)	1 (0%)	38	35
1	B	246/260 (95%)	240 (98%)	6 (2%)	0	100	100
All	All	509/520 (98%)	498 (98%)	10 (2%)	1 (0%)	51	52

All (1) Ramachandran outliers are listed below:

Mol	Chain	Res	Type
1	A	108	PRO

### 5.3.2 Protein sidechains [i](#)

In the following table, the Percentiles column shows the percent sidechain outliers of the chain as a percentile score with respect to all X-ray entries followed by that with respect to entries of similar resolution.

The Analysed column shows the number of residues for which the sidechain conformation was analysed, and the total number of residues.

Mol	Chain	Analysed	Rotameric	Outliers	Percentiles	
1	A	219/216 (101%)	209 (95%)	10 (5%)	31	29
1	B	207/216 (96%)	203 (98%)	4 (2%)	62	68
All	All	426/432 (99%)	412 (97%)	14 (3%)	48	45

All (14) residues with a non-rotameric sidechain are listed below:

Mol	Chain	Res	Type
1	A	26	SER
1	A	34	GLU
1	A	44	LEU
1	A	78	ILE
1	A	130[A]	VAL

*Continued on next page...*

*Continued from previous page...*

Mol	Chain	Res	Type
1	A	130[B]	VAL
1	A	142[A]	THR
1	A	142[B]	THR
1	A	227	SER
1	A	251	VAL
1	B	26	SER
1	B	142	THR
1	B	234	SER
1	B	265	LEU

Some sidechains can be flipped to improve hydrogen bonding and reduce clashes. All (1) such sidechains are listed below:

Mol	Chain	Res	Type
1	B	72	GLN

### 5.3.3 RNA [i](#)

There are no RNA molecules in this entry.

## 5.4 Non-standard residues in protein, DNA, RNA chains [i](#)

There are no non-standard protein/DNA/RNA residues in this entry.

## 5.5 Carbohydrates [i](#)

There are no carbohydrates in this entry.

## 5.6 Ligand geometry [i](#)

Of 4 ligands modelled in this entry, 2 are monoatomic - leaving 2 for Mogul analysis.

In the following table, the Counts columns list the number of bonds (or angles) for which Mogul statistics could be retrieved, the number of bonds (or angles) that are observed in the model and the number of bonds (or angles) that are defined in the Chemical Component Dictionary. The Link column lists molecule types, if any, to which the group is linked. The Z score for a bond length (or angle) is the number of standard deviations the observed value is removed from the expected value. A bond length (or angle) with  $|Z| > 2$  is considered an outlier worth inspection. RMSZ is the root-mean-square of all Z scores of the bond lengths (or angles).

Mol	Type	Chain	Res	Link	Bond lengths			Bond angles		
					Counts	RMSZ	# Z  > 2	Counts	RMSZ	# Z  > 2
2	SAH	A	1001	-	20,28,28	3.29	6 (30%)	20,40,40	2.97	9 (45%)
2	SAH	B	1001	-	20,28,28	3.51	6 (30%)	20,40,40	2.88	6 (30%)

In the following table, the Chirals column lists the number of chiral outliers, the number of chiral centers analysed, the number of these observed in the model and the number defined in the Chemical Component Dictionary. Similar counts are reported in the Torsion and Rings columns. '-' means no outliers of that kind were identified.

Mol	Type	Chain	Res	Link	Chirals	Torsions	Rings
2	SAH	A	1001	-	-	0/7/31/31	0/3/3/3
2	SAH	B	1001	-	-	0/7/31/31	0/3/3/3

All (12) bond length outliers are listed below:

Mol	Chain	Res	Type	Atoms	Z	Observed(Å)	Ideal(Å)
2	B	1001	SAH	C2'-C3'	-8.28	1.31	1.53
2	A	1001	SAH	C2'-C3'	-7.78	1.32	1.53
2	B	1001	SAH	O4'-C4'	-5.91	1.31	1.45
2	A	1001	SAH	O4'-C4'	-5.53	1.32	1.45
2	A	1001	SAH	C2'-C1'	2.12	1.57	1.53
2	B	1001	SAH	C2'-C1'	2.43	1.57	1.53
2	B	1001	SAH	C6-N6	3.26	1.47	1.34
2	A	1001	SAH	C6-N6	3.27	1.47	1.34
2	B	1001	SAH	C3'-C4'	4.99	1.66	1.53
2	A	1001	SAH	C3'-C4'	5.24	1.66	1.53
2	A	1001	SAH	O4'-C1'	8.08	1.52	1.41
2	B	1001	SAH	O4'-C1'	9.28	1.54	1.41

All (15) bond angle outliers are listed below:

Mol	Chain	Res	Type	Atoms	Z	Observed(°)	Ideal(°)
2	B	1001	SAH	N3-C2-N1	-8.53	121.43	128.86
2	A	1001	SAH	N3-C2-N1	-7.71	122.14	128.86
2	A	1001	SAH	C4'-O4'-C1'	-5.85	103.54	109.77
2	B	1001	SAH	C4'-O4'-C1'	-5.59	103.81	109.77
2	A	1001	SAH	CG-CB-CA	-4.73	99.41	112.97
2	A	1001	SAH	C1'-N9-C4	-3.60	120.42	126.64
2	B	1001	SAH	CG-CB-CA	-3.58	102.71	112.97
2	B	1001	SAH	C5'-C4'-C3'	-2.70	108.15	115.05
2	A	1001	SAH	CB-CG-SD	-2.59	108.58	113.57
2	A	1001	SAH	C4'-C5'-SD	-2.57	104.50	113.71
2	A	1001	SAH	C4-C5-N7	-2.08	107.40	109.41

Continued on next page...

*Continued from previous page...*

Mol	Chain	Res	Type	Atoms	Z	Observed(°)	Ideal(°)
2	A	1001	SAH	C2'-C3'-C4'	2.07	106.64	102.62
2	B	1001	SAH	C2'-C3'-C4'	2.24	106.98	102.62
2	A	1001	SAH	C5'-SD-CG	2.81	110.81	102.29
2	B	1001	SAH	C5'-SD-CG	4.32	115.37	102.29

There are no chirality outliers.

There are no torsion outliers.

There are no ring outliers.

1 monomer is involved in 2 short contacts:

Mol	Chain	Res	Type	Clashes	Symm-Clashes
2	B	1001	SAH	2	0

## 5.7 Other polymers [i](#)

There are no such residues in this entry.

## 5.8 Polymer linkage issues [i](#)

There are no chain breaks in this entry.

## 6 Fit of model and data [i](#)

### 6.1 Protein, DNA and RNA chains [i](#)

In the following table, the column labelled ‘#RSRZ> 2’ contains the number (and percentage) of RSRZ outliers, followed by percent RSRZ outliers for the chain as percentile scores relative to all X-ray entries and entries of similar resolution. The OWAB column contains the minimum, median, 95<sup>th</sup> percentile and maximum values of the occupancy-weighted average B-factor per residue. The column labelled ‘Q< 0.9’ lists the number of (and percentage) of residues with an average occupancy less than 0.9.

Mol	Chain	Analysed	<RSRZ>	#RSRZ>2	OWAB(Å <sup>2</sup> )	Q<0.9
1	A	260/260 (100%)	-0.39	2 (0%) 86 88	16, 25, 45, 60	0
1	B	246/260 (94%)	-0.18	4 (1%) 72 76	18, 32, 54, 74	0
All	All	506/520 (97%)	-0.29	6 (1%) 79 82	16, 29, 51, 74	0

All (6) RSRZ outliers are listed below:

Mol	Chain	Res	Type	RSRZ
1	B	53	HIS	4.2
1	A	22	LEU	3.8
1	B	108	PRO	3.3
1	B	247	PRO	2.9
1	A	25	TYR	2.5
1	B	107	GLY	2.0

### 6.2 Non-standard residues in protein, DNA, RNA chains [i](#)

There are no non-standard protein/DNA/RNA residues in this entry.

### 6.3 Carbohydrates [i](#)

There are no carbohydrates in this entry.

### 6.4 Ligands [i](#)

In the following table, the Atoms column lists the number of modelled atoms in the group and the number defined in the chemical component dictionary. LLDF column lists the quality of electron density of the group with respect to its neighbouring residues in protein, DNA or RNA chains. The B-factors column lists the minimum, median, 95<sup>th</sup> percentile and maximum values of B factors

of atoms in the group. The column labelled 'Q< 0.9' lists the number of atoms with occupancy less than 0.9.

Mol	Type	Chain	Res	Atoms	RSCC	RSR	LLDF	B-factors( $\text{\AA}^2$ )	Q<0.9
3	MG	A	1002	1/1	0.99	0.20	7.95	13,13,13,13	0
3	MG	B	1002	1/1	0.98	0.23	4.67	17,17,17,17	0
2	SAH	B	1001	26/26	0.93	0.11	-0.31	33,46,52,55	0
2	SAH	A	1001	26/26	0.98	0.07	-1.33	15,23,27,34	0

## 6.5 Other polymers [i](#)

There are no such residues in this entry.