



Full wwPDB X-ray Structure Validation Report ⓘ

Feb 14, 2017 – 07:46 am GMT

PDB ID : 3NLE
Title : Structure of endothelial nitric oxide synthase heme domain complexed with 6- $\{[(3'R,4'R)-3'-[2''-(3'''-fluorophenethylamino)ethoxy]pyrrolidin-4'-yl\}methyl\}$ -4-methylpyridin-2-amine
Authors : Ji, H.; Delker, S.L.; Li, H.; Martasek, P.; Roman, L.; Poulos, T.L.; Silverman, R.B.
Deposited on : 2010-06-21
Resolution : 1.95 Å(reported)

This is a Full wwPDB X-ray Structure Validation Report for a publicly released PDB entry.

We welcome your comments at validation@mail.wwpdb.org

A user guide is available at

<http://wwpdb.org/validation/2016/XrayValidationReportHelp>

with specific help available everywhere you see the ⓘ symbol.

The following versions of software and data (see [references ⓘ](#)) were used in the production of this report:

MolProbity : 4.02b-467
Mogul : 1.7.2 (RC1), CSD as538be (2017)
Xtriage (Phenix) : 1.9-1692
EDS : trunk28620
Percentile statistics : 20161228.v01 (using entries in the PDB archive December 28th 2016)
Refmac : 5.8.0135
CCP4 : 6.5.0
Ideal geometry (proteins) : Engh & Huber (2001)
Ideal geometry (DNA, RNA) : Parkinson et al. (1996)
Validation Pipeline (wwPDB-VP) : recalc28949

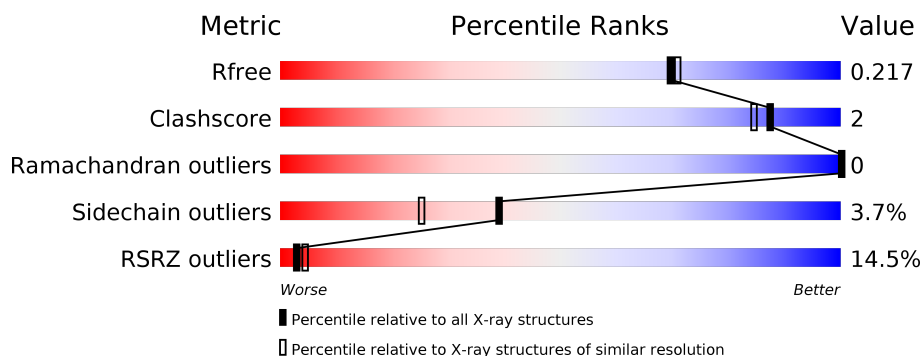
1 Overall quality at a glance

The following experimental techniques were used to determine the structure:

X-RAY DIFFRACTION

The reported resolution of this entry is 1.95 Å.

Percentile scores (ranging between 0-100) for global validation metrics of the entry are shown in the following graphic. The table shows the number of entries on which the scores are based.



Metric	Whole archive (#Entries)	Similar resolution (#Entries, resolution range(Å))
R_{free}	100719	2004 (1.96-1.96)
Clashscore	112137	2136 (1.96-1.96)
Ramachandran outliers	110173	2117 (1.96-1.96)
Sidechain outliers	110143	2117 (1.96-1.96)
RSRZ outliers	101464	2018 (1.96-1.96)

The table below summarises the geometric issues observed across the polymeric chains and their fit to the electron density. The red, orange, yellow and green segments on the lower bar indicate the fraction of residues that contain outliers for ≥ 3 , 2, 1 and 0 types of geometric quality criteria. A grey segment represents the fraction of residues that are not modelled. The numeric value for each fraction is indicated below the corresponding segment, with a dot representing fractions $\leq 5\%$. The upper red bar (where present) indicates the fraction of residues that have poor fit to the electron density. The numeric value is given above the bar.

Mol	Chain	Length	Quality of chain
1	A	444	<div> <div>17%</div> <div> <div></div> <div>85%</div> <div>5% • 9%</div> </div> </div>
1	B	444	<div> <div>9%</div> <div> <div></div> <div>84%</div> <div>5% • 10%</div> </div> </div>

The following table lists non-polymeric compounds, carbohydrate monomers and non-standard residues in protein, DNA, RNA chains that are outliers for geometric or electron-density-fit criteria:

Mol	Type	Chain	Res	Chirality	Geometry	Clashes	Electron density
4	ACT	B	860	-	-	-	X
6	CAD	A	950	-	-	-	X
6	CAD	B	950	-	-	-	X

2 Entry composition [i](#)

There are 9 unique types of molecules in this entry. The entry contains 6911 atoms, of which 0 are hydrogens and 0 are deuteriums.

In the tables below, the ZeroOcc column contains the number of atoms modelled with zero occupancy, the AltConf column contains the number of residues with at least one atom in alternate conformation and the Trace column contains the number of residues modelled with at most 2 atoms.

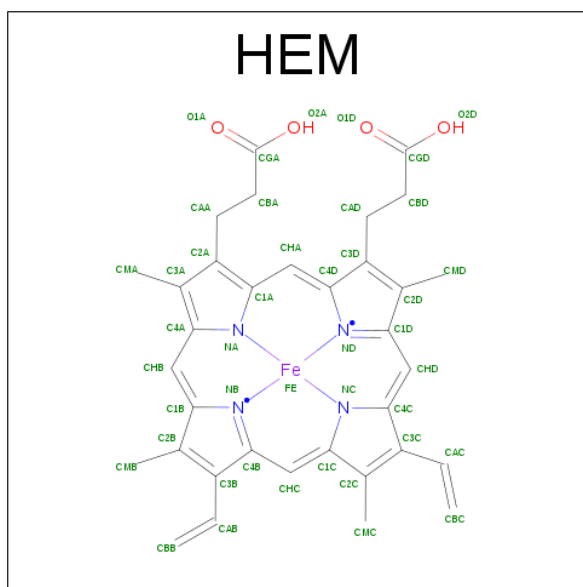
- Molecule 1 is a protein called Nitric oxide synthase, endothelial.

Mol	Chain	Residues	Atoms					ZeroOcc	AltConf	Trace
1	A	404	Total	C	N	O	S	0	1	0
			3218	2046	565	591	16			
1	B	401	Total	C	N	O	S	0	1	0
			3200	2034	562	588	16			

There are 2 discrepancies between the modelled and reference sequences:

Chain	Residue	Modelled	Actual	Comment	Reference
A	100	ARG	CYS	SEE REMARK 999	UNP P29473
B	100	ARG	CYS	SEE REMARK 999	UNP P29473

- Molecule 2 is PROTOPORPHYRIN IX CONTAINING FE (three-letter code: HEM) (formula: $C_{34}H_{32}FeN_4O_4$).



Mol	Chain	Residues	Atoms					ZeroOcc	AltConf
2	A	1	Total	C	Fe	N	O	0	0
			43	34	1	4	4		

Continued on next page...

Continued from previous page...

Mol	Chain	Residues	Atoms					ZeroOcc	AltConf
2	B	1	Total	C	Fe	N	O	0	0
			43	34	1	4	4		

- Molecule 3 is 5,6,7,8-TETRAHYDROBIOPTERIN (three-letter code: H4B) (formula: $C_9H_{15}N_5O_3$).



Mol	Chain	Residues	Atoms				ZeroOcc	AltConf
3	A	1	Total	C	N	O	0	0
			17	9	5	3		
3	B	1	Total	C	N	O	0	0
			17	9	5	3		

- Molecule 4 is ACETATE ION (three-letter code: ACT) (formula: $C_2H_3O_2$).



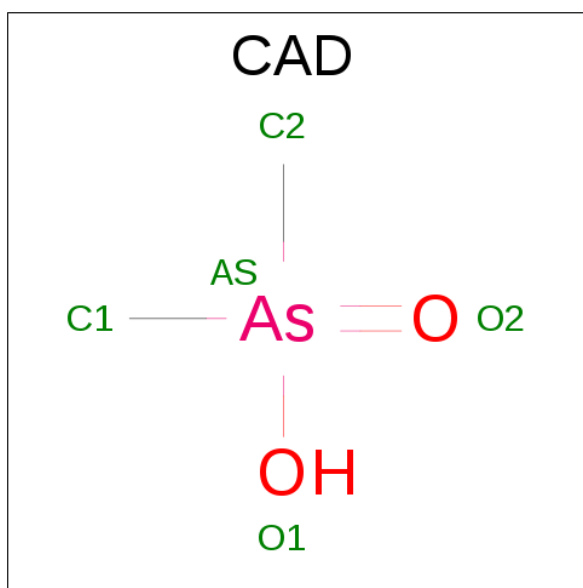
Mol	Chain	Residues	Atoms			ZeroOcc	AltConf
4	A	1	Total	C	O	0	0
			4	2	2		
4	B	1	Total	C	O	0	0
			4	2	2		

- Molecule 5 is GLYCEROL (three-letter code: GOL) (formula: $C_3H_8O_3$).



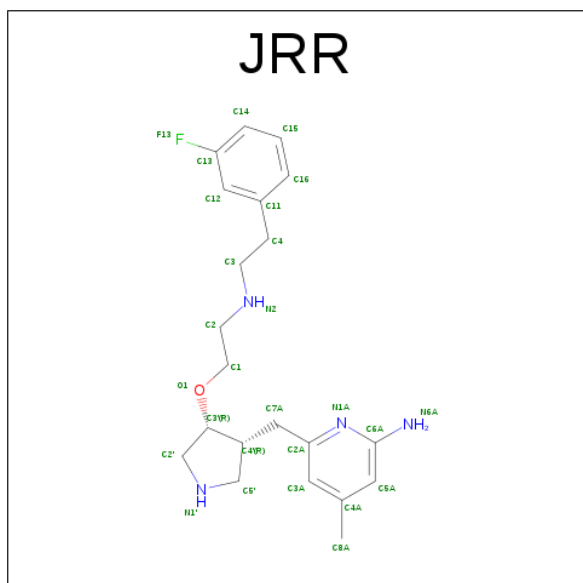
Mol	Chain	Residues	Atoms			ZeroOcc	AltConf
5	A	1	Total	C	O	0	0
			6	3	3		
5	B	1	Total	C	O	0	0
			6	3	3		

- Molecule 6 is CACODYLIC ACID (three-letter code: CAD) (formula: $C_2H_7AsO_2$).



Mol	Chain	Residues	Atoms			ZeroOcc	AltConf
6	A	1	Total	As	C	0	0
			3	1	2		
6	B	1	Total	As	C	0	0
			3	1	2		

- Molecule 7 is 6-[[[(3R,4R)-4-(2-{[2-(3-FLUOROPHENYL)ETHYL]AMINO}ETHOXY)PYRROLIDIN-3-YL]METHYL]-4-METHYLPYRIDIN-2-AMINE (three-letter code: JRR) (formula: $C_{21}H_{29}FN_4O$).



Mol	Chain	Residues	Atoms					ZeroOcc	AltConf
7	A	1	Total	C	F	N	O	0	0
			27	21	1	4	1		
7	B	1	Total	C	F	N	O	0	0
			27	21	1	4	1		

- Molecule 8 is ZINC ION (three-letter code: ZN) (formula: Zn).

Mol	Chain	Residues	Atoms		ZeroOcc	AltConf
8	A	1	Total	Zn	0	0
			1	1		

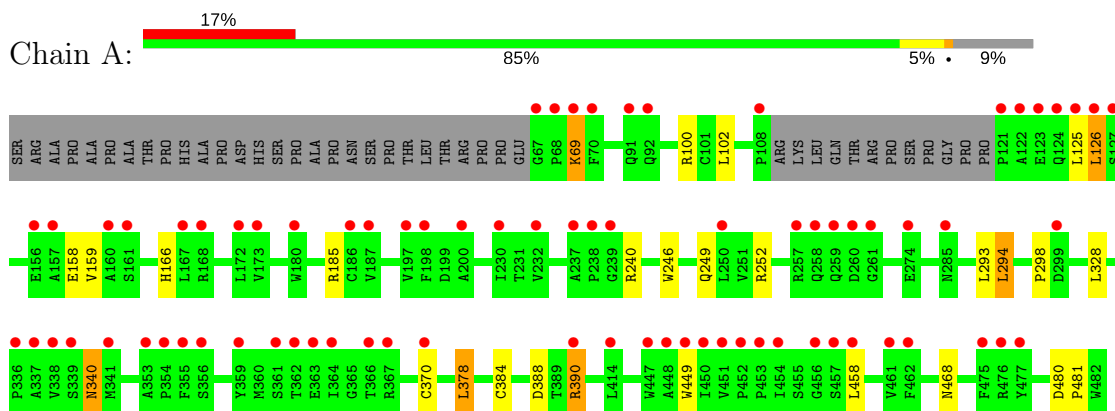
- Molecule 9 is water.

Mol	Chain	Residues	Atoms		ZeroOcc	AltConf
9	A	149	Total	O	0	2
			149	149		
9	B	143	Total	O	0	1
			143	143		

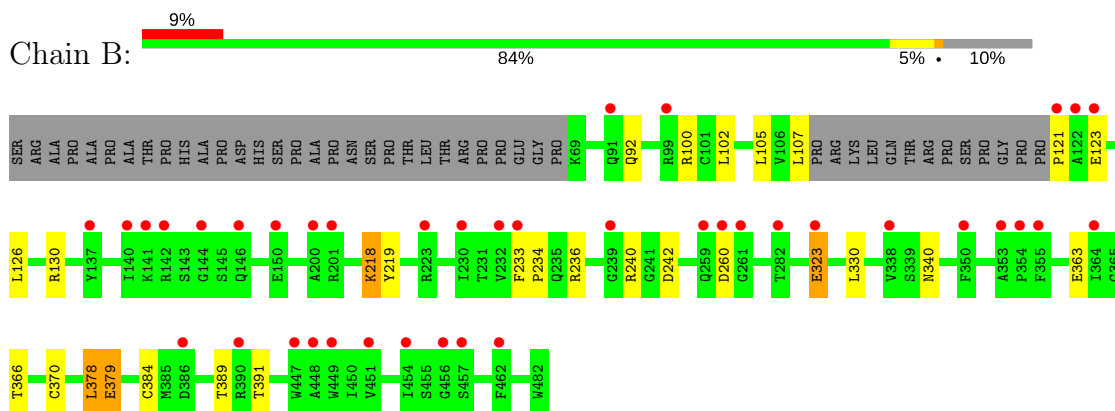
3 Residue-property plots

These plots are drawn for all protein, RNA and DNA chains in the entry. The first graphic for a chain summarises the proportions of the various outlier classes displayed in the second graphic. The second graphic shows the sequence view annotated by issues in geometry and electron density. Residues are color-coded according to the number of geometric quality criteria for which they contain at least one outlier: green = 0, yellow = 1, orange = 2 and red = 3 or more. A red dot above a residue indicates a poor fit to the electron density ($RSRZ > 2$). Stretches of 2 or more consecutive residues without any outlier are shown as a green connector. Residues present in the sample, but not in the model, are shown in grey.

- Molecule 1: Nitric oxide synthase, endothelial



- Molecule 1: Nitric oxide synthase, endothelial



4 Data and refinement statistics

Property	Value	Source
Space group	P 21 21 21	Depositor
Cell constants a, b, c, α , β , γ	58.50Å 107.56Å 158.31Å 90.00° 90.00° 90.00°	Depositor
Resolution (Å)	38.41 – 1.95 38.41 – 1.95	Depositor EDS
% Data completeness (in resolution range)	99.2 (38.41-1.95) 99.2 (38.41-1.95)	Depositor EDS
R_{merge}	0.06	Depositor
R_{sym}	0.06	Depositor
$\langle I/\sigma(I) \rangle$ ¹	2.06 (at 1.95Å)	Xtriage
Refinement program	REFMAC 5.5.0109	Depositor
R, R_{free}	0.184 , 0.206 0.197 , 0.217	Depositor DCC
R_{free} test set	3658 reflections (5.25%)	DCC
Wilson B-factor (Å ²)	47.8	Xtriage
Anisotropy	0.291	Xtriage
Bulk solvent k_{sol} (e/Å ³), B_{sol} (Å ²)	0.35 , 42.9	EDS
L-test for twinning ²	$\langle L \rangle = 0.49$, $\langle L^2 \rangle = 0.33$	Xtriage
Estimated twinning fraction	No twinning to report.	Xtriage
F_o, F_c correlation	0.97	EDS
Total number of atoms	6911	wwPDB-VP
Average B, all atoms (Å ²)	53.0	wwPDB-VP

Xtriage's analysis on translational NCS is as follows: *The largest off-origin peak in the Patterson function is 4.00% of the height of the origin peak. No significant pseudotranslation is detected.*

¹Intensities estimated from amplitudes.

²Theoretical values of $\langle |L| \rangle$, $\langle L^2 \rangle$ for acentric reflections are 0.5, 0.333 respectively for untwinned datasets, and 0.375, 0.2 for perfectly twinned datasets.

5 Model quality [i](#)

5.1 Standard geometry [i](#)

Bond lengths and bond angles in the following residue types are not validated in this section: GOL, ZN, H4B, JRR, ACT, HEM, CAD

The Z score for a bond length (or angle) is the number of standard deviations the observed value is removed from the expected value. A bond length (or angle) with $|Z| > 5$ is considered an outlier worth inspection. RMSZ is the root-mean-square of all Z scores of the bond lengths (or angles).

Mol	Chain	Bond lengths		Bond angles	
		RMSZ	$\# Z > 5$	RMSZ	$\# Z > 5$
1	A	0.57	0/3308	0.61	1/4506 (0.0%)
1	B	0.59	0/3288	0.60	0/4477
All	All	0.58	0/6596	0.61	1/8983 (0.0%)

There are no bond length outliers.

All (1) bond angle outliers are listed below:

Mol	Chain	Res	Type	Atoms	Z	Observed(°)	Ideal(°)
1	A	378	LEU	CA-CB-CG	5.56	128.09	115.30

There are no chirality outliers.

There are no planarity outliers.

5.2 Too-close contacts [i](#)

In the following table, the Non-H and H(model) columns list the number of non-hydrogen atoms and hydrogen atoms in the chain respectively. The H(added) column lists the number of hydrogen atoms added and optimized by MolProbity. The Clashes column lists the number of clashes within the asymmetric unit, whereas Symm-Clashes lists symmetry related clashes.

Mol	Chain	Non-H	H(model)	H(added)	Clashes	Symm-Clashes
1	A	3218	0	3120	14	0
1	B	3200	0	3103	14	0
2	A	43	0	30	1	0
2	B	43	0	30	2	0
3	A	17	0	15	0	0
3	B	17	0	15	0	0
4	A	4	0	3	0	0
4	B	4	0	3	0	0

Continued on next page...

Continued from previous page...

Mol	Chain	Non-H	H(model)	H(added)	Clashes	Symm-Clashes
5	A	6	0	8	0	0
5	B	6	0	8	0	0
6	A	3	0	0	1	0
6	B	3	0	0	1	0
7	A	27	0	29	1	0
7	B	27	0	29	3	0
8	A	1	0	0	0	0
9	A	149	0	0	1	0
9	B	143	0	0	1	0
All	All	6911	0	6393	31	0

The all-atom clashscore is defined as the number of clashes found per 1000 atoms (including hydrogen atoms). The all-atom clashscore for this structure is 2.

All (31) close contacts within the same asymmetric unit are listed below, sorted by their clash magnitude.

Atom-1	Atom-2	Interatomic distance (Å)	Clash overlap (Å)
1:A:384:CYS:SG	6:A:950:CAD:AS	2.75	1.04
1:A:388:ASP:OD1	1:A:390:ARG:HG3	1.79	0.83
2:B:500:HEM:HBA2	7:B:800:JRR:H4	1.76	0.67
1:A:240:ARG:HD3	1:A:298:PRO:HB3	1.81	0.63
1:B:389:THR:O	1:B:389:THR:HG22	2.03	0.58
2:B:500:HEM:HHB	2:B:500:HEM:HBB2	1.86	0.57
1:B:107:LEU:HD21	7:B:800:JRR:H8A	1.86	0.56
1:A:340:ASN:HD22	1:A:340:ASN:H	1.57	0.51
1:A:249:GLN:HB2	1:A:252:ARG:HG3	1.93	0.51
1:B:233:PHE:HB3	1:B:234:PRO:CD	2.42	0.49
1:B:389:THR:O	1:B:389:THR:CG2	2.61	0.49
1:B:121:PRO:HB2	1:B:123:GLU:OE2	2.14	0.48
1:B:363[A]:GLU:OE1	7:B:800:JRR:H16	2.14	0.47
1:A:246:TRP:HB2	1:A:294:LEU:HB3	1.96	0.47
1:A:378:LEU:HB2	9:A:1002:HOH:O	2.14	0.47
1:B:366:THR:O	1:B:370:CYS:HB2	2.15	0.47
1:A:370:CYS:SG	1:A:378:LEU:HD13	2.55	0.46
1:B:384:CYS:SG	6:B:950:CAD:AS	3.35	0.44
1:A:158:GLU:OE1	1:A:166:HIS:HD2	2.00	0.44
1:B:218:LYS:HD3	1:B:219:TYR:N	2.32	0.44
1:B:323:GLU:H	1:B:323:GLU:HG3	1.54	0.43
1:B:370:CYS:SG	1:B:378:LEU:HD13	2.58	0.43
1:B:379:GLU:HB2	9:B:1027:HOH:O	2.18	0.43
1:B:236:ARG:HD2	1:B:242:ASP:OD1	2.18	0.43

Continued on next page...

Continued from previous page...

Atom-1	Atom-2	Interatomic distance (Å)	Clash overlap (Å)
2:A:500:HEM:HBA2	7:A:800:JRR:H4	2.02	0.42
1:B:126:LEU:O	1:B:130:ARG:HG3	2.21	0.41
1:A:69:LYS:HA	1:A:69:LYS:HD2	1.87	0.41
1:A:480:ASP:HA	1:A:481:PRO:HD3	1.86	0.40
1:A:126:LEU:CD2	1:A:159:VAL:HG11	2.51	0.40
1:A:185:ARG:HG2	1:A:449:TRP:CG	2.56	0.40
1:A:340:ASN:HD22	1:A:340:ASN:N	2.20	0.40

There are no symmetry-related clashes.

5.3 Torsion angles [i](#)

5.3.1 Protein backbone [i](#)

In the following table, the Percentiles column shows the percent Ramachandran outliers of the chain as a percentile score with respect to all X-ray entries followed by that with respect to entries of similar resolution.

The Analysed column shows the number of residues for which the backbone conformation was analysed, and the total number of residues.

Mol	Chain	Analysed	Favoured	Allowed	Outliers	Percentiles	
1	A	401/444 (90%)	394 (98%)	7 (2%)	0	100	100
1	B	398/444 (90%)	389 (98%)	9 (2%)	0	100	100
All	All	799/888 (90%)	783 (98%)	16 (2%)	0	100	100

There are no Ramachandran outliers to report.

5.3.2 Protein sidechains [i](#)

In the following table, the Percentiles column shows the percent sidechain outliers of the chain as a percentile score with respect to all X-ray entries followed by that with respect to entries of similar resolution.

The Analysed column shows the number of residues for which the sidechain conformation was analysed, and the total number of residues.

Mol	Chain	Analysed	Rotameric	Outliers	Percentiles	
1	A	344/377 (91%)	332 (96%)	12 (4%)	41	27

Continued on next page...

Continued from previous page...

Mol	Chain	Analysed	Rotameric	Outliers	Percentiles	
1	B	342/377 (91%)	329 (96%)	13 (4%)	38	24
All	All	686/754 (91%)	661 (96%)	25 (4%)	39	26

All (25) residues with a non-rotameric sidechain are listed below:

Mol	Chain	Res	Type
1	A	69	LYS
1	A	100	ARG
1	A	102	LEU
1	A	125	LEU
1	A	126	LEU
1	A	293	LEU
1	A	294	LEU
1	A	328	LEU
1	A	340	ASN
1	A	390	ARG
1	A	458	LEU
1	A	468	ASN
1	B	92	GLN
1	B	100	ARG
1	B	102	LEU
1	B	105	LEU
1	B	218	LYS
1	B	240	ARG
1	B	260	ASP
1	B	323	GLU
1	B	330	LEU
1	B	340	ASN
1	B	378	LEU
1	B	379	GLU
1	B	391	THR

Some sidechains can be flipped to improve hydrogen bonding and reduce clashes. All (13) such sidechains are listed below:

Mol	Chain	Res	Type
1	A	166	HIS
1	A	191	GLN
1	A	340	ASN
1	A	376	ASN
1	A	413	GLN
1	A	468	ASN

Continued on next page...

Continued from previous page...

Mol	Chain	Res	Type
1	B	178	GLN
1	B	191	GLN
1	B	222	ASN
1	B	225	ASN
1	B	340	ASN
1	B	376	ASN
1	B	405	ASN

5.3.3 RNA ⓘ

There are no RNA molecules in this entry.

5.4 Non-standard residues in protein, DNA, RNA chains ⓘ

There are no non-standard protein/DNA/RNA residues in this entry.

5.5 Carbohydrates ⓘ

There are no carbohydrates in this entry.

5.6 Ligand geometry ⓘ

Of 13 ligands modelled in this entry, 1 is monoatomic - leaving 12 for Mogul analysis.

In the following table, the Counts columns list the number of bonds (or angles) for which Mogul statistics could be retrieved, the number of bonds (or angles) that are observed in the model and the number of bonds (or angles) that are defined in the chemical component dictionary. The Link column lists molecule types, if any, to which the group is linked. The Z score for a bond length (or angle) is the number of standard deviations the observed value is removed from the expected value. A bond length (or angle) with $|Z| > 2$ is considered an outlier worth inspection. RMSZ is the root-mean-square of all Z scores of the bond lengths (or angles).

Mol	Type	Chain	Res	Link	Bond lengths			Bond angles		
					Counts	RMSZ	$\# Z > 2$	Counts	RMSZ	$\# Z > 2$
2	HEM	A	500	1	28,50,50	2.22	9 (32%)	17,82,82	1.60	4 (23%)
3	H4B	A	600	-	14,18,18	0.89	0	12,26,26	2.60	5 (41%)
7	JRR	A	800	-	26,29,29	0.71	1 (3%)	31,38,38	1.62	5 (16%)
4	ACT	A	860	-	1,3,3	1.79	0	0,3,3	0.00	-
5	GOL	A	880	-	5,5,5	0.41	0	5,5,5	0.31	0
6	CAD	A	950	-	0,2,4	0.00	-	0,1,6	0.00	-

Mol	Type	Chain	Res	Link	Bond lengths			Bond angles		
					Counts	RMSZ	# Z > 2	Counts	RMSZ	# Z > 2
2	HEM	B	500	1	28,50,50	2.37	12 (42%)	17,82,82	2.23	5 (29%)
3	H4B	B	600	-	14,18,18	0.90	1 (7%)	12,26,26	2.26	4 (33%)
7	JRR	B	800	-	26,29,29	0.66	0	31,38,38	1.58	4 (12%)
4	ACT	B	860	-	1,3,3	1.63	0	0,3,3	0.00	-
5	GOL	B	880	-	5,5,5	0.29	0	5,5,5	0.48	0
6	CAD	B	950	-	0,2,4	0.00	-	0,1,6	0.00	-

In the following table, the Chirals column lists the number of chiral outliers, the number of chiral centers analysed, the number of these observed in the model and the number defined in the chemical component dictionary. Similar counts are reported in the Torsion and Rings columns. '-' means no outliers of that kind were identified.

Mol	Type	Chain	Res	Link	Chirals	Torsions	Rings
2	HEM	A	500	1	-	0/6/54/54	0/0/8/8
3	H4B	A	600	-	-	0/8/17/17	0/2/2/2
7	JRR	A	800	-	-	0/13/23/23	0/3/3/3
4	ACT	A	860	-	-	0/0/0/0	0/0/0/0
5	GOL	A	880	-	-	0/4/4/4	0/0/0/0
6	CAD	A	950	-	-	0/0/0/0	0/0/0/0
2	HEM	B	500	1	-	0/6/54/54	0/0/8/8
3	H4B	B	600	-	-	0/8/17/17	0/2/2/2
7	JRR	B	800	-	-	0/13/23/23	0/3/3/3
4	ACT	B	860	-	-	0/0/0/0	0/0/0/0
5	GOL	B	880	-	-	0/4/4/4	0/0/0/0
6	CAD	B	950	-	-	0/0/0/0	0/0/0/0

All (23) bond length outliers are listed below:

Mol	Chain	Res	Type	Atoms	Z	Observed(Å)	Ideal(Å)
2	B	500	HEM	C3B-C2B	-4.89	1.33	1.40
2	A	500	HEM	C3C-C2C	-4.64	1.34	1.40
2	A	500	HEM	C3B-C2B	-4.10	1.34	1.40
2	B	500	HEM	C3C-C2C	-3.48	1.35	1.40
3	B	600	H4B	C4-C4A	-2.25	1.38	1.41
2	B	500	HEM	C1D-ND	2.02	1.40	1.36
2	B	500	HEM	C1C-NC	2.04	1.39	1.36
2	A	500	HEM	C4A-NA	2.05	1.40	1.36
7	A	800	JRR	C14-C13	2.10	1.41	1.37
2	B	500	HEM	CMA-C3A	2.11	1.55	1.51
2	A	500	HEM	C4C-NC	2.12	1.39	1.36
2	B	500	HEM	CMB-C2B	2.13	1.56	1.51
2	B	500	HEM	CMD-C2D	2.14	1.56	1.51

Continued on next page...

Continued from previous page...

Mol	Chain	Res	Type	Atoms	Z	Observed(Å)	Ideal(Å)
2	A	500	HEM	CMA-C3A	2.52	1.56	1.51
2	B	500	HEM	CAA-C2A	2.53	1.56	1.52
2	A	500	HEM	C4D-ND	2.85	1.40	1.36
2	A	500	HEM	C3C-CAC	3.22	1.54	1.47
2	A	500	HEM	C3B-CAB	3.50	1.54	1.47
2	B	500	HEM	C3C-CAC	3.83	1.55	1.47
2	B	500	HEM	C4D-ND	3.89	1.41	1.36
2	B	500	HEM	C3B-CAB	3.92	1.55	1.47
2	B	500	HEM	C3D-C2D	5.10	1.52	1.37
2	A	500	HEM	C3D-C2D	5.24	1.53	1.37

All (27) bond angle outliers are listed below:

Mol	Chain	Res	Type	Atoms	Z	Observed(°)	Ideal(°)
2	B	500	HEM	CBA-CAA-C2A	-5.79	101.41	112.48
2	B	500	HEM	CBD-CAD-C3D	-4.01	104.81	112.47
3	A	600	H4B	N3-C2-N1	-3.97	119.01	125.45
2	A	500	HEM	CBD-CAD-C3D	-3.30	106.16	112.47
2	A	500	HEM	CBA-CAA-C2A	-3.21	106.34	112.48
2	B	500	HEM	CMA-C3A-C4A	-2.99	123.86	128.46
3	B	600	H4B	N3-C2-N1	-2.98	120.62	125.45
7	B	800	JRR	C3A-C2A-N1A	-2.87	119.80	122.91
7	A	800	JRR	C14-C13-C12	-2.68	119.78	123.29
7	A	800	JRR	C3A-C2A-N1A	-2.45	120.26	122.91
2	A	500	HEM	C1D-C2D-C3D	-2.28	105.41	107.00
7	B	800	JRR	C14-C13-C12	-2.17	120.45	123.29
7	A	800	JRR	N6A-C6A-N1A	2.15	120.26	116.64
3	A	600	H4B	N2-C2-N1	2.27	120.86	117.24
3	B	600	H4B	C2-N1-C8A	2.33	119.77	114.51
2	A	500	HEM	CAA-CBA-CGA	2.41	116.77	112.66
2	B	500	HEM	CAD-CBD-CGD	2.42	116.80	112.66
3	A	600	H4B	C2-N1-C8A	2.74	120.68	114.51
2	B	500	HEM	C4A-C3A-C2A	2.77	108.92	107.00
7	A	800	JRR	C5'-N1'-C2'	3.14	112.71	105.40
7	B	800	JRR	C5'-N1'-C2'	3.51	113.58	105.40
3	B	600	H4B	C4-N3-C2	3.71	121.40	116.06
3	A	600	H4B	C4-C4A-C8A	3.73	117.94	114.56
3	B	600	H4B	C4-C4A-C8A	4.68	118.80	114.56
7	A	800	JRR	C6A-N1A-C2A	5.01	121.71	118.17
3	A	600	H4B	C4-N3-C2	5.02	123.28	116.06
7	B	800	JRR	C6A-N1A-C2A	5.49	122.05	118.17

There are no chirality outliers.

There are no torsion outliers.

There are no ring outliers.

6 monomers are involved in 7 short contacts:

Mol	Chain	Res	Type	Clashes	Symm-Clashes
2	A	500	HEM	1	0
7	A	800	JRR	1	0
6	A	950	CAD	1	0
2	B	500	HEM	2	0
7	B	800	JRR	3	0
6	B	950	CAD	1	0

5.7 Other polymers [i](#)

There are no such residues in this entry.

5.8 Polymer linkage issues [i](#)

There are no chain breaks in this entry.

6 Fit of model and data

6.1 Protein, DNA and RNA chains

In the following table, the column labelled ‘#RSRZ > 2’ contains the number (and percentage) of RSRZ outliers, followed by percent RSRZ outliers for the chain as percentile scores relative to all X-ray entries and entries of similar resolution. The OWAB column contains the minimum, median, 95th percentile and maximum values of the occupancy-weighted average B-factor per residue. The column labelled ‘Q < 0.9’ lists the number of (and percentage) of residues with an average occupancy less than 0.9.

Mol	Chain	Analysed	<RSRZ>	#RSRZ>2	OWAB(Å ²)	Q<0.9
1	A	404/444 (90%)	0.90	77 (19%) 1 1	41, 50, 69, 85	0
1	B	401/444 (90%)	0.65	40 (9%) 8 13	40, 53, 71, 83	0
All	All	805/888 (90%)	0.77	117 (14%) 3 4	40, 52, 70, 85	0

All (117) RSRZ outliers are listed below:

Mol	Chain	Res	Type	RSRZ
1	A	239	GLY	9.5
1	A	67	GLY	6.3
1	A	259	GLN	5.9
1	A	121	PRO	5.6
1	A	125	LEU	4.7
1	A	454	ILE	4.6
1	A	108	PRO	4.5
1	B	121	PRO	4.4
1	B	259	GLN	4.4
1	A	364	ILE	4.4
1	A	450	ILE	4.4
1	B	122	ALA	4.3
1	A	338	VAL	4.3
1	A	355	PHE	4.2
1	A	260	ASP	4.2
1	A	337	ALA	4.2
1	A	123	GLU	4.1
1	A	449	TRP	4.1
1	A	91	GLN	4.0
1	A	69	LYS	4.0
1	A	124	GLN	3.9
1	A	156	GLU	3.8
1	B	260	ASP	3.7
1	B	142	ARG	3.7

Continued on next page...

Continued from previous page...

Mol	Chain	Res	Type	RSRZ
1	A	160	ALA	3.6
1	A	126	LEU	3.6
1	A	68	PRO	3.6
1	A	362	THR	3.6
1	A	451	VAL	3.6
1	A	122	ALA	3.5
1	B	451	VAL	3.5
1	B	123	GLU	3.5
1	B	146	GLN	3.5
1	A	172	LEU	3.5
1	A	186	CYS	3.4
1	A	261	GLY	3.3
1	A	452	PRO	3.3
1	B	239	GLY	3.3
1	A	70	PHE	3.3
1	B	233	PHE	3.2
1	A	353	ALA	3.2
1	A	453	PRO	3.2
1	A	359	TYR	3.2
1	A	363[A]	GLU	3.1
1	B	200	ALA	3.1
1	B	448	ALA	3.1
1	A	448	ALA	3.1
1	B	454	ILE	3.1
1	A	390	ARG	3.0
1	A	257	ARG	3.0
1	A	200	ALA	3.0
1	B	447	TRP	3.0
1	A	187	VAL	3.0
1	B	323	GLU	2.9
1	A	92	GLN	2.9
1	A	447	TRP	2.9
1	B	137	TYR	2.9
1	B	150	GLU	2.9
1	B	386	ASP	2.9
1	A	285	ASN	2.9
1	B	140	ILE	2.9
1	A	198	PHE	2.8
1	A	477	TYR	2.8
1	B	390	ARG	2.8
1	A	476	ARG	2.7
1	B	223	ARG	2.7

Continued on next page...

Continued from previous page...

Mol	Chain	Res	Type	RSRZ
1	B	232	VAL	2.7
1	A	457	SER	2.7
1	A	367	ARG	2.7
1	A	232	VAL	2.7
1	A	230	ILE	2.6
1	A	336	PRO	2.6
1	A	354	PRO	2.6
1	A	238	PRO	2.6
1	B	91	GLN	2.6
1	B	230	ILE	2.6
1	B	354	PRO	2.6
1	B	456	GLY	2.5
1	B	462	PHE	2.5
1	B	141	LYS	2.5
1	A	157	ALA	2.5
1	A	462	PHE	2.5
1	A	341	MET	2.5
1	A	414	LEU	2.5
1	A	161	SER	2.5
1	A	339	SER	2.5
1	B	364	ILE	2.4
1	A	461	VAL	2.4
1	B	449	TRP	2.4
1	A	167	LEU	2.3
1	B	99	ARG	2.3
1	B	355	PHE	2.3
1	B	338	VAL	2.3
1	A	475	PHE	2.3
1	A	458	LEU	2.3
1	A	274	GLU	2.3
1	A	168	ARG	2.3
1	A	250	LEU	2.2
1	A	180	TRP	2.2
1	A	361	SER	2.2
1	A	456	GLY	2.2
1	A	237	ALA	2.2
1	A	299	ASP	2.2
1	B	353	ALA	2.2
1	A	173	VAL	2.2
1	A	197	VAL	2.1
1	A	370	CYS	2.1
1	A	366	THR	2.1

Continued on next page...

Continued from previous page...

Mol	Chain	Res	Type	RSRZ
1	B	144	GLY	2.1
1	A	127	SER	2.1
1	B	350	PHE	2.1
1	B	261	GLY	2.1
1	B	282	THR	2.1
1	B	457	SER	2.0
1	A	258	GLN	2.0
1	A	356	SER	2.0
1	B	201	ARG	2.0

6.2 Non-standard residues in protein, DNA, RNA chains [i](#)

There are no non-standard protein/DNA/RNA residues in this entry.

6.3 Carbohydrates [i](#)

There are no carbohydrates in this entry.

6.4 Ligands [i](#)

In the following table, the Atoms column lists the number of modelled atoms in the group and the number defined in the chemical component dictionary. LLDF column lists the quality of electron density of the group with respect to its neighbouring residues in protein, DNA or RNA chains. The B-factors column lists the minimum, median, 95th percentile and maximum values of B factors of atoms in the group. The column labelled 'Q < 0.9' lists the number of atoms with occupancy less than 0.9.

Mol	Type	Chain	Res	Atoms	RSCC	RSR	LLDF	B-factors(Å ²)	Q<0.9
4	ACT	B	860	4/4	0.96	0.48	20.31	67,68,68,69	0
6	CAD	B	950	3/5	0.70	0.51	11.57	176,176,176,176	0
6	CAD	A	950	3/5	0.96	0.22	4.07	102,102,103,103	0
5	GOL	A	880	6/6	0.86	0.30	1.70	72,73,73,74	0
5	GOL	B	880	6/6	0.84	0.21	1.53	61,64,64,65	0
4	ACT	A	860	4/4	0.94	0.18	1.16	61,63,64,65	0
3	H4B	A	600	17/17	0.96	0.23	0.70	41,43,48,48	0
2	HEM	B	500	43/43	0.98	0.18	0.66	39,43,50,51	0
7	JRR	B	800	27/27	0.90	0.20	0.65	52,55,56,57	0
3	H4B	B	600	17/17	0.96	0.19	0.48	39,43,47,48	0
2	HEM	A	500	43/43	0.98	0.24	0.40	39,43,48,50	0
8	ZN	A	900	1/1	0.99	0.11	0.37	44,44,44,44	0

Continued on next page...

Continued from previous page...

Mol	Type	Chain	Res	Atoms	RSCC	RSR	LLDF	B-factors(\AA^2)	Q<0.9
7	JRR	A	800	27/27	0.87	0.25	0.21	51,54,55,56	0

6.5 Other polymers [i](#)

There are no such residues in this entry.