



Full wwPDB X-ray Structure Validation Report ⓘ

Feb 14, 2017 – 03:38 am GMT

PDB ID : 1NMM
Title : beta-1,4-galactosyltransferase mutant Cys342Thr complex with alpha-lactalbumin and GlcNAc
Authors : Ramakrishnan, B.; Shah, P.S.; Qasba, P.K.
Deposited on : 2003-01-10
Resolution : 2.00 Å(reported)

This is a Full wwPDB X-ray Structure Validation Report for a publicly released PDB entry.

We welcome your comments at validation@mail.wwpdb.org

A user guide is available at

<http://wwpdb.org/validation/2016/XrayValidationReportHelp>

with specific help available everywhere you see the ⓘ symbol.

The following versions of software and data (see [references ⓘ](#)) were used in the production of this report:

MolProbity : 4.02b-467
Mogul : 1.7.2 (RC1), CSD as538be (2017)
Xtriage (Phenix) : 1.9-1692
EDS : trunk28620
Percentile statistics : 20161228.v01 (using entries in the PDB archive December 28th 2016)
Refmac : 5.8.0135
CCP4 : 6.5.0
Ideal geometry (proteins) : Engh & Huber (2001)
Ideal geometry (DNA, RNA) : Parkinson et al. (1996)
Validation Pipeline (wwPDB-VP) : recalc28949

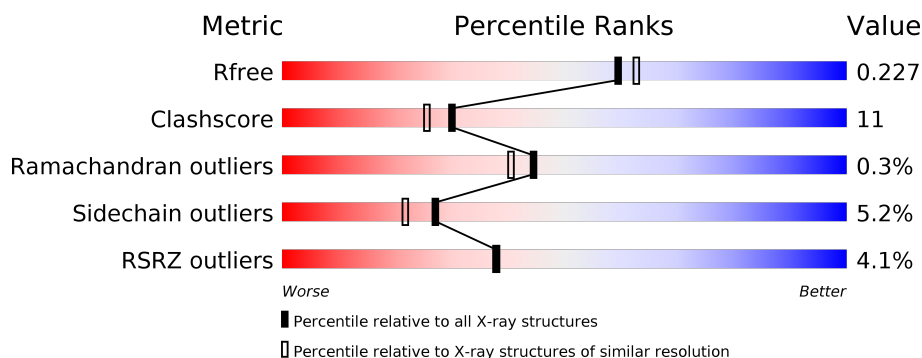
1 Overall quality at a glance

The following experimental techniques were used to determine the structure:

X-RAY DIFFRACTION

The reported resolution of this entry is 2.00 Å.

Percentile scores (ranging between 0-100) for global validation metrics of the entry are shown in the following graphic. The table shows the number of entries on which the scores are based.



Metric	Whole archive (#Entries)	Similar resolution (#Entries, resolution range(Å))
R_{free}	100719	6609 (2.00-2.00)
Clashscore	112137	7775 (2.00-2.00)
Ramachandran outliers	110173	7679 (2.00-2.00)
Sidechain outliers	110143	7678 (2.00-2.00)
RSRZ outliers	101464	6696 (2.00-2.00)

The table below summarises the geometric issues observed across the polymeric chains and their fit to the electron density. The red, orange, yellow and green segments on the lower bar indicate the fraction of residues that contain outliers for ≥ 3 , 2, 1 and 0 types of geometric quality criteria. A grey segment represents the fraction of residues that are not modelled. The numeric value for each fraction is indicated below the corresponding segment, with a dot representing fractions $\leq 5\%$. The upper red bar (where present) indicates the fraction of residues that have poor fit to the electron density. The numeric value is given above the bar.

Mol	Chain	Length	Quality of chain
1	A	123	<div> <div>4%</div> <div>82%</div> <div>17%</div> <div>•</div> </div>
1	C	123	<div> <div>3%</div> <div>79%</div> <div>20%</div> <div>•</div> </div>
2	B	286	<div> <div>4%</div> <div>76%</div> <div>16%</div> <div>• 5%</div> </div>
2	D	286	<div> <div>4%</div> <div>74%</div> <div>19%</div> <div>• 5%</div> </div>

The following table lists non-polymeric compounds, carbohydrate monomers and non-standard residues in protein, DNA, RNA chains that are outliers for geometric or electron-density-fit crite-

ria:

Mol	Type	Chain	Res	Chirality	Geometry	Clashes	Electron density
5	PG4	D	528	-	-	-	X
5	PG4	D	529	-	-	-	X

2 Entry composition

There are 6 unique types of molecules in this entry. The entry contains 7232 atoms, of which 0 are hydrogens and 0 are deuteriums.

In the tables below, the ZeroOcc column contains the number of atoms modelled with zero occupancy, the AltConf column contains the number of residues with at least one atom in alternate conformation and the Trace column contains the number of residues modelled with at most 2 atoms.

- Molecule 1 is a protein called ALPHA-LACTALBUMIN.

Mol	Chain	Residues	Atoms					ZeroOcc	AltConf	Trace
1	A	123	Total	C	N	O	S	0	0	0
			980	620	156	195	9			
1	C	123	Total	C	N	O	S	0	0	0
			980	620	156	195	9			

- Molecule 2 is a protein called BETA-1,4-GALACTOSYLTRANSFERASE.

Mol	Chain	Residues	Atoms					ZeroOcc	AltConf	Trace
2	B	272	Total	C	N	O	S	0	0	0
			2219	1425	382	399	13			
2	D	272	Total	C	N	O	S	0	0	0
			2219	1425	382	399	13			

There are 28 discrepancies between the modelled and reference sequences:

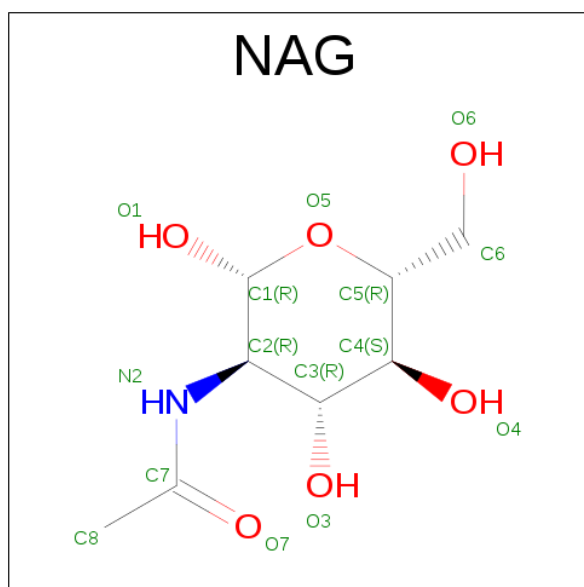
Chain	Residue	Modelled	Actual	Comment	Reference
B	117	ALA	-	SEE REMARK 999	UNP P08037
B	118	SER	-	SEE REMARK 999	UNP P08037
B	119	MET	-	SEE REMARK 999	UNP P08037
B	120	THR	-	SEE REMARK 999	UNP P08037
B	121	GLY	-	SEE REMARK 999	UNP P08037
B	122	GLY	-	SEE REMARK 999	UNP P08037
B	123	GLN	-	SEE REMARK 999	UNP P08037
B	124	GLN	-	SEE REMARK 999	UNP P08037
B	125	MET	-	SEE REMARK 999	UNP P08037
B	126	GLY	-	SEE REMARK 999	UNP P08037
B	127	ARG	-	SEE REMARK 999	UNP P08037
B	128	GLY	-	SEE REMARK 999	UNP P08037
B	129	SER	-	SEE REMARK 999	UNP P08037
B	342	THR	CYS	ENGINEERED	UNP P08037
D	117	ALA	-	SEE REMARK 999	UNP P08037
D	118	SER	-	SEE REMARK 999	UNP P08037

Continued on next page...

Continued from previous page...

Chain	Residue	Modelled	Actual	Comment	Reference
D	119	MET	-	SEE REMARK 999	UNP P08037
D	120	THR	-	SEE REMARK 999	UNP P08037
D	121	GLY	-	SEE REMARK 999	UNP P08037
D	122	GLY	-	SEE REMARK 999	UNP P08037
D	123	GLN	-	SEE REMARK 999	UNP P08037
D	124	GLN	-	SEE REMARK 999	UNP P08037
D	125	MET	-	SEE REMARK 999	UNP P08037
D	126	GLY	-	SEE REMARK 999	UNP P08037
D	127	ARG	-	SEE REMARK 999	UNP P08037
D	128	GLY	-	SEE REMARK 999	UNP P08037
D	129	SER	-	SEE REMARK 999	UNP P08037
D	342	THR	CYS	ENGINEERED	UNP P08037

- Molecule 3 is SUGAR (N-ACETYL-D-GLUCOSAMINE) (three-letter code: NAG) (formula: $C_8H_{15}NO_6$).

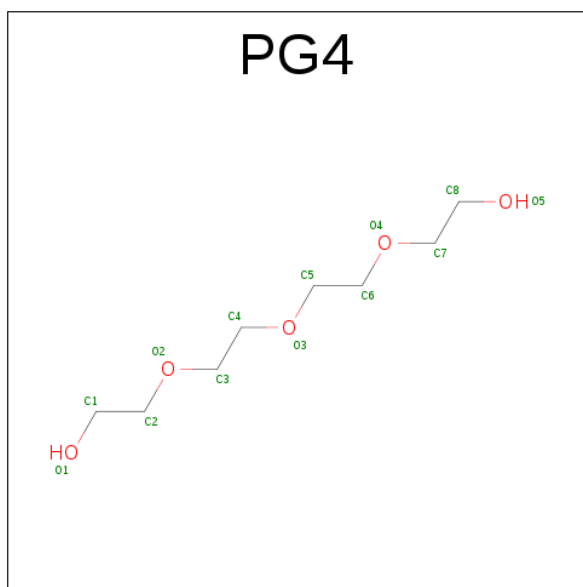


Mol	Chain	Residues	Atoms				ZeroOcc	AltConf
3	B	1	Total	C	N	O	0	0
			15	8	1	6		
3	D	1	Total	C	N	O	0	0
			15	8	1	6		

- Molecule 4 is CALCIUM ION (three-letter code: CA) (formula: Ca).

Mol	Chain	Residues	Atoms	ZeroOcc	AltConf
4	A	1	Total Ca 1 1	0	0
4	C	1	Total Ca 1 1	0	0

- Molecule 5 is TETRAETHYLENE GLYCOL (three-letter code: PG4) (formula: C₈H₁₈O₅).



Mol	Chain	Residues	Atoms	ZeroOcc	AltConf
5	D	1	Total C O 10 6 4	0	0
5	D	1	Total C O 10 6 4	0	0

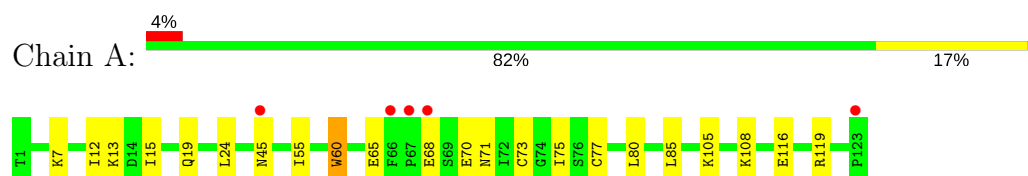
- Molecule 6 is water.

Mol	Chain	Residues	Atoms	ZeroOcc	AltConf
6	A	123	Total O 123 123	0	0
6	B	265	Total O 265 265	0	0
6	C	141	Total O 141 141	0	0
6	D	253	Total O 253 253	0	0

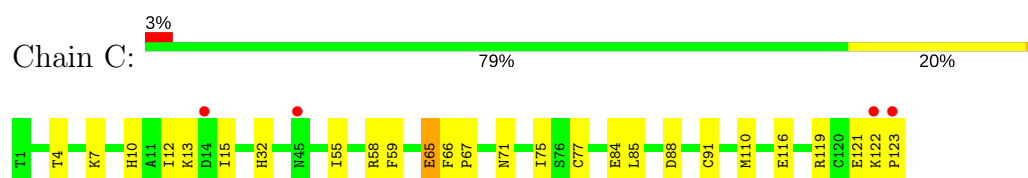
3 Residue-property plots [i](#)

These plots are drawn for all protein, RNA and DNA chains in the entry. The first graphic for a chain summarises the proportions of the various outlier classes displayed in the second graphic. The second graphic shows the sequence view annotated by issues in geometry and electron density. Residues are color-coded according to the number of geometric quality criteria for which they contain at least one outlier: green = 0, yellow = 1, orange = 2 and red = 3 or more. A red dot above a residue indicates a poor fit to the electron density ($RSRZ > 2$). Stretches of 2 or more consecutive residues without any outlier are shown as a green connector. Residues present in the sample, but not in the model, are shown in grey.

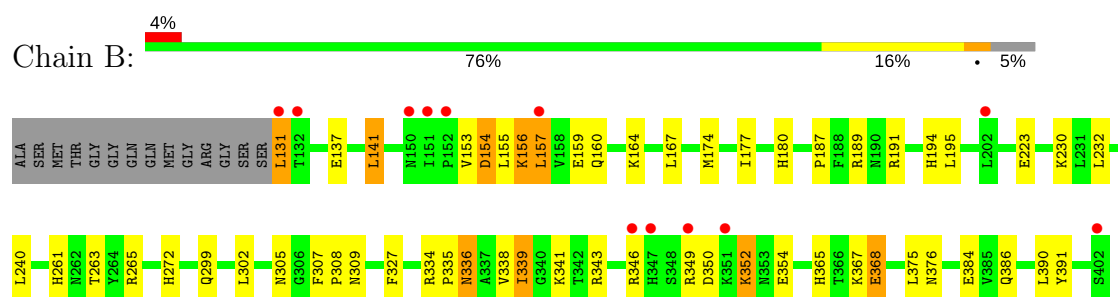
- Molecule 1: ALPHA-LACTALBUMIN



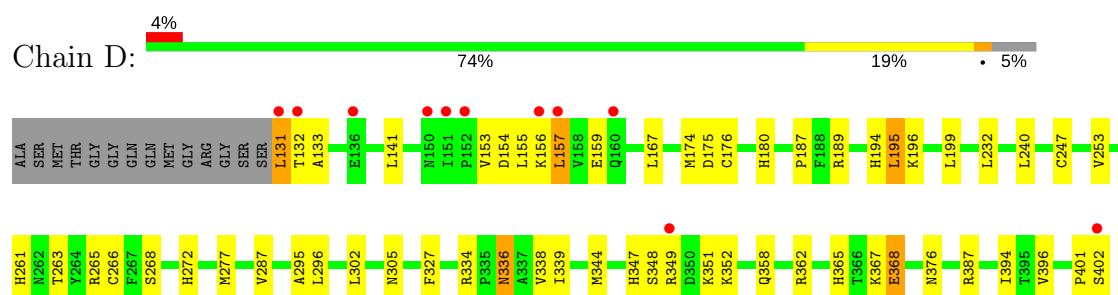
- Molecule 1: ALPHA-LACTALBUMIN



- Molecule 2: BETA-1,4-GALACTOSYLTRANSFERASE



- Molecule 2: BETA-1,4-GALACTOSYLTRANSFERASE



4 Data and refinement statistics

Property	Value	Source
Space group	P 1 21 1	Depositor
Cell constants a, b, c, α , β , γ	57.02Å 95.63Å 100.21Å 90.00° 101.37° 90.00°	Depositor
Resolution (Å)	24.72 – 2.00 24.72 – 1.99	Depositor EDS
% Data completeness (in resolution range)	99.0 (24.72-2.00) 98.5 (24.72-1.99)	Depositor EDS
R_{merge}	(Not available)	Depositor
R_{sym}	0.08	Depositor
$\langle I/\sigma(I) \rangle$ ¹	1.96 (at 1.99Å)	Xtriage
Refinement program	CNS 1.0	Depositor
R, R_{free}	0.189 , 0.229 0.186 , 0.227	Depositor DCC
R_{free} test set	7133 reflections (11.26%)	DCC
Wilson B-factor (Å ²)	24.9	Xtriage
Anisotropy	0.209	Xtriage
Bulk solvent k_{sol} (e/Å ³), B_{sol} (Å ²)	0.32 , 53.2	EDS
L-test for twinning ²	$\langle L \rangle = 0.49$, $\langle L^2 \rangle = 0.32$	Xtriage
Estimated twinning fraction	No twinning to report.	Xtriage
F_o, F_c correlation	0.95	EDS
Total number of atoms	7232	wwPDB-VP
Average B, all atoms (Å ²)	30.0	wwPDB-VP

Xtriage's analysis on translational NCS is as follows: *The largest off-origin peak in the Patterson function is 5.47% of the height of the origin peak. No significant pseudotranslation is detected.*

¹Intensities estimated from amplitudes.

²Theoretical values of $\langle |L| \rangle$, $\langle L^2 \rangle$ for acentric reflections are 0.5, 0.333 respectively for untwinned datasets, and 0.375, 0.2 for perfectly twinned datasets.

5 Model quality [i](#)

5.1 Standard geometry [i](#)

Bond lengths and bond angles in the following residue types are not validated in this section: PG4, CA, NAG

The Z score for a bond length (or angle) is the number of standard deviations the observed value is removed from the expected value. A bond length (or angle) with $|Z| > 5$ is considered an outlier worth inspection. RMSZ is the root-mean-square of all Z scores of the bond lengths (or angles).

Mol	Chain	Bond lengths		Bond angles	
		RMSZ	$\# Z > 5$	RMSZ	$\# Z > 5$
1	A	0.49	0/1001	0.72	1/1350 (0.1%)
1	C	0.54	0/1001	0.77	0/1350
2	B	0.49	0/2279	0.71	0/3087
2	D	0.51	0/2279	0.73	0/3087
All	All	0.51	0/6560	0.73	1/8874 (0.0%)

There are no bond length outliers.

All (1) bond angle outliers are listed below:

Mol	Chain	Res	Type	Atoms	Z	Observed(°)	Ideal(°)
1	A	60	TRP	N-CA-C	5.05	124.63	111.00

There are no chirality outliers.

There are no planarity outliers.

5.2 Too-close contacts [i](#)

In the following table, the Non-H and H(model) columns list the number of non-hydrogen atoms and hydrogen atoms in the chain respectively. The H(added) column lists the number of hydrogen atoms added and optimized by MolProbity. The Clashes column lists the number of clashes within the asymmetric unit, whereas Symm-Clashes lists symmetry related clashes.

Mol	Chain	Non-H	H(model)	H(added)	Clashes	Symm-Clashes
1	A	980	0	936	14	0
1	C	980	0	936	21	0
2	B	2219	0	2187	49	0
2	D	2219	0	2187	52	0
3	B	15	0	15	0	0
3	D	15	0	15	1	0

Continued on next page...

Continued from previous page...

Mol	Chain	Non-H	H(model)	H(added)	Clashes	Symm-Clashes
4	A	1	0	0	0	0
4	C	1	0	0	0	0
5	D	20	0	26	5	0
6	A	123	0	0	5	0
6	B	265	0	0	6	0
6	C	141	0	0	1	0
6	D	253	0	0	7	0
All	All	7232	0	6302	135	0

The all-atom clashscore is defined as the number of clashes found per 1000 atoms (including hydrogen atoms). The all-atom clashscore for this structure is 11.

All (135) close contacts within the same asymmetric unit are listed below, sorted by their clash magnitude.

Atom-1	Atom-2	Interatomic distance (Å)	Clash overlap (Å)
1:C:122:LYS:HD3	1:C:123:PRO:HD2	1.26	1.14
1:A:71:ASN:HD21	1:A:75:ILE:H	1.15	0.94
1:C:122:LYS:HD3	1:C:123:PRO:CD	2.06	0.84
1:C:71:ASN:HD21	1:C:75:ILE:H	1.26	0.83
1:A:77:CYS:HB2	6:A:1002:HOH:O	1.80	0.81
2:D:305:ASN:HD21	2:D:376:ASN:H	1.32	0.76
2:B:299:GLN:HG3	6:B:982:HOH:O	1.84	0.76
2:B:336:ASN:HD22	2:B:338:VAL:H	1.33	0.75
1:C:10:HIS:HA	1:C:13:LYS:HE2	1.68	0.74
1:C:4:THR:HG23	1:C:7:LYS:HE2	1.71	0.73
2:D:268:SER:H	5:D:528:PG4:H31	1.53	0.72
2:B:305:ASN:HD21	2:B:376:ASN:H	1.36	0.72
1:A:45:ASN:HB2	6:B:1158:HOH:O	1.90	0.72
2:D:153:VAL:CG2	2:D:196:LYS:HB3	2.20	0.71
2:D:167:LEU:HD11	2:D:387:ARG:HB3	1.73	0.71
1:C:65:GLU:O	1:C:67:PRO:HD3	1.90	0.71
2:B:349:ARG:HG2	2:B:349:ARG:HH11	1.57	0.70
2:B:155:LEU:O	2:B:159:GLU:HG3	1.92	0.70
1:C:77:CYS:HB2	6:C:938:HOH:O	1.92	0.69
1:A:13:LYS:HE3	6:A:1063:HOH:O	1.91	0.69
1:C:122:LYS:CD	1:C:123:PRO:HD2	2.16	0.68
2:B:336:ASN:ND2	2:B:338:VAL:H	1.92	0.67
2:D:131:LEU:HD22	2:D:176:CYS:HA	1.76	0.67
1:C:4:THR:H	1:C:7:LYS:CE	2.08	0.67
2:D:132:THR:HG22	2:D:133:ALA:H	1.58	0.66
2:B:349:ARG:HD3	2:B:350:ASP:N	2.11	0.65

Continued on next page...

Continued from previous page...

Atom-1	Atom-2	Interatomic distance (Å)	Clash overlap (Å)
1:C:4:THR:H	1:C:7:LYS:HE3	1.62	0.64
2:D:336:ASN:HD22	2:D:338:VAL:H	1.47	0.63
2:B:327:PHE:CZ	2:B:367:LYS:HB2	2.36	0.61
2:D:265:ARG:HH22	5:D:528:PG4:H21	1.66	0.60
2:D:154:ASP:OD1	2:D:156:LYS:HB2	2.01	0.60
2:D:268:SER:N	5:D:528:PG4:H31	2.16	0.59
2:D:132:THR:HG22	2:D:133:ALA:N	2.16	0.59
2:D:131:LEU:HD21	2:D:175:ASP:O	2.04	0.58
2:D:167:LEU:HD13	2:D:167:LEU:C	2.24	0.58
2:B:349:ARG:HD3	2:B:350:ASP:H	1.68	0.58
1:C:10:HIS:O	1:C:13:LYS:HG2	2.04	0.57
2:D:347:HIS:CD2	2:D:348:SER:N	2.72	0.57
1:A:68:GLU:HG2	1:A:68:GLU:O	2.05	0.56
1:A:65:GLU:HB2	6:A:1264:HOH:O	2.05	0.56
2:B:336:ASN:HD22	2:B:336:ASN:C	2.08	0.56
2:B:154:ASP:OD1	2:B:156:LYS:HB2	2.06	0.55
2:B:272:HIS:HB3	2:B:334:ARG:HG2	1.89	0.55
2:D:358:GLN:OE1	2:D:362:ARG:NH1	2.39	0.55
1:A:105:LYS:HD3	6:A:1326:HOH:O	2.07	0.54
2:B:336:ASN:HD22	2:B:338:VAL:N	2.03	0.54
2:D:349:ARG:HD2	6:D:1032:HOH:O	2.06	0.54
2:D:349:ARG:HG3	6:D:1581:HOH:O	2.09	0.53
2:D:180:HIS:CE1	2:D:265:ARG:HD2	2.44	0.53
2:B:187:PRO:HD3	2:B:232:LEU:HD21	1.91	0.53
2:D:295:ALA:C	2:D:296:LEU:HD12	2.30	0.52
2:B:223:GLU:OE2	2:B:352:LYS:NZ	2.41	0.52
2:D:167:LEU:CD1	2:D:387:ARG:HB3	2.37	0.52
2:D:187:PRO:HD3	2:D:232:LEU:CD2	2.40	0.51
2:B:174:MET:HG2	6:B:1180:HOH:O	2.11	0.51
2:D:187:PRO:HD3	2:D:232:LEU:HD21	1.93	0.50
2:B:180:HIS:CE1	2:B:265:ARG:HD3	2.47	0.50
2:B:191:ARG:HG2	2:B:191:ARG:HH11	1.77	0.49
1:C:116:GLU:OE2	1:C:119:ARG:HD2	2.12	0.49
2:D:195:LEU:HD22	2:D:199:LEU:HG	1.94	0.49
2:D:131:LEU:CD2	2:D:176:CYS:HA	2.43	0.49
1:C:32:HIS:HD2	3:D:527:NAG:O1	1.96	0.49
2:B:335:PRO:HB2	2:B:339:ILE:HG12	1.94	0.48
2:D:347:HIS:HD2	2:D:348:SER:N	2.11	0.48
2:B:141:LEU:HD23	2:B:261:HIS:CD2	2.48	0.48
2:B:153:VAL:HG12	2:B:154:ASP:N	2.28	0.48
2:B:336:ASN:ND2	2:B:339:ILE:H	2.11	0.48

Continued on next page...

Continued from previous page...

Atom-1	Atom-2	Interatomic distance (Å)	Clash overlap (Å)
2:B:336:ASN:ND2	2:B:339:ILE:HG23	2.28	0.48
2:D:347:HIS:CD2	2:D:348:SER:H	2.32	0.48
1:C:121:GLU:O	1:C:122:LYS:C	2.53	0.47
2:B:154:ASP:OD1	2:B:157:LEU:N	2.44	0.47
1:C:116:GLU:OE1	1:C:119:ARG:NH2	2.47	0.47
2:B:131:LEU:HA	6:B:1482:HOH:O	2.14	0.47
2:D:365:HIS:O	2:D:368:GLU:HG3	2.15	0.47
2:B:131:LEU:HG	2:B:177:ILE:HG13	1.96	0.46
1:C:12:ILE:O	1:C:15:ILE:HG22	2.15	0.46
1:C:55:ILE:HD13	1:C:91:CYS:SG	2.56	0.46
2:B:137:GLU:OE2	2:D:351:LYS:NZ	2.40	0.46
2:B:338:VAL:O	2:B:341:LYS:HG3	2.16	0.46
2:D:339:ILE:HD11	6:D:1009:HOH:O	2.14	0.46
2:B:156:LYS:HE3	2:B:156:LYS:HA	1.98	0.46
1:C:4:THR:H	1:C:7:LYS:HE2	1.77	0.46
2:B:349:ARG:HG2	2:B:349:ARG:NH1	2.27	0.45
1:A:55:ILE:HB	1:A:80:LEU:HD13	1.99	0.45
2:D:272:HIS:HB3	2:D:334:ARG:HG2	1.99	0.45
2:B:155:LEU:HD22	2:B:390:LEU:HD12	1.99	0.45
2:D:155:LEU:O	2:D:159:GLU:HB2	2.17	0.44
2:D:174:MET:HG2	6:D:1134:HOH:O	2.17	0.44
2:D:253:VAL:HG22	2:D:253:VAL:O	2.18	0.44
2:D:336:ASN:HD21	2:D:338:VAL:HB	1.83	0.44
2:B:349:ARG:NH1	6:B:1332:HOH:O	2.49	0.44
1:A:108:LYS:HG2	6:A:1367:HOH:O	2.16	0.44
1:C:58:ARG:HD2	1:C:59:PHE:CE2	2.53	0.44
2:D:268:SER:OG	5:D:528:PG4:H42	2.18	0.43
1:A:45:ASN:CG	1:A:45:ASN:O	2.57	0.43
2:B:230:LYS:HD2	2:B:309:ASN:HB3	2.00	0.43
2:B:336:ASN:HD21	2:B:339:ILE:H	1.66	0.43
2:D:167:LEU:HD11	2:D:387:ARG:CB	2.45	0.43
1:A:12:ILE:O	1:A:15:ILE:HG22	2.18	0.43
1:C:4:THR:OG1	1:C:7:LYS:HG3	2.19	0.43
2:B:263:THR:CG2	2:B:265:ARG:HG2	2.49	0.43
1:A:116:GLU:OE1	1:A:119:ARG:NH2	2.52	0.43
1:A:60:TRP:O	1:A:73:CYS:HB2	2.19	0.43
2:B:157:LEU:HA	2:B:157:LEU:HD22	1.89	0.43
2:D:187:PRO:HG2	6:D:869:HOH:O	2.19	0.43
2:D:268:SER:H	5:D:528:PG4:C3	2.29	0.42
2:D:157:LEU:HD22	2:D:157:LEU:HA	1.80	0.42
2:B:336:ASN:ND2	2:B:336:ASN:C	2.73	0.42

Continued on next page...

Continued from previous page...

Atom-1	Atom-2	Interatomic distance (Å)	Clash overlap (Å)
2:D:295:ALA:O	2:D:296:LEU:HD12	2.19	0.42
2:B:307:PHE:HB3	2:B:308:PRO:HD2	2.00	0.42
2:D:261:HIS:HE1	6:D:1008:HOH:O	2.03	0.42
2:B:346:ARG:HD3	2:B:346:ARG:HA	1.67	0.42
2:D:277:MET:HE3	2:D:344:MET:HE3	2.02	0.41
2:D:401:PRO:O	2:D:402:SER:CB	2.68	0.41
2:B:191:ARG:NH2	2:B:350:ASP:OD2	2.53	0.41
2:D:194:HIS:HD2	6:D:1200:HOH:O	2.03	0.41
2:B:305:ASN:ND2	6:B:1159:HOH:O	2.53	0.41
2:B:365:HIS:O	2:B:368:GLU:HG2	2.21	0.41
2:B:131:LEU:HD23	2:B:131:LEU:N	2.36	0.41
2:B:153:VAL:CG1	2:B:154:ASP:N	2.84	0.41
1:C:65:GLU:O	1:C:67:PRO:CD	2.63	0.41
2:B:160:GLN:HB2	2:B:160:GLN:HE21	1.73	0.41
2:B:384:GLU:OE2	2:B:386:GLN:HG2	2.20	0.41
2:D:131:LEU:CD2	2:D:175:ASP:O	2.68	0.41
2:D:394:ILE:HG22	2:D:396:VAL:HG13	2.03	0.41
2:B:336:ASN:ND2	2:B:338:VAL:N	2.66	0.40
2:B:390:LEU:O	2:B:391:TYR:HB3	2.20	0.40
2:D:247:CYS:SG	2:D:266:CYS:N	2.94	0.40
2:D:131:LEU:HD22	2:D:176:CYS:CA	2.48	0.40
1:A:24:LEU:CD2	1:A:119:ARG:HA	2.51	0.40
2:B:263:THR:HG22	2:B:265:ARG:HG2	2.03	0.40
2:D:327:PHE:CZ	2:D:367:LYS:HB2	2.56	0.40
2:D:277:MET:CE	2:D:344:MET:HE3	2.52	0.40
2:D:336:ASN:ND2	2:D:339:ILE:H	2.20	0.40
2:D:189:ARG:NH2	2:D:352:LYS:HB3	2.37	0.40

There are no symmetry-related clashes.

5.3 Torsion angles ⓘ

5.3.1 Protein backbone ⓘ

In the following table, the Percentiles column shows the percent Ramachandran outliers of the chain as a percentile score with respect to all X-ray entries followed by that with respect to entries of similar resolution.

The Analysed column shows the number of residues for which the backbone conformation was analysed, and the total number of residues.

Mol	Chain	Analysed	Favoured	Allowed	Outliers	Percentiles	
1	A	121/123 (98%)	115 (95%)	6 (5%)	0	100	100
1	C	121/123 (98%)	117 (97%)	2 (2%)	2 (2%)	11	4
2	B	270/286 (94%)	260 (96%)	10 (4%)	0	100	100
2	D	270/286 (94%)	264 (98%)	6 (2%)	0	100	100
All	All	782/818 (96%)	756 (97%)	24 (3%)	2 (0%)	44	40

All (2) Ramachandran outliers are listed below:

Mol	Chain	Res	Type
1	C	65	GLU
1	C	66	PHE

5.3.2 Protein sidechains ⓘ

In the following table, the Percentiles column shows the percent sidechain outliers of the chain as a percentile score with respect to all X-ray entries followed by that with respect to entries of similar resolution.

The Analysed column shows the number of residues for which the sidechain conformation was analysed, and the total number of residues.

Mol	Chain	Analysed	Rotameric	Outliers	Percentiles	
1	A	109/109 (100%)	105 (96%)	4 (4%)	39	36
1	C	109/109 (100%)	105 (96%)	4 (4%)	39	36
2	B	245/254 (96%)	226 (92%)	19 (8%)	15	9
2	D	245/254 (96%)	235 (96%)	10 (4%)	35	31
All	All	708/726 (98%)	671 (95%)	37 (5%)	27	22

All (37) residues with a non-rotameric sidechain are listed below:

Mol	Chain	Res	Type
1	A	7	LYS
1	A	19	GLN
1	A	70	GLU
1	A	85	LEU
2	B	131	LEU
2	B	141	LEU
2	B	154	ASP
2	B	156	LYS
2	B	157	LEU

Continued on next page...

Continued from previous page...

Mol	Chain	Res	Type
2	B	164	LYS
2	B	167	LEU
2	B	189	ARG
2	B	194	HIS
2	B	195	LEU
2	B	240	LEU
2	B	302	LEU
2	B	336	ASN
2	B	339	ILE
2	B	343	ARG
2	B	352	LYS
2	B	354	GLU
2	B	368	GLU
2	B	375	LEU
1	C	84	GLU
1	C	85	LEU
1	C	88	ASP
1	C	110	MET
2	D	131	LEU
2	D	141	LEU
2	D	157	LEU
2	D	195	LEU
2	D	240	LEU
2	D	263	THR
2	D	287	VAL
2	D	302	LEU
2	D	336	ASN
2	D	368	GLU

Some sidechains can be flipped to improve hydrogen bonding and reduce clashes. All (19) such sidechains are listed below:

Mol	Chain	Res	Type
1	A	39	GLN
1	A	71	ASN
2	B	160	GLN
2	B	207	GLN
2	B	305	ASN
2	B	310	ASN
2	B	336	ASN
1	C	32	HIS
1	C	71	ASN
2	D	160	GLN

Continued on next page...

Continued from previous page...

Mol	Chain	Res	Type
2	D	161	GLN
2	D	162	ASN
2	D	194	HIS
2	D	261	HIS
2	D	305	ASN
2	D	310	ASN
2	D	336	ASN
2	D	347	HIS
2	D	365	HIS

5.3.3 RNA [i](#)

There are no RNA molecules in this entry.

5.4 Non-standard residues in protein, DNA, RNA chains [i](#)

There are no non-standard protein/DNA/RNA residues in this entry.

5.5 Carbohydrates [i](#)

There are no carbohydrates in this entry.

5.6 Ligand geometry [i](#)

Of 6 ligands modelled in this entry, 2 are monoatomic - leaving 4 for Mogul analysis.

In the following table, the Counts columns list the number of bonds (or angles) for which Mogul statistics could be retrieved, the number of bonds (or angles) that are observed in the model and the number of bonds (or angles) that are defined in the chemical component dictionary. The Link column lists molecule types, if any, to which the group is linked. The Z score for a bond length (or angle) is the number of standard deviations the observed value is removed from the expected value. A bond length (or angle) with $|Z| > 2$ is considered an outlier worth inspection. RMSZ is the root-mean-square of all Z scores of the bond lengths (or angles).

Mol	Type	Chain	Res	Link	Bond lengths			Bond angles		
					Counts	RMSZ	$\# Z > 2$	Counts	RMSZ	$\# Z > 2$
3	NAG	B	403	-	15,15,15	0.80	0	21,21,21	0.82	0
3	NAG	D	527	-	15,15,15	1.05	2 (13%)	21,21,21	0.77	0
5	PG4	D	528	-	9,9,12	0.53	0	8,8,11	0.32	0
5	PG4	D	529	-	9,9,12	0.45	0	8,8,11	0.32	0

In the following table, the Chirals column lists the number of chiral outliers, the number of chiral centers analysed, the number of these observed in the model and the number defined in the chemical component dictionary. Similar counts are reported in the Torsion and Rings columns. '-' means no outliers of that kind were identified.

Mol	Type	Chain	Res	Link	Chirals	Torsions	Rings
3	NAG	B	403	-	-	0/6/26/26	0/1/1/1
3	NAG	D	527	-	-	0/6/26/26	0/1/1/1
5	PG4	D	528	-	-	0/7/7/10	0/0/0/0
5	PG4	D	529	-	-	0/7/7/10	0/0/0/0

All (2) bond length outliers are listed below:

Mol	Chain	Res	Type	Atoms	Z	Observed(Å)	Ideal(Å)
3	D	527	NAG	C4-C5	2.05	1.57	1.53
3	D	527	NAG	C2-N2	2.83	1.50	1.45

There are no bond angle outliers.

There are no chirality outliers.

There are no torsion outliers.

There are no ring outliers.

2 monomers are involved in 6 short contacts:

Mol	Chain	Res	Type	Clashes	Symm-Clashes
3	D	527	NAG	1	0
5	D	528	PG4	5	0

5.7 Other polymers [i](#)

There are no such residues in this entry.

5.8 Polymer linkage issues [i](#)

There are no chain breaks in this entry.

6 Fit of model and data ⓘ

6.1 Protein, DNA and RNA chains ⓘ

In the following table, the column labelled ‘#RSRZ> 2’ contains the number (and percentage) of RSRZ outliers, followed by percent RSRZ outliers for the chain as percentile scores relative to all X-ray entries and entries of similar resolution. The OWAB column contains the minimum, median, 95th percentile and maximum values of the occupancy-weighted average B-factor per residue. The column labelled ‘Q< 0.9’ lists the number of (and percentage) of residues with an average occupancy less than 0.9.

Mol	Chain	Analysed	<RSRZ>	#RSRZ>2	OWAB(Å ²)	Q<0.9
1	A	123/123 (100%)	-0.20	5 (4%) 38 38	17, 27, 50, 62	0
1	C	123/123 (100%)	-0.16	4 (3%) 47 47	15, 24, 45, 74	0
2	B	272/286 (95%)	-0.20	12 (4%) 35 35	16, 26, 50, 67	0
2	D	272/286 (95%)	-0.21	11 (4%) 39 39	18, 26, 47, 60	0
All	All	790/818 (96%)	-0.19	32 (4%) 38 38	15, 26, 50, 74	0

All (32) RSRZ outliers are listed below:

Mol	Chain	Res	Type	RSRZ
1	C	123	PRO	9.7
2	D	402	SER	6.4
1	C	122	LYS	5.8
2	B	402	SER	5.0
2	D	152	PRO	4.5
2	B	152	PRO	4.2
2	B	349	ARG	4.0
1	A	123	PRO	3.5
2	B	131	LEU	3.3
1	A	66	PHE	3.0
2	D	131	LEU	2.9
2	D	132	THR	2.9
2	B	132	THR	2.8
1	C	45	ASN	2.8
2	B	157	LEU	2.8
2	B	151	ILE	2.8
2	B	150	ASN	2.8
2	B	346	ARG	2.7
2	D	160	GLN	2.6
1	A	68	GLU	2.4
2	B	347	HIS	2.4

Continued on next page...

Continued from previous page...

Mol	Chain	Res	Type	RSRZ
1	A	67	PRO	2.4
2	B	351	LYS	2.3
2	D	349	ARG	2.3
2	D	136	GLU	2.3
2	D	157	LEU	2.3
2	D	150	ASN	2.3
2	D	151	ILE	2.3
1	A	45	ASN	2.2
2	D	156	LYS	2.1
2	B	202	LEU	2.1
1	C	14	ASP	2.1

6.2 Non-standard residues in protein, DNA, RNA chains [i](#)

There are no non-standard protein/DNA/RNA residues in this entry.

6.3 Carbohydrates [i](#)

There are no carbohydrates in this entry.

6.4 Ligands [i](#)

In the following table, the Atoms column lists the number of modelled atoms in the group and the number defined in the chemical component dictionary. LLDF column lists the quality of electron density of the group with respect to its neighbouring residues in protein, DNA or RNA chains. The B-factors column lists the minimum, median, 95th percentile and maximum values of B factors of atoms in the group. The column labelled 'Q < 0.9' lists the number of atoms with occupancy less than 0.9.

Mol	Type	Chain	Res	Atoms	RSCC	RSR	LLDF	B-factors(Å ²)	Q < 0.9
5	PG4	D	528	10/13	0.73	0.29	7.46	56,59,62,64	0
5	PG4	D	529	10/13	0.82	0.14	3.00	58,59,61,61	0
3	NAG	D	527	15/15	0.98	0.10	0.39	16,18,19,21	0
3	NAG	B	403	15/15	0.98	0.10	0.23	18,19,22,22	0
4	CA	A	124	1/1	0.98	0.06	-1.73	25,25,25,25	0
4	CA	C	526	1/1	1.00	0.06	-1.83	18,18,18,18	0

6.5 Other polymers [i](#)

There are no such residues in this entry.