



Full wwPDB X-ray Structure Validation Report ⓘ

Feb 12, 2017 – 10:39 pm GMT

PDB ID : 2NP8
Title : Structural Basis for the Inhibition of Aurora A Kinase by a Novel Class of High Affinity Disubstituted Pyrimidine Inhibitors
Authors : Tari, L.W.; Hoffman, I.D.; Bensen, D.C.; Hunter, M.J.; Nix, J.; Nelson, K.J.; McRee, D.E.; Swanson, R.V.
Deposited on : 2006-10-26
Resolution : 2.25 Å(reported)

This is a Full wwPDB X-ray Structure Validation Report for a publicly released PDB entry.

We welcome your comments at validation@mail.wwpdb.org

A user guide is available at

<http://wwpdb.org/validation/2016/XrayValidationReportHelp>

with specific help available everywhere you see the ⓘ symbol.

The following versions of software and data (see [references ⓘ](#)) were used in the production of this report:

MolProbity	:	4.02b-467
Mogul	:	1.7.2 (RC1), CSD as538be (2017)
Xtriage (Phenix)	:	NOT EXECUTED
EDS	:	NOT EXECUTED
Percentile statistics	:	20161228.v01 (using entries in the PDB archive December 28th 2016)
Ideal geometry (proteins)	:	Engh & Huber (2001)
Ideal geometry (DNA, RNA)	:	Parkinson et al. (1996)
Validation Pipeline (wwPDB-VP)	:	recalc28949

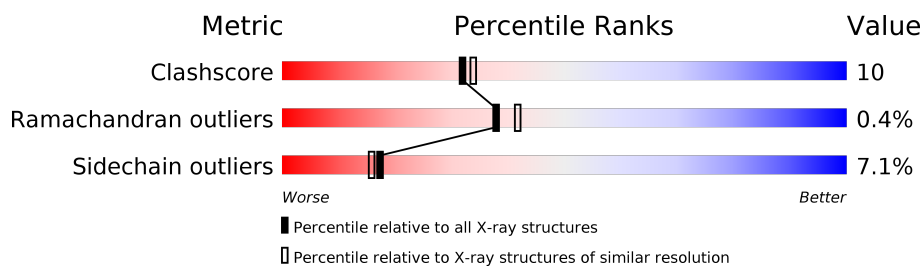
1 Overall quality at a glance

The following experimental techniques were used to determine the structure:

X-RAY DIFFRACTION

The reported resolution of this entry is 2.25 Å.

Percentile scores (ranging between 0-100) for global validation metrics of the entry are shown in the following graphic. The table shows the number of entries on which the scores are based.



Metric	Whole archive (#Entries)	Similar resolution (#Entries, resolution range(Å))
Clashscore	112137	1178 (2.26-2.26)
Ramachandran outliers	110173	1145 (2.26-2.26)
Sidechain outliers	110143	1146 (2.26-2.26)

The table below summarises the geometric issues observed across the polymeric chains and their fit to the electron density. The red, orange, yellow and green segments on the lower bar indicate the fraction of residues that contain outliers for ≥ 3 , 2, 1 and 0 types of geometric quality criteria. A grey segment represents the fraction of residues that are not modelled. The numeric value for each fraction is indicated below the corresponding segment, with a dot representing fractions $\leq 5\%$. The upper red bar (where present) indicates the fraction of residues that have poor fit to the electron density. The numeric value is given above the bar.

Note EDS was not executed.

Mol	Chain	Length	Quality of chain
1	A	272	

The following table lists non-polymeric compounds, carbohydrate monomers and non-standard residues in protein, DNA, RNA chains that are outliers for geometric or electron-density-fit criteria:

Mol	Type	Chain	Res	Chirality	Geometry	Clashes	Electron density
2	SO4	A	393	-	-	X	-

2 Entry composition [i](#)

There are 4 unique types of molecules in this entry. The entry contains 2347 atoms, of which 0 are hydrogens and 0 are deuteriums.

In the tables below, the ZeroOcc column contains the number of atoms modelled with zero occupancy, the AltConf column contains the number of residues with at least one atom in alternate conformation and the Trace column contains the number of residues modelled with at most 2 atoms.

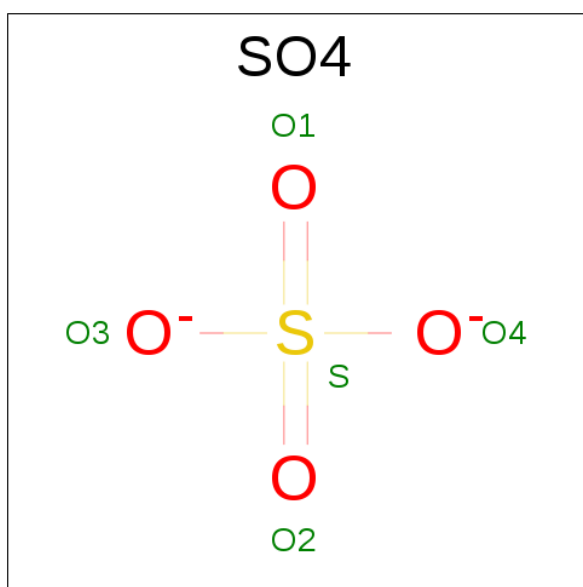
- Molecule 1 is a protein called Serine/threonine-protein kinase 6.

Mol	Chain	Residues	Atoms					ZeroOcc	AltConf	Trace
1	A	256	Total	C	N	O	S	0	0	0
			2105	1355	369	376	5			

There are 5 discrepancies between the modelled and reference sequences:

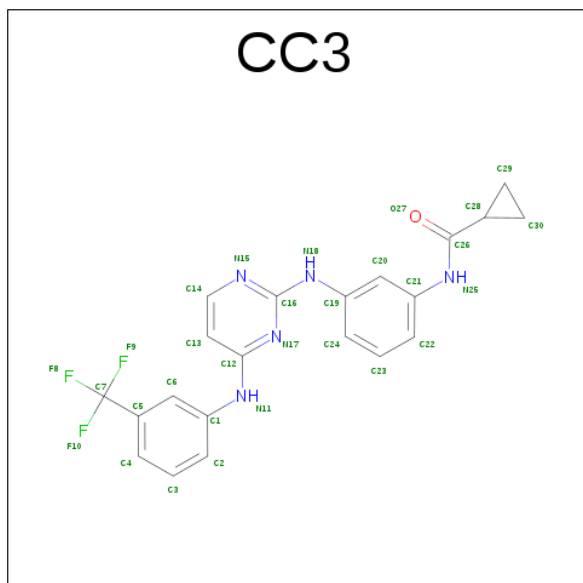
Chain	Residue	Modelled	Actual	Comment	Reference
A	120	GLY	-	CLONING ARTIFACT	UNP O14965
A	121	ALA	-	CLONING ARTIFACT	UNP O14965
A	122	MET	-	CLONING ARTIFACT	UNP O14965
A	123	GLY	-	CLONING ARTIFACT	UNP O14965
A	124	SER	-	CLONING ARTIFACT	UNP O14965

- Molecule 2 is SULFATE ION (three-letter code: SO4) (formula: O₄S).



Mol	Chain	Residues	Atoms			ZeroOcc	AltConf
2	A	1	Total	O	S	0	0
			5	4	1		
2	A	1	Total	O	S	0	0
			5	4	1		

- Molecule 3 is N-{3-[(4-{[3-(TRIFLUOROMETHYL)PHENYL]AMINO}PYRIMIDIN-2-YL)AMINO]PHENYL}CYCLOPROPANECARBOXAMIDE (three-letter code: CC3) (formula: C₂₁H₁₈F₃N₅O).



Mol	Chain	Residues	Atoms					ZeroOcc	AltConf
3	A	1	Total	C	F	N	O	0	0
			30	21	3	5	1		

- Molecule 4 is water.

Mol	Chain	Residues	Atoms		ZeroOcc	AltConf
4	A	202	Total	O	0	0
			202	202		

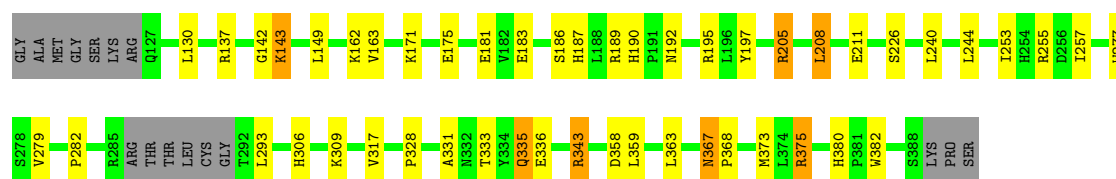
3 Residue-property plots [i](#)

These plots are drawn for all protein, RNA and DNA chains in the entry. The first graphic for a chain summarises the proportions of the various outlier classes displayed in the second graphic. The second graphic shows the sequence view annotated by issues in geometry and electron density. Residues are color-coded according to the number of geometric quality criteria for which they contain at least one outlier: green = 0, yellow = 1, orange = 2 and red = 3 or more. A red dot above a residue indicates a poor fit to the electron density ($RSRZ > 2$). Stretches of 2 or more consecutive residues without any outlier are shown as a green connector. Residues present in the sample, but not in the model, are shown in grey.

Note EDS was not executed.

- Molecule 1: Serine/threonine-protein kinase 6

Chain A: 



4 Data and refinement statistics

Xtriage (Phenix) and EDS were not executed - this section is therefore incomplete.

Property	Value	Source
Space group	P 61 2 2	Depositor
Cell constants a, b, c, α , β , γ	81.54Å 81.54Å 172.04Å 90.00° 90.00° 120.00°	Depositor
Resolution (Å)	70.53 – 2.25	Depositor
% Data completeness (in resolution range)	99.2 (70.53-2.25)	Depositor
R_{merge}	0.08	Depositor
R_{sym}	0.08	Depositor
Refinement program	REFMAC 5.2.0019	Depositor
R, R_{free}	0.244 , 0.283	Depositor
Estimated twinning fraction	No twinning to report.	Xtriage
Total number of atoms	2347	wwPDB-VP
Average B, all atoms (Å ²)	54.0	wwPDB-VP

5 Model quality

5.1 Standard geometry

Bond lengths and bond angles in the following residue types are not validated in this section: SO4, CC3

The Z score for a bond length (or angle) is the number of standard deviations the observed value is removed from the expected value. A bond length (or angle) with $|Z| > 5$ is considered an outlier worth inspection. RMSZ is the root-mean-square of all Z scores of the bond lengths (or angles).

Mol	Chain	Bond lengths		Bond angles	
		RMSZ	$\# Z > 5$	RMSZ	$\# Z > 5$
1	A	0.41	0/2158	0.58	0/2917

There are no bond length outliers.

There are no bond angle outliers.

There are no chirality outliers.

There are no planarity outliers.

5.2 Too-close contacts

In the following table, the Non-H and H(model) columns list the number of non-hydrogen atoms and hydrogen atoms in the chain respectively. The H(added) column lists the number of hydrogen atoms added and optimized by MolProbity. The Clashes column lists the number of clashes within the asymmetric unit, whereas Symm-Clashes lists symmetry related clashes.

Mol	Chain	Non-H	H(model)	H(added)	Clashes	Symm-Clashes
1	A	2105	0	2105	39	0
2	A	10	0	0	0	5
3	A	30	0	18	5	0
4	A	202	0	0	2	1
All	All	2347	0	2123	43	6

The all-atom clashscore is defined as the number of clashes found per 1000 atoms (including hydrogen atoms). The all-atom clashscore for this structure is 10.

All (43) close contacts within the same asymmetric unit are listed below, sorted by their clash magnitude.

Atom-1	Atom-2	Interatomic distance (Å)	Clash overlap (Å)
3:A:394:CC3:H2	3:A:394:CC3:H24	1.46	0.98
1:A:143:LYS:HD3	1:A:277:TRP:HE1	1.42	0.84
1:A:255:ARG:HE	1:A:306:HIS:HD2	1.23	0.84
1:A:190:HIS:HD2	1:A:192:ASN:H	1.38	0.71
1:A:255:ARG:HE	1:A:306:HIS:CD2	2.10	0.69
1:A:244:LEU:HD21	1:A:257:ILE:HD11	1.74	0.68
3:A:394:CC3:H2	3:A:394:CC3:N17	2.10	0.67
1:A:317:VAL:HG13	1:A:328:PRO:HD2	1.75	0.67
1:A:331:ALA:HB1	1:A:336:GLU:OE1	1.95	0.67
1:A:343:ARG:HG3	1:A:343:ARG:HH11	1.60	0.65
1:A:343:ARG:CG	1:A:343:ARG:HH11	2.10	0.65
1:A:255:ARG:NE	1:A:306:HIS:HD2	1.94	0.65
3:A:394:CC3:N17	3:A:394:CC3:H24	2.17	0.60
1:A:333:THR:HG23	1:A:335:GLN:HE21	1.67	0.59
1:A:186:SER:O	1:A:189:ARG:NH2	2.35	0.58
1:A:190:HIS:CD2	1:A:192:ASN:H	2.18	0.56
1:A:255:ARG:NE	1:A:306:HIS:CD2	2.70	0.56
1:A:137:ARG:NH2	4:A:514:HOH:O	2.37	0.56
1:A:253:ILE:CD1	1:A:282:PRO:HA	2.36	0.55
1:A:183:GLU:O	1:A:187:HIS:CD2	2.62	0.53
1:A:211:GLU:O	3:A:394:CC3:H14	2.08	0.53
1:A:333:THR:HG22	1:A:336:GLU:H	1.73	0.52
1:A:373:MET:HB3	1:A:375:ARG:HE	1.74	0.52
1:A:333:THR:CG2	1:A:335:GLN:HE21	2.23	0.52
1:A:333:THR:HG23	1:A:335:GLN:NE2	2.24	0.52
1:A:380:HIS:CD2	1:A:382:TRP:H	2.32	0.48
1:A:253:ILE:HD11	1:A:282:PRO:HA	1.97	0.46
1:A:358:ASP:OD2	1:A:380:HIS:HE1	1.98	0.45
1:A:331:ALA:HB1	1:A:336:GLU:CD	2.36	0.45
1:A:253:ILE:HD12	1:A:282:PRO:HA	1.99	0.45
3:A:394:CC3:N17	3:A:394:CC3:C2	2.78	0.45
1:A:255:ARG:HD2	1:A:279:VAL:O	2.18	0.44
1:A:309:LYS:HA	1:A:309:LYS:HD3	1.75	0.43
1:A:335:GLN:H	1:A:335:GLN:NE2	2.17	0.43
1:A:375:ARG:H	1:A:375:ARG:NE	2.16	0.43
1:A:162:LYS:HB3	1:A:208:LEU:HB2	2.00	0.43
1:A:195:ARG:HG2	1:A:197:TYR:CE2	2.54	0.43
1:A:367:ASN:HA	1:A:368:PRO:HD2	1.90	0.43
1:A:181:GLU:HG3	4:A:458:HOH:O	2.18	0.42
1:A:183:GLU:O	1:A:187:HIS:HD2	2.03	0.42
1:A:163:VAL:CG1	1:A:205:ARG:HG2	2.50	0.41
1:A:335:GLN:H	1:A:335:GLN:HE21	1.67	0.41

Continued on next page...

Continued from previous page...

Atom-1	Atom-2	Interatomic distance (Å)	Clash overlap (Å)
1:A:343:ARG:CG	1:A:343:ARG:NH1	2.78	0.41

All (6) symmetry-related close contacts are listed below. The label for Atom-2 includes the symmetry operator and encoded unit-cell translations to be applied.

Atom-1	Atom-2	Interatomic distance (Å)	Clash overlap (Å)
2:A:393:SO4:O3	2:A:393:SO4:O3[10_554]	1.61	0.59
2:A:393:SO4:O1	2:A:393:SO4:O3[10_554]	1.65	0.55
2:A:393:SO4:S	2:A:393:SO4:O3[10_554]	1.83	0.37
2:A:393:SO4:O1	2:A:393:SO4:O4[10_554]	2.02	0.18
2:A:393:SO4:S	2:A:393:SO4:O1[10_554]	2.10	0.10
4:A:422:HOH:O	4:A:518:HOH:O[8_665]	2.19	0.01

5.3 Torsion angles ⓘ

5.3.1 Protein backbone ⓘ

In the following table, the Percentiles column shows the percent Ramachandran outliers of the chain as a percentile score with respect to all X-ray entries followed by that with respect to entries of similar resolution.

The Analysed column shows the number of residues for which the backbone conformation was analysed, and the total number of residues.

Mol	Chain	Analysed	Favoured	Allowed	Outliers	Percentiles
1	A	252/272 (93%)	244 (97%)	7 (3%)	1 (0%)	38 42

All (1) Ramachandran outliers are listed below:

Mol	Chain	Res	Type
1	A	142	GLY

5.3.2 Protein sidechains ⓘ

In the following table, the Percentiles column shows the percent sidechain outliers of the chain as a percentile score with respect to all X-ray entries followed by that with respect to entries of similar resolution.

The Analysed column shows the number of residues for which the sidechain conformation was analysed, and the total number of residues.

Mol	Chain	Analysed	Rotameric	Outliers	Percentiles	
1	A	226/238 (95%)	210 (93%)	16 (7%)	17	16

All (16) residues with a non-rotameric sidechain are listed below:

Mol	Chain	Res	Type
1	A	130	LEU
1	A	143	LYS
1	A	149	LEU
1	A	171	LYS
1	A	175	GLU
1	A	205	ARG
1	A	208	LEU
1	A	226	SER
1	A	240	LEU
1	A	293	LEU
1	A	335	GLN
1	A	343	ARG
1	A	359	LEU
1	A	363	LEU
1	A	367	ASN
1	A	375	ARG

Some sidechains can be flipped to improve hydrogen bonding and reduce clashes. All (9) such sidechains are listed below:

Mol	Chain	Res	Type
1	A	127	GLN
1	A	187	HIS
1	A	190	HIS
1	A	192	ASN
1	A	223	GLN
1	A	306	HIS
1	A	335	GLN
1	A	367	ASN
1	A	380	HIS

5.3.3 RNA ⓘ

There are no RNA molecules in this entry.

5.4 Non-standard residues in protein, DNA, RNA chains ⓘ

There are no non-standard protein/DNA/RNA residues in this entry.

5.5 Carbohydrates ⓘ

There are no carbohydrates in this entry.

5.6 Ligand geometry ⓘ

3 ligands are modelled in this entry.

In the following table, the Counts columns list the number of bonds (or angles) for which Mogul statistics could be retrieved, the number of bonds (or angles) that are observed in the model and the number of bonds (or angles) that are defined in the chemical component dictionary. The Link column lists molecule types, if any, to which the group is linked. The Z score for a bond length (or angle) is the number of standard deviations the observed value is removed from the expected value. A bond length (or angle) with $|Z| > 2$ is considered an outlier worth inspection. RMSZ is the root-mean-square of all Z scores of the bond lengths (or angles).

Mol	Type	Chain	Res	Link	Bond lengths			Bond angles		
					Counts	RMSZ	$\# Z > 2$	Counts	RMSZ	$\# Z > 2$
2	SO4	A	392	-	4,4,4	0.16	0	6,6,6	0.10	0
2	SO4	A	393	-	4,4,4	0.16	0	6,6,6	0.55	0
3	CC3	A	394	-	33,33,33	0.88	2 (6%)	46,47,47	2.39	10 (21%)

In the following table, the Chirals column lists the number of chiral outliers, the number of chiral centers analysed, the number of these observed in the model and the number defined in the chemical component dictionary. Similar counts are reported in the Torsion and Rings columns. '-' means no outliers of that kind were identified.

Mol	Type	Chain	Res	Link	Chirals	Torsions	Rings
2	SO4	A	392	-	-	0/0/0/0	0/0/0/0
2	SO4	A	393	-	-	0/0/0/0	0/0/0/0
3	CC3	A	394	-	-	2/22/24/24	0/3/4/4

All (2) bond length outliers are listed below:

Mol	Chain	Res	Type	Atoms	Z	Observed(Å)	Ideal(Å)
3	A	394	CC3	C21-N25	-2.39	1.37	1.41
3	A	394	CC3	C19-N18	-2.13	1.36	1.40

All (10) bond angle outliers are listed below:

Mol	Chain	Res	Type	Atoms	Z	Observed(°)	Ideal(°)
3	A	394	CC3	C29-C28-C26	-7.46	110.49	117.31
3	A	394	CC3	N15-C16-N17	-7.17	119.78	126.68
3	A	394	CC3	C30-C28-C26	-6.58	111.30	117.31
3	A	394	CC3	C13-C14-N15	-3.44	119.95	123.92
3	A	394	CC3	C13-C12-N17	-2.52	119.01	123.21
3	A	394	CC3	F9-C7-C5	-2.30	107.54	112.95
3	A	394	CC3	O27-C26-C28	-2.07	119.45	122.11
3	A	394	CC3	N11-C12-N17	2.10	122.87	117.00
3	A	394	CC3	C16-N17-C12	2.58	121.12	116.72
3	A	394	CC3	C14-N15-C16	7.07	121.33	115.43

There are no chirality outliers.

All (2) torsion outliers are listed below:

Mol	Chain	Res	Type	Atoms
3	A	394	CC3	C30-C28-C26-N25
3	A	394	CC3	O27-C26-C28-C30

There are no ring outliers.

2 monomers are involved in 10 short contacts:

Mol	Chain	Res	Type	Clashes	Symm-Clashes
2	A	393	SO4	0	5
3	A	394	CC3	5	0

5.7 Other polymers [i](#)

There are no such residues in this entry.

5.8 Polymer linkage issues [i](#)

There are no chain breaks in this entry.

6 Fit of model and data

6.1 Protein, DNA and RNA chains

EDS was not executed - this section is therefore empty.

6.2 Non-standard residues in protein, DNA, RNA chains

EDS was not executed - this section is therefore empty.

6.3 Carbohydrates

EDS was not executed - this section is therefore empty.

6.4 Ligands

EDS was not executed - this section is therefore empty.

6.5 Other polymers

EDS was not executed - this section is therefore empty.