



wwPDB X-ray Structure Validation Summary Report ⓘ

Feb 13, 2017 – 09:19 pm GMT

PDB ID : 1NRL
Title : Crystal Structure of the human PXR-LBD in complex with an SRC-1 coactivator peptide and SR12813
Authors : Watkins, R.E.; Davis-Searles, P.R.; Lambert, M.H.; Redinbo, M.R.
Deposited on : 2003-01-25
Resolution : 2.00 Å(reported)

This is a wwPDB X-ray Structure Validation Summary Report for a publicly released PDB entry.

We welcome your comments at validation@mail.wwpdb.org

A user guide is available at

<http://wwpdb.org/validation/2016/XrayValidationReportHelp>

with specific help available everywhere you see the ⓘ symbol.

The following versions of software and data (see [references ⓘ](#)) were used in the production of this report:

MolProbity : 4.02b-467
Mogul : 1.7.2 (RC1), CSD as538be (2017)
Xtriage (Phenix) : 1.9-1692
EDS : trunk28620
Percentile statistics : 20161228.v01 (using entries in the PDB archive December 28th 2016)
Refmac : 5.8.0135
CCP4 : 6.5.0
Ideal geometry (proteins) : Engh & Huber (2001)
Ideal geometry (DNA, RNA) : Parkinson et al. (1996)
Validation Pipeline (wwPDB-VP) : recalc28949

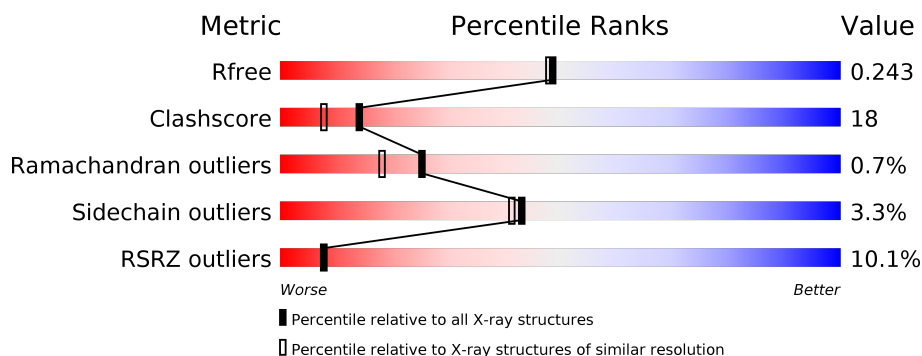
1 Overall quality at a glance

The following experimental techniques were used to determine the structure:

X-RAY DIFFRACTION

The reported resolution of this entry is 2.00 Å.

Percentile scores (ranging between 0-100) for global validation metrics of the entry are shown in the following graphic. The table shows the number of entries on which the scores are based.



Metric	Whole archive (#Entries)	Similar resolution (#Entries, resolution range(Å))
R_{free}	100719	6609 (2.00-2.00)
Clashscore	112137	7775 (2.00-2.00)
Ramachandran outliers	110173	7679 (2.00-2.00)
Sidechain outliers	110143	7678 (2.00-2.00)
RSRZ outliers	101464	6696 (2.00-2.00)

The table below summarises the geometric issues observed across the polymeric chains and their fit to the electron density. The red, orange, yellow and green segments on the lower bar indicate the fraction of residues that contain outliers for ≥ 3 , 2, 1 and 0 types of geometric quality criteria. A grey segment represents the fraction of residues that are not modelled. The numeric value for each fraction is indicated below the corresponding segment, with a dot representing fractions $\leq 5\%$. The upper red bar (where present) indicates the fraction of residues that have poor fit to the electron density. The numeric value is given above the bar.

Mol	Chain	Length	Quality of chain
1	A	316	<div> <div>7%</div> <div>65%</div> <div>20%</div> <div>•</div> <div>12%</div> </div>
1	B	316	<div> <div>10%</div> <div>58%</div> <div>26%</div> <div>•</div> <div>13%</div> </div>
2	C	25	<div> <div>16%</div> <div>52%</div> <div>8%</div> <div>40%</div> </div>
2	D	25	<div> <div>8%</div> <div>40%</div> <div>20%</div> <div>40%</div> </div>

The following table lists non-polymeric compounds, carbohydrate monomers and non-standard residues in protein, DNA, RNA chains that are outliers for geometric or electron-density-fit crite-

ria:

Mol	Type	Chain	Res	Chirality	Geometry	Clashes	Electron density
3	SRL	A	1	-	-	-	X
3	SRL	B	2	-	-	-	X

2 Entry composition

There are 4 unique types of molecules in this entry. The entry contains 5346 atoms, of which 0 are hydrogens and 0 are deuteriums.

In the tables below, the ZeroOcc column contains the number of atoms modelled with zero occupancy, the AltConf column contains the number of residues with at least one atom in alternate conformation and the Trace column contains the number of residues modelled with at most 2 atoms.

- Molecule 1 is a protein called Orphan nuclear receptor PXR.

Mol	Chain	Residues	Atoms					ZeroOcc	AltConf	Trace
1	A	278	Total	C	N	O	S	0	3	0
			2274	1460	388	408	18			
1	B	275	Total	C	N	O	S	0	3	0
			2248	1445	387	398	18			

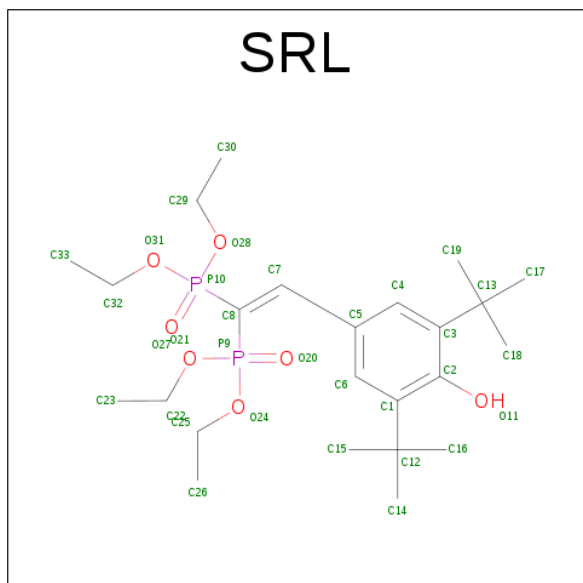
There are 22 discrepancies between the modelled and reference sequences:

Chain	Residue	Modelled	Actual	Comment	Reference
A	119	MET	-	EXPRESSION TAG	UNP O75469
A	120	LYS	-	EXPRESSION TAG	UNP O75469
A	121	LYS	-	EXPRESSION TAG	UNP O75469
A	122	GLY	-	EXPRESSION TAG	UNP O75469
A	123	HIS	-	EXPRESSION TAG	UNP O75469
A	124	HIS	-	EXPRESSION TAG	UNP O75469
A	125	HIS	-	EXPRESSION TAG	UNP O75469
A	126	HIS	-	EXPRESSION TAG	UNP O75469
A	127	HIS	-	EXPRESSION TAG	UNP O75469
A	128	HIS	-	EXPRESSION TAG	UNP O75469
A	129	GLY	-	EXPRESSION TAG	UNP O75469
B	119	MET	-	EXPRESSION TAG	UNP O75469
B	120	LYS	-	EXPRESSION TAG	UNP O75469
B	121	LYS	-	EXPRESSION TAG	UNP O75469
B	122	GLY	-	EXPRESSION TAG	UNP O75469
B	123	HIS	-	EXPRESSION TAG	UNP O75469
B	124	HIS	-	EXPRESSION TAG	UNP O75469
B	125	HIS	-	EXPRESSION TAG	UNP O75469
B	126	HIS	-	EXPRESSION TAG	UNP O75469
B	127	HIS	-	EXPRESSION TAG	UNP O75469
B	128	HIS	-	EXPRESSION TAG	UNP O75469
B	129	GLY	-	EXPRESSION TAG	UNP O75469

- Molecule 2 is a protein called Nuclear Receptor Coactivator 1 isoform 3.

Mol	Chain	Residues	Atoms				ZeroOcc	AltConf	Trace
2	C	15	Total	C	N	O	0	0	0
			127	80	26	21			
2	D	15	Total	C	N	O	0	0	0
			131	82	27	22			

- Molecule 3 is [2-(3,5-DI-TERT-BUTYL-4-HYDROXY-PHENYL)-1-(DIETHOXY-PHOSPHORYL)-VINYL]-PHOSPHONIC ACID DIETHYL ESTER (three-letter code: SRL) (formula: $C_{24}H_{42}O_7P_2$).



Mol	Chain	Residues	Atoms				ZeroOcc	AltConf
3	A	1	Total	C	O	P	0	0
			33	24	7	2		
3	B	1	Total	C	O	P	0	0
			33	24	7	2		

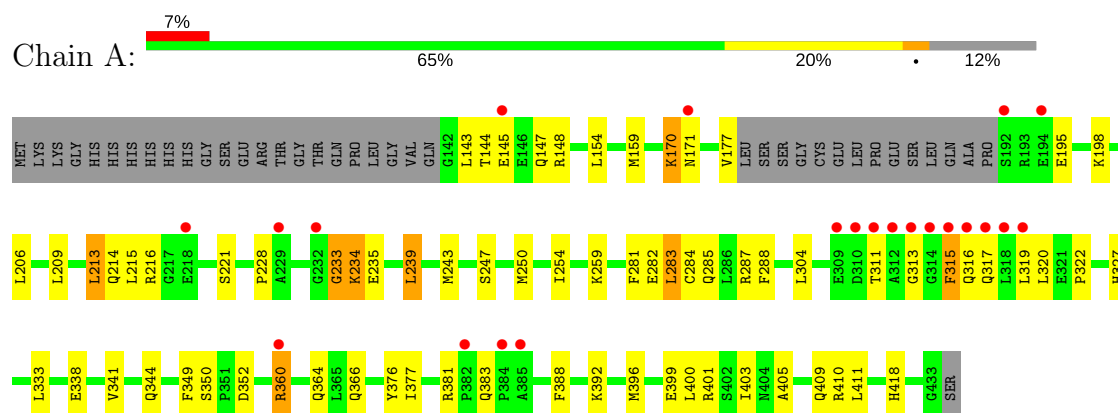
- Molecule 4 is water.

Mol	Chain	Residues	Atoms		ZeroOcc	AltConf
4	A	263	Total	O	0	0
			263	263		
4	B	211	Total	O	0	0
			211	211		
4	C	7	Total	O	0	0
			7	7		
4	D	19	Total	O	0	0
			19	19		

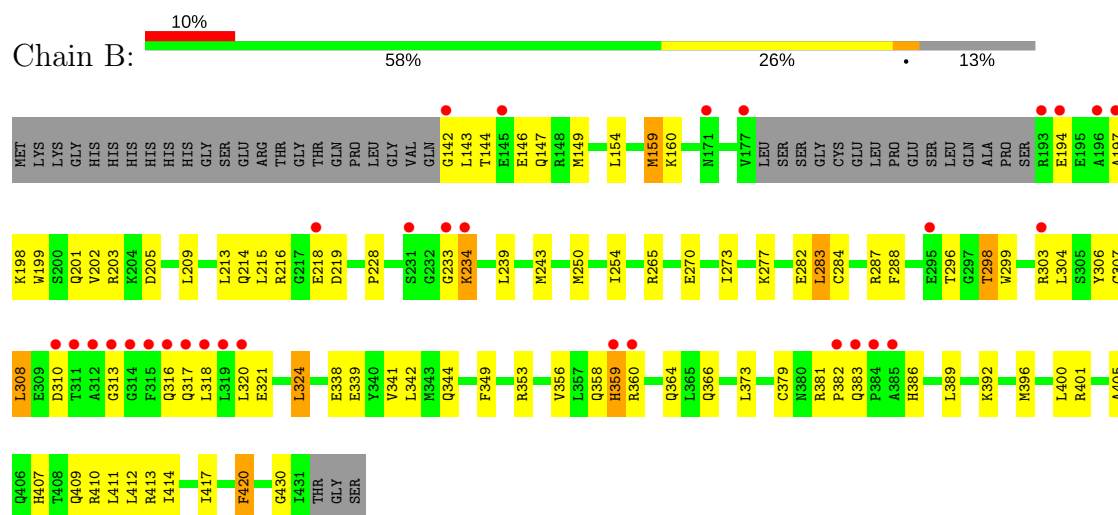
3 Residue-property plots [i](#)

These plots are drawn for all protein, RNA and DNA chains in the entry. The first graphic for a chain summarises the proportions of the various outlier classes displayed in the second graphic. The second graphic shows the sequence view annotated by issues in geometry and electron density. Residues are color-coded according to the number of geometric quality criteria for which they contain at least one outlier: green = 0, yellow = 1, orange = 2 and red = 3 or more. A red dot above a residue indicates a poor fit to the electron density ($RSRZ > 2$). Stretches of 2 or more consecutive residues without any outlier are shown as a green connector. Residues present in the sample, but not in the model, are shown in grey.

• Molecule 1: Orphan nuclear receptor PXR



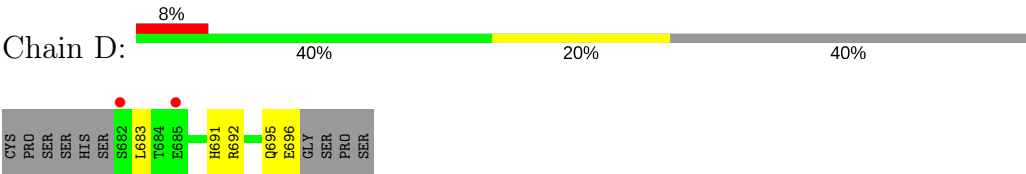
• Molecule 1: Orphan nuclear receptor PXR



• Molecule 2: Nuclear Receptor Coactivator 1 isoform 3



• Molecule 2: Nuclear Receptor Coactivator 1 isoform 3



4 Data and refinement statistics

Property	Value	Source
Space group	P 21 21 21	Depositor
Cell constants a, b, c, α , β , γ	85.10Å 89.48Å 106.67Å 90.00° 90.00° 90.00°	Depositor
Resolution (Å)	19.88 – 2.00 19.88 – 2.00	Depositor EDS
% Data completeness (in resolution range)	94.6 (19.88-2.00) 94.7 (19.88-2.00)	Depositor EDS
R_{merge}	(Not available)	Depositor
R_{sym}	(Not available)	Depositor
$\langle I/\sigma(I) \rangle$ ¹	1.99 (at 2.01Å)	Xtriage
Refinement program	CNS 1.0	Depositor
R, R_{free}	0.216 , 0.240 0.219 , 0.243	Depositor DCC
R_{free} test set	2661 reflections (5.05%)	DCC
Wilson B-factor (Å ²)	29.1	Xtriage
Anisotropy	0.057	Xtriage
Bulk solvent k_{sol} (e/Å ³), B_{sol} (Å ²)	0.35 , 58.0	EDS
L-test for twinning ²	$\langle L \rangle = 0.49$, $\langle L^2 \rangle = 0.33$	Xtriage
Estimated twinning fraction	0.017 for k,h,-l	Xtriage
F_o, F_c correlation	0.94	EDS
Total number of atoms	5346	wwPDB-VP
Average B, all atoms (Å ²)	36.0	wwPDB-VP

Xtriage's analysis on translational NCS is as follows: *The largest off-origin peak in the Patterson function is 4.75% of the height of the origin peak. No significant pseudotranslation is detected.*

¹Intensities estimated from amplitudes.

²Theoretical values of $\langle |L| \rangle$, $\langle L^2 \rangle$ for acentric reflections are 0.5, 0.333 respectively for untwinned datasets, and 0.375, 0.2 for perfectly twinned datasets.

5 Model quality [i](#)

5.1 Standard geometry [i](#)

Bond lengths and bond angles in the following residue types are not validated in this section: SRL

The Z score for a bond length (or angle) is the number of standard deviations the observed value is removed from the expected value. A bond length (or angle) with $|Z| > 5$ is considered an outlier worth inspection. RMSZ is the root-mean-square of all Z scores of the bond lengths (or angles).

Mol	Chain	Bond lengths		Bond angles	
		RMSZ	# Z >5	RMSZ	# Z >5
1	A	0.37	0/2325	0.53	0/3132
1	B	0.34	0/2299	0.51	0/3098
2	C	0.22	0/128	0.45	0/170
2	D	0.27	0/132	0.52	0/175
All	All	0.35	0/4884	0.52	0/6575

There are no bond length outliers.

There are no bond angle outliers.

There are no chirality outliers.

There are no planarity outliers.

5.2 Too-close contacts [i](#)

In the following table, the Non-H and H(model) columns list the number of non-hydrogen atoms and hydrogen atoms in the chain respectively. The H(added) column lists the number of hydrogen atoms added and optimized by MolProbity. The Clashes column lists the number of clashes within the asymmetric unit, whereas Symm-Clashes lists symmetry related clashes.

Mol	Chain	Non-H	H(model)	H(added)	Clashes	Symm-Clashes
1	A	2274	0	2269	73	0
1	B	2248	0	2238	88	0
2	C	127	0	133	2	0
2	D	131	0	139	3	0
3	A	33	0	41	12	0
3	B	33	0	41	11	0
4	A	263	0	0	9	0
4	B	211	0	0	12	0
4	C	7	0	0	1	0

Continued on next page...

Continued from previous page...

Mol	Chain	Non-H	H(model)	H(added)	Clashes	Symm-Clashes
4	D	19	0	0	0	0
All	All	5346	0	4861	170	0

The all-atom clashscore is defined as the number of clashes found per 1000 atoms (including hydrogen atoms). The all-atom clashscore for this structure is 18.

The worst 5 of 170 close contacts within the same asymmetric unit are listed below, sorted by their clash magnitude.

Atom-1	Atom-2	Interatomic distance (Å)	Clash overlap (Å)
1:B:356:VAL:HB	1:B:359[B]:HIS:CE1	1.79	1.17
1:B:214:GLN:HE21	1:B:216:ARG:HH11	1.16	0.93
1:B:356:VAL:HB	1:B:359[B]:HIS:HE1	1.36	0.90
1:A:213:LEU:HD21	1:A:215:LEU:HD23	1.63	0.78
1:B:407:HIS:HA	4:B:2006:HOH:O	1.83	0.76

There are no symmetry-related clashes.

5.3 Torsion angles [i](#)

5.3.1 Protein backbone [i](#)

In the following table, the Percentiles column shows the percent Ramachandran outliers of the chain as a percentile score with respect to all X-ray entries followed by that with respect to entries of similar resolution.

The Analysed column shows the number of residues for which the backbone conformation was analysed, and the total number of residues.

Mol	Chain	Analysed	Favoured	Allowed	Outliers	Percentiles	
1	A	277/316 (88%)	265 (96%)	10 (4%)	2 (1%)	25	18
1	B	274/316 (87%)	265 (97%)	7 (3%)	2 (1%)	25	18
2	C	13/25 (52%)	12 (92%)	1 (8%)	0	100	100
2	D	13/25 (52%)	12 (92%)	1 (8%)	0	100	100
All	All	577/682 (85%)	554 (96%)	19 (3%)	4 (1%)	25	18

All (4) Ramachandran outliers are listed below:

Mol	Chain	Res	Type
1	B	234	LYS

Continued on next page...

Continued from previous page...

Mol	Chain	Res	Type
1	A	234	LYS
1	B	420	PHE
1	A	233	GLY

5.3.2 Protein sidechains ⓘ

In the following table, the Percentiles column shows the percent sidechain outliers of the chain as a percentile score with respect to all X-ray entries followed by that with respect to entries of similar resolution.

The Analysed column shows the number of residues for which the sidechain conformation was analysed, and the total number of residues.

Mol	Chain	Analysed	Rotameric	Outliers	Percentiles	
1	A	248/279 (89%)	238 (96%)	10 (4%)	36	32
1	B	243/279 (87%)	235 (97%)	8 (3%)	43	41
2	C	14/24 (58%)	14 (100%)	0	100	100
2	D	15/24 (62%)	15 (100%)	0	100	100
All	All	520/606 (86%)	502 (96%)	18 (4%)	43	39

5 of 18 residues with a non-rotameric sidechain are listed below:

Mol	Chain	Res	Type
1	A	360	ARG
1	A	399	GLU
1	B	308	LEU
1	A	283	LEU
1	A	315	PHE

Some sidechains can be flipped to improve hydrogen bonding and reduce clashes. 5 of 11 such sidechains are listed below:

Mol	Chain	Res	Type
1	A	285	GLN
1	A	364	GLN
1	B	272	GLN
1	A	272	GLN
1	B	224	ASN

5.3.3 RNA ⓘ

There are no RNA molecules in this entry.

5.4 Non-standard residues in protein, DNA, RNA chains ⓘ

There are no non-standard protein/DNA/RNA residues in this entry.

5.5 Carbohydrates ⓘ

There are no carbohydrates in this entry.

5.6 Ligand geometry ⓘ

2 ligands are modelled in this entry.

In the following table, the Counts columns list the number of bonds (or angles) for which Mogul statistics could be retrieved, the number of bonds (or angles) that are observed in the model and the number of bonds (or angles) that are defined in the chemical component dictionary. The Link column lists molecule types, if any, to which the group is linked. The Z score for a bond length (or angle) is the number of standard deviations the observed value is removed from the expected value. A bond length (or angle) with $|Z| > 2$ is considered an outlier worth inspection. RMSZ is the root-mean-square of all Z scores of the bond lengths (or angles).

Mol	Type	Chain	Res	Link	Bond lengths			Bond angles		
					Counts	RMSZ	# $ Z > 2$	Counts	RMSZ	# $ Z > 2$
3	SRL	A	1	-	30,33,33	1.88	6 (20%)	40,50,50	2.65	14 (35%)
3	SRL	B	2	-	30,33,33	1.88	6 (20%)	40,50,50	2.65	14 (35%)

In the following table, the Chirals column lists the number of chiral outliers, the number of chiral centers analysed, the number of these observed in the model and the number defined in the chemical component dictionary. Similar counts are reported in the Torsion and Rings columns. '-' means no outliers of that kind were identified.

Mol	Type	Chain	Res	Link	Chirals	Torsions	Rings
3	SRL	A	1	-	-	0/34/44/44	0/1/1/1
3	SRL	B	2	-	-	0/34/44/44	0/1/1/1

The worst 5 of 12 bond length outliers are listed below:

Mol	Chain	Res	Type	Atoms	Z	Observed(Å)	Ideal(Å)
3	B	2	SRL	O11-C2	-2.15	1.32	1.37

Continued on next page...

Continued from previous page...

Mol	Chain	Res	Type	Atoms	Z	Observed(Å)	Ideal(Å)
3	A	1	SRL	O11-C2	-2.14	1.32	1.37
3	A	1	SRL	C6-C1	2.04	1.42	1.39
3	B	2	SRL	C6-C1	2.22	1.42	1.39
3	A	1	SRL	C2-C1	3.53	1.45	1.41

The worst 5 of 28 bond angle outliers are listed below:

Mol	Chain	Res	Type	Atoms	Z	Observed(°)	Ideal(°)
3	B	2	SRL	O24-P9-O20	-5.33	103.59	115.14
3	A	1	SRL	O24-P9-O20	-5.30	103.66	115.14
3	A	1	SRL	O21-P9-O20	-5.08	104.12	115.14
3	B	2	SRL	O21-P9-O20	-5.04	104.20	115.14
3	A	1	SRL	C4-C3-C2	-4.57	112.59	116.82

There are no chirality outliers.

There are no torsion outliers.

There are no ring outliers.

2 monomers are involved in 23 short contacts:

Mol	Chain	Res	Type	Clashes	Symm-Clashes
3	A	1	SRL	12	0
3	B	2	SRL	11	0

5.7 Other polymers [i](#)

There are no such residues in this entry.

5.8 Polymer linkage issues [i](#)

There are no chain breaks in this entry.

6 Fit of model and data [i](#)

6.1 Protein, DNA and RNA chains [i](#)

In the following table, the column labelled ‘#RSRZ> 2’ contains the number (and percentage) of RSRZ outliers, followed by percent RSRZ outliers for the chain as percentile scores relative to all X-ray entries and entries of similar resolution. The OWAB column contains the minimum, median, 95th percentile and maximum values of the occupancy-weighted average B-factor per residue. The column labelled ‘Q< 0.9’ lists the number of (and percentage) of residues with an average occupancy less than 0.9.

Mol	Chain	Analysed	<RSRZ>	#RSRZ>2	OWAB(Å ²)	Q<0.9
1	A	278/316 (87%)	0.35	22 (7%) 13 13	16, 29, 61, 90	0
1	B	275/316 (87%)	0.49	31 (11%) 6 6	16, 32, 68, 86	0
2	C	15/25 (60%)	1.36	4 (26%) 1 1	27, 41, 62, 63	0
2	D	15/25 (60%)	0.39	2 (13%) 4 4	25, 34, 61, 63	0
All	All	583/682 (85%)	0.44	59 (10%) 8 8	16, 31, 63, 90	0

The worst 5 of 59 RSRZ outliers are listed below:

Mol	Chain	Res	Type	RSRZ
1	B	312	ALA	9.6
1	B	311	THR	9.2
1	A	311	THR	7.6
1	B	194	GLU	6.9
1	B	310	ASP	6.5

6.2 Non-standard residues in protein, DNA, RNA chains [i](#)

There are no non-standard protein/DNA/RNA residues in this entry.

6.3 Carbohydrates [i](#)

There are no carbohydrates in this entry.

6.4 Ligands [i](#)

In the following table, the Atoms column lists the number of modelled atoms in the group and the number defined in the chemical component dictionary. LLDF column lists the quality of electron density of the group with respect to its neighbouring residues in protein, DNA or RNA chains. The B-factors column lists the minimum, median, 95th percentile and maximum values of B factors

of atoms in the group. The column labelled 'Q < 0.9' lists the number of atoms with occupancy less than 0.9.

Mol	Type	Chain	Res	Atoms	RSCC	RSR	LLDF	B-factors(\AA^2)	Q<0.9
3	SRL	A	1	33/33	0.83	0.31	9.89	58,62,68,70	0
3	SRL	B	2	33/33	0.83	0.30	4.93	53,60,69,71	0

6.5 Other polymers [i](#)

There are no such residues in this entry.